

Effect of smoking cessation on CT imaging in patients with Chronic Obstructive Pulmonary Disease: A systematic review

Daryl Cheng^{1†}

Siddharth Agarwal²

Joseph Jacob³

John R Hurst¹

¹UCL Respiratory, University College London, London, UK

²Department of Radiology, University of Nottingham, Nottingham, UK

³Centre for Medical Image Computing, University College London, London, UK

†Corresponding author

Abstract

Background: Smoking cessation is the only intervention known to affect disease progression in patients with COPD as measured by the rate of change in forced expiratory volume/1s (FEV₁) over time. The need for new drugs to modify the progression of COPD is well recognised. We hypothesised that changes on CT in relation to smoking cessation may relate to changes in response to disease-modifying drugs, and therefore as a novel quantitative biomarker of drug efficacy. CT biomarkers of emphysema and airway wall thickness are increasingly used in research, but there has not been a systematic appraisal of the evidence to assess how these biomarkers evolve with a change in smoking exposure in COPD patients.

Methods: We searched MEDLINE, Embase, the Cochrane Library (Cochrane Database of Systematic Reviews, Cochrane Central Register of Controlled Trials (CENTRAL)), and Web of Science to 10th September 2019. We included longitudinal studies of smoking COPD patients who had CT scans before and after smoking cessation. Two review authors (DC, SA) independently screened studies, extracted outcome data and assessed the risk of bias, with a third reviewer (JRH) arbitrating conflicts.

Results: Four studies were included in the final analysis. Three studies measured CT markers of lung density, which all, perhaps counter-intuitively, showed a significant decrease with smoking cessation. One study measured CT markers of airway wall thickness, which also significantly decreased with smoking cessation.

Authors' conclusions: Smoking cessation in COPD patients causes a fall in lung density, but the magnitude of the effect has not been rigorously assessed. One study has reported a decrease in airway wall thickness with smoking cessation. The number of studies is small, with some risk of bias. This question remains important for COPD researchers and requires further studies, in particular to assess whether changes with smoking cessation may model changes in response to novel pharmaceutical agents, and how to handle change in smoking status in relation to longitudinal observational imaging studies in COPD.

1 Introduction

Chronic obstructive pulmonary disease (COPD) is a condition characterised by airflow limitation and persistent respiratory symptoms. It is the fourth leading cause of death worldwide¹ and its prevalence is increasing². Disease progression has classically been assessed by measures such as the rate of change in forced expiratory volume over 1 second (FEV₁). Despite the development of drugs to reduce symptoms and prevent exacerbations in COPD, smoking cessation is the only proven way to slow the progression of disease³, as measured by rate of decline in FEV₁, and remains the only disease-modifying intervention we can offer patients. In part, this likely reflects the heterogeneity in rate of FEV₁ decline between patients with COPD. There is currently much interest in developing disease-modifying interventions in early COPD and one limitation is a current lack of quantitative biomarkers of disease progression.

Since its introduction more than four decades ago, computed tomography (CT) is now widespread in clinical practice and research. It has unique strengths in terms of image resolution and speed of acquisition which mean that it has utility in a variety of pulmonary conditions. In COPD, quantitative regional assessment of emphysema is already used to guide use of endobronchial valves, and has been used as a biomarker of response to alpha-1 antitrypsin augmentation, whilst quantitative assessments of airway wall geometry and functional small airway dysfunction have proved useful phenotyping tools in COPD research.

These CT biomarkers hold further promise as biomarkers of treatment response in COPD. We hypothesised that quantitative imaging biomarkers that change in relation to smoking cessation – the archetypal disease modifying intervention in COPD – may also be useful as markers to treatment response in relation to novel drugs.

We have therefore conducted a systematic review of studies examining the CT changes which occur as a result of smoking cessation in COPD patients. We aimed to synthesise the range of quantitative biomarkers measured, and the direction and size of effect with intervention. We provide a robust quality assessment of our included studies. Our results will be of interest to those developing imaging biomarkers of treatment response in COPD.

Our review question was: how does CT imaging in patients with COPD change when they stop smoking compared to if they continue smoking? Our outcome measures are quantitative changes in CT scan appearances.

2 Methods

2.1 Protocol and registration

A review protocol was published on the 4th September 2019 on PROSPERO [ref]. The protocol was structured according to the Preferred reporting items for systematic review and meta-analysis protocols (PRISMA-P) 2015 statement ⁸. The protocol registration number is CRD42019144555.

2.2 Criteria for review

2.2.1 *Types of study*

We included original research studies which report the outcome (quantitative CT scan appearances) in our population (COPD patients) and which meet our definition of change in exposure (successful smoking cessation).

We included longitudinal studies, with no other restrictions on study design. Studies could be case controlled, cohort, or observational, prospective or retrospective. Since randomisation to continued smoking would be unethical, randomisation was not an inclusion criterion. Studies in any language were included.

We excluded studies which recorded outcome measures during acute hospitalization or during COPD exacerbations. We excluded review articles. We excluded longitudinal studies which reported outcome measures only before or only after intervention.

2.2.2 *Types of patient*

Our target patients were adults with a diagnosis of COPD with a significant smoking history. We did not make restrictions as to the diagnostic criteria the study authors chose for COPD diagnosis. We did not make restrictions as to the definition of 'significant smoking'.

2.2.3 *Types of intervention*

Intervention was successful smoking cessation between two outcome time-points (CT scan). We did not place any restriction on the duration of smoking cessation. If a control group was used in a study, this would be taken as patients who continued to smoke until the second time point. A lack of a control group was not an exclusion criterion since some studies may elect to use extrapolation from longitudinal data as a comparison.

2.2.4 *Types of outcome and prioritisation*

The main outcomes were: (1) change in quantitative CT biomarkers of emphysema; and (2) change in quantitative CT biomarkers of airway wall thickness.

We also report qualitative change in CT appearances.

2.3 Search methods for identification of studies

2.3.1 *Information sources*

The bibliographic databases we searched included: OVID MEDLINE, EMBASE, The Cochrane Library (Cochrane Database of Systematic Reviews, Cochrane Central Register of Controlled Trials (CENTRAL)), and Web of Science. Other sources included articles identified through discussion with experts, including experts on the review team.

2.3.2 *Search strategy*

The search strategy was formulated to include all articles which included the topics of chronic obstructive pulmonary disease, smoking cessation, and computed tomography. The technical differences in compiling this search were translated across the different bibliographic database. The Evidence Services Librarian at University College London was consulted to help build a robust search strategy during the protocol stage of the review. The search strategy was also appraised using the Peer Review of Electronic Search Strategies (PRESS) guideline⁹. The full search strategy for each of the databases is included as appendix A. The search was carried out on 10th September 2019 for all three databases.

2.4 Data collection and analysis

2.4.1 *Study selection*

Titles of studies were retrieved using the search strategy from our information sources. These studies were combined with others found from other sources. Duplicates were removed. Two reviewers (DC and SA) independently screened the study titles for potential eligibility to meet the inclusion criteria. The abstracts for these studies were retrieved for a further round of screening. All studies which met inclusion screening by abstract had full text retrieved. The full texts of these articles were screened by two review members independently, and any discordance about eligibility were resolved by a third member of the review team (JRH).

2.4.2 Data extraction and management

Data was extracted using a standardised form (6Appendix B). Data was extracted independently by two study authors and any discrepancies resolved through discussion.

2.4.3 Assessment for risk of bias in individual studies

To assess for the risk of bias in individual studies, the formal risk of bias for internal validity tool 'Risk Of Bias In Non-randomised Studies - of Interventions' (ROBINS-I) was used¹⁰. We first attempted to resolve disagreement between two reviewer judgements by consensus discussion; then by majority opinion with the third reviewer.

2.4.4 Data synthesis

A data extraction table was produced using the data items outlined above. We have provided a narrative synthesis of the findings of the included studies and reported the direction and magnitude of the effect size of summary statistics. We have also summarised the homogeneity and perceived efficacy of the smoking cessation intervention performed, and the different CT metrics reported by each study.

We have not proceeded to any formal meta-analysis. This is because of the small number of included studies, the heterogenous CT metrics used, the difference in time between stopping smoking, and the heterogenous clinical characteristics of the patient populations.

3 Results

3.1 Results of search

A total of 1467 studies were retrieved from the search for screening and combined with one study collected from discussion with experts. 194 duplicates were removed to give a total of 1273 studies to screen by title and abstract. At title and abstract screening, reviewer DC included 12 studies, whereas SA included 14. 6 of these were in conflict, with a total of 16 studies included by a minimum of 1 reviewer. These studies had full text retrieved for screening, of which 5 were included in the final analysis. Study selection is summarised in the PRISMA flowchart (Figure 1).

3.2 Excluded studies

1257 studies were excluded by screening by title and abstract. 11 studies were excluded by full text, and the reasons for this are detailed in table 5.4 'Characteristics of excluded studies'. The most common reason was that there was no evidence of smoking cessation between the two time points, and studies examined CT differences between former smokers and current smokers (n=5). The next most common reason was that the population investigated were not COPD patients (n=4).

3.3 Included studies

The five remaining studies were published between 2011 and 2019. Details of the included studies are included in the table 5.3 'Characteristics of included studies'. Four studies were published in English. One study was published in Chinese and was translated by reviewer DC for the review team.

3.4 Risk of bias

3.4.1 Risk of bias across studies

The formal risk of bias for internal validity tool 'Risk Of Bias In Non-randomised Studies - of Interventions' (ROBINS-I) was used to assess biases across all included studies. The confounders selected for consideration included: socioeconomic differences between intervention groups; and severity of disease and differences in previous history of smoking between intervention groups. Socioeconomic factors may influence co-variables such as environmental exposures which could influence the outcome. Patients with severe disease or a stronger smoking history may be less likely to successfully quit smoking and thus baseline lung pathology could influence the outcome.

Co-interventions such as nicotine replacement therapy or exercise were possibly different between intervention groups, but this was not thought likely to impact outcomes.

The 'ideal' randomised trial design was an individually randomised trial of COPD patients to either continue smoking or stop smoking immediately after the first outcome measure and remain abstinent until a repeat outcome measure at 1 year.

3.4.2 Risk of bias within included studies

The ROBINS-I tool was used to evaluate individual studies for potential bias due to confounding, participant selection, intervention classification, deviation from intervention, missing data, outcome measurement, and selective reporting. The authors' risk of bias judgements for the individual studies are included in the supplementary table 5.3 'Characteristics of included studies'.

Due to a critical risk of bias in the selective reporting, of the 5 included studies, one¹¹ has not been included in the narrative synthesis, and the results presented hereafter are from the remaining four studies. The excluded study compared the change in %LAA-950 between the 5 lobes of the lung between two time points without evidence of multi-comparison correction for statistical significance.

The included studies detailed numbers of patients in each cohort who successfully stopped smoking according to their definition of smoking cessation. These definitions differed however, making direct comparison difficult. For example, the monitoring differed, with some authors replying on smoking diaries, and some on self-reported questionnaires. One study used carbon monoxide monitoring. None of the studies reported the time duration from smoking cessation to the outcome measures (CT scan).

3.5 Main outcomes

3.5.1 Quantitative change in CT markers of emphysema

Two of the included studies involving 81 patients who stopped smoking, reported changes in quantitative CT markers of lung density using the percentage or relative area of lung below an attenuation threshold^{12,13}. Both studies reported a significant increase in the %LAA/RA-950 or -910 HU, representing a fall in lung density. Both also reported a significant decrease in the 15th percentile of lung density (PD15), again representing a fall in lung density with smoking cessation.

Shaker and Hlaing demonstrated that up to a year after smoking cessation, there is a significant decrease in lung density (n=36, n=45 respectively), a difference that was demonstrated to be greater than a continued smoking control group from Shaker's original study (Table 5.2).

Hlaing *et al* (2015) also demonstrated a significant reduction in the mean lung density (MLD, -7.7HU, SD=2.3, p<0.001).

3.5.2 Quantitative change in CT markers of airway wall thickness

Only one study involving 203 patients who stopped smoking reported changes in airway wall metrics on CT with smoking cessation¹⁴. The authors reported a significant decrease in wall thickness of -0.18mm (95% CI -0.23 to -0.13, p<0.001) on smoking cessation between two scans five years apart. The authors did not comment on duration of smoking cessation or time from smoking cessation to second scan but defined smoking cessation as self-reported abstinence from smoking after the first scan.

3.6 Other outcomes

3.6.1 Qualitative change in CT appearances

One study reported qualitative changes in appearances of emphysema on smoking cessation. This was performed blinded, with the radiologist comparing scans for emphysema, ground glass opacification or micronodules, documenting whether these features were more, less, or the same quantity as the baseline scan. The study reported no significant difference in the presence of emphysema visually with smoking cessation but did report a decrease in the presence of micronodules.

3.6.2 Change in FEV₁ with smoking cessation

Three of the five studies reported a change in FEV₁ with smoking cessation. Two papers reported no significant difference in this measure at one year, whilst Hlaing *et al* (2015) reported a significant decline in FEV₁ after 1 year sustained smoking abstinence (-33ml, p<0.001). The authors noted that this change was less than patients who continued to smoke.

Dhariwal *et al* (2014) reported a transient improvement in FEV₁ of mean 184ml at 6 weeks, but this decreased to 81ml at 12 weeks and not fully maintained at 1 year. Shaker *et al* (2011) reported no significant change in FEV₁ within one year of smoking cessation (72ml, SD=47ml, p=0.14).

4 Discussion

4.1 Summary of main results

4.1.1 *Measures of Lung Density*

In summary, quantitative CT metrics of lung density fall with smoking cessation. The direction of effect of three markers across the four studies included was consistent. Relative area of low attenuation (RAA) - RAA-910 and RAA-950 are defined as the percentage of lung pixels, or the relative area, with lower than 910 and 950 Hounsfield units respectively (approximately the density of air). The advantage of these measures and the mean lung density is that they are objective, replicable and are quick to assess using automated software, however may be underestimated in the presence of transient consolidation. MLD suffers from the additional disadvantage in that it includes non-airspace densities even when the lungs are segmented meticulously. Density of the 15th percentile (PD15) is similarly an automated density measure, but one that is not affected by 'outliers' e.g. consolidation.

4.1.2 *Measures of Airway Thickness*

Only one study reported the change in airway wall thickness, suggesting that this decreases with smoking cessation, but because this result has not been replicated, and difficult to interpret with confidence. The Pi10 measure, the square root wall thickness for all airways with an internal diameter of 10mm, is a global measure of wall thickness using automated software. This measure is objective and replicable, but importantly is different to measures of lung density and therefore is theoretically prone to a different set of confounders. Charbonnier [**] demonstrated that the same cohort of quitters had both a decrease in Pi10 and RAA-910, suggesting that this effect is not due to a different patient cohort.

4.2 Limitations

Overall, a small number of studies were available for evidence synthesis, and they varied in quality and risk of bias. Of the five studies included after the final search, one had a critical risk of bias. The studies addressed prior smoking history and severity of COPD, with varying degrees of rigour.

At the outcome level, most of the studies used differing outcome measures which made direct comparison difficult and meta-analysis impossible. The outcomes chosen were also limited by the scans performed, with newer biomarkers such as parametric response mapping (PRM) not yet evaluated. The studies also varied in terms of length of follow up.

At the review level, limitations were the small number of studies which met our final inclusion criteria. Large longitudinal cohorts such as ECLIPSE likely contain the data required for this analysis, but researchers have not analysed the effect of smoking cessation¹⁶ There likely exists a sizable dataset of imaging data for in lung cancer screening populations, and we were careful not to exclude these from our search, but we did not identify any which examined the subset of COPD patients. Even within the broader question of the longitudinal anatomical evolution of COPD is not well studied. As noted by Coxson et al, cohorts were limited by their lack of specific focus on COPD patients.

4.3 Conclusions

CT measures of COPD equate to lower lung density and thickened airways, although these studies demonstrate this more in the smoking cessation groups.

Pathologies that affect airway wall thickness and lung density can confound these CT biomarkers. Smoking may promote an inflammatory state which increases the density of lung parenchyma and thickens the airway walls¹⁵. The implication is that these biomarkers may be largely measuring transient inflammation, and that the hypothesised mechanism of lower lung density and thickened airways – which could be interpreted as COPD progression – requires further study. It is worth noting that no study scanned beyond 5 years.

The pulmonary CT imaging changes that occur with smoking cessation in patients with COPD needs further study, and it is not at present possible to test the hypothesis that smoking-cessation changes on CT in COPD may be useful as biomarkers of drug intervention.

5 Figures and tables

5.1 Figure 1: PRISMA diagram

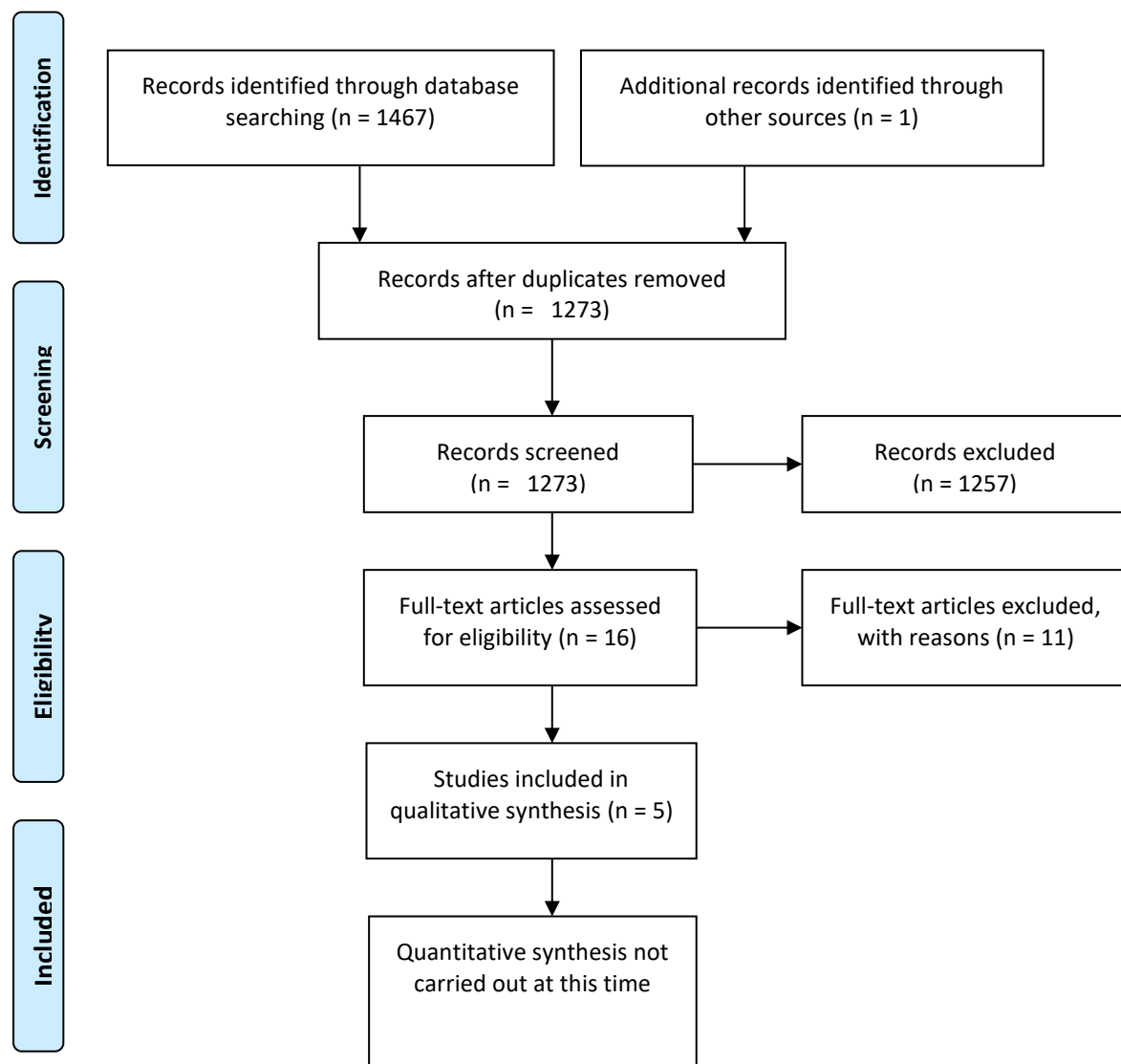


Figure 1. PRISMA diagram illustrating numbers of studies included ⁸.

5.2 Table 1

Study	Number of COPD quitters	Number of continued smokers	Interval between scans	Study design	Effect of Quitting			Effect of continued smoking			Overall risk of bias
					Density	Airway wall thickness	Other	Density	Airway wall thickness	Other	
Charbonnier 2019	203	631	< 5 years	Cohort	%LAA RA-910: +8.98	Pi10: -0.18 mm		%LAA RA-910: +3.86	Pi10: +0.14 mm		Moderate
Li 2018	40	54	2 years	Cohort	%LAA RA-950: No significant change 15.44+/-13.18 to 16.42+/-13.23 p = 0.68			%LAA RA-950: increase 11.3+/-10.84 to 11.94+/-11.36 p = 0.02			Critical
Hlaing 2015	45	0	1 year	Cohort	%LAA RA-950: +1.9						Moderate
					PD15: -7.7						
					MLD: -7.7						
Dhariwal 2014	10	8	1 year	Cohort				Fewer micronodules if present at baseline*			Moderate
Shaker 2011	36	65 placebo 72 budesonide	< 1 year	Cohort	%LAA RA-910: +2.6			%LAA RA-910: +1.1 placebo, -0.74 budesonide			Moderate
					PD15: -4.9			PD15: -1.81 placebo, -1.12 budesonide			

LAA RA: Relative area of low attenuation wither lower than the specified number Hounsfield Units (higher is less dense). PD15: Density of the 15th percentile (lower is less dense). MLD: Mean lung density (lower is less dense). Pi10: Square root wall thickness for all airways with an internal diameter of 10mm (higher is thicker).

*6 out of 10 COPD quitters had nodules at baseline, out of which 5 had qualitatively fewer micronodules at 1 year.

5.3 Characteristics of included studies

5.3.1 Charbonnier et al 2019

Methods	Secondary analysis on a cohort recruited to study longitudinal history of COPD in the United States. Study data spanned 5 years. Analysis performed on inspiration only CT using automated tools. Unclear if smoking cessation interventions were administered.	
Participants	Patients with COPD and matched smoking controls. In this analysis, Case N = 203, Control N = 631. Female = 47.6%. Mean age = 55.8 (7.4). Mean Pack year history = 42 (22.3)	
Interventions	The intervention group were defined as patients who stopped smoking after visit 1. The control group were defined as patients who continued to smoke.	
Outcomes	Change in Pi10	
Notes		
Risk of bias		
Bias	Authors' judgement	Support for judgement
Confounding	Low	Multivariate models adjusted for gender, age, BMI, pack years, TLC, BDR, smoking status, and LAA%-950. Analysis repeated per GOLD stage
Selection	Moderate	Unknown if start of follow-up and start of intervention coincide for most participants
Classification	Moderate	Unclear if all patients in smoking cessation analysis were in COPD cohort or if included smoking controls
Deviation	Moderate	Relied on self-reported smoking cessation
Missing data	Low	No participants excluded on basis of missing data

CT Biomarkers of Smoking Cessation in COPD

Measurement	Low	Use of automated tools only
Reporting	Low	Subgroup and multiple comparisons avoided

5.3.2 Li et al 2018

This study was not included in the narrative synthesis due to critical risk of bias.

Methods	Retrospective cohort analysis chest CT images of patients with COPD at two time points, with a two-year interval. Subgroup analyses of differences in automated CT metrics of lung density by smoking cessation	
Participants	130 patients identified meeting inclusion criteria of COPD patients with appropriate CT imaging between 40-80 years old and without concomitant lung disease.	
Interventions	Retrospectively reported smoking cessation on hospital database records, unknown method of reporting, unknown measurement of deviation from intervention	
Outcomes	%LAA-950, PD15	
Notes		
<u>Risk of bias</u>	Overall risk of bias - Critical	
Bias	Authors' judgement	Support for judgement

CT Biomarkers of Smoking Cessation in COPD

Confounding	Moderate	Start of follow-up and start of intervention does not coincide for most participants
Selection	Serious	Selection of participants into the analysis based on participant characteristics observed after the start of intervention
Classification	Moderate	Information used to define intervention groups not recorded at start of intervention
Deviation	Moderate	No evidence of monitoring of adherence to intervention
Missing data	Moderate	Participants were excluded due to missing data on other variables needed for the analysis
Measurement	Moderate	Unclear if measurement was blinded
Reporting	Critical	The reported effect estimate was likely to be selected, based on the results, from multiple outcome <i>measurements</i> within the outcome domain, as well as different <i>subgroups</i>

5.3.3 Hlaing et al 2015

Methods	Primary analysis on cohort of patients from outpatient clinic. Unblinded, cohort study without control arm with analysis of HRCT data using automated computer software to detect outcome measures
----------------	--

CT Biomarkers of Smoking Cessation in COPD

Participants	Patients with a history of COPD only without concomitant respiratory disease were recruited from outpatient clinic. Only patients which successfully quit included in analysis	
Interventions	Well defined 3-month group based smoking cessation program with nicotine replacement therapy. Successful quitting defined as self-reported smoking abstinence for 1 year.	
Outcomes	PD15, %LAA/RA-950, Mean lung density	
Notes		
<u>Risk of bias</u>	Overall risk of bias - Low	
Bias	Authors' judgement	Support for judgement
Confounding	Low	All patients in an outpatient clinic were given smoking cessation advice. Those that adhered were selected for the cohort.
Selection	Moderate	45 subjects included, who have successfully self-reported adherence to smoking cessation. No information about those who failed smoking cessation, no control
Classification	Low	Intervention groups were clearly defined, and the information used to define intervention groups recorded at the start of the intervention

CT Biomarkers of Smoking Cessation in COPD

Deviation	Low	Important co-interventions were balanced across intervention groups
Missing data	Low	Outcome data available for all participants
Measurement	Low	Authors were aware of intervention received, but automated measurement tools unbiased
Reporting	Low	Appropriate reporting without multiple outcome measurement, analysis or subgroup analysis without correction

5.3.4 Dhariwal et al 2014

Methods	Primary analysis of cohort of patients recruited for HRCT data. Subjects meeting inclusion criteria were screened for spirometric confirmation of COPD. HRCTs performed prior to smoking cessation, at week 12 and at week 52 of continued smoking abstinence.
Participants	Subjects recruited through smoking cessation clinics, newspaper advertising, local GPs and telephone helplines.
Interventions	All subjects offered either 6-week smoking cessation course of one-to-one counselling, with the option of nicotine replacement therapy
Outcomes	Qualitative reporting of emphysema and micronodules on CT data
Notes	
<u>Risk of bias</u>	

CT Biomarkers of Smoking Cessation in COPD

Bias	Authors' judgement	Support for judgement
Confounding	Moderate	Prior smoking history not controlled for but otherwise subjects matched for
Selection	Low	
Classification	Low	
Deviation	Low	CO monitoring used to assess ongoing cessation
Missing data	Low	Outcome data available for all participants
Measurement	Low	Qualitative assessment by radiologists that were blinded to the intervention groups
Reporting	Moderate	Multiple subgroup analyses conducted although reported result is not selected from this

5.3.5 Shaker et al 2011

Methods	Cohort analysis of a subset of quitters from a larger RCT measuring CT metrics and lung function tests in COPD smokers between budesonide intervention and control groups.
Participants	36 who quit smoking from 254 COPD smokers. Female = 33.3%. Mean age = 64.8 (6.8). Mean Pack year history = 59 (25)
Interventions	Defined as patients who stopped smoking after visit 1

CT Biomarkers of Smoking Cessation in COPD

Outcomes	Change in PD15 and RA-910	
Notes		
<u>Risk of bias</u>		
Bias	Authors' judgement	Support for judgement
Confounding	Low	Multivariate model adjusted for treatment, type of scanner and patient factors.
Selection	Low	Quitting unlikely associated with use of budesonide compared to placebo
Classification	Low	
Deviation	Moderate	No information about adherence to smoking cessation; presumed self reported and no monitoring (e.g. CO)
Missing data	Low	No participants excluded on basis of missing data
Measurement	Low	Automated tools only
Reporting	Low	Subgroup and multiple comparisons avoided

5.4 Characteristics of excluded studies

Study	Reason for exclusion
Jobst 2019 ¹⁷	Not performed in target population (COPD patients)
Li 2018 ¹⁸	Did not investigate intervention (smoking cessation)
Jobst 2018 ¹⁹	Not performed in target population (COPD patients)
Takayanagi 2017 ²⁰	Did not investigate intervention (smoking cessation)
Kawata 2017 ²¹	Duplicate paper, did not investigate intervention (smoking cessation)
Chun 2015 ²²	Not performed in target population (COPD patients)
Shimizu 2014 ²³	Conference abstract
Kauczor 2013 ²⁴	Comment piece
Coxson 2013 ²⁵	Did not investigate intervention (smoking cessation)
Ashraf 2011 ¹⁵	Not performed in target population (COPD patients)
Ohara 2008 ²⁶	Did not investigate intervention (smoking cessation)
Dirksen 2005 ²⁷	Conference poster

6 References

1. Lozano, R. *et al.* Global and regional mortality from 235 causes of death for 20 age groups in 1990 and 2010: A systematic analysis for the Global Burden of Disease Study 2010. *Lancet* (2012). doi:10.1016/S0140-6736(12)61728-0
2. Adeloye, D. *et al.* Global and regional estimates of COPD prevalence: Systematic review and meta-analysis. *J. Glob. Health* **5**, 020415 (2015).
3. Anthonisen, N. R. *et al.* Effects of Smoking Intervention and the Use of an Inhaled Anticholinergic Bronchodilator on the Rate of Decline of FEV1: The Lung Health Study. *JAMA J. Am. Med. Assoc.* (1994). doi:10.1001/jama.1994.03520190043033
4. W.J., K. *et al.* CT metrics of airway disease and emphysema in severe COPD. *Chest* **136**, 396–404 (2009).
5. Oudkerk, M. *et al.* European position statement on lung cancer screening. *The Lancet Oncology* (2017). doi:10.1016/S1470-2045(17)30861-6
6. J.C., R. *et al.* A Bayesian Nonparametric Model for Disease Subtyping: Application to Emphysema Phenotypes. *IEEE Trans. Med. Imaging* **36**, 343–354 (2017).
7. Castaldi, P. J. *et al.* Cluster analysis in the COPDGene study identifies subtypes of smokers with distinct patterns of airway disease and emphysema. *Thorax* **69**, 415–422 (2014).
8. Moher, D. *et al.* Preferred reporting items for systematic review and meta-analysis protocols (PRISMA-P) 2015 statement. *Syst. Rev.* (2016). doi:10.1186/2046-4053-4-1
9. McGowan, J. *et al.* PRESS Peer Review of Electronic Search Strategies: 2015 Guideline Statement. *J. Clin. Epidemiol.* **75**, 40–46 (2016).

10. Sterne, J. A. *et al.* ROBINS-I: A tool for assessing risk of bias in non-randomised studies of interventions. *BMJ* (2016). doi:10.1136/bmj.i4919
11. Y., L. *et al.* Longitudinal study of CT quantitative indicators of emphysema in COPD patients after smoking cessation. *J. Xi'an Jiaotong Univ. (Medical Sci.* **39**, (2018).
12. T.M., H., Y.S., W. & S.-M., C. The high resolution computed tomography in assessment of patients with emphysema following smoking cessation. *J. Intern. Med. Taiwan* **26**, 107–114 (2015).
13. S.B., S., T., S., L.C., L. & B.C., S. Rapid fall in lung density following smoking cessation in COPD. *COPD J. Chronic Obstr. Pulm. Dis.* **8**, 2–7 (2011).
14. Charbonnier, J.-P. *et al.* Airway wall thickening on CT: Relation to smoking status and severity of COPD. *Respir. Med.* **146**, 36–41 (2019).
15. Ashraf, H. *et al.* Short-term effect of changes in smoking behaviour on emphysema quantification by CT. *Thorax* **66**, 55–60 (2011).
16. Coxson, H. O. *et al.* The presence and progression of emphysema in COPD as determined by CT scanning and biomarker expression: a prospective analysis from the ECLIPSE study. *Lancet. Respir. Med.* **1**, 129–136 (2013).
17. Jobst, B. J. *et al.* Longitudinal airway remodeling in active and past smokers in a lung cancer screening population. *Eur. Radiol.* **29**, 2968–2980 (2019).
18. Li, Y., Dai, Y. & Guo, Y. The pulmonary damage caused by smoking: A longitudinal study. *Technol. Health Care* **26**, 501–507 (2018).
19. B.J., J. *et al.* Effect of smoking cessation on quantitative computed tomography in smokers at risk in a lung cancer screening population. *Eur. Radiol.* **28**, 807–815 (2018).

20. T., S. *et al.* Longitudinal changes in structural abnormalities using MDCT in COPD: Do the CT measurements of airway wall thickness and small pulmonary vessels change in parallel with emphysematous progression? *Int. J. COPD* **12**, 551–560 (2017).
21. N., K. *et al.* Longitudinal changes in structural abnormalities using MDCT in chronic obstructive pulmonary disease. *Eur. Respir. J.* **50**, (2017).
22. Chun, G. *et al.* Quantitative analytics for emphysema in lung cancer screening CT scans. *Am. J. Respir. Crit. Care Med.* (2015).
23. K., S. *et al.* Emphysema and airways assessed by computed tomography in COPD patients who displayed variable annual changes in fev1 over 5 years. *Am. J. Respir. Crit. Care Med.* **189**, (2014).
24. H.-U., K. & C.P., H. Longitudinal quantitative low-dose CT in COPD: Ready for use? *Lancet Respir. Med.* **1**, 95–96 (2013).
25. Coxson, H. O. *et al.* The presence and progression of emphysema in COPD as determined by CT scanning and biomarker expression: A prospective analysis from the ECLIPSE study. *Lancet Respir. Med.* **1**, 129–136 (2013).
26. Ohara, T. *et al.* Longitudinal study of airway dimensions in chronic obstructive pulmonary disease using computed tomography. *RESPIROLOGY* **13**, 372–378 (2008).
27. Dirksen, A. S. S. B., Stavngaard, T. & Hoffmen, E. How smoking cessation and inhaled corticosteroids affect lung density by computed tomography in COPD. *Am. Thorac. Soc. 2005 Int. Conf. may 20-25; san diego, Calif.* [A92] [Poster: 821] (2005).

Appendix A Search Strategies

A.1 Ovid MEDLINE® (1946 to August Week 5 2019)

- 1 exp Pulmonary Disease, Chronic Obstructive/ (52490)
- 2 Lung Diseases, Obstructive/ (18135)
- 3 (obstruct\$ adj3 (pulmonary or lung\$ or airway\$ or airflow\$ or bronch\$ or respirat\$)).mp.
[mp=title, abstract, original title, name of substance word, subject heading word, floating
sub-heading word, keyword heading word, organism supplementary concept word, protocol
supplementary concept word, rare disease supplementary concept word, unique identifier,
synonyms] (102899)
- 4 COPD.mp. [mp=title, abstract, original title, name of substance word, subject heading word,
floating sub-heading word, keyword heading word, organism supplementary concept word,
protocol supplementary concept word, rare disease supplementary concept word, unique
identifier, synonyms] (36917)
- 5 COAD.mp. [mp=title, abstract, original title, name of substance word, subject heading word,
floating sub-heading word, keyword heading word, organism supplementary concept word,
protocol supplementary concept word, rare disease supplementary concept word, unique
identifier, synonyms] (244)
- 6 emphysema*.mp. [mp=title, abstract, original title, name of substance word, subject
heading word, floating sub-heading word, keyword heading word, organism supplementary
concept word, protocol supplementary concept word, rare disease supplementary concept
word, unique identifier, synonyms] (32495)
- 7 (chronic* adj3 bronchiti*).mp. [mp=title, abstract, original title, name of substance word,
subject heading word, floating sub-heading word, keyword heading word, organism
supplementary concept word, protocol supplementary concept word, rare disease
supplementary concept word, unique identifier, synonyms] (10836)
- 8 1 or 2 or 3 or 4 or 5 or 6 or 7 (138142)
- 9 smoking cessation/ or smoking reduction/ or smoking/ or exp pipe smoking/ or exp tobacco
smoking/ (150642)
- 10 ((quit* or stop* or ceas* or cessation or abstain* or abstinen*) adj3 (smok* or tobacco or
cigar*)).mp. [mp=title, abstract, original title, name of substance word, subject heading
word, floating sub-heading word, keyword heading word, organism supplementary concept
word, protocol supplementary concept word, rare disease supplementary concept word,
unique identifier, synonyms] (41160)
- 11 9 or 10 (157596)
- 12 exp Tomography, X-Ray Computed/ (410855)

CT Biomarkers of Smoking Cessation in COPD

- 13 CT scan.mp. [mp=title, abstract, original title, name of substance word, subject heading word, floating sub-heading word, keyword heading word, organism supplementary concept word, protocol supplementary concept word, rare disease supplementary concept word, unique identifier, synonyms] (44507)
- 14 CAT scan.mp. [mp=title, abstract, original title, name of substance word, subject heading word, floating sub-heading word, keyword heading word, organism supplementary concept word, protocol supplementary concept word, rare disease supplementary concept word, unique identifier, synonyms] (820)
- 15 CATSCAN.mp. [mp=title, abstract, original title, name of substance word, subject heading word, floating sub-heading word, keyword heading word, organism supplementary concept word, protocol supplementary concept word, rare disease supplementary concept word, unique identifier, synonyms] (3)
- 16 (comput* adj2 tomograph*).mp. [mp=title, abstract, original title, name of substance word, subject heading word, floating sub-heading word, keyword heading word, organism supplementary concept word, protocol supplementary concept word, rare disease supplementary concept word, unique identifier, synonyms] (300434)
- 17 12 or 13 or 14 or 15 or 16 (546904)
- 18 8 and 11 and 17 (769)

A.2 EMBASE (Embase Classic & Embase 1947 to 2019 September 09)

- 1 exp chronic obstructive lung disease/ (125489)
- 2 COPD.mp. [mp=title, abstract, heading word, drug trade name, original title, device manufacturer, drug manufacturer, device trade name, keyword, floating subheading word, candidate term word] (82778)
- 3 (obstruct\$ adj3 (pulmonary or lung\$ or airway\$ or airflow\$ or bronch\$ or respirat\$)).mp. [mp=title, abstract, heading word, drug trade name, original title, device manufacturer, drug manufacturer, device trade name, keyword, floating subheading word, candidate term word] (201771)
- 4 COAD.mp. [mp=title, abstract, heading word, drug trade name, original title, device manufacturer, drug manufacturer, device trade name, keyword, floating subheading word, candidate term word] (455)
- 5 (chronic\$ adj3 bronchiti\$).mp. [mp=title, abstract, heading word, drug trade name, original title, device manufacturer, drug manufacturer, device trade name, keyword, floating subheading word, candidate term word] (22805)
- 6 emphysema*.mp. [mp=title, abstract, heading word, drug trade name, original title, device manufacturer, drug manufacturer, device trade name, keyword, floating subheading word, candidate term word] (56796)

CT Biomarkers of Smoking Cessation in COPD

- 7 1 or 2 or 3 or 4 or 5 or 6 (271226)
- 8 exp smoking cessation/ (56555)
- 9 exp smoking reduction/ (149)
- 10 smoking cessation program/ (3217)
- 11 ((smok* or tobacco or cigar*) adj3 (quit* or stop* or ceas* or cessation or abstain* or abstin*)).mp. [mp=title, abstract, heading word, drug trade name, original title, device manufacturer, drug manufacturer, device trade name, keyword, floating subheading word, candidate term word] (71196)
- 12 8 or 9 or 10 or 11 (71244)
- 13 exp computer assisted tomography/ (1002372)
- 14 CT scan.mp. [mp=title, abstract, heading word, drug trade name, original title, device manufacturer, drug manufacturer, device trade name, keyword, floating subheading word, candidate term word] (98165)
- 15 CAT scan.mp. [mp=title, abstract, heading word, drug trade name, original title, device manufacturer, drug manufacturer, device trade name, keyword, floating subheading word, candidate term word] (1360)
- 16 CATSCAN.mp. [mp=title, abstract, heading word, drug trade name, original title, device manufacturer, drug manufacturer, device trade name, keyword, floating subheading word, candidate term word] (17)
- 17 (comput* adj2 tomograph*).mp. [mp=title, abstract, heading word, drug trade name, original title, device manufacturer, drug manufacturer, device trade name, keyword, floating subheading word, candidate term word] (992850)
- 18 13 or 14 or 15 or 16 or 17 (1100405)
- 19 7 and 12 and 18 (466)

A.3 The Cochrane Library

1. MeSH descriptor: [Pulmonary Disease, Chronic Obstructive] explode all trees-4858
2. MeSH descriptor: [Lung Diseases, Obstructive] this term only-2522
3. COPD OR (chronic obstructive pulmonary disease*)-18567
4. COAD OR (chronic obstructive airway* disease*)-8305
5. (obstruct* NEAR/2 (pulmonary OR lung* OR airway* OR airflow* OR bronch* OR respirat*)) -18034
6. chronic bronchitis-2597
7. emphysema*-1646
8. {OR #1-#7}-25813
9. MeSH descriptor: [Smoking Cessation] explode all trees-3779
10. MeSH descriptor: [Tobacco Use Cessation] explode all trees-94

CT Biomarkers of Smoking Cessation in COPD

11. MeSH descriptor: [Smoking Reduction] explode all trees-9
12. stop* smok*-2339
13. ("tobacco control intervention"):kw-0
14. ("smoking cessation treatment"):kw-108
15. smok* cessation-10210
16. (quit* OR stop* OR cessation OR ceas*) NEAR (smok* OR tobacco OR cigar*)-11130
17. {OR #9-#16}-11930
18. MeSH descriptor: [Tomography, X-Ray] explode all trees-4975
19. CT scan*-10513
20. comput* NEAR/2 tomograph*-19483
21. CAT scan*-226
22. CATSCAN*-17

A.4 Web of Science (All years 1900-2019)

1. TS=(COPD OR chronic obstructive pulmonary disease* OR COAD OR chronic obstructive airway* disease* OR chronic obstructive lung disease OR emphysema OR chronic bronchitis) [105,681]
2. TS=(CT OR comput* tomograph* OR CAT OR CATSCAN) [401,167]
3. TS=((smok* OR tobacco OR cigar*) AND (quit* OR stop* OR cessation OR ceas* OR giv* OR prevent* OR abstain* or abstinen*)) [97,885]
4. #3 AND #2 AND #1 [163]

CT Biomarkers of Smoking Cessation in COPD

Appendix B Data extraction form

Included as supplementary figure