

# Reduced ICU demand with early CPAP and proning in COVID-19 at Bradford: a single centre cohort

T Lawton\*, K Wilkinson\*, A Corp, R Javid, L MacNally, M McCooe, E Newton

\*Joint first authors

Bradford Teaching Hospitals NHS Foundation Trust  
Bradford Royal Infirmary  
Duckworth Lane  
Bradford  
BD9 6RJ

Correspondence: [tom.lawton@bthft.nhs.uk](mailto:tom.lawton@bthft.nhs.uk)

## Social media summary

The use of early CPAP and proning in COVID-19 was associated with lower ICU admissions, intubation, and mortality at Bradford compared to a large UK cohort (ISARIC WHO CCP-UK).

# Abstract

## Background

The management of hypoxic respiratory failure due to COVID-19 is not currently subject to consensus. International and national guidance has favoured early intubation, with concerns persisting over the use of CPAP. However, considering available evidence and local circumstances, early ward based CPAP and self proning was adopted in our institution. We aimed to evaluate the safety and efficacy of this approach.

## Methods

In this retrospective observational study we included all patients admitted with a positive COVID-19 PCR. Negative patients were also included where clinical suspicion remained high. A large number of simple CPAP machines were used with entrained oxygen. Ward staff were supported in their use by physiotherapists and an intensive critical care outreach program. CPAP was initiated early via protocol, with the aim of preventing rather than responding to deterioration. Data was analysed descriptively.

## Results

559 patients admitted prior to 1/May/20 were included. 29.5% received CPAP, 7.2% were admitted to ICU and 4.8% were ventilated. Hospital mortality was 33.3%, ICU mortality 54.5%. Following CPAP, 64% of patients with moderate or severe ARDS at presentation, who were candidates for escalation, avoided intubation during their stay.

## Conclusion

Figures for ICU admission, intubation and overall hospital mortality are significantly lower than those reported in a large and relevant comparator database, whilst ICU mortality is similar. This is despite our population having high levels of co-morbidity and ethnicities associated with poor outcomes. We advocate this approach as both effective and safe.

# Introduction

COVID-19 is a newly identified disease which can result in a severe acute respiratory syndrome. Originating in Wuhan, China, at the end of 2019, it has since gained pandemic status and sparked a global health crisis.

Early respiratory management guidance was drawn up and subsequently revised by both the World Health Organisation (WHO)<sup>1</sup> and NHS England (NHSE)<sup>2-6</sup>. This guidance strongly favoured early intubation, with NHSE suggesting preparation for intubation of those with a respiratory rate of  $\geq 20$  breaths per minute and oxygen saturations of  $\leq 94\%$  despite treatment. Continuous positive airway pressure (CPAP) treatment was initially deemed appropriate in only select patients and later as a ceiling of care or a bridge to intubation, rather than an ongoing management strategy.<sup>2,7</sup>

Bradford is a deprived<sup>8</sup> and ethnically diverse city in the UK, with 32.5% of the population being non-white.<sup>9</sup> It has high rates of comorbidity, particularly diabetes with the highest prevalence in the UK (10.8% vs UK 6.9%).<sup>10</sup> All these factors are associated with worse COVID-19 outcomes.<sup>11,12</sup> Bradford Royal Infirmary serves a population of approximately 500,000, with 16 intensive care unit (ICU) beds capable of supporting invasive ventilation. As the COVID-19 crisis unfolded, an additional ICU was opened, expanding this to 28 beds. However, early UK modelling suggested that 30% of hospital admissions might require invasive ventilation.<sup>13</sup> Plans were made for a third ICU, but there were concerns about staffing, swamping of hospital infrastructure, and potentially unnecessary early invasive ventilation with its attendant risks to patients and the system.

In mid-March Qin Sun et al. argued that a combination of risk stratification, early critical care admission, CPAP, and awake prone positioning, could result in a reduction in intubation rates and possibly improve mortality.<sup>14</sup> Other early publications also reported high numbers of patients managed on non invasive ventilation (NIV)<sup>15-18</sup> Experiences from Italy and China suggested that high levels of intubation rapidly saturated critical care capacity, leading to worse outcomes and highlighting the need to prevent unnecessary intubation.<sup>19,20</sup>

One of our first concerns was ICU staffing, given the complexity of managing an intubated patient in full personal protective equipment (PPE) even assuming a ventilated bed was available. Another was the potential limitation of oxygen supplies, as highlighted by NHSEI, and the high use of some equipment.<sup>21</sup> We therefore acquired a large number of air-driven CPAP machines (DeVilbiss SleepCube) into which low-flow oxygen could be entrained, and set them up as “Fixed CPAP” devices for use in the early treatment of more severe COVID-19. As simple devices intended for out of hospital use, they were readily acceptable to ward staff with support, whilst bringing some benefits of ICU treatment out to the wards.

Concerns regarding the use of NIV have hinged on risks of viral aerosolisation, potential lack of efficacy, and confusion between BIPAP and CPAP regarding harmful overdistension.<sup>1</sup> Studies of disease transmission with NIV appear largely based on unfiltered exhalation ports.<sup>22-24</sup> Initial concerns about efficacy reflect findings in MERS, in which a study reported 5 NIV failures.<sup>25</sup> However, it is unclear whether CPAP or BIPAP was used - and neither was a denominator provided.

There are reasons to believe that CPAP can benefit COVID-19 patients who do not require immediate intubation. Unlike most causes of ARDS, lungs affected by COVID-19 can remain compliant and recruitable in early illness, with work of breathing remaining low in comparison to hypoxia caused by atelectatic changes.<sup>26</sup> CPAP can provide a sustained positive airway pressure, but does not increase tidal volume and remains lung protective.<sup>27</sup>

Prone positioning of intubated patients with severe ARDS now forms part of standard recommendations.<sup>28</sup> Early awake proning with NIV has also been found to be beneficial, leading to reduced intubation rates.<sup>29</sup> More recently, self proning has improved oxygen saturations in COVID-19 patients in emergency care.<sup>30</sup>

Considering all available information and our local context, Bradford chose to adopt the widespread early use of CPAP and self proning in the management of more severe COVID-19, with the aims of improving patient outcomes and keeping ICU demand under control. It was not feasible to admit all patients requiring CPAP to the ICU and an 'ICU without walls' approach became necessary. Our initial experience and outcomes are presented below.

## Methods

This single centre retrospective cohort study was conducted at Bradford Royal Infirmary, a teaching hospital in the UK.

## Intervention

Our approach was designed and delivered by a multidisciplinary team comprising doctors from critical care and respiratory, acute and emergency medicine, together with nursing staff and the physiotherapy department. It comprised several elements including awake proning, escalation planning, and usual ICU therapies. However, the core intervention was the use of early CPAP in moderate or severe respiratory failure due to COVID-19. This required a massive expansion of our capacity to deliver CPAP outside critical care.

As well as 21 existing NIV machines, 100 "Fixed CPAP" machines were used with low-flow oxygen entrained to deliver up to 60% FiO<sub>2</sub>. HME viral filters were added prior to the expiratory port, and they were used with non-vented masks. They were introduced on 3rd April 2020 in anticipation of a peak in demand approximately a week later.

A dedicated critical care outreach consultant was available 24 hours a day, undertaking twice daily outreach ward rounds. Patients on CPAP received daily respiratory physiotherapy sessions. Nurses and physiotherapists with experience in NIV were seconded to CPAP wards, providing additional support.

The protocol for managing respiratory failure in patients with confirmed or suspected COVID-19 is outlined in Figure 1, and was initiated as soon as possible either in ED, AMU or one of two designated CPAP inpatient wards. Despite the use of HME viral filters prior to any exhalation port,

the use of CPAP was considered to be aerosol generating and occurred only in designated 'red zones'.

Patients were educated about the benefits and indications for proning if able to comprehend and physically able to self-prone. Patients receiving CPAP were encouraged to prone for at least 30 minutes twice a day - in practice usually for a few hours.

Early discussion and documentation of escalation decisions was encouraged in line with GMC guidance. Compliance with this was excellent, aided by a COVID-19 proforma in the electronic patient record.

In the final week of this cohort a hospital protocol was developed which resulted in anticoagulation with a d-dimer threshold of 700mcg/L. During the study period, Bradford was a recruiting site for the RECOVERY trial<sup>31</sup> investigating treatments for COVID-19.

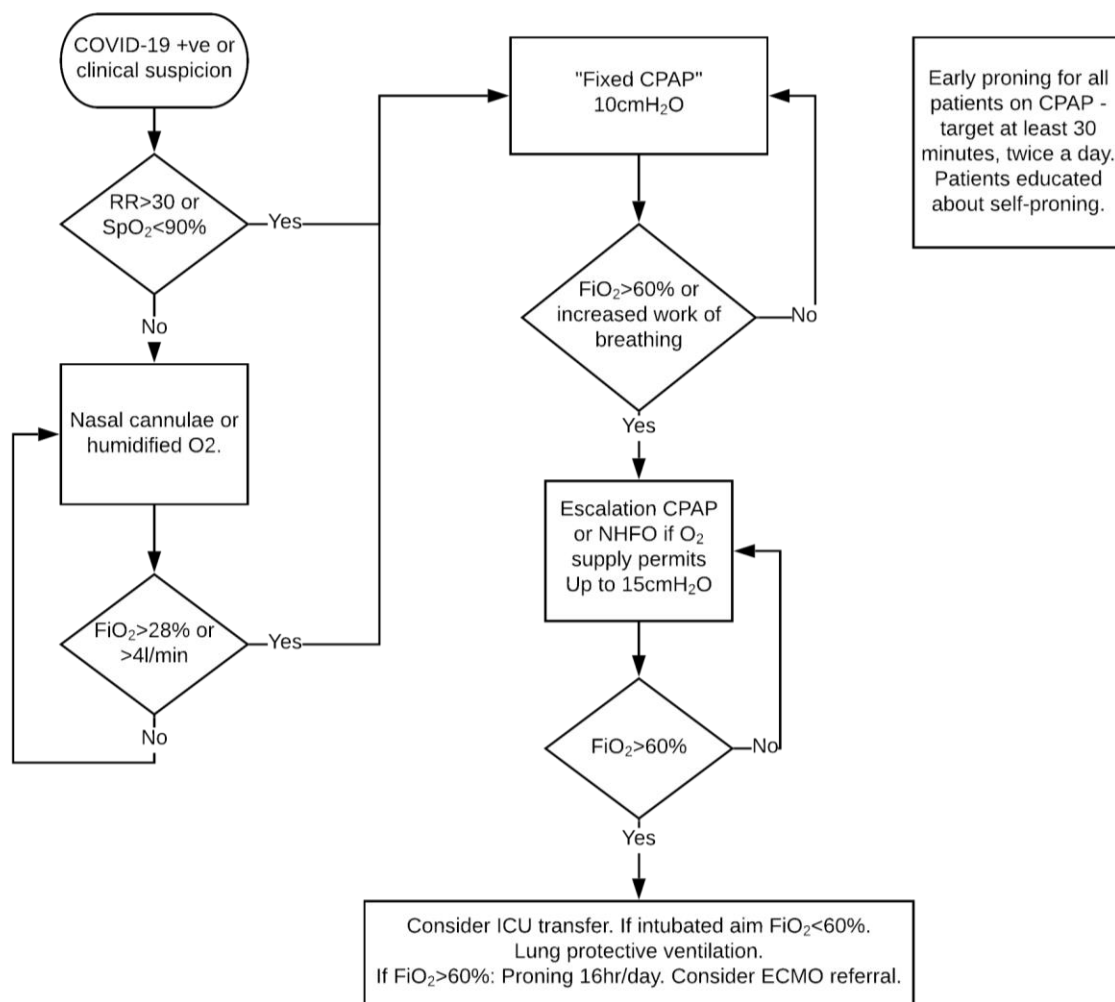


Figure 1 - COVID-19 respiratory protocol

## Data

We included all patients with a positive COVID-19 PCR test admitted to hospital prior to 1st May 2020, and other patients where the treating team considered COVID-19 the most probable diagnosis. Patients receiving CPAP were identified separately by daily review of wards capable of delivering NIV. The last data update was 1st June 2020; patients still inpatient at that time are excluded from mortality analysis. As an audit of practice reporting data only in aggregate, the need for formal ethical approval and consent were waived.

A retrospective review of the Electronic Patient Record (Cerner Millennium) was conducted. Demographic, admission and outcome data were collected for all patients. Selected co-morbidities, ceilings of care, ICU admissions and escalation to invasive ventilation were also recorded. Observations were recorded at first presentation of COVID-19 (respiratory rate, pulse oximetry, arterial gases, inspired oxygen therapy).

Where CPAP was used, the initial machine was documented together with duration of therapy and any escalation to use of an alternative machine. Observations before and after initiation of initial and escalation CPAP were recorded, as well as at the point of maximum support. Where CPAP was not used, maximum oxygen therapy was recorded.

Patients were assessed against two sets of intubation criteria based on widely publicised advice for COVID-19. Firstly, a respiratory rate  $\geq 20$  combined with oxygen saturations  $\leq 94\%$  and  $\geq 15\text{L/min}$  oxygen or equivalent, as advocated by NHS England on 26th March 2020<sup>4</sup> and still current.<sup>5</sup> Secondly, a ratio of arterial oxygen partial pressure to  $\text{FiO}_2$  (P:F) of  $< 200\text{mmHg}$  (26.6kPa), as recommended explicitly in German guidelines,<sup>32</sup> and implicitly in other guidelines recommending NIV is only used in mild ARDS.<sup>33</sup> These assessments were made prior to the use of CPAP (or at admission in patients who did not receive it), and at the point of highest respiratory support during CPAP use. Where arterial blood gas results were unavailable, a P:F ratio of  $< 200\text{mmHg}$  was taken to be equivalent to an oxygen saturation to  $\text{FiO}_2$  (S:F) ratio of  $< 214\%$ . We attempted to avoid false positives on this criterion by excluding patients with oxygen saturations above 94%, and using the lowest equivalent S:F ratio we found in reliable literature. The  $\text{FiO}_2$  of variable performance devices was also calculated conservatively, resulting in estimated oxygen concentrations lower than cited in the literature.<sup>34,35</sup>

Analysis was largely descriptive. Comparison was made with the ISARIC WHO CCP-UK cohort of 20133 UK patients,<sup>36</sup> noting that this cohort also contains data from Bradford. Outcomes were compared using the 2-tailed exact binomial test and the sign test for medians. Data were analysed in R 4.0.0 (R Core Team, 2020).

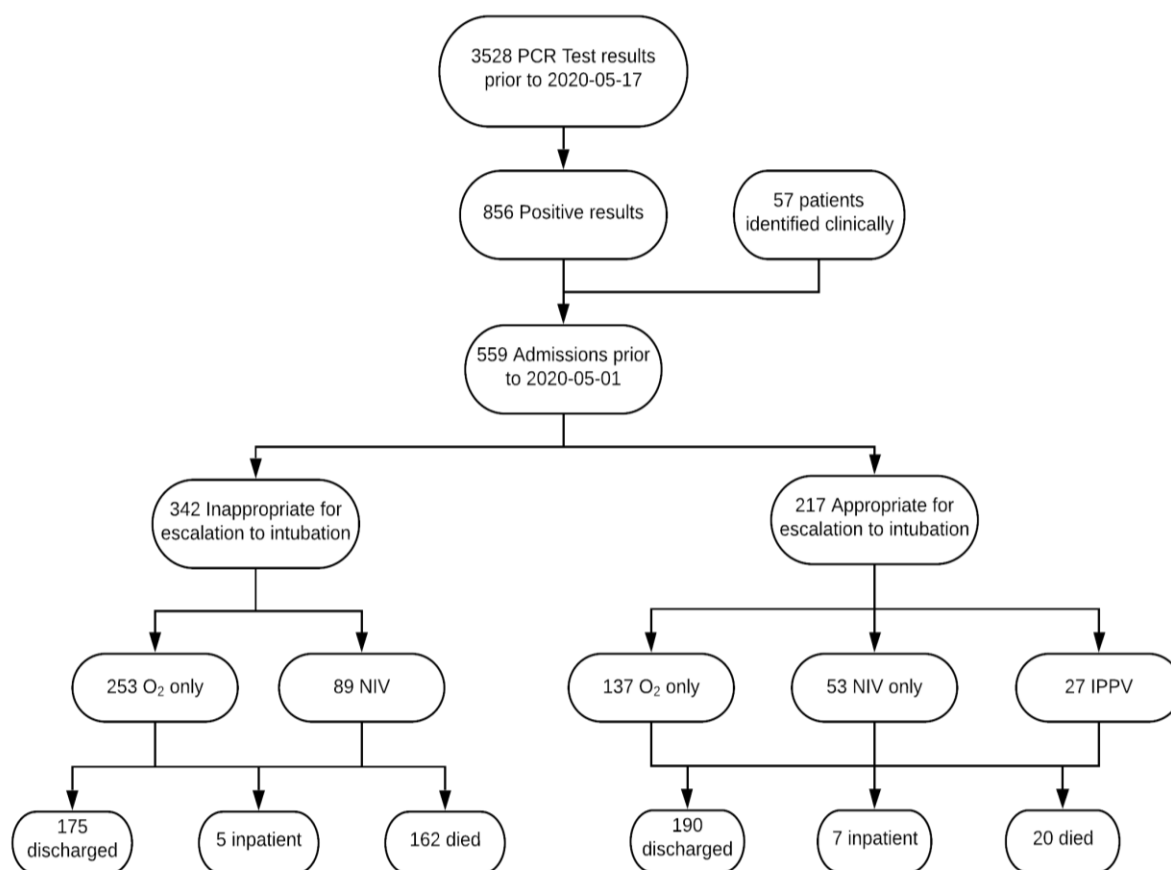
# Results

559 patients were included in the cohort, of whom 365 were discharged from hospital alive, 182 died, and 12 remain inpatient. All are included in the analysis except for mortality, where those still inpatient were excluded. A flow diagram for the cohort is given in Figure 2. Demographics and comorbidity results are given in Table 1. Comorbidity data is near complete except for obesity, as we lacked weight and height data for some patients. The proportion of all measured comorbidities in the cohort exceeded the ISARIC average, reflecting the overall poorer state of Bradford's health.

Cohort outcomes are given in Table 2. Bradford had a markedly lower ICU admission and intubation rate than the ISARIC cohort, with comparable hospital mortality overall and for ICU patients. Estimating from the ISARIC values, Bradford would have expected 55 patients requiring intubation and 92 ICU admissions. We intubated 27 patients from 40 admitted to ICU. Of these, 23 had been treated with NIV prior to intubation. We had a peak occupancy of 16 COVID-19 patients on ICU for a total of 21 patients. The third ICU was not required.

Results for the assessment of patients against two intubation criteria are detailed in Tables 3 and 4. In the group appropriate for intubation, the majority of patients (82.9%, 68 of 82) receiving CPAP demonstrated moderate or severe ARDS at some point during their stay and would have required intubation on some guidelines. However most of these patients (64.7%, 44 of 68) were treated with only CPAP and avoided intubation. In the group where intubation was not appropriate, meeting intubation criteria was associated with high mortality.

During preparation of this paper, ISARIC WHO CCP-UK released updated data which has been used in Tables 1 and 2.<sup>36</sup> It is worth noting that the earlier ISARIC data<sup>37</sup> had a lower proportion of NIV use (12.1%) and higher ICU admission rate (18.6%), which may reflect changing practice in the UK as opinion on CPAP use developed.



**Figure 2 - Study flow chart**



**Table 1 - Demographics and comorbidities**

	<b>n</b>	<b>Bradford patients</b>	<b>ISARIC patients<sup>36</sup></b>
Sex Male	559	54.7%	59.9%
Median Age (IQR) (range)	559	68 (53-81) (0-102)	72 (58-82) (0-104)
Hypertension	558	51.3%	45.3% <sup>37</sup>
Cardiac conditions	559	38.6%	30.9%
Obesity	469	35.4%	10.5%
Resp conditions	556	34.2%	32.1%
Diabetes	559	33.6%	28.1%
CKD	555	31.0%	16.2%
Smoking	524	11.5%	6.0%
Cancer	558	10.8%	10.4%

**Table 2 - Outcomes & 95% confidence intervals**

	<b>n</b>	<b>Bradford patients</b>	<b>ISARIC patients</b>	<b>p</b>
NIV use	559	29.5% (26%-33%)	15.9%	<0.0001
ICU admission	559	7.2% (5.2%-9.6%)	16.5%	<0.0001
Intubation	559	4.8% (3.2%-6.9%)	9.8%	<0.0001
Hospital mortality	547	33.3% (29%-37%)	38.6%	0.01
Mortality for ICU patients	33	54.5% (36%-72%)	53.7%	NS
Median Length of Stay (IQR)	547	7 (3-14)	7 (unreported IQR) <sup>37</sup>	NS

**Table 3 - Intubation criteria - group appropriate for intubation**

	Timing	Met criteria	Intubated at any point	Hospital Mortality
<i>SpO<sub>2</sub>≤94% &amp; RR≥20 &amp; FiO<sub>2</sub>≥60%</i>	Prior to any CPAP	7.8% (17 of 217)	58.8% (10 of 17)	40% (6 of 15)
	Worst during CPAP	42.1% (32 of 76)	62.5% (20 of 32)	46.4% (13 of 28)
<i>P:F ratio &lt;200mmHg or equivalent</i>	Prior to any CPAP	19.4% (42 of 217)	35.7% (15 of 42)	28.2% (11 of 39)
	Worst during CPAP	78.9% (60 of 76)	38.3% (23 of 60)	25.5% (14 of 55)

**Table 4 - Intubation criteria - group not appropriate for intubation**

	Timing	Met criteria	Hospital Mortality
<i>SpO<sub>2</sub>≤94% &amp; RR≥20 &amp; FiO<sub>2</sub>≥60%</i>	Prior to any CPAP	12.3% (42 of 342)	83.3% (35 of 42)
	Worst during CPAP	62.9% (56 of 89)	81.8% (45 of 55)
<i>P:F ratio &lt;200mmHg or equivalent</i>	Prior to any CPAP	19.3% (66 of 342)	86.2% (56 of 65)
	Worst during CPAP	83.1% (74 of 89)	76.7% (56 of 73)

## Discussion

Clearly this is an uncontrolled cohort study with many potential confounders, and evidence from randomised controlled trials will be required to elucidate the finer points of respiratory management in COVID-19. However this cohort provides strong evidence that CPAP can prevent the requirement for invasive ventilation in this disease. Response to CPAP must be rapidly and repeatedly assessed as some patients will still require invasive ventilation, and patients with COVID-19 can deteriorate quickly. Whilst we used early CPAP and proning at Bradford, it is not clear whether our results relate to the timeliness of intervention or the use of CPAP at all; it may be that we could have achieved the same results using CPAP only later on. However this would have probably necessitated more ICU admissions even if intubation were avoided.

Whilst the majority of patients were identified from lists of positive PCR results, we also included patients being treated as COVID-19 on clinical grounds. Our close supervision of patients receiving CPAP mean we may have been more likely to identify these patients than if they were elsewhere in the hospital. We tried to avoid this by accessing data from the hospital command centre, though this depended on teams reporting COVID-19 suspicions centrally.

We chose to compare against ISARIC as the largest UK dataset with detailed comorbidity and outcome data. As a product of research-active hospitals we expect its results to be as good as or better than average.<sup>38</sup> Bradford's data being included in the ISARIC cohort will tend to dilute the differences seen.

Throughout the study period, there were no documented delays in commencing CPAP due to the unavailability of a machine. In practice, the initial machine was often the one to hand, unless higher levels of respiratory support were needed in which case the "fixed CPAP" devices were frequently bypassed in favour of more advanced machines. However, we do not feel this undermines our approach, which had at its core a pragmatic desire to maximise the number of patients able to benefit from CPAP therapy. In fact, "fixed CPAP" devices played a key role in freeing up other machines, for example as 'step down' machines in recovering patients.

Assessment against the two sets of intubation criteria showed a large proportion of patients who fulfilled criteria but were treated with CPAP instead. Because a number of patients were quickly put onto CPAP as a first therapy and improved, they never fulfilled the criteria relating to oxygen use. Also, the point of highest support recorded in the data was not always where the P:F ratio was lowest. We therefore regard the numbers as an underestimate of those who might have fulfilled criteria had our CPAP protocol not been in use. The high rates of meeting those criteria in the group treated with CPAP reflect that our protocol was selecting patients with more severe COVID-19 for CPAP treatment.

Despite a greater burden of comorbidities than the ISARIC cohort, and serving a population expected to have poor outcomes, Bradford managed a much lower ICU admission and intubation rate with a comparable or lower mortality. Many patients who would have required invasive ventilation under early guidance were able to recover on CPAP without the exposure to the multiple potential harms resulting from invasive ventilation on the ICU. Intubated patients would be expected to stay longer,

decondition more, and suffer more iatrogenic lung injury so CPAP may have reduced morbidity in the longer term. Equally, the comparable mortality rate for patients admitted to ICU suggests that the use of early CPAP to prevent intubation did not result in harm where it only delayed deterioration.

## Conclusions

This approach is relatively low cost and low tech. By reducing ventilator demand it does not rely on a surplus of highly trained staff, nor on a generous oxygen supply. As such we consider it may have wider applicability outside the UK healthcare system.

At the time of submission, we consider the first wave to be concluded in Bradford. Our second ICU is currently closed. Based on our experience, we intend to continue early CPAP during any second wave, and we would recommend other centres consider the use of CPAP and proning in any patient with more severe COVID-19.

## Acknowledgements

We thank Kirstin McGregor, Peter Szedlak, Margaret Aslet, Rosa Gallie, Matthew Bromley, Laura Stephenson, Daniel Cummings, and Caroline Bonner (all BTHFT) for their work on data collection; and the BTHFT physiotherapy, respiratory, A&E, critical care, and acute medicine teams for their work with protocols and supporting this project.

## Funding

None

## Declaration of interests

TL is involved in the development of an open source CPAP device for use in low-income countries under an EPSRC grant (no funding received).

RJ reports grants from Abbott Electro-physiology Research Fund, outside the submitted work.

KW, AC, LM, MM, EN have nothing to disclose.

# References

1. Clinical management of severe acute respiratory infection when COVID-19 is suspected [Internet]. World Health Organization; 2020 Mar [cited 2020 May 14]. Report No.: WHO/2019-nCoV/clinical/2020.4. Available from: [https://www.who.int/publications-detail/clinical-management-of-severe-acute-respiratory-infection-when-novel-coronavirus-\(ncov\)-infection-is-suspected](https://www.who.int/publications-detail/clinical-management-of-severe-acute-respiratory-infection-when-novel-coronavirus-(ncov)-infection-is-suspected)
2. Clinical guide for the management of critical care patients during the coronavirus pandemic - Version 1. NHS England; 2020 Mar.
3. Clinical guide for the use of acute non-invasive ventilation in adult patients hospitalised with suspected or confirmed coronavirus during the coronavirus pandemic - Version 1 [Internet]. NHS England; 2020 Mar [cited 2020 May 7]. Available from: <https://web.archive.org/web/20200325190117/https://www.england.nhs.uk/coronavirus/wp-content/uploads/sites/52/2020/03/clinical-guide-acute-niv-ventilation-v1-19-march-2020.pdf>
4. Guidance for the role and use of non-invasive respiratory support in adult patients with coronavirus (confirmed or suspected) - Version 2 [Internet]. NHS England; 2020 Mar [cited 2020 May 7]. Available from: <https://amhp.org.uk/app/uploads/2020/03/Guidance-Respiratory-Support.pdf>
5. Guidance for the role and use of non-invasive respiratory support in adult patients with COVID-19 (confirmed or suspected) - Version 3 [Internet]. NHS England; 2020 Apr [cited 2020 May 7]. Available from: <https://www.england.nhs.uk/coronavirus/wp-content/uploads/sites/52/2020/03/specialty-guide-NIV-respiratory-support-and-coronavirus-v3.pdf>
6. Clinical guide for the management of critical care for adults with COVID-19 during the coronavirus pandemic - Version 2. NHS England; 2020 Apr.
7. Meadows C. Information about 2019-nCoV for UK Critical Care Departments [Internet]. HCID(A) Network of Adult Critical Care Units; 2020 [cited 2020 May 7]. Available from: [https://www.ics.ac.uk/ICS/ICS/Pdfs/News/Official\\_2019-nCoV\\_critical\\_care\\_FAQ\\_and\\_advice.aspx](https://www.ics.ac.uk/ICS/ICS/Pdfs/News/Official_2019-nCoV_critical_care_FAQ_and_advice.aspx)
8. Penney B. The English Indices of Deprivation 2019. Ministry of Housing, Communities & Local Government; 2019 Sep.
9. Colborn C. Ethnicity in Bradford [Internet]. City of Bradford Metropolitan District Council; 2017 Jan [cited 2020 Jun 4]. (Intelligence Bulletin). Available from: <https://ubd.bradford.gov.uk/media/1348/ethnicity-in-bradford.pdf>
10. Quality and Outcomes Framework, Achievement, prevalence and exceptions data 2018-19 [PAS] [Internet]. NHS Digital; 2019 Oct [cited 2020 Jun 5]. Available from: <https://digital.nhs.uk/data-and-information/publications/statistical/quality-and-outcomes-framework-achievement-prevalence-and-exceptions-data/2018-19-pas>
11. COVID-19: review of disparities in risks and outcomes [Internet]. Public Health England; 2020 Jun [cited 2020 Jun 2]. Available from: <https://www.gov.uk/government/publications/covid-19-review-of-disparities-in-risks-and-outcomes>
12. Guan W, Liang W, Zhao Y, Liang H, Chen Z, Li Y, et al. Comorbidity and its impact on 1590 patients with Covid-19 in China: A Nationwide Analysis. Eur Respir J [Internet]. 2020 Jan 1 [cited 2020 Jun 5]; Available from: <https://erj.ersjournals.com/content/early/2020/03/17/13993003.00547-2020>
13. Ferguson N, Laydon D, Nedjati Gilani G, Imai N, Ainslie K, Baguelin M, et al. Report 9: Impact of non-pharmaceutical interventions (NPIs) to reduce COVID19 mortality and healthcare demand [Internet]. Imperial College London; 2020 Mar [cited 2020 May 15]. Available from: <http://spiral.imperial.ac.uk/handle/10044/1/77482>
14. Sun Q, Qiu H, Huang M, Yang Y. Lower mortality of COVID-19 by early recognition and

- intervention: experience from Jiangsu Province. *Ann Intensive Care*. 2020 Mar 18;10(1):33.
15. Guan W, Ni Z, Hu Y, Liang W, Ou C, He J, et al. Clinical Characteristics of Coronavirus Disease 2019 in China. *N Engl J Med*. 2020 Apr 30;382(18):1708–20.
16. Huang C, Wang Y, Li X, Ren L, Zhao J, Hu Y, et al. Clinical features of patients infected with 2019 novel coronavirus in Wuhan, China. *The Lancet*. 2020 Feb;395(10223):497–506.
17. Wang D, Hu B, Hu C, Zhu F, Liu X, Zhang J, et al. Clinical Characteristics of 138 Hospitalized Patients With 2019 Novel Coronavirus–Infected Pneumonia in Wuhan, China. *JAMA*. 2020 Mar 17;323(11):1061–9.
18. Yang X, Yu Y, Xu J, Shu H, Xia J, Liu H, et al. Clinical course and outcomes of critically ill patients with SARS-CoV-2 pneumonia in Wuhan, China: a single-centered, retrospective, observational study. *Lancet Respir Med*. 2020 May;8(5):475–81.
19. Grasselli G, Zangrillo A, Zanella A, Antonelli M, Cabrini L, Castelli A, et al. Baseline Characteristics and Outcomes of 1591 Patients Infected With SARS-CoV-2 Admitted to ICUs of the Lombardy Region, Italy. *JAMA*. 2020 Apr 28;323(16):1574–81.
20. Murthy S, Gomersall CD, Fowler RA. Care for Critically Ill Patients With COVID-19. *JAMA*. 2020 Apr 21;323(15):1499–500.
21. Moonesinghe R, Menzies-Gow A, Eggleston A. Use of high flow Oxygen therapy devices (including wall CPAP and high flow face mask or nasal oxygen) during the Coronavirus epidemic [Internet]. 2020. Available from: <https://www.cas.mhra.gov.uk/ViewandAcknowledgment/ViewAlert.aspx?AlertID=103013>
22. Ferioli M, Cisternino C, Leo V, Pisani L, Palange P, Nava S. Protecting healthcare workers from SARS-CoV-2 infection: practical indications. *Eur Respir Rev* [Internet]. 2020 Mar 31 [cited 2020 May 15];29(155). Available from: <https://err.ersjournals.com/content/29/155/200068>
23. Tran K, Cimon K, Severn M, Pessoa-Silva CL, Conly J. Aerosol Generating Procedures and Risk of Transmission of Acute Respiratory Infections to Healthcare Workers: A Systematic Review. *PLoS ONE* [Internet]. 2012 Apr 26 [cited 2020 May 15];7(4). Available from: <https://www.ncbi.nlm.nih.gov/pmc/articles/PMC3338532/>
24. Fowler RA, Guest CB, Lapinsky SE, Sibbald WJ, Louie M, Tang P, et al. Transmission of Severe Acute Respiratory Syndrome during Intubation and Mechanical Ventilation. *Am J Respir Crit Care Med*. 2004 Jun 1;169(11):1198–202.
25. Arabi YM, Arifi AA, Balkhy HH, Najm H, Aldawood AS, Ghabashi A, et al. Clinical Course and Outcomes of Critically Ill Patients With Middle East Respiratory Syndrome Coronavirus Infection. *Ann Intern Med*. 2014 Mar 18;160(6):389–97.
26. Gattinoni L, Coppola S, Cressoni M, Busana M, Rossi S, Chiumello D. Covid-19 does not lead to a “typical” acute respiratory distress syndrome. *Am J Respir Crit Care Med*. 2020;201(10):1299–1300.
27. Agarwal R, Aggarwal AN, Gupta D. Role of Noninvasive Ventilation in Acute Lung Injury/Acute Respiratory Distress Syndrome: A Proportion Meta-analysis. *Respir Care*. 2010 Dec 1;55(12):1653–60.
28. Fan E, Del Sorbo L, Goligher EC, Hodgson CL, Munshi L, Walkey AJ, et al. An Official American Thoracic Society/European Society of Intensive Care Medicine/Society of Critical Care Medicine Clinical Practice Guideline: Mechanical Ventilation in Adult Patients with Acute Respiratory Distress Syndrome. *Am J Respir Crit Care Med*. 2017 May 1;195(9):1253–63.
29. Ding L, Wang L, Ma W, He H. Efficacy and safety of early prone positioning combined with HFNC or NIV in moderate to severe ARDS: a multi-center prospective cohort study. *Crit Care*. 2020 Jan 30;24(1):28.
30. Caputo ND, Strayer RJ, Levitan R. Early Self-Prone in Awake, Non-intubated Patients in the Emergency Department: A Single ED’s Experience during the COVID-19 Pandemic. *Acad Emerg Med* [Internet]. [cited 2020 May 7];n/a(n/a). Available from: <https://onlinelibrary.wiley.com/doi/abs/10.1111/acem.13994>
31. Peter Horby. A randomised trial of treatments to prevent death in patients hospitalised with

- COVID-19 (coronavirus) [Internet]. ISRCTN; [cited 2020 Jun 2]. Available from: <https://doi.org/10.1186/ISRCTN50189673>
32. Kluge S, Janssens U, Welte T, Weber-Carstens S, Marx G, Karagiannidis C. German recommendations for critically ill patients with COVID-19. Med Klin - Intensivmed Notfallmedizin [Internet]. 2020 Apr 14 [cited 2020 Jun 2]; Available from: <http://link.springer.com/10.1007/s00063-020-00689-w>
  33. Phua J, Weng L, Ling L, Egi M, Lim C-M, Divatia JV, et al. Intensive care management of coronavirus disease 2019 (COVID-19): challenges and recommendations. Lancet Respir Med. 2020 May 1;8(5):506–17.
  34. Paz JC, West MP. Acute Care Handbook for Physical Therapists E-Book. Elsevier Health Sciences; 2019. 561 p.
  35. Helen Schaar-corning, Stanley Louis Bryant Jr. Data-stat Respiratory Therapy Desk Reference. Lulu.com; 2007. 165 p.
  36. Docherty AB, Harrison EM, Green CA, Hardwick HE, Pius R, Norman L, et al. Features of 20 133 UK patients in hospital with covid-19 using the ISARIC WHO Clinical Characterisation Protocol: prospective observational cohort study. BMJ. 2020 May 22;m1985.
  37. ISARIC Team. International Severe Acute Respiratory and Emerging Infections Consortium (ISARIC) COVID-19 Report: 06 May 2020 [Internet]. ISARIC; 2020 May [cited 2020 May 23] p. 29. Available from: <https://isaric.tghn.org/>
  38. Ozdemir BA, Karthikesalingam A, Sinha S, Poloniecki JD, Hinchliffe RJ, Thompson MM, et al. Research Activity and the Association with Mortality. PLOS ONE. 2015 Feb 26;10(2):e0118253.

# Research in context

## Evidence before this study

We searched PubMed and medRxiv for articles published between January 2020 and the start of this study delineating the use of early continuous positive airway pressure (CPAP) in the treatment of COVID-19, using the search terms (“covid” or “covid-19” or “coronavirus”) and (“CPAP” or “NIV” or “prone” or “proning”). We found several case series documenting the use of NIV, but only one paper describing the principles of systematic early CPAP and proning leading to reduced rates of mechanical ventilation. However, this study contained little detail on the delivery of CPAP therapy and also described a low threshold for ICU admission. We found no published accounts of widespread CPAP use outside critical care.

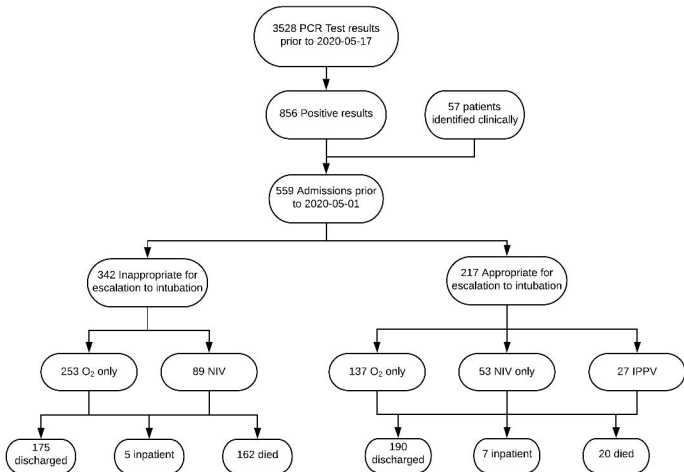
## Added value of this study

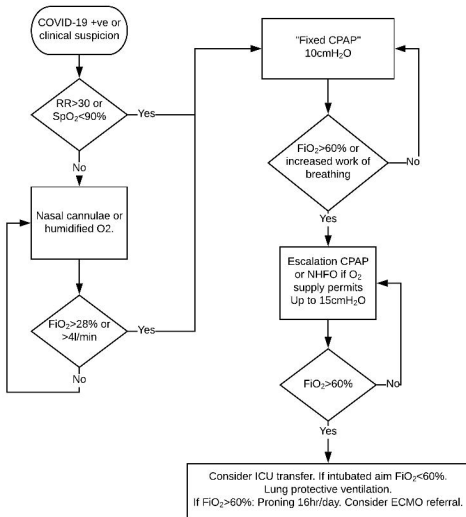
To our knowledge, this is the largest observational study to date to feature an in-depth exposition of early CPAP and proning outside critical care. 559 COVID-19 patients were included, with 182 receiving CPAP. Our analysis demonstrates favourable rates of ICU admission, intubation and mortality. Many patients who met previously recommended intubation criteria were successfully managed without this, moreover reported outcomes were no worse where intubation was ostensibly delayed for a trial of non invasive ventilation. Additionally, we furnish a detailed account of our pragmatic and multi-disciplinary approach which we hope may be of interest to fellow clinicians, either as a model to manage further waves of COVID-19, or alternatively to free up ICU capacity for resumption of pre-COVID hospital activity.

## Implications of all the available evidence

This dataset adds considerably to a growing body of evidence that early CPAP and proning can safely be recommended as a treatment strategy for COVID-19, reducing exposure to the risks of sedation and mechanical ventilation. Its widespread delivery can be organised in a resource-efficient manner to avoid overwhelming hospital capacity.







Early prone for all patients on CPAP - target at least 30 minutes, twice a day. Patients educated about self-prone.