

INTRAREGIONAL PROPAGATION OF COVID-19 CASES IN PARÁ, BRAZIL.

ASSESSMENT OF ISOLATION REGIME TO LOCKDOWN.

Félix Lélis da Silva ^a, Javier Dias Pita ^b, Maryjane Diniz A. Gomes ^c, Andréa P. Lélis da Silva ^d, Gabriel Lélis P. da Silva ^e

^{a, b, c} Federal Institute of Science and Technology of Pará – IFPA Campus Castanhal

^{a, b, b} Research Group for Biosystems Management, Modeling and Experimentation - GEMAbio

^d Metropolitan Regional Hospital, Specialist in Intensive Care Unit

^e Estácio de Sá College of Castanhal, Law undergraduate student.

corresponding author (s): Félix Lélis da Silva (felix.jelis@ifpa.edu.br), Javier Dias Pita (javier.pita@ifpa.edu.br), Maryjane Dias A. Gomes (maryjane.gomes@ifpa.edu.br), Andréa P. Lélis da Silva (andlelis@yahoo.com.br), Gabriel Lélis P. da Silva (biellellis@yahoo.com.br).

Abstract

Due to the high incidence of COVID-19 case numbers internationally, the World Health Organization (WHO) declared a Public Health Emergency of global relevance, advising countries to follow protocols to combat pandemic advance through actions that can reduce spread and consequently avoid a collapse in the local health system. On March 18, 2020, Pará notified the first case of COVID-19. After seven weeks, the number of confirmed cases reached 4,756 with 375 deaths. Knowing that infected people may be

asymptomatic, the disease symptomatology absence and the population's neglect of isolation influence the spread, and factors such as chronic pneumonia, high age, obesity, chronic kidney diseases and other comorbidities favor the mortality rate. On the other hand, social isolation, quarantine and lockdown seek to contain the intraregional contagion advance. This study analyzes the dynamics of COVID-19 new cases advance among municipalities in the state of Pará, Brazil. The results show it took 49 days for 81% of the state's municipalities to register COVID-19 cases. The association between social isolation, quarantine and lockdown as an action to contain the infection was effective in reducing the region's new cases registration of COVID-19 in the short-term.

Keywords: Coronavirus, syndrome, contagion, advance, control.

1. Introduction

The COVID-19 pandemic stands out as the main global health crisis (Wu et al., 2020). It started in Wuhan, China in December 2019 (Şahin, 2020; Ahmadi et al., 2020; See et al., 2020). It is a respiratory infection caused by the coronaviruses family (2019-nCoV) (Prata et al., 2020). Its etiological agent is Sars-CoV-2 (Saez et al., 2020; Yang et al., 2020), which causes severe acute respiratory syndrome (SARS) (Solé et al., 2020). The viral infection presents severe clinical symptoms such as fever, dry cough, dyspnea, and pneumonia (Coccia, 2020; Wu et al., 2020) and can cause the death of the infected (Waldecy; David; Wainesten; 2020). Flu is one of the main causes of illnesses and death in the world (Mertz et al., 2013).

Epidemiological data associated with COVID-19 infection has shown different dynamics in several countries (Marson; Ortega, 2020). Several studies have shown the

reverse effect of rising temperatures and the confirmed number of new cases (Zhu and Xie, 2020; Wu et al. 2020). Brazil, a country with a tropical climate, with an average annual temperature ranging from 16 to 27.4 °C, modeled results show a negative effect on the linear relationship of temperature with the new confirmed cases number (Prata et al., 2020).

Several factors have contributed to pandemic advance in Brazil, as the country, in addition to having a deficiency in the number of doctors per inhabitant, the number of ICU beds and ventilators available for urgent and emergency cases, presents several risk groups, such as: elderly over 60 years old, people with prognostic comorbidity, indigenous people and population's great genetic variation (Marson; Ortega, 2020).

Government actions to mitigate the COVID-19 epidemic curve have been adopted in several countries. In Spain, according to Saez (2020), measures of social distancing led to a cases curve flattening, after the first few days the cumulative change rate in new cases decreased by an average of 3.059 percentage points daily. In Pará state, high mortality and lethality rates were reported even with social isolation, which raised the curve of new cases and directly affected hospital care due to overcrowding by infected people. On May 6, 2020, a more extreme control policy was decreed by the State of Pará government aimed at containing the pandemic advance, setting the lockdown model in the metropolitan region and neighboring municipalities.

People's traffic control measures are fundamental in controlling the pandemic progress. According to Kucharski et al. (2020), the cases' reduction of COVID-19 in Wuhan observed in February 2020, coincided with traveling control measures adopted in the region.

Therefore, it has been suggested that environmental factors and social control through social distancing tend to control the new cases and deaths numbers due to

COVID-19. As well, the deficiency in the health system associated with the reduced number of intensive-care physicians, low numbers of mechanical ventilators, the minimum number of available beds, and the specific medication absence tend to compromise the diagnosed population care. It is questioned: What are the dynamics of new community cases and mortality records evolution due to COVID-19 in subtropical regions with temperatures between 20 and 35 °C, with social distancing by quarantine and lockdown adoption?

2. Materials and methods

2.1 Study area

The study was carried out in 114 affected municipalities among the 144 existing in the state of Pará, North region, Brazil (Fig.1). The state has a territorial extension of 247,689,515 km² and an estimated population of 8,602,285 people, with 8,191,559 residents in urban areas and 2,389,492 in rural areas, with a population density of 6.07 inhabitants/km² and an average Human Development Index of (HDI = 0.698) (BIGS, 2020).

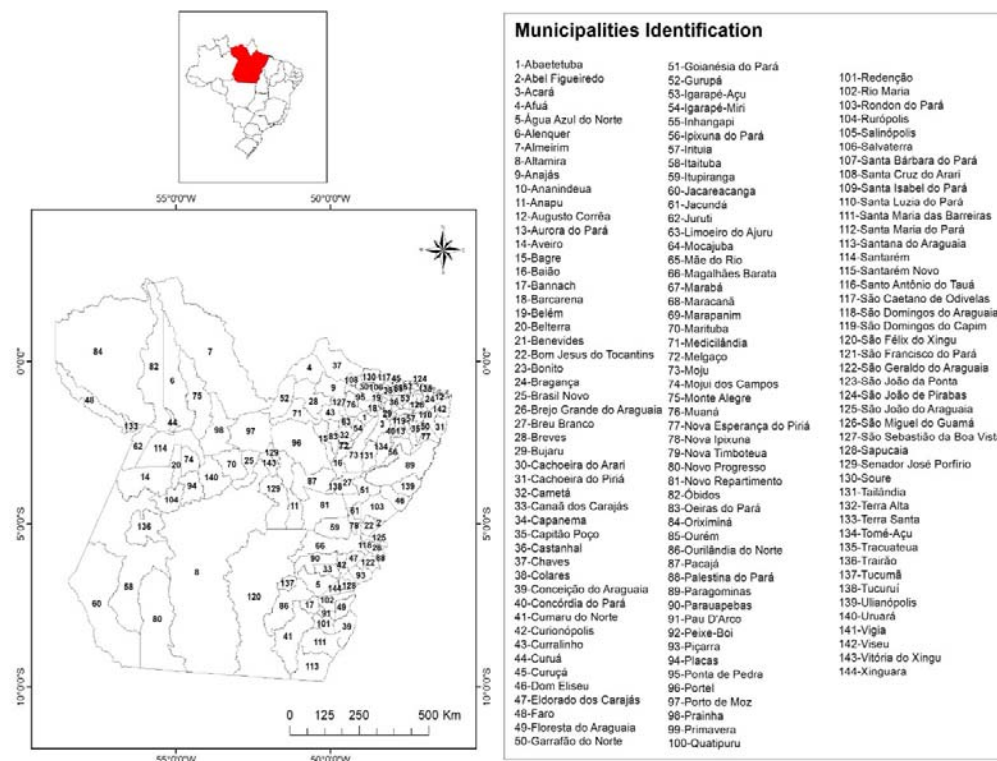


Fig. 1. State of Pará, Northern Brazil and its 144 municipalities.

2.2. Data collection

The cumulative daily number of deaths by age group and sex of COVID-19 cases in 114 municipalities in the state of Pará, with a record of infection, were obtained through the daily monitoring of technical bulletins provided by the State of Pará Public Health Secretary (SHSP, 2020). General data for Brazil and its northern region were obtained from the Secretary of Health Surveillance of the Ministry of Health (BRAZIL, 2020).

2.3. Statistical analysis

Since understanding the dynamics of infection spread can favor more effective public control policies and allow control of transmission in new regions, an exploratory data analysis (EDA) was carried out, with numerical variables described using means,

standard deviations, coefficient of variation, distributions and Pareto. Weekly maps were built for the new accumulated cases, in the period of 49 days, to assess the spread of the COVID-19 pandemic in the municipalities of the state of Pará. It was used a classification method using the Jenks algorithm based on the Absolute Deviations over the Median of the Classes.

3. Results and Discussion

3.1 Descriptive analysis

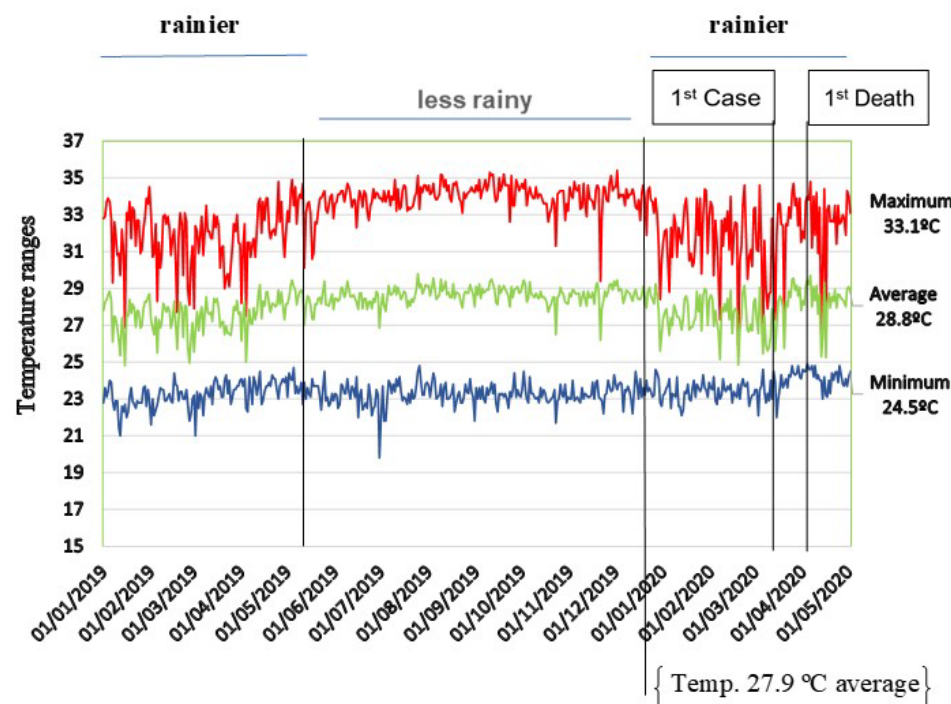
In Brazil, on May 5, 2020, 114,715 cases of COVID-19 were registered and 7,921 deaths, with a lethality rate of 6.8%, the Southeast and Northeast regions are the most affected counting around 75% of the registered cases (Fig 2B). The most affected regions in the country are the Southeast (64,756; 44.6%), followed by the Northeast (45,724; 31.5%) and North (23,207; 16.0%) (BRASIL, 2020). In the North, the state of Amazonas had the largest number of confirmed infected, 10,727 cases and disease lethality around 874 registered deaths. The country on May 6, 2020, registered 114,715 cases and 7,921 deaths.

In Northern Brazil, the federative units most affected on May 5, 2020, in terms of the spatial distribution of registered cases of COVID-19 with an incidence and mortality rate per 1,000,000 inhabitants, were Amazonas (2327.5 and 251.7) and Pará (627.4 and 49.5). The capital of Pará has the highest incidence (1,816.4/1,000,000 inhabitants) Fig. 3A) and mortality (240/1,000,000 inhabitants) with a mortality rate of 9.9% (Fig. 3B).

Predictive studies in Brazil report smaller records of new cases of COVID-19 at temperatures around 25.8°C, reducing the behavior of curve growth (Prata et al., 2020).

129 Since SARS-CoV-2 may be vulnerable to fluctuations in environmental conditions
130 similar to other coronaviruses (Le et al., 2020). It is important to note that
131 climatological factors variability can interfere with the curve behavior even at higher
132 temperatures.

133 The northern region of Brazil has an equatorial climate ranging from humid to
134 semi-arid, with temperatures ranging from 20 to 35 °C. In the state of Pará, the
135 temperature presents spatial and seasonal homogeneity, with an average variation of 25
136 °C to 35 °C. In the region, there are two distinct periods of temperature ranges,
137 classified as rainier between December to May and less rainy between June to
138 November, according to rainfall variation that occurs in the Amazon. The metropolitan
139 region of Belém city in the period between January 1, 2020, to May 5, 2020, presented
140 temperature variation between 24 °C to 31 °C and relative humidity between 70 to 80%.
141 In this period, the number of new cases and mortality due to COVID-19 has risen since
142 the first case notification on March 18, 2020, with the first death recorded on April 1,
143 2020 (Fig.2).



145 **Fig. 2.** Temperature behavior (°C), rainfall behavior, 1st confirmed case and 1st death
146 registration by COVID-19 in the state of Pará.

147

148 The North region was in 3rd place in cases number with approximately 16% of
149 the confirmed cases on May 5, 2020. In the state of Pará, the outbreak of COVID-19
150 registered a record of 4,756 cases with an incidence rate of 788 cases in 49 days after
151 the first infection confirmation. The first confirmed case of the disease was notified on
152 March 18, 2020, in Belém city, capital of the state. These records occurred when the
153 average temperature of the region, for the period considered to be the rainiest in the
154 region, was 27.9 °C and the air relative humidity ranging from 70 to 80%. The first
155 notification of death occurred on April 1, 2020, and since then the curve of new cases
156 and deaths incidence have been frequent and registered with high rates in the region.

157 *A priori* it is suggested that there is no inverse relationship between ambient
158 temperature and new cases of COVID-19 in Pará in the period considered as the rainiest
159 in the Amazon region. Therefore, there is no evidence to suppose that in regions with
160 warm climates, low relative humidity and high rainfall variation, the cases number is
161 lower compared to regions with moderate and/or cold climates. Similar results were
162 obtained by Jahangiri, Jarangiri, Njafgholipour (2020) in the transmission rate
163 evaluation of the new coronavirus in different provinces of Iran.

164 Fig. 3 summarizes the overall cases number compared to diagnosed population
165 sex, the cumulative daily descriptive statistics of newly notified cases of COVID-19,
166 and the age group distribution behavior of diagnosed population with the infection since
167 the first disease case notified in the State of Pará.

168 The analysis was carried out after seven weeks of the first COVID-19 case
169 recorded in Pará, being 4,756 cases reported between March 18 to May 5, 2020. Of the

total, 2,420 (50.9%) diagnosed cases were men and had an average age of 45.6 years. The women were 2,320 (48.8%) infected cases with an average age of 47.4 years. It is reported that 15 registered cases did not present notification regarding gender and were considered as unidentified (Fig. 3A). Similar results of higher COVID-19 cases prevalence in men were obtained by Chen et al. (2020) and Nikpouraghdam et al., (2020).

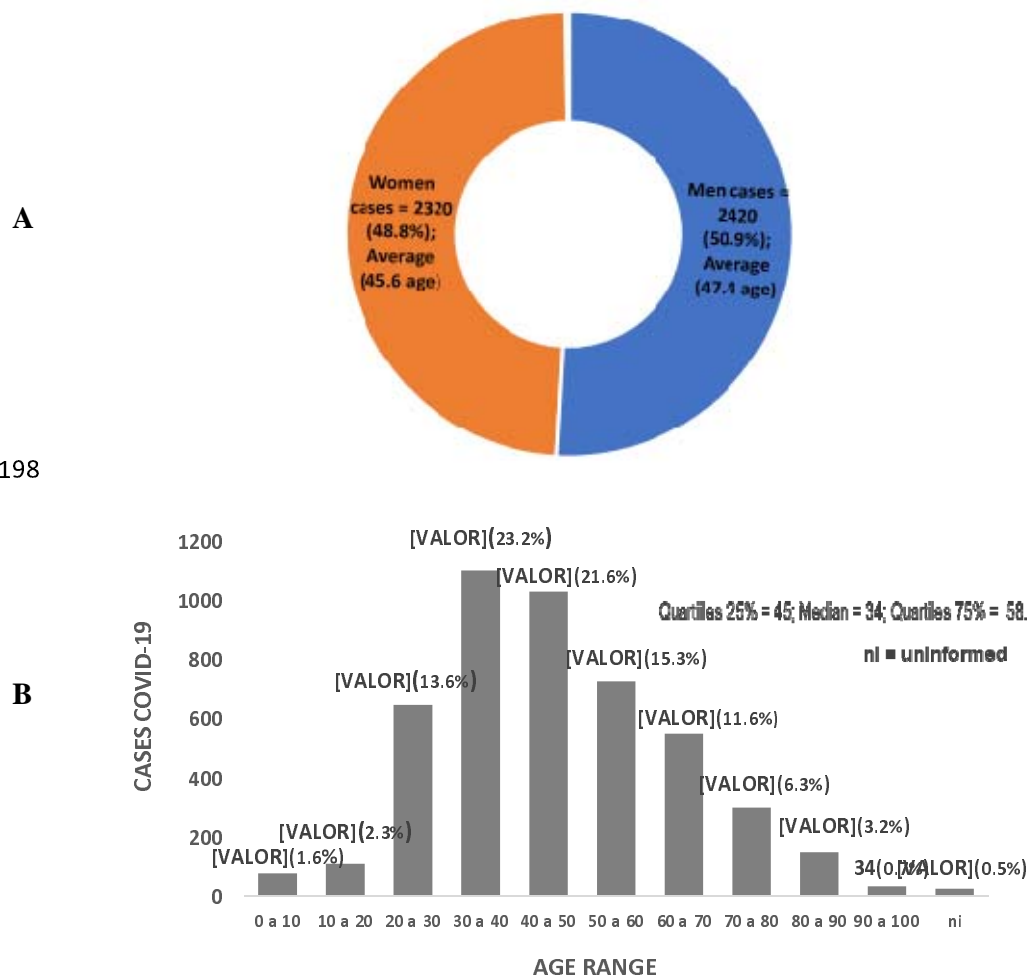
In Pará, 75% were under 58 years old. Only 25% of infected cases were elderly and 1.6% of those diagnosed infected were children from 0 to 10 years old. Only 26 (0.5%) registered cases had no age identified and were considered in terms of registration as “unidentified” (Fig. 3B).

In terms of the sample of the infected population age range, negative asymmetric behavior was identified for distribution, with ages concentration around the median of 34 years old, with 80% of cases diagnosed aged between 20 and 60 years old (Fig. 3C). In Iran, the cases concentration was between 30 and 70 years old for 79.1% of COVID-19 records and approximately 39% for the elderly (Nikpouraghdam et al., 2020).

Concerned with the new cases and mortality rates, the government of Pará established a decree for lockdown in the capital and additional nine municipalities to increase the social isolation index, reducing the disease spread and reducing the new cases registration number of COVID-19.

The restrictive measure was initially focused on forcing social isolation in the municipalities of Belém, Ananindeua, Marituba, Benevides, Santa Bárbara do Pará, Santa Izabel do Pará, Castanhal, which form the Belém Metropolitan Region (BMR) and inland towns, such as Santo Antonio do Tauá, Vigia de Nazaré and Breves. The lockdown arises when the state of Pará registered a COVID-19 rate in the order of 51/100,000 inhabitants, higher than the national rate. The municipalities affected by the

195 restriction presented rates of 75/100,000 inhabitants, higher than that registered by the
196 state.
197



199

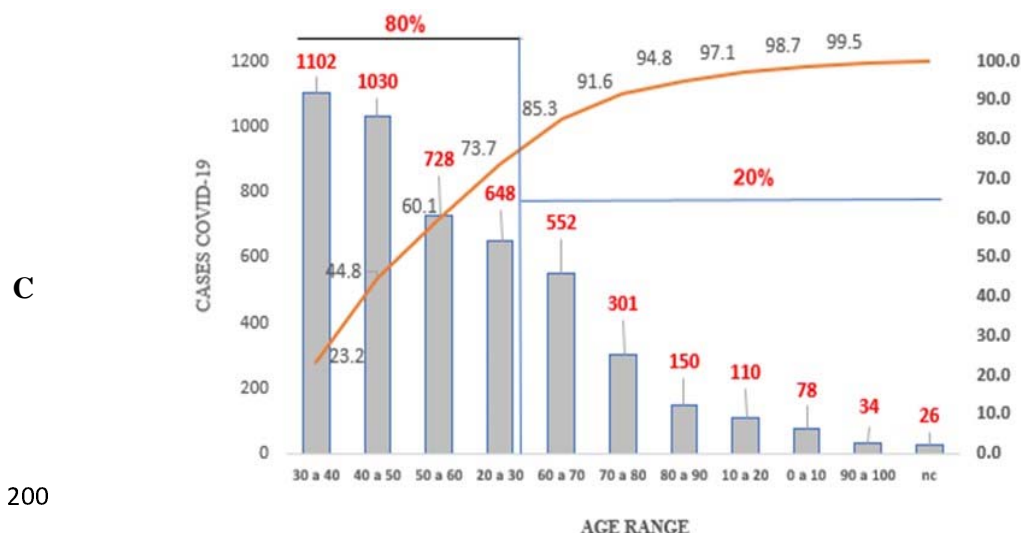


Fig. 3. Exploratory statistical analysis of the confirmed cases accumulated of COVID-19 by sex (A), age group (B) and Pareto distribution of ages (C) of those infected, Pará-Brazil.

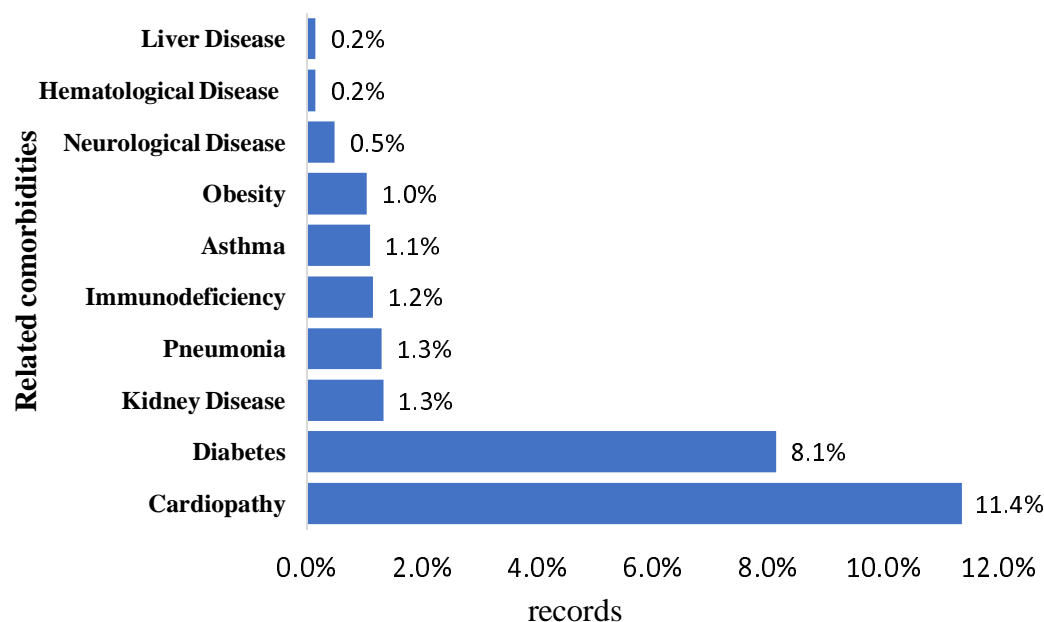
Despite the restrictions having focused on only 10 municipal regions, it is worth mentioning that when the lockdown was set, more than 70% of the municipalities forming the state of Pará already had notifications of COVID-19 cases.

The regional disease expansion and the high registration rates in the BMR have compromised the structure of the state's public and private healthcare systems due to the high demand for basic care services and the high need for more complex services involving hospitalizations and intubation of patients with aggravated cases.

In the Pará state, severe cases of COVID-19 and mortality records are related to several comorbidities, the most commons are associated with heart disease, diabetes, kidney disease, pneumonia, immunodeficiency, asthma, obesity, neurological disease, hematological disease and illness hepatic; the most frequent ones being associated with heart disease and diabetes (Fig. 4).

According to Chen et al. (2020), patients infected with COVID-19 tend to have associated comorbidities with one or more chronic diseases. In Iran, patients diagnosed with COVID-19 had a strong association with chronic diseases such as diabetes, chronic

219 respiratory diseases, hypertension, cardiovascular diseases, kidney diseases and cancer,
 220 these comorbidities were also observed in cases of deaths (Nikpouraghdam et al. 2020).
 221 Similar results were verified in infected people in Wuhan, China (Wu et al., 2020),
 222 corroborating with the results occurred in this study region.
 223



224
 225 **Fig. 4.** Common comorbidities in diagnosed cases of COVID-19 in the state of Pará,
 226 from March 18 to May 5, 2020.

227
 228 These factors associated with the precarious service capacity of hospitals and
 229 emergency care units (ECU), the insufficient health professionals staff, lack of rapid
 230 tests to identify infected patients, contributed to COVID-19 advance in the region.
 231 Associated with these problems, there is still an insufficient hospital beds number
 232 available according to the State Department of Public Health of Pará. There are only
 233 249 ICU beds available for adults care in the pandemic for a population of 7,581,051
 234 inhabitants, which represents a ratio of 1/30,445.98 bed/inhabitants, such fact leads the

system to collapse in a short period during a pandemic, contributing to the disease and the number of deaths progress. Collapsing is already experienced in pediatric clinic beds (Table 1).

Due to the risk of COVID-19 infected people promoting the disease advance through community transmission to more remote regions of the state, it is essential to understand the dynamics of disease new cases to enable decision-making regarding control, prevention, treatment of infected, identify groups of risks and enable decision-making on resources allocation and allow better planning on the health system in difficult times.

Table 1: Availability and occupation of exclusive hospital beds for COVID-19 in the public healthcare system in the state of Pará.

Hospital bed type	Total	Available	% Occupation
Pediatric	1109	497	55.2
Pediatric clinical	8	8	0.0
adult ICU	249	37	85.2
Pediatric ICU	7	4	42.9
Intermediate unit	26	25	3.9
Neonatal ICU	4	1	75.0

Source: Secretary of Public Health of Pará.

<https://portal.arquivos.saude.gov.br/images/pdf/2020/May/09/2020-05-06-BEE15-Boletim-do-COE.pdf>

Results show that a week after the first notified case, only 0.82% of the municipalities had infected people, in the second week of contagion they already had 5.56%, in the third 15.3%, in the fourth 24.3%, in the fifth 46.5%, in the sixth 69.4% and the seventh week after the first notified case, there were already 81.8% of the municipalities in the state of Pará with notified COVID-19 cases (Fig.7). The highest concentration of registered cases was in the Metropolitan Region of Belém, constituted

by the capital Belém, Ananindeua, Marituba, Benevides, Santa Bárbara do Pará, Santa Izabel do Pará, Castanhal.

The measure of containment by social isolation in the region did not have an expected effect on the curve of new cases for the period under study, mainly due to the low rate of population adherence. However, the lockdown instituted on May 5, 2020, gave positive percentage results in the short-term on new cases registration in the following week of decreed intervention, with a 10.07% reduction compared to the accumulated record in the week previous epidemiologic (Fig. 5). In the long-term, the reduction of the cases may be more significant, given the greater respect and adherence of the population to isolation policies.

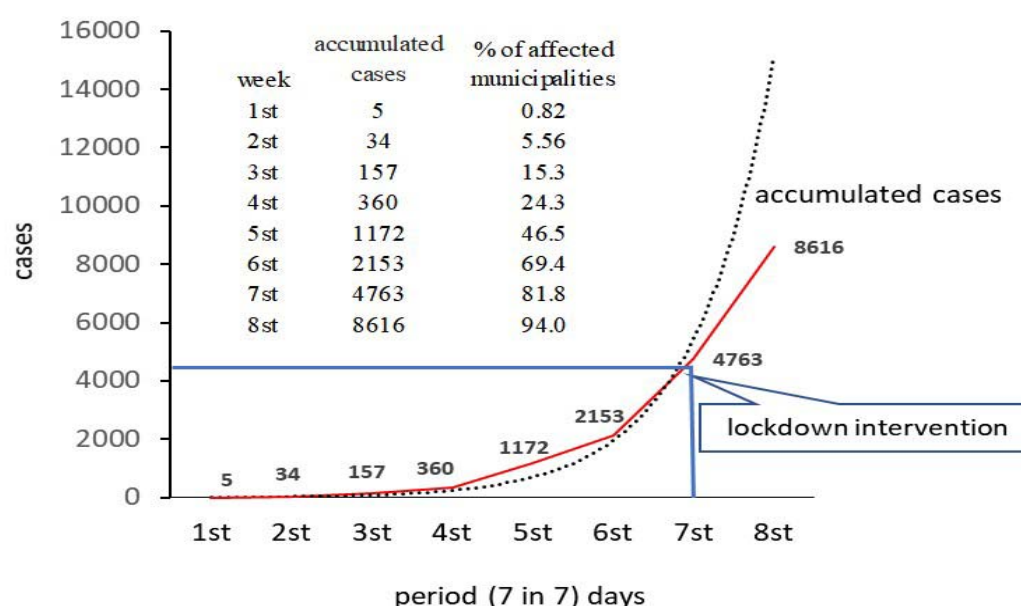


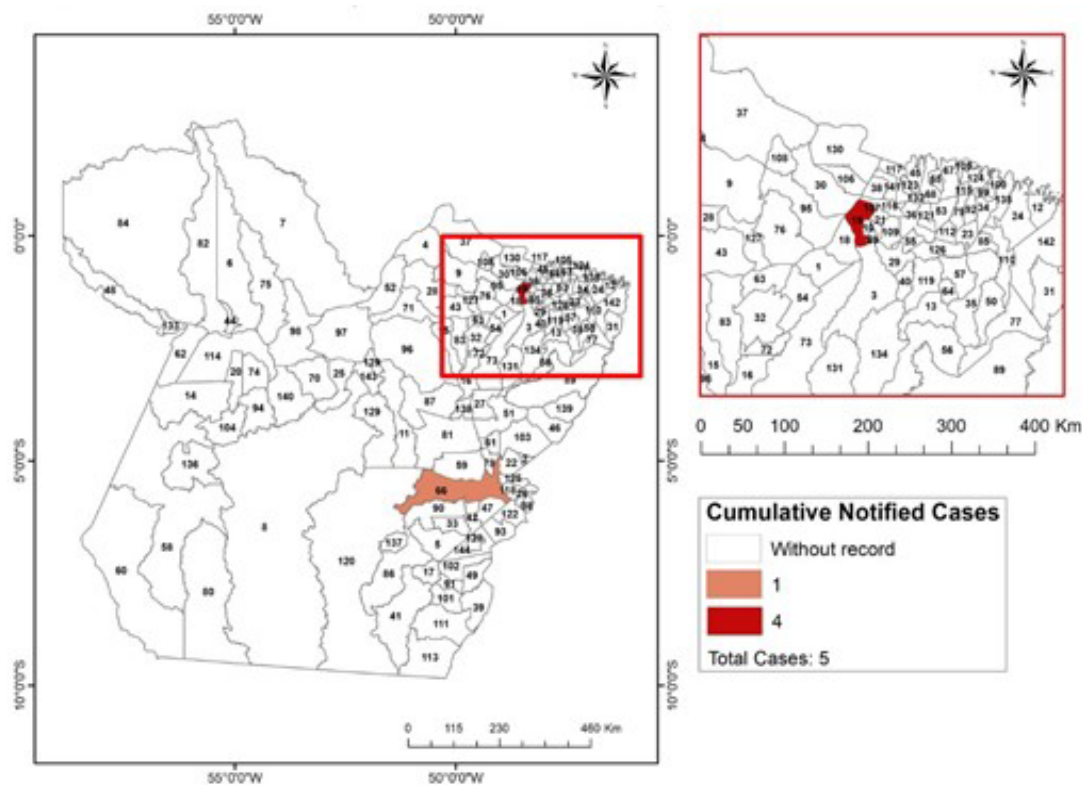
Fig. 5. Propagation of notified COVID-19 cases in the municipalities of the state of Pará, from March 18 to May 5, 2020, and the 1st post-lockdown period.

Efforts to prevent infected people from reaching more remote regions are important to stop disease transmission and prevent new cases (Coccia, 2020). To

271 understand the dynamics of COVID-19 cases advance to remote regions from the
272 capital, 7 maps were adjusted and show the weekly evolution of the accumulated cases
273 registered in the municipalities of the state (Figures 6 to 12).

274 The municipalities that registered cases of infection in the first week were Belém
275 (code 19) with 2 cases and Marabá (code 67) with 1 notified case (Fig. 6). The
276 municipalities that did not present COVID-19 case records in the seven weeks after the
277 first case were: Abel Figueiredo (code 2), Aveiro (code 14), Belterra (code 20), Brasil
278 Novo (code 25), Brejo Grande do Araguaia (code 26), Cachoeira do Arari (code 30),
279 Cumaru do Norte (code 41), Curionópolis (code 42), Eldorado dos Carajas (code 47),
280 Faro (code 48), Araguaia Forest (code 49), Gurupá (code 52), Jacareacanga (code 60),
281 Mojuí dos Campos (code 74), Piçarra (code 93), Plates (code 94), Rio Maria (code 102),
282 Rurópolis (code 104), Santa Luzia do Pará (code 112), Santa Maria das Barreiras (code
283 111), Santana do Araguaia (code 113) Francisco do Pará (code 121), Sapucaia (code
284 128), Soure (code 130), Trairão (code 136) and Vitória do Xingu (code 120) (Fig.12).

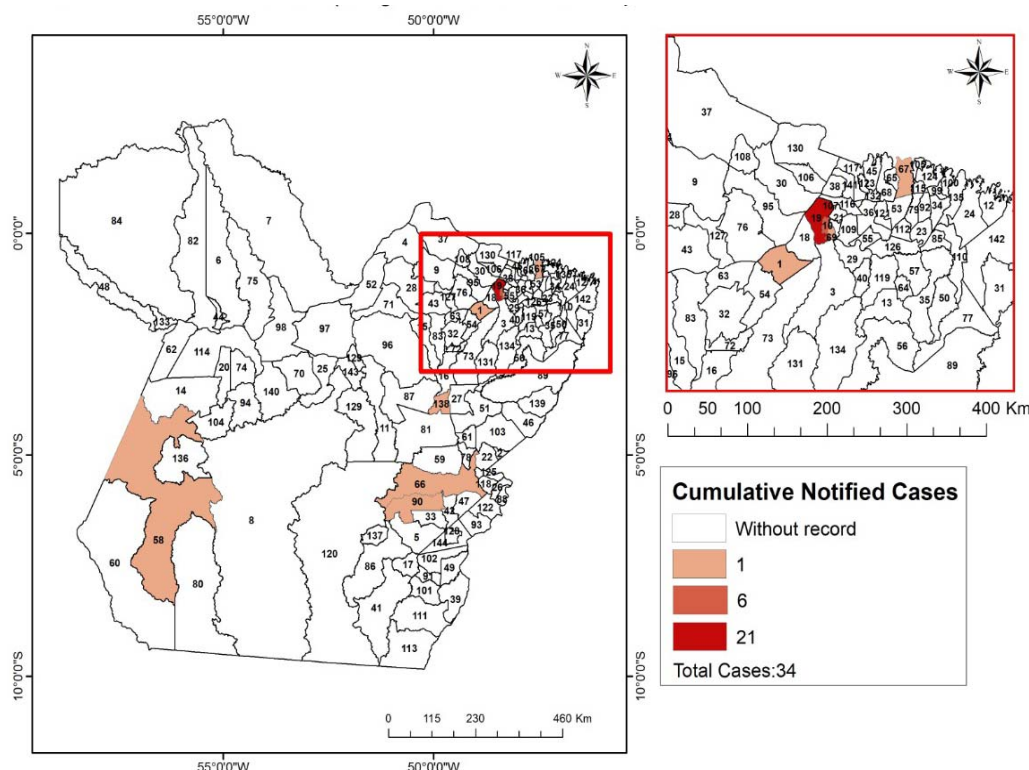
285



286

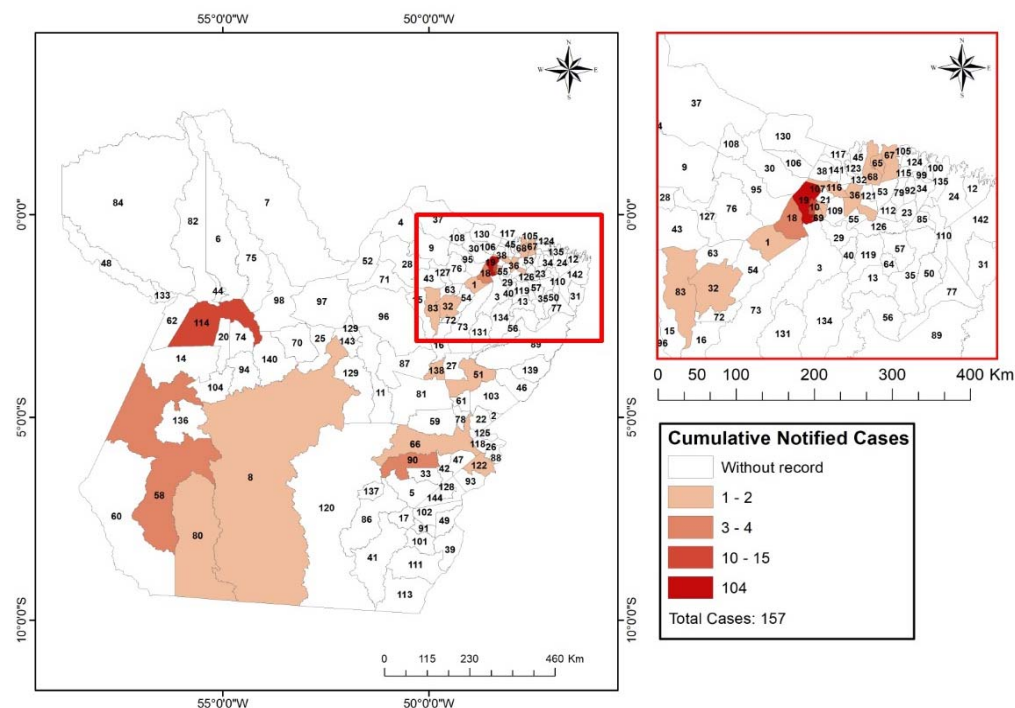
287 **Fig. 6.** Propagation of new cases of COVID-19 accumulated in the municipalities of the
 288 state of Pará in the **1st week** after registration of the first case in the region.

289



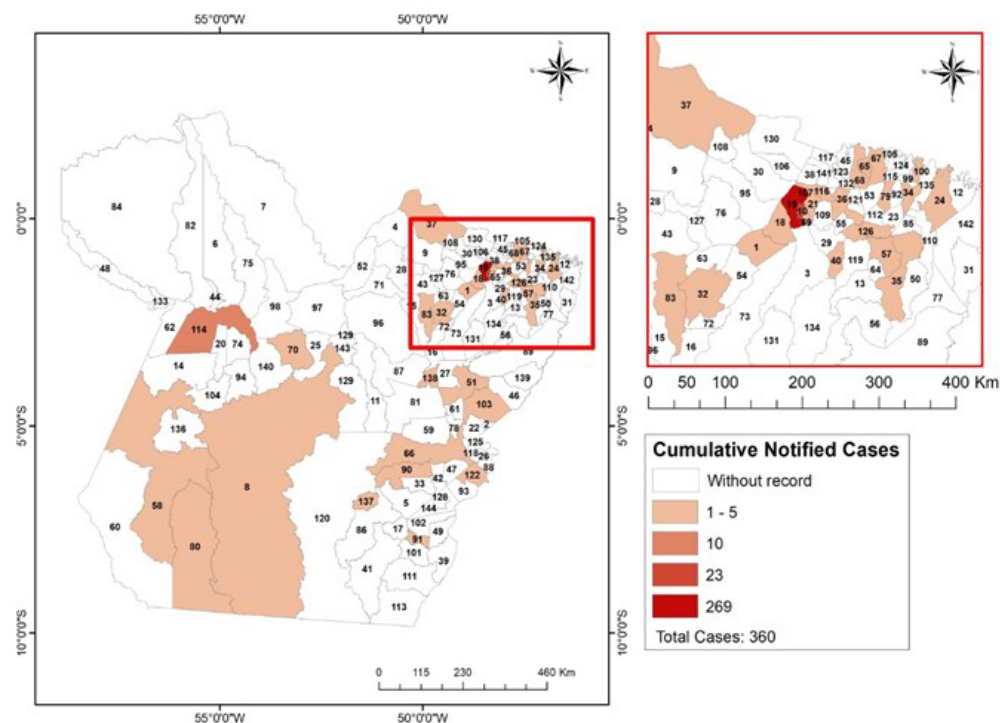
290

291 **Fig. 7.** Propagation of new cases of COVID-19 accumulated in the municipalities of the
292 state of Pará in the **2nd week** after registration of the first case in the region.



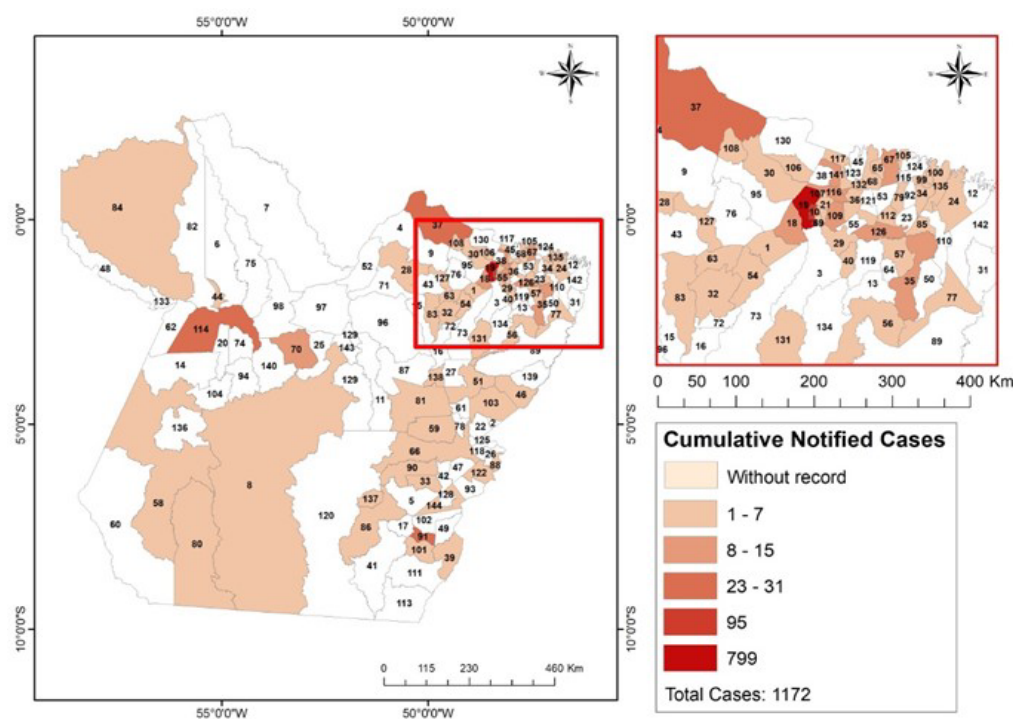
293

294 **Fig. 8.** Propagation of new cases of COVID-19 accumulated in the municipalities of the
295 state of Pará in the **3rd week** after registration of the first case in the region.



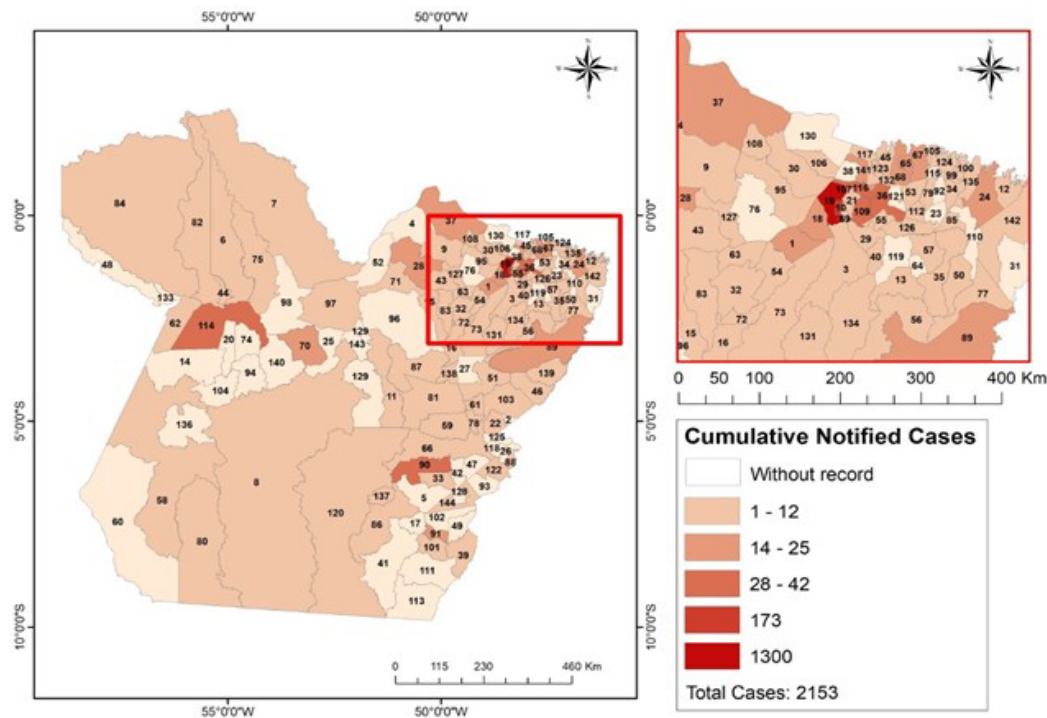
296

297 **Fig. 9.** Propagation of new cases of COVID-19 accumulated in the municipalities of the
 298 state of Pará in the 4th week after registration of the first case in the region.



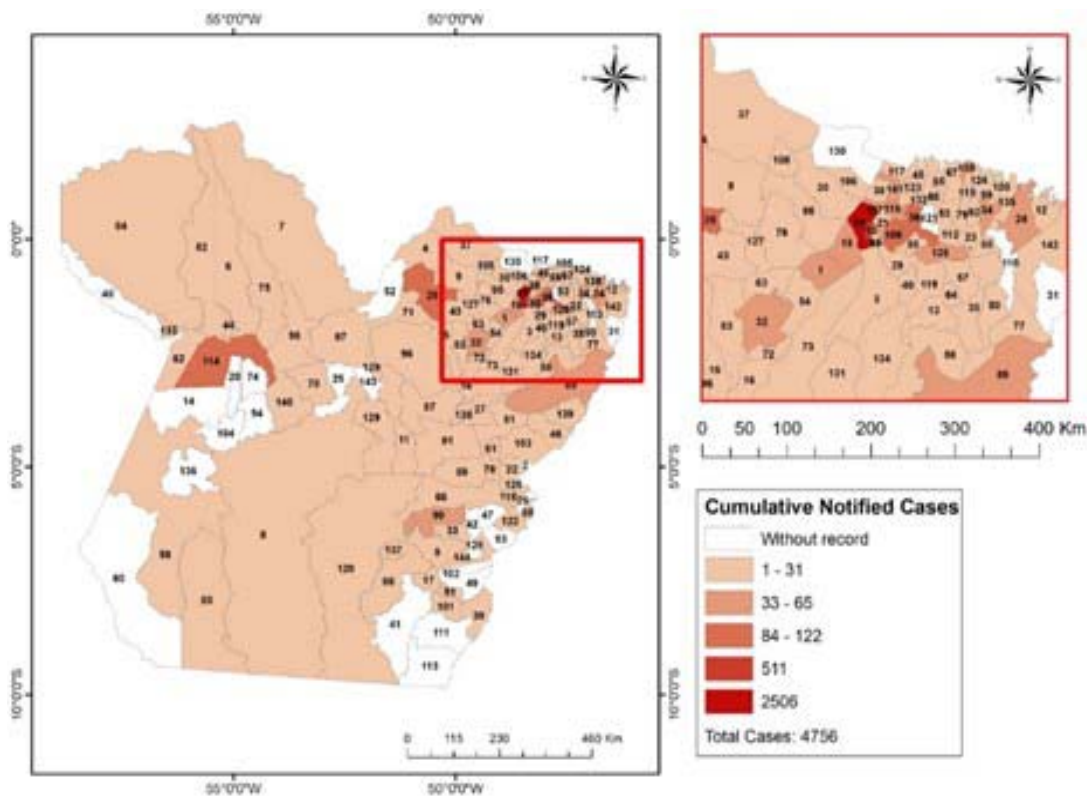
299

300 **Fig. 10.** Propagation of new cases of COVID-19 accumulated in the municipalities of
 301 the state of Pará in the 5th week after registration of the first case in the region.



302

303 **Fig. 11.** Propagation of new cases of COVID-19 accumulated in the municipalities of
 304 the state of Pará in the 6th week after registration of the first case in the region.



305

306 **Fig. 12.** Propagation of new cases of COVID-19 accumulated in the municipalities of
 307 the state of Pará in the 7th week after registration of the first case in the region.

308 4. Conclusions

309

310 Several factors can influence the spread of the virus and consequently influence
311 the rate of incidence and mortality. In this research, the incidence rate and mortalities in
312 Brazil and the North region were analyzed, as well as the monitoring of dynamics of the
313 COVID-19 progress for the municipalities of the state of Pará. The results indicated that
314 49 days were necessary to 81% out of 144 municipalities over an area of approximately
315 1,248,000 km² were affected by COVID-19 cases. Social isolation was not efficient to
316 contain new cases advance, due to low population adherence. The social isolation and
317 quarantine associated with the adoption of a strict measure of population circulation, the
318 “Lockdown”, and the mandatory use of masks in public environments were effective in
319 reducing new cases of COVID-19 registration in the short-term.

320

321 Conflicts of Interest Statement

322 The authors declare no conflicts of interest

323

324 Acknowledgments

325

326 This study was prepared with support from the Research Group for Biosystems
327 Management, Modeling and Experimentation - GEMABio.

328

329

330

331

332

333 **References**

334

335 Ahmadi, M., Sharifi, A., Dorosti, S., Ghouschi, S. J., Ghanbari, N. Investigation of
336 effective climatology parameters on COVID-19 outbreak in Iran. Science of The Total
337 Environment. 2020. v.729. DOI. <https://doi.org/10.1016/j.scitotenv.2020.138705>.

338

339 Brazil. Ministry of Health. Accumulated COVID-19 cases and deaths by confirmation
340 date. Available at: <https://covid.saude.gov.br/>. Access date: May 9 2020.

341

342 Coccia, M. Factors determining the diffusion of COVID-19 and suggested strategy to
343 prevent future accelerated viral infectivity similar to COVID, **Science of the Total**
344 **Environment**. 2020. <https://doi.org/10.1016/j.scitotenv.2020.138474>.

345

346 Mertz D., Kim T. H., Johnstone J., Lam P. P., Kuster S. P., Fadel S. A. et al.,
347 Populations at risk for severe or complicated influenza illness: systematic review and
348 meta-analysis, BMJ. 2013. DOI. <https://doi.org/10.1136/bmj.f5061>.

349

350 BIGS. Brazilian Institute of Geography and Statistics. Populations. Available at:
351 <https://cidades.ibge.gov.br/brasil/pa/panorama>. Date accessed: 10 May. 2020.

352

353 Jahangiri, M., Jahangiri, Milad., Najafgholipour, M. The sensitivity and specificity
354 analyses of ambient temperature and population size on the transmission rate of the
355 novel coronavirus (COVID-19) in different provinces of Iran. 2020. Science of The
356 Total. Environment. v.728, DOI. <https://doi.org/10.1016/j.scitotenv.2020.138872>.

357

358 Kucharski. A. J., Russell. T. W., Diamond. C., Liu. Y., Edmunds. J., Funk. S.,
359 et al. Early dynamics of transmission and control of COVID-19: a
360 mathematical modelling study. Lancet Infect Dis. 2020. DOI.
361 [https://doi.org/10.1016/S1473-3099\(20\)30144-4](https://doi.org/10.1016/S1473-3099(20)30144-4).
362
363 Le. N. K., Parikh. A. V., Brooks. J., Gardellini. J. P., Izurieta. T. R., 2020. Ecological
364 and health infrastructure factors affecting the transmission and mortality of COVID-19
365 BMC Infect. Dis. <https://doi.org/10.21203/rs.3.rs-19504/v1>.
366
367 Marson, F. A. L., Ortega. M. M. COVID-19 in. Brazil. Pneumology. 2020. DOI.
368 <https://doi.org/10.1016/j.pulmoe.2020.04.008>.
369
370 Nikpouraghdam et al. Epidemiological characteristics of coronavirus disease (COVID-
371 19) patients in IRAN: A single center study. 2020. Journal of Clinical Virology. 2019.
372 DOI. <https://doi.org/10.1016/j.jcv.2020.104378>.
373
374 SHSP. Secretary of Health of the State of Pará (SHSP). Coronavirus in Pará. Available
375 at: [https://portal.arquivos.saude.gov.br/images/pdf/2020/May/09/2020-05-06-BEE15-](https://portal.arquivos.saude.gov.br/images/pdf/2020/May/09/2020-05-06-BEE15-Boletim-do-COE.pdf)
376 [Boletim-do-COE.pdf](https://portal.arquivos.saude.gov.br/images/pdf/2020/May/09/2020-05-06-BEE15-Boletim-do-COE.pdf). Date accessed: 10 May. 2020.
377
378 Prata, D. N., Rodrigues W., Bermejo, P. H. Temperature significantly changes COVID-
379 19 transmission in (sub) tropical cities of Brazil. 2020. Science of the Total
380 Environment. v.729. 138862. DOI. <https://doi.org/10.1016/j.scitotenv.2020.138862>.
381

382 Saez, M., Tobias, A., Varga, D., Barceló, M. A. Effectiveness of the measures to
383 flatten the epidemic curve of COVID-19. The case of Spain. Science of the Total
384 Environment. 2020. v. 727. 138761. DOI.
385 <https://doi.org/10.1016/j.scitotenv.2020.138761>.
386
387 Şahin, M. Impact of weather on COVID-19 pandemic in Turkey. Science of the Total
388 Environment. 2020. v.720. DOI. <https://doi.org/10.1016/j.scitotenv.2020.138810>.
389
390 See. K. C., Liew, S.M., David C. E. N., et. al., COVID-19: Four Paediatric Cases in
391 Malaysia. 2020. International Journal of Infectious Diseases. v. 94, p. 125–127. DOI.
392 <https://doi.org/10.1016/j.ijid.2020.03.049>
393
394 Solé et al. Guidance for the care of neuromuscular patients during the COVID-19
395 pandemic outbreak from the French Rare Health Care for Neuromuscular Diseases
396 Network, Revue Neurologique. 2020. DOI.
397 <https://doi.org/10.1016/j.neurol.2020.04.004>.
398
399 Waldecy. R., David. N. P., Wainesten. C. Regional determinants of the expansion of
400 covid-19 in Brazil. 2020, MedRxiv. doi: <https://doi.org/10.1101/2020.04.13.20063925>
401
402 Yang, Y., Peng, F., Wang, R., Guan, K., Jiang, T., Xu, G., Sun, J., Chang, C. The
403 deadly coronaviruses: The 2003 SARS pandemic and the 2020 novel coronavirus
404 epidemic in China. 2020. J. Autoimmun. 102434.
405 <https://doi.org/10.1016/j.jaut.2020.102434>
406

407 Wu Y., Jing W., Liu J., Ma Q., Yuan J., Wang Y., Du M., Liu M. Effects of temperature
 408 and humidity on the daily new cases and new deaths of COVID-19 in 166 countries.
 409 2020. Science of the Total Environment. v.729. 139051. DOI:
 410 <https://doi.org/10.1016/j.scitotenv.2020.139051>.
 411
 412 Zhu Y., Xie J., 2020. Association between ambient temperature and COVID-19
 413 infection in 122 cities from China. 2020. Sci. Total Environ. 138201. DOI.
 414 <https://doi.org/10.1016/j.scitotenv.2020.138201>.
 415
 416