

A Case-Control study identifying highly tuberculosis-exposed, HIV-1-infected but persistently TB, tuberculin and IGRA negative persons with *M. tuberculosis* specific antibodies in Cape Town, South Africa

Elouise E. Kroon^{1*}, Craig J. Kinnear¹, Marianna Orlova^{2,3,4}, Stephanie Fischinger^{8,9}, Sally Shin⁸, Sihaam Boolay¹, Gerhard Walzl¹, Ashley Jacobs⁵, Robert J. Wilkinson^{5,6,7}, Galit Alter⁸, Erwin Schurr^{2,3,4}, Eileen G. Hoal¹ and Marlo Möller^{1*}

¹ DSI-NRF Centre of Excellence for Biomedical Tuberculosis Research; South African Medical Research Council Centre for Tuberculosis Research; Division of Molecular Biology and Human Genetics, Faculty of Medicine and Health Sciences, Stellenbosch University, Cape Town, South Africa.

² Program in Infectious Diseases and Immunity in Global Health, The Research Institute of the McGill University Health Centre, 1001 boul Décarie, Site Glen Block E, Room EM3.3210, Montréal, QC H4A3J1, Canada

³ McGill International TB Centre, McGill University, Montréal, QC, Canada

⁴ Departments of Medicine and Human Genetics, McGill University, Montréal, QC, Canada

⁵ Wellcome Centre for Infectious Diseases Research in Africa, Institute of Infectious Disease and Molecular Medicine, University of Cape Town, Observatory 7925, South Africa

⁶ Department of Infectious Diseases, Imperial College London, W12 ONN, United Kingdom

⁷ The Francis Crick Institute, London, NW1 1AT, United Kingdom

⁸ Ragon Institute of MGH, MIT and Harvard, Boston, MA, USA

⁹ University of Duisburg-Essen, Institute for HIV research, Essen, Germany

* Correspondence: M. Möller, DSI-NRF Centre of Excellence for Biomedical Tuberculosis Research; South African Medical Research Council Centre for Tuberculosis Research; Division of Molecular Biology and Human Genetics, Faculty of Medicine and Health Sciences, Stellenbosch University, Cape Town, South Africa. (marlom@sun.ac.za).

Abstract

Background:

Mycobacterium tuberculosis (*Mtb*) infection is inferred from positive results of T-cell immune conversion assays measuring *Mtb*-specific interferon gamma production or tuberculin skin test (TST) reactivity. Certain exposed individuals, termed resisters or early clearers, do not display T-cell immune conversion in these assays. Here we report a hitherto unknown extreme form of this phenotype: HIV-1-infected persistently TB, tuberculin and IGRA negative (HITTIN).

Methods:

A community-based case-control design was used to systematically screen and identify HIV-1-infected persons (aged 35-60 years) who met stringent study criteria, and follow up for repeat IGRA and TST testing. Participants had no history of TB despite living in TB hyper-endemic environments in Cape Town, South Africa with a provincial incidence of 681/100,000. *Mtb*-specific antibodies were measured using ELISA and Luminex.

Findings:

We identified 48/286(17%) individuals who tested persistently negative for *Mtb*-specific T-cell immunoreactivity (three negative Quantiferon results and one TST = 0mm) over 206 ± 154 days on average. Of these, 97.2% had documented CD4 counts <200 prior to antiretroviral therapy (ART). They had received ART for 7.0 ± 3.0 years with a latest CD4 count of 505.8 ± 191.4 cells/mm³. All HITTIN sent for further antibody testing (n=38) displayed *Mtb*-specific antibody titres.

Interpretation:

Immune reconstituted HIV-infected persons can be persistently non-immunoreactive to *Mtb*, yet develop species-specific antibody responses. Exposure is evidenced by *Mtb*-specific antibody titers. Identifying individuals displaying such extreme resistance to T-cell immune conversion indicates the importance of early events of TB pathophysiology in the context of HIV-infection that so far have received only scant attention.

Funding:

Funding provided by National Institutes of Health [1R01AI124349-01].

Keywords: resister, early clearance, interferon gamma release assay, tuberculin skin test, antibodies

Introduction

Classically, tuberculosis (TB) pathogenesis is broadly divided into what is termed latent TB infection (LTBI) and active TB, with only a small proportion of LTBI persons likely to advance to disease. *Mycobacterium tuberculosis* (*Mtb*) infection in the absence of clinical symptoms is inferred from T-cell based assays such as a positive tuberculin skin test (TST) or interferon gamma release assay (IGRA). Recently, increased attention has been given to the first step of TB pathogenesis, namely infection as measured by T-cell immune conversion.[1] Persons who remain LTBI-negative, i.e. who do not convert their negative IGRA or TST status, despite known high *Mtb* exposure are generally considered to be also resistant to TB. These persons have been termed either “resisters” or “early clearers” [2–5] and several immune and genetic factors have been identified that contribute to this phenotype.[6–10]. Simmons et al proposed baseline criteria to define the resister phenotype. These criteria include the requirement that individuals should have demonstrable prolonged and intense exposure to *Mtb*. In addition, resisters should have persistently negative results in IGRA and TST assays with no history of active TB.[1] This case definition for the resister phenotype was not reached by consensus methodology and more studies are needed to fully describe this phenotype.[11] Recently other studies investigating *Mtb* infection resistance have identified the presence of *Mtb*-specific antibodies in their defined ‘resister’ groups [12]. This indicates previous *Mtb* exposure and infection which was cleared, given the negative IGRA and TST status. Further research is essential to understand these emerging and unique innate and adaptive immune profiles, as well as to correctly define the resistance phenotype as resistance to immune conversion and not infection per se.

The study of resistance to immune conversion is of particular importance in the context of people living with HIV infection in areas of high *Mtb* transmission such as sub-Saharan Africa where nearly 80% of all people suffering from HIV-associated TB reside. People living with HIV are at increased risk of TB disease and molecular epidemiological studies show that HIV-associated TB is usually the result of recent infection and rapid progression to disease, and not reactivation of latent infection.[13–15] The Western Cape, Republic of South Africa (RSA), has one of the highest TB incidences worldwide, and studies have shown that *Mtb* transmission occurs mainly in the community as opposed to the household.[16] In addition, the prevalence of HIV infection is estimated at 12.6% of the general population leading to a substantial number of HIV and *Mtb* co-infections.[17] By employing a community-based retrospective design our objective was to identify a group of HIV-1-infected persons who had undergone a period of very low CD4+ T-cell counts and displayed persistent TST and IGRA negativity in absence of any TB history. We define these persons as HIV-1-infected persistently TB, tuberculin and IGRA negative (HITTIN). We estimated the frequency of the HITTIN phenotype to be approximately 14% of the enrolled group of HIV-1-infected persons (48/333). Our results demonstrated a distinct phenotype that can be expressed by HIV-1-infected persons even after they underwent a period of very low CD4+ counts. Despite no evidence of T-cell sensitisation, the majority of the HITTIN phenotype unexpectedly displayed specific *Mtb* antibody titers proving exposure to *Mtb*.

Methods

Study setting

The Western Cape province of South Africa has a very high *Mtb* transmission with an annual rate of TST conversion estimated at 7.9% among young adolescents.[18] In the age range 31–35 years, 80–90% of the population display TST reactions ≥ 10 mm consistent with reported community prevalences of 69–80%.[18,19] Using age (35–60 years old) as a surrogate for exposure frequency we screened older persons in a high TB incidence environment to identify our phenotype of interest. In 2018, the TB incidence in South Africa was 520 per 100,000 across all age groups [20] and the latest available TB incidence (2015) in the Western Cape was 681 per 100,000 across all age groups.[21] The HIV prevalence in the Western Cape is 12.6%.[22] Among HIV-infected persons the cumulative TB risk is greatly increased during periods of low CD4 counts both before and during antiretroviral therapy (ART).[23–25] For ART naïve HIV-infected persons with CD4 counts <100 cells/mm³ TB incidence in the recent past reached as high as 30 cases/100 person-years.[23–25]

Identification of population of interest in pilot study

In the enrolment area, HIV-infected patients visit community healthcare clinics (CHCs) every two to six months to access ART. Ten CHCs were included in the study. In a pilot study, records of HIV-infected persons enrolled in ART adherence clubs were pre-screened. Adherence club membership is restricted to patients who have been on ART for at least 1 year with undetectable viral loads and are otherwise healthy. A pilot study showed that 29% of club members (136/472) fulfilled the CD4 count criteria for potential enrolment in the main study (see Supplementary Material). Criteria for enrollment were age of 35 to 60 years, HIV-infected, living in an area of high

transmission of *Mtb*, history of living with a low CD4+ count (either with two CD4+ <350 cells/mm³ counts at least 6 months apart or a single CD4+ count <200 cells/mm³) prior to initiating ART, and immune reconstitution on ART for at least one year at time of enrolment with the last CD4+ count >200 cells/mm³.

Study design

We based the main study on preliminary data gathered in the pilot study. The main study was executed in 2 parts (Figure 1). Part one was a case-control study that recruited participants based on the recruitment criteria established in the pilot study. Cases were defined as subjects with no previous TB (Arm 1). Only subjects with a history of bacteriologically confirmed TB during ART that had been cured for at least 3 years were included in the control group Arm 2 (Previous TB). All Arm 1 participants had an IGRA using QuantiFERON®-TB Gold Plus (QFT®-Plus) in tube test to determine further classification for Part two. Part two of the study was a case-control nested in a cohort study. This part of the study focused on the no previous TB participants (Arm 1). Individuals were selected based on their Arm 1 IGRA results and grouped into either IGRA negative or positive. The IGRA negative group was followed-up for a second IGRA and TST administration. Three days after the TST administration the IGRA was repeated for a third time. This was to check for boosting as a result of the TST. Those subjects that had a TST = 0mm and a third negative IGRA were designated HITIN. In summary, HITIN are HIV-1-infected persons who had experienced a period of very low CD4 counts, who had no symptoms or history of previous TB, had three consecutive negative IGRA readings, and a TST = 0mm (Figure 1). The IGRA positive group was also followed-up for a second IGRA and TST administration. This group did not receive a third IGRA. As part of the case-control design we also defined a group of HIV-1-infected persons who tested IGRA positive in two consecutive tests (IGRA double+) and displayed a TST ≥ 5mm (Supplementary Figure 1). We refer to these participants as HIV-1-infected IGRA positive tuberculin positive (HIT).

Immune assays

The methods and methods of statistical analysis of IGRA, TST and *Mtb* antibody detection via ELISA and Luminex are given in the Supplementary Material.

Results

A schematic overview of enrolment is shown in Figure 1. A detailed description is provided in the Supplementary Material. A total of 333/340 subjects who fulfilled enrolment criteria agreed to take part in the study. In total 286 participants were enrolled with no previous TB (Arm 1) and 47 participants with previous TB (Arm 2). In part 2 of the study 76 IGRA negative and 50 IGRA positive of the previously enrolled Arm 1 participants were followed-up for repeat IGRA and TST testing. We identified 48 HITIN and 35 HIT participants.

Demographic and clinical features of the study participants are listed in Table 1. Age and sex were not significantly different between the HITIN, HIT, and participants who had previous TB. HITIN were 85.4% female, with an average age of 43.3±5.6 years. The HIT group was 85.7% female with an average age of 42.9±5.6 years, and participants who had previous TB were 70.2% female and had an average age of 40.7±8.2 years. HITIN were diagnosed with HIV on average 8.0±3.0 years before enrolment. This differed slightly but significantly from the HIT group (p=0.01) who were diagnosed with HIV on average 10.0±3.8 years before enrolment and from the previous TB group (diagnosed 9.4±3.1 years before enrolment, p=0.02). There was also a significant difference (p=0.04) between time spent on ART before enrolment in that HITIN were on ART for a slightly shorter time (7.0±3.0 years), compared to the HIT group (8.0±3.0 years) and previous TB group (8.0±2.2 years on ART). There was however no significant difference between time from HIV-1 diagnosis to ART initiation between HITIN (1.0±2.0) and the HIT group (2.0±3.0, p=0.09), nor between HITIN and the previous TB group (1.0±2.0, p=0.33). HITIN (79.2%) were not more likely to have received Isoniazid preventive therapy (IPT) compared to the HIT group (91.4%) (p=0.22). There were no other significant epidemiological or demographic factors that differed between the HIT and the HITIN group. HITIN had significantly higher BMI levels (28.2±6.2) compared to participants with previous TB (25.6±5.9, p=0.04), but not compared with the HIT group (29.2±5.9, p=0.46). The average time between the first and second IGRA for HITIN was 203±151 days and for the HIT group 292±70 days (p=0.002).

To determine if HITIN had prior contact with *Mtb*, serum IgG titers were measured by ELISA against *Mtb*-specific antigens ESAT-6 and CFP-10 (Figure 2). In the subset of HITIN tested, approximately 74% (14/19) had evidence of antibody responses to ESAT-6/CFP-10. Absence of IgG recognition of ESAT-6/CFP-10 does not necessarily infer lack of prior infection with *Mtb*, as not all HIV-1-infected controls with microbiologically confirmed active TB (~90%) had antibodies against ESAT-6/CFP-10. This is in keeping with prior literature on heterogeneity in the

human antibody response against *Mtb*. [26] Nevertheless, these findings suggested the majority of HITIN have in fact been exposed to and infected with *Mtb*.

To further decipher the differences between HITIN and HIT across various TB-associated antigens and isotypes beyond general *Mtb* exposure, a customized Luminex assay was performed (Figure 3A). The analysis included the samples used in the initial ELISA. The Luminex data replicated and expanded upon the ESAT-6/CFP-10 ELISA data and similar levels of IgG, IgA1 and IgM for ESAT6/CFP10, PPD and LAM between HITIN and HIT were observed. While there were no significant differences between the two groups, there was a broad spectrum of responses, especially for IgG and IgA2 for ESAT-6/CFP-10 and PPD and IgM LAM within the groups. This indicated a heterogenic response across individuals in the absence of association with the HITIN phenotype, suggesting that both groups were indeed exposed and potentially infected.

To further investigate the overall antibody profile of the two groups in a more comprehensive way, a supervised multivariate analysis was applied. Therefore, a partial least-square discriminant analysis (PLSDA) using a least absolute shrinkage and selection operator (LASSO) was performed. The PLSDA loadings plot (Figure 3C) showed the selected minimal features accounting for the maximal variance in the data set, the colors correspond to enrichment in groups (blue, features enriched HIT group; green variables enriched in HITIN). However, little separation can be observed in the PLSDA scoring plot (Figure 3B), indicating that the antibody profiles between HITIN and HIT are similar and the groups cannot be separated based on their antibody features.

Discussion

We present the description of a highly robust phenotype in HIV-1-infected persons living in a high transmission environment, without a history of TB and who test persistently negative to IGRA and tuberculin. There is considerable epidemiological and genetic evidence that supports the existence of a resister phenotype. [1] Stein et al previously reported a similar phenotype observed in household contacts of TB cases in Uganda. Immunocompetent household contacts identified as resisters during 2002-2012 were recontacted and the majority (median age 22.9 years) remained persistently IGRA and TST negative. [5] Resisters have also been identified in mines in South Africa where TB incidence is exceptionally high [8], as well as in India and Indonesia. [3,27]. Our study determined the existence and refined the description of this phenotype for HIV-1-infected persons. We identified a stringently defined and extreme phenotype within a highly TB susceptible HIV-1-infected population in the Western Cape, where *Mtb* infection is endemic in the community. [16] We targeted individuals with a prolonged and persistent *Mtb* infection exposure using age as a surrogate for exposure frequency. Given that a substantial proportion of subjects enrolled in our study display the HITIN phenotype (48/286) highlights the importance of the phenotype for TB control and a proper understanding of the flow of *Mtb* through exposed populations.

A unique aspect of our study was the enrolment of HIV infected persons who had undergone a period of low CD4 counts. There is ample epidemiological evidence that risk of TB increases greatly for such patients. The HITIN cases defined in our study show a unique and durable phenotype that may be independent of classical IFN- γ cell mediated immune responses. They remained free of TB disease and tested TST and IGRA negative many years (8.0 ± 3.0) after HIV diagnosis. Importantly, even HIV infected persons receiving ART such as our participants, and therefore considered immune reconstituted, still have at least double the risk of acquiring active TB compared to the general population. [28]

Immune reconstitution was key since we based the HITIN phenotype on immune assays which are dependent on functioning T-cells. The ability of ART reconstituted CD4 T-cells to produce IFN- γ in response to ESAT-6/CFP-10 remains the same or improves with time on ART, although this is not always fully restored to the same extent as in HIV uninfected persons. [29–32] Although the ART duration in HITIN was shorter than that of HIT and previous TB groups, it has been determined that the functional potential of *Mtb*-antigen specific T-cells can significantly change after only three months on ART. [30] Most studies considered the effect of ART over only a few weeks, but HITIN identified in this study have been on ART an average of 7 years and are highly likely to have improved IFN- γ CD4 T-cell responses. It is therefore unlikely that the negative results in IGRA and TST reported here are due to a lack of host ability to produce IFN- γ . The HITIN phenotype is therefore of high relevance and importance for control of TB in HIV-infected persons.

In the study area, TST responses of ≥ 10 mm are considered indicative of immune conversion and infection. Multiple studies have shown that TST readings of ≥ 10 mm have very low reversion rates ($<10\%$). Given that such TST

responses are very stable, it is highly unlikely that our negative TST measurements =0 mm reflected previous positive readings which reverted but were most likely persistently negative including during the period of low CD4+ T-cell counts.[33–36] Nevertheless, negative TST or IGRA results could be the result of a lack of sufficient exposure despite being in a high incidence environment. This seemed unlikely, since studies have shown that *Mtb* transmission occurs very frequently within this community.[19] More definite, however, the presence of IgG ESAT-6/CFP-10 antibodies in our study indicated previous exposure to *Mtb* of these individuals as previous vaccination with BCG would not have accounted for the presence of these antibodies.[37] Furthermore, the similarity in antibody levels across HIT and HITIN individuals was confirmed across different antigens, including PPD, ESAT-6/CFP-10 and LAM and upon different antibody isotypes. The ESAT-6/CFP-10 results were cross-validated by two assays. The existence of class-switched IgG and IgA antibodies suggested IFN- γ -independent CD4 T-cell help despite negative IGRA and TST testing, supporting the claim of *Mtb* exposure in resisters.[12] The lack of separation between HIT and HITIN in the PLSDA (Figure 3B and C) confirmed the similar antibody profiles observed in these groups in HIV-1-infected persons, concurrent with previous findings in an HIV-uninfected cohort in Uganda.[12] The presence of specific *Mtb*-antibodies suggests that HITIN cases are at least transiently infected with *Mtb* and display resistance to *Mtb*-specific IFN- γ production and TST reactivity. Further immunological studies are needed to determine the relevance of antibodies for the HITIN phenotype, and how this relates to IFN- γ independent T-cell mechanisms of innate and adaptive infection clearance.

Limitations

Our study is enriched for female (214/268 Arm 1 and 27/39 Arm 2) compared to male participants and 41/48 (85.4%) of the identified resisters are female. In South Africa the HIV prevalence is higher in woman (20.6%), compared to men (14.8%).[17] In addition to this men are also less likely to attend clinics and be tested for HIV and typically have lower ART coverage.[38,39]

Previous TB was not excluded based on CXR. Studies show that both questionnaires and CXRs have low negative predictive values to identify previous TB [40]. Medical folders were screened and evaluated for each enrolled patient. Future studies include BALs for a subset of the identified HITIN group, as well as TB GeneXpert testing and CXR.

Even though HITIN cases were diagnosed with HIV for a shorter time than HIT controls and previous TB participants before enrolment, one cannot infer that this implies that they were infected with HIV for a significantly shorter time, as time from HIV infection is impossible to determine. Importantly, there was no significant difference between time since HIV diagnosis and initiation of ART. There were no other significant differences between HITIN and the HIT control group.

The 48 identified HITIN (17%) is likely an underestimate based on the likelihood of false positives identified due to characteristics of the assay. The likely 6 false positive participants had initially negative IGRA results (see supplementary figure 1 and 2). On retesting and just prior to TST administration, these results converted to positive and three days later, they reverted to negative with TST = 0mm. This is most likely a false positive IGRA result on the second visit. If we assume a similar misclassification rate at the first enrolment IGRA test, the count of HITIN might have increased considerably. We also did not include participants who had three consecutive negative IGRA results with TST readings of 1mm. This is a minimal reaction, if any, and should these participants be included in addition to the false positives, there were a potential 56/286 (20%) HITIN. In either case we think that 17% HITIN is a low end estimate further emphasizing the importance of this phenotype in *Mtb* transmission.

Conclusion

This is the first description of HIV-1-infected persons who remain free of TB and test persistently negative by IGRA and TST. We identified a unique group of individuals from HIV clinics, in Cape Town, a high TB incidence environment. Despite having experienced very low CD4 counts and high exposure to *Mtb*, confirmed by the presence of antibodies, these HITIN remained persistently IGRA and TST negative and did not develop TB. Establishing that nearly 20% of people who are living with HIV and made it through a period of a low CD4 count without TB prior to ART, were immune-reconstituted and subsequently lived in an environment of high *Mtb* exposure, display this phenotype is an important finding that identifies HITIN as critical research focus for prevention of TB in HIV-infected persons.

Acknowledgments

We would like to acknowledge and thank the following individuals for their contribution to the ResisTB study: Johannes Taljaard, Mark Cotton, Hans Prozesky, Marije van Schalkwyk, Jean Nachega, Stefanus Malherbe, Elizna Maasdorp, Gian van der Spuy, Liani Smit, Anna Coussens, Allison Seeger, Molebogeng Rangaka, Grant Theron, Suventha Moodley, Nosipho Mtala, Siyabulela Justice Mboniswa, Janice Theys, Glenda Durrheim, Naomi Okugbeni and Vuyiswa Ndunana.

The study was approved by the Health Research Ethics Committee (HREC) of Stellenbosch University [N16/03/033 and N16/03/033A] and the Faculty of Health Sciences Human Research Ethics Committee of the University of Cape Town [HREC 755/2016 and 702/2017]. Additional approval was obtained from the City of Cape Town and Western Cape government for access to the relevant clinics.

The work herein was made possible through funding by the South African Medical Research Council through its Division of Research Capacity Development under the SAMRC Clinician Researcher M.D PhD Development programme. The content of any Publications from any studies during this Degree are solely the responsibility of the authors and do not necessarily represent the official views of the South African Medical Research Council. This publication is supported by NeutroTB which is part of the EDCTP2 programme supported by the European Union (grant number TMA2018CDF-2353-NeutroTB). The views and opinions of authors expressed herein do not necessarily state or reflect those of EDCTP.

Funding

This work was supported by the National Institutes of Health [1R01AI124349-01]. This research was partially funded by the South African government through the South African Medical Research Council (SAMRC) and supported by the National Research Foundation of South Africa. The content is solely the responsibility of the authors and does not necessarily represent the official views of the SAMRC. ES is supported by a Foundation grant from the Canadian Institutes of Health Research [FDN-143332]. RJW receives funding from the Francis Crick Institute, which is supported by United Kingdom Research and Innovation [FC0010218], Cancer Research UK [FC0010218], and Wellcome [FC0010218]. RJW is also supported by Wellcome [104803, 203135] and the National Institutes of Health [U19AI111276]. EEK is supported through funding by the SAMRC through its Division of Research Capacity Development under the Clinician Researcher Development PHD Scholarship Programme. EEK is also supported by a Career Development Fellowship [TMA2018CDF-2353-NeutroTB] awarded by The European and Developing Countries Clinical Trials Partnership.

Declaration of Interests

Dr. Hoal reports grants from National Institutes of Health, during the conduct of the study. Dr. Moller reports grants from National Research Foundation, South Africa, during the conduct of the study. Dr. Schurr and Dr. Orlova reports grants from NIH, grants from CIHR, during the conduct of the study. Dr. Kroon reports grants from National Institutes of Health, other from European and Developing Countries Clinical Trials Partnership, other from South African Medical Research Council, during the conduct of the study. Dr. Alter reports other from Seromix Systems Inc, outside the submitted work. Dr. Wilkinson reports grants from Wellcome, grants from National Institutes of Health, grants from European and Developing Countries Clinical Trials Partnership, grants from Foundation for the National Institutes of Health, grants from Cancer Research UK, grants from UK Research and Innovation, during the conduct of the study. Dr. Walzl reports other from Vakzien Projekt Managment and Serum Institute of India, outside the submitted work.

Author Contributions

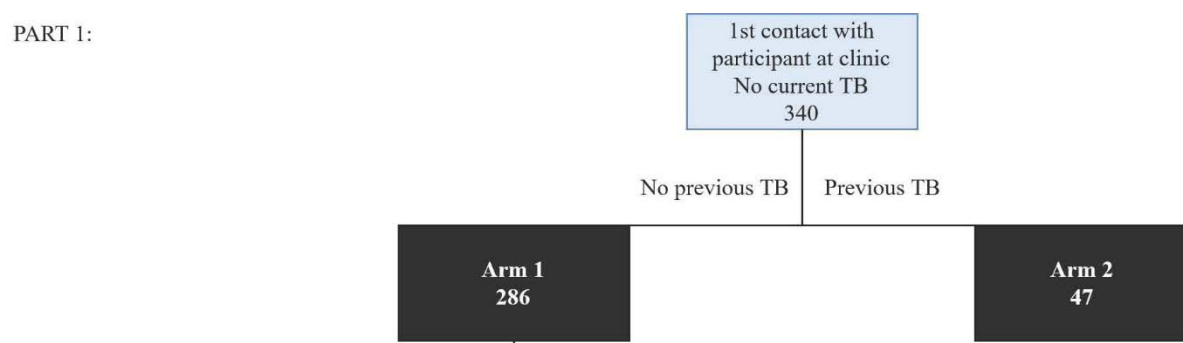
ES, EH, MM, CK, RJW, MO, GW and EEK conceptualised the study and the phenotype. SB, MM and EEK designed the database. EEK and MM were involved with participant recruitment and enrolment. ES, MM, EH, SB, CK, and EEK coordinated the project and SB, MM, CK and EEK were also involved with project administration. SB established the laboratory, procured laboratory equipment in Cape Town, South Africa and MO in Montreal, Canada. SB processed and analysed IGRA samples. AJ, SF, SS and GA did the antibody work and data analysis. EEK, ES, MM, AJ and SF drafted the manuscript and all co-authors reviewed and edited the final manuscript. All authors approved the final manuscript as submitted and agree to be accountable for all aspects of the work.

References

- [1] Simmons JD, Stein CM, Seshadri C, Campo M, Alter G, Fortune S, *et al.* Immunological mechanisms of human resistance to persistent *Mycobacterium tuberculosis* infection. *Nat Rev Immunol* 2018;18(9):575–589. <https://doi.org/10.1038/s41577-018-0025-3>.
- [2] Verrall AJ, Netea MG, Alisjahbana B, Hill PC, van Crevel R. Early clearance of *Mycobacterium tuberculosis*: a new frontier in prevention. *Immunology* 2014;141:506–513. <https://doi.org/10.1111/imm.12223>.
- [3] Verrall AJ, Schneider M, Alisjahbana B, Apriani L, van Laarhoven A, Koeken VACM, *et al.* Early clearance of *Mycobacterium tuberculosis* is associated with increased innate immune responses. *J Infect Dis* 2020;221(8):1342–1350. <https://doi.org/10.1093/infdis/jiz147>.
- [4] Stein CM, Zalwango S, Malone LL, Thiel B, Mupere E, Nsereko M, *et al.* Resistance and Susceptibility to *Mycobacterium tuberculosis* Infection and Disease in Tuberculosis Households in Kampala, Uganda. *Am J Epidemiol* 2018;187:1477–1489. <https://doi.org/10.1093/aje/kwx380>.
- [5] Stein CM, Nsereko M, Malone LL, Okware B, Kisingo H, Nalukwago S, *et al.* Long-term stability of resistance to latent *M. tuberculosis* infection in highly exposed TB household contacts in Kampala, Uganda. *Clin Infect Dis* 2018; 68(10): 1705–1712. <https://doi.org/10.1093/cid/ciy751>.
- [6] Cobat A, Gallant CJ, Simkin L, Black GF, Stanley K, Hughes J, *et al.* Two loci control tuberculin skin test reactivity in an area hyperendemic for tuberculosis. *J Exp Med* 2009;206:2583–2591. <https://doi.org/10.1084/jem.20090892>.
- [7] Cobat A, Gallant CJ, Simkin L, Black GF, Stanley K, Hughes J, *et al.* High Heritability of Antimycobacterial Immunity in an Area of Hyperendemicity for Tuberculosis Disease. *J Infect Dis* 2010;201:15–19. <https://doi.org/10.1086/648611>.
- [8] Hanifa Y, Grant AD, Lewis J, Corbett EL, Fielding K, Churchyard G. Prevalence of latent tuberculosis infection among gold miners in South Africa. *Int J Tuberc Lung Dis* 2009;13:39–46.
- [9] Sobota RS, Stein CM, Kodaman N, Maro I, Wieland-Alter W, Jr RPI, *et al.* A chromosome 5q31.1 locus associates with tuberculin skin test reactivity in HIV-positive individuals from tuberculosis hyper-endemic regions in east Africa. *PLOS Genetics* 2017;13:e1006710. <https://doi.org/10.1371/journal.pgen.1006710>.
- [10] Stein CM, Zalwango S, Malone LL, Won S, Mayanja-Kizza H, Mugerwa RD, *et al.* Genome scan of *M. tuberculosis* infection and disease in Ugandans. *PLoS ONE* 2008;3:e4094. <https://doi.org/10.1371/journal.pone.0004094>.
- [11] Stein CM, Mayanja-Kizza H, Hawn TR, Boom WH. Importance of Study Design and Phenotype Definition in Ongoing Studies of Resistance to Latent *Mycobacterium tuberculosis* Infection. *J Infect Dis* 2020;221:1025–1026. <https://doi.org/10.1093/infdis/jiz539>.
- [12] Lu LL, Smith MT, Yu KKQ, Luedemann C, Suscovich TJ, Grace PS, *et al.* IFN- γ -independent immune markers of *Mycobacterium tuberculosis* exposure. *Nat Med* 2019;25:977–987. <https://doi.org/10.1038/s41591-019-0441-3>.
- [13] Crampin AC, Mwaungulu JN, Mwaungulu FD, Mwafulirwa DT, Munthali K, Floyd S, *et al.* Recurrent TB: relapse or reinfection? The effect of HIV in a general population cohort in Malawi. *AIDS* 2010;24:417–426. <https://doi.org/10.1097/QAD.0b013e32832f51cf>.
- [14] Houben RMGJ, Crampin AC, Ndhlovu R, Sonnenberg P, Godfrey-Faussett P, Haas WH, *et al.* Human immunodeficiency virus associated tuberculosis more often due to recent infection than reactivation of latent infection. *Int J Tuberc Lung Dis* 2011; 15:24–31.
- [15] Sonnenberg P, Murray J, Glynn JR, Shearer S, Kambashi B, Godfrey-Faussett P. HIV-1 and recurrence, relapse, and reinfection of tuberculosis after cure: a cohort study in South African mineworkers. *Lancet* 2001;358:1687–93. [https://doi.org/10.1016/S0140-6736\(01\)06712-5](https://doi.org/10.1016/S0140-6736(01)06712-5).
- [16] Verver S, Warren RM, Munch Z, Vynnycky E, van Helden PD, Richardson M, *et al.* Transmission of tuberculosis in a high incidence urban community in South Africa. *Int J Epidemiol* 2004;33:351–357.
- [17] South African National HIV Prevalence, Incidence, Behaviour and Communication Survey, 2017 – The Human Sciences Research Council (HSRC) n.d. <https://www.hscresearch.ac.za/books/south-african-national-hiv-prevalence-incidence-behaviour-and-communication-survey-2017> (accessed September 4, 2019).
- [18] Wood R, Liang H, Wu H, Middelkoop K, Oni T, Rangaka MX, *et al.* Changing prevalence of TB infection with increasing age in high TB burden townships in South Africa. *Int J Tuberc Lung Dis* 2010; 14(4):406–412.
- [19] Gallant CJ, Cobat A, Simkin L, Black GF, Stanley K, Hughes J, *et al.* The impact of age and sex on anti-mycobacterial immunity of children and adolescents in an area of high tuberculosis incidence. *Int J Tuberc Lung Dis* 2010; 14(8):952–959.
- [20] WHO | Global tuberculosis report 2019. WHO n.d. http://www.who.int/tb/publications/global_report/en/ (accessed October 31, 2019).

- [21] TB Statistics for South Africa | National & provincial. TBFacts n.d. <https://tbfacts.org/tb-statistics-south-africa/> (accessed October 31, 2019).
- [22] HIV statistics for South Africa | Prevalence, incidence, ARVs. TBFacts n.d. <https://tbfacts.org/hiv-statistics-south-africa/> (accessed October 25, 2019).
- [23] Holmes CB, Wood R, Badri M, Zilber S, Wang B, Maartens G, *et al.* CD4 Decline and Incidence of Opportunistic Infections in Cape Town, South Africa: Implications for Prophylaxis and Treatment. *JAIDS* 2006;42:464–469. <https://doi.org/10.1097/01.qai.0000225729.79610.b7>.
- [24] Lawn SD, Myer L, Edwards D, Bekker L-G, Wood R. Short-term and long-term risk of tuberculosis associated with CD4 cell recovery during antiretroviral therapy in South Africa. *AIDS* 2009;23:1717–1725. <https://doi.org/10.1097/QAD.0b013e32832d3b6d>.
- [25] Lawn SD, Harries AD, Williams BG, Chaisson RE, Losina E, De Cock KM, *et al.* Antiretroviral therapy and the control of HIV-associated tuberculosis. Will ART do it? *Int J Tuberc Lung Dis* 2011;15:571–581. <https://doi.org/10.5588/ijtld.10.0483>.
- [26] Lyashchenko K, Manca C, Colangeli R, Heijbel A, Williams A, Gennaro ML. Use of *Mycobacterium tuberculosis* complex-specific antigen cocktails for a skin test specific for tuberculosis. *Infect Immun* 1998;66:3606–3610.
- [27] Mave V, Chandrasekaran P, Chavan A, Shivakumar SVBY, Danasekaran K, Paradkar M, *et al.* Infection free “resisters” among household contacts of adult pulmonary tuberculosis. *PLOS ONE* 2019;14:e0218034. <https://doi.org/10.1371/journal.pone.0218034>.
- [28] Lawn SD, Wilkinson RJ. ART and prevention of HIV-associated tuberculosis. *Lancet HIV* 2015;2:e221–222. [https://doi.org/10.1016/S2352-3018\(15\)00081-8](https://doi.org/10.1016/S2352-3018(15)00081-8).
- [29] Wilkinson KA, Seldon R, Meintjes G, Rangaka MX, Hanekom WA, Maartens G, *et al.* Dissection of regenerating T-Cell responses against tuberculosis in HIV-infected adults sensitized by *Mycobacterium tuberculosis*. *Am J Respir Crit Care Med* 2009;180:674–683. <https://doi.org/10.1164/rccm.200904-0568OC>.
- [30] Riou C, Jhilmeet N, Rangaka MX, Wilkinson RJ, Wilkinson KA. Tuberculosis antigen-specific T-cell responses during the first 6 months of antiretroviral treatment. *J Infect Dis* 2020; 221(1):162–167. <https://doi.org/10.1093/infdis/jiz417>.
- [31] Hsu DC, Kerr SJ, Thongpaeng P, Iampornsin T, Pett SL, Zaunders JJ, *et al.* Incomplete restoration of *Mycobacterium tuberculosis*-specific-CD4 T-cell responses despite antiretroviral therapy. *J Infect* 2014;68:344–354. <https://doi.org/10.1016/j.jinf.2013.11.016>.
- [32] Sutherland JS, Young JM, Peterson KL, Sanneh B, Whittle HC, Rowland-Jones SL, *et al.* Polyfunctional CD4(+) and CD8(+) T-cell responses to tuberculosis antigens in HIV-1-infected patients before and after antiretroviral treatment. *J Immunol* 2010;184:6537–6544. <https://doi.org/10.4049/jimmunol.1000399>.
- [33] Behr MA, Edelstein PH, Ramakrishnan L. Is *Mycobacterium tuberculosis* infection life long? *BMJ* 2019;367:l5770. <https://doi.org/10.1136/bmj.l5770>.
- [34] Ferebee SH. Controlled chemoprophylaxis trials in tuberculosis. A general review. *Bibl Tuberc* 1970;26:28–106.
- [35] Houk VN, Baker JH, Sorensen K, Kent DC. The epidemiology of tuberculosis infection in a closed environment. *Arch Environ Health* 1968;16:26–35.
- [36] Atuk NO, Hunt EH. Serial tuberculin testing and isoniazid therapy in general hospital employees. *JAMA* 1971;218:1795–8.
- [37] Aguilo N, Gonzalo-Asensio J, Alvarez-Arguedas S, Marinova D, Gomez AB, Uranga S, *et al.* Reactogenicity to major tuberculosis antigens absent in BCG is linked to improved protection against *Mycobacterium tuberculosis*. *Nat Commun* 2017; 8:16085. <https://doi.org/10.1038/ncomms16085>.
- [38] Cornell M, McIntyre J, Myer L. Men and antiretroviral therapy in Africa: our blind spot. *Trop Med Int Health* 2011;16:828–829. <https://doi.org/10.1111/j.1365-3156.2011.02767.x>.
- [39] Cornell M, Cox V, Wilkinson L. Public health blindness towards men in HIV programmes in Africa. *Trop Med Int Health* 2015;20:1634–1635. <https://doi.org/10.1111/tmi.12593>.
- [40] Allwood BW, Goldin J, Said-Hartley Q, van Zyl-Smit RN, Calligaro G, Esmail A, *et al.* Assessment of previous tuberculosis status using questionnaires, chest X-rays and computed tomography scans. *Int J Tuberc Lung Dis* 2015;19:1435–1440. <https://doi.org/10.5588/ijtld.14.0992>.

PART 1:



PART 2:

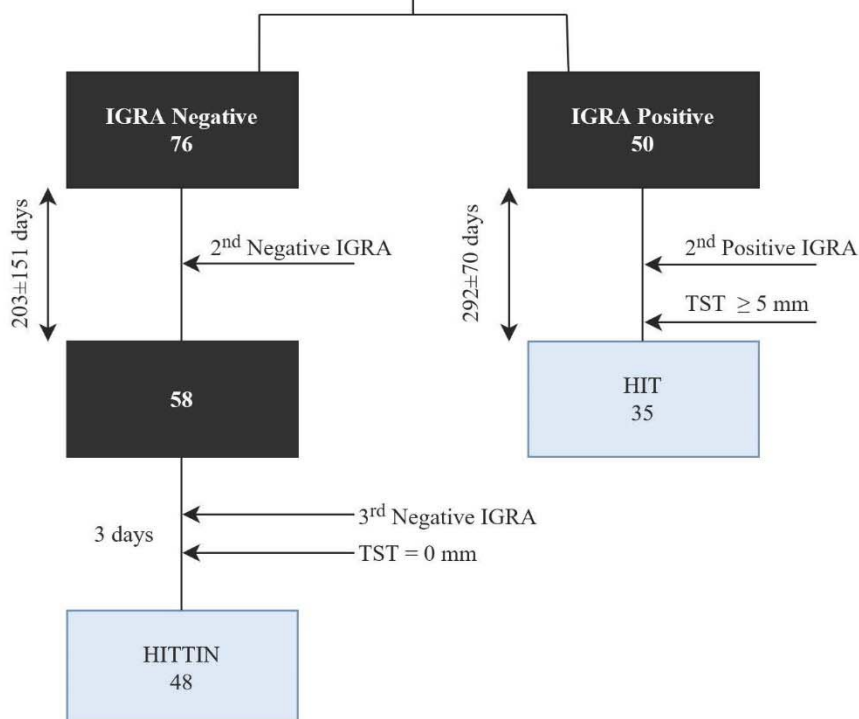


Figure 1: Schematic depicting the identification of HIV-1-infected persistently TB, tuberculin and IGRA negative (HITTIN)

Participants (333) agreed to partake in part one of the study and fulfilled criteria. They were identified as Arm 1 (no previous TB) or Arm 2 (previous TB) subjects. Arm 1 participants were tested by IGRA. For the second part of the study, a subset of IGRA positive participants were invited for a second IGRA and TST administration and reading. Participants who had two positive IGRA results and a TST ≥ 5 mm were designated HIT. The participants who tested negative were also invited for a second IGRA and TST. They were seen 3 days later for a third IGRA and TST reading. Participant with three repeat IGRA negative results and a TST = 0mm were designated HITTIN.

	HITTIN	(%)	HIT (IGRA double+, TST>5mm)	(%)	p-value	HIV-1-infected, Previous TB	(%)	p-value
n	48		35			47		
Age at enrollment	43.3±5.6		42.9±5.6		0.72	40.7±8.2		0.07
Sex (% female)	41	85.4	30	85.7	>0.99	33	70.2	0.09
Income range								
R0-R3000	27	56.3	22	62.8		33	70.2	
R3001-R5000	16	33.3	8	22.9		7	14.9	
Above R5000	5	10.4	5	14.3	0.56	7	14.9	0.26
Education level								
No schooling	0	0.0	0	0.0		1	2.1	
Primary school	3	6.3	7	20.0		3	6.4	
High school	41	85.4	28	80.0		43	91.5	
Diploma/Degree	4	8.3	0	0.0	0.09	0	0.0	0.71
Employed	26	54.2	19	54.3	>0.99	23	48.9	0.68
Weight (kg)	78.1±17.7		82.7±17.8		0.27	72.2±17.3		0.09
Height (m)	1.6±0.1		1.7±0.1		0.29	1.7±0.1		0.38
BMI	28.2±6.2		29.2±5.9		0.46	25.6±5.9		0.04
Years since HIV diagnosis (from diagnosis to 1st enrolment)	8.0±3.0		10.0±4.0		0.01	9.4±3.1		0.02
Time between HIV diagnosis and TB diagnosis	Not applicable		Not applicable			2.0±3.0		
Age at TB diagnosis	Not applicable		Not applicable			33.1±8.2		
Time on ART in years (from ART start to 1st enrolment)	7.0±3.0		8.0±3.0		0.04	8.0±2.2		0.03
Time in years since HIV diagnosis and ART start	1.0±2.0		2.0±3.0		0.09	1.0±2.0		0.33
CD4 count before ART initiation								
< 200 CD4+ cells/mm3	47	97.9	33	94.3		44	93.6	
Between 200-350 CD4+ cells/mm3	1	2.1	2	5.7	0.57	3	6.4	0.36
Most recent CD4 count	505.8±191.4		486.9±193.8		0.66	544.3±241.8		0.39
Last viral load (no VL done at diagnosis)								
LDL	27	56.3	20	57.1		27	57.5	
< 20	5	10.4	9	25.7		4	8.5	
<100	11	22.9	6	17.1		5	10.6	
100-1000	4	8.3	0	0.0		9	19.2	
>1000	1	2.1	0	0.0	0.09	2	4.3	>0.99

AIDS defining illness in last year	0	0-0	0	0-0		0		
IPT received	38	79.2	32	91.4	0.22	44	93.6	0.07
Current IPT	5	10.4	1	2.9	0.39	4	8.5	>0.99
Cotrimoxazole used	24	50.0	23	65.7	0.18	28	59.6	0.41
Previous interventional studies	0	0-0	0	0-0		3	6.4	
Other illness								
Diabetes	0	0-0	1	2.9		1	2.1	
Asthma	1	2.1	0	0-0		0	0-0	
Hypertension	13	27.1	6	17.1		4	8.5	
Other	2	4.2	0	0-0	0.22	3	6.4	0.10
Recreational substances (cannabis)	3	6.3	1	2.9	0.63	2	4.3	>0.99
Alcohol use								
No alcohol	33	68.8	28	80.0		31	66.0	
Occasionally	12	25.0	7	20.0		16	34.0	
Once a week	3	6.3	0	0-0	0.32	0	0-0	0.83
Smoking (Yes)								
Current	2	4.2	1	2.9		5	10.6	
Previous	0	0-0	0	0-0	>0.99	2	4.3	0.09

^aThe initial p-value refers to the comparisons between HITIN and the HIT group. The second p-value here refer to the comparisons between HITIN and previous TB group.

^bCategorical frequencies between the HITIN and HIT groups were compared using the Fisher's exact or χ^2 test. Means were compared using the unpaired t test.

^cBMI (body mass index) was calculated as weight (kg)/height² (m).

^dHIV (human immunodeficiency viruses)

^eTB (Tuberculosis)

^fART (Antiretroviral therapy)

^gLDL (lower than detectable)

^hIPT (Isoniazid preventive therapy)

Table 1: Demographic data

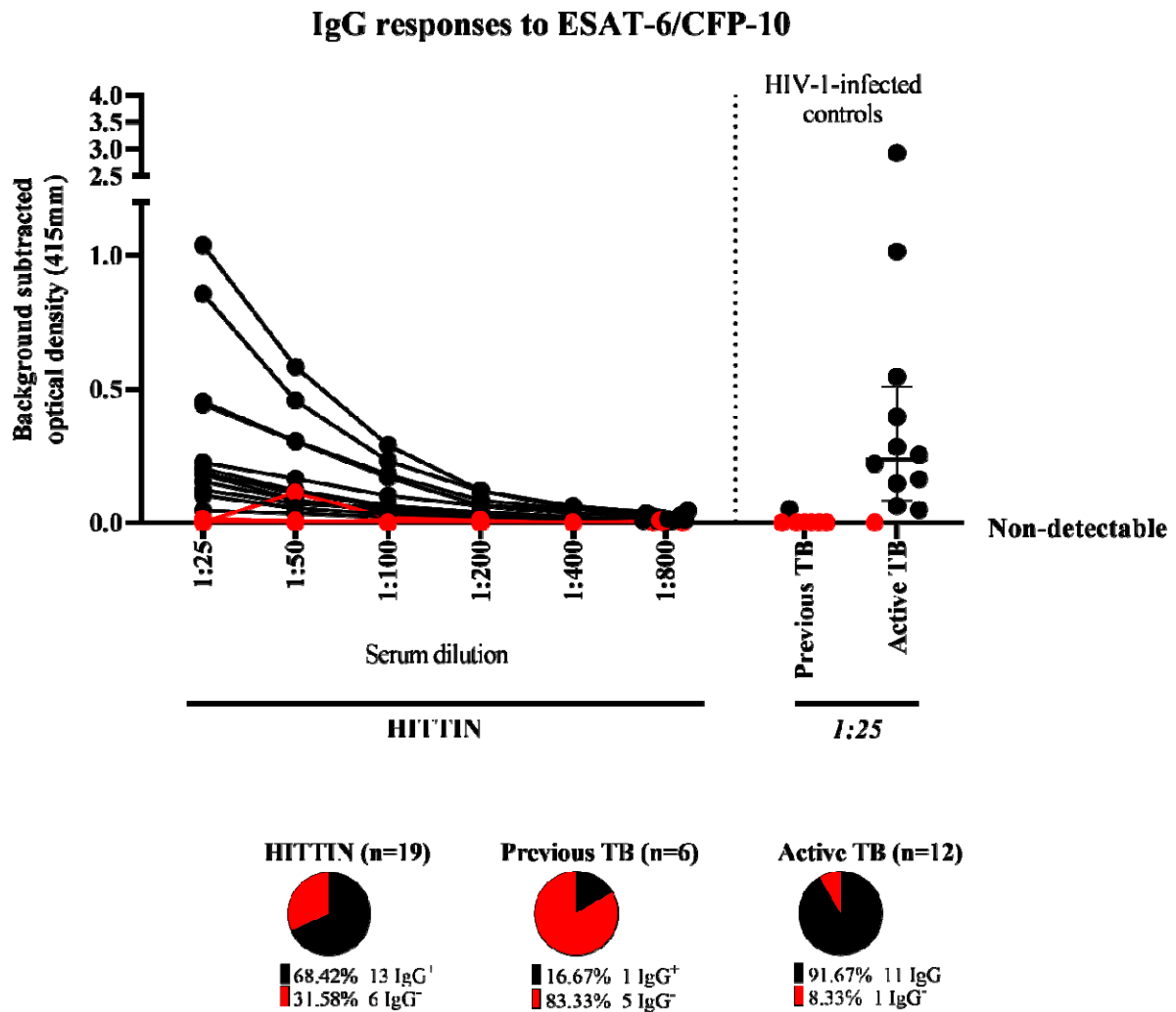


Figure 2: IgG responses to ESAT-6/CFP-10

IgG antibody titers against *Mtb*-specific antigens ESAT-6/CFP-10 (4μg/ml). Titration curves of serum antibody responses against a fusion protein of ESAT-6 and CFP-10 (Lionex) in 19 HITIN. Optical density (OD 415nm) values from antigen-uncoated wells at each dilution were subtracted from serum OD values at that dilution. A positive response was determined by OD values above background, and absent binding curves are demonstrated in red. Controls include 6 individuals with previous TB from Arm 2, and HIV-1-infected controls with active TB with median and interquartile ranges shown. Out of 19 HITIN tested, 13 demonstrated decreased OD on dilution (68.4%), whereas only 1/6 (16.7%) of Arm 2 participants did (16.7%), and 11/12 (91.7%) controls with active TB. There is no statistically significant difference between IgG⁺ antibodies in HITIN compared to the previous TB (Arm 2) group (p=0.0561) and active TB group (p=0.2015).

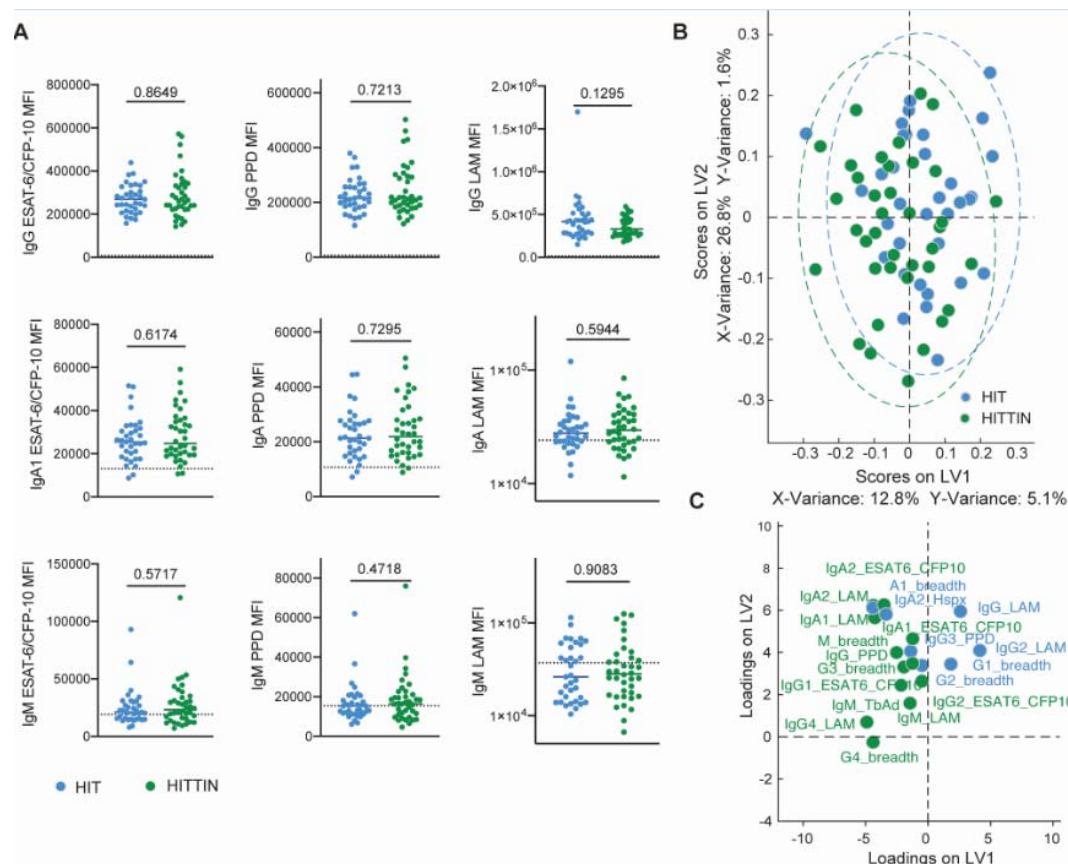


Figure 3: HITIN and HIT individuals harbor similar antibody profiles across subclasses/isotypes and antigens

A: Plasma levels of IgG, IgA1 and IgM reactive to ESAT6/CFP10, PPD and LAM were profiled across HITIN (n=38) and HIT individuals (n=35) represented by MFI using a customized Luminex assay. The antigen-specific isotype levels are plotted for the two different groups, HITIN (green) and HIT individuals (blue), the median is depicted, the dotted line represents the median level detected in HIV-negative, healthy North American volunteers. Mann-Whitney test was used to compare between groups. **B and C:** LASSO-PLSDA was performed utilizing antigen-specific antibody levels (total number of initial features=48). The scores plot (**B**) shows the distribution of groups (each dot represents one individual) across two latent variables (LV1 and 2), driven by the down selected features (**C**).

Supplementary material

Pilot study prescreening of records

Screening of paper records as well as electronic database management systems were based on enrolment criteria that aimed to maximize exposure to *Mycobacterium tuberculosis* (*Mtb*) in the absence of documented clinical tuberculosis (TB). As part of a pilot study, we used this prescreening of records to identify possible participants who met the criteria for enrolment. First, we targeted our search to HIV-infected patients in the age group of 35 years to 60 years since age is a surrogate for cumulative likelihood of infectious exposure and an established strong risk factor for latent TB infection (LTBI) [1]. Second, all potential study participants needed to have had a prolonged period of very low CD4 counts (two CD4+ < 350 cells/mm³ counts at least 6 months apart or a single CD4+ count < 200 cells/mm³), which was a common occurrence prior to the implementation of more intensive HIV screening and antiretroviral therapy (ART) in South Africa. Third, at the time of enrolment we identified potential study participants who had been on ART for at least one year and were immune reconstituted with the latest CD4+ > 200 cells/mm³ and no history of acquired immune deficiency syndrome (AIDS) defining illnesses in the last year. Fourth, stratification was done, based on clinic record of previous TB.

Study procedure

Participants were prescreened and approached on the day of their regular visit to the community healthcare clinic (CHC) to access ART. After obtaining written informed consent, each participant was screened for TB using the World Health Organization (WHO) TB symptoms questionnaire (cough of any duration, fever for more than two weeks, unexplained weight loss, drenching night sweats). Any participant suspected of having TB was excluded from the study and referred for TB workup at the local clinic. Other relevant medical history obtained included known medical comorbidities, medication use, relevant HIV history, Isoniazid Preventive Therapy (IPT) history and history of Cotrimoxazole preventative therapy. Pregnancy was an exclusion criterion. In our cohort of participants, childhood immunization procedures were variable and inconsistently recorded. Bacille Calmette-Guérin (BCG) status was not recorded. It was not possible for us to ascertain BCG status with confidence, as discussed in Rangaka et al. [2]. However, BCG vaccination has been a routine part of the national expanded program on immunization (EPI) in South Africa since 1973.

The study design is depicted in supplementary figure 1. Samples were collected over a period of 2.5 years. In total, we obtained informed consent from 340 people, while 7 potential participants declined in part one of the study. After the informed consent, 286 participants were enrolled in Arm 1 (no previous TB). The majority (97.4%) of those enrolled had CD4+ counts of < 200 cells/mm³ prior to initiating ART. Of the 286 participants 18 were excluded. Of the 268 remaining participants 91 (34%) tested interferon gamma release assay (IGRA) negative, 172 (64%) IGRA positive and 5 (2%) were indeterminate. In Arm 2, 47 participants agreed to partake in the study. Seven participants were excluded since they failed the eligibility criteria and one participant was excluded due to lack of comprehension which precluded informed consent.

For the second part of the study participants were selected according to their Arm 1 IGRA result. For the IGRA positive group we recontacted participants and made appointments based on soonest availability. We reached our target number which was sufficient for a balanced design in a reasonable amount of time. Of the sixty participants recontacted, ten did not honour appointments. One participant was excluded prior to the repeat IGRA, after admitting to having TB meningitis in 2011. The other participant was excluded due to presenting with TB symptoms on the 3rd visit when returning for a TST reading. Thirty-five participants have two positive IGRA results and a TST reading of ≥ 5mm. Although the cutoff for TST positive readings was defined as ≥ 5mm, all of the 35 TST readings were ≥ 10mm with a mean reading of 18mm. These 35 participants were defined as HIV-1-infected IGRA positive tuberculin positive (HIT).

Seventy-six of the 91 IGRA-negative participants were willing to continue in the study for a second IGRA and TST administration. Fifteen participants were lost to follow-up, 6 were unreachable, 7 did not keep appointments and 2 refused consent (supplementary figure 1). Of these 76 participants, 62 tested IGRA negative on second testing, thirteen tested IGRA positive and there was one indeterminate result.

In the 62 who tested IGRA negative with the second test, the average time between the enrolment IGRA and the second IGRA was 212±140 days. After this visit four participants did not return for the TST reading and a third IGRA. Of the 58 participants who returned for a third visit (3 days later), three had a positive third IGRA result (2

TST = 0mm, 1 TST = 15mm) and four did not have a third IGRA (TST = 7, 7, 10, 16mm). In total 51 participants tested IGRA negative for the third time, 48 had TST readings of 0 mm and two had TST readings of 1 mm. Only 1 participant had a TST reading of 6 mm (supplementary figure 1). The 48 participants with persistent IGRA negative and TST readings of 0mm were defined as HIV-1-infected persistently TB, tuberculin and IGRA negative (HITTIN).

One of the thirteen participants with a positive second IGRA result was excluded due to presenting with TB symptoms. The remaining twelve participants had the following IGRA results and TST readings (supplementary figure 1°). Two participants had a third IGRA positive result (TST 10, 20mm), two did not have a third IGRA (TST 13, 19mm) and eight had negative third IGRA result (6 TST = 0mm, 1 TST = 1mm, 1 TST = 20mm).

There were six participants who converted from IGRA negative to positive with the second IGRA, tested negative with the third IGRA and had TST readings of 0 mm. Upon closer investigation of these individuals we noticed that 4 of the positive results on the second IGRA were close to the cut-offs determined by the manufacturer's algorithm (see supplementary figure 2 A and B).

Three participants who tested negative on the first and on the second IGRA tested positive on the third IGRA done 3 days after TST administration. Although the three IGRA positives were likely due to boosting, we did not include them in the HITTIN subject count [3].

We repeated the TST using PPD-RT23 on average 402 days after the first administration of PPD-S in 8 of the participants (Supplementary table 1). The results were identical for TST=0mm (6 subjects) or near identical for TST > 5 mm (18mm vs 16mm and 28mm vs 26mm on the first read) which is consistent with previous reports [4]. Five of these six participants are IGRA negative and one tested IGRA positive.

IGRA

For IGRAs, participants had 4-5 ml of blood taken and fresh blood was collected for a QuantiFERON®-TB Gold Plus (QFT®-Plus) in tube test (containing contain ESAT-6, CFP-10 and TB 7.7 antigens in two TB antigen tubes) as determined by the supplier. Peptides in the TB1 tubes were selected to elicit CD4+ T-helper lymphocyte response, whereas TB2 has additional peptides for CD8+ cytotoxic T lymphocyte responses. Negative results were interpreted as per the manufacturer's algorithm [5].

TST

The TST was performed by injecting 0.1 ml of tuberculin purified protein derivative (PPD) intradermally and immediately after drawing blood for QFT®-Plus. This was administered during part 2 of the study when selected Arm 1 participants returned for a second IGRA. For logistical reasons, the initial 104 subjects (49 Arm 1 IGRA positives and 55 Arm 1 IGRA negatives) were tested employing PPD-S (Pasteur-Merieux) while the remaining 20 Arm 1 IGRA negatives subjects were tested with PPD RT23 (Staten Serum Institute). The TST was read on average 72 hours after administration. A total of eight participants were repeat tested with both PPD-S and RT23 [4]. The distribution of HITTIN did not differ between Arm 1 IGRA negatives testing with PPD-S (37/55) or PPD RT23 (11/20) ($p=0.3275$).

Mtb antibody detection via ELISA

ELISA plates (Nunc MaxiSorp) were coated with 4µg/ml of a recombinant ESAT-6/CFP-10 fusion protein (Lionex LRP-0074-2, Braunschweig, DE) diluted in carbonate bicarbonate buffer (Sigma Aldrich, St Louis MO) overnight at 4°. Next, plates were washed with PBS containing 0.05% Tween-20 (v/v) and blocked with 3% BSA (Sigma Aldrich) for 1 hour at room temperature (RT). Plates were then washed again and coated with patient serum diluted in blocking buffer for 2 hours before washing. Plates were then coated with a secondary anti-human IgG-Alkaline phosphatase conjugated antibody (Sigma Aldrich A3187) diluted 1:1000 in blocking buffer for 1 hour at RT. After washing, plates were then developed with p-nitrophenyl phosphate (PNPP) (Sigma Aldrich) and optical density (OD) values at 415nm read after 30min incubation. OD of antigen uncoated wells was subtracted from wells coated with antigen at each serum dilution, and values normalized to control serum on each plate.

Mtb antibody detection via Luminex microspheres

Relative concentration of antigen-specific antibody subclass and isotype levels were assessed via a customized Luminex array [6]. Different *Mtb* antigens (PPD, ESAT6/CFP10 and , LAM, acquired from BEI resources) and

TbAd generously provided by Branch Moody, Brigham and Women's Hospital) were carboxyl-coupled to fluorescent microspheres (MAGPLEX) (Luminex). Coupling was performed by covalent N-hydroxysuccinimide (NHS)-ester linkages via EDC (Thermo Scientific) and Sulfo-NHS (Thermo Scientific) following the manufacturer's instructions. 1.2×10^3 beads per Luminex region/ antigen were added per well of a 384-well plate (Greiner Bio-one) in Luminex assay buffer containing 0.1% BSA and 0.05% Tween-20. 1:10 in PBS diluted plasma samples were added to each well and incubated for 16 h shaking at 900 rpm at 4°C. The immune complexed beads were then washed three times with 60 µl of Luminex assay buffer using an automated plate washer (Tecan). Phycoerythrin (PE)-coupled IgG1, IgG2-, IgG3-, IgG4, IgA1-, IgA2-, IgM- or bulk IgG-specific detection reagents (Southern Biotech) were added at 1.3 µg/ml and incubated with microspheres for 1 h at room temperature while shaking at 900 rpm. The plate was then washed and read on a flow cytometer (iQue, Intellicyt). Events were gated on the specific bead regions based on bead fluorescence and median fluorescent intensity (MFI) for PE was the readout for each secondary detector and bead region. Samples were run in duplicate per each secondary detection agent.

Statistical analysis

For demographic data, statistical analysis was performed using Graphpad Prism Version 8.2.0 for Windows, GraphPad Software, San Diego, California USA, www.graphpad.com. An unpaired t test was used for continuous variables and the Fisher's exact test for comparing nominal variables. A p-value of <0.05 was considered to be statistically significant.

To compare the HIT and HIT groups for isotype data, a Mann-Whitney test was performed. For the correlation analyses, pairwise nonparametric two-tailed spearman correlations for the different subclasses and isotypes against ESAT-6/CFP-10 were performed. P values were corrected for multiple comparisons via Bonferroni correction for 15 tests. (Significance for all analyses were defined as p-value <0.05, * $p < 0.05$, ** $p < 0.01$, *** $p < 0.001$, **** $p < 0.0001$.) Significance for all analyses were defined as Bonferroni corrected p-value <0.05.

The multivariate analysis was performed as a two-step model on 48 antibody features to assess differences and similarities and their drivers comprehensively between HIT and HIT individuals. Following normalization of the data, a penalty-based least absolute shrinkage and selection operator (LASSO) was applied to reduce highly correlated features and select the minimal number of features capturing the maximal difference within the dataset, validated by 10-fold cross validation [7]. LASSO performs a feature reduction which down selects the data set to the fewest features that capture the overall variation in antibody data and the PLSDA model uses this minimal set of features for the maximal separation between two groups by composing both X and Y variables into a hyperplane and maximizes covariance. A total of 48 features of IgG, IgG1-4, IgA1-2 and IgM against different TB antigens were included in the analysis. After feature reduction, Partial least square discriminate analysis (PLSDA) was performed to graph the data and visualize the differences between the groups along the latent variable (LV) 1 and 2. One-thousand iterations were applied to the 10-fold nested cross-validation model.

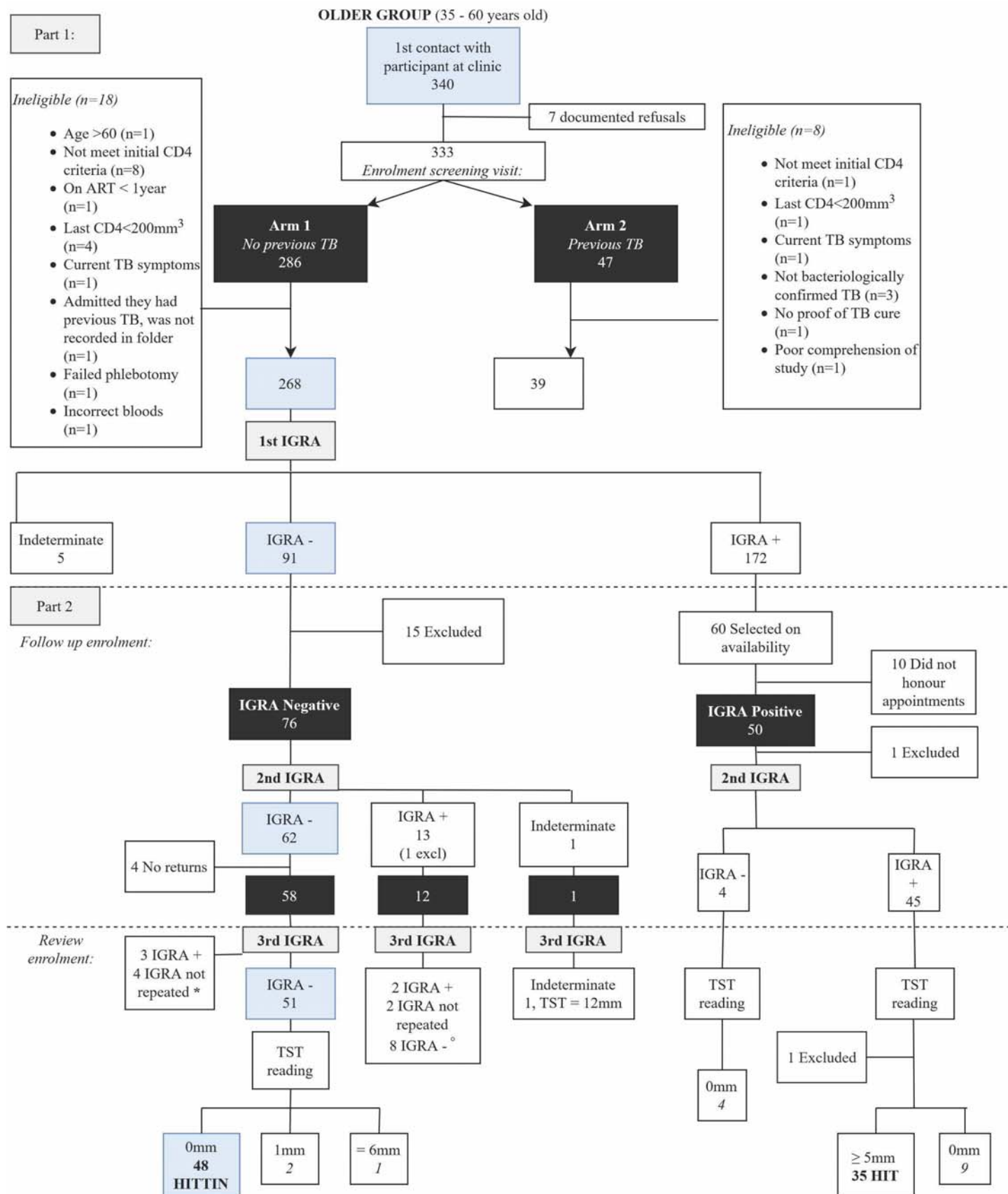
References:

- [1] Wood R, Liang H, Wu H, Middelkoop K, Oni T, Rangaka MX, *et al.* Changing prevalence of TB infection with increasing age in high TB burden townships in South Africa. *Int J Tuberc Lung Dis* 2010 Apr;14(4):406-12.
- [2] Rangaka MX, Wilkinson KA, Seldon R, Van Cutsem G, Meintjes GA, Morroni C, *et al.* Effect of HIV-1 infection on T-Cell-based and skin test detection of tuberculosis infection. *Am J Respir Crit Care Med* 2007 Mar 1;175(5):514-20. doi: 10.1164/rccm.200610-1439OC.
- [3] Andrews JR, Hatherill M, Mahomed H, Hanekom WA, Campo M, Hawn TR, *et al.* The Dynamics of QuantiFERON-TB Gold In-Tube Conversion and Reversion in a Cohort of South African Adolescents. *Am J Respir Crit Care Med*. 2015 Mar 1; 191(5): 584–91. doi: 10.1164/rccm.201409-1704OC.
- [4] Yang H, Kruh-Garcia NA, Dobos KM. Purified Protein Derivatives of Tuberculin - Past, Present, and Future. *FEMS Immunol Med Microbiol* 2012;66:273–80. <https://doi.org/10.1111/j.1574-695X.2012.01002.x>.
- [5] Package Inserts QFT-Plus – QuantiFERON n.d. <https://www.quantiferon.com/products/quantiferon-tb-gold-plus-qft-plus/package-inserts/> (accessed January 29, 2020).
- [6] Brown EP, Normandin E, Osei-Owusu NY, Mahan AE, Chan YN, Lai JI, *et al.* Microscale purification of antigen-specific antibodies. *J Immunol Methods* 2015;425:27–36. <https://doi.org/10.1016/j.jim.2015.06.005>.

- [7] Zou H, Hastie T. Regularization and variable selection via the elastic net. *J R Statist Soc B*. 2005;67(2):301-20. <https://doi.org/10.1111/j.1467-9868.2005.00503.x>.

Participant number	IGRA	Previous TST reading in mm (PPD-S)	Previous TST date	Repeat TST reading in mm (PPD-RT23)	Repeat TST reading date
2RTB0013	Positive	16	30/01/2018	18	21/01/2019
2RTB0186	Negative	0	17/11/2017	0	21/01/2019
2RTB0253	Negative	0	23/11/2017	0	21/01/2019
2RTB0165	Negative	0	16/11/2017	0	24/01/2019
2RTB0183	Negative	0	17/11/2017	0	24/01/2019
2RTB0135	Negative	0	01/12/2017	0	24/01/2019
2RTB0015	Positive	0	30/01/2018	0	25/01/2019
2RTB0005	Positive	25	02/02/2018	28	28/01/2019

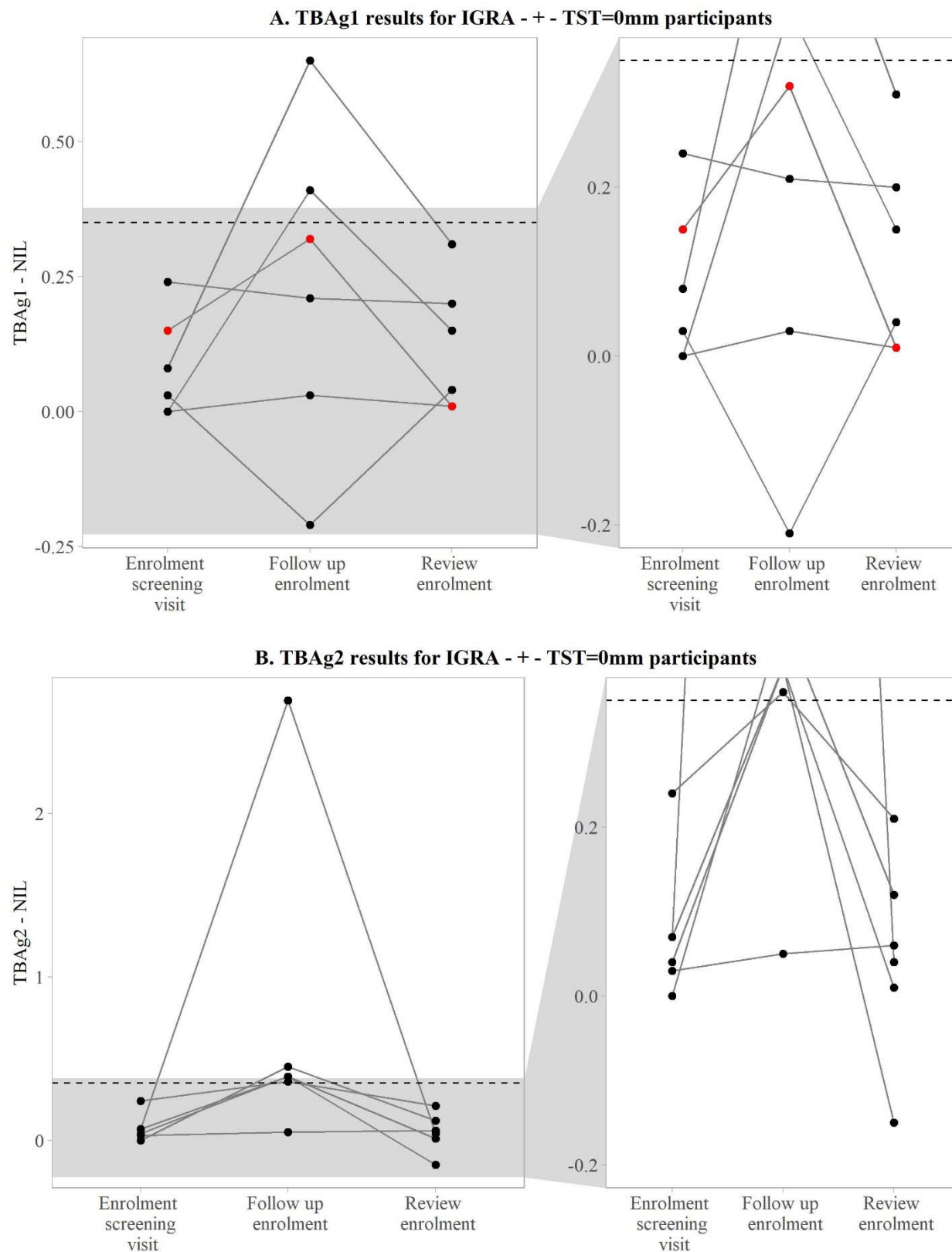
Supplementary Table 1: Comparison of TST after PPD-S and PPD-RT23 administration



Supplementary Figure 1: Recruitment flow diagram.

The main phenotype derived from **Arm 1 (visit 1)** of the study, was stringently defined according to the criteria discussed under prescreening of records. Eighteen Arm 1 participants were excluded.

We recalled as many negative IGRA participants as possible, since this is our phenotype of interest. Fifteen negative IGRA participants were excluded. Sixty-two of the part negative group had a negative second IGRA result. Four participants did not return. *Of the 58 participants who returned for a third visit, three had a positive third IGRA result (2 TST = 0mm, 1 TST = 15mm) and four did not have a third IGRA (TST = 7, 7, 10, 16mm). Forty-eight participants have three negative IGRA results and a TST reading of 0 mm and were defined as HITIN (indicated in blue on the flow diagram). °Eight participants tested IGRA negative on the first visit. They had a second positive IGRA result and retested IGRA negative the third time. Six of the eight had TST readings of 0 mm. These six participants likely had false positive IGRA results on the second IGRA test.



Supplementary Figure 2. A) TBAg1 and B) TBAg2 IGRA results of the six participants who converted during visit 2 (follow up enrolment) and reverted after 3 days (review enrolment). Each of the six participants had TST readings of 0 mm. The threshold of 0.35 IU/ml is indicated by the dashed line.