

SARS-CoV-2 Seroprevalence Among Parturient Women

Authors: Dustin D. Flannery^{1,2,3,13}; Sigrid Gouma^{4,13}; Miren B. Dhudasia^{1,3}; Sagori Mukhopadhyay^{1,2,3}; Madeline R. Pfeifer¹; Emily C. Woodford¹; Jeffrey S. Gerber^{2,3,5}; Claudia P. Arevalo⁴; Marcus J. Bolton⁴; Madison E. Weirick⁴; Eileen C. Goodwin⁴; Elizabeth M. Anderson⁴; Allison R. Greenplate^{6,7}; Justin Kim^{6,7}; Nicholas Han^{6,7}; Ajinkya Pattekar^{6,8}; Jeanette Dougherty^{6,7}; Oliva Kuthuru^{6,7}; Divij Mathew^{6,7}; Amy E. Baxter^{6,7}; Laura A. Vella^{5,6,7}; JoEllen Weaver⁹; Anurag Verma¹⁰; Rita Leite¹¹; Jeffrey S. Morris¹²; Daniel J. Rader^{9,10}; Michal A. Elovitz^{6,11}; E. John Wherry^{6,7}; Karen M. Puopolo^{1,2,3*}; Scott E. Hensley^{4,6*}

Affiliations:

¹ Division of Neonatology, Children's Hospital of Philadelphia, Philadelphia, PA.

² Department of Pediatrics, University of Pennsylvania Perelman School of Medicine, Philadelphia, PA.

³ Center for Pediatric Clinical Effectiveness, Children's Hospital of Philadelphia, Philadelphia, PA.

⁴ Department of Microbiology, University of Pennsylvania Perelman School of Medicine, Philadelphia, PA.

⁵ Division of Infectious Diseases, Children's Hospital of Philadelphia, Philadelphia, PA.

⁶ Institute for Immunology, University of Pennsylvania Perelman School of Medicine, Philadelphia, PA.

⁷ Department of Systems Pharmacology and Translational Therapeutics, University of Pennsylvania, Philadelphia, PA.

⁸ Division of Gastroenterology, Department of Medicine, University of Pennsylvania Perelman School of Medicine, Philadelphia, PA.

⁹ Institute for Translational Medicine and Therapeutics, University of Pennsylvania Perelman School of Medicine, Philadelphia, PA.

¹⁰ Departments of Genetics and Medicine, Perelman School of Medicine, University of Pennsylvania, Philadelphia, PA.

¹¹ Maternal and Child Health Research Center, Department of Obstetrics and Gynecology, University of Pennsylvania Perelman School of Medicine, Philadelphia, PA.

¹² Department of Biostatistics Epidemiology and Informatics, University of Pennsylvania, Philadelphia, PA.

[†] These authors contributed equally: D.D. Flannery and S. Gouma.

*Correspondence to: hensley@pennmedicine.upenn.edu and karen.puopolo@pennmedicine.upenn.edu

Abstract:

Limited data are available for pregnant women affected by SARS-CoV-2. Serological tests are critically important to determine exposure and immunity to SARS-CoV-2 within both individuals and populations. We completed SARS-CoV-2 serological testing of 1,293 parturient women at two centers in Philadelphia from April 4 to June 3, 2020. We tested 834 pre-pandemic samples collected in 2019 and 15 samples from COVID-19 recovered donors to validate our assay, which has a ~1% false positive rate. We found 80/1,293 (6.2%) of parturient women possessed IgG and/or IgM SARS-CoV-2-specific antibodies. We found race/ethnicity differences in seroprevalence rates, with higher rates in Black/non-Hispanic and Hispanic/Latino women. Of the 72 seropositive women who also received nasopharyngeal polymerase chain reaction testing during pregnancy, 46 (64%) were positive. Continued serologic surveillance among pregnant women may inform perinatal clinical practices and can potentially be used to estimate seroprevalence within the community.

One Sentence Summary: Six percent of pregnant women delivering from April 4 to June 3, 2020 had serological evidence of exposure to SARS-CoV-2 with notable race/ethnicity differences in seroprevalence rates.

Main Text:

Severe acute respiratory syndrome coronavirus 2 (SARS-CoV-2) can cause serious disease in adult populations, particularly in those with underlying health conditions (1). SARS-CoV-2 serological tests are important for determining immunity within individuals and populations (2). However, many commercial tests have high false positive rates and therefore cannot be used to accurately estimate seroprevalence in populations with relatively low levels of exposures (3,4). Serological tests are especially important for vulnerable populations such as pregnant women, because immune status has implications for management of both the pregnant woman and the newborn. Admission to the hospital for delivery is one of the few instances in which otherwise healthy individuals are consistently interacting with the medical system, and therefore provides an opportunity for population surveillance of SARS-CoV-2 serology.

We performed a prospective cohort study of pregnant women presenting for delivery from April 4 to June 3, 2020 at two academic birth hospitals in Philadelphia, Pennsylvania. Both hospitals are active clinical and research centers affiliated with the University of Pennsylvania, and combined represent 50% of live births in Philadelphia (5). Discarded maternal sera from delivery admission were collected, deidentified, and tested by enzyme-linked immunosorbent assay (ELISA) for SARS-CoV-2 immunoglobulin G (IgG) and immunoglobulin M (IgM) antibodies to the spike receptor binding domain (RBD) antigen.

Demographics and clinical characteristics of the women are shown in **Table 1**. Most serum specimens were derived from women living in areas within or immediately bordering the city of Philadelphia (**Figure 1**). Symptomatic pregnant women and those with known risk factors underwent SARS-CoV-2 nasopharyngeal (NP) nucleic acid polymerase chain reaction (PCR) testing from April 4-12, 2020; universal PCR testing was recommended for all pregnant women

presenting for delivery starting April 13, 2020. Of 1,620 women who delivered during the study period, 1,293 (80%) had available discarded serum specimens and were included in the analysis.

Our serological assay utilized a SARS-CoV-2 spike RBD antigen and modified ELISA protocol first described by Amanat *et al.* (6). We validated this serological assay by testing serum samples collected prior to the pandemic in 2019 from 834 individuals in the Penn Medicine Biobank and 15 individuals who recovered from confirmed coronavirus disease 19 (COVID-19) infections in 2020 (**Figure 2A-B**). All 15 serum samples from COVID-19 recovered donors contained high, but variable, levels of SARS-CoV-2 IgG (**Figure 2A**) and 10 of 15 samples contained detectable levels of SARS-CoV-2 IgM (**Figure 2B**). Conversely, only 5 of 834 samples collected before the pandemic contained SARS-CoV-2 IgG and only 4 of 834 samples contained SARS-CoV-2 IgM; none contained both IgG and IgM. Together, this indicates that there is an overall false positive rate ~1% (9/834) in our serological assay. Consistent with our initial validation experiments, only 1 of 140 samples collected from pregnant women before the pandemic (from 2009-2012) possessed IgG or IgM SARS-CoV-2 antibodies (**Figure 2C-D**).

We found that 80 of 1,293 (6.2%) pregnant women presenting for delivery from April 4 to June 3, 2020 possessed IgG or IgM SARS-CoV-2 antibodies (**Figure 2C-D**; $p = 0.003$ comparing samples from pre-pandemic and pandemic pregnant women). We identified 55 women with both SARS-CoV-2 IgG and IgM, 21 women with only SARS-CoV-2 IgG, and 4 women with only SARS-CoV-2 IgM (**Table 2**). SARS-CoV-2 antibody levels in samples from these women were variable (**Figure 2C-D**), similar to what we found in samples from individuals recovering from confirmed SARS-CoV-2 infections (**Figure 2A-B**). The seroprevalence rate was not statistically different comparing women living within the city limits

of Philadelphia (62/986, 6.3%) to those living in surrounding areas in Pennsylvania (12/191, 6.3%), or surrounding areas in New Jersey (5/107, 4.7%). In contrast, we observed significant race/ethnicity differences in seroprevalence rates with higher rates in Black/non-Hispanic (9.7%) and Hispanic/Latino (10.4%) women and lower rates in White/non-Hispanic (2.0%) and Asian (0.9%) women (**Table 1**).

NP swabs from 1,109 (85.8%) women were tested by SARS-CoV-2 PCR during the pregnancy or at the time of delivery. We found that 46 of 72 seropositive women who were NP tested had a SARS-CoV-2 positive PCR result, whereas only 18 of 1,037 seronegative women who were NP tested had a SARS-CoV-2 positive PCR result (**Table 1**; $p < 0.001$). While all serum samples were collected during the delivery admission, NP samples were collected at variable times either during the delivery admission or earlier in the pregnancy, and therefore, further study will be required to evaluate the temporal relationship between SARS-CoV-2 seropositivity and PCR positivity in pregnant women.

Large-scale serology testing is critical for estimating how many individuals have been infected during the COVID-19 pandemic. Due to widely-imposed social distancing requirements, and to decreases in on-site, discretionary medical care, it is currently difficult to collect serum for population-wide serological testing. The vast majority of pregnant women, however, continue to have multiple interactions with the medical system for prenatal care and for delivery during this pandemic, and therefore represent a unique population to assess SARS-CoV-2 immunity within a community. Our data suggest that ~5.2% (6.2% minus ~1% false positive rate) of parturient women in Philadelphia from April 4 to June 3, 2020 were previously exposed to SARS-CoV-2. As of June 3, 2020, there were 23,160 confirmed cases of COVID-19 in the city of Philadelphia (7), which has a population size of nearly 1.6 million people, suggesting an infection rate of

approximately 1.4%. Serologic studies may provide a more accurate means of assessing population exposure to SARS-CoV-2 by identifying asymptomatic or minimally symptomatic as well as symptomatic infections. Further studies are needed to determine how the immune status of pregnant women compares to that of the general population. For example, parturient women may not represent individuals of different ages within the general population and women and men might mount different antibody responses upon infection with SARS-CoV-2 (8).

Pregnant women of all demographics continue to seek medical care during the COVID-19 pandemic. Therefore, parturient women represent a unique population to assess differences in SARS-CoV-2 exposures in diverse populations. Our finding that Black/non-Hispanic and Hispanic/Latino women have higher SARS-CoV-2 seroprevalence rates relative to women of other races suggest that there are race/ethnicity differences in SARS-CoV-2 exposures in Philadelphia and surrounding areas. Identification of factors that contribute to such differences in exposure to SARS-CoV-2 may inform public health measures aimed at preventing further infections.

Prior perinatal COVID-19 studies have primarily focused on virus detection (i.e. nucleic acid testing) in pregnant women and have not evaluated immunity (9–17). Two published studies to date have assessed SARS-COV-2 serology in pregnant women with active disease. A study of 6 parturient women in Wuhan, China with confirmed COVID-19 found all 6 women had elevated levels of SARS-CoV-2 IgG and IgM (18). A case report from Peru detailed a symptomatic pregnant woman with positive PCR testing and negative serology at presentation, who developed severe respiratory failure necessitating delivery; her IgM and IgG turned positive 4 days after delivery (9 days after symptom onset) (19). Beyond describing individual response to infection, SARS-CoV-2 serological testing among pregnant women will be increasingly

important for perinatal disease risk management, as well as for optimizing vaccine strategies when vaccines become available. Additional studies will be needed to address the impact of maternal infection on neonatal immunity, and to determine those factors that may contribute to observed disparities in exposure to SARS-CoV-2.

5

References and Notes:

1. Wang D, Hu B, Hu C, Zhu F, Liu X, Zhang J, et al. Clinical Characteristics of 138 Hospitalized Patients with 2019 Novel Coronavirus-Infected Pneumonia in Wuhan, China. JAMA - J Am Med Assoc. 2020;
- 10 2. Abbasi J. The Promise and Peril of Antibody Testing for COVID-19. JAMA [Internet]. 2020 Apr 17 [cited 2020 Apr 24]; Available from: <http://www.ncbi.nlm.nih.gov/pubmed/32301958>
3. Crook D. Evaluation of antibody testing for SARS-CoV-2 using ELISA and lateral flow immunoassays. [cited 2020 May 1]; Available from: <https://doi.org/10.1101/2020.04.15.20066407>
- 15 4. Whitman JD, Hiatt J, Mowery CT, Shy BR, Yu R, Yamamoto TN, et al. Test performance evaluation of SARS-CoV-2 serological assays. medRxiv. 2020 Apr 29;2020.04.25.20074856.
5. Vital Statistics Annual Report [Internet]. [cited 2020 Apr 29]. Available from: <https://www.health.pa.gov/topics/HealthStatistics/VitalStatistics/PAVitalStatistics/Pages/vital-statistics-report.aspx>
- 20 6. Amanat F, Nguyen T, Chromikova V, Strohmeier S, Stadlbauer D, Javier A, et al. A

serological assay to detect SARS-CoV-2 seroconversion in humans. medRxiv [Internet].

2020 Apr 16 [cited 2020 May 1];2020.03.17.20037713. Available from:

<https://www.medrxiv.org/content/10.1101/2020.03.17.20037713v1>

7. City Provides Update on COVID-19 for Wednesday, June 3, 2020 | Department of Public Health | City of Philadelphia [Internet]. [cited 2020 Jun 18]. Available from:

<https://www.phila.gov/2020-06-03-city-provides-update-on-covid-19-for-wednesday-june-3-2020/>

8. Zeng F, Dai C, Cai P, Wang J, Xu L, Li J, et al. A comparison study of SARS-CoV-2 IgG antibody between male and female COVID-19 patients: a possible reason underlying different outcome between gender. medRxiv. 2020 Mar 27;2020.03.26.20040709.

9. Chen H, Guo J, Wang C, Luo F, Yu X, Zhang W, et al. Clinical characteristics and intrauterine vertical transmission potential of COVID-19 infection in nine pregnant women: a retrospective review of medical records. Lancet [Internet].

2020;395(10226):809–15. Available from: [http://dx.doi.org/10.1016/S0140-6736\(20\)30360-3](http://dx.doi.org/10.1016/S0140-6736(20)30360-3)

10. Chen R, Zhang Y, Huang L, Cheng B-H, Xia Z-Y, Meng Q-T. Safety and efficacy of different anesthetic regimens for parturients with COVID-19 undergoing Cesarean delivery: a case series of 17 patients. Can J Anaesth [Internet]. 2020; Available from: <http://www.ncbi.nlm.nih.gov/pubmed/32180175>

11. Li N, Han L, Peng M, Lv Y, Ouyang Y, Liu K, et al. Maternal and neonatal outcomes of pregnant women with COVID-19 pneumonia: a case-control study. medRxiv. 2020;2020.03.10.20033605.

12. Liu D, Li L, Wu X, Zheng D, Wang J, Yang L, et al. Pregnancy and Perinatal Outcomes of Women With Coronavirus Disease (COVID-19) Pneumonia: A Preliminary Analysis. *AJR Am J Roentgenol* [Internet]. 2020 Mar 18 [cited 2020 Mar 24];1–6. Available from: <http://www.ncbi.nlm.nih.gov/pubmed/32186894>
13. Liu W, Wang Q, Zhang Q, Chen L, Chen J, Zhang BM, et al. Title: Coronavirus disease 2019 (COVID-19) during pregnancy: a case series [Internet]. Preprints; 2020 Feb [cited 2020 Mar 24]. Available from: www.preprints.org
14. Wang X, Zhou Z, Zhang J, Zhu F, Tang Y, Shen X. A case of 2019 Novel Coronavirus in a pregnant woman with preterm delivery. *Clin Infect Dis*. 2020;
15. Zhang L, Jiang Y, Wei M, Cheng BH, Zhou XC, Li J, et al. [Analysis of the pregnancy outcomes in pregnant women with COVID-19 in Hubei Province]. *Zhonghua Fu Chan Ke Za Zhi* [Internet]. 2020 Mar 7 [cited 2020 Mar 24];55(0):E009. Available from: <http://www.ncbi.nlm.nih.gov/pubmed/32145714>
16. Zhu H, Wang L, Fang C, Peng S, Zhang L, Chang G, et al. Clinical analysis of 10 neonates born to mothers with 2019-nCoV pneumonia. *Transl Pediatr*. 2020;1(9):51–60.
17. Knight M, Bunch K, Vousden N, Morris E, Simpson N, Gale C, et al. Characteristics and outcomes of pregnant women admitted to hospital with confirmed SARS-CoV-2 infection in UK: national population based cohort study On behalf of the UK Obstetric Surveillance System SARS-CoV-2 Infection in Pregnancy Collaborative Group. [cited 2020 Jun 9]; Available from: <https://www.npeu.ox.ac>.
18. Zeng H, Xu C, Fan J, Tang Y, Deng Q, Zhang W, et al. Antibodies in Infants Born to Mothers with COVID-19 Pneumonia. *JAMA - Journal of the American Medical*

Association. American Medical Association; 2020. p. E1–2.

19. Alzamora MC, Paredes T, Caceres D, Webb CM, Valdez LM, La Rosa M. Severe COVID-19 during Pregnancy and Possible Vertical Transmission. *Am J Perinatol* [Internet]. 2020 Apr 18 [cited 2020 Apr 24]; Available from: <http://www.ncbi.nlm.nih.gov/pubmed/32305046>
20. Stadlbauer D, Amanat F, Chromikova V, Jiang K, Strohmeier S, Arunkumar GA, et al. SARS-CoV-2 Seroconversion in Humans: A Detailed Protocol for a Serological Assay, Antigen Production, and Test Setup. *Curr Protoc Microbiol* [Internet]. 2020 Jun 17 [cited 2020 May 2];57(1). Available from: <https://onlinelibrary.wiley.com/doi/abs/10.1002/cpmc.100>

Acknowledgments: We thank all members of the Wherry Lab and the Penn COVID-19 Sample Processing Unit for sample procurement, processing and logistics. We thank the staff of the Penn Medicine Biobank. We thank Florian Krammer (Mt. Sinai) for sending us the SARS-CoV-2 spike RBD expression plasmids. We thank Dr. Steven Melly (Drexel University) for his assistance in geographic analyses.

Funding: This work was supported by institutional funds from the University of Pennsylvania and an NIH grant AI082630 (to E.J.W.). We thank Jeffrey Lurie and we thank Joel Embiid, Josh Harris, David Blitzer for philanthropic support. E.J.W. is supported by the Parker Institute for Cancer Immunotherapy which supports the cancer immunology program at UPenn.

Author contributions: DDF conceptualized and designed the study, collected data, drafted the initial manuscript, and revised the manuscript. SG led the serological experiments, collected

data, and revised the manuscript. MBD designed the data collection instruments, collected data, carried out the analyses, and revised the manuscript. SM conceptualized and designed the study, designed the data collection instruments, carried out the analyses, and revised the manuscript.

MRP collected data and revised the manuscript. ECW collected data and revised the manuscript.

JSG conceptualized and designed the study, and revised the manuscript. CPA completed serological assays, analyzed data, and revised the manuscript. MJB completed serological assays, analyzed data, and revised the manuscript. MW completed serological assays, analyzed data, and revised the manuscript. ECG completed serological assays, analyzed data, and revised the

manuscript. EMA completed serological assays, analyzed data, and revised the manuscript. ARG

obtained and proceeded samples from recovered donors. JK obtained and proceeded samples

from recovered donors. NH obtained and proceeded samples from recovered donors. AP

obtained and proceeded samples from recovered donors. JD obtained and proceeded samples

from recovered donors. OK designed and established recovered donor cohort. DM processed and

characterized samples from recovered donors. AB oversaw acquisition, processing, and

characterization of samples from recovered donors. LAV designed and established recovered

donor cohort. JW supervised recruitment of participants in PMBB and identification of samples

for serology testing. AV analyzed demographic data of PMBB participants. RL provided samples

for the pre pandemic pregnant controls. JSM provided statistical advice, performed statistical

analyses, and revised the paper. DJR provided input on the use of PMBB controls and revised the

manuscript. MAE provided input and samples for the pre-pandemic pregnant controls and

revised the manuscript. EJW designed, established, and oversaw healthy donor cohort studies

and made revisions to the manuscript. KMP conceptualized and designed the study, coordinated

and supervised data collection, and revised the manuscript. SEH conceptualized and designed the study, coordinated and supervised serological studies, and revised the manuscript.

Competing interests: SEH has received consultancy fee from Sanofi Pasteur, Lumen, Novavax, and Merck for work unrelated to this report. EJW is a member of the Parker Institute for Cancer Immunotherapy. EJW has consulting agreements with and/or is on the scientific advisory board for Merck, Roche, Pieris, Elstar, and Surface Oncology. EJW is a founder of Surface Oncology and Arsenal Biosciences. EJW has a patent licensing agreement on the PD-1 pathway with Roche/Genentech. All other authors declare no competing interests related to this work.

Data and materials availability: All data are included in the manuscript.

Supplementary Materials:

Materials and Methods

Table 1. Demographics and Clinical Characteristics of the Study Cohort

Characteristics	Total (n = 1,293)	Seropositive ¹ (n = 80)	Seronegative (n = 1,213)	p-value ²
Age (in years), median (IQR)	31 (27, 35)	28 (24, 32)	31 (27, 35)	<0.001
Race, n (%)				
Black/Non-Hispanic	537 (41.5)	52 (65.0)	485 (40.0)	<0.001
White/Non-Hispanic	447 (34.6)	9 (11.3)	438 (36.1)	<0.001
Hispanic/Latino	125 (9.7)	13 (16.2)	112 (9.2)	0.04
Asian	106 (8.2)	1 (1.3)	105 (8.7)	0.01
Other/Unknown ³	78 (6.0)	5 (6.2)	73 (6.0)	0.93
Health insurance⁴, n (%)				<0.001
Private payor	727 (56.2)	26 (33.3)	701 (57.8)	
Public payor	561 (43.4)	52 (66.7)	509 (42.0)	
Uninsured	3 (0.2)	0	3 (0.2)	
Pre-pregnancy BMI⁵, n (%)				
Overweight (25.0 to <30.0)	345 (26.7)	28 (35.9)	317 (26.4)	0.07
Obese (≥30.0)	337 (26.1)	27 (34.6)	310 (25.8)	0.09
Diabetes⁶, n (%)	113 (8.7)	10 (12.5)	103 (8.5)	0.22
Hypertension⁶, n (%)	404 (31.3)	33 (41.3)	371 (30.6)	0.05
Asthma⁶, n (%)	194 (15.0)	13 (16.3)	181 (14.9)	0.75
Cesarean delivery, n (%)	400 (30.9)	30 (37.5)	370 (30.5)	0.19
Preterm delivery at gestational age <37 weeks, n (%)	128 (9.9)	11 (13.8)	117 (9.7)	0.23
SARS-CoV-2 PCR tested during pregnancy⁷, n (%)	1,109 (85.8)	72 (90.0)	1,037 (85.5)	0.26
Positive, n (% tested)	64/1,109 (5.8)	46/72 (63.9)	18/1,037 (1.7)	<0.001
Duration (in hours) between serology test and first positive PCR test ⁸ , median (IQR)	0.3 (0, 345.3)	75.4 (0, 659.3)	0 (-0.1, 0.2)	0.007
Live-born infant, n (%)	1,282 (99.2)	79 (98.8)	1,203 (99.2)	0.51

Footnotes: ¹Seropositivity was based on either IgG or IgM level >0.48 arbitrary units.

²Difference in maternal age was tested using Mann-Whitney U test, differences in proportion for all other characteristics were tested using χ^2 tests or Fisher's exact tests as appropriate. For race/ethnicity and pre-pregnancy BMI, difference was tested at each level of the characteristic (e.g. Black women compared to non-Black women). ³Race/ethnicity was unknown for 2 seropositive and 26 seronegative women; race was abstracted from documentation at time of admission and in clinical practice is usually self-reported. ⁴Health insurance was missing for 2

seropositive women; health insurance was abstracted from documentation in the medical record of the insurance used during admission for delivery; ‘Public payor’ includes Medicaid, Medicare and Veterans Affairs Community Care; ‘Uninsured’ includes self-pay and Charity Care. ⁵Pre-pregnancy BMI was missing for 2 seropositive and 12 seronegative women; pre-pregnancy BMI was abstracted from documentation in the medical record or patient’s self-reported entry in birth registration. ⁶Diagnoses were based on delivery admission International Classification of Diseases, 10th revision diagnosis codes for diabetes (O24, E08-E13, Z79.4), hypertension (O10, O11, O13-O16, I10-I13, I15) and asthma (J45). ⁷Included tests done anytime during pregnancy up to discharge from delivery admission. ⁸Difference calculated by subtracting the date and time sample for PCR was collected from the date and time sample for serology was collected. A negative number indicates PCR sample collected after serology sample. BMI, body mass index; IQR, interquartile range; PCR, polymerase chain reaction; SARS-CoV-2, severe acute respiratory syndrome coronavirus 2.

Table 2. Relative levels of SARS-COV-2 IgG and IgM in serum collected from seropositive pregnant women (n = 80).

Patient Number	IgG levels (arbitrary units)	IgM levels (arbitrary units)
1	<0.20	0.57
2	<0.20	0.99
3	0.29	0.75
4	0.31	1.09
5	0.50	0.21
6	0.50	1.04
7	0.50	2.28
8	0.54	0.35
9	0.60	0.65
10	0.63	<0.20
11	0.66	1.01
12	0.75	<0.20
13	0.83	<0.20
14	0.86	<0.20
15	0.97	0.43
16	1.07	0.49
17	1.12	<0.20
18	1.70	0.56
19	1.75	0.69
20	1.85	0.33
21	1.87	0.29
22	1.97	<0.20
23	2.16	0.30
24	2.34	0.36
25	2.35	1.78
26	2.45	1.44
27	2.58	0.98
28	2.73	0.30
29	2.75	2.22
30	2.85	0.91
31	2.94	0.39
32	2.99	2.90
33	3.12	1.10
34	3.20	0.28
35	3.32	0.21

36	3.34	1.11
37	3.38	1.40
38	3.42	0.58
39	3.46	<0.20
40	3.54	<0.20
41	3.55	1.40
42	4.40	<0.20
43	4.75	0.96
44	4.88	0.94
45	5.25	3.37
46	5.43	2.41
47	5.46	1.77
48	5.50	12.25
49	5.59	3.43
50	5.87	6.52
51	5.97	3.28
52	6.91	6.44
53	6.94	<0.20
54	7.40	3.27
55	8.60	3.71
56	8.67	0.98
57	9.56	12.60
58	9.59	1.26
59	9.80	1.32
60	10.23	4.40
61	11.28	25.33
62	11.47	0.81
63	11.52	7.90
64	12.45	4.63
65	13.97	1.45
66	14.44	1.56
67	14.46	8.29
68	15.99	2.64
69	18.10	0.63
70	18.76	3.99
71	19.56	1.82
72	20.47	19.70
73	22.32	3.32
74	22.52	8.49
75	31.26	3.67
76	32.85	22.02
77	44.26	17.59
78	44.46	3.27

79	83.77	8.07
80	99.10	11.87

5

10

15

20

Figure Legends

Figure 1. Geographical distribution of women tested for SARS-CoV-2 antibodies. Most serum specimens analyzed were from women living in areas within or immediately bordering the city of Philadelphia. Location of birth hospitals where serum samples were collected are shown as red crosses.

Figure 2. Serum SARS-CoV-2 antibody levels in COVID-19 pandemic and pre-pandemic individuals. (A-B) Relative levels of SARS-CoV-2 IgG (A) and IgM (A) in serum collected before the COVID-19 pandemic (n = 834) and serum collected from COVID-19 recovered donors (n = 15). (C-D) Relative levels of SARS-CoV-2 IgG (C) and IgM (D) in serum collected from pregnant women from 2009-2012 (n = 140) and from April 4-June 3, 2020 (n = 1,293). Dashed lines indicate 0.48 arbitrary units, which was used to distinguish positive versus negative samples (see Methods). Serum samples that were below the cutoff for seropositivity were assigned an antibody level of 0.40 arbitrary units.

Figure 1

Count of Specimens by ZIP Code

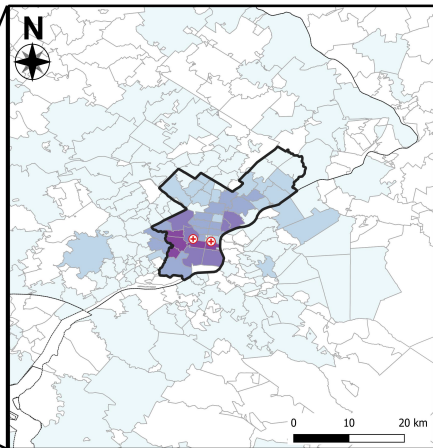
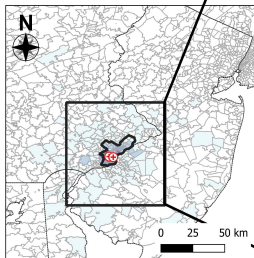


Figure 2

