

## **‘Trained immunity’ from *Mycobacterium spp.* exposure or BCG vaccination and COVID-19 outcomes**

**Samer Singh, PhD<sup>1,2#</sup>; Rajendra P. Maurya, MBBS, MD, PhD<sup>3</sup>; Rakesh K. Singh, PhD<sup>4</sup>**

<sup>1</sup>Centre of Experimental Medicine & Surgery, Institute of Medical Sciences, Banaras Hindu University, Varanasi – 221005, India

<sup>2</sup>Department of Microbial Biotechnology, Panjab University, Chandigarh – 160014, India

<sup>3</sup>Regional Institute of Ophthalmology, Institute of Medical Sciences, Banaras Hindu University, Varanasi – 221005, India

<sup>4</sup>Department of Biochemistry, Institute of Science, Banaras Hindu University, Varanasi – 221005, India

# **Corresponding Author’s E-mail:** [samer.singh10@bhu.ac.in](mailto:samer.singh10@bhu.ac.in); [samer@pu.ac.in](mailto:samer@pu.ac.in); **Tel.:** +91-9161111173

### **ABSTRACT:**

Protective variables for COVID-19 are unknown. ‘Trained immunity’ of the populace as a result of mandatory BCG immunization policy implementation by countries has been suggested as one of the factors responsible for the differential impact of COVID-19 on different countries. Several trials are underway to evaluate the potential protective role of BCG vaccination in COVID-19. However, the lack of clarity on the use of appropriate controls concerning ‘trained immunity’ has been a cause of concern leading to more confusion as exemplified by a recently concluded trial in Israel that failed to find any correlation. Whereas, when we analyze the COVID-19 data of European countries without any mandatory BCG vaccination policy but with similar age distribution, comparable confounding variables, and the stage of the pandemic, the prevalence of *Mycobacterium spp.* (including BCG vaccine) exposure of the populations is consistently negatively correlated with COVID-19 infections per million population at all the time points evaluated [ $r(20)$ : -0.5511 to -0.6338; p-value: 0.0118 to 0.0027]. The results indicate that the on-going and future studies evaluating the effect of BCG vaccination on COVID-19 outcomes should consider the inclusion of ‘controls’ for underlying ‘trained immunity’ prevalence or that resulting from the intervention (BCG vaccine) in such trials to arrive at more dependable conclusions.

**Key Words:** BCG vaccine; COVID-19; Europe; Latent Tuberculosis Infection; SARS-CoV-2; *Mycobacterium spp.*; Trained Immunity

## INTRODUCTION:

The implementation of mandatory BCG vaccination policy by countries in the past and the BCG immunization coverage of the populations have been associated with the lower COVID-19 cases and mortality. However, the confounding variables among countries such as the stage of the outbreak, population age distribution, health infrastructure, management practices, the testing/screening, and reporting guidelines, etc. make the comparisons tenuous[1,2]. Since the 'trained immunity' status conferred by BCG vaccination in childhood wanes rapidly within years in the absence of 'booster' *Mycobacterium spp.* exposures[3], the prevalent actual 'trained immunity' of the population could be a better evaluable predictive parameter of populations' response to COVID-19 infections, if any, rather than relying on BCG vaccination in the childhood or the national policy as recently reported in JAMA by Hamiel and colleagues[4].

Tuberculin Sensitivity Test (TST) combined with Interferon Gamma Release Assay (IGRA) is generally used to assess the presence of immune response against *Mycobacteria spp.* (environmental or BCG vaccine). In the absence of IGRA positivity, it is referred to as 'Latent Tuberculosis Infection' (LTBI) broadly signifying the absence of tuberculosis disease but the presence of active immunity against the pathogen. As about 1-5% of the LTBI positive individuals could develop Tuberculosis in their lifetime due to either subsequent infection after the 'trained immunity' wanes or when the immunity is compromised for any reason (e.g., HIV infection, cancer, immunosuppressant therapy) this 'LTBI' nomenclature has been retained though not without causing confusion and general aversion of its use as a measure of 'trained immunity'. We reason, if indeed 'trained immunity' status could help reduce infections in a population, the estimated prevalence of Latent Tuberculosis Infection (%LTBI) of resident populations would more closely correlate with COVID-19 infection and mortality rates. The European countries with no mandatory BCG vaccination policy, comparable medical infrastructure, mobility, exposure to SARS-CoV-2, and other confounding variables, currently at a similar stage of epidemic-curve but differential 'trained immunity' status as reflected in %LTBI offer an excellent opportunity to evaluate such assertion.

## METHODS:

The populations from 20 European countries with a differential prevalence of %LTBI[5] (published by the 'Institute for Health Metrics and Evaluation (IHME)' 2018) and comparable confounding variables, including the stage of the pandemic (infections peak) (Table 1) are assessed for any correlation with COVID-19 cases and mortality data without any exclusion criterion (e.g., age, sex, ethnicity) at different stages, *i.e.*, 8 April, 12 May, and 26 May 2020 from <https://www.worldometers.info/coronavirus/>[6] of the ongoing pandemic, as done previously for Vitamin D [7].

## RESULTS:

The 'trained immunity' prevalence correlates of the populations (i.e., %LTBI) indicates a strong correlation with COVID-19 infections (Table 1). The analysis of the COVID-19 data reveals a consistently negative covariation of the cases per million with population's %LTBI at all the time points evaluated [ $r(20)$ : -0.5511 to -0.6338; p-value: 0.0118 to 0.0027] both pre- and post-infections peak [8 April to 26 May 2020], whereas the negative covariation of deaths per million population observed [ $r(20)$  - 0.2836 to -0.3283] remained insignificant (p-values >0.05) (Table 1), similar to previously observed by us[1]. See Figure 1 for the potential predictive correlative inference of the data on May 26, 2020.

## DISCUSSION:

In the differentially 'trained immunity' populations of European countries, the COVID-19 cases per million population negatively correlate with the %LTBI prevalence of the population at each analyzed stage of the pandemic. However, an insignificant negative correlation is observed with deaths per million populations as would be expected with individuals/populations without sufficient 'trained immunity' being vulnerable to getting infected.

The strength of the assertion lies in the large affected study population, i.e., 1,413,367 COVID-19 patients (about 25% of total worldwide on 26.05.2020)[6]; representing 20 different 'trained immunity' level (%LTBI prevalence) groups/populations from countries without a mandatory BCG vaccination policy; comparable health infrastructure, screening and reporting guidelines along with similar age and sex distribution and other confounding variables. The correlation analysis consistently indicates the same association at all 3 different time points of the epidemic curve evaluated. In the light of observation presented, it may be suggested that ongoing trials/studies evaluating the effect of BCG vaccination on COVID-19 infections[2], including the one recently concluded in Israel and reported in JAMA[4] could provide more objective conclusions on inclusions of the estimates about the 'trained immunity' of study participants/ populations.

Dedicated studies using the available patient records or epidemiological surveys backed by follow-up clinical trials with suitable controls for the 'trained immunity' correlates are advisable to assess the biological significance of the observed correlation and arrive at a more meaningful conclusion about BCG vaccination conferred 'trained immunity' and COVID-19 control.

**Acknowledgment:** The general funding support by Banaras Hindu University to the laboratory of SS is acknowledged.

**Funding:** No specific source of funding was utilized for the current study.

**Compliance with ethical standards**

**Conflict of interest:** There is no conflict of interest to disclose.

**Ethical statement:** The study complied with the existing ethical standards.

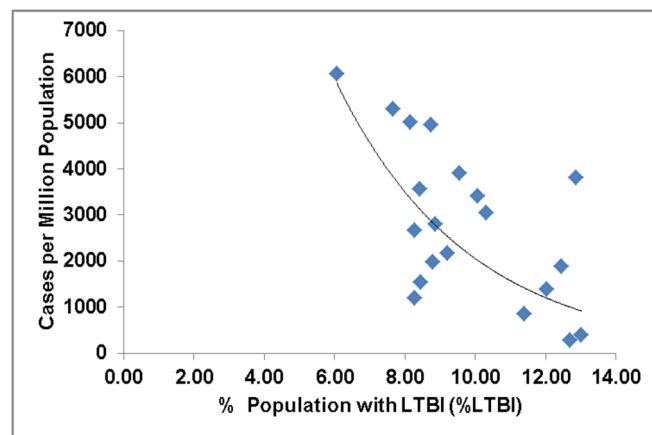
## References:

1. Singh S. BCG Vaccines May Not Reduce Covid-19 Mortality Rates. medRxiv 2020.04.11.20062232; doi: <https://doi.org/10.1101/2020.04.11.20062232>
2. O'Neill LAJ, Netea MG. BCG-induced trained immunity: can it offer protection against COVID-19?. Nat Rev Immunol 2020; 20: 335–337. <https://doi.org/10.1038/s41577-020-0337-y>
3. Rakshit S, Ahmed A, Adiga V et al. BCG revaccination boosts adaptive polyfunctional Th1/Th17 and innate effectors in IGRA+ and IGRA– Indian adults. JCI Insight 2019; 4(24): e130540. <https://doi.org/10.1172/jci.insight.130540>
4. Hamiel U, Kozer E, Youngster I. SARS-CoV-2 Rates in BCG-Vaccinated and Unvaccinated Young Adults. JAMA. 2020; 323(22): 2340-2341. doi:10.1001/jama.2020.8189
5. Institute for Health Metrics and Evaluation (IHME) (2018) Global Burden of Disease Collaborative Network. Global Burden of Disease Study 2017 (GBD 2017) Results. Seattle, United States
6. Worldometer. COVID-19 Coronavirus Pandemic. <https://www.worldometers.info/coronavirus/> (Accessed May 28, 2020)
7. Singh S, Kaur R, Singh RK. Revisiting the role of vitamin D levels in the prevention of COVID-19 infection and mortality in European countries post infections peak. Aging Clin Exp Res 2020 (in press) doi: 10.1007/s40520-020-01619-8

**Table 1:** COVID-19 (SARS-CoV-2) infections in European countries with different prevalence of Latent Tuberculosis Infection (% LTBI) and the Correlation Analysis

SARS-COV-2 INFECTION (COVID-19) CASES & % LTBI IN EUROPEAN COUNTRIES							
	Most countries before infections peak		All countries post infections peak				
	8 April 2020		12 May 2020		26 May 2020		
Countries	Cases per Million Pop.	Deaths per Million Pop.	Cases per Million Pop.	Deaths per Million Pop.	Cases per Million Pop.	Deaths per Million Pop.	% LTBI
Spain	3137	314	5735	572	6060	580	6.06
Iceland	4736	18	5278	29	5290	29	7.67
Ireland	1230	48	4685	297	5015	327	8.14
Belgium	2019	193	4612	751	4959	806	8.75
UK	895	105	3286	472	3909	546	9.55
Italy	2306	292	3636	508	3813	545	12.87
Switzerland	2686	103	3506	213	3557	221	8.42
Sweden	834	68	2641	322	3412	409	10.07
Portugal	1289	37	2715	112	3040	132	10.33
France	1671	167	2718	408	2800	437	8.86
Netherlands	1199	131	2497	318	2661	342	8.29
Germany	1309	25	2060	91	2164	101	9.20
Denmark	933	38	1815	92	1974	97	8.81
Turkey	453	10	1657	46	1884	52	12.46
Norway	1123	19	1500	41	1547	43	8.46
Estonia	893	18	1312	46	1383	49	12.03
Finland	449	7	1080	49	1196	56	8.28
Czechia	488	9	763	26	845	30	11.41
Hungary	93	6	340	44	390	52	13.03
Slovakia	125	0.4	267	5	277	5	12.70
Average	1393.40	80.42	2605.15	222.10	2808.80	242.95	9.77
STDEV	1129.98	94.61	1600.99	221.41	1681.89	238.78	2.00
CORRELATION ANALYSIS							
Cases Per Million Pop. vs %LTBI	r(20): -0.5511 p – value: 0.0118		r(20): -0.6338 p – value: 0.0027		r(20): -0.6194 p – value: 0.0036		
Deaths Per Million Pop. vs %LTBI	r(20): - 0.2836; p – value: 0.2256		r(20): -0.3283; p – value: 0.1576		r(20): -0.3088; p – value: 0.1853		

Note: The values rounded off to the indicated decimal places.



**Figure 1. The trained immunity prevalence (%LTBI) of European populations vs COVID-19 cases per million**