

Differential DNA methylation landscape in skin fibroblasts from African Americans with systemic sclerosis

DeAnna Baker Frost¹, Willian da Silveira², E. Starr Hazard³, Ilia Atanelishvili¹, Robert C. Wilson⁴, Jonathan Flume¹, Kayleigh L. Day⁵, James C. Oates^{1,6}, Galina S. Bogatkevich¹, Carol Feghali-Bostwick¹, Gary Hardiman², Paula S. Ramos^{1,7}

¹Department of Medicine, Division of Rheumatology and Immunology, Medical University of South Carolina, Charleston, South Carolina, USA

²School of Biological Sciences, Institute for Global Food Security, Queens University Belfast, Belfast, United Kingdom

³Computational Biology Resource Center, Medical University of South Carolina, Charleston, South Carolina, USA

⁴Department of Pathology and Laboratory Medicine, Medical University of South Carolina, Charleston, South Carolina, USA

⁵Stevenson University, Stevenson, Maryland, USA

⁶Rheumatology Section, Ralph H. Johnson VA Medical Center, Charleston, South Carolina, USA

⁷Department of Public Health Sciences, Medical University of South Carolina, Charleston, South Carolina, USA

ABSTRACT

Objective. The etiology and reasons underlying the ethnic disparities in systemic sclerosis (SSc) remain unknown. African Americans are disproportionately affected by SSc, yet underrepresented in research. The aim of this study was to comprehensively investigate the association of DNA methylation levels with SSc in dermal fibroblasts from patients of African ancestry.

Methods. Reduced representation bisulfite sequencing (RRBS) was performed on primary cultured dermal fibroblasts from 15 SSc patients and 15 controls of African ancestry, and over 3.8 million CpG sites were tested for differential methylation patterns between cases and controls. Gene set enrichment (GSEA) and gene ontology (GO) analyses were computed to elucidate the underlying biological processes. Quantitative PCR (qPCR) was performed to assess correlations between DNA methylation changes and gene expression levels of top candidate genes.

Results. Skin fibroblasts from African American patients exhibited widespread reduced DNA methylation. Differentially methylated CpG sites were most enriched in introns and intergenic regions, while depleted in 5' UTR, promoters, and CpG islands. Seventeen genes and eleven promoters showed significant differential methylation, mostly in non-coding RNA genes and pseudogenes. GSEA and GO enrichment analysis revealed enrichment of immune, metabolism, cell development, and cell signaling pathways, including those related to interferon signaling and mesenchymal differentiation. The hypomethylation of *DLX5* and *TMEM140* was accompanied by these genes' overexpression, while for the lncRNA *MGC12916*, it was accompanied by its under-expression in patients.

Conclusion. These data show that differential methylation occurs in dermal fibroblasts from African American patients with SSc and identifies novel coding and non-coding genes.

Keywords: Systemic sclerosis; African American; DNA methylation; genome; skin fibroblasts.

Correspondence to Dr. Paula S. Ramos, Division of Rheumatology & Immunology, Department of Medicine, Medical University of South Carolina, 96 Jonathan Lucas Street, MSC637, Charleston, SC 29425, Telephone: 843-872-7081, Fax: 843-792-7121, Email: ramosp@musc.edu.

INTRODUCTION

Systemic sclerosis (SSc or scleroderma) is a multisystem, connective tissue disease characterized by cutaneous and visceral fibrosis, immune dysregulation, and vasculopathy. Patients are commonly classified into two main subsets: limited cutaneous SSc (lcSSc) and diffuse cutaneous SSc (dcSSc), with dcSSc having a worse prognosis.¹ Relative to individuals of European ancestry, individuals of African ancestry are more likely to develop SSc, to be diagnosed with dcSSc, and to experience higher disease severity, greater morbidity, reduced survival, and earlier death.²⁻⁹ This higher disease burden in African Americans is not fully explained by differences in socioeconomic status or access to health care.^{9,10}

The etiology of SSc and the factors underlying its ethnic disparities remain elusive. Genetic and epigenetic studies conducted mostly in individuals of European ancestry uncovered multiple loci associated with SSc.¹¹ A role for DNA methylation in SSc is supported by a X chromosome gene methylation analysis of peripheral blood mononuclear cells,¹² quantification of global methylation in whole blood,¹³ as well as genome-wide DNA methylation analyses of dermal fibroblasts,¹⁴ whole blood,¹⁵ and CD4⁺ T cells.¹⁶ Different ancestral populations exhibit DNA methylation differences¹⁷⁻²⁴ that are partially explained by their distinct genetic ancestry, thus environmental factors not captured by genetic ancestry are significant contributors to variation in methylation.¹⁹

In order to understand the pathogenesis of SSc in patients of African ancestry, we assessed DNA methylation profiles of dermal fibroblasts from African American patients and controls by RRBS, which has high sensitivity and specificity to detect changes in DNA methylation in genes, promoters, CpG islands, and repetitive regions.^{25,26} We then integrated the data with gene expression of the top differentially methylated genes from the same subjects. This study is the first to unveil the genome-wide patterns of differential methylation in skin fibroblasts from African American patients with SSc.

METHODS

Subjects

A total of 15 SSc cases and 15 healthy controls were recruited for this study. All participants were self-reported African American and patients met the 2013 ACR/EULAR classification criteria for SSc. Cases and controls were age-balanced within 5 years. This study was approved by the IRB at the Medical University of South Carolina.

Primary dermal fibroblast isolation and culture

Primary dermal fibroblasts were isolated and cultured as described.²⁷ Cells were cultured for 3 passages, then DNA and RNA were isolated using DNeasy and RNeasy kits (Qiagen, Germantown, MD) following the manufacturer's protocols.

Reduced representation bisulfite sequencing (RRBS)

RRBS was performed using the Ovation® RRBS Methyl-Seq System 1–16 (NuGEN Technologies, Inc., San Carlos, CA) following the manufacturer's procedure. We generated DNA methylation data for over 5 million CpGs in each sample and between 10x to 40x coverage in CpG sites.

Genome-wide DNA methylation data analysis

Alignment and methylation calling were performed using Bismarck v0.16.3 and the GRCh37/hg19 reference genome.²⁸ Data was filtered, normalized, and analyzed with RnBeads v1.6.1.²⁹ Differential methylation analysis was conducted at CpG, promoter, and gene levels (including RNA, pseudo-, and protein-coding genes).²⁹ Genes and promoters were defined by Ensembl and CpG islands were defined as on the CpG island track of the UCSC Genome Browser. As implemented in RnBeads, CpG site *p*-values were computed using the linear models in the limma package. Genes, promoters and CpG islands were ranked based on the RnBeads' Combined Score approach.²⁹

Genomic annotation enrichment analysis

To annotate the position of each CpG to the corresponding genomic location, the *annotatePeaks.pl* program of Homer³⁰ was used. CpGs were annotated to promoter, transcription termination site (TTS), exon, intron, 5' UTR exon, 3' UTR exon, intergenic, CpG island, repeat elements, and other detailed annotations. To investigate the distribution of differentially methylated CpGs (DMC) in different genomic locations, all CpGs that met an FDR-adjusted p -value < 0.4 were used to compare their localization in different genomic locations as provided by of Homer's annotations³⁰. Odds ratio (OR), 95% confidence intervals (CI), and p -values were computed against the general distribution of the 3,870,251 CpGs of our dataset using GraphPad Prism.

Gene set enrichment analysis (GSEA)

GSEA was performed to determine whether a priori defined sets of genes (e.g. pathways) are significantly enriched in the list of genes ranked by their correlation with the disease. The full ranked lists of genes and promoters generated by RnBeads' Combined Score approach²⁹ were used as input to GSEA Desktop v3.0.^{31,32} The genes were ranked by their differential methylation between cases and controls (hyper- and hypomethylated), and the Reactome Pathway Knowledgebase (<https://reactome.org>)³³ was used as the gene set. An enrichment score statistic represents the enrichment of Reactome pathways in the genes that are hyper- or hypomethylated in patients, and the significance of the pathway enrichment score is estimated by an empirical phenotype-based permutation test procedure.^{31,32} The threshold for statistical significance was defined as $FDR \leq 0.25$.^{31,32}

Gene ontology (GO) enrichment analysis

Enrichment analysis for GO terms associated with the top-ranking differentially methylated genes and promoters was performed using RnBeads v1.6.1.²⁹ GO enrichment analysis of biological process (BP) was conducted on each of the 100 hypo- and hypermethylated genes and promoters. Enrichment of GO BP terms associated with the top ranking genes and promoters was determined by a hypergeometric test implemented in RnBeads.²⁹

Gene expression analysis

cDNA was prepared using Superscript IV First Strand synthesis system (ThermoFisher, Waltham, MA) from 1 μ g of isolated RNA. qPCR was performed using Taqman Real-Time PCR master mix (Applied Biosystems, Foster City, CA). All samples were run in duplicate using Applied Biosystems Real-Time PCR System and analyzed using StepOne Plus Applied Biosystems software. Gene quantification cycle values were normalized to B2M expression using the $\Delta\Delta CT$ method to obtain relative cell equivalents. All primers were purchased from ThermoFisher Scientific (Waltham, MA). Statistical significance was determined using the Mann-Whitney test and defined as p -value ≤ 0.05 .

RESULTS

Subject demographics

The clinical and demographic characteristics of the volunteer African ancestry SSc patients and healthy controls are summarized in table 1. Most patients were female with dcSSc and no concomitant rheumatic disease.

Table 1. Demographic and Clinical Characteristics of Study Participants

	Patients (n=15)	Controls (n=15)
Age at enrollment (mean \pm SD)	44.4 \pm 9.7	45.6 \pm 9.9
Female, n (%)	10 (67%)	12 (80%)
dcSSc, n (%)	14 (93%)	NA
ssSSc, n (%)	1 (7%)	NA

Raynaud's Phenomenon, n (%)	15 (100%)	NA
Disease duration (mean \pm SD)	5.3 \pm 5.2	NA
mRSS (mean \pm SD) ¹	18.6 \pm 9.1	NA
ILD, n (%)	3 (20%)	NA
PH/PAH, n (%)	6 (40%)	NA
Overlap SLE, n (%)	2 (13%)	NA
Anti-topoisomerase I, n (%) ²	5 (46%)	NA
Anti-RNA polymerase III, n (%) ³	1 (11%)	NA
Immunosuppressive medications, n (%)	10 (67%)	NA
Smoker at enrollment, n (%) ⁴	1 (7%)	1 (7%)

SSc: systemic sclerosis; dcSSc: diffuse cutaneous SSc; ssSSc: limited SSc; mRSS: modified rodnan skin score; ILD: interstitial lung disease; PH/PAH: pulmonary hypertension/pulmonary arterial hypertension; SLE: systemic lupus erythematosus. ¹Assessed for all patients with dcSSc at enrollment or within 3 months (for 3 patients); ²Measured for 11 (73%) of patients at enrollment or within 1 year (1 patient); ³Measured for 9 (60%) of patients at enrollment or within 1 year (3 patients); ⁴Disclosed for all patients and 13 (87%) controls.

Differentially methylated sites and genes

Over 3.8 million CpG sites were tested for differential methylation between SSc cases and controls (supplementary figure S1). Patients exhibited widespread hypomethylation throughout the genome, with over 85% of CpGs that met an FDR-adjusted p -value < 0.4 showing decreased methylation in the cultured skin fibroblasts from the patients compared to the controls. The rationale for the FDR setting was guided by the desire to perform a systems level analysis and include as many CpGs sites as possible. Among the 1,180 DMCs that met an adjusted p -value < 0.4 , there was an

overrepresentation of DMCs in introns (OR = 1.7, $p < 0.0001$), intergenic regions (OR = 1.5, $p < 0.0001$), TTS (OR = 1.5, $p = 0.007$), and short interspersed nuclear elements (SINE) (OR = 1.2, $p = 0.003$) (figure 1 and supplementary table S1). Notably, there was a depletion of DMCs in 5' UTR (OR = 0.2, $p < 0.0001$), promoters (OR = 0.3, $p < 0.0001$), and CpG islands (OR = 0.6, $p < 0.0001$) (figure 1 and supplementary table S1). In most of the genomic regions, the majority of DMCs were hypomethylated in the patients compared to controls. In contrast with other genomic regions, in CpG islands, 71% of the DMCs were more methylated in patients than controls.

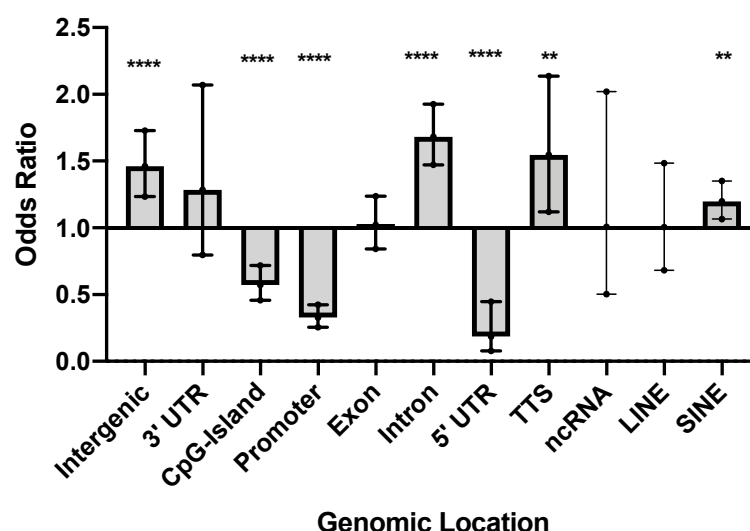


Figure 1. Genomic location of DMC that met an adjusted p -value < 0.4 . Odds ratio (OR), 95% confidence intervals (CI), and p -values were computed against the general distribution of the 3,870,251 CpGs of our dataset using GraphPad Prism. Error bars represent the 95% CI. OR indicate enrichment or depletion of DMCs in each region. transcription termination site (TTS); non-coding RNA (ncRNA); long interspersed nuclear elements (LINE); short interspersed nuclear elements (SINE). * $p \leq 0.05$, ** $p \leq 0.01$, *** $p \leq 0.001$, **** $p \leq 0.0001$.

The Combined Score approach implemented in RnBeads²⁹ was used to identify differentially methylated genes, promoters and CpG islands. A total of 197 (out of 30,771) genes, 112 (out of 29,720) promoters, and 97 (out of 24,117) CpG islands were identified and ranked using this approach. The gene and promoter regions identified are shown in table 2. A total of 9 CpG islands, 17 genes (including RNA, pseudo- and protein-coding genes), and 11 promoters showed significant differential methylation levels between cases and controls at the gene level. The top differentially

methylated genes constitute mostly non-coding RNA genes (42%), followed by pseudogenes (27%), then protein-coding genes (19%) (table 2). Among the protein-coding genes, cytidine deaminase (CDA), a marker of monocyte/macrophage differentiation,³⁴ is involved in innate immunity pathways. Atypical chemokine receptor 4 (ACKR4) is involved in chemokine signaling.³⁵ Distal-less homeobox 5 (DLX5) is a transcription factor involved in bone development and morphogenesis of connective tissue.³⁶ The functions of the remaining genes are currently unknown.

Table 2. Gene and promoter regions below the Combined Score Cutoff

Symbol	Gene type	Chr	Position (kb)	MMD	N sites	Rank
Genes						
RPL30P7	Pseudogene	5	10489-10489	0.31	1	25
MGC12916	RNA gene (lncRNA)	17	14207-14209	0.23	31	60
LINC01227	RNA gene (ncRNA)	16	80601-80607	-0.21	1	80
ENSG00000255342	Uncategorized (lncRNA)	11	123007-123007	0.22	11	81
ENSG00000227930	RNA gene	7	23931-23937	-0.2	2	84
ENSG00000230104	Uncategorized (lncRNA)	2	173539-173540	0.22	1	131
LOC102724927	RNA gene (ncRNA)	16	3998-4000	-0.14	5	132
ENSG00000229472	-	20	32669-32670	0.18	2	133
MIR5587	RNA gene (miRNA)	16	585-585	0.22	2	141
LOC105379365	RNA gene (ncRNA)	8	34032-34042	0.17	2	146
LOC402634	Pseudogene	7	2433-2434	0.17	2	163
NEK2P4	Pseudogene	2	131935-131937	0.2	7	173
NCRNA00250	RNA gene (ncRNA)	8	135850-135855	-0.19	1	180
DLX5	Protein coding	7	96650-96654	0.17	114	192
LOC101929882	RNA gene (ncRNA)	2	10179-10181	0.13	2	194
FAM180B	Protein coding	11	47608-47611	0.17	6	195
LOC100652792	Pseudogene	15	93306-93307	0.16	4	197
Promoters						
CDA	Protein coding	1	20914-20916	-0.26	1	7
TAF5LP1	Pseudogene	17	33824-33826	-0.22	8	23

LINC00619	RNA gene (ncRNA)	10	44339-44341	-0.25	1	29
RPL30P7	Pseudogene	5	10487-10489	-0.31	1	45
SNORA25	RNA gene (snoRNA)	13	106549-106551	-0.23	3	72
ENSG00000241456	RNA gene	7	151123-151125	0.17	3	74
ENSG00000229974	-	7	134832-134834	0.18	2	94
TMEM140	Protein coding	7	134831-134833	0.18	2	94
LOC100420018	Pseudogene	11	35990-35992	0.37	1	101
ACKR4	Protein coding	3	132315-132317	-0.23	1	110
ENSG00000255342	Uncategorized (lncRNA)	11	123007-123009	-0.22	11	112

Genes and promoters are ranked based on the RnBeads' Combined Score approach;²⁹ the rank is computed as the maximum (i.e. worst) of 3 ranks: a) the mean difference in means across all sites in a region of the two groups being compared, b) the mean of quotients in mean methylation, and c) a combined p-value calculated from all site p-values in the region. Chr: chromosome; MMD: Mean Methylation Difference; N: number.

Gene set enrichment analysis (GSEA)

To gain insight into the most differentially methylated genes and promoters, GSEA^{31,37} was conducted to predict biologically relevant Reactome pathways.³³ Table 3 lists all Reactome pathways with an FDR ≤ 0.25 . This analysis highlighted an immune pathway (immunoregulatory interactions between a lymphoid and a non-lymphoid cell) to be overrepresented in the set of hypermethylated

genes, while metabolism pathways (glucuronidation, chondroitin sulfate dermatan sulfate metabolism) showed enrichment among hypomethylated genes. Pathways involved in cell development (regulation of beta cell development and gene expression) and cell signaling (gap junction trafficking, activation of kainate receptors upon glutamate binding, G beta:gamma signalling), were also enriched among hypomethylated genes.

Table 3. Summary of Gene Set Enrichment Analysis results

Entity	Reactome pathway name	Size	ES	NES	p-val	FDR q-val
Genes	Glucuronidation	15	-0.84	-2.13	<0.001	<0.001
	Chondroitin sulfate dermatan sulfate metabolism	42	-0.57	-1.76	0.002	0.088
	Gap junction trafficking	25	-0.59	-1.65	0.002	0.228
	G beta: gamma signalling through PI3Kgamma	24	-0.59	-1.65	0.003	0.191
	Activation of kainate receptors upon glutamate binding	29	-0.55	-1.60	0.008	0.236
	Immunoregulatory interactions between a lymphoid and a non-lymphoid cell	58	0.31	1.49	<0.001	0.246
Promoters	Regulation of beta cell development	27	-0.64	-1.92	<0.001	0.022
	Regulation of gene expression in beta cells	17	-0.64	-1.75	0.002	0.200
	Immunoregulatory interactions between a lymphoid and a non-lymphoid cell	33	0.53	2.20	<0.001	0.007

Pathways with a false discovery rate (FDR) ≤ 0.25 are shown. Size, number of pathway genes available for analysis; ES, enrichment score for pathway; NES, normalized enrichment score for pathway.

GO enrichment analysis

To further aid in interpretation of the differentially methylated genes and promoters, we performed enrichment analysis for GO terms associated with the top-ranking genes and promoters in table 4. Multiple development and morphogenesis, immune, and metabolic related terms show enrichment. While hypomethylated

genes are enriched for GO terms associated with interferon (IFN) signaling (type I IFN signaling pathway, $p=8.0E-04$; response to type I IFN, $p=8.0E-04$), hypermethylated genes are enriched for GO terms associated with mesenchyme and epithelial development and cell differentiation (epithelial to mesenchymal transition, $p=1.0E-04$; nephron tubule formation, $p=1.0E-04$;

mesenchymal cell differentiation $p = 1.0E-04$)
(table 4).

Table 4. Enriched GO terms ($p \leq 0.005$) among hypo- and hypermethylated regions			
ID	p-value	Term	Region
Hypomethylated regions			
GO:0060337	8.00E-04	type I interferon signaling pathway	genes
GO:0034340	9.00E-04	response to type I interferon	genes
GO:0070458	2.10E-03	cellular detoxification of nitrogen compound	genes
GO:0018916	2.80E-03	nitrobenzene metabolic process	genes
GO:0060708	2.80E-03	spongiorophoblast differentiation	genes
GO:0032020	4.10E-03	ISG15-protein conjugation	genes
Hypermethylated regions			
GO:0001837	1.00E-04	epithelial to mesenchymal transition	genes
GO:0072079	1.00E-04	nephron tubule formation	genes
GO:0048762	3.00E-04	mesenchymal cell differentiation	genes
GO:0060980	1.00E-03	cell migration involved in coronary vasculogenesis	genes
GO:0048729	1.70E-03	tissue morphogenesis	genes
GO:0035295	1.70E-03	tube development	genes
GO:0048864	1.80E-03	stem cell development	genes
GO:0003218	1.90E-03	cardiac left ventricle formation	genes
GO:0070172	1.90E-03	positive regulation of tooth mineralization	genes
GO:0072272	1.90E-03	proximal/distal pattern formation involved in metanephric nephron development	genes
GO:0072088	2.10E-03	nephron epithelium morphogenesis	genes
GO:0061333	2.20E-03	renal tubule morphogenesis	genes
GO:0060166	2.90E-03	olfactory pit development	genes
GO:0060021	2.90E-03	palate development	genes
GO:0060993	3.20E-03	kidney morphogenesis	genes
GO:0072080	3.20E-03	nephron tubule development	genes
GO:0045893	3.50E-03	positive regulation of transcription, DNA-templated	genes
GO:0003166	3.90E-03	bundle of His development	genes
GO:0072086	3.90E-03	specification of loop of Henle identity	genes
GO:0072513	3.90E-03	positive regulation of secondary heart field cardioblast proliferation	genes
GO:2000653	3.90E-03	regulation of genetic imprinting	genes
GO:1902680	3.90E-03	positive regulation of RNA biosynthetic process	genes
GO:0048598	4.20E-03	embryonic morphogenesis	genes
GO:0051891	4.80E-03	positive regulation of cardioblast differentiation	genes
GO:0072334	1.70E-03	UDP-galactose transmembrane transport	promoters
GO:0035524	3.30E-03	proline transmembrane transport	promoters
GO:0060166	3.30E-03	olfactory pit development	promoters
GO:2000097	3.30E-03	regulation of smooth muscle cell-matrix adhesion	promoters

GO:0001867	5.00E-03	complement activation, lectin pathway	promoters
GO:0015820	5.00E-03	leucine transport	promoters
GO:0019858	5.00E-03	cytosine metabolic process	promoters
GO:0038110	5.00E-03	interleukin-2-mediated signaling pathway	promoters

Enrichment of Biological Process (BP) Gene Ontology (GO) terms associated with the top-ranking 100 hypo- and hypermethylated genes and promoters as determined by a hypergeometric test implemented in RnBeads.³³

Comparison of DNA methylation with previous reports in dermal tissues

The 28 genes and promoters reported in table 2 were compared to results from published genome-wide DNA methylation¹⁴ and gene expression studies³⁸⁻⁴⁸ in cultured dermal fibroblasts or skin biopsies. Of our top genes and promoters, two CpGs in *distal-less homeobox 5* (*DLX5*) were reported as hypermethylated in skin fibroblasts from dcSSc patients,¹⁴ which is consistent with our results.

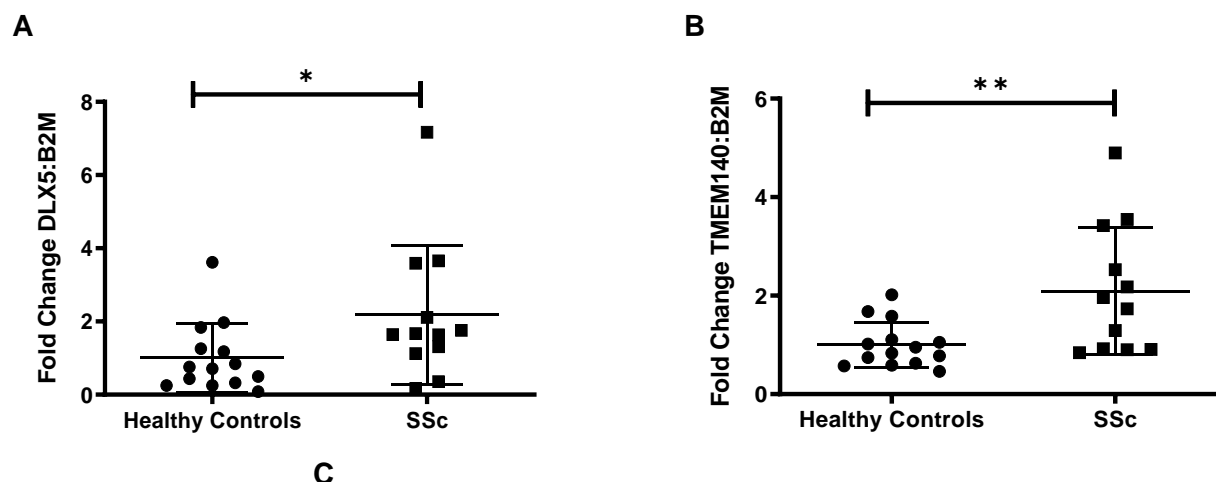
When compared to gene expression profiling studies in cultured dermal fibroblasts or skin biopsies, *DLX5* was reported as under-expressed in patients with SSc,⁴² while *transmembrane protein 140* (*TMEM140*) was reported as overexpressed in patients with SSc,⁴² and correlated with the modified Rodnan skin thickness score (mRSS) in dcSSc patients.⁴⁶

When compared to the genes with compelling evidence of genetic association with SSc,¹¹ none of our top 28 genes has been previously reported. Of note, these genome-wide DNA methylation¹⁴ and gene expression studies³⁸⁻⁴⁸ in skin-related tissues, as well as

genetic association studies,¹¹ were all performed in individuals of mostly European ancestry.

Gene expression of differentially methylated genes

To evaluate the functional effects of DNA methylation on gene expression in our sample of African American subjects, we performed qPCR on the five protein-coding genes (*CDA*, *TMEM140*, *ACKR4*, *DLX5*, *FAM180B*) and three long non-coding (lnc) RNA genes (*MGC12916*, *LOC102724927*, *LOC101929882*). These genes were chosen based on their known functions, an increased number of CpG sites detected (>30), and/or detectable transcripts from primary dermal fibroblasts using the RNA isolation/purification technique outlined in the methods section. Of the eight gene transcripts quantified, *DLX5*, *TMEM140*, and *MGC12916*, showed significant differential expression in cases compared to controls (figure 2). Although these three genes showed hypermethylation, both *DLX5* and *TMEM140* steady state transcript levels were increased, while *MGC12916* steady state transcript levels were decreased in patients compared to controls (figure 2A-C).



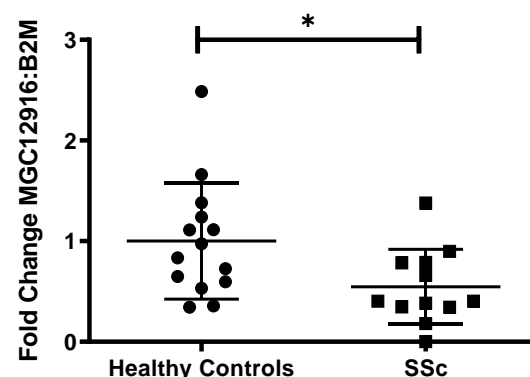


Figure 2. Transcript levels among three differentially expressed genes in AA SSc patients. Among eight genes that were chosen for analysis, three genes demonstrated significantly differentiated expression in AA SSc patients compared to controls. Patient classification detailed on x-axis, while gene transcript level fold change expressed on y-axis. * $p \leq 0.05$, ** $p \leq 0.01$.

DISCUSSION

This is the first study investigating patterns of differential methylation in primary skin fibroblasts from African American patients with SSc. We found widespread reduced DNA methylation in patients compared with healthy controls, consistent with what has been previously reported in skin fibroblasts from SSc patients of mostly European ancestry,¹⁴ and peripheral blood from Black South African patients with SSc.¹³

Our findings show novel, top differentially methylated genes constituted mostly of non-coding RNA genes and pseudogenes. Only three protein-coding genes were amongst the top results: *CDA* and *ACKR4* with known roles in immune pathways, and *DLX5* with roles in cell development and proliferation. *DLX5* was previously reported as hypermethylated in skin fibroblasts from dcSSc patients,¹⁴ which is consistent with our results. However, the previous study analyzed DNA methylation using the HumanMethylation450K array. Our study is based on RRBS which tested eight times more CpGs than those present on the HumanMethylation450K array used in the previous genome-wide study of skin fibroblasts.¹⁴ Thus, these methods are not directly comparable. Because the array contains only 2% of the CpGs we tested,⁴⁹ minimal overlap can be expected. In addition, extensive differences in DNA methylation are known to exist between individuals of African and

European ancestry,¹⁷⁻²⁴ due to both variation in genetic ancestry and environmental factors,¹⁹ with Africans showing higher DNA methylation than Europeans.²⁰ These differences help explain the new findings and minimal overlap with previous reports.

DLX5, *TMEM140*, and *MCG12916* exhibited concomitant differential gene expression in the same primary dermal fibroblasts among the differentially methylated genes. While these genes exhibited hypermethylation, *DLX5* and *TMEM140* showed overexpression, while *MCG12916* showed downregulation in the same individuals. This is not surprising, as the correlation between DNA methylation and gene expression is positive or negative and is tissue or context specific, in that the local DNA sequence and genomic features largely account for local patterns of methylation.⁵⁰⁻⁵² Previous studies report great variation of the quantitative impact of DNA methylation on gene expression among different cell types, with both positive and negative correlations between expression levels and CpG methylation levels.^{20,53-56} Our results show hypomethylation of CpGs was prominent in all regions but CpGs islands, where DMCs were hypermethylated. DMC sites were enriched in introns, intergenic regions, TTS, and SINE, while depleted in 5' UTR, promoters, and CpG islands. Because CpG sites preferentially located in enhancers are reported to mediate gene expression, not in the promoters, this further

supports a modest role of promoters in epigenetic regulatory mechanisms.²⁰

Interestingly, despite the differences in tissue and patient characteristics, *TMEM140* was reported as overexpressed in skin biopsy specimens from patients with SSc,⁴² and correlated with the mRSS in dcSSc patients,⁵⁷ which corroborates our findings. On the other hand, *DLX5* was reported as under-expressed in skin biopsy specimens from patients with SSc,⁴² The different outcomes of gene expression for *DLX5* between the experiments could be the result of measuring gene expression in one cell type vs. across multiple cell types in skin biopsies, as well as underlying ancestral differences in gene expression. Although multiple lncRNAs have been reported as dysregulated in SSc patient tissues,⁵⁸ to our knowledge, this is the first report that *MGC12916* has differential gene methylation and expression in primary dermal fibroblasts from African American patients with SSc.

To elucidate the underlying biological processes associated with SSc, GSEA and GO enrichment analyses were conducted. Among the hypomethylated regions, both GSEA and GO enrichment analysis showed enrichment of immune pathways, with GO analysis showing an enrichment in type I IFN signaling. Patients with SSc have excessive IFN and an IFN signature that correlated to early and more severe disease.⁵⁹⁻⁶² IFN is also pathogenic in SSc, since exogenous exposure to IFN α or IFN β leads to its development.⁶³⁻⁶⁶ The IFN regulatory factor 7 promoter (IRF7) is hypomethylated in SSc peripheral blood mononuclear cells,⁶⁷ supporting the link of IFN signaling and gene hypomethylation in SSc.

Among hypermethylated regions, GSEA showed an enrichment of metabolism, cell development, and cell signaling pathways, and GO enrichment analysis revealed an enrichment in specific pathways related to mesenchyme and epithelial development and cell differentiation. The top enriched GO term among hypermethylated regions, endothelial-mesenchymal cell transition (EMT), is consistent with the current hypothesis that EMT likely influences SSc disease characteristics including endothelial cell dysfunction, dermal fibrosis, and interstitial lung disease.^{68,69} To our knowledge, this is the first reported association between

gene and promoter hypermethylation and mesenchymal cell differentiation in SSc. Thus, our GSEA and GO analyses correlate with previous data regarding known pathways in SSc.

There are limitations to this study. First, although we are the first to analyze patterns of DNA methylation in dermal fibroblasts in African Americans, the sample size is modest. Nevertheless, with 15 SSc patients, it is comparable to previous genome-wide DNA methylation analyses focused on skin fibroblasts ($n = 12$ SSc patients),¹⁴ whole blood ($n = 27$ SSc patients),¹⁵ and CD4+ T cells ($n = 9$ patients),¹⁶ which included primarily individuals of European ancestry. Second, we were not able to collect a new independent cohort of African Americans to validate the results. Given the rarity of SSc, at the time this study was performed, there were no other comparable prospective studies available. Future studies expanded to multiple centers are needed. Third, and inherent to all epigenomic studies, we cannot exclude the possibility of reverse causation, or whether the DNA methylation changes are a cause or an effect of SSc. Future longitudinal studies will elucidate the role of DNA methylation in disease etiology. Fourth, it is possible that the DNA methylation changes are due to genetic variation. We lack genotypic data on these samples, but note that none of the top differentially methylated genes has been previously reported as associated with SSc. We recognize that it is difficult to account for all lifestyle factors that could affect DNA methylation (i.e. diet, physical activity, body weight, smoking, medications, etc.).⁷⁰ Our samples were balanced relative to smoking and age, so that their confounding effects are minimized. Finally, we do not know the role of *DLX5*, *TMEM140*, and *MGC12916* in SSc, but we will utilize gene silencing technology to inhibit expression of these genes in primary dermal SSc fibroblasts to elucidate their function in this cell type.

In summary, we identified multiple DNA methylation sites associated with SSc, including sites with evidence of altered methylation in protein-coding, lncRNA and pseudogenes, and concomitant differential expression in *MGC12916*, *DLX5* and *TMEM140*. Although this cross-sectional study cannot separate causality from response to disease, it identifies DNA

methylation alterations in genes and pathways that are important in SSc. Our findings provide a foundation for further research to determine the functional consequences of the differentially methylated loci. Given the reversible nature of epigenetic marks, these loci might represent attractive targets for the treatment or prevention of autoimmune- and/or fibrotic-related diseases.

Acknowledgements

The authors would like to acknowledge the participants and study coordinator Dr. Carol Lambourne.

Contributors

PSR designed and coordinated the study. JCO coordinated participant recruitment. JF organized the clinical data. IA and GSB processed the samples and extracted nucleic acids. RCW generated the RRBS data. WS, ESH, PSR and GH analyzed the RRBS data. DBF generated the gene expression data. DBF and CFB analyzed the gene expression data. DBF, KLD and PSR wrote the manuscript. All authors were involved in critical review, editing, revision and approval of the final manuscript.

Funding

This study was supported by the US National Institute of Arthritis and Musculoskeletal and Skin Diseases of the National Institutes of Health

(NIH) under Awards Number T32 AR050958 (DBF), K01 AR067280 (PSR), P30 AR072582 (PSR), R03 AR065801 (PSR), P60 AR062755 (PSR, GSB, JCO), K24 AR060297 (CFB), the MUSC Center for Genomic Medicine, and the National Center for Advancing Translational Sciences of the National Institutes of Health under Award Numbers KL2 TR001452 and UL1 TR001450 (DBF). GH acknowledges support from NIH/NIDA 1U01DA045300-01A1, U54MD010706-CHH and start-up funding from Queens University Belfast.

Competing financial interests

None declared.

Patient consent

Obtained.

Ethics approval

IRB at the Medical University of South Carolina.

Provenance and peer review

Not commissioned; externally peer reviewed.

Data sharing statement

Data have been deposited in GEO (Accession code GSE150592). All data are also available from the authors on request.

REFERENCES

1. Silver RM. Clinical aspects of systemic sclerosis (scleroderma). *Ann Rheum Dis* 1991;**50 Suppl 4**:854-861.
2. Mayes MD, Lacey JV, Jr., Beebe-Dimmer J, *et al.* Prevalence, incidence, survival, and disease characteristics of systemic sclerosis in a large US population. *Arthritis Rheum* 2003;**48**:2246-2255.
3. Mendoza F, Derk CT. Systemic sclerosis mortality in the United States: 1999-2002 implications for patient care. *Journal of clinical rheumatology : practical reports on rheumatic & musculoskeletal diseases* 2007;**13**:187-192.
4. Laing TJ, Gillespie BW, Toth MB, *et al.* Racial differences in scleroderma among women in Michigan. *Arthritis Rheum* 1997;**40**:734-742.
5. Mayes MD, Lacey JV, Jr., Beebe-Dimmer J, *et al.* Prevalence, incidence, survival, and disease characteristics of systemic sclerosis in a large US population. *Arthritis Rheum* 2003;**48**:2246-2255.
6. Greidinger EL, Flaherty KT, White B, *et al.* African-American race and antibodies to topoisomerase I are associated with increased severity of scleroderma lung disease. *Chest* 1998;**114**:801-807.
7. Krishnan E, Furst DE. Systemic sclerosis mortality in the United States: 1979-1998. *European journal of epidemiology* 2005;**20**:855-861.
8. McNearney TA, Reveille JD, Fischbach M, *et al.* Pulmonary involvement in systemic sclerosis: associations with genetic, serologic, sociodemographic, and behavioral factors. *Arthritis Rheum* 2007;**57**:318-326.
9. Nietert PJ, Mitchell HC, Bolster MB, *et al.* Racial variation in clinical and immunological manifestations of systemic sclerosis. *J Rheumatol* 2006;**33**:263-268.
10. Morgan ND, Shah AA, Mayes MD, *et al.* Clinical and serological features of systemic sclerosis in a multicenter African American cohort: Analysis of the genome research in African American scleroderma patients clinical database. *Medicine* 2017;**96**:e8980.
11. Angiolilli C, Marut W, van der Kroef M, *et al.* New insights into the genetics and epigenetics of systemic sclerosis. *Nature reviews. Rheumatology* 2018;**14**:657-673.
12. Selmi C, Feghali-Bostwick CA, Lleo A, *et al.* X chromosome gene methylation in peripheral lymphocytes from monozygotic twins discordant for scleroderma. *Clin Exp Immunol* 2012;**169**:253-262.
13. Matatiele P, Tikly M, Tarr G, *et al.* DNA methylation similarities in genes of black South Africans with systemic lupus erythematosus and systemic sclerosis. *Journal of biomedical science* 2015;**22**:34.
14. Altorok N, Tsou PS, Coit P, *et al.* Genome-wide DNA methylation analysis in dermal fibroblasts from patients with diffuse and limited systemic sclerosis reveals common and subset-specific DNA methylation aberrancies. *Ann Rheum Dis* 2015;**74**:1612-1620.
15. Ramos PS, Zimmerman KD, Haddad S, *et al.* Integrative analysis of DNA methylation in discordant twins unveils distinct architectures of systemic sclerosis subsets. *Clinical epigenetics* 2019;**11**:58.
16. Lu T, Klein KO, Colmegna I, *et al.* Whole-genome bisulfite sequencing in systemic sclerosis provides novel targets to understand disease pathogenesis. *BMC medical genomics* 2019;**12**:144.
17. Michels KB, Binder AM, Dedeurwaerder S, *et al.* Recommendations for the design and analysis of epigenome-wide association studies. *Nature methods* 2013;**10**:949-955.
18. Barfield RT, Almlil LM, Kilaru V, *et al.* Accounting for population stratification in DNA methylation studies. *Genetic epidemiology* 2014;**38**:231-241.
19. Galanter JM, Gignoux CR, Oh SS, *et al.* Differential methylation between ethnic sub-groups reflects the effect of genetic ancestry and environmental exposures. *eLife* 2017;**6**.
20. Husquin LT, Rotival M, Fagny M, *et al.* Exploring the genetic basis of human population differences in DNA methylation and their causal impact on immune gene regulation. *Genome biology* 2018;**19**:222.
21. Quach H, Rotival M, Pothlichet J, *et al.* Genetic Adaptation and Neandertal Admixture Shaped the Immune System of Human Populations. *Cell* 2016;**167**:643-656 e617.
22. Gopalan S, Carja O, Fagny M, *et al.* Trends in DNA Methylation with Age Replicate Across Diverse Human Populations. *Genetics* 2017;**206**:1659-1674.
23. Fagny M, Patin E, MacIsaac JL, *et al.* The epigenomic landscape of African rainforest hunter-gatherers and farmers. *Nature communications* 2015;**6**:10047.

24. Heyn H, Moran S, Hernando-Herraez I, *et al.* DNA methylation contributes to natural human variation. *Genome research* 2013;**23**:1363-1372.
25. Gu H, Bock C, Mikkelsen TS, *et al.* Genome-scale DNA methylation mapping of clinical samples at single-nucleotide resolution. *Nature methods* 2010;**7**:133-136.
26. Bock C, Tomazou EM, Brinkman AB, *et al.* Quantitative comparison of genome-wide DNA methylation mapping technologies. *Nature biotechnology* 2010;**28**:1106-1114.
27. Atanelishvili I, Shirai Y, Akter T, *et al.* M10, a caspase cleavage product of the hepatocyte growth factor receptor, interacts with Smad2 and demonstrates antifibrotic properties in vitro and in vivo. *Transl Res* 2016;**170**:99-111.
28. Krueger F, Andrews SR. Bismark: a flexible aligner and methylation caller for Bisulfite-Seq applications. *Bioinformatics* 2011;**27**:1571-1572.
29. Assenov Y, Muller F, Lutsik P, *et al.* Comprehensive analysis of DNA methylation data with RnBeads. *Nature methods* 2014;**11**:1138-1140.
30. Heinz S, Benner C, Spann N, *et al.* Simple combinations of lineage-determining transcription factors prime cis-regulatory elements required for macrophage and B cell identities. *Mol Cell* 2010;**38**:576-589.
31. Subramanian A, Kuehn H, Gould J, *et al.* GSEA-P: a desktop application for Gene Set Enrichment Analysis. *Bioinformatics* 2007;**23**:3251-3253.
32. Subramanian A, Tamayo P, Mootha VK, *et al.* Gene set enrichment analysis: a knowledge-based approach for interpreting genome-wide expression profiles. *Proc Natl Acad Sci U S A* 2005;**102**:15545-15550.
33. Fabregat A, Jupe S, Matthews L, *et al.* The Reactome Pathway Knowledgebase. *Nucleic acids research* 2018;**46**:D649-D655.
34. Kuhn K, Bertling WM, Emmrich F. Cloning of a functional cDNA for human cytidine deaminase (CDD) and its use as a marker of monocyte/macrophage differentiation. *Biochemical and biophysical research communications* 1993;**190**:1-7.
35. Nibbs RJ, Graham GJ. Immune regulation by atypical chemokine receptors. *Nature reviews. Immunology* 2013;**13**:815-829.
36. Weiss KM, Ruddle FH, Bollekens J. Dlx and other homeobox genes in the morphological development of the dentition. *Connect Tissue Res* 1995;**32**:35-40.
37. Lofgren SE, Delgado-Vega AM, Gallant CJ, *et al.* A 3'-untranslated region variant is associated with impaired expression of CD226 in T and natural killer T cells and is associated with susceptibility to systemic lupus erythematosus. *Arthritis Rheum* 2010;**62**:3404-3414.
38. Skaug B, Khanna D, Swindell WR, *et al.* Global skin gene expression analysis of early diffuse cutaneous systemic sclerosis shows a prominent innate and adaptive inflammatory profile. *Ann Rheum Dis* 2020;**79**:379-386.
39. Whitfield ML, Finlay DR, Murray JI, *et al.* Systemic and cell type-specific gene expression patterns in scleroderma skin. *Proc Natl Acad Sci U S A* 2003;**100**:12319-12324.
40. Gardner H, Shearstone JR, Bandaru R, *et al.* Gene profiling of scleroderma skin reveals robust signatures of disease that are imperfectly reflected in the transcript profiles of explanted fibroblasts. *Arthritis Rheum* 2006;**54**:1961-1973.
41. Milano A, Pendergrass SA, Sargent JL, *et al.* Molecular subsets in the gene expression signatures of scleroderma skin. *PLoS One* 2008;**3**:e2696.
42. Assassi S, Swindell WR, Wu M, *et al.* Dissecting the heterogeneity of skin gene expression patterns in systemic sclerosis. *Arthritis & rheumatology* 2015;**67**:3016-3026.
43. Derrett-Smith EC, Martyanov V, Chighizola CB, *et al.* Limited cutaneous systemic sclerosis skin demonstrates distinct molecular subsets separated by a cardiovascular development gene expression signature. *Arthritis Res Ther* 2017;**19**:156.
44. Pendergrass SA, Lemaire R, Francis IP, *et al.* Intrinsic gene expression subsets of diffuse cutaneous systemic sclerosis are stable in serial skin biopsies. *J Invest Dermatol* 2012;**132**:1363-1373.
45. Johnson ME, Mahoney JM, Taroni J, *et al.* Experimentally-derived fibroblast gene signatures identify molecular pathways associated with distinct subsets of systemic sclerosis patients in three independent cohorts. *PLoS One* 2015;**10**:e0114017.

46. Rice LM, Ziemek J, Stratton EA, *et al.* A longitudinal biomarker for the extent of skin disease in patients with diffuse cutaneous systemic sclerosis. *Arthritis & rheumatology* 2015;**67**:3004-3015.
47. Stifano G, Sornasse T, Rice LM, *et al.* Skin Gene Expression Is Prognostic for the Trajectory of Skin Disease in Patients With Diffuse Cutaneous Systemic Sclerosis. *Arthritis & rheumatology* 2018;**70**:912-919.
48. Hinchcliff M, Huang CC, Wood TA, *et al.* Molecular signatures in skin associated with clinical improvement during mycophenolate treatment in systemic sclerosis. *J Invest Dermatol* 2013;**133**:1979-1989.
49. Walker DL, Bhagwate AV, Baheti S, *et al.* DNA methylation profiling: comparison of genome-wide sequencing methods and the Infinium Human Methylation 450 Bead Chip. *Epigenomics* 2015;**7**:1287-1302.
50. Schubeler D. Function and information content of DNA methylation. *Nature* 2015;**517**:321-326.
51. Gutierrez-Arcelus M, Ongen H, Lappalainen T, *et al.* Tissue-specific effects of genetic and epigenetic variation on gene regulation and splicing. *PLoS Genet* 2015;**11**:e1004958.
52. Ambrosi C, Manzo M, Baubec T. Dynamics and Context-Dependent Roles of DNA Methylation. *Journal of molecular biology* 2017;**429**:1459-1475.
53. Gutierrez-Arcelus M, Lappalainen T, Montgomery SB, *et al.* Passive and active DNA methylation and the interplay with genetic variation in gene regulation. *eLife* 2013;**2**:e00523.
54. Bonder MJ, Luijk R, Zernakova DV, *et al.* Disease variants alter transcription factor levels and methylation of their binding sites. *Nat Genet* 2017;**49**:131-138.
55. Bonder MJ, Kasela S, Kals M, *et al.* Genetic and epigenetic regulation of gene expression in fetal and adult human livers. *BMC Genomics* 2014;**15**:860.
56. Grundberg E, Meduri E, Sandling JK, *et al.* Global analysis of DNA methylation variation in adipose tissue from twins reveals links to disease-associated variants in distal regulatory elements. *Am J Hum Genet* 2013;**93**:876-890.
57. Rice LM, Stifano G, Ziemek J, *et al.* Local skin gene expression reflects both local and systemic skin disease in patients with systemic sclerosis. *Rheumatology (Oxford)* 2016;**55**:377-379.
58. Ramos PS. Epigenetics of scleroderma: Integrating genetic, ethnic, age, and environmental effects. *Journal of Scleroderma and Related Disorders* 2019;**4**:238-250.
59. Tan FK, Zhou X, Mayes MD, *et al.* Signatures of differentially regulated interferon gene expression and vasculotrophism in the peripheral blood cells of systemic sclerosis patients. *Rheumatology (Oxford)* 2006;**45**:694-702.
60. Higgs BW, Liu Z, White B, *et al.* Patients with systemic lupus erythematosus, myositis, rheumatoid arthritis and scleroderma share activation of a common type I interferon pathway. *Ann Rheum Dis* 2011;**70**:2029-2036.
61. Higgs BW, Zhu W, Richman L, *et al.* Identification of activated cytokine pathways in the blood of systemic lupus erythematosus, myositis, rheumatoid arthritis, and scleroderma patients. *International journal of rheumatic diseases* 2012;**15**:25-35.
62. Brkic Z, van Bon L, Cossu M, *et al.* The interferon type I signature is present in systemic sclerosis before overt fibrosis and might contribute to its pathogenesis through high BAFF gene expression and high collagen synthesis. *Ann Rheum Dis* 2016;**75**:1567-1573.
63. Beretta L, Caronni M, Vanoli M, *et al.* Systemic sclerosis after interferon-alfa therapy for myeloproliferative disorders. *Br J Dermatol* 2002;**147**:385-386.
64. Solans R, Bosch JA, Esteban I, *et al.* Systemic sclerosis developing in association with the use of interferon alpha therapy for chronic viral hepatitis. *Clinical and experimental rheumatology* 2004;**22**:625-628.
65. Tahara H, Kojima A, Hirokawa T, *et al.* Systemic sclerosis after interferon alfacon-1 therapy for hepatitis C. *Intern Med* 2007;**46**:473-476.
66. Powell A, Myles ML, Yacyshyn E. The development of systemic sclerosis in a female patient with multiple sclerosis following beta interferon treatment. *Clin Rheumatol* 2008;**27**:1467-1468.
67. Rezaei R, Mahmoudi M, Gharibdoost F, *et al.* IRF7 gene expression profile and methylation of its promoter region in patients with systemic sclerosis. *International journal of rheumatic diseases* 2017;**20**:1551-1561.

- 68.** Manetti M, Romano E, Rosa I, *et al.* Endothelial-to-mesenchymal transition contributes to endothelial dysfunction and dermal fibrosis in systemic sclerosis. *Ann Rheum Dis* 2017;**76**:924-934.
- 69.** Mendoza FA, Piera-Velazquez S, Farber JL, *et al.* Endothelial Cells Expressing Endothelial and Mesenchymal Cell Gene Products in Lung Tissue From Patients With Systemic Sclerosis-Associated Interstitial Lung Disease. *Arthritis & rheumatology* 2016;**68**:210-217.
- 70.** Lim U, Song MA. Dietary and lifestyle factors of DNA methylation. *Methods Mol Biol* 2012;**863**:359-376.