

Sleep Duration and the Risk of Metabolic Syndrome: a Systematic Review and Meta-analysis

Jianian Hua^{13,#}, Hezi Jiang^{23,#}, Qi Fang^{1,*}

¹ Department of Neurology, The First Affiliated Hospital of Soochow University, Suzhou, 215006, Jiangsu Province, China.

² Department of Cardiology, The First Affiliated Hospital of Soochow University, Suzhou, China.

³ Medical College of Soochow University, Suzhou 215123, PR China.

[#]These authors contributed equally.

*Corresponding author

Qi Fang

fangqi_8714@163.com

Abstract

Objective: Epidemiologic studies have reported inconsistent findings about the association between sleep duration and metabolic syndrome. We aimed to clarify this association by method of meta-analysis.

Methods: A systematically search was conducted in four electronic databases from inception to May 2020. We collected data from 235,895 participants from 9 prospective cohort studies, and 340,492 participants from 26 cross-sectional studies. Risk ratios (RR) or odds ratios (OR) were calculated separately for cohort studies and cross-sectional studies, through meta-analysis of adjusted data from individual studies.

Results: For cohort studies, short sleep duration was associated with an increased risk of metabolic syndrome (RR, 1.15; 95% CI, 1.05-1.25). Long sleep duration was not associated with new onset metabolic syndrome (RR, 1.02, 0.85-1.18). For cross-sectional studies, both short (OR, 1.12, 95% CI, 1.08-1.18) and long (OR, 1.06, 1.01-1.11) sleep duration was associated with high prevalence of metabolic syndrome.

Conclusions: Only short sleep duration was associated with an increased risk of metabolic syndrome. Future studies should address whether the association is casual and modifiable.

Keywords: sleep duration, metabolic syndrome, cohort study, meta-regression, meta-analysis

1 Introduction

Metabolic syndrome is a cluster of disorders that occur together, and it is defined as a condition consisting of at least three of the following: hypertension, high blood sugar, excessive waist circumference, higher triglyceride (TG) levels or low high-density cholesterol (HDL) levels. Metabolic syndrome is associated with adverse cardiovascular events, even after adjusted for diabetes and obesity^{1,2}. Meanwhile, the prevalence of metabolic syndrome in America is up to 33%³. Recently, growing concern has been paid to the modifiable risk factors of metabolic syndrome⁴. Abnormal sleep duration is known to increase the risk of a serious health outcomes, including mortality, diabetes and cardiovascular disease^{5,6}. Therefore, both sleep and metabolic syndrome increase the risk of cardiovascular event. However, whether abnormal sleep duration increase the risk of metabolic syndrome remained controversial. Several meta-analyses have reported the association between sleep duration and metabolic syndrome⁷⁻⁹. Nevertheless, none of the studies assessed the association in a prospective cohort design, which could provide stronger support for causality^{6,10,11}. The aim of our studies was to: (1) examine all prospective cohort studies that have assessed the effect of sleep duration on the future risk of metabolic syndrome; (2) conduct an updated meta-analysis to examine the cross-sectional association.

2 Materials and Methods

We performed this study according to Preferred Reporting Items for Systematic Reviews and Meta-Analysis (PRISMA) guidelines (Table S1). Two independent researchers (JNH and HZJ) separately assessed the eligibility, extracted data, and checked the quality of the included studies. Any disagreement in screening the articles were resolved through discussion between these two, with adjudication by a third research (QF) if disagreements persisted.

2.1 Search strategy

A systematic search was conducted in Medline, Embase, CINAHL and PsycINFO from inception to May 2020. We used the following search terms: (1) "sleep hour" OR "sleeping hour" OR "hours of sleep" OR "sleep duration" OR "sleep time" OR "sleep length" OR "sleep period" OR "sleeping time" OR "sleep span"; (2) "metabolic syndrome" or "MetS" or "MS" or "syndrome X" or "cardiometabolic risk factor" or "insulin resistance syndrome". Algorithms combining the two sets of search terms were applied.

2.2 Study selection

Studies that examined the relationship between sleep duration and metabolic syndrome were screened for eligibility, without language restriction. The inclusion criteria were: (1) the research was

a cohort or a cross-sectional study; (2) the research compared individuals with “unnormal” and “normal” sleep duration on the outcome of metabolic syndrome. If one or more articles reported data from one study, the article with the largest sample size and the best design was included.

We analyzed cohort studies and cross-sectional studies separately in all analysis due to the following reasons. First, cross-sectional study could not establish a causal relationship, and it only reflected the association between sleep duration and the prevalence of metabolic syndrome¹¹. Second, the non-exposed prevalence of metabolic syndrome was higher than 20%¹², odds ratios (OR) could not be regarded as risk ratio (RR)¹³.

The inclusion of studies was conducted in two stages: (1) screening of the title and abstract and (2) screening of the full text.

2.3 Data extraction

The following characteristics were extracted from each eligible study: author name and publication year, study type, study location (country and continent), sample size, participants’ characteristics (age range, mean age and sex composition), exposure and outcome assessment (sleep assessment, metabolic syndrome measures and definition of long or short sleep duration) and main results.

Since definition of sleep duration varies among studies¹⁴, the three categories of sleep duration (short, long and normal) was extracted by one of the following two ways. For some papers, sleep duration was already divided into three categories based on cultures and ethnicities. For others, in which sleep duration was divided in to more than three groups, short or long sleep duration was defined as the shortest or longest group reported in the article⁶. With regard to the main results, the adjusted estimates that reflected the most comprehensive control were extracted.

Data were extracted by two investigators (JNH and HZJ) independently. Disagreement in screening the articles was resolved by discussion between the two investigators. Consultation from a third investigator (QF) was acquired if necessary.

2.4 Exposure and outcome measures

With regard to the measurements of nocturnal sleep duration, two studies used objective measurement, while others used interview or questionnaire.

The diagnostic criteria of metabolic syndrome (MetS) varied between studies. 10 studies used the Third Report of the National Cholesterol Education Program’s Adult Treatment Panel III (NECP ATP-III); 4 studies used modified NECP ATP-III; 14 studies used the American Heart Association/National Heart Lung and Blood Institute (AHA-NHLBI); 3 studies used the International Diabetes Federation (IDF)⁸; 5 studies used other criteria.

2.5 Quality appraisal

The quality of all studies was evaluated by Newcastle-Ottawa Quality Assessment Scale (NOS)¹⁵. The total score ranged from 0-9 scores. For outcome category and comparability category, all the studies had similar quality. The difference between studies lied in the study design category (Table S3).

2.6 Data analysis

We conducted all the following analysis separately for cohort studies and cross-sectional studies, and for study-specific short and long sleep duration, respectively.

In analysis of cohort studies, hazard ratios (HRs) were regarded as risk ratios (RRs). For studies which provided only odds ratios (ORs), we calculated RRs by using the ORs and control event rates (CERs) in normal sleepers. Using random-effect models, we estimated the pooled RR and 95% CI. With regard to cross-sectional studies, we calculated the pooled OR and 95%CI using random-effect models.

Heterogeneity between the studies was assessed using Cochran Q statistics ($P < 0.1$ indicates statistically significant heterogeneity) and I^2 statistic ($I^2 > 50\%$ indicates statistically significant heterogeneity)¹⁶. To examine publication bias, we used a funnel plot, the Egger regression test, and the Begg and Mazumdar test^{17,18}. “Trim and fill” method was used to adjust the funnel plot, and recalculated the results^{19,20}. Sensitivity analysis was performed by excluding one study at a time to test the robustness of the pooled estimates.

Subgroup analysis was conducted to explore the potential heterogeneity among cross-sectional studies. We used z test to compare summary estimates of each subgroups²¹. Univariate and multivariate meta-regression were used to study the effect of possible influential confounders, such as definition of sleep duration and study quality. For cohort studies, subgroup analysis and meta-regression was not performed considering the small number of datasets included in the meta-analysis. All statistical analysis was performed by R-3.4.3²⁰ and Stata 15.1 (Stata Corp, College Station, TX).

3 Results

3.1 Search results

The initial electronic search yielded 1140 articles, among which 789 were reviewed by title and abstract. 127 full-texts were retrieved. 35 studies were included in the final analysis (Figure 1).

3.2 Characteristics of study samples

We identified nine prospective cohort studies that examined the association between sleep duration and the incident risk of metabolic syndrome, in a total of 235,895 participants. The sample size ranged from 293 to 162,121. The mean follow-up duration ranged from 2 to 8 years (Table 1).

Another twenty-six studies were cross-sectional studies, included a total of 340,492 individuals. The sample size ranged from 263 to 88,678 (Table S2). Table 1 and Table S2 presented the characteristics of the all 35 studies. The individuals aged above 18 year. The mean (SD) age of the individuals ranged from 31 (8.7) to 67.6 (7.3) years. The studies were conducted in five continents, while many of them were from Asia. The definitions of short or long sleep duration varied between studies. About 75% studies defined “short sleep duration” as < 6 or 7 h, and about 80% studies defined “long sleep duration” as > 8 or 9 h.

3.3 Primary analysis

3.3.1 Sleep duration and the risk of metabolic syndrome

Compared with moderate sleep duration, short sleep duration was associated with a statistically significant increase in new onset metabolic syndrome, with an RR of 1.15 (95% CI=1.05-1.25, $P<0.001$, $I^2=63.6\%$, N of datasets=11; Figure 2A).

Compared with moderate sleep duration, the association between long sleep duration and risk of metabolic syndrome was not statistically significant, with an RR of 1.02 (95% CI=0.85-1.18, $P=0.491$, $I^2=38.0\%$, N=9; Figure 2B), using random effect model. The RR reduced to 0.94 (95% CI=0.89-0.99, $P=0.050$, $I^2=38.0\%$, N=9), using fixed effect model.

Among the seven studies that examined the effect of long sleep duration, six did not observe a significant association. Only Li X. found that long sleep duration increased the risk of metabolic syndrome among men (adjusted HR=1.96, 95% CI=1.35-2.85).

3.3.2 Sleep duration and the prevalence of metabolic syndrome

Compared with moderate sleepers, people with short or long sleep duration had a higher prevalence of metabolic syndrome. The pooled OR of metabolic syndrome in short sleepers compared to moderate sleepers was 1.12 (95% CI=1.08-1.18, $P=0.009$, $I^2=77.9\%$, N=32; Figure 3A). The pooled OR of metabolic syndrome in short sleepers compared to moderate sleepers was 1.06 (95% CI=1.01-1.11, $P=0.003$, $I^2=66.5\%$, N=32; Figure 3A). The pooled OR of metabolic syndrome in long sleepers compared to moderate sleepers was 1.11 (95% CI=1.04-1.17, $P<0.001$, $I^2=73.8\%$, N=31; Figure 3B).

3.4 Possible publication bias for primary analysis

Results of Begg and Mazumdar and Egger test were shown in Supplementary Table S4. No significant publication bias was observed. “Trim and fill” test indicated that the primary results was still significant after the missing studies were filled in (Table S5). Visual inspection of the funnel plots also did not reveal apparent publication bias (Figures not shown).

3.5 Subgroup analysis

Subgroup analysis of the cross-sectional studies were shown in Table 2. No significant subgroup difference was found for gender, continent, and definition of abnormal sleep duration. There were statistically significant subgroup effects ($P < 0.05$ for heterogeneity between groups). For short sleepers, the specific domains were study population, sleep measurement, measures of metabolic syndrome and sample size. For long sleepers, the specific domains were sleep measurement, long sleep duration, measures of metabolic syndrome, sample size, and study quality. However, there was still unexplained heterogeneity within some subgroups. Therefore, the subgroup couldn't fully explain the overall heterogeneity.

For short sleepers, hospital-based participants had a higher OR than the community-based. With regard to definition of short sleep duration, there was a tendency that lower duration was associated with higher OR. Nevertheless, the P value was not significant.

For long sleepers, compared with "NECP" group, "modified-NECP" group had higher OR. Studies with more participants or higher quality had lower OR.

3.6 Sensitivity analysis

None of the sensitivity analysis substantially altered the effect of both long and short sleep duration on metabolic syndrome (Figure S1).

3.7 Meta-regression

With regard to cross-sectional studies, a multivariate meta-regression analysis (Table 3) was conducted to examine the potential influence of different factors on the natural logarithm of the OR of short or long sleep duration with prevalence of MetS. For short sleepers, shorter definition of duration was associated with higher OR ($P = 0.011$ for multivariable test, and $P = 0.099$ for univariable test). Higher study quality was associated with lower OR ($P = 0.010$ for univariable test and $P = 0.033$ for multivariable test). The effect of mean age was significant. However, the clinical effect (coef = -0.01) could be ignored. For long sleepers, none of the study factors was significant.

4 Discussion

To our knowledge, our study is the first meta-analysis on the association between sleep duration and the risk of metabolic syndrome. Our study indicated that short sleep duration correlated with an increase in the risk of metabolic syndrome. Long duration was not statistically associated with the risk of metabolic syndrome. With regard to cross-sectional studies, both short and long sleep duration was associated with higher prevalence of metabolic syndrome.

Our results differed from that of three previous meta-analysis, which reported the association between sleep duration and metabolic syndrome. Limited by sample size, the three studies did not distinguish cross-sectional studies and cohort studies in the main outcome. *Ju 2013* and *Ifthikhar 2015* reported only short sleep duration was associated with metabolic syndrome^{7,8}, while *Xi 2014* linked

both short and long sleep duration to metabolic syndrome⁹. Meanwhile, we observed narrower confidence intervals, which might be due to our higher number of included datasets. Nowadays, a growing number of articles reported an inverted-U shaped association between sleep duration and health outcomes, including metabolic syndrome²². Our findings suggested that long sleep duration might have no effect.

Compared with the previous studies, we further conducted comprehensive sub-group analysis and meta-regression for cross-sectional studies. In subgroup analysis, using z test, we found no statistically significant differences in subgroups of sex, continent, and sleep measurement. For short sleepers, hospital-based participants had a higher prevalence than community-based participants, which was consistent with a previous meta-analysis. One possible reason was that people in hospital had poor health conditions. The results of subgroup analysis and meta-regression both showed that studies with high quality or larger sample size had smaller risk estimates. In multivariable meta-regression, shorter sleep duration was linearly associated with higher prevalence of metabolic syndrome. Longer sleep duration had no linear association. This “J-shaped” association was not consistent with the “U-shaped” association between sleep duration reported in many articles.²² However, we thought this was not contradictory. In the meta-regression, “sleep duration” was a cut-off point defined by different authors from different ethnicities; and in one specific study, the author calculated the association among participants from a same ethnic.

Several mechanisms linked sleep duration to metabolic syndrome. Short sleep duration could lead to the following endocrine changes, by affecting carbohydrate metabolism, hypothalamo-pituitary-adrenal axis and sympathetic activity. Decreased glucose tolerance and insulin sensitivity would raise the glucose levels; increased levels of ghrelin, decreased levels of leptin and increased appetite correlated with higher waist circumference; increased cortisol concentrations were associated with higher blood pressure.^{23,24} Short sleepers tended to have low-grade inflammation. Elevated levels of high-sensitivity C-reactive protein and IL-6 correlated with cardiovascular events.²⁵ Long sleep duration was linked to sleep fragmentation, which would cause plenty of health outcomes, including metabolic change.²⁶ Long sleepers also have less time to take exercise, which might contribute to the association.²⁷ Both short and long sleep duration had bidirectional association with circadian rhythm, which is a risk factor for metabolic disorders.^{28,29} Despite these mechanisms which could explain the association, whether sleep duration was a causal risk factor for metabolic syndrome was still not sure.³⁰ Cohort studies still could not provide a causal result, though they have more power than cross-sectional studies. To prove a causal relationship, we need further examine the effect of changes in sleep duration,³¹ and product Mendelian randomization study, a method using measured variation in genes.

The advantage of our meta-analysis was that we were the first to report that short sleep duration, instead of long sleep duration, was a risk factor for developing metabolic syndrome. However, there were some limitations that should be taken into consideration. First, the sleep categories varied between studies. There was no unified standard for definition of abnormal sleep duration. Second, the

estimates of relative risk had less accuracy than that in the individual patient data meta-analysis. Third, we only included nine cohort studies, which prevent us from conducting further research, such as subgroup analysis and meta-regression. Fourth, only two studies used objective sleep measurement. More studies based on the objective measurement are needed in the future.

5 Conclusions

Both short and long sleep duration was associated with high prevalence of metabolic syndrome cross-sectionally. Short sleep duration, rather than long sleep duration, was associated with a significant increase in risk for metabolic syndrome. Sufficient sleep duration should be recommended to prevent metabolic syndrome.

6 Author contributions

Qi Fang and Jianian Hua contributed to the conception and design of the study. Jianian Hua organized the database. Jianian Hua and Hezi Jiang performed the statistical analysis. Jianian Hua wrote the first draft of the manuscript. Qi Fang and Hezi Jiang reviewed the manuscript. All authors approved the final version of the paper.

7 Funding

This study was not supported by any funding.

8 Conflicts of interest

The authors declare that the research was conducted in the absence of any commercial or financial relationships that could be construed as a potential conflict of interest.

9 Preprint

295 10 Tables

296 10.1 Table 1. Characteristics of cohort studies

297

Author, Year	Study type (follow-up time)	Country, Continent	Sample size	Mean age ± SD, range	Male%	Study population	Sleep measurement	Metabolic syndrome measurement	Sleep (h)	Main findings reported In original articles: Adjusted HR/RR/OR (95% CI)
Choi, 2011 (male) ³²	Cohort (2-4)	Korea Asia	2093	40-55	0	Community	Interview	NECP ATP-III	<6 6-8 ≥10	aHR1.80(1.06-3.05) Ref. aHR1.57(0.61-4.01)
Choi, 2011 (female) ³²	Cohort (2-4)t	Korea Asia	2133	40-55	100	Community	Interview	NECP ATP-III	<6 6-8 ≥10	aHR 0.62(0.24-1.64) Ref. aHR1.66(0.71-3.88)
Otsuka, 2011 ³³	Cohort (3.7)	Japan Asia	2090	44.6 35-63	47.2	Community	Questionnaire	Japanese criteria	≤5 >6	aHR 3.18 (1.52-6.64) Ref.
Chaput, 2013 ³⁴	Cohort (6)	Canada North America	293	39.2±14.3 18-65	NA	Community	Questionnaire	AHA-NHLBI	≤6 7-8 ≥9	aHR 1.82(1.16-4.79) Ref. aHR 1.13(0.58-1.98)
Kim, 2015 ³⁵	Cohort (2.6)	Korea Asia	2579	54.1±8.3 ≥20	34.5	Company office	or Interview	AHA-NHLBI	<6 7-8 ≥10	aOR 1.41(1.06-1.88) Ref. aOR 0.68 (0.39-1.17)
Li, 2015 (male) ³⁶	Cohort (4.4)	China Asia	4774 for all	30-65	100	Community	Questionnaire	AHA-NHLBI	<6 7-8 >8	aRR 1.87 (1.51-2.30) Ref. aRR 1.96 (1.35-2.85)
Li, 2015 (female) ³⁶	Cohort (4.4)	China Asia	4774 for all	30-65	0	Community	Questionnaire	AHA-NHLBI	<6 7-8 >8	aRR 0.93 (0.73-1.19) Ref. aRR 0.93 (0.60-1.53)
Song, 2016 ³⁷	Cohort (2)	China Asia	11661	47.0±12.0 18-98	82.1	Hospital	Questionnaire	AHA-NHLBI	≤5.5 7 ≥8.5	aHR 1.22 (1.00-1.49) Ref. aHR 1.24 (0.93-1.66)
Deng, 2017 ¹²	Cohort (8)	Taiwan Asia	162121	20-80	47.4	Community	Questionnaire	AHA-NHLBI	<6 6-8 >8	aHR 1.09 (1.05-1.13) Ref. aHR 0.93 (0.88-0.99)
Itani, 2017 ³⁸	Cohort (7)	Japan Asia	39182	42.4±9.8 ≥20	100	Company office	or Questionnaire	Japanese criteria	<5 ≥5	aHR 1.08 (1.03-1.14) Ref.
Yingnan, 2020 ³⁹	Cohort (3)	China Asia	8969	56.7±7.7 35-75	35	Community	Questionnaire	Chinese Criteria	<6 7-8 >9	aOR 1.25(0.75 2.08) Ref. aOR 0.96 (0.69,1.33)

10.2 Table 2. Subgroup meta-analysis of cross-sectional studies

	Short sleep				Long sleep			
	No.	OR (95% CI)	I ²	P _z ^a	No.	OR (95% CI)	I ²	P _z
Gender								
Men	7	1.05 (0.98, 1.12)	46	Ref.	7	1.03 (0.99, 1.08)	14.0	Ref.
Women	7	0.99 (0.89, 1.09)	56.8	0.121	7	1.09 (1.00, 1.18)	67.9	0.272
		P=0.174 ^b				P=0.104		
Continent								
Asia	19	1.08 (1.01, 1.17)	75.8	Ref.	20	1.12 (1.05, 1.20)	79.0	Ref.
Europe	6	1.03 (0.98, 1.08)	20.8	0.271	6	1.17 (1.01, 1.36)	64.6	0.583
North Europe	5	1.31 (0.99, 1.74)	24.5	0.205	4	1.22 (0.75, 2.00)	15.0	0.736
South Europe	1	1.70 (1.19, 2.44)	0.0	0.016	1	1.08 (0.92, 4.26)	0	0.147
Africa	1	0.96 (0.51, 1.81)	0.0	0.708		P=0.171		
		P=0.173						
Study population								
Community	21	1.03 (0.98, 1.08)	57.7	Ref.	22	1.14 (1.07, 1.21)	65.9	Ref.
Hospital	5	1.36 (1.21, 1.53)	45.7	<0.001	5	1.10 (0.77, 1.59)	91.6	0.885
Company or office	6	1.15 (0.93, 1.41)	37.6	0.334	4	1.09 (0.93, 1.28)	0	0.644
		P<0.001				P=0.261		
Sleep measurement								
Questionnaire	16	1.08 (0.99, 1.18)	69.4	Ref.	15	1.11 (1.03, 1.20)	87.6	Ref.
Interview	8	1.13 (1.04, 1.23)	76.3	0.496	8	1.12 (1.01, 1.24)	36.6	0.893
Standard questionnaire	6	1.02 (0.92, 1.13)	0.0	0.363	6	1.13 (0.90, 1.40)	81.1	0.947
Objective	2	0.92 (0.67, 1.28)	0.0	0.349	2	1.27 (0.63, 2.56)	28.3	0.733
		P=0.012				P=0.021		
Definition of sleep duration								
< 5 for short, > 9 for long	5	1.23 (0.98, 1.5)	29.2	Ref.	7	1.09 (0.92, 1.29)	67.3	Ref.
< 6 for short, > 8 for long	13	1.13 (1.02, 1.24)	82.4	0.492	17	1.18 (1.09, 1.27)	53.6	0.405
< 7 for short, > 7 for long	2	1.04 (0.98, 1.11)	20.4	0.164	6	1.01 (0.92, 1.11)	93	0.464
< 8	2	0.98 (0.90, 1.06)	0.0	0.065		P=0.121		
		P=0.154						
MetS measurement								
NECP ATP-III	12	1.06 (0.98, 1.16)	68.2	Ref.	10	1.07 (0.98, 1.15)	73.8	Ref.
Modified NECP ATP-III	6	1.00 (0.94, 1.07)	34.3	0.308	6	1.22 (1.15, 1.28)	35.8	0.006
AHA-NHLBI	9	1.20 (1.03, 1.39)	44.3	0.186	9	1.23 (1.01, 1.50)	27.3	0.195
IDF	3	1.05 (0.88, 1.25)	21.0	0.879	5	1.07 (1.01, 1.14)	33.4	0.945
Others	2	1.40 (1.22, 1.61)	14.1	<0.001	1	0.98 (0.81, 1.19)	10.1	0.426
		P<0.001				P<0.001		

Table 2-Continued Subgroup meta-analysis of cross-sectional studies\

	Short sleep				Long sleep			
	No.	OR (95% CI)	I ²	P _z	No.	OR (95% CI)	I ²	P _z
Sample size								
<5000	23	1.07 (0.99, 1.06)	49.7	Ref.	18	1.28 (1.12, 1.47)	56.2	Ref.
5000-20000	5	1.09 (0.96, 1.25)	57.4	0.842	8	1.05 (0.95, 1.15)	82.0	0.018
>20000	4	1.11 (1.00, 1.23)	51.3	0.638	5	1.09 (1.01, 1.18)	82.1	0.044
		P=0.004				P<0.001		
Study quality								
High	7	1.03 (1.00, 1.06)	26.9	Ref.	7	1.03 (0.97, 1.09)	60.5	Ref.
Low	25	1.06 (1.03, 1.09)	63.4	0.013	23	1.15 (1.06, 1.25)	70.7	0.030
		P=0.143				P<0.001		

^aP value of two sample z-test for estimates between subgroups.

^bP for heterogeneity.

10.3 Table 3. Results of meta-regression analysis of cross-sectional studies

Short sleep duration				
	Univariable analysis		Multivariable analysis	
	Coef.	P value	Coef.	P value
Mean age, years	-0.01 (-0.02, -0.01)	0.020	-0.01 (-0.01, 0.00)	0.086
Proportion of males, %	0.08 (-0.10, 0.27)	0.356	-0.05 (-0.23, 0.14)	0.622
Definition of short/long sleep	-0.07 (-0.15, 0.01)	0.099	-0.08 (-0.15, -0.12)	0.011
Sample size	0.01 (-0.08, 0.09)	0.864	0.01 (-0.09, 0.09)	0.351
Study quality	-0.15 (-0.30, 0.00)	0.039	-0.26 (-0.61, 0.09)	0.149
Long sleep duration				
	Univariable analysis		Multivariable analysis	
	Coef.	P value	Coef.	P value
Mean age, years	0.00 (0.00, 0.01)	0.113	0.00 (-0.00, 0.01)	0.720
Proportion of males, %	0.01 (-0.18, 0.02)	0.891	-0.04 (-0.44, 0.35)	0.828
Definition of short/long sleep	-0.16 (-0.33, 0.10)	0.776	-0.09 (-0.28, 0.10)	0.958
Sample size	-0.09 (-0.18, 0.00)	0.056	-0.08 (-0.25, 0.08)	0.318
Study quality	-0.01 (-0.14, 0.10)	0.807	0.01 (-0.50, 0.52)	0.360

11 Figure legends

Figure 1. Flowchart for the included studies.

Figure 2. Forest plot of association between sleep duration and the risk of metabolic syndrome. (A) Comparing short sleepers with normal sleepers; (B) Comparing long sleepers with normal sleepers.

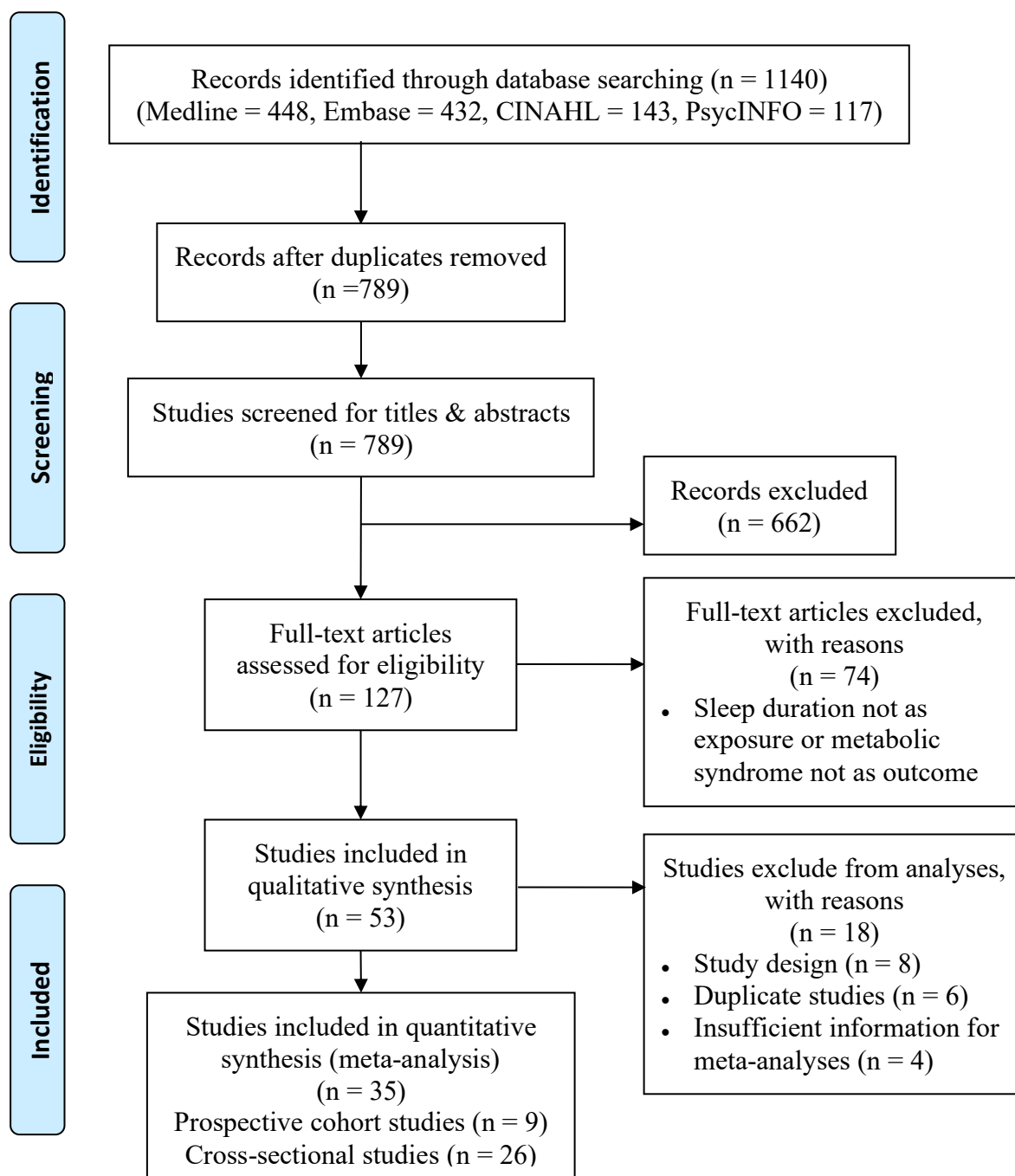
Figure 3. Forest plot of association between sleep duration and the prevalence of metabolic syndrome. (A) Comparing short sleepers with normal sleepers; (B) Comparing long sleepers with normal sleepers.

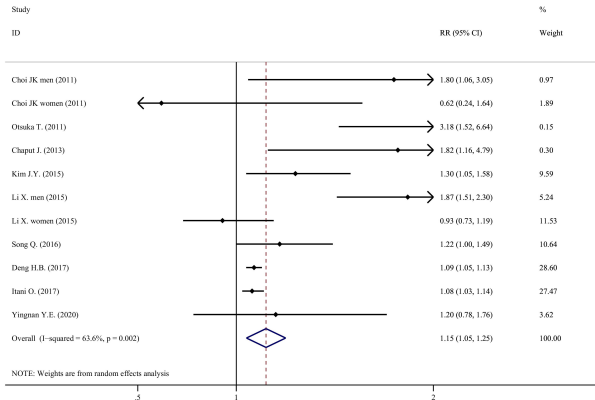
12 References

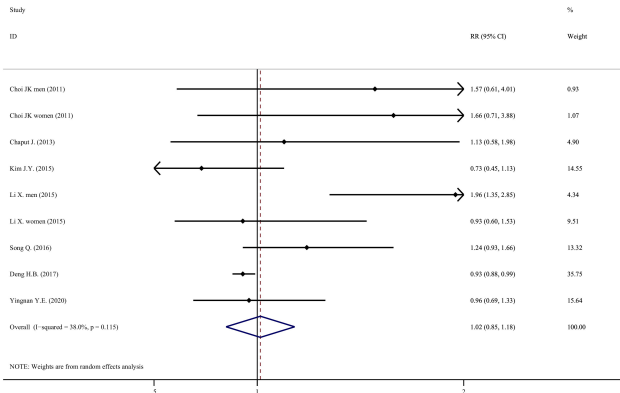
1. Isomaa B, Almgren P, Tuomi T, et al. Cardiovascular morbidity and mortality associated with the metabolic syndrome. *Diabetes Care* 2001; **24**(4): 683-9.
2. Daly CA, Hildebrandt P, Bertrand M, et al. Adverse prognosis associated with the metabolic syndrome in established coronary artery disease: data from the EUROPA trial. *Heart* 2007; **93**(11): 1406-11.
3. Aguilar M, Bhuket T, Torres S, Liu B, Wong RJ. Prevalence of the metabolic syndrome in the United States, 2003-2012. *JAMA* 2015; **313**(19): 1973-4.
4. Di Marzo V, Silvestri C. Lifestyle and Metabolic Syndrome: Contribution of the Endocannabinoidome. *Nutrients* 2019; **11**(8).
5. Krittanawong C, Tunhasirwet A, Wang Z, et al. Association between short and long sleep durations and cardiovascular outcomes: a systematic review and meta-analysis. *Eur Heart J Acute Cardiovasc Care* 2019; **8**(8): 762-70.
6. Jike M, Itani O, Watanabe N, Buysse DJ, Kaneita Y. Long sleep duration and health outcomes: A systematic review, meta-analysis and meta-regression. *Sleep Med Rev* 2018; **39**: 25-36.
7. Ju SY, Choi WS. Sleep duration and metabolic syndrome in adult populations: a meta-analysis of observational studies. *Nutr Diabetes* 2013; **3**: e65.
8. Iftikhar IH, Donley MA, Mindel J, Pleister A, Soriano S, Magalang UJ. Sleep Duration and Metabolic Syndrome. An Updated Dose-Risk Metaanalysis. *Ann Am Thorac Soc* 2015; **12**(9): 1364-72.
9. Xi B. **Short sleep duration predicts risk of metabolic syndrome: A systematic review and meta-analysis.** 2014.
10. Karen Grace-Martin AG. Cohort and Case-Control Studies: Pro's and Con's. 2017; <https://www.theanalysisfactor.com/cohort-and-case-control-studies-pros-and-cons/>.
11. Setia MS. Methodology Series Module 3: Cross-sectional Studies. *Indian J Dermatol* 2016; **61**(3): 261-4.
12. Deng HB, Tam T, Zee BC, et al. Short Sleep Duration Increases Metabolic Impact in Healthy Adults: A Population-Based Cohort Study. *Sleep* 2017; **40**(10).
13. Grant RL. Converting an odds ratio to a range of plausible relative risks for better communication of research findings. *BMJ* 2014; **348**: f7450.
14. Adenekan B, Pandey A, McKenzie S, Zizi F, Casimir GJ, Jean-Louis G. Sleep in America: role of racial/ethnic differences. *Sleep Med Rev* 2013; **17**(4): 255-62.
15. Wells G SB, O'Connell D, Peterson J, Welch V, Losos M. The Newcastle-Ottawa Scale (NOS) for assessing the quality of nonrandomised studies in meta-analyses. 2014; http://www.ohri.ca/programs/clinical_epidemiology/oxford.asp.
16. Higgins JP, Thompson SG, Deeks JJ, Altman DG. Measuring inconsistency in meta-analyses. *BMJ* 2003; **327**(7414): 557-60.
17. Egger M, Davey Smith G, Schneider M, Minder C. Bias in meta-analysis detected by a simple, graphical test. *BMJ* 1997; **315**(7109): 629-34.
18. Begg CB, Mazumdar M. Operating characteristics of a rank correlation test for publication bias. *Biometrics* 1994; **50**(4): 1088-101.

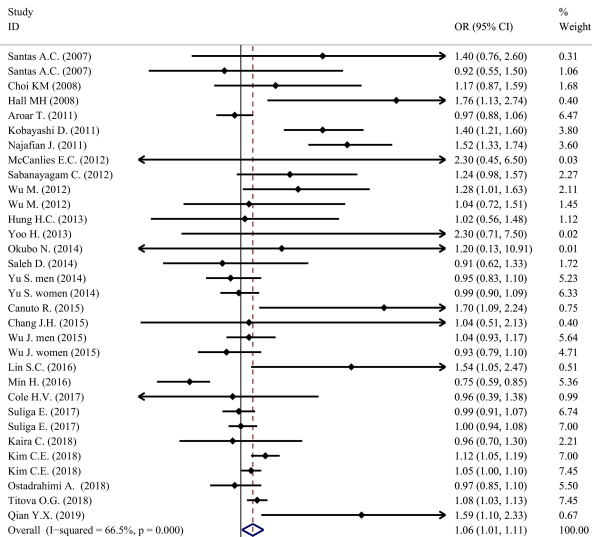
19. Duval S, Tweedie R. Trim and fill: A simple funnel-plot-based method of testing and adjusting for publication bias in meta-analysis. *Biometrics* 2000; **56**(2): 455-63.
20. W. V. Conducting meta-analyses in R with the metafor package. *J Stat Softw* 2010; **2010**; **36**: 1-48.
21. Zhang Tiansong ZS. How to compare summary estimates of different subgroups in meta-analysis. *Chinese Journal of Evidence-Based Medicine* 2017; <https://www.ixueshu.com/document/be6c862ae782c141182f500f64e4272a318947a18e7f9386.html>.
22. Smiley A, King D, Bidulescu A. The Association between Sleep Duration and Metabolic Syndrome: The NHANES 2013/2014. *Nutrients* 2019; **11**(11).
23. Spiegel K, Leproult R, Van Cauter E. Impact of sleep debt on metabolic and endocrine function. *Lancet* 1999; **354**(9188): 1435-9.
24. Zimberg IZ, Damaso A, Del Re M, et al. Short sleep duration and obesity: mechanisms and future perspectives. *Cell Biochem Funct* 2012; **30**(6): 524-9.
25. Meier-Ewert HK, Ridker Pm Fau - Rifai N, Rifai N Fau - Regan MM, et al. Effect of sleep loss on C-reactive protein, an inflammatory marker of cardiovascular risk. 2004 ; (0735-1097 (Print)).
26. Grandner MA, Drummond SP. Who are the long sleepers? Towards an understanding of the mortality relationship. *Sleep Med Rev* 2007; **11**(5): 341-60.
27. Stranges S, Dorn JM, Shipley MJ, et al. Correlates of short and long sleep duration: a cross-cultural comparison between the United Kingdom and the United States: the Whitehall II Study and the Western New York Health Study. *Am J Epidemiol* 2008; **168**(12): 1353-64.
28. Allebrandt KV, Teder-Laving M, Akyol M, et al. CLOCK gene variants associate with sleep duration in two independent populations. *Biol Psychiatry* 2010; **67**(11): 1040-7.
29. Lemmer B, Oster H. The Role of Circadian Rhythms in the Hypertension of Diabetes Mellitus and the Metabolic Syndrome. *Curr Hypertens Rep* 2018; **20**(5): 43.
30. Kraemer HC, Kazdin AE, Offord DR, Kessler RC, Jensen PS, Kupfer DJ. Coming to terms with the terms of risk. *Arch Gen Psychiatry* 1997; **54**(4): 337-43.
31. Buysse DJ. Sleep health: can we define it? Does it matter? *Sleep* 2014; **37**(1): 9-17.
32. Choi JK, Kim MY, Kim JK, et al. Association between short sleep duration and high incidence of metabolic syndrome in midlife women. *Tohoku J Exp Med* 2011; **225**(3): 187-93.
33. Otsuka T, Kawada T, Yanai M, Kitagawa Y, Kan H. [Incidence of metabolic syndrome and associated lifestyle factors in a worksite male population]. *Sangyo Eiseigaku Zasshi* 2011; **53**(3): 78-86.
34. Chaput JP, McNeil J, Despres JP, Bouchard C, Tremblay A. Short sleep duration as a risk factor for the development of the metabolic syndrome in adults. *Prev Med* 2013; **57**(6): 872-7.
35. Kim JY, Yadav D, Ahn SV, et al. A prospective study of total sleep duration and incident metabolic syndrome: the ARIRANG study. *Sleep Med* 2015; **16**(12): 1511-5.
36. Li X, Lin L, Lv L, et al. U-shaped relationships between sleep duration and metabolic syndrome and metabolic syndrome components in males: a prospective cohort study. *Sleep Med* 2015; **16**(8): 949-54.
37. Song Q, Liu X, Zhou W, Wang X, Wu S. Changes in sleep duration and risk of metabolic syndrome:

464 the Kailuan prospective study. *Sci Rep* 2016; **6**: 36861.
465 38. Itani O, Kaneita Y, Tokiya M, et al. Short sleep duration, shift work, and actual days taken off work are
466 predictive life-style risk factors for new-onset metabolic syndrome: a seven-year cohort study of 40,000 male
467 workers. *Sleep Med* 2017; **39**: 87-94.
468 39. Ye Y, Zhang L, Wang A, et al. Association of sleep duration with stroke, myocardial infarction, and
469 tumors in a Chinese population with metabolic syndrome: a retrospective study. *Lipids Health Dis* 2020; **19**(1):
470 155.
471

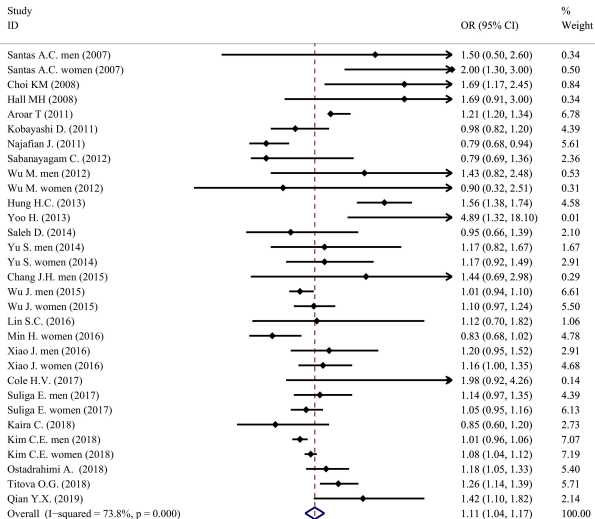








NOTE: Weights are from random effects analysis



NOTE: Weights are from random effects analysis