

Epidemiological Association of Cannabinoid- and Drug- Exposures and Sociodemographic Factors with Limb Reduction Defects Across USA 1989-2016: A Geotemporospatial and Causal Inference Study

Short Title:

Limb Reduction Defects and Drug and Cannabinoid Exposure

Albert Stuart Reece, MBBS(Hons.), FRCS(Ed.), FRCS(Glas.), FRACGP, MD (UNSW) ^{1,2}

Gary Kenneth Hulse, BBS(Hons.), MBS(Hons.), PhD. ^{1,2}

Affiliations:

1 - Division of Psychiatry,
University of Western Australia,
Crawley, Western Australia 6009, Australia.

2 – School of Medical and Health Sciences,
Edith Cowan University,
Joondalup, Western Australia, 6027, Australia.

*** Address Correspondence to:**

Albert Stuart Reece
39 Gladstone Rd.,
Highgate Hill,
Brisbane, Queensland, Australia.

Ph: (617) 3844-4000

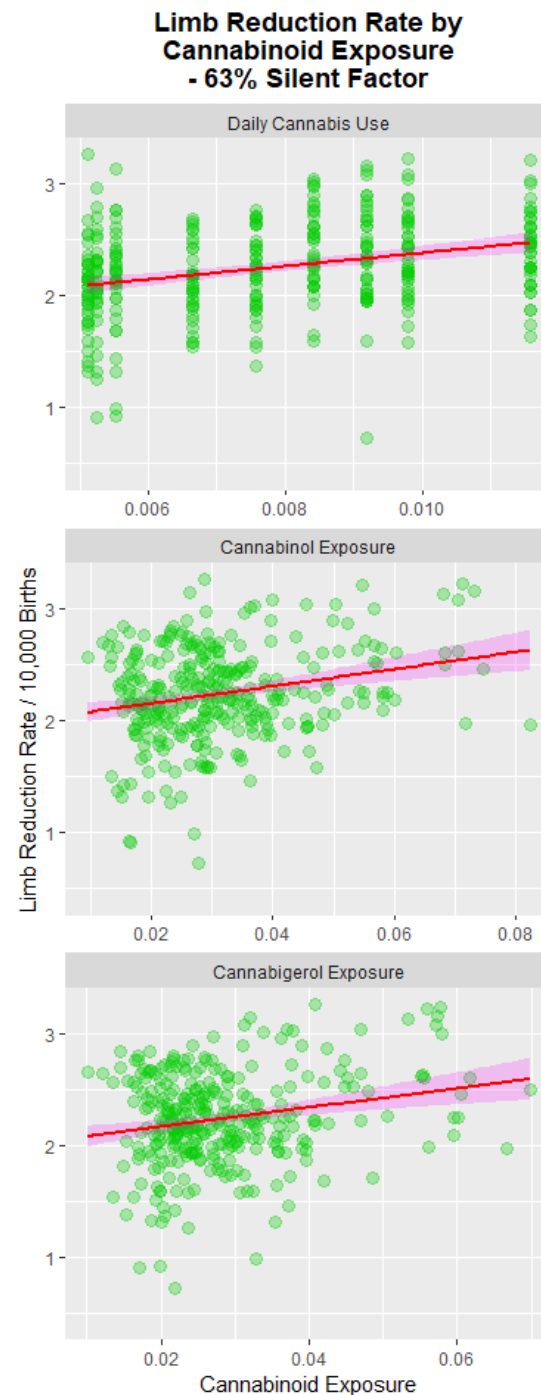
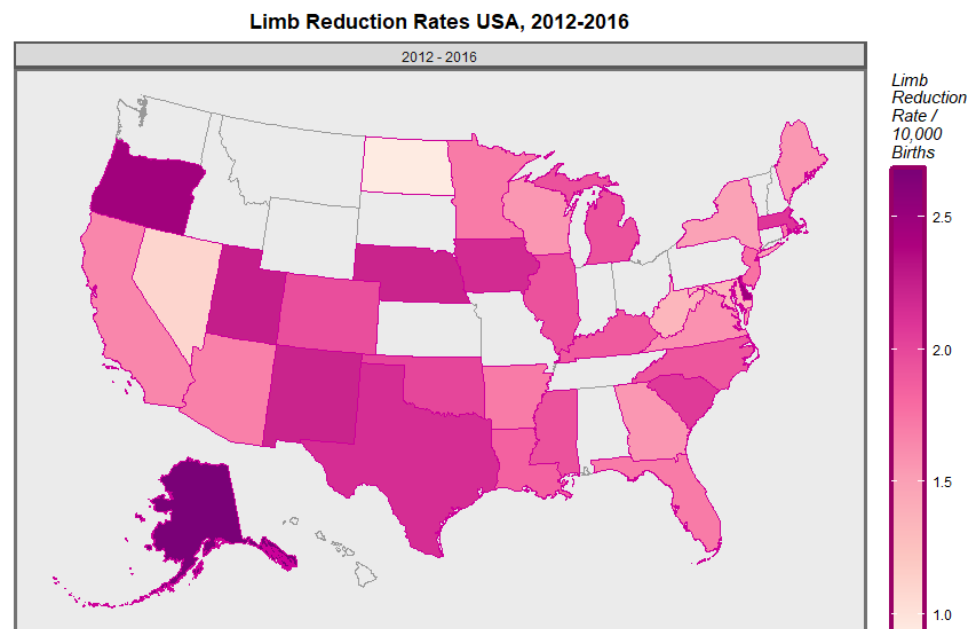
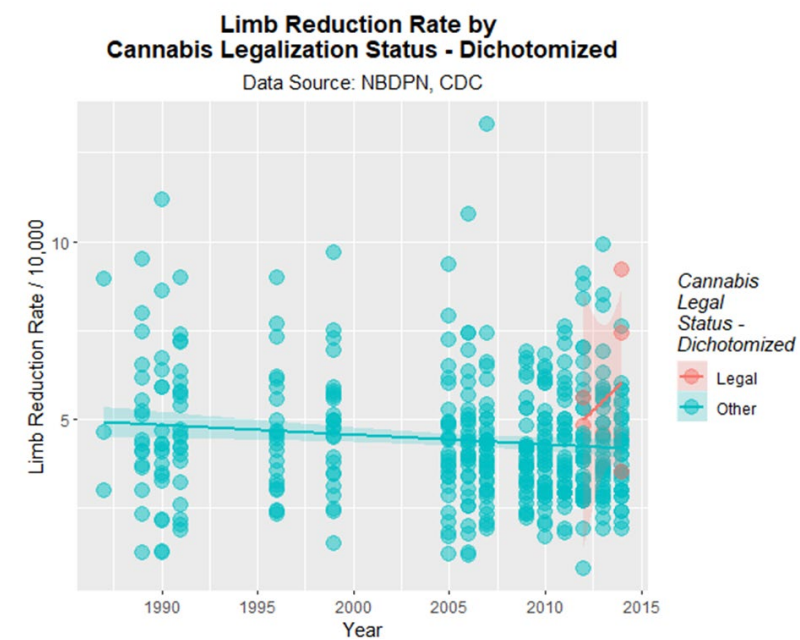
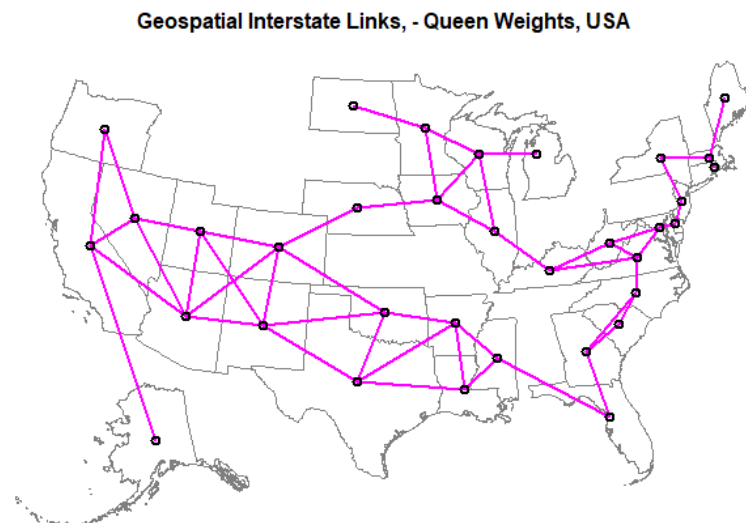
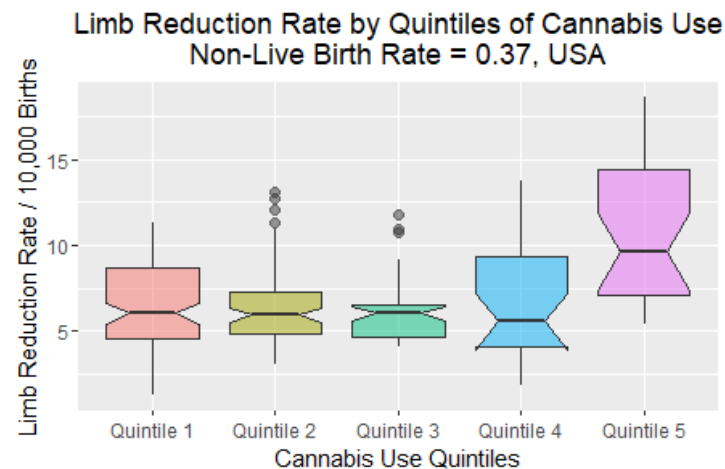
FAX: (617) 3844-4015

Email: stuart.reece@bigpond.com

Word Count: 4,236.

Key words: cannabis, cannabinoid, Δ^9 -tetrahydrocannabinol, cannabigerol, cannabis-related teratology, limb reduction defects.

NOTE: This preprint reports new research that has not been certified by peer review and should not be used to guide clinical practice.



Abstract

Reports of major limb defects after prenatal cannabis exposure (PCE) in animals and of human populations in Hawaii, Europe and Australia raise the question of whether the increasing use of cannabis in USA might be spatiotemporally associated with limb reduction rates (LRR) across USA. Geotemporospatial analysis conducted in R. LRR was significantly associated with cannabis use and THC potency and demonstrated prominent cannabis-use quintile effects. In final lagged geospatial models interactive terms including cannabinoids were highly significant and robust to adjustment. States in which cannabis was not legalized had a lower LRR (4.28 v 5.01 /10,000 live births, relative risk reduction = -0.15, (95%C.I. -0.25, -0.02), P=0.021). 37-63% of cases are estimated to not be born alive; their inclusion strengthened these associations. Causal inference studies using inverse probability-weighted robust regression and e-values supported causal epidemiological pathways. Findings apply to several cannabinoids, are consistent with pathophysiological and causal mechanisms, are exacerbated by cannabis legalization and demonstrate dose-related intergenerational sequelae.

Highlights

- Limb reduction rates (LRR) were associated with cannabis use, and THC potency
- These relationships were robust to adjustment for ethnic and economic covariates
- They were maintained at geospatiotemporal regression
- LRR elevated as stillborn and aborted cases were considered
- Criteria of causality was fulfilled

Introduction

Limb reductions (LR) are rare and dramatic defects which were first described several thousand years ago in the literature of antiquity (Bermejo-Sanchez, Cuevas et al. 2011, Bermejo-Sanchez, Cuevas et al. 2011). More recently they received prominence as the hallmark and initial indication of the teratogenic action of the drug thalidomide (Bermejo-Sanchez, Cuevas et al. 2011, Bermejo-Sanchez, Cuevas et al. 2011). LR includes both absence of proximal limb elements (intercalary segments, phocomelia) as well as complete limb absence limbs (amelia). LR occurs at a mean rate of 4.20/10,000. Given CDC data indicate 3,791,715 US births in 2018 this suggests over 1,600 LR cases annually (CDC, Centers for Disease Control et al. 2019). Leading studies from the International Clearing House of Birth Defects Surveillance and Research (ICBDSR) noted that little was known about the causes of these disorders (Bermejo-Sanchez, Cuevas et al. 2011, Bermejo-Sanchez, Cuevas et al. 2011). Sometimes LR arise as part of exceedingly rare congenital syndromes or together with multiple congenital anomalies, however their most common presentation is as an isolated disorder. ICBDSR noted that intrauterine vascular catastrophes have been shown to cause some cases with clear evidence of placental arteritis, vascular inflammation, subacute thrombosis and vascular and placental fibrosis seen in some cases (Hoyme, Jones et al. 1982, Bermejo-Sanchez, Cuevas et al. 2011, Bermejo-Sanchez, Cuevas et al. 2011). The upper limbs are known to be affected about twice as often as the lower. On the basis of minimal family inheritance isolated LR is not thought to have a genetic basis. Hotspots for both phocomelia and amelia have been reported, particularly in Victoria, Australia (Bermejo-Sanchez, Cuevas et al. 2011, Bermejo-Sanchez, Cuevas et al. 2011). It should be noted that not all cases are born alive. This is important as most registries list the numbers of cases as rates per 10,000 live births so that cases which occur as still births and cases for which early termination of pregnancy for the anomaly (ETOPFA) is performed can account for 37-63% of the total numbers as described below. This becomes an important issue analytically.

The embryology of limb development is complex and fascinating with limbs developing along each of the three spatial axes as a complex interplay of transcription factor and inducer gradients and an ordered and sequential cascade of molecular and signalling events. The emergence of the limb vessel which supplies the emerging structure is central to the maintenance of the whole process. It therefore becomes easy to understand how

environmental impacts at critical stages could severely impact this sophisticated and coordinated sequential process.

A remarkably prescient paper from Hawaii found a greatly elevated rate of upper limb reduction deformity amongst patients exposed to cannabis either together with other drugs, or by itself (Forrester and Merz 2007). On the basis of 7 and 3 cases exposed amongst 115 total cases, rate ratios of 23.27 (95%C.I. 9.15-49.50) and 21.90 (4.45-65.63) were reported. Our hypothesis that rates of LR have a positive association with cannabis use was based on the previous Hawaiian findings and was formulated prior to the commencement of this work. Since both drug use and birth defect data was available for USA that nation formed our study setting.

Methods

Data. Birth defect data was taken from the annual reports of National Birth Defect Prevention Network organized by Centers for Disease Control Atlanta Georgia (National Birth Defects Prevention Network 2018). These reports are a collation of reports from state-based birth defects registries and normally report the data in five year moving average style. The central year of this period was taken as the nominal year of the report. Data on the annual number of births in each state was taken from the CDC Wonder births registries (CDC, Centers for Disease Control et al. 2019). US Census data for populations, age distributions, ethnicity and median household income was accessed from US Census Bureau via tidycensus package from R. Drug use data was taken from the National Survey of Drug Use and Health (NSDUH) conducted annually by the Substance Abuse and Mental Health Services Administration (SAMHSA) (Substance Abuse and Mental Health Administration, Department of Health and Human Services et al. 2018). NSDUH is a survey which is carefully structured to be representative of the non-institutionalized US adult population. Cannabinoid (Δ^9 -tetrahydrocannabinol (Δ^9 THC), cannabigerol (CBG), cannabichromene, cannabinol, and cannabidiol) concentrations were taken from those reported in Federal Seizures by the Drug Enforcement Agency (ElSohly, Ross et al. 2000, Forrester and Merz 2007).

Derived Variables. Quintiles were calculated based on the interval rather than the population distribution and were calculated with the cut_interval tool from ggplot2 in R. SAMHSA report different rates of intensity of cannabis use by days used last month by ethnicity at the national level. These data were used to calculate mean numbers of days cannabis was smoked. This figure was multiplied by the state cannabis use rate and the THC potency of cannabis in that year to derive a state based cannabis ethnic index referred to in the Tables as an ethnic “score.” The last month cannabis use rates, abbreviated to “mrjmon” in NSDUH, was multiplied by the cannabinoid concentration to derive an estimate of state-based levels of exposure to individual cannabinoids. The only longitudinal series of early termination for anomaly (ETOPFA) we were able to identify was the Western Australian Developmental Anomalies Registry (WARDA) (Women and Newborn Health Service, Department of Health et al. 2015). This series was used to calculate fractional maximal ETOPFA rates for each year to convert live birth anomaly rates to total rates.

Statistics. Data was processed in “R-Studio” 1.2.1335 based on “R” 3.6.1 from CRAN. Variables were log transformed guided by the Shapiro test. Data were manipulated and matched in R-package dplyr, graphs were drawn in sf and ggplot2, geofacetting was done with geofacet, linear regression was performed in base, panel regression was performed in plm, two-step regression was performed in AER, spatial weights were prepared in spdep and spatial regression was performed in splm. For linear and panel regression missing data was casewise deleted. For spatial regression missing data was imputed by temporal kriging (mean substitution) mas described. LR datapoints more than 10 standard deviations from the mean were dropped. $P < 0.05$ was considered significant.

Inverse probability weights (IPW) were calculated on the balanced kriged data using the ipw package in R. Causal inference was conducted using robust regression from the R-package survey and mixed effects regression from package nlme both using IPW weights. E-Values were used to estimated the strength of association an unknown confounder would require with both the predictor (mrjmon) and the outcome (Case rate) to explain away the effects, and were calculated using the package EValue in R.

Data Sharing Statement. Key data including software code in R and a Data Dictionary key has been made available in the Mendeley data repository at this URL: <http://dx.doi.org/10.17632/gtk7w24yvs.1>.

Ethics. This research was approved by the Human Ethics Research Committee of the University of Western Australia June 7th 2019, (RA/4/20/4724).

Results

437 data points relating to LR rate (LRR) were retrieved from NBDPN from 1986-1988 to 2012-2016 is shown in Supplementary Table 1. Prior to 2007-2011 LRR was listed separately for upper and lower limbs. After that time all limb defects were grouped under a single heading. Data from the earlier period were summed to make it comparable with the data from the later time period. For analytical purposes the middle year of each quoted time period is considered to be the nominal year of reference. A datapoint for Oklahoma 2005-2009 was omitted as it lay beyond 13.7 standard deviations outside the mean.

The median (\pm S.E.M.) LRR over the whole period of the NBDPN dataset was 4.20 (95%C.I. 2.51, 5.89) / 10,000 live births. The median figure for 2012-2016 was 4.10 (3.88, 4.31).

This data is also shown as a panel plot in Supplementary Figure 1, and as a geofaceted panel plot with each state in approximately its geographical location, in Supplementary Figure 2. The data is presented map graphically in Figure 1. Missing data points are evident.

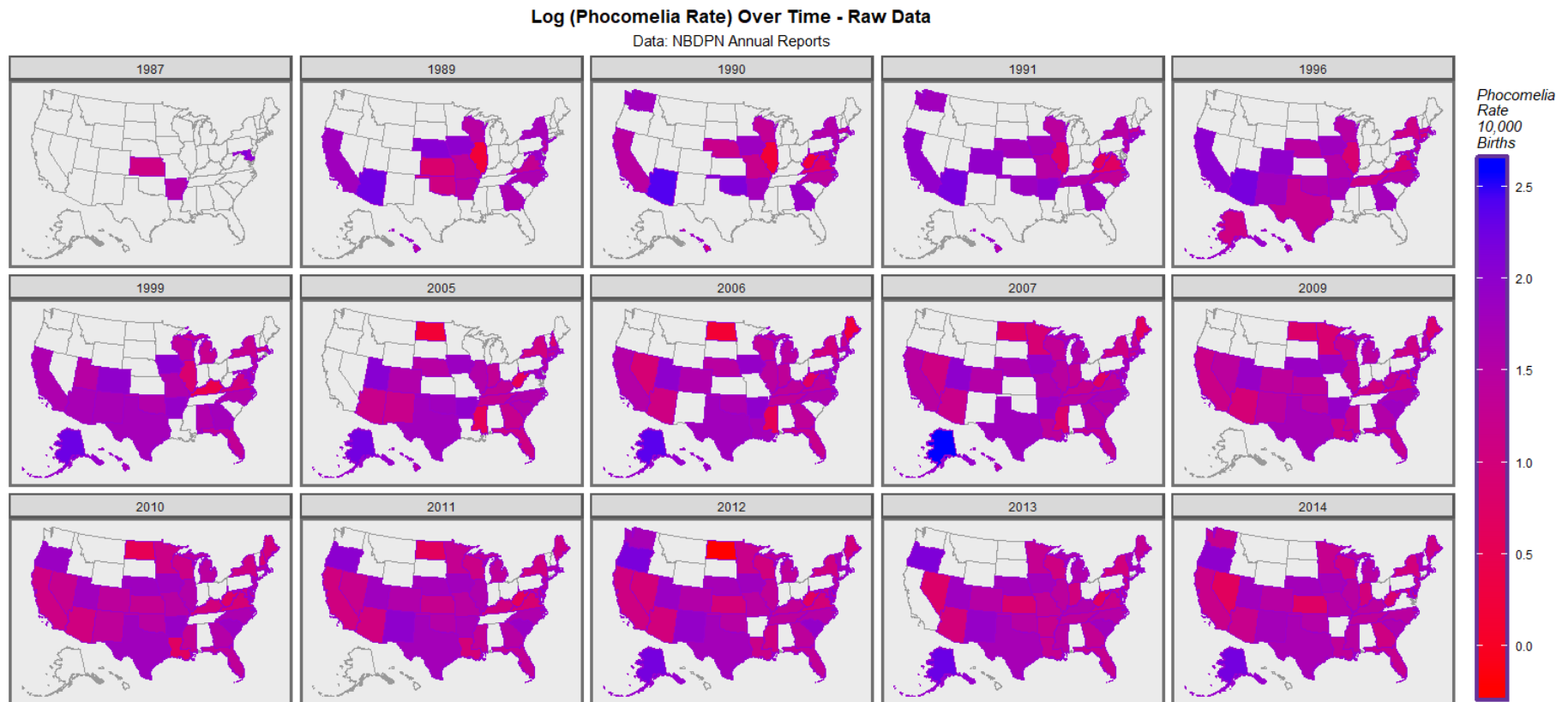


Figure 1.: Map-graph of the limb reduction rate across USA over time. Raw data plot.

192

193

194 States were divided into quintiles based on their last month cannabis use rate in the 2017 NSDUH report as shown in Supplementary Table 2.

195 Quintile 5 was made up of the states of Colorado, Alaska, Vermont, Puerto Rico and Quintile 4 of Maine, Rhode Island, Oregon, New

196 Hampshire. The corresponding quintile median (\pm S.E.M.) values for LRR are shown in Supplementary Table 3.

197

198 Figure 2 presents these data in an introductory manner. Panel A presents the LRR data over time. The time-trend appears essentially flat.

199 Panel B presents it as a function of last month cannabis use. The trend appears to be rising. When these data are charted by quintile of cannabis

200 use the highest quintile appears to be well above the others (Panel C). This is emphasized in Panel D where the highest quintile is charted alone

201 and the lower four are grouped together. Panel E charts the LRR against cannabis exposure by cannabis use quintile. The highest quintile

202 appears to be above the others. This is illustrated in Panel F where the highest quintile is shown compared to the remainder. Panel G presents a

203 boxplot of LRR by quintile. Panel H presents a dichotomized plot of the highest quintile against the remainder.

204



Figure 2.: Univariate limb reduction trends. A: Trends over time. B. Trends by Cannabis use. C. Time trends by cannabis use quintile. D: Time trends by cannabis use dichotomized quintiles: highest quintile v. others. E: Limb reduction rates by cannabis use, by cannabis use quintile. F: Limb reduction rates by dichotomized cannabis use quintile by cannabis use. G: Boxplot of limb reduction rate by cannabis use quintile. Note jump from fourth to fifth quintile. H: Boxplot of limb reduction rate by dichotomized cannabis use quintiles, highest v. others.

The data are analyzed formally with results presented in Supplementary Table 4. The time trend is confirmed to not be significant, the quintile effect is highly significant (β -est.=0.434 (0.283, 0.585), $P=2.9 \times 10^{-8}$), the dichotomized quintile effect is highly significant (β -est.=0.416 (0.273, 0.559), $P=2.2 \times 10^{-8}$), the monthly cannabis use effect is significant (β -est.=8.507 (-0.040, 17.054), $P=0.0492$) and the THC exposure effect is also highly significant (from β -est.=10.637 (3.704, 17.569), $P=0.0029$).

Supplementary Figure 3 presents the mean national trends for daily or near daily use of cannabis (20-30 days per month) and for the numbers using cannabis whilst pregnant.

Figure 3 presents graphically data looking at the log LRR plotted against (A) drugs, (B) cannabinoids and (C) ethnicity. There is little relationship against drug use, with a suggestion of a declining effect with alcohol abuse or dependence shown in the first panel. Contrariwise with monthly cannabis use, $\Delta 9$ THC exposure, cannabichromene, cannabinal and cannabigerol exposure there is a suggestion of a rising effect with exposure. The ethnicity plot shows a falling relationship with Caucasian-American ancestry, but a rising relationship with Hispanic-American and American Indian / Alaska Native identification.

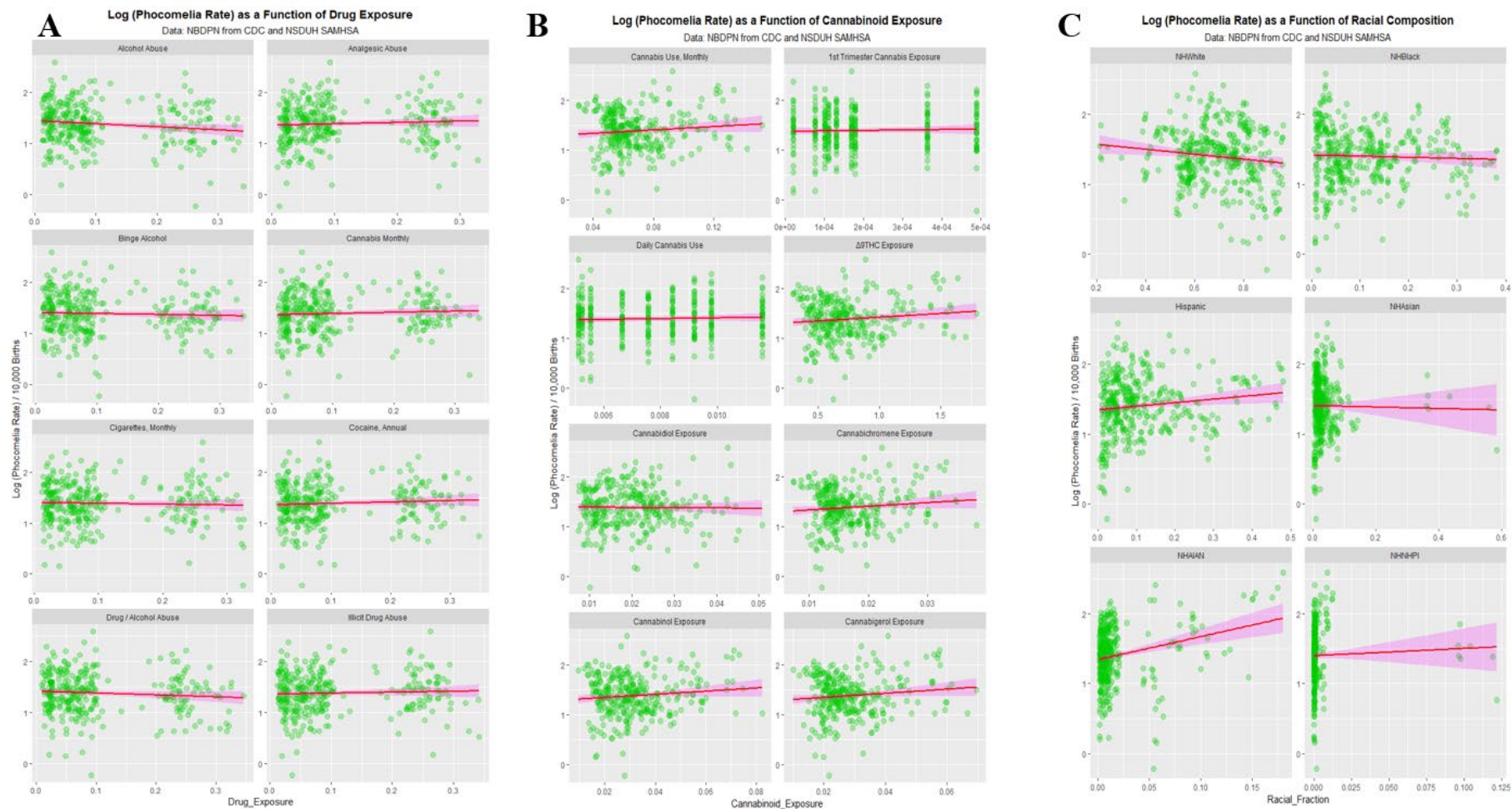


Figure 3.: Univariate exposure plots. Limb reduction rates (raw data) as a function of (A) drug exposure, (B) cannabinoid exposure and (C) census-identified ethnicity.

The effects with cannabinoids are formalized in Supplementary Table 5 which shows significant relationships between LRR and $\Delta 9$ THC, cannabigerol, cannabichromene and cannabinol.

Supplementary Figure 4 shows that the LRR is not impacted by median household income (abbreviation MHY).

These data are well suited to panel regression a technique which was developed within econometrics and which tolerates missing values. The results are shown in Supplementary Table 6. The top half of this table presents regressions done in each domain of socioeconomics, ethnicity and drug exposure. MHY is confirmed not to be significant. Non-Hispanic American Indian / Alaska Native ancestry (NHAIAN) is alone significant amongst the races. When drug exposure, ethnicity and income are combined terms including cannabis exposure (from $P=0.0084$) and ethnicity are significant. When the model is lagged to two years only drugs, including cannabis, are significant.

It was of interest to conduct spatial regression on these data. As spatial regression algorithms do not permit missing data it became necessary to impute the missing values. Supplementary Table 7 illustrates this from temporal kriging (mean substitution over time). Limiting the data to the period 2005-2014, when it was relatively complete and the drug dataset from NSDUH was also complete, 27 kriged data points (9.3%) were added to the 288 NBDPN dataset to provide the kriged dataset of $N=315$ for spatial analysis.

Figure 4 shows this kriged data map-graphically. Figure 5 shows the neighbour links which were converted into the spatial weights matrix for the spatial regression.

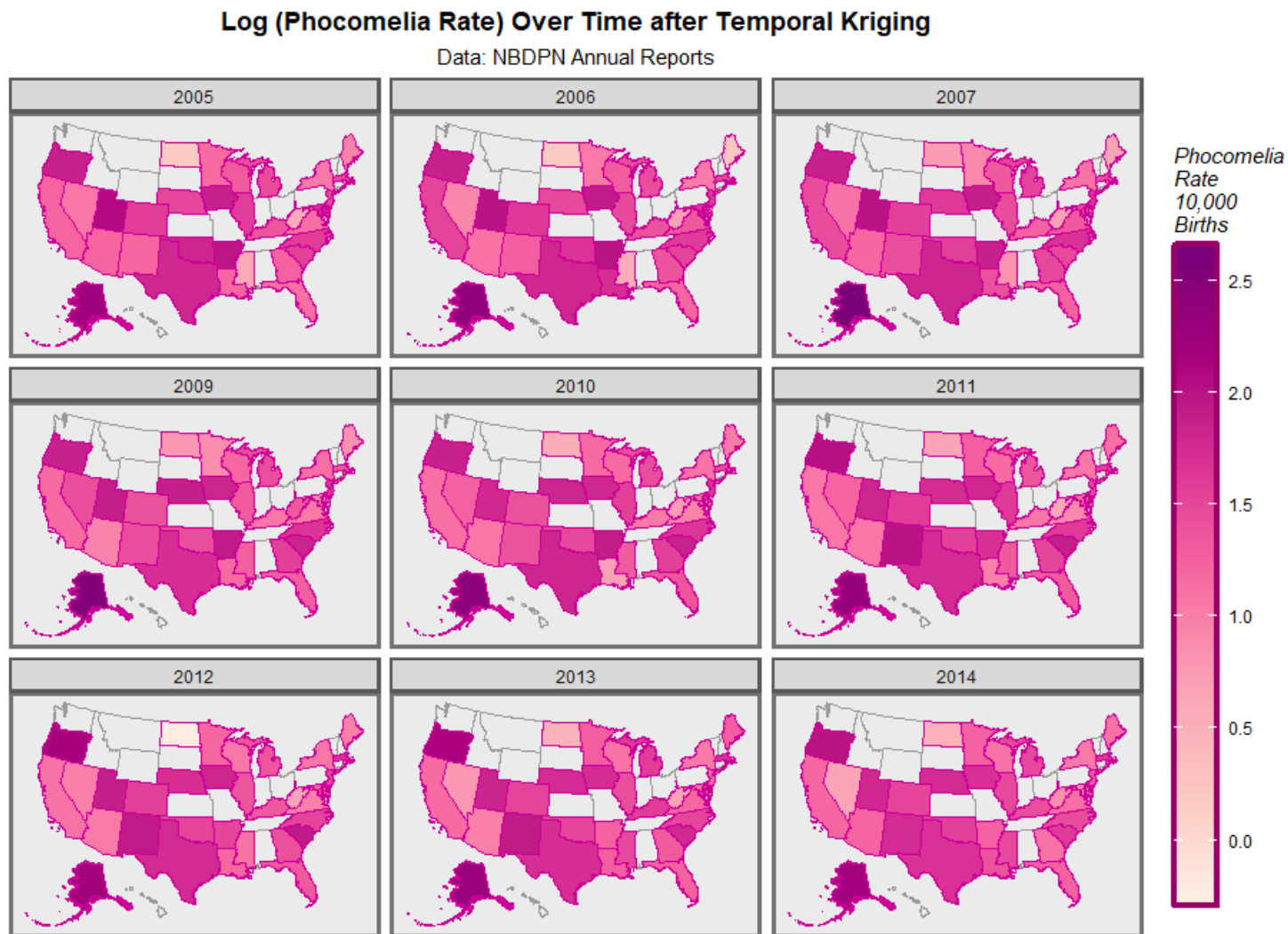
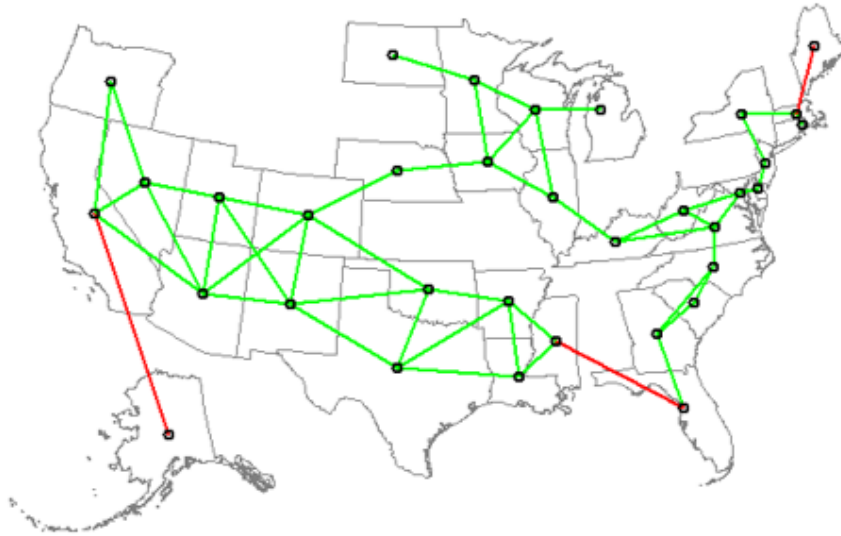


Figure 4.: Map-graph of the limb reduction rate across USA over time after temporal kriging 2005-2014.

A Geospatial Interstate Links, USA (blue) and
Additional Links After Eliding Alaska (Conceptually) (in red) - Queen Weights



B Geospatial Interstate Links, - Queen Weights, USA

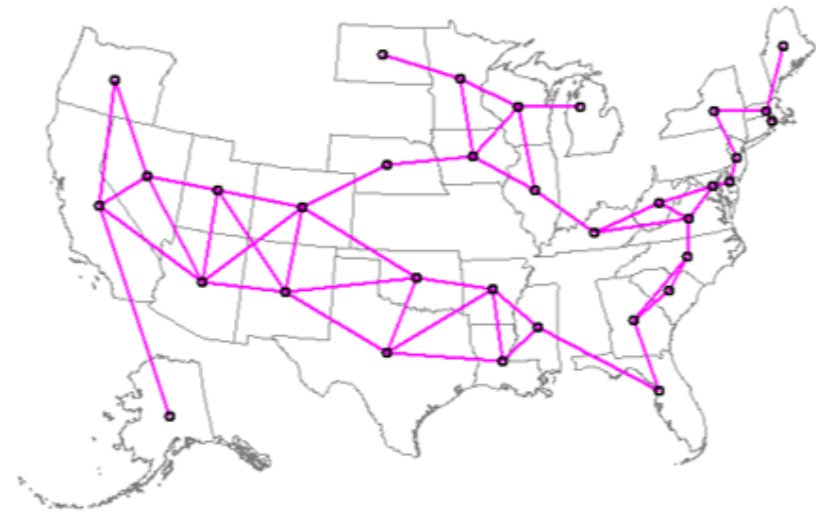


Figure 5.: Geospatial links and weights. (A) Editing of polynomial-derived spatial links. (B) Final links used in spatial weights matrix.

Table 1 presents the results of the spatial analysis. Instrumental and lagged variables are shown in the first column of the Table. When considering ethnicity, Hispanic ethnicity is significant. Median household income (MHY) is not significant. In a combined model with all three domains, drugs including cannabis (from β -est.= -4.122 (-6.760, -1.484), $P=0.002$) and Hispanic ethnicity are significant.

When an interaction between (estimates of) the cannabinoids $\Delta 9$ THC and CBG were used in place of cannabis the results shown in the lower part of this table were derived. In an unlagged model $\Delta 9$ THC exposure was significant (from β -est.=0.589 (0.183, 0.995), $P=4.5 \times 10^{-3}$). In a model lagged to four years which better accounts for the moving average style of data published by NBDPN, the $\Delta 9$ THC: CBG interaction was significant (from β -est.= -1.606 (-2.459, -0.753), $P=2.2 \times 10^{-4}$).

Table 1.:
Geospatial spreml Regression of LRR on Drugs, Cannabinoids, Race and Income

Instrumental \pm Lagged Variables	Parameters			Model			
	Parameter	Estimate (C.I.)	P-Value	LogLik	Parameters	Value	P-Value
	<i>Races</i>						
NHWhite THCExposure	<i>spreml(LR_Rate ~ NHWhite + NHBlack + Hispanic + NHAsian + NHAIAN)</i>						
NHBlack THCExposure	Hispanic	0.12 (0.00, 0.24)	0.0471		phi	3.4769	0.0026
NHAIAN THCExposure					psi	0.7275	<2.0E-16
Hispanic THCExposure					rho	-0.0896	0.5083
NHAsian THCExposure					lambda	-0.0650	0.6345

	<i>Income</i>						
	<i>plm(LR_Rate ~ Median.HH.Income)</i>						
	Median.HH.Income	0.00 (0.00, 0.00)	0.7443		phi	3.9708	0.0007
					psi	0.7258	<2.0E-16
					rho	-0.0567	0.6749
					lambda	-0.0830	0.5479
	<i>0 Lags</i>						
	<i>spreml(LR_Rate ~ Cigarettes * Cannabis * Analgesics + Alcohol.Abuse + Cocaine)</i>						
Δ9THC_Exposure	Cigarettes: Cannabis	-1.04 (-1.98, -0.10)	0.0293		phi	0.0065	0.0015
Cannabigerol_Exposure	Cigarettes: Cannabis: Analgesics	-0.34 (-0.63, -0.05)	0.0253		psi	0.9565	<2.0E-16
					rho	0.0301	0.6944
					lambda	-0.2218	0.5091
	<i>All Variables</i>						
THC_Exposure	<i>0 Lags</i>						
CBG_Exposure	<i>spreml(LR_Rate ~ Cigarettes * Cannabis * Alcohol.Abuse + Analgesics + Cocaine + MHY + 5_Races)</i>						
NHWhite_THCExposure	Cigarettes: Cannabis	-4.12 (-6.77, -1.47)	0.0022		phi	3.3295	0.0992
NHBlack_THCExposure	Cigarettes: Cannabis: Analgesics	-2.27 (-3.98, -0.56)	0.0087		psi	0.7423	<2.0E-16
NHAIAN_THCExposure	Cannabis: Analgesics	0.26 (0.04, 0.48)	0.0185		rho	-0.1138	0.3730
Hispanic_THCExposure	Hispanic	0.14 (0.02, 0.26)	0.0259		lambda	-0.0565	0.6572
NHAsian_THCExposure	Cigarettes: Analgesics	-2.59 (-5.08, -0.10)	0.0410				
	<i>0 Lags - Cannabinoids</i>						
THC_Exposure	<i>spreml(LR_Rate ~ Cigarettes * THC_Exposure * Cannabigerol_Exposure * Alcohol.Abuse + Analgesics + Cocaine + MHY + 5_Races)</i>						
CBG_Exposure	THC_Exposure: Analgesics	0.59 (0.18, 1.00)	0.0045	73.1187	phi	3.5723	0.0005
NHWhite_THCExposure	Cigarettes: CBG_Exposure	-6.65 (-11.43, -1.87)	0.0064		psi	0.7548	<2.0E-16

NHBlack_THCExposure	Cigarettes: THC_Exposure: Analgesics	-2.17 (-3.74, -0.6)	0.0065		rho	-0.0265	0.8352
NHAIAN_THCExposure	Cigarettes: CBG_Exposure: Analgesics	-0.33 (-0.57, -0.09)	0.0068		lambda	-0.1140	0.3777
Hispanic_THCExposure	CBG_Exposure	1.55 (0.33, 2.77)	0.0118				
NHAsian_THCExposure	Cigarettes	-18.58 (-34.16, -3.00)	0.0195				
THC_Exposure, 0:2	2 Lags - Cannabinoids						
	<i>spreml(LR_Rate ~ Cigarettes * THC_Exposure * Cannabigerol_Exposure * Alcohol.Abuse + Analgesics + Cocaine + MHY + 5_Races)</i>						
CBG_Exposure, 0:2	Hispanic	0.12 (0, 0.24)	0.0383	10.8625	phi	1.9556	0.2548
NHBlack_THCExposure, 0:2					psi	0.7141	0.0001
NHAIAN_THCExposure, 0:2					rho	-0.1751	0.3577
Hispanic_THCExposure, 0:2					lambda	0.0595	0.7522
NHAsian_THCExposure, 0:2							
	4 Lags - Cannabinoids						
	<i>spreml(LR_Rate ~ Cigarettes * THC_Exposure * Cannabigerol_Exposure * Alcohol.Abuse + Analgesics + Cocaine + MHY + 5_Races)</i>						
THC_Exposure, 0:4	Cigarettes: THC_Exposure: CBG_Exposure	-1.61 (-2.47, -0.75)	0.00022	16.28796	phi	0.0149	NA
CBG_Exposure, 0:4	Cigarettes: CBG_Exposure	-9.81 (-15.3, -4.32)	0.0005		psi	0.9700	<2.0E-16
NHWhite_THCExposure, 0:4	Cigarettes: CBG_Exposure: Analgesics	-2.96 (-4.68, -1.24)	0.0008		rho	0.0291	0.9043
NHBlack_THCExposure, 0:4	THC_Exposure: Analgesics	0.38 (0.14, 0.62)	0.0010		lambda	-0.2131	0.3512
NHAIAN_THCExposure, 0:4	Analgesics	-2.07 (-3.42, -0.72)	0.0026				
Hispanic_THCExposure, 0:4							
NHAsian_THCExposure, 0:4							

Abbreviations:

MHY: - Median Household Income

Median.HH.Income: - Median Household Income

NHWhite:	- Non-Hispanic Caucasian-American
NHBlack:	- Non-Hispanic African-American
NHAsian:	- Non-Hispanic Asian-American
NHAIAN:	- Non-Hispanic American Indian / Alaskan Native

Technical Notes:

phi:	- Idiosyncratic component of the spatial error term
psi:	- Individual time-invariant component of the spatial error term
rho:	- Spatial autoregressive parameter
lambda:	- Spatial autocorrelation coefficient

Supplementary Table 8 re-formats data from the tables in the ICBDSR references limiting consideration to only registries reporting positive values for ETOPFA or stillbirths (SB), a procedure suggested by leading public health schools (Mokdad, Dwyer-Lindgren et al. 2017, Roth, Dwyer-Lindgren et al. 2017, Dwyer-Lindgren, Bertozzi-Villa et al. 2018). It shows that 37% of cases from the US registries from Texas, Georgia and Utah were not accounted for in liver birth figures. Worldwide the equivalent figure was 63%. This combined ETOPFA+SB figure is referred to as a “hidden factor” or “silent factor” in our Figures and Tables.

The WARDA series (Supplementary Table 9) was used to convert the reported live birth anomaly rate to a total rate inclusive of ETOPFA’s and stillbirths. The time trend for the estimates of the full dataset appears in Supplementary Figure 5, the time-quintile plot in Supplementary Figure 6, the quintile analysis in Supplementary Figure 7, the dichotomized quintile analysis in Supplementary Figure 8, the map-graphical illustration

313 in Supplementary Figure 9 and the map-graph for the kriged data in Supplementary Figure 10. In each case apparently significant changes are
314 shown.

315

316 Supplementary Figures 11-15 perform a similar role for an ETOPFA/SB factor of 63% as is applicable internationally. Even more striking
317 changes are noted.

318

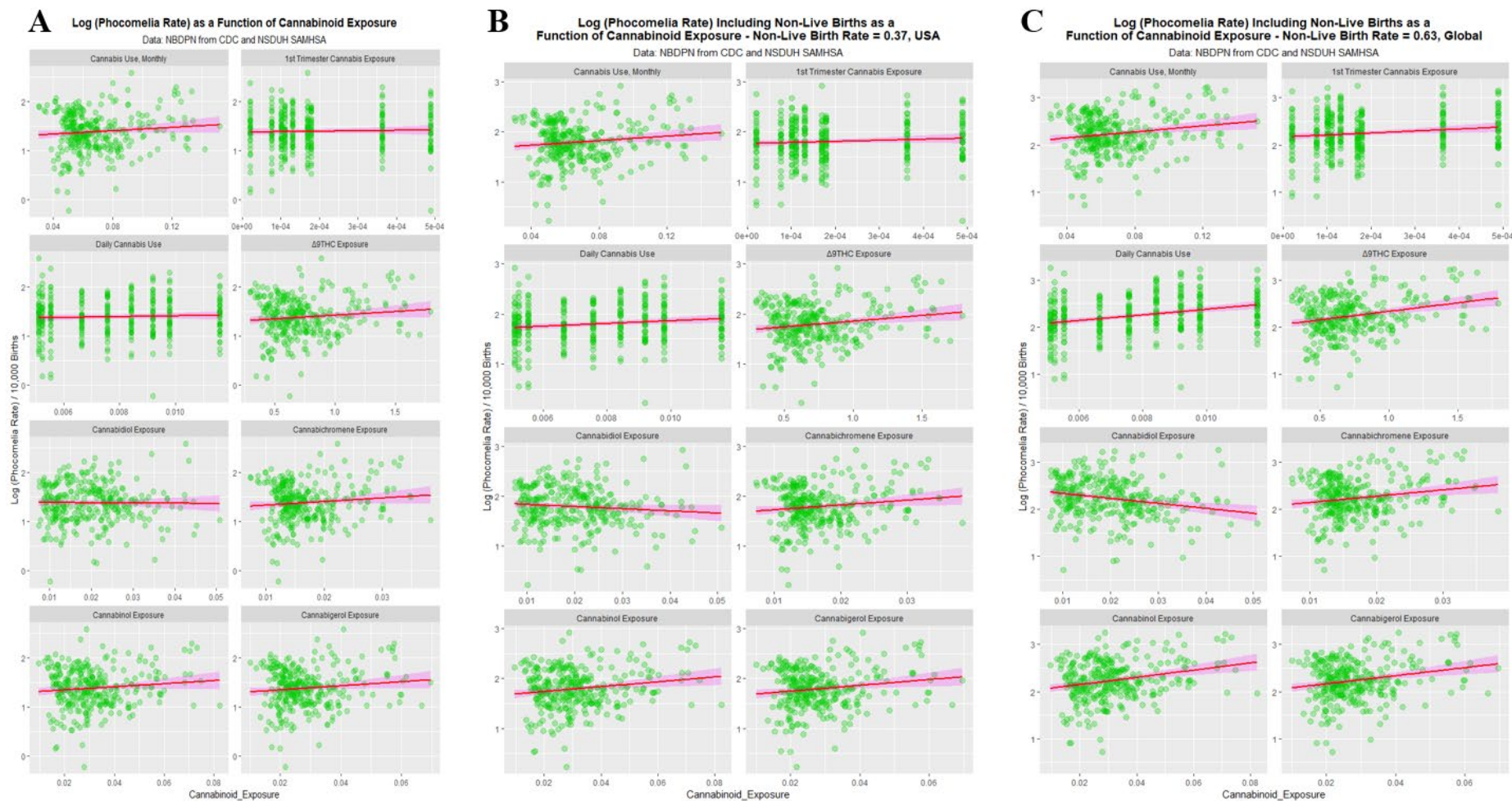
319 Supplementary Figure 16 compares the univariate effects of no hidden factor adjustment, 37% and 63% adjustment on the relationships of the
320 LRR with drug covariates. Adjustment appears to accentuate the changes described above.

321

322 Figure 6 shows the effects of these adjustments on cannabinoid covariates, and they again seem to be accentuated.

323

324



325

326

327 Figure 6.: Association plots for cannabinoids with silent factors of (A) 0%, (B) 37% and (C) 63% corresponding to raw data, USA and
 328 International data respectively

Supplementary Figure 17 does this for ethnicity with similar effects.

It is conceivable that the type of case finding conducted by the state registries might impact case rates. Supplementary Figure 18 compares the case rates by registry case practice and finds interestingly that the case rates in registries with passive case rates are higher than those in registries practising active or mixed case finding. Compared to passive case finding active and mixed case finding, at a silent factor of zero, were associated with rate reduction (β -estimate= -0.27 (-0.41, -0.14), $P=0.0001$ and -0.16 (-0.360, -0.33), $P=0.0152$; model Adj. $R^2 = 0.0846$, $F=7.935$, $df=2,148$, $P=0.0005$).

Table 2 and Supplementary Table 10 quantitate these effects by geospatial regression for 37% and 63% hidden factor adjustment. In each case cannabinoids are highly significant (from β -est.=7.474 (3.172, 11.776), $P=7 \times 10^{-4}$ and β -est.=7.190 (2.817, 11.563), $P=0.001$).

Table 2.:

Geospatial spreml Regression of LRR on Drugs, Cannabinoids, Race and Income,

USA Silent Factor = 37%

Instrumental \pm Lagged Variables	Parameters			Model			
	Parameter	Estimate (C.I.)	P-Value	LogLik	Parameters	Value	P-Value
	<i>Full Model</i>						
	<i>0 Lags</i>						

THC Exposure	<i>spreml(LR Rate ~ Cigarettes * Cannabis * Alcohol.Abuse + Analgesics + Cocaine + MHY + 5 Races</i>						
CBG Exposure	Cigarettes: Cannabis	-3.89 (-6.61, -1.17)	0.0050	65.7980	phi	3.0544	0.0244
NHWhite_DailyCan_THCExposure	Cigarettes: Cannabis: Analgesics	-2.39 (-4.13, -0.65)	0.0072		psi	0.7476	<
NHBlack_DailyCan_THCExposure	Cannabis: Analgesics	0.29 (0.05, 0.53)	0.0129		rho	-0.0935	0.5283
NHAIAN_DailyCan_THCExposure	Cigarettes: Analgesics	-3.04 (-5.59, -0.49)	0.0196		lambda	0.0082	0.9551
Hispanic_DailyCan_THCExposure	Hispanic	0.15 (0.01, 0.29)	0.0235				
NHAsian_DailyCan_THCExposure							
	Full Model						
THC Exposure, 0:2	2 Lags						
CBG Exposure, 0:2	<i>spreml(LR Rate ~ Cigarettes * Cannabis * Alcohol.Abuse + Analgesics + Cocaine + MHY + 5 Races</i>						
NHWhite_DailyCan_THCExposure, 0:2	Hispanic	0.16 (0.04, 0.28)	0.0035	4.1600	phi	2.1790	0.0542
NHBlack_DailyCan_THCExposure, 0:2					psi	0.6443	0.0002
NHAIAN_DailyCan_THCExposure, 0:2					rho	-0.2758	0.1378
Hispanic_DailyCan_THCExposure, 0:2					lambda	0.2459	0.1526
NHAsian_DailyCan_THCExposure, 0:2							
	Full Model						
THC Exposure, 0:4	4 Lags						
CBG Exposure, 0:4	<i>spreml(LR Rate ~ Cigarettes * Cannabis * Alcohol.Abuse + Analgesics + Cocaine + MHY + 5 Races</i>						
NHWhite_DailyCan_THCExposure, 0:4	Cigarettes	67.82 (35.44, 100.2)	0.0000	17.9661	phi	1.5552	NA
NHBlack_DailyCan_THCExposure, 0:4	Cigarettes: Analgesics	14.94 (6.90, 22.98)	0.0003		psi	0.9612	<2e-16
NHAIAN_DailyCan_THCExposure, 0:4	Analgesics	-3.49 (-5.41, -1.57)	0.0004		rho	0.0007	0.9975
Hispanic_DailyCan_THCExposure, 0:4	Cigarettes: Cannabis	7.47 (3.16, 11.78)	0.0007		lambda	-0.2196	0.3113
NHAsian_DailyCan_THCExposure, 0:4	Cannabis	-1.65 (-2.69, -0.61)	0.0020				

	Individual Cannabinoids						
	Full Model						
	0 Lags						
THC Exposure	spreml(LR Rate ~ Cigarettes * THC Exposure * CBG Exposure * Alcohol.Abuse + Analgesics + Cocaine + MHY + 5 Races						
CBG Exposure	Cigarettes:Cannabigerol_Exposure:Analgesics	-1.63 (-2.96, -0.3)	0.0169	65.61285	phi	3.2410	0.0149
NHWhite Can THCEXposure	Cigarettes:Cannabigerol_Exposure	-4.97 (-9.11, -0.83)	0.0183		psi	0.7289	<2.0E-16
NHBlack Can THCEXposure	Cannabigerol_Exposure	1.23 (0.13, 2.33)	0.0263		rho	-0.1180	0.4118
NHAIAN Can THCEXposure	Hispanic	0.14 (0, 0.28)	0.0280		lambda	0.0214	0.8789
Hispanic Can THCEXposure	Cannabigerol_Exposure:Analgesics	0.39 (0.04, 0.74)	0.0311				
NHAsian Can THCEXposure							
	Full Model						
THC Exposure, 0:2	2 Lags						
CBG Exposure, 0:2	spreml(LR Rate ~ Cigarettes * THC Exposure * CBG Exposure * Alcohol.Abuse + Analgesics + Cocaine + MHY + 5 Races						
NHWhite Can THCEXposure, 0:2	Hispanic	0.13 (0.01, 0.25)	0.0344	5.931167	phi	2.3134	0.0497
NHBlack Can THCEXposure, 0:2	Cigarettes:THC_Exposure:Analgesics	-0.17 (-0.35, 0.01)	0.0546		psi	0.6190	0.0004
NHAIAN Can THCEXposure, 0:2					rho	-0.2408	0.2016
Hispanic Can THCEXposure, 0:2					lambda	0.1928	0.2843
NHAsian Can THCEXposure, 0:2							
	Full Model						
THC Exposure, 0:4	4 Lags						
CBG Exposure, 0:4	spreml(LR Rate ~ Cigarettes * THC Exposure * CBG Exposure * Alcohol.Abuse + Analgesics + Cocaine + MHY + 5 Races						
NHWhite Can THCEXposure, 0:4	Cigarettes:Cannabigerol_Exposure:Analgesics	-1.63 (-2.96, -0.30)	0.0169	16.35349	phi	3.2410	0.0149
NHBlack Can THCEXposure, 0:4	Cigarettes:Cannabigerol_Exposure	-4.97 (-9.11, -0.83)	0.0183		psi	0.7289	<2.0E-16
NHAIAN Can THCEXposure, 0:4	Cannabigerol_Exposure	1.23 (0.13, 2.33)	0.0263		rho	-0.1180	0.4118

Hispanic Can THCExposure, 0:4	Hispanic	0.14 (0.00, 0.28)	0.0280		lambda	0.0214	0.8789
NHAsian Can THCExposure, 0:4	Cannabigerol_Exposure:Analgesics	0.39 (0.04, 0.74)	0.0311				

Abbreviations:

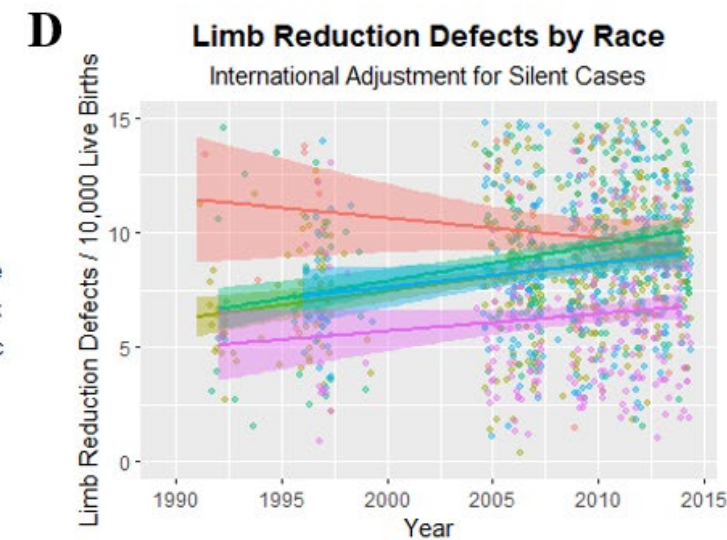
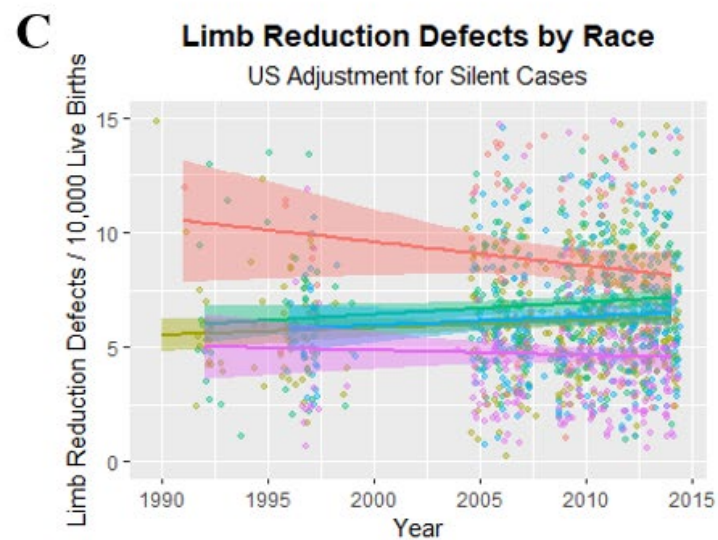
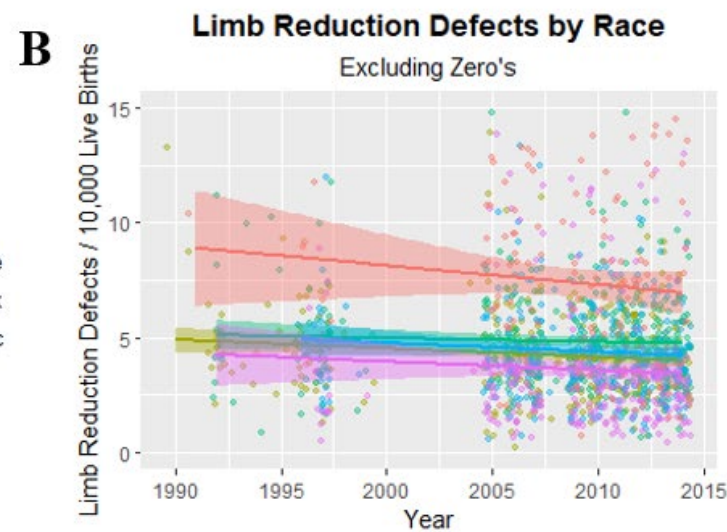
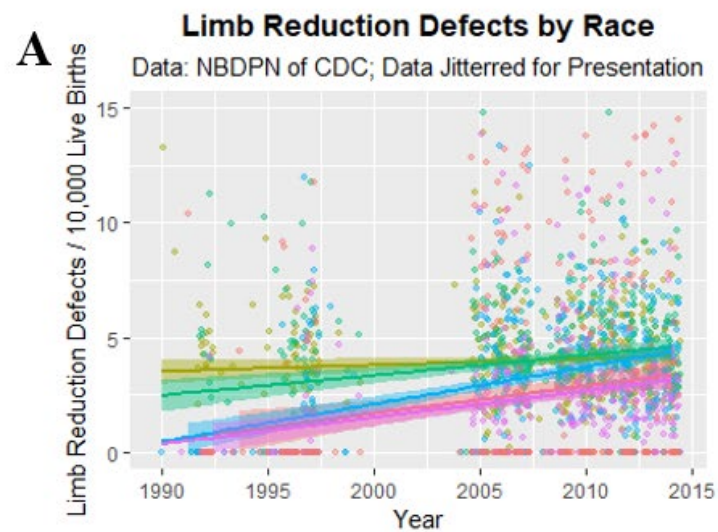
THC	- Δ 9-tetrahydrocannabinol
NHWhite	- Non-Hispanic White
NHBlack	- Non-Hispanic Black
NHAIAN	- Non-Hispanic American Indian / Alaskan Native
NHAsian	- Non-Hispanic Asian
0:n	- Years of lagging (inclusive)
DailyCan	- Daily Cannabis Use Rate

Technical Notes:

phi:	- Idiosyncratic component of the spatial error term
psi:	- Individual time-invariant component of the spatial error term
rho:	- Spatial autoregressive parameter
lambda:	- Spatial autocorrelation coefficient

Figure 7A presents all of the official NBDPN data on the ethnic rates of LR. May zeroes are entered in the data, doubtless most of them meaninglessly or due to low number counts. However low rates are not zero rates as well argued by University of Washington researchers (Mokdad, Dwyer-Lindgren et al. 2017, Roth, Dwyer-Lindgren et al. 2017, Dwyer-Lindgren, Bertozzi-Villa et al. 2018). Following their approach we therefore omit the zeros. Figure 7B shows that this method brings out the high rates in the Non-Hispanic American Indian / Alaska Native (NHAIAN) group. There is no significant trend with time. When the data are adjusted for the US and international hidden factors the appearances shown in Figure 7C and 7D are revealed.

376



377

Figure 7.: Limb reduction rates by ethnic background (NBDPN data). (A) Limb reduction rates over time by ethnicity. (B) Limb reduction rates by ethnicity over time omitting uninformative zero's from data. (C) Same as (B) but adjusted for US "silent case" rate (37%) arising from ETOPFA's and stillbirths. (D) Same as (B) but adjusted for global "silent case" rate (63%) arising from ETOPFA's and stillbirths.

Supplementary Table 11 presents two-step regression results performed in R::AER using the Asian / Pacific Islander group as the controls and the unadjusted LRR as the dependent variable. Very highly significant results are shown with the effects for NHAIAN and Non-Hispanic African-Americans significant (from β -est.=0.999 (0.885, 1.113), $P<2.2\times 10^{-16}$, and β -est.=0.449 (0.357, 0.541), $P<2.2\times 10^{-16}$). However when the days of use of cannabis by each ethnicity and the THC potency of the cannabis smoked are used as interactive instrumental variables this effect completely disappears. When the full complement of instrumental variables is employed in the exhaustive model only the NHAIAN group is significant.

This important result shows that whilst racial factors are apparently strong, they are completely accounted for by substance and particularly cannabinoid exposure and are thus not robust to adjustment.

Figure 8 presents the effects of cannabis legalization policies on LRR. The legalized status appears to have a higher LRR than comparators. Panel B dichotomizes the legal status into legalized status compared to the others.

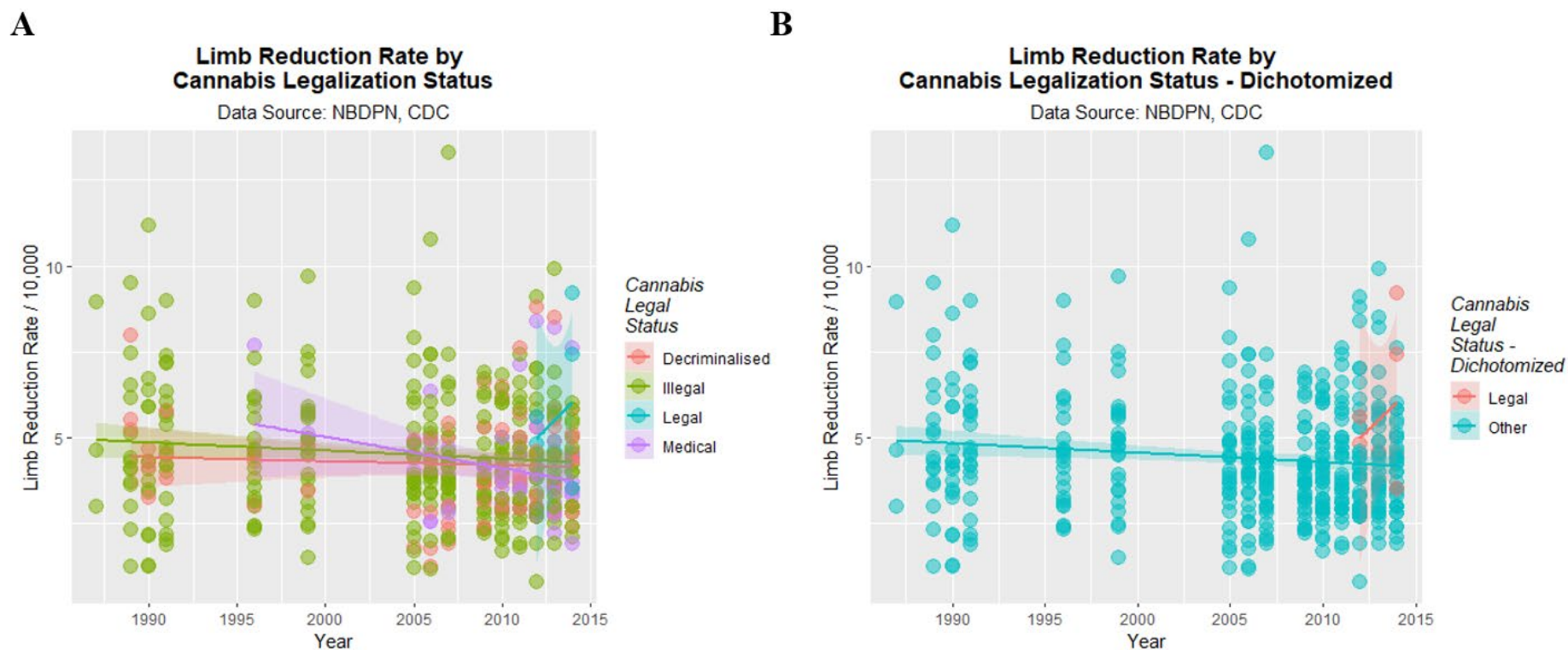


Figure 8.: Limb reduction rates by (A) cannabis legal status and (B) cannabis legal status dichotomized into legalized vs. other legal statuses. Data not corrected for silent factors.

Table 3 quantifies these effects with linear regression with silent factors of 0%, 36% and 63%. Increasingly significant changes are noted. Supplementary Table 12 presents the numbers of cases and controls in each of the legal categories dichotomized to legal states vs. others.

Table 3.:

Time: Status Interactions by Silent Factor for Dichotomized Legal Status

<i>Silent Factor</i>	Parameter			Model Parameters			
	Parameter	Estimate (C.I.)	P-Value	Adj. R-Squared	F	dF	P-value
	<i>lm(LR Rate ~ Legal Status)</i>						
0%	Year:Status_Legal	0.0007 (0.0001, 0.0013)	0.0396	0.0139	4.055	2,432	0.0180
37%	Year:Status_Legal	0.0011 (0.0001, 0.0021)	0.0236	0.0381	9.587	2,432	8.4E-05
63%	Year:Status_Legal	0.0020 (0.0006, 0.0034)	0.0071	0.1951	53.590	2,432	<2.0E-16

Table 4A presents the increased relative risk (RR) associated with cannabis legalization and Table 4B presents the relative risk reduction associated with non-cannabis legalized status. As can be seen in Table 4A the elevated RR of LRR is 1.17 (1.02, 1.34), 1.26 (1.13, 1.40) and

1.39 (1.289, 1.51) for 0%, 36% and 63% silent factors respectively. The table also presents attributable risks in the exposed, attributable risks in the population and applicable P-values. Table 4B presents the inverse of these results as relative risk reductions (RRR).

Table 4.:

**Relative Risk Calculations for: (A) Risk Elevation by Legal Status and
(B) Risk Reduction by Not Legal Status**

	LR+	LR-	Total	Risk	Incr RR	AFE	AFP	P-values
<i>0% Silent Factor</i>								
Legal_States	215	428,805	429,020	0.0005				
Others	14,398	33,630,778	33,645,176	0.0004	1.17 (1.02 to 1.34)	14.61 (2.30 to 25.36)	0.21 (0.02 to 0.41)	0.0212
<i>36% Silent Factor</i>								
Legal_States	338	428,682	429,020	0.0008				
Others	21,106	33,624,070	33,645,176	0.0006	1.26 (1.13 to 1.40)	20.38 (11.35 to 28.49)	0.32 (0.15 to 0.49)	3.1E-05
<i>63% Silent Factor</i>								
Legal_States	566	428,454	429,020	0.0013				
Others	31,954	33,613,222	33,645,176	0.0009	1.39 (1.28 to 1.51)	28.01 (21.78 to 33.75)	0.49 (0.34 to 0.63)	6.7E-15

(B) Relative Risk Reduction Accompanying Absence of Cannabis Legalization

	LR+	LR-	Total	Risk	RRR	AFE	AFP	P-values
<i>0% Silent Factor</i>								

Others	14,398	33,630,778	33,645,176	0.0004				
Legal_States	215	428,805	429,020	0.0005	0.15 (0.02 to 0.25)	-17.11 (-33.98 to -2.36)	-16.85 (-33.43 to -2.34)	0.0212
36% Silent Factor								
Others	21,106	33,624,070	33,645,176	0.0006				
Legal_States	338	428,682	429,020	0.0008	0.20 (0.11 to 0.28)	-25.59 (-39.83 to -12.80)	-25.19 (-39.15 to -12.63)	3.1E-05
63% Silent Factor								
Others	31,954	33,613,222	33,645,176	0.0009				
Legal_States	566	428,454	429,020	0.0013	0.28 (0.21 to 0.34)	-38.91 (-50.94 to -27.84)	-38.23 (-49.99 to -27.40)	6.7E-15

440

441

442

443 Abbreviations:

444

445 LR+

- Limb Reductions

446 LR-

- No Limb Reductions (Otherwise normal births)

447 Incr

- Increased

448 RR

- Relative Risk

449 RRR

- Relative Risk Reduction

450 AFE

- Attributable Fraction in Exposed

451 AFP

- Attributable Fraction in Population

452 Silent Factor

- Cases not born live due to still births and early termination of pregnancy for anomaly.

453

454

As the kriged dataset is balanced it lends itself to analysis by the techniques of formal causal inference including the calculation of inverse probability weights (IPW). IPW were therefore calculated on the kriged data with a 37% silent factor.

Table 5 shows the results of robust regression conducted in the package survey in R using IPW weights. The final model from a purely additive model, a model using a four way interaction between tobacco: binge alcohol: cannabis: analgesics, and a five-way interactive model between tobacco: binge alcohol: Δ 9THC: cannabigerol: analgesics are shown. Median household income, ethnicity and ethnic cannabis use scores are covariates. As shown in the second model eight terms including cannabis appear including four terms relating to ethnic cannabis use. Eight terms including cannabinoids also appear in the final model.

Table 5.: Robust Generalized Linear Regression Utilizing Inverse Probability Weights

Parameter	Estimate (C.I.)	P-Value
<i>Additive Model</i>		
Median.HH.Income	3.22 (2.65, 3.78)	3.0E-12
Cigarettes	8.5 (5.4, 11.61)	8.3E-06
Alcohol.Abuse	-17.54 (-34.13, -0.96)	0.0468
<i>4-Way Interactions with Cannabis</i>		
Median.HH.Income	3.73 (2.19, 5.27)	0.0002

Hispanic.AmTPPot	11.15 (5.32, 16.98)	0.0015
Cigarettes: Alcohol.Abuse: Cannabis: Analgesics	1184.19 (458.6, 1909.77)	0.0050
AsianTPPot	2.68 (0.96, 4.39)	0.0068
Analgesics	63.11 (21.11, 105.11)	0.0087
Cigarettes: Cannabis	221.52 (63.28, 379.75)	0.0134
Cigarettes: Alcohol.Abuse: Analgesics	5615.47 (1490.34, 9740.61)	0.0157
AIANTPPot	2.77 (0.61, 4.94)	0.0220
Cigarettes: Alcohol.Abuse	7522.65 (1164.64, 13880.66)	0.0324
Cigarettes: Analgesics	-192.24 (-342.39, -42.1)	0.0219
Alcohol.Abuse	-2421.03 (-4205.3, -636.76)	0.0160
Cannabis	-58.77 (-101.89, -15.65)	0.0156
Alcohol.Abuse: Analgesics	-1606.67 (-2734.22, -479.12)	0.0120
Alcohol.Abuse: Cannabis: Analgesics	-310.19 (-507.04, -113.34)	0.0063
Cauc.AmTPPot	-16.4 (-25.97, -6.82)	0.0035
5-Way Interactions with Cannabinoids		
Median.HH.Income	2.72 (1.55, 3.89)	0.0002
Analgesics	2.1 (1.17, 3.03)	0.0002
Cigarettes: Alcohol.Abuse: THC.Exposure: Cannabigerol.Exposure	581.94 (240.92, 922.97)	0.0029
THC.Exposure: Cannabigerol.Exposure	10.72 (2.6, 18.84)	0.0169
Cannabigerol.Exposure	37.48 (5.05, 69.91)	0.0337
Cigarettes: THC.Exposure	52.86 (6.86, 98.86)	0.0346
Cigarettes: Alcohol.Abuse: THC.Exposure	1486.79 (157.95, 2815.63)	0.0392
Alcohol.Abuse: Cannabigerol.Exposure	-464.72 (-856.23, -73.21)	0.0296
Alcohol.Abuse	-1517.4 (-2761.78, -273.01)	0.0259
Alcohol.Abuse: THC.Exposure	-512.91 (-862.75, -163.08)	0.0088
Alcohol.Abuse: THC.Exposure: Cannabigerol.Exposure	-272.41 (-424.46, -120.36)	0.0020

472

473

474

A similar exercise is conducted with IPW-weighted mixed effects regression with results shown in Supplementary Table 13. The models were of similar structure used to those employed for robust regression in Table 5. The benefit of using these models was that mixed effects models have a model standard deviation which can be entered into e-value calculations, which is absent from robust models generated in the survey package. As shown in Table 5 terms including cannabis or cannabinoids are significant and appear in final models in the additive, four-way cannabis, and five-way cannabinoid models from very high levels of statistical significance.

Finally e-values were calculated from some of the major results above and are illustrated in Table 6. It is clear that many of the e-values are very large, implying that some unmeasured confounder would require a large degree of co-association with both the outcome and the exposure (mrjmon) to impact the results.

Table 6.: Selected E-Values

Parameter	Table	Regression Coefficient (C.I.)	R.R. (C.I.)	eValues
<i>Linear Regression</i>	eTable 4			
LR over Time	eTable 4	-0.21 (-0.043, 0.00012)	0.9892 (0.9785, 1.00001)	1.12, 1.00
LR by Monthly Cannabis Use	eTable 4	8.51 (3.11, 4.32)	95.17 (1.04, 8685.75)	189.85, 1.25
LR by Cannabis Use Quintile	eTable 4	0.43 (0.28, 0.59)	2.72 (1.92, 3.83)	4.87, 3.25
LR by Cannabis Use Quintile Dichotomized	eTable 4	0.42 (0.27, 0.56)	2.59 (1.86, 3.59)	4.62, 31.4
<i>Legal Relationship</i>	Table 4			
Cannabis Legalization, Silent Factor = 0%	Table 4	1.17 (1.02, 1.34)	1.17 (1.02, 1.34)	1.62, 1.16
Cannabis Legalization, Silent Factor = 37%	Table 4	1.26 (1.13, 1.40)	1.26 (1.13, 1.40)	1.83, 1.51

Cannabis Legalization, Silent Factor = 63%	Table 4	1.39 (1.28, 1.51)	1.39 (1.28, 1.51)	2.13, 1.88
<i>Geotemporospatial Regression - 37% Silent Factor</i>	Table 2			
<i>No Lag</i>	Table 2			
Cannabis: Analgesics	Table 2	0.28 (0.06, 0.51)	2.11 (1.17, 3.82)	3.65, 1.62
<i>4 Lags</i>				
Cannabis: Tobacco	Table 2	7.47 (3.17, 11.78)	4.44E+19 (2.30E+08, 8.58E+30)	8.89E+19, 4.61E+08
<i>Individual Cannabinoids</i>	Table 2			
<i>No Lags</i>	Table 2			
Cannabigerol	Table 2	1.23 (0.15, 2.32)	23.85 (1.46, 389.22)	47.19, 2.28
Cannabigerol: Analgesics	Table 2	0.38 (0.035, 0.74)	2.70 (1.09, 6.66)	4.85, 1.42
<i>4 Years Lag</i>	Table 2			
Tobacco: THC	Table 2	9.14 (4.22, 14.07)	4.31E+31 (4.30E+14, 4.34E+48)	8.62E+31, 6.61E+14
Cannabigerol: Analgesics	Table 2	0.61 (0.26, 0.96)	133.81 (8.21, 2.18E+03)	267.13, 15.91
<i>Mixed Effects iptw Regression</i>				
<i>Additive Model</i>	eTable 13			
Afric.American.THc.Exposure	eTable 13	0.61 (0.57, 0.65)	1.000 (1.000, 1.000)	1.0048, 1.0046
<i>Interactive Model</i>				
NHWhite.THc.Exposure	eTable 13	4.06 (3.7, 4.42)	1.005 (1.004, 1.006)	1.024, 1.022
Cigarettes: Cannabis: Analgesics	eTable 13	480.35 (337.18, 623.51)	1.065 (1.045, 1.085)	1.32, 1.26
Cigarettes: Cannabis	eTable 13	1462.8 (1017.39, 1908.22)	1.21 (1.14, 1.28)	1.72, 1.54
Alcohol.Abuse: Cannabis: Analgesics	eTable 13	1102.5 (626.32, 1578.68)	1.16 (1.09, 1.23)	1.57, 1.39
Alcohol.Abuse: Cannabis	eTable 13	3224.18 (1743.59, 4704.78)	1.53 (1.26, 1.85)	2.42, 1.83

Discussion

Statement of Principal Findings

The key results of the study were that LRR was significantly associated with cannabis use, and in a geospatiotemporal context with exposure to the cannabinoids Δ^9 THC and cannabigerol, although there was no time trend. Moreover these changes were robust to adjustment for common sociodemographic covariates including socioeconomic and ethnographic factors. There was a marked quintile effect with an apparently sharp jump from the fourth to fifth quintile. The marked effects of race were completely dissipated by adjustment for cannabinoid exposure. 40-60% of the cases are not accounted for in live birth rates. When either a US or an international adjustment correction is applied to these numbers the changes described for the raw rates become intensified and more significant. Importantly the legal paradigm relating to cannabis regulation was shown to be highly significant with a relative risk reduction (RRR) of 15% (95%C.I. 0.02 to 0.25) for states where cannabis had not been legalized increasing to 28% (C.I. 0.21 to 0.34) protection for a 63% international silent factor protecting from 38% (27.40 to 49.99%) of the population attributable caseload (also at 63% silent factor). Formal assessment of the potentially causal nature of the cannabis – LRR relationship by IPW-weighted robust and mixed effects regression and the calculation of e-values, confirmed that the association fulfilled formal criteria for a causal relationship.

Consistency with Other Reports

Our results are supported by the prior results from Hawaii (Forrester and Merz 2007) and also apparently by reports from German obstetric hospitals and French birth defect registries where outbreaks of LR have been described (Agence France-Presse in Paris 2018, Willsher K. 2018, Robinson M. 2019). The odds ratio reported in France was 58-times elevation (Agence France-Presse in Paris 2018, Willsher K. 2018) which is within the confidence interval reported from Hawaii (95%C.I. 4.45, 65.63). Similarly French cows in these areas are more frequently born without forelimbs. Interestingly, both France and Germany along with a number of other EU counties allow cannabinoids to enter the food chain whereas Switzerland does not allow this practice. Public health enquiries in this regard are on-going. Nearby Switzerland has not seen any such increase in cases.

Possible Explanations for Study Findings

It is important to note that cannabis can act by several cellular mechanisms to restrict cell growth and inhibit cell division (McClellan and Zimmerman 1976, Zimmerman and Raj 1980, Tahir and Zimmerman 1991) and can act genomically and epigenomically (Zimmerman A.M. and Zimmerman S. 1987, Zimmerman and Zimmerman 1990). Its mitochondrial inhibitory actions (Bartova and Birmingham 1976, Hebert-Chatelain, Reguero et al. 2014, Wolff, Schlagowski et al. 2015, Hebert-Chatelain, Desprez et al. 2016) carry serious downstream genotoxic and epigenotoxic implications by reducing cellular energy charge for DNA-dependent reactions (Canto, Menzies et al. 2015), by limiting the availability of numerous chemical moieties which underpin epigenomic regulation and by inducing mitonuclear stress response cascade (Canto, Menzies et al. 2015). Cannabinoid receptors exist at high density on vascular endothelium (Yamaji, Sarker et al. 2003, van Diepen, Schlicker et al. 2008, Bukiya A.N., Jackson S. et al. 2014, Gasperi, Evangelista et al. 2014, Pacher, Steffens et al. 2018) and can induce arteritis (Pacher, Steffens et al. 2018) be pro-coagulant and anti-prostacyclin (Wang, Yuan et al. 2011, Murphy, Itchon-Ramos et al. 2018) and has been associated with human vascular aging (Reece A.S., Norman et al. 2016). Moreover it has been linked with gastroschisis in many studies (Reece A. S. and Hulse G.K. 2019, Reece A. S. and Hulse G.K. 2019) which is a congenital defect now considered to have a vasculopathic basis (Hoyme, Higginbottom et al. 1981, Van Allen and Smith 1981, Werler, Mitchell et al. 2009, Lubinsky 2014). These data imply that cannabis could be acting via the vasculopathic pathway outlined in the Introduction. Thus various mechanistic pathways exist to underpin the geospatial and causal epidemiological results reported in this study.

Absolute and Relative Strengths and Weaknesses of the Study

This study has various strengths including its use of population-derived indices such as ethnicity and median household income and a national birth anomalies dataset. It adjusts for estimates of ETOPFA for which hard data does not exist and considers the impact of such data on the findings described. Our study is the first to apply the analytical techniques of geospatial regression and causal inference to this topic, and the first to our knowledge to investigate the impact of drug exposure on this major teratological outcome in the geospatial context. Study limitations are those related to its ecological design. We did not have access to individual case data and were not able to directly correlate exposure with outcomes. Moreover we did not have access to fine geospatial resolution birth defect data such as was

recently published by CDC (Short, Stallings et al. 2019). Uncontrolled confounding is always a possibility in such investigations but seems most unlikely to account for the described association in view of the large e-values calculated. In view of the public health importance of the issue and the numbers of exposed individuals we feel that the area needs further research at both the basic sciences and finer spatial epidemiological level.

Generalizability

In that the USA is the world's leading nation on many metrics and provides the best publicly available data on both drug exposure and birth defects, we feel that the present findings are likely to be generalizable to similar contexts in other western nations.

Implications for Policy and Future Directions

Our interpretation of these results is that cannabis exposure has a strong geospatial link to LRR which is robust to adjustment for socioeconomic and sociodemographic factors and fulfils the criteria for causality. These results are particularly concerning given prior reports of a wide spectrum of cardiovascular, neurological and other anomalies reported as being cannabis-related from various locations including Hawaii, Colorado, Canada, France, Switzerland and Australia (Forrester and Merz 2007, Report of the Queensland Perinatal Maternal and Perinatal Quality Council and Queensland Health 2018, Reece A. S. and Hulse G.K. 2019, Reece A.S. and Hulse G.K. 2019, Reece A. S. and Hulse G.K. 2020). The causal nature of this relationship concerns us greatly. We feel that such results should be part of a program of improved public awareness in relation to the risks associated with the use of diverse cannabinoids and especially far-reaching intergenerational implications.

Acknowledgements

All authors had full access to all the data in the study and take responsibility for the integrity of the data and the accuracy of the data analysis.

Role of the Funding Source

No funding was provided for this study.

Contributorship Statement

ASR assembled the data, designed and conducted the analyses, and wrote the first manuscript draft. GKH provided technical and logistic support, co-wrote the paper, assisted with gaining ethical approval, provided advice on manuscript preparation and general guidance to study conduct. ASR had the idea for the article, performed the literature search, wrote the first draft and is the guarantor for the article.

Competing Interests Declaration

None.

References

- Agence France-Presse in Paris (2018) "France to investigate cause of upper limb defects in babies." The Guardian.
- Bartova, A. and M. K. Birmingham (1976). "Effect of delta9-tetrahydrocannabinol on mitochondrial NADH-oxidase activity." J Biol Chem **251**(16): 5002-5006.
- Bermejo-Sanchez, E., L. Cuevas, E. Amar, M. K. Bakker, S. Bianca, F. Bianchi, M. A. Canfield, E. E. Castilla, M. Clementi, G. Cocchi, M. L. Feldkamp, D. Landau, E. Leoncini, Z. Li, R. B. Lowry, P. Mastroiacovo, O. M. Mutchinick, A. Rissmann, A. Ritvanen, G. Scarano, C. Siffel, E. Szabova and M. L. Martinez-Frias (2011). "Amelia: a multi-center descriptive epidemiologic study in a large dataset from the International Clearinghouse for Birth Defects Surveillance and Research, and overview of the literature." Am J Med Genet C Semin Med Genet **157C**(4): 288-304.
- Bermejo-Sanchez, E., L. Cuevas, E. Amar, S. Bianca, F. Bianchi, L. D. Botto, M. A. Canfield, E. E. Castilla, M. Clementi, G. Cocchi, D. Landau, E. Leoncini, Z. Li, R. B. Lowry, P. Mastroiacovo, O. M. Mutchinick, A. Rissmann, A. Ritvanen, G. Scarano, C. Siffel, E. Szabova and M. L. Martinez-Frias (2011). "Phocomelia: a worldwide descriptive epidemiologic study in a large series of cases from the International Clearinghouse for Birth Defects Surveillance and Research, and overview of the literature." Am J Med Genet C Semin Med Genet **157C**(4): 305-320.
- Bukiya A.N., Jackson S., Sullivan R., Tate D., Moore B., Mari G., Dopico A.M. and Schlabritz-Loutsevitch N. (2014). "Regulation of fetal cerebral arterial diameter by ethanol and endocannabinoids (eCBs) in a baboon model. Regulation of fetal cerebral arterial diameter by ethanol and endocannabinoids (eCBs) in a baboon model." Alcoholism: Clinical and Experimental Research **38** (Suppl. 1): 31A.
- Canto, C., K. J. Menzies and J. Auwerx (2015). "NAD(+) Metabolism and the Control of Energy Homeostasis: A Balancing Act between Mitochondria and the Nucleus." Cell Metab **22**(1): 31-53.
- CDC, Centers for Disease Control, Atlanta and Georgia. (2019). "CDC Wonder, Natality Information, Live Births." Retrieved 30th December 2019, 2019, from <https://wonder.cdc.gov/natality.html>.
- Dwyer-Lindgren, L., A. Bertozzi-Villa, R. W. Stubbs, C. Morozoff, S. Shirude, J. Unutzer, M. Naghavi, A. H. Mokdad and C. J. L. Murray (2018). "Trends and Patterns of Geographic Variation in Mortality From Substance Use Disorders and Intentional Injuries Among US Counties, 1980-2014." Jama **319**(10): 1013-1023.
- ElSohly, M. A., S. A. Ross, Z. Mehmedic, R. Arafat, B. Yi and B. F. Banahan, 3rd (2000). "Potency trends of delta9-THC and other cannabinoids in confiscated marijuana from 1980-1997." J Forensic Sci **45**(1): 24-30.
- Forrester, M. B. and R. D. Merz (2007). "Risk of selected birth defects with prenatal illicit drug use, Hawaii, 1986-2002." J Toxicol Environ Health A **70**(1): 7-18.

646 Gasperi, V., D. Evangelista, V. Chiurchiu, F. Florenzano, I. Savini, S. Oddi, L. Avigliano, M.
647 V. Catani and M. Maccarrone (2014). "2-Arachidonoylglycerol modulates human endothelial
648 cell/leukocyte interactions by controlling selectin expression through CB1 and CB2
649 receptors." Int J Biochem Cell Biol **51**: 79-88.

650 Hebert-Chatelain, E., T. Desprez, R. Serrat, L. Bellocchio, E. Soria-Gomez, A. Busquets-
651 Garcia, A. C. Pagano Zottola, A. Delamarre, A. Cannich, P. Vincent, M. Varilh, L. M. Robin,
652 G. Terral, M. D. Garcia-Fernandez, M. Colavita, W. Mazier, F. Drago, N. Puente, L.
653 Reguero, I. Elezgarai, J. W. Dupuy, D. Cota, M. L. Lopez-Rodriguez, G. Barreda-Gomez, F.
654 Massa, P. Grandes, G. Benard and G. Marsicano (2016). "A cannabinoid link between
655 mitochondria and memory." Nature **539**(7630): 555-559.

656 Hebert-Chatelain, E., L. Reguero, N. Puente, B. Lutz, F. Chaoulhoff, R. Rossignol, P. V.
657 Piazza, G. Benard, P. Grandes and G. Marsicano (2014). "Cannabinoid control of brain
658 bioenergetics: Exploring the subcellular localization of the CB1 receptor." Mol Metab **3**(4):
659 495-504.

660 Hoyme, H. E., M. C. Higginbottom and K. L. Jones (1981). "The vascular pathogenesis of
661 gastroschisis: intrauterine interruption of the omphalomesenteric artery." J Pediatr **98**(2): 228-
662 231.

663 Hoyme, H. E., K. L. Jones, M. I. Van Allen, B. S. Saunders and K. Benirschke (1982).
664 "Vascular pathogenesis of transverse limb reduction defects." J Pediatr **101**(5): 839-843.

665 Lubinsky, M. (2014). "A vascular and thrombotic model of gastroschisis." Am J Med Genet
666 A **164A**(4): 915-917.

667 McClean, D. K. and A. M. Zimmerman (1976). "Action of delta 9-tetrahydrocannabinol on
668 cell division and macromolecular synthesis in division-synchronized protozoa."
669 Pharmacology **14**(4): 307-321.

670 Mokdad, A. H., L. Dwyer-Lindgren, C. Fitzmaurice, R. W. Stubbs, A. Bertozzi-Villa, C.
671 Morozoff, R. Charara, C. Allen, M. Naghavi and C. J. Murray (2017). "Trends and Patterns
672 of Disparities in Cancer Mortality Among US Counties, 1980-2014." Jama **317**(4): 388-406.

673 Murphy, S. K., N. Itchon-Ramos, Z. Visco, Z. Huang, C. Grenier, R. Schrott, K. Acharya, M.
674 H. Boudreau, T. M. Price, D. J. Raburn, D. L. Corcoran, J. E. Lucas, J. T. Mitchell, F. J.
675 McClernon, M. Cauley, B. J. Hall, E. D. Levin and S. H. Kollins (2018). "Cannabinoid
676 exposure and altered DNA methylation in rat and human sperm." Epigenetics.

677 National Birth Defects Prevention Network. (2018). "National Birth Defects Prevention
678 Network." Retrieved 15th July 2018, 2018, from <https://www.nbdpn.org/ar.php>.

679 Pacher, P., S. Steffens, G. Hasko, T. H. Schindler and G. Kunos (2018). "Cardiovascular
680 effects of marijuana and synthetic cannabinoids: the good, the bad, and the ugly." Nat Rev
681 Cardiol **15**(3): 151-166.

682 Reece A. S. and Hulse G.K. (2019). "Cannabis Consumption Patterns Parallel the East-West
683 Gradient in Canadian Neural Tube Defect Incidence: An Ecological Study." Global Pediatric
684 Health In Press.

685 Reece A. S. and Hulse G.K. (2019). "Cannabis Teratology Explains Current Patterns of
686 Coloradan Congenital Defects: The Contribution of Increased Cannabinoid Exposure to
687 Rising Teratological Trends " Clinical Pediatrics **58**(10): 1085-1123.

688 Reece A. S. and Hulse G.K. (2019). "Explaining Contemporary Patterns of Cannabis
689 Teratology." Clinical Pediatrics **4**(1): 1000146.

690 Reece A. S. and Hulse G.K. (2020). "Canadian Cannabis Consumption and Patterns of
691 Congenital Anomalies: An Ecological Geospatial Analysis." Journal of Addiction Medicine
692 **In Press**.

693 Reece A.S. and Hulse G.K. (2019). "Cannabis Teratology Explains Current Patterns of
694 Coloradan Congenital Defects: The Contribution of Increased Cannabinoid Exposure to
695 Rising Teratological Trends." Clinical Pediatrics **58**(10): 1085-1123.

696 Reece A.S., A. Norman and Hulse G.K. (2016). "Cannabis Exposure as an Interactive
697 Cardiovascular Risk Factor and Accelerant of Organismal Ageing – A Longitudinal Study."
698 BMJ - Open **In Press**.

699 Report of the Queensland Perinatal Maternal and Perinatal Quality Council and Queensland
700 Health (2018). Congenital Anomaly Linked File (CALF): Data Table and Notes, 2017.
701 Queensland Health. Brisbane, Queensland Health. **1**: 5.

702 Robinson M. (2019). "Babies born with deformed hands spark investigation in Germany."
703 Retrieved 5th October 2019, 2019, from [https://edition.cnn.com/2019/09/16/health/hand-](https://edition.cnn.com/2019/09/16/health/hand-deformities-babies-gelsenkirchen-germany-intl-scli-grm/index.html)
704 [deformities-babies-gelsenkirchen-germany-intl-scli-grm/index.html](https://edition.cnn.com/2019/09/16/health/hand-deformities-babies-gelsenkirchen-germany-intl-scli-grm/index.html).

705 Roth, G. A., L. Dwyer-Lindgren, A. Bertozzi-Villa, R. W. Stubbs, C. Morozoff, M. Naghavi,
706 A. H. Mokdad and C. J. L. Murray (2017). "Trends and Patterns of Geographic Variation in
707 Cardiovascular Mortality Among US Counties, 1980-2014." Jama **317**(19): 1976-1992.

708 Short, T. D., E. B. Stallings, J. Isenburg, L. A. O'Leary, M. M. Yazdy, M. K. Bohm, M.
709 Ethen, X. Chen, T. Tran, D. J. Fox, J. Fornoff, N. Forestieri, E. Ferrell, G. M. Ramirez, J.
710 Kim, J. Shi, S. J. Cho, K. Duckett, N. Nelson, K. Zielke, K. St John, B. Martin, C. Clark, M.
711 P. Huynh, C. Benusa and J. Reefhuis (2019). "Gastroschisis Trends and Ecologic Link to
712 Opioid Prescription Rates - United States, 2006-2015." MMWR Morb Mortal Wkly Rep
713 **68**(2): 31-36.

714 Substance Abuse and Mental Health Administration, Department of Health and Human
715 Services and United States Government. (2018). "National Survey of Drug Use and Health
716 2018, NSDUH." Retrieved June 2nd, 2018, 2018, from [https://www.samhsa.gov/data/all-](https://www.samhsa.gov/data/all-reports)
717 [reports](https://www.samhsa.gov/data/all-reports).

718 Tahir, S. K. and A. M. Zimmerman (1991). "Influence of marihuana on cellular structures
719 and biochemical activities." Pharmacol Biochem Behav **40**(3): 617-623.

720 Van Allen, M. I. and D. W. Smith (1981). "Vascular pathogenesis of gastroschisis." J Pediatr
721 **98**(4): 662-663.

722 van Diepen, H., E. Schlicker and M. C. Michel (2008). "Prejunctional and peripheral effects
723 of the cannabinoid CB(1) receptor inverse agonist rimonabant (SR 141716)." Naunyn
724 Schmiedebergs Arch Pharmacol **378**(4): 345-369.

- 725 Wang, J., W. Yuan and M. D. Li (2011). "Genes and pathways co-associated with the
- 726 exposure to multiple drugs of abuse, including alcohol, amphetamine/methamphetamine,
- 727 cocaine, marijuana, morphine, and/or nicotine: a review of proteomics analyses." Mol
- 728 Neurobiol **44**(3): 269-286.
- 729 Werler, M. M., A. A. Mitchell, C. A. Moore, M. A. Honein and S. National Birth Defects
- 730 Prevention (2009). "Is there epidemiologic evidence to support vascular disruption as a
- 731 pathogenesis of gastroschisis?" Am J Med Genet A **149A**(7): 1399-1406.
- 732 Willsher K. (2018) "Baby arm defects prompt nationwide investigation in France." Guardian.
- 733 Wolff, V., A. I. Schlagowski, O. Rouyer, A. L. Charles, F. Singh, C. Auger, V. Schini-Kerth,
- 734 C. Marescaux, J. S. Raul, J. Zoll and B. Geny (2015). "Tetrahydrocannabinol induces brain
- 735 mitochondrial respiratory chain dysfunction and increases oxidative stress: a potential
- 736 mechanism involved in cannabis-related stroke." Biomed Res Int **2015**: 323706.
- 737 Women and Newborn Health Service, Department of Health and Government of Western
- 738 Australia (2015). Western Australian Register of Developmental Anomalies 1980-2014.
- 739 Western Australia Health. Perth, Western Australia,, Western Australia Health,. **1**: 28.
- 740 Yamaji, K., K. P. Sarker, K. Kawahara, S. Iino, M. Yamakuchi, K. Abeyama, T. Hashiguchi
- 741 and I. Maruyama (2003). "Anandamide induces apoptosis in human endothelial cells: its
- 742 regulation system and clinical implications." Thromb Haemost **89**(5): 875-884.
- 743 Zimmerman A.M. and Zimmerman S. (1987). Cytogenetic Studies of Cannabinoid Effects.
- 744 Genetic and Perinatal Effects of Abused Substances. Braude M.C. and Zimmerman A.M.
- 745 New York, Academic Press Inc.; Harcourt, Brace Jovanovich. **1**: 95-112.
- 746 Zimmerman, A. M. and A. Y. Raj (1980). "Influence of cannabinoids on somatic cells in
- 747 vivo." Pharmacology **21**(4): 277-287.
- 748 Zimmerman, S. and A. M. Zimmerman (1990). "Genetic effects of marijuana." Int J Addict
- 749 **25**(1A): 19-33.

750
751

Supplementary Material - Table of Contents

Item	Tables	Page
Supplementary Table 1	Raw LR Data	2
Supplementary Table 2	Cannabis Use Quintiles	6
Supplementary Table 3	Median Values Full and Kriged Datasets	10
Supplementary Table 4	Introductory Regressions	11
Supplementary Table 5	Cannabinoid Regressions	12
Supplementary Table 6	Panel Regressions	13
Supplementary Table 7	Kriged Data	15
Supplementary Table 8	ICBDSR Data Re-Visited	17
Supplementary Table 9	WARDA Data on ETOPFA Rates	21
Supplementary Table 11	Spatial Regression with International Adjustment Factor for Silent Cases – 63%	23
Supplementary Table 12	Two-Step Instrumental Regression by Race	25
Supplementary Table 13	Mixed Effects Regression with IPW Weights	28
	Figures	
Supplementary Figure 1	Limb Reduction Rate by State – Facetted Plot	30
Supplementary Figure 2	Limb Reduction Rate by State – Geo-facetted Plot	31
Supplementary Figure 3	Daily Cannabis Use – General and in Pregnancy	32
Supplementary Figure 4	LRR- Income Association	33
Supplementary Figure 5	LR Non-Live Birth Rate – Scaled with USA Silent Factor, 37%	34
Supplementary Figure 6	LRR Over Time by Quintile Corrected for USA Silent Factor	35
Supplementary Figure 7	LRR Boxplots by Quintile Corrected for USA Silent Factor	36
Supplementary Figure 8	LRR Boxplots by Dichotomized Quintile Corrected for USA Silent Factor	37
Supplementary Figure 9	Map-Graphs of LRR Corrected for USA Silent Factor – Raw Data	38
Supplementary Figure 10	Map-Graphs of LRR Corrected for USA Silent Factor – Kriged Data	39
Supplementary Figure 11	LR Non-Live Birth Rate Over Time – Scaled with International Silent Factor, 63%	40
Supplementary Figure 12	LR Non-Live Birth Rate Boxplots – Scaled with International Silent Factor, 63%	41
Supplementary Figure 13	LR Non-Live Birth Rate Over Time by Quintiles – Scaled with International Silent Factor	42
Supplementary Figure 14	Map-Graphs of LRR Over Time – Adjusted with International Silent Factor – Raw Data	43

Supplementary Figure 15	Map-Graphs of LRR Over Time – Adjusted with International Silent Factor – Kriged Data	44
Supplementary Figure 16	Drug Exposure Plots for Hidden Factors of 0%, 37% and 63%	45
Supplementary Figure 17	Ethnic Composition Plots for Hidden Factors of 0%, 37% and 63%	46
Supplementary Figure 18	Effects of Registry Ascertainment and Case Finding Practices	47

Supplementary Table 1.: Raw Limb Reduction Data

State	1986-88	1989	1989-90	1991	1996	1998-99	2003-07	2004-08
Alabama						4.97		
Alaska					2.99	9.69	9.34	10.78
Arkansas	4.63	4.285	5.9	7.37	5.56	6.92	7.22	7.4
Arizona		9.49	11.19	8.97	8.97	5.56	3.35	3.02
California		6.15	4.3	7.19	7.69	5.12		4.61
Colorado				7.14	7.3	7.28	4.88	5.01
Connecticut				5.36	2.4	0	3.68	
Delaware						3.08		
Florida						3.78	3.09	3.38
Georgia		5.1	6.7	5.73	5.87	5.88	3.49	3.97
Hawaii		3.71	2.16	3.99	4.65	4.71	4.04	6.35
Illinois		1.24	1.23	2.15	2.44	2.4	4.84	4.36
Indiana							3.8	3.95
Iowa		7.45	6.36	5.62	6.17	7.5	6.49	6.93
Kansas	2.99	2.33						
Kentucky						1.5	3.9	4.02
Louisiana								5.66
Maine								1.25
Maryland	8.94	6.53	4.27		3.81	5.7	5.26	5.11
Massachusetts			3.41	3.19	3.24	2.47	4.4	4.49
Michigan						3.48		4.24
Minnesota								
Mississippi							1.8	1.75
Missouri		4.1	3.46	4.56	4.61	4.97		

Nebraska		7.98	3.26	5.76	4.27		4.46	4.35
Nevada								2.53
New Hampshire							2.35	3.37
New Jersey		4.05	4.06	4.22	4.11	4.51	4.44	4.86
New Mexico					6.11	5.61	3.35	
New York		5.5	4.66	4.47	3.03	3.43	2.85	2.8
North Carolina		5.22	4.15	3.81	4.55	4.76	4.91	4.95
North Dakota							1.2	1.17
Ohio								
Oklahoma		2.97	8.59	6.32	4.95	4.92	6.16	5.25
Oregon								
Puerto Rico							3.75	4.28
Rhode Island				2.56			2.08	2.52
South Carolina							4.77	
South Dakota								
Tennessee				4.7	3.14		3.67	3.83
Texas					3.55	5.79	5.99	6.04
Utah						4.49	7.91	7.4
Vermont								
Virginia		3.63	2.12	2.01	2.31	2.84		3.83
Washington			5.88	6.02				
West Virginia			1.27	1.87			1.7	1.97
Wisconsin		4.41	3.73	4.19	4.44	3.92		3.69

2005-09	2007-11	2008-12	2009-13	2010-14	2011-2015	2012-2016
13.3				9.1	9.9	9.2
6.5	6.9	6.8	5.5		3.5	
3.3	2.6	2.9	2.9	2.8	2.7	3.4
4.3	3.2	3.1	2.9	3		3.3
4.7	4.1	4.1	4.9	4.8	4.6	4.5
3.2						
2.9	3.4	5	7.1	8.4	8.2	7.6
3.5	3.6	3.9	3.7	3.8	3.5	3.5
4.4	4.8	4.7	4.5	4.1	3.7	3
3.9						
4.3	3.7	4.8	5	3.9	4.2	4.4
3.7					2.9	2.8
6.6	6.2	6	6	6.1	5.7	5.5
	3.9	3.7	3.5	2.8	2.5	2.1
3.5	2.9	2.8	2.9	3.8	4.9	4.2
4.1	3.2	2	2.7	3.3	3.6	4
1.9	2.3	2.8	3.1	2.7	3.6	3
4.4	2.3	2.9	3.1	3.4	3.1	2.4
4.1	3.7	4.2	4.7	5.3	5.5	5.1
4.6	4.2	4.2	3.9	3.9	4.9	4.4
2.5	2.4	3.2	3.6	3.3	3.6	3.5
2.3	3.6	3.7	3.8	3	4.4	4.4
5		4.5	4.4	4.4	3.8	4.6
5	6.6	6.2	5.7	5.6	5.8	5.8
3	4.2	3.5	3.4	2.7	2.2	1.9
3.6	4.3	2.4				
5.2	5.3	5	4.5	4.4	3.4	3.7

	4.2	4	7.4	7	6.9	5.8
3	3.1	3	2.9	2.9	2.8	2.8
5.4	5.3	5.2	5	4.6	4.5	4.3
2.1	2.2	1.7	1.9	0.8		
29.1	4.2	4.4	4.7	4.5	4.5	4.7
		6.5	7.6	8.8	8.5	7.4
5	5.8	6.4	7.2	6.4	6.8	6.5
2.8	4.1	3.8	3.5	2.8	2.8	3.5
4.4	6.3	6.4	6.6	7	5.9	5
4.3				4.1	4	4
6.1	5.6	6.1	5.8	5.8	5.6	5.4
7.4	6.7	6	6.2	6.6	6.3	6
				5.3	5.3	5
3.8	2.8	2.6	2.5	2.7	3.3	
				5.6		3.5
2	3.8	2.1	1.8	1.9	1.9	2.4
3.8	3.3	3.2	3.2	2.9	3	3

Supplementary Table 2.: Cannabis Use Quintiles

Rank Ordered Listing of Cannabis Use Quintiles

State	Year	mrjmon	QuinCI	Quin	QuinCN
Colorado	2015	0.171216	(0.146,0.171]	Quintile 5	(0.113,0.171]
Vermont	2015	0.150801	(0.146,0.171]	Quintile 5	(0.113,0.171]
Alaska	2015	0.147986	(0.146,0.171]	Quintile 5	(0.113,0.171]
Maine	2015	0.139832	(0.122,0.146]	Quintile 4	(0.113,0.171]
Rhode Island	2015	0.132805	(0.122,0.146]	Quintile 4	(0.113,0.171]
Oregon	2015	0.130385	(0.122,0.146]	Quintile 4	(0.113,0.171]
New Hampshire	2015	0.123054	(0.122,0.146]	Quintile 4	(0.113,0.171]
District of Columbia	2015	0.121021	(0.0968,0.122]	Quintile 3	(0.113,0.171]
Massachusetts	2015	0.119083	(0.0968,0.122]	Quintile 3	(0.113,0.171]
Washington	2015	0.114177	(0.0968,0.122]	Quintile 3	(0.113,0.171]
Montana	2015	0.113184	(0.0968,0.122]	Quintile 3	(0.0817,0.113]
New Mexico	2015	0.103081	(0.0968,0.122]	Quintile 3	(0.0817,0.113]
Michigan	2015	0.102894	(0.0968,0.122]	Quintile 3	(0.0817,0.113]
California	2015	0.098151	(0.0968,0.122]	Quintile 3	(0.0817,0.113]
New York	2015	0.097454	(0.0968,0.122]	Quintile 3	(0.0817,0.113]
Connecticut	2015	0.097221	(0.0968,0.122]	Quintile 3	(0.0817,0.113]
Maryland	2015	0.096645	(0.072,0.0968]	Quintile 2	(0.0817,0.113]
Indiana	2015	0.087862	(0.072,0.0968]	Quintile 2	(0.0817,0.113]
Arizona	2015	0.085918	(0.072,0.0968]	Quintile 2	(0.0817,0.113]
South Carolina	2015	0.082666	(0.072,0.0968]	Quintile 2	(0.0817,0.113]
Missouri	2015	0.081698	(0.072,0.0968]	Quintile 2	(0.0743,0.0817]
Hawaii	2015	0.081108	(0.072,0.0968]	Quintile 2	(0.0743,0.0817]
Delaware	2015	0.081095	(0.072,0.0968]	Quintile 2	(0.0743,0.0817]

Illinois	2015	0.080563	(0.072,0.0968]	Quintile 2	(0.0743,0.0817]
Georgia	2015	0.078868	(0.072,0.0968]	Quintile 2	(0.0743,0.0817]
Florida	2015	0.078732	(0.072,0.0968]	Quintile 2	(0.0743,0.0817]
Nevada	2015	0.078481	(0.072,0.0968]	Quintile 2	(0.0743,0.0817]
Ohio	2015	0.078167	(0.072,0.0968]	Quintile 2	(0.0743,0.0817]
Pennsylvania	2015	0.078005	(0.072,0.0968]	Quintile 2	(0.0743,0.0817]
Minnesota	2015	0.07738	(0.072,0.0968]	Quintile 2	(0.0743,0.0817]
North Carolina	2015	0.074308	(0.072,0.0968]	Quintile 2	(0.064,0.0743]
Kansas	2015	0.073762	(0.072,0.0968]	Quintile 2	(0.064,0.0743]
Arkansas	2015	0.072504	(0.072,0.0968]	Quintile 2	(0.064,0.0743]
Kentucky	2015	0.071327	[0.0472,0.072]	Quintile 1	(0.064,0.0743]
New Jersey	2015	0.070252	[0.0472,0.072]	Quintile 1	(0.064,0.0743]
West Virginia	2015	0.069969	[0.0472,0.072]	Quintile 1	(0.064,0.0743]
South Dakota	2015	0.069882	[0.0472,0.072]	Quintile 1	(0.064,0.0743]
Wisconsin	2015	0.068192	[0.0472,0.072]	Quintile 1	(0.064,0.0743]
Virginia	2015	0.067445	[0.0472,0.072]	Quintile 1	(0.064,0.0743]
Louisiana	2015	0.064257	[0.0472,0.072]	Quintile 1	(0.064,0.0743]
Nebraska	2015	0.063974	[0.0472,0.072]	Quintile 1	[0.0472,0.064]
Tennessee	2015	0.063807	[0.0472,0.072]	Quintile 1	[0.0472,0.064]
Oklahoma	2015	0.063326	[0.0472,0.072]	Quintile 1	[0.0472,0.064]
Idaho	2015	0.063242	[0.0472,0.072]	Quintile 1	[0.0472,0.064]
Wyoming	2015	0.062962	[0.0472,0.072]	Quintile 1	[0.0472,0.064]
Texas	2015	0.060034	[0.0472,0.072]	Quintile 1	[0.0472,0.064]
North Dakota	2015	0.059227	[0.0472,0.072]	Quintile 1	[0.0472,0.064]
Alabama	2015	0.053685	[0.0472,0.072]	Quintile 1	[0.0472,0.064]
Mississippi	2015	0.053619	[0.0472,0.072]	Quintile 1	[0.0472,0.064]
Utah	2015	0.051131	[0.0472,0.072]	Quintile 1	[0.0472,0.064]
Iowa	2015	0.047242	[0.0472,0.072]	Quintile 1	[0.0472,0.064]

Alphabetical Listing of Cannabis Use Quintiles

State	Year	mrjmon	QuinCI	Quin	QuinCN
Alabama	2015	0.053685	[0.0472,0.072]	Quintile 1	[0.0472,0.064]
Alaska	2015	0.147986	(0.146,0.171]	Quintile 5	(0.113,0.171]
Arizona	2015	0.085918	(0.072,0.0968]	Quintile 2	(0.0817,0.113]
Arkansas	2015	0.072504	(0.072,0.0968]	Quintile 2	(0.064,0.0743]
California	2015	0.098151	(0.0968,0.122]	Quintile 3	(0.0817,0.113]
Colorado	2015	0.171216	(0.146,0.171]	Quintile 5	(0.113,0.171]
Connecticut	2015	0.097221	(0.0968,0.122]	Quintile 3	(0.0817,0.113]
Delaware	2015	0.081095	(0.072,0.0968]	Quintile 2	(0.0743,0.0817]
District of Columbia	2015	0.121021	(0.0968,0.122]	Quintile 3	(0.113,0.171]
Florida	2015	0.078732	(0.072,0.0968]	Quintile 2	(0.0743,0.0817]
Georgia	2015	0.078868	(0.072,0.0968]	Quintile 2	(0.0743,0.0817]
Hawaii	2015	0.081108	(0.072,0.0968]	Quintile 2	(0.0743,0.0817]
Idaho	2015	0.063242	[0.0472,0.072]	Quintile 1	[0.0472,0.064]
Illinois	2015	0.080563	(0.072,0.0968]	Quintile 2	(0.0743,0.0817]
Indiana	2015	0.087862	(0.072,0.0968]	Quintile 2	(0.0817,0.113]
Iowa	2015	0.047242	[0.0472,0.072]	Quintile 1	[0.0472,0.064]
Kansas	2015	0.073762	(0.072,0.0968]	Quintile 2	(0.064,0.0743]
Kentucky	2015	0.071327	[0.0472,0.072]	Quintile 1	(0.064,0.0743]
Louisiana	2015	0.064257	[0.0472,0.072]	Quintile 1	(0.064,0.0743]
Maine	2015	0.139832	(0.122,0.146]	Quintile 4	(0.113,0.171]
Maryland	2015	0.096645	(0.072,0.0968]	Quintile 2	(0.0817,0.113]
Massachusetts	2015	0.119083	(0.0968,0.122]	Quintile 3	(0.113,0.171]
Michigan	2015	0.102894	(0.0968,0.122]	Quintile 3	(0.0817,0.113]
Minnesota	2015	0.07738	(0.072,0.0968]	Quintile 2	(0.0743,0.0817]
Mississippi	2015	0.053619	[0.0472,0.072]	Quintile 1	[0.0472,0.064]

Missouri	2015	0.081698	(0.072,0.0968]	Quintile 2	(0.0743,0.0817]
Montana	2015	0.113184	(0.0968,0.122]	Quintile 3	(0.0817,0.113]
Nebraska	2015	0.063974	[0.0472,0.072]	Quintile 1	[0.0472,0.064]
Nevada	2015	0.078481	(0.072,0.0968]	Quintile 2	(0.0743,0.0817]
New Hampshire	2015	0.123054	(0.122,0.146]	Quintile 4	(0.113,0.171]
New Jersey	2015	0.070252	[0.0472,0.072]	Quintile 1	(0.064,0.0743]
New Mexico	2015	0.103081	(0.0968,0.122]	Quintile 3	(0.0817,0.113]
New York	2015	0.097454	(0.0968,0.122]	Quintile 3	(0.0817,0.113]
North Carolina	2015	0.074308	(0.072,0.0968]	Quintile 2	(0.064,0.0743]
North Dakota	2015	0.059227	[0.0472,0.072]	Quintile 1	[0.0472,0.064]
Ohio	2015	0.078167	(0.072,0.0968]	Quintile 2	(0.0743,0.0817]
Oklahoma	2015	0.063326	[0.0472,0.072]	Quintile 1	[0.0472,0.064]
Oregon	2015	0.130385	(0.122,0.146]	Quintile 4	(0.113,0.171]
Pennsylvania	2015	0.078005	(0.072,0.0968]	Quintile 2	(0.0743,0.0817]
Rhode Island	2015	0.132805	(0.122,0.146]	Quintile 4	(0.113,0.171]
South Carolina	2015	0.082666	(0.072,0.0968]	Quintile 2	(0.0817,0.113]
South Dakota	2015	0.069882	[0.0472,0.072]	Quintile 1	(0.064,0.0743]
Tennessee	2015	0.063807	[0.0472,0.072]	Quintile 1	[0.0472,0.064]
Texas	2015	0.060034	[0.0472,0.072]	Quintile 1	[0.0472,0.064]
Utah	2015	0.051131	[0.0472,0.072]	Quintile 1	[0.0472,0.064]
Vermont	2015	0.150801	(0.146,0.171]	Quintile 5	(0.113,0.171]
Virginia	2015	0.067445	[0.0472,0.072]	Quintile 1	(0.064,0.0743]
Washington	2015	0.114177	(0.0968,0.122]	Quintile 3	(0.113,0.171]
West Virginia	2015	0.069969	[0.0472,0.072]	Quintile 1	(0.064,0.0743]
Wisconsin	2015	0.068192	[0.0472,0.072]	Quintile 1	(0.064,0.0743]
Wyoming	2015	0.062962	[0.0472,0.072]	Quintile 1	[0.0472,0.064]

Supplementary Table 3.: Median Values Full and Kriged Datasets

Quintile	Full Dataset 1988-2016	Kriged Dataset 2003-2016
	Median \pm S.E.M.	Median \pm S.E.M.
Quintile 1	6.06 (5.61, 6.51)	9.2 (8.49, 9.91)
Quintile 2	5.93 (5.5, 6.36)	9.41 (8.68, 10.14)
Quintile 3	6.03 (5.5, 6.56)	8.89 (7.91, 9.87)
Quintile 4	5.55 (4.26, 6.84)	8.67 (6.51, 10.83)
Quintile 5	10.61 (8.41, 12.81)	16.36 (12.95, 19.77)

Supplementary Table 4.: Introductory Regressions

Parameter	Parameter		Model Parameters			
	Estimate (C.I.)	Pr(> t)	R-Squared	F	dF	P
<i>lm(LR_Rate ~ Year)</i>						
Year	-0.02 (-0.0396, -0.0004)	0.0513	0.0065	3.821	1,433	0.0513
<i>lm(LR_Rate ~ Quintile)</i>						
Quintile 5	0.43 (0.27, 0.59)	2.9E-08	0.0759	9.915	4,430	1.1E-07
<i>lm(LR_Rate ~ Dichotomized_Quintiles)</i>						
Highest Quintile	0.42 (0.28, 0.56)	2.2E-08	0.0677	32.49	1,433	2.2E-08
<i>lm(LR_Rate ~ Cannabis_Use)</i>						
Cannabis_Monthly	8.51 (0.06, 16.96)	0.0492	0.0091	3.898	1,314	0.0492
<i>lm(LR_Rate ~ Cannabis_Use * THC_Potency)</i>						
Cannabis: THC	10.64 (3.7, 17.58)	0.0029	0.0310	4.356	3,312	0.0050
THC_Concentration	-0.7 (-1.17, -0.23)	0.0037				
Cannabis_Monthly	-109.27 (-186.69, -31.85)	0.0060				

Supplementary Table 5.: Cannabinoid Regressions

Parameter - Cannabinoid	Parameter		Model Parameters			
	Estimate (C.I.)	Pr(> t)	R-Squared	F	dF	P
<i>lm(LR_Rate ~ Cannabinoid)</i>						
THC_Exposure	0.70 (0.05, 1.35)	0.0368	0.0107	4.395	1,314	0.0369
Cannabigerol_Exposure	21.01 (3.15, 38.87)	0.0218	0.0135	5.315	1,314	0.0218
Cannabichromene_Exposure	36.33 (2.03, 70.63)	0.0387	0.0104	4.308	1,314	0.0388
Cannabinoid_Exposure	14.26 (0.02, 28.50)	0.0506	0.0090	3.852	1,314	0.0506
Cannabidiol_Exposure	2.90 (-19.23, 25.03)	0.7980	-0.0030	0.0658	1,314	0.7977

Supplementary Table 6.: Panel Regressions

Instrumental \pm Lagged Variables	Parameter	Parameter		Model Parameters				
		Estimate (C.I.)	Pr(> t)	Adj. R-Squar-ed	Chi.-Squ.	F	dF	P-value
	<i>0 Lags</i>							
	<i>Drugs</i>							
	<i>plm(LR_Rate ~ Median.HH.Income)</i>							
	Median.HH.Income	-7.7E-07 (-4.5E-06, 3.0E-06)	0.6804	0.0019571		0.1699	1,424	0.6804
	<i>plm(LR_Rate ~ NHWhite + NHBlack + Hispanic + NHAsian + NHAIAN)</i>							
	NHAIAN	0.08 (0.04, 0.12)	4.7E-05	0.038985		16.9425	1,392	4.7E-05
	<i>plm(ASD_Rate ~ Cigarettes * Cannabis * Alcohol.Abuse + Analgesics + Cocaine)</i>							
	Cannabis	-1.08 (-1.73, -0.43)	0.0010	0.05335		5,310	5	0.0005
	Cigarettes: Cannabis	4.23 (1.66, 6.80)	0.0014					
	Cannabis: Alcohol.Abuse	15.33 (5.35, 25.31)	0.0028					
	Cigarettes: Cannabis: Alcohol.Abuse	-54.34 (-92.93, -15.75)	0.0061					
	Analgesics	0.32 (0.03, 0.61)	0.0290					
	<i>plm(ASD_Rate ~ Cigarettes * Cannabis * Alcohol.Abuse + Analgesics + Cocaine + 5 Races + MHY)</i>							
	Cannabis	-0.87 (-1.52, -0.22)	0.0084	0.0443		3.8072	5,298	0.0023
	Cannabis: Alcohol.Abuse	13.44 (3.48, 23.40)	0.0085					
	Cigarettes: Cannabis	3.37 (0.76, 5.98)	0.0117					
	Cigarettes: Cannabis: Alcohol.Abuse	-45.32 (-84.07, -6.57)	0.0226					
	NHAIAN	0.06 (0.02, 0.10)	0.0243					

THC Exposure, 0:2	<i>2 Lags</i>							
CBG Exposure, 0:2	<i>plm(ASD Rate ~ Cigarettes * Cannabis * Alcohol.Abuse + Analgesics + Cocaine + 5 Races + MHY)</i>							
NHWhiteDailyCannExposure, 0:2	Cigarettes: Cannabis: Alcohol.Abuse	113.87 (22.67, 205.07)	0.0144	0.0474	11.8102		4	0.0188
NHBlackDailyCannExposure, 0:2	Cigarettes: Alcohol.Abuse	304.89 (50.07, 559.71)	0.0190					
HispanicDailyCannExposure, 0:2	Alcohol.Abuse	-69.76 (-129.48, -10.04)	0.0221					
NHAsianDailyCannExposure, 0:2	Cannabis: Alcohol.Abuse	-24.4 (-46, -2.80)	0.0268					
NHAIANDailyCannExposure, 0:2								
NHHNPIDailyCannExposure, 0:2								

Supplementary Table 7.: Kriged Data

State	2005	2006	2007	2009	2010	2011	2012	2013	2014
Arizona	3.35	3.02	3.3	2.6	2.9	2.9	2.8	2.7	3.4
Colorado	4.88	5.01	4.7	4.1	4.1	4.9	4.8	4.6	4.5
Florida	3.09	3.38	3.5	3.6	3.9	3.7	3.8	3.5	3.5
Georgia	3.49	3.97	4.4	4.8	4.7	4.5	4.1	3.7	3
Illinois	4.84	4.36	4.3	3.7	4.8	5	3.9	4.2	4.4
Iowa	6.49	6.93	6.6	6.2	6	6	6.1	5.7	5.5
Kentucky	3.9	4.02	3.5	2.9	2.8	2.9	3.8	4.9	4.2
Maryland	5.26	5.11	4.4	2.3	2.9	3.1	3.4	3.1	2.4
Massachusetts	4.4	4.49	4.1	3.7	4.2	4.7	5.3	5.5	5.1
Mississippi	1.8	1.75	2.3	3.6	3.7	3.8	3	4.4	4.4
Nebraska	4.46	4.35	5	6.6	6.2	5.7	5.6	5.8	5.8
New Jersey	4.44	4.86	5.2	5.3	5	4.5	4.4	3.4	3.7
New York	2.85	2.8	3	3.1	3	2.9	2.9	2.8	2.8
North Carolina	4.91	4.95	5.4	5.3	5.2	5	4.6	4.5	4.3
Oklahoma	6.16	5.25	29.1	4.2	4.4	4.7	4.5	4.5	4.7
Puerto Rico	3.75	4.28	5	5.8	6.4	7.2	6.4	6.8	6.5
Rhode Island	2.08	2.52	2.8	4.1	3.8	3.5	2.8	2.8	3.5
Texas	5.99	6.04	6.1	5.6	6.1	5.8	5.8	5.6	5.4
Utah	7.91	7.4	7.4	6.7	6	6.2	6.6	6.3	6
West Virginia	1.7	1.97	2	3.8	2.1	1.8	1.9	1.9	2.4
Louisiana	3.3	5.66	4.1	3.2	2	2.7	3.3	3.6	4
Maine	2.6	1.25	1.9	2.3	2.8	3.1	2.7	3.6	3
Michigan	4.3	4.24	4.6	4.2	4.2	3.9	3.9	4.9	4.4
Nevada	2.9	2.53	3	4.2	3.5	3.4	2.7	2.2	1.9
South	4.77	4.6	4.4	6.3	6.4	6.6	7	5.9	5

Carolina									
Wisconsin	3.7	3.69	3.8	3.3	3.2	3.2	2.9	3	3
Arkansas	7.22	7.4	6.5	6.9	6.8	5.5	4.5	3.5	3.5
California	3.4	4.61	4.3	3.2	3.1	2.9	3	3.2	3.3
Delaware	6.1	4.5	2.9	3.4	5	7.1	8.4	8.2	7.6
Minnesota	3.2	2.8	2.5	2.4	3.2	3.6	3.3	3.6	3.5
New Mexico	3.35	3.6	4.2	4.2	4	7.4	7	6.9	5.8
North Dakota	1.2	1.2	2.1	2.2	1.7	1.9	0.8	1.6	1.6
Virginia	3.1	3.83	3.8	2.8	2.6	2.5	2.7	3.3	3.1
Alaska	9.34	10.78	13.3	12.3	11.2	10.2	9.1	9.9	9.2
Oregon	6.5	6.5	6.5	6.5	6.5	7.6	8.8	8.5	7.4

Temporally kriged data inserted in red.

Supplementary Table 8.: ICBDSR Data Re-Visited

Worldwide								
Phocomelia								Combined Result
% SB					%ETOPFA			
Registry	Cases	% SB	nSB		Cases	%ETOPFA	nETOPFA	
Atlanta	11	27.3	3		Canada	5	16.7	1
Texas	12	8.3	1		Atlanta	11	9.1	1
Mexico	9	11.1	1		Finland	2	100	2
SAMerica	7	28.6	2		Anhalt	4	50	2
France	19	10.5	2		France	19	44.8	9
Spain	12	25	3		Tuscany	3	100	3
Beijing	11	72.7	8		Campaigna	8	12.5	1
Victoria	20	35	7		Victoria	20	10	2
Totals	101		27			72		20
Fractions			0.2672					0.2826
Total Percent								54.99% 14.35%
Amelia								
SB					ETOPFA			
Registry	Quoted ETOPFA Mean							

USA Only[illegible]

Supplementary Table 9.: WARDA Data on ETOFPA Rates

Year	Live.Births	ETOPFA	Total.T21	WA.T21.TOP.Rate	TopRt	FMaxTR
1980	1.0987	0.0000	1.0987	0.0000	0.0000	0.0000
1981	0.8537	0.1254	0.9791	0.1275	0.1275	0.1645
1982	1.1136	0.1184	1.2320	0.0941	0.0941	0.1215
1983	1.0850	0.1115	1.1965	0.0923	0.0923	0.1191
1984	0.9987	0.1910	1.1897	0.1581	0.1581	0.2041
1985	1.1504	0.3283	1.4787	0.2183	0.2183	0.2818
1986	1.1651	0.4079	1.5729	0.2496	0.2496	0.3222
1987	1.0283	0.3144	1.3427	0.2131	0.2131	0.2750
1988	1.0863	0.5670	1.6533	0.3323	0.3323	0.4289
1989	0.9783	0.2932	1.2716	0.2276	0.2276	0.2938
1990	1.1156	0.3368	1.4523	0.2135	0.2135	0.2756
1991	1.0437	0.4235	1.4673	0.2722	0.2722	0.3514
1992	1.2603	0.5247	1.7851	0.2834	0.2834	0.3658
1993	1.4625	0.5250	1.9875	0.2521	0.2521	0.3253
1994	0.6695	0.8570	1.5265	0.5557	0.5557	0.7173
1995	1.0231	1.1168	2.1399	0.5080	0.5080	0.6557
1996	1.0882	0.8358	1.9241	0.4141	0.4141	0.5345
1997	0.8433	1.0092	1.8525	0.5322	0.5322	0.6869
1998	0.7498	0.9517	1.7015	0.5301	0.5301	0.6842
1999	0.8149	1.0241	1.8390	0.5399	0.5399	0.6969
2000	1.2767	1.7022	2.9789	0.5606	0.5606	0.7236
2001	0.7289	1.3779	2.1068	0.6454	0.6454	0.8330
2002	1.1402	1.5080	2.6482	0.5430	0.5430	0.7008
2003	0.8232	1.4073	2.2304	0.6058	0.6058	0.7819
2004	1.0974	1.7032	2.8006	0.5800	0.5800	0.7487

2005	1.0400	1.8621	2.9021	0.6341	0.6341	0.8184
2006	0.8383	1.6893	2.5276	0.6539	0.6539	0.8440
2007	1.0044	1.6823	2.6868	0.6008	0.6008	0.7755
2008	0.7523	1.5095	2.2618	0.6224	0.6224	0.8033
2009	0.9761	1.9857	2.9618	0.6489	0.6489	0.8375
2010	0.9582	2.2352	3.1935	0.6997	0.6997	0.9031
2011	0.6527	2.2291	2.8819	0.7815	0.7815	1.0087
2012	0.7383	2.1802	2.9185	0.7531	0.7531	0.9720
2013	0.7200	2.0825	2.8024	0.7461	0.7461	0.9630
2014	0.5122	1.8075	2.3198	0.7748	0.7748	1.0000
2015	0.5122	1.8075	2.3198	0.7748	0.7748	1.0000

Supplementary Table 10.: Spatial Regression with International Adjustment Factor for Silent Cases – 63%

Instrumental \pm Lagged Variables	Parameter			Model			
	Parameter	Estimate (C.I.)	P-Value	LogLik	Parameters	Value	P-Value
	<i>Full Model</i>						
	<i>0 Lags</i>						
THC Exposure	<i>spreml(LR_Rate ~ Cigarettes * Cannabis * Alcohol.Abuse + Analgesics + Cocaine + MHY + 5 Races)</i>						
CBG Exposure	NHAIAN	-0.06 (-0.10, -0.02)	0.0024	46.97534	phi	3.2020	0.00305
NHWhite_DailyCan_THCExposure	Cigarettes: Cannabis: Analgesics	-2.71 (-4.53, -0.89)	0.0034		psi	0.7132	<2E-16
NHBlack_DailyCan_THCExposure	Cigarettes: Analgesics	-3.87 (-6.52, -1.22)	0.0043		rho	-0.2693	0.04542
NHAIAN_DailyCan_THCExposure	Cannabis: Analgesics	0.33 (0.09, 0.57)	0.0052		lambda	0.3297	0.00316
Hispanic_DailyCan_THCExposure	Cigarettes: Cannabis	-3.92 (-6.74, -1.1)	0.0064				
NHAsian_DailyCan_THCExposure	Hispanic	0.16 (0.04, 0.28)	0.0112				
	<i>Full Model</i>						
THC Exposure, 0:2	<i>2 Lags</i>						
CBG Exposure, 0:2	<i>spreml(LR_Rate ~ Cigarettes * Cannabis * Alcohol.Abuse + Analgesics + Cocaine + MHY + 5 Races)</i>						
NHWhite_DailyCan_THCExposure, 0:2	Cocaine	-0.26 (-0.42, -0.10)	0.0006	-1.70233	phi	1.3786	0.2854
NHBlack_DailyCan_THCExposure, 0:2	Hispanic	0.14 (0.04, 0.24)	0.0075		psi	0.7051	3.1E-05
NHAIAN_DailyCan_THCExposure, 0:2	Cannabis	0.20 (0.00, 0.40)	0.0456		rho	-0.3564	0.01851
Hispanic_DailyCan_THCExposure, 0:2					lambda	0.4214	0.0006
NHAsian_DailyCan_THCExposure, 0:2							
	<i>Full Model</i>						
THC Exposure, 0:4	<i>4 Lags</i>						

CBG Exposure, 0:4	<i>spreml(LR Rate ~ Cigarettes * Cannabis * Alcohol.Abuse + Analgesics + Cocaine + MHY + 5 Races)</i>						
NHWhite_DailyCan_THCExposure, 0:4	Cigarettes	65.50 (32.67, 98.33)	0.0001	17.49213	phi	0.0139	0.9917
NHBlack_DailyCan_THCExposure, 0:4	Analgesics	-3.61 (-5.55, -1.67)	0.0003		psi	0.9637	<2E-16
NHAIAN_DailyCan_THCExposure, 0:4	Cigarettes: Analgesics	14.46 (6.31, 22.61)	0.0005		rho	0.0148	0.9499
Hispanic_DailyCan_THCExposure, 0:4	Cigarettes: Cannabis	7.19 (2.82, 11.56)	0.0013		lambda	-0.2077	0.3652
NHAsian_DailyCan_THCExposure, 0:4	Cannabis	-1.46 (-2.52, -0.40)	0.0070				

Supplementary Table 11.: Two-Step Instrumental Regression by Race

Instrumental Variables	Parameter			Model Parameters			
	Parameter	Estimate (C.I.)	P-Value	Adj. R-Squared	Wald Test	dF	P-value
	0 Instrumental Variables						
	<i>ivreg(LR_Rate ~ Race)</i>						
	NHAIAN	1.00 (0.89, 1.11)	< 2e-16	0.1794	77.89	4,1403	<2.0E-16
	NHAfric.American	0.45 (0.36, 0.54)	< 2e-16				
	NHCauc.American	0.29 (0.2, 0.38)	2.7E-10				
	Hispanic	0.30 (0.20, 0.40)	7.2E-10				
	2 Instrumental Variables						
	<i>ivreg(LR_Rate ~ Race)</i>						
MeanDaysCann x mrjmon	NHCauc.American	5.11 (-32.48, 42.70)	0.7900	-168.1	0.114	3,1237	0.9519
Potency	NHAfric.American	-16.95 (-159.97, 126.07)	0.8160				
	NHAIAN	-0.13 (-33.35, 33.09)	0.9940				
	10 Instrumental Variables						
	<i>ivreg(LR_Rate ~ Race)</i>						
Cigarettes Month	NHAIAN	2.45 (0.02, 4.88)	0.0477	-2.313	6.563	4,1236	3.17E-05
Analgesic Abuse	NHCauc.American	-0.63 (-1.90, 0.64)	0.3302				
Cocaine Annual	Hispanic	-1.52 (-6.44, 3.40)	0.5454				
Median Household Income	NHAfric.American	0.6 (-1.59, 2.79)	0.5935				
MeanDaysCann x Cannabis							
Potency							
THC Exposure							

Cannabigerol Exposure							
Cannabichromene Exposure							
Cannabinol Exposure							

Supplementary Table 12.:**Numbers of Cases and Controls in States with Legal Cannabis vs. Other Paradigms**

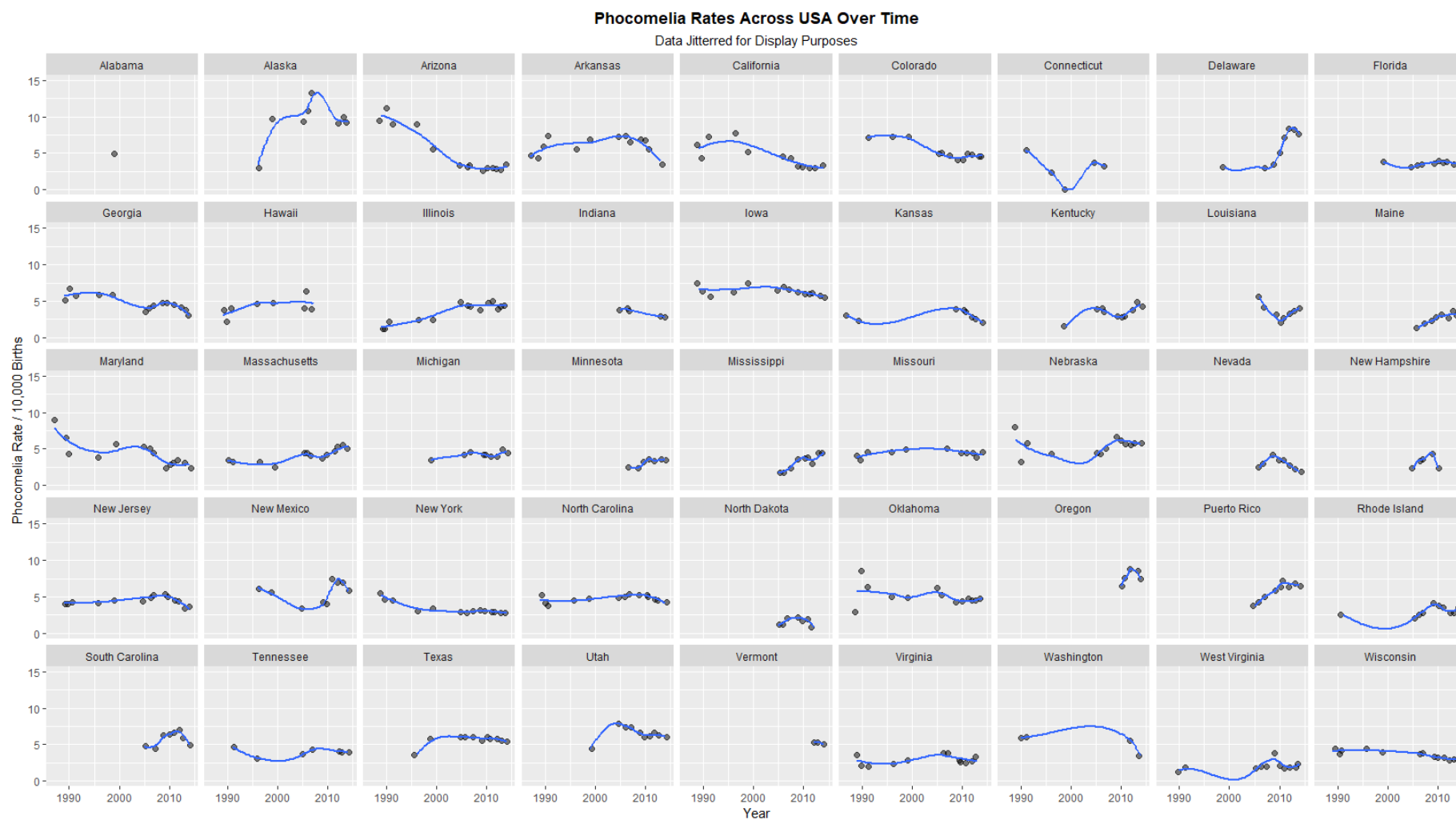
Dichotomized Status	No. Limb Reductions	No. Limb Reductions 37% Silent Factor	No. Limb Reductions 63% Silent Factor	Total Births	Normal Births	Normal Births 37% Silent Factor	Normal Births 63% Silent Factor
Other	14,398	21,106	31,954	33,645,176	33,630,778	33,624,070	33,613,222
Legal	215	338	566	429,020	428,805	428,682	428,454

Supplementary Table 13:**Inverse Probability-Weighted Mixed Effects Regression – Final Models**

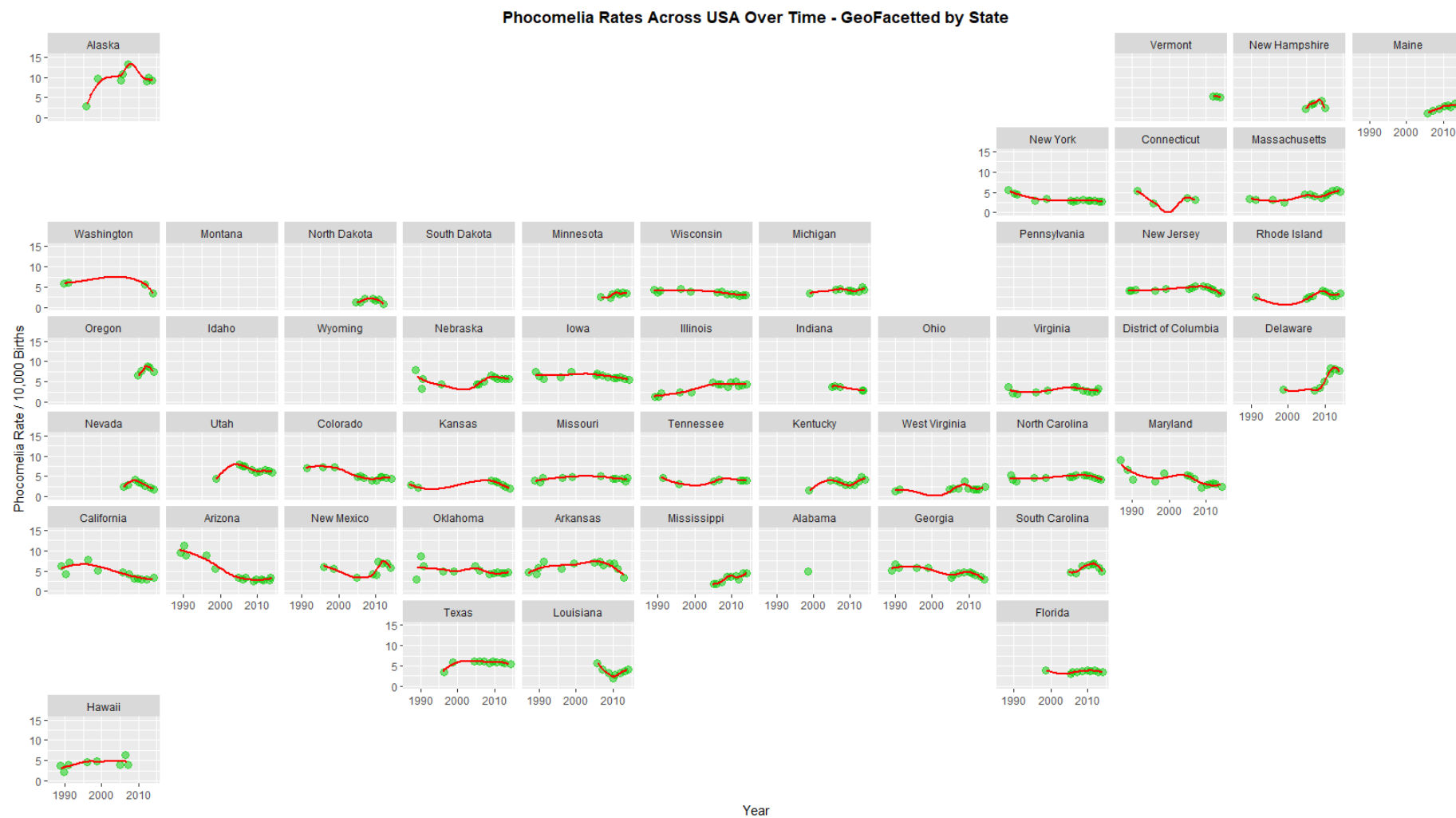
Parameter			Model		
Parameter	Estimate (C.I.)	P-Value	AIC	BIC	logLik
<i>Additive</i>					
Afric.Am.THc.Exposure	0.61 (0.57, 0.65)	<0.0001	2882.746	2930.68	-1428.373
Alcohol.Abuse	30.68 (27.6, 33.75)	<0.0001			
Cigarettes	3.36 (2.97, 3.74)	<0.0001			
Cauc.Am	11.54 (7.29, 15.79)	<0.0001			
Afric.Am	0.35 (0.16, 0.53)	0.0002			
Cocaine	-0.17 (-0.24, -0.1)	<0.0001			
Asian.Am	-1.94 (-2.27, -1.61)	<0.0001			
Analgesics	-0.94 (-1.08, -0.81)	<0.0001			
Median.HH.Income	-0.96 (-1.08, -0.84)	<0.0001			
Hispanic.Am	-7.98 (-8.39, -7.57)	<0.0001			
<i>4-Way Interactions with Cannabis</i>					
Cauc.Am.THc.Exposure	4.06 (3.7, 4.42)	<0.0001	2083.733	2174.869	-1016.866
Asian.THc.Exposure	0.91 (0.83, 0.99)	<0.0001			
Cigarettes: Analgesics	1621.82 (1233.55, 2010.1)	<0.0001			
Cigarettes	4946.23 (3744.11, 6148.36)	<0.0001			
Cauc.Am	8.06 (5.71, 10.41)	<0.0001			
Cigarettes: Cannabis: Analgesics	480.35 (337.18, 623.51)	<0.0001			
Cigarettes: Cannabis	1462.8 (1017.39, 1908.22)	<0.0001			
Alcohol.Abuse: Analgesics	4086.78 (2807.4, 5366.17)	<0.0001			
Alcohol.Abuse	12104.21 (8150.79, 16057.62)	<0.0001			
Alcohol.Abuse: Cannabis: Analgesics	1102.5 (626.32, 1578.68)	<0.0001			
Alcohol.Abuse: Cannabis	3224.18 (1743.59, 4704.78)	<0.0001			
Cigarettes: Alcohol.Abuse: Cannabis	-17394.37 (-23740.4, -11048.35)	<0.0001			
Cannabis	-286.85 (-391.41, -182.28)	<0.0001			

Cigarettes: Alcohol.Abuse: Cannabis: Analgesics	-5802.53 (-7852.78, -3752.27)	<0.0001			
Cannabis: Analgesics	-95.46 (-128.93, -62)	<0.0001			
Cigarettes: Alcohol.Abuse	-60908.76 (-77951.49, -43866.03)	<0.0001			
Cigarettes: Alcohol.Abuse: Analgesics	-20233.76 (-25770.67, -14696.85)	<0.0001			
Analgesics	-336.46 (-426.72, -246.2)	<0.0001			
Afric.Am	-0.69 (-0.87, -0.51)	<0.0001			
Asian.Am	-1.16 (-1.47, -0.86)	<0.0001			
Median.HH.Income	-1.02 (-1.13, -0.91)	<0.0001			
Afric.Am. THC.Exposure	-3.65 (-4.01, -3.3)	<0.0001			
5-Way Interactions with Cannabinoids					
Cauc.Am. THC.Exposure	8.51 (7.99, 9.03)	<0.0001	2083.381	2174.517	-1016.69
Asian. THC.Exposure	1.177 (1.09, 1.27)	<0.0001			
Cigarettes: THC.Exposure: Cannabigerol.Exposure	465.801 (385, 547.09)	<0.0001			
Analgesics	0.559 (0.45, 0.67)	<0.0001			
Cigarettes: THC.Exposure	1496.707 (1190, 1805.27)	<0.0001			
Alcohol.Abuse: THC.Exposure: Cannabigerol.Exposure	1352.223 (1070, 1631.66)	<0.0001			
Alcohol.Abuse: THC.Exposure	4316.283 (3240, 5391.08)	<0.0001			
Cigarettes: Cannabigerol.Exposure	201.087 (130, 272.14)	<0.0001			
Cigarettes	643.833 (413, 874.77)	<0.0001			
Cauc.Am	8.728 (5.17, 12.29)	<0.0001			
Alcohol.Abuse: Cannabigerol.Exposure	569.126 (335, 802.89)	<0.0001			
Alcohol.Abuse	1781.128 (1020, 2541.34)	<0.0001			
Cannabigerol.Exposure	-41.58 (-58, -25.12)	<0.0001			
Cigarettes: Alcohol.Abuse	-8898.557 (-12200, -5638.91)	<0.0001			
Cigarettes: Alcohol.Abuse: Cannabigerol.Exposure	-2807.926 (-3810, -1805.22)	<0.0001			
THC.Exposure	-324.953 (-399, -250.66)	<0.0001			
Cigarettes: Alcohol.Abuse: THC.Exposure	-20546.282 (-25000, -16089.52)	<0.0001			
THC.Exposure: Cannabigerol.Exposure	-99.945 (-119, -80.66)	<0.0001			
Cigarettes: Alcohol.Abuse: THC.Exposure: Cannabigerol.Exposure	-6441.429 (-7620, -5264.54)	<0.0001			
Asian.Am	-1.607 (-1.89, -1.33)	<0.0001			
Hispanic.Am	-4.5 (-5.05, -3.95)	<0.0001			
Afric.Am. THC.Exposure	-6.43 (-6.83, -6.03)	<0.0001			

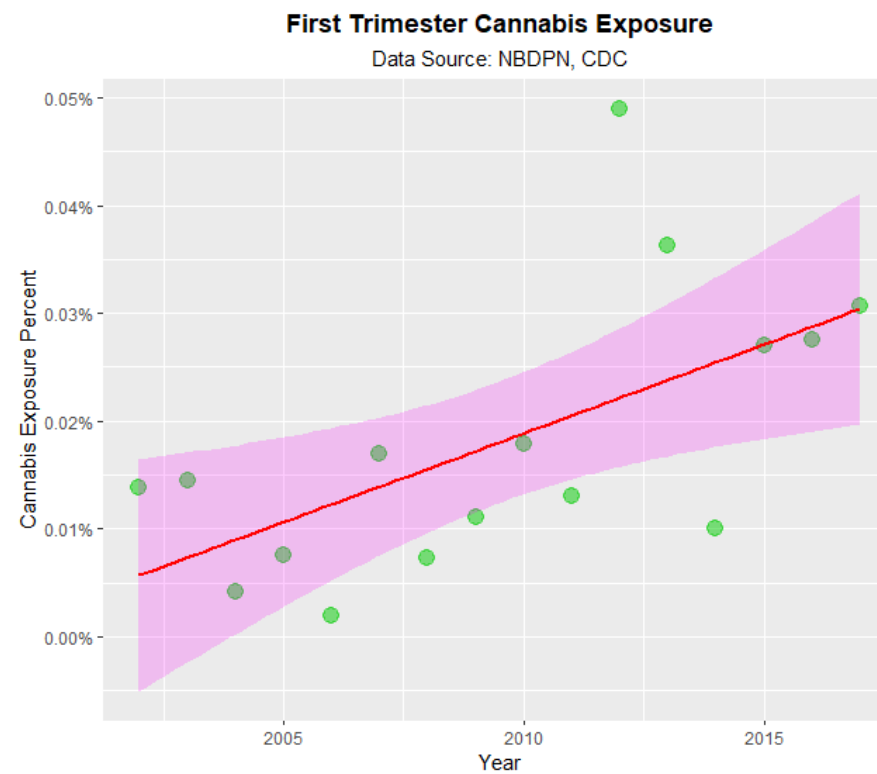
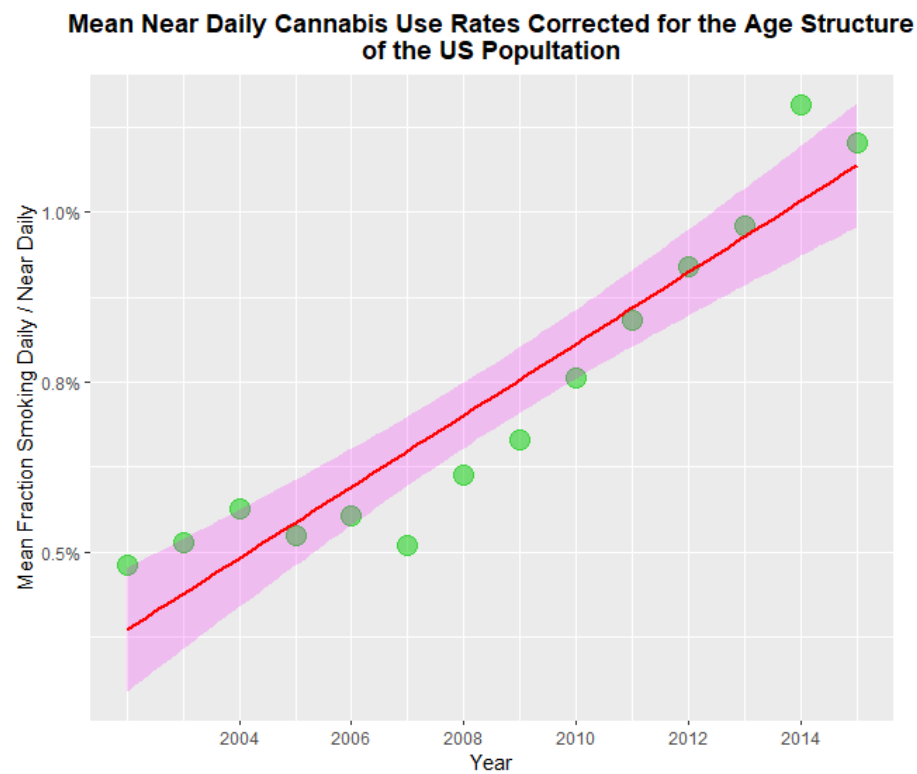
Supplementary Figures

Supplementary Figure 1.: Limb Reduction Rate by State – Facetted Plot

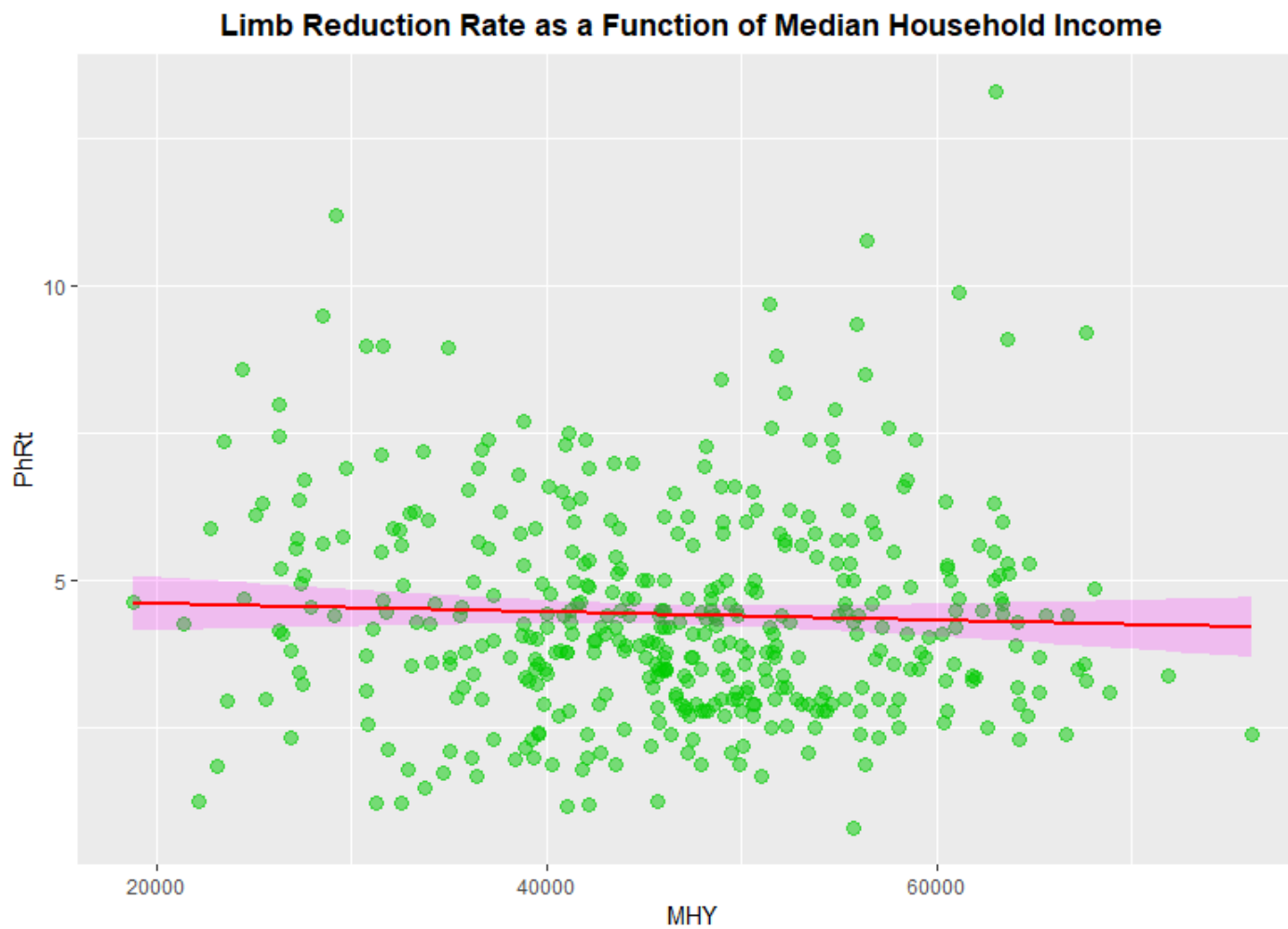
Supplementary Figure 2.: Limb Reduction Rate by State – Geo-facetted Plot



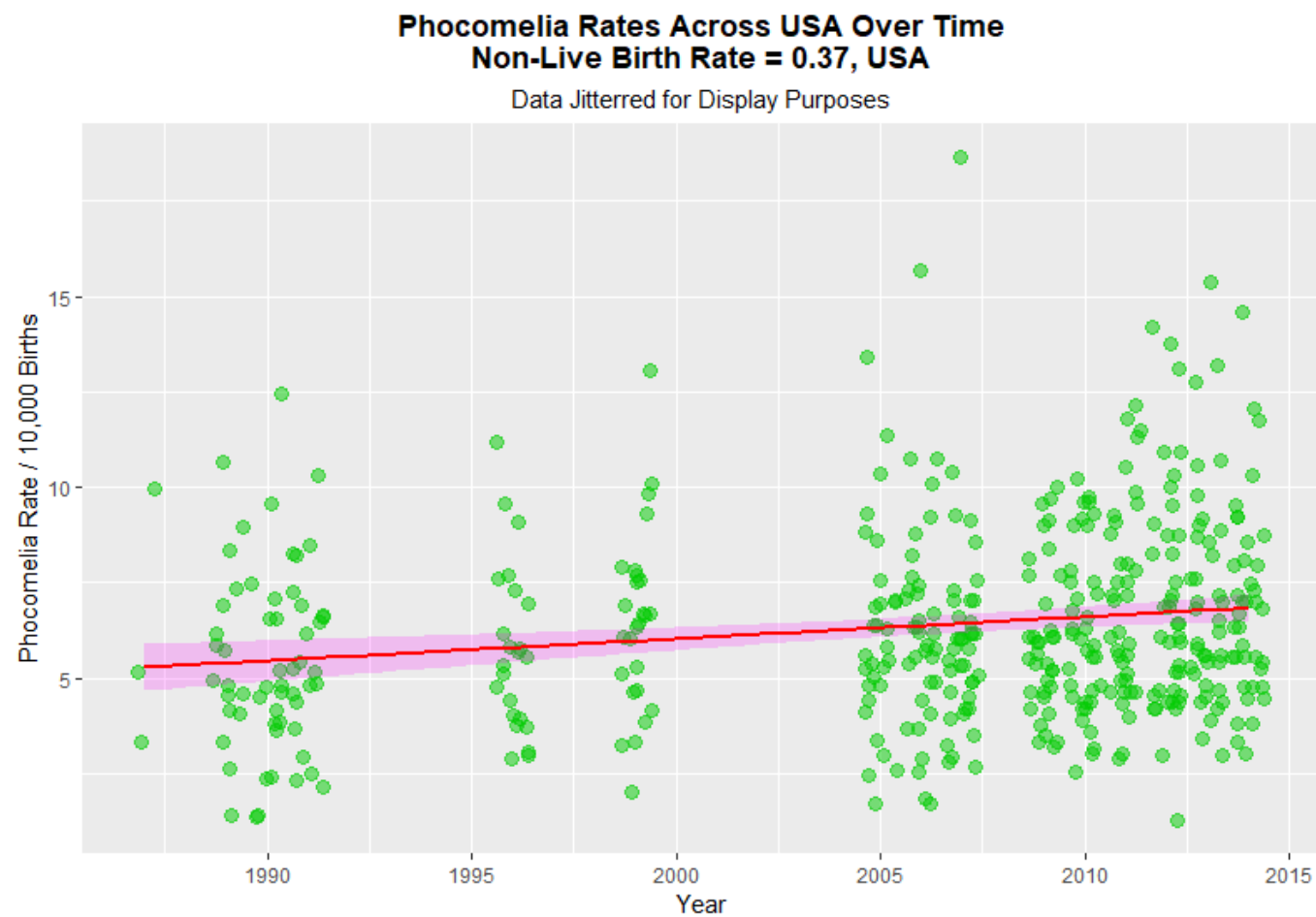
Supplementary Figure 3.: Daily Cannabis Use – General and in Pregnancy



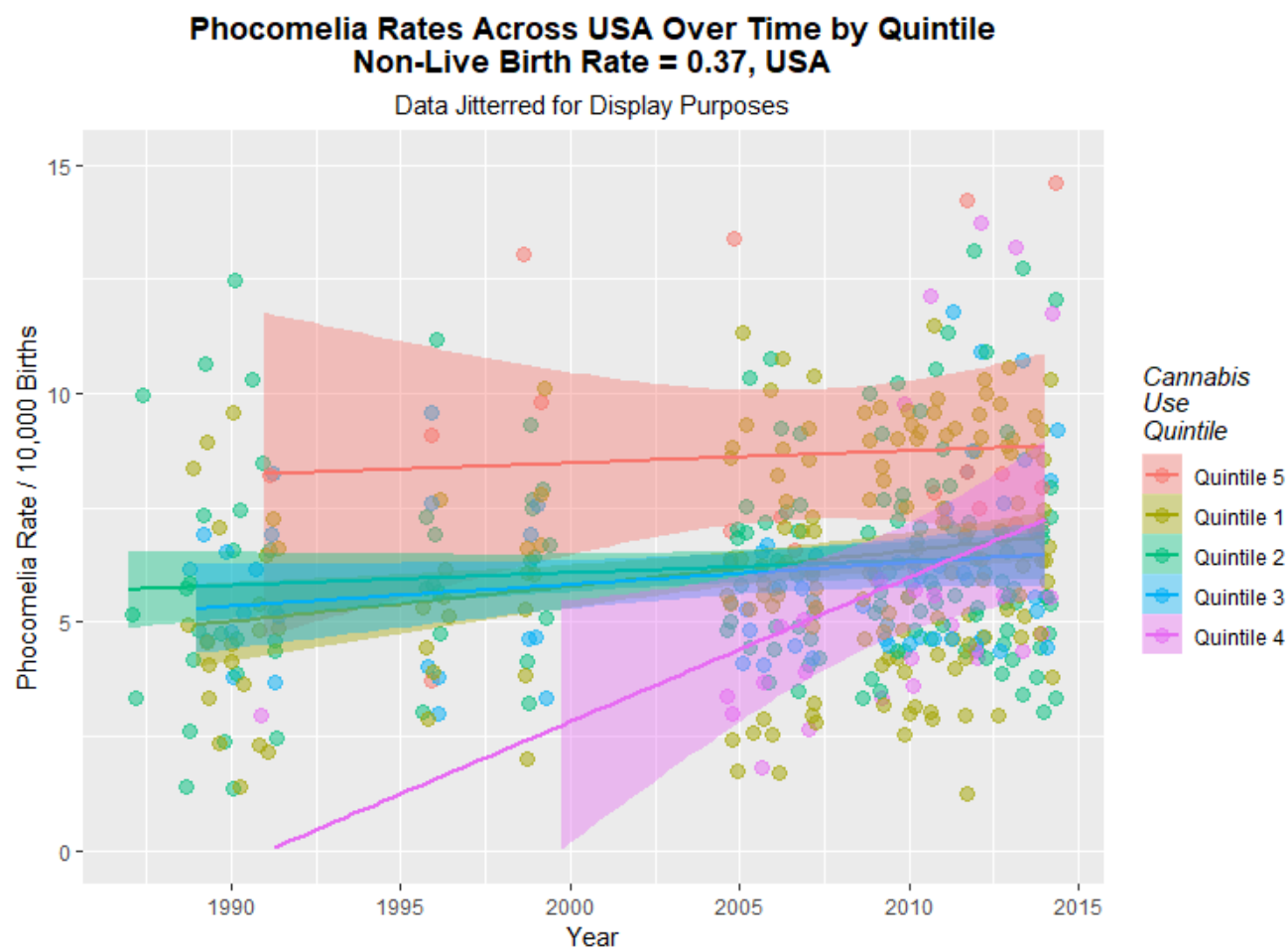
Supplementary Figure 4.: Limb Reduction Rate Median Household Income (MHY)



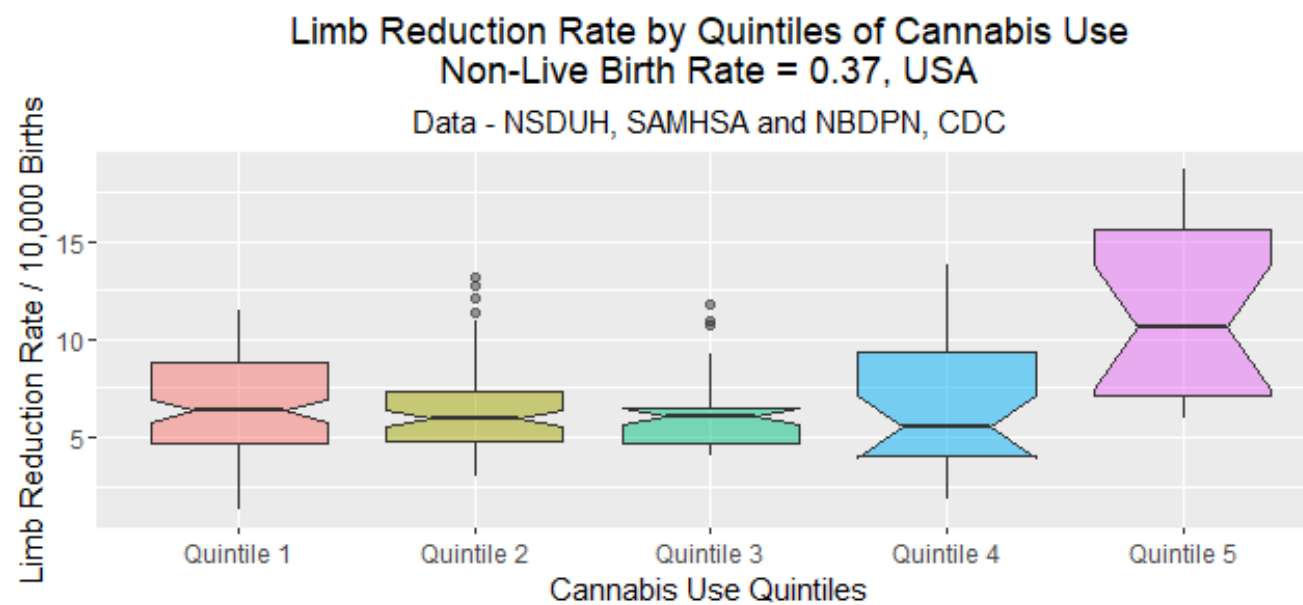
Supplementary Figure 5.: LR Non-Live Birth Rate – Scaled with USA Silent Factor, 37%



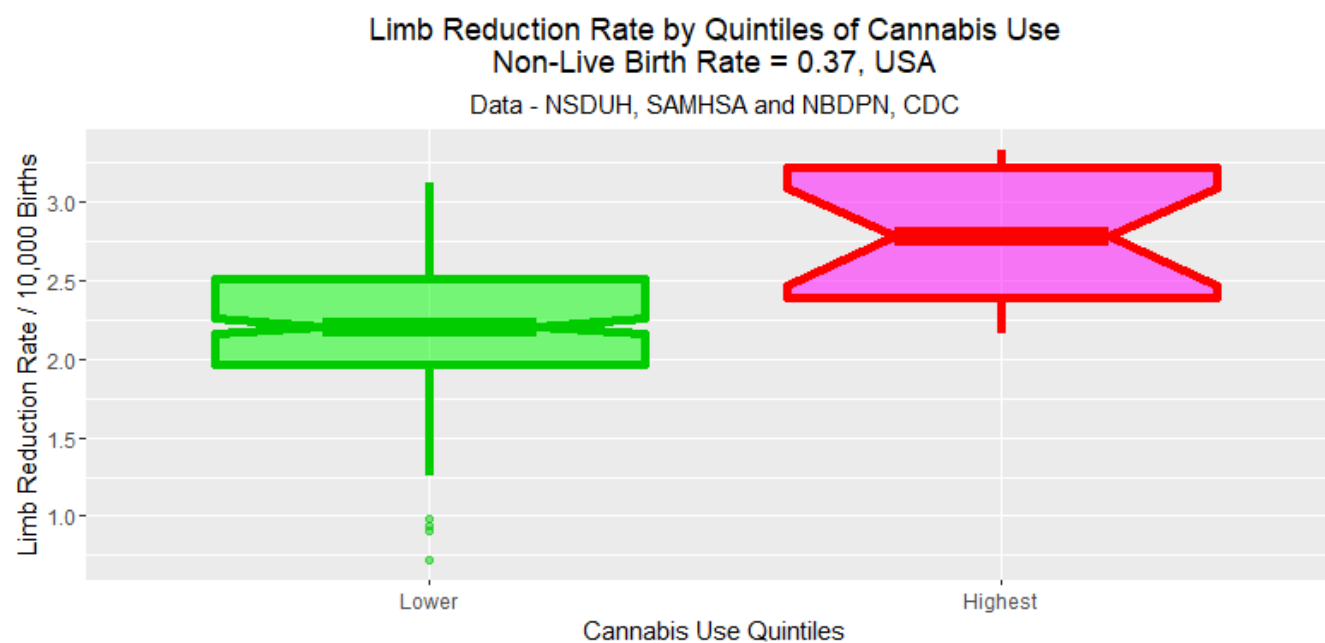
Supplementary Figure 6: LRR Over Time by Quintile Corrected for USA Silent Factor

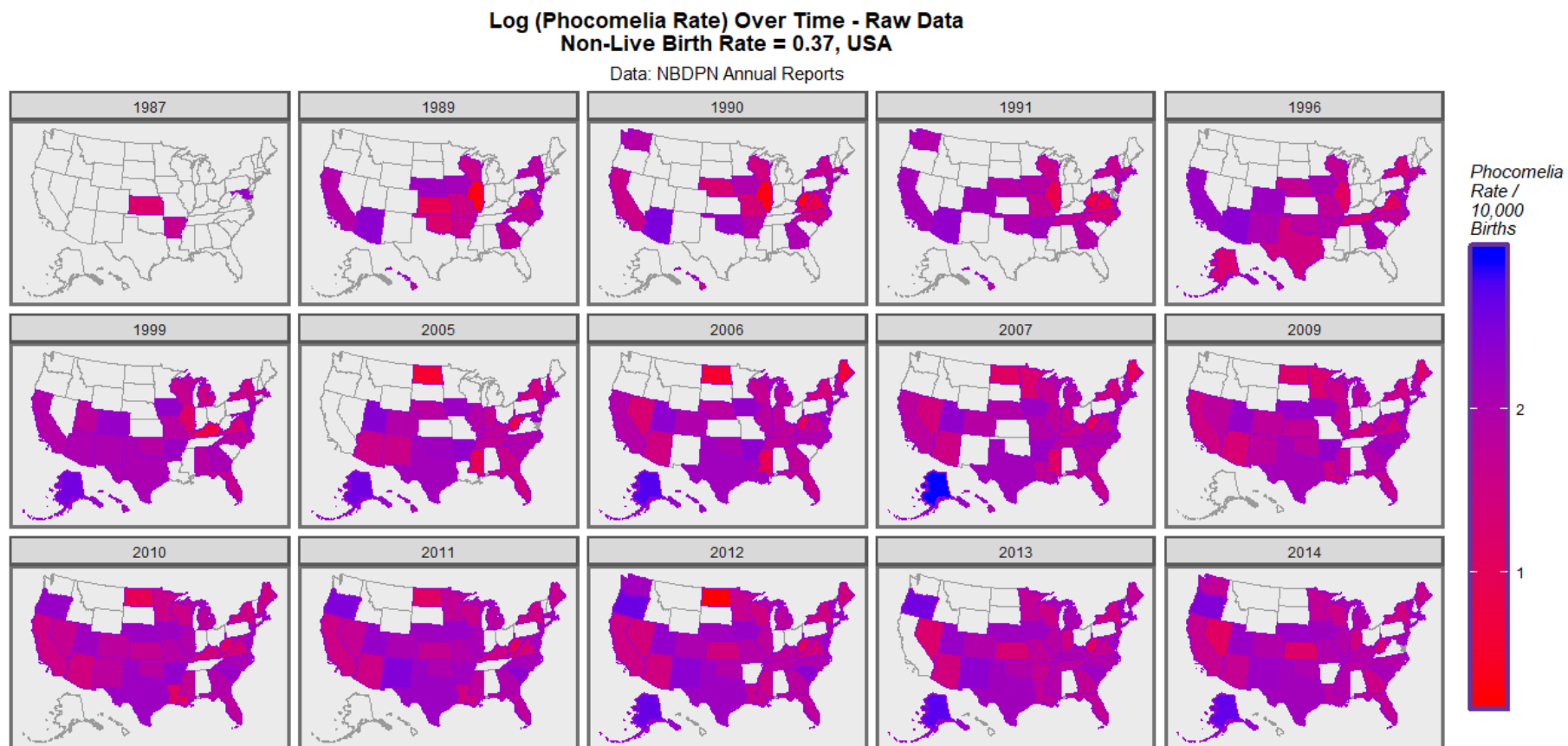


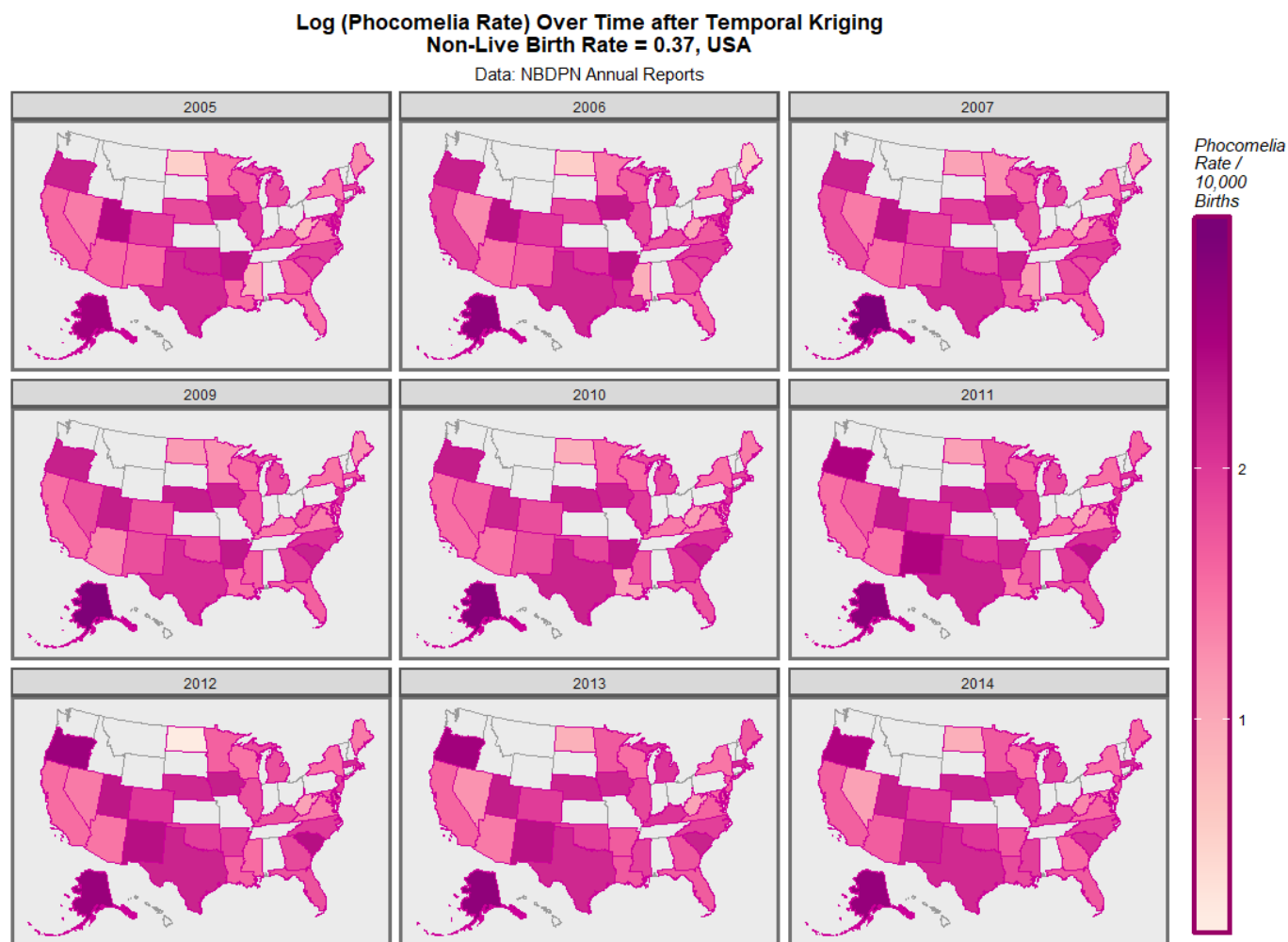
Supplementary Figure 7: LRR Boxplots by Quintile Corrected for USA Silent Factor



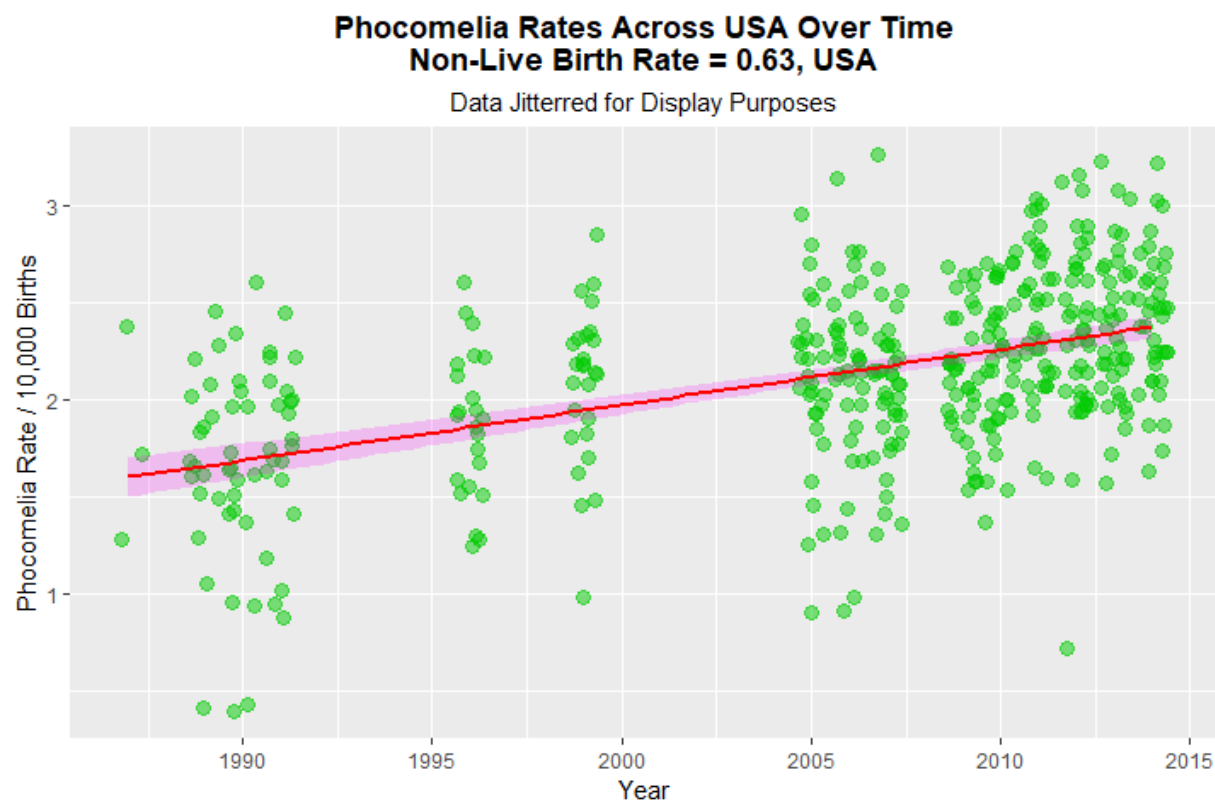
Supplementary Figure 8.: LRR Boxplots by Dichotomized Quintile Corrected for USA Silent Factor



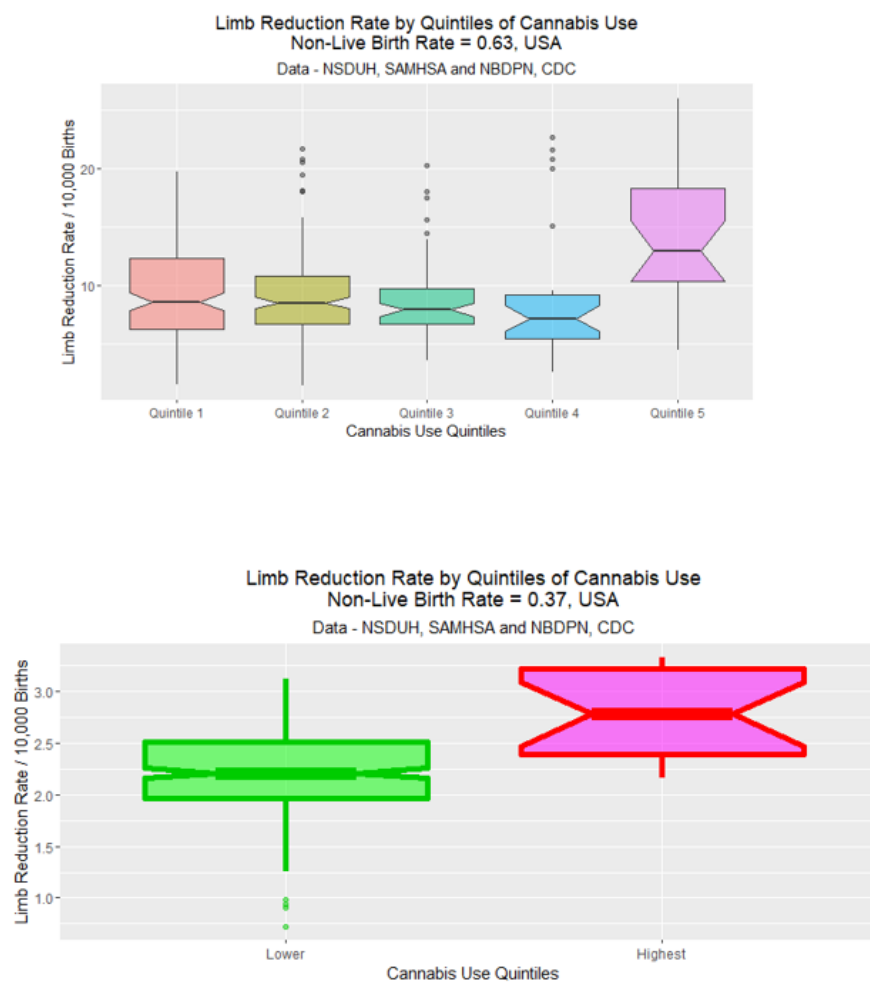
Supplementary Figure 9.: Map-Graphs of LRR Corrected for USA Silent Factor – Raw Data

Supplementary Figure 10.: Map-Graphs of LRR Corrected for USA Silent Factor – Kriged Data

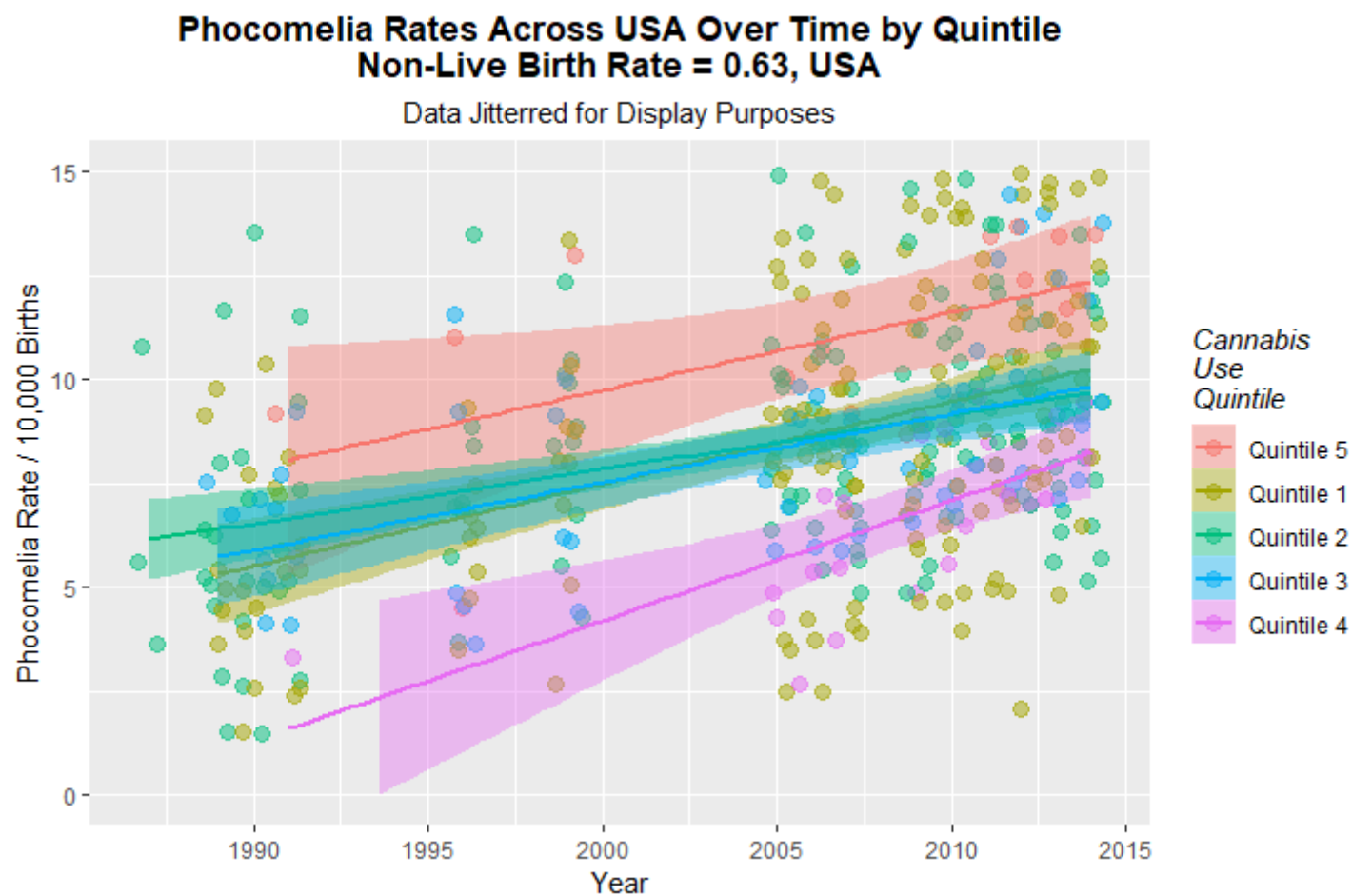
Supplementary Figure 11.: LR Non-Live Birth Rate Over Time – Scaled with International Silent Factor, 63%

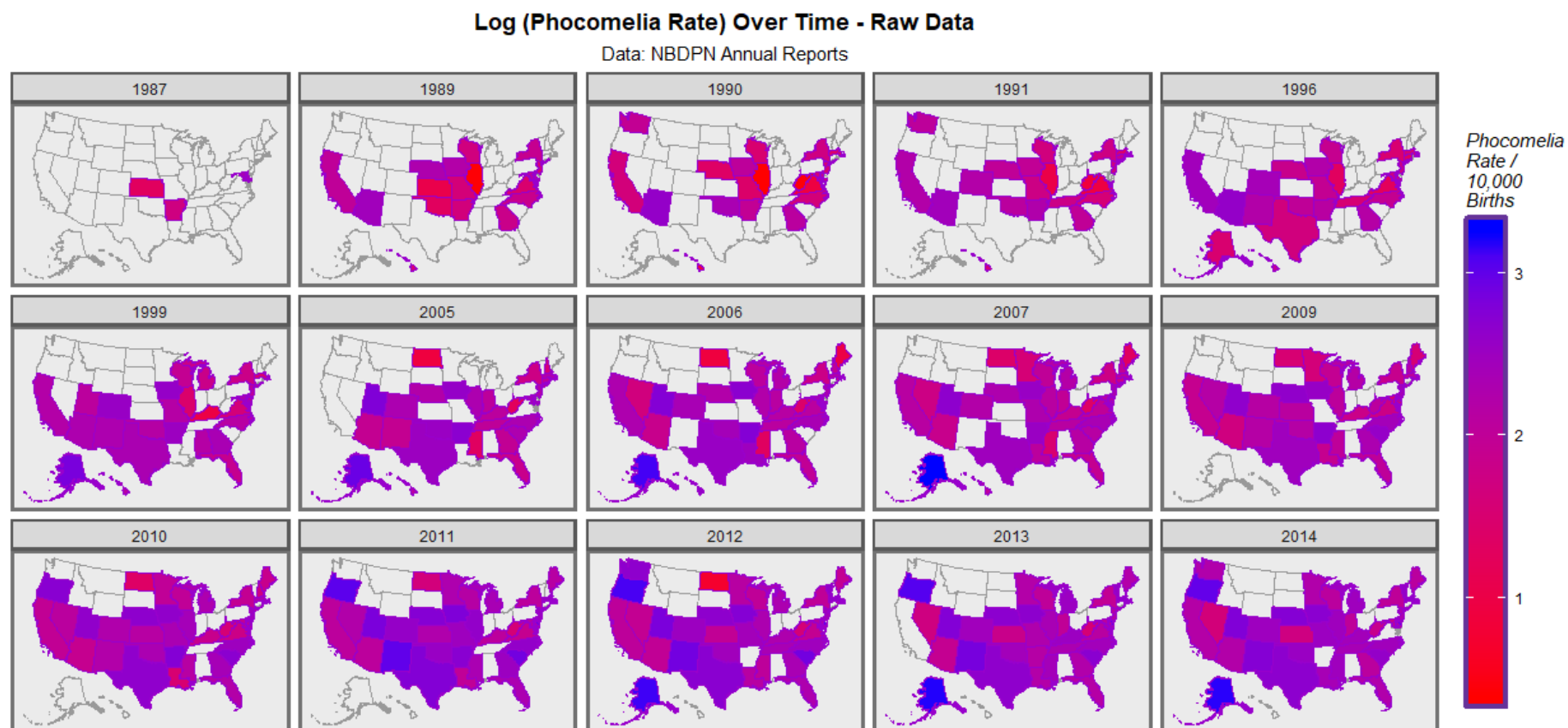


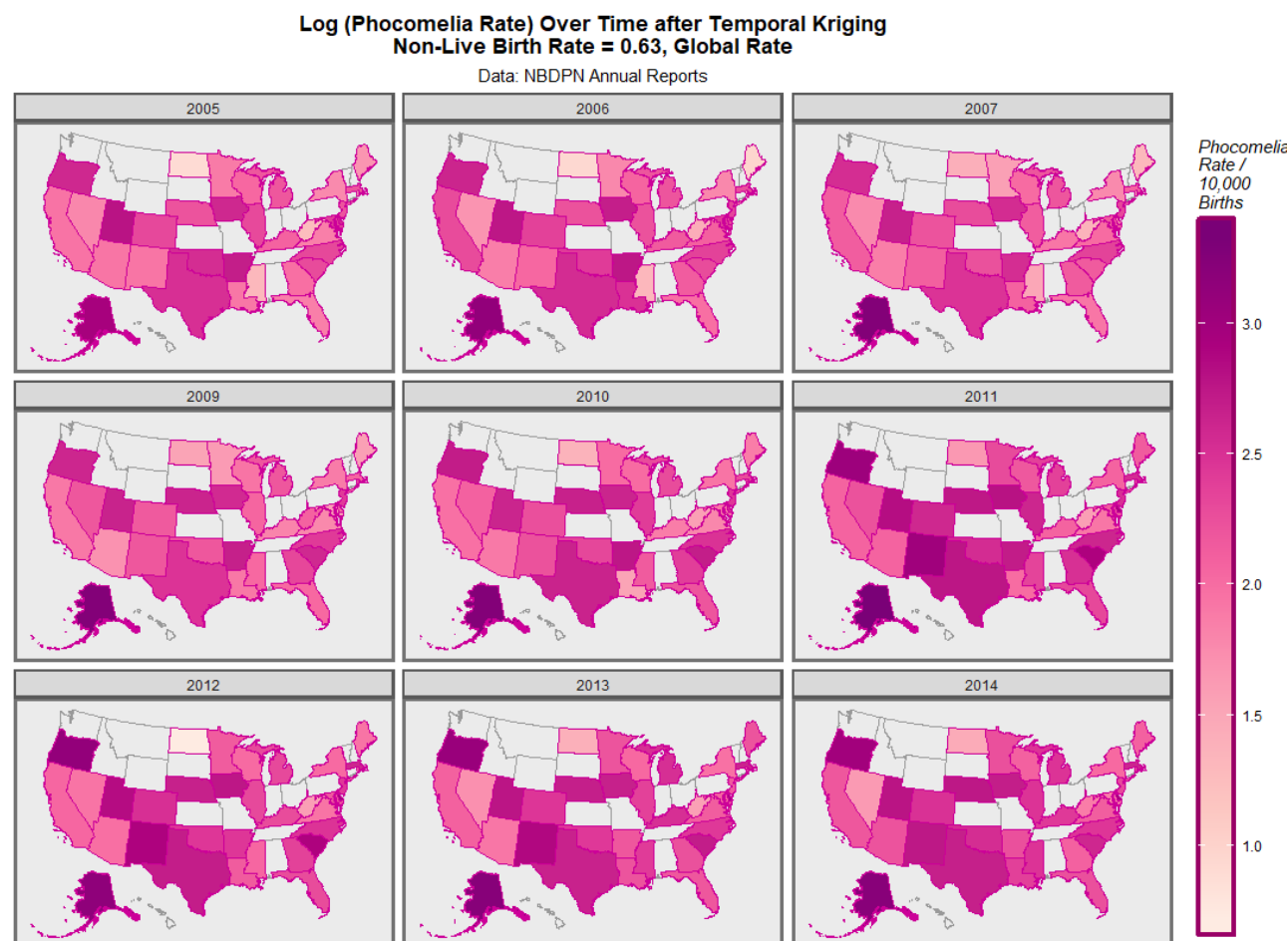
Supplementary Figure 12: LR Non-Live Birth Rate Boxplots – Scaled with International Silent Factor, 63%



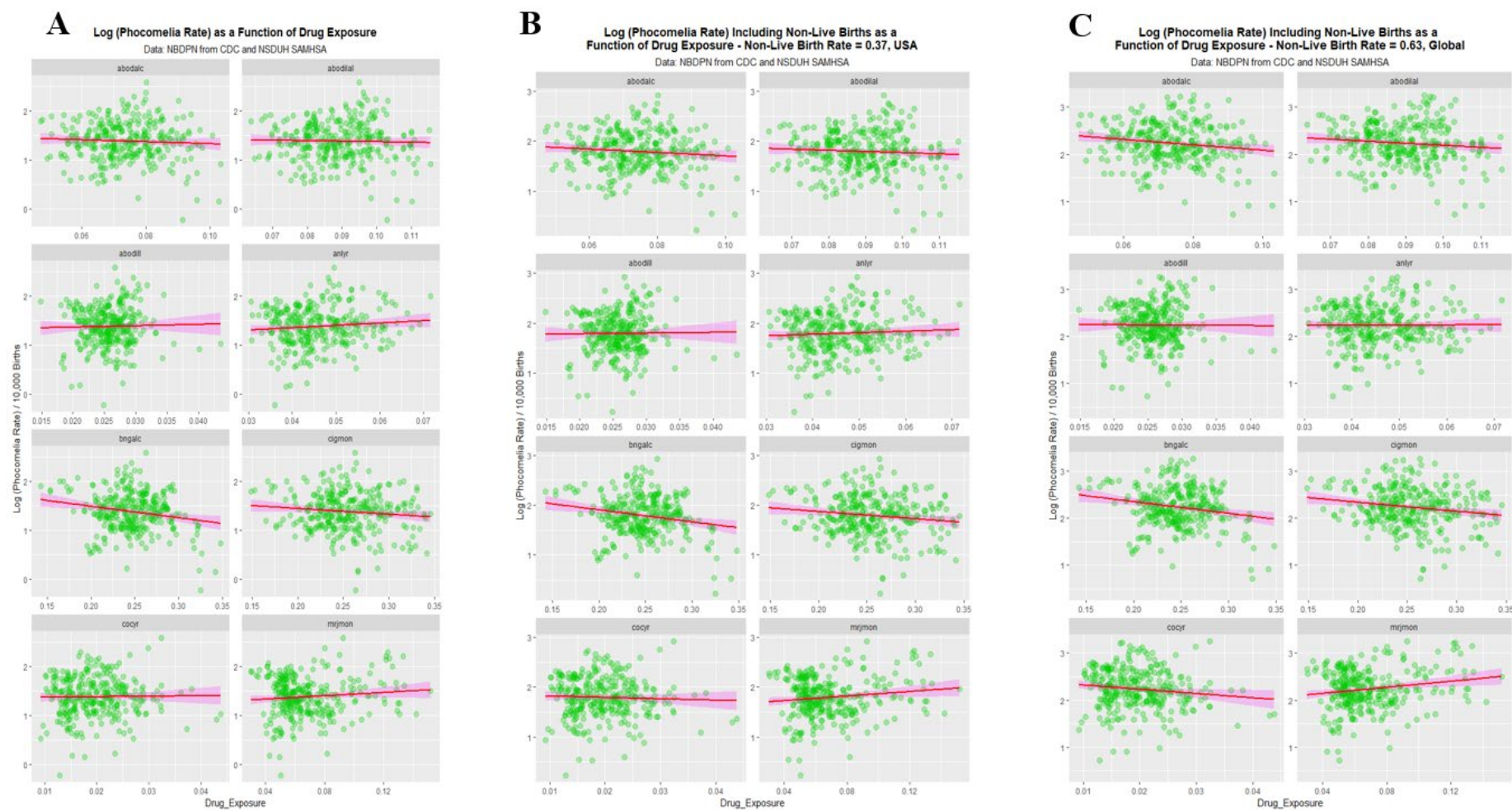
Supplementary Figure 13.: LR Non-Live Birth Rate Over Time by Quintiles – Scaled with International Silent Factor



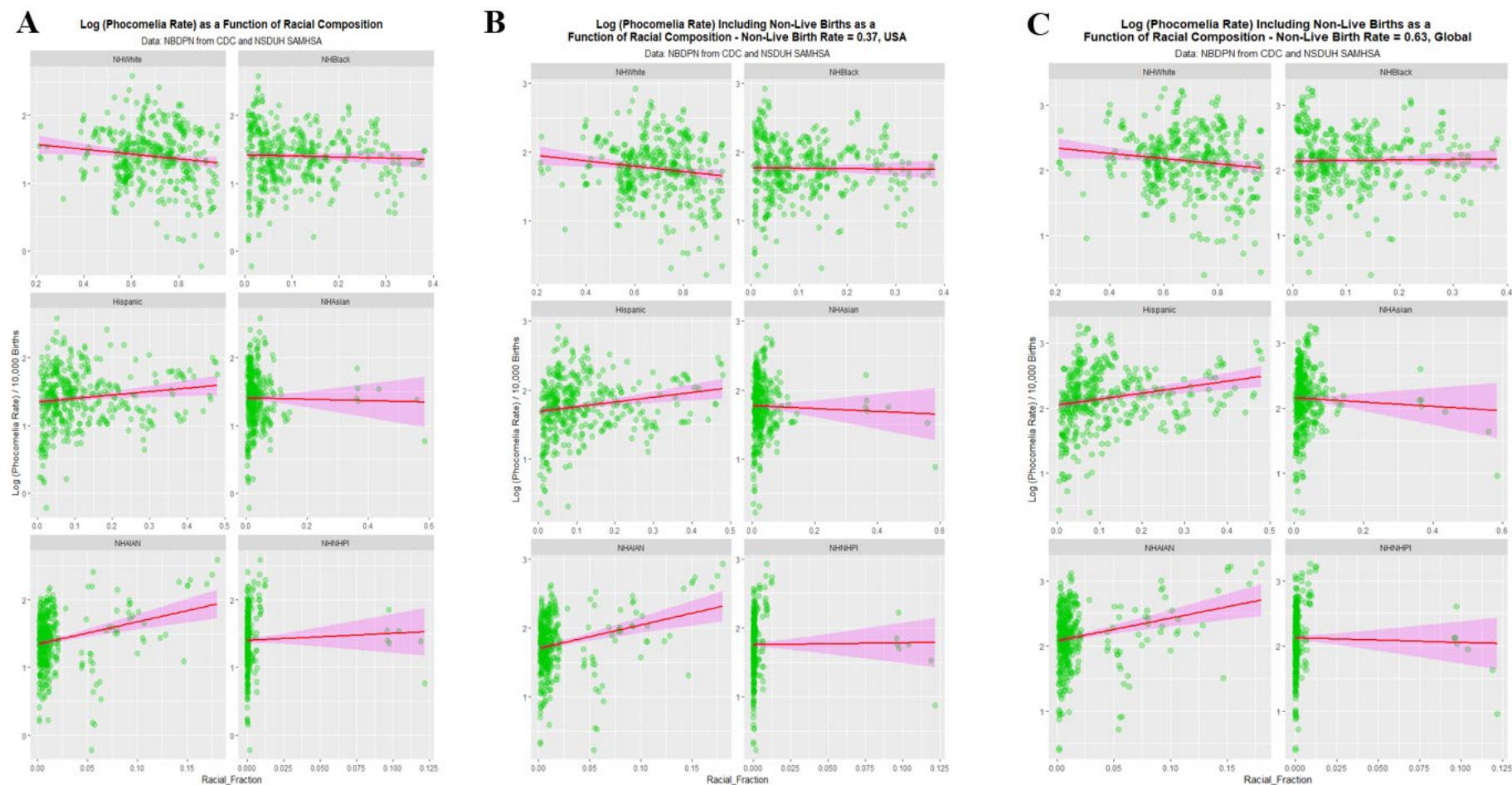
Supplementary Figure 14.: Map-Graphs of LRR Over Time – Adjusted with International Silent Factor – Raw Data

Supplementary Figure 15.: Map-Graphs of LRR Over Time – Adjusted with International Silent Factor – Kriged Data

Supplementary Figure 16.: Drug Exposure Plots for Hidden Factors of 0%, 37% and 63%



Supplementary Figure 17.: Ethnic Composition Plots for Hidden Factors of 0%, 37% and 63%



Supplementary Figure 18.: Effects of Registry Ascertainment and Case Finding Practices

