

Trans-ethnic Mendelian randomization study reveals causal relationships between cardio-metabolic factors and chronic kidney disease

Jie Zheng, PhD^{1*,§}; YueMiao Zhang, MD, PhD^{2*,§}; Humaira Rasheed, PhD^{1,3*,§}; Venexia Walker, PhD^{1,4,§}; Yuka Sugawara, MD, PhD^{5,§}; JiaChen Li, MSc^{6,§}; Yue Leng, PhD^{7,§}; Benjamin Elsworth, PhD¹; Robyn E. Wootton, PhD¹; Si Fang, MSc¹; Qian Yang, MPhil¹; Stephen Burgess, PhD^{8,9}; Philip C. Haycock, PhD¹; Maria Carolina Borges, PhD¹; Yoonsu Cho, PhD¹; Rebecca Carnegie, PhD¹; Amy Howell, MSc¹; Jamie Robinson, MSc¹; Laurent F Thomas, PhD^{3,10}; Ben Michael Brumpton, PhD^{1,3,11}; Kristian Hveem, PhD³; Stein Hallan, PhD^{10,12}; Nora Franceschini, MD, MPH¹³; Andrew P. Morris, PhD¹⁴; Anna Köttgen, MD¹⁵; Cristian Pattaro¹⁶, PhD; Matthias Wuttke, MD¹⁵; Masayuki Yamamoto¹⁷, MD, PhD; Naoki Kashihara, MD, PhD¹⁸; Masato Akiyama, PhD^{19,20}; Masahiro Kanai, PhD^{21,22}; Koichi Matsuda, PhD²³; Yoichiro Kamatani, PhD^{24,25}; Yukinori Okada, PhD^{26,27,28}; Min Xu, MD, PhD^{29,§}; YuFang Bi, MD, PhD^{29,§}; Guang Ning, MD, PhD^{29,§}; George Davey Smith, MD, DSc^{1,30,§}; Sean Barbour, MD^{31,32,§}; CanQing Yu, PhD^{6,§}; Bjørn Olav Åsvold, PhD^{3,33,§}; Hong Zhang, MD, PhD^{2*,§}; Tom R. Gaunt, PhD^{1,30*,§}

¹ MRC Integrative Epidemiology Unit (IEU), Bristol Medical School, University of Bristol, Oakfield House, Oakfield Grove, Bristol, BS8 2BN, United Kingdom

² Renal Division, Peking University First Hospital, Peking University Institute of Nephrology, Key Laboratory of Renal Disease, Ministry of Health of China, Key Laboratory of Chronic Kidney Disease Prevention and Treatment (Peking University), Ministry of Education, Beijing, People's Republic of China.

³ K.G. Jebsen Center for Genetic Epidemiology, Department of Public Health and Nursing, NTNU, Norwegian University of Science and Technology, Trondheim, Norway

⁴ Department of Surgery, University of Pennsylvania Perelman School of Medicine, Philadelphia, PA, USA

⁵ Division of Nephrology and Endocrinology, The University of Tokyo Hospital, 7-3-1 Hongo, Bunkyo-ku, Tokyo 113-8655, Japan.

⁶ Department of Epidemiology and Biostatistics, School of Public Health, Peking University, 38 Xueyuan Road, Beijing, 100191, China

⁷ Department of Psychiatry, University of California, San Francisco, USA

⁸ MRC Biostatistics Unit, Cambridge Institute of Public Health, Cambridge CB2 0SR, UK

⁹ Cardiovascular Epidemiology Unit, Department of Public Health and Primary Care, University of Cambridge, Cambridge, UK

¹⁰ Department of Clinical and Molecular Medicine, NTNU, Norwegian University of Science and Technology, Trondheim

¹¹ Department of Thoracic Medicine, St. Olavs Hospital, Trondheim University Hospital, Trondheim, Norway

¹² Department of Nephrology, St. Olavs Hospital, Trondheim University Hospital, Trondheim, Norway

¹³ Department of Epidemiology, University of North Carolina, Chapel Hill, NC 27516 USA

¹⁴ Division of Musculoskeletal and Dermatological Sciences, University of Manchester, Manchester, UK

¹⁵ Institute of Genetic Epidemiology, Department of Biometry, Epidemiology and Medical Bioinformatics, Faculty of Medicine and Medical Center—University of Freiburg, Freiburg, Germany

¹⁶ Eurac Research, Institute for Biomedicine (affiliated with the University of Lübeck), Bolzano, Italy

¹⁷ Tohoku Medical Megabank Organization and Tohoku University Graduate School of Medicine, Tohoku University, 2-1 Seiryō-machi, Aoba-ku, Sendai, Miyagi 980-8573, Japan.

¹⁸ Department of Nephrology and Hypertension, Kawasaki Medical School, 577 Matsushima, Kurashiki, Okayama 701-0192, Japan.

¹⁹ Laboratory for Statistical Analysis, RIKEN Center for Integrative Medical Sciences, Yokohama 230-0045, Japan.

²⁰ Department of Ophthalmology, Graduate School of Medical Sciences, Kyushu University, Fukuoka 812-8582, Japan.

²¹ Department of Biomedical Informatics, Harvard Medical School, Boston, MA 02115, USA.

²² Department of Statistical Genetics, Osaka University Graduate School of Medicine, Suita 565-0871, Japan.

²³ Department of Computational Biology and Medical Sciences, Graduate school of Frontier Sciences, the University of Tokyo, Tokyo 108-8639, Japan.

²⁴ Laboratory for Statistical Analysis, RIKEN Center for Integrative Medical Sciences, Yokohama 230-0045, Japan.

²⁵ Laboratory of Complex Trait Genomics, Department of Computational Biology and Medical Sciences, Graduate School of Frontier

Sciences, the University of Tokyo, Tokyo 108-8639, Japan.

²⁶ Department of Statistical Genetics, Osaka University Graduate School of Medicine, Suita 565-0871, Japan.

²⁷ Laboratory of Statistical Immunology, Immunology Frontier Research Center (WPI-IFReC), Osaka University, Suita 565-0871, Japan.

²⁸ Integrated Frontier Research for Medical Science Division, Institute for Open and Transdisciplinary Research Initiatives, Osaka University, Suita 565-0871, Japan.

²⁹ Department of Endocrine and Metabolic Diseases, Shanghai Institute of Endocrine and Metabolic Diseases, Ruijin Hospital, Shanghai Jiao Tong University School of Medicine, Shanghai, China

³⁰ NIHR Biomedical Research Centre at the University Hospitals Bristol NHS Foundation Trust and the University of Bristol, United Kingdom

³¹ Division of Nephrology, University of British Columbia, Vancouver, British Columbia, Canada

³² British Columbia Provincial Renal Agency, Vancouver, British Columbia, Canada

³³ Department of Endocrinology, St. Olavs Hospital, Trondheim University Hospital, Trondheim, Norway

* Equal contribution

+ Corresponding author

§ CKD MR working group

Abstract

BACKGROUND The chronic kidney disease (CKD) public health burden is substantial and has not declined as expected with current interventions on disease treatments. A large number of clinical, biological, and behavioural risk factors have been associated with CKD. However, it is unclear which of them are causal.

OBJECTIVE To systematically test whether previously reported risk factors for CKD are causally related to the disease in European and East Asian ancestries.

DESIGN Two-sample Mendelian randomization (MR) and non-linear MR analyses.

PARTICIPANTS 53,703 CKD cases and 960,624 controls of European ancestry from CKDGen, UK Biobank and HUNT, and 13,480 CKD cases and 238,118 controls of East Asian ancestry from Biobank Japan, China Kadoorie Biobank and Japan-Kidney-Biobank/ToMMo.

MEASURES Systematic literature mining of PubMed studies identified 45 clinical risk factors and biomarkers with robustly associated genetic variants, including phenotypes related to blood pressure, diabetes, glucose, insulin, lipids, obesity, smoking, sleep disorders, nephrolithiasis, uric acid, coronary artery disease, bone mineral density, homocysteine, C-reactive protein, micro-nutrients and thyroid function, which were selected as exposures. The outcome was CKD (defined by clinical diagnosis or by estimated glomerular filtration rate (eGFR) < 60 ml/min/1.73m²).

RESULTS Eight risk factors showed evidence of causal effects on CKD in European ancestry, including body mass index (BMI), hypertension, systolic blood pressure, high density lipoprotein cholesterol, apolipoprotein A-I, lipoprotein A, type 2 diabetes (T2D) and nephrolithiasis. In East Asian ancestry, BMI, T2D and nephrolithiasis showed evidence of causal effects on CKD. Hypertension showed reliable evidence of a strong causal effect on CKD in Europeans but in contrast appeared to show a null effect in East Asians, suggesting the possibility of different causal risk factors in Europeans and East Asians. Although liability to T2D showed consistent effects on CKD, the effect of glycemic traits on CKD was weak, suggesting T2D may have glucose-independent mechanisms to influence CKD. Non-linear MR indicated a threshold relationship between genetically predicted BMI and CKD, with increased risk at BMI above 25 kg/m².

LIMITATION Due to the unbalanced distribution of data between ancestries, we could only test 17 of the 45 risk factors in East Asian participants.

CONCLUSIONS Eight CKD-associated risk factors showed evidence of causal effects on the disease in over 1.2 million European and East Asian ancestries. These risk factors were predominantly related to cardio-metabolic health, which supports the shared causal link between cardio-metabolic health and kidney function. This study provides evidence of potential intervention targets for primary prevention of CKD, which could help reduce the global burden of CKD and its cardio-metabolic co-morbidities.

Research in context

Evidence before this study

Chronic kidney disease (CKD) has a major effect on global health, both as a direct cause of morbidity and mortality, and as an important complication for cardio-metabolic diseases. However, even with the existing interventions, the burden of CKD has not declined as expected over the last 30 years. Existing epidemiological studies of CKD have mainly focused on disease treatment in patients from specific populations and estimated association rather than causality. A systematic assessment of the causal determinants of CKD in different populations is urgently needed, to help promote a shift from treatment of CKD patients to prevention of the disease in high-risk groups. The use of genetic data and the latest Mendelian randomization (MR) methodologies offers a cost-effective way to evaluate the potential intervention targets for prevention of CKD in high-risk groups.

Added value of this study

In this study, we systematically constructed a causal atlas of 45 risk factors on CKD in European and East Asian ancestries using MR. To maximise power of these analyses and accuracy of the findings, we collected and harmonised CKD genetic association data from six large-scale biobanks (in over 1.1 million Europeans and 250,000 East Asians). By applying a comprehensive MR framework, including linear two-sample MR, bidirectional MR, multivariable MR and non-linear MR approaches, we identified eight risk factors with reliable evidence of causal effects on CKD in European ancestry studies, including body mass index (BMI), hypertension, systolic blood pressure, high density lipoprotein cholesterol, apolipoprotein A-I, lipoprotein A, type 2 diabetes (T2D) and nephrolithiasis. In East Asian studies, BMI, T2D and nephrolithiasis also showed causal effects on CKD. Among other factors, hypertension showed reliable evidence of a strong causal effect on CKD in Europeans but in contrast appeared to show a null effect in East Asians. This MR finding together with previous literature evidence opens up the possibility that hypertension could play different causal roles on CKD across ancestries. For diabetes and glycemic phenotypes, our MR and sensitivity analyses suggested the causal role of liability of T2D on CKD but suggested weak effects of glycemic phenotypes on CKD. This aligns with the recent trial of SGLT2 inhibitors on kidney disease, which implies T2D may have glucose-independent mechanisms to influence CKD. For lipids phenotypes, we found good evidence to support the role of high-density lipoprotein cholesterol on CKD and further suggested the effects of two lipids targets: circulating CETP level and lipoprotein A concentration. For body weight, our study quantified a threshold relationship between BMI and CKD, with increased risk at BMI above 25 kg/m². The causal relationship between nephrolithiasis and CKD were reported in previous studies, but our study confirmed the causal links between the two for the first time.

Implication of all the available evidence

This study makes a significant advance in comprehensively prioritising intervention targets for CKD in over 1.2 million participants. Our study presents causal evidence from both European and East Asian population samples, widening the generalisability of the causal atlas. Importantly, the prioritised risk factors are predominantly related to cardio-metabolic health, which supports the shared causal link between cardio-metabolic health and kidney function. Clinically, the high-quality evidence from this study highlights the value of exploring these causal factors in the general population and prioritizes drug targets and life-style interventions for CKD primary prevention, which could help reduce the global burden of CKD and its cardio-metabolic co-morbidities.

Chronic kidney disease (CKD) affects 10-15% of the population worldwide. It has a major effect on global health, both as a direct cause of morbidity and mortality, and as an important complication for cardio-metabolic diseases (1)(2)(3). From 1990 to 2017, the global age-standardized mortality for many important non-communicable diseases, such as cardiovascular disease, declined by 30.4%, but till now the mortality decline for CKD was only 2.8% (4). Therefore, reducing CKD incidence could be the next intervention target to reduce the burden of both CKD and its associated-complications globally (5). However, in reality, disease awareness of CKD is still deficient among the general public and health-care authorities. The majority of intervention trials have focused on disease treatment rather than primary prevention of CKD. In the literature, impaired fasting glucose, high blood pressure and high body-mass index are among the leading risk factors for CKD. However, even with the interventions on controlling glucose and blood pressure, the burden of CKD has not declined as expected (4). Thus, a systematic assessment of the causal determinants of CKD is urgently needed, which will help promote a shift from treatment of CKD patients to prevention of the disease in high-risk groups.

Well-designed and well-powered randomized controlled trials (RCTs) are usually the best approach to estimate a causal relationship between a risk factor and a disease. Currently, most published CKD studies were observational and/or RCTs in CKD patients, and these have identified risk factors for CKD progression. However, no reliable RCT evidence exists to support their causal roles on CKD incidence. Mendelian randomization (MR) is an epidemiological method that can be used to obtain evidence about the effect of modifying intervention targets (6). MR exploits the random allocation of genetic variants at conception and is therefore less susceptible to confounding and reverse causality than traditional observational studies. The increasing availability of genetic association resources provides a timely opportunity to test the causal effects of various risk factors on CKD and provide insights into the disease pathogenesis using MR (7)(8).

In this study, we aimed to investigate the causal effects of 45 previously reported risk factors on CKD in general European and East Asian populations. To achieve this, a systematic search of risk factors for CKD was conducted in PubMed using the literature mining tool MELODI (9)(10). A set of two-sample linear MR analyses was performed using CKD and estimated glomerular filtration rate (eGFR) summary data from over 1 million participants from CKDGen consortium (11), UK Biobank (12), Nord-Trøndelag Health (HUNT) Study (13), Biobank Japan (14), China Kadoorie Biobank (15) and Japan-Kidney-Biobank/ToMMo consortium, in conjunction with the largest available genome-wide

association study (GWAS) for risk factors in European and East Asian ancestries. A set of comprehensive follow-up analyses was carried out to understand the independent effect of key risk factors and the relationship between glycemic, blood pressure and lipid phenotypes on CKD. For key causal risk factors with MR evidence, non-linear MR (16)(17)(18) was performed in participants from UK Biobank and HUNT Study to investigate the optimal level of intervention.

METHODS

Study design

Our study consisted of four components (**Figure 1**). First, we identified 45 risk factors for CKD by mining the literatures in PubMed. Second, we estimated the causal effects of these risk factors on CKD prevalence and eGFR in CKDGen (11), UK Biobank (12), HUNT Study (13), Biobank Japan (14) and China Kadoorie Biobank (15) and Japan-Kidney-Biobank/ToMMo consortium separately using two-sample linear MR approach. We further evaluated the MR evidence based on the strength and consistency of MR evidence across MR methods and across studies and fitness of MR assumptions. Third, we conducted extensive follow-up analyses to confirm the findings for four types of cardio-metabolic risk factors: blood pressure phenotypes, BMI, blood lipid phenotypes and glycemic phenotypes on CKD. Finally, non-linear MR was performed to estimate the optimal level of BMI and fasting glucose for reducing CKD risk in UK Biobank and HUNT Study.

Selection of risk factors

CKD risk factors were identified from a literature review using the MELODI-Presto (9)(10) to search the PubMed database (for more details on this method see **Supplementary Note 1**). We identified 49 risk factors/phenotypes for CKD, including blood pressure phenotypes, diabetic phenotypes (glucose- and insulin-related phenotypes), lipids phenotypes, obesity, smoking, alcohol intake, sleep disorders, nephrolithiasis, serum uric acid, coronary artery disease, bone mineral density, homocysteine, C-reactive protein, micro-nutrient phenotypes (serum metals and vitamins), dehydration and thyroid phenotypes, were selected. By searching the largest available GWAS studies (but minimums the sample overlap with the outcome samples), we extracted genetic variants associated with 45 of 49 risk factors in European ancestry studies and with 17 of 49 risk factors in East Asian ancestry studies and used them as genetic instruments for the MR analyses (**Supplementary Table 1**, more details in **Supplementary Note 1**). To select the independent genetic variants, the genome wide significant SNPs were grouped by LD ($r^2 < 0.001$ for SNPs within 1Mb genomic region) and only the SNP with the lowest P value per group was kept (**Supplementary Table 2, 3**).

Association of genetic variants with CKD and eGFR

CKD was defined by clinical diagnosis (International Classification of Diseases (ICD) 10th Revision) in the UK Biobank (12) (the CKD cases were defined as participants with ICD10 code range from N17-N19; the participants with all types of kidney disorders [N00-

N29] were excluded from the controls to reduce the possibility of including CKD case in the control group), HUNT (13) and China Kadoorie Biobank (15); defined as eGFR <60 ml/min/1.73m² in CKDGen (11) and Biobank Japan (14) and defined as eGFR<60 ml/min/1.73m² and/or the presence of urine abnormality in the Japan-Kidney-Biobank/ToMMo consortium, where eGFR was estimated from serum creatinine using the Chronic Kidney Disease Epidemiology Collaboration (CKD-EPI) formula (19). The genetic associations with CKD and eGFR were reported in three studies of European ancestry (CKDGen: 41,395 cases, 439,303 controls, 8.7% diabetes patients; UK Biobank: 9,884 cases, 454,323 controls, 5.2% with diabetes; and HUNT Study: 2,424 cases, 66,998 controls, 4.9% with diabetes). The genetic associations with CKD were reported in three East Asian studies (Biobank Japan: 8,586 cases, 133,808 controls, 10.2% with diabetes; China Kadoorie Biobank: 848 cases, 94,887 controls, 6.7% with diabetes; Japan-Kidney-Biobank/ToMMo consortium: 4,046 cases, 9,423 controls, 7.3% with diabetes) and eGFR were reported in Biobank Japan (**Supplementary Table 4, Supplementary Note 2**). The novel GWAS results for eGFR and CKD generated using UK Biobank data were accessed using MRC-IEU OpenGWAS database (<https://gwas.mrcieu.ac.uk/>) (20) and MR-Base (www.mrbase.org) (21).

Statistical analysis

MR is an instrumental variable method that uses genetic variants as instruments to test the causal relationships between an exposure (e.g. BMI) and outcome (e.g. CKD). The causal effect of the exposure and the outcome can be estimated when the three core assumptions are satisfied (**Supplementary Figure 1 and Supplementary Note 3**). For the binary exposures (e.g. T2D), the odds ratios (ORs) were converted (multiplying log(ORs) by log(2) (equal to 0.693) and then exponentiating) in order to represent the OR of outcome per doubling of the odds of susceptibility to the exposure (22)(23).

A set of two-sample MR and sensitivity analyses for testing the underlying assumptions, were conducted using the TwoSampleMR package (21), including Wald ratio (24), inverse variance weighted (IVW) MR (25), MR-Egger (26), MR weighted median (27), MR mode estimator (28), Steiger filtering (29) and heterogeneity test across multiple instruments (30). Information of the bidirectional MR (31) of genetic liability of CKD or eGFR as exposure and risk factors as outcomes, as well as multivariable MR (MVMR) analyses of correlated phenotypes can be found in Supplementary Note 4. A conservative Bonferroni corrected

threshold ($\alpha=1.11\times 10^{-3}$, as 45 risk factors were assessed) was used to account for multiple testing. Power calculations were performed using an online tool (<https://sb452.shinyapps.io/power/>) (32).

Follow-up MR analyses

We conducted extensive follow-up analyses to validate and extend the depth of our main findings. First, a set of analyses was conducted to understand the pathways linking T2D with CKD: 1) we validated the causal effects of the eight glycemic phenotypes on CKD using Steiger filtering (29) and radial MR (33); 2) we considered the influence of genetic liability of type 1 diabetes (T1D) (34) (**Supplementary Table 2**) on CKD; 3) participants with eGFR measurements were stratified into diabetic (N=11,529) and non-diabetic populations (N=118,460) (35) and we conducted MR analyses of T2D and 5 glycemic phenotypes on eGFR in these two sub-populations; 4) diabetic retinopathy was included as a positive control outcome to validate the analytical approach. The instruments for T2D and glycemic phenotypes were used as exposure, while the CKD data from CKDGen, UK Biobank and HUNT as well as the diabetic retinopathy data from UK Biobank SAIGE release (36) were used as outcomes (**Supplementary Table 4**).

Second, to further validate the MR findings of lipids on CKD, the following analyses were conducted: 1) we tested the independent effect of high density lipoprotein cholesterol (HDL-C) and apolipoprotein A-I on CKD using a MVMR model (**Supplementary Note 4**); 2) we estimated the effect of circulating cholesteryl ester transfer protein (CETP) levels (37) on CKD (**Supplementary Table 2**); 3) given that lipoprotein A (Lp[a]) levels for a fixed apo(a) isoform size may vary, we estimated the effect of apo(a) isoform size on CKD (Lp[a] KIV2 repeats and apolipoprotein[a] protein isoform size data from Saleheen et al. (38)) (**Supplementary Table 2**).

Third, to validate the blood pressure and HDL-C MR results in East Asians, we conducted two sensitivity analysis: 1) given the unbalanced distribution between the European and East Asian GWAS resources (39), we need to consider the potential influence of unbalanced number of instruments and the power of the MR results across the two populations. Therefore, we took all SNPs that are associated with systolic blood pressure (SBP; 197 SNPs), diastolic blood pressure (DBP; 235 SNPs) and HDL-C (145 SNPs) in Europeans and checked whether their genetic associations replicated in East Asians GWASs (which the P value thresholds of 0.001 and 0.01 were used as the threshold of replication

separately) and then included those replicated SNPs in the MR analyses of SBP, DBP and HDL-C (**Supplementary Table 5**; 128 SNPs were included using $P < 0.01$, 84 SNPs were included using $P < 0.001$) on CKD in East Asian samples. 2) We extracted genetic instruments of blood pressure phenotypes from a recent Chinese study (40) and conducted a validation of MR findings between the four blood pressure phenotypes (including hypertension, SBP, DBP, pulse pressure [PP]) and CKD in the three CKD outcome studies using East Asian samples.

Finally, for BMI and fasting glucose, a fractional polynomial approach (17)(18) was applied to estimate the non-linear shape of the association between these risk factors and CKD using UK Biobank and HUNT Study (**Supplementary Note 5**).

Evaluation of Mendelian randomization evidence

Previous study suggested that P value threshold should not be the only criteria to define “significance” (41). We therefore evaluated the MR evidence using three criteria: (1) **MR strength**: whether the MR IVW estimate of each risk factor passed the Bonferroni-corrected P value threshold ($P < 1.1 \times 10^{-3}$) in one study and passed the replication threshold ($P < 0.05$) in at least one other study; (2) **Fitness of MR assumptions**: whether the MR estimates of each risk factor showed the same direction of effect across MR sensitivity analyses (e.g. MR IVW, MR-Egger and other methods) and checked the influence of horizontal pleiotropy using MR-Egger intercept term and heterogeneity test (Cochran Q for IVW and Rucker’s Q for MR-Egger). (3) whether the **direction of MR effect** of each risk factor on CKD was consistent across multiple studies. **Figure 1** demonstrated how the MR evidence were determined in Europeans and East Asians separately: “Reliable evidence” refers to risk factors that fulfilled all the three criteria and “Weak evidence” refers to risk factors that do not align with any one of the three criteria (e.g. MR estimates with strong MR evidence but with inconsistent directionality).

RESULTS

Causal effects of risk factors on CKD

The causal effects of the 45 risk factors on CKD in Europeans and 17 risk factors in East Asians are presented in **Figure 2**. Among them, eight risk factors showed reliable evidence, and the remaining 37 showed weak evidence of associations with CKD. Detailed evaluations of the causal evidence in Europeans and East Asians were presented in **Supplementary Table 6A** and **6B** separately.

Risk factors showing reliable MR evidence

Supplementary Figure 2A shows the genetic predictors of eight risk factor are associated with CKD in European ancestries. The IVW odds ratio (95% CIs) for CKD per 1-SD increase in continuous risk factors was 1.78 (1.64 to 1.94) for BMI, 1.24 (1.12 to 1.37) for SBP, 1.13 (1.07 to 1.19) for Lp(a) levels, 0.934 (0.90 to 0.97) for HDL-C and 0.96 (0.94 to 0.98) for Apolipoprotein A-I. The IVW odds ratio (95% CI) per doubling in the odds of genetically liability to binary risk factors was 2.05 (1.59 to 2.64) for hypertension, 1.20 (1.09 to 1.31) for nephrolithiasis and 1.08 (1.05 to 1.12) for T2D. The effects of these eight risk factors on CKD was consistent across UK biobank, CKDGen and HUNT (**Supplementary Table 7A, 8A and 9A**).

In East Asian participants, genetic predicted level of BMI (OR= 1.42, 95%CI=1.20 to 1.69, $P=6.49 \times 10^{-5}$), increased nephrolithiasis risk (OR=1.12, 95%CI=1.04 to 1.19, $P=1.11 \times 10^{-3}$) and increased T2D risk (OR= 1.07, 95%CI=1.03 to 1.10, $P=1.66 \times 10^{-4}$) were associated with increasing risk of CKD (**Supplementary Figure 2B**). The effects of three factors on CKD was consistent across three East Asian studies (except that for BMI and nephrolithiasis effect on CKD was not observed in the China Kadoorie Biobank, which had limited CKD cases) (**Supplementary Table 10, 11 and 12**).

For sensitivity MR analyses, bidirectional MR analysis found a consistent effect of increased genetic liability of CKD on increasing hypertension in European ancestry (**Supplementary Table 13**). The MVMR results of T2D, BMI and hypertension on CKD can be found in **Supplementary Table 14 A, B and C**. MR analysis using eGFR as outcome showed similar results as CKD (**Supplementary Table 7B, 8B, 9B and 10B**).

Risk factors showing weak MR evidence

For the remaining 37 risk factors in European ancestry (**Supplementary Table 7, 8 and 9**) and 12 risk factors in East Asian ancestry (**Supplementary Table 10, 11 and 12**), weak evidence was found to support their effect on CKD. This included some established risk factors such as smoking and serum uric acid. In addition, shorter sleep duration showed evidence of association with CKD in Japan-Kidney-Biobank/ToMMo (**Supplementary Table 11**) and in the UK Biobank (**Supplementary Table 7A**) but lack of replication in other studies.

Follow-up MR analyses of key findings

Effects of glycemic phenotypes and CKD

Although the evidence for an effect of T2D on CKD was reliable, we detected little evidence of the effect of eight glycemic phenotypes (fasting insulin (FI), fasting glucose (FG), 2-hour glucose (2hGlu), fasting proinsulin (FP), haemoglobin A1c (HbA1c), HOMA-B, Insulin-Like Growth Factor Binding Protein 3 and Insulin-Like Growth Factor I) on CKD (**Supplementary Figure 3**) and eGFR (**Supplementary Figure 4**). To further evaluate these findings, we found that 1) similar results were observed after controlling for possible reverse causation of instruments and potential outliers (**Supplementary Table 15**); 2) little evidence was observed that genetic liability to T1D was associated with CKD risk in any of the three outcome studies from European ancestry (**Supplementary Table 16A**), which further supported the weak effect of glucose on CKD; 3) for the MR analysis using stratified eGFR in Europeans, little effect of glycemic phenotypes on eGFR was observed in both diabetic and non-diabetic samples (**Supplementary Table 16B**), which suggested that the weak effect of glucose on CKD could be independent to diabetes; 4) fasting glucose and genetic liability to T2D were associated with diabetic retinopathy (**Supplementary Table 16C**), suggesting that the genetic predictors of glycemic phenotypes used for the main MR analyses were reliable.

Effects of blood lipids and CKD

For the MR findings of lipids, our follow-up analyses showed a few novel observations: 1) we observed different MR evidence for HDL-C on CKD across Europeans and East Asians. In Europeans, good MR strength was observed to support the effects of HDL-C and apolipoprotein A-I on CKD (**Supplementary Table 7, 8 and 9**), while HDL-C showed weaker MR strength in East Asians (**Supplementary Table 10, 11 and 12**). To test the potential influence of power of the HDL-C effect on CKD in East Asians (OR=0.94, 95%CI=0.87 to 1.02), we conducted MR using better powered HDL-C associated SNPs in Europeans as genetic predictors (but the genetic associations were still from East Asian studies) and found reliable MR evidence between the two (OR=0.89, 95%CI=0.83 to 0.96; **Supplementary Table 17A**), which suggested HDL-C may have an effect on CKD in both population; 2) using European data, the multivariable MR model considering both HDL-C and apolipoprotein A-I in the same model showed that the effect of HDL-C on CKD were independent to the apolipoprotein A-I (**Supplementary Table 14D**); 3) following the HDL-C

finding, we found an effect of circulating CETP level on CKD in CKDGen (OR= 1.06, 95%CI=1.01 to 1.11, P= 0.01; **Supplementary Table 18**); 4) we further investigated the potential influence of apolipoprotein(a) size on CKD, but found little evidence for a causal effect. This suggested that the effect of Lp(a) level on CKD was independent of apolipoprotein(a) size (**Supplementary Table 19**);

Effect of blood pressure phenotypes and CKD across populations

As shown in **Figure 3**, blood pressure phenotypes including hypertension, SBP and PP showed reliable evidence of strong causal effects on CKD in the European studies but appeared to show a null causal effect in the East Asian studies (ORs of hypertension on CKD ranging from 1.72 to 2.35 in Europeans but only from 0.99 to 1.07 in East Asians). To validate the East Asian results, we first conducted a MR analysis using the more powerful European SBP and DBP instruments (but East Asian association information), which showed similar results (**Supplementary Table 17B**). Second, we used genetic instruments of SBP, DBP and hypertension from an additional GWAS study in East Asia (40) and still observed similar results (**Supplementary Table 17C**). These analyses provided additional evidence that blood pressure might have a population-specific role in CKD aetiology.

Non-linear effects of BMI and fasting glucose on CKD

We observed a threshold relationship between BMI and CKD. The curved shape of this relationship suggested higher risk in overweight or obese participants, with the BMI threshold at around 25 kg/m² in UK Biobank and around 24~25 kg/m² in HUNT Study (**Figure 4**). Stratified analysis split by sex suggested similar effects of BMI on CKD (**Supplementary Figure 5**), while stratified analysis split by age showed greater harm of increasing BMI in older participants (age≥65) (**Supplementary Figure 6**).

Fasting glucose showed weak evidence for a non-linear relationship with CKD (**Supplementary Figure 7**). This finding was consistent with the stratified analysis results split by sex (**Supplementary Figure 8**) and age (**Supplementary Figure 9**). **Supplementary Table 20** showed the non-linear trend test results of BMI and fasting glucose on CKD, where the analyses suggested little evidence supporting a non-linear relationship between fasting glucose and CKD.

DISCUSSION

In this trans-ethnic MR study, we comprehensively assessed the causal relationships of 45 reported risk factors on CKD and eGFR in more than 1.1 million European and 17 risk

factors in over 250,000 East Asian ancestries. Using a set of MR approaches including five two-sample MR methods and multivariable MR, we found reliable evidence of causal effects of eight cardio-metabolic related risk factors (BMI, SBP, hypertension, T2D, nephrolithiasis, HDL-C, apolipoprotein A-I, and Lp[a]) on CKD. The remaining 37 risk factors, such as smoking and serum uric acid, showed weak evidence of causal effects on CKD with the current available data. These findings agreed with previous MR studies of similar risk factors separately (42)(43)(44). The null finding of the serum uric acid agreed with the recent trial evidence of the effects of serum urate lowering (using Allopurinol) on CKD progression (45)(46). Notably, our extensive MR and follow-up analyses suggested the possibility of glucose-independent pathways linking T2D with CKD. Using non-linear MR, we observed a threshold relation between BMI and CKD risk, with the CKD risk increased at BMI above 25 kg/m².

The causal patterns of 17 risk factors were compared across the two ancestries, and we observed consistent effects of T2D, BMI and nephrolithiasis on CKD in both Europeans and East Asians. In contrast, distinguishable causal patterns were observed for hypertension against CKD across ancestries, where the causal estimate was strong in Europeans but towards null in East Asians. Our trans-ethnic comparison implies that careful assessments are needed before implementing interventions using CKD risk factors that were identified using evidence from a different population.

For the prioritised risk factors, hypertension is one of the most common risk factors for CKD progression (51). A recent bi-directional MR study in Europeans supported the causal effects of higher kidney function on lower blood pressure using well-designed eGFR instruments controlled by blood urea nitrogen. But the study suggested inconclusive evidence of an effect of blood pressure on eGFR (52). In our MR analysis, we found evidence of positive bidirectional causal effects between hypertension and CKD in Europeans, in line with clinical and experimental studies. The inconsistent MR findings across these studies may be due to 1) the blood pressure instruments Yu et al used were adjusted for BMI in the additive model, but the genetic associations of eGFR and CKD were not controlled for BMI. Given the causal role of BMI on both CKD and hypertension, only controlling for BMI in the exposure data may create unintended bias to the MR estimates, as described previously (53); 2) the CKD cases we used here were clinically diagnosed, which may bring additional statistical power and therefore provided more reliable evidence for the suggestive effect of blood pressure on CKD reported by Yu et al. Furthermore, the different MR evidence across ancestries we observed combined with previous literature evidence opens up the possibility

that hypertension could play different causal roles on CKD across ancestries. In literature, the ethnic disparities for effects of hypertension on CKD has been reported (47)(48). For example, Chinese hold lower risk of CKD when exposed to hypertension compared with Europeans (47). In 2019, hypertensive nephropathy accounted for 27% of the overall CKD cases in U.S but only accounted for 20.8% in East Asian (49)(50). Correctively, whether blood pressure showed a consistent causal effect on CKD across ancestries is still not directly clear. Well-powered trans-ethnic studies are needed to validate our findings.

For two other emerging risk factors, BMI and nephrolithiasis, our MR analyses suggested substantial causal effects on CKD. Previous observational studies suggested a positive association for BMI on CKD (54)(55) and end stage renal disease (ESRD) onset (56) (57)(58) and the effect of weight loss on slowing kidney function decline (59). Using linear and non-linear MR approaches, we observed a threshold causal relationship between BMI and CKD and quantified the optimal maximum (25 kg/m^2) for body mass index. These findings provide additional confidence of the potential success of five ongoing trials registered in clincialtrials.gov. In addition, nephrolithiasis is a common serious problem around the world (60)(61)(62). Increasing evidence suggests that having kidney stones is a risk factor for CKD (63). For example, kidney stone formers tend to have lower eGFR (64). Previous cohort study suggested that even a single kidney stone episode was associated with an increase in the likelihood of adverse renal outcomes (65). A recent genetic study suggested that eGFR has an inverse relationship with kidney stone formation (66). However, the causal relationship between nephrolithiasis and CKD has not been investigated thoroughly. Our MR supported the causal effect of nephrolithiasis on increased risk of CKD, which were obtained by genetic predictors with good instrument strength. This is of particular importance as obstructive nephropathy was the third leading cause of CKD in the general Chinese population (15.6%) (50). Existing literature suggests that recurrent obstructive episodes may activate the fibrogenic cascade in renal cells and be responsible for the loss of renal function (67). Our study supports this literature and prioritises prevention of kidney stones as a sensible approach for CKD prevention.

Notably, diabetic kidney disease is considered the most common type of CKD worldwide(68). A previous MR study of T2D on CKD in Chinese suggested a strong causal link between the two (69), which aligned with our MR finding in East Asians and Europeans. However, despite the reliable evidence for a causal effect of T2D on CKD, the linear and non-linear MR results suggested that the causal effects of fasting glucose and insulin levels on CKD were close to null. It has been observed that with increasing use of glucose-lowering

medications, the prevalence of CKD in diabetics was not reduced as expected from 1988 to 2008 (70). Meta-analysis of RCTs of intensive glucose control showed little effect on reducing the risk of ESRD during the years of follow-up (71). These findings together with our MR results suggest that non-glucose pathways could play a role to link diabetes with CKD (70)(71). Consistently, the beneficial effects of antidiabetic SGLT2 inhibitors on renal outcomes were suggested to be mediated by glucose-independent pathways (72). One potential limitation was that the glucose GWAS used in this study was conducted in a general population sample (fasting glucose level lower than 7 mmol/L), which most of the existing MR studies using these data assume the glucose change in general population shows similar effects in diabetes patients (with fasting glucose level above 7 mmol/L), which may not always be the case. Although our stratified MR analysis showed similar little causal effects using eGFR in diabetes patients and non-diabetes patients, we believe better genetic instruments from diabetic population samples and well-designed clinical trials are needed to evaluate the effect of glucose-dependent and -independent mechanisms on CKD prevention in diabetic patients.

Hyperlipidaemia and dyslipidaemia have been widely documented to be associated with kidney disease (73)(74). But the causal effects of lipid components on CKD are still unclear. A few recent MR studies suggested a protective effect of higher HDL-C on CKD in Europeans (75) and a nominal effect of Lp(a) lowering on reducing CKD risk (76). In this study, we strengthened the evidence of the Lp(a) finding and validated the HDL-C findings in completely independent samples. Our study also moved beyond the existing studies, by 1) establishing novel causal evidence of apolipoprotein A-I on CKD in Europeans; 2) the MVMR implies that non- apolipoprotein A-I property of HDL-C may have an effect on CKD; 3) providing a natural extension of the HDL-C finding (77) and a recent trial of CETP inhibitor on cardiovascular disease (78), by estimating the causal effect of circulating CETP level on CKD and demonstrating a suggested effect between the two in European ancestry; 4) demonstrating that the causal effect of Lp(a) level on CKD was independent of apolipoprotein(a) size. A previous study suggested that HDL-C may protect from kidney diseases through altering cholesterol efflux in the pathogenesis of kidney disease (79). The causal effect of HDL-C and the effect of CETP level on CKD raises the possibility of increasing HDL-C concentration as an intervention strategy for CKD prevention. In addition, our MR finding of the effects of Lp(a) level also aligned with previous observational evidence, which suggested that Lp(a) level was inversely correlated with kidney function (80)(81) and positively correlated with lower eGFR (82). This also implies the possibility of

further investigation of Lp(a) reduction therapies, such as IONISAPO(a) on reducing CKD risk (83). Overall, our findings highlight the potential of multiple lipid management strategies in reducing CKD risk.

Strengths and Limitations

Our study has some strengths compared to previous studies. We used clinically diagnosed CKD instead of $\text{eGFR} < 60\text{ml/min/1.73m}^2$ in European (UK Biobank and HUNT) and East Asian studies (China Kadoorie Biobank and Japan-Kidney-Biobank/ToMMo), which the later definition excluded CKD cases with abnormal urine protein level but with normal eGFR. Therefore, this increased the robustness of the CKD definition. By comprehensively validating the MR findings in the six CKD studies, we greatly enhanced the reliability of the causal atlas of risk factors on CKD.

Our study also has some potential limitations. In the MR analysis, when instrumenting for a binary exposure (e.g. coronary artery disease), we are not instrumenting the exposure itself but the predisposition to the exposure (84), so our results speak to whether removal of the predisposition to the binary exposure (rather than treatment of the exposure) would reduce CKD risk. In addition, due to unbalanced representativeness of GWAS samples across Europeans and East Asians, we can only test causal effects for 17 of the 45 risk factors in East Asians. Due to the same reason, the number of instruments for each risk factors of the analyses were different across the two ancestries. For risk factors showed different MR evidence across ancestries, we further evaluated these findings using more powerful genetic predictors and using additional data sources to minimise the influence of unbalanced GWAS samples and number of instruments across ancestries. Other limitations of the study were listed in **Supplementary Note 6**.

Conclusions

By evaluating causal evidence of 45 risk factors on CKD in over 1.1 million individuals in European ancestry and 17 factors in over 250,000 East Asian ancestry, we built up a causal atlas of CKD risk factors and showed that eight risk factors are reliably causal for CKD. All these factors are predominantly related to cardio-metabolic health, which supports the shared causal link between cardio-metabolic health and kidney function. Our findings may have important clinical implications in terms of informing primary prevention in “at risk” individuals with normal renal function, which may help reduce the burden of CKD globally.

Author contribution

J.Z., Y.M.Z. and H.R. performed the linear Mendelian randomization analysis; J.Z. and H.R. performed the non-linear Mendelian randomization with supports from S.F., Q.Y. and S.B.; J.Z., H.R. and L.F.T. performed the GWAS in the UK Biobank and HUNT study; Y.S., M.Y. and N.K. conducted the GWAS in each cohort and performed the GWAS meta-analysis in the Japan-Kidney-Biobank/ToMMo study; M.A., M.K., K.M., Y.K., and Y.O. performed the GWAS in Biobank Japan; C.Q.Y. and J.C.L. conducted the GWAS in the China Kadoorie Biobank; J.Z., Y.M.Z. and B.E. performed the systematic review of CKD risk factors; R.E.W. performed the sensitivity analysis of smoking on CKD; P.C.H., A.H., J.R., B.M.B., L.F.T., K.H., S.H. A.K., C.P., M.W., and B.O.A. provided key data and supported the MR analysis; M.C.B., Y.C., R.C., S.H., N.F., A.P.M., G.D.S., S.B., C.Q.Y. and B.O.A. reviewed the paper and provided key comments; J.Z., Y.M.Z., H.R., V.W., Y.S., Y.L., X.M., Y.F.B., G.N., G.D.S., S.B., B.O.A., H.Z. and T.R.G. wrote the manuscript; J.Z., Y.M.Z., H.Z. and T.R.G. conceived and designed the study and oversaw all analyses.

Acknowledgements

JZ is funded by a Vice-Chancellor Fellowship from the University of Bristol. This research was also funded by the UK Medical Research Council Integrative Epidemiology Unit (MC_UU_00011/1, MC_UU_00011/4 and MC_UU_00011/7). This study was funded/supported by the NIHR Biomedical Research Centre at University Hospitals Bristol NHS Foundation Trust and the University of Bristol (GDS, TRG and REW). This study received funding from the UK Medical Research Council (MR/R013942/1). The views expressed in this publication are those of the author(s) and not necessarily those of the NHS, the National Institute for Health Research or the Department of Health and Social Care. YMZ is supported by the National Natural Science Foundation of China (81800636) and Beijing Natural Science Foundation (7184253). HZ is supported by the Training Program of the Major Research Plan of the National Natural Science Foundation of China (91642120), the Grant from the Science and Technology Project of Beijing, China (D18110700010000) and the University of Michigan Health System–Peking University Health Science Center Joint Institute for Translational and Clinical Research (BMU2017JI007). NF is supported by the National Institutes of Health awards R01-MD012765, R01-DK117445 and R21-HL140385. RC is funded by a Wellcome Trust GW4 Clinical Academic Training Fellowship (WT 212557/Z/18/Z). The Nord-Trøndelag Health Study (The HUNT Study) is a collaboration

between HUNT Research Centre (Faculty of Medicine and Health Sciences, NTNU, Norwegian University of Science and Technology), Nord-Trøndelag County Council, Central Norway Regional Health Authority, and the Norwegian Institute of Public Health. MCB is supported by the UK Medical Research Council (MRC) Skills Development Fellowship (MR/P014054/1). SF is supported by a Wellcome Trust PhD studentship (WT108902/Z/15/Z). QY is funded by a China Scholarship Council PhD scholarship (CSC201808060273). YC was supported by the National Key R&D Program of China (2016YFC0900500, 2016YFC0900501, 2016YFC0900504). The China Kadoorie Biobank baseline survey and the first re-survey were supported by a grant from the Kadoorie Charitable Foundation in Hong Kong. The long-term follow-up is supported by grants from the UK Wellcome Trust (202922/Z/16/Z, 088158/Z/09/Z, 104085/Z/14/Z). Japan-Kidney-Biobank was supported by AMED under Grant Number 20km0405210. PCH is supported by Cancer Research UK [grant number: C18281/A19169]. AK was supported by DFG KO 3598/5-1. N.F. is supported by NIH awards R01-DK117445, R01-MD012765, R21-HL140385.

Data availability

The genome-wide association analysis results of CKD and eGFR in the UK Biobank can be accessed via MR-Base (www.mrbase.org) and the IEU OpenGWAS database (gwas.mrcieu.ac.uk).

References

1. Thomas R, Kanso A, Sedor JR. Chronic kidney disease and its complications. *Prim Care*. 2008 Jun;35(2):329–44.
2. Webster AC, Nagler EV, Morton RL, Masson P. Chronic Kidney Disease. *Lancet*. 2017 Mar 25;389(10075):1238–52.
3. Dalrymple LS, Katz R, Kestenbaum B, Shlipak MG, Sarnak MJ, Stehman-Breen C, et al. Chronic kidney disease and the risk of end-stage renal disease versus death. *J Gen Intern Med*. 2011 Apr;26(4):379–85.
4. GBD Chronic Kidney Disease Collaboration. Global, regional, and national burden of chronic kidney disease, 1990-2017: a systematic analysis for the Global Burden of Disease Study 2017. *Lancet*. 2020 Feb 29;395(10225):709–33.
5. Carney EF. The impact of chronic kidney disease on global health. *Nat Rev Nephrol*. 2020 May;16(5):251.
6. Davies NM, Holmes MV, Davey Smith G. Reading Mendelian randomisation studies: a guide, glossary, and checklist for clinicians. *BMJ*. 2018 Jul 12;362:k601.
7. Davey Smith G, Ebrahim S. ‘Mendelian randomization’: can genetic epidemiology contribute to understanding environmental determinants of disease? *Int J Epidemiol*. 2003;32(1):1–22.
8. Zheng J, Baird D, Borges M-C, Bowden J, Hemani G, Haycock P, et al. Recent Developments in Mendelian Randomization Studies. *Curr Epidemiol Rep*. 2017 Nov 22;4(4):330–45.
9. Elsworth B, Dawe K, Vincent EE, Langdon R, Lynch BM, Martin RM, et al. MELODI: Mining Enriched Literature Objects to Derive Intermediates. *Int J Epidemiol*. 2018 Jan 12; Available from: <http://dx.doi.org/10.1093/ije/dyx251>.
10. Elsworth B, Gaunt TR. MELODI Presto: A fast and agile tool to explore semantic triples derived from biomedical literature. *Bioinformatics*. 2020 Aug 18; Available from: <http://dx.doi.org/10.1093/bioinformatics/btaa726>.
11. Wuttke M, Li Y, Li M, Sieber KB, Feitosa MF, Gorski M, et al. A catalog of genetic loci associated with kidney function from analyses of a million individuals. *Nat Genet*. 2019 Jun;51(6):957–72.
12. Sudlow C, Gallacher J, Allen N, Beral V, Burton P, Danesh J, et al. UK biobank: an open access resource for identifying the causes of a wide range of complex diseases of middle and old age. *PLoS Med*. 2015 Mar;12(3):e1001779.
13. Holmen J, Midthjell K, Krüger Ø, Langhammer A, Holmen TL, Bratberg GH, et al. The Nord-Trøndelag Health Study 1995-97 (HUNT 2). *Norsk epidemiologi*. 2003 Sep 24;13(1). Available from: <https://www.ntnu.no/ojs/index.php/norepid/article/view/305>

14. Nagai A, Hirata M, Kamatani Y, Muto K, Matsuda K, Kiyohara Y, et al. Overview of the BioBank Japan Project: Study design and profile. *J Epidemiol*. 2017 Mar;27(3S):S2–8.
15. Chen Z, Chen J, Collins R, Guo Y, Peto R, Wu F, et al. China Kadoorie Biobank of 0.5 million people: survey methods, baseline characteristics and long-term follow-up. *Int J Epidemiol*. 2011 Dec;40(6):1652–66.
16. Sun Y-Q, Burgess S, Staley JR, Wood AM, Bell S, Kaptoge SK, et al. Body mass index and all cause mortality in HUNT and UK Biobank studies: linear and non-linear mendelian randomisation analyses. *BMJ*. 2019 Mar 26;364:11042.
17. Burgess S, Davies NM, Thompson SG, EPIC-InterAct Consortium. Instrumental variable analysis with a nonlinear exposure-outcome relationship. *Epidemiology*. 2014 Nov;25(6):877–85.
18. Staley JR, Burgess S. Semiparametric methods for estimation of a nonlinear exposure-outcome relationship using instrumental variables with application to Mendelian randomization. *Genet Epidemiol*. 2017 May;41(4):341–52.
19. Levey AS, Stevens LA, Schmid CH, Zhang YL, Castro AF 3rd, Feldman HI, et al. A new equation to estimate glomerular filtration rate. *Ann Intern Med*. 2009 May 5;150(9):604–12.
20. Elsworth B, Lyon M, Alexander T, Liu Y, Matthews P, Hallett J, et al. The MRC IEU OpenGWAS data infrastructure. 2020 Aug 16. Available from: <https://www.biorxiv.org/content/10.1101/2020.08.10.244293v1>
21. Hemani G, Zheng J, Elsworth B, Wade KH, Haberland V, Baird D, et al. The MR-Base platform supports systematic causal inference across the human phenome. *Elife*. 2018 May 30;7. Available from: <http://dx.doi.org/10.7554/eLife.34408>
22. Gage SH, Jones HJ, Burgess S, Bowden J, Davey Smith G, Zammit S, et al. Assessing causality in associations between cannabis use and schizophrenia risk: a two-sample Mendelian randomization study. *Psychol Med*. 2017 Apr;47(5):971–80.
23. Sekula P, Del Greco M F, Pattaro C, Köttgen A. Mendelian Randomization as an Approach to Assess Causality Using Observational Data. *J Am Soc Nephrol*. 2016 Nov;27(11):3253–65.
24. Lawlor DA, Harbord RM, Sterne JAC, Timpson N, Davey Smith G. Mendelian randomization: using genes as instruments for making causal inferences in epidemiology. *Stat Med*. 2008 Apr 15;27(8):1133–63.
25. Burgess S, Butterworth A, Thompson SG. Mendelian randomization analysis with multiple genetic variants using summarized data. *Genet Epidemiol*. 2013 Nov;37(7):658–65.
26. Bowden J, Davey Smith G, Burgess S. Mendelian randomization with invalid instruments: effect estimation and bias detection through Egger regression. *Int J Epidemiol*. 2015 Apr;44(2):512–25.

27. Bowden J, Del Greco M F, Minelli C, Davey Smith G, Sheehan NA, Thompson JR. Assessing the suitability of summary data for two-sample Mendelian randomization analyses using MR-Egger regression: the role of the I^2 statistic. *Int J Epidemiol*. 2016;45(6):1961–74.
28. Hartwig FP, Davey Smith G, Bowden J. Robust inference in summary data Mendelian randomization via the zero modal pleiotropy assumption. *Int J Epidemiol*. 2017 Jul 12; Available from: <https://academic.oup.com/ije/article-abstract/3957932/Robust-inference-in-summary-data-Mendelian>
29. Hemani G, Tilling K, Davey Smith G. Orienting the causal relationship between imprecisely measured traits using GWAS summary data. *PLoS Genet*. 2017 Nov;13(11):e1007081.
30. Bowden J, Hemani G, Davey Smith G. Detecting individual and global horizontal pleiotropy in Mendelian randomization: a job for the humble heterogeneity statistic? *Am J Epidemiol*. 2018 Sep 5; Available from: <http://dx.doi.org/10.1093/aje/kwy185>
31. Timpson NJ, Nordestgaard BG, Harbord RM, Zacho J, Frayling TM, Tybjaerg-Hansen A, et al. C-reactive protein levels and body mass index: elucidating direction of causation through reciprocal Mendelian randomization. *Int J Obes*. 2011 Feb;35(2):300–8.
32. Brion M-JA, Shakhbazov K, Visscher PM. Calculating statistical power in Mendelian randomization studies. *Int J Epidemiol*. 2013 Oct;42(5):1497–501.
33. Bowden J, Spiller W, Del Greco M F, Sheehan N, Thompson J, Minelli C, et al. Improving the visualization, interpretation and analysis of two-sample summary data Mendelian randomization via the Radial plot and Radial regression. *Int J Epidemiol*. 2018 Aug 1;47(4):1264–78.
34. Onengut-Gumuscu S, Chen W-M, Burren O, Cooper NJ, Quinlan AR, Mychaleckyj JC, et al. Fine mapping of type 1 diabetes susceptibility loci and evidence for colocalization of causal variants with lymphoid gene enhancers. *Nat Genet*. 2015 Apr;47(4):381–6.
35. Pattaro C, Teumer A, Gorski M, Chu AY, Li M, Mijatovic V, et al. Genetic associations at 53 loci highlight cell types and biological pathways relevant for kidney function. *Nat Commun*. 2016 Jan 21;7:10023.
36. Zhou W, Nielsen JB, Fritsche LG, Dey R, Gabrielsen ME, Wolford BN, et al. Efficiently controlling for case-control imbalance and sample relatedness in large-scale genetic association studies. *Nat Genet*. 2018 Sep;50(9):1335–41.
37. Blauw LL, Li-Gao R, Noordam R, de Mutsert R, Trompet S, Berbee JFP, et al. CETP (Cholesteryl Ester Transfer Protein) Concentration: A Genome-Wide Association Study Followed by Mendelian Randomization on Coronary Artery Disease. *Circ Genom Precis Med*. 2018 May;11(5):e002034.
38. Saleheen D, Haycock PC, Zhao W, Rasheed A, Taleb A, Imran A, et al. Apolipoprotein(a) isoform size, lipoprotein(a) concentration, and coronary artery disease: a mendelian randomisation analysis. *Lancet Diabetes Endocrinol*. 2017 Jul;5(7):524–33.

39. Mills MC, Rahal C. A scientometric review of genome-wide association studies. *Commun Biol*. 2019 Jan 7;2:9.
40. Lu X, Wang L, Lin X, Huang J, Charles Gu C, He M, et al. Genome-wide association study in Chinese identifies novel loci for blood pressure and hypertension. *Hum Mol Genet*. 2015 Feb 1;24(3):865–74.
41. Sterne JA, Davey Smith G. Sifting the evidence-what's wrong with significance tests? *BMJ*. 2001 Jan 27;322(7280):226–31.
42. Li X, Meng X, Timofeeva M, Tzoulaki I, Tsilidis KK, Ioannidis JPA, et al. Serum uric acid levels and multiple health outcomes: umbrella review of evidence from observational studies, randomised controlled trials, and Mendelian randomisation studies. *BMJ*. 2017 Jun 7;357:j2376.
43. Chen C, Xia F, Chen Y, Zhang K, Cheng J, Li Q, et al. Association Between Thyroid-Stimulating Hormone and Renal Function: a Mendelian Randomization Study. *Kidney Blood Press Res*. 2018 Jul 17;43(4):1121–30.
44. Liu H-M, Hu Q, Zhang Q, Su G-Y, Xiao H-M, Li B-Y, et al. Causal Effects of Genetically Predicted Cardiovascular Risk Factors on Chronic Kidney Disease: A Two-Sample Mendelian Randomization Study. *Front Genet*. 2019 May 3;10:415.
45. Badve SV, Pascoe EM, Tikun A, Boudville N, Brown FG, Cass A, et al. Effects of Allopurinol on the Progression of Chronic Kidney Disease. *N Engl J Med*. 2020 Jun 25;382(26):2504–13.
46. Doria A, Galecki AT, Spino C, Pop-Busui R, Cherney DZ, Lingvay I, et al. Serum Urate Lowering with Allopurinol and Kidney Function in Type 1 Diabetes. *N Engl J Med*. 2020 Jun 25;382(26):2493–503.
47. Xu R, Zhang L, Zhang P, Wang F, Zuo L, Wang H. Comparison of the prevalence of chronic kidney disease among different ethnicities: Beijing CKD survey and American NHANES. *Nephrol Dial Transplant*. 2009 Apr;24(4):1220–6.
48. Hull S, Dreyer G, Badrick E, Chesser A, Yaqoob MM. The relationship of ethnicity to the prevalence and management of hypertension and associated chronic kidney disease. *BMC Nephrol*. 2011 Sep 6;12:41.
49. Saran R, Robinson B, Abbott KC, Bragg-Gresham J, Chen X, Gipson D, et al. US Renal Data System 2019 Annual Data Report: Epidemiology of Kidney Disease in the United States. *Am J Kidney Dis*. 2020 Jan;75(1 Suppl 1):A6–7.
50. Zhang L, Zhao M-H, Zuo L, Wang Y, Yu F, Zhang H, et al. China Kidney Disease Network (CK-NET) 2015 Annual Data Report. *Kidney Int Suppl*. 2019 Mar;9(1):e1–81.
51. KDIGO Board Members. KDIGO Clinical Practice Guideline for the Management of Blood Pressure in Chronic Kidney Disease. *Kidney International*. 2012;(2):337–414.
52. Yu Z, Coresh J, Qi G, Grams M, Boerwinkle E, Snieder H, et al. A bidirectional Mendelian randomization study supports causal effects of kidney function on blood

- pressure. *Kidney Int.* 2020 May 23; Available from: <http://dx.doi.org/10.1016/j.kint.2020.04.044>
53. Hartwig FP, Tilling K, Smith GD, Lawlor DA, Borges MC. Bias in two-sample Mendelian randomization by using covariable-adjusted summary associations. 2019 Jun 5. Available from: <https://www.biorxiv.org/content/10.1101/816363v1>
 54. Garofalo C, Borrelli S, Minutolo R, Chiodini P, De Nicola L, Conte G. A systematic review and meta-analysis suggests obesity predicts onset of chronic kidney disease in the general population. *Kidney Int.* 2017 May;91(5):1224–35.
 55. Stefansson VTN, Schei J, Solbu MD, Jenssen TG, Melsom T, Eriksen BO. Metabolic syndrome but not obesity measures are risk factors for accelerated age-related glomerular filtration rate decline in the general population. *Kidney Int.* 2018 May;93(5):1183–90.
 56. Iseki K, Ikemiya Y, Kinjo K, Inoue T, Iseki C, Takishita S. Body mass index and the risk of development of end-stage renal disease in a screened cohort. *Kidney Int.* 2004 May;65(5):1870–6.
 57. Hsu C-Y, McCulloch CE, Iribarren C, Darbinian J, Go AS. Body mass index and risk for end-stage renal disease. *Ann Intern Med.* 2006 Jan 3;144(1):21–8.
 58. O'Brien R, Johnson E, Haneuse S, Coleman KJ, O'Connor PJ, Fisher DP, et al. Microvascular Outcomes in Patients With Diabetes After Bariatric Surgery Versus Usual Care: A Matched Cohort Study. *Ann Intern Med.* 2018 Sep 4;169(5):300–10.
 59. Navaneethan SD, Yehnert H, Moustarah F, Schreiber MJ, Schauer PR, Beddhu S. Weight loss interventions in chronic kidney disease: a systematic review and meta-analysis. *Clin J Am Soc Nephrol.* 2009 Oct;4(10):1565–74.
 60. Moe OW. Kidney stones: pathophysiology and medical management. *Lancet.* 2006 Jan 28;367(9507):333–44.
 61. Scales CD Jr, Smith AC, Hanley JM, Saigal CS, Urologic Diseases in America Project. Prevalence of kidney stones in the United States. *Eur Urol.* 2012 Jul;62(1):160–5.
 62. Ward JB, Feinstein L, Pierce C, Lim J, Abbott KC, Bavendam T, et al. Pediatric Urinary Stone Disease in the United States: The Urologic Diseases in America Project. *Urology.* 2019 Jul;129:180–7.
 63. Uribarri J. Chronic kidney disease and kidney stones. *Curr Opin Nephrol Hypertens.* 2020 Mar;29(2):237–42.
 64. Gillen DL, Worcester EM, Coe FL. Decreased renal function among adults with a history of nephrolithiasis: a study of NHANES III. *Kidney Int.* 2005 Feb;67(2):685–90.
 65. Alexander RT, Hemmelgarn BR, Wiebe N, Bello A, Morgan C, Samuel S, et al. Kidney stones and kidney function loss: a cohort study. *BMJ.* 2012 Aug 29;345:e5287.

66. Morris AP, Le TH, Wu H, Akbarov A, van der Most PJ, Hemani G, et al. Trans-ethnic kidney function association study reveals putative causal genes and effects on kidney-specific disease aetiologies. *Nat Commun*. 2019 Jan 3;10(1):29.
67. Hammes MS, Lieske JC, Pawar S, Spargo BH, Toback FG. Calcium oxalate monohydrate crystals stimulate gene expression in renal epithelial cells. *Kidney Int*. 1995 Aug;48(2):501–9.
68. Jha V, Garcia-Garcia G, Iseki K, Li Z, Naicker S, Plattner B, et al. Chronic kidney disease: global dimension and perspectives. *Lancet*. 2013 Jul 20;382(9888):260–72.
69. Xu M, Bi Y, Huang Y, Xie L, Hao M, Zhao Z, et al. Type 2 Diabetes, Diabetes Genetic Score and Risk of Decreased Renal Function and Albuminuria: A Mendelian Randomization Study. *EBioMedicine*. 2016 Apr;6:162–70.
70. de Boer IH, Rue TC, Hall YN, Heagerty PJ, Weiss NS, Himmelfarb J. Temporal trends in the prevalence of diabetic kidney disease in the United States. *JAMA*. 2011 Jun 22;305(24):2532–9.
71. Coca SG, Ismail-Beigi F, Haq N, Krumholz HM, Parikh CR. Role of intensive glucose control in development of renal end points in type 2 diabetes mellitus: systematic review and meta-analysis intensive glucose control in type 2 diabetes. *Arch Intern Med*. 2012 May 28;172(10):761–9.
72. Perkovic V, Jardine MJ, Neal B, Bompoint S, Heerspink HJL, Charytan DM, et al. Canagliflozin and Renal Outcomes in Type 2 Diabetes and Nephropathy. *N Engl J Med*. 2019 Jun 13;380(24):2295–306.
73. Florens N, Calzada C, Lyasko E, Juillard L, Soulage CO. Modified Lipids and Lipoproteins in Chronic Kidney Disease: A New Class of Uremic Toxins. *Toxins*. 2016 Dec 16;8(12). Available from: <http://dx.doi.org/10.3390/toxins8120376>
74. Visconti L, Benvenga S, Lacquaniti A, Cernaro V, Bruzzese A, Conti G, et al. Lipid disorders in patients with renal failure: Role in cardiovascular events and progression of chronic kidney disease. *J Clin Transl Endocrinol*. 2016 Dec;6:8–14.
75. Lanktree MB, Thériault S, Walsh M, Paré G. HDL Cholesterol, LDL Cholesterol, and Triglycerides as Risk Factors for CKD: A Mendelian Randomization Study. *Am J Kidney Dis*. 2018 Feb;71(2):166–72.
76. Emdin CA, Khera AV, Natarajan P, Klarin D, Won H-H, Peloso GM, et al. Phenotypic Characterization of Genetically Lowered Human Lipoprotein(a) Levels. *J Am Coll Cardiol*. 2016 Dec 27;68(25):2761–72.
77. Holmes MV, Davey Smith G. Challenges in Interpreting Multivariable Mendelian Randomization: Might “Good Cholesterol” Be Good After All? *Am J Kidney Dis*. 2018 Feb 1;71(2):149–53.
78. HPS3/TIMI55–REVEAL Collaborative Group, Bowman L, Hopewell JC, Chen F, Wallendszus K, Stevens W, et al. Effects of Anacetrapib in Patients with Atherosclerotic Vascular Disease. *N Engl J Med*. 2017 Sep 28;377(13):1217–27.

79. Vaziri ND, Navab M, Fogelman AM. HDL metabolism and activity in chronic kidney disease. *Nat Rev Nephrol*. 2010 May;6(5):287–96.
80. Lin J, Reilly MP, Terembula K, Wilson FP. Plasma lipoprotein(a) levels are associated with mild renal impairment in type 2 diabetics independent of albuminuria. *PLoS One*. 2014 Dec 9;9(12):e114397.
81. Kronenberg F, Kuen E, Ritz E, Junker R, König P, Kraatz G, et al. Lipoprotein(a) serum concentrations and apolipoprotein(a) phenotypes in mild and moderate renal failure. *J Am Soc Nephrol*. 2000 Jan;11(1):105–15.
82. Kovesdy CP, Astor BC, Longenecker JC, Coresh J. Association of kidney function with serum lipoprotein(a) level: the third National Health and Nutrition Examination Survey (1991-1994). *Am J Kidney Dis*. 2002 Nov;40(5):899–908.
83. Tsimikas S, Viney NJ, Hughes SG, Singleton W, Graham MJ, Baker BF, et al. Antisense therapy targeting apolipoprotein(a): a randomised, double-blind, placebo-controlled phase 1 study. *Lancet*. 2015 Oct 10;386(10002):1472–83.
84. Munafò MR, Tilling K, Taylor AE, Evans DM, Davey Smith G. Collider scope: when selection bias can substantially influence observed associations. *Int J Epidemiol*. 2017 Sep 27; Available from: <https://academic.oup.com/ije/article/4259077>

Figure legends

Figure 1. Study design of the trans-ethnic Mendelian randomization study of chronic kidney disease.

Figure 2. Forest plot for causal effects of the 45 risk factors on CKD in European and Eastern Asians. A) causal estimates using Europeans data; B) causal estimates using Eastern Asians data. For binary exposures, the effect reported on the X-axis is the OR of CKD per doubling in the odds of the exposure. For continuous exposure, the effects on the X-axis is the OR of CKD per 1 SD change in the exposure.

Figure 3. Forest plot for causal effects of four blood pressure phenotypes on CKD risk. The subplots represent MR results of different blood pressure phenotypes.

Figure 4. Non-linear Mendelian randomization of BMI on CKD risk. The dose-response curve between body mass index and CKD risk for (A) UK Biobank and (B) HUNT Study. Gradient at each point of the curve is the localized average causal effect. Shaded areas represent 95% confidence intervals.

Figure 1.

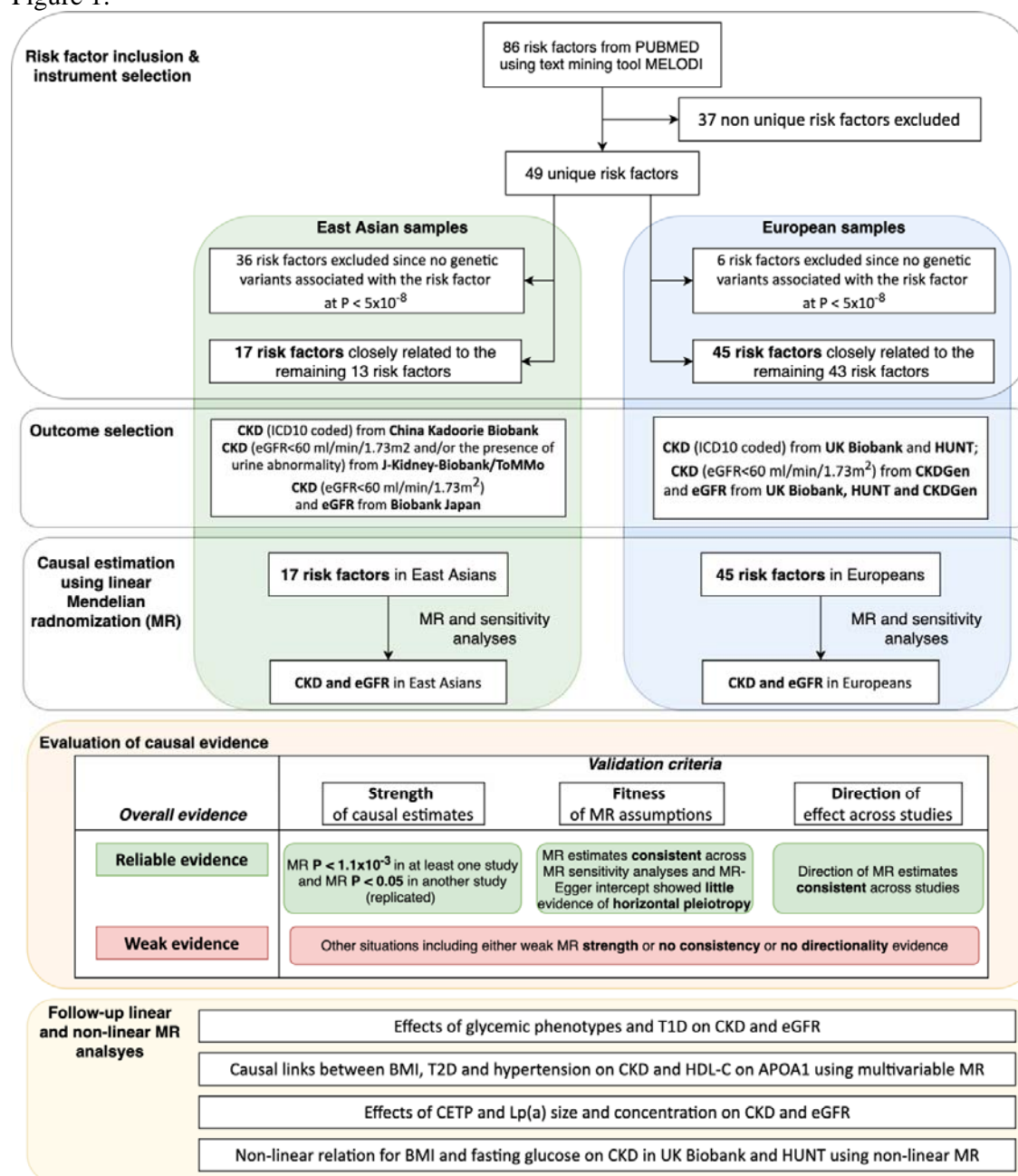


Figure 2.

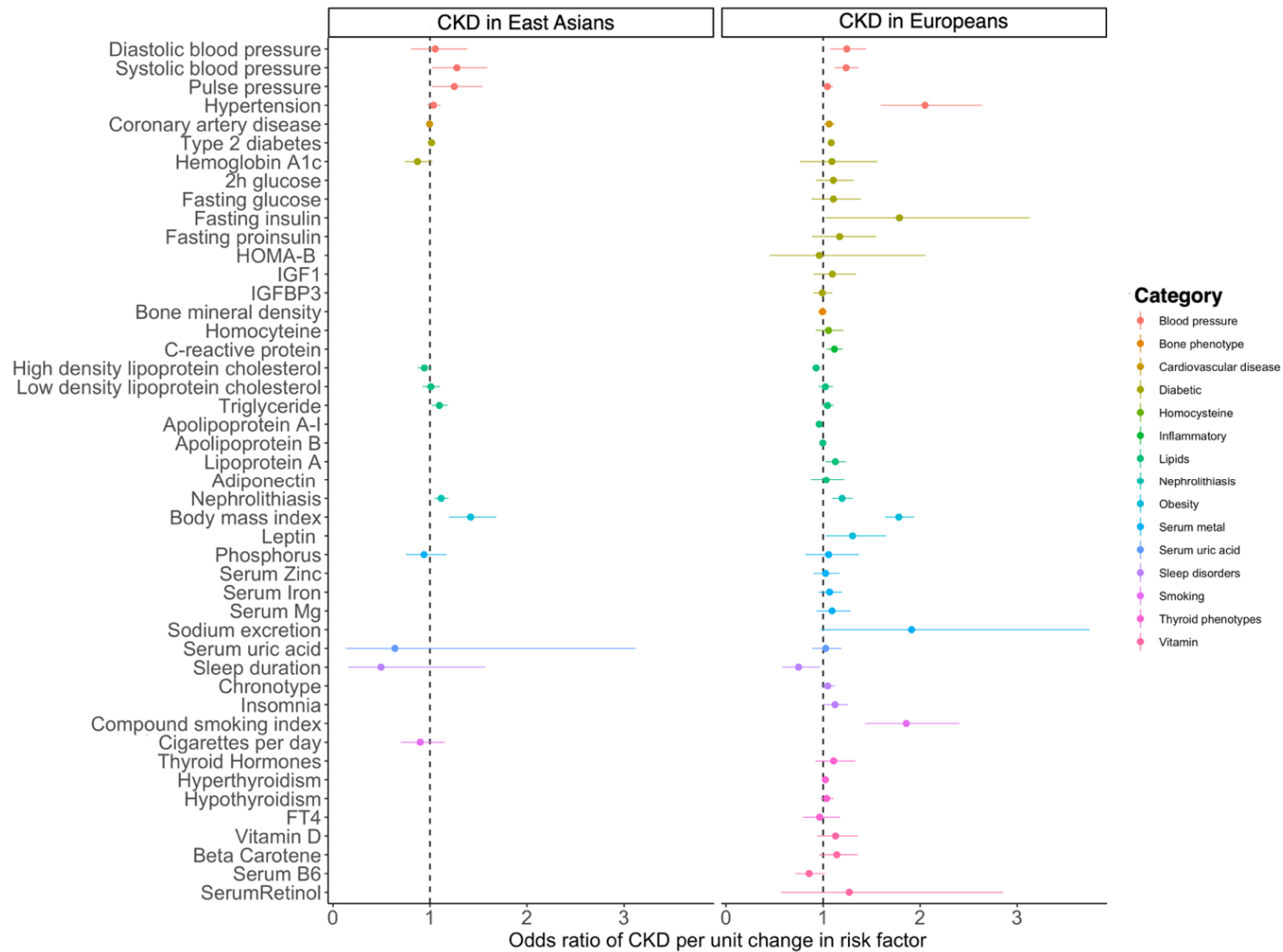


Figure 3.

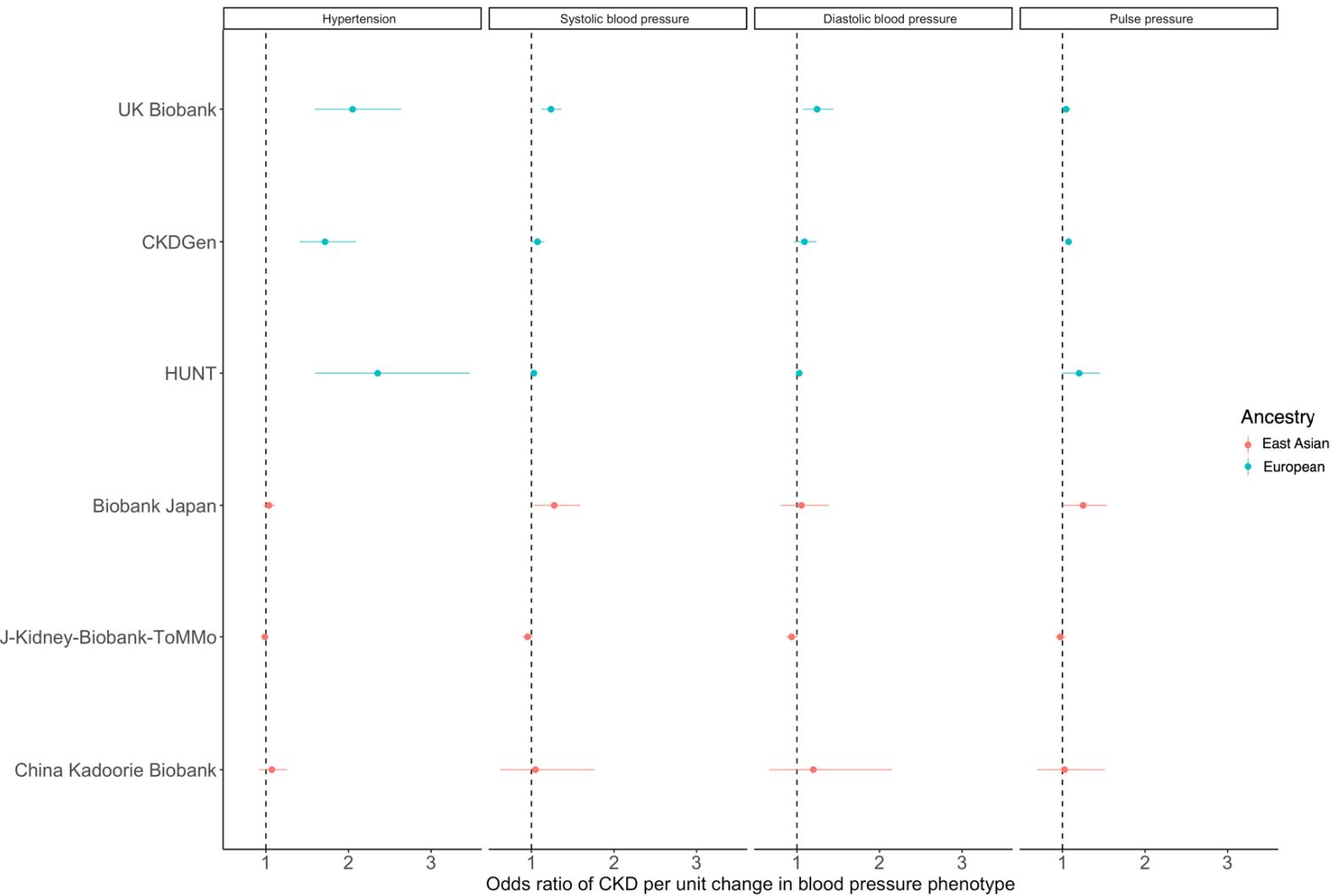
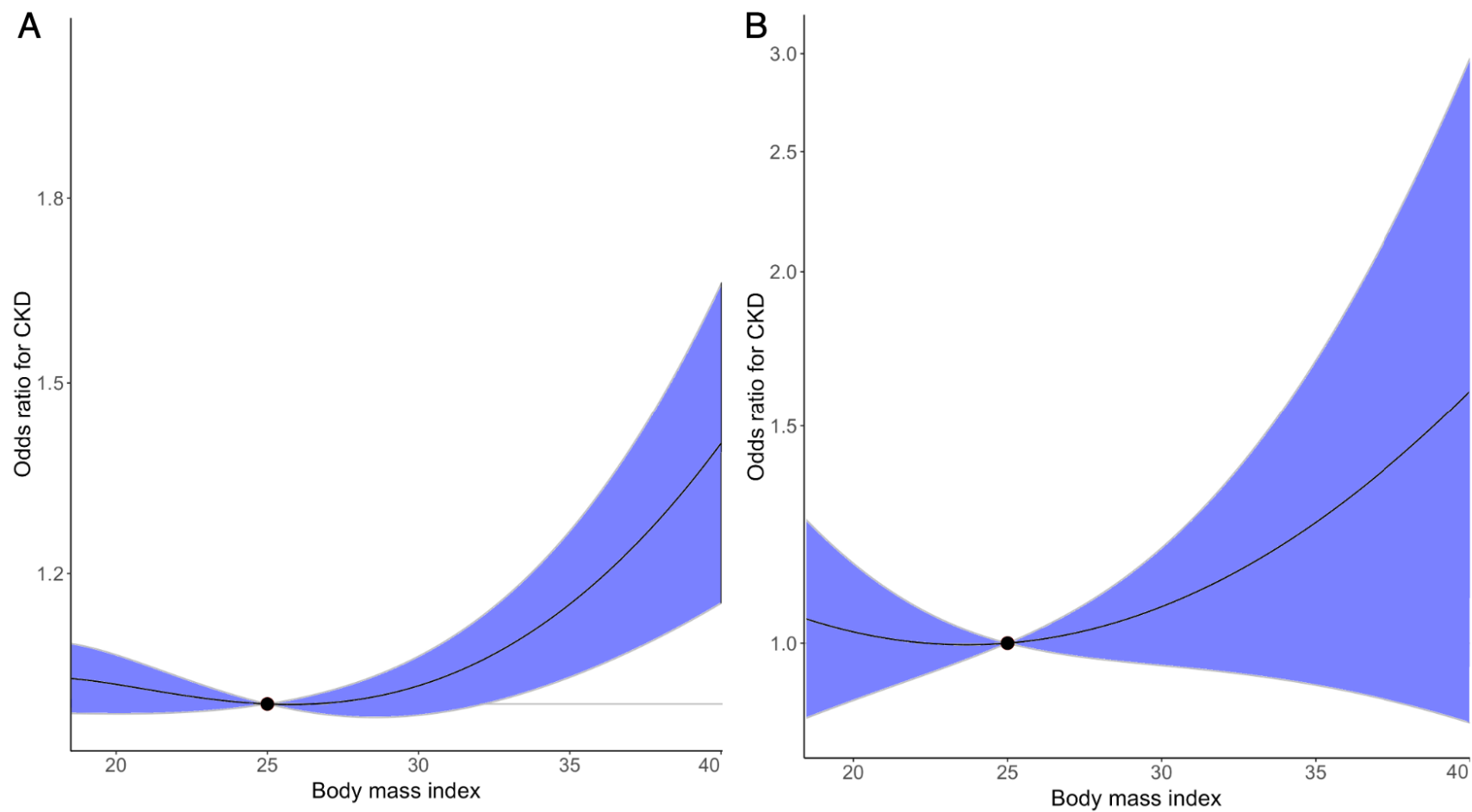


Figure 4.



Risk factor inclusion & instrument selection

86 risk factors from PUBMED
using text mining tool MELODI

37 non unique risk factors excluded

49 unique risk factors

East Asian samples

36 risk factors excluded since no genetic
variants associated with the risk factor
at $P < 5 \times 10^{-8}$

17 risk factors closely related to the
remaining 13 risk factors

European samples

6 risk factors excluded since no genetic
variants associated with the risk factor
at $P < 5 \times 10^{-8}$

45 risk factors closely related to the
remaining 43 risk factors

Outcome selection

CKD (ICD10 coded) from China Kadoorie Biobank
CKD (eGFR<60 ml/min/1.73m² and/or the presence of
urine abnormality) from J-Kidney-Biobank/ToMMo
CKD (eGFR<60 ml/min/1.73m²)
and eGFR from Biobank Japan

CKD (ICD10 coded) from UK Biobank and HUNT;
CKD (eGFR<60 ml/min/1.73m²) from CKDGen
and eGFR from UK Biobank, HUNT and CKDGen

**Causal estimation
using linear
Mendelian
radnomization (MR)**

17 risk factors in East Asians

MR and sensitivity
analyses

CKD and eGFR in East Asians

45 risk factors in Europeans

MR and sensitivity
analyses

CKD and eGFR in Europeans

Evaluation of causal evidence

Overall evidence	Validation criteria		
	Strength of causal estimates	Fitness of MR assumptions	Direction of effect across studies
Reliable evidence	MR $P < 1.1 \times 10^{-3}$ in at least one study and MR $P < 0.05$ in another study (replicated)	MR estimates consistent across MR sensitivity analyses and MR- Egger intercept showed little evidence of horizontal pleiotropy	Direction of MR estimates consistent across studies
Weak evidence	Other situations including either weak MR strength or no consistency or no directionality evidence		

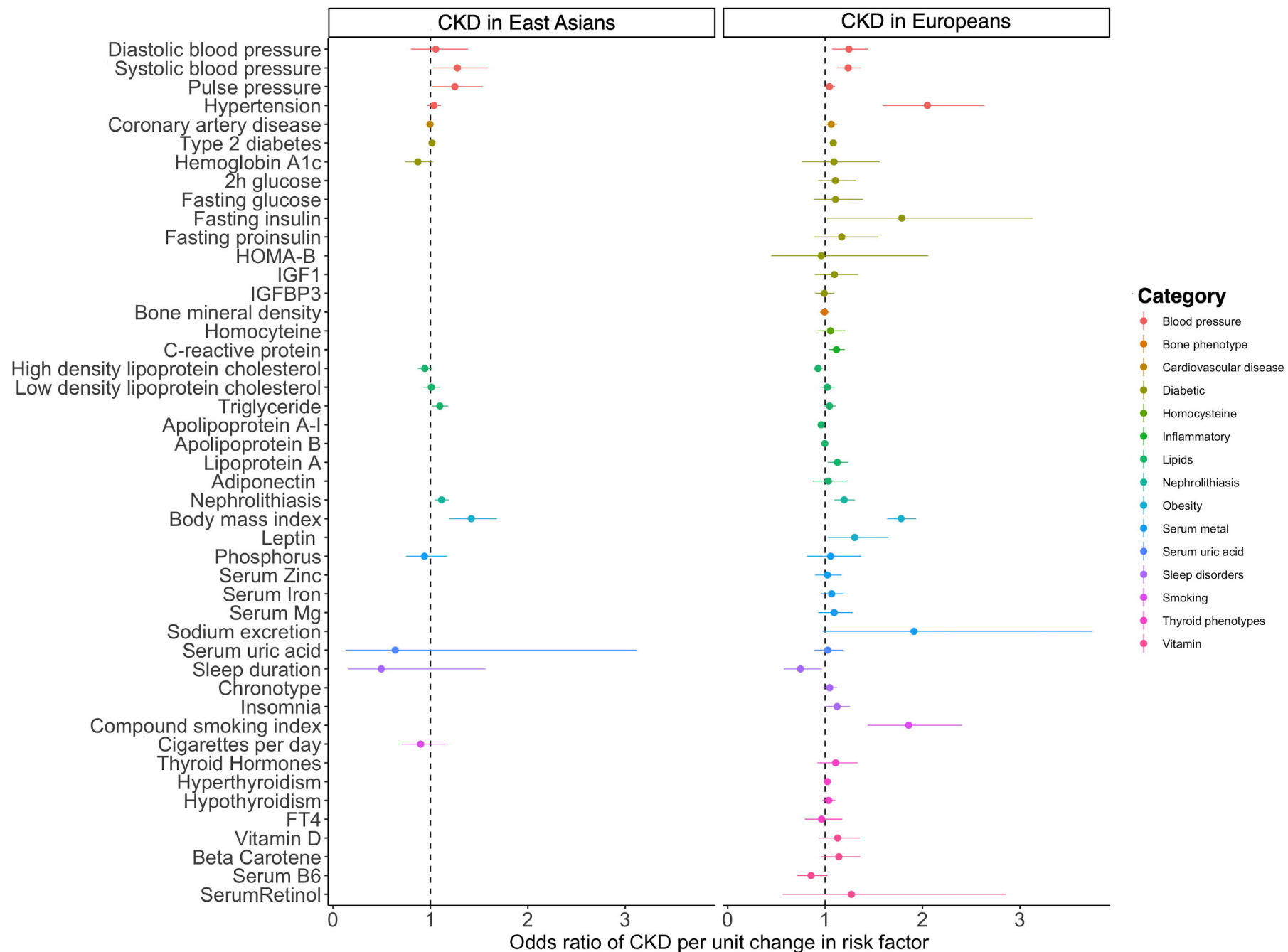
**Follow-up linear
and non-linear MR
analyses**

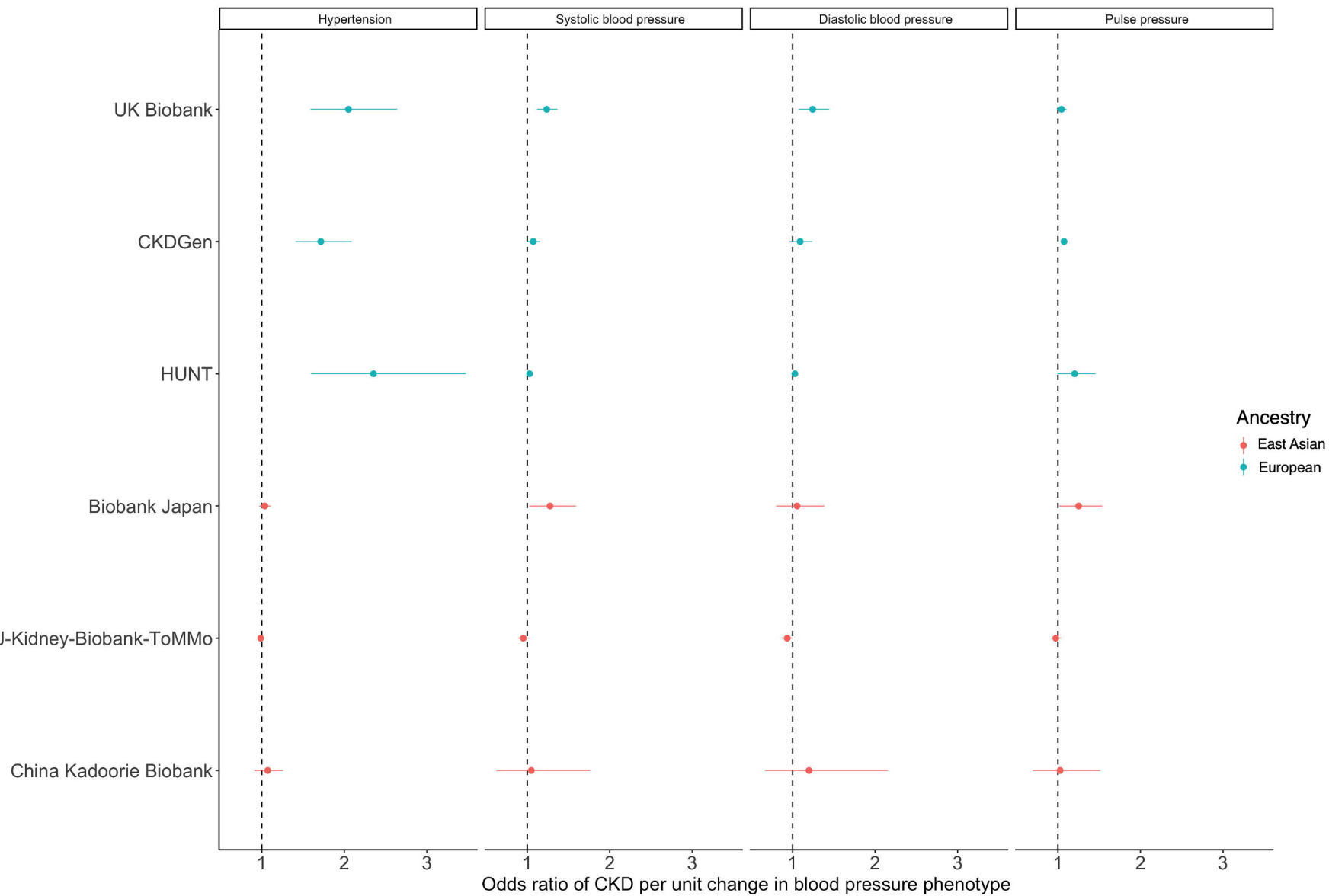
Effects of glycemic phenotypes and T1D on CKD and eGFR

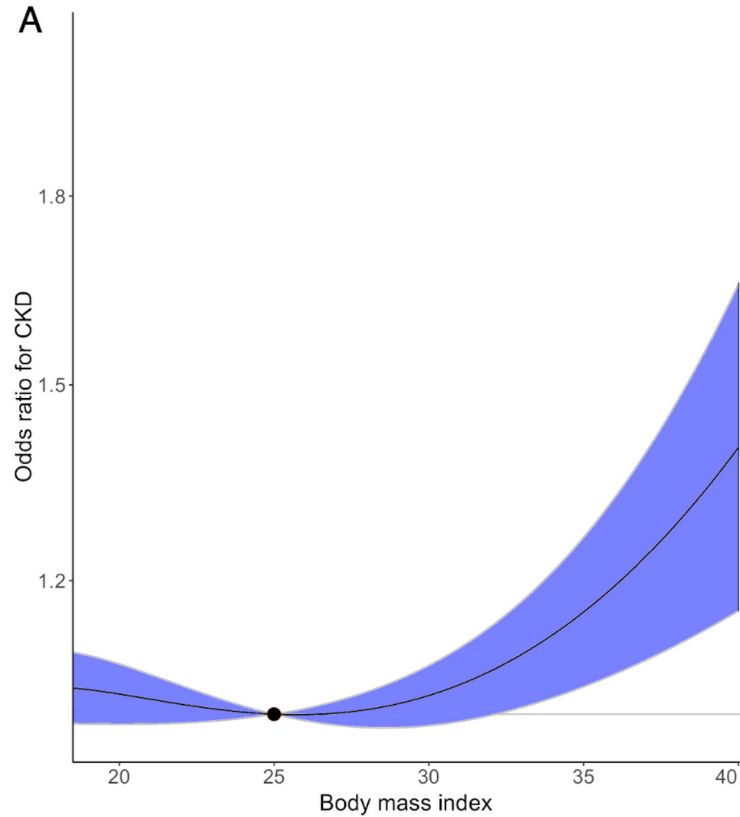
Causal links between BMI, T2D and hypertension on CKD and HDL-C on APOA1 using multivariable MR

Effects of CETP and Lp(a) size and concentration on CKD and eGFR

Non-linear relation for BMI and fasting glucose on CKD in UK Biobank and HUNT using non-linear MR





A**B**