

Blood neurofilament light concentration at admittance: a potential prognostic marker in COVID-19

^aAnne Hege Aamodt, M.D., PhD.; ^{a,b}Einar August Høgestøl M.D.; ^aTrine Haug Popperud, M.D., Ph.D.; ^{b,c}Jan Cato Holter, M.D., Ph.D.; ^{b,d}Anne Ma Dyrhol-Riise, M.D., Ph.D.; ^{b,d}Kristian Tonby, M.D, Ph.D.; ^dBirgitte Stiksrud, M,D., Ph.D.; ^eElse Quist-Paulsen, M.D., Ph.D.; ^{e, f}Tone Berge, M.Sc., Ph.D.; ^{g,h}Andreas Barratt-Due, M.D., Ph.D.; ^{b,h,i}Pål Aukrust, M.D., Ph.D.; ^{j,k}Lars Heggelund, M,D., Ph.D.; ^{l,m}Kaj Blennow, M.D., Ph.D.; ^{m,n,o}Henrik Zetterberg, M.D., Ph.D.; ^{a,b}Hanne Flinstad Harbo, M.D., Ph.D.

^aOslo University Hospital, Department of Neurology, Oslo, Norway

^bUniversity of Oslo, Institute of Clinical Medicine, Oslo, Norway

^cOslo University Hospital, Department of Microbiology, Oslo, Norway

^dOslo University Hospital Department of Infectious Diseases, Oslo University Hospital, Oslo, Norway

^eOslo Metropolitan University, Department of Mechanical, Electronic and Chemical Engineering, Oslo, Norway

^fOslo University Hospital, Department of Research, Innovation and Education, Oslo, Norway

^gOslo University Hospital, Division of Emergencies and Critical Care, Rikshospitalet, Oslo, Norway

^hOslo University Hospital, Department of Immunology, Oslo University Hospital, Oslo, Norway

NOTE: This preprint reports new research that has not been certified by peer review and should not be used to guide clinical practice.

ⁱOslo University Hospital, Research Institute of Internal Medicine, Oslo, Norway

^jDrammen Hospital, Department of Internal Medicine, Vestre Viken Hospital Trust, Drammen, Norway.

^kUniversity of Bergen, Department of Clinical Science, Bergen, Norway».

^lDepartment of Psychiatry and Neurochemistry, Institute of Neuroscience & Physiology, the Sahlgrenska Academy at the University of Gothenburg, Mölndal, Sweden

^mClinical Neurochemistry Laboratory, Sahlgrenska University Hospital, Mölndal, Sweden

ⁿDepartment of Neurodegenerative Disease, UCL Institute of Neurology, London, United Kingdom

^oUK Dementia Research Institute at UCL, London, United Kingdom

Corresponding author: Anne Hege Aamodt, M.D., Ph.D.

Email: a.h.aamodt@medisin.uio.no

Search terms: SARS-CoV-2, COVID-19, CNS, neurofilament light, glial fibrillary acidic protein, mortality

Abbreviations used in this paper: CNS, central nervous system; SARS-CoV-2, severe acute respiratory syndrome coronavirus 2; ACE-2, angiotensin-converting enzyme 2; NfL, neurofilament light protein; GFAP, glial fibrillary acidic protein

Study funding: Supported by Oslo University Hospital, Research Council of Norway grant no 312780, Vivaldi Invest A/S owned by Jon Stephenson von Tetzchner.

Statistical Analysis: Einar A. Høgestøl and Trine H. Popperud

48

49 Disclosure

50 A.H. Aamodt has received travel support, honoraria for advice or lecturing from Bayer,
51 Boehringer Ingelheim, BMS, Allergan, Teva, Sanofi-Genzyme, Novartis, Roche, and Teva
52 and research grant from Medtronic and Boehringer Ingelheim (outside submitted work).

53 T.H. Popperud has received honoraria for lecturing from Alexion and unrestricted research
54 support from Octapharma (outside the submitted work).

55 E. A. Høgestøl has received honoraria for lecturing from Biogen, Merck and Sanofi-
56 Genzyme, and unrestricted research support from Merck and Sanofi-Genzyme (outside the
57 submitted work).

58 H.F. Harbo has received travel support, honoraria for advice or lecturing from Biogen Idec,
59 Sanofi-Genzyme, Merck, Novartis, Roche, and Teva and an unrestricted research grant from
60 Novartis (outside the submitted work).

61 Kaj Blennow has served as a consultant, at advisory boards, or at data monitoring committees
62 for Abcam, Axon, Biogen, JOMDD/Shimadzu. Julius Clinical, Lilly, MagQu, Novartis,
63 Roche Diagnostics, and Siemens Healthineers, and is a co-founder of Brain Biomarker
64 Solutions in Gothenburg AB (BBS), which is a part of the GU Ventures Incubator Program
65 (outside the submitted work).

66 H. Zetterberg has served at scientific advisory boards for Denali, Roche Diagnostics, Wave,
67 Samumed, Siemens Healthineers, Pinteon Therapeutics and CogRx, has given lectures in
68 symposia sponsored by Fujirebio, Alzecure and Biogen, and is a co-founder of Brain
69 Biomarker Solutions in Gothenburg AB (BBS), which is a part of the GU Ventures Incubator
70 Program (outside the submitted work).

Abstract

Objective

To test the hypotheses that blood concentrations of neurofilament light chain protein (NfL) and glial fibrillary acidic protein (GFAP) can serve as biomarkers for disease severity in COVID-19 patients.

Methods

Forty-seven inpatients with confirmed COVID-19 had blood samples drawn on admission for assessing serum biomarkers of CNS injury by Single molecule array (Simoa). Concentrations of NfL and GFAP were analyzed in relation to symptoms, clinical signs, inflammatory biomarkers and clinical outcomes. We used multivariate linear models to test for differences in biomarker concentrations in the subgroups, accounting for confounding effects.

Results

In total, 21 % (n=10) of the patients were admitted to an intensive care unit, whereas the overall mortality rate was 13 % (n=6). Non-survivors had higher serum concentrations of NfL than patients who were discharged alive both in adjusted analyses ($p=2.6 \times 10^{-7}$) and unadjusted analyses ($p=0.001$). Serum concentrations of GFAP were significantly higher in non-survivors than survivors in adjusted analyses ($p=0.02$). The NfL concentrations in non-survivors increased over repeated measurements, whereas the concentrations in survivors were stable. Significantly higher concentrations of NfL were found in patients reporting fatigue, while reduced concentrations were found in patients experiencing cough, myalgia and joint pain.

94

95 **Conclusion**

96 Increased concentrations of NfL and GFAP in COVID-19 patients on admission may indicate
97 increased mortality risk. Measurement of blood biomarkers for nervous system injury can be
98 useful to detect and monitor CNS injury in COVID-19.

99 **Introduction**

100 Emerging evidence suggest that respiratory syndrome coronavirus 2 (SARS-CoV-2) infection
 101 may affect the nervous system.^{1, 2} Increasing numbers of patients with COVID-19 are
 102 reported to have neurological, neuropsychological and neuropsychiatric symptoms and
 103 manifestations.²⁻⁵ Possible mechanisms for nervous system affection in COVID-19 have been
 104 suggested, such as direct infection of the nervous system and inflammatory and autoimmune
 105 mechanisms.⁶⁻¹³ However, the pathobiology is incompletely understood.^{7, 14, 15}

106 Early identification of central nervous system (CNS) manifestations may guide
 107 treatment algorithms and thereby improve clinical outcome. Meticulous neurological
 108 monitoring is important to assess the frequency and degree of nervous system affections in
 109 COVID-19 patients. Blood-based biomarkers for CNS injury, like Neurofilament light chain
 110 protein (NfL) and Glial fibrillary acidic protein (GFAP) may be valuable tools for detection
 111 and monitoring manifestation during the acute phase. GFAP is an intermediate filament
 112 highly expressed in astrocytes, and is increasingly used as a serum biomarker of astrocytic
 113 activation/injury.¹⁶ NfL is a subunit of neurofilaments, which are cylindrical proteins
 114 exclusively located in the neuronal axons, that can be measured in blood as a marker of
 115 neuronal injury.^{17, 18} In a recent study, neurochemical evidence of neuronal injury and glial
 116 activation in patients with moderate and severe COVID-19 infection was demonstrated by
 117 assessment of NfL and GFAP.^{19, 20} However, more studies are required to evaluate the
 118 usefulness of these biomarkers in COVID-19 patients.

119 The aim of this study was to explore the association between disease severity in
 120 COVID-19 patients and blood concentrations of NfL and GFAP.

Methods

Study population

This study includes 47 adult patients (≥ 18 years old) with COVID-19, as assessed by a positive SARS-CoV-2 PCR test targeting the E-gene on oro- and nasopharyngeal specimens. The patients were consecutively recruited from Oslo University Hospital (n = 26) and Drammen Hospital, Vestre Viken Hospital Trust (n=21) between March 6 and May 22, 2020 to a clinical cohort study (Norwegian SARS-CoV-2 study; ClinicalTrials.gov, number NCT04381819). Clinical information and routine laboratory samples were for most cases collected within 48 hours after hospitalization. Peripheral blood samples were drawn at inclusion, day 2-5 and day 7-10 during hospitalization and repeated later for patients who were hospitalized longer. Using a modified version of the International Severe Acute Respiratory and emerging Infection Consortium (ISARIC)/World Health Organization (WHO) Clinical Characterization Protocol (CCP), clinical and routine data were abstracted from electronic medical records and deposited into an ISARIC (isaric.tghn.org) REDCap database (Research Electronic Data Capture, Vanderbilt University, TN, hosted by University of Oxford, UK).

Sample processing and analyses of biomarkers

Blood samples were collected with 4 mL Vacuette® (Greiner bio-one International) and processed within one hour by centrifugation at 2000g for 10 minutes at room temperature. Serum aliquots were immediately stored at -80°C until analysis. Samples were thawed only once during the processing. Measurement of GFAP and NfL in serum samples were performed in the Clinical Neurochemistry Laboratory at the

Sahlgrenska University Hospital, Sweden, by board-certified laboratory technicians blind to clinical data. Commercially available single molecule array (Simoa) assays were run on an HD-X Analyzer (Human Neurology 4-Plex A assay (N4PA advantage kit, 102153), as described by the manufacturer (Quanterix, Billerica, MA). A single batch of reagents was used; intra-assay coefficients of variation were below 10% for all analyses. The results of blood NfL and GFAP concentrations were compared with age-related reference limits established in house from 2.000 healthy control individuals at the Clinical Neurochemistry Laboratory, Sahlgrenska University Hospital, Sweden (unpublished data).

Statistical analysis

For statistical analyses, the R software with a common set of packages for the purpose was used.²¹ Unique multivariate linear models were used to test for changes in the levels of all biomarkers on admission to address group differences in symptoms, clinical signs and outcomes. Age, gender and creatinine were adjusted for in all linear models separately and unique models of confounding effects according to the resulting performance of the respective linear model were acquired. To correlate between NfL and GFAP concentrations with levels of the other biomarkers, Pearson's correlations were conducted. The biomarker data were logarithmic transformed to account for the lack of normal distribution. For the biomarkers with low resulting levels (between 0 and 1), a constant of 1 was added to avoid resulting negative log transformed values. All tests were two-sided and P-values < .05 were considered significant.

Ethical considerations

Informed consents were obtained from all patients or next-of-kin if patients were incapacitated of giving consent. The study was approved by the South-Eastern Norway Regional Health Authority (reference number: 106624).

Sources of support

This study received funding from Oslo University Hospital and the Research Council of Norway grant no 312780 and has received private donation from Vivaldi Invest A/S owned by Jon Stephenson von Tetzchner.

Results

Baseline characteristics

The mean age of the included 47 patients was 60.3 (SD 16.3, range 27-93) years and the male proportion was 72 % (n=34) (Table 1). On average, the patients had symptoms of COVID-19 infection for nine days (range 0-45) before hospitalization due to COVID-19 disease. The most common neurological symptoms among all patients were headache, ageusia, anosmia and confusion, while none of the patients suffered from stroke (Table 1). Moreover, 26 patients had myalgia (68 % of all reported cases) and 10 patients reported joint pain (26 % of all reported cases). In total, 21 % (n=10) of the patients were admitted to an intensive care unit (ICU). Six patients (13 %) died from COVID-19 infection during the hospital stay.

192 **Table 1.** Characteristics of the COVID-19 cohort included in the study.

| | Baseline |
|--|------------------------|
| (a) Characteristics | n=47 |
| Female % (n) | 28% (13) |
| Age, mean (SD, range), years | 60.3 (16.3, 27-93) |
| Days from symptom onset until hospitalization (SD, range) | 9.0 (7.7, 0-45) |
| Weight, mean (SD, range), kg | 80.1 (16.7, 54-110) |
| Height, mean (SD, range), cm | 173.8 (11.0, 160-195) |
| BMI, mean (SD, range) | 26.0 (4.6, 18.3-33.8) |
| Present and previous smoking % (n) | 26 (12) |
| Intensive care unit % (n) | 21 (10) |
| (b) Symptoms and signs on admission | |
| History of fever % (n) | 89 (40) |
| Temperature, mean, (SD, range), degrees Celsius | 37.9 (1.0, 35.9-39.8) |
| Cough % (n) | 85 (34) |
| Fatigue % (n) | 19 (8) |
| Anorexia % (n) | 42 (8) |
| (c) Neurological symptoms | |
| Headache % (n) | 37 (14) |
| Ageusia % (n) | 21 (4) |
| Anosmia % (n) | 16 (3) |
| Confusion % (n) | 13 (6) |
| Seizures % (n) | 2 (1) |
| Meningitis / encephalitis % (n) | 5 (1) |
| Neurological disorders % (n) | 4 (2) |
| Stroke % (n) | 0 (0) |
| (d) Musculoskeletal symptoms | |
| Myalgia % (n) | 68 (26) |
| Joint pain % (n) | 26 (10) |
| (e) Biomarkers on admission | |
| Serum GFAP concentrations, mean (SD, range), pg/mL | 286.4 (221, 74-1212) |
| Above cut-off, % (n) | 48 (22) |
| Serum NfL concentrations, mean (SD, range), pg/mL | 33.7 (36.0, 5.8-174.4) |
| Above cut-off, % | 30 (14) |
| CRP, mean (SD, range), mg/L | 97.4 (92.4, 0-400) |
| Ferritin, mean (SD, range), µg/L | 952 (747, 21-3465) |
| White blood cell count, mean (SD, range), x 10 ⁹ /L | 6.5 (3.1, 2.6-18.0) |
| Procalcitonin, mean (SD, range), µg/L | 0.7 (0.1, 0-16.3) |
| CK, mean (SD, range), U/L | 331.9 (733.4, 19-3572) |
| Creatinine, mean (SD, range), µmol/L | 95.8 (51.4, 55-281) |
| Neutrophil granulocyte count, mean (SD, range), x 10 ⁹ /L | 4.8 (27, 1.3-11.3) |

194

195 Serum concentrations of NfL and GFAP in COVID-19 patients

196 On admission, NfL and GFAP concentrations above reference limits were measured
 197 in 30 % (n=14) and 48 % (n=22) of the COVID-19 patients, respectively (Table 1).
 198 Strong correlations between NfL concentrations and GFAP ($p=2.2 \times 10^{-7}$),
 199 procalcitonin- ($p=0.001$) and creatinine ($p<0.001$) concentrations and neutrophil
 200 granulocyte count ($p=0.01$) were found. No correlation between NfL concentrations
 201 and CRP, creatine kinase, ferritin or white blood cell count was detected (Figure 1).
 202 GFAP concentrations were not associated with any other biomarkers than NfL
 203 concentrations (Figure 2). When comparing differences in NfL and GFAP
 204 concentrations to symptoms, we found that NfL was significantly higher among
 205 patients with fatigue ($p=0.02$) and reduced in patients with myalgia ($p=8.7 \times 10^{-4}$),
 206 cough ($p=3.1 \times 10^{-3}$) and with joint pain ($p=6.6 \times 10^{-3}$) (Table 2). However, no
 207 associations between GFAP concentrations and clinical signs were found.

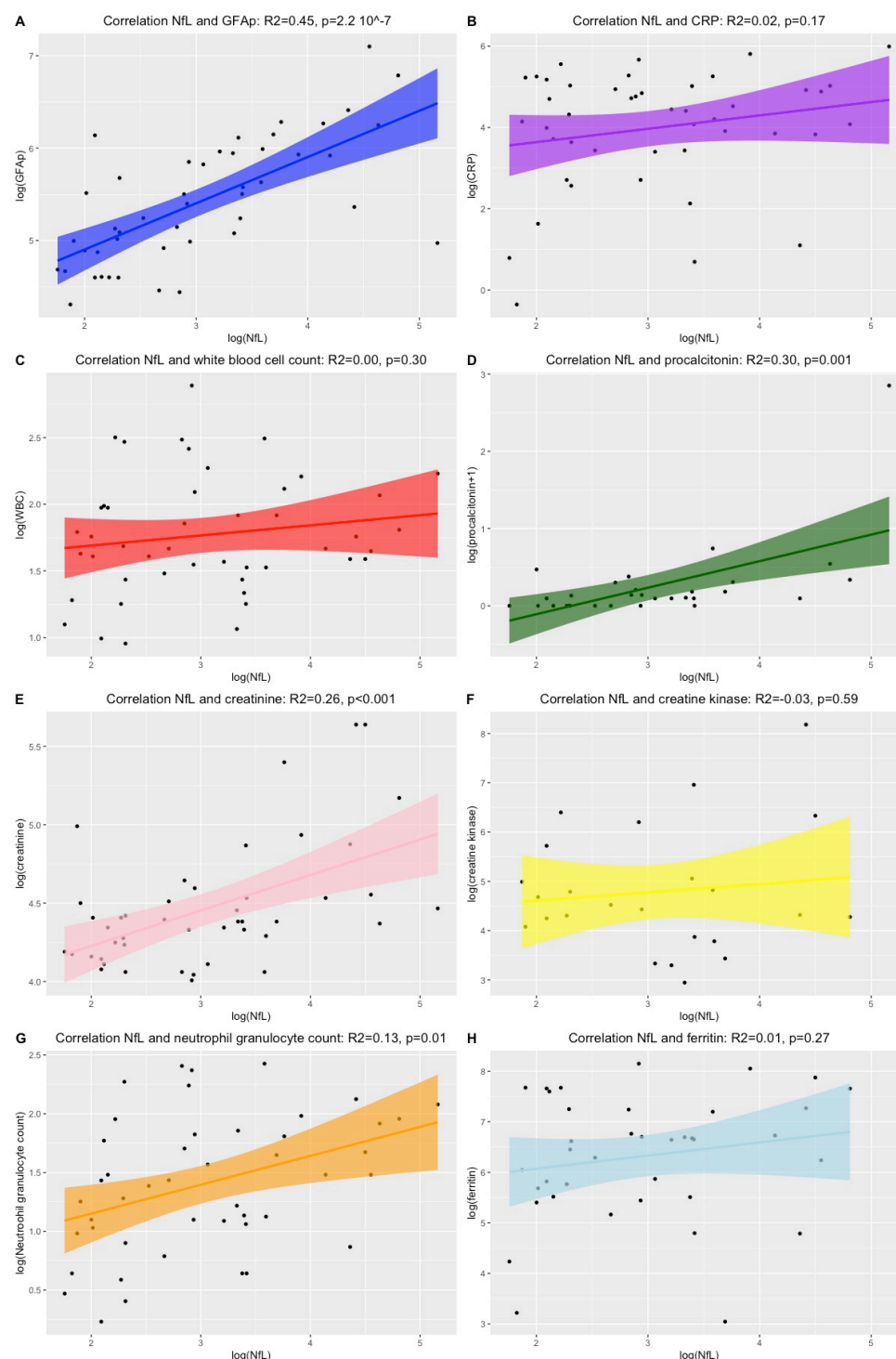


Figure 1. An overview of Pearson's correlation between NfL concentrations and other biomarkers.

Depicted are the correlations between NfL and GFAP concentrations (A), CRP (B), white blood cell count (C), procalcitonin (D), creatinine (E), creatine kinase (F),

neutrophil granulocyte count (G) and ferritin (H). Depicted are the logarithmic transformed values.

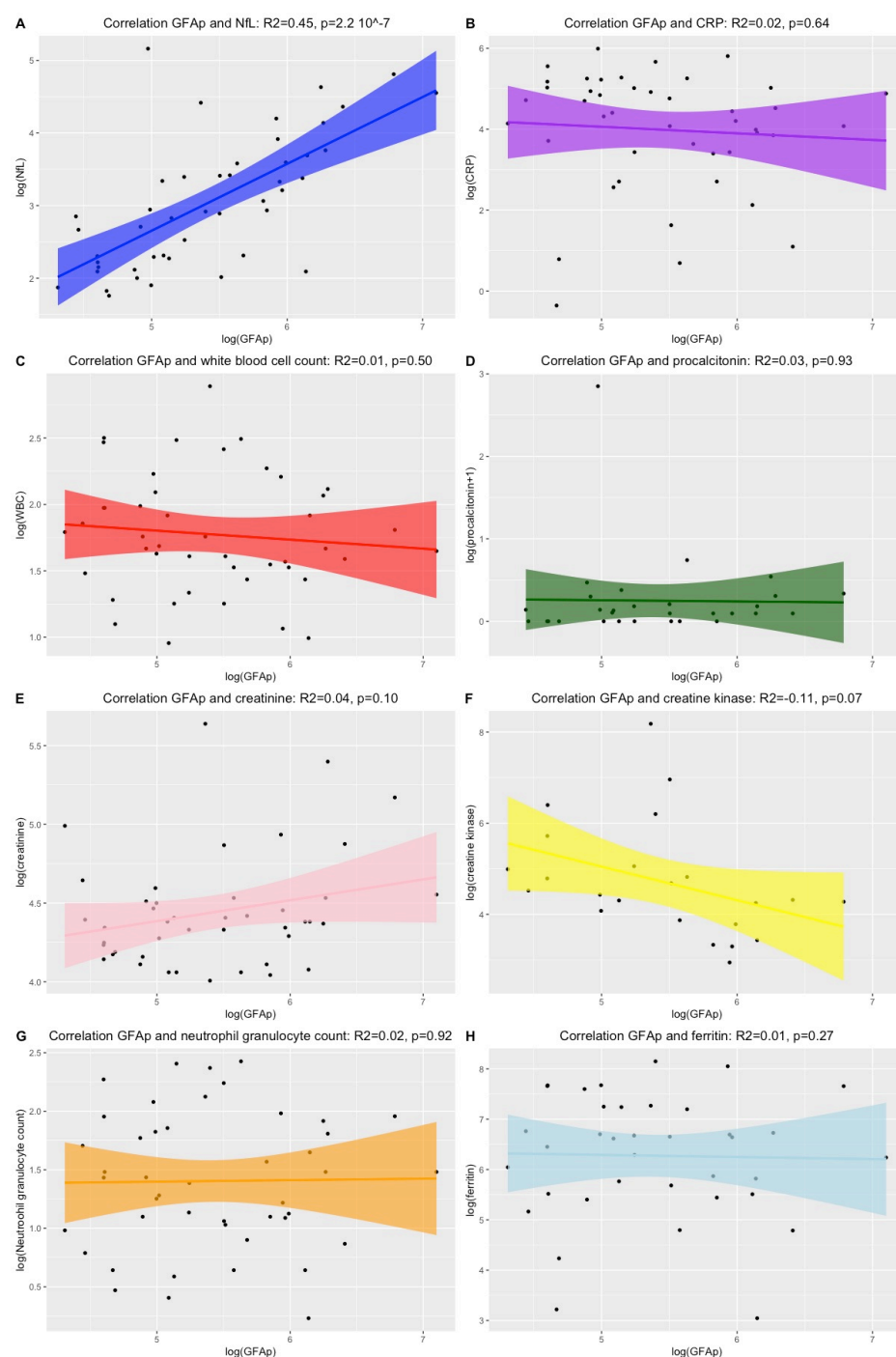


Figure 2. An overview of Pearson's correlation between GFAP concentrations and other biomarkers.

218 Depicted are the correlations between GFAP concentrations and NfL concentrations
 219 (A), CRP (B), white blood cell count (C), procalcitonin (D), creatinine (E), creatine
 220 kinase (F), neutrophil granulocyte count (G) and ferritin (H). Depicted are the
 221 logarithmic transformed values.

222

223 Table 2. Differences in NfL concentrations related to symptoms, treatment and
 224 outcome.

| Symptom | Linear regression, adjusting for age and creatinine ($R^2=0.26$) | | |
|---------------------------------|--|-------|------------------------------|
| | <i>t</i> | R^2 | <i>p</i> |
| Fever | -0.37 | 0.24 | 0.72 |
| Cough | 3.16 | 0.38 | 3.1 x 10⁻³ |
| Fatigue | 2.50 | 0.34 | 0.02 |
| Anorexia | -1.24 | 0.46 | 0.23 |
| Headache | 1.73 | 0.29 | 0.09 |
| Ageusia | -1.54 | 0.48 | 0.14 |
| Anosmia | 0.06 | 0.41 | 0.95 |
| Confusion | -0.95 | 0.26 | 0.35 |
| Myalgia | 3.59 | 0.42 | 8.7 x 10⁻⁴ |
| Joint pain | 2.86 | 0.37 | 6.6 x 10⁻³ |
| Present and/or previous smoking | -0.34 | 0.49 | 0.73 |
| Intensive care unit | -1.93 | 0.30 | 0.06 |
| Ventilatory support | 1.40 | 0.28 | 0.17 |
| Outcome - Died | -6.13 | 0.60 | 2.6 x 10⁻⁷ |

225

Serum concentrations of NfL and GFAP in relation to outcomes

Concentrations of NfL were significantly higher in non-survivors (n=6) compared to survivors ($p=2.6 \times 10^{-7}$) when adjusting for age and creatinine levels on admission and in unadjusted analyses ($p=0.001$) (Figure 3). Additionally, concentrations of GFAP were significantly higher in non-survivors than survivors when adjusting for age ($p=0.02$) (Table 3).

Table 3. Differences in GFAP concentrations related to symptoms, treatment and outcome.

| Symptom | Linear regression, adjusting for age ($R^2=0.40$) | | |
|---------------------------------|---|-------|----------|
| | <i>t</i> | R^2 | <i>p</i> |
| Fever | 0.37 | 0.39 | 0.72 |
| Cough | 0.57 | 0.37 | 0.58 |
| Fatigue | 1.81 | 0.43 | 0.08 |
| Anorexia | -0.22 | 0.52 | 0.83 |
| Headache | -0.26 | 0.39 | 0.80 |
| Ageusia | 0.00 | 0.52 | 1.00 |
| Anosmia | 0.70 | 0.53 | 0.49 |
| Confusion | -1.44 | 0.42 | 0.16 |
| Myalgia | 1.86 | 0.44 | 0.07 |
| Joint pain | 1.78 | 0.43 | 0.08 |
| Present and/or previous smoking | -0.33 | 0.39 | 0.75 |
| Intensive care unit | 0.44 | 0.39 | 0.66 |
| Ventilatory support | -0.95 | 0.40 | 0.35 |

| | | | |
|-----------------------|--------------|-------------|-------------|
| Outcome - Died | -2.40 | 0.46 | 0.02 |
|-----------------------|--------------|-------------|-------------|

Significant differences among non-survivors compared to survivors were also observed in the adjusted linear models for the level of CRP ($p=0.02$), creatine kinase ($p=0.02$) and procalcitonin ($p=0.003$) on admission, but was not observed for the other biomarkers (white cell blood count, creatinine concentration or neutrophil granulocyte count) (Figure 2 and 3). The longitudinal measurements of NfL concentrations in patients available for repeated measurements, showed increased serum concentrations of NfL at hospital admittance and a tendency of further increased concentrations during hospitalization in patients who died of COVID-19 (Figure 4).

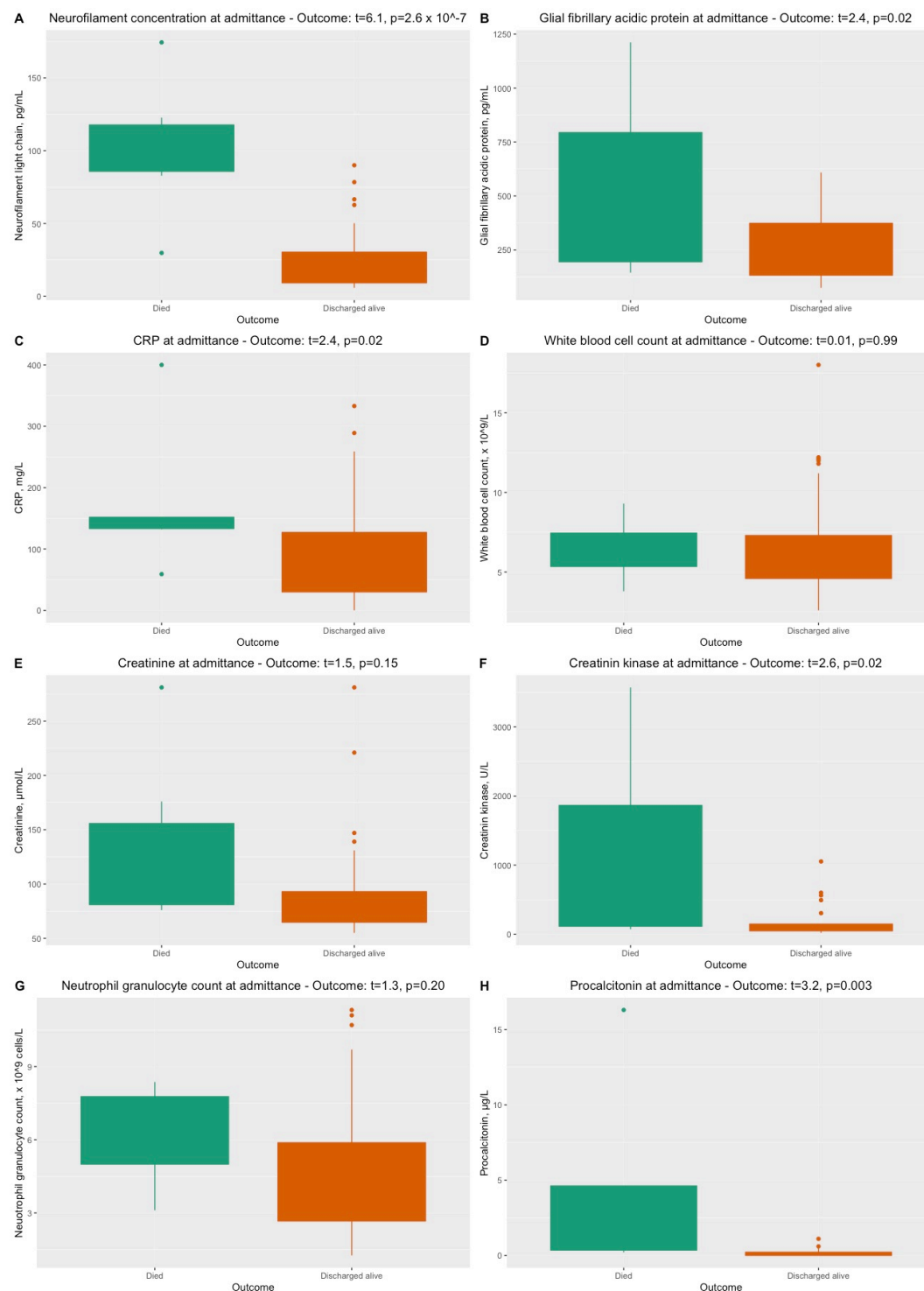


Figure 3. Levels of biomarkers among patients who died and who survived COVID-19 in this study.

Statistical analyses performed with unique linear models adjusting for confounding effects. A: NfL concentrations, B: GFAP concentrations, C: CRP, D: White cell blood

count, E: creatinine, F: creatine kinase, G: neutrophil granulocyte count and H: procalcitonin.

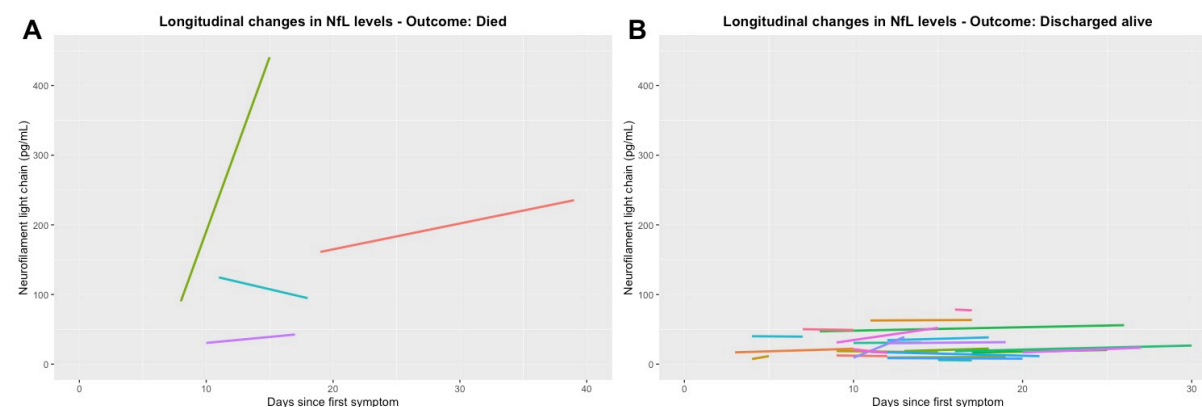


Figure 4. Longitudinal assessment of NfL concentrations among patients who died and who survived COVID-19 in this study.

A: Four subjects with longitudinal data who died. B: An overview of the subjects who were discharged alive after hospitalization. Only subjects with longitudinal data are depicted.

The patients with the highest concentrations of NfL (> 120, max 464 pg/mL) were admitted 4 to 7 days after symptom onset and died during their hospital stay (median 14, range 11-42 days after admission). They had respiratory symptoms and malaise as initial symptoms. In addition, they all reported neurological symptoms (headache, dizziness) and a very severe disease course resulting in death during hospitalization. The concentrations of NfL generally increased during the disease course in these subjects.

Discussion

This pilot study confirms the frequent observations of neurological symptoms in COVID-19 disease. The biomarker results indicate that increased concentrations of serum NfL in patients with COVID-19 may be a predictor of a severe disease course and increased mortality. Concentrations of serum GFAP were also significantly associated with mortality, although not with any CNS symptoms or clinical signs. Increased NfL and GFAP concentration in patients with COVID-19 can be presumed to reflect affection of the nervous system. Although both the peripheral and central nervous system contain NfL, the correlation between cerebrospinal fluid and blood is so high that the majority of the blood NfL must come from the CNS.^{22, 23} Furthermore, GFAP is considered to be fairly specific to CNS.²⁴ NfL concentrations in serum at admittance were also associated with reported symptoms of fatigue, which is a general and unspecific symptom.

Of other biomarkers available in this study, increased levels of procalcitonin were apparently associated with increased concentrations of NfL. However, this result is influenced by a few patients with very high measurements. Thus, the implications of these findings are not clear. Moreover, increased levels of creatinine and neutrophil granulocyte counts were associated with higher concentrations of NfL, but the increased concentrations of NfL were not influenced by the creatinine levels in our analyses. Interestingly, NfL concentrations were not correlated with CRP or ferritin, often found to be associated with hyperinflammation in COVID-19 patients, suggesting that the raised NfL concentrations merely reflect enhanced inflammation.

The identification of biomarkers in blood to assess nervous system manifestation will be important in order to monitor the severity of the disease and optimize treatment in COVID-19 patients. Measurements of NfL and GFAP in blood can be clinically useful to assess neurological affection in COVID-19, since this can

easily be managed despite medical isolation procedures. Although NfL has been shown to be useful as diagnostic, prognostic and monitoring biomarker in a wide range of other neurological conditions,^{23, 25-27} more studies are needed to assess the applicability of NfL in COVID-19.

One could claim that the high concentrations of NfL reflect medications used in ICU. However, a recent study of NfL and other blood biomarkers in patients undergoing inhalation general anesthesia showed a decrease in NfL concentrations after five hours compared to baseline. This may indicate that increase in NfL concentration in COVID-19 patients treated in ICU might be even larger in magnitude, but are masked by anesthesia-induced decreases.²⁸

NfL was not increased in anosmia in this study, although the anosmia in COVID-19 is considered to be related to injury of the olfactory nerve.^{11, 29} Likewise, headache was not associated with increased concentrations of NfL or GFAP in our study. Headache occurring in temporal association with systemic viral infections such as COVID-19, in the absence of meningitis or encephalitis, is well-known clinically.^{15, 30} However, the patients with highest NfL values did all present with headache. They were all intubated shortly after admission, therefore further neurological examination and evaluation was limited. In contrast to other COVID-19 studies, none of the included patients in this study underwent a stroke during hospitalization.^{4, 5}

In this pilot study there are several limitations. First, the number of patients with full data sets available was modest. Secondly, detailed and systematic neurological, neurophysiological and neuroradiological investigations were not possible to perform, since our patients were treated under medical isolation

procedures at different units and several patients needed ventilatory support in ICUs. Thus, possible association between GFAP and NfL and specific CNS manifestations may have been undetected in this study. In order to study further the questions raised by our observations, we plan a follow-up study of COVID-19 patients up to a year after diagnosis including a systematic neurological assessment.

In conclusion, elevated concentrations of NfL and GFAP in COVID-19 patients seem to be potential prognostic markers in COVID-19. Further studies will be essential in order to elucidate the pathogenesis and the clinical importance of the COVID-19 disease affecting the nervous system and how this can be measured and treated. Prospective neurological and cognitive assessment of individuals with COVID-19 will also be crucial to understand the natural history of COVID-19 in the CNS and monitor for any long-term neurological sequelae.³¹

Appendix 1 Authors

| Name | Location | Contribution |
|-------------------------------|--|--|
| Anne Hege Aamodt, M.D., Ph.D. | Oslo University Hospital, 0424 Oslo, Norway | Drafting the manuscript, study concept, design, analyses, interpretation |
| Einar A. Høgestøl, M.D. | University of Oslo and Oslo University Hospital, 0424 Oslo, Norway, Norway | Study design, analyses and interpretation, drafting and approval the manuscript. |

| | | |
|------------------------------------|--|--|
| Trine Haug Popperud, M.D., Ph.D. | Oslo University Hospital, 0424 Oslo, Norway | Design of the work, data analysis and interpretation, drafting the article, final approval of the version to be published. |
| Jan Cato Holter, M.D., Ph.D. | University of Oslo and Oslo University Hospital, 0424 Oslo, Norway, Norway | Design of the work, data analysis and interpretation, drafting the article, final approval of the version to be published. |
| Anne Ma Dyrhol-Riise, M.D., Ph.D.; | University of Oslo and Oslo University Hospital, 0424 Oslo, Norway, Norway | Patient inclusion, interpretation, revision of manuscript, final approval of the version to be published. |
| Kristian Tonby, M.D, Ph.D | University of Oslo and Oslo University Hospital, 0424 Oslo, Norway, Norway | Patient inclusion, revision of manuscript, final approval of the version to be published. |
| Birgitte Stiksrud, MD, PhD | Oslo University Hospital, 0424 Oslo, Norway | Patient inclusion, revision of manuscript, final approval of the version to be published. |

| | | |
|-------------------------------------|---|--|
| Else Quist-Paulsen, M.D., Ph.D | Oslo University Hospital, 0424 Oslo, Norway | Biochemical measurements, interpretation, revision and final approval of the version to be published. |
| Tone Berge, M.Sc., Ph.D. | Oslo Metropolitan University, Oslo Norway and Oslo University Hospital, 0424 Oslo, Norway | Study design, data interpretation, revision and final approval of the version to be published. |
| Andreas Barratt-Due, M.D., Ph.D. | Oslo University Hospital, 0424 Oslo, Norway | Study concept, data interpretation, revision and final approval of the version to be published. |
| Pål Aukrust, M.D., Ph.D. | University of Oslo and Oslo University Hospital, 0424 Oslo, Norway, Norway | study concept, data interpretation, revision and final approval of the version to be published. |
| Lars Heggelund, M.D., Ph.D. | Vestre Viken Hospital Trust, Drammen Hospital, Dronninggata 28, 3004 Drammen, Norway | Patient inclusion, revision and final approval of the version to be published. |

| | | |
|---|---|---|
| Kaj Blennow, MD, PhD | Clinical Neurochemistry Laboratory, Sahlgrenska University Hospital and Department of Psychiatry and Neurochemistry, the Sahlgrenska Academy at the University of Gothenburg, S-431 80 Mölndal, Sweden | Biochemical measurements, data interpretation, revision and final approval of the version to be published. |
| Henrik Zetterberg, MD, PhD | Department of Psychiatry and Neurochemistry, the Sahlgrenska Academy at the University of Gothenburg, S-431 80 Mölndal, Sweden | Biochemical measurements, data interpretation, revision and final approval of the version to be published. |
| Hanne Flinstad Harbo, M.D., Ph.D, M.H.A. | University of Oslo and Oslo University Hospital, 0424 Oslo, Norway | Study concept, design, analyses, interpretation, drafting and approval of manuscript. |

333

334 **Acknowledgments:** We thank all the patients participating in our studies.

335

References

1. Zhou Z, Kang H, Li S, Zhao X. Understanding the neurotropic characteristics of SARS-CoV-2: from neurological manifestations of COVID-19 to potential neurotropic mechanisms. *J Neurol* 2020.
2. Wu Y, Xu X, Chen Z, et al. Nervous system involvement after infection with COVID-19 and other coronaviruses. *Brain Behav Immun* 2020.
3. Heneka MT, Golenbock D, Latz E, Morgan D, Brown R. Immediate and long-term consequences of COVID-19 infections for the development of neurological disease. *Alzheimers Res Ther* 2020;12:69.
4. Ferrarese C, Silani V, Priori A, et al. An Italian multicenter retrospective-prospective observational study on neurological manifestations of COVID-19 (NEUROCOVID). *Neurol Sci* 2020;41:1355-1359.
5. Mao L, Jin H, Wang M, et al. Neurologic Manifestations of Hospitalized Patients With Coronavirus Disease 2019 in Wuhan, China. *JAMA Neurol* 2020.
6. Ahmed MU, Hanif M, Ali MJ, et al. Neurological Manifestations of COVID-19 (SARS-CoV-2): A Review. *Front Neurol* 2020;11:518.
7. Baig AM, Khaleeq A, Ali U, Syeda H. Evidence of the COVID-19 Virus Targeting the CNS: Tissue Distribution, Host-Virus Interaction, and Proposed Neurotropic Mechanisms. *ACS Chem Neurosci* 2020;11:995-998.
8. Poyiadji N, Shahin G, Noujaim D, Stone M, Patel S, Griffith B. COVID-19-associated Acute Hemorrhagic Necrotizing Encephalopathy: CT and MRI Features. *Radiology* 2020:201187.
9. Coen M, Jeanson G, Culebras Almeida LA, et al. Guillain-Barre syndrome as a complication of SARS-CoV-2 infection. *Brain Behav Immun* 2020.
10. Zanin L, Saraceno G, Panciani PP, et al. SARS-CoV-2 can induce brain and spine demyelinating lesions. *Acta Neurochir (Wien)* 2020.
11. Netland J, Meyerholz DK, Moore S, Cassell M, Perlman S. Severe acute respiratory syndrome coronavirus infection causes neuronal death in the absence of encephalitis in mice transgenic for human ACE2. *J Virol* 2008;82:7264-7275.
12. Moriguchi T, Harii N, Goto J, et al. A first case of meningitis/encephalitis associated with SARS-Coronavirus-2. *Int J Infect Dis* 2020;94:55-58.
13. Wang HY, Li XL, Yan ZR, Sun XP, Han J, Zhang BW. Potential neurological symptoms of COVID-19. *Ther Adv Neurol Disord* 2020;13:1756286420917830.
14. Aamodt AH, Flinstad Harbo H, Eldoen G, Barratt-Due A, Aukrust P. How does COVID-19 affect the brain? *Tidsskr Nor Laegeforen* 2020;140.
15. Belvis R. Headaches During COVID-19: My Clinical Case and Review of the Literature. *Headache* 2020.
16. McMahon PJ, Panczykowski DM, Yue JK, et al. Measurement of the glial fibrillary acidic protein and its breakdown products GFAP-BDP biomarker for the detection of traumatic brain injury compared to computed tomography and magnetic resonance imaging. *J Neurotrauma* 2015;32:527-533.
17. Zetterberg H, Blennow K. Fluid biomarkers for mild traumatic brain injury and related conditions. *Nat Rev Neurol* 2016;12:563-574.
18. Giovannoni G. Peripheral blood neurofilament light chain levels: the neurologist's C-reactive protein? *Brain* 2018;141:2235-2237.
19. Kanberg N, Ashton NJ, Andersson LM, et al. Neurochemical evidence of astrocytic and neuronal injury commonly found in COVID-19. *Neurology* 2020.
20. Virhammar J, Kumlien E, Fallmar D, et al. Acute necrotizing encephalopathy with SARS-CoV-2 RNA confirmed in cerebrospinal fluid. *Neurology* 2020.

- 385 21. R: A Language and Environment for Statistical Computing [computer program].
386 Vienna, Austria: R Foundation for Statistical Computing, 2017.
- 387 22. Gaetani L, Blennow K, Calabresi P, Di Filippo M, Parnetti L, Zetterberg H.
388 Neurofilament light chain as a biomarker in neurological disorders. J Neurol Neurosurg
389 Psychiatry 2019;90:870-881.
- 390 23. Disanto G, Barro C, Benkert P, et al. Serum Neurofilament light: A biomarker of
391 neuronal damage in multiple sclerosis. Ann Neurol 2017;81:857-870.
- 392 24. Thelin EP, Zeiler FA, Ercole A, et al. Serial Sampling of Serum Protein Biomarkers for
393 Monitoring Human Traumatic Brain Injury Dynamics: A Systematic Review. Front Neurol
394 2017;8:300.
- 395 25. Gafson AR, Barthelemy NR, Bomont P, et al. Neurofilaments: neurobiological
396 foundations for biomarker applications. Brain 2020.
- 397 26. Verde F, Steinacker P, Weishaupt JH, et al. Neurofilament light chain in serum for the
398 diagnosis of amyotrophic lateral sclerosis. J Neurol Neurosurg Psychiatry 2019;90:157-164.
- 399 27. Bagnato S, Grimaldi LME, Di Raimondo G, et al. Prolonged Cerebrospinal Fluid
400 Neurofilament Light Chain Increase in Patients with Post-Traumatic Disorders of
401 Consciousness. J Neurotrauma 2017;34:2475-2479.
- 402 28. Deiner S, Baxter MG, Mincer JS, et al. Human plasma biomarker responses to
403 inhalational general anaesthesia without surgery. Br J Anaesth 2020.
- 404 29. Izquierdo-Dominguez A, Rojas-Lechuga MJ, Mullol J, Alobid I. Olfactory dysfunction
405 in the COVID-19 outbreak. J Investig Allergol Clin Immunol 2020:0.
- 406 30. Bolay H, Gul A, Baykan B. COVID-19 is a Real Headache! Headache 2020.
- 407 31. Frontera J, Mainali S, Fink EL, et al. Global Consortium Study of Neurological
408 Dysfunction in COVID-19 (GCS-NeuroCOVID): Study Design and Rationale. Neurocrit Care
409 2020.