

COVID-19: more than “a little flu”? Insights from the Swiss hospital-based surveillance of Influenza and COVID-19

Georg Marcus Fröhlich¹, Marlieke E. A. De Kraker², Mohammed Abbas², Olivia Keiser², Amaury Thiabaud², Maroussia Roulens², Alexia Cusini³, Domenica Flury⁴, Peter W. Schreiber⁵, Michael Buettcher⁶, Natascia Corti⁷, Danielle Vuichard-Gysin^{8,9}, Nicolas Troillet^{9,10}, Julien Sauser², Roman Gaudenz¹¹, Lauro Damonti¹², Carlo Balmelli^{9,13}, Anne Iten², Andreas Widmer^{9,14}, Stephan Harbarth^{2,9} and Rami Sommerstein^{9,12, 15}

¹ HeartClinic Lucerne, St. Annastrasse 32, 6006 Lucerne, Switzerland and Charité – Universitätsmedizin Berlin, Berlin, Germany

² Geneva University Hospitals and Faculty of Medicine, Infection Control program, Gabrielle-Perret-Gentil⁴, 1205 Geneva, Switzerland

³ Kantonsspital Graubünden, Department for General Medicine, Loestrasse 170, CH-7000 Chur

⁴ Kantonsspital St. Gallen, Rorschacher Strasse 95, CH-9007 St. Gallen, Switzerland

⁵ University Hospital Zurich, Division of Infectious Diseases and Hospital Epidemiology, and University of Zurich, Zurich, Switzerland

⁶ Cantonal Hospital Lucerne, Pediatric Infectious Diseases, Spitalstrasse, 6000 Luzern, Switzerland

⁷ Department for General Medicine, Klinik Hirslanden, Witellikerstrasse 40, 8032 Zürich, Switzerland

⁸ Department for General Medicine, Spital Thurgau, Waldeggstrasse 8A, 8501 Frauenfeld

⁹ Swissnoso, the National Center for Infection Control

¹⁰ Department for Infectious Diseases, Hôpital du Valais, Av. Grand-Champsec 80, 1951 Sion

¹¹ Department for General Medicine, Kantonsspital Nidwalden, Ennetmooserstrasse 19, 6370 Stans

¹² Department of Infectious Diseases, Bern University Hospital, Freiburgstrasse, 3010 Bern

¹³ Ente Ospedaliero Cantonale Ticino, Division of Infection control and Hospital Epidemiology, CH-6500 Bellinzona, Switzerland

¹⁴ Department for Infectious Diseases, University Hospital Basel, Spitalstrasse 21/Petersgraben 4, 4031 Basel, Switzerland

32 ¹⁵ Infectious Diseases Center Central Switzerland, Lucerne, Switzerland

33

34 **Corresponding authors:**

35 PD Dr. med. Georg Fröhlich

36 HeartClinic Lucerne

37 St. Annastrasse 32

38 6006 Lucerne

39 Switzerland

40 georg.froehlich@charite.de

41

42 PD Dr. med. Rami Sommerstein

43 Infectious Diseases Center Central Switzerland

44 Hirslanden Clinic St. Anna

45 St. Annastrasse 32

46 6006 Lucerne

47 Switzerland

48 rami.sommerstein@hirslanden.ch / rami.sommerstein@extern.insel.ch

49

50 **Word count body 2333/3500**

51 **3 Tables, 2 Figures**

52 **Abstract (248/250 words)**

53 **Background**

54 Coronavirus disease 19 (COVID-19) has frequently been colloquially compared to the
55 seasonal influenza, but comparisons based on empirical data are scarce.

56 **Aims**

57 To compare in-hospital outcomes for patients admitted with community-acquired COVID-19
58 to patients with community-acquired influenza in Switzerland.

59 **Methods**

60 Patients >18 years, who were admitted with PCR proven COVID-19 or influenza A/B infection
61 to 14 participating Swiss hospitals were included in a prospective surveillance. Primary and
62 secondary outcomes were the in-hospital mortality and intensive care unit (ICU) admission
63 between influenza and COVID-19 patients. We used Cox regression (cause-specific models,
64 and Fine & Gray subdistribution) to account for time-dependency and competing events
65 with inverse probability weighting to account for confounders.

66 **Results**

67 In 2020, 2843 patients with COVID-19 were included from 14 centers and in years 2018 to
68 2020, 1361 patients with influenza were recruited in 7 centers. Patients with COVID-19 were
69 predominantly male (n=1722, 61% vs. 666 influenza patients, 48%, $p<0.001$) and were
70 younger than influenza patients (median 67 years IQR 54-78 vs. median 74 years IQR 61-84,
71 $p<0.001$). 363 patients (12.8%) died in-hospital with COVID-19 versus 61 (4.4%) patients
72 with influenza ($p<0.001$). The final, adjusted subdistribution Hazard Ratio for mortality was
73 3.01 (95% CI 2.22-4.09, $p<0.001$) for COVID-19 compared to influenza, and 2.44 (95% CI,
74 2.00-3.00, $p<0.001$) for ICU admission.

75 **Conclusion**

76 Even in a national healthcare system with sufficient human and financial resources,
77 community-acquired COVID-19 was associated with worse outcomes compared to
78 community-acquired influenza, as the hazards of in-hospital death and ICU admission were
79 ~3-fold higher.

80 Introduction

81 The clinical impact of the ongoing COVID-19 pandemic is frequently compared to the
82 seasonal influenza¹. This may be due to its pattern to spread worldwide, but also because of
83 a similar initial clinical presentation². It is difficult to distinguish an infection with SARS-CoV-2
84 from an influenza A/B infection based on the clinical presentation. The most common
85 symptoms are cough, fever, dyspnea or headache for both infections.

86 However, COVID-19 appears deleterious in many more aspects than influenza³; intensive
87 care units reaching their limits, reduced number of elective procedures due to limited
88 resources, national lockdowns to slow down the spread, and an unprecedented economic
89 depression.

90 It is estimated, that up to 5000 patients with influenza A/B infection need hospitalization
91 and approximately 1500 patients die each year during the influenza season in Switzerland^{4, 5}.
92 In comparison, COVID-19 has already caused more than 54.000 infections, 5400
93 hospitalisations and 1800 deaths in Switzerland until 2nd October 2020⁶.

94 While influenza is a well investigated infection with clear preventive and treatment
95 strategies, including vaccination and anti-viral drugs, these strategies have not yet been
96 defined for COVID-19. Novel treatment strategies with dexamethasone or remdesivir have
97 been investigated, but are still in the process of approval^{7,8}. At the same time, 195 SARS-
98 CoV-2019 projects have been registered to develop a dedicated SARS-CoV-2019 vaccine⁹. Of
99 these, 9 candidates are currently evaluated in phase III trials⁹.

100 So far, only a few, small scale, retrospective studies directly compared hospital outcomes of
101 COVID-19 and influenza infections^{10, 11}. These studies demonstrated, that in COVID-19 as
102 well as in patients with influenza infection, many patients have underlying co-morbidities
103 that may impact on the course of disease independently^{10, 11}. Due to the small sample size of
104 these previous studies, it has been difficult to draw meaningful conclusions. However, the
105 comparison of COVID-19 and seasonal influenza is important from a public health
106 perspective. Therefore, we aimed to investigate differences in mortality and ICU admission
107 among patients hospitalized for COVID-19 and influenza in Switzerland.

Methods

Hospital-based surveillance of COVID-19/Influenza cases in Switzerland – database characteristics and study population

All data are derived from the prospective database of the *Hospital-based surveillance of COVID-19/Influenza cases in Switzerland*. The database was originally initiated to collect data for all hospitalized influenza cases during the Influenza season 2018/19 by the Institute of Global Health at the University of Geneva, Switzerland. In total, 14 Swiss based hospitals, including all Swiss university hospitals contributed data. Seven centers collected data for all patients who were hospitalized with influenza A/B (start date: 28 October 2018) and 14 centers (including 5 overlaps) for SARS-CoV-2 (start date: 19 February 2020).

A standardized, central, REDCap hosted electronic questionnaire for data collection was set up for data entry in the participating centers^{12, 13}.

Hospital data included patient demographics, main diagnosis, non-invasive or invasive ventilation, cardiovascular, pulmonary or neurologic complications, hospital and ICU admission and discharge date, as well as co-morbidities or death^{12, 13}. Inclusion required a positive PCR based test obtained from any respiratory sample.

Only data for completed hospitalizations of patients >18 years up to July 24th 2020 were included for the analyses. Potential hospital-acquired infections (with PCR diagnosis obtained later than 2 days after admission) were excluded to focus on patients with influenza or COVID-19 present on admission.

The study was approved by the Ethics Committee of the Canton of Geneva, Switzerland. (CCER 2018-00577, 2020-00827). Data collection was also approved by all local Ethics Committees.

Outcome measures

The primary outcome measure was defined as *in-hospital all-cause mortality*. Secondary outcome was admission to the Intensive Care Unit (ICU). Further exploratory end-points included cardiovascular, pulmonary, renal or neurologic complications during hospitalization, length of stay and antibiotic treatment.

Statistical analysis

For the primary and secondary outcome analyses we used cause specific cox hazard models for the outcome of interest, while accounting for competing risks (hospital discharge for hospital mortality; discharge and death before ICU admission for ICU admission) to prevent overestimation of the impact of COVID-19¹⁴. Patients that stayed more than 30 days were right-censored in all models. To adjust for differences in baseline characteristics, inverse probability weighting was applied using clinical and epidemiological factors present at admission significantly associated with influenza versus COVID-19, as determined by univariate logistic regression models¹⁵. We applied truncation at 1st/99th percentile. The method and results of the validation of the weights is provided in Supplementary Table 1. In a second step, subdistribution hazard analysis using the Fine & Gray model were applied to determine the cumulative risk of death or ICU admission associated with COVID-19 versus influenza. The main analyses were adjusted for gender, age, and university hospital as treatment center (available for all cases). In a subgroup analysis we adjusted in addition for body weight and the presence of comorbidities. Since this information was not systematically collected by all centers we included only patients/centers where this info was available (n=2634; 1731 for COVID-19 and 903 for Influenza). There, we also adjusted for weight and presence of comorbidities (cardiovascular, asthma, respiratory, hemato-immunological, renal and neurological; Suppl. Table 2). Further subgroup analysis focused on i) “in-hospital transfers” to the ICU, excluding direct admission to the ICU from the community and ii) community transfers, excluding patients admitted from long term care facilities (LTCF), as during the COVID-19 pandemic fewer LTCF cases may have been transferred to hospital to prevent overburdening of hospital capacities. As the date of outcome was only recorded for mortality and ICU admission, we only calculated the crude incidence for all other outcomes. All analyses were performed in “R (R Core Team, Version 4.0.2)”, using packages *survival*, *ipw*, *CausalGAM* and *cmprsk*¹⁶. Two-tailed tests were performed and p-values <0.05 were considered statistically significant.

Results

Baseline characteristics

In total, 4441 patients were available from the two surveillance databases, of which 217 patients had to be excluded (170 for COVID-19 and 47 for Influenza), because hospital admission or discharge date were missing.

In total, 2843 patients with a confirmed diagnosis of community-acquired COVID-19 were included from 14 acute care hospitals all over Switzerland between 19th February 2020 and 22nd July 2020, including all 5 Swiss university hospitals. This represents 50% of all reported hospitalizations in Switzerland¹⁷ (4569 hospitalizations as of 3rd September 2020). Between 26th October 2018 and 26th March 2020 1331 patients (96.4%) with influenza A and 50 patients (3.6%) with influenza B were included from the influenza database from 7 centers, including 3 university hospitals. The majority of patients with COVID-19 (2476/2843, 87%) as well as those with influenza A/B (1220/1381, 97%) were directly referred to one of the participating hospitals. Several patients were transferred from local district hospitals to specialized facilities (4.9 % of COVID-19 patients and 3.3 % of Influenza patients), 4.8% (n=137) of the COVID-19 patients were transferred from a LTCF compared to 5.2% (n=72) of the influenza patients.

On average, patients with COVID-19 were younger, than patients with influenza A/B infection (median 67 years [IQR 54-78] versus 74 years [IQR 61-84], $p < 0.001$) and were predominantly male (n=1722, 61% vs. 666 influenza patients, 48%, $p < 0.001$), (Table 1).

Outcomes

Table 2 gives an overview of the crude clinical outcomes for patients with COVID-19 or influenza A/B. Crude hospital mortality among COVID-19 patients was almost three times higher than for influenza A/B patients (363, 12.8% in COVID-19 patients and 61 patients, 4.4% with influenza A/B). ICU admission was also more frequent among COVID-19 patients (483, 19.4%) compared to influenza patients (129, 9.8%). Similarly, invasive ventilation was more common in COVID-19 patients (394, 13.9%) compared to influenza patients (66, 4.8%, $p < 0.001$).

The results of the cause-specific cox hazards ratios are available in Table 3. The adjusted subdistribution Hazards Ratio (sdHR) for in-hospital mortality was 3.01 (95% CI 2.22-4.09, $p < 0.001$) for COVID-19 versus influenza, and 2.44 (95% CI, 2.00-3.00, $p < 0.001$) for ICU admission (selected variables and balance of weights in Supplementary Table 1). The cumulative incidence plots of the primary and secondary outcomes are shown in Figures 1 & 2: Most patients were discharged alive within a week, whereby discharge rates were higher for influenza. Most deaths occurred after the first week, and steadily increased up to two weeks after admission, again rates were higher for COVID-19. ICU admission mostly occurred early during stay (Figure 2).

The adjusted sdHR for mortality within the 2634 complete cases was 3.14 (95% CI 2.11-4.68, $p < 0.001$; balance of weights for confounders are shown in Supplementary Table 2). The adjusted sdHR for ICU admission, excluding the $n=302$ patients directly being admitted to the ICU on the day of hospitalization was 5.05 (95% CI, 3.54-7.20, $p < 0.001$; cumulative incidence plot in Suppl. Fig 1). The adjusted sdHR for mortality in the subgroup, excluding $n=209$ direct transfers from LTCF was 3.10 (95% CI, 2.23-4.32; $p < 0.001$).

Discussion

This study directly compared the outcomes of patients hospitalized for influenza A/B or COVID-19 in a prospective nation-wide Swiss surveillance database. After taken account of competing events as well as imbalances between patient groups, community-acquired COVID-19 was associated with a 3-fold increased cumulative risk to die within hospital, compared to an influenza A/B infection. This increase was associated with a higher daily mortality risk as well as an increased length of stay in hospital for COVID-19 patients. Similarly, COVID-19 patients had a more than two-fold increased risk of being transferred to the ICU than influenza patients.

The COVID-19 pandemic poses a tremendous medical, socio-economic and also financial burden for many countries. In the absence of a curative treatment or vaccination, it is impossible to offer easy solutions. At the same time, COVID-19 is sometimes downplayed to be only a „little flu“^{1, 18, 19}. However, the virus characteristics, as well as the course of disease in COVID-19 appear to be more serious than for influenza in several aspects: SARS-CoV-2 appears to be more contagious with a reproductive number of 2-2.5 and is contagious even in patients without symptoms or before symptoms appear². The WHO reports, that 80% of COVID-19 cases are mild, 15% might need hospitalization and 5% of hospitalized patients require ventilation². In comparison, a study from Germany including 34.493 patients with influenza infections demonstrated, that 3.7% of patients needed hospitalization, and of these 5% received invasive ventilation²⁰. In our study, 13.9% of the hospitalized COVID-19 patients needed mechanical ventilation, compared to 4.7% of the influenza patients. These numbers underline the clinical importance of SARS-CoV-2 infections.

In our study, patients with COVID-19 were predominantly male and had a median age of 67 years, while influenza patients were predominantly female and older (median age 74 years). Therefore, the *years of potential life lost* are likely to be higher in COVID-19, which is underlined by the fact that COVID-19 patients were less likely to have significant co-morbidities than influenza patients. At the same time, all their clinical outcomes were worse than those for influenza patients, which persisted even after adjustment for possible confounders. The WHO estimates infection fatality rates of 3-4% for COVID-19, while infection fatality rates are usually much lower in the range of 0.1% for seasonal influenza infections². In our Swiss hospital surveillance, the cumulative incidence of mortality of

hospitalized COVID-19 patients at day 30 was 11.4% compared to 3.6% in hospitalized influenza patients. Previous studies reported mortality rates of hospitalized COVID-19 patients in the range of 4% to 28%^{21, 22}. In addition, up to 2nd October 2020 already 4890 COVID-19 cases have been hospitalized in Switzerland, which has resulted in more than 1800 associated deaths, which is higher than the total number of influenza-associated deaths in previous influenza seasons^{5, 23}.

In the presented Swiss cohort, the cumulative incidence of COVID-19 patients with ICU admission up to day 30 was 19.4%, compared to 9.9% in the influenza group. Interestingly, influenza patients who needed intensive care, were transferred to ICU early after hospital admission. In contrast, the proportion of ICU transfers in COVID-19 patients increased steadily up to 5 days after hospital admission (Figure 2).

Apart from respiratory complications, also neurologic impairment or kidney failure were more common in the COVID-19 cohort. It is unclear whether this finding might be explained by vasculitis and thromboembolic events, which are common in COVID-19²⁴. Surprisingly, there was no difference in cardiovascular complications. While antibiotic therapy was more common in patients with influenza in this Swiss cohort, it remains unclear whether influenza is more often associated with pulmonary bacterial superinfection than COVID-19.

The present study has several limitations. The impact of various treatment strategies could not be analyzed in the presented Swiss cohort. It can be assumed that mortality for the included COVID-19 patients was relatively high, since the majority of the presented cases occurred early during the COVID-19 pandemic, and knowledge about the best supportive treatment strategies has slowly increased over time. For influenza treatment strategies have been more clearly defined, so the current findings may not apply to future COVID-19 cases. Of note, ~1/3 of comorbidity data was missing, because it was not mandatory for the surveillance. As it was missing at random, specific centers did not report this data, we carried out a complete cases analysis for the primary outcome. The point-estimate of the complete case analysis fell within the 95% CI of the main analysis, indicating that absence of this data did not introduce a major bias.

Post-discharge follow-up was not available neither for influenza nor for COVID-19 patients, as such differences in long-term morbidity could not be discerned while it is assumed that these may have a higher incidence among COVID-19 cases. Finally, since no data was

272 available for co-infection with influenza and SARS-CoV 2 this could not be considered.
273 However, a study from Wuhan found that only 4% of COVID-19 patients had a co-infection
274 with influenza,²⁵ and no difference in the course of disease was noted in comparison to
275 COVID-19 alone²⁵.

276 **Conclusion**

277 In this prospective Swiss, multi-center hospital cohort, COVID-19 was associated with a 3-
278 fold higher hazard for hospital mortality and for ICU transfer compared to seasonal influenza
279 A/B infection. This indicates that among hospitalized patients, COVID-19 versus influenza has
280 a larger excess mortality, and COVID-19 cannot be considered as a “little flu” in this cohort

Acknowledgment Section

Acknowledgments

We thank all participating centers for providing their surveillance data. These data were collected in collaboration with the Swiss Federal Office of Public Health. With contributions of the Clinical Research Center, Geneva University Hospitals and Faculty of Medicine, Geneva. The authors want to especially thank Markus Schneemann, Department for General Medicine, Spitäler Schaffhausen, Promenadenstrasse 21, 8200 Schaffhausen, Switzerland; Laurence Senn, Hygiene, prevention et controle de l'infection, Centre Hospitalier Universitaire Vaudoise, Rue du Bugnon 21, CH-1011 Lausanne, Lisa Brockhaus, Department for General Medicine, Hôpital du Jura, Fbg des Capucins 30, 2800 Delémont, and Jonas Marschall, Bern University Hospital for acting as local principal investigators in the hospital-based surveillance.

Author's Role

Conception and Design: GF, RS, MdK, SH, AW, CB, MA. Acquisition of Data: AI, OK, AT, MR, AC, DF, PWS, MB, NC, DVG, NT, RG, LD, CB, AW, AW, SH
Statistics: MdK, RS, SH, JS, MA; Writing of first draft: GF, RS, MdK. Interpretation and Analysis: All authors; RS is guarantor of the paper. All authors have seen, critically revised and approved the manuscript.

Funding statement

Swiss Hospital Surveillance for Influenza and COVID-19 was supported by the Swiss Federal Office of Public Health

Conflict of interest statement

Marlieke E.A. de Kraker was supported by the IMI Joint Undertaking (JU) (grant 115523), Combatting Bacterial Resistance in Europe, with resources including financial contribution from the EU's Seventh Framework Programme and in-kind contributions from companies in the European Federation of Pharmaceutical Industries and Associations (EFPIA). Peter W Schreiber received grant support from the Career funding program "Filling the Gap" of the Medical Faculty of the University of Zurich.

313 **Data sharing statement**

314 Swiss COVID-19/Influenza Hospital Surveillance data access is available from:

315 <https://www.unige.ch/medecine/hospital->

316 [covid/files/4015/9427/6937/CH_SUR_Multicentric_process_final.pdf](https://www.unige.ch/medecine/hospital-covid/files/4015/9427/6937/CH_SUR_Multicentric_process_final.pdf)

Tables.

Table 1. Baseline characteristics of COVID-19 and influenza patients in the Swiss surveillance database

Characteristics	SARS-CoV-2 (n=2843)	Influenza A/B (n=1381)	p-value
Age (years), median (IQR)	67 (54-78)	74 (61-84)	<0.001
Female sex, n (%)	1121 (39.4)	715 (51.8)	<0.001
Admission to university hospital, n (%)	1597 (56.2)	935 (67.7)	<0.001
BMI (kg/m ²), median (IQR)	26.7 (23.7, 30.5) ⁺	25.2 (21.8, 29.4) ⁺⁺	<0.001
Comorbidities, n (%)			
Diabetes mellitus	522 (26.9) *	291 (28.2) **	0.578
Chronic cardiovascular disease	737 (38.0) *	473 (45.9) **	<0.001
Renal impairment	374 (19.3) *	243 (23.6) **	0.011
Chronic pulmonary disease	413 (21.3) *	322 (31.2) **	<0.001
Chronic neurologic impairment	276 (14.2) *	190 (18.4) **	0.002
Haematological disorder	39 (2.0) *	160 (15.5) **	<0.001
Chronic liver disease	114 (5.9) *	57 (5.5) **	0.873

Missing values n (%): ⁺856 (30%), ⁺⁺518 (38%), ^{*}904 (32%), ^{**}350 (25%), as reporting of BMI/comorbidities was not mandatory and omitted by some centers. IQR, interquartile range; BMI, body mass index

Table 2. Unadjusted crude outcomes for patients with microbiologically confirmed community-acquired COVID-19 or influenza infections

	SARS-CoV-2 (n=2843)	Influenza A/B (n=1381)	p-value
In-hospital deaths, n (%)	363 (12.8)	61 (4.4)	<0.001
Admission to the ICU, n (%)	483 (19.4)	129 (9.8)	<0.001
Invasive ventilation, n (%)	394 (13.9)	66 (4.8)	<0.001
Respiratory complications, n (%)	2082 (93.6)*	744 (83.9)**	<0.001
Cardiac disease, n (%)	556 (25.0) *	212 (23.9)**	0.291
Neurologic impairment, n (%)	394 (17.7)*	82 (9.2)**	<0.001
Kidney failure, n (%)	601 (27.0)*	149 (16.8)**	<0.001
Length of hospital stay, median (IQR)	8 (5-16)	7 (4-13)	<0.001
Any antibiotic treatment, n (%)	1539 (61.7) ⁺	862 (65.7) ⁺⁺	<0.001

Missing values n (%): *618 (22%), **494 (36%), ⁺349 (12), ⁺⁺69 (5), as reporting of these complications was not mandatory and omitted by some centers. ICU, intensive care unit; IQR, interquartile range.

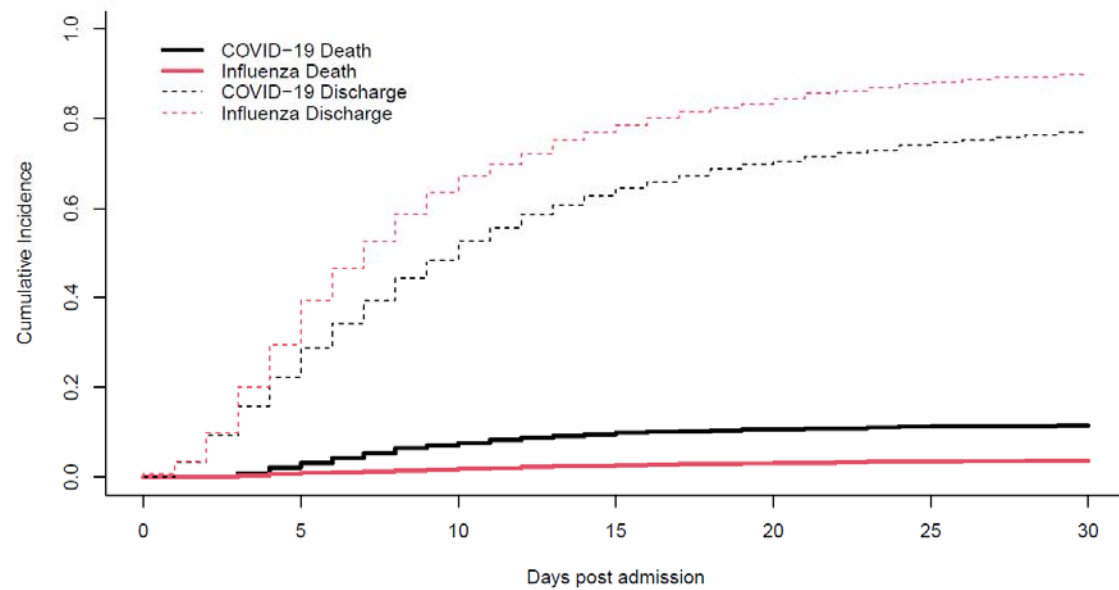
330 **Table 3. Adjusted hazard ratios of primary and secondary outcomes (COVID-19 vs.**
 331 **influenza) by weighted cause-specific (CS) Cox models. Patients with hospital duration >30**
 332 **days were right-censored at day 30.**

	CS Hazard ratio	95% Confidence interval	p-value
Primary outcome analysis			
Hospital mortality	2.58	1.90-3.50	<0.001
Hospital discharge	0.78	0.72-0.84	<0.001
Secondary outcome analysis			
ICU admission	2.46	2.00-3.01	<0.001
Death before ICU admission	3.93	2.61-5.95	<0.001
Discharge alive before ICU admission	0.95	0.87-1.03	0.181

333

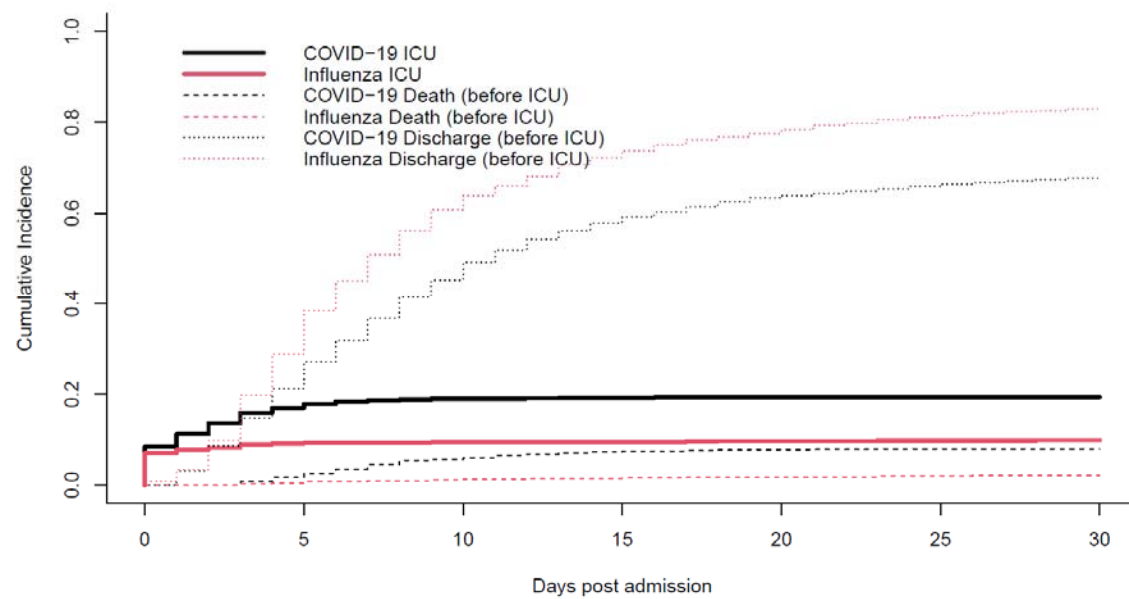
334 **Figures.**

335 **Figure 1. Cumulative incidence plot. Mortality with discharge as competing risk, by disease**
 336 **status (COVID-19 versus influenza)**



337

338 **Figure 2. Cumulative incidence plot. ICU admission with discharge and death before ICU**
 339 **admission as competing risk, by disease status (COVID-19 versus influenza)**



340

Supplementary Materials

Supplementary Table 1: Balance check of inverse probability weights

We used balance.IPW from the CausalGAM package (Ref R): This function calculates weighted means of covariates and then examines the differences in the weighted means across influenza and COVID-19 cases as a diagnostic for covariate balance for inverse probability weighting.

The standardized mean differences between all variables in the dataset are reported along with a z-statistics for these standardized differences, whereby z-statistics closer to 0 imply better univariate mean balance.

The columns are (from left to right) the observed mean of the covariate among the COVID-19 patients, the observed mean of the covariate among the influenza patients, the weighted mean of the covariate among the COVID-19 patients, the weighted mean of the covariate among the influenza patients, the weighted mean difference, and the z-statistic for the difference.

The formula (logistic regression with logit-link) used for calculation of weights was:

Virus_type ~ Age + Gender + Admission_to_University Hospital

	obs.mean. C	obs.mean. I	w.mean.C	w.mean.I	w.mean.diff	z
Age	65.11	70.41	66.76	66.43	0.33	2.252
Gender (% female)	0.39	0.52	0.44	0.45	-0.01	-3.717
Admission to University hospital (%)	0.56	0.68	0.60	0.60	-0.00	-0.689

Supplementary Table 2: Balance check of inverse probability weights for complete case analysis

The formula (logistic regression with logit-link) was:

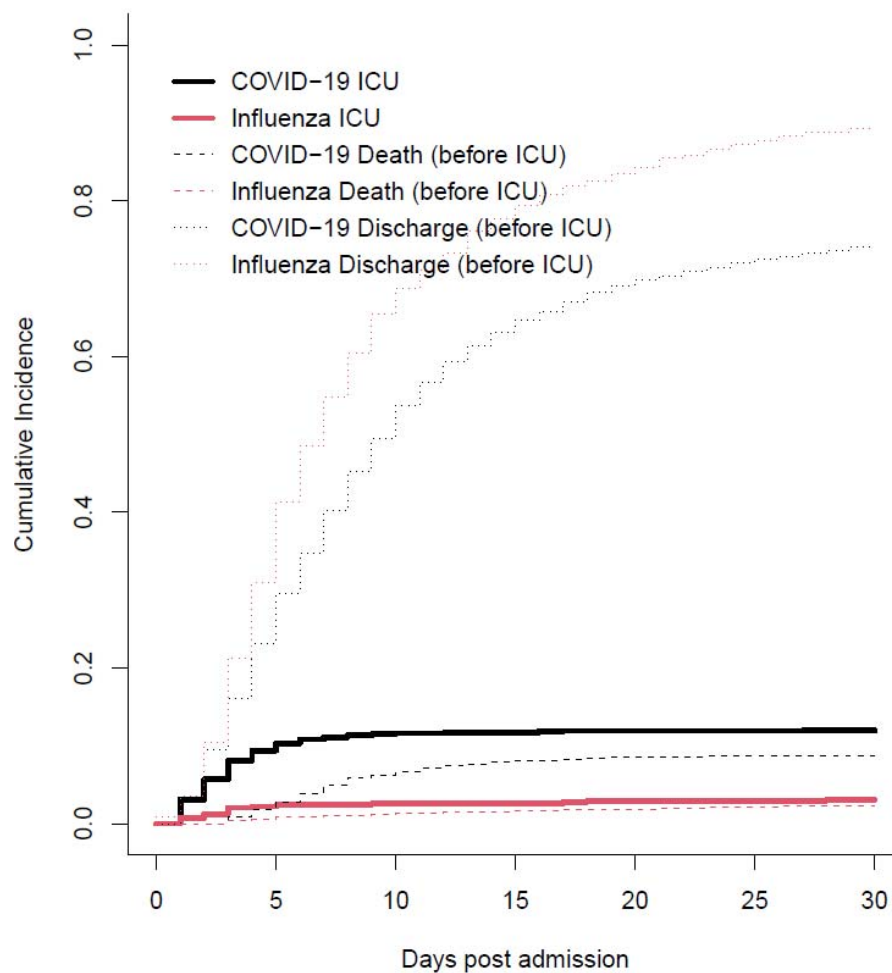
Virus_type ~ Age + Gender + Admission_to_University Hospital + weight + com_cardiovascular + comorbidity_asthma + comorbidity_neuro_impair + comorbidity_renal + comorbidity_hemato_immuno

The table contains the same information as explained above (Supplementary Table 1).

	obs.mean.Covid-19	obs.mean.Influenza	w.mean.Covid-19	w.mean.Influenza	w.mean.diff	z
Age	68.957	73.196	70.788	70.667	0.122	0.1
Gender (female)	0.406	0.494	0.439	0.445	-0.006	-0.0
Admission to university hospital	0.515	0.681	0.573	0.577	-0.004	-0.0
Weight	79.253	73.37	77.023	77.457	-0.434	-1.0
Comorbidities (Yes/No)						
Cardiovascular	0.392	0.464	0.423	0.423	0	0.0
Asthma	0.091	0.134	0.108	0.109	-0.001	-0.0
Neurological impairments	0.139	0.171	0.149	0.16	-0.011	-0.3
Renal	0.201	0.252	0.228	0.223	0.005	0.0
Hematological/immunological	0.021	0.159	0.074	0.065	0.009	0.1

Supplementary Figure 1

Cumulative incidence plot. ICU admission with discharge and death before ICU admission as competing risk, by disease status (COVID-19 versus influenza); Patients directly admitted to the ICU from the community were excluded for this subgroup analysis.



References

1. Molina B. Facebook pulls Trump post comparing COVID-19 to flu; Twitter adds warning. USA Today 2020.
2. WHO. Q&A: Influenza and COVID-19 - similarities and differences. 2020.
3. Bank W. The Global Economic Outlook During the COVID-19 Pandemic: A Changed World. 2020.
4. Gesundheit Bf. Saisonale Grippe 2011/2012: Zeit, sich impfen zu lassen. BAG Bulletin. 2011;**42**:899–901.
5. BAG. Situationsbericht zur epidemiologischen Lage in der Schweiz. 2020.
6. University JH. Coronavirus map. 2020.
7. Grein J, Ohmagari N, Shin D, Diaz G, Asperges E, Castagna A, Feldt T, Green G, Green ML, Lescure FX, Nicastri E, Oda R, Yo K, Quiros-Roldan E, Studemeister A, Redinski J, Ahmed S, Bernett J, Chelliah D, Chen D, Chihara S, Cohen SH, Cunningham J, D'Arminio Monforte A, Ismail S, Kato H, Lapadula G, L'Her E, Maeno T, Majumder S, Massari M, Mora-Rillo M, Mutoh Y, Nguyen D, Verweij E, Zoufaly A, Osinusi AO, DeZure A, Zhao Y, Zhong L, Chokkalingam A, Elboudwarej E, Telep L, Timbs L, Henne I, Sellers S, Cao H, Tan SK, Winterbourne L, Desai P, Mera R, Gaggar A, Myers RP, Brainard DM, Childs R, Flanigan T. Compassionate Use of Remdesivir for Patients with Severe Covid-19. N Engl J Med 2020;**382**(24):2327-2336.
8. Group RC, Horby P, Lim WS, Emberson JR, Mafham M, Bell JL, Linsell L, Staplin N, Brightling C, Ustianowski A, Elmahi E, Prudon B, Green C, Felton T, Chadwick D, Rege K, Fegan C, Chappell LC, Faust SN, Jaki T, Jeffery K, Montgomery A, Rowan K, Juszczak E, Baillie JK, Haynes R, Landray MJ. Dexamethasone in Hospitalized Patients with Covid-19 - Preliminary Report. N Engl J Med 2020.
9. Pharmaunternehmen VdF. Vaccines to protect against Covid-19, the new coronavirus infection. 2020.
10. Faury H, Courboules C, Payen M, Jary A, Hausfater P, Luyt C, Dres M, Pourcher V, Abdi B, Wiriden M, Calvez V, Marcelin AG, Boutolleau D, Burrel S. Medical features of COVID-19 and influenza infection: A comparative study in Paris, France. J Infect 2020.
11. Zayet S, Kadiane-Oussou NJ, Lepiller Q, Zahra H, Royer PY, Toko L, Gendrin V, Klopfenstein T. Clinical features of COVID-19 and influenza: a comparative study on Nord Franche-Comte cluster. Microbes Infect 2020.
12. Geneve Ud. Hospital based surveillance of influenza in Switzerland - a pilot study. 2018.
13. Geneve Ud. Hospital based surveillance of Covid-19 in Switzerland. 2019.
14. Lau B, Cole SR, Gange SJ. Competing risk regression models for epidemiologic data. Am J Epidemiol 2009;**170**(2):244-56.

15. Samore MH, Shen S, Greene T, Stoddard G, Sauer B, Shinogle J, Nebeker J, Harbarth S. A simulation-based evaluation of methods to estimate the impact of an adverse event on hospital length of stay. *Med Care* 2007;**45**(10 Supl 2):S108-15.
16. Team RC. A language and environment for statistical computing. R Foundation for Statistical Computing, Vienna, Austria. 2017.
17. statista.com. Number of hospitalizations due to the coronavirus (COVID-19) in Switzerland in 2020. 2020.
18. S K. Is It Like the Flu? Is It a Major Threat? Trump's Changing Coronavirus Message. *New York Times* 2020.
19. CNN. Bolsonaro calls coronavirus a 'little flu.'. 2020.
20. von der Beck D, Seeger W, Herold S, Gunther A, Loh B. Characteristics and outcomes of a cohort hospitalized for pandemic and seasonal influenza in Germany based on nationwide inpatient data. *PLoS One* 2017;**12**(7):e0180920.
21. Wang D, Hu B, Hu C, Zhu F, Liu X, Zhang J, Wang B, Xiang H, Cheng Z, Xiong Y, Zhao Y, Li Y, Wang X, Peng Z. Clinical Characteristics of 138 Hospitalized Patients With 2019 Novel Coronavirus-Infected Pneumonia in Wuhan, China. *JAMA* 2020.
22. Zhou F, Yu T, Du R, Fan G, Liu Y, Liu Z, Xiang J, Wang Y, Song B, Gu X, Guan L, Wei Y, Li H, Wu X, Xu J, Tu S, Zhang Y, Chen H, Cao B. Clinical course and risk factors for mortality of adult inpatients with COVID-19 in Wuhan, China: a retrospective cohort study. *Lancet* 2020;**395**(10229):1054-1062.
23. Schweiz BfS. Mortality and cause of death. 2020.
24. Mondal S, Quintili AL, Karamchandani K, Bose S. Thromboembolic disease in COVID-19 patients: A brief narrative review. *J Intensive Care* 2020;**8**:70.
25. Ding Q, Lu P, Fan Y, Xia Y, Liu M. The clinical characteristics of pneumonia patients coinfectd with 2019 novel coronavirus and influenza virus in Wuhan, China. *J Med Virol* 2020.

