

Polygenic regulation of PTSD severity and outcomes among World Trade Center responders

Laura M. Huckins¹⁻⁶, Jessica S. Johnson¹, Leo Cancelmo², Olivia Diab², Jamie Schaffer², Leah Cahn², Cindy Aaronson², Sarah R Horn², Clyde Schechter⁷, Shelby Marchese¹, Linda M Bierer^{2,8}, Iouri Makotkine^{2,8}, Frank Desarnaud^{2,8}, Janine D Flory^{2,8}, Michael Crane⁹, Jacqueline M. Moline¹⁰, Iris G. Udasin¹¹, Denise J. Harrison¹², Panos Roussos^{1-4,6}, Dennis S. Charney^{2,13,14}, Guia Guffanti^{15,16}, Karestan C Koenen¹⁷⁻¹⁹, Rachel Yehuda^{2,8}, Steven M. Southwick^{20,21}, Robert H. Pietrzak^{20,21}, Adriana Feder²

¹ Pamela Sklar Division of Psychiatric Genomics, Icahn School of Medicine at Mount Sinai, New York, NY 10029, USA

² Department of Psychiatry, Icahn School of Medicine at Mount Sinai, New York, NY 10029, USA

³ Department of Genetics and Genomic Sciences, Icahn School of Medicine at Mount Sinai, New York, NY 10029, USA

⁴ Icahn Institute for Genomics and Multiscale Biology, Icahn School of Medicine at Mount Sinai, New York, NY 10029, USA

⁵ Seaver Autism Center for Research and Treatment, Icahn School of Medicine at Mount Sinai, New York, NY 10029, USA

⁶ Mental Illness Research, Education and Clinical Centers, James J. Peters Department of Veterans Affairs Medical Center, Bronx, NY 14068, USA

⁷ Department of Family and Social Medicine, Albert Einstein College of Medicine of Yeshiva University, Bronx, NY, USA

24 ⁸ Department of Psychiatry, James J. Peters Veterans Affairs Medical Center, Bronx, New York,
25 USA

26 ⁹ Department of Environmental Medicine and Public Health, Icahn School of Medicine at Mount
27 Sinai, New York, NY, USA

28 ¹⁰ Department of Occupational Medicine, Epidemiology and Prevention, Zucker School of
29 Medicine at Hofstra/Northwell, Great Neck, NY, USA

30 ¹¹ Environmental and Occupational Health Sciences Institute, School of Public Health, Rutgers
31 University, Piscataway, NJ, USA

32 ¹² Department of Medicine, Division of Pulmonary Critical Care and Sleep Medicine, NYU
33 School of Medicine, New York, NY, USA

34 ¹³ Department of Neuroscience, Icahn School of Medicine at Mount Sinai, New York, New
35 York, USA.

36 ¹⁴ Department of Pharmacological Sciences, Icahn School of Medicine at Mount Sinai, New
37 York, New York, USA.

38 ¹⁵ Harvard Medical School, Department of Psychiatry, Boston, MA, USA.

39 ¹⁶ McLean Hospital, Belmont, MA, USA.

40 ¹⁷ Massachusetts General Hospital, Psychiatric and Neurodevelopmental Genetics Unit (PNGU),
41 Boston, MA, USA.

42 ¹⁸ Broad Institute of MIT and Harvard, Stanley Center for Psychiatric Research, Cambridge, MA,
43 USA.

44 ¹⁹ Harvard School of Public Health, Department of Epidemiology, Boston, MA, USA.

45 ²⁰ Department of Psychiatry, Yale University School of Medicine, New Haven, CT, USA

²¹ Department of Veterans Affairs National Center for Posttraumatic Stress Disorder, VA
Connecticut Healthcare System, West Haven, CT, USA

Abstract

Post-traumatic stress disorder (PTSD) is a debilitating psychiatric condition occurring in individuals exposed to trauma. The study of PTSD is complicated by highly heterogeneous presentations and experiences of trauma.

Here, we studied genetic correlates of PTSD and resilience among a group of responders to the World Trade Center (WTC) 9/11/2001 attacks. This cohort represents a unique opportunity to study genetic risk factors for PTSD, and resilience, following a single, shared, well-documented trauma. We calculated polygenic risk scores associated with PTSD among these 375 individuals, and demonstrated a significant genetic association with social cognition traits, brain volumetric phenotypes, and PTSD-GWAS-derived PRS.

Our results demonstrate significant genetic regulation of PTSD severity (CAPS scores) and chronicity (past-month CAPS). PRS derived from GWAS of ADHD, ASD, and brain imaging phenotypes (Amygdala and Putamen volume) were associated with multiple PTSD traits in this study. Interestingly, we find greater genetic contribution to PTSD among cases compared to our full cohort. In addition, we tested for associations between exposures to traumatic stressors, including WTC-related exposures, childhood trauma, and traumatic life events since 9/11. Together, polygenic risk and exposures to traumatic stress explain ~45% of variance in lifetime CAPS among the full cohort ($R^2=0.454$), and ~48% of variance in past-month CAPS ($R^2=0.480$).

69 These participants represent a highly vulnerable population, with exposures to severe trauma
70 during 9/11 and the following days. Identifying individuals at heightened risk for PTSD, or who
71 may be suited to particular therapies, is of special importance and relevance in this group. In
72 particular, the identification of MRI imaging phenotypes indicates that coupling of neuroimaging
73 with genetic risk score calculations may predict PTSD outcomes.

74

75

Introduction

Posttraumatic stress disorder (PTSD) is a chronic and disabling condition, triggered by exposure to actual or threatened death, serious injury, or sexual violence, and characterized by recurrent intrusive symptoms, avoidance of trauma reminders, negative mood and cognitions, and heightened arousal symptoms^{1,2}. By definition, PTSD occurs in response to trauma. However, while trauma exposure is ubiquitous, the large majority of individuals exposed to trauma will not develop PTSD; moreover, many will not develop PTSD even after multiple, repeated or severe traumas³⁻⁵. Understanding the biological factors contributing to vulnerability to PTSD will be key in developing effective treatments and therapies for the disorder, and in identifying individuals who may be at high risk of developing the disorder. In line with this goal, twin studies have established substantial genetic aetiology of PTSD, with heritability estimates around 30%⁵⁻⁹, although these vary substantially according to gender and trauma type^{5,7,9-11}.

Significant progress in elucidating the genetic aetiology of PTSD has been made through the advent of large-scale genome-wide association studies (GWAS). Collaborative efforts from the PTSD working group of the Psychiatric Genomics Consortium (PGC) established single nucleotide polymorphism (SNP)-heritability at 5-20%; again, with heritability estimates varying by sex⁶. Progress in identifying significant GWAS loci and other biomarkers is likely hampered by heterogeneity within our studies. Traditionally, GWAS meta-analyses maximize power by meta-analyzing across multiple cohorts. However, mounting evidence in PTSD points to distinct symptomatology, disease severity, and genetic aetiology according to trauma type. For example, PTSD prevalence differs significantly according to trauma type^{1,3,9,12-14}.

Further, PTSD-GWAS that meta-analyze multiple cohorts and trauma types have not yet yielded genome-wide significant associations, and our recent transcriptomic imputation analysis of PGC-PTSD GWAS data revealed significant gene-tissue associations only when stratifying by index trauma (ie. Military vs. civilian)⁹.

Deeper insights into PTSD biology may be gained by leveraging small but deeply phenotyped cohorts. In particular, identifying single, quantifiable traumatic events is rare. Here, we have access to a unique sample of 371 World Trade Center (WTC) rescue, recovery and clean-up workers (“responders”), recruited on average 13.5 years after 9/11/2001, ranging in PTSD symptom severity from no/low symptom to severe PTSD. The worker response to the WTC disaster was unprecedented in scope, involving tens of thousands of traditional and non-traditional responders in rescue, recovery, and clean-up efforts. PTSD arising in response to equally unprecedented traumatic exposures remains highly prevalent (10-22%) and persistent in WTC responders in the second decade following 9/11¹⁵⁻¹⁷.

Capitalizing on the existence of a unique cohort of WTC responders composed of workers of diverse backgrounds and training, all exposed to the aftermath of the 9/11 terrorist attacks, the present study aimed to fill a major gap in our understanding of the development and chronicity of this disabling condition by conducting genome-wide genetic and gene expression profiling in a representative sample of WTC responders characterized in depth with in-person psychiatric, medical, and psychosocial assessments. These individuals represent a unique opportunity to study genetic risk factors for PTSD following a shared and well-documented trauma.

Although few genome-wide associations have been identified for PTSD to date, genetic aetiology and polygenicity of the disorder is well established; that is, small, additive effects across the genome combine to increase risk for PTSD development after trauma exposure. Here, we test whether polygenic risk scores derived from GWAS of psychiatric disorders and traits, and magnetic resonance imaging (MRI) phenotypes predict PTSD diagnosis, severity and chronicity within our cohort. First, we test whether polygenic risk predicts WTC-related PTSD severity, using the highest recorded score on the lifetime Clinician Administered PTSD Scale (CAPS) as a proxy for severity, among the full sample, and among cases only. Next, we test whether past-month CAPS score was also genetically regulated among our cohort. Given the substantial time elapsed (on average 13.5 years) since the initial trauma, this score serves as a measure of WTC-related PTSD chronicity.

Aims:

To leverage results from genome-wide association studies (GWAS) conducted in very large samples to examine the association between polygenic risk scores (PRS) and PTSD symptom severity in this sample of WTC responders, all exposed to the aftermath of the 9/11 attacks but ranging in WTC exposure severity and clinical outcomes –from no/minimal symptom levels to severe WTC-related PTSD.

To delineate the molecular basis of individual differences in stress responses in this sample of WTC responders.

Methods

Participants

The WTC Health Program (WTC-HP) is a regional consortium of five clinical centers established in the greater New York City area by the Centers of Disease Control and Prevention in 2002, with the goal of providing health monitoring and treatment to WTC responders, comprising the WTC-HP General Responder Cohort¹⁸. We recruited participants from the WTC-HP Responder Cohort who had completed at least three periodic health monitoring visits at one of the four WTC-HP clinical centers participating in this study – Mount Sinai Medical Center, New York University, Northwell Health, and Rutgers/The State University of New Jersey – and who had provided signed consent to be contacted for research studies. Stratified random sampling was employed to ensure selection of WTC responders spanning the full range of WTC-related PTSD symptom severity, from no/minimal symptoms to severe/chronic PTSD symptom levels on the PTSD Checklist – Specific Version (PCL-S)¹⁹ completed during periodic health monitoring visits to the WTC-HP. Individuals with a lifetime history of chronic psychotic disorder or bipolar disorder type I, substance abuse/dependence or alcohol dependence over the prior three months, current pregnancy, acute medical illness or exacerbation of chronic medical illness, history of significant head injury or cerebrovascular accident, changes in medications or medication dosages over the prior month, or who were taking oral or regularly injected steroid medications were excluded from the study.

The study, conducted between April 2013 and September 2017, was approved by the Institutional Review Board of the Icahn School of Medicine at Mount Sinai, and all participants provided written informed consent. A total of 471 WTC responders completed in-person clinical

assessments, yielding a final sample of 371 participants who met study eligibility criteria and completed study procedures. Mean age (SD) was 54.2 (8.4) years, 82.5% were male. The sample was composed of 41.2% police responders and 58.8% non-traditional responders (e.g., construction workers).

Assessments

Data on 10 WTC-related exposures (e.g., exposed to human remains, received treatment for an illness/injury during WTC recovery work) was obtained from interviews and self-report questionnaires completed by participants during their first health-monitoring visit to the WTC-HP, an average of 4.3 (SD=2.7) years following 9/11/2001. In-person clinical assessments were conducted an average of 13.5 (SD=1.3) years following 9/11/2011. Trained Masters- or PhD-level clinical interviewers administered the Structured Clinical Interview for DSM-IV²⁰ (SCID) to assess current and lifetime Axis-I psychiatric diagnoses, and the Clinician-Administered PTSD Scale²¹ (CAPS), lifetime and past-month versions, to assess lifetime and past-month WTC-related PTSD diagnostic status and WTC-related PTSD symptom severity. Lifetime and past-month PTSD diagnosis was defined as meeting DSM-IV criteria for WTC-related PTSD and a total score ≥ 40 on the lifetime and past-month CAPS, respectively.

On the same day as the clinical assessment, participants also completed the Childhood Trauma Questionnaire²² (CTQ), assessing physical, sexual, and emotional abuse, and physical and emotional neglect experienced in childhood; the Traumatic Life Events Questionnaire²³ (TLEQ), assessing lifetime exposure to a range of traumatic events (e.g, crime, natural disaster, assault); a questionnaire asking which of 15 stressful life events they had experienced since 9/11/2011 (e.g., “lost a job/laid off/lost income”, “divorced from spouse”, “had debt trouble”), modified from the

Diagnostic Interview Schedule Disaster Supplement²⁴; and a health questionnaire asking which medical conditions they had ever been diagnosed with²⁵, modified to add common WTC-related conditions (asthma or chronic respiratory condition, chronic rhinitis or sinusitis, sleep apnea, or acid reflux). Participants additionally completed a history and physical examination conducted by a licensed nurse practitioner, as well as routine laboratory testing, to rule out acute medical illness or exacerbation of chronic medical illness.

WTC Exposure Index
Arrived at the WTC site between 9/11-9/13
Was caught in the dust cloud
Worked at or adjacent to the collapse site during September 2001
Worked greater than the median number of hours at the WTC site
Exposed to human remains
Participated in search and rescue
Experienced death of a colleague, friend, or family member on 9/11
Knows someone who was injured on 9/11
Received treatment for an illness or injury during WTC recovery work
Slept at the site in September or October 2001

215

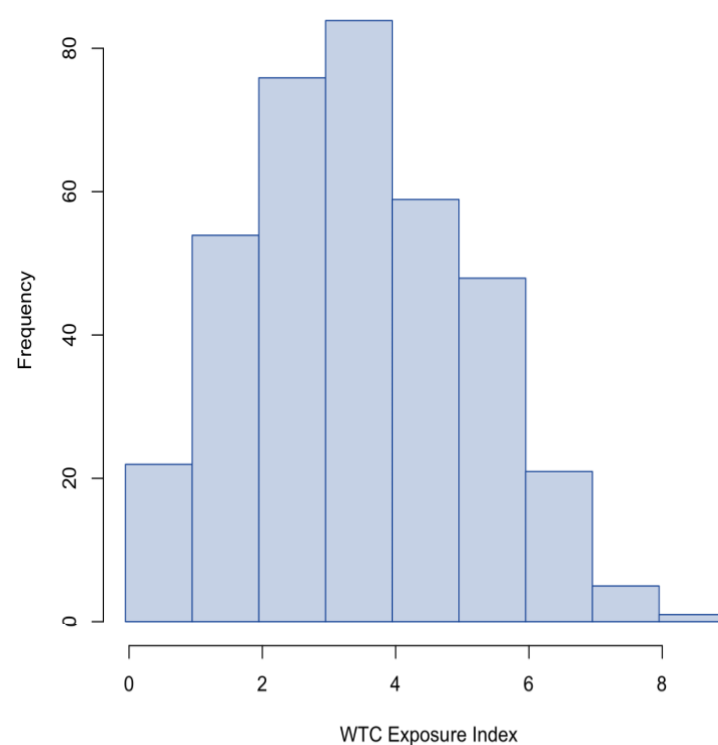


Figure 1: World Trade Centre Exposures were quantified using the World Trade Center Exposure Index. (A) WTC Exposure Index Factors. (B) Distribution of total WTC Exposure Scores.

219

Blood Sample Collection and Genotyping

Participants underwent collection of fasting blood samples between 8:00 and 9:00 am. Genomic DNA was purified from an aliquot of 200 microliters of whole blood collected in PAXgene blood DNA tubes (Qiagen, Germantown, MD, USA) using a QuickGene DNA whole blood Kit S (Kurabo, Osaka, Japan) followed by an automated DNA extraction using a QuickGene-810 instrument according to the manufacturer instructions (Kurabo, Osaka, Japan). Genomic DNA quality and concentration were estimated using a NanoDrop 200c spectrophotometer according to the manufacturer instructions (Thermo Fisher Scientific, Waltham, MA, USA). Samples with an optical density ratio 260/280 superior or equal to 1.8 passed the quality control.

Genotyping Quality Control

Samples were genotyped in two batches; (195 in the first, and 186 in the second); the following QC steps were applied separately to each batch. Standard genotyping quality control metrics were applied using plink^{26,27} to remove multi-allelic variants, indels, ambiguous SNPs (c/g or a/t); variants failing Hardy-Weinberg Equilibrium expectations ($HWE < 1e-06$); variants with $MAF < 0.1\%$; individuals with high missingness (> 0.05) or genotypes with low call-rate (> 0.05). Following both individual- and variant-level QC, genotypes were imputed using the Michigan Imputation server²⁸. Genotypes were imputed using the 1000 Genomes Phase 3 (Version 5) reference panel^{29,30}, and standard imputation QC performed according to Michigan Imputation server guidelines²⁸. Following imputation, a final variant- level QC was performed to remove

variants with low imputation quality scores ($R < 0.2$), and to repeat previous HWE, MAF, call-rate and missingness filters.

Following genotype-level QC, we merged the two batches, retained overlapping variants only, and repeated our MAF, HWE, call-rate and genotyping filters described previously on the full, merged cohort. In total, we retained 381 individuals and 10,858,359 variants.

We computed relatedness and genotype-derived ancestry using plink^{26,27}. We identified one pair of samples with high relatedness ($\text{pihat} = 0.55$), and removed one of the pair at random. In total, 380 individuals remained following our genotype and sample level QC steps.

Genetic Regulation of PTSD

We calculated polygenic risk scores for psychiatric diagnoses, personality traits, and brain-volume related phenotypes using 27 publicly available GWAS summary statistics (**Table 1**). For each trait, we tested for association with (1) lifetime highest CAPS score and (2) past-month CAPS score, in both the full cohort, and among cases only using PRSice^{31,32}, including all significant genotype-derived principle components to control for confounding due to ancestry. We estimated the amount of phenotypic variance explained by the GWAS-derived polygenic risk score alone using a nested approach (equation 1).

Equation 1: Estimating variance explained by polygenic risk

$$R_{Full}^2: \text{Phenotype} \sim PRS + PC_1 + \dots + PC_{20}$$

$$R_{Baseline}^2: \text{Phenotype} \sim PC_1 + \dots + PC_{20}$$

$$R_{PRS}^2 = R_{Full}^2 - R_{Baseline}^2$$

For all significant PRS, we tested for interaction effects between polygenic risk and sex. Given the high degree of shared genetic heritability between psychiatric diagnoses, traits, and brain-volume related phenotypes, modelling these PRS separately likely introduces redundancy, and may over-estimate the amount of phenotypic variance explained by polygenic risk scores. Therefore, we next constructed a joint model, including all PRS reaching $p < 0.1$ in our individual models. We calculated PRS for each trait at ten standard p-value thresholds (0.0001, 0.001, 0.01, 0.05, 0.1, 0.2, 0.3, 0.4, 0.5, 1), and fit a joint model at each threshold. We adjusted for genotype-derived principal components using a nested approach as previously.

Accounting for Trauma Exposure

The samples included in this study have deep phenotyping information, including extensive detail of experiences of exposures during 9/11 and its aftermath. These exposures variables may provide vital insights into modifying effects of environment on genetic predisposition. First, we tested whether trauma exposures significantly predicted PTSD outcome. Specifically, we tested for association between WTC-Exposure Index, CTQ and TLEQ overall scores, and stressful life events since 9/11 with (i) Lifetime PTSD and (ii) past-month PTSD. We tested for each exposure individually, including sex, age, and the first 20 genotype-derived principal components as covariates. In addition, we tested for significant interaction effects between responder type (police vs. non-traditional responder) and WTC-Exposure Index factors.

We estimated total variance in CAPS explained by each trauma type using a nested model (equation 2).

Baseline factors (sex, age, principal components) predicted ~6% of variance in CAPS among the full cohort ($R^2 = 0.06277$, 0.05215 in lifetime and past-month, respectively).

Equation 2: Estimating total variance explained by traumatic exposures

$$R_{Full}^2: Phenotype \sim Trauma + PC_1 + \dots + PC_{20} + sex + age$$

$$R_{Baseline}^2: Phenotype \sim PC_1 + \dots + PC_{20} + sex + age$$

$$R_{Trauma}^2 = R_{Full}^2 - R_{Baseline}^2$$

Similar to our polygenic risk score model, we expect some overlap between these different exposures and factors; therefore, we fit a joint model to identify factors most significantly predicting CAPS. Finally, we fit a joint model including all traumatic exposures and PRS in order to predict (i) highest lifetime and (ii) past-month CAPS.

Results

Characterization of PTSD among 375 WTC responders

We recruited 375 WTC responders; all responders completed the Clinician-Administered PTSD Scale, childhood trauma questionnaire (CTQ), WTC exposure index. A total of 112 (29.9%) responders met diagnostic criteria for lifetime WTC-related PTSD (**Figure 2A**; 71 non-traditional and 41 police responders). Forty-three (11.5%) met diagnostic criteria for past-month PTSD (**Figure 2B**; 33 non-traditional and 10 police responders).

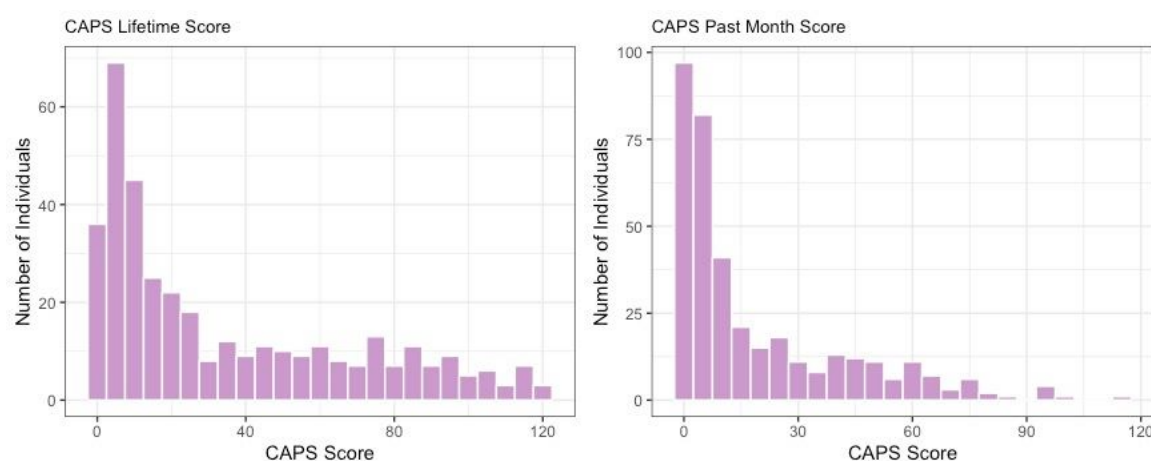


Figure 2: Characterization of PTSD among 371 WTC responders.

A) Highest recorded lifetime CAPS score; B) Past-month CAPS score

Polygenic Risk Scores predict PTSD outcomes and severity among WTC responders

We performed PRS analyses using 28 GWAS for psychiatric disease, traits, and MRI-derived brain measures, and tested ability to predict lifetime and past-month CAPS. Risk scores derived from GWAS of Putamen and Amygdala volume, ADHD, anxiety, ASD, smoking behavior (“ever smoker”), self-defined wellbeing, and bipolar disorder all significantly predicted lifetime CAPS scores ($R^2 > 0.01$; $p < 0.047$; **Table 1**); the same traits (except self-defined wellbeing and

smoking) also predicted past-month CAPS ($R^2 > 0.012$; $p < 0.030$; **Table 1**). In addition, PTSD-PRS derived from the latest PGC-PTSD GWAS significantly predicted past-month CAPS ($R^2 = 0.017$, $p = 0.012$).

Next, we repeated our analysis including only PTSD ‘cases’: i.e., individuals meeting the CAPS and PTSD diagnosis requirements described in our methods section. We identified significant associations between lifetime highest CAPS and PRS derived from GWAS of anxiety, mean Putamen and Amygdala Volume, smoking behaviour and schizophrenia ($R^2 > 0.042$; $p < 0.045$), implying that these PRS predict PTSD severity (assuming CAPS is an appropriate proxy of severity) (**Table 2**). In addition, PRS from GWAS of schizophrenia, loneliness, mean putamen and amygdala volume, smoking behaviour, and ASD all predicted past month CAPS among cases ($R^2 > 0.044$; $p < 0.033$).

Finally, we compared the proportion of variance explained by polygenic risk scores in the full cohort vs. cases only, and find that substantially more variance is explained among cases (**Figure 3**), implying that PTSD severity is more significantly genetically regulated than PTSD case/control status.

Polygenic Risk Scores jointly explain significant variance in CAPS

Given the substantial genetic correlation between these GWAS traits, it is highly likely that modelling each PRS independently introduces some duplication and redundancy, and an over-estimate of total variance explained. Therefore, we fit a joint PRS model, including all GWAS-derived PRS reaching $p < 0.1$ in the individual analyses simultaneously. The final model

347 explained 6.7% of variance in highest lifetime CAPS among our full cohort ($R^2=0.0670$; most
 348 significant PRS: Mean Amygdala Volume, ADHD, self-defined wellbeing; **Table 3**), and 6.5%
 349 of variance in highest past-month CAPS ($R^2=0.0654$; most significant PRS: Mean Putamen
 350 Volume, Anxiety). Repeating this analysis among cases only revealed a significant increase in
 351 proportion of variance explained (Lifetime-CAPS $R^2=0.211$; most significant PRS: anxiety,
 352 alcohol dependence; Past-month CAPS $R^2=0.157$ most significant PRS: Mean Putamen Volume,
 353 Ever Smoker), implying that severity of PTSD may be more significantly genetically regulated
 354 than PTSD case/control status.

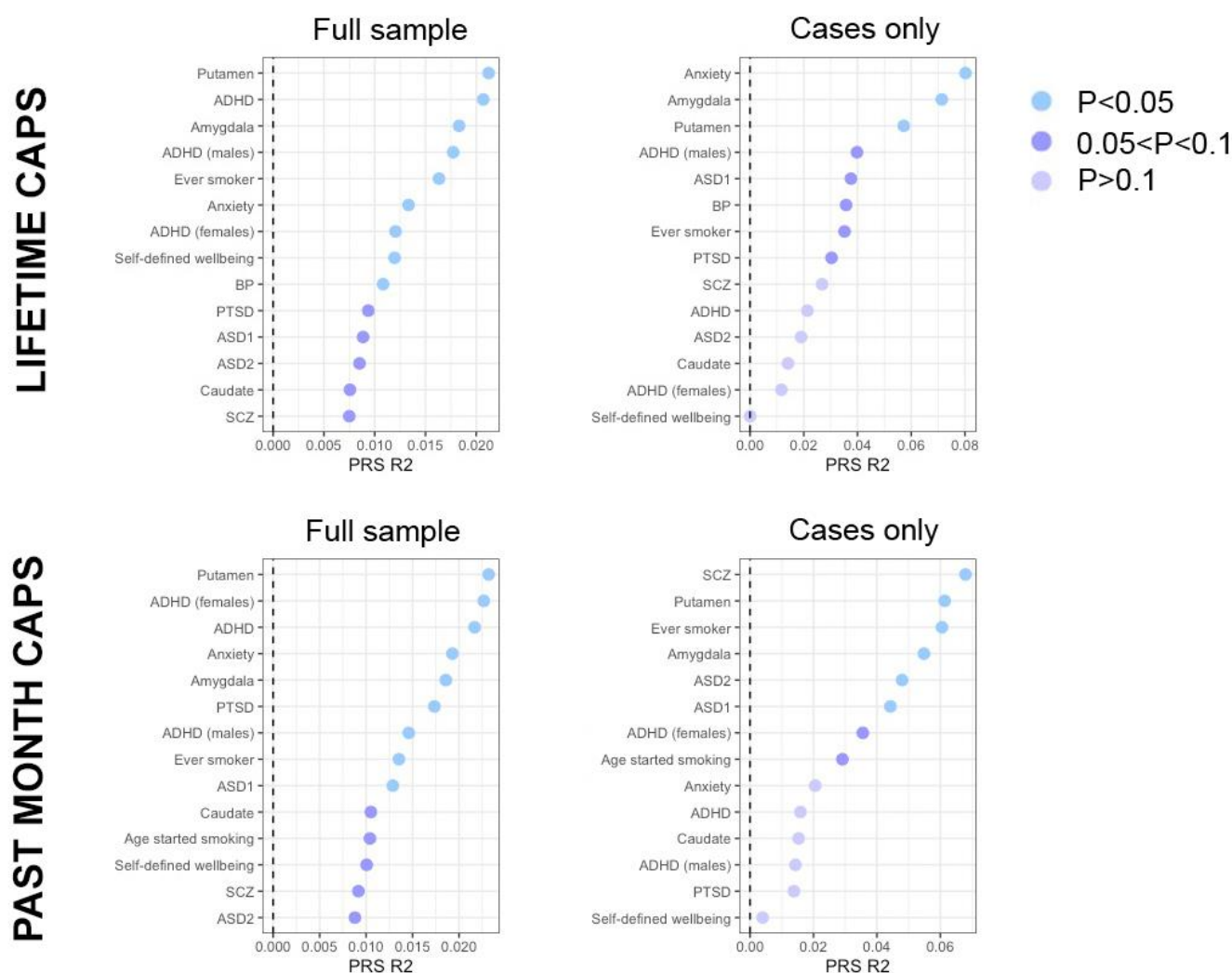


Figure 3: Phenotypic variance (R^2) in (A) Highest Lifetime and (B) Past Month CAPS

explained by PRS. All traits with $p<0.1$ are shown here for (Left) Full sample and (Right) among cases only.

Characterization of PTSD and trauma exposure

The individuals recruited to this study provided deep phenotyping information, including extensive detail of experiences of exposures during 9/11 and the following months (**Figure 1**).

These exposures variables may provide vital insights into modifying effects of environment on genetic predisposition.

Total exposures during 9/11 significantly predicted both lifetime highest and past-month CAPS ($p=9.82 \times 10^{-5}$, 1.25×10^{-4} respectively; **Table 4A**). In addition, three specific factors within the WTC Exposure Index significantly correlated with current PTSD; “Knowing someone who was injured on 9/11” ($p=0.0011$, 8.55×10^{-4} for lifetime and past-month CAPS, respectively), “Received treatment for an injury or illness during WTC recovery work” ($p=8.81 \times 10^{-6}$, $p=6.74 \times 10^{-6}$), “Slept on-site during Sep-Oct 2001” ($p=0.0037$, 0.011). In addition, knowing someone injured on 9/11 significantly predicted highest lifetime CAPS among cases alone ($p=0.033$). No WTC-related factors predicted past-month CAPS among cases.

Next, we tested for interaction effects between WTC exposures and responder type (police vs. non-traditional responder). We found a significant positive interaction between responder type and “Knowing someone who was injured on 9/11” ($\beta=17.2$, $p=0.024$) on lifetime highest CAPS, indicating that this effect is stronger among non-traditional responders. Conversely, we found a significant negative correlation between responder type and “Received treatment for an injury or illness during WTC recovery work” on past-month CAPS ($\beta=-13.0$, $p=0.0044$), indicating that this effect is stronger among police responders.

Modelling all WTC factors jointly explained ~25% of variance in CAPS scores ($R^2=0.25$, 0.24 ; $p=6.27 \times 10^{-13}$, 2.585×10^{-11} respectively: **S. Table 1**) among the full population. However,

modelling all WTC factors did not significantly predict highest lifetime or past-month CAPS among cases.

Although PTSD-CAPS here was measured specifically with regards to WTC exposures, we hypothesize that prior and subsequent traumas may also affect WTC-PTSD outcomes; therefore, we tested for association with stressful life events and childhood trauma factors included in the TLEQ and CTQ (**Table 4B**). Experiencing new life stressors since 9/11 was most significantly associated with highest lifetime CAPS ($p=1.02 \times 10^{-23}$) and past-month CAPS ($p=1.5 \times 10^{-28}$), and was also associated with lifetime highest CAPS scores among cases ($p=0.046$). In addition, all five CTQ-category scores (emotional abuse and neglect, physical abuse and neglect, sexual abuse) were significantly associated with highest lifetime ($p<2.28 \times 10^{-5}$) and past-month CAPS ($p<1.86 \times 10^{-6}$). Finally, total TLEQ scores (removing redundancy with CTQ scores) also significantly predicted lifetime ($p=2.40 \times 10^{-9}$) and past-month CAPS ($p=8.26 \times 10^{-9}$). No CTQ or TLEQ factors were associated with lifetime highest or past-month CAPS among cases only.

We expect that these various measures of trauma and stressors will include some degree of redundancy, particularly among some of our most significant variables (for example, among CTQ category scores). Therefore, we constructed joint models to estimate the proportion of phenotypic variance in (i) lifetime and (ii) past-month CAPS explained by all exposures jointly. We were able to significantly predict both highest lifetime ($R^2=0.44$) and past-month CAPS ($R^2=0.44$). Despite the focus of our study specifically on WTC-related PTSD, and indeed ascertainment and clinician interviews focusing specifically on WTC-related PTSD, the most significant factors within both models are “experiencing new life stressors since 9/11”, and physical and emotional neglect. The model for highest lifetime CAPS also included significant

factors for responder type, alone and in interaction with “Knowing someone who was injured on 9/11”, and adjusted TLEQ score. Interestingly, the model for past month CAPS also included a number of significant WTC Exposures, as well as sum of WTC exposures, and interaction between responder type and “Received treatment for an injury or illness during WTC recovery work” (**Table 4A**).

Interactions between Exposures and Polygenic Risk

Our analyses demonstrate that highest lifetime and past-month CAPS scores correlate with both polygenic risk for psychiatric disorders and traits (joint $R^2 > 0.065$), and exposure to WTC-related stressors, childhood trauma, and exposure to traumatic stress following 9/11 (joint $R^2 > 0.44$). Next, we constructed a joint model including all PRS and Exposures associated with past-month and lifetime CAPS, both in our full cohort and among cases only, including interaction terms between responder type and WTC-exposures. Our models explained ~45% of variance in lifetime CAPS among the full cohort ($R^2 = 0.454$), and ~48% of variance in past-month CAPS ($R^2 = 0.480$) (**S. Table 2**).

Finally, we tested for interactions between all significant PRS and exposures in our final two models. We identified four significant interactions, all with past-month CAPS, between physical neglect and Anxiety-PRS ($p = 0.048$), physical neglect and ADHD-PRS ($p = 0.0085$), “life stressors since 9/11” and Ever-smoker-PRS ($p = 0.036$), and between emotional neglect and Ever-smoker-PRS ($p = 0.011$). We repeated our past-month model including these interaction terms (**S. Table 2**); both PRS interactions with physical neglect remained significant in this final model. In

431 addition, PRS for ADHD, Mean Amygdala Volume and Mean Putamen Volume remained

432 significant in our final model for past-month CAPS.

433

434

Discussion

We conducted a comprehensive evaluation of clinical and genotypic factors studied independently, as well as in concert, in WTC responders with chronic PTSD, compared with responders with other PTSD symptom trajectories, including no/low-symptoms, aiming to develop an integrative psychobiological model of PTSD. This cohort represents a unique opportunity to study the genetic and environmental contributions to PTSD.

Our analysis compares genetic- and environmental- factors associated with CAPS (the Clinician Administered PTSD Scale); first, with highest lifetime CAPS score (since 9/11), a measure of PTSD severity; second, with past-month CAPS, a measure of PTSD chronicity. PRS derived from GWAS of ADHD, ASD, anxiety and brain imaging phenotypes (Amygdala and Putamen volume), among others, jointly explained ~7% of variance in CAPS scores within our cohort, in line with the amount of phenotypic variance in psychiatric diagnoses observed in previous studies³³. In contrast to previous studies which identify sex-specific genetic aetiology in PTSD, we did not observe any significant interactions between sex and polygenic risk, although this is likely attributable to the small number of women in our sample. To some extent, the proportion of variance explained, and the lead GWAS-PRS associations identified in our analysis may be due to the power of each individual GWAS, rather than due to true, shared biology. For many of the GWAS from which we derive our polygenic-risk scores, we likely capture only a fraction of the true SNP-based heritability in psychiatric disease in current studies³⁴, and we expect an effect which may be more severe among studies of those phenotypes which are of particular interest to us: for example, PTSD and MDD. Similarly, the significant associations that we observe in our single-PRS analysis for schizophrenia and bipolar disorder may reflect the substantial power of

those GWAS studies, rather than necessarily indicating that these disorders have more shared genetic aetiology with PTSD than, for example, MDD.

Given that a large number of individuals within our cohort have low CAPS scores, our associations may be driven by this ‘control’ part of our distribution. Therefore, we repeated our analysis, restricting only to ‘cases’: i.e., individuals meeting the CAPS and PTSD diagnosis requirements described in our methods section. Comparing both individual and joint-PRS approaches revealed that PRS explained significantly more variance in CAPS among cases compared to the full cohort, implying that PTSD severity may be more strongly genetically regulated than PTSD case-control status. In parallel, we observed less significant relationships between traumatic exposures and PTSD severity among cases than in the full population. Together, these findings point towards greater genetic regulation of PTSD severity among cases than among the full population. This finding in particular has significant implications for larger genetic analyses of PTSD, which traditionally focus on case-control status, or on PTSD among the full population, rather than studying PTSD severity among cases specifically. These findings warrant deeper investigation in larger sample sizes.

Next, we tested for association between WTC-Exposure Index factors, as well as childhood trauma (CTQ), traumatic life events, and “stressful life events since 9/11”. We found significant associations between a range of WTC-Exposure Index factors and both highest lifetime, and past-month CAPS; and found that these associations differed significantly according to responder type. In particular, we found a more significant effect of “Knowing someone who was injured on 9/11” among non-traditional responders, and a more significant effect of “Injured at

WTC” among police responders. These findings might in part reflect higher severity of exposure and persistent personal impact over time of WTC-related exposures involving injury or illness^{35,36}, which might differ by responder type. Of note, prior research in the larger WTC responder cohort found an association between WTC-related exposure severity and WTC-related PTSD symptom severity specifically in police responders³⁷.

Importantly, despite the focus of our study specifically on WTC-related PTSD, and indeed ascertainment and clinician interviews focusing specifically on WTC-related PTSD, the most significant factors predicting both highest lifetime and past-month PTSD were “experiencing new life stressors since 9/11”, and CTQ-derived physical and emotional neglect scores, rather than WTC-exposure index items (although several of these factors were significantly associated with PTSD). These findings are in line with those of prior research on the impact that both childhood neglect³⁸ and of secondary stressors³⁶ have on risk for PTSD, and have significant implications for future studies of PTSD. We, along with others, have shown that the genetic aetiology of PTSD differs significantly according to trauma type⁹ and gender^{34,39}, implying that stratifying by trauma-type may improve study power and increase biological insights available from existing studies. However, our results highlight the difficulties with ascertaining a single index trauma that characterizes PTSD within a given cohort; even in studies designed specifically to probe a single, severe trauma, we observe more significant associations with both childhood traumas and stressful life events. Moreover, including only WTC-related items in our joint model explains substantially less phenotypic variance in CAPS than when also accounting for childhood traumas and exposures to traumatic stress since 9/11. We suggest therefore that studies focusing on the role of traumas in PTSD, or seeking to maximize power of genome-wide

association studies, should seek to characterize a range of traumas and exposures to traumatic stress, rather than assuming a single causal or index trauma.

Within our full cohort, significantly more variance in highest lifetime and past-month CAPS was explained by reported traumas and stressors than by genetic factors. To some extent, this likely reflects the relatively low power of many of the GWAS from which we derive our polygenic-risk scores, and limitations in applying PRS to individuals not of solely European ancestry. Moreover, the GWAS from which we derive our PRS do not exactly match the phenotype measured in our study; although we do include the largest available PTSD-PRS³⁹ within our analysis, we note that this GWAS focuses on PTSD case-control comparisons, rather than treating PTSD as a quantitative trait using CAPS (as here). Interestingly, we find that our PGC-PTSD-GWAS derived PRS significantly predicts CAPS among our full cohort, but is not associated with CAPS among cases only, perhaps suggesting that the PTSD GWAS captures genetic predisposition to PTSD, but not PTSD severity, which we focus on. Consequently, we may be significantly *under-estimating* the amount of variance explained by genetic risk factors. Simultaneously, we may significant *over-estimate* the amount of variance explained by these traumas and exposures to traumatic stress. Most importantly, participant recall of traumas and stressors is biased by current mood and PTSD symptomatology^{14,40}, implying that individuals within our study with current PTSD may rank their stressors higher than those without, confounding our analysis. The effect may be especially pronounced among scales and scoring systems that require rankings or subjective recall (for example, the CTQ or ‘stressful life events since 9/11’) than objective scales such as the WTC-Exposure Index applied here, perhaps also accounting for the difference in variance explained by these factors⁴¹.

527
528 Finally, we created a model jointly fitting our PRS and traumatic stress exposures to explain
529 variance in (i) lifetime and (ii) past-month CAPS. Although we explain roughly similar amounts
530 of variance in each phenotype, we note strikingly different contributions in each model. In
531 particular, we note that more variance in lifetime highest CAPS than in past-month CAPS is
532 explained by genetic factors, which may reflect differential genetic regulation of the two
533 phenotypes (i.e., that PTSD severity is more strongly genetically regulated than PTSD
534 chronicity). In addition, we note substantial differences in the stressors and traumas associated
535 with each phenotype, with many WTC-Exposure Index items significantly associated with past-
536 month CAPS only in our final models. Together, these findings imply different genetic
537 architectures and environmental stressors contributing to these two phenotypes.

538
539 These participants represent a highly vulnerable population, with exposures to severe trauma
540 during 9/11 and the following days. Identifying individuals at heightened risk for PTSD, or
541 increased risk for severe or chronic PTSD, is of special importance and relevance in this group.
542 In particular, the identification of MRI imaging phenotypes indicates that coupling of
543 neuroimaging with genetic risk score calculations may predict PTSD outcomes and resilience.

544
545

Acknowledgements

We are grateful for the advice and guidance of Pamela Sklar, who contributed centrally to the design of this study.

References

1. Kessler, R. C. *et al.* Trauma and PTSD in the WHO World Mental Health Surveys. *Eur J Psychotraumatol* **8**, (2017).
2. Goldstein, R. B. *et al.* The epidemiology of DSM-5 posttraumatic stress disorder in the United States: results from the National Epidemiologic Survey on Alcohol and Related Conditions-III. *Soc Psychiatry Psychiatr Epidemiol* **51**, 1137–1148 (2016).
3. Kessler, R. C., Chiu, W. T., Demler, O., Merikangas, K. R. & Walters, E. E. Prevalence, severity, and comorbidity of 12-month DSM-IV disorders in the National Comorbidity Survey Replication. *Archives of general psychiatry* **62**, 617–627 (2005).
4. Bonanno, G. A. Loss, trauma, and human resilience: have we underestimated the human capacity to thrive after extremely aversive events? *Am Psychol* **59**, 20–28 (2004).
5. Daskalakis, N. P., Rijal, C. M., King, C., Huckins, L. M. & Ressler, K. J. Recent Genetics and Epigenetics Approaches to PTSD. *Current Psychiatry Reports* **20**, 30 (2018).
6. Nievergelt, C. M. *et al.* Genomic Approaches to Posttraumatic Stress Disorder: The Psychiatric Genomic Consortium Initiative. *Biological Psychiatry* **83**, 831–839 (2018).
7. Stein, M. B., Jang, K. L., Taylor, S., Vernon, P. A. & Livesley, W. J. Genetic and environmental influences on trauma exposure and posttraumatic stress disorder symptoms: a twin study. *Am J Psychiatry* **159**, 1675–1681 (2002).
8. True, W. R. *et al.* A twin study of genetic and environmental contributions to liability for posttraumatic stress symptoms. *Arch Gen Psychiatry* **50**, 257–264 (1993).
9. Huckins, L. M. *et al.* Analysis of Genetically Regulated Gene Expression Identifies a Prefrontal PTSD Gene, SNRNP35, Specific to Military Cohorts. *Cell Reports* **31**, 107716 (2020).

- 580 10. Sartor, C. E. *et al.* Common heritable contributions to low-risk trauma, high-risk trauma,
581 posttraumatic stress disorder, and major depression. *Arch Gen Psychiatry* **69**, 293–299 (2012).
- 582 11. Sartor, C. E. *et al.* Common genetic and environmental contributions to post-traumatic
583 stress disorder and alcohol dependence in young women. *Psychol Med* **41**, 1497–1505 (2011).
- 584 12. Graham, J. *et al.* A Preliminary Study of DSM–5 PTSD Symptom Patterns in Veterans
585 by Trauma Type. *Military Psychology* **28**, 115–122 (2016).
- 586 13. Yehuda, R. Post-Traumatic Stress Disorder. *New England Journal of Medicine* **346**, 108–
587 114 (2002).
- 588 14. Yehuda, R. *et al.* Post-traumatic stress disorder. *Nature Reviews Disease Primers* **1**, 1–22
589 (2015).
- 590 15. Bromet, E. J. *et al.* DSM-IV post-traumatic stress disorder among World Trade Center
591 responders 11-13 years after the disaster of 11 September 2001 (9/11). *Psychol Med* **46**, 771–
592 783 (2016).
- 593 16. Chen, C. *et al.* The Burden of Subthreshold Posttraumatic Stress Disorder in World Trade
594 Center Responders in the Second Decade After 9/11. *J Clin Psychiatry* **81**, (2020).
- 595 17. Jordan, H. T. *et al.* Persistent mental and physical health impact of exposure to the
596 September 11, 2001 World Trade Center terrorist attacks. *Environ Health* **18**, 12 (2019).
- 597 18. Dasaro, C. R. *et al.* Cohort Profile: World Trade Center Health Program General
598 Responder Cohort. *Int J Epidemiol* **46**, e9 (2017).
- 599 19. Ruggiero, K. J., Del Ben, K., Scotti, J. R. & Rabalais, A. E. Psychometric properties of
600 the PTSD Checklist-Civilian Version. *J Trauma Stress* **16**, 495–502 (2003).

- 601 20. First, M. B., Spitzer, R. L., Gibbon Miriam & Williams, J. B. W. *Structured Clinical*
602 *Interview for DSM-IV-TR Axis I Disorders, Research Version, Non-patient Edition. (SCID-*
603 *I/NP). Biometrics Research* (New York State Psychiatric Institute, 2002).
- 604 21. Blake, D. D. *et al.* The development of a Clinician-Administered PTSD Scale. *J Trauma*
605 *Stress* **8**, 75–90 (1995).
- 606 22. Bernstein, D. P. *et al.* Development and validation of a brief screening version of the
607 Childhood Trauma Questionnaire. *Child Abuse Negl* **27**, 169–190 (2003).
- 608 23. Kubany, E. S. *et al.* Development and preliminary validation of a brief broad-spectrum
609 measure of trauma exposure: the Traumatic Life Events Questionnaire. *Psychol Assess* **12**,
610 210–224 (2000).
- 611 24. North, C. S., Pfefferbaum, B. & Robins, L. N. *The Diagnostic Interview*
612 *Schedule/Disaster Supplement (DIS-IV/DS)*. (St. Louis: Washington University, 2001).
- 613 25. Pietrzak, R. H., Goldstein, R. B., Southwick, S. M. & Grant, B. F. Medical Comorbidity
614 of Full and Partial Posttraumatic Stress Disorder in US Adults: Results From Wave 2 of the
615 National Epidemiologic Survey on Alcohol and Related Conditions. *Psychosomatic Medicine*
616 **73**, 697–707 (2011).
- 617 26. Chang, C. C. *et al.* Second-generation PLINK: rising to the challenge of larger and richer
618 datasets. *GigaScience* **4**, 7 (2015).
- 619 27. Purcell, S. *et al.* PLINK: a tool set for whole-genome association and population-based
620 linkage analyses. *American journal of human genetics* **81**, 559–75 (2007).
- 621 28. Das, S. *et al.* Next-generation genotype imputation service and methods. *Nat Genet* **48**,
622 1284–1287 (2016).

29. 1000 Genomes Project Consortium, {fname} *et al.* A map of human genome variation from population-scale sequencing. *Nature* **467**, 1061–73 (2010).
30. Auton, A. *et al.* A global reference for human genetic variation. *Nature* **526**, 68–74 (2015).
31. Choi, S. W., Mak, T. S. H. & O'Reilly, P. A guide to performing Polygenic Risk Score analyses. *bioRxiv* (2018) doi:10.1101/416545.
32. Euesden, J., Lewis, C. M. & O'Reilly, P. F. PRSice: Polygenic Risk Score software. *Bioinformatics* **31**, 1466–1468 (2014).
33. Consortium, C.-D. G. of the P. G. Identification of risk loci with shared effects on five major psychiatric disorders: a genome-wide analysis. *Lancet* **381**, 1371–1379 (2013).
34. Duncan, L. E. *et al.* Largest GWAS of PTSD (N=20,070) yields genetic overlap with schizophrenia and sex differences in heritability. *Molecular Psychiatry*, *Published online: 25 April 2017*; | doi:10.1038/mp.2017.77 (2017) doi:10.1038/mp.2017.77.
35. Neria, Y., Nandi, A. & Galea, S. Post-traumatic stress disorder following disasters: a systematic review. *Psychol Med* **38**, 467–480 (2008).
36. Lock, S. *et al.* Secondary stressors and extreme events and disasters: a systematic review of primary research from 2010-2011. *PLoS Curr* **4**, (2012).
37. Zvolensky, M. J. *et al.* World Trade Center disaster and sensitization to subsequent life stress: A longitudinal study of disaster responders. *Preventive Medicine* **75**, 70–74 (2015).
38. Widom, C. S. Posttraumatic stress disorder in abused and neglected children grown up. *Am J Psychiatry* **156**, 1223–1229 (1999).

39. Nievergelt, C. M. *et al.* International meta-analysis of PTSD genome-wide association studies identifies sex- and ancestry-specific genetic risk loci. *Nature Communications* **10**, 4558 (2019).
40. Durand, F., Isaac, C. & Januel, D. Emotional Memory in Post-traumatic Stress Disorder: A Systematic PRISMA Review of Controlled Studies. *Front. Psychol.* **10**, (2019).
41. Frissa, S. *et al.* Challenges in the retrospective assessment of trauma: comparing a checklist approach to a single item trauma experience screening question. *BMC Psychiatry* **16**, (2016).
42. Hibar, D. P. *et al.* Common genetic variants influence human subcortical brain structures. *Nature* **520**, 224 (2015).
43. Martin, J. *et al.* Biological overlap of attention-deficit/hyperactivity disorder and autism spectrum disorder: evidence from copy number variants. *Journal of the American Academy of Child and Adolescent Psychiatry* **53**, 761—770.e26 (2014).
44. Tobacco and Genetics Consortium. Genome-wide meta-analyses identify multiple loci associated with smoking behavior. *Nat Genet* **42**, 441–447 (2010).
45. Otowa, T. *et al.* Meta-analysis of genome-wide association studies of anxiety disorders. *Mol Psychiatry* **21**, 1391–1399 (2016).
46. Turley, P. *et al.* Multi-trait analysis of genome-wide association summary statistics using MTAG. *Nature Genetics* **50**, 229–237 (2018).
47. Genome-wide association study identifies 30 loci associated with bipolar disorder | Nature Genetics. <https://www.nature.com/articles/s41588-019-0397-8>.
48. Grove, J. *et al.* Identification of common genetic risk variants for autism spectrum disorder. *Nature Genetics* **51**, 431–444 (2019).

49. Pardiñas, A. F. *et al.* Common schizophrenia alleles are enriched in mutation-intolerant genes and in regions under strong background selection. *Nature Genetics* (2018) doi:10.1038/s41588-018-0059-2.
50. Walters, R. K. *et al.* Transancestral GWAS of alcohol dependence reveals common genetic underpinnings with psychiatric disorders. *Nature Neuroscience* **21**, 1656–1669 (2018).
51. Gao, J. *et al.* Genome-Wide Association Study of Loneliness Demonstrates a Role for Common Variation. *Neuropsychopharmacology* **42**, 811–821 (2017).
52. Howard, D. M. *et al.* Genome-wide meta-analysis of depression identifies 102 independent variants and highlights the importance of the prefrontal brain regions. *Nature Neuroscience* **22**, 343–352 (2019).
53. Goldstein, J. I. *et al.* Clozapine-induced agranulocytosis is associated with rare HLA-DQB1 and HLA-B alleles. *Nat Commun* **5**, 4757 (2014).