

The Milano Sforza Registers of the Dead: Health Policies in Italian Renaissance

Elia Biganzoli^{a*o}, Ester Luconi^{a*#}, Folco Vaglianti^{b*}, Patrizia Boracchi^{*a}, Silvana Castaldi^{c,d}, Alfio Ferrara^e, Cristiana Panella^{*f} and Massimo Galli^{*g}

*equally contributing authors

corresponding author:

ester.luconi@unimi.it

°co-corresponding author:

elia.biganzoli@unimi.it

aDepartment of Biomedical and Clinical Sciences (DIBIC) “L.Sacco” & DCSR, University of Milan, Italy; bDepartment of Historical Studies, University of Milan, Italy; cDepartment of Biomedical Sciences for Health, University of Milan, Italy; dFondazione IRCCS Ca’Granda OMP, Milan, Italy; eDepartment of Computer Science” Giovanni degli Antoni” & DSRC, University of Milan, Italy; fAfricaMuseum (Belgium); gDepartment of Biomedical and Clinical Sciences “Luigi Sacco”, University of Milan, Italy.

NOTE: This preprint reports new research that has not been certified by peer review and should not be used to guide clinical practice.

Abstract

The *Liber Mortuorum* of Milan, a corpus of 366 volumes, is probably the oldest established mortality register in a large European city. Introduced in 1450 by Duke Francesco Sforza as a measure for the early containment of plague and daily compiled until 1801, it reports demographical data and causes of death, representing an outstanding source for epidemiology, socio-anthropology, and history. Addressed to ascertain and register individual causes of death, the *Liber* represents an example of disease monitoring and prevention. About this source, this paper describes Sforza's health policy in 15th century Milan and analyzes the mortality in 1480, a year without plague to investigate interconnected social, historical, and epidemiological domains for interdisciplinary perspective.

Keywords: Milano Sforza Registers; public health; conservation science; epidemiology; history of medicine.

Overview

This paper presents the *Liber Mortuorum* of Milan, an exceptional source for sociological, anthropological, historical, and epidemiological data, put in place by Francesco I Sforza (1401-1466), Duke of Milan since 1450, with the aim to timely track the occurrence of plague. Moreover, as military Sforza has a pragmatic vision of a productive society which requested, as for the soldiers, to keep people in good health, it is also important to track the situation of the health in the city. All the deaths that occurred in Milan since the spring and the summer of 1450, are registered, with an accurate description of the demographical data of the subjects and causes of the death. This enormous amount of data, collected during 350 years, and presently consisting of a corpus of 366 volumes preserved in the Archive of State of Milan, was scarcely utilized by scholars until the Seventies of the 20th Century and remains largely unexplored. Putting into priority individual trajectories rather than quantitative data for statistical purposes, Sforza's method underlies a

qualitative approach focused on a networking protocol of information where corps and individuals are equal parts of a relational environment. This accuracy in collecting personal data reflects the particular attention of Sforza to healthcare problems, which was also witnessed, a few years after, in 1456, by the founding of a large hospital, the first in Europe aimed at the cure of diseases and not at the simple accompaniment to death (Leverotti 1984) The 15th-century registers - Milan Sforza Registers (MiSfoRe) - also included, in most cases, the proximity network of the deceased person (household, neighborhood), addressed to a more effective tracking of the infected cases in the event of a plague outbreak. Such an accurate method of survey remained utmost meticulous for more than one century, and strongly contributed to facing the virulent plague epidemics which stroked the city in 1476-78 and 1483-85 (Alter and Carmichael 1999) (Vaglianti 2013) ¹. Our paper offers a brief description of the reforms of health care institutions and charities in Italy during the 15th and 16th centuries, an overview of the spatial organization and mobility in the mid-15th century, and a focus on the MiSfoRe by a summary of the characteristics of the Registers. Information issued by the MiSfoRe has been used to build up a conceptual database, which is included in this paper, with an epidemiological analysis of the data concerning the year 1480, a year without plague, as an example of the current mortality in the city in the last part of 15th century.

Milan in the Sforza's era: an overview

In 1450, the Milan inhabitants could have been about 110.000 (Chandler 1987) although this number remains controversial and possibly oversized. Considering as city an urban agglomerate with at least 10.000 inhabitants (De Vries 2013), in the 16th century Italy counted on the largest urban population

¹ In such a period, so frequently tormented by the recurrence of the epidemics, just to give an example more than 35 treatises on plague have been published in Italy including the *De peste*, wrote in 1478 by Jacopo Soldi; the *Trattato de la pestilentia* by Girolamo Manfredi (1479), the *Consilium contra pestilentia* by Gentile da Foligno (1479), and *De Pestilentia* by Giovanni Calori. In 1481 Marsilio Ficino published the *Consilio contro la pestilentia*, which was republished several times between 1575 and 1580 when strong plague epidemics resurfaced (Katinis 2007) (Manfredi 2008).

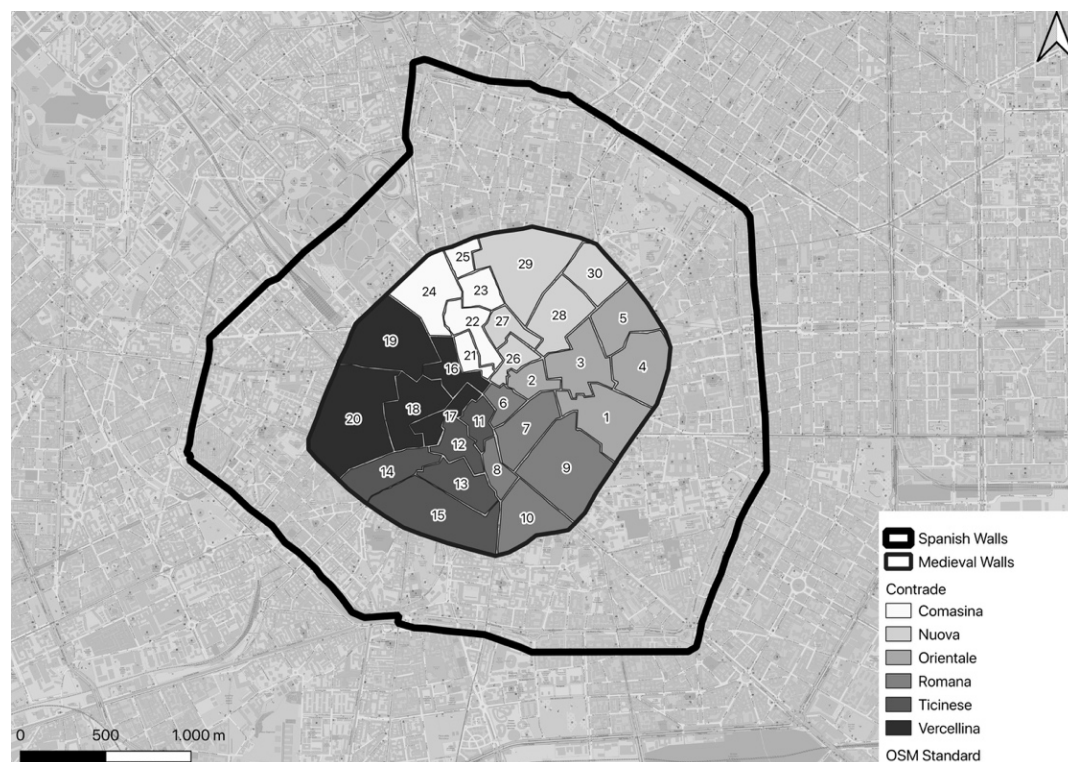
in Europe ². At the end of the 15th century, Milan was one of the major centers for the production of arms, armor, and fabrics in Europe and a trading center of primary importance, connecting northern Europe with Italy (Tucci 2011).

Milan's map reflected the expansion of the city by time: Roman walls, built between the first century B.C. and the end of the third century A.C., delimited the development of the ancient *Mediolanum* during the Roman period and were largely destroyed thereafter. A second wall ring was built between 1156 and 1171 and included the medieval city. The building of the most recent wall ring began in 1459 with Francesco Sforza and was completed in 1560, during the Spanish domination. Of all three circles of walls, only a few remains are now visible, incorporated into the further growth of the city in modern times. The medieval city was divided into six parts, called *Sestieri*, each of which drew on the map of the city an irregular triangle, whose vertex was the *Palazzo della Ragione*, that for centuries played the role of *Broletto* (Municipal building) and was located in *Piazza dei Mercanti*, in the center of the city. The base of each triangle was along the medieval ring of the city walls. Each *Sestiere* was named after the corresponding *Porta* of the city - as originally the population of each of them was responsible for the defense of the corresponding gate on the city walls (Tucci, Ronza, and Giordano 2011). They were subdivided into five *Contrade*, which were contained in the second (medieval) ring of walls (Fig.1). One of them, not necessarily the *Contrada* closest to the city center,

² (1.339.000, with 51 cities) with respect to France (688.000, 32 cities), Spain (414.000, 20 cities), Germany (385.000, 23 cities), Belgium (295.000, 12 cities), The Netherlands (150.000, 11 cities) and England and Wales (80.000, 5 cities) (Malanima 1998). In Italy, the largest city was Venice, with 150.000 inhabitants estimated in 1423 (Spruyt 1996), while Florence had 54.000 inhabitants in 1470 (Chandler 1987) and London about 50.000 in 1500 (Chandler 1987)

but probably the richest one, bore in each *Sestiere* the denomination of “noble” (Milano Città Stato, 2020).

Fig. 1. The position of the *Contrade* in the city of Milan along with the distribution in the *Sestieri*. The position of the medieval walls and the Spanish walls are also represented.



The city doors were called, going clockwise starting from the North, *Porta Nuova*, *Porta Orientale*, *Porta Romana*, *Porta Ticinese*, *Porta Vercellina*, *Porta Comasina*. Originally located on the second ring of walls, each door of the city was transferred thereafter on the new wall. The part of the city included between the second and third wall was divided among the *Porte*, but not attributed to the *Contrade*. Table 1 reports the names of the *Contrade*, their surface in square meters, the *Sestiere* they belong to, and the number of parishes located in each of them along with the name of the parishes.

Table 1. The *Contrade* of Milan, their surface, the *Sestiere* to which they belong, and the number of parishes whose reference church was located in the territory of each of them. The names of the parishes in each *Contrada* are also presented.

ID	Name	Sestiere	Surface (m ²)	Number of parishes (parishes)
1	Contrada del Verzaro	Orientale	126794	6 (S.Maria della Passarella intus, S.Martino in Compito intus, S.Michele al muro rotto intus, S.Vito in Pasquirolo intus, S.Zenone alla Crocetta intus, S.Zenone intus)
2	Nobile Contrada delle Farine	Orientale	39551	2 (Giovanni alle Fonti intus, S.Margherita intus)
3	Contrada dell'Agnello	Orientale	101678	10 (S.Galdino intus, S.Giorgio al Pozzo Bianco intus, S.Michele sotto il duomo intus, S.Paolo in Compito intus, S.Paolo intus, S.Pietro al Corpo intus, S.Pietro all'Orto intus, S.Raffaele intus, S.Simpliciano minore intus, S.Vittore e Quaranta martiri intus)
4	Contrada della Cerva	Orientale	110032	1 (S.Babila intus)
5	Contrada di Bagutta	Orientale	91946	1 (S.Andrea intus)
6	Contrada del Falcone	Romana	32892	1 (Michele al Gallo intus)
7	Nobile Contrada della Cicogna	Romana	89414	4 (S.Andrea al muro rotto intus, S.Giovanni in Conca intus, S.Maria presso S.Satiro intus, S.Tecla intus)
8	Contrada del Fieno	Romana	35705	1 (S.Alessandro intus)
9	Contrada del Brolo	Romana	195466	2 (S.Giovanni in Laterano intus, S.Nazaro intus)
10	Contrada delle Capre	Romana	104510	2 (S.Eufemia intus, S.Stefano intus)
11	Contrada della Lupa	Ticinese	35742	2 (S.Maria Beltrade intus, S.Sebastiano intus)
12	Nobile Contrada di Sant'Ambrogio	Ticinese	49210	2 (S.Giorgio intus, S.Maurilio intus)
13	Contrada delle Cornacchie	Ticinese	74943	3 (S.Fermo intus, S.Maria in Valle intus, S.Pietro in Corte intus)
14	Contrada del Torchio	Ticinese	86363	3(S.Pietro in Caminadella intus, S.Sisto Maurilio intus, S.Sisto intus)
15	Contrada della Vetra	Ticinese	184884	4 (S.Lorenzo intus, S.Michele alla Chiusa intus, S.Pietro in Campo L. intus, S.Vito al Carrobbio intus)
16	Contrada della Piscina	Vercellina	55191	3 (Monastero Nuovo intus, S.Pietro al Linto intus, S.Vittore al Teatro intus)
17	Nobile Contrada della Rosa	Vercellina	39776	3 (S.Ambrogio in Solariolo intus, S.Mattia alla Moneta intus, S.Vittore al Pozzo intus)
18	Contrada dei Morigi	Vercellina	96595	3 (S.Maria Podone intus, S.Maria al Cerchio intus, S.Quirico intus)
19	Contrada della Porta	Vercellina	166107	3 (S.Giovanni sul muro intus, S.Maria alla Porta intus, S.Nicolao intus)
20	Contrada del Nirone	Vercellina	233818	5 (S.Pietro alla Vigna intus, S.Pietro sul Dosso intus, S.Valeria intus, S.Vitale intus, SS.Nabore e Felice intus)
21	Nobile Contrada del Cordusio	Comasina	28490	4(S.Cipriano intus, S.Maria Segreta intus, S.Nazaro in Pietrasanta intus, S.Tomaso in Terramara intus)
22	Contrada del Rovello	Comasina	57225	2 (S.Marcellino intus, S.Protaso ad monachos intus)
23	Contrada dell'Orso	Comasina	44126	
24	Contrada del Campo	Comasina	110958	1 (S.Protaso intus)
25	Contrada dei Fiori	Comasina	28019	
26	Contrada Capitana	Nuova	36023	2 (S.Salvatore intus, SS.Cosma e Damiano intus)
27	Nobile Contrada dei Bossi	Nuova	39388	3 (S.Giovanni alle 4 Facce intus, S.Lorenzo in Torrigia intus, S.Silvestro intus)
28	Contrada della Mazza	Nuova	99909	5 (S.Benedetto intus, S.Donnino intus, S.Fedele intus, S.Martino in Nosiggia intus, S.Stefano in Nosiggia intus)
29	Contrada degli Andegari	Nuova	196947	2 (S.Carpoforo intus, S.Eusebio intus)
30	Contrada della Spiga	Nuova	75919	1 (S.Pietro in Cornaredo intus)

This division in *Porte* did not reflect the social organization of the city in the second half of the 15th century, which was mainly based on parishes (Colombo 1955). Organized on religious criteria and needs, each parish could include, particularly in the central part of the city, territories belonging to two or more different *Porte* or *Contrade*.

In the mid of 15th century, many large parishes were located inside the medieval walls, and most parts of the population lived outside the medieval ring of walls and did not territorially belong to a *Contrada*. Moreover, neither a defined pattern of distribution of different social classes residences in the city territory nor an evident separation among them could be found, even if nobles and wealthy people's homes were concentrated in the central part. Moving to the peripheral areas, the social conditions of the inhabitants became increasingly less wealthy. Nevertheless, four concentric centers were somewhere defined: the first, the central one, was the commercial center of the city with the majority of the shops and homes of merchants and retailers. The second one was mainly a residential area with the houses of noble and wealthy people. In the third one there were many craft shops, especially producing textiles and weapons and armor, and trade places and stores near waterways, artificial canals called *Navigli*. The last area towards the periphery and outside the second ring of the walls was populated by workers and the poorest part of the citizens, even if some noble houses were also present. Churches and monasteries were scattered throughout the city but particularly concentrated inside the line of the medieval walls. Even if areas that could be considered completely homogeneous as regards the social composition were virtually absent, some parishes were predominantly inhabited by noble and wealthy people, and some streets and neighborhoods were inhabited by artisans and traders with similar activities called *Mestieri*. In particular, there was a radial

distribution of commercial activities along the roads that connected the gates to the city center, while residential districts were located between these trade routes (D'Amico 1994).

Health reforms in Milan: the great lay hospital.

From 1350, the cities and the Italian states showed a renewed interest in charity activities to affirm the legitimacy of control civil authorities over hospitals. An early example of this growing attention is the decision of the municipality of Siena to assume - since the 13th century and not without contrast - the management of *Santa Maria della Scala*, a hospital and shelter for pilgrims, poor and abandoned children, that was initially entrusted to the Canons of the *Duomo* (Cathedral). The secular authorities declared to assume the management to guarantee a correct administration of the hospital properties (Piccinni 2013) (Baron 1990).

Referring explicitly to the Siena experience, on 6 November 1401 the first Duke of Milan, Gian Galeazzo Visconti, informed the *Vicario* and the *Dodici di Provvisione* (the Milan Municipality) that he had entrusted Enrico da Caresana, the former general administrator of the ducal possessions, to ensure the management of the city hospitals. In parallel, having to deal with the health emergencies related to a resurgence of the plague epidemic, the Duke appointed his official, Giovanni Rosselli, for a new charge of "health police" (*offitium perquirendi et exequendi expedientia circa conservationem sanitatis civitatis Mediolani*). Even if the figure of the *gubernator et rector* established by the Duke was undoubtedly innovative and would have revolutionized the Milanese hospital system, attributing to a single person the administration of various entities previously ruled

by the Milanese Church, Gian Galeazzo's decree never became operational, due to the sudden death of the Duke for plague in 1402. In the mid-fifteenth century, the reform promoted by Francesco Sforza and implemented, albeit in different ways, in all cities of the duchy, gave substance to the decree of the first Duke of Milan, giving place to a profound transformation and sanctioning the end of the religious "medieval" hospital. The roles, relationships, and functions of existing hospitals were redefined, new charity and assistance initiatives were implemented, the "large" or "major" hospitals experienced a deep rationalization and become more devoted to curing than to generic assistance. Even if ancient hospitals remained active, the large hospital became the fulcrum of a new way of conceiving assistance. The membership of the hospital *Capitula* (councils) became a prerogative of those lay noblemen to whom the administration of hospitals and the organization of the collection of alms, appeared to be a suitable instrument of social prestige. Those lay noblemen, through those actions, could also protect their social class from an unpredictable future by giving help to the *pauperes verecundi*, people who struggle to maintain a standard of living adequate to their prestige and who were ashamed to admit their difficulty (Albini 2016). Such attention to Sforza's policy for the integrity of the individual in his conditions of healthiness and illness mirrors the Neoplatonician vision of Marsilio Ficino who defined the human body as *copula mundi*, the joining link between the *hyperuranion* and the earthly world. Filarete, influenced by the Neoplatonician, was called by Francesco Sforza to his court not only to strengthen the political and military power of the new lord, symbolically represented by the reconstruction of the Visconti castle at Giovia Gate - currently named thereafter *Castello Sforzesco* - but also to reinvigorate Milan's vocation in helping the needy as part of a tradition of the city over the centuries. The promise of the Duke, expressed as a solemn vow to

the people of Milan in 1451, to establish «a large and solemn hospital» was transferred in a decree proclaimed on 1st April 1456 and Filarete was commissioned to design the plan of the hospital building.

Discover the plague soon, inspecting every single death

In 1438, under the Duke Filippo Maria Visconti, it was provided that health professionals (doctors, surgeons, barbers, and apothecaries) should report the names of the sick persons they were caring for, while the *Anziano* of the parish was required to notify all the sick and dead people by a maximum of five days from the event (Albini 1982). At the beginning of the century, Duke Gian Galeazzo Visconti had already charged the *Anziani* of the parishes to report suspected cases of plague (Rollo-Koster 2016), including those that occurred among the members of the clergy (Cipolla 1974) (Zanetti 1976). The figure of *Anziano* (Elder), a layperson elected by the parishioners, represented a reference for the population of the neighborhood. Three decades later, the prohibition of burials, in the absence of the regular license issued by the Health Office, called *sepoliatur* (literally: let them be buried), obliged the population to report any death to the competent authorities.

Francesco Sforza's project takes the early detection of plague cases to a higher organizational level and accentuates the attention paid to individual conditions in each case of death. Moreover, the individual responsibility of health officials is emphasized and moral integrity would be warranted through personal commitment and legal liability. The officials engaged in registering the deaths in the MiSfoRe were personally responsible to ascertain the causes in front of a possible investigation

by the competent judiciary. Each ring of the health chain was supposed to be professionally competent, incorruptible, and scrupulous to ensure the overall performance of the intervention. In several cases, the Registers report not only symptoms and supposed causes of sicknesses causing the death, but also the elapsed time from the beginning of symptoms and the death or the visit of the health officer, and the possible presence of symptoms in the relatives living in the same house. To note the course of the disease along with the duration of the illness was important to exclude the plague as the cause of death, which was entrusted with the compilation of a daily list of seriously ill patients. The ascertainment that the death had occurred after the fourth day was considered sufficient proof to exclude the suspicion of plague (Cohn Samuel K and Alfani 2007) The scrupulousness requested by Sforza translates into the obligation for official agents to visit sick people, including the poorest, even in periods of plague, in whatever condition they were in. Health officials were in charge of inspecting the corpses personally, collecting the deceased's data, and registering them on the same day or within a day after death, unlike Filippo Maria Visconti's method. The same duty was imposed on the graduate doctors for their patients who died at home. Although aimed, at the time of their establishment, at the rapid detection of plague, the MiSfoRe also reported the detail of the concomitant pathologies observed in each case, and the modalities of the violent deaths, including those caused by accidents at work. It, therefore, seems that the ducal government intended to deal also with the risks associated with certain works or environments (Vaglianti 2020a).

It is therefore clear that the MiSfoRe program implied a foreseeing vision of the community as an interdependent whole, beyond class and economic distinction. As for this, the exemption from registration of the persons deceased in the monasteries was not extended to members of the secular

and ordinary clergy who died outside convents and religious institutions. A characterizing element of Sforza's program was the inspection of the body of the deceased in their home or the place of death. Interestingly in 1449, during the brief parenthesis of the *Repubblica Ambrosiana*, doctors were allowed to agree with their patients on the use of their bodies for science in the event of death. This agreement, which remained valid during the entire Sforza period, testifies to the secular attitude of the Milan authorities in the mid-15th century and their openness to scientific investigation through the study of the human body. Since 1491, as soon as the completion of the 15th-century wing of the hospital allowed the preparation of a room for anatomical dissections, the *Capitulus dell'Ospedale Maggiore* (the council of the great hospital) of Milan established that “*dei poveri venienti a morte nell'ospedale si facesse particolare anatomia a disposizione dei signori fisici e di essa anatomia si redigesse ricordo, da conservare in perpetuo nell'ospedale*” (it should be given particular anatomy of the poor coming to death in the hospital at the disposal of the physicians and memory of this anatomy should be drawn up, to be kept in perpetuity in the hospital). Due to the abuses connected with the abundance of corpses for anatomical dissection in Milan, but not outside the duchy, in 1449 the *Capitulus* resolved to allow the dissection of corpses only following a specific authorization (Pecchiai 1926). This agreement represents another example of the attention of rulers to moral integrity regarding sick people and their death in the Sforza period.

The Health Office, to which Duke Francesco entrusted the responsibility for the compilation and conservation of the Registers, was composed of a doctor specialized in detecting epidemic diseases, a surgeon, commonly called *Catelano*, a barber, a carter, two gravediggers, a notary, two horsemen, three servants, a messenger in charge of carrying the death reports and, at the top, a commissioner

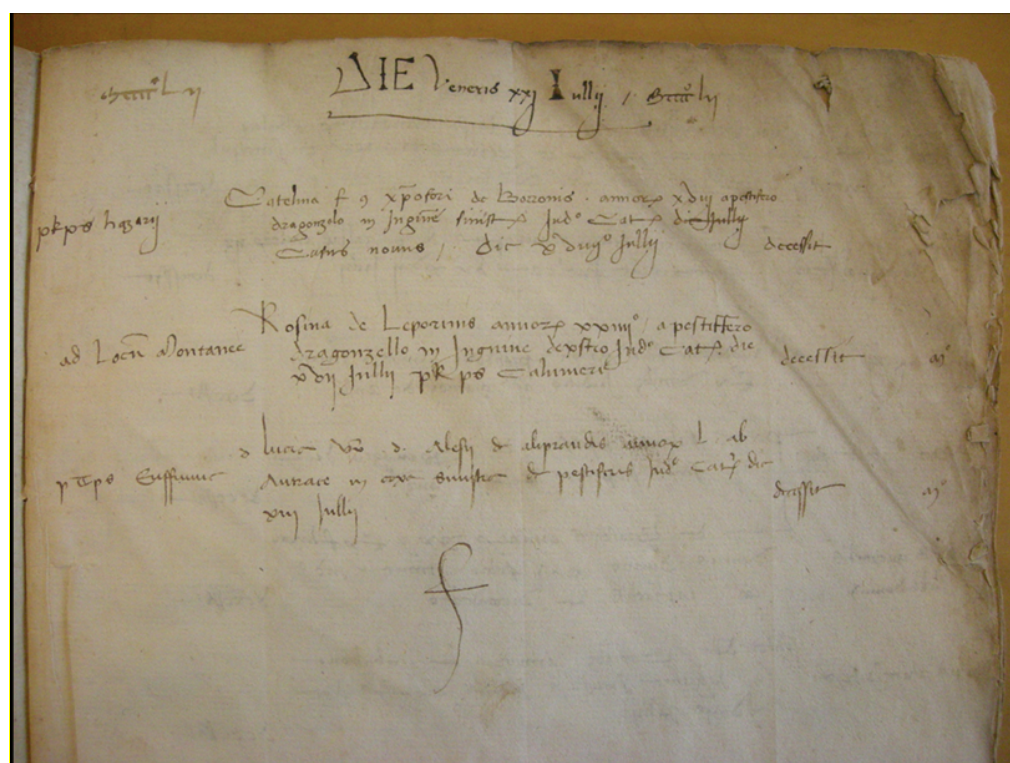
and a variable number of deputies, with the task of preserving public health in the duchy for citizens and strangers (Cipolla 1976). In 1468 there were two deputies with authority over the entire ducal territory, Pietro Trivulzio and Franceschino di Castelsampietro, drawn respectively from the Secret Council and the Magistracy of Extraordinary Revenue, two of the highest institutional expressions of the Sforza central government (Vaglianti 2020b) (Vaglianti 2020a) (Gamberini A 2020). Moreover, during Francesco Sforza's government, the professionals who composed the Health Office reported directly to the Duke. The entire system of registration was based on those important figures: bill officials, parish Elders, doctors (hospital or private doctors), and the *Catelano*. The 15th-century ducal physicians could use the registers in the daily exercise of protecting public health because they could quickly identify the first outbreak of an infectious disease. Circumscribing the epidemic phenomenon, in addition to an appreciated saving in human lives, would have avoided the use of more drastic forms of health prevention, such as the total blocking of the circulation of men and goods. This blocking would have heavily compromised the progress of commercial traffic, on which much of the economic prosperity of the duchy rested, as well as the regular supply of the same urban markets.

The corpus of *Mortuorum Libri*

The State Archives of Milan presently holds a continuous series of 366 handwritten Registers (an example of a page of the Register of 1452 is shown in Figure 2), with only some discontinuities in the 15th and early 16th century due to the fire on the night between December 31, 1501, and January 1, 1502, of the headquarters of the Office of Health (*Ufficio di Sanità*), where the volumes were stored

at that time. Because of this fire, the collection of the Registry in our possession started on July 21, 1452.

Fig. 2. Sample picture of *Mortuorum Libri* register of 1452 (kindly authorized by State Archives of Milan).



The Registers of the 15th century were written in Latin ³. Each page reported the day and the month in which the enlisted death occurred (Vaglianti 2013) and, for each case:

- (1) to which of the six *Porte* the death should be attributed.
- (2) the parish where the deceased person lived or died or would be buried.

³ Registers were written in Latin before 1774 (Zanetti 1976)

(3) the place where the death occurred if it did not correspond to the home of the dead person (the street, a hospital, an inn, a prison).

(4) the name, surname, or nickname of the deceased person. For children, adolescents, and unmarried women were reported (with few exceptions) the name of the father (specifying if still alive or deceased) or, if the father was unknown, of their mother. The foundlings were named *hospitalis filius* or *filia* (son, or daughter, of the hospital) or received a surname, most frequently *da Milano* or *Colombo*, with modifications in the frequency of their use and their variants over the centuries. The name of married women is often accompanied by the name and the surname of their husband. Gender is not mentioned, but with a few missing cases, it is inferable from the person's name or from some adjectives that are used in the wording.

(5) the social and professional status of the deceased (of the father in the case of children or the husband in the case of adult women) including titles of nobility, ecclesiastical, professional or deriving from military functions or in the administration as well as the status of servant, merchant, craftsman or worker, the condition of poverty, or the status of a prison inmate.

(6) the age at death, expressed in years for adults, and in months, days, or even hours for infants.

(7) the cause of death. Simply reported as plague or other than plague in the first registers, the causes of death became shortly thereafter accurately described, in some cases with a detail such as that achieved in the following sample, taken from the register of 1459: “Long-suffering of quartan fever,

the night before he had a paroxysm, aggravated by an indigestion that caused heart palpitations and blurred intellect, then evolved into syncope and apoplexy that led to the death ".

(8) the name of the official in charge of inspecting the bodies and determining the causes of death to be transcribed on the register along with all other information requested. This official could be a 'collegiate' doctor (indicated in this case with personal name and title) or a health official appointed to this specific duty; less frequently, the Elder of the parish or, in exceptional cases, the gravedigger.

The MiSfoRe and the others: registering mortality and morbidity in Italy and in Europe

As established in 1450, the MiSfoRe are undoubtedly older than the most renowned source of morbidity and mortality data of the European modern age, the Bills of Mortality of London. The first Bill is believed to date from November 1532. Produced intermittently in several parishes of London during outbreaks of plague, where Parsons reported the total number of plague deaths and bodies buried each week, the Bills became stably compiled in 1611, when this duty was imposed on the Worshipful Company of Parish Clerks by James I (Slauter 2011). By 1560 pairs of older women in each parish were charged with examining the dead and determining the cause of death. This choice of relying on the practical experience of those women and their knowledge of the local social context was considered adequate to the quantitative approach of recording deaths of the Bills (Boyce 2020). The clerk of the Parish Company had the task to send a copy to the Privy Council within the following day (Heitman 2020). The Bills reported for the first time a classification of the causes of death and the gender of deceased persons only in 1629, while the age at death was reported only from 1728 (Mazur 2016). It can therefore be concluded that not only the MiSfoRe were stably functioning from more than a century before the London Bills, but that through a focus on every single case of death, from the beginning including information on the age and sex of the deceased, on their social condition,

on the cause of death, they represent a much richer source of information. Compared to the Bills, moreover, the MiSfoRe were the expression of a direct government intervention, mainly based on specifically dedicated health officials, with the task of issuing judgments on the causes of death of each individual and registering the date of death daily. In contrast, the Bills reported weekly and collectively the burial dates of deceased persons whose causes of death were evaluated by elderly parish women (Rollo-Koster 2016). However, even if before the plague of 1592 the reports were available only to the Privy Council, the sovereign, and the London's Lord Mayor, thereafter the Worshipful Company of Parish Clerks began to produce a large-scale broadsheet and posting them in public areas. As a consequence, Bills of Mortality of London became the most renowned source of morbidity and mortality data, the primary source of information for public health sciences since its early origins (Heitman 2020). The identification by John Graunt, as early as 1661, of some fundamental demographic laws such as the numerical regularity of births and deaths, the relationship between the sexes at birth and death, the percentages of each cause of death relative to the total of deaths, and the consequent predictability of many biological phenomena, derives from the opportunity provided by access to the data of the Bills of Mortality (Sutherland 1963). On the contrary, the MiSfoRe have remained manuscripts and their use limited to Health Offices until 1774, three years after the beginning of the systematic surveys of the Lombard population commissioned by the government of Maria Theresa of Austria when they began to be published in print (Zanetti 1976). Despite this scholars began to be interested in them only in the 30s of the 19th century (Ferrario 1840) and incredibly this extraordinarily rich source of data remained in further long oblivion until the 70s of the 20th (C. Cipolla 1974) (Albini 1982) (Zanetti 1976). The other registers of the deaths of the main Italian cities had a similar fate. In Venice, from 1504, each parish priest must visit daily sick people living in their parish daily and must report in a book the information about the illness and if a doctor was taking care of the case. Daily information was transmitted to the *Ufficio della Sanità* (the Office of health) and, from 1537 to 1805, systematically reported in the *Necrologi* (necrologies). From 1537 to 1565 the registered data included for adult men the name, for others a more generic

definition such as “a child” or “a widow”, the occupation (for adult men, for others, when provided, that of the father) and the parish. From 1565 the included data become more similar to those reported in the Milan registers, including name, surname, age, length and nature of the illness, occupation, gender, and parish. From 1731, the physicians who visited the sick people had to certify the nature of the illness, and their names were reported in the registers, but clergy remains responsible for the transmission of the information (Bamji 2016).

The *Libri neri dei morti* of Florence were established in 1385 by the Board of the *Grascia*, an agency to regulate the provisioning of the city. Compiled up to 1778, they contain the name, the paternity, the date of the deaths and the place of the burial, and sometimes age and the social status of the deceased person. From the early 17th, the occupation was added. A second register was provided by the Guild of Physicians and Apothecaries and covered the period between 1450-1808. The gravediggers, who belonged to the Guild, were the source of information, reporting the names of those they buried and the date of the death. From 1780, parishes got the task to report information about the deceased people (Parenti 1943) (Cipolla 1978). Apart from rare exceptions, there are no records on infant and children mortality. Therefore, even if the Florentine registers were established before the MiSfoRe, the data contained in them are overall less complete. Moreover, both in Venice and in Florence the registration of the dead was not a responsibility directly assumed by the state government.

In Italy, many other registers have been established to detect the presence of the plague in the city: in Mantua, for example, from 1456 there were lists of death and indications about the causes of death; in 1839 Count Carlo D’Arco makes statistical observations on them, in particular on the fluctuations of the causes of death during the year and the change in the main causes of death in the various historical periods. Verona’s registers (from 1629) were similar to those of Milan, dead people were reported day by day (women, men, and children), as well as the cause of death and socio-demographic information such as age, country, and duration of the disease.

Bologna’s registers started in 1456 and Padova’s from 1598 (Zanetti 1976).

Outside Italy, Barcellona's registers, started in 1457 (Zanetti 1976). They were constituted by the city council and for the fourteenth to the fifteenth centuries to detect the presence of the plague. At that time the recurrent epidemics were leading to the commercial decline of the Mediterranean area.

Having the exact count of plague deaths available had the advantage of not leading to exaggerations regarding the severity of the disease, and therefore to convince people to stay in the city, as well as monitoring the situation in the city that allows coping with the situation.

The information network for compiling the Barcelona registers started from the letter carrier: it had the task of obtaining and reporting daily information on the number of funerals and baptisms in each parish. It is uncertain whether these records also included infants (Smith 1936).

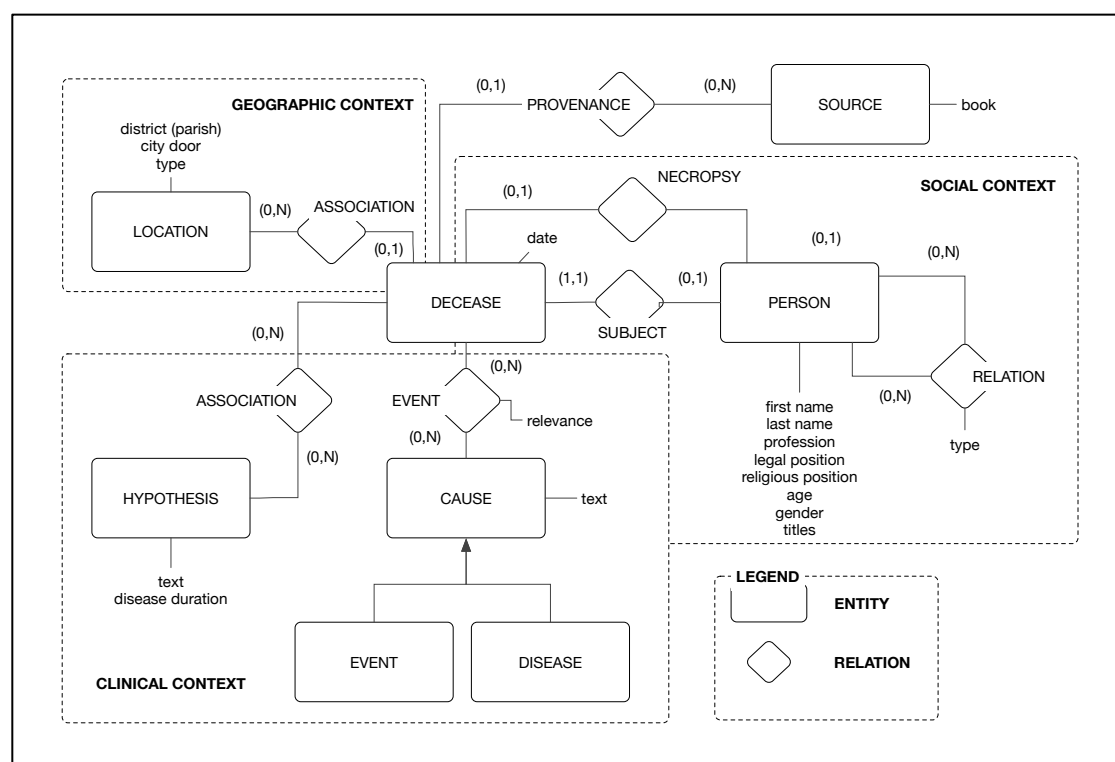
The Database project

The interdisciplinary approach to the Registers has implied the creation of a conceptual database to make accessible the information contained in MiSfoRe to scholars of different disciplines (e.g. historians, medical historians, anthropologists, clinicians, epidemiologists).

The importance of making information accessible has been receipted by studies about other death registers such as the Bills of Mortality of London, whose data collected from 1664 to 1849 were made accessible to any user (UK Data Service, 2020). A conceptual overview of the projected database is shown in Figure 3, where data are described in terms of entities, attributes, relations among entities, and their cardinality constraints. The main entity is the DECEASE, which represents the event of a death as recorded in the MiSfoRe corpus. Such an event is associated with a date and has a PROVENANCE, that is the reference to the specific book in the corpus where the deceased record has been retrieved. Three main contexts conceptualize a variety of other entities, each depicting the historical and interpretative background of the death event. Namely, Social Context, which is related to the people directly or indirectly involved in the death event and their mutual relations. The Geographic Context is related to the distribution of the events over the territory of the historical city

of Milan. The Clinical Context is referred to the hypothesis and the causes concerning the death. In particular, two main kinds of causes, namely EVENTS (e.g., incidents, fights, murder) and DISEASE (i.e., any natural cause of death that is interesting from a clinical perspective) have been also considered.

Fig. 3. A conceptual overview of the data extractable from the MiSfoRe.



The 1480 register: epidemiological analysis

The data entry was performed by the staff collaborating with the paleographer. The contents of the variable in the version of this study are reported in Table 2.

Table 2. Variables in the 1480 database and their codification.

Variables	Codification	Definition (if not defined before)	Levels (if categorical)
n.	Numeric integer	Progressive number used by identification of subjects	
Register	Character	The identification of the register of the records	76/I
Door	Character		Comasina, Nuova, Orientale, Romana, Ticinese, Vercellina
Parish	Character		
Death Date	Date (yyyy-mm-dd)	The date of death	
Subject	Character	The name, surname or nickname of the deceased person	
Name	Character	The name of the subject (extrapolated from the variable "Subject")	
Surname	Character	The surname of the subject (extrapolated from the variable "Subject")	
Age	Character		
Sex	Character		F, M
Profession of the subject	Character		e.g.: canevario, giurisperito
Profession of the relative	Character		
Legal status			e.g.: religious, widowed, servant
Type of religious	Character	For legal status=religious	e.g.: canon, monk, nun, presbyter
Honorary titles of the subject	Character		e.g.: domina, dominus, maestro
Honorary titles of the relatives	Character		e.g.: maestro
Name of the relative	Character		e.g.: Lorenzo, Ambrogio, Gabriele
Degree of kinship	Character		e.g.: father, husband
Relative state	Character		e.g.: dead
Type of the place of death	Character		e.g.: hospital, castle, monastery
Name of the place of death	Character		e.g.: <i>Monastero Nuovo, ospedale di S.Caterina, monastero di S.Francesco</i>
Age_years	Numeric integer	Age of the subjects expressed in years (extrapolated from Age)	
Age_months	Numeric integer	Age of the subjects expressed in months for children and infant, were appropriated (extrapolated from Age)	

Age_days	Numeric integer	Age of the subjects expressed in days for children and infant, were appropriated (extrapolated from Age)	
Tot_age_days	Numeric integer	Calculating from Age_months, Age_years, Age_days	
Cause of death	Character		
Physician name (<i>Necroscopi</i>)	Character		e.g.: <i>Catelano (Iuditio Catelani), Maestro Ambrogio Pasquali, Maestro Matteo da Busto</i>
Violent death	Indicator variable		0= nonviolent death 1=violent death (suicide, homicide or injuries)

To obtain integrity of data collected considering the need to uniform data to perform analysis such as statistical and spatial analysis, and to obtain data correctly readable by software such as R (R Core Team 2021) the following steps were performed on the first input of data in the trial database:

- (1) The potential presence for repeated records was checked and the repetitions were removed from the dataset.
- (2) The presence of special characters was checked (for example *) in the header and the cell was checked and were removed. The recordings of missing data were codified as NA. If not, a recording of them has been carried to obtain a unique identification. If the information about the missing data could be deduced from other fields, a correction has been made (i.e.: a subject had a NA for Sex; the name of this subject was *Giovannina*, so the Sex could be codified as female).
- (3) A spelling or typing error correction has been performed (i.e.: A. *Maria al Circolo* has been corrected as S. *Maria al Circolo*). Those cases where the inconsistencies or errors could not be attributed to a typing were solved after an expert check.

To attempt an etiopathological classification, the causes of death reported in the register were grouped after an accurate evaluation of each case supported by the consultation of ancient treatises, with particular regard to the *Libro della cura delle febbri*, a treatise of the XIV century (reported by

(Manuzi 1863) and to the medical treatises of Sennert (Sennert 1608) and Borsieri de Kanilfed (Borsieri de Kanilfeld 1781).

Mortality may be an important indicator of the size and socioeconomic status of the population living in each area of the city. Accordingly, it was tested whether the total mortality could be a proxy of population density in each parish and the perinatal mortality in different parishes was compared as a possible indicator of poverty.

The location of the many parish churches no longer existing has been defined as precisely as possible. Several parishes were divided into two parts, one inside and one outside the second (medieval) ring of walls (for example, *San Lorenzo foris* and *San Lorenzo intus*).

For parish churches inside the medieval walls, where not otherwise specified, the subjects were classified as “intus” and for parish churches outside the medieval walls, all subjects were classified as “foris”. According to this classification in the registry, there were 994 (54,8%) subjects codified as “intus” (inside the medieval walls) and 819 (45,2%) as “foris” (outside the medieval walls).

Since most of the parishes concentrated in the central part of the city had an extension, as well as a population very variable, the mortality was assessed in larger and theoretically homogeneous areas such as the *Contrade*, attributing to each *Contrada* the mortality of the parishes whose church was located on their territory. Moreover, it was compared the mortality that occurred in the *Contrade*, inside the old walls, with the mortality in the parishes placed between them and the third circle of walls which was under construction at the time of the Sforzas.

In particular, to quantify the indicators of the socio-economic conditions territorial density was used. The territorial density of events (for all subjects and for infant and perinatal subjects) was expressed as (number of events/area of the *Contrada*)*1000.

For subjects with the indication of “foris” to calculate the territorial density of the same indices was considered the area between the Spanish walls and the medieval walls.

The representation of the territorial density was carried out through maps and in particular the analyzes were performed using Qgis (vers. 3.16.2) (Qgis Development Team 2021) and the basemap is OpenStreetMap (© OpenStreetMap contributors).

Mortality in Milan in 1480: results and discussion

The Register of 1480 (76/I) starts from January 23rd. It was impossible to find the recordings of the first 22 days, which should have been accessible in the '30s of the 19th century to Ferrario (Ferrario 1840), who reported in January 1480 a total of 170 deaths, and a total of 1938 deaths in the entire year. After excluding some double registrations, the total number of deaths enlisted in the 1480 register resulted to be 1813. Table 3 shows the comparison between the monthly deaths for each month resulting in our study to those reported by Ferrario (Ferrario 1840). Only minimal differences were evidenced, apart from the deaths that occurred in January. No significant differences have been observed in mortality in the different seasons.

Table 3. Deaths monthly registered in 1480 as reported by Ferrario compared to those found in the present study.

Month	Jan	Feb	Mar	Apr	May	Jun	Jul	Aug	Sep	Oct	Nov	Dec	Tot
Ferrario	170	190	144	194	162	106	191	192	130	159	164	146	1948
Present study	50	178	150	194	161	107	190	192	131	159	153	148	1813

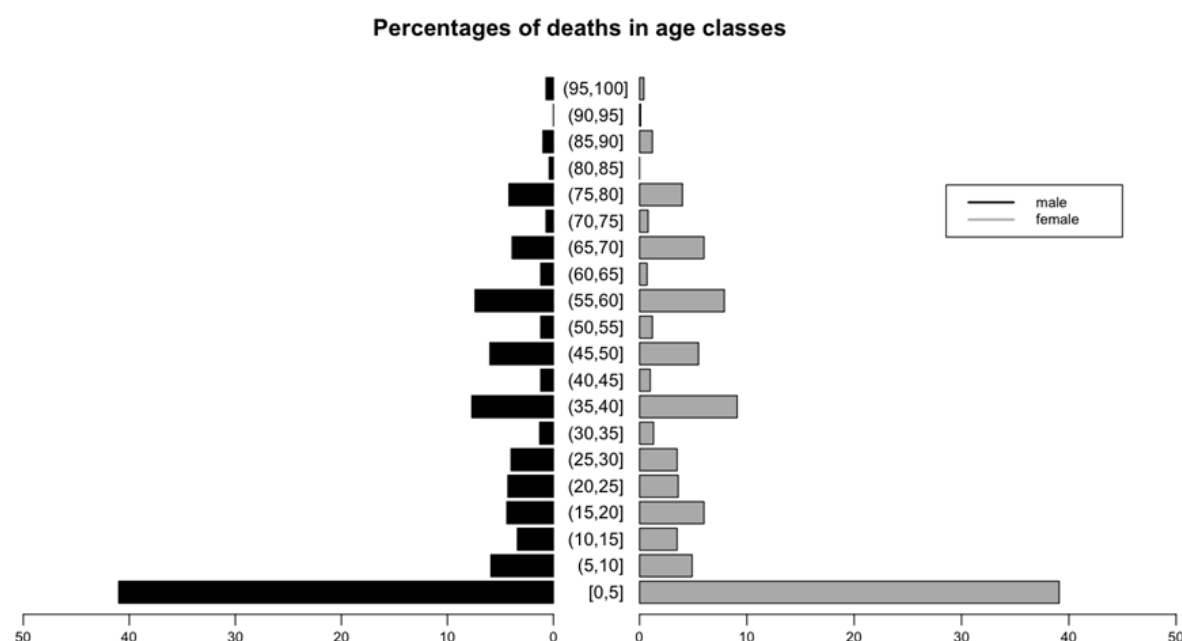
In table 4, which presents the descriptive statistics of the distribution by age (years) at death and by gender in the 1811 subjects whose age was reported, females appear slightly older at death than males.

Table 4. Age (years) at death and distribution by gender.

	Mean	Median	Min	Max	First quartile	Third Quartile	Standard deviation	Includes subjects
Overall	26,17	17,00	0	100	1	50	27,57	1811
Female	26,78	18,00	0	100	1	50	27,58	910
Male	25,55	14,00	0	100	0	50	27,56	901

However, the mortality by gender was not significantly different in the different age classes (figure 4). It appears evident that in 1480 children aged 0-5 years paid the highest contribution to the mortality of the Milanese population, representing about 41% of the total deaths in males and 39% of those occurred in females.

Fig. 4. Comparison of percentages of deaths in the different age classes in males and females.



Interestingly, in the 1046 subjects remaining in the analysis after excluding children younger than 8 years old, no more differences in the age at deaths between males and females were observed (Table 5).

Table 5. Distribution of age (years) at the death after excluding infant mortality.

	Mean (years)	Median (years)	Min (years)	Max (years)	First quartile (years)	Third Quartile (years)	Standard deviation (years)	Included subjects
All subjects	44,45	40,00	8,00	100,00	24,00	60,00	22,84	1046
Female	44,32	40,00	8,00	100,00	24,00	60,00	22,85	540
Male	44,60	40,00	8,00	100,00	25,00	60,00	22,84	506

The mortality in the different parts of the city

The parishes cited in the register were 104 to highlight a marked fragmentation of the territory among them, especially in the most central part of the city. The number of deaths observed in each parish was very variable, probably due to their different size and population. Figure 5 shows the location on the map of Milan of the church giving the name to the parishes where occurred several deaths were higher than 1% of the total mortality observed.

Fig. 5. Distribution on the Milan map of the parishes with more than 1% of the total number of deaths.

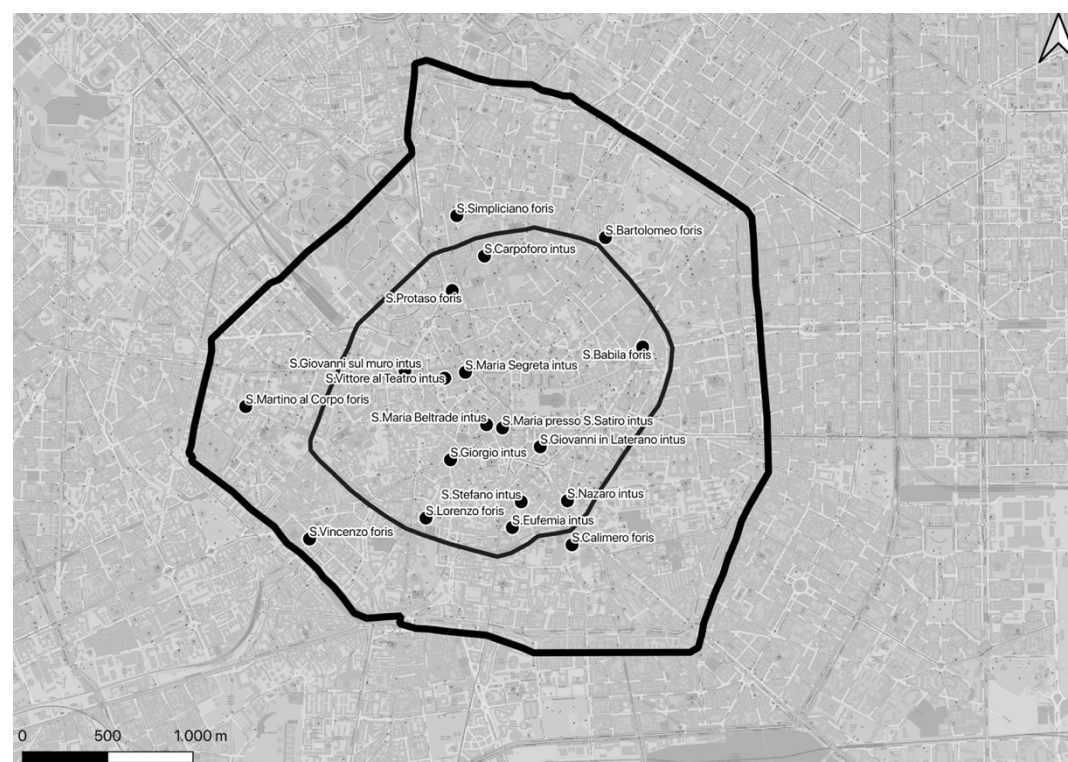


Table 6 shows the percentage of the total mortality that occurred in each parish. The highest mortality was seen in the parishes of *S. Lorenzo foris*, *S. Protaso foris*, *S. Simpliciano foris*, *S. Nazaro intus* and *S. Calimero foris*.

Table 6. Parishes with a number of deaths higher than 1% of the total mortality.

Parish	N (%)
S.Lorenzo foris	188 (10,4%)
S.Protaso foris	102 (5,6%)
S.Simpliciano foris	98 (5,4%)
S.Nazaro intus	95 (5,2%)
S.Calimero foris	92 (5,1%)
S.Bartolomeo foris	78 (4,3%)
S.Stefano foris	71 (3,9%)
S.Stefano intus	63 (3,5%)
S.Babila intus	59 (3,3%)
S.Babila foris	57 (3,1%)
S.Martino al Corpo foris	52 (2,9%)
S.Protaso intus	53 (2,9%)
S.Carpoforo intus	40 (2,2%)
S.Eufemia intus	39 (2,2%)
S.Maria Beltrade intus	33 (1,8%)
S.Vincenzo foris	31 (1,7%)
S.Giorgio intus	27 (1,5%)
S.Lorenzo intus	27 (1,5%)
S.Eufemia foris	25 (1,4%)
S.Vittore al Teatro intus	24 (1,3%)
S.Giovanni in Laterano intus	22 (1,2%)
S.Giovanni sul muro intus	22 (1,2%)
S.Maria presso S.Satiro intus	21 (1,2%)
S.Maria Segreta intus	20 (1,1%)

Figure 6 illustrates the distribution of the deceased people in the Contrade taking into consideration the area of each Contrada and in the area between the Spanish walls and the medieval walls. The number and the percentage of the deceased people among the Contrade and outside the *Contrade* are in Table 7.

Fig. 6. Distribution of the deceased people in the Contrade taking into consideration the area of each Contrada and in the area between the Spanish walls and the medieval walls.

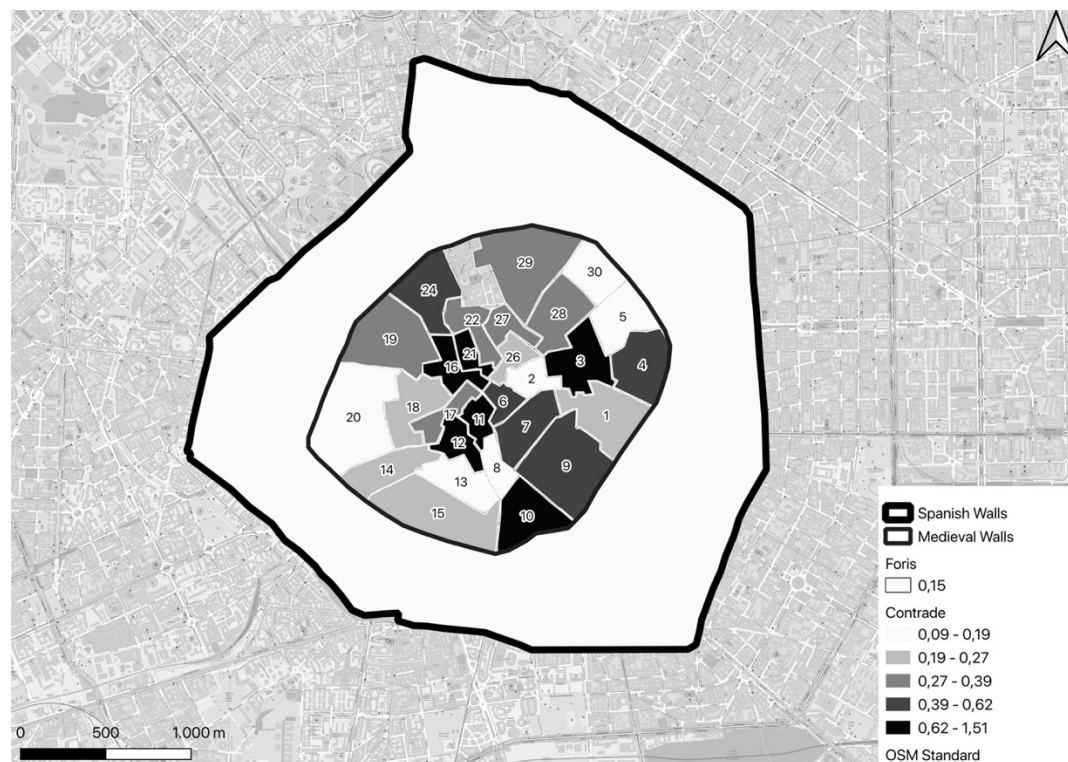


Table 7. The number of deaths and the percentage of the total deceased persons in each *Contrada* and the area outside the *Contrade*. The denominator was the subjects in the registry.

ID (Name)	N (%)
9 (<i>Contrada del Brolo</i>)	117 (6,5%)
10 (<i>Contrada delle Capre</i>)	102 (5,6%)
3 (<i>Contrada dell'Agnello</i>)	64 (3,5%)
4 (<i>Contrada della Cerva</i>)	59 (3,3%)
24 (<i>Contrada del Campo</i>)	53 (2,9%)
29 (<i>Contrada degli Andegari</i>)	53 (2,9%)
19 (<i>Contrada della Porta</i>)	50 (2,8%)
15 (<i>Contrada della Vetra</i>)	49 (2,7%)
7 (<i>Nobile Contrada della Cicogna</i>)	48 (2,6%)
11 (<i>Contrada della Lupa</i>)	47 (2,6%)
21 (<i>Nobile Contrada del Cordusio</i>)	43 (2,4%)
16 (<i>Contrada della Piscina</i>)	38 (2,1%)

28 (Contrada della Mazza)	36 (2%)
12 (Nobile Contrada di Sant'Ambrogio)	33 (1,8%)
1 (Contrada del Verzaro)	28 (1,5%)
18 (Contrada dei Morigi)	22 (1,2%)
20 (Contrada del Nirone)	22 (1,2%)
14 (Contrada del Torchio)	19 (1%)
22 (Contrada del Rovello)	19 (1%)
5 (Contrada di Bagutta)	15 (0,8%)
6 (Contrada del Falcone)	15 (0,8%)
17 (Nobile Contrada della Rosa)	15 (0,8%)
27 (Nobile Contrada dei Bossi)	14 (0,8%)
13 (Contrada delle Cornacchie)	8 (0,4%)
26 (Contrada Capitana)	8 (0,4%)
30 (Contrada della Spiga)	8 (0,4%)
2 (Nobile Contrada delle Farine)	5 (0,3%)
8 (Contrada del Fieno)	4 (0,2%)
FORIS	819 (45,2%)

The causes of death

Attempting an etiopathogenic classification, the occurred deaths could be divided among 31 different natural causes and 5 non-natural / violent causes. Table 8 shows their distribution, considering only the main cause of death reported in each case by the health officers.

Table 8. Deaths occurred in 1480 grouped by identified causes.

Causes of death	Number of subjects (%)
Perinatal mortality	347 (19.2%)
Fevers without specified organ involvement	315 (17,4%)
Children deaths, no causes reported	293 (16,2%)
Acute pneumonia	119 (6,6%)
Fever with respiratory symptoms	82 (4,5%)
Fever with gastrointestinal symptoms	68 (3,8%)
Dropsy	60 (3,3%)
Neurologic and cerebrovascular diseases	48 (2,7%)
Other diseases probably caused by infections	48 (2,7%)
Consumption (<i>ptysis</i>)	44 (2,4%)
Worms	40 (2,2%)
Other, non-infectious causes	36 (2,0%)
Asthma	32 (1,8%)
Fever with exanthema	32 (1,8%)
Possible UTI/ urinary stones	32 (1,8%)
Childbirth or related causes	30 (1,7%)
Diarrhea, dysentery without fever	28 (1,5%)
Chronic respiratory disease	27 (1,5%)
Old age	21 (1,2%)
Unknown/ undetermined/ unreadable	22 (1,2%)
Jaundice/liver disease	18 (1,0%)
Cancer	14 (0,8%)
Heart disease	7 (0,4%)
Starvation	7 (0,4%)
Erysipelas	3 (0,2%)
Hemorrhagic disorders	2 (0,1%)
Smallpox	2 (0,1%)
Gangrene	1 (0,1%)
Not natural/Violent causes of death	
Accident	15 (0,8%)
Homicide	12 (0,7%)
Suicide	4 (0,2%)
Drowning	2 (0,1%)

As will be discussed in more detail below, limited attention was paid in the register to detail the causes of infant death. Nevertheless, perinatal mortality was the most frequent 'cause' of death, and mortality in children without any specification of the causes the third. Taken together, these two 'causes' accounted for 35% of the observed deaths. Besides these, the causes accounting for more than 5% of the total deaths recorded causes reported were various types of fevers without the

signalization of specific organ involvement, which taken together accounted for 315 cases and acute pneumonia.

Infant deaths

The deaths registered in children 0 to 7 years old were 765, of which 395 (51,6%) were observed in males and 370 (48,4%) in females. Table 9 shows the distribution of age at deaths in infants.

Table 9. Distribution of age (years) at death for infants.

	Mean (years)	Median (years)	Min (years)	Max (years)	First quartile (years)	Third Quartile (years)	Standard deviation (years)	Number of subjects
All subjects	1,16	0,00	0,00	7,00	0,00	2,00	1,78	765
Female	1,17	0,00	0,00	7,00	0,00	2,00	1,65	370
Male	1,15	0,00	0,00	7,00	0,00	2,00	1,90	395

About 50% of the infant deaths occurred within the first year of life, and 75% before the end of the second. These data on infant mortality in Milan in 1480 are to our knowledge the oldest available today among those taken from death registers. It is known that the deaths observed in the first 27 days of life should be mainly attributed to ‘endogenous factors’ such as inborn diseases, congenital abnormality, birth trauma, or pre-term birth, while deaths occurring from the 28th day to 1 year of age are more likely to ‘exogenous causes’, such as infectious disease, malnutrition and poor living conditions (Bourgeois-Pichat 1951) (Lewis and Gowland 2007).

In Table 10 is presented the distribution of the age of subjects which had an age equal or less than 27 days.

Table 10. Distribution of age (years) at death for subjects which had an age equal or less than 27 days.

	Mean (days)	Median (days)	Min (days)	Max (days)	First quartile (days)	Third Quartile (days)	Standard deviation (days)	Number of subjects
All subjects	5.80	6	0	21	1	8	4.86	233
Female	6.59	7.5	1	21	1	8	5.31	94
Male	5.27	4	0	20	1	8	4.47	139

The data from Milan in 1480 are in agreement with the observations on infant mortality reported in later times. An excess of mortality in male infants has been well described both in contemporary and historic populations (Stinson 1985) (Drevenstedt et al. 2008). In particular, the relative fragility of male infants was confirmed by an analysis of data of fifteen developed countries regarding the period between the mid-18th and 1970, where the excess of male mortality increased in association with an overall decrease in infant mortality. The male disadvantage could be related to the decline of the contribution of infectious disease to infant mortality, and the decrease of this disadvantage after 1970 was due to the decline in the contribution of perinatal conditions to infant mortality (Drevenstedt et al. 2008) The number and the percentage of deaths under the age of eight occurred in each parish are reported in Table 11.

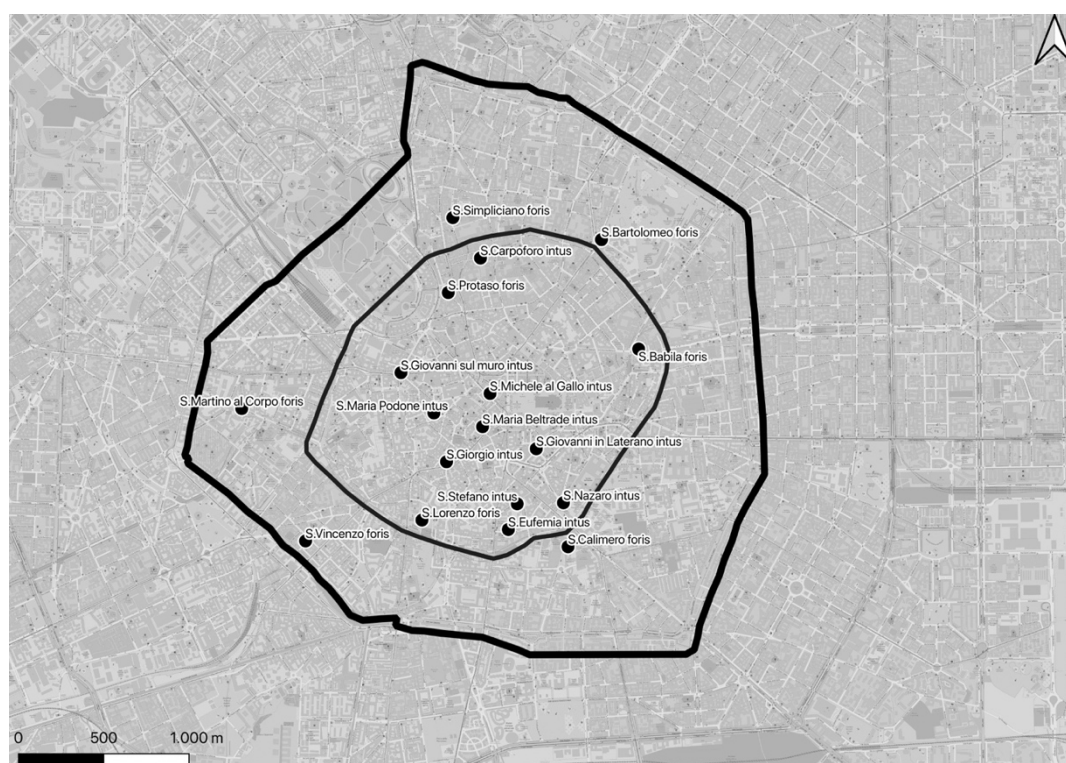
In Table 11 is presented the distribution of infant and perinatal mortality, of the subjects from 0 to 6 months old (all, females and males) and from 6 to seven years (all, females and males) for parishes. For children aged 0 to 7, the denominator is the total number of children of that age (765) and was also considered for the total number of children who died within six months of life and after six months of life. The total number of dead males within six months of life was 208, while females were 170. For the denominator of males and females who died within six months of life, the total number of subjects who died within the first six months of life was considered (378). The females who died from six months to seven years of age were 200, the males were 187. For the denominator of the males and females who died from six months to seven years, the total number of dead subjects from six months to seven years was considered (387).

Table 11. Distribution of subjects from 0 to 7 years old in parishes.

Parish	Infant and perinatal N (%)	0-6 months N (%)	0-6 months (females) N (%)	0-6 months (males) N (%)	6 months-7 years N (%)	6 months-7 years females N (%)	6 months-7 years males N (%)
S.Lorenzo foris	75 (9,8%)	39 (5,1%)	14 (3,7%)	25 (6,61%)	36 (4,7%)	36 (4,7%)	16 (4,13%)
S.Protaso foris	46 (6%)	19 (2,5%)	5 (1,32%)	14 (3,7%)	27 (3,5%)	27 (3,5%)	18 (4,65%)
S.Simpliciano foris	44 (5,8%)	21 (2,7%)	10 (2,65%)	11 (2,91%)	23 (3%)	23 (3%)	10 (2,58%)
S.Bartolomeo foris	40 (5,2%)	22 (2,9%)	14 (3,7%)	8 (2,12%)	18 (2,4%)	18 (2,4%)	7 (1,81%)
S.Stefano foris	38 (5%)	20 (2,6%)	10 (2,65%)	10 (2,65%)	18 (2,4%)	18 (2,4%)	13 (3,36%)
S.Calimero foris	35 (4,6%)	22 (2,9%)	8 (2,12%)	14 (3,7%)	13 (1,7%)	13 (1,7%)	9 (2,33%)
S.Nazaro intus	28 (3,7%)	11 (1,4%)	4 (1,06%)	7 (1,85%)	17 (2,2%)	17 (2,2%)	7 (1,81%)
S.Protaso intus	25 (3,3%)	11 (1,4%)	7 (1,85%)	4 (1,06%)	14 (1,8%)	14 (1,8%)	4 (1,03%)
S.Babila foris	24 (3,1%)	14 (1,8%)	6 (1,59%)	8 (2,12%)	10 (1,3%)	10 (1,3%)	5 (1,29%)
S.Eufemia intus	22 (2,9%)	7 (0,9%)	4 (1,06%)	3 (0,79%)	15 (2%)	15 (2%)	7 (1,81%)
S.Eufemia foris	21 (2,7%)	0	0	0	21 (2,7%)	21 (2,7%)	7 (1,81%)
S.Babila intus	19 (2,5%)	8 (1%)	1 (0,26%)	7 (1,85%)	11 (1,4%)	11 (1,4%)	5 (1,29%)
S.Maria Beltrade intus	18 (2,4%)	10 (1,3%)	4 (1,06%)	6 (1,59%)	8 (1%)	8 (1%)	3 (0,78%)
S.Martino al Corpo foris	16 (2,1%)	13 (1,7%)	5 (1,32%)	8 (2,12%)	3 (0,4%)	3 (0,4%)	2 (0,52%)
S.Stefano intus	15 (2%)	10 (1,3%)	5 (1,32%)	5 (1,32%)	5 (0,7%)	5 (0,7%)	2 (0,52%)
S.Giorgio intus	14 (1,8%)	9 (1,2%)	6 (1,59%)	3 (0,79%)	5 (0,7%)	5 (0,7%)	4 (1,03%)
S.Carpoforo intus	12 (1,6%)	6 (0,8%)	1 (0,26%)	5 (1,32%)	6 (0,8%)	6 (0,8%)	2 (0,52%)
S.Lorenzo intus	12 (1,6%)	7 (0,9%)	1 (0,26%)	6 (1,59%)	5 (0,7%)	5 (0,7%)	4 (1,03%)
S.Giovanni in Laterano intus	11 (1,4%)	7 (0,9%)	5 (1,32%)	2 (0,53%)	4 (0,5%)	4 (0,5%)	1 (0,26%)
S.Giovanni sul muro intus	11 (1,4%)	8 (1%)	4 (1,06%)	4 (1,06%)	3 (0,4%)	3 (0,4%)	2 (0,52%)
S.Vincenzo foris	11 (1,4%)	7 (0,9%)	4 (1,06%)	3 (0,79%)	4 (0,5%)	4 (0,5%)	
S.Maria Podone intus	9 (1,2%)	4 (0,5%)	1 (0,26%)	3 (0,79%)	5(0,7%)	5 (0,7%)	2 (0,52%)
S.Michele al Gallo intus	9 (1,2%)	6 (0,8%)	4 (1,06%)	2 (0,53%)	3 (0,4%)	3 (0,4%)	1 (0,26%)

The parishes with the highest perinatal and infant mortality were *S. Lorenzo foris*, *S. Protaso foris* and *S. Simpliciano foris*. All of them were located outside the ring of medieval walls, in the peripheral part of the city (Fig. 7).

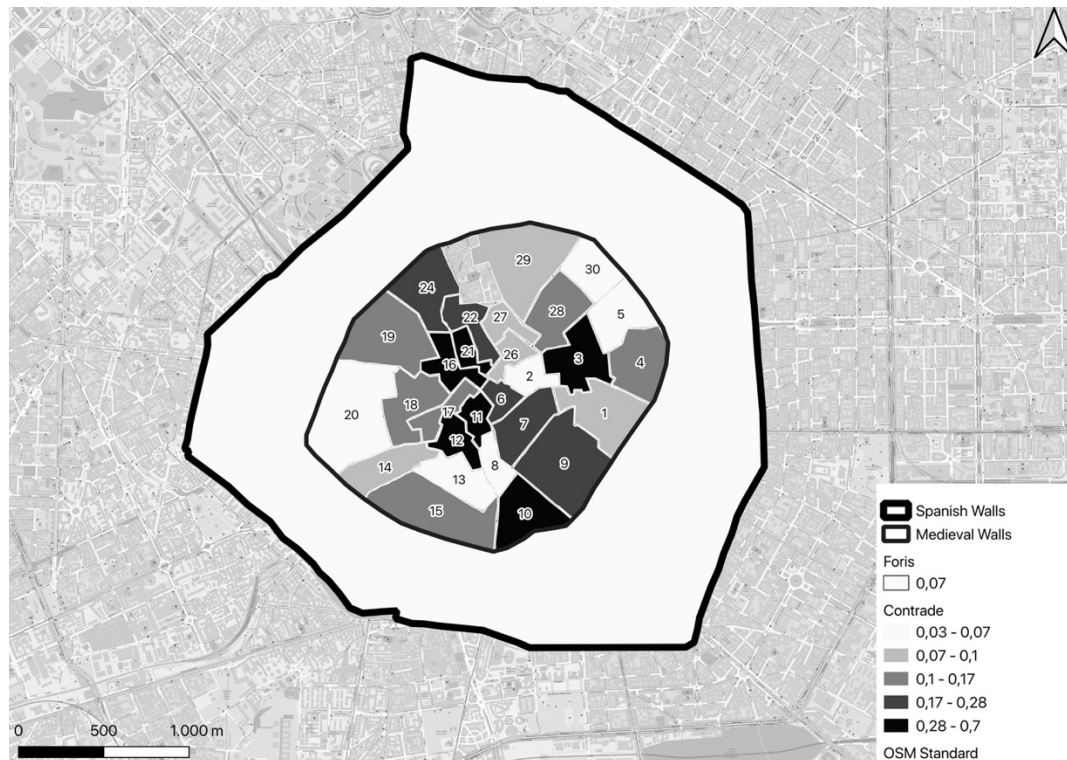
Fig. 7. Distribution on the Milan map of the parishes with an infant and perinatal mortality more than 1% of the total number of deaths of infant and perinatal mortality.



The poorest and probably most populous parishes had higher infant mortality and a fair excess of perinatal mortality in males. In London during 1580–1650 a higher male infant mortality was observed in poorer parishes, but not in the wealthier ones (Finlay 1981). Similarly, in the parish of Christ Church Spitalfield in London there was significant excess male infant mortality in the 1750–59 cohort, but not in later ones (Humphrey, Bello, and Rousham 2012).

Figure 8 shows the distribution of the deceased from 0 to 7 years old among the districts taking into consideration the area of each *Contrada* (the value of the number of deceased divided by area was multiplied by 1000) and for the area between the Medieval walls and the Spanish walls. The number and the percentage of infant mortality among the districts and in the area outside the *Contrade* are in Table 12.

Fig. 8. Distribution of the deceased from 0 to 7 years old among the *Contrade* and in the area outside the *Contrade*.



The distribution of infant and perinatal mortality is similar to the distribution of the mortality for all subjects.

Table 12. Number of subjects from 0 to 7 years old and percentage of total observed deaths in each Contrada and the area outside the Contrada (foris). The denominator was the number of subjects from 0 to 7 years old, so 765.

ID CONTRADA (Name)	N (%)
9 (Contrada del Brolo)	39 (5,1%)
10 (Contrada delle Capre)	37 (4,8%)
3 (Contrada dell'Agnello)	34 (4,4%)
11 (Contrada della Lupa)	25 (3,3%)
24 (Contrada del Campo)	25 (3,3%)
15 (Contrada della Vetra)	21 (2,7%)
19 (Contrada della Porta)	20 (2,6%)
4 (Contrada della Cerva)	19 (2,5%)
29 (Contrada degli Andegari)	19 (2,5%)
7 (Nobile Contrada della Cicogna)	17 (2,2%)
12 (Nobile Contrada di Sant'Ambrogio)	17 (2,2%)
16 (Contrada della Piscina)	16 (2,1%)
21 (Nobile Contrada del Cordusio)	15 (2%)
28 (Contrada della Mazza)	15 (2%)
1 (Contrada del Verzaro)	11 (1,4%)

18 (<i>Contrada dei Morigi</i>)	10 (1,3%)
20 (<i>Contrada del Nirone</i>)	10 (1,3%)
22 (<i>Contrada del Rovello</i>)	10 (1,3%)
6 (<i>Contrada del Falcone</i>)	9 (1,2%)
14 (<i>Contrada del Torchio</i>)	8 (1%)
17 (<i>Nobile Contrada della Rosa</i>)	5 (0,7%)
5 (<i>Contrada di Bagutta</i>)	4 (0,5%)
13 (<i>Contrada delle Cornacchie</i>)	4 (0,5%)
27 (<i>Nobile Contrada dei Bossi</i>)	4 (0,5%)
26 (<i>Contrada Capitana</i>)	3 (0,4%)
30 (<i>Contrada della Spiga</i>)	3 (0,4%)
2 (<i>Nobile Contrada delle Farine</i>)	2 (0,3%)
8 (<i>Contrada del Fieno</i>)	1 (0,1%)
FORIS	362 (47,3%)

Mortality in foundlings.

The register reports a total of thirty deaths at the San Celso hospital, the foundlings' hospice, occurred in children aged between 2 and 9 years (median 3 years) whose foundling condition is confirmed by the surname *da Milano* common to all of them. Even in the absence of data regarding the number of guests, it is likely that mortality among foundlings must be very high. Unlike what was observed for deaths in children occurring at their home, for which the definition of the cause of death was not defined or omitted in the majority of cases, for these foundlings, it was reported in all but three cases, three children aging two children, for whom the name of the author of the certification is also missing. On the other hand, 25 certifications were given by the same doctor, Maestro Giovanni Casetti, probably the doctor in charge of hospital care. The most frequent causes of death reported are ethical fever, with 11 cases without other association and other 5 associated with other diseases, and diarrheal diseases with or without fever in 10 cases, whose distribution during the year does not suggest that any epidemic cluster has occurred in the hospital. Four deaths are attributed to generalized edema, which in this case might be attributed to protein deficiency due to malnutrition.

Childbirth mortality

Women who died for childbirth and/ or related causes were 30 (1,7% of the total cause of death and 3.3% of causes of death of females. The percentage of deaths in childbearing age for women (15-45 years) was 229 (25.2%). The mean age for those women was 29.83 years, the median was 30 (sd=9,21).

The mean age at death was 28 years, the median was 28.5 years (sd= 5.81, min=20 years, max=40 years).

Among the women who died for childbirth mortality 12 (40%) were died in the area within the area defined by the medieval walls and 18 (60%) died in the area outside the medieval walls.

Among the women who died in childbearing age for women, 120 (52,4%) died in the area defined by the medieval walls and 109 (47,6%) died in the area outside the medieval walls.

In *S. Lorenzo foris* six cases have occurred, one-fifth of the total, confirming the probable populousness and possible poverty of that parish.

Not natural/Violent causes of death

There were 33 non-natural/violent deaths in the dataset, 1,8% of the total, a percentage almost identical to that detected by Dante Zanetti in the MiSfoRe of 1503 (55 cases out of 3156 deaths, 1,74%) (Zanetti 1976). Interestingly, in 2012 the percentage of non-natural deaths on the total recorded deaths in Italy was slightly higher (2,27%) and becomes quite similar if the deaths that occurred in transport accidents are subtracted from the total (ISTAT 2012). A marked difference, however, was seen in the deaths from murder, that in the Italy of 2012 were the 0,07% of the total deaths recorded, with about three-quarters of female victims, while in the Milano of 1480 the homicides represented 0.66% of the total deaths and all the murdered were males of the median age of 27 years (range 17- 50), all killed by sidearms, as exemplified by the unfortunate case of *Bertolino*

del Signore, killed at 26 *a letali vulneri in radice sinistre partis colli* (by a fatal wound at the base of the left side of the neck).

Due to the exclusion of suicides from burial in consecrated land, some of the deaths from suicide might have been registered as accidental, as in the case of an 18-years-old girl, registered on January 30, who died from a ‘fall from above’. An attempt to justify a suicide with a mental illness is that of *Johannina famula* (servant of) *Magdalene de Grulis*, an 18-years-old girl, registered on June 24: *Semifatua nec ex toto sui iuris, se ipsa et de mente propria arsenicho venenavit et yta proprio presbitero confessa est penitentiam agens et in presentia Johannis Petri de Affori et Bernardini speciararii regis et sui famuli et Josep de Ferrariis quibus fides adhibenda est, presentibus etiam duabus matronis fidedignis* (Semidiot and not totally in the full capacity of her faculties, she poisoned herself with arsenic and on her initiative and therefore she confessed to her presbyter repenting and in the presence of Gio.Pietro da Affori and Bernardino, the sovereign's apothecary, and his servant and Giuseppe Ferrari, to whom credit must be given, also present two trustworthy married women). The health officers were not so polite with another 21-year-old girl registered on February 12: *Studiose animi, incitata passione, assumpto veneno argento sublimato die martis proxime passata colirica et mortali succedente passione* (With premeditation, driven by passion of love, taken for poison mercury last Tuesday, with an ensuing fatal colic attack). Among the deaths due to accidental causes, two deserve to be mentioned as they account for the accuracy of the registrations in the MiSfoRe. The first is the case of *Vincenzo di* (son of) *Ambrogio Griffi*, 23 years old *qui balando cecidit super tavolam cum capite et facta forti contusione est cerebrum in 7^a* (dancing he fell on a table with his head and got a severe contusion to the brain, and died in the 7th day). The second is the accident that occurred to *Giacomo Pozzobonelli*, a 96 years old gentleman who dead *ex casu ab alto cum fractura cosse sinistre et contusione totius corporis* (for a fall from above with a fracture of the left thigh and bruising of the whole body).

Deaths in hospitals.

In addition to the 30 foundlings who died in *San Celso*, another 122 deaths occurred in a total of 11 other hospitals. Seven of them (*San Dionigi*, 9 deaths; *San Vincenzo*, 5; *San Lazzaro* and *Santa Caterina*, 4 each; *San Giacomo* and *San Simpliciano*, 3 each; *Ospedale Nuovo*, 2) probably functioned as parish hospital or hospices, with the only exception of *San Lazzaro*, dedicated to the treatment of wounds and skin diseases. Of the other four, the two largest, the *Ospedale Maggiore* and the *Brolo* hospital recorded 32 and 31 deaths respectively, while the *Sant'Ambrogio* hospital and the *Ospedale della Pietà* respectively 18 and 11. In the absence of information on the number of hospitalized persons in each hospital, it is not possible to go beyond this simple description of the data, which nevertheless confirm the presence of a widespread network of still active hospitals, destined to be progressively replaced by the large hospital wanted by Francesco Sforza.

Final considerations

This analysis is intended as a preliminary example of the possible use of the database.

The study aims is to propose an interdisciplinary approach to the MiSfoRe including Health Sciences, Human Sciences, and ICTs to provide epidemiological data within a historical and anthropological perspective.

A further aim is to apply this multi-level approach to other national sources of data on mortality and to create a network of information that could improve the knowledge of the interaction between social-demographical and biological mechanisms. The meticulousness of the description of symptoms and the information on the social context of the patients does reveal the strong relationship between individuals and the community conceived by Sforza. It would be impossible, also considering the experience of COVID-19 in Italy, in particular in Lombardy, to not envisage Sforza's

method as an example for the contemporary health protocols and policies based on proximity and a network of social ties of engagement which seem to level the social stratification of the community.

The return to the community of a virtuous historical experience appears to be of utmost importance for the rehabilitation of civil consciousness. Taking such a perspective into account, the Registers of Milan mirror sustainable social networking based on a fundamental chain of care. Presently the statistical registration for social aims and policies related to welfare and healthcare in Milan and Italy represents an example of heritage in the wake of Sforza's reform as, for instance, registrations reported on the "Epicentro" web portal (<https://www.epicentro.iss.it/#passi>). Such a national attitude endorses the aims of the national healthcare system according to our constitutional principles of health as a fundamental individual right.

In conclusion, Sforza's reform mirrored into the MiSfoRe contains, in a nutshell, the concept of health care which will be developed by the proto-industrial societies at the beginning of the 19th century. The reform exceeds, with four centuries in advance, community-oriented medical-patient management of the disease. Moreover, it anticipates the founding principles of the enlightened enterprises of the industrial era as the case of Olivetti's firm, which in the post-war period made small and medium-sized Italian companies competitive, foreseeing a causal link between physical well-being and productivity. A centuries-old outstanding heritage is returned then to scholars and society at large thanks to the synergy between digitization of archives, epidemiology, and human sciences.

Declaration of interest

No potential competing interest was reported by the authors

Acknowledgements

The Authors are grateful to Dr. Benedetto Luigi Compagnoni, Director of Archivio di Stato di Milano for letting access the *Mortuorum Libri*

Bibliography

- Albini, Giuliana. 1982. *Guerra, Fame, Peste: Crisi Di Mortalità e Sistema Sanitario Nella Lombardia Tardomedioevale*. Cappelli. 86-88.
- . 2016. 223 *Poveri e Povertà Nel Medioevo*. Carocci editore. 183-185, 195-201
- Alter, George C, and Ann G Carmichael. 1999. “Classifying the Dead: Toward a History of the Registration of Causes of Death.” *Journal of the History of Medicine and Allied Sciences* 54(2): 114–32.
- Bamji, Alexandra. 2016. “Medical Care in Early Modern Venice.” *Journal of Social History* 49(3): 483–509.
- Baron, J Hugh. 1990. “The Hospital of Santa Maria Della Scala, Siena, 1090-1990.” *BMJ: British Medical Journal* 301(6766): 1449.
- Borsieri de Kanilfeld, G. 1781. *Institutionum Medicinae Practicae*. Typ. Imp. Mon. S. Ambrosii Majoris.
- Bourgeois-Pichat, Jean. 1951. “La Mesure de La Mortalité Infantile. I. Principes et Méthodes.” *Population (french edition)*: 233–48.
- Boyce, Niall. 2020. “Bills of Mortality: Tracking Disease in Early Modern London.” *The Lancet* 395(10231): 1186–87.
- Chandler, Tertius. 1987. *Four Thousand Years of Urban Growth: An Historical Census*. Mellen.
- Cipolla, Carlo M. 1974. “I Libri Dei Morti.” *Le fonti della demografia storica in Italia* 1: 851–66.
- Cipolla, Carlo M. 1976. *Public Health and the Medical Profession in the Renaissance*. CUP Archive. 21-22
- Cipolla, Carlo M. 1978. “The ‘Bills of Mortality’ of Florence.” *Population studies* 32(3): 543–48.
- Cohn Samuel K, Jr, and Guido Alfani. 2007. “Households and Plague in Early Modern Italy.” *Journal of Interdisciplinary History* 38(2): 177–205.
- Colombo, Alessandro. 1955. “I TRENTASEI STENDARDI DI MILANO COMUNALE.” In *Almanacco Della Famiglia Meneghina*.
- D’Amico, Stefano. 1994. *Le Contrade e La Città: Sistema Produttivo e Spazio Urbano a Milano Fra Cinque e Seicento*. FrancoAngeli.

- Drevenstedt, Greg L, Eileen M Crimmins, Sarinnapha Vasunilashorn, and Caleb E Finch. 2008. "The Rise and Fall of Excess Male Infant Mortality." *Proceedings of the National Academy of Sciences* 105(13): 5016–21.
- Ferrario, Giuseppe. 1840. *2 Statistica Medica Di Milano Dal Secolo 15. Fino Ai Nostri Giorni*. Guglielmini & Redaelli.
- Finlay, Roger. 1981. *Population and Metropolis: The Demography of London 1580-1650*. Cambridge University Press.
- Gamberini A, Mangini M.L. 2020. *Quaderni Degli Studi Di Storia Medioevale e Di Diplomatica*. 3rd ed. ed. Pearson Italia. Pearson Italia.
- Heitman, Kristin. 2020. "Authority, Autonomy and the First London Bills of Mortality." *Centaurus* 62(2): 275–84.
- Humphrey, Louise, Silvia Bello, and Emily Rousham. 2012. "Sex Differences in Infant Mortality in Spitalfields, London, 1750–1839." *Journal of biosocial science* 44(1): 95–119.
- ISTAT, C D D. 2012. "Le Principali Cause Di Morte in Italia." https://www.istat.it/it/files/2014/12/Principali_cause_morte_2012.pdf. Accessed on October 5, 2021
- Katinis, Teodoro. 2007. *4 Medicina e Filosofia in Marsilio Ficino: Il Consilio Contro La Pestilenza*. Ed. di Storia e Letteratura.
- Leverotti, Franca. 1984. *Ricerche Sulle Origini Dell'Ospedale Maggiore Di Milano*. Società storica lombarda.
- Lewis, Mary E, and Rebecca Gowland. 2007. "Brief and Precarious Lives: Infant Mortality in Contrasting Sites from Medieval and Post-medieval England (AD 850–1859)." *American Journal of Physical Anthropology: The Official Publication of the American Association of Physical Anthropologists* 134(1): 117–29.
- Malanima, Paolo. 1998. "Italian Cities 1300-1800. A Quantitative Approach." *Rivista di storia economica* 14(2): 91–126.
- Manfredi, G. 2008. *Tractatus de Pestilentia (Curated by T. Durante)*. ed. Bologna: Clueb. Bologna: Clueb.
- Manuzi, Giuseppe. 1863. *Libro Della Cura Delle Febbri*. Tipografia del Vocabolario.
- Mazur, Dennis J. 2016. "Analyzing and Interpreting 'Imperfect' Big Data in the 1600s." *Big Data & Society* 3(1): 2053951715609082.
- Milano Città Stato, "Le 30 CONTRADE di Milano", Accessed June 14, 2021. <https://www.milanocittastato.it/evergreen/forse-non-sapevi-che/le-30-contrade-di-milano/>.

- Parenti, Giuseppe. 1943. "Fonti per Lo Studio Della Demografia Fiorentina: I Libri Dei Morti." *Genus*: 281–301.
- Pecchiai, Pio. 1926. *Guida Dell'Ospedale Maggiore Di Milano e Degli Istituti Annessi*. Stucchi Ceretti.
- Piccinni, Gabriella. 2013. "Documents for a History of the Hospital of Santa Maria Della Scala in Siena." *SVMMMA. Revista de Cultures Medievals* 1(2).
- QGIS Development Team (2021). QGIS Geographic Information System. Open Source Geospatial Foundation Project.<http://qgis.osgeo.org>"
- R Core Team (2021). R: A language and environment for statistical computing. R Foundation for Statistical Computing, Vienna, Austria. URL <https://www.R-project.org/>.
- Rollo-Koster, Joëlle. 2016. *Death in Medieval Europe: Death Scripted and Death Choreographed*. Taylor & Francis.
- Sennert, D. 1608. *De Febris Libri IV*. 3rd ed. Frankfurt and Wittenberg.
- Slauter, Will. 2011. "Write up Your Dead: The Bills of Mortality and the London Plague of 1665." *Media History* 17(1): 1–15.
- Smith, Robert S. 1936. "Barcelona" Bills of Mortality" and Population, 1457-1590." *Journal of political economy* 44(1): 84–93.
- Spruyt, Hendrik. 1996. *The Sovereign State and Its Competitors: An Analysis of Systems Change*. Princeton University Press.
- Stinson, Sara. 1985. "Sex Differences in Environmental Sensitivity during Growth and Development." *American Journal of Physical Anthropology* 28(S6): 123–47.
- Sutherland, Ian. 1963. "John Graunt: A Tercentenary Tribute." *Journal of the Royal Statistical Society: Series A (General)* 126(4): 537–56.
- Tucci, Michele. 2011. "For an Urban History of Milan, Italy: The Role of GIScience."
- Tucci, Michele, Rocco W Ronza, and Alberto Giordano. 2011. "Fragments from Many Pasts: Layering the Toponymic Tapestry of Milan." *Journal of Historical Geography* 37(3): 370–84.
- UK Data Service, "London weekly bills of mortality, 1644-1849", Accessed June, 14, 2021. <https://reshare.ukdataservice.ac.uk/854104/>
- Vaglianti, Folco. 2013. "Noluit Ire Ad Visum: I Segreti Dei Mortuorum Libri Di Milano Da

Francesco Sforza a Leonardo Da Vinci:(1452-1485).” In *La Popolazione Di Milano Dal Rinascimento: Fonti Documentarie e Fonti Materiali per Un Nuovo Umanesimo Scientifico*, Edizioni Biblioteca Francescana, 25–59.

Vaglianti, Folco. 2020a. “Marginalia. Esempi Di Umane Miserie Nei Registri Dei Morti Di Età Sforzesca.” *Studi di storia medioevale e di diplomatica-Nuova Serie*: 383–400.

———. 2020b. “Pratica Anatomica Ospedaliera a Milano Al Tempo Di Leonardo.” *Mefisto*», 4.1: 148–53.

De Vries, Jan. 2013. *European Urbanization, 1500-1800*. Routledge.

Zanetti, Dante E. 1976. “La Morte a Milano Nei Secoli XVI-XVIII.” *Rivista storica italiana* 4: 803–51.