

Gut microbiota link dietary fiber intake and short-chain fatty acid metabolism with eating behaviour

Evelyn Medawar¹, Sven-Bastiaan Haange², Ulrike Rolle-Kampczyk², Beatrice Engelmann², Arne Dietrich³, Ronja Thieleking¹, Charlotte Wiegank¹, Charlotte Fries⁴, Annette Horstmann^{1,5,6}, Arno Villringer^{1,7}, Martin von Bergen^{2,8}, Wiebke Fenske⁴, A. Veronica Witte^{1,7}

1 Max Planck Institute for Human Cognitive and Brain Sciences, Department of Neurology, Stephanstr. 1A, 04103 Leipzig, Germany

2 Department of Molecular Systems Biology, Helmholtz Centre for Environmental Research GmbH - UFZ, Permoserstraße 15, 04318 Leipzig, Germany

3 Department of Visceral and Metabolic Surgery, University Hospital Leipzig, Liebigstr. 18, 04103 Leipzig, Germany

4 Department of Endocrinology, Diabetes and Metabolism, University Hospital Bonn, Venusberg-Campus 1, 53127 Bonn, Germany

5 Department of Psychology and Logopedics, Faculty of Medicine, University of Helsinki, Helsinki, Finland

6 Faculty of Medicine, University of Leipzig, Leipzig, Germany

7 Clinic for Cognitive Neurology, University Hospital Leipzig, Leipzig, Germany

8 Institute of Biochemistry, Faculty of Life Sciences, University of Leipzig, Germany

Keywords: three-factor eating questionnaire, RYGB, bariatric surgery, acetate, butyrate, propionate, metabolomics, hunger, dietary fiber, bacterial genera, short-chain fatty acids

Significance of this study

What is already known about this subject?

- The gut microbiome may modulate brain function and eating behavior through production of short-chain fatty acids (SCFA) from dietary fiber.

What are the new findings?

- This cross-sectional exploratory study finds that the abundance of specific groups of bacterial genera, including *Parabacteroides*, correlate with eating behavior, diet, SCFA as well as weight status and obesity treatment success in two independent well-characterized samples.

How might it impact on clinical practice in the foreseeable future?

- These findings might help to develop novel hypotheses how to prevent and treat unhealthy food craving through microbial modulation of the gut-brain axis.

Abstract

Objectives: The gut microbiome modulates human brain function and eating behavior through multiple factors, including short-chain fatty acid (SCFA) signaling. We aimed to determine which bacterial genera relate to eating behavior, diet and SCFA metabolites in overweight adults. In addition, we tested whether eating-related microbiota predict treatment success in patients after bariatric surgery.

Design: Anthropometrics, eating behaviour measures and 16S-rRNA-derived microbiota abundance were correlated in young overweight adults (n=27 (9F), 21-36 years, BMI 25-31 kg/m²), and in patients two years after Roux-en-Y gastric bypass (n=23 (16F), 41-70 years, BMI 25-62 kg/m²) compared to matched overweight and obese controls (n=17 (11F), 26-69 years, BMI 25-48 kg/m²). Dietary fiber intake was assessed and SCFA were measured in feces and blood using mass spectrometry in young adults.

Results: In the young adults, 7 bacteria genera, i.e. *Alistipes*, *Blautia*, *Clostridiales cluster XVIII*, *Gemmiger*, *Roseburia*, *Ruminococcus* and *Streptococcus*, correlated with healthier eating behavior, while 5 genera, i.e. *Clostridiales cluster IV and XIVb*, *Collinsella*, *Fusicatenibacter* and *Parabacteroides*, correlated with unhealthier eating (all |r| > 0.4, FDR-corrected p < 0.05). Some of these genera including *Parabacteroides* related to fiber intake and SCFA metabolites, and to weight status and treatment response in obese patients.

Conclusion: Specific bacterial genera, particularly *Parabacteroides*, were reliably associated with weight status and eating behavior in two independent well-characterized cross-sectional samples. Together, these findings indicate two groups of presumably beneficial and unfavourable genera that relate to eating behaviour and weight status, and indicate that dietary fiber and SCFA metabolism may modify these relationships.

Introduction

Gut microbes modulate brain function and behavior via immune, endocrine, neural and humoral routes [1]. This could play a key role in neuronal feeding circuits and overeating, as dysbiosis of the microbiota composition has been documented in psychiatric eating disorders [2] and obesity [3].

However, nutrition- or body weight-related microbial changes and their functional relevance are still relatively unclear. In mice, gastric bypass-related differences in the microbiota profile, such as a higher abundance of the genera *Escherichia* (phylum *Proteobacteria*) and *Akkermansia* (phylum *Verrucomicrobia*), induced weight loss when transferred to germ-free animals [4]. In humans, bariatric surgery similarly led to higher overall microbiota diversity and to higher abundance of the species *Escherichia coli* and in some studies to further abundance changes within the phylum *Bacteroidetes*, such as a higher post-surgery ratio of the genera *Bacteroides to Prevotella* [5] and less *Firmicutes* (phylum level) or to more *Gammaproteobacteria* (class level) [6]. The ratio of *Bacteroides to Prevotella* at baseline predicted dietary weight loss success after 24 weeks in an intervention study in 80 overweight individuals [7]. Further, a one-week dietary intervention trial in 20 individuals found that microbial composition predicted glycemic response [8].

Human-to-mouse fecal transplant experiments further underline the causal role of specific microbiota to facilitate weight loss [9], and human-to-human microbiota transplantation experiments increased insulin sensitivity according to [10]. In a recent human study, accompanied by mouse model data, an individual's microbiota profile, extracted from fecal samples during periods of dietary weight loss, prevented weight regain when transferred back to the individual orally [11].

Mechanistic insights into how specific gut bacteria modulate human eating behaviour and weight status are still limited. The gut microbiota is supposed to affect the host's metabolism by altering energy extraction from food, and by modulating dietary or host-derived compounds that modify the metabolic pathways of the host [12]. For example, short-chain fatty acids (SCFA) are excreted by certain gut bacteria as a result of carbohydrate fermentation, and SCFA stimulate the secretion of anorexigenic hormones, such as peptide YY (peptide tyrosine tyrosine or PYY) and glucagon-like-peptide-1 (GLP-1) in the colon, which further signal to hypothalamic nuclei as one mechanism of homeostatic regulation [13]. SCFA can also cross the blood-brain-barrier and act as signaling molecules in the brain to directly modulate appetite and food-decision making [1]. First interventional studies showed that intake of butyrate (one type of SCFA) or the butyrate-producing bacteria *Akkermansia spp.* exert beneficial effects on body weight depending on treatment intention in humans [14] and on brain functions in mice [15], including reduced food intake [16]. Notably, specific pre-biotic nutrients, such as dietary fibers, are known to nourish SCFA-producing bacteria in the gut, rendering diet a potent modifier of gut-brain signalling [17]. In sum, the gut microbiome may influence feeding behaviour, e.g. by modulating reward and homeostatic signaling [18,19] and by stimulating the vagal nerve [20], in particular in dysregulated biological systems, such as in food addiction [21] or eating disorders [2]. Yet, direct knowledge if specific genera are linked to eating behavior via dietary intake and SCFA in humans is lacking. Here, we asked whether gut microbial diversity and genera abundance relate to eating behaviour, and to SCFA metabolites in the colon (feces) and in the periphery (blood) in a homogenous sample of young overweight adults. In addition, we tested whether the abundance of eating behavior-related microbiota differed between overweight and obesity in a sample of older adults and if they predict treatment success (i.e. achieved weight loss) in obese patients at two years after bariatric surgery.

Methods

Samples characteristics and data collection. We included cross-sectional data from two longitudinal studies, i.e. 1) healthy young overweight adults (n = 27 (9F), 21-36 years, BMI 25-31 kg/m²) (Clinical Trials registration NCT03829189), and 2) patients two years after Roux-en-Y gastric bypass (RYGB) surgery, with “good” (n = 11 (7F), 41-70 years, BMI 25-29 kg/m²) and “bad”, i.e. only little weight loss response (n = 12 (9F), 31-67 years, BMI 41-62 kg/m²), as well as age-, gender- and BMI-matched controls (overweight: n = 8 (5F), 41-58 years, BMI 25-29 kg/m²; obese: n = 9 (6F), 26-70 years, BMI 41-48 kg/m²). All participants completed anthropometric measurements and donated feces (see **SI**) for microbiota analysis (Shannon effective [22] and relative abundance of microbiota genera), underwent anthropometric measurements and filled in questionnaires to quantify eating behaviour traits. Sample 1 additionally provided blood, and SCFA (acetate, butyrate, propionate) were measured in feces and serum. Also, for sample 1, self-reported dietary fiber intake (g/day), computed from a standardized food frequency questionnaire and hunger ratings after overnight fasting and post-prandial to a standardized meal (10% of caloric need) (methods similar to [23]) were assessed.

Microbiota assessment.

To assess microbiota community structure we used 16S rRNA gene profiling of the fecal samples. Therefore, DNA was extracted and V3-V4 variable regions of the 16S rRNA genes were amplified by PCR and a library was constructed, followed by paired end 2x250bp Illumina sequencing. These analyses were done by GENEWIZ Germany GmbH, Leipzig). Next, the inhouse Galaxy server using a pipeline implemented with the DADA2 R package processed raw data in fastq format. For each sample, paired-end reads were joined, low-quality reads were removed, reads were corrected, chimeras removed and Amplicon Sequence Variants (ASVs) were obtained. Taxonomy was annotated to the ASVs using the RDP database [24]. The read counts per ASV with taxonomic annotation were normalized and relative abundances of each ASV and taxa were calculated using the R scripts Rhea. Visualization was done as in [25] by inhouse written R-tools using the ggplot2 R-package.

Eating behaviour.

To characterise eating behaviour traits, questionnaires based on self-report were used: the Three-Factor Eating Questionnaire (TFE-Q) (German version, [26]) and the Eating Disorder Examination Questionnaire (EDE-Q) (German version, [27]) were used for sample 1 and sample 2, respectively. The TFE-Q assesses three domains of eating behaviour (cognitive restraint, disinhibition, hunger), and the EDE-Q covers the subscales dietary restraint, eating concern, weight concern, and shape concern. Scoring was performed according to the respective manuals.

Additional analyses in sample 1

Hunger ratings and health indicators, i.e. blood pressure and body fat, as well as dietary intake were assessed (see **SI**). Blood was obtained in fasting state (12 ± 3h fasted) and samples were centrifuged at 3500 revolutions per minute at 7°C for 6 minutes. Serum was aliquoted within one hour of obtainment. Processed aliquots were stored at -80°C until data analysis. SCFA in blood and stool were analysed according to [28] (see **SI**).

Obesity surgery in sample 2

For sample 2, 23 morbidly obese patients were drawn from a larger pool of RYGB (see **SI**) patients from the University Hospital Leipzig, Germany (ethics proposal 027/17-ek), based on

their response to the surgical treatment. Specifically, patients were identified from the database if their surgery dated back at least 2 years (mean 53 months \pm 16.5 SD, range 25-76 months) and those were further divided in percentiles according to relative excessive weight loss (EWL) (good responders: sustained EWL > 60 %, mean 93% \pm 4 SD, range 86-98%, n = 12; bad responders: sustained EWL < 40 %, mean 20% \pm 13 SD, range 3-35%, n = 11).

Statistical analysis.

Correlational analysis. Relative taxa abundance (%) on the genera level was used as primary variables of interest. All analyses were performed in RStudio version 3.6.1. Non-normally distributed variables were log- or Tukey-transformed. For the main analysis, 20 out of 120 genera were included as they appeared in at least 80% of individuals [29] and fed into a correlation matrix with all main variables of interest in sample 1, i.e. TFEQ traits, hunger ratings, body fat, systolic blood pressure, dietary fiber intake and SCFA in feces and blood. All values were FDR-corrected and the statistical significance was set to $p < 0.05$. Those genera that were significantly associated with eating behavior (TFEQ traits and hunger ratings, FDR-corrected, $p < 0.05$) were then correlated with weight status and RYGB treatment success in sample 2. Group differences across overweight, obese, good and bad RYGB responders were tested with non-parametric Kruskal-Wallis tests. Further correlations were tested with Pearson's correlation coefficient r for normally distributed variables or with Spearman's rho for non-normally distributed variables.

To further investigate, if the interplay of correlated genera - rather as a holobiont than individually - is determinative of the observed relations, the relation between correlated to non-correlated genera was computed by three composite scores (1)-(3).

$$(1) \text{ positive sumscore (\%)} = (A + B + C18 + G + Ro + Ru + S)$$

$$(2) \text{ negative sumscore (\%)} = (C4 + C14b + C + F + P)$$

$$(3) \text{ composite sumscore (\%)} = (1) - (2)$$

Here, higher scores signify an overall healthier profile with regard to eating behaviour.

Mediation Analysis. Using simple mediation analysis with in RStudio version 3.6.1 using medmod() we checked for statistical mediation in sample 1 for variables showing bivariate correlations in the following paths:

- i) fiber \rightarrow correlated genera or sumscores \rightarrow eating behaviour (TFEQ, hunger ratings)
- ii) eating behaviour (TFEQ, hunger ratings) \rightarrow fiber \rightarrow correlated genera or sumscores
- iii) correlated genera or sumscores \rightarrow SCFA \rightarrow eating behaviour (TFEQ, hunger ratings)

Significance was set to $p < 0.05$, and in the main analysis for sample 1 we corrected for multiple testing using the false-detection rate (FDR)-correction.

Results

Characteristics of sample 1 and 2 are listed below (see **Table 1-2**). Eating behaviour traits varied across both samples, and in sample 2, restrained eating and shape/weight concerns differed between those that achieved long-term excessive weight loss after bariatric surgery compared to those that did not (good vs. bad responders, all $W > 58.5$, $p < 0.001$, **Tab. 2, Suppl. Figures 1**).

Table 1: Descriptives for sample 1.

	<i>Sample 1</i>			
<i>n, sex (F/M)</i>	27 (9F/18 M)			
	<i>mean</i>	<i>SD</i>	<i>minimum</i>	<i>maximum</i>
<i>age (years)</i>	28.4	4.5	21	36
<i>education (SES index)</i> <i>(score from 3 to 21)</i> <i>(four NAs)</i>	15.0	2.8	8.2	19.2
<i>BMI (kg/m2)</i>	27.7	1.7	25.0	31.2
<i>TFEQ cognitive restraint (sum score)</i>	5.6	4.1	0	13
<i>TFEQ disinhibition (sum score)</i>	6.0	2.1	2	11
<i>TFEQ hunger (sum score)</i>	5.0	3.4	0	12
<i>time fasted (h)</i>	12.5	2.7	6	18
<i>hunger 15min postprandial (1-8 scale)</i>	4.2	1.7	1	7
<i>hunger 40min postprandial (1-8 scale)</i>	5.3	1.3	2	7
<i>hunger 65min postprandial (1-8 scale)</i>	5.3	1.4	2	8
<i>mean systolic blood pressure (mmHg)</i>	128.0	10.9	107.0	152.7
<i>% fat mass (female, male)</i>	34.7 (F) 22.8 (M)	4.2 (F) 5.2 (M)	27.3 (F) 7.6 (M)	39.8 (F) 30.7 (M)
<i>habitual fiber intake / 1000 kcal / d (g)</i>	10.4	3.6	4.4	20.0

Table 2: Descriptives for sample 2.

	<i>overweight</i>				<i>obese</i>				<i>good responders</i>				<i>bad responders</i>				<i>group comparison</i>
n, sex (F/M)	8 (5F/3M)				9 (6F/3M)				11 (7F/4M)				12 (9F/3M)				F/t, p
	<i>mean</i>	<i>SD</i>	<i>minimum</i>	<i>maximum</i>	<i>mean</i>	<i>SD</i>	<i>minimum</i>	<i>maximum</i>	<i>mean</i>	<i>SD</i>	<i>minimum</i>	<i>maximum</i>	<i>mean</i>	<i>SD</i>	<i>minimum</i>	<i>maximum</i>	4 groups / RYGB only
age (years)	53	4.3	44	58	54	14.8	26	69	51.9	9.4	41	70	54.1	11	31	67	W=1.83, p = 0.61
BMI (kg/m2) (pre-surgery)	-	-	-	-	-	-	-	-	45.5	7.2	34.6	61	52.7	6.6	41.6	63.6	W=4.74, p = 0.03
BMI (kg/m2) (>2 years post-surgery)	27.0	1.1	25.9	29.2	45.0	2.7	41.5	47.8	26.3	0.9	25.1	27.9	47.2	6.4	41	61.9	W=28.6, p < 0.001
time post surgery (months)	-	-	-	-	-	-	-	-	51.3	15.1	25.7	74.2	55.4 2	18.5	25.3	76.2	W=105, p = 0.54
EDEQ restraint (mean score)	-	-	-	-	-	-	-	-	0.46	1.1	0	3.6	2.1	1.5	0	5	W=72.5 p = 0.003
EDEQ eating concern (mean score)	-	-	-	-	-	-	-	-	0.26	0.3	0	0.6	0.9	0.9	0	3	W=84.5, p = 0.043
EDEQ weight concern (mean score)	-	-	-	-	-	-	-	-	0.56	1	0	3.2	3.3	1.1	1.4	5	W=60, p < 0.001
EDEQ shape concern (mean score)	-	-	-	-	-	-	-	-	1.1	1	0	3.3	4.2	1.1	1.5	5.5	W=58.5, p < 0.001

Overall microbiota diversity at the phylum level was relatively comparable across participants of samples 1 and 2 except higher ratio of Firmicutes to Bacteroidetes in sample 1, and Prevotellaceae and Fusobacteriaceae families were more abundant in patients after RYGB surgery (Figure 1, see SI for details).

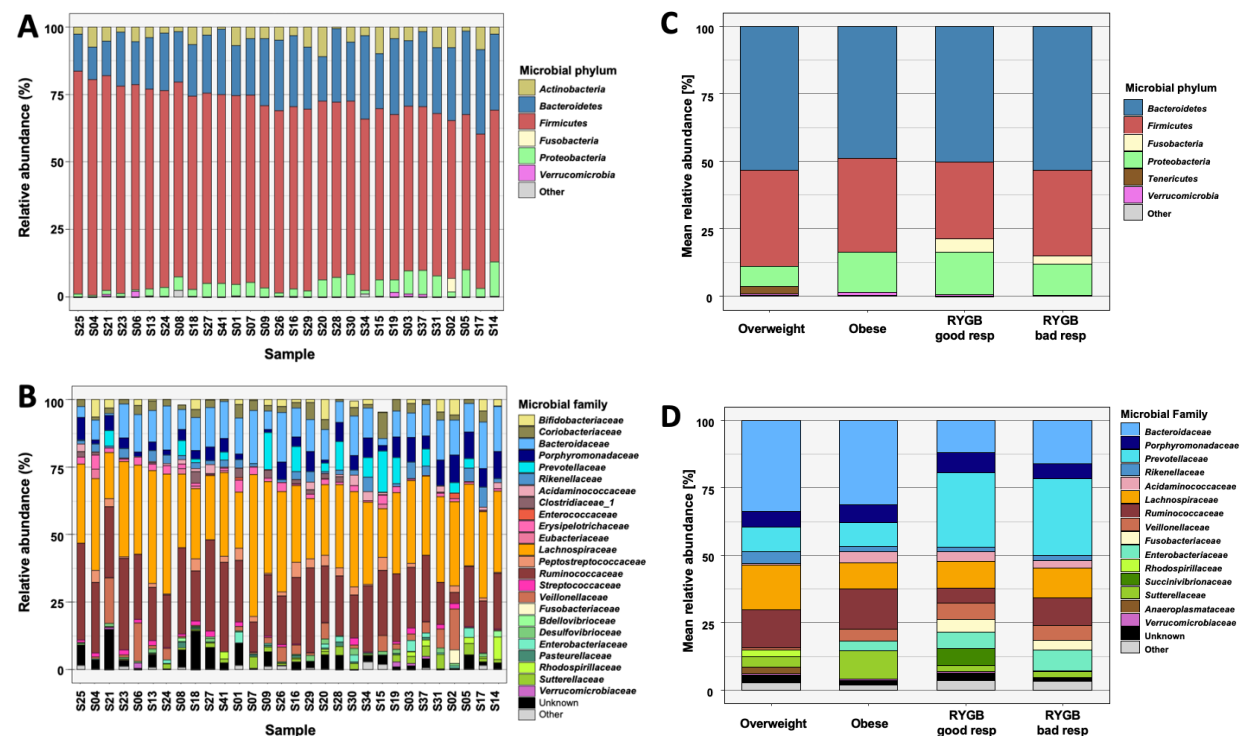


Figure 1: Relative abundance per subject or per group on microbial phylum (A,C) and family level (B,D) (sorted by Firmicutes abundance).

Microbiota, eating behaviour traits and health indicators in overweight adults

In sample 1, higher relative abundance of *Collinsella* (phylum Actinobacteria), *Clostridium* IV and XIVb, *Fusicatenibacter* (all three phylum Firmicutes) and *Parabacteroides* (phylum Bacteroidetes) were related to less healthy eating behaviour (higher TFEQ scores and/or higher hunger ratings, all $0.61 < |r| > 0.42$, $p\text{-FDR} < 0.05$, **Figure 2A**). Contrastingly, higher relative abundance of the microbial genera *Alistipes* (phylum Bacteroidetes), *Blautia*, *Clostridium* XVIII, *Gemmiger*, *Roseburia*, *Ruminococcus* and *Streptococcus* (all phylum Firmicutes) correlated with healthier eating behaviour (all $0.76 < |r| > 0.42$, $p\text{-FDR} < 0.05$, **Figure 2B**, **Suppl. Figure 4**).

Further, *Collinsella* abundance significantly correlated with higher body fat mass (sex-standardized, $r = 0.61$, $p < 0.001$, **Figure 2C**). *Streptococcus* abundance was significantly correlated with lower mean systolic blood pressure ($r = -0.70$, $p\text{-FDR} < 0.001$, **Figure 2D**).

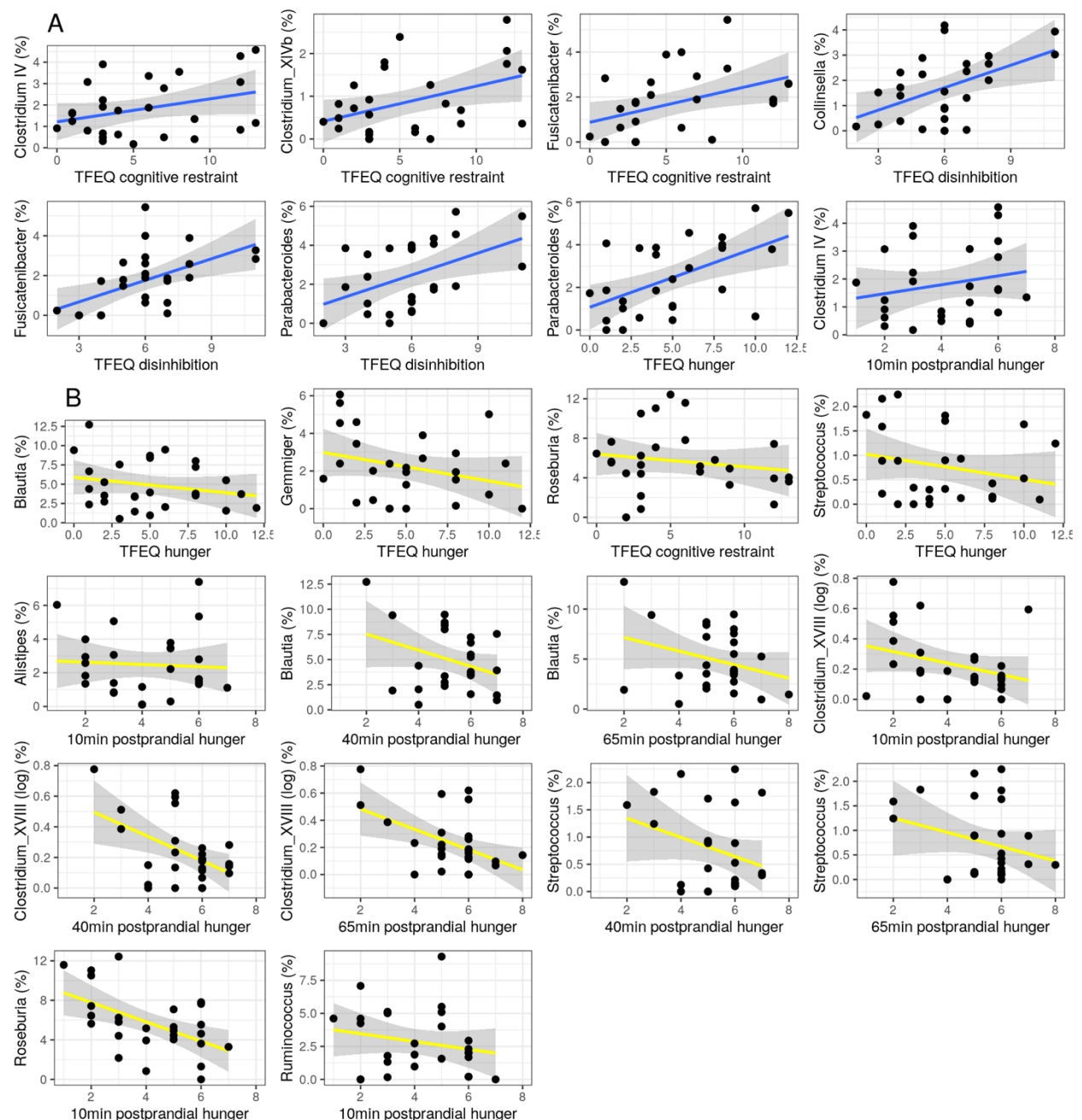


Figure 2: Correlations between eating behaviour traits (TFEQ and hunger ratings) or health indicators and bacterial genera in overweight adults (all $|r| > 0.42$, all $p\text{-FDR} < 0.05$; sample 1). A: inversely health-related genera; B: health-related genera. C: *Collinsella* and body fat mass; D: *Streptococcus* and mean systolic blood pressure.

Relation to dietary fiber intake and SCFA

Out of the 12 genera that were significantly associated with eating behaviour (from now on called “(inversely) health-related” genera), three were associated with lower (*Collinsella* and *Parabacteroides*) or higher (*Clostridium XVIII*) dietary fiber intake (all $0.73 < |r| > 0.49$, $p\text{-FDR} < 0.05$, **Figure 3A-C**). Moreover, higher dietary fiber intake per se was significantly associated with lower disinhibited eating ($r = -0.58$, $p\text{-FDR} < 0.01$) and lower body fat mass ($r = -0.75$, $p\text{-FDR} < 0.0001$, **Figure 3D-E**).

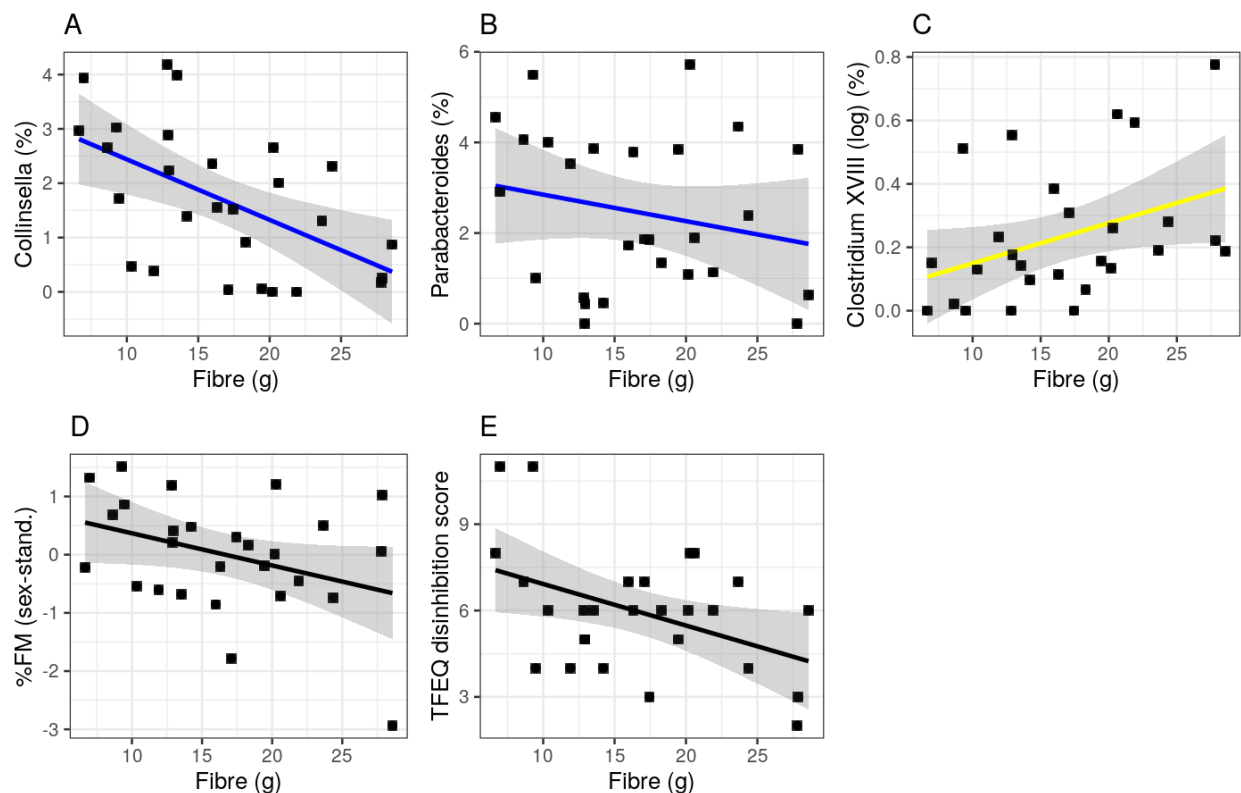


Figure 3: Associations between fiber intake and inversely health-related genera (A-B), health-related genera (C), body fat mass (D) and eating trait disinhibition (E) (Pearson's correlation all $0.75 < |r| > 0.58$, all p-FDR < 0.05 ; sample 1 n=27).

SCFA concentrations in feces were highly variable and up to ~1000 times higher in serum for all three measured SCFA (all $t(24) > 11.6$, $p < 0.001$). Serum acetate was 2.5 times higher compared to butyrate and propionate in serum (**Suppl. Table 1**).

We observed that higher abundance of some of the inversely health-related genera correlated with higher levels of different SCFA in feces and serum (all $r > 0.50$, p-FDR < 0.01). In addition, most health-related genera correlated with some feces and serum SCFA markers, however revealing both positive and negative associations (only those associated with eating behaviour were considered, all $0.65 < |r| > 0.44$, p-FDR < 0.05 , **Suppl. Figure 5**). Note, that some genera showed differential correlations within the different SCFA, e.g. higher *Alistipes* correlated with higher acetate in both feces and serum and with fecal butyrate, but with lower fecal propionate. Moreover, considering the inversely correlated genera, *Fusicatenibacter* and *Parabacteroides* correlated significantly with higher fecal concentrations of propionate and acetate, respectively.

Also, higher fecal propionate levels correlated significantly with higher cognitive restraint eating ($r = 0.50$, p-FDR = 0.014, **Figure 4A**). Higher fecal acetate, butyrate and propionate levels correlated with higher hunger ratings (all $r > 0.45$, all p-FDR < 0.04), but also serum propionate with hunger ($r = 0.45$, p-FDR = 0.03). Moreover, serum acetate and butyrate were inversely associated with body fat mass (all $r > -0.43$, all p-FDR < 0.04) (**Figure 4B-C**). Notably, serum levels did not correlate with fecal SCFA concentrations (all $r < |0.17|$, all p-uncorr < 0.86 , **Suppl. Figure 6**).

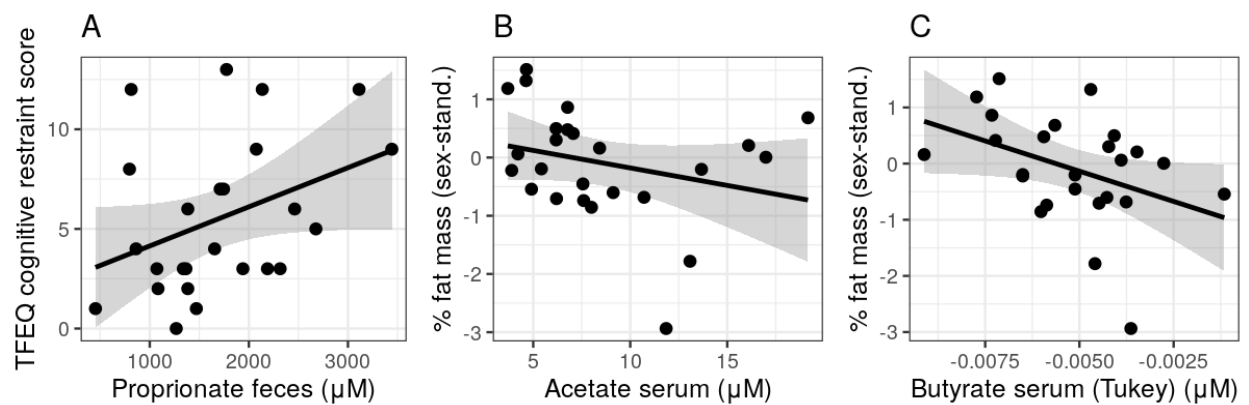


Figure 4: Associations of SCFA levels in feces and eating traits (A) and serum (B-C) and body fat mass.

Genera sum score and mediation analyses

The negative sumscore of the five inversely health-related genera abundance resulted in significant correlations for two of the eating traits (cognitive restraint $r = 0.59$, $p_{\text{uncorr}} = 0.001$; disinhibition $r = 0.65$, $p_{\text{uncorr}} < 0.001$, **Figure 5A-B**). The positive sumscore of the seven health-related genera showed no significant associations (all $p_{\text{uncorr}} > 0.95$, **Suppl. Figure 7**). Neither sumscore correlated with fecal or serum SCFA levels.

Exploratory mediation path analyses of the proposed models did not show statistically significant mediating paths for differences in diet, eating behaviour or hunger ratings through differences in *Parabacteroides* or positive/negative sumscores (**Suppl. Table 2-3**). Considering SCFA, similar results emerged, except for acetate: Here, while the direct effect c' did not reach significance ($\beta = -0.3$, $p = 0.13$), higher *Parabacteroides* abundance was linked with higher postprandial hunger ratings through higher fecal acetate levels (indirect effect, $a*b$, $\beta = 0.36$, 95% CI [0.05 0.66], $p = 0.02$, **Suppl. Table 4**).

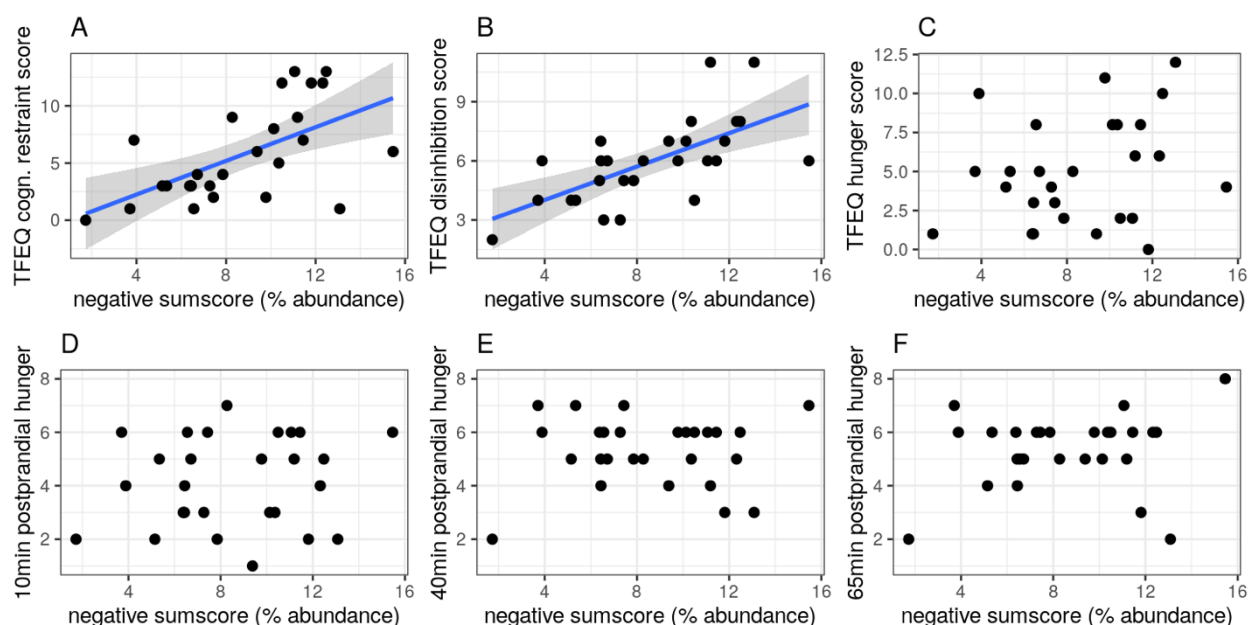


Figure 5: Correlations between microbial genera sumscore for inversely health-related genera with respect to eating behaviour outcomes.

Mircobiota genera differences between overweight, obese and surgery groups.

In sample 2, two of the five inversely health-related genera identified in sample 1 were significantly different between groups (all $H(3) > 9.5$, $p < 0.023$) with lower relative abundance of *Parabacteroides* in good vs. bad responders ($H(1) = 4.9$, $p = 0.027$) **Figure 6**). In addition, six of the seven health-related genera identified in sample 1 were more abundant in the overweight group (all $H(3) > 8.3$, $p < 0.036$, **Figure 7**), but did not differ in the good vs. bad RYGB responders.

Considering the sumscores, we found that both sumscores differed between groups (**Figure 8**, all $H(3) > 11.3$, $p < 0.01$) with the negative sumscore showing higher values in the bad vs. good RYGB responders ($H(1) = 2.1$, $p = 0.036$). In addition, both the positive (n.s.; $H(1) = 1.9$, $p = 0.05$) and the negative sumscore ($H(1) = 2.02$, $p = 0.043$) showed higher values in overweight vs. obese participants.

Bad vs. good RYGB responders showed higher eating restraint scores ($H = 5.3$, $p = 0.022$, **Suppl. Figure 1**), and higher scores correlated with higher *Parabacteroides* abundance in these groups ($r = 0.44$, $p = 0.039$, **Figure 9A**). Moreover, lower *Parabacteroides* abundance correlated significantly with higher weight loss after surgery ($r = 0.49$, $p = 0.019$, $n = 20$, **Figure 9B**). The negative sumscore correlated with unhealthier eating behaviour (**Figure 9C**, mean of all EDEQ subscales, $r = 0.47$, $p = 0.027$; EDEQ restraint, $r = 0.49$, $p = 0.022$) and with less weight loss after surgery (**Figure 9D**, weight, $r = 0.53$, $p = 0.011$, BMI, $r = 0.53$, $p = 0.011$).

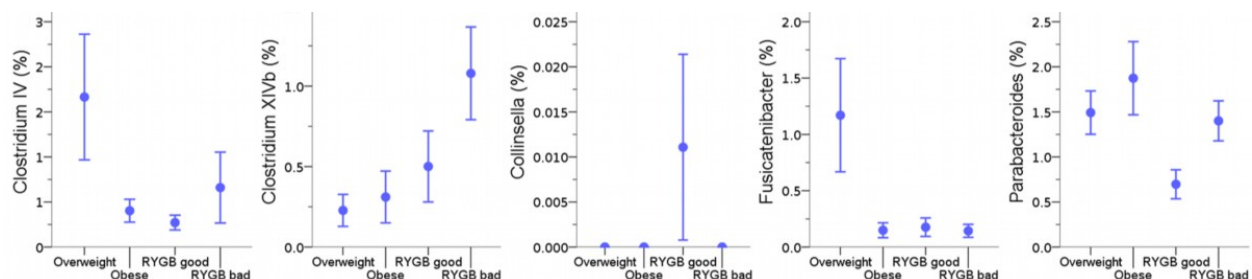


Figure 6: Differences in relative bacterial abundance across groups in sample 2 for inversely health-related genera detected in sample 1.

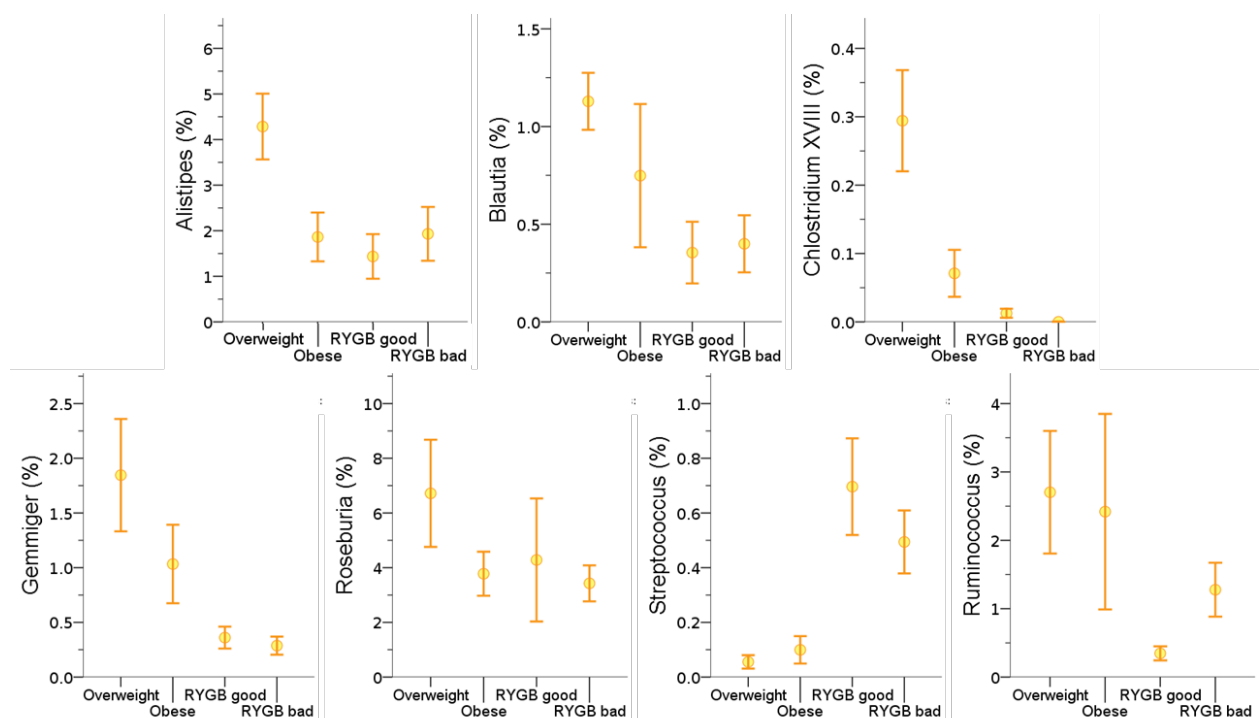


Figure 7: Differences in relative bacterial abundance across groups in sample 2 for positively-related genera detected in sample 1.

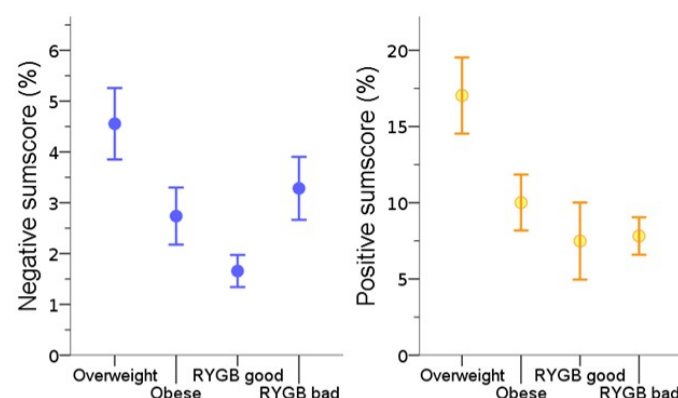


Figure 8: Differences in relative bacterial abundance across groups in sample 2 for positive and negative sumscores of all related genera detected in sample 1.

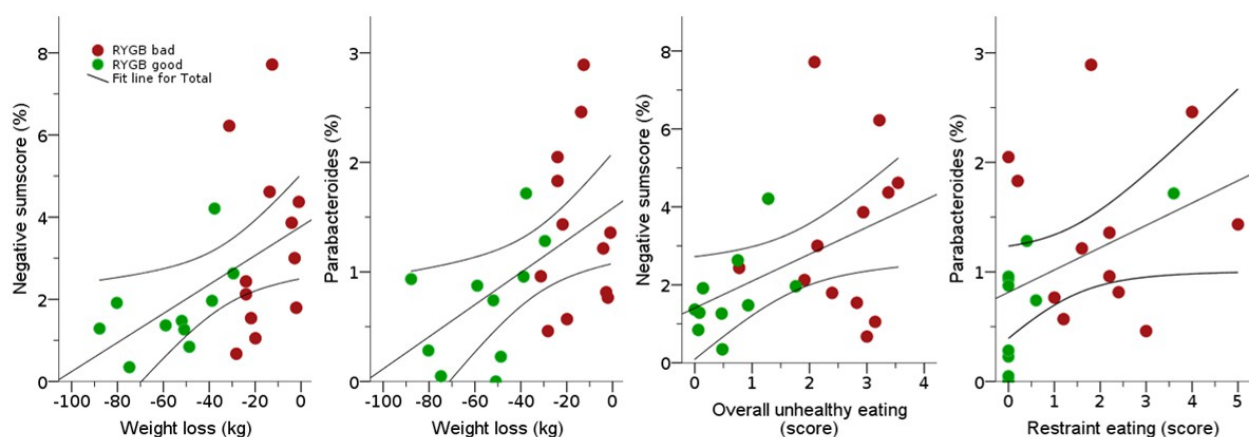


Figure 9: Negative genera sumscore and *Parabacteroides* abundance link to unhealthier eating behavior and less weight loss after RYGB surgery. RYGB, Roux-en-Y gastric bypass.

Discussion

Combining data from two human cross-sectional datasets, we find two groups of microbiota genera that were either positively or inversely associated with both healthier eating behaviour and anthropometrics (1) in a deeply phenotyped sample of young overweight adults and (2) when comparing patients showing a good or bad response two years after bariatric surgery with matched controls, respectively. More specifically, in young overweight adults, 7 bacterial genera, i.e. *Alistipes*, *Blautia*, *Clostridium XVIII*, *Gemmiger*, *Roseburia*, *Ruminococcus* and *Streptococcus*, correlated with healthier eating behaviour traits and lower subjective hunger ratings, indicating potential benefits for the host metabolism, while 5 bacterial genera, i.e. *Clostridium IV*, *Clostridium XIVb*, *Collinsella*, *Fusicatenibacter* and *Parabacteroides*, correlated with unhealthier eating traits and higher subjective hunger ratings. *Collinsella* was further related to higher body fat mass and *Streptococcus* to lower systolic blood pressure. The positively health-related bacterial genera were also more abundant in the overweight good responder controls, compared to the obese bad responder controls and RYGB-operated patients, while the negatively health-related genera showed a less clear distribution across groups, with *Parabacteroides* being significantly less abundant in good vs. bad RYGB-operated patients. Moreover, relative abundance of *Parabacteroides* as well as a composite score of all negatively correlated genera, were associated with higher eating restraint and with lower post-operative weight loss across both RYGB groups. Considering diet and SCFA-related pathways, we observed that higher dietary fiber intake in overweight adults correlated with more abundant *Clostridium XVIII*, and less abundant *Collinsella* and *Parabacteroides*, as well as with healthier eating behaviour and anthropometrics. While SCFA showed a rather mixed pattern of correlations with the different markers, *Fusicatenibacter* and *Parabacteroides* abundance correlated with higher fecal propionate and acetate, respectively, that again correlated with elevated hunger. Contrastingly, higher acetate and butyrate in serum correlated with lower fat mass, indicating a possible inverse association of acetate in feces and serum with respect to health indicators. Together, these results indicate that presumably beneficial and unfavourable microbiota genera relate to eating behaviour and weight status, and that dietary fiber intake and SCFA metabolism may modify these relationships.

Bacterial genera

The positively correlated microbiota group is comprised of bacterial genera that have been described as beneficial for the host in previous literature. For example, *Alistipes* and *Blautia* were found to produce SCFA [30,31]. Similarly, *Gemmiger*, *Roseburia*, and *Ruminococcus* belong to the families of Ruminococcaceae or Lachnospiraceae, which share a common role as active plant degraders [32]. These positive metabolic effects on the host could eventually contribute to improved adiposity control, as e.g. higher *Blautia* was correlated to lower body fat [33], *Roseburia* was linked to lower blood glucose and *Ruminococcus* to higher weight loss in mice after vertical sleeve gastrectomy via regulation of nuclear receptor binding of bile acids [34]. A microbial transfer study from human to mice showed obesity-promoting effects of the species *C. ramosum*, which is part of *Clostridium XVIII* [35]. However, studies on the genera *Clostridium XVIII* and *Streptococcus* in relation to health are scarce. Clostridia are known to be key commensals for gut homeostasis [36], but classification of the genus *Clostridium* remains challenging due to the high heterogeneity of the listed species [37]. Also, there are currently 50 species identified in the genus *Streptococcus* alone, rendering different functionality in these genera likely. Yet, we found that *Clostridium XVIII* abundance related to higher dietary fiber intake, and *Streptococcus* abundance to lower blood pressure. Indeed, fiber intake related to

healthy eating behaviour and lower body fat mass in overweight young adults in the present analyses may point towards rather beneficial fiber-correlating *Clostridium XVIII* and *Streptococcus* genera species that underly those associations. Moreover, these results underline the potential impact of a fiber-rich diet for health indicators. Due to the exclusive occurrence of fiber in plants, fiber-rich diets are oftentimes attributed to plant-based (vegetarian or vegan) diets, and plant-based diets have been shown extensively to be beneficial for weight status, gut and overall health [38,39].

Considering the negatively correlated group of microbiota, some genera were described to include pathogens, e.g. in *Clostridium XIVb* the species *C. piliforme*, the causative agent of Tyzzer's disease [40] and *Parabacteroides* as an opportunistic pathogen in infectious diseases [41]. Of note, in the *Parabacteroides* genera, also beneficial species, e.g. *P. distasonis*, have been described [42]. The anaerobic *Collinsella* colonizes mucosal surfaces and has recently been reported to degrade potentially toxic food contaminants found in processed foods [43]. While this could be beneficial for the host, unhealthier eating behaviors (such as intake of processed food) and higher body weight could then likely be related to higher abundances of *Collinsella*. Likewise, studies showed that *Collinsella* linked to less dietary fiber intake, which is in line with our results in overweight adults, and higher weight loss in cross-sectional [44] and dietary intervention studies [45]. *Fusicatenibacter*, including the species *F. saccharivorans*, are strictly anaerobic sugar fermenters, again linking to unhealthier eating behaviour and obesity [46]. The genus *Clostridium IV* however has rather been reported as beneficial SCFA producers, e.g. the species *Faecalibacterium prausnitzii* (*F. prausnitzii*), which play a noticeable role in intestinal homeostasis [47]. Yet again, those genera comprise many different species and it can also be speculated that some bacteria species or genera underlying the observed correlations could have likely been taxonomically misplaced [40]. Taken together, the negatively correlating microbiota genera seem to consist on the one hand of pathogens, indicative of a rather pro-inflammatory milieu in participants with higher weight status, which is well in line with our findings showing that higher *Parabacteroides* correlated with unhealthier eating traits and poorer weight loss maintenance in RYGB patients. On the other hand, those negatively correlating genera are comprised of those bacteria that metabolize processed food and sugars, again indicative of higher weight and unhealthy eating behaviour. Future studies now need to integrate microbiota data at the species level and randomized interventional trials are required to eventually understand cause and effect of these eating behaviour - microbiota - diet interactions.

SCFA metabolism

We could not establish reliable links between serum and fecal concentrations of those metabolites. The overall weak relationship could have been expected as for example butyrate is rapidly absorbed by the gut mucosa and reaches blood circulation [48], therefore, fecal levels of butyrate may not directly relate to butyrate-producing bacteria abundance nor to serum levels of butyrate. In addition, biosamples of serum and feces were not collected in a time-locked way, therefore a time difference of hours to days might have blurred potential (anti-) correlations. Indeed, it has been shown, that fecal SCFA levels decrease throughout the day due to metabolism and that overnight-fast duration influenced these results [49].

Still, we found that higher fecal SCFA levels (i.e., acetate, butyrate and propionate) linked to higher subjective hunger ratings and also to higher cognitive restraint (i.e. propionate), whereas lower acetate and butyrate in serum correlated with higher fat mass. Statistical path analyses proposed that higher *Parabacteroides* abundance link to higher hunger through higher fecal

acetate. Bearing in mind that higher fecal SCFA levels may indicate less efficient absorption in the gut, leading to lower SCFA availability in serum [50], these findings are somewhat in line with studies showing reduced appetite and less weight gain after acetate intake [1,51]. Note however, that we did not adjust mediation statistics for multiple testings, rendering false positives likely. In addition, it has been discussed that only a minimal fraction of the colon-derived SCFA directly reaches the brain. Instead, more downstream targets of SCFA signalling might be more important for gut-brain communication, such as SCFA-induced release of GLP-1 and PYY at the gut epithelium, modulation of liver metabolism or indirect signaling via the vagus nerve [1]. Future studies could help to further disentangle the different mechanisms at play by assessing further blood-, tissue- or imaging-based biomarkers of these pathways.

Limitations

Firstly, all analyses are exploratory based on cross-sectional data, therefore no conclusions about causal relationships can be drawn. In addition, both samples are limited by size, especially with regard to the number of variables of interest. Due to these constraints, more elaborate statistical analyses (such as structural equation modelling) could not be performed. A major strength of this study is the inclusion of two independent samples integrating next generation sequencing and SCFA metabolomics with psychological markers in well-characterized adults at risk for future weight gain that yielded similar associations of eating behaviour with gut microbiota at the genera level.

Conclusion

The combination of data from cross-sectional samples of overweight, obese and post-bariatric surgery individuals showed robust and multivariate associations between specific bacterial gut genera, particularly beneficial SCFA-producing genera and presumably unfavourable pathogens or sugar-/processed-food digesting bacteria, with anthropometrics, eating traits and dietary fiber intake. While speculative concerning causality, our results propose key microbiota candidates for diet-gut-brain-behaviour interactions in humans and may help to develop novel hypotheses how to prevent and treat unhealthy food craving through microbial modulation of the gut-brain axis. Longitudinal and interventional studies integrating metagenomic approaches and functional pathway analysis are needed to disentangle correlation from causality and to further characterize eating behaviour-relevant microbiota genera at the species level.

Acknowledgments

We would like to thank all participants and staff of the study team, in particular Laura Hesse, Emmy Töws, Linda Grasser and Mathis Lammert. This work was supported by grants of the German Research Foundation, contract grant number CRC 1052 “Obesity mechanisms”, project number 209933838, subprojects A1 (AV), A5 (AH), AOBJ: 624808 (WF), WI 3342/3-1 (AVW), IFB AdiposityDiseases FKZ: 01EO1501 (AH, WF), by the Else Kröner-Fresenius Foundation (WF), by the German Federal Environmental Foundation (EM) and by the Max Planck Society.

Competing Interests Statement

The authors declare that the research was conducted in the absence of any commercial or financial relationships that could be construed as a potential conflict of interest.

References

- 1 Dalile B, Van Oudenhove L, Vervliet B, *et al.* The role of short-chain fatty acids in microbiota–gut–brain communication. *Nat Rev Gastroenterol Hepatol* Published Online First: 23 May 2019. doi:10.1038/s41575-019-0157-3
- 2 Seitz J, Trinh S, Herpertz-Dahlmann B. The microbiome and eating disorders. *Psychiatr Clin* 2019;**42**:93–103.
- 3 Muscogiuri G, Cantone E, Cassarano S, *et al.* Gut microbiota: a new path to treat obesity. *Int J Obes Suppl* 2019;**9**:10–9. doi:10.1038/s41367-019-0011-7
- 4 Liou AP, Paziuk M, Luevano JM, *et al.* Conserved shifts in the gut microbiota due to gastric bypass reduce host weight and adiposity. *Sci Transl Med* 2013;**5**. doi:10.1126/scitranslmed.3005687
- 5 Furet JP, Kong LC, Tap J, *et al.* Differential adaptation of human gut microbiota to bariatric surgery-induced weight loss: Links with metabolic and low-grade inflammation markers. *Diabetes* 2010;**59**:3049–57. doi:10.2337/db10-0253
- 6 Tremaroli V, Karlsson F, Werling M, *et al.* Roux-en-Y Gastric Bypass and Vertical Banded Gastroplasty Induce Long-Term Changes on the Human Gut Microbiome Contributing to Fat Mass Regulation. *Cell Metab* 2015;**22**:228–38. doi:10.1016/j.cmet.2015.07.009
- 7 Hjorth MF, Blædel T, Bendtsen LQ, *et al.* Prevotella-to-Bacteroides ratio predicts body weight and fat loss success on 24-week diets varying in macronutrient composition and dietary fiber: results from a post-hoc analysis. *Int J Obes* 2019;**43**:149–57. doi:10.1038/s41366-018-0093-2
- 8 Korem T, Zeevi D, Zmora N, *et al.* Bread Affects Clinical Parameters and Induces Gut Microbiome-Associated Personal Glycemic Responses. *Cell Metab* 2017;**25**:1243–1253.e5. doi:10.1016/j.cmet.2017.05.002
- 9 Ridaura VK, Faith JJ, Rey FE, *et al.* Gut microbiota from twins discordant for obesity modulate metabolism in mice. *Science (80-)* 2013;**341**. doi:10.1126/science.1241214
- 10 Vrieze A, Van Nood E, Holleman F, *et al.* Transfer of intestinal microbiota from lean donors increases insulin sensitivity in individuals with metabolic syndrome. *Gastroenterology* 2012;**143**. doi:10.1053/j.gastro.2012.06.031
- 11 Rinott E, Youngster I, Meir AY, *et al.* Effects of Diet-Modulated Autologous Fecal Microbiota Transplantation on Weight Regain. *Gastroenterology* 2020;**160**:158–173.e10. doi:10.1053/j.gastro.2020.08.041
- 12 Kolodziejczyk AA, Zheng D, Elinav E. Diet–microbiota interactions and personalized nutrition. *Nat. Rev. Microbiol.* 2019;**17**:742–53. doi:10.1038/s41579-019-0256-8
- 13 Chambers ES, Morrison DJ, Frost G. Control of appetite and energy intake by SCFA: What are the potential underlying mechanisms? In: *Proceedings of the Nutrition Society*. Cambridge University Press 2015. 328–36. doi:10.1017/S0029665114001657
- 14 Depommier C, Everard A, Druart C, *et al.* Supplementation with Akkermansia muciniphila in overweight and obese human volunteers: a proof-of-concept exploratory study. *Nat Med* 2019;**25**:1096–103. doi:10.1038/s41591-019-0495-2
- 15 Arnoldussen IAC, Wiesmann M, Pelgrim CE, *et al.* Butyrate restores HFD-induced adaptations in brain function and metabolism in mid-adult obese mice. *Int J Obes* 2017;**41**:935–44. doi:10.1038/ijo.2017.52
- 16 Lin H V., Frassetto A, Kowalik Jr EJ, *et al.* Butyrate and Propionate Protect against Diet-Induced Obesity and Regulate Gut Hormones via Free Fatty Acid Receptor 3-Independent Mechanisms. *PLoS One* 2012;**7**:e35240. doi:10.1371/journal.pone.0035240
- 17 Marques FZ, Mackay CR, Kaye DM. Beyond gut feelings: how the gut microbiota regulates blood

- pressure. Published Online First: 2017. doi:10.1038/nrcardio.2017.120
- 18 Zanchi D, Depoorter A, Egloff L, *et al.* The impact of gut hormones on the neural circuit of appetite and satiety: A systematic review. *Neurosci. Biobehav. Rev.* 2017;**80**:457–75. doi:10.1016/j.neubiorev.2017.06.013
- 19 Alcock J, Maley CC, Aktipis CA. Is eating behavior manipulated by the gastrointestinal microbiota? Evolutionary pressures and potential mechanisms. *BioEssays.* 2014;**36**:940–9. doi:10.1002/bies.201400071
- 20 Goswami C, Iwasaki Y, Yada T. Short-chain fatty acids suppress food intake by activating vagal afferent neurons. *J Nutr Biochem* 2018;**57**:130–5. doi:10.1016/j.jnutbio.2018.03.009
- 21 Gupta A, Osadchiy V, Mayer EA. Brain–gut–microbiome interactions in obesity and food addiction. *Nat. Rev. Gastroenterol. Hepatol.* 2020;**17**:655–72. doi:10.1038/s41575-020-0341-5
- 22 Spellerberg IF, Fedor PJ. A tribute to Claude Shannon (1916–2001) and a plea for more rigorous use of species richness, species diversity and the ‘Shannon–Wiener’ Index. *Glob Ecol Biogeogr* 2003;**12**:177–9.
- 23 Healey G, Murphy R, Butts C, *et al.* Habitual dietary fibre intake influences gut microbiota response to an inulin-type fructan prebiotic: A randomised, double-blind, placebo-controlled, cross-over, human intervention study. *Br J Nutr* 2018;**119**:176–89. doi:10.1017/S0007114517003440
- 24 Cole JR, Wang Q, Fish JA, *et al.* Ribosomal Database Project: Data and tools for high throughput rRNA analysis. *Nucleic Acids Res* 2014;**42**. doi:10.1093/nar/gkt1244
- 25 Haange SB, Jehmlich N, Krügel U, *et al.* Gastric bypass surgery in a rat model alters the community structure and functional composition of the intestinal microbiota independently of weight loss. *Microbiome* 2020;**8**:13. doi:10.1186/s40168-020-0788-1
- 26 Pudel V, Westenhöfer J. *Fragebogen zum Eßverhalten (FEV)-Handanweisung.* Göttingen; Verlag für Psychologie Dr. CJ Hogrefe 1989.
- 27 Hilbert A, Tuschen-Caffier B, Karwautz A, *et al.* Eating disorder examination-questionnaire. *Diagnostica* 2007;**53**:144–54.
- 28 Han J, Lin K, Sequeira C, *et al.* An isotope-labeled chemical derivatization method for the quantitation of short-chain fatty acids in human feces by liquid chromatography-tandem mass spectrometry. *Anal Chim Acta* 2015;**854**:86–94. doi:10.1016/j.aca.2014.11.015
- 29 Vieira-Silva S, Falony G, Belda E, *et al.* Statin therapy is associated with lower prevalence of gut microbiota dysbiosis. *Nature* 2020;**581**:310–5. doi:10.1038/s41586-020-2269-x
- 30 Parker BJ, Wearsch PA, Veloo ACM, *et al.* The Genus *Alistipes*: Gut Bacteria With Emerging Implications to Inflammation, Cancer, and Mental Health. *Front. Immunol.* 2020;**11**:906. doi:10.3389/fimmu.2020.00906
- 31 Zhang X, Zhao Y, Zhang M, *et al.* Structural changes of gut microbiota during berberine-mediated prevention of obesity and insulin resistance in high-fat diet-fed rats. *PLoS One* 2012;**7**. doi:10.1371/journal.pone.0042529
- 32 Biddle A, Stewart L, Blanchard J, *et al.* Untangling the Genetic Basis of Fibrolytic Specialization by Lachnospiraceae and Ruminococcaceae in Diverse Gut Communities. *Diversity* 2013;**5**:627–40. doi:10.3390/d5030627
- 33 Ozato N, Saito S, Yamaguchi T, *et al.* Blautia genus associated with visceral fat accumulation in adults 20–76 years of age. *npj Biofilms Microbiomes* 2019;**5**:1–9. doi:10.1038/s41522-019-0101-x
- 34 Ryan KK, Tremaroli V, Clemmensen C, *et al.* FXR is a molecular target for the effects of vertical sleeve gastrectomy. *Nature* 2014;**509**:183–8. doi:10.1038/nature13135

- 35 Woting A, Pfeiffer N, Loh G, *et al.* Clostridium ramosum promotes High-Fat diet-induced obesity in Gnotobiotic Mouse Models. *MBio* 2014;**5**:1530–44. doi:10.1128/mBio.01530-14
- 36 Lopetuso LR, Scaldaferri F, Petito V, *et al.* Commensal Clostridia: Leading players in the maintenance of gut homeostasis. *Gut Pathog.* 2013;**5**:23. doi:10.1186/1757-4749-5-23
- 37 Yutin N, Galperin MY. A genomic update on clostridial phylogeny: Gram-negative spore formers and other misplaced clostridia. *Environ Microbiol* 2013;**15**:2631–41. doi:10.1111/1462-2920.12173
- 38 Medawar E, Huhn S, Villringer A, *et al.* The effects of plant-based diets on the body and the brain: a systematic review. *Transl Psychiatry* 2019;**9**:226. doi:10.1038/s41398-019-0552-0
- 39 Streppel MT, Arends LR, Van't Veer P, *et al.* Dietary fiber and blood pressure: A meta-analysis of randomized placebo-controlled trials. *Arch. Intern. Med.* 2005;**165**:150–6. doi:10.1001/archinte.165.2.150
- 40 Yutin N, Galperin MY. A genomic update on clostridial phylogeny: Gram-negative spore formers and other misplaced clostridia. *Environ Microbiol* 2013;**15**:2631–41. doi:10.1111/1462-2920.12173
- 41 Boente RF, Ferreira LQ, Falcão LS, *et al.* Detection of resistance genes and susceptibility patterns in Bacteroides and Parabacteroides strains. *Anaerobe* 2010;**16**:190–4. doi:10.1016/j.anaerobe.2010.02.003
- 42 Wang K, Liao M, Zhou N, *et al.* Parabacteroides distasonis Alleviates Obesity and Metabolic Dysfunctions via Production of Succinate and Secondary Bile Acids. *Cell Rep* 2019;**26**:222–235.e5. doi:10.1016/j.celrep.2018.12.028
- 43 Wolf AR, Wesener DA, Cheng J, *et al.* Bioremediation of a Common Product of Food Processing by a Human Gut Bacterium. *Cell Host Microbe* 2019;**26**:463–477.e8. doi:10.1016/j.chom.2019.09.001
- 44 Gomez-Arango LF, Barrett HL, Wilkinson SA, *et al.* Low dietary fiber intake increases Collinsella abundance in the gut microbiota of overweight and obese pregnant women. *Gut Microbes* 2018;**9**:189–201. doi:10.1080/19490976.2017.1406584
- 45 Frost F, Storck LJ, Kacprowski T, *et al.* A structured weight loss program increases gut microbiota phylogenetic diversity and reduces levels of Collinsella in obese type 2 diabetics: A pilot study. *PLoS One* 2019;**14**:e0219489. doi:10.1371/journal.pone.0219489
- 46 Takada T, Kurakawa T, Tsuji H, *et al.* Fusicatenibacter saccharivorans gen. nov., sp. nov., isolated from human faeces. *Int J Syst Evol Microbiol* 2013;**63**:3691–6. doi:10.1099/ijs.0.045823-0
- 47 Guo P, Zhang K, Ma X, *et al.* Clostridium species as probiotics: potentials and challenges. *J Anim Sci Biotechnol* 2020;**11**:24. doi:10.1186/s40104-019-0402-1
- 48 Venegas DP, De La Fuente MK, Landskron G, *et al.* Short chain fatty acids (SCFAs) mediated gut epithelial and immune regulation and its relevance for inflammatory bowel diseases. *Front. Immunol.* 2019;**10**:277. doi:10.3389/fimmu.2019.00277
- 49 Kaczmarek JL, Musaad SMA, Holscher HD. Time of day and eating behaviors are associated with the composition and function of the human gastrointestinal microbiota. *Am J Clin Nutr* 2017;**106**:1220–31. doi:10.3945/ajcn.117.156380
- 50 Calderón-Pérez L, Gosalbes MJ, Yuste S, *et al.* Gut metagenomic and short chain fatty acids signature in hypertension: a cross-sectional study. *Sci Rep* 2020;**10**:1–16. doi:10.1038/s41598-020-63475-w
- 51 Frost G, Sleeth ML, Sahuri-Arisoylu M, *et al.* The short-chain fatty acid acetate reduces appetite via a central homeostatic mechanism. *Nat Commun* 2014;**5**:1–11. doi:10.1038/ncomms4611