



PREPRINT: NOT PEER-REVIEWED

Chronic fatigue and post-exertional malaise in people living with long COVID

Rosie Twomey^{1,2}, Jessica DeMars³, Kelli Franklin⁴, S. Nicole Culos-Reed^{5,6,7}, Jason Weatherald⁸, James G. Wrightson⁹

¹Ohlson Research Initiative, Arnie Charbonneau Cancer Institute, Cumming School of Medicine, University of Calgary, Calgary, AB, Canada; ²O'Brien Institute of Public Health, Cumming School of Medicine, University of Calgary, Calgary, AB, Canada; ³Breath Well Physio, Calgary, AB, Canada; ⁴Patient partner; ⁵Faculty of Kinesiology, University of Calgary, Calgary, AB, Canada; ⁶Department of Oncology, Cumming School of Medicine, Calgary, AB, Canada; ⁷Department of Psychosocial Resources, Tom Baker Cancer Centre, Alberta Health Services, Calgary, AB, Canada; ⁸Department of Medicine, Division of Respiriology, University of Calgary, Calgary, Canada; ⁹Department of Clinical Neurosciences, University of Calgary and Alberta Children's Hospital, Calgary, AB, Canada.

Corresponding author:

Rosie Twomey, Ph.D.

Rosemary.Twomey@ucalgary.ca

@rosie_twomey

Please cite as: Twomey R, DeMars J, Franklin K, Culos-Reed SN, Weatherald J, Wrightson JG. Chronic fatigue and post-exertional malaise in people living with long COVID. *MedRxiv*. DOI: [XXXXXXXXXX](#)

Data and supplementary materials: <https://osf.io/dxu63/>

S1: STROBE checklist

S2: Recruitment slide

S3: Survey

S4: Data cleaning procedures

S5: Reduced (anonymized) dataset

Twomey et al. 2021

This preprint was last modified on June 8, 2021 (V1)

1 of 28

NOTE: This preprint reports new research that has not been certified by peer review and should not be used to guide clinical practice.

Abstract

Purpose: People living with long COVID describe a high symptom burden, and a more detailed assessment of chronic fatigue and post-exertional malaise (PEM) may inform the development of rehabilitation recommendations. The aims of this study were to use validated questionnaires to measure the severity of fatigue and compare this with normative data and thresholds for clinical relevance in other diseases; measure and describe the impact of PEM; and describe symptoms of dysfunctional breathing, self-reported physical activity/sitting time, and health-related quality of life.

Methods: This was an observational study involving an online survey for adults living with long COVID (data collection from February-April, 2021) following a confirmed or suspected SARS-CoV-2 infection. Questionnaires included the Functional Assessment of Chronic Illness Therapy-Fatigue Scale (FACIT-F) and DePaul Symptom Questionnaire-Post-Exertional Malaise.

Results: After data cleaning, $n=213$ participants were included in the analysis. Participants primarily identified as women (85.5%), aged 40-59 (78.4%), who had been experiencing long COVID symptoms for ≥ 6 months (72.3%). The total FACIT-F score was 18 ± 10 (where the score can range from 0-52, and a lower score indicates more severe fatigue), and 71.4% were experiencing chronic fatigue. Post-exertional symptom exacerbation affected most participants, and 58.7% met the scoring thresholds used in people living with myalgic encephalomyelitis/chronic fatigue syndrome. PEM occurred alongside a reduced capacity to work, be physically active, and function both physically and socially.

Conclusion: Long COVID is characterized by chronic fatigue that is clinically relevant and is at least as severe as fatigue in several other clinical conditions, including cancer. PEM appears to be a common and significant challenge for the majority of this patient group. Patients, researchers, and allied health professionals are seeking information on safe rehabilitation for people living with long COVID, particularly regarding exercise. Fatigue and post-exertional symptom exacerbation must be monitored and reported in studies involving interventions for people with long COVID.

Keywords: Post-acute COVID-19 syndrome; Patient-reported outcomes; Quality of life; Chronic fatigue; Post-viral fatigue; COVID-19; Survey; Physical activity; Post-exertional symptom exacerbation; Post-exertional neuroimmune exhaustion.

Introduction

Long COVID is a major public health concern. The scale of the COVID-19 pandemic means that even if a small proportion of people infected with SARS-CoV-2 have prolonged symptoms, this translates to millions of people worldwide [1]. Estimates suggest that 13.7% of people will continue to have symptoms 12 weeks after infection [2]. This is not only a phenomenon that affects hospitalized patients or those with comorbidities [3]. Even in individuals at low risk of COVID-19 mortality, chronic symptoms can be present and can co-occur with impairment in one or more organs [4]. Long COVID is a complex, heterogeneous condition that is defined based on an elapsed acute infectious period [5]. Although there is not complete consensus, long COVID has been defined as the presence of signs and symptoms that develop during or following an infection consistent with COVID-19 and continue for four weeks or longer [6,7]. Long COVID (alternatively called post-acute COVID-19 after 12 weeks) is characterized by persistent, debilitating and wide-ranging symptoms that vary between individuals but often include fatigue, shortness of breath, dry cough, cognitive impairment, palpitations, chest tightness, and dizziness [7,8]. Persistent (chronic) fatigue is consistently reported to be the most prevalent symptom of long COVID [3,8,9]. Chronic fatigue describes a distressing, persistent feeling of weariness, tiredness or exhaustion that is not alleviated by rest and is not proportional to recent activity levels. Chronic fatigue is a hallmark of multiple conditions, and is known to interfere with usual function and negatively impact quality of life [10,11].

Healthcare professionals who are living with long COVID describe its trajectory as unpredictable, episodic and having a relapse-remitting nature [12–14]. Reports of persistent fatigue alongside fluctuating symptoms that worsen unpredictably or in response to exertion have led to comparisons between long COVID and other post-viral conditions, including myalgic encephalomyelitis/chronic fatigue syndrome (ME/CFS) [5,6,15–17]. One of the hallmark symptoms of ME/CFS is post-exertional symptom exacerbation, also called post-exertional malaise (PEM) [18,19]. PEM is a worsening of symptoms and reduction in function after physical, cognitive, or emotional activity that would not have caused a problem before illness [18–20]. To date, the identification of PEM in people living with long COVID has been driven by one remarkable patient-led effort that asked participants to identify PEM based on a definition of PEM [8,9]. However, to date, preliminary studies exploring progressive exercise have not reported any measure of PEM at enrollment, nor reported monitoring tolerability or symptom exacerbation in response to exertion [21,22]. This may be because the presence of PEM in people living with long COVID has not been clearly identified using self-report tools that are validated in people with ME/CFS.

Several studies have focused on persistent symptoms, recovery or rehabilitation after hospital admission due to COVID-19 [3,23–26]. In contrast, few studies have included people who were not hospitalized (the majority of individuals affected by COVID-19) or did not have a laboratory diagnosis of COVID-19, but who have experienced an acute illness equivalent to the acute symptomatic presentation of COVID-19 and/or had a known exposure to the virus. There are several explanations for the lack of laboratory confirmation, including lack of access caused by limited polymerase chain reaction (PCR) testing capacity early in the pandemic; false-negative PCR tests (~50% of tests during a 0–5-day incubation period, and ~10% of cases after this point [27]); negative, i.e. inconclusive antibody or serology tests [28]; and the numerous disincentives to seeking or accessing testing that can disproportionately affect disadvantaged populations (such as stigma or potential loss of income) [29]. This issue has been consistently raised by patients who may be considered ineligible for long COVID health services and sickness benefits [30]. Therefore, it is important to include everyone with a confirmed or suspected SARS-CoV-2 infection when characterizing the symptom burden of long COVID.

The aim of this study was to perform a more detailed assessment of fatigue and PEM in people with long COVID to inform the development of physiotherapy/rehabilitation recommendations. In a sample of adults who identified as living with long COVID, the specific objectives of this study were to use validated questionnaires to (1) measure the severity of fatigue and compare this with normative data and thresholds for clinical relevance in other diseases; (2) assess PEM using screening methods recommended for use in people living with ME/CFS; and (3) describe symptoms of dysfunctional breathing, self-reported physical activity/sitting time, and health-related quality of life to compare with normative data, where available.

Methods

Study Design and Setting

This was an observational study involving an online survey hosted on Qualtrics, a web-based survey tool. The survey opened on February 11, 2021, and the final response was completed on April 25, 2021. The study was approved by the University of Calgary Conjoint Health Research Ethics Board (REB21-0159) and performed according to the Declaration of Helsinki, with the exception of preregistration. A STROBE checklist is available in Supplementary File 1 (S1). All supplementary files are available on the Open Science Framework (<https://osf.io/dxu63/>).

Participants

The survey explicitly targeted people living with long COVID. Participants were presented with four eligibility criteria as follows:

1. You are an adult (aged ≥ 18 years)
2. You consider yourself to be experiencing long COVID. Other terms include "long hauler" or "post-COVID-19 syndrome." Regardless of the name, you are eligible if you have long-term symptoms due to COVID-19, and your symptoms do not pre-date the confirmed or suspected infection with COVID-19.
3. You tested positive for COVID-19, or you strongly suspect that you were infected with COVID-19 but were either unable to access a COVID-19 test or tested negative (e.g., if you were tested early or late after exposure to the virus). Strong suspicion could be based on experiencing common COVID-19 symptoms during the acute phase of the virus (typically 2-14 days), having close contact with a confirmed case, and being linked with an outbreak.
4. It has been four weeks or longer since you received a positive COVID-19 test or since you first experienced symptoms of COVID-19.

The survey was delivered in English and required high-school-level reading comprehension, and to complete the survey, participants required access to a computer (desktop, laptop, or tablet) or smartphone. Therefore, non-English speakers and people without access to this technology were excluded from participating.

Recruitment and Informed Consent

Participants were recruited from long COVID networks on social media (Twitter and Facebook). RT and JDM shared a recruitment slide (S2) with community leaders, patient advocates and patient support groups (where

permission was granted) via these social networks. In addition, the authors shared the slide with their network of physiotherapy/rehabilitation professionals. A snowball recruitment strategy was used to allow patients and clinicians to identify other people living with long COVID. Study details such as the purpose, research team, the risks and benefits of participating, and contact details for more information were communicated on the first page of the survey using an implied consent approach. Participants were then presented with an agreement to participate, and consent was implied by a specific action (the decision to select "Yes, I consent").

The Online Survey

The web-based survey tool was set up to exclude identifiable information, including email addresses and Internet Protocol addresses. Participant names and contact details were not collected, and therefore responses could not be used to identify individuals. Participants were asked to select or describe their gender, select their age category, and self-report their country of residence. Participants were asked to select or describe diagnosed comorbidities that pre-dated COVID-19. Participants were asked to select the date of COVID-19 testing that resulted in a positive test (if applicable) and select or describe symptoms that accompanied the acute phase of the illness. Participants were also asked to select or describe their current ability to work (if applicable). The full survey is presented in S3. Participants were then presented with five questionnaires that were selected due to their psychometric properties, recommended use, and low participant burden to complete.

Fatigue

The Functional Assessment of Chronic Illness Therapy Fatigue Scale (FACIT-F) [31] is a 13-item self-report questionnaire that was developed for use in people with cancer and is widely recommended for the measurement of fatigue severity and its impact [32]. This study does not validate the use of the FACIT-F in people living with long COVID, and we do not claim that the FACIT-F items capture all aspects of fatigue in this population. However, the FACIT-F does have clinical utility for measuring fatigue outside of oncology, including in people living with HIV, lupus, rheumatoid arthritis, psoriatic arthritis, anemia, COPD, Parkinson's disease and post-stroke [33–39]. In people living with and beyond cancer, the FACIT-F has a cut-point (<34, where the range is 0-52 and a lower score indicates more severe fatigue) that was designed to operationalize diagnostic fatigue criteria [40,41]. Although we do not claim that this is valid to "diagnose" fatigue in people with long COVID, we report the proportion of people who score below 34 as a crude comparison of clinical relevance and severity.

Post-exertional malaise

Historically, there has been difficulty in defining and measuring PEM [18,19], but for the purposes of this study, PEM was used to denote concepts related to post-exertional symptom exacerbation [18]. PEM was measured using the DePaul Symptom Questionnaire-Post-Exertional Malaise (DSQ-PEM) [42,43]. The DSQ-PEM asks participants about symptoms over a 6-month timeframe. However, we stipulated in the questionnaire instructions that if symptoms had been present for less than six months, participants should consider symptoms since the acute phase of COVID-19 or a positive COVID-19 test. Step 1 involves scoring above a threshold for one or more of the first five items. A threshold score of 2-4 for frequency (half the time, most of the time, or all of the time) coupled with a score of 2-4 for severity (moderate, severe, or very severe) for the same item is indicative of PEM. This method has been recommended by the National Institute of Neurological Disorders and Stroke (NINDS; part of the National

Institute of Health) Common Data Elements (CDE) PEM working group [44]. Secondly, we added to the above method using items in the additional supplementary questions that cover quick recovery, exercise exacerbation, and PEM duration and were designed to operationalize the CDE recommendations further [45]. In addition to step 1, items 7 or 8 must have an answer of "Yes," and a response of ≥ 14 h is required for item 9. However, the use of the supplementary items in this way was intended for the discrimination of people with ME/CFS from other conditions [45], and this was not our aim. Here, we use it as a stricter method of identifying PEM, considering our use of the DSQ-PEM outside of the context of ME/CFS. The DSQ-PEM was not used to comment on whether any of the participants in the present study have ME/CFS because this would require a more comprehensive clinical evaluation involving differential diagnoses and identification of other core symptoms [46,47].

Breathing

The 25-item Self-Evaluation of Breathing Questionnaire (SEBQ) was used to measure breathing discomfort related to perceptions of air hunger and the work or effort of breathing [48,49]. No cut-point has been validated, but in line with a recent study, we used a strict threshold of >25 as an indicator of significant breathing discomfort [50].

Health-Related quality of life

Health-related quality of life was measured using a 36-item instrument for adults, the RAND 36-Item Short-Form Health Survey (SF-36) [51]. The SF-36 measures eight multi-item health concepts (physical functioning, role limitations due to physical health problems, role limitations due to personal or emotional problems, energy/fatigue, emotional wellbeing, social functioning, bodily pain, and general health perceptions). It also includes a single item that provides an indication of perceived change in health. Responses are recoded so that each item is scored from 0-100%, with higher scores defining a more favourable health state. This questionnaire is a generic health-related quality of life tool that is useful for comparing general and specific populations and the relative burden of a health condition [52].

Physical activity/inactivity

Self-reported physical activity and sitting time were measures using the 7-item International Physical Activity Questionnaire-Short Form (IPAQ-SF) [53]. Data were processed according to standardized protocols available at www.ipaq.ki.se. The IPAQ-SF measures the self-reported frequency and duration (min) of vigorous-intensity activity, moderate-intensity activity, and walking performed in bouts of ≥ 10 minutes in the past week. Total weekly minutes for these activities were calculated, converted to metabolic equivalents (MET) and expressed as MET-minutes per week [54,55]. A summary indicator was used to categorize physical activity as 'high' (either 3 days of vigorous-intensity activity plus an accumulation of ≥ 1500 MET-min/week, or ≥ 5 days of any combination of activity that resulted in ≥ 3000 MET-min/week), 'moderate' (either ≥ 3 days of vigorous-intensity activity of ≥ 20 min/day, ≥ 5 days of moderate-intensity activity or walking for ≥ 30 min/day, or ≥ 5 days of any combination of activity that resulted in ≥ 600 MET-min/week), or 'low' (no physical activity reported or activity below the criteria for 'moderate'). The IPAQ-SF also measures the duration (minutes per day) of time spent sitting on a usual weekday. This includes time spent sitting at a desk, visiting friends, or reading, or sitting or lying down while watching television across various contexts, including work, home, or leisure [53]. This data was reported as minutes per day.

Data Analysis

Our primary analysis is descriptive and comparative, and data are presented as mean \pm standard deviation, median (interquartile range), or frequency (percentage). In our companion paper (*under preparation*), we provide a qualitative analysis of the rich information on the participant experience provided in the optional free-text comments, analyzed via thematic analysis. In the present analysis, we checked all free-text comments for any indication that the participant was unsure how to answer a question, that the questionnaire options were not applicable, or that questionnaire answer(s) should be considered against additional information that could invalidate the response. In exploratory analyses, we checked for differences between groups dichotomized as (i) participants who did and did not receive a laboratory diagnosis of COVID-19; (ii) participants who did and did not have one or more medical condition that pre-dated COVID-19 (recoded as yes, no); and (iii) participants who did and did not report PEM, based on scoring step 2. Differences in categorical variables between groups were tested using Chi-squared tests. Differences in questionnaire scores between groups were tested using Mann-Whitney U tests, and these p -values were corrected for multiple comparisons using the Holm-Bonferroni correction. The relationships between the FACIT-F score and SF-36 subscales and SEBQ score were examined using Spearman's correlations, with an adjusted false discovery rate. The threshold to reject the null hypothesis of no difference between groups was set as $p < 0.05$. Analysis was performed using Jamovi [56] and R [57]. Some participant information is presented here in aggregate but was removed from the open dataset to further ensure participant anonymity. The open (quantitative) dataset and analysis are available at <https://osf.io/dxu63/>.

Results

A total of $n=280$ people implied their consent, and $n=211$ participants (75.4%) completed 100% of the survey. Two researchers (RT, JGW) independently inspected survey responses for evidence of poor data quality (careless responses) and previous history of ME/CFS or post-viral fatigue, and these records were excluded. Both researchers checked all records for non-differentiation in ratings, particularly where items are reversed (FACIT-F and SF-36) and conducted random checks on data consistency (equivalent responses for similar items both within and between questionnaires). For example, inconsistencies across questionnaires were checked for items related to fatigue/tiredness on the FACIT-F and SF-36, vigorous and moderate activity on the SF-36 and IPAQ-SF, activity limitations on the SF-36 and DSQ-PEM, and exercise on the DSQ-PEM and IPAQ-SF. Both researchers individually inspected all complete records where no optional comments were provided (8.2%) and all records that participants completed in <10 minutes (6.7%). Partially complete records were included in the analysis if at least 50% of the survey was complete (this was equivalent to the participant completing both the FACIT-F and the DSQ-PEM), at least one optional comment regarding the experience of long COVID was provided, and no careless responses could be identified ($n=8$). One partially complete and two complete records were excluded because the participant indicated that they were asymptomatic or experienced one symptom during the acute phase of a suspected infection, did not received a positive test and provided no free-text elaboration for the suspected infection. Data cleaning procedures are outlined in detail in S4. Following data cleaning, a total of $n=213$ participants were included in the analysis. Excluding records where the time taken to complete the survey was more than two hours ($n=6$, assumed to have left the survey open while taking a break) and partially complete records, participants completed the survey in 27.4 ± 17.4 minutes.

Participants

Participant characteristics are presented in Table 1. Participants primarily identified as women (85.5%), most were aged 40-49 (32.9%), 30-39 (23.5%) or 50-59 (22.1%), most were from the UK (39.5%), Canada (35.2%) or the USA (16.0%) and the sample overwhelmingly identified as white (93.0%). A large proportion of participants had no medical conditions that pre-dated long COVID (46.5%), as described in Table 1.

Table 1. Participant characteristics

	<i>n</i>	%
Age Category		
18-29	21	9.9
30-39	50	23.5
40-49	70	32.9
50-59	47	22.1
60-69	21	9.9
70-79	4	1.9
Gender*		
Woman	182	85.4
Man	27	12.7
Non-binary	3	1.4
Prefer not to answer	1	0.5
Population Group(s)*		
White	198	93.0
Black or African American	3	1.4
Hispanic, Latino, Latina or Latinx	3	1.4
Asian or Asian American	1	0.5
British Indian	1	0.5
East Indian	1	0.5
Indigenous	1	0.5
Malagasy	1	0.5
Ashkenazi Jewish & White	1	0.5
Hispanic, Latino, Latina or Latinx & White	1	0.5
Middle Eastern or Northern African & White	1	0.5
Native & White	1	0.5
Country of Residence*		
United Kingdom	84	39.5
Canada	75	35.2
USA	34	16.0

Other Europe	10	4.7
Australia	1	0.5
Brazil	1	0.5
Nigeria	1	0.5
Qatar	1	0.5
Not reported	7	3.3
Existing Medical Conditions*		
None	99	46.5
Depression or Anxiety	16	7.5
Autoimmune Disorder	10	4.7
Hypothyroidism	8	3.7
Fibromyalgia	7	3.3
Migraines	7	3.3
Anaemia	6	2.8
Asthma (moderate to severe)	6	2.8
Hypertension	6	2.8
Inflammatory bowel disease	4	1.9
Endometriosis	3	1.4

Numbers may not sum to 100.0% due to rounding. *Selected or self-identified using free text.

The acute phase of COVID-19

We listed 11 common COVID-19 symptoms (fever; dry cough; tiredness; shortness of breath; aches and pains; sore throat; diarrhea; conjunctivitis; headache; loss of taste and smell; a rash on skin or discoloration of fingers and toes) and participants could additionally self-identify those that were not listed. The most common free-text symptoms were chest tightness or pain, brain fog or other cognitive impairment, and dizziness or lightheadedness (Table 2). Participants self-identified many other symptoms, and we report those that were present in more than 5% of the sample in Table 2; of these, participants identified a median of 7 (6-9) symptoms. Over half of participants were not tested/did not receive a positive test for COVID-19 ($n=127$, 59.6%). This is congruent with the proportion of patients with symptom onset early in the pandemic (April 2020 or earlier; 49.3% of the current sample) when people were less like to get tested. However, of those $n=86$ participants whose COVID-19 was confirmed through laboratory testing, some did have access to a test/tested positive early in the pandemic (April 2020 or earlier; 26.7%) but most tested positive from Sept-Dec 2020 (59.3%), when daily cases in Europe and North America increased. Few of the participants in this study had been hospitalized ($n=7$, 8.1%).

Table 2. The acute and chronic experience after confirmed or suspected infection with COVID-19

	<i>n</i>	%
Acute Symptoms*		
Shortness of Breath	202	94.8
Aches & pains	171	80.3
Headache	170	79.8
Tiredness / Fatigue	164	77.0
Dry cough	135	63.4
A rash on skin or discolouration of fingers and toe	129	60.6
Sore throat	128	60.1
Fever	118	55.4
Diarrhea	82	38.5
Loss of taste and smell	37	17.4
Chest tightness or pain	31	14.6
Conjunctivitis	27	12.7
Brain fog / confusion / cognitive impairment	27	12.7
Dizziness / light headedness	23	10.8
Rapid heart rate/ / tachycardia	17	8.0
Heart palpitations	16	7.5
Loss of appetite / weight loss	13	6.1
Nausea / vomiting	12	5.6
Sinus congestion / pressure	11	5.2
Months experiencing long COVID symptoms		
1-2 months	20	9.4
3-5 months	39	18.3
6-9 months	30	14.1
10+ months	124	58.2
Is long COVID preventing or limiting your ability to work?*		
Yes - preventing my return to work / unable to work	90	42.3
Yes - able to work but usual capacity is limited / reduced hours	89	41.8
No or N/A - retired, not employed, or a stay-at-home parent	22	10.3
No - able to work as usual	11	5.2
Not reported	1	0.5
Positive Test		
Yes	86	40.4
No	127	59.6

Numbers may not sum to 100.0% due to rounding. *Selected or self-identified using free text.

Long COVID

The majority of the participants had been experiencing long COVID symptoms for more than six months (72.3%; Table 2). One-third ($n=71$) of participants indicated that they were not receiving support from their medical/healthcare team for long COVID symptoms. A large subset of participants indicated that long COVID was preventing their return to work or that they were unable to work (42.3%). A second large subset indicated that long COVID had reduced their capacity to work or reduced the hours they were able to work (41.8%). Only 5.2% of the participants were able to work as usual. The question on employment was not applicable for 10.3% of participants, though several elaborated on reduced capacity in other contexts (e.g., home and family roles).

Fatigue (FACIT-F)

The total FACIT-F score was 18 ± 10 (where the score can range from 0-52, and a lower score indicates more severe fatigue). As a reference, means and SDs for other clinical conditions are presented in Table 3.

Table 3. FACIT-F scores in a range of other populations for comparison with long COVID.

Disease or Clinical condition	FACIT-F*	<i>n</i>	Age*	%Female*	Study
Long COVID	18 ± 10	213	Table 1	85	-
General population	44 ± 9	1010	46 ± 17	52	[58]
Cancer & anemia	24 ± 13	2292	63 ± 13	65	[58]
Chronic cancer-related fatigue	27 ± 7	51	54 ± 11	65	[59]
Human immunodeficiency virus	34 ± 13	51	40 ± 7	12	[33]
Rheumatoid arthritis	29 ± 11	631	56 [‡]	79	[36]
Psoriatic arthritis	36 ± 12	135	52 ± 13	42	[34]
Iron deficiency anemia	24 ± 12	608	45 ± 14	89	[38]
Chronic obstructive pulmonary disease	42 ± 9	564	68 ± 10	68	[60]
Parkinson's disease	34 ± 10	118	64 ± 10	46	[39]
Chronic immune thrombocytopenia	36 ± 12	207	50 [‡]	67	[61]
Stroke	38 ± 10	51	63 ± 14	51	[33]

*Values have been rounded for presentation. [‡]=median

More than 90% of the sample were below the cut-off for clinically relevant fatigue in people living with and beyond cancer (Table 4), and 71.4% were experiencing chronic fatigue, based on this cut-point and symptoms persisting for ≥ 3 months.

Post-exertional malaise (DSQ-PEM)

In step 1, participants rated the frequency and severity of items 1-5, abbreviated in Table 4. The threshold for each item was a frequency ranging from half the time to all the time, combined with a severity of moderate to very severe. The proportion of participants meeting this threshold for these items ranged from 68.1% (*Dead, heavy feeling after starting to exercise*) to 85.4% (*Minimum exercise makes you physically tired*). Overall, 94.8% met the threshold for at least one of the first five items. However, only 4.7% met the threshold for *only* one of the first five items. Rather,

nearly half (46.9%) of participants met the threshold for *all* of the first five items. In step 2, which incorporates the supplementary items, 58.7% of participants in this sample met the scoring thresholds used in people with ME/CFS.

Breathing (SEBQ)

The total SEBQ score was 30 ± 17 (where the score can range from 0-75, and a higher score indicates more severe symptoms). In a sample of 180 participants from the general population, the mean \pm SD was reported as 15.5 ± 11.5 [48]. Furthermore, 54.0% of the sample had a score >25 , indicating significant breathing discomfort.

Health-related quality of life (SF-36)

Summary data for SF-36 subscales can be found in Table 4. The health concepts that were most impacted by long COVID were role limitations due to physical health problems ($3 \pm 10\%$, where all scores range from 0-100% and a higher percentage indicates better health) and energy/fatigue ($18 \pm 16\%$). The health change item asks participants, "Compared to one year ago, how would you rate your health in general now?" Here, the score was also strikingly low ($6 \pm 14\%$), with 79.5% answering "Much worse now than one year ago" and 18.6% answering "Somewhat worse now than one year ago." Nine participants (4.3%) left free-text comments to express uncertainty about whether to answer questions 33-36 (which all contribute to the general health subscale) based on their current health or health prior to COVID-19. Removing these participant's responses due to this uncertainty did not change the descriptive statistics for the general health subscale, so they remain in our analysis. As visualized in Figure 1, HRQL was severely impaired in people living in long COVID, in comparison to normative data from the general population [62], people living with rheumatoid arthritis (RA) [63], and chronic obstructive pulmonary disease (COPD) [64]

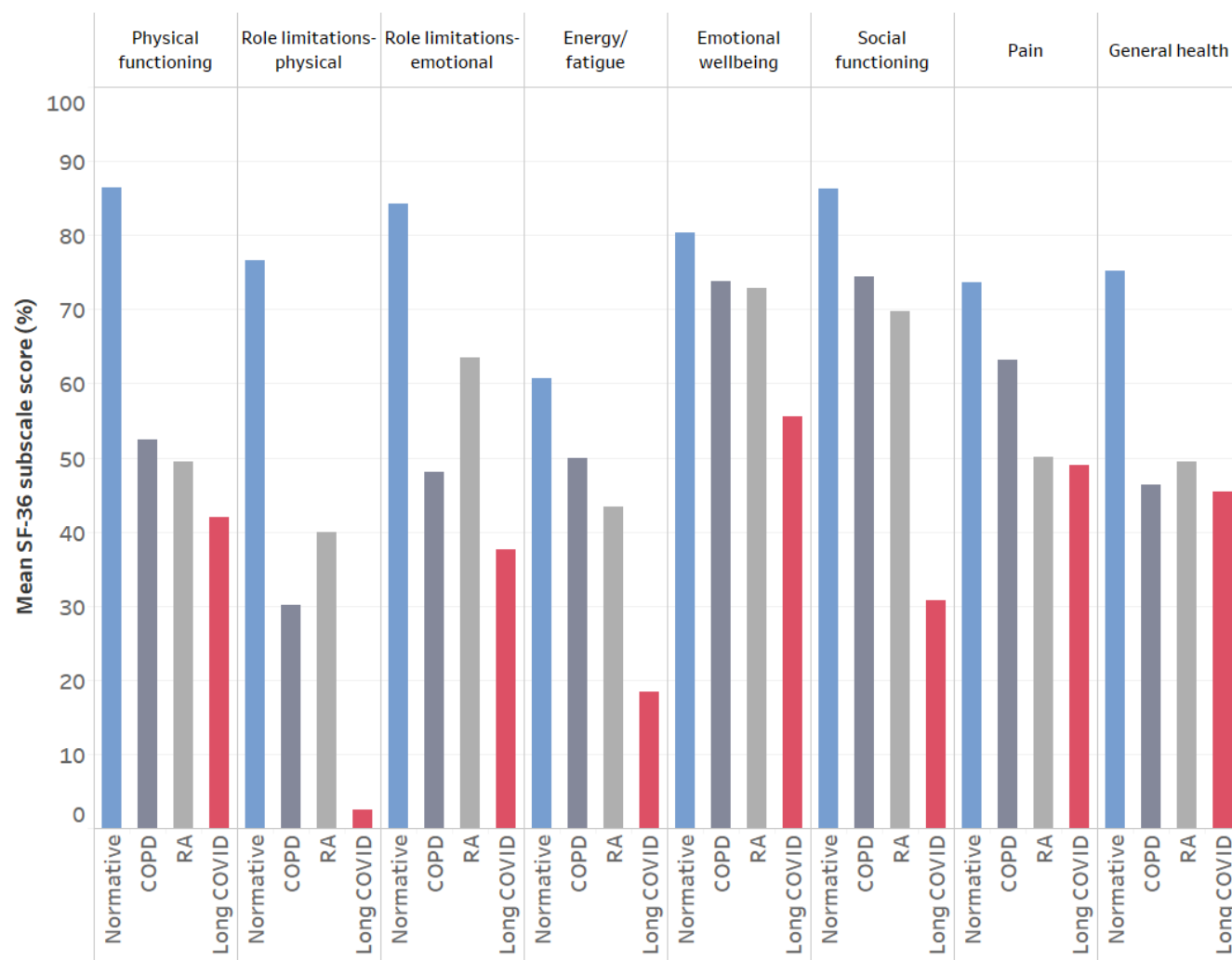


Figure 1. A visualization of the impact of long COVID on health-related quality of life measured using eight SF-36 subscales. Mean scores from the present study are presented alongside data from the general population (normative) [62], rheumatoid arthritis (RA) [63], and chronic obstructive pulmonary disease (COPD) [64].

Physical activity/inactivity (IPAQ-SF)

Most participants reported no vigorous physical activity (77.6%, Table 4). In the remaining subset of participants ($n=46$) who did report vigorous physical activity, this took place on 2 (1-3) days per week, for 60 (30-65) minutes (median and IQR). However, most of these participants indicated that rather than those vigorous activities suggested by the IPAQ-SF (e.g., heavy lifting, digging, aerobics, or fast bicycling), they answered for typical daily activities, which were now rated as vigorous. This should be considered against the description of vigorous activities in the IPAQ-SF as "activities that take hard physical effort and make you breathe much harder than normal." Over half of the participants reported no moderate physical activity (58.5%; note that the IPAQ-SF excludes walking from this category). In the remaining subset of participants ($n=83$) who did report moderate physical activity, this took place

on 2 (1-4) days per week, for 50 (20-90) min, and participants made similar comments about the perceived effort of daily activities. Most participants reported some walking of at least 10 min duration (80.4%), and this took place on 4 (2-7) days per week, for 30 (20-60) min. Total physical activity over the past week was equivalent to 503 (99-1361) MET-minutes. Physical activity levels were categorized as none/low in 59.8%, moderate in 31.4%, and high in 8.8% of the sample (Table 4). Because the vigorous and moderate activity descriptors may not be valid in this population, later exploratory analysis uses only the walking variable as a measure of physical activity (because it is not based on perceived physical effort or breathing harder).

There were $n=8$ missing responses for time spent sitting for unknown reasons, though presumably because some participants found the wording unclear for this item. During data inspection, we noticed that some participants answered in total hours for five weekdays or for the full week rather than estimated a single weekday (and one participant left a comment to this effect). We also noticed that some participants included sleep in their estimate of sitting time (and one participant left a comment to this effect). Rather than devise a rule for correcting this data, we removed all responses >24 hours ($n=18$) and all responses between 19-24 hours (to remove data where sleep was included in the estimate; $n=11$). Therefore, the estimate of sitting time was in $n=169$ participants, who reported 525 (383-620) min [or 8.8 (6.4-10.3) hours] of time spent sitting per day on weekdays. However, this may be a poor surrogate for daily inactivity because $n=10$ of these participants left a comment to elaborate on spending time both sitting and lying down (or on the orthostatic challenges of sitting versus lying down. Because the IPAQ-PA specifically asks about time spent sitting as opposed to time spent awake but inactive, a median of 510 min may be an underestimate of sedentary time.

Table 4. Patient-reported outcome measures

Outcome Variable	Result
Fatigue (FACIT-F; $n=213$)	
Total score, mean \pm SD	18 \pm 10
Total score, median (IQR)	17 (11 - 24)
Score ≤ 34 , n (%)	194 (91.1)
PEM (DSQ-PEM; $n=213$)	
<i>Above threshold for frequency and severity (the below statements are abbreviated)</i>	
1. Dead, Heavy feeling after starting to exercise, n (%)	145 (68.1)
2. Next day soreness or fatigue after non-strenuous, everyday activities, n (%)	163 (76.5)
3. Mentally tired after the slightest effort, n (%)	153 (71.8)
4. Minimum exercise makes you physically tired, n (%)	182 (85.4)
5. Physically drained or sick after mild activity, n (%)	173 (81.2)
6. [No] recovery within an hour or two after exhausting activity, n (%)	191 (89.7)
7. Worsening of fatigue/energy-related illness after minimal physical effort, n (%)	188 (88.3)
8. Worsening of fatigue/energy-related illness after minimal mental effort, n (%)	178 (83.6)
9. Feel worse after activities, & this lasts ≥ 14 hours, n (%)	148 (69.5)
10. Do not exercise because it makes symptoms worse, n (%)	191 (89.7)*
DSQ-PEM scoring step one (Yes), n (%)	202 (94.8)
DSQ-PEM scoring step two (Yes), n (%)	125 (58.7)

Breathing (SEBQ; <i>n</i>=210)	
Total score, mean ± SD	30 ± 17
Total score, median (IQR)	29 (16 - 43)
Score ≥ 25, <i>n</i> (%)	116 (54.0)
HRQL (SF-36; <i>n</i>=210)	
Physical functioning, mean ± SD	40 ± 24%
Role limitations-physical health, mean ± SD	3 ± 10%
Role limitations-emotional problems, mean ± SD	38 ± 42%
Energy/fatigue, mean ± SD	18 ± 16%
Emotional wellbeing, mean ± SD	56 ± 21%
Social functioning, mean ± SD	31 ± 24%
Pain, mean ± SD	49 ± 26%
General health, mean ± SD	45 ± 21%
Health change, mean ± SD	6 ± 14%
Physical activity/inactivity (IPAQ-SF, <i>n</i>=205)	
No vigorous activity, <i>n</i> (%)	159 (77.6)
No moderate activity, <i>n</i> (%)	120 (58.5)
No walking, <i>n</i> (%)	40 (19.6)
Category = none/low activity	122 (59.8) [‡]
Category = moderate activity	64 (31.4) [‡]
Category = high activity	18 (8.8) [‡]
Sitting (min/day)	525 (383-620) [§]

Numbers may not sum to 100.0% due to rounding. *For this item, *n*=208 due to missing responses. [‡]For these items, *n*=204 due to missing responses. [§]For this variable, *n*=168, see main text.

Exploratory Statistical Analysis

Laboratory diagnosis

The only sample characteristic that was different between groups dichotomized based on laboratory diagnosis of COVID-19 was age ($\chi^2=14.1$; $p=0.015$), where participants aged 40-69 seemed to be less likely to have a laboratory confirmation (see S5 for contingency tables) in comparison to other age categories (Table 1). Participants who had a laboratory diagnosis did not have a higher occurrence of PEM ($\chi^2=0.97$; $p=0.325$), a higher fatigue severity ($U=5138$; $p_{Holm}=1.000$; $r=0.06$) or more breathing discomfort ($U=4938$; $p_{Holm}=1.000$; $r=0.06$). The only SF-36 subscale that differed between groups was general health ($U=4044$; $p_{Holm}=0.033$; $r=0.24$), where people with laboratory confirmation rated their general health ~10% better than those without. This was not due to differences in the proportion of people receiving support from their medical/healthcare team for long COVID symptoms ($\chi^2=0.24$; $p=0.621$).

Exploratory Relationships

More severe fatigue (FACIT-F score) was significantly associated with worse HRQL (all SF-36 subscales, S5), and more breathing discomfort (SEBQ; $\rho=-0.24$ $p_{fdr}=0.002$). The strongest correlations with the SF-36 subscale were with physical functioning ($\rho=0.65$; $p_{fdr}=0.002$; Figure 2), social functioning ($\rho=0.56$; $p_{fdr}=0.002$; Figure 2), pain ($\rho=0.40$; $p_{fdr}=0.002$; Figure 2) and health change ($\rho=0.33$; $p_{fdr}=0.002$).

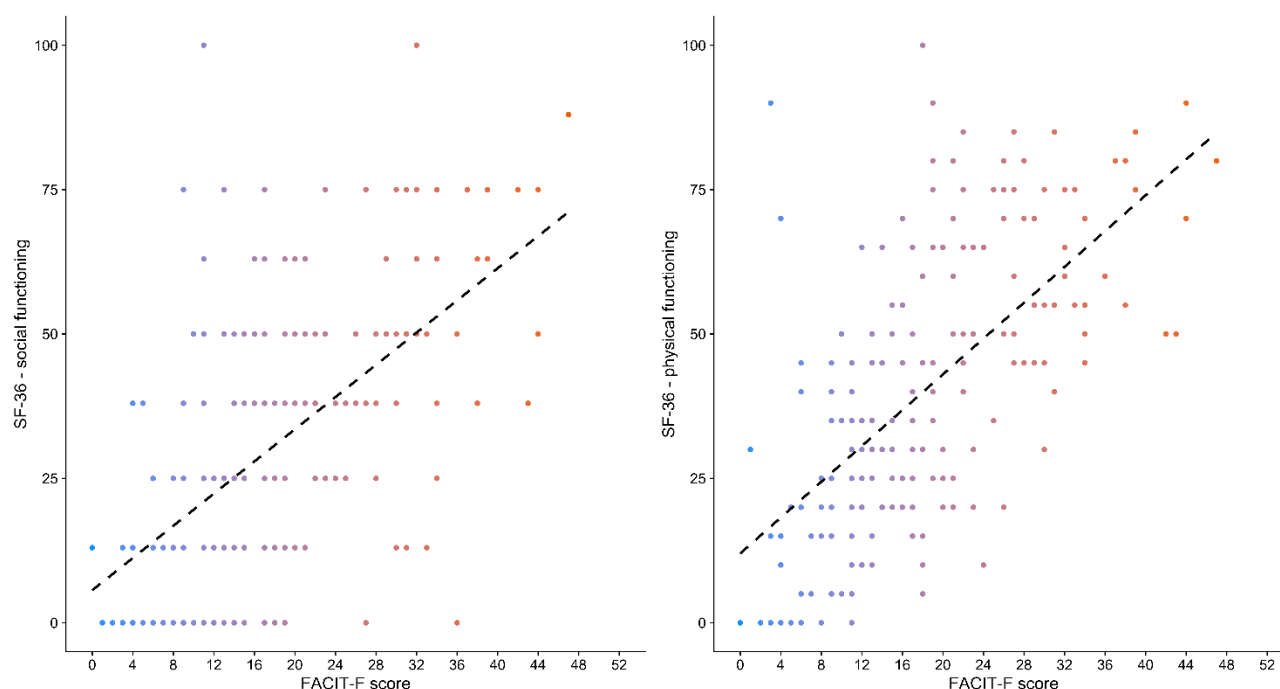


Figure 2. The relationship between fatigue (FACIT-F score, where a lower score represents more severe fatigue), social functioning (left panel; $\rho=0.56$; $p_{fdr}=0.002$) and physical functioning (right panel; $\rho=0.40$; $p_{fdr}=0.002$). Dashed lines are a graphical representation of Spearman's correlation.

Medical/health conditions that pre-dated COVID-19

The only sample characteristic that was different between groups dichotomized based on medical/health conditions that pre-dated COVID-19 was support for long COVID symptoms ($\chi^2=5.44$; $p=0.020$); more participants with comorbidity reported receiving support from their medical/healthcare team. Participants with a comorbidity did not report more severe fatigue ($U=4487$; $p_{Holm}=0.080$; $r=0.20$), but did report more breathing discomfort ($U=3997$; $p_{Holm}=0.011$; $r=0.26$). Presence of any comorbidity was reflected in ~10% lower physical functioning ($U=3624$; $p_{Holm}=0.011$; $r=0.34$) and general health ($U=3712$; $p_{Holm}=0.011$; $r=0.32$) subscales only (S5). Participants with comorbidity had a higher occurrence of PEM compared to those with none (64.9 vs. 51.5%; $\chi^2=3.92$; $p=0.048$).

Post-exertional malaise

Groups dichotomized based on the presence of PEM differed based on work status/limitations ($\chi^2=13.0$; $p=0.023$) and physical activity category ($\chi^2=15.1$; $p<0.001$). A large proportion (71.1%) of participants who reported that long COVID was limiting their usual capacity to work were experiencing PEM. Similarly, a large proportion (68.9%) of participants who reported no/low physical activity were experiencing PEM. Participants with PEM reported more severe fatigue ($U=3888$; $p_{Holm}=0.011$; $r=0.29$; Figure 3), reduced physical functioning ($U=3809$; $p_{Holm}=0.011$; $r=0.29$), reduced social functioning ($U=3731$; $p_{Holm}=0.011$; $r=0.30$), and worse health compared to one year ago ($U=4479$; $p_{Holm}=0.028$; $r=0.16$). There were no other differences in questionnaires (S5). In total, 95.2% of

people with PEM scored <34 on the FACIT-F, compared to 85.2% of those without PEM (above the step 2 scoring threshold). Because comorbidities increase the prevalence of PEM by ~13%, we repeated all of the above analyses for participants reporting no comorbidities ($n=99$) as a robustness check, and none of the above findings were altered.

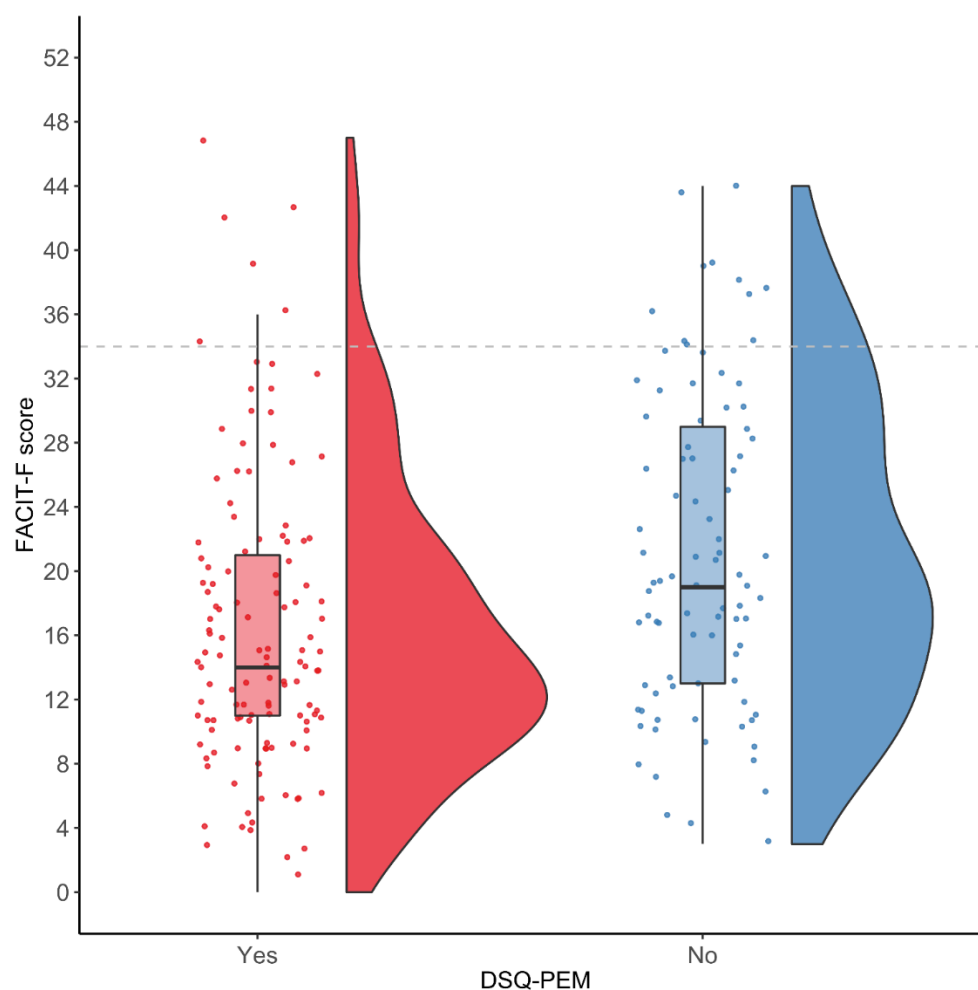


Figure 3. Raincloud plot [65] showing fatigue (FACIT-F score, where a lower score represents more severe fatigue) in people with post-exertional malaise, identified using step 2 scoring criteria for the DSQ-PEM questionnaire. Participants with PEM reported more severe fatigue ($p_{Holm}=0.011$). As a crude marker of severity, the dashed line shows the threshold score of clinical relevance in oncology; recommended for the diagnosis of cancer-related fatigue.

Discussion

In adults who identified as living with long COVID, our main findings were that (i) the overwhelming majority were living with chronic fatigue that was clinically relevant and appeared at least as severe as fatigue in several other clinical conditions, (ii) the impact on HRQL was substantial, despite a relatively young sample where almost half have no comorbidities, and (iii) the overwhelming majority were living with some level of post-exertional symptom exacerbation (or PEM), and many meet the threshold criteria for PEM using a self-report tool validated in people with ME/CFS. In this sample, people experiencing worsening of symptoms with exertion reported a reduced capacity to work and reduced physical and social functioning. Many participants were also living with breathing discomfort (air hunger and increased sensations of breathing effort), were unable to be physically active, had role limitations due to physical health problems, and rated their health as much worse compared to one year ago. Overall, symptom burden was not higher in people who received laboratory confirmation of COVID-19 compared to those with only an acute illness that was reasonably attributable to infection (in line with other data [66]), and comorbidities alone do not explain long COVID symptoms.

Chronic fatigue is difficult for patients to articulate and easy for others to dismiss [67,68]. Our data offer insight into the severity of the most common symptom, based on comparison with several other clinical conditions where the FACIT-F has been validated (Table 3), and comparison with a clinical cut-point recommended for the diagnosis of fatigue in people with cancer [40]. Fatigue is not only extremely common in long COVID, but for many, its severity and persistence are life-altering. Our exploratory analyses are in line with data from other populations on the associations between fatigue, reduced function, increased disability, and reduced HRQL [11,69]. The measurement of fatigue should be considered, and validation of a fatigue scale (such as the FACIT-F, which has demonstrated clinical utility in several populations) in people with long COVID is a priority. In addition, the use of visual analogue scales to measure response to intervention can be difficult to interpret if the measure (e.g., momentary or state perceptions of fatigue, or worst or average fatigue over a specific recall period) is not reported [22]. In fact, measurement of momentary fatigue using simple rating scales, such as the Rating of Fatigue scale [70] (pending validation in long COVID), might be best suited to the frequent monitoring of symptom exacerbation that is required of future reports of experimental interventions.

It is not currently understood how to treat chronic fatigue in people living with long COVID. Evidence from other conditions may offer some insight while data is being collected in long COVID. For example, at least some people with chronic fatigue after cancer treatment can benefit from exercise [71–73]. The mechanisms for the improvement in chronic cancer-related fatigue remain under investigation, but considering that the biological effects of exercise are multiple and interacting, reversal of deconditioning is unlikely to be the only pathway [74]. In contrast, exercise therapy is not a route to recovery for everyone with chronic cancer-related fatigue [71,75], and in people with ME/CFS, exercise (and other types of exertion) can cause serious setbacks and deterioration in function [76]. PEM is not caused by general deconditioning: PEM rarely occurs outside of the context of ME/CFS [75] and is associated with impairments measured during a two-day cardiopulmonary exercise test protocol that are not present in sedentary controls [77]. We found that a large proportion of people living with long COVID are experiencing PEM, and this corroborates many testimonials from patients/healthcare professionals with long COVID describing "relapses" after return to work and exercise [6,78]. Based on these findings, symptom exacerbation must be considered in rehabilitation and exercise interventions for people living with long COVID. In people with PEM, an activity plan needs to be carefully designed based on individual presentation with input from each patient [76]. The

DSQ-PEM might be useful as a screening measure and to facilitate a discussion with patients about post-exertional symptom exacerbation. PEM will not be an issue for everyone with chronic fatigue, and the presence of PEM is not sufficient for an ME/CFS diagnosis. However, the presence of chronic fatigue and PEM that persists after COVID-19, alongside a substantial reduction in the ability to engage in pre-illness activities, unrefreshing sleep, cognitive impairment or orthostatic intolerance, should lead to a comprehensive assessment to exclude or diagnose ME/CFS [46,47], because this will help patients access appropriate care.

Considering PEM, beneficial interventions might first ensure symptom stabilization, with a long-term goal of improved function (for example, return to roles, daily activities or work [79]) and HRQL. In ME/CFS, pacing is a self-management strategy for activity that helps minimize severe symptom exacerbation [80]. Improvements may be aided by careful tailoring, pacing, prioritization, and modest goal setting [81]. More than half of our sample reported breathlessness and other respiratory symptoms. In the absence or in excess of the magnitude of physiological respiratory or cardiac disease, long COVID may involve chronic changes in breathing patterns that result in this breathing discomfort [82]. Respiratory physiotherapy and breathing retraining may be helpful for people with breathing discomfort, considering improvements in symptoms in people living with postural orthostatic tachycardia syndrome and asthma [82–85]. Currently, there is limited information about whether exercise is beneficial for people living with long COVID, especially considering the heterogeneous range of symptoms. While seeking insight from studies in other clinical conditions is valuable, the methodological/reporting inadequacies of rehabilitation literature [73,86] should not be repeated in studies of long COVID. While exercise is likely to be beneficial for some, there are many unknowns, including whether all patients with persistent symptoms should undergo screening for respiratory and cardiac complications before beginning exercise; whether exercise rehabilitation needs to be medically supervised; what level of tailoring is required; what frequency, intensity, duration and type of exercise can be recommended; and the trajectory of recovery for people living with long COVID. These uncertainties, and the fact that little data exists to date, mean treatment may require a multidisciplinary care pathway [87,88]. Limited reporting of interventions with overinterpretations regarding safety [21] do not serve the long COVID research, allied health professional, nor patient community. It is essential that future clinical trials (including pilot/feasibility studies) report modifications, symptom exacerbation and other adverse events. More generally, transparent reporting using published guidelines and open-access repositories [89–92] will ensure progress in optimizing care for people with long COVID. Furthermore, research may be more impactful and meaningful when it is deeply collaborative and involves patients as partners [93].

Limitations

One of the main limitations of survey designs such as ours is selection bias. People living with long COVID who were experiencing fatigue, PEM or breathlessness may have been more inclined to participate than people living with long COVID who were not experiencing any of these specific symptoms. Many participants accessed the survey via social media and online support groups, and the extent to which our sample is representative of the wider population of people living with long COVID is unknown. Our data suggest that a large proportion of people living with long COVID experience chronic fatigue, PEM, persistent breathing discomfort, and reduced HRQL. Although we were primarily interested in these concepts, we acknowledge the constellation of signs and symptoms that make up the long COVID experience that were not assessed here, including symptoms related to cognitive impairment and orthostatic intolerance. Furthermore, our sample was composed of primarily white participants from North America or Europe, and our data may not be generalizable to other racial/ethnic groups or other world regions.

Conclusion

In this sample, long COVID is characterized by reduced HRQL and chronic fatigue that is clinically relevant and is at least as severe as fatigue in several other clinical conditions, including cancer. PEM seems to be a common and significant challenge for the majority of this patient group and occurs alongside a reduced capacity to work, be physically active, and function both physically and socially. Patients, researchers and allied health professionals are seeking information on safe rehabilitation and the potential role of exercise for people living with long COVID. Because people with long COVID report setbacks and deterioration in function following overexertion, fatigue and post-exertional symptom exacerbation must be monitored and reported in studies involving interventions for people with long COVID.

CRediT author statement

Rosie Twomey: Conceptualization, Methodology, Software, Formal analysis, Data curation, Writing - original draft, Project administration.

Jessica DeMars: Conceptualization, Methodology, Writing - review and editing.

Kelli Franklin: Patient partner (provided guidance based on the lived experience of long COVID), Writing - review and editing.

Jason Weatherald: Writing - review and editing.

S. Nicole Culos-Reed: Writing - review and editing.

James G. Wrightson: Conceptualization, Formal analysis, Visualization, Writing - review and editing.

Availability of data and material (data transparency)

An anonymized dataset is available at: <https://osf.io/dxu63/>

Funding

This study was not funded. However, RT is supported by the O'Brien Institute of Public Health and Ohlson Research Initiative, Cumming School of Medicine, University of Calgary. JGW is supported by the Hotchkiss Brain Institute and the Cumming School of Medicine, University of Calgary. NCR is funded by the Canadian Cancer Society, Canadian Institutes of Health Research, Alberta Cancer Foundation, and University of Calgary funding support. JW is supported by the Libin Cardiovascular Institute at the University of Calgary, Heart & Stroke Foundation of Canada, and Canadian Institutes of Health Research.

Conflicts of interest/Competing interests

JDM is a physiotherapist and owner of Breath Well Physio (Alberta, Canada) and has been treating people living with long COVID in private practice since July 2020. JDM and RT have piloted a free virtual program (Breath, Speak, Pace) for people living with long COVID in Alberta, Canada, funded by the Canadian Lung Association. This program will be continuing in partnership with Synaptic Health (Registered Charity No. 830838280RR001). JDM delivered a paid course for rehabilitation professionals working with people with long COVID in April 2021. The authors have no other conflicts of interest to disclose.

Acknowledgements

The authors wish to sincerely thank the people living with long COVID who took part in this study for sharing their experiences.

References

1. COVID-19 Map. In: Johns Hopkins Coronavirus Resource Center [Internet]. [cited 19 May 2021]. Available: <https://coronavirus.jhu.edu/map.html>
2. Prevalence of ongoing symptoms following coronavirus (COVID-19) infection in the UK - Office for National Statistics. [cited 23 May 2021]. Available: <https://www.ons.gov.uk/peoplepopulationandcommunity/healthandsocialcare/conditionsanddiseases/bulletins/prevalenceofongoingsymptomsfollowingcoronaviruscovid19infectionintheuk/1april2021>
3. Tabacof L, Tosto-Mancuso J, Wood J, Cortes M, Kontorovich A, McCarthy D, et al. Post-acute COVID-19 syndrome negatively impacts health and wellbeing despite less severe acute infection. medRxiv. 2020; 2020.11.04.20226126. doi:10.1101/2020.11.04.20226126
4. Dennis A, Wamil M, Alberts J, Oben J, Cuthbertson DJ, Wootton D, et al. Multiorgan impairment in low-risk individuals with post-COVID-19 syndrome: a prospective, community-based study. BMJ Open. 2021;11: e048391. doi:10.1136/bmjopen-2020-048391
5. Rando HM, Bennett TD, Byrd JB, Bramante C, Callahan TJ, Chute CG, et al. Challenges in defining Long COVID: Striking differences across literature, Electronic Health Records, and patient-reported information. medRxiv. 2021; 2021.03.20.21253896. doi:10.1101/2021.03.20.21253896
6. Décary S, Gaboury I, Poirier S, Garcia C, Simpson S, Bull M, et al. Humility and acceptance: working within our limits with long covid and myalgic encephalomyelitis/chronic fatigue syndrome. J Orthop Sports Phys Ther. 2021;51: 197–200. doi:10.2519/jospt.2021.0106
7. NICE. COVID-19 rapid guideline: managing the long-term effects of COVID-19. NICE; 18 Dec 2020 [cited 19 May 2021]. Available: <https://www.nice.org.uk/guidance/ng188/chapter/common-symptoms-of-ongoing-symptomatic-covid-19-and-post-covid-19-syndrome#common-symptoms-of-ongoing-symptomatic-covid-19-and-post-covid-19-syndrome>
8. Davis HE, Assaf GS, McCorkell L, Wei H, Low RJ, Re'em Y, et al. Characterizing long COVID in an International cohort: 7 months of symptoms and their impact. medRxiv. 2020; 2020.12.24.20248802. doi:10.1101/2020.12.24.20248802
9. Assaf G, Davis H, McCorkell L, et al. What does COVID-19 recovery actually look like? An analysis of the prolonged COVID-19 symptoms survey by Patient-Led Research Team. Patient Led Research for COVID-19, 2020. <https://patientresearchcovid19.com/>.
10. Kluger BM, Krupp LB, Enoka RM. Fatigue and fatigability in neurologic illnesses: proposal for a unified taxonomy. Neurology. 2013;80: 409–416. doi:10.1212/WNL.0b013e31827f07be
11. Penner I, Paul F. Fatigue as a symptom or comorbidity of neurological diseases. Nature Reviews Neurology. 2017. doi:10.1038/nrneurol.2017.117
12. Gorna R, MacDermott N, Rayner C, O'Hara M, Evans S, Agyen L, et al. Long COVID guidelines need to reflect lived experience. The Lancet. 2021;397: 455–457. doi:10.1016/S0140-6736(20)32705-7

13. Brown DA, O'Brien KK, Josh J, Nixon SA, Hanass-Hancock J, Galantino M, et al. Six Lessons for COVID-19 rehabilitation from HIV rehabilitation. *Physical Therapy*. 2020;100: 1906–1909. doi:10.1093/ptj/pzaa142
14. Taylor AK, Kingstone T, Briggs TA, O'Donnell CA, Atherton H, Blane DN, et al. “Reluctant pioneer”: A qualitative study of doctors’ experiences as patients with long COVID. *Health Expectations*. n/a. doi:<https://doi.org/10.1111/hex.13223>
15. Wong TL, Weitzer DJ. Long COVID and myalgic encephalomyelitis/chronic fatigue syndrome (me/cfs)—a systemic review and comparison of clinical presentation and symptomatology. *Medicina*. 2021;57: 418. doi:10.3390/medicina57050418
16. Long COVID: let patients help define long-lasting COVID symptoms. *Nature*. 2020;586: 170–170. doi:10.1038/d41586-020-02796-2
17. Kedor C, Freitag H, Meyer-Arndt L, Wittke K, Zoller T, Steinbeis F, et al. Chronic COVID-19 Syndrome and Chronic Fatigue Syndrome (ME/CFS) following the first pandemic wave in Germany – a first analysis of a prospective observational study. *medRxiv*. 2021; 2021.02.06.21249256. doi:10.1101/2021.02.06.21249256
18. Chu L, Valencia IJ, Garvert DW, Montoya JG. Deconstructing post-exertional malaise in myalgic encephalomyelitis/ chronic fatigue syndrome: a patient-centered, cross-sectional survey. *PloS one*. 2018;13: e0197811. doi:10.1371/journal.pone.0197811
19. Holtzman CS, Bhatia S, Cotler J, Jason LA. Assessment of post-exertional malaise (PEM) in patients with myalgic encephalomyelitis (ME) and chronic fatigue syndrome (CFS): a patient-driven survey. *Diagnostics (Basel)*. 2019;9. doi:10.3390/diagnostics9010026
20. Centers for Disease Control and Prevention. Treating the Most Disruptive Symptoms First and Preventing Worsening of Symptoms. 19 Nov 2019 [cited 6 Mar 2021]. Available: <https://www.cdc.gov/me-cfs/healthcare-providers/clinical-care-patients-mecfs/treating-most-disruptive-symptoms.html>
21. Daynes E, Gerlis C, Chaplin E, Gardiner N, Singh SJ. Early experiences of rehabilitation for individuals post-COVID to improve fatigue, breathlessness exercise capacity and cognition – A cohort study. *Chron Respir Dis*. 2021;18: 14799731211015692. doi:10.1177/14799731211015691
22. Putrino D, Tabacof L, Tosto-Mancuso J, Wood J, Cortes M, Kontorovich A, McCarthy D, Breyman E, Nasr L, Neglia A, Duntz J, Bunt A, Herrera J, Kellner C. Autonomic conditioning therapy reduces fatigue and improves global impression of change in individuals with post-acute COVID-19 syndrome. 2021 [cited 8 Jun 2021]. doi:10.21203/rs.3.rs-440909/v1
23. Huang C, Huang L, Wang Y, Li X, Ren L, Gu X, et al. 6-month consequences of COVID-19 in patients discharged from hospital: a cohort study. *The Lancet*. 2021;397: 220–232. doi:10.1016/S0140-6736(20)32656-8
24. Li J, Xia W, Zhan C, Liu S, Yin Z, Wang J, et al. Effectiveness of a telerehabilitation program for COVID-19 survivors (TERECO) on exercise capacity, pulmonary function, lower limb muscle strength, and quality of life: a randomized controlled trial. *medRxiv*. 2021; 2021.03.08.21253007. doi:10.1101/2021.03.08.21253007

25. Group P-CC, Evans RA, McAuley H, Harrison EM, Shikotra A, Singapuri A, et al. Physical, cognitive and mental health impacts of COVID-19 following hospitalisation – a multi-centre prospective cohort study. medRxiv. 2021; 2021.03.22.21254057. doi:10.1101/2021.03.22.21254057
26. Sykes DL, Holdsworth L, Jawad N, Gunasekera P, Morice AH, Crooks MG. Post-COVID-19 Symptom Burden: What is Long-COVID and How Should We Manage It? Lung. 2021;199: 113–119. doi:10.1007/s00408-021-00423-z
27. Public Health Agency of Canada. Understanding COVID-19 testing. 21 Aug 2020 [cited 16 May 2021]. Available: <https://www.canada.ca/en/public-health/services/publications/diseases-conditions/understanding-covid-19-testing.html>
28. Centers for Disease Control and Prevention (CDC). COVID-19 and Your Health. 11 Feb 2020 [cited 16 May 2021]. Available: <https://www.cdc.gov/coronavirus/2019-ncov/testing/serology-overview.html>
29. Alwan NA, Johnson L. Defining long COVID: Going back to the start. Med (N Y). 2021;2: 501–504. doi:10.1016/j.medj.2021.03.003
30. Alwan NA. A negative COVID-19 test does not mean recovery. Nature. 2020;584: 170–170. doi:10.1038/d41586-020-02335-z
31. Yellen SB, Cella DF, Webster K, Blendowski C, Kaplan E. Measuring fatigue and other anemia-related symptoms with the Functional Assessment of Cancer Therapy (FACT) measurement system. Journal of Pain and Symptom Management. 1997;13: 63–74.
32. Minton O, Stone P. A systematic review of the scales used for the measurement of cancer-related fatigue (CRF). Annals of Oncology. 2008;20: 17–25. doi:10.1093/annonc/mdn537
33. Butt Z, Lai J, Rao D, Heinemann AW, Bill A, Cella D. Measurement of Fatigue in Cancer, Stroke, and HIV Using the Functional Assessment of Chronic Illness Therapy – Fatigue (FACIT-F) Scale. J Psychosom Res. 2013;74: 64–68. doi:10.1016/j.jpsychores.2012.10.011
34. Chandran V, Bhella S, Schentag C, Gladman DD. Functional assessment of chronic illness therapy-fatigue scale is valid in patients with psoriatic arthritis. Ann Rheum Dis. 2007;66: 936–939. doi:10.1136/ard.2006.065763
35. Kosinski M, Gajria K, Fernandes AW, Cella D. Qualitative validation of the FACIT-fatigue scale in systemic lupus erythematosus. Lupus. 2013;22: 422–430. doi:10.1177/0961203313476360
36. Cella D, Yount S, Sorensen M, Chartash E, Sengupta N, Grober J. Validation of the Functional Assessment of Chronic Illness Therapy Fatigue Scale relative to other instrumentation in patients with rheumatoid arthritis. J Rheumatol. 2005;32: 811–819.
37. Al-shair K, Muelleroval H, Yorke J, Rennard SI, Wouters EFM, Hanania NA, et al. Examining fatigue in COPD: development, validity and reliability of a modified version of FACIT-F scale. Health Qual Life Outcomes. 2012;10: 100. doi:10.1186/1477-7525-10-100
38. Acaster S, Dickerhoof R, DeBusk K, Bernard K, Strauss W, Allen LF. Qualitative and quantitative validation of the FACIT-fatigue scale in iron deficiency anemia. Health Qual Life Outcomes. 2015;13. doi:10.1186/s12955-015-0257-x

39. Hagell P, Höglund A, Reimer J, Eriksson B, Knutsson I, Widner H, et al. Measuring fatigue in Parkinson's disease: a psychometric study of two brief generic fatigue questionnaires. *J Pain Symptom Manage*. 2006;32: 420–432. doi:10.1016/j.jpainsymman.2006.05.021
40. Van Belle S, Paridaens R, Evers G, Kerger J, Bron D, Foubert J, et al. Comparison of proposed diagnostic criteria with FACT-F and VAS for cancer-related fatigue: proposal for use as a screening tool. *Support Care Cancer*. 2005;13: 246–254. doi:10.1007/s00520-004-0734-y
41. Cella D, Peterman A, Passik S, Jacobsen P, Breitbart W (1998) Progress toward guidelines for the management of fatigue. *Oncology (Huntingt)* 12:369–377.
42. Cotler J, Holtzman C, Dudun C, Jason L. A brief questionnaire to assess post-exertional malaise. *Diagnostics*. 2018;8: 66. doi:10.3390/diagnostics8030066
43. Jason LA, Evans MA, Porter N, Brown M, Brown AA, Hunnell J, et al. The development of a revised Canadian myalgic encephalomyelitis chronic fatigue syndrome case definition. 2010.
44. NINDS Common Data Elements (CDE) Group Post-Exertional Malaise Subgroup Summary. Myalgic Encephalomyelitis/Chronic Fatigue Syndrome. 2017 [(accessed on 29 October, 2019)]. Available online: https://www.commondataelements.ninds.nih.gov/sites/nindscde/files/Doc/MECFs/PEM_Subgroup_Summary.pdf. 2017.
45. Cotler J, Holtzman C, Dudun C, Jason LA. A Brief Questionnaire to Assess Post-Exertional Malaise. *Diagnostics (Basel)*. 2018;8. doi:10.3390/diagnostics8030066
46. US ME/CFS Clinician Coalition. ME/CFS Treatment Recommendations. Version 1 February 20, 2021. Available at: <https://mecfsccliniciancoalition.org/clinical-management/> (Accessed May, 2021).
47. Committee on the Diagnostic Criteria for Myalgic Encephalomyelitis/Chronic Fatigue Syndrome, Board on the Health of Select Populations, Institute of Medicine. Beyond Myalgic Encephalomyelitis/Chronic Fatigue Syndrome: Redefining an Illness. Washington (DC): National Academies Press (US); 2015. Available: <http://www.ncbi.nlm.nih.gov/books/NBK274235/>
48. Mitchell AJ, Bacon CJ, Moran RW. Reliability and Determinants of Self-Evaluation of Breathing Questionnaire (SEBQ) Score: A Symptoms-Based Measure of Dysfunctional Breathing. *Appl Psychophysiol Biofeedback*. 2016;41: 111–120. doi:10.1007/s10484-015-9316-7
49. Courtney R, Greenwood KM. Preliminary investigation of a measure of dysfunctional breathing symptoms: The Self Evaluation of Breathing Questionnaire (SEBQ). *International Journal of Osteopathic Medicine*. 2009;12: 121–127. doi:10.1016/j.ijosm.2009.02.001
50. Kiesel K, Rhodes T, Mueller J, Waninger A, Butler R. Development of a screening protocol to identify individuals with dysfunctional breathing. *Int J Sports Phys Ther*. 2017;12: 774–786.
51. Ware JE, Sherbourne CD. The MOS 36-item short-form health survey (SF-36). I. Conceptual framework and item selection. *Med Care*. 1992;30: 473–483.
52. Ware JE. SF-36 health survey update. *Spine (Phila Pa 1976)*. 2000;25: 3130–3139. doi:10.1097/00007632-200012150-00008

53. Silsbury Z, Goldsmith R, Rushton A. Systematic review of the measurement properties of self-report physical activity questionnaires in healthy adult populations. *BMJ Open*. 2015;5: e008430. doi:10.1136/bmjopen-2015-008430
54. Craig CL, Marshall AL, Sjöström M, Bauman AE, Booth ML, Ainsworth BE, et al. International physical activity questionnaire: 12-country reliability and validity. *Med Sci Sports Exerc*. 2003;35: 1381–1395. doi:10.1249/01.MSS.0000078924.61453.FB
55. Ainsworth BE, Haskell WL, Whitt MC, Irwin ML, Swartz AM, Strath SJ, et al. Compendium of physical activities: an update of activity codes and MET intensities. *Med Sci Sports Exerc*. 2000;32: S498-504. doi:10.1097/00005768-200009001-00009
56. The jamovi project (2021). jamovi (Version 1.6) [Computer Software]. Retrieved from <https://www.jamovi.org>.
57. R Core Team. R: A Language and Environment for Statistical Computing (Version 3.4.0). R Foundation for Statistical Computing. 2017;Vienna, Austria, <https://www.R-project.org>.
58. Cella D, Lai J-S, Chang C-H, Peterman A, Slavin M. Fatigue in cancer patients compared with fatigue in the general United States population. *Cancer*. 2002;94: 528–538. doi:10.1002/cncr.10245
59. Twomey R, Lavigne C, Martin T, Culos-Reed SN, Millet GY. Cardiopulmonary exercise testing for the measurement of maximal oxygen uptake in people with cancer-related fatigue: a retrospective analysis. *SportRxiv*; 2020. doi:10.31236/osf.io/db7uy
60. Stridsman C, Müllerova H, Skär L, Lindberg A. Fatigue in COPD and the Impact of Respiratory Symptoms and Heart Disease—A Population-based Study. *COPD: Journal of Chronic Obstructive Pulmonary Disease*. 2013;10: 125–132. doi:10.3109/15412555.2012.728642
61. Signorovitch J, Brainsky A, Grotzinger KM. Validation of the FACIT-fatigue subscale, selected items from FACT-thrombocytopenia, and the SF-36v2 in patients with chronic immune thrombocytopenia. *Qual Life Res*. 2011;20: 1737–1744. doi:10.1007/s11136-011-9912-9
62. Garratt AM, Stavem K. Measurement properties and normative data for the Norwegian SF-36: results from a general population survey. *Health and Quality of Life Outcomes*. 2017;15: 51. doi:10.1186/s12955-017-0625-9
63. Wolfe F, Michaud K, Li T, Katz RS. EQ-5D and SF-36 Quality of Life Measures in Systemic Lupus Erythematosus: Comparisons with Rheumatoid Arthritis, Noninflammatory Rheumatic Disorders, and Fibromyalgia. *J Rheumatol*. 2010;37: 296–304. doi:10.3899/jrheum.090778
64. Bentsen SB, Rokne B, Wahl AK. Comparison of health-related quality of life between patients with chronic obstructive pulmonary disease and the general population. *Scandinavian Journal of Caring Sciences*. 2013;27: 905–912. doi:<https://doi.org/10.1111/scs.12002>
65. Allen M, Poggiali D, Whitaker K, Marshall TR, van Langen J, Kievit RA. Raincloud plots: a multi-platform tool for robust data visualization. *Wellcome Open Res*. 2021;4: 63. doi:10.12688/wellcomeopenres.15191.2
66. Ziauddeen N, Gurdasani D, O'Hara ME, Hastie C, Roderick P, Yao G, et al. Characteristics of Long Covid: findings from a social media survey. *medRxiv*. 2021; 2021.03.21.21253968. doi:10.1101/2021.03.21.21253968

67. Pertl MM, Quigley J, Hevey D. “I’m not complaining because I’m alive”: barriers to the emergence of a discourse of cancer-related fatigue. *Psychol Health*. 2014;29: 141–161. doi:10.1080/08870446.2013.839792
68. McManimen S, McClellan D, Stoothoff J, Gleason K, Jason LA. Dismissing chronic illness: A qualitative analysis of negative health care experiences. *Health Care Women Int*. 2019;40: 241–258. doi:10.1080/07399332.2018.1521811
69. Jones JM, Olson K, Catton P, Catton CN, Fleshner NE, Krzyzanowska MK, et al. Cancer-related fatigue and associated disability in post-treatment cancer survivors. *J Cancer Surviv*. 2016;10: 51–61. doi:10.1007/s11764-015-0450-2
70. Micklewright D, St Clair Gibson A, Gladwell V, Al Salman A. Development and Validity of the Rating-of-Fatigue Scale. *Sports Med*. 2017;47: 2375–2393. doi:10.1007/s40279-017-0711-5
71. Sandler CX, Goldstein D, Horsfield S, Bennett BK, Friedlander M, Bastick PA, et al. Randomized evaluation of cognitive-behavioral therapy and graded exercise therapy for post-cancer fatigue. *J Pain Symptom Manage*. 2017;54: 74–84. doi:10.1016/j.jpainsymman.2017.03.015
72. Sheehan P, Denieffe S, Murphy NM, Harrison M. Exercise is more effective than health education in reducing fatigue in fatigued cancer survivors. *Support Care Cancer*. 2020;28: 4953–4962. doi:10.1007/s00520-020-05328-w
73. Twomey R, Yeung S, Wrightson J, Sung L, Robinson PD, Millet GY, et al. Including people with fatigue: a systematic review and meta-analysis of physical activity after cancer treatment. *SportRxiv*; 2020. doi:10.31236/osf.io/snhya
74. Twomey R, Martin T, Temesi J, Culos-Reed SN, Millet GY. Tailored exercise interventions to reduce fatigue in cancer survivors: study protocol of a randomized controlled trial. *BMC Cancer*. 2018;18: 757. doi:10.1186/s12885-018-4668-z
75. Twomey R, Yeung ST, Wrightson JG, Millet GY, Culos-Reed SN. Post-exertional malaise in people with chronic cancer-related fatigue. *J Pain Symptom Manag*. 2020;2: 407–416. doi:10.1016/j.jpainsymman.2020.02.012
76. Treating the Most Disruptive Symptoms First and Preventing Worsening of Symptoms | Clinical Care of Patients | Healthcare Providers | Myalgic Encephalomyelitis/Chronic Fatigue Syndrome (ME/CFS) | CDC. 30 Apr 2021 [cited 27 May 2021]. Available: <https://www.cdc.gov/me-cfs/healthcare-providers/clinical-care-patients-mecfs/treating-most-disruptive-symptoms.html>
77. Lim E-J, Kang E-B, Jang E-S, Son C-G. The Prospects of the Two-Day Cardiopulmonary Exercise Test (CPET) in ME/CFS Patients: A Meta-Analysis. *J Clin Med*. 2020;9. doi:10.3390/jcm9124040
78. Brown D (Host) (2021). The Long COVID Physio podcast [multiple Audio podcast episodes]. Available at: <https://longcovid.physio/podcast> Accessed: May 2021.
79. Humphreys H, Kilby L, Kudiersky N, Copeland R. Long COVID and the role of physical activity: a qualitative study. *BMJ Open*. 2021;11: e047632. doi:10.1136/bmjopen-2020-047632
80. Centers for Disease Control and Prevention. Treatment of ME/CFS. In: Myalgic Encephalomyelitis/Chronic Fatigue Syndrome (ME/CFS) [Internet]. 11 Feb 2021 [cited 8 Jun 2021]. Available: <https://www.cdc.gov/me-cfs/treatment/index.html>

81. Greenhalgh T, Knight M, A'Court C, Buxton M, Husain L. Management of post-acute covid-19 in primary care. *BMJ*. 2020;370. doi:10.1136/bmj.m3026
82. Boulding R, Stacey R, Niven R, Fowler SJ. Dysfunctional breathing: a review of the literature and proposal for classification. *European Respiratory Review*. 2016;25: 287–294. doi:10.1183/16000617.0088-2015
83. Reilly CC, Floyd SV, Lee K, Warwick G, James S, Gall N, et al. Breathlessness and dysfunctional breathing in patients with postural orthostatic tachycardia syndrome (POTS): The impact of a physiotherapy intervention. *Auton Neurosci*. 2020;223: 102601. doi:10.1016/j.autneu.2019.102601
84. Santino TA, Chaves GS, Freitas DA, Fregonezi GA, Mendonça KM. Breathing exercises for adults with asthma. *Cochrane Database Syst Rev*. 2020;2020. doi:10.1002/14651858.CD001277.pub4
85. Vidotto LS, de Carvalho CRF, Harvey A, Jones M. Dysfunctional breathing: what do we know? *J Bras Pneumol*. 2019;45. doi:10.1590/1806-3713/e20170347
86. Wormgoor MEA, Rodenburg SC. The evidence base for physiotherapy in myalgic encephalomyelitis/chronic fatigue syndrome when considering post-exertional malaise: a systematic review and narrative synthesis. *Journal of Translational Medicine*. 2021;19: 1. doi:10.1186/s12967-020-02683-4
87. Ladds E, Rushforth A, Wieringa S, Taylor S, Rayner C, Husain L, et al. Developing services for long COVID: lessons from a study of wounded healers. *Clin Med (Lond)*. 2021;21: 59–65. doi:10.7861/clinmed.2020-0962
88. Sisó-Almirall A, Brito-Zerón P, Conangla Ferrín L, Kostov B, Moragas Moreno A, Mestres J, et al. Long Covid-19: Proposed Primary Care Clinical Guidelines for Diagnosis and Disease Management. *Int J Environ Res Public Health*. 2021;18. doi:10.3390/ijerph18084350
89. Slade SC, Dionne CE, Underwood M, Buchbinder R. Consensus on Exercise Reporting Template (CERT): Explanation and Elaboration Statement. *Br J Sports Med*. 2016;50: 1428–1437. doi:10.1136/bjsports-2016-096651
90. Hoffmann TC, Glasziou PP, Boutron I, Milne R, Perera R, Moher D, et al. Better reporting of interventions: template for intervention description and replication (TIDieR) checklist and guide. *BMJ*. 2014;348: g1687. doi:10.1136/bmj.g1687
91. Altman DG, Moher D. Importance of Transparent Reporting of Health Research. In: EQUATOR Network [Internet]. 2014 [cited 15 Sep 2020]. Available: <https://www.equator-network.org/wp-content/uploads/2016/10/AltmanMoher-Chapter-1-Guidelines-for-Reporting-Health-Research-A-Users-Manual.pdf>
92. Eldridge SM, Chan CL, Campbell MJ, Bond CM, Hopewell S, Thabane L, et al. CONSORT 2010 statement: extension to randomised pilot and feasibility trials. *BMJ*. 2016;355: i5239. doi:10.1136/bmj.i5239
93. Government of Canada CI of HR. Strategy for Patient-Oriented Research. 18 Jun 2018 [cited 28 May 2021]. Available: <https://cihr-irsc.gc.ca/e/41204.html>