

1 **Title:** Feasibility and acceptability of Narrative Exposure Therapy to treat individuals with PTSD
2 who are homeless or vulnerably housed: A pilot randomized controlled trial.

3 Nicole E. Edgar¹, Alexandria Bennett², Nicole Santos Dunn³, Sarah E. MacLean^{1,4}, Simon
4 Hatcher^{1,5}

5 ¹ Clinical Epidemiology Program, Ottawa Hospital Research Institute, Ottawa, ON, Canada

6 ² School of Epidemiology and Public Health, Faculty of Medicine, University of Ottawa, Ottawa, ON,
7 Canada

8 ³ Ontario Institute for Studies in Education, University of Toronto, Toronto, ON, Canada

9 ⁴ School of Journalism and Communication, Carleton University, Ottawa, ON, Canada

10 ⁵ Department of Psychiatry, University of Ottawa, Ottawa, ON, Canada

11

12

13 *Corresponding author:

14 Simon Hatcher

15 The Ottawa Hospital Riverside Campus

16 1919 Riverside Drive, Suite 406

17 Ottawa, ON K1H 7W9

18 (613) 737-8999 ext. 81209

19 shatcher@toh.ca

20

21

22

23

24

25

26

27

28

29

30

31

32

33

34

35

36

37

38

39

40

41

42

43

44

45

46

47

48

49 **Abstract**

50

51 **Background:** Annually, there are least 235,000 individuals experiencing homelessness in
52 Canada. These individuals are more likely to have complex health issues, including mental
53 health issues such as post-traumatic stress disorder (PTSD). Diagnosed PTSD rates in the
54 homeless are more than double that of the general population, ranging between 21% and 53%.
55 In the homeless population, complex PTSD (cPTSD) appears to be more common than PTSD.
56 One treatment option for cPTSD is Narrative Exposure Therapy (NET), a brief trauma focused
57 psychotherapy which attempts to place the trauma within a narrative of the person's life.
58 Previous studies suggest NET may be an effective option for those who are homeless. In this
59 study, our primary aim was to assess the feasibility and acceptability of delivering community-
60 based NET to individuals with PTSD who were homeless or vulnerably housed.

61 **Methods:** This pilot randomized controlled trial (RCT) enrolled participants who were 18 years
62 of age or older, currently homeless or vulnerably housed, and with active symptoms of PTSD.
63 Participants were randomized to either NET alone or NET plus the addition of a genealogical
64 assessment. Demographic and clinical data were collected at the baseline visit. Symptoms of
65 PTSD, drug use and housing status were re-assessed at follow-up visits. Rates of referral,
66 consent and retention were also examined as part of feasibility.

67 **Results:** Twenty-two potential participants were referred to the study. Six were not able to be
68 contacted, one was excluded prior to contact, and the remaining 15 consented to participate. Of
69 these, one was a screen failure and 14 were randomized equally to the treatment arms. One
70 randomized participant was withdrawn for safety. The main point of attrition was prior to starting
71 therapy (3/13). Once therapy was initiated, retention was high with 80% of participants
72 completing all six sessions of therapy. Seven participants completed all follow-up sessions.

73 **Conclusion:** Delivering NET in a community-based setting and completing genealogical
74 assessments was both feasible and acceptable to those who are homeless or vulnerably

75 housed. Once therapy had been initiated, participants were likely to stay engaged. A large RCT
76 should be conducted to evaluate effectiveness and feasibility on an increased scale.

77 **Trial Registration:** clinicaltrials.gov, identifier NCT03781297. Registered: December 19,
78 2018, <https://clinicaltrials.gov/ct2/show/NCT03781297>.

79 **Keywords:** Narrative Exposure Therapy, complex post-traumatic stress disorder,
80 homelessness, trauma-informed care

81 **Key messages regarding feasibility**

82 1) *What uncertainties existed regarding the feasibility?*

83 Narrative Exposure Therapy (NET) is an individual trauma focused psychotherapy
84 recommended in guidelines for the treatment of post-traumatic stress disorder (PTSD).
85 However, in people who are homeless or vulnerably housed, there have been no
86 randomised controlled trials of trauma focused therapies for PTSD. We wanted to find
87 out if it was feasible to recruit and retain people who were homeless with PTSD in a
88 randomized controlled trial of a trauma informed therapy. We wanted to test the
89 acceptability and feasibility of offering NET alone compared to NET plus a genealogical
90 assessment. We also wanted to see if it was acceptable and practical to incorporate a
91 genealogical assessment as part of NET.

92 2) *What are the key feasibility findings?*

93 The key feasibility finding is that it is feasible to recruit and retain people who are
94 homeless into a randomized controlled trial of a trauma informed therapy. However,
95 recruitment could be improved by a better process for engaging potential participants
96 between referral and enrollment as about a third of the referred population were lost at
97 this stage. Not having trained therapists available also delayed recruitment.

98 3) *What are the implications of the feasibility findings for the design of the main study?*

99 We will explicitly develop materials for use at the referral step by potential referrers. This
100 will include an online training video which will address issues of trust and how to address
101 them when discussing the potential study. We will also develop a process for training
102 and recruiting therapists. Since this study was completed, we have done two further
103 training workshops to create a pool of potential therapists in Ottawa. We will also engage
104 with another site in Ontario to widen the population base of potential participants.

105 **Introduction**

106 *Background*

107 Homelessness is a rapidly growing problem in Canada with at least 235,000 individuals
108 experiencing homelessness every year(1,2). In reality this number is likely 3 to 4 times higher to
109 account for individuals with no real prospect of permanent housing options or “hidden
110 homeless”(1). In Canada, point in time counts have repeatedly shown year over year increases
111 in homelessness(2). Exacerbated by a nationwide housing crisis and a global pandemic,
112 accompanied by a reduction in shelter beds and social services, 2021 reports have shown that
113 the situation is continuing to worsen(3–5).

114 Individuals experiencing homelessness are more likely to have poor overall physical and mental
115 health, increased mortality rates and to experience more barriers to accessing healthcare(6,7)
116 compared to their housed counterparts. In one study nearly 50% of respondents indicated
117 having 3 or more physical health conditions, and 52% indicating having a mental health
118 diagnosis(6,8). Individuals who are homeless are more likely to be exposed to infectious
119 diseases, such as tuberculosis or hepatitis A (6); less likely to seek early treatment and less
120 likely to receive care equivalent to those who are housed (9–12); and face additional challenges
121 with adherence to treatment regimens (13).

122 *Trauma in the Homeless*

123 Exposure to trauma is a nearly universal experience among the vulnerably housed. It is
124 estimated that as many as 91% of individuals who are homeless have experienced at least one
125 traumatic event(14) and up to 99% have experienced childhood trauma(15,16) Diagnosed post-
126 traumatic stress disorder (PTSD) rates in the homeless are significantly higher than the
127 Canadian population, ranging between 21% and 53%(17–20), compared with a lifetime
128 prevalence of 9.2%(21) in the general population. In addition to trauma before becoming
129 homeless, the experience of being homeless increases the risk of exposure to traumatic events
130 (22). Many who are homeless are exposed to violence, with previous work showing 40% of
131 individuals reporting being assaulted and 21% of women reporting being raped in the previous
132 year (6). Lastly, the experience of being homeless is itself traumatic due to the loss of shelter,
133 safety, stability, and, often, social supports. Thus, being homeless continues to re-traumatize
134 and victimize the individual(23).

135 In ICD-11, a distinction is made between PTSD and complex PTSD (cPTSD). cPTSD is
136 characterised by experiencing trauma that is prolonged or repetitive from which escape is
137 difficult or impossible (for example, repeated childhood sexual or physical abuse)(24). This
138 results in the symptoms of PTSD plus problems in affect regulation, negative self-beliefs and
139 difficulty sustaining relationships. In the homeless population cPTSD appears to be more
140 common than PTSD, with one survey of 206 homeless adults finding 60% diagnosed with
141 cPTSD and 16% with PTSD(25,26).

142 This subsequently impacts how individuals engage in health care services, with individuals often
143 experiencing distrust of both people, including healthcare providers, and services(27). It may
144 also lead to self-medication with street drugs to address the symptoms of PTSD. There are also
145 systemic barriers to accessing care which include difficulties finding transportation to
146 appointments, institutional rules that effectively ban people who are homeless, feelings of
147 stigmatization(9,11), having proof of health insurance, and access to no-cost mental health

148 services(28). Most recently, the shift to primarily virtual mental healthcare has further isolated
149 this population from accessing services. Providing therapy in this population should consider the
150 challenges of structural exclusion that this population faces with respect to healthcare services
151 and providers, as well as the unique symptoms associated with cPTSD.

152 *Narrative Exposure Therapy*

153 Narrative Exposure Therapy (NET) is a brief trauma focused psychotherapy and was developed
154 based on principles derived from exposure therapy, cognitive behaviour therapy and testimony
155 therapy(29). NET attempts to place the trauma within a narrative of the person's life. This
156 therapy has been evaluated in traumatized populations with a focus on survivors of conflict and
157 organized violence(29). NET is recommended for treatment of PTSD in several guidelines, such
158 as the American Psychological Association guidelines (30) and the National Institute for Health
159 and Care Excellence guidelines(31). There are three therapeutic components which consist of
160 education about the effects of trauma, constructing a biography and narration of traumatic
161 events. The autobiography is recorded by the therapist and is built upon with each subsequent
162 reading. A focus of the therapy is to integrate the generally fragmented reports of traumatic
163 experience into a coherent narrative and to bring about the habituation of emotional responses
164 to reminders of the traumatic event(29). There have been no trials of NET in homeless adults,
165 although one study of NET with 32 street children found a reduction in self-reported
166 offences(32). Anecdotal evidence of using this approach in the homeless population suggests
167 that constructing an autobiography helps to give meaning to problems and provides the initial
168 steps in constructing a core sense of belonging and identity. There is also some evidence that
169 NET may have advantages in treating complex traumatization seen in disadvantaged
170 populations compared to typical first line therapy, such as Prolonged Exposure Therapy(33).

171 *Incorporation of Genealogy*

172 Genealogy has been used in family therapy(34) and counseling(35) to promote identity(36) and
173 develop connections to ancestors. This can improve relationships with living relatives and
174 potentially address the negative self-beliefs which are part of cPTSD. A systematic review of the
175 acceptability of health and social interventions for people who were homeless found that having
176 a positive self-identity improved links to services(27). The link to those who have gone before is
177 a common theme in indigenous health(37). Previous experience of using problem solving
178 therapy, with a focus on a sense of belonging, in Māori in New Zealand who had presented to
179 hospital with intentional self-harm resulted in improved outcomes after a year compared to usual
180 care. The focus on sense of belonging helped to re-frame individuals' narrative beyond the
181 immediate family. The metaphor used by participants was that knowing about previous
182 generations helped to deepen their roots so they were less likely to be blown over by life's
183 storms(38).

184 *This Trial*

185 As of February 2021, there were no randomized controlled trials of trauma focused therapies in
186 people who are homeless with PTSD. The aim of this study is to test the feasibility and
187 acceptability of delivering community-based NET to individuals with PTSD who were homeless
188 or vulnerably housed. We also extended the option of genealogist support to evaluate the
189 potential impact of this experience on the development of their narrative and self-identity. This
190 trial forms part of the preparation phase of a multi-phase optimization strategy (MOST) for
191 developing and delivering treatment for PTSD in people who are homeless using trauma
192 informed care. Using the outcomes from this study, we will design a full-scale RCT to evaluate
193 and optimize a model of trauma-informed care incorporating NET for the treatment of PTSD in
194 the homeless.

195 **Methods**

196 **Trial Design**

197 We conducted a single center feasibility, open-label pilot randomized controlled trial with two
198 parallel arms in Ottawa, Canada. The two arms were NET alone (NET) or NET plus a
199 genealogical assessment (NET+G). This trial is reported using the Consolidated Standards of
200 Reporting Trials extension for Feasibility and Pilot Trials (CONSORT)(39).

201 **Participants**

202 Participants were individuals with PTSD, diagnosed or suspected, who were experiencing
203 homelessness or were vulnerably housed at the time of enrolment. Participants were referred to
204 the study by clinical staff through Ottawa Inner City Health and the Royal Ottawa Hospital's
205 Psychiatric Outreach Team. Ottawa Inner City Health provides comprehensive health services,
206 including mental health care to Ottawa's homeless community. The Psychiatric Outreach Team
207 is a community-based short-term service providing support and referrals to individuals who are
208 homeless or vulnerably housed experiencing severe and persistent mental illness. Eligibility
209 criteria are described in Figure 1.

210 **Figure 1. Participant Eligibility Criteria**

Inclusion Criteria

- 18 years of age or older
- Be referred to the study by the Psychiatric Outreach Team or by Ottawa Inner City Health
- Meet DSM-5 criteria for PTSD, as measured by the Mini International Neuropsychiatric Interview (MINI)
- Be homeless or vulnerably housed at the time of their screening visit, as measured by the Housing Status Questionnaire.

Exclusion Criteria

- Unable to speak and understand English
- Unwilling to attend Narrative Therapy session for a period of six weeks
- Unwilling to return to a designated therapy location to complete study follow-up appointments
- Presents to their study screening visit acutely intoxicated
- Be, in the opinion of the Investigator, unlikely to commit to a 12-week study
- Poses a risk of harm to study staff or other clients.

211

212 Interventions

213 Participants were randomized to one of two groups: Narrative Exposure Therapy only (NET) or
214 Narrative Exposure Therapy supplemented with a genealogist assessment (NET+G). Two
215 therapists, a psychiatrist [SH] and a social worker [MSW – KB], who had received specialist
216 training in NET, provided the therapy in the study. NET was delivered as described by Schauer
217 et al(29). The components of NET as delivered in this study are outlined in Table 1. Participants
218 attended weekly visits with the therapist at the location of their choosing. Flexibility in timing was
219 offered to participants who found it challenging to attend weekly visits. Participants randomized
220 to the NET+G arm were connected to a genealogist [MG] after their baseline visit to complete a
221 family history interview and voluntary genetic testing. Participants were provided with a full
222 family history report detailing any information discovered through the interview and matching
223 with public genealogy databases. For this study, Family Tree DNA was used for genetic
224 matching.

225 **Table 1. Components of Narrative Exposure Therapy**

Part 1 – Session 1	Completion of structured diagnostic measures (CAPS-5, PCL-5 with LEC and Criterion A) Psychoeducation and outline of the therapeutic plan
Part 2 – Session 2	Construction of the Lifeline – a visual biographical overview of significant life events
Part 3 – Sessions 3-6	<i>Sessions 3 -5</i> Narration of the lifeline from birth through each event <ul style="list-style-type: none">• Traumatic events are confronted and reprocessed until arousal response decreases• At follow-up sessions, the draft narrative is read through collaboratively, focusing on important events.• The narrative is updated and corrected, providing more clarity with each read-through• This is repeated until a final version of the narrative is completed (by Session 6) <i>Session 6</i> <ul style="list-style-type: none">• The final narrative is read through entirely and signed by the participant and therapist.• The participant is provided a copy of their narrative

226 *Adapted from Schauer et al 2011.*

227 Participants were met in the community at a mutually agreed upon location. Visit locations
228 included shelters, outreach offices, community day programs and our research office. Locations
229 were chosen to minimize participant burden and increase feelings of comfort and safety. Any
230 required travel costs were covered by the study.

231 After referral to the study, participants met with a trained research assistant to complete the
232 informed consent process and screening procedures. Screening procedures to confirm eligibility
233 involved a structured interview completed by the research assistant to confirm active symptoms
234 of PTSD and housing status. Once eligibility was confirmed, participants completed
235 assessments collecting demographics and evaluating general mental health, alcohol and
236 substance use, quality of life, health care utilization, and cognitive state. We collected
237 sociodemographic information on gender (male, female, transgender, non-binary), self-identified
238 ethnicity, highest level of education completed, marital status and medical history.

239 **Outcomes**

240 The primary outcomes of this study were the feasibility and acceptability of a completing an
241 RCT of NET in the homeless population. The primary measure of feasibility was recruiting the
242 planned sample size over six months. In addition, we wanted to determine the acceptability of
243 NET in this population which we defined as at least 50% of those approached about the study
244 consenting to take part. Lastly, we wanted to see if it was feasible to collect outcome data in this
245 population which we defined as restricting study dropouts or lost to follow ups to 25% of
246 participants.

247 We also wanted to see if NET treatment in this population resulted in better health-related
248 outcomes including: a decrease in the severity of PTSD symptoms, change in housing status,
249 improved overall health, better health-related quality of life and lower rates of alcohol/drug
250 misuse. Other secondary outcomes included creating a training manual for Narrative Exposure
251 Therapy in this population that also included the incorporation of a genealogist.

252 Measures and timing of administration are outlined in Table 2. Housing status was collected
253 prior to entry into the study and at each follow-up visit. Participants self-identified their housing
254 among the following options: living in a shelter, living with a friend, living with family,

255 supportive/transitional housing, paying for a space, no housing options, or other. Participants
 256 could select more than one option if applicable. The Addiction Severity Index interview(40) was
 257 completed at baseline, weeks 4, 8 and 12 to evaluate both lifetime substance use and use in the
 258 past 30 days. We calculated the total number of days of use in the past 30 days for each time
 259 point to evaluate any changes in drug or alcohol use between visits. The SF-20 was used from
 260 February 2019 until September 2019, when it was replaced with the EQ-5D-5L. The decision
 261 was made to change measures as participants reported substantial difficulty in completing the
 262 SF-20 and interpreting the questions. The EQ-5D-5L is much shorter, with only 5 questions plus
 263 the visual analogue scale, and was much better tolerated as a measure. Participants who
 264 started with the SF-20 continued to use it through their follow up time points.

265 **Table 2. Time and Events Schedule**

Visit/Measure	Measure Description	Screening/ Baseline	Week 1	Week 4	Week 8 Follow-up	Week 12 Follow-up
Housing Status	A brief self-reported measuring describing participant's housing status	X	-	X	X	X
MINI – PTSD Module	A structured interview assessing symptoms of PTSD in the past 30 days.	X	-	-	-	-
CAPS-5	A structured interview, administered during therapy, to assess a traumatic event(s) and associated symptoms in the past 30 days	-	X	-	-	-
PCL-5 with Life Events Checklist	A 20 item self-report evaluating the severity of PTSD symptoms over the previous 30 days; LEC assesses exposure to 16 events known to potentially result in PTSD	-	X	-	X (PCL-5 only)	X (PCL-5 only)
Demographics	Self-reported sociodemographic variables including gender, sexual orientation, ethnicity, education, and marital status	X	-	-	-	-
Addiction Severity Index	A semi-structured interview used to assess severity of substance abuse problems, both lifetime and past 30 days	X	-	X	X	X
AUDIT	A brief 10-item self report questionnaire assessing alcohol misuse	X	-	X	X	X
ADHD Self-Report Scale	An 18-item self-report questionnaire that assesses the inattentive (6 items) and hyperactive/impulsive (12 items) dimensions of ADHD	X	-	-	-	-
Montreal Cognitive Assessment	A brief interview assessing multiple cognitive domains including visuo-constructional skills; naming; memory; attention; sentence repetition; verbal fluency; abstraction; delayed recall; and, orientation.	X	-	-	-	-
Short Form Health Survey (SF-20) or EQ-5D-5L	The SF-20 was used from February 2019 – September 2019. This is a 20-item questionnaire that assesses various health outcomes, and the extent to which health related problems interfere with daily life.	X	-	X	X	X

	The EQ-5D-5L was used from September 2019 – end of study. The EQ-5D-5L is 5-item questionnaire that assesses health-related quality of life.					
Health Care Costs	A self-report questionnaire asking about missed time from work/volunteer/school and utilization of healthcare services.	X	-	X	X	X

266

267 **Sample Size**

268 We planned to enroll 12 participants in each arm for a total sample of 24 participants(41). The
269 study was not powered to test efficacy outcomes.

270 **Randomization and blinding**

271 Randomization was completed by the Ottawa Methods Centre at the Ottawa Hospital Research
272 Institute (OHRI) with allocations kept in sequential sealed opaque envelopes at the OHRI study
273 office. Participants were randomized in a 1:1 allocation with no restrictions. After providing
274 consent and confirming eligibility, participants were randomized by a trained research assistant
275 according to the allocation in the sealed envelope.

276 **Statistical methods**

277 All statistical analyses were conducted using IBM SPSS 26. Non-parametric data were
278 described using frequencies and percentages. Continuous data were described using measures
279 of central tendency (mean and standard deviation) and bivariate relationships were explored
280 using independent samples t-tests (t) and analyses of variance (ANOVA). Paired samples t-
281 tests were conducted to explore any within subject relationships for PCL-5 score and substance
282 use patterns. Bivariate relationships were detected using two-sided Fisher's Exact Test (2x2
283 contingency tables), except for one-sided tests where noted in the tables.

284 **Qualitative Evaluation**

285 Qualitative interviews were planned with participants who completed the study and service
286 providers including shelter, outreach, and day program staff. The service provider interview
287 evaluated their participation in the study, their perceived need for community-based NET to be
288 implemented in this population and what supports might be necessary to implement either a
289 large-scale trial or a permanent service offering NET to individuals who are homeless or
290 vulnerably housed.

291 *Ethics and Informed Consent*

292 Research ethics approval was provided by the Royal Ottawa's Institute of Mental Health
293 Research Ethics Board (IMHR-REB ID: 2017042) and the Ottawa Health Sciences Network
294 REB (OHSN-REB ID: 20180895-01H). Written informed consent was obtained from the
295 participants who were completely informed of the study purposes and procedures.

296 **Results**

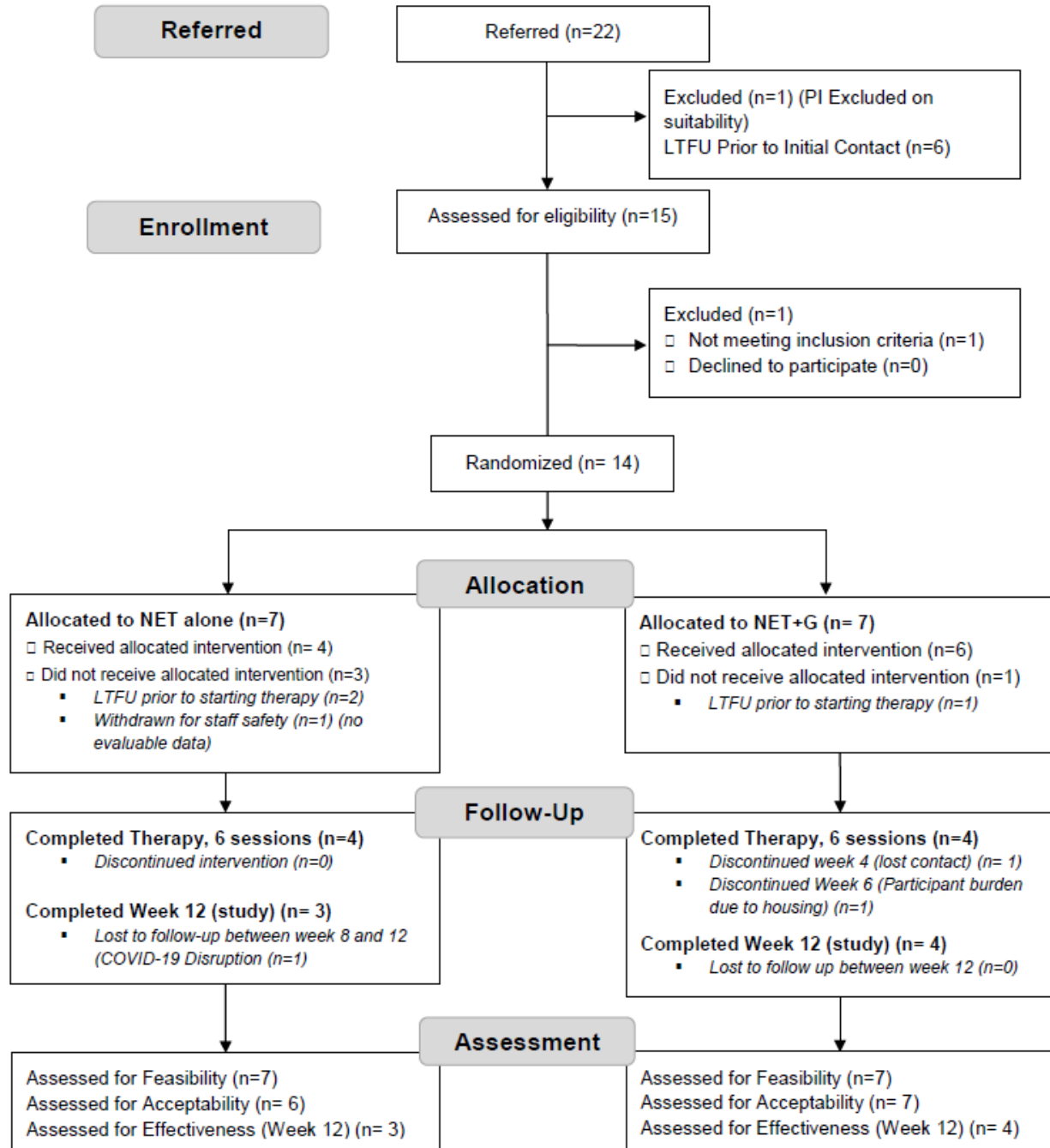
297 *Participant flow*

298 Participant flow is outlined in Figure 2. Recruitment for this study took place between February
299 2019 and February 2020 and a total of 22 people were referred to the study, (one of these was
300 immediately before the first pandemic lockdown in late February 2020). Recruitment was
301 stopped on two occasions, for a total of three months, as therapists had reached their maximum
302 case load. Five participants were referred to the study after the start of the COVID-19 pandemic
303 in March 2020, but we were unable to recruit them as there were no safe places to meet face to
304 face as most drop-in centres or other spaces were closed because of COVID-19. We have not
305 included them in the tables. Virtual appointments were not an option for this population due to a
306 lack of technology, access to the internet, or safe and private places to conduct therapy.

307

308

309 **Figure 2. Consolidated Standards of Reporting Trials flow and attrition diagram.**



310

311

312 The clinical teams referred 22 people to take part in the study over the nine months that the
313 study was accepting potential participants. One potential participant was deemed ineligible by
314 the Principal Investigator due to a significant brain injury and associated psychosis. Six (6/22,
315 27%) potential participants could not be contacted to arrange a baseline visit and consent,
316 leaving 15/22 (68%) who were assessed for eligibility for the study. One of these potential
317 participants did not meet the inclusion criteria. This participant consented but was unable to
318 complete the screening procedures. This led the team to evaluate the administration of
319 screening measures to reduce burden on participants.

320 This left 14 participants who were randomized. Seven were randomised to NET and seven to
321 NET+G. One participant who consented to the study and was randomized to the NET alone arm
322 did not complete their baseline assessment. While consent, screening and baseline typically
323 occurred at one visit, this participant had a particularly long screening session, and the baseline
324 assessments were scheduled to occur during a second encounter. The participant did not
325 present for this visit and further information from the referrer showed a possible safety risk to the
326 therapists, so this potential participant was withdrawn. This participant had no evaluable data
327 and was not included in the evaluation of acceptability or effectiveness.

328 Three people were lost to follow-up between consenting to take part in the study and the first
329 therapy session, one in the NET+G group and two in the NET group.

330 Every effort was made to provide participants with both their personal narrative and genealogy
331 report before their final NET session. In particular, delays with genetic matching meant the first
332 participant in the NET+G arm did not receive their report until after their final session.

333 Adjustments were made in the timing of the genealogy interview so that all subsequent
334 participants received their reports prior to completing therapy, and typically around week 4.

335 *Feasibility*

336 We were unable to recruit our desired sample size within the goal of 6 months. The enrollment
337 of 15 participants took place over approximately 9 months. This was primarily due to a shortage
338 of trained therapists to take on participants. For the first 5 months, only one therapist was
339 involved in the study. As the study progressed, we were able to recruit one additional trained
340 therapist.

341 *Study Acceptability*

342 Figure 2 outlines the retention rates at various stages of the study. While we did not meet the a
343 priori threshold of 75% retention at week 12, 61.5% (8/13) of participants completed at least one
344 post-therapy follow-up assessment visit (week 8). Of the ten who started therapy, seven
345 completed all study visits up to week 12. Of three participants who did not complete the week 12
346 assessment, the first completed the week 8 study visit and was interested in completing week
347 12, however, the final visit was rescheduled due to personal circumstances and was eventually
348 cancelled due to the COVID-19 pandemic; the second dropped out at week 6 as they found the
349 sessions too triggering and difficult to complete while sleeping rough; and, the third individual
350 was lost to follow up at week 4 but re-engaged with the clinical team at a later date.

351 *Therapy Acceptability*

352 Of the 10 participants who started therapy, eight (80%) completed all 6 sessions. All participants
353 who were randomized to the NET+G arm (n=6) accepted the referral to complete their family
354 history.

355 *Demographics*

356 The demographics of participants are outlined in Table 3. Comparable to community
357 demographics, our sample contained more males than females (61.5%, 8/13), with a lifetime
358 history of drug use (84.6% ,11/13) and alcohol use (84.6% ,11/13). The sample self-identified
359 primarily as white (65%, 8/13), but also First Nations (7.7%, 1/13), Métis (2/13, 15.4%), Asian

360 (7.7%, 1/13), and Other (Hispanic) (7.7%, 1/13). Within this identification, two people also
 361 identified themselves as mixed-ethnicity (Métis/White and First Nations/Black). Educational
 362 background was diverse with 38.5% (5/13) having less than high school, 30.8% (4/13) having a
 363 high school diploma or equivalent, 15.4% (2/13) with a college or university education, and
 364 15.4% (2/13) with a graduate or professional degree. Marital status was also varied, with 46.2%
 365 (6/13) identifying as single, 7.7% (1/13) as married, 23.1% (3/13) as separated, 7.7% (1/13) as
 366 divorced and 15.4% (2/13) as widowed. No individuals identified as transgender or non-binary.
 367 No participants indicated common-law status.

368 **Table 3. Demographic Characteristics**

Demographic Characteristic	Total (n=13) f (%)	NET (n=6) f (%)	NET+G (n=7) f (%)
Gender			
Male	8 (61.54)	3 (50.00)	5 (71.43)
Female	5 (38.46)	3 (50.00)	2 (28.57)
Age (years), mean (SD)	42.38 (8.15)	41.00 (4.34)	43.57 (10.66)
Ethnicity			
First Nations	1 (7.69)	0 (0)	1 (14.29)
Metis	2 (15.40)	1 (16.67)	1 (14.29)
Asian	1 (7.70)	1 (16.67)	0 (0.00)
White/Caucasian	8 (61.54)	3 (50.00)	5 (71.43)
Other	1 (7.7)	1 (16.67)	0 (0.00)
Education			
Below High School	5 (38.46)	2 (33.33)	3 (23.1)
High School or Equivalent	4 (30.77)	1 (16.67)	3 (23.1)
College or University	2 (15.40)	1 (16.67)	1 (7.7)
Graduate or Professional Degree	2 (15.40)	2 (33.33)	0 (0.00)
Marital Status			
Single	6 (46.15)	2 (33.33)	4 (57.14)
Married	1 (7.70)	0 (0.00)	1 (14.29)
Separated	3 (23.08)	2 (33.33)	1 (14.29)
Divorced	1 (7.7)	1 (16.67)	0 (0.00)
Widowed	2 (15.40)	1 (16.67)	1 (14.29)

369

370 *PTSD Scores*

371 All participants had experienced multiple traumatic events in their lifetime, with childhood trauma
 372 being common, as reported on the Life Events Checklist. With respect to symptom severity,
 373 baseline PCL-5 scores did not differ ($F_{(1,13)}=1.169, p=.311$) between those allocated to NET
 374 ($M=66.00, SD=6.68$) or NET+G ($M=60.67, SD=8.17$).

375 PTSD scores decreased in both groups over the course of the study. Assessing the change in
 376 symptom severity within subjects for the 7 who completed post-therapy follow-up to week 12,
 377 showed a statistically significant improvement in PTSD scores (Table 4). Prior to initiating
 378 therapy, the average PCL-5 score was 64.14 (SD 8.80). At the 12 week follow-up, participants
 379 reported an average decrease of 17.29 points (SD 6.18), for a total PCL-5 score of 46.86 (SD
 380 16.63) ($t=2.798$, $df=6$, $p=.031$, $d=1.057$). This reduction in severity within subjects is also
 381 considered a clinically meaningful change, defined as a reduction in total score by 10-20
 382 points(42).

383 **Table 4. Within subject outcomes**

Time Point	PCL-5 Scores (n=7)			Drug Use (Previous 30 Days) (n=7)			Alcohol Use (Previous 30 Days) (n=7)		
	M	SD	Paired Samples t-test	M	SD	Paired Samples t-test	M	SD	Paired Samples t-test
Week 0	64.14	8.80	$t= 2.798$ $df 6,$ $p= .031$	11.57	14.74	$t= 1.00$ $df 6,$ $p= .356$	1.00	1.73	$t= 1.08$ $df 6,$ $p= .321$
Week 12	46.86	16.63	$d=1.057$	10.71	14.27		0.43	0.787	

384

385 *Substance Use*

386 A lifetime history of substance use was common in this sample, with 84.6% (11/13) reporting a
 387 history of drug or alcohol misuse. At enrolment, 6 individuals reported current drug use (46.2%,
 388 6/13) and 2 reported alcohol use (15.4%, 2/13) in the 30 days prior, while 5 participants reported
 389 no drug or alcohol use at all during this period (38.5%, 5/13). Alcohol or drug use did not change
 390 over the duration of the study (Table 4). Prior to initiating therapy, drug use was an average of
 391 11.57 days (SD 14.47 days), while alcohol use averaged 1 day (SD 1.73 days). At week 12,
 392 there was no significant decrease in drug use ($t=1.00$, $df= 6$, $p=.356$) or alcohol use ($t=1.08$,
 393 $df=6$, $p=.321$).

394 Substance use appeared to have no relationship to whether or not a participant completed the
 395 study, with 23.1% of participants using drugs at enrolment completing the study ($p=.617$,

396 Fisher’s Exact Test, 1-tailed) compared to 30.7% of non-users completing the study.
 397 Participants who did not complete the study were split, with 23.1% using drugs at enrolment and
 398 23.1% not using drugs (Table 5).

399 **Table 5. Study completion status.**

		Baseline N=13	
		Study Complete f (%)	Study Not Complete f (%)
Drug Use (Past 30 Days)	Yes	3/13 (23.1)	3/13 (23.1)
	No	4/13 (30.7)	3/13 (23.1)
	<i>Fisher’s Exact Test</i>	p= .617 (1-tailed)	
Alcohol Use (Past 30)	Yes	2/13 (15.4)	0/13 (0)
	No	5/13 (38.5)	6/13 (46.1)
	<i>Fisher’s Exact Test</i>	p= .269 (1-tailed)	
Housing Status	Shelter/Rough	2/13 (15.4)	5/13 (38.5)
	Other	5/13 (38.5)	1/13 (7.6)
	<i>Fisher’s Exact Test</i>	p= .078 (1-tailed)	

400
 401 Similarly, no statistically significant difference was found between those who completed the
 402 study and were using alcohol (2/13, 15.4%) or not using alcohol (5/13, 38.5%) compared to the
 403 six participants not using alcohol (6/13, 46.2%) who did not complete the study (p=.269, Fisher’s
 404 Exact Test, 1-tailed) (Table 5).

405 *Housing Status*

406 Housing status over the duration of the study is described in Table 6. At baseline, more than
 407 half the participants were living in a shelter (53.8%, 7/13), followed by supportive/transitional
 408 housing (15.4%, 2/13), while 1 individual was living with a friend (7.7%), and another was
 409 paying for a living space (7.7%). Several individuals added specifiers to their situation including
 410 that they were paying for a living space because they received a subsidy or assistance from a
 411 family member. During the study, one individual (7.7%) left the shelter and was not able to find
 412 other housing options. Of those who did not complete the study, 38.5% (5/13) resided in a
 413 shelter baseline (p=.078, Fisher’s Exact Test, 1-tailed).

414 **Table 6. Housing status.**

Housing Status (N=13)	Baseline	Week 4	Week 8	Week 12
	f (%)			
Shelter	7 (53.8)	3 (23.1)	4 (30.8)	3 (23.1)
With Family	1 (7.7)	1 (7.7)	1 (7.7)	1 (7.7)
With Friend	0 (0)	0 (0)	0 (0)	1 (7.7)
Supportive/Transitional Housing	4 (30.8)	2 (15.4)	1 (7.7)	1 (7.7)
Paying for a Space	1 (7.7)	1 (7.7)	2 (15.4)	1 (7.7)
No Housing Options	0 (0)	1 (7.7)	0 (0)	0 (0)
Missing	0 (0)	1 (7.7)	0 (0)	0 (0)
Withdrawn	0 (0)	4 (30.8)	5 (38.5)	6 (46.2)

415

416 Of those who completed the study, 3 individuals remained at the shelter (3/7), while others were
 417 staying with friends (1/7), staying with family (1/7), living in supportive housing (1/7), or paying
 418 for a space (1/7). Several individuals experienced changes to their housing situation: two moved
 419 from supportive living to the shelter, one from the shelter to living with a friend, one from
 420 supportive housing to paying for a space, one from living with family to paying for a living space.
 421 Of the 6 individuals who did not complete the study, 4 were at the shelter, 1 was “sleeping
 422 rough”, and 1 was paying for a living space.

423 ***Qualitative Evaluation***

424 We were unable to complete qualitative interviews with the participants because of COVID-19
 425 restrictions. There were no safe places to conduct interviews and using technology was not
 426 feasible as discussed above. Four service providers completed a virtual semi-structured
 427 qualitative interview with an unfamiliar research staff member. The service providers had
 428 varying backgrounds including two staff with Psychiatric Outreach who referred clients to the
 429 study, one manager at a shelter, and one manager at a community day program, both of whom
 430 facilitated study activities.

431 ***Study Participation***

432 Study providers identified no difficulties in communicating with the study team. Generally,
433 expectations were met with respect to each individual's anticipated role in the study. One
434 service provider identified that additional guidance on who might be a good candidate and what
435 role they need to play after enrolment in the study would be beneficial. All four service providers
436 felt that both study participation and the delivery of NET integrated well with the services that
437 they currently offer. Clinical providers felt that it was beneficial to have resources that they could
438 offer these clients, in particular noting the benefit to clients not having to attend the hospital for
439 care.

440 *Need for a Trauma Therapy*

441 The service providers unanimously expressed the need for this service within their community.
442 One provider when asked about the need for NET as a service noted: "It's just more than
443 needed, it's irreplaceable, without it there's nothing. Nothing, like, is really happening right now
444 so it would be great to implement this in a community setting on a broader scale." Similarly, a
445 second provider noted that NET was "absolutely necessary, nothing to really add, there needs
446 to be this type of service for this population, the challenge isn't figuring out if there's a need but
447 more how can we provide what's needed so definitely a need."

448 *Implementation of NET as a Service*

449 The service providers were supportive of both the conduct of a large-scale trial all expressed
450 interest in participating in such an initiative. With respect to how to offer NET on a larger scale,
451 the lack of resources, both time and trained staff, was a common concern, however they were
452 all amenable to a centralized resource as an option to delivery therapy services in the
453 community as well. Despite the potential staffing constraint, the service providers indicated their
454 willingness to navigate any barriers that may exist to continuing to offer this therapy in their

455 respective settings. All indicated interest in having a role in further research studies and were
456 keen to facilitate this research.

457 **Discussion**

458 *Generalizability*

459 The sample enrolled in the study is largely representative of the homeless population, both in
460 Ottawa and nationally. It is reasonable to assume that our results may be generalizable and
461 valid across other homeless populations. However, it would be worthwhile conducting a large
462 RCT in multiple communities to increase diversity and the inclusion of people experiencing
463 homelessness in smaller centres.

464 *Interpretation*

465 Individuals experiencing homelessness have long been excluded from clinical trials with the
466 assumption that they would be challenging to engage or retain. We found that, while not quite
467 meeting the pre-defined thresholds for feasibility and acceptability, conducting a RCT of a
468 mental health intervention in the community was both feasible and acceptable. To improve
469 feasibility and acceptability during a large scale RCT, several lessons learned from this pilot can
470 be used to improve both engagement and retention.

471 A lack of therapists trained in NET had the largest impact on meeting our feasibility target of
472 recruiting 24 individuals within 6 months. The COVID-19 pandemic also impacted recruitment
473 with no individuals enrolled after February 2020. NET training is limited with only 2 offerings
474 occurring in the Ottawa area within the 3-year study period. The Principal Investigator [SH]
475 recently organized two virtual training session with high levels of community interest. Building
476 therapist capacity will be critical to the success of implementing a large RCT and in offering NET
477 as a standard of care long term in the community. The provision of NET by health professional

478 students supervised by experienced therapists is also a model that needs to be explored
479 especially given most universities' commitment to social accountability in their communities.

480 While our initial target of 75% retention was not met, our retention rate is consistent with
481 literature around engagement in psychotherapy, while our proportion of participants for
482 completing all sessions of therapy (80%) exceeded average retention rates(43,44). Given the
483 considerations of working with individuals who are homeless and the potential challenges of
484 engaging with trauma therapy, we feel that these rates are high enough to deem the therapy
485 and participation in a study to be acceptable.

486 What is striking is that the drop-out rate before starting therapy is much higher than after starting
487 treatment, with 12/22 (55%) of potential participants dropping out prior to therapy compared to
488 only two out of ten (20%) after starting therapy. It is likely that this is due to a combination of
489 three factors. First is that referrers to the study need to be given clear guidance as to who is
490 potentially eligible and who is not. Also providing information about what happens after therapy
491 is completed would be helpful. Second, there are real practical difficulties in contacting people
492 who are vulnerably housed in a way and at a time which is convenient to them. Third, there are
493 the issues of credibility and trust. People who have experienced trauma, especially in childhood,
494 have learnt not to trust carers and many may have had bad experiences in their contacts with
495 the health system. The contractual process of signing an informed consent form is probably not
496 sufficient to gain trust without other actions. These could include paying attention to privacy of
497 data, linking the study to creditable organizations and being clear about who has what role in
498 the research team and how long this will last. Requiring potential participants to see several
499 unfamiliar people before starting therapy may also impact on trust. Training research assistants
500 in helping people with complex PTSD and how it impacts on relationships is important. This
501 would be guided by trauma informed research practices, such work done by Voith and
502 colleagues(45), and would seem to be an important component of a bigger trial.

503 Substance use at the time of enrolment did not appear to impact whether or not a participant
504 was likely to complete therapy and follow-up sessions, suggesting that it is feasible to include
505 those using substances in research and therapy. However, staying in a shelter at the time of
506 enrolment did approach significance with respect to not completing the study. Given this,
507 consideration should be given when working with individuals who are staying in a shelter on
508 how to best support therapy retention. Factors to increase retention should be examined during
509 the optimization phase of MOST, with a particular focus on those who are in the shelter or
510 sleeping rough.

511 Within subject differences showed a significant and clinically meaningful reduction in PTSD
512 symptoms in participants from baseline to week 12, suggesting that Narrative Exposure Therapy
513 may be effective in this population. Further research through a large scale RCT is needed to
514 determine the effect of genealogy and optimize the delivery of NET in this population.

515 *Strengths and limitations*

516 The major strength of this study is that we have shown that it is both feasible and acceptable to
517 conduct an RCT for the treatment of trauma with individuals experiencing homelessness in a
518 community setting – the first study of its kind. Additionally, the study also shows preliminary
519 evidence for NET as an effective therapy for complex trauma in the homeless. However, the
520 study is not without limitations. The major limitation of this study was a lack of individuals trained
521 in NET. As a pilot feasibility study, the trial is also underpowered to detect any significant
522 differences between treatment groups.

523 With respect to the genealogy report, it took approximately 4-6 weeks to receive a completed
524 report, which made it challenging to incorporate the findings of the report into the narrative
525 process. It would be possible in a large-scale trial to ensure that the individual is seen by the

526 genealogist in advance of initiating therapy to increase the likelihood of receiving the report
527 during active narration.

528 Lastly, due to the sudden lockdown measures implemented during the COVID-19 crisis the
529 study team was unable to complete the planned qualitative interviews about participant
530 experiences in the study, the therapy or genealogy support. Anecdotally, there were some
531 complaints about the complexity of two questionnaires (SF-20 and Health Care Costs
532 Questionnaire), but participants did not refuse to answer any questionnaires or comment on the
533 length of visits. With respect to the genealogist, participants all received their reports, with one
534 participant lost to follow-up requesting their report several months later. Only one participant, at
535 the time of consent, indicated that they would have no interest in speaking with a genealogist if
536 they were randomized to that arm.

537 *Clinical Considerations*

538 There is currently a significant gap in trauma treatment for the homeless community, despite the
539 high prevalence and degree of complexity within this population. This study has shown that not
540 only is it feasible to deliver community-based therapy without a fixed location, but that Narrative
541 Exposure Therapy is an effective and acceptable therapeutic option for individuals experiencing
542 complex trauma and homelessness. Additionally, service providers have emphatically endorsed
543 the need for this program after their participation in the study.

544 *Conclusions and Future Research*

545 This study was the first of three components of the preparation stage of a multiphase
546 optimization strategy (MOST). The second is a scoping review (46) which we have published
547 separately on the treatment of PTSD in the homeless including the use of trauma informed care
548 to deliver such therapy. The third is a consultation with key stakeholders, including individuals
549 with lived experience, about the implementation of a trauma informed care model for individuals

550 who are homeless or vulnerably housed. A focus of this consultation has been addressing the
551 issue of trust when referring potential participants to a treatment study. We will use these
552 components to develop a model of delivering NET in this population which we will optimize
553 using a factorial study in preparation for a larger multi-site RCT to evaluate the efficacy of NET
554 as well as genealogy support in this population. The multi-site RCT will also help to evaluate
555 issues of generalizability across communities that have different supports for their homeless
556 population.

557 ***List of Abbreviations***

558 NET – Narrative Exposure Therapy
559 RCT – Randomized Controlled Trial
560 PTSD – Post-Traumatic Stress Disorder
561 cPTSD – Complex Post-Traumatic Stress Disorder
562 MOST - Multi-phase Optimization Strategy
563 NET+G – Narrative Exposure Therapy Plus Genealogy
564 OHRI – Ottawa Hospital Research Institute

565

566 **Declarations**

567 ***Ethics***

568 Research ethics approval, including consent procedures, was provided by the Royal Ottawa's
569 Institute of Mental Health Research Ethics Board (IMHR-REB ID: 2017042) and the Ottawa
570 Health Sciences Network REB (OHSN-REB ID: 20180895-01H).

571 ***Consent for Publication***

572 Not applicable.

573 ***Availability of data and materials***

574 The datasets used and/or analyzed during the current study are available from the
575 corresponding author on reasonable request.

576 ***Competing Interests***

577 The authors declare that they have no competing interests.

578 ***Funding***

579 This work was supported by a grant from the Royal Ottawa Hospital's Institute for Mental Health
580 Research (ROH IMHR). The funders had no role in the review or approval of this manuscript for
581 publication.

582 **Author Contributions**

583 NEE was involved in protocol development, study conduct, data analysis and was a major
584 contributor in writing the manuscript. AB was involved in study conduct. NSD was involved in
585 study design, protocol development, and study conduct. SEM was involved in study design and
586 SH was involved in obtaining funding, study design, protocol development, conducting therapy
587 sessions, data analysis and interpretation, and was a major contributor in writing the
588 manuscript. All authors read and approved the final manuscript.

589 **Acknowledgements**

590 The study team would also like to recognize the following individuals for their contributions to
591 the project: Mags Gaulden (genealogist), Kim Bulger (therapist), research staff Brooklyn Ward,
592 and the service users who both participated and advised on the design and conduct of this
593 study. The study team would also like to thank the Royal Ottawa's Psychiatric Outreach
594 Program, Ottawa Inner City Health, Centre 454, and the Ottawa Salvation Army (Booth Street)
595 for their administrative support of the trial.

596

597 **References**

- 598 1. Canadian Observatory on Homelessness. How many people are homeless in Canada?
599 [Internet]. 2013 [cited 2021 Sep 21]. Available from: [https://www.homelesshub.ca/about-](https://www.homelesshub.ca/about-homelessness/homelessness-101/how-many-people-are-homeless-canada)
600 [homelessness/homelessness-101/how-many-people-are-homeless-canada](https://www.homelesshub.ca/about-homelessness/homelessness-101/how-many-people-are-homeless-canada)
- 601 2. Employment and Social Development Canada. Everyone Counts 2018: Highlights:
602 Preliminary results from the second nationally coordinated Point-in-Time count of
603 homelessness in Canadian communities [Internet]. 2018. Available from:
604 [https://www.canada.ca/content/dam/esdc-](https://www.canada.ca/content/dam/esdc-edsc/documents/programs/homelessness/reports/1981-Reaching_Home-PIT-EN_(3).pdf)
605 [edsc/documents/programs/homelessness/reports/1981-Reaching_Home-PIT-EN_\(3\).pdf](https://www.canada.ca/content/dam/esdc-edsc/documents/programs/homelessness/reports/1981-Reaching_Home-PIT-EN_(3).pdf)
- 606 3. Kingston Frontenac Lennox Addington United Way. Results of the Urban Kingston Point-
607 in-Time Count [Internet]. 2021. Available from: [https://www.unitedwaykfla.ca/wp-](https://www.unitedwaykfla.ca/wp-content/uploads/2021/09/2021-Kingston-PiT-Count-Results.pdf)
608 [content/uploads/2021/09/2021-Kingston-PiT-Count-Results.pdf](https://www.unitedwaykfla.ca/wp-content/uploads/2021/09/2021-Kingston-PiT-Count-Results.pdf)
- 609 4. Niagra Region Homelessness Services. Homelessness Point-in-Time Count Report -
610 Niagra Region. 2021.
- 611 5. US Department of Housing and Urban Development. The 2020 Annual Homeless
612 Assessment Report to Congress. Development. 2020;
- 613 6. Hwang SW. Homelessness and health. CMAJ. 2001.
- 614 7. Omerov P, Craftman ÅG, Mattsson E, Klarare A. Homeless persons' experiences of
615 health- and social care: A systematic integrative review. Health Soc Care Community
616 [Internet]. 2020 Jan 16 [cited 2021 Feb 8];28(1):1–11. Available from:
617 <https://onlinelibrary.wiley.com/doi/abs/10.1111/hsc.12857>
- 618 8. Hwang SW, Aubry T, Palepu A, Farrell S, Nisenbaum R, Hublely AM, et al. The health

- 619 and housing in transition study: A longitudinal study of the health of homeless and
620 vulnerably housed adults in three Canadian cities. *Int J Public Health*. 2011;
- 621 9. Purkey E, MacKenzie M. Experience of healthcare among the homeless and vulnerably
622 housed a qualitative study: Opportunities for equity-oriented health care. *Int J Equity*
623 *Health*. 2019;
- 624 10. Gilmer C, Buccieri K. Homeless Patients Associate Clinician Bias With Suboptimal Care
625 for Mental Illness, Addictions, and Chronic Pain. *J Prim Care Community Heal*. 2020;
- 626 11. Wen CK, Hudak PL, Hwang SW. Homeless people's perceptions of welcomeness and
627 unwelcomeness in healthcare encounters. *J Gen Intern Med*. 2007;
- 628 12. McInerney SJ, Fallahi A, Edgar NE, Ceniti AK, Rizvi SJ, Beder M, et al. Suicide-related
629 presentations of homeless individuals to an inner-city emergency department. *General*
630 *Hospital Psychiatry*. 2020.
- 631 13. Anderson I, Ytrehus S. Re-conceptualising approaches to meeting the health needs of
632 homeless people. *J Soc Policy*. 2012;
- 633 14. Buhrich N, Hodder T, Teesson M. Lifetime Prevalence of Trauma among Homeless
634 People in Sydney. *Aust New Zeal J Psychiatry* [Internet]. 2000 Dec 21 [cited 2020 Nov
635 8];34(6):963–6. Available from: <http://journals.sagepub.com/doi/10.1080/000486700270>
- 636 15. Keane CA, Magee CA, Kelly PJ. Is there Complex Trauma Experience typology for
637 Australian's experiencing extreme social disadvantage and low housing stability? *Child*
638 *Abus Negl*. 2016 Nov 1;61:43–54.
- 639 16. Taylor KM, Sharpe L. Trauma and post-traumatic stress disorder among homeless adults
640 in Sydney. *Aust N Z J Psychiatry* [Internet]. 2008 Mar 1 [cited 2020 Nov 8];42(3):206–13.
641 Available from: <http://journals.sagepub.com/doi/10.1080/00048670701827218>
- 642 17. Baggett TP, O'Connell JJ, Singer DE, Rigotti NA. The unmet health care needs of
643 homeless adults: A national study. *Am J Public Health* [Internet]. 2010 Jul 1 [cited 2020
644 Nov 8];100(7):1326–33. Available from:
645 <http://ajph.aphapublications.org/doi/10.2105/AJPH.2009.180109>
- 646 18. Carlson EB, Garvert DW, Macia KS, Ruzek JI, Burling TA. Traumatic Stressor Exposure
647 and Post-Traumatic Symptoms in Homeless Veterans. *Mil Med* [Internet]. 2013 Sep 1
648 [cited 2020 Nov 8];178(9):970–3. Available from:
649 <https://academic.oup.com/milmed/article/178/9/970-973/4259610>
- 650 19. Whitbeck LB, Armenta BE, Gentzler KC. Homelessness-Related Traumatic Events and
651 PTSD Among Women Experiencing Episodes of Homelessness in Three U.S. Cities. *J*
652 *Trauma Stress* [Internet]. 2015 Aug 1 [cited 2020 Nov 8];28(4):355–60. Available from:
653 <http://doi.wiley.com/10.1002/jts.22024>
- 654 20. Torchalla I, Strehlau V, Li K, Linden IA, Noel F, Krausz M. Posttraumatic stress disorder
655 and substance use disorder comorbidity in homeless adults: Prevalence, correlates, and
656 sex differences. *Psychol Addict Behav* [Internet]. 2014 [cited 2020 Nov 8];28(2):443–52.
657 Available from: /record/2013-27999-001
- 658 21. Van Ameringen M, Mancini C, Patterson B, Boyle MH. Post-traumatic stress disorder in
659 Canada. *CNS Neurosci Ther*. 2008 Sep;14(3):171–81.
- 660 22. Goodman L, Saxe L, Harvey M. Homelessness as psychological trauma: Broadening

- 661 perspectives. *Am Psychol*. 1991;
- 662 23. Hopper EK, Bassuk EL, Olivet J. Shelter from the storm: Trauma-informed care in
663 homelessness services settings. *Open Health Serv Policy J* [Internet]. 2009;2:131–51.
664 Available from: http://www.traumacenter.org/products/pdf_files/shelter_from_storm.pdf
- 665 24. World Health Organization. International Classification of Diseases for Mortality and
666 Morbidity Statistics Eleventh Edition. World Health Organization. 2021.
- 667 25. Armstrong R, Phillips L, Alkemade N, Louise O'Donnell M. Using latent class analysis to
668 support the ICD-11 complex posttraumatic stress disorder diagnosis in a sample of
669 homeless adults. *J Trauma Stress*. 2020 Oct 1;33(5):677–87.
- 670 26. Møller L, Augsburger M, Elklit A, Søgaaard U, Simonsen E. Traumatic experiences, ICD-
671 11 PTSD, ICD-11 complex PTSD, and the overlap with ICD-10 diagnoses. *Acta Psychiatr*
672 *Scand*. 2020;
- 673 27. Magwood O, Leki VY, Kpade V, Saad A, Alkhateeb Q, Gebremeskel A, et al. Common
674 trust and personal safety issues: A systematic review on the acceptability of health and
675 social interventions for persons with lived experience of homelessness. *PLoS One*. 2019
676 Dec 1;14(12):e0226306.
- 677 28. Hwang SW, Ueng JJM, Chiu S, Kiss A, Tolomiczenko G, Cowan L, et al. Universal health
678 insurance and health care access for homeless persons. *Am J Public Health*. 2010;
- 679 29. Schauer M, Elbert T, Neuner F. Narrative exposure therapy : A short-term treatment for
680 traumatic stress disorders. Hogrefe; 2011. 110 p.
- 681 30. American Psychological Association. Clinical Practice Guideline for the Treatment of
682 Posttraumatic Stress Disorder (PTSD). Washington, DC APA, Guidel Dev Panel Treat
683 Posttraumatic Stress Disord Adults. 2017;
- 684 31. NICE. Post-traumatic stress disorder: NICE guideline. NICE Guidance. 2018.
- 685 32. Crombach A, Elbert T. Controlling Offensive Behavior Using Narrative Exposure Therapy:
686 A Randomized Controlled Trial of Former Street Children. *Clin Psychol Sci*. 2015;
- 687 33. Mørkved N, Hartmann K, Aarsheim LM, Holen D, Milde AM, Bomyea J, et al. A
688 comparison of narrative exposure therapy and prolonged exposure therapy for PTSD.
689 *Clinical Psychology Review*. 2014.
- 690 34. Bowen P, Rose R, Pilkington2 A. Mixed Methods-Theory and practise.Sequential,
691 explanatory approach. *International Journal of Quantitative and Qualitative Research*
692 *Methods*. 2017.
- 693 35. Goodman RD. The transgenerational trauma and resilience genogram. *Couns Psychol Q*
694 [Internet]. 2013 Dec [cited 2021 Mar 3];26(3–4):386–405. Available from:
695 <https://www.tandfonline.com/doi/abs/10.1080/09515070.2013.820172>
- 696 36. Mitchell MD, Shillingford MA. A Journey to the Past. *Fam J* [Internet]. 2017 Jan 21 [cited
697 2021 Mar 3];25(1):63–9. Available from:
698 <http://journals.sagepub.com/doi/10.1177/1066480716679656>
- 699 37. Mahuika N, Kukutai T. Introduction: Indigenous Perspectives on Genealogical Research.
700 *Genealogy*. 2021;
- 701 38. Hatcher S, Coupe N, Wikiriwhi K, Durie SM, Pillai A. Te Ira Tangata: a Zelen randomised

- 702 controlled trial of a culturally informed treatment compared to treatment as usual in Māori
703 who present to hospital after self-harm. *Soc Psychiatry Psychiatr Epidemiol*. 2016;
- 704 39. Eldridge SM, Chan CL, Campbell MJ, Bond CM, Hopewell S, Thabane L, et al.
705 CONSORT 2010 statement: Extension to randomised pilot and feasibility trials. *Pilot*
706 *Feasibility Stud*. 2016;
- 707 40. Zanis DA, McLellan AT, Cnaan RA, Randall M. Reliability and validity of the Addiction
708 Severity Index with a homeless sample. *J Subst Abuse Treat* [Internet]. [cited 2019 Aug
709 23];11(6):541–8. Available from: <http://www.ncbi.nlm.nih.gov/pubmed/7884837>
- 710 41. Julious SA. Sample size of 12 per group rule of thumb for a pilot study. *Pharm Stat*.
711 2005;4(4):287–91.
- 712 42. National Center for PTSD. Using the PTSD Checklist for DSM-5 (PCL-5) [Internet]. [cited
713 2021 Sep 21]. Available from:
714 <https://www.ptsd.va.gov/professional/assessment/documents/using-PCL5.pdf>
- 715 43. Barrett MS, Chua WJ, Crits-Christoph P, Gibbons MB, Thompson D. EARLY
716 WITHDRAWAL FROM MENTAL HEALTH TREATMENT: IMPLICATIONS FOR
717 PSYCHOTHERAPY PRACTICE. *Psychotherapy*. 2008.
- 718 44. Swift JK, Greenberg RP. Premature discontinuation in adult psychotherapy: A meta-
719 analysis. *J Consult Clin Psychol*. 2012;
- 720 45. Voith LA, Hamler T, Francis MW, Lee H, Korsch-Williams A. Using a trauma-informed,
721 socially just research framework with marginalized populations: Practices and barriers to
722 implementation. *Soc Work Res*. 2020;
- 723 46. Bennett A, Crosse K, Ku M, Edgar N, Hodgson A, Hatcher S. Interventions to treat post-
724 traumatic stress disorder (PTSD) in vulnerably housed populations and trauma-informed
725 care: A scoping review. *medRxiv*. 2021;
- 726