

# **A Cloth Facemask Causes No Major Respiratory or Cardiovascular Perturbations during Moderate to Heavy Exercise**

Natália Mendes Guardieiro<sup>1,2</sup>, Gabriel Barreto<sup>1</sup>, Felipe Miguel Marticorena<sup>1</sup>, Tamires Nunes Oliveira<sup>1</sup>, Luana Farias de Oliveira<sup>1</sup>, Ana Lucia de Sá Pinto<sup>2,3</sup>, Danilo Marcelo Leite do Prado<sup>1</sup>, Bryan Saunders<sup>\*1,4</sup>, Bruno Gualano<sup>\*1,3,5</sup>

\*both authors equally contributed to this study

1 – Applied Physiology and Nutrition Research Group, School of Physical Education and Sport; Rheumatology Division; Faculdade de Medicina FMUSP, Universidade de São Paulo, São Paulo, SP, BR, University of São Paulo, SP, Brazil.

2 – Hospital das Clínicas da Faculdade de Medicina da Universidade de São Paulo

3 - Laboratory of Assessment and Conditioning in Rheumatology (LACRE), Rheumatology Division, Universidade de São Paulo, São Paulo, Brazil

4 – Institute of Orthopaedics and Traumatology, Faculty of Medicine FMUSP, University of São Paulo, Brazil.

5 – Food Research Center, University of São Paulo, São Paulo, Brazil.

Correspondence:

Dr Bruno Gualano - Applied Physiology & Nutrition Research Group, Rheumatology Division, Faculty of Medicine FMUSP

Av. Dr. Arnaldo, 455 - Cerqueira César - CEP: 01246903 - University of São Paulo, São Paulo, SP, Brazil. Phone: +55 11 3061-8789

E-mail: [gualano@usp.br](mailto:gualano@usp.br)

## 26 Abstract

27 **Objectives:** To investigate whether wearing a cloth facemask could affect physiological and  
28 perceptual responses to exercise at distinct exercise intensities in non-trained men and  
29 women.

30 **Methods:** In a crossover design, participants (17 men and 18 women) underwent a  
31 progressive square-wave test at four intensities (i. at 80% of the ventilatory anaerobic  
32 threshold [80%VAT]; ii. at VAT; iii. at the respiratory compensation point [RCP]; iv. at  
33 exercise peak [Peak] to exhaustion), with or without a triple-layered cloth mask (Mask or No-  
34 Mask). Several physiological, metabolic and perceptual measures were analyzed.

35 **Results:** Mask reduced inspiratory capacity at all exercise intensities vs. No-Mask  
36 ( $p < 0.0001$ ), irrespective of sex. Mask reduced respiratory frequency vs. No-Mask ( $p = 0.001$ )  
37 at Peak ( $-8.3 \text{ breaths} \cdot \text{min}^{-1}$ ; CI:  $-5.8, -10.8$ ), RCP ( $-6.9 \text{ breaths} \cdot \text{min}^{-1}$ ; CI:  $-4.6, -9.2$ ) and VAT  
38 ( $-6.5 \text{ breaths} \cdot \text{min}^{-1}$ ; CI:  $-4.1, -8.8$ ), but not at Baseline or at 80%VAT. Mask also reduced  
39 tidal volume ( $p < 0.0001$ ) at both RCP ( $-0.5 \text{ L}$ ; CI:  $-0.3, -0.6$ ) and Peak ( $-0.8 \text{ L}$ ; CI:  $-0.6, -0.9$ ),  
40 but not at Baseline, 80%VAT or VAT. Shallow breathing index was increased with Mask at  
41 Peak compared to No-Mask ( $11.3$ ; CI:  $7.5, 15.1$ ), but not at any other intensities. Mask did  
42 not change heart rate, lactate, ratings of perceived exertion, blood pressure or oxygen  
43 saturation.

44 **Conclusions:** Wearing a cloth facemask during exercise at moderate to heavy intensities is  
45 unlikely to incur significant respiratory or cardiovascular changes, irrespective of sex. These  
46 data can inform new exercise recommendations for health during the COVID-19 pandemic  
47 and debunk unfounded allegations of harmful effects of masks during exercise.  
48 ClinicalTrials.gov: NCT04887714

49

50 **Key-words:** physical activity; mask; COVID-19 pandemic; oxygen saturation; lactate.

51 **What are the new findings?**

- 52 ✓ Using a progressive square-wave test, we showed that wearing a cloth facemask
- 53 during exercise increased breathing difficulty, but this was dependent upon the
- 54 exercise intensity.
- 55 ✓ Respiratory variables (e.g., inspiratory capacity, respiratory frequency, shallow
- 56 breathing index) were affected at higher rather than lower intensities.
- 57 ✓ Mask wearing did not change heart rate, lactate, ratings of perceived exertion, blood
- 58 pressure or oxygen saturation at any exercise intensity.
- 59 ✓ There were no substantial sex differences on the effects of mask wearing during
- 60 exercise.

61

62 **How might it impact on clinical practice in the future?**

- 63 ✓ These data can debunk unfounded allegations on harmful effects of masks during
- 64 exercise, and help inform new exercise recommendations for health during the
- 65 COVID-19 pandemic, particularly where facemasks remain necessary.

## 66 Introduction

67 The use of face masks is one of the most effective non-pharmacological strategy to prevent  
 68 SARS-CoV-2 infections [1, 2]. The recent resurgence of cases and deaths worldwide has led  
 69 to some decision-makers to re-issue mask orders to contain the disease, suggesting that this  
 70 safety tool will remain important as long as the pandemic is not fully mitigated [3], and  
 71 possibly after it is under control, as in several cultures employing facemasks as a routine  
 72 practice to protect against several health threats before COVID-19 outbreak [4]. Wearing a  
 73 facemask is recommended even during exercise, particularly at indoor fitness facilities and  
 74 gyms, where COVID-19 outbreaks have been reported [5]. Nevertheless, the physiological  
 75 impact of facemasks during exercise remains underexplored.

76  
 77 A facemask may reduce the ability to breathe comfortably during exercise, which has been  
 78 confirmed by some [6, 7], but not all [8] studies. It is possible to conjecture that the effects of  
 79 wearing a mask on cardiorespiratory responses may manifest during exhaustive high-intensity  
 80 exercise, but not (or less) during low- to moderate-intensity exercise. In fact, Driver et al. [6]  
 81 provide preliminary evidence that the effect of facemasks is dependent on exercise intensity,  
 82 with differences in oxygen saturation, ratings of perceived exertion (RPE) and dyspnoea  
 83 occurring at different stages of an incremental cardiopulmonary test as exercise intensity  
 84 increased. However, short-stage maximal incremental tests do not normalize the  
 85 physiological responses to exercise in relation to the gas exchange or blood acid-base profiles  
 86 [9 10], since  $\%VO_{2max}$  at the ventilatory thresholds largely varies between individuals [9],  
 87 hampering accurate determination of exercise intensities and ultimately confounding data  
 88 interpretation [10, 11]. To overcome this limitation, constant-load tests based on the dynamic  
 89 behaviour of the pulmonary gas exchange and blood acid-base status have been  
 90 recommended to accurately determine exercise intensity domains (i.e., moderate, heavy,

91 severe, and extreme) [10]. This approach allows determination of whether facemasks affect  
 92 physiological and perceptual parameters at different, well-defined exercise intensities,  
 93 helping tailor exercise prescription for health that can minimize any negative effects of  
 94 wearing a mask on cardiorespiratory responses.

95

96 Another remaining question is whether women and men respond differently to mask wearing  
 97 during exercise. Generally, women have smaller lungs and airways, which limits their ability  
 98 to generate expiratory flow [12, 13], which results in reduced ventilation during exercise  
 99 compared to men. Women also have lower oxygen (O<sub>2</sub>) carrying capacity, maximum cardiac  
 100 output, and arteriovenous O<sub>2</sub> difference [14]. Considering the number of physiological and  
 101 morphological sex differences to exercise, one could speculate that any physiological  
 102 perturbations brought about wearing a mask during exercise could be greater in women, since  
 103 men have an overall higher cardiorespiratory reserve.

104

105 This study aimed to investigate whether wearing a cloth facemask could affect physiological  
 106 and perceptual responses to exercise at distinct exercise intensities in non-trained individuals.  
 107 A secondary aim was to test whether sex differences influenced these responses.

## Methods

### *Ethics statement*

The protocol was approved by the institutional ethics committee. Written informed consent was obtained before participants' enrollment.

### *Study design and setting*

This was a crossover study (clinicaltrials.gov: NCT04887714) performed at an intrahospital, exercise physiology laboratory in São Paulo, Brazil. Data collection took place between April and November 2021.

### *Participants*

Men and women not engaged in competitive sports (*i.e.*, non-trained) were eligible for this study. Exclusion criteria included any cardiac, pulmonary, and rheumatologic diseases, musculoskeletal limitations, and BMI <18.5 or >30 kg·m<sup>2</sup>. A total of 18 men and 20 women entered the study, although 3 dropped out for reasons unrelated to the study. Thirty-five individuals (17 men and 18 women) completed all main sessions (age: women: 28±5 y, men: 30±4 y; BMI: women: 22.9±2.0 kg·m<sup>2</sup>, men: 24.5±2.6 kg·m<sup>2</sup>) and were analyzed. According to the short form of the International Physical Activity Questionnaire (IPAQ) instrument [15], 31 participants were physically active, whereas 4 were inactive.

### *Experimental design*

Participants attended the laboratory on three separate occasions, separated by a minimum of 48 h, at the same time of day to account for circadian variation [16]. The first visit consisted of an incremental cardiopulmonary running test to exhaustion to determine peak oxygen uptake ( $\dot{V}\text{O}_{2\text{peak}}$ ) and ventilatory thresholds. The remaining two main visits consisted of a

running progressive square-wave test (PSWT), performed with or without the use of a triple-layered cloth facemask (Fashion Masks, São Paulo, Brazil). This facemask was chosen because it is widely accessible, recommended to the general public by the WHO and appropriate for exercise (<https://www.cdc.gov/coronavirus/2019-ncov/prevent-getting-sick/cloth-face-cover-guidance.html>). The outer layer was waterproof polyester fabric, the middle layer a polypropylene filter, and the inner layer was absorbable cotton. The size was “one size fits all” and was thus identical for all participants. Athletes were required to keep the mask firmly in place over the nose, mouth, and chin during the entire session. The order of sessions was determined by an individual not involved in data collection. Blocks of two individuals were allocated to the two possible orders (Mask–No Mask; No Mask–Mask) using a random number generator (<https://www.randomizer.org/>) to ensure the study was counterbalanced. Since the investigators could see that the participants were wearing a cloth facemask or not, the session order was provided directly to the research team. All participants were habituated to wear a mask during their daily routines due to mandates, but not specifically during exercise. Participants were requested to refrain from strenuous exercise, caffeine and alcohol, and replicated their diet, in the 24 h prior to each visit.

### *Cardiorespiratory Exercise Test*

Immediately prior to the cardiorespiratory exercise test, participants performed a pulmonary function test according to recommendations [17]. The cardiorespiratory exercise test was performed on a motorized treadmill (Centurion 300, Micromed, Brazil). For men, the test started at 5 km·h<sup>-1</sup> and increased speed (1 km·h<sup>-1</sup>·min<sup>-1</sup>) up to a maximum velocity of 14 km·h<sup>-1</sup>. For women, the test started at 4 km·h<sup>-1</sup> and increased speed (1 km·h<sup>-1</sup>·min<sup>-1</sup>) up to 13 km·h<sup>-1</sup>. For those participants who reached these maximal speeds, there was a subsequent increase in inclination (2%·min<sup>-1</sup>) until exhaustion. Ventilatory and gas exchange

measurements were recorded continuously throughout the test using a breath-by-breath system (MetaLyzer 3B, Cortex, Germany), as was heart rate (HR; ergo PC elite, Micromed, Brazil). Maximal effort was determined according to published criteria [18] and individual  $\dot{V}\text{O}_{2\text{peak}}$  was determined as the  $\dot{V}\text{O}_2$  averaged over the final 30 s.

### *Progressive square-wave test (PSWT)*

Data from the cardiorespiratory exercise test was used to determine exercise workload for the square wave treadmill test according to the ventilatory anaerobic threshold (VAT) and the respiratory compensation point (RCP). All thresholds were determined by the same respiratory physiologist with clinical experience in the area. The PSWT protocol was performed on a motorized treadmill (Centurion, model 200, Micromed, Brazil) and consisted of three 5-min stages at workloads equivalent to 1) 80%VAT, 2) VAT, and 3) RCP. These stages represented moderate, heavy and severe domains [10] and corresponded to  $41\pm 9\%$ ,  $53\pm 9\%$  and  $81\pm 8\%$  of  $\dot{V}\text{O}_{2\text{peak}}$  of the volunteers. Participants then completed a final stage to exhaustion at a running speed equivalent to the maximum achieved during the cardiorespiratory exercise test (Peak). Ventilatory and gas exchange measurements were recorded continuously throughout, with the spirometer mask placed over the cloth facemask.

To determine the effect of the mask on pattern of change in operating lung volumes we evaluated end-expiratory volume to functional vital capacity ratio (EELV/FVC). Inspiratory capacity was determined at rest and at the end of each exercise stage during the PSWT. Ventilatory constraint was evaluated as the difference between inspiratory capacity at rest and at each exercise workload [19]. Ventilatory efficiency was determined using the ventilatory equivalent for carbon dioxide ( $\dot{V}_E/\dot{V}\text{CO}_2$ ) and end-tidal carbon dioxide pressure ( $\text{PetCO}_2$ )



during each stage. Breathing pattern was evaluated during each stage using the breathing frequency to tidal volume ratio (BF/TV) ratio [20].

RPE were assessed at the end of each stage with participants pointing to a chart using the 6- to 20-point Borg scale [21]. Heart rate was monitored continuously throughout (ergo PC elite, Micromed, Brazil). A fingertip blood sample (20  $\mu$ L) was collected at baseline, at the end of each stage and 4-min post-exhaustion for the subsequent analysis of lactate. Blood was homogenized in the same volume of 2% NaF, centrifuged at 2000 g for 5 min before plasma was removed and stored at -20°C until analysis. Plasma lactate was determined spectrophotometrically using an enzymatic-colorimetric method (Katal, Interteck, Brazil).

#### *Subjective Perception of Discomfort Questionnaire*

Participants completed a questionnaire [22] following the completion of the PSWT to rate their perception of ten sensations of discomfort related to the facemask: humidity, heat, breathing resistance, itchiness, tightness, saltiness, feeling unfit, odor and fatigue. They were also required to rate their overall feeling of discomfort related to the facemask on a scale from 0 to 10, with 0–3 representing “Comfortable”, >3–7 representing “Uncomfortable” and >7 representing “Extremely uncomfortable”.

#### *Statistical analyses*

Lactate data from 2 individuals (1 male, 1 female) who did not complete the third stage were excluded from the RCP and Peak analyses. Furthermore, 1 male and 1 female reported extreme discomfort with the PSWT mask and stopped exercising before volitional exhaustion; and were excluded from the Peak analysis for all outcomes. The same 4 individuals were excluded from the TTE analysis. Lactate data were log<sub>10</sub> transformed

before mixed model analysis, turning the model into an exponential data mixed model, and back transformed through exponentiation for the final reporting of data. Whenever outlying data points were considered improbable (e.g., a value of 50 mmHg for systolic blood pressure), they were considered measurement or transcription error and were excluded.

Repeated measures Mixed Model ANOVAs were performed with condition (Mask, No-Mask), sex and exercise intensity (Baseline [except RPE], 80%VAT, VAT, RCP, Peak) as fixed factors and individuals as random factors. Exceptions were Spirometry, TTE and Questionnaire related outcomes, which were not repeated measures and, therefore, timing was not included as a fixed factor. For TTE, the model was corrected by treatment order, since participants were not familiarized to the protocol. When a significant main effect or interaction was detected (accepted at  $p \leq 0.05$ ), post-hoc pairwise comparisons were performed with Tukey's adjustment. All analyses were performed with the RStudio software (Rstudio 1.4.11003, PBC, MA) using the "lmer" function of the lmerTest package and "emmeans" function of the emmeans package. Data are expressed as estimated differences and 95% confidence intervals (CI), and data in figures are represented as mean  $\pm$  1 standard deviation.

#### *Patient and Public Involvement statement*

Participants were not involved in the design or in performing the study.

## 226 Results

### 227 *Cardiorespiratory Exercise Test*

228 Participants' characteristics and respiratory data at the ventilatory thresholds and calculated  
229 stages are presented in Table 1.

230

231 **Table 1.** Participants' characteristics and cardiorespiratory data from the cardiopulmonary exercise test.

232 VE/MVV: minute ventilation/maximum voluntary ventilation ratio.

	Women	Men
	Mean $\pm$ SD	Mean $\pm$ SD
<b>Age (years)</b>	28 $\pm$ 5	30 $\pm$ 4
<b>Weight (kg)</b>	60.9 $\pm$ 9.0	73.96 $\pm$ 8.1
<b>Height (m)</b>	1.63 $\pm$ 0.07	1.74 $\pm$ 0.07
<b><u>80% VAT</u></b>		
<b>Heart rate (bpm)</b>	115 $\pm$ 12	109 $\pm$ 20
<b>Respiratory exchange ratio</b>	0.79 $\pm$ 0.11	0.83 $\pm$ 0.07
<b>Minute ventilation (L/min)</b>	25.4 $\pm$ 5.5	34.4 $\pm$ 10.7
<b>VO<sub>2</sub> absolute (L/min)</b>	1.01 $\pm$ 0.19	1.43 $\pm$ 0.4
<b>VO<sub>2</sub> relative (ml/kg/min)</b>	16.2 $\pm$ 3.2	19.4 $\pm$ 6
<b>VO<sub>2</sub> %peak (%)</b>	42.1 $\pm$ 7.9	39.8 $\pm$ 10.5
<b><u>VAT</u></b>		
<b>Heart rate (bpm)</b>	128 $\pm$ 13	122 $\pm$ 17
<b>Respiratory exchange ratio</b>	0.85 $\pm$ 0.09	0.89 $\pm$ 0.06
<b>Minute ventilation (L/min)</b>	32.6 $\pm$ 6.4	44.7 $\pm$ 10.2
<b>VO<sub>2</sub> absolute (L/min)</b>	1.25 $\pm$ 0.21	1.83 $\pm$ 0.35
<b>VO<sub>2</sub> relative (ml/kg/min)</b>	20.7 $\pm$ 3.5	24.9 $\pm$ 5.5
<b>VO<sub>2</sub> %peak (%)</b>	53.6 $\pm$ 7.5	51.4 $\pm$ 9.8
<b><u>RCP</u></b>		
<b>Heart rate (bpm)</b>	168 $\pm$ 9	161 $\pm$ 10
<b>Respiratory exchange ratio</b>	1.02 $\pm$ 0.05	1.04 $\pm$ 0.05

<b>Minute ventilation (L/min)</b>	64.3 ± 10.9	83.5 ± 14.8
<b>VO<sub>2</sub> absolute (L/min)</b>	2 ± 0.24	2.75 ± 0.35
<b>VO<sub>2</sub> relative (ml/kg/min)</b>	33.1 ± 3.6	37.2 ± 4.9
<b>VO<sub>2</sub> %peak (%)</b>	86.1 ± 8.4	77.0 ± 8.0

### **Peak**

<b>Heart rate (bpm)</b>	183 ± 6	183 ± 6
<b>Respiratory exchange ratio</b>	1.18 ± 0.06	1.22 ± 0.07
<b>Minute ventilation (L/min)</b>	95.3 ± 15.3	139.4 ± 25.1
<b>VE/MVV</b>	0.73 ± 0.13	0.77 ± 0.16
<b>VO<sub>2</sub> absolute (L/min)</b>	2.33 ± 0.26	3.59 ± 0.45
<b>VO<sub>2</sub> relative (ml/kg/min)</b>	38.7 ± 4.6	48.6 ± 6.3

233

### 234 Progressive square-wave test (PSWT)

#### 235 *Inspiratory capacity (IC)*

236 Mask reduced IC at all exercise intensities (interaction effect condition\*timing: F=8.6,  
237 p<0.0001, Figure 1, Panel A) compared to No-Mask irrespective of sex (80% VAT: -0.4 L;  
238 CI: -0.2, -0.6; VAT: -0.5 L; CI: -0.4, -0.7; RCP: -0.7 L; CI: -0.5, -0.9; Peak: -1.0 L; CI: -0.8, -  
239 1.2), except at Baseline (-0.2 L; CI: 0.0, -0.4).

240

#### 241 *End expiratory lung volume (EELV) and EELV/Forced Vital capacity (EELV/FVC)*

242 Mask did not influence EELV or EELV/FVC, irrespective of exercise intensities and sex (all  
243 p≥0.1, Figure 1, Panel B and C).

244

#### 245 *Respiratory Frequency (Rf)*

246 Mask reduced Rf vs. No-Mask (interaction effect of condition\*timing: F=4.6, p=0.001,  
247 Figure 1, Panel D) at Peak (-8.3 breaths·min<sup>-1</sup>; CI: -5.8, -10.8), RCP (-6.9 breaths·min<sup>-1</sup>; CI: -  
248 4.6, -9.2) and VAT (-6.5 breaths·min<sup>-1</sup>; CI: -4.1, -8.8), but not at Baseline or at 80% VAT

(both  $p \geq 0.06$ ). Rf was reduced similarly in men ( $-7.5 \text{ breaths} \cdot \text{min}^{-1}$ ; CI:  $-6.0, -9.0$ ) and women ( $-3.4 \text{ breaths} \cdot \text{min}^{-1}$ ; CI:  $-1.9, -4.9$ ) with Mask (Figure 1, Panel D).

#### *Tidal Volume (VT)*

Mask reduced VT (interaction effect of condition\*intensity,  $F=18.3$ ,  $p<0.0001$ , Figure 1, Panel E) at both RCP ( $-0.5\text{L}$ ; CI:  $-0.3, -0.6$ ) and Peak ( $-0.8\text{L}$ ; CI:  $-0.6, -0.9$ ), but not at Baseline, 80% VAT or VAT (all  $p \geq 0.97$ ). Sex had no influence on the effects of Mask on VT ( $p=0.053$ ).

#### *Tobin index (Rf/VT or shallow breathing index)*

Mask increased the Tobin index at Peak compared to No-Mask ( $+11.3$ ; CI:  $7.5, 15.1$ ), but not at any other intensity (all  $p \geq 0.4$ , interaction effect of condition\*intensity:  $F=7.3$ ,  $p<0.0001$ ). Rf/VT in men was not affected by Mask, whereas it was increased in Mask vs. No-Mask for women (interaction effect of condition\*sex:  $F=25.1$ ,  $p<0.0001$ ; men:  $+1.1$ ; CI:  $-1.1, 3.3$ ; women:  $+6.9$ ; CI:  $4.7, 9.1$ ; Figure 1, Panel F).

#### *PetCO<sub>2</sub>*

Mask increased PetCO<sub>2</sub> at both RCP ( $+4.0 \text{ mmHg}$ ; CI:  $2.8, 5.3$ , Figure 1, Panel G) and Peak ( $+4.9 \text{ mmHg}$ ; CI:  $3.5, 6.3$ ) compared to No-Mask (interaction effect condition\*intensity:  $F=6.8$ ,  $p<0.0001$ ), but had no effect at Baseline, 80% VAT or VAT (all  $p \geq 0.09$ ). The effect of Mask on PetCO<sub>2</sub> increases was comparable in men ( $+3.4 \text{ mmHg}$ ; CI:  $2.5, 4.2$ ) and women ( $+1.9 \text{ mmHg}$ ; CI:  $1.1, 2.7$ ).

#### *$V_E/V_{CO_2}$*

Mask reduced VE/VCO<sub>2</sub> at the three highest intensities compared to No-Mask (interaction effect of condition\*intensity, F=3.7, p=0.006): VAT (-2.2; CI: -0.9, -3.5), RCP (-3.2; CI: -1.9, -4.5), and Peak (-4.4; CI: -3.0, -5.8) (Figure 1, Panel H), irrespective of sex.

#### *Heart rate during exercise (HR)*

No effects of Mask at any exercise intensity were seen for HR. Despite an interaction effect of condition\*sex for HR (F=4.6, p=0.03), post-hoc comparisons did not show any significant differences (all p≥0.4). (Figure 2, Panel A).

#### *Lactate*

Mask did not affect lactate measures at any exercise intensities, irrespective of sex (Figure 2, Panel B).

#### *Ratings of Perceived Exertion (RPE)*

Mask did not influence RPE at any exercise intensity. However, Mask increased RPE for men, but not women (interaction effect of condition\*sex, F=6.2, p=0.01, men: +1.4; CI: 0.9, 2.0; women: +0.4; CI: -0.1, 1.0; Figure 2, Panel C).

#### *Blood pressure*

Mask did not affect both systolic or diastolic blood pressure at any exercise intensity (Figure 2, Panel D and E), regardless of sex.

#### *Oxygen saturation (SatO<sub>2</sub>)*

Mask did not affect SatO<sub>2</sub> at any exercise intensity (Figure 2, Panel F), regardless of sex.

298 *Time-to-exhaustion (TTE)*

299 Mask reduced TTE compared to No-Mask (-34.5 s; CI: -17.0, -52.1; main effect of condition:  
300 F=14.9, p=0.0007, Figure 3), with no condition\*sex interaction.

301

302 *Forced Vital Capacity at rest (FVC)*

303 Mask reduced FVC compared to No-Mask (-1.8L; CI: -1.1, -1.5; condition: F=117.7,  
304 p<0.0001), with no condition\*sex interaction (Table 2).

305

306 *Forced expiratory volume in 1 second at rest (FEV1)*

307 Mask reduced FEV1 compared to No-Mask (-1.2; CI: -1.0, -1.4; main effect of condition:  
308 F=156.2, p<0.0001), with no condition\*sex interaction (Table 2).

309

310 *FVC/FEV1 at rest (FVC by FEV1 ratio)*

311 Mask did not influence the FVC/FEV1 ratio, irrespective of sex (Table 2).

312

313 *Peak expiratory flow at rest (PEF)*

314 Mask reduced PEF compared to No-Mask (-3.4; CI: -2.8, -4.0, main effect of condition:  
315 F=122.1, p<0.0001), independently of sex (Table 2).

316

317 *Subjective perception questionnaire*

318 Mask increased the subjective feelings of Heat, Misfitting, Discomfort, Fatigue, Resistance,  
319 Saltiness and Humidity (all p≤0.01), but did not affect feelings of Saltiness, Tightness or  
320 Itchiness (all p≥0.1). No interaction between condition and sex was detected (Table 2).

**Table 2.** Spirometry at rest and subjective questionnaire outcomes.

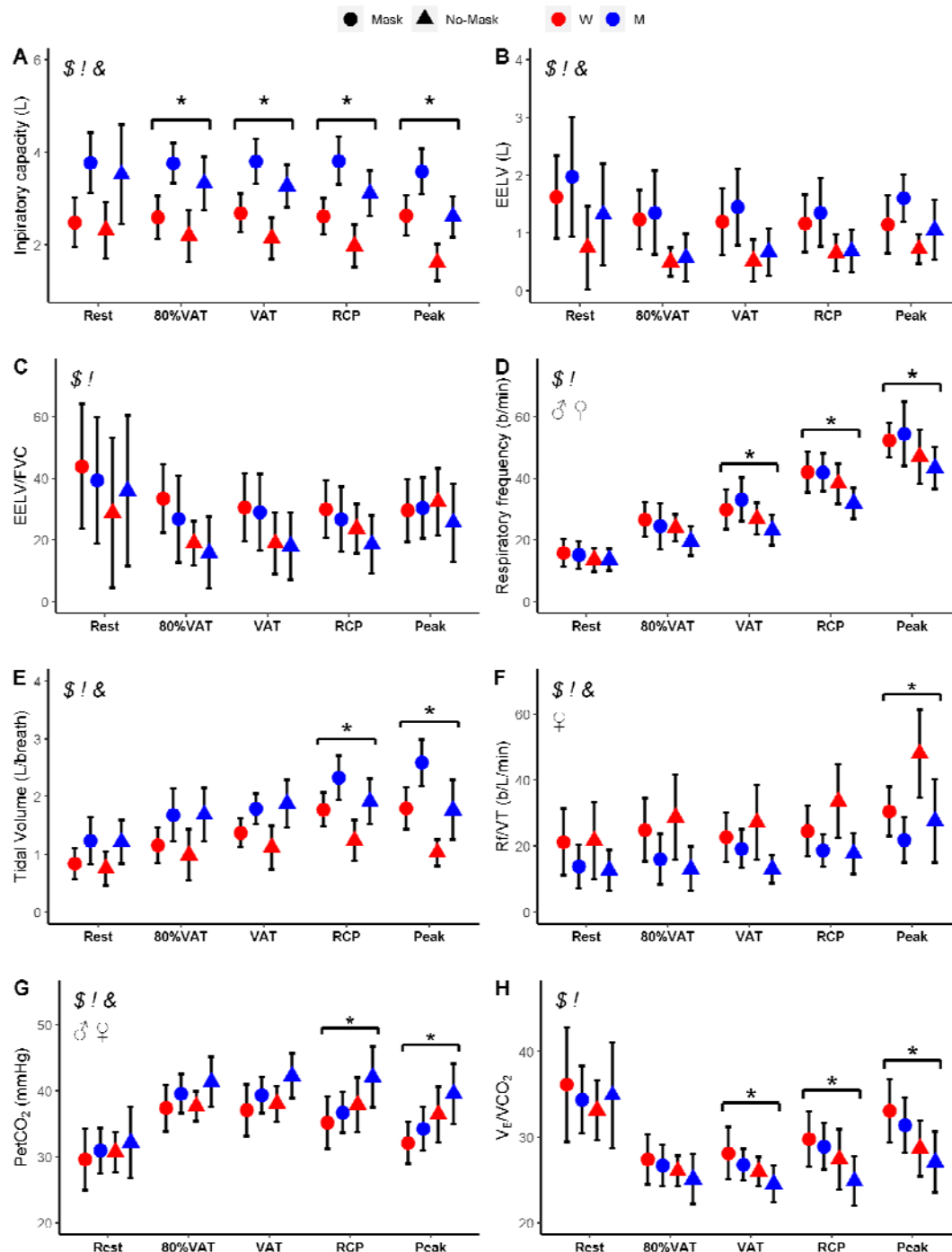
	<b>Women</b>		<b>Men</b>	
	<b>No-Mask</b>	<b>Mask</b>	<b>No-Mask</b>	<b>Mask</b>
	<b>Mean ± SD</b>	<b>Mean ± SD</b>	<b>Mean ± SD</b>	<b>Mean ± SD</b>
<b><u>Spirometry</u></b>				
<b>FEV1 (L)<sup>\$!</sup></b>	3.4 ± 0.4	2.3 ± 0.5	4.5 ± 0.5	3.2 ± 0.6
<b>FVC (L)<sup>\$!</sup></b>	3.8 ± 0.6	2.6 ± 0.6	5 ± 0.7	3.7 ± 0.7
<b>FVC/FEV1(%)</b>	90.7 ± 7.7	90.5 ± 7.2	90.8 ± 6.7	87.3 ± 8.4
<b>PEF (L/s)<sup>\$!</sup></b>	7.7 ± 1.8	4.4 ± 1.1	9.2 ± 1.9	5.7 ± 1.6
<b><u>Questionnaire</u></b>				
<b>Tightness</b>	3.4 ± 2.4	4.2 ± 3.4	2.5 ± 2.2	3.4 ± 2.5
<b>Heat<sup>\$</sup></b>	3.6 ± 2.1	6.2 ± 2.5	3.3 ± 2.2	5.9 ± 2.3
<b>Itchiness</b>	0.8 ± 1.1	1.1 ± 2.2	1.6 ± 2.7	2.8 ± 3.1
<b>Misfitting<sup>\$</sup></b>	1.8 ± 2.3	2.6 ± 2.5	1.6 ± 2.1	4.1 ± 2.7
<b>Discomfort<sup>\$</sup></b>	4.5 ± 1.4	7.9 ± 2.3	4.2 ± 2.9	7.1 ± 2.6
<b>Fatigue<sup>\$</sup></b>	5.2 ± 3.1	8.2 ± 1.8	5.0 ± 2.6	8.6 ± 2.4
<b>Odour</b>	1.2 ± 2.4	0.9 ± 1.8	0.9 ± 1.3	1.7 ± 2.4
<b>Resistance<sup>\$</sup></b>	3.4 ± 2.3	8.6 ± 1.2	4.0 ± 2.8	8.4 ± 1.3
<b>Saltiness<sup>\$!</sup></b>	0.3 ± 0.5	0.7 ± 1.6	1.0 ± 1.8	2.7 ± 3.5
<b>Humidity<sup>\$</sup></b>	3.7 ± 2.6	5.3 ± 2.3	4.1 ± 1.9	6.6 ± 2.4

FEV1, forced expiratory volume in 1 second; FVC, forced vital capacity; FVCbyFEV1,

forced vital capacity by FEV1 ratio; PEF, peak expiratory flow.

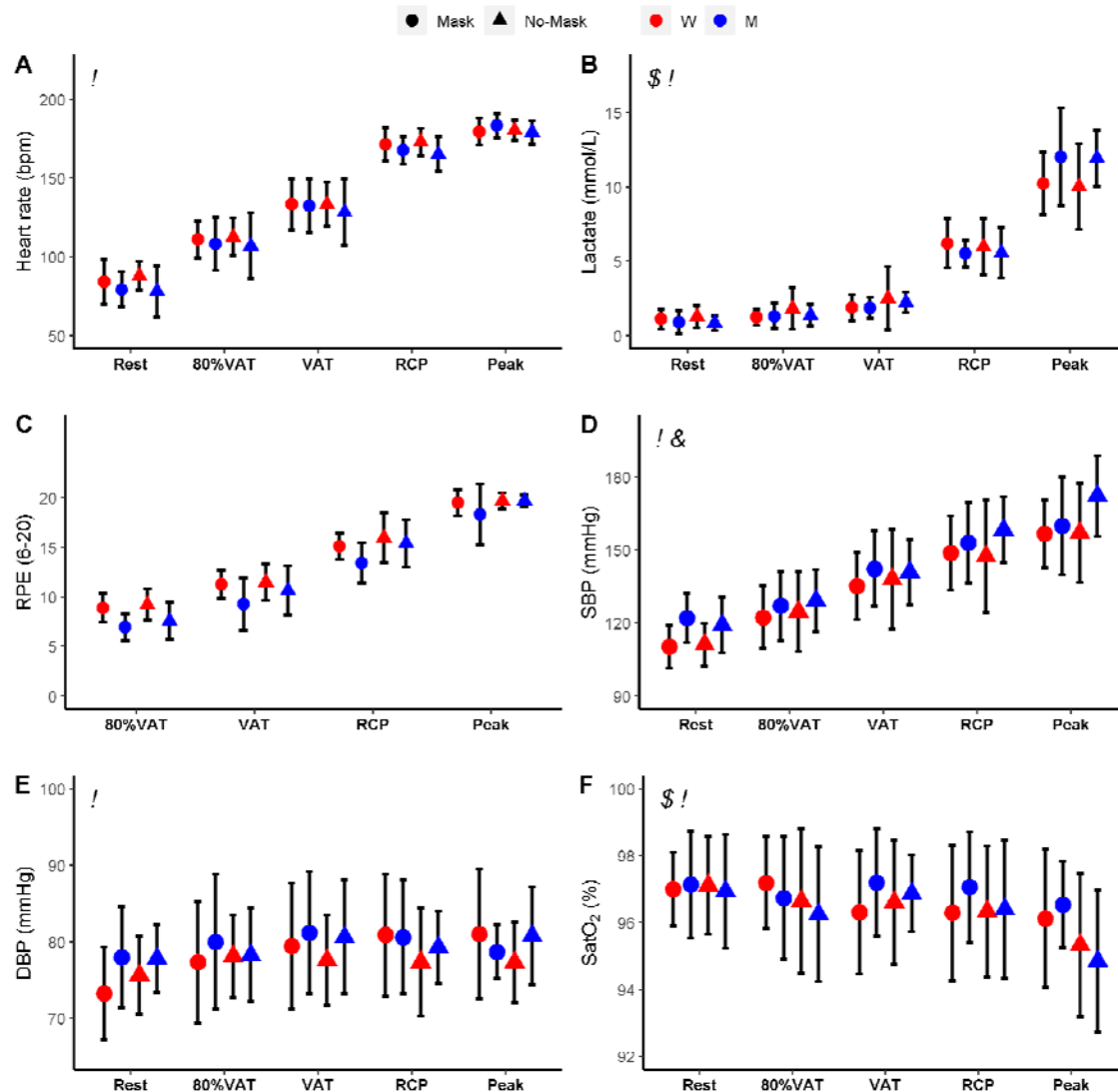
Significance labels: <sup>\$</sup>, main effect of condition; <sup>!</sup>, main effect of sex; <sup>&</sup>, interaction effect





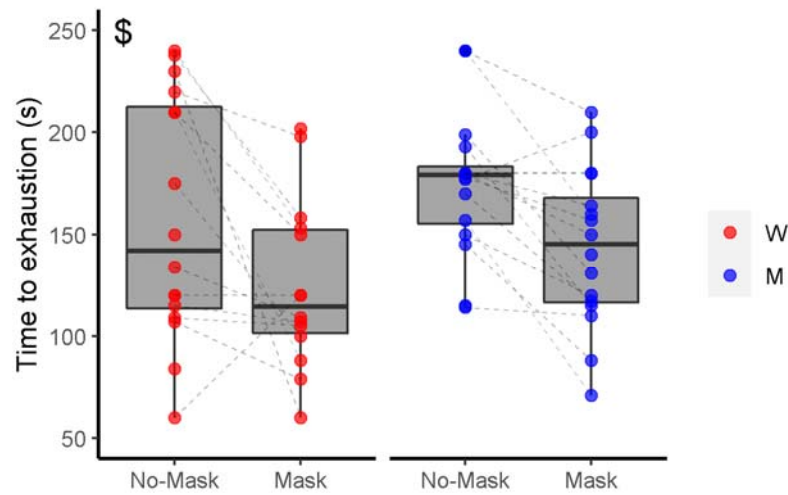
**Figure 1.** Inspiratory capacity, end expiratory lung volume (EELV), EELV by forced vital capacity ratio (EELV/FVC), respiratory frequency, tidal volume, respiratory frequency by tidal volume, CO<sub>2</sub> partial pressure (PetCO<sub>2</sub>) and ventilatory equivalent for carbon dioxide (VE/VCO<sub>2</sub>) data expressed as mean ± 1 standard deviation.

\$ main effect of Mask; ! main effect of intensity; & main effect of sex; \* condition\*intensity interaction; ♂ condition\*intensity interaction for men; ♀ condition\*intensity interaction for women.



**Figure 2.** Heart rate, lactate, rating of perceived effort (RPE), systolic (SBP) and diastolic (DBP), and oxygen saturation (SatO<sub>2</sub>) expressed as mean  $\pm$  1 standard deviation.

\$ main effect of Mask; ! main effect of intensity; & main effect of sex; ♂ condition\*intensity interaction for men.



**Figure 3.** Time-to-exhaustion during the final stage. Dashed lines connect individual performance data between No-Mask and Mask condition.

\$ main effect of Mask

## Discussion

This study showed that breathing difficulty with a cloth facemask is dependent upon the exercise intensity, with lower distress at less severe intensities. Mask wearing did not substantially affect physiological or metabolic variables during exercise, regardless of sex and intensity. From a practical perspective, these data suggest that use of a cloth facemask for protecting individuals from SARS-CoV-2 infections should not be a barrier to the engagement in moderate-to-heavy physical activity.

The main novelty of the current study is that we assessed the influence of wearing a mask on respiratory and cardiovascular variables across several exercise intensities, spanning moderate to severe domains [10]. Wearing a mask did not modify most respiratory variables in the moderate to heavy exercise domains, with only inspiratory capacity reduced at 80% VAT with the mask. Our findings suggest that reductions in inspiratory capacity early in exercise are reflective of a decrease in contractile power of the inspiratory muscles. This inspiratory distress may place a greater strain on the respiratory muscles to maintain breathing requirements during exercise. This was not seen in the moderate to heavy domains but was manifested in an inability to maintain the physiological increases in respiratory frequency and tidal volume at the higher intensities. For example, during VAT, although breathing frequency was reduced, this was likely compensated by increases in tidal volume as evidenced by no differences between conditions, suggesting that the cloth facemask did not negatively inhibit the ability of the respiratory system to work at moderate, heavy and severe exercise intensities. Indeed, this might explain the reduced  $V_E/V_{CO_2}$  with a mask. At higher intensities, however, both respiratory frequency and tidal volume were reduced with a mask, which may have led to an inability to maintain respiratory homeostasis and affected subsequent performance. Our data are in agreement with previous studies showing a reduced

exercise capacity with different facemasks [6 22], though others have shown no negative impact [8, 23]. It is possible that different types of facemasks and respirators (e.g., FFP2/N95, surgical, cloth facemasks) and participants' fitness level may have contributed to these conflicting findings.

Despite some changes in respiratory variables, no cardiovascular measure was affected using a cloth facemask. Even during the highest exercise intensity domains, there were no changes in heart rate, or systolic and diastolic blood pressure when wearing a cloth facemask. Moreover, the slight overall reduction in blood oxygen saturation (not detected at individual exercise intensities) was not clinically meaningful, supporting previous studies showing no effect of wearing a facemask on oxygen saturation [24, 25]. These findings collectively can counteract misinformation during the COVID-19 pandemic, particularly relating to the use of masks during exercise and its supposed negative effects on cardiac overload, acid-base balance, and oxygen saturation [28].

We had speculated that any potential physiological effects associated with wearing a mask during exercise could be greater in women, who have an overall lower higher cardiorespiratory reserve than men, owing to classically described morphological and physiological sex-differences (e.g., smaller lungs, lower O<sub>2</sub> carrying capacity and maximum cardiac output). This hypothesis was not confirmed, as the effects of the cloth facemask on physiological measures were mostly similar between women and men irrespective of exercise intensities. Exercise capacity was reduced by 23.9% in women and 17.8% in men when using a cloth facemask, with no differences between sexes. This suggests that the stress imposed by wearing a mask does not constitute a greater physiological or metabolic burden to women vs. men, despite the well-known sex-differences during exercise.

392

393 This study has several limitations. Although the measurement of respiratory variables during  
394 the PSWT provide novel information regarding the respiratory response during different  
395 intensities, participants were required to wear a facemask for breath-by-breath measures over  
396 the cloth facemask. This may have increased the discomfort felt by the participants and may  
397 also have led to some inaccuracies in measurements due to air escaping. The current data  
398 cannot be directly extrapolated to trained individuals; however, we felt it important to  
399 investigate this matter among a non-trained population, as there has been intense debate on  
400 the physiological repercussions and potential adverse effects of face masks in non-trained  
401 individuals. Since sufficient levels of physical activity prevent morbidities and mortality [29-  
402 31] and improve vaccine immunogenicity [32], it is important that mask mandates do not lead  
403 to a reduction in physical activity. In this regard, the present data provide relevant  
404 information that wearing a cloth facemask will not have a negative impact during exercise at  
405 moderate-to-heavy intensities, which is associated with a plethora of health-related benefits  
406 [33, 34]. Whether the negative perpetual feelings related to the use of masks may result in  
407 less adherence to exercise remains to be examined. Furthermore, the influence of mask  
408 wearing during exercise in clinical populations warrants investigation.

409

410 In conclusion, although wearing a cloth facemask may reduce maximal exercise capacity, it  
411 did not impose significant respiratory or cardiovascular changes during exercise performed at  
412 moderate-to-heavy intensities. These data have important practical implications as they can  
413 debunk unfounded allegations of harmful effects of facemasks during exercise and help  
414 inform new exercise recommendations for health during the COVID-19 pandemic.

## 415    **Acknowledgments**

416    The authors would like to thank all of the athletes for taking part in this research. The authors  
417    received no specific funding for this work. B.G (2017/13552-2), G.B. (2020/12036-3),  
418    T.N.O. (2020/04368-6) and B.S. (2016/50438-0) have been financially supported by  
419    Fundação de Amparo à Pesquisa do Estado de São Paulo. B.S. has also received a grant from  
420    Faculdade de Medicina da Universidade de São Paulo (2020.1.362.5.2).

## References

1. Clase CM, Fu EL, Joseph M, et al. Cloth Masks May Prevent Transmission of COVID-19: An Evidence-Based, Risk-Based Approach. *Annals of internal medicine* 2020;**173**(6):489-91 doi: 10.7326/M20-2567[published Online First: Epub Date]].
2. Leung NHL, Chu DKW, Shiu EYC, et al. Respiratory virus shedding in exhaled breath and efficacy of face masks. *Nature medicine* 2020;**26**(5):676-80 doi: 10.1038/s41591-020-0843-2[published Online First: Epub Date]].
3. Stephenson J. CDC Studies Underscore Continued Importance of Masks to Prevent Coronavirus Spread. *JAMA Health Forum* 2021;**2**(2):e210207-e07 doi: 10.1001/jamahealthforum.2021.0207[published Online First: Epub Date]].
4. Burgess A, Horii M. Risk, ritual and health responsabilisation: Japan's 'safety blanket' of surgical face mask-wearing. *Sociology of health & illness* 2012;**34**(8):1184-98 doi: 10.1111/j.1467-9566.2012.01466.x[published Online First: Epub Date]].
5. Groves LM, Usagawa L, Elm J, et al. Community Transmission of SARS-CoV-2 at Three Fitness Facilities — Hawaii, June–July 2020. *MMWR and Morbidity and Mortality Weekly Report* 2021;**70**:316-20
6. Driver S, Reynolds M, Brown K, et al. Effects of wearing a cloth face mask on performance, physiological and perceptual responses during a graded treadmill running exercise test. *Br J Sports Med* 2021 doi: 10.1136/bjsports-2020-103758[published Online First: Epub Date]].
7. Fikenzer S, Uhe T, Lavall D, et al. Effects of surgical and FFP2/N95 face masks on cardiopulmonary exercise capacity. *Clinical research in cardiology : official journal of the German Cardiac Society* 2020;**109**(12):1522-30 doi: 10.1007/s00392-020-01704-y[published Online First: Epub Date]].
8. Shaw K, Butcher S, Ko J, et al. Wearing of Cloth or Disposable Surgical Face Masks has no Effect on Vigorous Exercise Performance in Healthy Individuals. *Int J Environ Res Public Health* 2020;**17**(21) doi: 10.3390/ijerph17218110[published Online First: Epub Date]].
9. Coyle EF, Coggan AR, Hopper MK, et al. Determinants of endurance in well-trained cyclists. *J Appl Physiol* (1985) 1988;**64**(6):2622-30 doi: 10.1152/jappl.1988.64.6.2622[published Online First: Epub Date]].
10. Burnley M, Jones AM. Oxygen uptake kinetics as a determinant of sports performance. *Eur J Sport Sci* 2007;**7**(2):63-79 doi: 10.1080/17461390701456148[published Online First: Epub Date]].



11. Whipp BJ, Ward SA, Rossiter HB. Pulmonary O<sub>2</sub> uptake during exercise: conflating muscular and cardiovascular responses. *Med Sci Sports Exerc* 2005;**37**(9):1574-85 doi: 10.1249/01.mss.0000177476.63356.22[published Online First: Epub Date]].
12. Duke JW. Sex Hormones and Their Impact on the Ventilatory Responses to Exercise and the Environment. In: Hackney AC, ed. *Sex Hormones, Exercise and Women: Scientific and Clinical Aspects*. Cham: Springer International Publishing, 2017:19-34.
13. Freedson P, Katch VL, Sady S, et al. Cardiac output differences in males and females during mild cycle ergometer exercise. *Medicine and science in sports* 1979;**11**(1):16-9
14. Lewis DA, Kamon E, Hodgson JL. Physiological differences between genders. Implications for sports conditioning. *Sports Med* 1986;**3**(5):357-69 doi: 10.2165/00007256-198603050-00005[published Online First: Epub Date]].
15. Hagstromer M, Oja P, Sjostrom M. The International Physical Activity Questionnaire (IPAQ): a study of concurrent and construct validity. *Public health nutrition* 2006;**9**(6):755-62 doi: 10.1079/phn2005898[published Online First: Epub Date]].
16. Atkinson G, Reilly T. Circadian variation in sports performance. *Sports Med* 1996;**21**(4):292-312 doi: 10.2165/00007256-199621040-00005[published Online First: Epub Date]].
17. Graham BL, Steenbruggen I, Miller MR, et al. Standardization of Spirometry 2019 Update. An Official American Thoracic Society and European Respiratory Society Technical Statement. *American journal of respiratory and critical care medicine* 2019;**200**(8):e70-e88 doi: 10.1164/rccm.201908-1590ST[published Online First: Epub Date]].
18. Howley ET, Bassett DR, Jr., Welch HG. Criteria for maximal oxygen uptake: review and commentary. *Med Sci Sports Exerc* 1995;**27**(9):1292-301
19. Guenette JA, Chin RC, Cory JM, et al. Inspiratory Capacity during Exercise: Measurement, Analysis, and Interpretation. *Pulmonary medicine* 2013;**2013**:956081 doi: 10.1155/2013/956081[published Online First: Epub Date]].
20. Neder JA, Andreoni S, Lerario MC, et al. Reference values for lung function tests: II. Maximal respiratory pressures and voluntary ventilation. *Brazilian Journal of Medical and Biological Research* [online] 1999;**32**(6):719-27 doi: 10.1590/S0100-879X1999000600007[published Online First: Epub Date]].
21. Borg GA. Psychophysical bases of perceived exertion. *Medicine and science in sports and exercise* 1982;**14**(5):377-81

- 488 22. Li Y, Tokura H, Guo YP, et al. Effects of wearing N95 and surgical facemasks on heart  
489 rate, thermal stress and subjective sensations. *International archives of occupational*  
490 *and environmental health* 2005;**78**(6):501-9 doi: 10.1007/s00420-004-0584-  
491 4[published Online First: Epub Date]].
- 492 23. Epstein D, Korytny A, Isenberg Y, et al. Return to training in the COVID-19 era: The  
493 physiological effects of face masks during exercise. *Scand J Med Sci Sports*  
494 2021;**31**(1):70-75 doi: 10.1111/sms.13832[published Online First: Epub Date]].
- 495 24. Shaw KA, Zello GA, Butcher SJ, et al. The impact of face masks on performance and  
496 physiological outcomes during exercise: a systematic review and meta-analysis. *Appl*  
497 *Physiol Nutr Metab* 2021:1-11 doi: 10.1139/apnm-2021-0143[published Online First:  
498 Epub Date]].
- 499 25. Fukushi I, Nakamura M, Kuwana S-i. Effects of wearing facemasks on the sensation of  
500 exertional dyspnea and exercise capacity in healthy subjects. *PloS one*  
501 2021;**16**(9):e0258104 doi: 10.1371/journal.pone.0258104[published Online First:  
502 Epub Date]].
- 503 26. Kouzy R, Abi Jaoude J, Kraitem A, et al. Coronavirus Goes Viral: Quantifying the  
504 COVID-19 Misinformation Epidemic on Twitter. *Cureus* 2020;**12**(3):e7255 doi:  
505 10.7759/cureus.7255[published Online First: Epub Date]].
- 506 27. Roozenbeek J, Schneider CR. Susceptibility to misinformation about COVID-19 around  
507 the world. 2020;**7**(10):201199 doi: 10.1098/rsos.201199[published Online First: Epub  
508 Date]].
- 509 28. Chandrasekaran B, Fernandes S. “Exercise with facemask; Are we handling a devil's  
510 sword?” – A physiological hypothesis. *Medical Hypotheses* 2020;**144**:110002 doi:  
511 <https://doi.org/10.1016/j.mehy.2020.110002>[published Online First: Epub Date]].
- 512 29. Lavie CJ, Ozemek C, Carbone S, et al. Sedentary Behavior, Exercise, and Cardiovascular  
513 Health. *Circulation research* 2019;**124**(5):799-815 doi:  
514 10.1161/circresaha.118.312669[published Online First: Epub Date]].
- 515 30. Fiuza-Luces C, Garatachea N, Berger NA, et al. Exercise is the real polypill. *Physiology*  
516 (Bethesda, Md) 2013;**28**(5):330-58 doi: 10.1152/physiol.00019.2013[published  
517 Online First: Epub Date]].
- 518 31. Mok A, Khaw KT, Luben R, et al. Physical activity trajectories and mortality: population  
519 based cohort study. 2019;**365**:l2323 doi: 10.1136/bmj.l2323[published Online First:  
520 Epub Date]].

- 521 32. Gualano B, Lemes I, Silva R, et al. Physical activity associates with enhanced  
522 immunogenicity of an inactivated virus vaccine against SARS-CoV-2 in patients with  
523 autoimmune rheumatic diseases: Research Square, 2021.
- 524 33. Gebel K, Ding D, Chey T, et al. Effect of Moderate to Vigorous Physical Activity on All-  
525 Cause Mortality in Middle-aged and Older Australians. JAMA Internal Medicine  
526 2015;**175**(6):970-77 doi: 10.1001/jamainternmed.2015.0541[published Online First:  
527 Epub Date]].
- 528 34. Hupin D, Roche F, Gremeaux V, et al. Even a low-dose of moderate-to-vigorous physical  
529 activity reduces mortality by 22% in adults aged  $\geq 60$  years: a systematic review and  
530 meta-analysis. Br J Sports Med 2015;**49**(19):1262-67 doi: 10.1136/bjsports-2014-  
531 094306[published Online First: Epub Date]].

532