

The economic burden of low back pain in KwaZulu-Natal, South Africa: a prevalence-based cost-of-illness analysis from the healthcare provider's perspective.

*Morris Kahere¹, Cebisile Ngcamphalala², Ellinor Östensson^{3,4}, Themba Ginindza^{1,2}

Affiliations: ¹Discipline of Public Health Medicine, School of Nursing and Public Health, University of KwaZulu-Natal, Durban, South Africa, ²Cancer & Infectious Diseases Epidemiology Research Unit (CIDERU), College of Health Sciences, University of KwaZulu-Natal, South Africa, ³Department of Women's and Children's Health, Karolinska Institute, Stockholm, Sweden, ⁴Department of Medical Epidemiology and Biostatistics, Karolinska Institutet, Stockholm, Sweden

Correspondence author: *Morris Kahere

Discipline of Public Health, School of Nursing and Public Health, University of KwaZulu-Natal, 2nd Floor George Campbell Building, Mazisi Kunene Road, 4041, Durban, South Africa, Email: mrrskhr@gmail.com

Author's email address

Morris Kahere: mrrskhr@gmail.com

NOTE: This preprint reports new research that has not been certified by peer review and should not be used to guide clinical practice.

ABSTRACT

Background

Globally, low back pain (LBP) is associated with high economic costs due to healthcare expenditure and production loss. There is lack of evidence regarding this in low-and-middle-income-countries (LMICs), including South Africa. Thus, the study aimed to determine the economic burden of LBP from the providers perspective.

Methods

We used a retrospective prevalence-based cost-of-illness methodology to estimate the direct medical cost of LBP. Direct medical costs constituted costs associated with healthcare utilisation in inpatient care, outpatient care, investigations, consultations, and cost of auxiliary devices. We used diagnostic-specific data obtained from hospital clinical reports. All identifiable direct medical costs were estimated using a top-down approach for costs associated with healthcare and a bottom-up approach for costs associated with inpatient and outpatient care.

Results

The prevalence of CLBP was 24.3% (95% CI: 23.5 – 25.1). The total annual average direct medical costs associated with LBP was US\$5.4 million. Acute LBP and CLBP contributed 17% (US\$0.92 million) and 83% (US\$4.48 million) of the total annual average direct medical cost, respectively. The per patient total annual average direct medical cost for acute LBP and CLBP were US\$99.43 and US\$1,516.67, respectively. The total average cost of medication per patient for acute and CLBP were US\$82.53 and US\$320.31, respectively. Overall, the outpatient care costs contributed the largest share (38.9%, US\$2.10 million) of the total average direct medical cost, 54.9% (US\$1.15 million) of which was attributed to NSAIDs and only 10% (US\$0.21 million) of the total outpatient cost was due to rehabilitation. The total average cost of diagnostic investigations was estimated at US\$831,595.40, which formed 15.4% of the average total cost.

Conclusion

The economic burden of LBP is high in South Africa. Majority of costs were attributed to CLBP. Action should be taken to develop culturally validated cost-effective prevention measures to mitigate the burden of LBP.

57 **Key words:** Chronic low back pain, cost of illness, economic burden, direct medical cost

58

59

Background

Low back pain (LBP) is a global public health problem that occurs in high-income-countries (HICs) and low-and-middle-income countries (LMICs) across all age groups [1]. Despite the technological advancements in diagnosis and the advent of several intervention approaches in the recent years, Low back pain is known to cause significant socio-economic burden to the society [2]. According to the Global Burden of Disease 2017, the years lived with disability (YLD) due to low back pain has increased by 52.7%, from 42.5 million in 1990 to 64.9 million in 2017 [1, 3]. Globally, LBP is now the leading cause of disability [4]. The burden attributed to LBP is predicted to continue increasing, particularly in LMICs where there is limited health coverage and pro-communicable disease control [1]. Great strides should be taken to address this increasing burden and to alleviate the impact it is imposing on health and socio-economic systems. The magnitude of the burden of LBP can be expressed in prevalence, incidence, and cost estimates.

The prevalence and incidence estimate of LBP vary among studies due to differences in definitions of LBP and methodologies used in different studies over time. Additionally, Anema et al reported that these variations are also influenced by the differences in the healthcare seeking behavior, local socio-cultural systems and beliefs around cause and effect [5]. This lack of coherence and homogeneity makes it difficult to compare different studies. However, in the Western world, the point prevalence of low back pain has been reported to be 15-30%, with an estimated 1-month prevalence of 19-43% and a lifetime prevalence of up to 85% [1]. A systematic review by Morris et al investigating the prevalence of low back pain in Africa showed a pooled lifetime, 12-months and point prevalence of low back pain of 47%, 57% and 39% respectively [6]. These high prevalence estimates observed in the western world can be attributed to a great awareness of LBP and the willingness to report symptoms as compared to other parts of the world [1, 7].

About 90% of low back pain cases are not severe and normally resolves within a few days to a few weeks but up to 10% of cases will develop chronic low back pain (CLBP). According to Watson et al (2010) most patients do not get completely healed but will have “flare-ups” against a background of CLBP, meaning that the majority of patients will have recurrent symptoms [8]. Regardless of the small percentage of CLBP sufferers, this group is responsible for the majority of the economic burden incurred [9]. A USA study of insurance claims by Hashemi et al showed that up to 8.8% of low back pain sufferers had symptoms that lasted for

a year and accounted for up to 84.7% of the total costs [10]. Similarly, in a study of the UK working population, only 3% of the patients had symptoms lasted for more than three months but contributed to 33% of the benefits paid out during the period of that study [8, 11].

A cross-sectional study by Ekman et al investigating the burden of CLBP in Sweden reported that the total annual direct and indirect cost of CLBP per patient were estimated at US\$2 900 and US\$16 600 in 2002 prices, respectively [9]. Another cross-sectional Switzerland study by Wieser et al reported the direct costs of CLBP to be €2.3 billion and indirect costs were estimated at €4.1 billion using the human capital approach and €2.2 billion using the friction cost method, representing 2.3% of the total gross domestic production[12]. Walker et al estimated the direct cost of LBP at AU\$1.02 billion and indirect cost at AU\$8.15 billion among the Australian adults [13]. In the Netherlands, van Tulder et al reported that the total annual direct costs of LBP were estimated at US\$367.6 million, while the total annual indirect costs were estimated at US\$4.6 billion [14]. Estimates of the economic burden of LBP in the United States, for both direct and indirect costs, range from \$84.1 billion to \$624.8 billion [2].

The national development plan (NDP) and health policy in South Africa, seek to decrease the prevalence of non-communicable diseases and improve health outcomes. Plans are also underway to implement the national health insurance (NHI) to ensure accessibility to health and promote quality in health. As the leading driver of disability, understanding of the costs associated with CLBP remains critical to inform health care policy decision and subsequently improve management of CLBP. Using patient health records from five hospital this study aims to estimate the economic burden of CLBP among adults (aged ≥ 18 years), by estimating direct medical costs including inpatient- and outpatient care for management of LBP in tertiary care.

Materials and Methods

Study area

This is a prevalence-based cost of illness study conducted in five randomly selected provincial public hospitals in the eThekweni district in KwaZulu-Natal, South Africa. KwaZulu-Natal is an East coastal province with the second largest population in South Africa. The 2019 population and housing census estimated the population of KwaZulu-Natal to be approximately 11.3 million people (19.2% of the total population) [15]. The KZN GDP per capita is estimated at US\$10 406, which makes it fall in the low-income category [16]

Study setting

Addington is a district and regional hospital with 471 beds and 2200 professionals. Addington hospital offer a variety of services including inpatient occupational therapy services for disabled patients. Mahatma Gandhi is a 350 bedded hospital offering inpatient and outpatient care services, including inpatient physiotherapy and occupational therapy services for musculoskeletal patients. Prince Mshiyeni is a 1075 bedded hospital located in Umlazi township. Prince Mshiyeni offers both district and regional services and a variety of clinics available within. Hillcrest hospital is a 167 bedded specialised chronic pain patients' hospital that takes patients who need nursing care. These patients are referred from the hospitals throughout the entire province of KwaZulu-Natal. This hospital also offers outpatient services for chronic medication and rehabilitation. Clairwood is a 275-bedded specialised rehabilitation and convalescent hospital.

Method of costing

From a healthcare provider's perspective, we employed a prevalence-based method [17] with a bottom-up approach identifying related cost procedures and activities to estimate direct medical costs associated with outpatient and inpatient hospital care for LBP in KZN between 2018-2019 [17]. Patient records from five eThekweni District Hospitals were accessed to determine the number of patients diagnosed with LBP. Low back pain diagnoses classified as per the international classification of diseases (ICD)-10 codes, specifically M40 – M54, M96 and M99 with subclassification codes related to the lumbar spine or lumbosacral spine were included in this study. Codes which did not allow practical delineation of the lumbar spine were excluded [18]. A simple random sampling technique was used to select the participating hospitals namely Addington Hospital, Clairwood Hospital, Hillcrest Hospital, Mahatma Gandhi Memorial Hospital and Prince Mshiyeni Memorial Hospital.

Management of LBP in South Africa

The management of LBP in South Africa follows a referral pattern. With the health care system organised into four hierarchical levels of access, the South African primary health care is comprised of primary health care centres (PHC), community health care centres (CHC), local clinics and general practitioners (GP). The PHC is first step in the provision of health care for LBP patients and can only dispense pain medication. Patients requiring further investigations

will be referred to district hospitals where general support in diagnostics (laboratory tests and imaging studies), treatment, care, counselling, and rehabilitation is provided. The treatment of LBP at a district hospital primarily involves prescription of pain medications, mainly non-steroidal anti-inflammatory drugs (diclofenac and celecoxib), opioids (tramadol) and antidepressants (amitriptyline) [19]. Tramadol and a combination of tramadol and diclofenac are the most prescribed medication. Antidepressants are prescribed if a patient presents with symptoms of depression, and they can also be used in combination with NSAIDs and or Tramadol. Physiotherapeutic management involves exercises and stretches, transcutaneous electrical nerve stimulation, ultrasound, and laser therapy. Foot orthotics (insoles) are prescribed if the biomechanics of the foot is suspected as the root of the problem. In emergency cases, invasive procedures can be recommended. The flow of events is depicted in Figure 1.

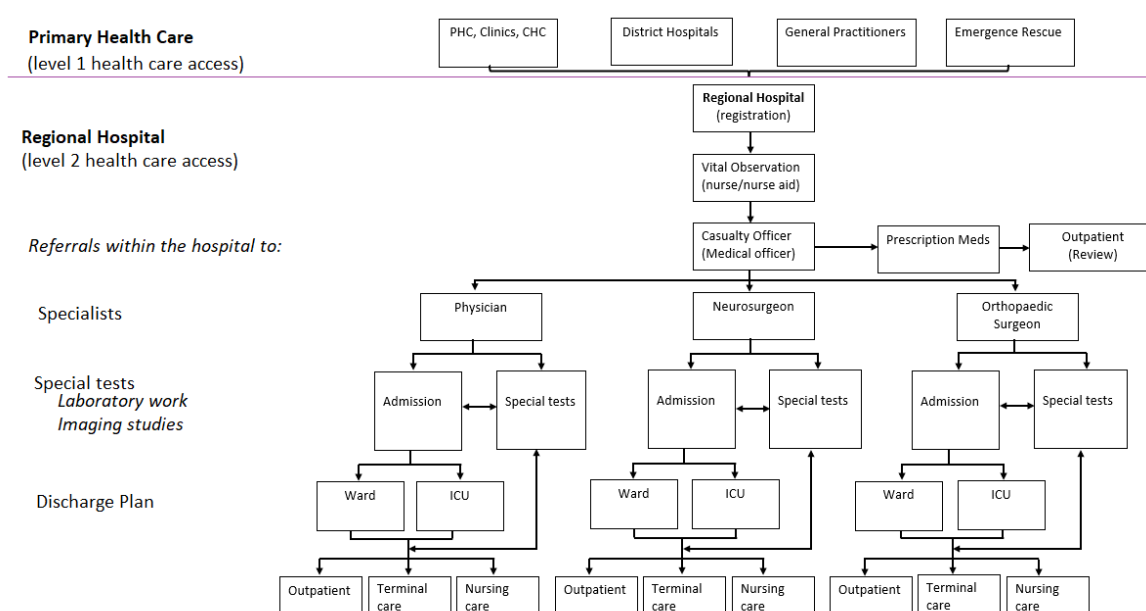


Fig. 1. Patient Care Pathway

Costs

We collected all identifiable direct medical costs incurred due to consultations, resource utilisations for inpatient and outpatient care events associated with low back pain diagnosis/special investigations and treatment (including medications, any invasive procedures, rehabilitation, use of any auxiliary devices) [20]. We computed all costs at the 2019 price level and converted from the South African Rand (ZAR) to United States Dollar (\$) using the 2019 average exchange rate (US\$1 = ZAR 14.45).

Direct medical costs

To estimate the total direct medical costs associated with LBP, we estimated the average cost of each care event documented in the hospital patient records. The average cost for each care component was multiplied by the total corresponding number of patients identified in that component. All cost-generating events were identified and attributed a monetary value based on market or private sources obtained through consultation with senior medical practitioners from private sector (Joint Medical Holdings Ltd).

RESULTS

Participants

A total of 12169 files were retrieved. The prevalence of CLBP was 24.3% (2957/12169). Females represented 55.2% (n=6716) and males 44.8% (n=5453) of the study population, Table 1. The mean \pm standard deviation age was 57.6 \pm 15.2 years. Notably, young adults (aged 18 – 27 years) represented the smallest percentage of the study population 5.2% (n=636). Whilst a majority of the population were females, the proportion of males were higher in the age category, 58 – 67 (1068 males compared to 1041 females).

Table 1.

Direct medical costs associated with outpatient care of acute low back pain

We performed an age-and-gender stratified costing analysis, Table 2. The estimated average direct medical cost associated with outpatient care for acute low back pain increased with increasing age for both genders, Table 2. The total annual average direct medical costs for acute low back pain were estimated at US\$915,948.87 whilst the cost per patient was estimated at US\$99.43. The main cost drivers for acute LBP were pain medication consisting of opioids (tramadol) and non-steroidal anti-inflammatory drugs (NSAIDs) mainly diclofenac and celecoxib which accounted for 83% (US\$760,294.08) of the total cost, and per patient cost of US\$82.53. NSAIDs, opioids and rehabilitation accounted for 68.5% (US\$626,939.04), US\$68.06 per patient, 14.6% (US\$133,355.04), US\$14.48 per patient and 5.4% (US\$49,138.92), US\$5.33 per patient respectively.

Table 2.

Direct medical costs associated with chronic low back pain

The total annual average direct medical cost for chronic low back pain (CLBP) was estimated at US\$4.48 million with the costs per patient estimated at an annual average cost of US\$1,516.67. The highest average cost per patient was observed among the elderly population in both genders, female (US\$2,219.59) and male (US\$1,932.33), Table 3. As per the cost variables, inpatient care contributed the highest cost constituting 46.31% (US\$2.08 million) of the total annual average costs for CLBP followed by outpatient care 26.5% (US\$1.19 million), investigation 18.5% (US\$ 831,595.40), specialists 7.2% (US\$323,880.63) and auxiliaries 1.4% (US\$62,366.84). The main driver of the outpatient costs for CLBP were medication, which contributed 79.6% (US\$ 947,184.96) of the total outpatient costs and 21.12% of the total direct medical cost. NSAIDs were responsible for more than half 55.67 (US\$527,124.00) of the total medication costs and opioids accounted for 24.3% (US\$229,733.28) of the total cost of medication. Males presented with higher costs across the age groups compared female's counterpart (Figure 2). Additionally, the costs increased with age. The total costs among those aged 18-27 were estimated at US\$33,281.37 with the costs more than quadrupling for middle age groups 28 – 37 and 38 – 47 years, Table 5.

Table 3.

Overall estimated cost for LBP

Overall, the total annual direct medical cost for LBP was estimated at US\$5.4 million with costs for ALBP and CLBP accounting for 17% (US\$0.92 million) and 83% (US\$4.48 million) of the total cost, respectively. The per person annual average total direct cost of ALBP and CLBP was estimated at US\$99.43 and US\$1,516.67 respectively. The average total cost per patient for ALBP and CLBP is shown in Table 6. Outpatient care costs occurred across both ALBP and CLBP recording US\$910,357.74 and US\$1,190,149.62 respectively. Medication costs were comparable for both ALBP (US\$760,294.08) and CLBP (US\$947,184.96). Overall, the main cost driver was outpatient care which contributed 38.9% (US\$2.10 million) of the total direct medical cost (US\$5.4 million).

Table 4.

Table 5.

Table 6.

DISCUSSIONS

From the health care providers' perspective, this study estimated costs of LBP (ALBP and CLBP), in KwaZulu-Natal, South Africa. The estimated total annual direct medical cost of LBP was US\$5.4 million with higher costs for CLBP compared to ALPB. There were more females with ALBP whilst the opposite was observed with CLBP. The argument could be that due to maternal health conditions women are likely to present with ALBP whilst on the other hand this could be reflecting the general health seeking behaviour between females and males. General, evidence on disease pattern and health care seeking behaviour in developing worlds have consistently indicated poor health care seeking behaviour among males compared to females [21, 22], hence males being likely to present with CLBP.

The result of this study concurs with several other studies and shows that the economic burden of LBP in South Africa is comparable to other high-income countries. A systematic review by Maetzel et al reported that, the small proportion of chronic LBP patients accounts for a large fraction of the total costs [23, 24]. This was also consistent with what was reported by Gore et al in their study of the burden of CLBP in the United States [24]. This can be attributed to the fact that acute LBP generally last for a few weeks with little or no intervention. Therefore the cost is mostly associated with pain medication and rehabilitation for a few weeks. Defined by persistent pain and or disability for more the 12 weeks, chronic low back pain is associated with multiple consultations for a long period of time. In some cases special investigations will be required to aid the diagnosis [25]. In line with current evidence, CLBP is associated with significant disability, hence the leading driver of years lived with the disease (YLD) and the sixth in terms of the disability adjusted life years (DALYs) [3, 26, 27], hence more costs. Most studies have focused on developing guidelines for management, thus, there is scarcity of evidence on prevention of LBP [28]. Future research should focus on prevention protocols in order to improve health outcome by mitigating LBP disability and its economic impact.

Outpatient costs had the highest costs, contributing about 38.9% (US\$2.10 million) of the total costs. This was expected as outpatient care involves multiple visits for both acute and chronic LBP. This finding concurs with a study done in Netherlands by van Tulder who reported that the outpatient cost were US\$2.1 million [14]. Expectedly, inpatient care had the second highest cost of US\$2.08 million contributing about 38.5% of the total cost. However, van Tulder et al reported that inpatient costs were higher than outpatient costs. This difference can also be attributed to differences in healthcare service delivery, and differences in study methodologies. Inpatient care includes costs for admission and the various professionals a patient interacts with during the hospital stay [29]. The high costs underscores the need for institution measures to

sensitize and educate the public about LBP prevention measures to limit cases of admission which comes with increased consumption of medication and significant disability [29].

Outpatient care costs were presented in both ALBP and CLBP. All cases report at the outpatient for initial management before referrals for admissions or rehabilitations. It was noted that medication was the main cost driver across all the LBP sub-categories (ALBP and CLBP). The most commonly prescribed medication for LBP was NSAIDs. This finding is consistent with what was observed by Hong et al in their cost of illness study in the UK [30]. Consumption of NSAIDs and opioids was noted to be frequent and indicated by the high costs. Due to the non-specific nature of LBP, pain medication is the most common treatment of convenience [25, 31]. Interestingly, the costs increased with age. Again, this is because the prevalence of CLBP increases with age and is associated with multiple consultation, and or therapeutic interventions [30].

To our knowledge this is a first study to estimate costs of LBP in South Africa. The findings show the direct medical costs associated with LBP in primary care. Low back pain is a condition that has been reported frequently across population and under reported, yet its progress affect quality of life and can lead to loss of income due to disability and subsequently over consumption of medication [25]. Our findings indicate that LBP is of public health concern and should be prioritised as research has shown that the future predictions of its economic burden are substantial and continue to rise in low-and-middle-income-countries if no counteracting strategies are implemented [25]. As such it is imperative that LBP should form part of public health promotion and prevention messaging.

Whilst our study is presenting critical information on direct medical costs, we would acknowledge that our data was limited to only direct medical costs associated with outpatients, inpatient care, investigations, specialists, and use of auxiliary devices. In addition, results might not be representative at a national level because of the limited number of participating hospitals. However, the presented finds still suggest the need for action/attention toward recognizing LBP as one of the public health conditions needing attention and with great potential to have negative consequences on health resources. Secondly, it is likely that the reported numbers were underestimated. The ICD codes were handwritten, and this might have affected the reading and results in the exclusion of other potential files, therefore, we it is difficult to exclude selection bias.

CONCLUSION

The direct medical expenditure for low back pain in KwaZulu-Natal is high mainly as a consequence of inpatient and outpatient care events. Outpatient care was the main cost driver and was significantly contributed by medication. Chronic LBP was responsible for the majority of costs, though it was represented by a small proportion of cases. The main cost drivers for CLBP was the inpatient care which involved ward admissions, nursing care and terminal care. Acute LBP only contributed a small percentage of the total costs, though it was represented by the majority of cases. The most common form of treatment for LBP was pain medication, of which NSAIDs was the most commonly prescribed medication, which was sometimes given in combination with opioids or antidepressants. Cost effective, culturally validated, context specific guidelines for the prevention of LBP should be developed and implemented. Measures to be taken to ensure practitioners and patients adherence to guidelines. Thus, this is important for policy makers, funders, stakeholders and other involved actors to consider the prioritization of LBP research in the South African context to design cost-effective preventive measures. Urgent action should be taken to develop culturally validated guidelines based on local data to improve the future outcome of LBP and mitigate the burden thereof.

Declarations

Ethical considerations

The study was approved by University of KwaZulu-Natal Biomedical Research Ethics Committee (BREC) (Ref No: BREC/00000205/2019) and the KwaZulu-Natal Department of Health Ethics (Ref No: KZ_201909_002). Gatekeeper permissions were sort from participating institutions prior to the commencement of data collection. To guarantee the anonymity of each participant, the names of respondents, their addresses or other identifying information were included in the questionnaires, but rather each participant was assigned a study ID which was only accessed by the researcher. There was no human participation in this study, as it was a retrospective study of hospital health records for low back pain patients who presented to the hospitals between 2018 and 2019, therefore, no participants consent was required.

Consent for publication

Not applicable

329 **Availability of data and materials**

330 All data generated or analysed during this study will be included in the published article.

331 **Competing interests**

332 The authors declare that they have no competing interests.

333 **Funding**

334 This study was funded by the University of KwaZulu-Natal College of Health Sciences (CHS
335 Scholarship).

336 **Authors' contributions**

337 MK conceptualised the manuscript, analysed the data, wrote the initial draft, and drew all the
338 tables. MK and CN critically reviewed and improved the first manuscript draft. EO and TG
339 proofread the final manuscript. All authors (MK, CN, EO and TG) approved the final
340 manuscript.

341 **Acknowledgements**

342 The authors would like to thank the University of KwaZulu-Natal (UKZN) for the provision
343 of resources towards this project and the UKZN CHS Scholarship that was awarded to facilitate
344 the research running costs.

345

346

347

References

1. Hartvigsen, J., et al., *What low back pain is and why we need to pay attention*. The Lancet, 2018. **391**(10137): p. 2356-2367.
2. Dagenais, S., J. Caro, and S. Haldeman, *A systematic review of low back pain cost of illness studies in the United States and internationally*. The spine journal, 2008. **8**(1): p. 8-20.
3. Wu, A., et al., *Global low back pain prevalence and years lived with disability from 1990 to 2017: estimates from the Global Burden of Disease Study 2017*. Annals of translational medicine, 2020. **8**(6): p. 299-299.
4. Vos, T., et al., *Global, regional, and national incidence, prevalence, and years lived with disability for 310 diseases and injuries, 1990–2015: a systematic analysis for the Global Burden of Disease Study 2015*. The lancet, 2016. **388**(10053): p. 1545-1602.
5. Anema, J.R., et al., *Can cross country differences in return-to-work after chronic occupational back pain be explained? An exploratory analysis on disability policies in a six country cohort study*. Journal of occupational rehabilitation, 2009. **19**(4): p. 419.
6. Morris, L.D., et al., *An update on the prevalence of low back pain in Africa: a systematic review and meta-analyses*. BMC Musculoskeletal Disorders, 2018. **19**(1): p. 196.
7. Igwesi-Chidobe, C.N., et al., *Biopsychosocial factors associated with chronic low back pain disability in rural Nigeria: a population-based cross-sectional study*. BMJ global health, 2017. **2**(3).
8. Watson, P., C. Main, and G. Waddell, *Medically certified work loss, recurrence and costs of wage compensation for back pain: A follow-up study of the working population of Jersey*. Occupational Health and Industrial Medicine, 1999. **1**(40): p. 32.
9. Ekman, M., et al., *Burden of Illness of Chronic Low Back Pain in Sweden: A Cross-Sectional, Retrospective Study in Primary Care Setting*. Spine, 2005. **30**(15): p. 1777-1785.
10. Hashemi, L., B.S. Webster, and E.A. Clancy, *Trends in disability duration and cost of workers' compensation low back pain claims (1988-1996)*. Journal of Occupational and Environmental Medicine, 1998. **40**(12): p. 1110-1119.
11. Watson, P., et al., *Medically certified work loss, recurrence and costs of wage compensation for back pain: a follow-up study of the working population of Jersey*. British Journal of Rheumatology, 1998. **37**(1): p. 82-86.
12. Wieser, S., et al., *Cost of low back pain in Switzerland in 2005*. The European Journal of Health Economics, 2011. **12**(5): p. 455-467.
13. Walker, B.F., R. Muller, and W.D. Grant, *Low Back Pain in Australian Adults: The Economic Burden*. Asia Pacific Journal of Public Health, 2003. **15**(2): p. 79-87.
14. van Tulder, M.W., B.W. Koes, and L.M. Bouter, *A cost-of-illness study of back pain in The Netherlands*. Pain, 1995. **62**(2): p. 233-240.
15. Stats, S., *Statistical Release P0302. Mid-year population estimates 2013*. Pretoria, 2019: p. 6.
16. Jakovljevic, M. and T.E. Getzen, *Growth of global health spending share in low and middle income countries*. Frontiers in pharmacology, 2016. **7**: p. 21.
17. Costa, N., et al., *Methodological considerations in cost of illness studies on Alzheimer disease*. Health Economics Review, 2012. **2**(1): p. 18.
18. Walker, B., R. Muller, and W. Grant, *Low back pain in Australian adults: the economic burden*. Asia Pacific Journal of Public Health, 2003. **15**(2): p. 79-87.
19. Major-Hesloot, M., et al., *Management of LBP at primary care level in South Africa: up to standards?* African Health Sciences, 2014. **14**(3): p. 698-706.
20. Rice, D.P., *Estimating the cost of illness (health economics series no. 6, PHS no. 947-6)*. Washington, DC: US Government Printing Office, 1966.
21. Galdas, P.M., F. Cheater, and P. Marshall, *Men and health help-seeking behaviour: literature review*. Journal of advanced nursing, 2005. **49**(6): p. 616-623.

22. Hjelm, K. and F. Atwine, *Health-care seeking behaviour among persons with diabetes in Uganda: an interview study*. BMC International Health and Human Rights, 2011. **11**(1): p. 11.
23. Maetzel, A. and L. Li, *The economic burden of low back pain: a review of studies published between 1996 and 2001*. Best Practice & Research Clinical Rheumatology, 2002. **16**(1): p. 23-30.
24. Gore, M., et al., *The Burden of Chronic Low Back Pain: Clinical Comorbidities, Treatment Patterns, and Health Care Costs in Usual Care Settings*. Spine, 2012. **37**(11): p. E668-E677.
25. Hartvigsen, J., et al., *What low back pain is and why we need to pay attention*. Lancet, 2018. **391**(10137): p. 2356-2367.
26. Hoy, D., et al., *The global burden of low back pain: estimates from the Global Burden of Disease 2010 study*. Annals of the rheumatic diseases, 2014. **73**(6): p. 968-974.
27. Murray, C.J., et al., *Disability-adjusted life years (DALYs) for 291 diseases and injuries in 21 regions, 1990–2010: a systematic analysis for the Global Burden of Disease Study 2010*. The lancet, 2012. **380**(9859): p. 2197-2223.
28. Clark, S. and R. Horton, *Low back pain: a major global challenge*. The Lancet, 2018. **391**(10137): p. 2302.
29. Becker, A., et al., *Low Back Pain in Primary Care: Costs of Care and Prediction of Future Health Care Utilization*. Spine, 2010. **35**(18): p. 1714-1720.
30. Hong, J., et al., *Costs associated with treatment of chronic low back pain: an analysis of the UK General Practice Research Database*. Spine, 2013. **38**(1): p. 75-82.
31. Buchbinder, R., et al., *Low back pain: a call for action*. The Lancet, 2018. **391**(10137): p. 2384-2388.

Table 1. Demographic characteristics

Age (years) Mean±SD = 57,6±15,2	Female (n = 6716)		Male (n = 5453)		Overall (N = 12169)		
	(n)	(%)	(n)	(%)	(n)	(%)	95% CI
18 – 27	387	5.76	249	4.57	636	5.23	4.84 – 5.64
28 – 37	924	13.76	522	9.57	1446	11.88	11.31 – 12.47
38 – 47	1797	26.76	1371	25.14	3168	26.03	25.26 – 26.82
48 – 57	1975	29.41	1675	30.72	3650	29.99	29.18 – 30.82
58 – 67	1041	15.50	1068	19.59	2109	17.33	16.66 – 18.02
68+	592	8.81	568	10.42	1160	9.53	9.02 – 10.07

Table 2. Costs associated with acute low back pain (n = 9212)

Outpatient care	18 – 27 (n = 606)		28 – 37 (n = 1148)		38 – 47 (n = 2502)		48 – 57 (n = 2671)		58 – 67 (n = 1354)		≥ 68 (n = 931)		Total counts (n = 9212)	Unit price (US\$)	Total price (US\$)
	F (n = 373)	M (n = 233)	F (n = 799)	M (n = 349)	F (n = 1492)	M (n = 1010)	F (n = 1545)	M (n = 1126)	F (n = 694)	M (n = 660)	F (n = 426)	M (n = 505)			
Visits	403	241	999	407	2520	1469	3699	2304	2247	1917	1543	1697	19446	5.19	100,924.74
Medication														82.53	760,294.08
NSAIDs	403	241	999	407	2520	1469	3699	2304	2247	1917	1543	1697	19446	32.24	626,939.04
Opioids	178	133	414	173	742	473	711	520	366	365	182	215	4472	29.82	133,355.04
Rehab	87	61	207	86	393	264	400	299	169	159	105	137	2367	20.76	49,138.92
Insoles	22	15	52	23	98	65	91	72	45	40	25	29	577	9.69	5,591.13
Total cost	22,411.55	14,398.40	54,539.25	22,401.10	125,558.34	75,200.02	168,841.38	108,650.04	98,963.82	86,326.05	65,603.78	73,055.14			<u>915,948.87</u>
Average cost/patient	60.08	61.80	68.26	64.19	84.15	74.46	109.28	96.49	142.60	130.80	154.00	144.66			<u>99.43</u>

Table 3. Costs associated with chronic low back pain (n = 2957)

Cost variable	Sub-category	18 – 27 (n = 30)		28 – 37 (n = 298)		38 – 47 (n= 666)		48 – 57 (n = 979)		58 – 67 (n = 755)		≥ 68 (n = 229)		Total counts 2957	Unit price (US\$)	Total price (US\$)
		F (n = 14)	M (n = 16)	F (n = 125)	M (n = 173)	F (n = 305)	M (n = 361)	F (n = 430)	M (n = 549)	F (n = 347)	M (n = 408)	F (n = 166)	M (n = 63)			
Inpatient															(702.33)	(2,076,792.28)
	Ward	27	38	52	119	398	444	449	822	482	621	383	169	4004	249.00	996,996.00
	ICU	-	-	17	36	89	109	207	275	199	308	196	113	1549	116.57	180,566.93
	Nursing care	-	-	-	-	93	106	172	181	139	191	73	10	965	899.68	868,191.20
	Terminal care	-	-	-	-	-	-	25	14	59	50	47	-	195	159.17	31,038.15
Outpatient															(402.49)	(1,190,149.62)
	Total visits	65	49	467	542	1546	1326	2190	2758	2688	3099	1236	384	16350	5.19	84,856.50
	Medication														(320.31)	(947,184.96)
	NSAIDs	65	49	467	542	1546	1326	2190	2758	2688	3099	1236	384	16350	32.24	527,124.00
	Opioids	21	19	191	280	583	667	840	1064	1354	1714	824	147	7704	29.82	229,733.28
	Antidepressants	-	-	-	65	585	487	891	1050	1049	1290	472	223	6112	31.14	190,327.68
	Rehabilitation	14	37	280	370	699	979	988	1551	758	1222	399	319	7616	20.76	158,108.16
Investigations															(282.23)	(831,595.40)
	Baseline bloods	4	5	41	58	102	121	142	191	131	151	62	24	1032	150.90	155,728.80
	X-Ray	14	16	123	172	303	359	427	547	348	408	166	61	2944	67.82	199,662.08
	MRI scan	4	4	34	41	109	116	141	180	134	122	80	18	983	484.44	476,204.52
Specialists															(109.53)	(323,880.63)
	Physician	14	16	119	169	273	328	382	488	302	350	120	10	2571	109.35	281,138.85
	Neurosurgeon	-	-	3	4	16	21	27	33	26	31	27	27	215	110.73	23,806.95
	Orthopaedic	-	-	4	1	16	13	20	28	19	27	19	24	171	110.73	18,934.83
Auxiliaries															(21.09)	(62,366.84)
	Foot insoles	1	2	10	20	22	35	50	93	50	59	34	22	398	9.69	3,856.62
	Crutches	-	-	4	-	76	71	144	123	102	132	50	6	708	16.26	11,512.08
	Wheelchairs	-	-	2	-	16	24	29	58	37	59	25	9	259	181.46	46,998.14
Total cost (\$)		15104,24	18177,13	89230,26	131676,36	427620,38	467921,14	623689,59	828323,19	622199,85	770653,46	368452,49	121736,68			4,484,784.77

Average cost	1,078.8 7	1,136.0 7	713.84	761.14	1,402.03	1,296.18	1,450.44	1,508.79	1,793.08	1,888.86	2,219.59	1,932.33	1,516.67
-------------------------	--------------	--------------	---------------	--------	----------	----------	-----------------	-----------------	----------	----------	----------	-----------------	-----------------

Table 4. Overall estimated cost low back pain in tertiary care (N = 12169)

Cost variable	Sub-category	Female (n=6716)	Males (n=5453)	Total counts	Unit cost (US\$)	Total cost (US\$)	Price Source
Inpatient care					170.66	(2,076,792.28)	
	Ward	1791	2213	4004	249.00	996,996.00	Private Hospital
	ICU	708	841	1549	116.57	180,566.93	Private Hospital
	Nursing care	477	488	965	899.68	868,191.20	Private Hospital
	Terminal care	131	64	195	159.17	31,038.15	Private Hospital
Outpatient care					172.61	(2,100,507.36)	
	Total visits	19603	16193	35796	5.19	185,781.24	Market Price
	<i>Medication</i>				140.31	1,707,479.04	
	NSAIDs	19603	16193	35796	32.24	1,154,063.04	Market Price
	Opioids	6406	5770	12176	29.82	363,088.32	Market Price
	Antidepressants	2997	3115	6112	31.14	190,327.68	Market Price
	Rehabilitation	4499	5484	9983	20.76	207,247.08	Market Price
Investigations					68.33	(831,595.40)	
	Baseline bloods	482	550	1032	150.90	155,728.80	Private Hospital
	X-Ray	1381	1563	2944	67.82	199,662.08	Private Hospital
	MRI scan	502	481	983	484.44	476,204.52	Private Hospital
Specialists					26.61	(323,880.63)	
	Physician	1210	1361	2571	109.35	281,138.85	Market Price
	Neurosurgeon	121	94	215	110.73	23,806.95	Market Price
	Orthopaedic	102	69	171	110.73	18,934.83	Market Price
Auxiliaries					5.58	(67,957.97)	
	Foot insoles	501	474	975	9.69	9,447.75	Market Price
	Crutches	377	331	708	16.26	11,512.08	Market Price
	Wheelchairs	111	148	259	181.46	46,998.14	Market Price
Total cost		2,687,697.38	2,713,036.26			5,400,733.64	
Average cost		400.19	497.53			443.81	

Note: average exchange rate for 2019; **ZAR14.4496 : US\$1.00**

Table 5. Outpatient costs comparison between acute and chronic LBP

Outpatient	Acute LBP		CLBP	
	n = 9212 (75.70%)		n = 2957 (24.30%)	
	Average total cost	% of Total costs	Average total cost	% of Total costs
Total visits	100,924.74	1.8	84,856.50	1.5
Medication	760,294.08	13.6	920,346.96	16.5
NSAIDs	626,939.04	11.2	527,124.00	9.4
Opioids	133,355.04	2.4	202,895.28	3.6
Antidepressants	-	-	190,327.68	3.4
Rehabilitation	49,138.92	0.9	158,108.16	2.8
Insoles	5,581.44	0.1	3,856.62	0.1
Total Cost	915,939.54	16.4	1,009,060.08	18.0

medRxiv preprint doi: <https://doi.org/10.1101/2022.01.19.22269428>; this version posted January 21, 2022. The copyright holder for this preprint (which was not certified by peer review) is the author/funder, who has granted medRxiv a license to display the preprint in perpetuity. It is made available under a CC-BY 4.0 International license .

Table 6. Per-Patient Average Total Cost for Acute and Chronic LBP

Age	Acute LBP	Chronic LBP
	<i>Annual Per-Patient Average Total Cost</i>	<i>Annual Per-Patient Average Total Cost</i>
18 – 27	60.92	1,107.29
28 – 37	66.23	737.05
38 – 47	79.31	1,349.11
48 – 57	102.89	1,822.25
58 – 67	136.70	1,840.97
68+	149.33	2,072.82
Mean	99.43	1,507.42

medRxiv preprint doi: <https://doi.org/10.1101/2022.01.19.22269428>; this version posted January 21, 2022. The copyright holder for this preprint (which was not certified by peer review) is the author/funder, who has granted medRxiv a license to display the preprint in perpetuity. It is made available under a [CC-BY 4.0 International license](#).

Primary Health Care
(level 1 health care access)

PHC, Clinics, CHC

District Hospitals

General Practitioners

Emergency Rescue

Regional Hospital
(level 2 health care access)

Regional Hospital
(registration)

Vital Observation
(nurse/nurse aid)

Referrals within the hospital to:

Casualty Officer
(Medical officer)

Prescription Meds

Outpatient
(Review)

Specialists

Physician

Neurosurgeon

Orthopaedic
Surgeon

Special tests
Laboratory work
Imaging studies

Admission ↔ Special tests

Admission ↔ Special tests

Admission ↔ Special tests

Discharge Plan

Ward ICU

Ward ICU

Ward ICU

Outpatient Terminal care Nursing care

Outpatient Terminal care Nursing care

Outpatient Terminal care Nursing care

Figure 1

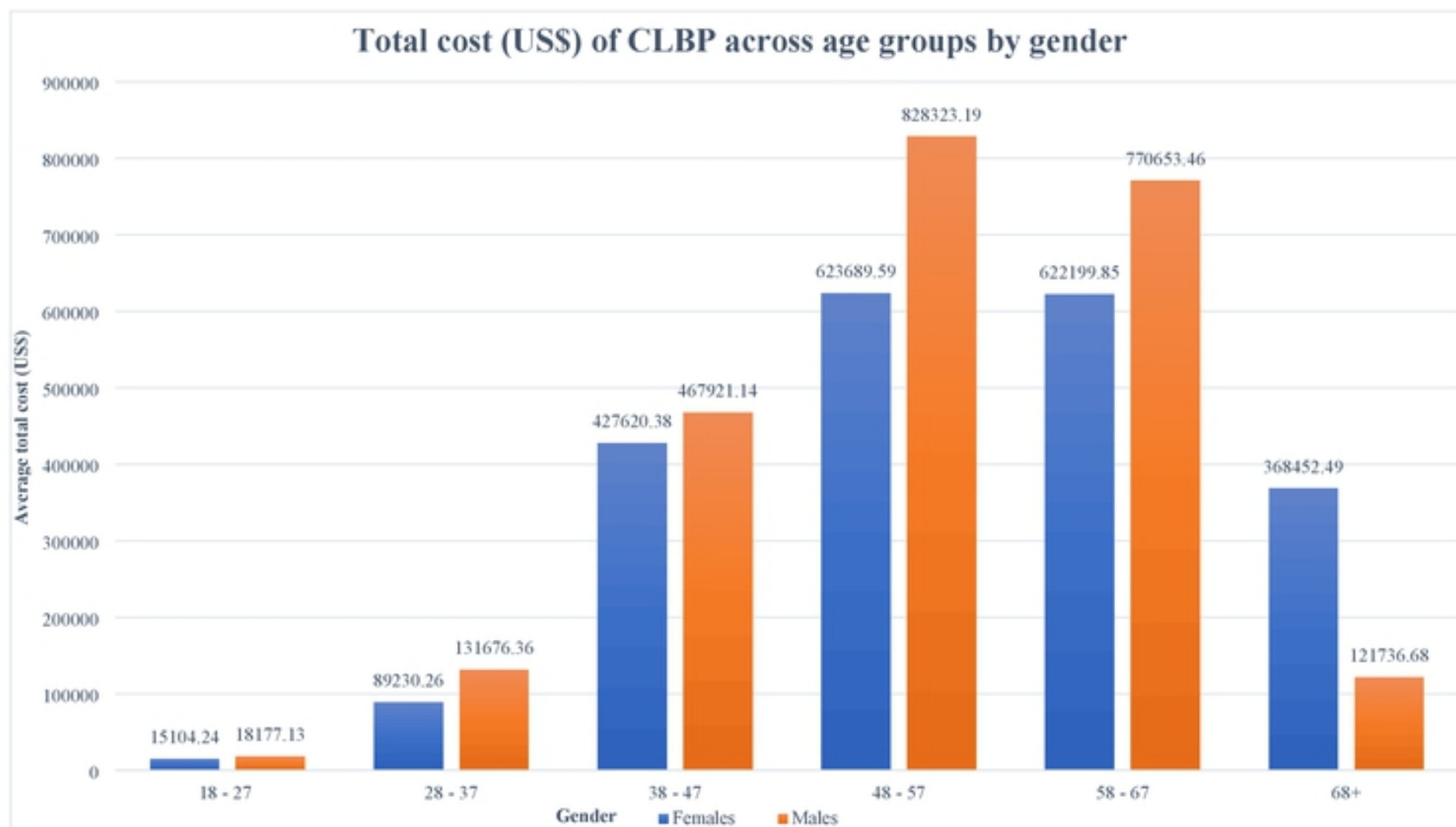


Figure 2