

# 1 Parapneumonic effusions related to *Streptococcus pneumoniae*: serotype and disease 2 severity trends

3 Catherine Hyams<sup>1,2</sup>, David T Arnold<sup>1</sup>, Robyn Heath<sup>2</sup>, Zahin Amin-Chowdhury<sup>5</sup>, David  
4 Hettle<sup>3,4</sup>, Gabriella Ruffino<sup>1</sup>, Paul North<sup>3,4</sup>, Charlotte Grimes<sup>1</sup>, Norman K Fry<sup>5</sup>, Philip  
5 Williams<sup>3,4</sup>, Leon Danon<sup>6</sup>, O Martin Williams<sup>3,4</sup>, Shamez Ladhani<sup>5</sup>, Adam Finn<sup>6</sup>, Nick A  
6 Maskell<sup>1</sup>

7  
8 <sup>1</sup> Academic Respiratory Unit, Learning and Research, Southmead Hospital, Bristol BS10  
9 5NB, United Kingdom

10 <sup>2</sup> Vaccine and Testing Research Team, Clinical Research Facility, St Michael's Hill, Bristol  
11 Royal Infirmary, Bristol, United Kingdom

12 <sup>3</sup> Microbiology Services Bristol, Bristol Royal Infirmary, Bristol, United Kingdom

13 <sup>4</sup> Department of Microbiology, University Hospitals Bristol NHS Foundation Trust, Bristol  
14 Royal Infirmary, Bristol, UK, BS2 8HW

15 <sup>5</sup> National Infection Service, UKHSA, London, United Kingdom

16 <sup>6</sup> Engineering Mathematics, University of Bristol, Bristol, United Kingdom

17 <sup>7</sup> Bristol Vaccine Centre, Schools of Cellular and Molecular Medicine and of Population  
18 Health Sciences, University of Bristol, Bristol, BS2 8AE, United Kingdom  
19

20 **Corresponding address:** Dr Catherine Hyams, MBBS BSc(Hons) PhD MRCP  
21 Academic Respiratory Unit,  
22 Learning & Research Building,  
23 Southmead Hospital, Bristol,  
24 BS10 5NB  
25 catherine.hyams@bristol.ac.uk

26 **Keywords:** *Streptococcus pneumoniae*, pneumococcus, respiratory  
27 infection, pleural disease, serotypes

28 **Take home message:** Pneumococcal parapneumonic effusions show increasing  
29 incidence despite PCV introduction, with serotype 1 and 3  
30 persisting and increase in non-PCV13 disease. Pleural infection  
31 showed lower mortality than SPE, and baseline RAPID score  
32 predicted 90-day mortality.  
33

## 34 ABSTRACT

### 35 Introduction

36 *Streptococcus pneumoniae* epidemiology is changing in response to vaccination and some  
37 data suggest empyema incidence is increasing. However, differences exist between UK and  
38 USA studies. We describe trends in the clinical phenotype of adult pneumococcal pleural  
39 infection, including simple parapneumonic effusions (SPE) in the pneumococcal conjugate  
40 vaccination (PCV) era.

### 41 Methods

42 Retrospective cohort study, all adults  $\geq 16$  years admitted to three large UK hospitals, 2006-  
43 2018 with pneumococcal disease. Medical records were reviewed for each clinical episode.  
44 Serotype data were obtained from the UKHSA national reference laboratory.

### 45 Results

46 2477 invasive pneumococcal cases were identified: 459 SPE and 100 pleural infection cases.  
47 Incidence increased over time, including non-PCV-serotype disease. PCV7-serotype disease  
48 declined following paediatric PCV7 introduction, but the effect of PCV13 was less apparent  
49 as disease caused by the additional six serotypes plateaued with serotypes 1 and 3 causing  
50 such parapneumonic effusions from 2011 onwards.

51 Mortality was lower in pleural infection patients than SPE patients. Patients with frank pus  
52 had lower mortality than those without. 90-day mortality could be predicted by baseline  
53 increased RAPID score.

### 54 Conclusion

55 Pneumococcal infection continues to cause severe disease despite the introduction of PCVs.  
56 The predominance of serotype 1 and 3 in this adult UK cohort is in keeping with previous

57 studies in paediatric and non-UK studies. Rising non-PCV serotype disease and limited  
58 impact of PCV13 on cases caused by serotypes 1 and 3 offset the reductions in adult  
59 pneumococcal parapneumonic effusion disease burden observed following introduction of the  
60 childhood PCV7 programme.

61

## 62 INTRODUCTION

63 *Streptococcus pneumoniae* remains the leading bacterial cause of community-acquired  
64 pneumonia (CAP), despite vaccine deployment. A dose of PneumoVax® (unconjugated 23-  
65 valent polysaccharide vaccine, PPV23) is offered to all adults from age 65 years in the UK  
66 and  $\geq 2$ -year-olds with at least one clinical risk factor for pneumococcal disease also receive  
67 this vaccine [1]. The 7-valent pneumococcal conjugate vaccine (PCV) (PCV7) was  
68 introduced into the UK childhood vaccination programme in 2006 on a 2 priming dose  
69 schedule with a booster following the first birthday (2+1) and subsequently replaced in April  
70 2010 with a 13-valent PCV (PCV13). The schedule was modified to 1+1 in 2020. Several  
71 USA studies have shown that PCV introduction resulted in a significant reduction in both  
72 carriage and invasive pneumococcal disease (IPD) due to vaccine serotypes, especially in  
73 children [2, 3] although an increase in pneumococcal empyema cases in children has been  
74 reported [4] and the effect of paediatric PCV deployment on adult disease phenotype is  
75 debated [5]. By 2016/17, UK surveillance demonstrated that PCV7 serotype disease in  
76 children had virtually disappeared, with significant reduction in PCV7 disease burden in  
77 adults. In contrast, while PCV13 serotype disease incidence has not disappeared across all  
78 age groups, but plateaued, with a remaining residual incidence of 7.97 per 100,000 across all  
79 age groups. There has also been an increase in disease attributable to non-PCV13 serotypes,  
80 especially in the elderly, which has reduced overall disease reduction resulting from vaccine  
81 introduction [6-8]. Evidence from a large pneumococcal pneumonia patient cohort in  
82 Nottingham, UK suggests that, aside from age, residential care status and some  
83 comorbidities, there are relatively few differences between patients with disease caused by  
84 PCV13 and those with non-PCV13 serotype infections [9].

85

86 Approximately 15-20% hospitalised pneumococcal CAP cases are associated with a pleural  
87 effusion [10, 11] and 6% with empyema [10, 12]. However, recent evidence suggests that  
88 incidence of pneumococcal empyema has increased following paediatric PCV deployment,  
89 especially in adults aged >65 years, possibly due to serotype 1 emergence [13]. Thus,  
90 vaccine-driven serotype replacement may be leading to changes in pneumococcal disease  
91 phenotype and severity. This is a concern as morbidity and mortality associated with simple  
92 parapneumonic effusion (SPE) are higher than with uncomplicated pneumonia [14].

93

94 Here we present the largest cohort of patients with a single-organism pleural infection,  
95 encompassing SPE and pleural infection (complex parapneumonic effusion (CPE) or  
96 empyema) attributable to pneumococcus, in a single-centre observational study covering  
97 thirteen years during which PCVs were introduced into the UK paediatric vaccination  
98 programme. We sought to determine whether there were any differences in pneumococcal  
99 disease presentation and severity associated with empyema, given concerns surrounding  
100 changing pneumococcal serotype distribution.

## MATERIALS AND METHODS

### Study Subjects

Patients aged  $\geq 16$  years admitted to all three hospitals providing emergency care in Bristol and Bath (University Hospitals Bristol and Weston, North Bristol and The Royal United Hospital NHS Trusts) between January 2006 and December 2018, with a confirmed microbiological diagnosis of pneumococcal infection were eligible for this study. This study was approved by the Health Research Authority, UK (IRAS 265437).

### Study Design

A retrospective cohort study at three large NHS hospitals in the UK.

### Methods

Study-eligible cases were identified retrospectively by searching the Laboratory Information Management System (LIMS) database (Clinisys WinPath Enterprise). *S. pneumoniae* was confirmed on culture from blood at a central laboratory using standard microbiological techniques outlined in UK standards for microbiology investigations combined with API®-20 Strep (BioMérieux, UK) or MALDI-TOF (matrix-assisted laser desorption/ionisation/time of flight) mass spectrometry (Bruker, UK) [15]. A positive pneumococcal urinary-antigen test (BinaxNOW®, Alere, UK) was also considered confirmative of pneumococcal infection. Confirmed cases were linked with the UK Health Security Agency (UKHSA) national reference laboratory to obtain serotype data [16] which were collected separately from clinical data to avoid any risk of bias in data collection. Pneumococcal serotypes were

grouped by PCV (PCV7; PCV13-7 representing the additional 6 serotypes in PCV13; and PCV13) or as non-PCV (Supplementary Data 1).

Patients with pneumococcal infection and a pleural effusion on radiology were either classified as: (1) pleural infection (empyema/CPE): if fluid was pus and/or bacterial culture positive, and/or there was an effusion relating to pneumonia and requiring definitive drainage (e.g. intercostal catheter insertion or thoracic surgery), and/or there was an exudative effusion with pH  $\leq 7.2$ ; or as, (2) SPE: an exudative effusion not classified as either an empyema or CPE in a patient with a clinical and/or radiological diagnosis of pneumonia.

Patients' clinical records were reviewed at each hospital and data, including clinical outcomes, recorded. The vaccination status of each patient was established from electronically linked GP records [15]. The CURB65 severity score on admission was calculated for each clinical episode [17]. Patients with pleural infection had a RAPID (Renal, Age, Purulence, Infection source, and Dietary factors) score calculated [18], which has been validated to stratify adults with pleural infection according to increasing risk of mortality [19].

## Analysis

Patient data are reported as medians and interquartile ranges (IQR) for continuous variables. Categorical variables are presented as counts and percentages. Baseline characteristics and comorbid risk factors for SPE and pleural infection were compared using Fisher's exact tests for categorical variables, and the Mann-Whitney U-test for non-parametric continuous

146 variables. The Kaplan–Meier method and Cox proportional hazard regression model were  
147 used for calculation of survival over time, while survival differences were analyzed using the  
148 log-rank test. Statistical analysis was performed using SPSS, version 28.0 (New York, IBM).  
149 Graphs were generated in GraphPad PRISM, version 9.0.



## RESULTS

2657 IPD episodes were identified, of which 2447 were respiratory infections: 1888 pneumonia cases, 459 SPE and 100 cases of pleural infection (Figure 1). 283/559 (51%) cases with parapneumonic effusion had *S. pneumoniae* confirmed on blood culture. In total, 282/559 (50%) were male with a median age of 68y (IQR 50-78) (Table 1, Supplementary Data 2). Pre-existing cardiac and respiratory disease was common in patients with parapneumonic effusions. Patients with pleural infection were younger than those with SPE (median ages 55 vs 69y respectively,  $P<0.001$ ), and were more likely to have history of alcohol misuse and/or intravenous drug usage ( $P<0.05$ ) and less likely to develop acute renal failure ( $P<0.05$ ). On presentation to hospital, neither clinical observations nor CURB65 score differed significantly between patients with SPE and pleural infection ( $P>0.05$ ); in contrast, patients with pleural infection had both a significantly greater neutrophilia ( $P<0.01$ ) and more elevated CRP levels ( $P<0.001$ ) (Table 1, Supplementary Data 2 and 3).

Annual incidence of *S. pneumoniae* parapneumonic effusions increased throughout the study period (Figure 2A). There was a 33% and 34% increase in unplanned hospital admissions and microbiological testing between 2006 and 2018 (Supplementary Data 4, indicating relative increase in hospital workload was not equivalent to the increase in disease incidence. The age of patients admitted throughout the study did not show any apparent trend (Supplementary Data 5). In 38% cases serotype was available, of which overall 52% were attributable to a PCV13 serotype while only 8% were caused by a non-vaccine serotype. Over the study period, there was an absolute and proportional decrease in disease caused by PCV7 serotypes. All parapneumonic effusions caused by a PCV7 serotype after 2011 were SPE (serotypes 14 and 19F), with no pleural infections caused by a PCV7 serotype after 2011. PCV13-7 disease showed an initial rise, followed by a fall after PCV13 introduction with a gradual rise in

disease over the last 5 study years (Figure 2B). Following the introduction of PCV13 in 2010, the only PCV13-7 serotypes that caused pneumococcal pleural infections were 1 and 3: 2 (17% of serotype known disease) and 3 (25%) pre-2010 pleural infection cases versus 9 (30%) and 7 (23%) post-2010 pleural infection cases due to serotype 1 and 3 respectively. Serotype 1 affected younger patients and was associated with a different RAPID severity group distribution than seen in patients with serotype 3 parapneumonic effusions (Table 2).

Overall, 19% patients with pneumococcal parapneumonic effusions died within 90-days of presentation (Table 1, Supplementary Table 6). Patients with pleural infections had higher survival rates than those with SPE at 30-, 90- and 365-days ( $P<0.01$ ) (Figure 3A). Median survival was 468 days (340-590 days, 95% CI) in patients with pleural infection, vs 286 (274-335 days, 95% CI) in those with SPE. In total, 59/100 (59%) pleural infection patients had pus and these patients had improved 30-, 90-, and 365-day mortality compared to those without pus; in contrast, loculation was associated with reduced 30-, 90- and 365-day mortality (Table 4). Surgical management was associated with improved prognosis: no deaths occurred within 1-year of presentation compared to 24% mortality in patients with pleural infection who did not undergo surgery. Patients undergoing thoracic surgery were younger than those who did not (median age 45 years, IQR40-52 versus 66 years, IQR 53-78).

The mortality rate among patients with pleural infection increased alongside RAPID score severity at 30-, 90- and 365-days (Figure 3B, Table 3), and a high RAPID score was associated with a median survival of 56 days (20-154 days, 95% CI). Proportional hazards regression analysis confirmed that more severe RAPID group was associated with increased 90-day ( $P=0.046$ , 95% CI 1.02-16.54) and 365-day mortality ( $P=0.012$ , 95% CI 1.29-7.79) (Table 4).

## DISCUSSION

This observational cohort study, with data from a 13-year period spanning PCV introduction into the UK childhood vaccination programme, shows an increasing incidence of adult pneumococcal parapneumonic effusions. An increasing incidence of pneumococcal disease has also been reported by other UK studies [9, 16, 20, 21], with Pick *et al* reporting incidence of pneumococcal pneumonia of 32.2 and 48.2 per 100,000 population in 2013 and 2018 respectively [9]. Using previously published estimates that up to 20% of adults hospitalised with pneumococcal pneumonia develop a pleural effusion [10, 11], estimates of parapneumonic effusion incidence from that study would be 6.4 and 9.6 in 2013 and 2018, which are similar to the incidence rates of 5.0 and 9.8 observed in the same years in this study. Recent national epidemiological studies of pleural infection from North America also show significant increases in pleural infection rates both in children [22] and adults [23]. Likewise, a Danish study from 1997-2001, showed steadily rising pleural infection rates in the elderly [24] and a UK study showed annual rises in adult pleural infections from 2008-17 [25], most marked in over 60-year-old individuals with a 194% increase over the decade. Both overall admissions and microbiological testing at the study hospitals increased progressively during our study period, but not as much as disease incidence, suggesting this did not solely account for the increasing incidence observed. Whilst the study period encompassed a time when the UK vaccination programme changed, there was also an expanding total and older adult population in Bath and Bristol. Furthermore, there may have been changes in patient or physician treatment preferences, including threshold for referral to secondary care, diagnostic testing and treatment which may have impacted the incidence of disease estimated throughout this study [26].

The introduction of PCV7 into the UK childhood vaccination programme in 2006 was followed by a decrease in adult pneumococcal pleural effusions attributable to PCV7 vaccine serotypes in this study. Notably, all parapneumonic effusions due to PCV7 serotypes after 2011 were SPE and due to serotypes 14 and 19F, with no cases of pleural infection. However, PCV13 introduction in 2010 did not result in such a marked indirect reduction in disease caused by the additional six serotypes in PCV13 due to the persistence of serotype 1 or 3 disease. This partially aligns with national serotype trends, showing reductions in both PCV7 serotype and serotype 1 adult IPD incidence [6], and both serotypes are prevalent in studies of pleural infection in children [27]. In the UK, large reductions in vaccine-serotype adult IPD were offset by increases in non-PCV13 IPD [6, 16, 20], a trend also apparent in this patient cohort, with non-PCV13 disease increasing from 30% to 60% of known serotype disease. Pick *et al* showed an increase in non-PCV13 serotype pneumococcal pneumonia from 2014/15 onwards [9] as well as an overall increase in PCV13-7 serotype disease, in contrast to trends reported in this study. These are the first data on serotype trends in adult pneumococcal pleural disease since paediatric PCV introduction in the UK.

Serotype affects pneumococcal resistance to innate immunity, duration of nasopharyngeal colonisation, the number of episodes of invasive disease per colonisation event, mortality and disease severity [28-30]. The two PCV13-7 serotypes which continued to cause pneumococcal pleural infection following PCV13 introduction are notable serotypes as they have unusual polysaccharide capsules. Serotype 1 expresses a zwitterionic and structurally diverse polysaccharide capsule, which uniquely may act as a T-cell dependent antigen [31]. This serotype rarely causes asymptomatic nasopharyngeal colonization but is a commonly isolated in IPD [28], and frequently causes invasive pneumonia [32]. Studies suggests serotype 1 is more likely to be identified in young patients, and in some studies it is the most

frequent cause of pneumococcal pleural infection, with increasing empyema incidence attributable to this serotype [11, 13]. In contrast, the serotype 3 polysaccharide capsule is large, resulting in a highly mucoid appearance, and is one of a few capsules produced by synthase-mediated synthesis [33]. Serotype 3 also causes considerable disease burden [11, 27] being the most common overall cause of pneumonia in the USA [34], is highly invasive [28] and is associated with increased mortality [29]. Distinct lineages exist within serotype 3 clonal complex 180, and recent clade distributions shift has led to the emergence and expansion of clade II [35, 36], which now represents 50% serotype 3 IPD in the UK [37]. We could not determine serotype 3 clade grouping in this analysis, but clade II emergence may, at least in part, explain serotype 3 disease persistence.

Overall, pre-existing medical conditions were commonly present amongst adults with pneumococcal parapneumonic effusions, although the median patient age was lower than that seen in other cohorts of parapneumonic effusions [12, 25]. Uniquely, this cohort of parapneumonic effusion cases were all attributable to pneumococcal infection, which may cause the condition in younger patients than other pathogens [25, 38]. Despite this, the burden of pre-existing medical comorbidity was equivalent: both SPE and pleural infection patients had significant cardiac (44%) and respiratory (43%) conditions predominating. A large systematic review found that 72% of patients with pleural infection had at least one significant comorbidity, with high levels of pre-existing cardiac (19%) and respiratory (20%) diseases [38]. Excessive alcohol consumption was significantly more common among pleural infection cases, in line with other published cohort studies [14]. Alcohol abuse may predispose to the development of pleural infection through its general immunosuppressive effect in addition to associated increases in risk of aspiration and delayed presentation to medical services [12].

274

275 As shown in the initial validation and subsequent cohort studies of the RAPID score [18, 19],  
 276 a high score was strongly associated with the risk of mortality by 3-months. Study patients in  
 277 the low-risk group had a 3% (95% C.I 0.7 to 15%) risk of 90-day mortality compared to 57%  
 278 (95% C.I. 28% to 82%  $P<0.01$ ), for those with a high risk score, while there was much less  
 279 difference in survival between those in low and medium RAPID groups, as reported by others  
 280 [19, 39]. There was a positive association between pleural fluid purulence and survival: this  
 281 relationship has been demonstrated in cohorts that were not restricted by causative organism,  
 282 suggesting it is disease and not pathogen specific [18]. Anecdotal report findings suggest  
 283 effusions comprised of frank pus tend to be non-loculated and therefore more readily drained.

284

285 This study identified patients with pneumococcal infection and parapneumonic effusions  
 286 within a defined geographical area, covering a population of approximately one million  
 287 adults, and encompassed 3 large hospitals with 100,000 unplanned adult admissions annually.  
 288 One of these hospitals is the regional thoracic surgery centre, whilst another has a specialist  
 289 pleural disease service, possibly increasing the accuracy of the clinical data presented here.  
 290 We captured disease and serotype trends over 13 years, spanning PCV introduction. By  
 291 linking with the UKHSA national reference laboratory we were able to report serotype where  
 292 it was available. Importantly, the epidemiological data were supported with detailed clinical  
 293 information for individual patients, including short- and long-term outcomes. However, this  
 294 study also has limitations. This is a retrospective observational study; therefore, only  
 295 information documented in clinical records could be included and patients were managed at  
 296 the discretion of individual physicians. As a regional study, the findings here may not be  
 297 representative of other populations; although, our serotype trends are comparable to other UK

national and regional reports. We included patients who tested positive for pneumococcus using the BinaxNOW® urinary antigen test, which has a known sensitivity of 65% and prolonged positive test result after exposure to pneumococcus [40]. Lastly, different methodologies were used to identify pneumococcal serotypes during the study period; whole genomic sequencing was only routinely used by UKHSA from October 2017, and therefore earlier isolates did not have this performed.

Overall, we found an increasing incidence of pneumococcal parapneumonic effusion in Bristol and Bath, UK. The proportion of disease attributable to PCV7 serotypes fell after 2006, when the PCV7 vaccine was introduced into the UK childhood vaccination programme; importantly, no cases of PCV7 pleural infection occurred in adults after 2011. However, disease attributable serotypes 1 and 3 did not show decline following PCV13 vaccine rollout. Further research is needed to determine if *S. pneumoniae* serotype is predictive of mortality risk in adults with pneumococcal parapneumonic effusions.

## ACKNOWLEDGEMENTS

The authors would like to acknowledge the research teams at The Royal United, North Bristol and University Hospitals of Bristol and Weston NHS Trusts.

## COMPETING INTERESTS

CH is Principal Investigator of the AvonCAP study which is an investigator-led University of Bristol study funded by Pfizer. AF is a member of the Joint Committee on Vaccination and Immunization (JCVI) and chair of the World Health Organization European Technical Advisory Group of Experts on Immunization (ETAGE) committee. In addition to receiving funding from Pfizer as Chief Investigator of this study, he leads another project investigating transmission of respiratory bacteria in families jointly funded by Pfizer and the Gates Foundation. The other authors have no relevant conflicts of interest to declare.

## CONTRIBUTORSHIP STATEMENT

CH, DA, AF, OMW and NM generated the research questions and analysis plan. CH, RH, DH, GF, DA, PN, PW, ZAC collected data. CH and DH verified the data. CH, DA, RH, AF and NM undertook the data analysis. AF, OMW and NM provided oversight of the research. All authors contributed to the preparation of the manuscript and its revision for publication and had responsibility for the decision to publish.

## FUNDING

CH was funded by the National Institute for Health Research [NIHR Academic Clinical Fellowship (ACF-2015-25-002)]. DTA was funded by an NIHR Doctoral Research



Fellowship (DRF-2018-11-ST2-065). The views expressed are those of the author(s) and not necessarily those of the NIHR or the Department of Health and Social Care.

## **DATA SHARING**

The data used in this study are sensitive and cannot be made publicly available without breaching patient confidentiality rules. Therefore, individual participant data and a data dictionary is not available to other researchers.

# 344 TABLES

345 **Table 1: Clinical features of patients with pneumococcal parapneumonic effusions**

Characteristic	All parapneumonic effusions (N=559)	SPE (N=459)	Pleural infection (N=100)	P value *
<b>Microbiological Confirmation of IPD - N (%)</b>				
Blood culture	283 (51)	236 (51)	47 (47)	0.469
Urinary antigen test	276 (49)	223 (49)	55 (55)	0.277
<b>Pleural Fluid Culture Results</b>				
<i>S. pneumoniae</i> positive	42 (8)	0 (0)	42 (42)	<0.001
Multi-organism positive	15 (3)	0 (0)	15 (15)	<0.001
<b>Demographics</b>				
Male – N (%)	282 (50)	223 (49)	56 (56)	0.205
Female – N (%)	277 (50)	236 (51)	44 (44)	0.205
Age (years) – median (IQR)	68 (50-78)	69 (57-78)	55 (45-74)	<0.001
<b>Smoking Status - N (%)</b>				
Non-smoker	127 (23)	106 (23)	21 (21)	0.732
Current smoker	196 (35)	148 (32)	46 (46)	0.043
Ex-smoker	238 (43)	205 (45)	33 (33)	0.043
<b>Comorbidities – N (%)</b>				
Chronic Lung Disease	245 (44)	201 (43)	44 (44)	0.856
Cardiac Disease	304 (54)	261 (57)	43 (43)	<b>0.011</b>
Upper GI/Swallow Problem	214 (38)	180 (40)	34 (34)	0.265
Cerebrovascular Disease	39 (7)	29 (6)	10 (10)	0.148
Type 2 Diabetes	95 (17)	79 (17)	16 (16)	0.809
Chronic Liver Failure	25 (4)	21 (5)	4 (4)	0.672
Intravenous Drug Usage	24 (4)	17 (4)	7 (7)	0.192
Alcohol excess	53 (9)	38 (8)	15 (15)	<b>0.028</b>
BMI ≤17 or BMI ≥ 35	23 (4)	16 (3)	7 (7)	0.056
<b>CURB65 Score on Admission</b>				
0 N (%)	28 (5)	20 (4)	8 (8)	0.088
1 N (%)	107 (19)	83 (18)	24 (24)	0.167
2 N (%)	139 (25)	112 (24)	27 (27)	0.528
3-5 N (%)	285 (51)	244 (53)	42 (42)	<b>0.046</b>
<b>Investigation Results – median (IQR)</b>				
White cell count, ×10 <sup>9</sup> /L	17.8 (12.1-23.8)	17.0 (12.0-22.7)	20.8 (13.9-27.0)	<b>0.005</b>
Neutrophil count, ×10 <sup>9</sup> /L	14.9 (10.0-20.2)	14.2 (9.9-20.1)	18.5 (10.8-24.1)	<b>0.003</b>
C-reactive protein, mg/dL	215 (133-341)	200 (129-312)	331 (213-412)	<0.001
Albumin, g/L	30 (26-36)	31 (27-36)	29 (23-34.3)	0.666
Urea, mmol/L	9.3 (6.4-13.2)	9.2 (6.5-13.3)	9.7 (6.1-12.8)	0.666
<b>Outcomes - N (%)</b>				
Acute renal failure †	198 (35)	170 (37)	28 (28)	0.088
Liver dysfunction #	60 (11)	55 (12)	5 (5)	<b>0.041</b>
ITU admission	110 (20)	92 (20)	18 (18)	0.649
Increased care needed	198 (35)	176 (38)	22 (22)	<b>0.002</b>
Admission days – median (IQR)	11 (6-20)	10 (5-20)	14 (10-21)	<0.001
<b>Mortality</b>				
- Inpatient mortality	71 (13)	60 (13)	11 (11)	0.586
- 30-day mortality	74 (13)	65 (14)	9 (9)	0.180
- 90-day mortality	106 (19)	94 (21)	12 (12)	<b>0.039</b>

- 1-year mortality	150 (26)	134 (29)	16 (16)	<b>0.008</b>
--------------------	----------	----------	---------	--------------

346

347 \* *P*-values represent the result of comparison between SPE and pleural infection groups with  
 348 either Fisher's exact test (categorical variables) or the Mann-Whitney U-test (non-parametric  
 349 continuous variables)

350 † Acute renal failure was defined as a reduction in renal function (as measured by creatinine  
 351 or eGFR), oliguria (<400ml urine per 24h) or clinical diagnosis of acute kidney injury

352 # Liver dysfunction was defined as a transient disorder of hepatic function characterized by  
 353 either liver enzymes, or clinical diagnosis of acute liver dysfunction. Other features of acute  
 354 liver failure may or may not be present, including jaundice, vomiting, coagulopathy,  
 355 hyperbilirubinemia, and increased serum lactate

356

**Table 2: Clinical features of patients with serotype 1 and 3 pneumococcal parapneumonic effusions**

Characteristic	Serotype 1 N = 22	Serotype 3 N = 30	P value
<b>Demographics – N (%)</b>			
Male	13 (59)	16 (53)	0.181
Smoking			
- Current	11 (50)	11 (37)	0.353
- Ex-Smoker	5 (23)	12 (40)	0.201
<b>Age – median (IQR)</b>			
Age (years)	45 (40-69)	75 (62-83)	<b>0.023</b>
<b>Comorbidities – N (%)</b>			
Chronic Lung Disease	10 (46)	12 (40)	0.669
Cardiac Disease	9 (41)	21 (70)	<b>0.038</b>
Upper GI/Swallow Problem	3 (14)	13 (43)	<b>0.027</b>
Cerebrovascular Disease	3 (14)	5 (17)	0.771
Type 2 Diabetes	3 (14)	7 (23)	0.420
Chronic Liver Failure	0 (0)	2 (7)	0.210
Intravenous Drug Usage	1 (5)	1 (3)	0.714
Alcohol excess	2 (9)	4 (13)	0.656
<b>Pleural Features – N (%)</b>			
Pleural Infection	11 (50)	10 (33)	0.221
Loculation	5 (23)	3 (10)	0.205
Pus	4 (18)	6 (20)	0.858
RAPID Group			
- Low	10 (45)	4 (13)	<b>0.011</b>
- Medium	1 (5)	20 (67)	<b>&lt;0.001</b>
- High	9 (41)	3 (13)	<b>0.024</b>
<b>Outcomes – N (%)</b>			
Acute renal failure †	9 (41)	23 (78)	<b>0.007</b>
Liver dysfunction #	2 (9)	1 (3)	0.355
ITU admission	4 (18)	6 (20)	0.858
Increased care needed	6 (27)	10 (33)	0.646
<b>30-day mortality</b>	2 (9)	6 (20)	0.282
<b>90-day mortality</b>	3 (14)	11 (37)	0.068
365-day mortality	3 (14)	14 (47)	<b>0.019</b>
Admission days – median (IQR)	11 (5-21)	10 (4-18)	0.368

† Acute renal failure was defined as a reduction in renal function (measured by creatinine or eGFR), oliguria (<400ml urine per 24h) or clinical diagnosis of acute kidney injury

# Liver dysfunction was defined as a transient disorder of hepatic function characterized by either liver enzymes, or clinical diagnosis of acute liver dysfunction. Other features of acute liver failure may or may not be present.

**Table 3: Mortality among 100 Pneumococcal Pleural Infection cases with different clinical features and RAPID severity Scores**

Characteristic	Pleural Infection			
	Total Patients (N=100)	30 Day Mortality N (%)	90 Day Mortality N (%)	365 Day Mortality N (%)
<b>Disease Characteristics</b>				
Pus	59	0 (0)	0 (0)	1 (2)
No Pus	41	9 (22)	12 (29)	12 (29)
Loculation Present	49	8 (16)	10 (20)	12 (25)
No loculation Detected	51	1 (2)	2 (4)	5 (10)
Fibrinolytics used	33	4 (12)	6 (18)	11 (33)
Surgical Management	29	0 (0)	0 (0)	0 (0)
- Loculation present	23	0 (0)	0 (0)	0 (0)
- No loculation	6	0 (0)	0 (0)	0 (0)
No Surgical Management	71	9 (13)	12 (17)	17 (24)
<b>RAPID Risk Group</b>				
Low	36	1 (3)	1 (3)	3 (8)
Medium	46	2 (4)	3 (7)	4 (9)
High	18	6 (33)	10 (55)	13 (72)

RAPID (Renal, Age, Purulence, Infection source, and Dietary factors) Score 0-2 represents low risk, 3-4 medium risk and 5-7 high risk

371 **Table 4: Cox Regression Analysis for risk factors in patients with pleural infection**

Analysis	Factor	Wald	HR	P-value	95% CI
<b>30-day mortality</b>	Age	0.167	0.99	0.683	0.95-1.03
	Loculation	2.214	2.86	0.181	0.52-33.2
	RAPID Group	1.790	4.15	0.137	0.72-11.37
<b>90-day mortality</b>	Age	0.092	0.99	0.761	0.956-1.03
	Loculation	3.965	2.92	0.172	0.63-13.53
	RAPID Group	1.865	4.11	0.046	1.02-16.54
<b>365-day mortality</b>	Age	0.167	0.99	0.713	0.96-1.03
	Loculation	2.214	1.44	0.505	0.50-4.16
	RAPID Group	1.790	3.17	0.012	1.29-7.79

372

373

## REFERENCES

1. UKHSA. Pneumococcal: the Green book. 2020; pp. 1-13.
2. Whitney CG, Farley MM, Hadler J, Harrison LH, Bennett NM, Lynfield R, Reingold A, Cieslak PR, Pilishvili T, Jackson D, Facklam RR, Jorgensen JH, Schuchat A. Decline in Invasive Pneumococcal Disease after the Introduction of Protein–Polysaccharide Conjugate Vaccine. *New England Journal of Medicine* 2003; 348(18): 1737-1746.
3. Harboe ZB, Dalby T, Weinberger DM, Benfield T, Mølbak K, Slotved HC, Suppli CH, Konradsen HB, Valentiner-Branth P. Impact of 13-Valent Pneumococcal Conjugate Vaccination in Invasive Pneumococcal Disease Incidence and Mortality. *Clinical Infectious Diseases* 2014; 59(8): 1066-1073.
4. Kelly MM, Collier RJ, Kohler JE, Zhao Q, Sklansky DJ, Shadman KA, Thurber A, Barreda CB, Edmonson MB. Trends in Hospital Treatment of Empyema in Children in the United States. *The Journal of Pediatrics* 2018; 202: 245-251.e241.
5. Weinberger DM, Harboe ZB, Shapiro ED. Developing Better Pneumococcal Vaccines for Adults. *JAMA Internal Medicine* 2017; 177(3): 303-304.
6. Ladhani SN, Collins S, Djennad A, Sheppard CL, Borrow R, Fry NK, Andrews NJ, Miller E, Ramsay ME. Rapid increase in non-vaccine serotypes causing invasive pneumococcal disease in England and Wales, 2000-2013;17: a prospective national observational cohort study. *The Lancet Infectious Diseases* 2018; 18(4): 441-451.
7. Miller E, Andrews NJ, Waight PA, Slack MP, George RC. Herd immunity and serotype replacement 4 years after seven-valent pneumococcal conjugate vaccination in England and Wales: an observational cohort study. *Lancet Infect Dis* 2011; 11(10): 760-768.
8. Waight PA, Andrews NJ, Ladhani SN, Sheppard CL, Slack MPE, Miller E. Effect of the 13-valent pneumococcal conjugate vaccine on invasive pneumococcal disease in England and Wales 4 years after its introduction: an observational cohort study. *Lancet Infect Dis* 2015; 15(5): 535-543.
9. Pick H, Daniel P, Rodrigo C, Bewick T, Ashton D, Lawrence H, Baskaran V, Edwards-Pritchard RC, Sheppard C, Eletu SD, Rose S, Litt D, Fry NK, Ladhani S, Chand M, Trotter C, McKeever TM, Lim WS. Pneumococcal serotype trends, surveillance and risk factors in UK adult pneumonia, 2013–18. *Thorax* 2020; 75(1): 38.
10. Vallés X, Marcos A, Pinart M, Piñer R, Marco F, Mensa JM, Torres A. Hospitalized Community-Acquired Pneumonia Due to *Streptococcus pneumoniae*: Has Resistance to Antibiotics Decreased? *Chest* 2006; 130(3): 800-806.
11. Cillóniz C, Ewig S, Polverino E, Muñoz-Almagro C, Marco F, Gabarrús A, Menéndez R, Mensa J, Torres A. Pulmonary complications of pneumococcal community-acquired pneumonia: incidence, predictors, and outcomes. *Clinical Microbiology and Infection* 2012; 18(11): 1134-1142.
12. Chalmers JD, Singanayagam A, Murray MP, Scally C, Fawzi A, Hill AT. Risk factors for complicated parapneumonic effusion and empyema on presentation to hospital with community-acquired pneumonia. *Thorax* 2009; 64(7): 592.
13. Wagenvoort GHJ, Sanders EAM, Vlamincx BJ, Elberse KE, de Melker HE, van der Ende A, Knol MJ. Invasive pneumococcal disease: Clinical outcomes and patient characteristics 2–6 years after introduction of 7-valent pneumococcal conjugate vaccine compared to the pre-vaccine period, the Netherlands. *Vaccine* 2016; 34(8): 1077-1085.
14. Falguera M, Carratalà J, Bielsa S, García-Vidal C, Ruiz-González A, Chica I, Gudiol F, Porcel JM. Predictive factors, microbiology and outcome of patients with parapneumonic effusion. *European Respiratory Journal* 2011; 38(5): 1173.
15. Hyams C, Amin-Chowdhury Z, Fry NK, North P, Finn A, Judge A, Ladhani SN, Williams OM. *Streptococcus Pneumoniae* septic arthritis in adults in Bristol and Bath, United Kingdom, 2006–2018: a 13-year retrospective observational cohort study. *Emerging Microbes & Infections* 2021; 10(1): 1369-1377.
16. Amin-Chowdhury Z, Collins S, Sheppard C, Litt D, Fry NK, Andrews N, Ladhani SN. Characteristics of Invasive Pneumococcal Disease Caused by Emerging Serotypes After the

Introduction of the 13-Valent Pneumococcal Conjugate Vaccine in England: A Prospective Observational Cohort Study, 2014–2018. *Clinical Infectious Diseases* 2020.

17. Lim WS, van der Eerden MM, Laing R, Boersma WG, Karalus N, Town GI, Lewis SA, Macfarlane JT. Defining community acquired pneumonia severity on presentation to hospital: an international derivation and validation study. *Thorax* 2003; 58(5): 377.

18. Rahman NM, Kahan BC, Miller RF, Gleeson FV, Nunn AJ, Maskell NA. A Clinical Score (RAPID) to Identify Those at Risk for Poor Outcome at Presentation in Patients With Pleural Infection. *Chest* 2014; 145(4): 848-855.

19. Corcoran JP, Psallidas I, Gerry S, Piccolo F, Koegelenberg CF, Saba T, Daneshvar C, Fairbairn I, Heinink R, West A, Stanton AE, Holme J, Kastelik JA, Steer H, Downer NJ, Haris M, Baker EH, Everett CF, Pepperell J, Bewick T, Yarmus L, Maldonado F, Khan B, Hart-Thomas A, Hands G, Warwick G, De Fonseca D, Hassan M, Munavvar M, Guhan A, Shahidi M, Pogson Z, Dowson L, Popowicz ND, Saba J, Ward NR, Halifax RJ, Dobson M, Shaw R, Hedley EL, Sabia A, Robinson B, Collins GS, Davies HE, Yu L-M, Miller RF, Maskell NA, Rahman NM. Prospective validation of the RAPID clinical risk prediction score in adult patients with pleural infection: the PILOT study. *European Respiratory Journal* 2020: 2000130.

20. Houseman C, Hughes GJ, Chapman KE, Wilson D, Gorton R. Increased Invasive Pneumococcal Disease, North East England, UK. *Emerg Infect Dis* 2017; 23(1): 122-126.

21. Abram SGF, Alvand A, Judge A, Beard DJ, Price AJ. Mortality and adverse joint outcomes following septic arthritis of the native knee: a longitudinal cohort study of patients receiving arthroscopic washout. *The Lancet Infectious Diseases* 2020; 20(3): 341-349.

22. Finley C, Clifton J, Fitzgerald JM, Yee J. Empyema: an increasing concern in Canada. *Can Respir J* 2008; 15(2): 85-89.

23. Mummadi SR, Stoller JK, Lopez R, Kailasam K, Gillespie CT, Hahn PY. Epidemiology of Adult Pleural Disease in the United States. *Chest* 2021; 160(4): 1534-1551.

24. Sogaard M, Nielsen RB, Norgaard M, Kornum JB, Schønheyder HC, Thomsen RW. Incidence, Length of Stay, and Prognosis of Hospitalized Patients With Pleural Empyema: A 15-Year Danish Nationwide Cohort Study. *Chest* 2014; 145(1): 189-192.

25. Arnold DT, Hamilton FW, Morris TT, Suri T, Morley A, Frost V, Vipond IB, Medford AR, Payne RA, Muir P, Maskell NA. Epidemiology of pleural empyema in English hospitals and the impact of influenza. *European Respiratory Journal* 2020: 2003546.

26. Maguire D, Dunn P, McKenna H. How hospital activity in the NHS in England has changed over time. 2016.

27. Fletcher MA, Schmitt HJ, Syrochkina M, Sylvester G. Pneumococcal empyema and complicated pneumonias: global trends in incidence, prevalence, and serotype epidemiology. *European Journal of Clinical Microbiology & Infectious Diseases* 2014; 33(6): 879-910.

28. Brueggemann AB, Griffiths DT, Meats E, Peto T, Crook DW, Spratt BG. Clonal Relationships between Invasive and Carriage *Streptococcus pneumoniae* and Serotype- and Clone-Specific Differences in Invasive Disease Potential. *The Journal of Infectious Diseases* 2003; 187(9): 1424-1432.

29. Weinberger DM, Harboe ZB, Sanders EAM, Ndiritu M, Klugman KP, Rückinger S, Dagan R, Adegbola R, Cutts F, Johnson HL, O'Brien KL, Scott JA, Lipsitch M. Association of Serotype with Risk of Death Due to Pneumococcal Pneumonia: A Meta-Analysis. *Clinical Infectious Diseases* 2010; 51(6): 692-699.

30. Hyams C, Yuste J, Bax K, Camberlein E, Weiser JN, Brown JS. *Streptococcus pneumoniae* resistance to complement-mediated immunity is dependent on the capsular serotype. *Infect Immun* 2010; 78(2): 716-725.

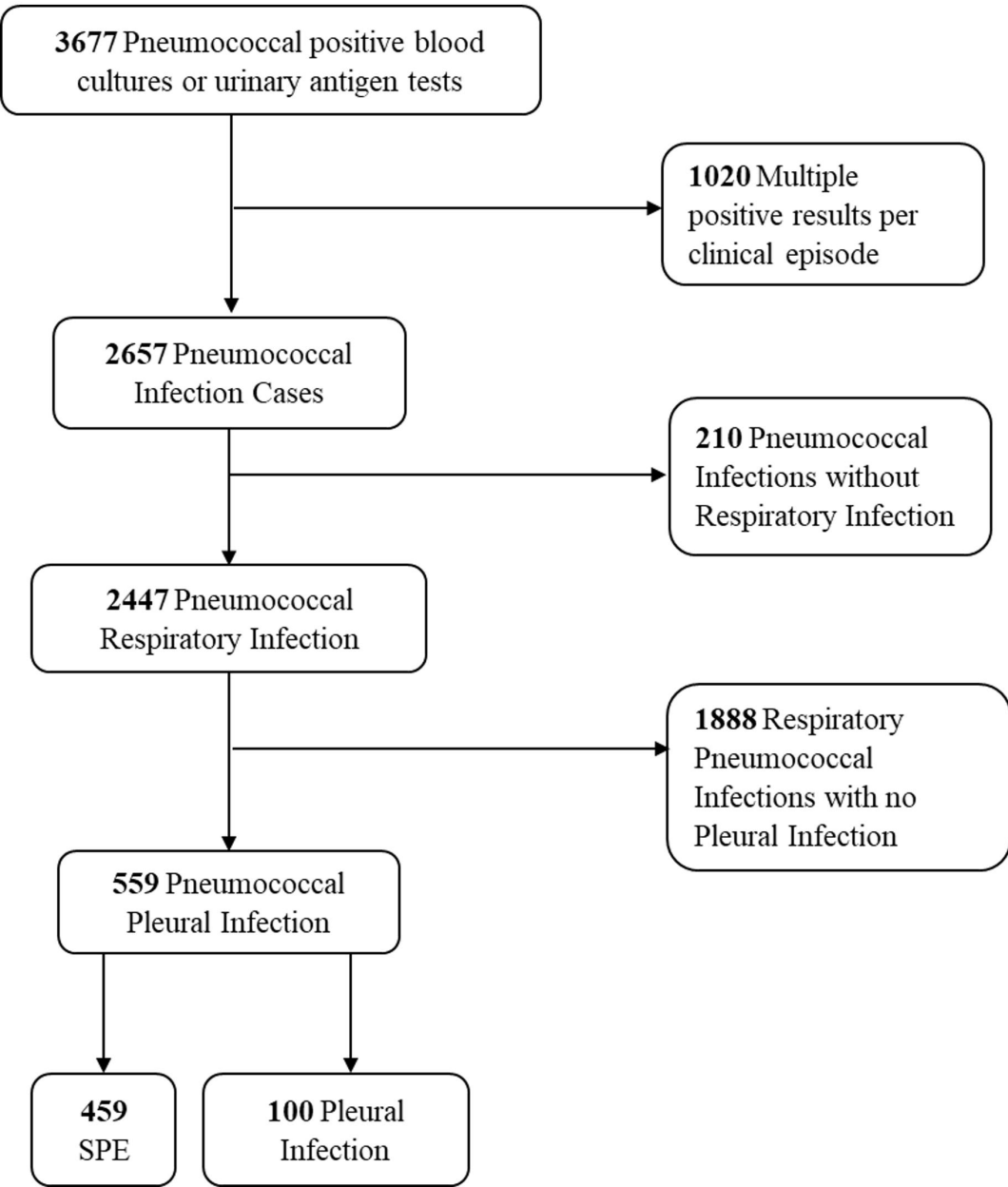
31. Kaushal N, Kumari S, Jhelum H, Sehgal D. In vitro and in vivo characterization of the interaction, proinflammatory, immunomodulatory and antigenic properties of capsular polysaccharide from *Streptococcus pneumoniae* serotype 1. *International Journal of Biological Macromolecules* 2020; 143: 521-532.



32. Bergman K, Härnqvist T, Backhaus E, Trollfors B, Dahl MS, Kolberg H, Ockborn G, Andersson R, Karlsson J, Mellgren Å, Skovbjerg S. Invasive pneumococcal disease in persons with predisposing factors is dominated by non-vaccine serotypes in Southwest Sweden. *BMC Infectious Diseases* 2021; 21(1): 756.
33. Luck JN, Tettelin H, Orihuela CJ. Sugar-Coated Killer: Serotype 3 Pneumococcal Disease. *Frontiers in Cellular and Infection Microbiology* 2020: 10.
34. Pande A, Nasir S, Rueda AM, Matejowsky R, Ramos J, Doshi S, Kulkarni P, Musher DM. The Incidence of Necrotizing Changes in Adults With Pneumococcal Pneumonia. *Clinical Infectious Diseases* 2012; 54(1): 10-16.
35. Azarian T, Mitchell PK, Georgieva M, Thompson CM, Ghouila A, Pollard AJ, von Gottberg A, du Plessis M, Antonio M, Kwambana-Adams BA, Clarke SC, Everett D, Cornick J, Sadowy E, Hryniewicz W, Skoczynska A, Moisi JC, McGee L, Beall B, Metcalf BJ, Breiman RF, Ho PL, Reid R, O'Brien KL, Gladstone RA, Bentley SD, Hanage WP. Global emergence and population dynamics of divergent serotype 3 CC180 pneumococci. *PLOS Pathogens* 2018; 14(11): e1007438.
36. Croucher NJ, Mitchell AM, Gould KA, Inverarity D, Barquist L, Feltwell T, Fookes MC, Harris SR, Dordel J, Salter SJ, Browall S, Zemlickova H, Parkhill J, Normark S, Henriques-Normark B, Hinds J, Mitchell TJ, Bentley SD. Dominant Role of Nucleotide Substitution in the Diversification of Serotype 3 Pneumococci over Decades and during a Single Infection. *PLOS Genetics* 2013; 9(10): e1003868.
37. Groves N, Sheppard CL, Litt D, Rose S, Silva A, Njoku N, Rodrigues S, Amin-Chowdhury Z, Andrews N, Ladhani S, Fry NK. Evolution of Streptococcus pneumoniae Serotype 3 in England and Wales: A Major Vaccine Evader. *Genes* 2019; 10(11).
38. Cargill TN, Hassan M, Corcoran JP, Harriss E, Asciak R, Mercer RM, McCracken DJ, Bedawi EO, Rahman NM. A systematic review of comorbidities and outcomes of adult patients with pleural infection. *European Respiratory Journal* 2019: 1900541.
39. White HD, Henry C, Stock EM, Arroliga AC, Ghamande S. Predicting Long-Term Outcomes in Pleural Infections. RAPID Score for Risk Stratification. *Annals of the American Thoracic Society* 2015; 12(9): 1310-1316.
40. Hyams C, Williams OM, Williams P. Urinary antigen testing for pneumococcal pneumonia: is there evidence to make its use uncommon in clinical practice? *ERJ Open Research* 2020; 6(1): 00223-02019.

## Figure One: Study Cohort

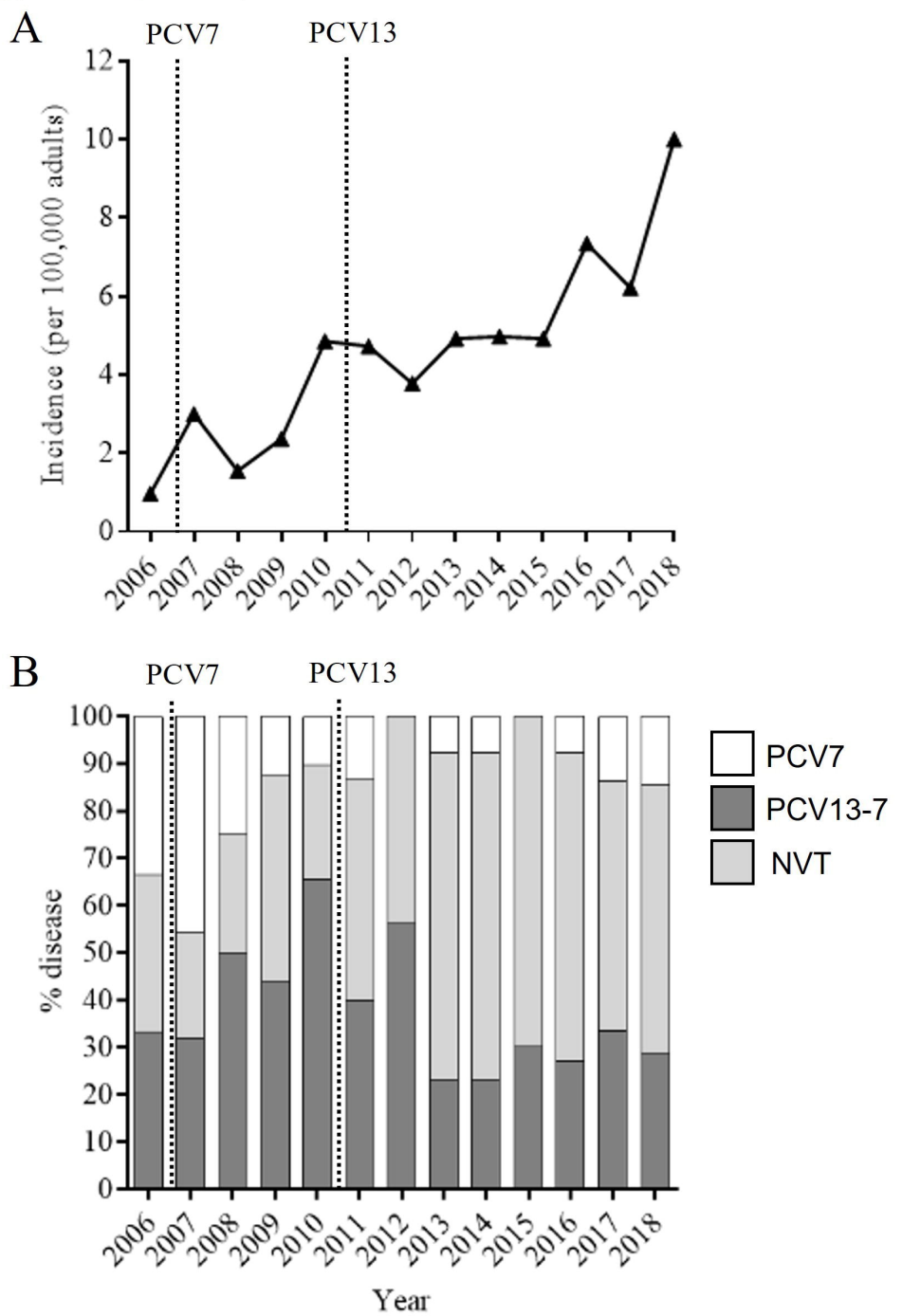
Results from 3677 microbiology database occurrences of a positive blood or urine antigen test were identified. There were 2657 cases of pneumococcal infection in adults, including 559 patients with parapneumonic effusions.



**Figure 2: Vaccine group serotype trends in pneumococcal parapneumonic effusions in Bristol, UK 2006-2018**

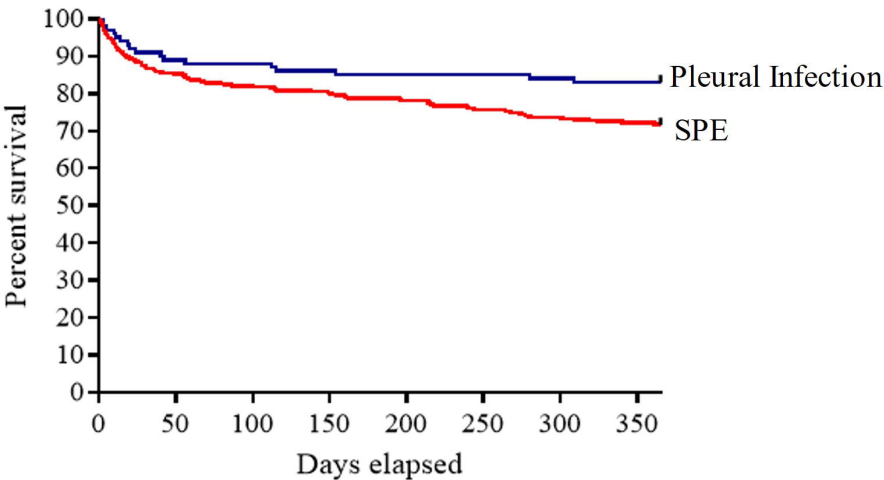
(A) Incidence\* of pneumococcal parapneumonic effusion, per 100,000 adults, and (B) proportions of serotyped disease caused by serotypes grouped by vaccine as shown from 2006-2018. Dashed lines show the introductions of paediatric PCV7 and PCV13.

\*Calculated using adult population data from the Office of National Statistics (Supplementary Data 4).



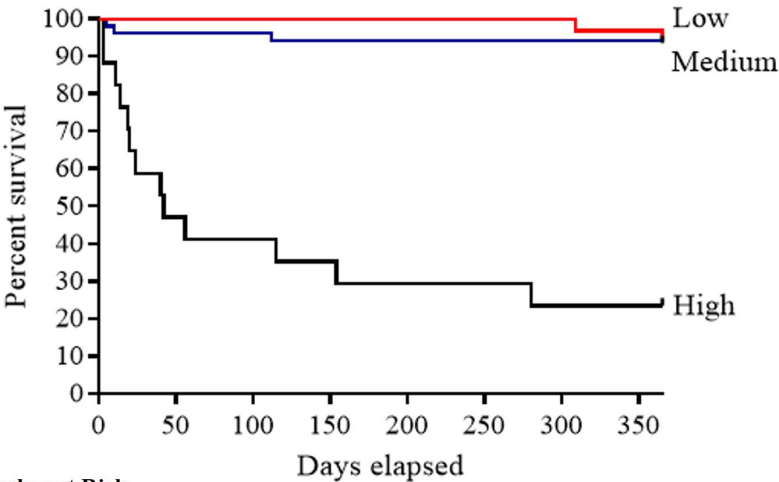
**Figure 3: 1-year survival in patients with pneumococcal parapneumonic effusions**

(A) Kaplan-Meier survival curve and number at risk for patients with simple parapneumonic effusion (SPE) (red line) and pleural infection (blue line). (B) Kaplan-Meier survival curve and number at risk for patients with pneumococcal pleural infection for low (red line), medium (blue line) and high (black line) RAPID score groups. The number of subjects at risk immediately before each time point is listed in a numbers-at-risk table



Number at Risk

Days	0	56	112	154	204	250	300	365
SPE	459	385	370	358	346	334	316	309
Pleural infection	100	89	86	85	84	83	82	80



Number at Risk

Days	0	50	112	154	280	310	365
Low	30	30	30	30	30	29	29
Medium	50	48	47	47	47	47	47
High	14	8	7	6	5	4	4