

1 **Parapneumonic effusions related to *Streptococcus pneumoniae*: serotype and disease**  
2 **severity trends**

3 Catherine Hyams MB PhD, Academic Respiratory Unit and Bristol Vaccine Centre,  
4 University of Bristol, Bristol, UK. ORCID: 0000-0003-3923-1773

5 David T Arnold PhD, Academic Respiratory Unit, University of Bristol, Bristol, UK. ORCID  
6 0000-0003-3158-7740

7 Robyn Heath, MA. Vaccine and Testing Research Team, Clinical Research Facility, St  
8 Michael's Hill, Bristol Royal Infirmary, Bristol, United Kingdom

9 Zahin Amin-Chowdhury MSc. National Infection Service, UKHSA, London, United  
10 Kingdom

11 David Hettle MBChB. Microbiology Services Bristol, Bristol Royal Infirmary and North  
12 Bristol NHS Trust, Bristol, United Kingdom. ORCID: 0000-0002-7606-986X

13 Gabriella Ruffino MBChB, Academic Respiratory Unit and Bristol Vaccine Centre,  
14 University of Bristol, Bristol, UK. ORCID: 0000-0002-1549-9364

15 Paul North BSc, Microbiology Services Bristol, Bristol Royal Infirmary and North Bristol  
16 NHS Trust, Bristol, United Kingdom.

17 Charli Grimes BSc, Academic Respiratory Unit and Bristol Vaccine Centre, University of  
18 Bristol, Bristol, UK. ORCID: 0000-0002-0171-0704

19 Norman K Fry PhD, National Infection Service, UKHSA, London, United Kingdom.  
20 ORCID: 0000-0003-4862-6507

21 Philip Williams PhD, Microbiology Services Bristol, Bristol Royal Infirmary and North  
22 Bristol NHS Trust, Bristol, United Kingdom.

23 Leon Danon PhD, Engineering Mathematics, University of Bristol, Bristol, United Kingdom

24 O Martin Williams PhD, Microbiology Services Bristol, Bristol Royal Infirmary and North  
25 Bristol NHS Trust, Bristol, United Kingdom.

26 Shamez Ladhani PhD, National Infection Service, UKHSA, London, United Kingdom.  
27 ORCID: 0000-0002-0856-2476

28 Adam Finn PhD, Bristol Vaccine Centre, University of Bristol, Bristol, UK. ORCID: 0000-  
29 0003-1756-5668

30 Nick A Maskell MD, Academic Respiratory Unit, University of Bristol, Bristol, UK. ORCID:  
31 0000-0002-1276-6500

32

33 **Corresponding address:** Dr Catherine Hyams, MBBS BSc(Hons) PhD MRCP  
34 Academic Respiratory Unit, Learning & Research Building,

35 Southmead Hospital, Bristol, BS10 5NB  
36 catherine.hyams@bristol.ac.uk

37 **Descriptor:** 9.31 Pleural Diseases/Mesothelioma

38 **Running head:** Pneumococcal related parapneumonic effusions

39 **Keywords:** Streptococcus pneumoniae; Empyema; Pleural Effusion

40

41 **Author Contributions:** CH, DA, AF, OMW and NM generated the research questions  
42 and analysis plan. CH, RH, DH, GF, DA, PN, PW, ZAC  
43 collected data. CH and DH verified the data. CH, DA, RH, AF  
44 and NM undertook the data analysis. AF, OMW and NM  
45 provided oversight of the research. AF and CH verified the  
46 data. All authors contributed to the preparation of the  
47 manuscript and its revision for publication and had  
48 responsibility for the decision to publish.

49

50 **Funding:** CH was funded by the National Institute for Health Research [NIHR  
51 Academic Clinical Fellowship (ACF-2015-25-002). DTA was funded by an  
52 NIHR Doctoral Research Fellowship (DRF-2018-11-ST2-065). The views  
53 expressed are those of the author(s) and not necessarily those of the NIHR or  
54 the Department of Health and Social Care.

55

56 **Declarations:** CH is Principal Investigator of the AvonCAP study which is an investigator-  
57 led University of Bristol study funded by Pfizer. AF is a member of the Joint  
58 Committee on Vaccination and Immunization (JCVI) and chair of the World  
59 Health Organization European Technical Advisory Group of Experts on  
60 Immunization (ETAGE) committee. In addition to receiving funding from  
61 Pfizer as Chief Investigator of this study, he leads another project investigating  
62 transmission of respiratory bacteria in families jointly funded by Pfizer and the  
63 Gates Foundation. The other authors have no relevant conflicts of interest to  
64 declare.

65

66 **Word Count:** 2938

## 67 ABSTRACT

### 68 Rationale

69 *Streptococcus pneumoniae* epidemiology is changing in response to vaccination and some  
70 data suggest empyema incidence is increasing. However, differences exist between UK and  
71 USA studies. We describe trends in the clinical phenotype of adult pneumococcal pleural  
72 infection, including simple parapneumonic effusions (SPE) in the pneumococcal conjugate  
73 vaccination (PCV) era.

### 74 Objectives:

75 To determine whether there were differences in pneumococcal disease presentation and  
76 severity associated with pleural infection.

### 77 Methods

78 A retrospective cohort study, all adults  $\geq 16$  years admitted to three large UK hospitals, 2006-  
79 2018 with pneumococcal disease. 2477 invasive pneumococcal cases were identified: 459  
80 SPE and 100 pleural infection cases. Medical records were reviewed for each clinical  
81 episode. Serotype data were obtained from the UK Health Security Agency national reference  
82 laboratory.

### 83 Results

84 Incidence increased over time, including non-PCV-serotype disease. PCV7-serotype disease  
85 declined following paediatric PCV7 introduction, but the effect of PCV13 was less apparent  
86 as disease caused by the additional six serotypes plateaued with serotypes 1 and 3 causing  
87 such parapneumonic effusions from 2011 onwards.

88 Patients with pleural infection had a median survival 468 days (95% CI 340-590) in, versus  
89 286 days (95% CI 274-335) in those with SPE. Pleural infection associated with frank pus

90 had lower 90-day mortality than pleural infection without pus (0% versus 29%,  $P<0.0001$ ).  
 91 90-day mortality could be predicted by baseline increased RAPID (Renal, Age, Purulence,  
 92 Infection source, and Dietary factors) score (HR15.01, 95% CI 1.24-40.06,  $P=0.049$ ).

### 93 **Conclusions**

94 Pneumococcal infection continues to cause severe disease despite the introduction of PCVs.  
 95 The predominance of serotype 1 and 3 in this adult UK cohort is in keeping with previous  
 96 studies in paediatric and non-UK studies. Rising non-PCV serotype disease and limited  
 97 impact of PCV13 on cases caused by serotypes 1 and 3 offset the reductions in adult  
 98 pneumococcal parapneumonic effusion disease burden observed following introduction of the  
 99 childhood PCV7 programme.

100

## INTRODUCTION

*Streptococcus pneumoniae* remains the leading bacterial cause of community-acquired pneumonia (CAP), despite vaccine deployment. A dose of PneumoVax® (unconjugated 23-valent polysaccharide vaccine, PPV23) is offered to all adults from age 65 years in the UK and  $\geq 2$ -year-olds with at least one clinical risk factor for pneumococcal disease also receive this vaccine (1). The 7-valent pneumococcal conjugate vaccine (PCV) (PCV7) was introduced into the UK childhood vaccination programme in 2006 on a 2 priming dose schedule with a booster following the first birthday (2+1) and subsequently replaced in April 2010 with a 13-valent PCV (PCV13). The schedule was modified to 1+1 in 2020. Several USA studies have shown that PCV introduction resulted in a significant reduction in both carriage and invasive pneumococcal disease (IPD) due to vaccine serotypes, especially in children (2, 3) although an increase in pneumococcal empyema cases in children has been reported (4) and the effect of paediatric PCV deployment on adult disease phenotype is debated (5). By 2016/17, UK surveillance demonstrated that PCV7 serotype disease in children had virtually disappeared, with significant reduction in PCV7 disease burden in adults. In contrast, while PCV13 serotype disease incidence has not disappeared across all age groups, but plateaued, with a remaining residual incidence of 7.97 per 100,000 across all age groups. There has also been an increase in disease attributable to non-PCV13 serotypes, especially in the elderly, which has reduced overall disease reduction resulting from vaccine introduction (6-8). Evidence from a large pneumococcal pneumonia patient cohort in Nottingham, UK suggests that, aside from age, residential care status and some comorbidities, there are relatively few differences between patients with disease caused by PCV13 and those with non-PCV13 serotype infections (9).

Approximately 15-20% hospitalised pneumococcal CAP cases are associated with a pleural effusion (10, 11) and 6% with empyema (10, 12). However, recent evidence suggests that incidence of pneumococcal empyema has increased following paediatric PCV deployment, especially in adults aged >65 years, possibly due to serotype 1 emergence (13). Thus, vaccine-driven serotype replacement may be leading to changes in pneumococcal disease phenotype and severity. This is a concern as morbidity and mortality associated with simple parapneumonic effusion (SPE) are higher than with uncomplicated pneumonia (14).

Here we present the largest cohort of patients with a single-organism pleural infection, encompassing SPE and pleural infection (complex parapneumonic effusion (CPE) or empyema) attributable to pneumococcus, in a single-centre observational study covering thirteen years during which PCVs were introduced into the UK paediatric vaccination programme. We sought to determine whether there were any differences in pneumococcal disease presentation and severity associated with pleural infection, given concerns surrounding changing pneumococcal serotype distribution.

## MATERIALS AND METHODS

### Study Subjects

Patients aged  $\geq 16$  years admitted to all three hospitals providing emergency care in Bristol and Bath (University Hospitals Bristol and Weston, North Bristol and The Royal United Hospital NHS Trusts) between January 2006 and December 2018, with a confirmed microbiological diagnosis of pneumococcal infection were eligible for this study. This study was approved by the Health Research Authority, UK (IRAS 265437).

### Study Design

A retrospective cohort study at three large NHS hospitals in the UK.

### Methods

Study-eligible cases were identified retrospectively by searching the Laboratory Information Management System (LIMS) database (Clinisys WinPath Enterprise). *S. pneumoniae* was confirmed on culture from sterile-site sampling at a central laboratory using standard microbiological techniques combined with API®-20 Strep (BioMérieux, UK) or MALDI-TOF (matrix-assisted laser desorption/ionisation/time of flight) mass spectrometry (Bruker, UK) (15). A positive pneumococcal urinary-antigen test (BinaxNOW®, Alere, UK) was also considered confirmative of pneumococcal infection. Any patient with pleural fluid which cultured a single-organism which was not pneumococcus was excluded from this cohort; although, multi-organism pleural infection including pneumococcus was included.

Confirmed cases were linked with the UK Health Security Agency (UKHSA) national reference laboratory to obtain serotype data (16) which were collected separately from clinical data to avoid any risk of bias in data collection. Pneumococcal serotypes were grouped by PCV (PCV7; PCV13-7 representing the additional 6 serotypes in PCV13; and PCV13) or as non-PCV (Supplementary Data 1).

Patients with pneumococcal infection and a pleural effusion on radiology were either classified as:

(1) pleural infection: if pleural fluid was pus; bacterial culture positive pleural fluid; an effusion relating to a current pneumonia episode which necessitated definitive drainage (e.g. thoracic surgery); or, there was an exudative effusion with  $\text{pH} \leq 7.2$ ; or,

(2) SPE: an exudative effusion not classified as pleural infection in a patient with a clinical and/or radiological diagnosis of pneumonia.

Patients' clinical records were reviewed at each hospital and data, including clinical outcomes, recorded. The vaccination status of each patient was established from electronically linked GP records (15). The CURB65 severity score on admission was calculated for each clinical episode (17). Patients with pleural infection had a RAPID (Renal, Age, Purulence, Infection source, and Dietary factors) score calculated (18), which has been validated to stratify adults with pleural infection according to increasing risk of mortality (19).

## Analysis



185 Patient data are reported as medians and interquartile ranges (IQR) for continuous variables.  
 186 Categorical variables are presented as counts and percentages. Baseline characteristics and  
 187 comorbid risk factors for SPE and pleural infection were compared using Fisher’s exact tests  
 188 for categorical variables, and the Mann-Whitney U-test for non-parametric continuous  
 189 variables. The Kaplan–Meier (KM) method and Cox proportional hazard regression model  
 190 were used for calculation of survival at 30-, 90- and 365-days following first positive  
 191 pneumococcal microbiological test. Proportional hazard assumptions were tested by visual  
 192 assessment of the KM survival curve, log(-log) plots and Schoenfeld residuals. Survival  
 193 differences were analyzed using the log-rank test. Statistical analysis was performed using  
 194 SPSS, version 28.0 (New York, IBM). Graphs were generated in GraphPad PRISM, version  
 195 9.0.

## RESULTS

2657 IPD episodes were identified, of which 2447 were respiratory infections: 1888 pneumonia cases, 459 SPE and 100 cases of pleural infection (Figure 1). 283/559 (51%) cases with parapneumonic effusion had *S. pneumoniae* confirmed on blood culture, and in 42 cases pneumococcus was isolated from pleural fluid. In total, 282/559 (50%) were male with a median age of 68y (IQR 50-78) (Table 1, Supplementary Data 2). Pre-existing cardiac and respiratory disease was common in patients with parapneumonic effusions. Patients with pleural infection were younger than those with SPE (median ages 55 vs 69y respectively,  $P<0.001$ ), and were more likely to have history of alcohol misuse and/or intravenous drug usage ( $P<0.05$ ) and less likely to develop acute renal failure ( $P<0.05$ ). On presentation to hospital, neither clinical observations nor CURB65 score differed significantly between patients with SPE and pleural infection ( $P>0.05$ ); in contrast, patients with pleural infection had both a significantly greater neutrophilia ( $P<0.01$ ) and more elevated CRP levels ( $P<0.001$ ) (Table 1, Supplementary Data 2 and 3).

Annual incidence of *S. pneumoniae* parapneumonic effusions increased throughout the study period (Figure 2A). There was a 33% and 34% increase in unplanned hospital admissions and microbiological testing between 2006 and 2018 (Supplementary Data 4, indicating relative increase in hospital workload was not equivalent to the increase in disease incidence. The age of patients admitted throughout the study did not show any apparent trend (Supplementary Data 5). In 38% cases serotype was available, of which overall 52% were attributable to a PCV13 serotype while only 8% were caused by a non-vaccine serotype. Over the study period, there was an absolute and proportional decrease in disease caused by PCV7 serotypes. All parapneumonic effusions caused by a PCV7 serotype after 2011 were SPE (serotypes 14 and 19F), with no pleural infections caused by a PCV7 serotype after 2011. PCV13-7 disease

showed an initial rise, followed by a fall after PCV13 introduction with a gradual rise in disease over the last 5 study years (Figure 2B). Following the introduction of PCV13 in 2010, the only PCV13-7 serotypes that caused pneumococcal pleural infections were 1 and 3: 2 (17% of serotype known disease) and 3 (25%) pre-2010 pleural infection cases versus 9 (30%) and 7 (23%) post-2010 pleural infection cases due to serotype 1 and 3 respectively. Serotype 1 affected younger patients than serotype 3, but was associated with increased rates of renal failure (77% versus 43%,  $P=0.007$ ), higher RAPID severity group (high RAPID severity group 36% versus 17%,  $P=0.024$ ) and a trend towards higher loculation rates (23% versus 10%,  $P=0.205$ ) than seen in patients with serotype 3 parapneumonic effusions (Table 2).

Overall, 19% patients with pneumococcal parapneumonic effusions died within 90-days of presentation (Table 1, Supplementary Table 6). Patients with pleural infections had higher survival rates than those with SPE at 30-, 90- and 365-days ( $P<0.01$ ) (Figure 3A). Median survival was 468 days (340-590 days, 95% CI) in patients with pleural infection, vs 286 (274-335 days, 95% CI) in those with SPE. In total, 59/100 (59%) pleural infection patients had pus and these patients had improved 30-, 90-, and 365-day mortality compared to those without pus; in contrast, loculation was associated with reduced 30-, 90- and 365-day mortality (Table 4). Surgical management was associated with improved prognosis: no deaths occurred within 1-year of presentation compared to 24% mortality in patients with pleural infection who did not undergo surgery. Patients undergoing thoracic surgery were younger than those who did not (median age 45 years, IQR40-52 versus 66 years, IQR53-78).

244 The mortality rate among patients with pleural infection increased alongside RAPID score  
 245 severity at 30-, 90- and 365-days (Figure 3B, Table 3), and a high RAPID score was  
 246 associated with a median survival of 56 days (20-154 days, 95% CI). Proportional hazards  
 247 regression analysis confirmed that more severe RAPID group was associated with increased  
 248 90-day ( $P=0.049$ , 95% CI 1.24-40.06) and 365-day mortality ( $P=0.034$ , 95% CI 1.09-51.2)  
 249 (Table 4).

250

## DISCUSSION

This observational cohort study, with data from a 13-year period spanning PCV introduction into the UK childhood vaccination programme, shows an increasing incidence of adult pneumococcal parapneumonic effusions. An increasing incidence of pneumococcal disease has also been reported by other UK studies (9, 16, 20, 21), with Pick *et al* reporting incidence of pneumococcal pneumonia of 32.2 and 48.2 per 100,000 population in 2013 and 2018 respectively (9). Using previously published estimates that up to 20% of adults hospitalised with pneumococcal pneumonia develop a pleural effusion (10, 11), estimates of parapneumonic effusion incidence from that study would be 6.4 and 9.6 in 2013 and 2018, which are similar to the incidence rates of 5.0 and 9.8 observed in the same years in this study. Recent national epidemiological studies of pleural infection from North America also show significant increases in pleural infection rates both in children (22) and adults (23). Likewise, a Danish study from 1997-2001, showed steadily rising pleural infection rates in the elderly (24) and a UK study showed annual rises in adult pleural infections from 2008-17 (25), most marked in over 60-year-old individuals with a 194% increase over the decade. Both overall admissions and microbiological testing at the study hospitals increased progressively during our study period, but not as much as disease incidence, suggesting this did not solely account for the increasing incidence observed. Whilst the study period encompassed a time when the UK vaccination programme changed, there was also an expanding total and older adult population in Bath and Bristol. Furthermore, there may have been changes in patient or physician treatment preferences, including threshold for referral to secondary care, diagnostic testing and treatment which may have impacted the incidence of disease estimated throughout this study (26).

The introduction of PCV7 into the UK childhood vaccination programme in 2006 was followed by a decrease in adult pneumococcal pleural effusions attributable to PCV7 vaccine serotypes in this study. Notably, all parapneumonic effusions due to PCV7 serotypes after 2011 were SPE and due to serotypes 14 and 19F, with no cases of pleural infection. However, PCV13 introduction in 2010 did not result in such a marked indirect reduction in disease caused by the additional six serotypes in PCV13 due to the persistence of serotype 1 or 3 disease. This partially aligns with national serotype trends, showing reductions in both PCV7 serotype and serotype 1 adult IPD incidence (6), and both serotypes are prevalent in studies of pleural infection in children (27). In the UK, large reductions in vaccine-serotype adult IPD were offset by increases in non-PCV13 IPD (6, 16, 20), a trend also apparent in this patient cohort, with non-PCV13 disease increasing from 30% to 60% of known serotype disease. Pick *et al* showed an increase in non-PCV13 serotype pneumococcal pneumonia from 2014/15 onwards (9) as well as an overall increase in PCV13-7 serotype disease, in contrast to trends reported in this study. These are the first data on serotype trends in adult pneumococcal pleural disease since paediatric PCV introduction in the UK.

Serotype affects pneumococcal resistance to innate immunity, duration of nasopharyngeal colonisation, the number of episodes of invasive disease per colonisation event, mortality and disease severity (28-30). The two PCV13-7 serotypes which continued to cause pneumococcal pleural infection following PCV13 introduction are notable serotypes as they have unusual polysaccharide capsules. Serotype 1 expresses a zwitterionic and structurally diverse polysaccharide capsule, which uniquely may act as a T-cell dependent antigen (31). This serotype rarely causes asymptomatic nasopharyngeal colonization but is a commonly isolated in IPD (28), and frequently causes invasive pneumonia (32). Studies suggests serotype 1 is more likely to be identified in young patients, and in some studies it is the most

frequent cause of pneumococcal pleural infection, with increasing pleural infection incidence attributable to this serotype (11, 13). In contrast, the serotype 3 polysaccharide capsule is large, resulting in a highly mucoid appearance, and is one of a few capsules produced by synthase-mediated synthesis (33). Serotype 3 also causes considerable disease burden (11, 27) being the most common overall cause of pneumonia in the USA (34), is highly invasive (28) and is associated with increased mortality (29). Distinct lineages exist within serotype 3 clonal complex 180, and recent clade distributions shift has led to the emergence and expansion of clade II (35, 36), which now represents 50% serotype 3 IPD in the UK (37). We could not determine serotype 3 clade grouping in this analysis, but clade II emergence may, at least in part, explain serotype 3 disease persistence.

Overall, pre-existing medical conditions were commonly present amongst adults with pneumococcal parapneumonic effusions, although the median patient age was lower than that seen in other cohorts of parapneumonic effusions (12, 25). Uniquely, this cohort of parapneumonic effusion cases were all attributable to pneumococcal infection, which may cause the condition in younger patients than other pathogens (25, 38). Despite this, the burden of pre-existing medical comorbidity was equivalent: both SPE and pleural infection patients had significant cardiac (44%) and respiratory (43%) conditions predominating. A large systematic review found that 72% of patients with pleural infection had at least one significant comorbidity, with high levels of pre-existing cardiac (19%) and respiratory (20%) diseases (38). Excessive alcohol consumption was significantly more common among pleural infection cases, in line with other published cohort studies (14). Alcohol abuse may predispose to the development of pleural infection through its general immunosuppressive effect in addition to associated increases in risk of aspiration and delayed presentation to medical services (12).

325

326 As shown in the initial validation and subsequent cohort studies of the RAPID score (18, 19),  
 327 a high score was strongly associated with the risk of mortality by 3-months. Study patients in  
 328 the low-risk group had a 3% (95% C.I 0.7 to 15%) risk of 90-day mortality compared to 57%  
 329 (95% C.I. 28% to 82%  $P<0.01$ ), for those with a high risk score, while there was much less  
 330 difference in survival between those in low and medium RAPID groups, as reported by others  
 331 (19, 39). There was a positive association between pleural fluid purulence and survival: this  
 332 relationship has been demonstrated in cohorts that were not restricted by causative organism,  
 333 suggesting it is disease and not pathogen specific (18). Anecdotal report findings suggest  
 334 effusions comprised of frank pus tend to be non-loculated and therefore more readily drained.

335

336 Interestingly, our data suggests that patients with pneumococcal pleural infection have  
 337 improved survival up to one year compared to patients with pneumococcal SPE. It should be  
 338 noted that up to 30% of effusions are known to have more than one aetiology (40), with many  
 339 having a cardiac or renal component. It therefore can be difficult to determine the full  
 340 aetiology of a pleural effusion, and pneumococcal SPEs may be often due to dual aetiology  
 341 e.g. infection, causing atrial fibrillation and cardiac failure. In this cohort, pre-existing cardiac  
 342 disease and bilateral effusions were more common in patients with SPE. Previous data  
 343 suggests individuals with pneumonia and cardiac failure have higher mortality rates (41), and  
 344 bilateral effusions are associated with worse outcomes (41, 42). Hence, whilst some effusions  
 345 reflect more severe lung inflammation, others may reflect concomitant comorbidity in the  
 346 host; either factor can account for worse outcome and may explain this finding in our cohort.  
 347 Further, the high proportion of patients undergoing surgical intervention, which is associated



with improved outcomes (43, 44), may have improved patient survival in the pleural infection patients.

This study identified patients with pneumococcal infection and parapneumonic effusions within a defined geographical area, covering a population of approximately one million adults, and encompassed 3 large hospitals with 100,000 unplanned adult admissions annually. One of these hospitals is the regional thoracic surgery centre, whilst another has a specialist pleural disease service, possibly increasing the accuracy of the clinical data presented here. We captured disease and serotype trends over 13 years, spanning PCV introduction. By linking with the UKHSA national reference laboratory we were able to report serotype where it was available. Importantly, the epidemiological data were supported with detailed clinical information for individual patients, including short- and long-term outcomes. However, this study also has limitations. This is a retrospective observational study; therefore, only information documented in clinical records could be included and patients were managed at the discretion of individual physicians. As a regional study, the findings here may not be representative of other populations; although, our serotype trends are comparable to other UK national and regional reports. We included patients who tested positive for pneumococcus using the BinaxNOW® urinary antigen test, which has a known sensitivity of 65% and prolonged positive test result after exposure to pneumococcus (45). Lastly, different methodologies were used to identify pneumococcal serotypes during the study period; whole genomic sequencing was only routinely used by UKHSA from October 2017, and therefore earlier isolates did not have this performed.

371 Overall, we found an increasing incidence of pneumococcal parapneumonic effusion in this  
 372 UK population. The proportion of disease attributable to PCV7 serotypes fell after 2006,  
 373 when the PCV7 vaccine was introduced into the UK childhood vaccination programme;  
 374 importantly, no cases of PCV7 pleural infection occurred in adults after 2011. However,  
 375 disease attributable serotypes 1 and 3 did not show decline following PCV13 vaccine rollout.  
 376 Further research is needed to determine if *S. pneumoniae* serotype is predictive of mortality  
 377 risk in adults with pneumococcal parapneumonic effusions.

378     **ACKNOWLEDGEMENTS**

379     The authors would like to acknowledge the research teams at The Royal United, North  
380     Bristol and University Hospitals of Bristol and Weston NHS Trusts.

381

382     **DATA SHARING**

383     The data used in this study are sensitive and cannot be made publicly available without  
384     breaching patient confidentiality rules. Therefore, individual participant data and a data  
385     dictionary is not available to other researchers.

## 386 REFERENCES

- 387 1. UKHSA. Pneumococcal: The green book.2020. p. 1-13.
- 388 2. Whitney CG, Farley MM, Hadler J, Harrison LH, Bennett NM, Lynfield R, Reingold A, Cieslak  
389 PR, Pilishvili T, Jackson D, et al. Decline in invasive pneumococcal disease after the introduction of  
390 protein-polysaccharide conjugate vaccine. *New England Journal of Medicine* 2003;348(18):1737-  
391 1746.
- 392 3. Harboe ZB, Dalby T, Weinberger DM, Benfield T, Mølbak K, Slotved HC, Suppli CH, Konradsen  
393 HB, Valentiner-Branth P. Impact of 13-valent pneumococcal conjugate vaccination in invasive  
394 pneumococcal disease incidence and mortality. *Clinical Infectious Diseases* 2014;59(8):1066-1073.
- 395 4. Kelly MM, Collier RJ, Kohler JE, Zhao Q, Sklansky DJ, Shadman KA, Thurber A, Barreda CB,  
396 Edmonson MB. Trends in hospital treatment of empyema in children in the united states. *The*  
397 *Journal of Pediatrics* 2018;202:245-251.e241.
- 398 5. Weinberger DM, Harboe ZB, Shapiro ED. Developing better pneumococcal vaccines for  
399 adults. *JAMA Internal Medicine* 2017;177(3):303-304.
- 400 6. Ladhani SN, Collins S, Djennad A, Sheppard CL, Borrow R, Fry NK, Andrews NJ, Miller E,  
401 Ramsay ME. Rapid increase in non-vaccine serotypes causing invasive pneumococcal disease in  
402 england and wales, 2000-2013;17: A prospective national observational cohort study. *The Lancet*  
403 *Infectious Diseases* 2018;18(4):441-451.
- 404 7. Miller E, Andrews NJ, Waight PA, Slack MP, George RC. Herd immunity and serotype  
405 replacement 4 years after seven-valent pneumococcal conjugate vaccination in england and wales:  
406 An observational cohort study. *Lancet Infect Dis* 2011;11(10):760-768.
- 407 8. Waight PA, Andrews NJ, Ladhani SN, Sheppard CL, Slack MPE, Miller E. Effect of the 13-  
408 valent pneumococcal conjugate vaccine on invasive pneumococcal disease in england and wales 4  
409 years after its introduction: An observational cohort study. *Lancet Infect Dis* 2015;15(5):535-543.
- 410 9. Pick H, Daniel P, Rodrigo C, Bewick T, Ashton D, Lawrence H, Baskaran V, Edwards-Pritchard  
411 RC, Sheppard C, Eletu SD, et al. Pneumococcal serotype trends, surveillance and risk factors in uk  
412 adult pneumonia, 2013–18. *Thorax* 2020;75(1):38.
- 413 10. Vallés X, Marcos A, Pinart M, Piñter R, Marco F, Mensa JM, Torres A. Hospitalized  
414 community-acquired pneumonia due to streptococcus pneumoniae: Has resistance to antibiotics  
415 decreased? *Chest* 2006;130(3):800-806.
- 416 11. Cillóniz C, Ewig S, Polverino E, Muñoz-Almagro C, Marco F, Gabarrús A, Menéndez R, Mensa  
417 J, Torres A. Pulmonary complications of pneumococcal community-acquired pneumonia: Incidence,  
418 predictors, and outcomes. *Clinical Microbiology and Infection* 2012;18(11):1134-1142.
- 419 12. Chalmers JD, Singanayagam A, Murray MP, Scally C, Fawzi A, Hill AT. Risk factors for  
420 complicated parapneumonic effusion and empyema on presentation to hospital with community-  
421 acquired pneumonia. *Thorax* 2009;64(7):592.
- 422 13. Wagenvoort GHJ, Sanders EAM, Vlamincx BJ, Elberse KE, de Melker HE, van der Ende A,  
423 Knol MJ. Invasive pneumococcal disease: Clinical outcomes and patient characteristics 2–6 years  
424 after introduction of 7-valent pneumococcal conjugate vaccine compared to the pre-vaccine period,  
425 the netherlands. *Vaccine* 2016;34(8):1077-1085.
- 426 14. Falguera M, Carratalà J, Bielsa S, García-Vidal C, Ruiz-González A, Chica I, Gudiol F, Porcel JM.  
427 Predictive factors, microbiology and outcome of patients with parapneumonic effusion. *European*  
428 *Respiratory Journal* 2011;38(5):1173.
- 429 15. Hyams C, Amin-Chowdhury Z, Fry NK, North P, Finn A, Judge A, Ladhani SN, Williams OM.  
430 Streptococcus pneumoniae septic arthritis in adults in bristol and bath, united kingdom, 2006–2018:  
431 A 13-year retrospective observational cohort study. *Emerging Microbes & Infections*  
432 2021;10(1):1369-1377.
- 433 16. Amin-Chowdhury Z, Collins S, Sheppard C, Litt D, Fry NK, Andrews N, Ladhani SN.  
434 Characteristics of invasive pneumococcal disease caused by emerging serotypes after the

introduction of the 13-valent pneumococcal conjugate vaccine in england: A prospective observational cohort study, 2014–2018. *Clinical Infectious Diseases* 2020.

17. Lim WS, van der Eerden MM, Laing R, Boersma WG, Karalus N, Town GI, Lewis SA, Macfarlane JT. Defining community acquired pneumonia severity on presentation to hospital: An international derivation and validation study. *Thorax* 2003;58(5):377.
18. Rahman NM, Kahan BC, Miller RF, Gleeson FV, Nunn AJ, Maskell NA. A clinical score (rapid) to identify those at risk for poor outcome at presentation in patients with pleural infection. *Chest* 2014;145(4):848-855.
19. Corcoran JP, Psallidas I, Gerry S, Piccolo F, Koegelenberg CF, Saba T, Daneshvar C, Fairbairn I, Heinink R, West A, et al. Prospective validation of the rapid clinical risk prediction score in adult patients with pleural infection: The pilot study. *European Respiratory Journal* 2020:2000130.
20. Houseman C, Hughes GJ, Chapman KE, Wilson D, Gorton R. Increased invasive pneumococcal disease, north east england, uk. *Emerging infectious diseases* 2017;23(1):122-126.
21. Abram SGF, Alvand A, Judge A, Beard DJ, Price AJ. Mortality and adverse joint outcomes following septic arthritis of the native knee: A longitudinal cohort study of patients receiving arthroscopic washout. *The Lancet Infectious Diseases* 2020;20(3):341-349.
22. Finley C, Clifton J, Fitzgerald JM, Yee J. Empyema: An increasing concern in canada. *Canadian respiratory journal* 2008;15(2):85-89.
23. Mummadi SR, Stoller JK, Lopez R, Kailasam K, Gillespie CT, Hahn PY. Epidemiology of adult pleural disease in the united states. *Chest* 2021;160(4):1534-1551.
24. Sogaard M, Nielsen RB, Norgaard M, Kornum JB, Schønheyder HC, Thomsen RW. Incidence, length of stay, and prognosis of hospitalized patients with pleural empyema: A 15-year danish nationwide cohort study. *Chest* 2014;145(1):189-192.
25. Arnold DT, Hamilton FW, Morris TT, Suri T, Morley A, Frost V, Vipond IB, Medford AR, Payne RA, Muir P, et al. Epidemiology of pleural empyema in english hospitals and the impact of influenza. *European Respiratory Journal* 2020:2003546.
26. Maguire D, Dunn P, McKenna H. How hospital activity in the nhs in england has changed over time. 2016.
27. Fletcher MA, Schmitt HJ, Syrochkina M, Sylvester G. Pneumococcal empyema and complicated pneumonias: Global trends in incidence, prevalence, and serotype epidemiology. *European Journal of Clinical Microbiology & Infectious Diseases* 2014;33(6):879-910.
28. Brueggemann AB, Griffiths DT, Meats E, Peto T, Crook DW, Spratt BG. Clonal relationships between invasive and carriage streptococcus pneumoniae and serotype- and clone-specific differences in invasive disease potential. *The Journal of Infectious Diseases* 2003;187(9):1424-1432.
29. Weinberger DM, Harboe ZB, Sanders EAM, Ndiritu M, Klugman KP, Rückinger S, Dagan R, Adegbola R, Cutts F, Johnson HL, et al. Association of serotype with risk of death due to pneumococcal pneumonia: A meta-analysis. *Clinical Infectious Diseases* 2010;51(6):692-699.
30. Hyams C, Yuste J, Bax K, Camberlein E, Weiser JN, Brown JS. Streptococcus pneumoniae resistance to complement-mediated immunity is dependent on the capsular serotype. *Infect Immun* 2010;78(2):716-725.
31. Kaushal N, Kumari S, Jhelum H, Sehgal D. In vitro and in vivo characterization of the interaction, proinflammatory, immunomodulatory and antigenic properties of capsular polysaccharide from streptococcus pneumoniae serotype 1. *International Journal of Biological Macromolecules* 2020;143:521-532.
32. Bergman K, Härnqvist T, Backhaus E, Trollfors B, Dahl MS, Kolberg H, Ockborn G, Andersson R, Karlsson J, Mellgren Å, et al. Invasive pneumococcal disease in persons with predisposing factors is dominated by non-vaccine serotypes in southwest sweden. *BMC Infectious Diseases* 2021;21(1):756.
33. Luck JN, Tettelin H, Orihuela CJ. Sugar-coated killer: Serotype 3 pneumococcal disease. *Frontiers in Cellular and Infection Microbiology* 2020;10.

34. Pande A, Nasir S, Rueda AM, Matejowsky R, Ramos J, Doshi S, Kulkarni P, Musher DM. The incidence of necrotizing changes in adults with pneumococcal pneumonia. *Clinical Infectious Diseases* 2012;54(1):10-16.
35. Azarian T, Mitchell PK, Georgieva M, Thompson CM, Ghouila A, Pollard AJ, von Gottberg A, du Plessis M, Antonio M, Kwambana-Adams BA, et al. Global emergence and population dynamics of divergent serotype 3 cc180 pneumococci. *PLOS Pathogens* 2018;14(11):e1007438.
36. Croucher NJ, Mitchell AM, Gould KA, Inverarity D, Barquist L, Feltwell T, Fookes MC, Harris SR, Dordel J, Salter SJ, et al. Dominant role of nucleotide substitution in the diversification of serotype 3 pneumococci over decades and during a single infection. *PLOS Genetics* 2013;9(10):e1003868.
37. Groves N, Sheppard CL, Litt D, Rose S, Silva A, Njoku N, Rodrigues S, Amin-Chowdhury Z, Andrews N, Ladhani S, et al. Evolution of streptococcus pneumoniae serotype 3 in england and wales: A major vaccine evader. *Genes* 2019;10(11).
38. Cargill TN, Hassan M, Corcoran JP, Harriss E, Asciak R, Mercer RM, McCracken DJ, Bedawi EO, Rahman NM. A systematic review of comorbidities and outcomes of adult patients with pleural infection. *European Respiratory Journal* 2019:1900541.
39. White HD, Henry C, Stock EM, Arroliga AC, Ghamande S. Predicting long-term outcomes in pleural infections. Rapid score for risk stratification. *Annals of the American Thoracic Society* 2015;12(9):1310-1316.
40. Bintcliffe OJ, Hooper CE, Rider IJ, Finn RS, Morley AJ, Zahan-Evans N, Harvey JE, Skyrme-Jones AP, Maskell NA. Unilateral pleural effusions with more than one apparent etiology. A prospective observational study. *Annals of the American Thoracic Society* 2016;13(7):1050-1056.
41. Hasley PB, Albaum MN, Li YH, Fuhrman CR, Britton CA, Marrie TJ, Singer DE, Coley CM, Kapoor WN, Fine MJ. Do pulmonary radiographic findings at presentation predict mortality in patients with community-acquired pneumonia? *Arch Intern Med* 1996;156(19):2206-2212.
42. Dean NC, Jones BE, Jones JP, Ferraro JP, Post HB, Aronsky D, Vines CG, Allen TL, Haug PJ. Impact of an electronic clinical decision support tool for emergency department patients with pneumonia. *Ann Emerg Med* 2015;66(5):511-520.
43. Federici S, Bédar B, Hayau J, Gonzalez M, Triponez F, Krueger T, Karenovics W, Perentes JY. Outcome of parapneumonic empyema managed surgically or by fibrinolysis: A multicenter study. *Journal of Thoracic Disease* 2021;13(11):6381-6389.
44. Wait MA, Sharma S, Hohn J, Dal Nogare A. A randomized trial of empyema therapy. *Chest* 1997;111(6):1548-1551.
45. Hyams C, Williams OM, Williams P. Urinary antigen testing for pneumococcal pneumonia: Is there evidence to make its use uncommon in clinical practice? *ERJ Open Research* 2020;6(1):00223-02019.

## FIGURE LEGENDS

### Figure 1: Study Cohort

Results from 3677 microbiology database occurrences of a positive blood or urine antigen test were identified. There were 2657 cases of pneumococcal infection in adults, including 559 patients with parapneumonic effusions.

### Figure 2: Vaccine group serotype trends in pneumococcal parapneumonic effusions in Bristol, UK 2006-2018

(A) Incidence of pneumococcal parapneumonic effusion (per 100,000 adults), calculated using adult population data from the Office of National Statistics (Supplementary Data 4). (B) proportion of serotyped disease caused by vaccine serotype group as shown from 2006-18. Dashed lines show the introduction of paediatric PCV7 and PCV13.

### Figure 3: 1-year survival in patients with pneumococcal parapneumonic effusions

(A) Kaplan-Meier survival curve and number at risk for patients with simple parapneumonic effusion (SPE) (red line) and pleural infection (blue line). (B) Kaplan-Meier survival curve and number at risk for patients with pneumococcal pleural infection for low (red line), medium (blue line) and high (black line) RAPID score groups. The number of subjects at risk immediately before each time point is listed in a numbers-at-risk table.

## 540 TABLES

541 **Table 1: Clinical features of patients with pneumococcal parapneumonic effusions**

Characteristic	All parapneumonic effusions (N=559)	SPE (N=459)	Pleural infection (N=100)	P value *
<b>Microbiological Confirmation of IPD - N (%)</b>				
Blood culture	283 (51)	236 (51)	47 (47)	0.469
Urinary antigen test	276 (49)	223 (49)	55 (55)	0.277
<b>Pleural Fluid Culture Results</b>				
<i>S. pneumoniae</i> positive	42 (8)	0 (0)	42 (42)	<0.001
Multi-organism positive	15 (3)	0 (0)	15 (15)	<0.001
<b>Demographics</b>				
Male – N (%)	282 (50)	223 (49)	56 (56)	0.205
Female – N (%)	277 (50)	236 (51)	44 (44)	0.205
Age (years) – median (IQR)	68 (50-78)	69 (57-78)	55 (45-74)	<0.001
<b>Smoking Status - N (%)</b>				
Non-smoker	127 (23)	106 (23)	21 (21)	0.732
Current smoker	196 (35)	148 (32)	46 (46)	0.043
Ex-smoker	238 (43)	205 (45)	33 (33)	0.043
<b>Comorbidities – N (%)</b>				
Chronic Lung Disease	245 (44)	201 (43)	44 (44)	0.856
Cardiac Disease	304 (54)	261 (57)	43 (43)	0.011
Upper GI/Swallow Problem	214 (38)	180 (40)	34 (34)	0.265
Cerebrovascular Disease	39 (7)	29 (6)	10 (10)	0.148
Type 2 Diabetes	95 (17)	79 (17)	16 (16)	0.809
Chronic Liver Failure	25 (4)	21 (5)	4 (4)	0.672
Intravenous Drug Usage	24 (4)	17 (4)	7 (7)	0.192
Alcohol excess	53 (9)	38 (8)	15 (15)	0.028
BMI ≤17 or BMI ≥ 35	23 (4)	16 (3)	7 (7)	0.056
<b>CURB65 Score on Admission</b>				
0 N (%)	28 (5)	20 (4)	8 (8)	0.088
1 N (%)	107 (19)	83 (18)	24 (24)	0.167
2 N (%)	139 (25)	112 (24)	27 (27)	0.528
3-5 N (%)	285 (51)	244 (53)	42 (42)	0.046
<b>Investigation Results – median (IQR)</b>				
White cell count, ×10 <sup>9</sup> /L	17.8 (12.1-23.8)	17.0 (12.0-22.7)	20.8 (13.9-27.0)	0.005
Neutrophil count, ×10 <sup>9</sup> /L	14.9 (10.0-20.2)	14.2 (9.9-20.1)	18.5 (10.8-24.1)	0.003
C-reactive protein, mg/dL	215 (133-341)	200 (129-312)	331 (213-412)	<0.001
Albumin, g/L	30 (26-36)	31 (27-36)	29 (23-34.3)	0.666
Urea, mmol/L	9.3 (6.4-13.2)	9.2 (6.5-13.3)	9.7 (6.1-12.8)	0.666
<b>Radiological features</b>				
Bilateral effusion	139 (25)	129 (28)	10 (10)	0.001
<b>Outcomes - N (%)</b>				
Acute renal failure †	198 (35)	170 (37)	28 (28)	0.088
Liver dysfunction #	60 (11)	55 (12)	5 (5)	0.041
ITU admission	110 (20)	92 (20)	18 (18)	0.649
Increased care needed	198 (35)	176 (38)	22 (22)	0.002
Admission days – median (IQR)	11 (6-20)	10 (5-20)	14 (10-21)	<0.001
<b>Mortality</b>				
- Inpatient mortality	71 (13)	60 (13)	11 (11)	0.586
- 30-day mortality	74 (13)	65 (14)	9 (9)	0.180



- 90-day mortality	106 (19)	94 (21)	12 (12)	<b>0.039</b>
- 1-year mortality	150 (26)	134 (29)	16 (16)	<b>0.008</b>

542

543 \* *P*-values represent the result of comparison between SPE and pleural infection groups with  
544 either Fisher's exact test (categorical variables) or the Mann-Whitney U-test (non-parametric  
545 continuous variables)

546 † Acute renal failure was defined as a reduction in renal function (as measured by creatinine  
547 or eGFR), oliguria (<400ml urine per 24h) or clinical diagnosis of acute kidney injury

548 # Liver dysfunction was defined as a transient disorder of hepatic function characterized by  
549 either liver enzymes, or clinical diagnosis of acute liver dysfunction. Other features of acute  
550 liver failure may or may not be present, including jaundice, vomiting, coagulopathy,  
551 hyperbilirubinemia, and increased serum lactate

552

**Table 2: Clinical features of patients with serotype 1 and 3 pneumococcal parapneumonic effusions**

Characteristic	Serotype 1 N = 22	Serotype 3 N = 30	P value
<b>Demographics – N (%)</b>			
Male	13 (59)	16 (53)	0.181
Smoking			
- Current	11 (50)	11 (37)	0.353
- Ex-Smoker	5 (23)	12 (40)	0.201
<b>Age – median (IQR)</b>			
Age (years)	45 (40-69)	75 (62-83)	<b>0.023</b>
<b>Comorbidities – N (%)</b>			
Chronic Lung Disease	10 (46)	12 (40)	0.669
Cardiac Disease	9 (41)	21 (70)	<b>0.038</b>
Upper GI/Swallow Problem	3 (14)	13 (43)	<b>0.027</b>
Cerebrovascular Disease	3 (14)	5 (17)	0.771
Type 2 Diabetes	3 (14)	7 (23)	0.420
Chronic Liver Failure	0 (0)	2 (7)	0.210
Intravenous Drug Usage	1 (5)	1 (3)	0.714
Alcohol excess	2 (9)	4 (13)	0.656
<b>Pleural Features – N (%)</b>			
Pleural Infection	11 (50)	10 (33)	0.221
Loculation	5 (23)	3 (10)	0.205
Pus	4 (18)	6 (20)	0.858
RAPID Group			
- Low	10 (45)	4 (13)	<b>0.011</b>
- Medium	2 (9)	20 (67)	<b>10.001</b>
- High	8 (36)	5 (17)	<b>0.024</b>
<b>Outcomes – N (%)</b>			
Acute renal failure †	17 (77)	13 (43)	<b>0.007</b>
Liver dysfunction #	2 (9)	1 (3)	0.355
ITU admission	4 (18)	6 (20)	0.858
Increased care needed	6 (27)	10 (33)	0.646
<b>30-day mortality</b>	2 (9)	6 (20)	0.282
<b>90-day mortality</b>	3 (14)	11 (37)	0.068
365-day mortality	3 (14)	14 (47)	<b>0.019</b>
Admission days – median (IQR)	11 (5-21)	10 (4-18)	0.368

† Acute renal failure was defined as a reduction in renal function (measured by creatinine or eGFR), oliguria (<400ml urine per 24h) or clinical diagnosis of acute kidney injury

# Liver dysfunction was defined as a transient disorder of hepatic function characterized by either liver enzymes, or clinical diagnosis of acute liver dysfunction. Other features of acute liver failure may or may not be present.

**Table 3: Mortality among 100 Pneumococcal Pleural Infection cases with different clinical features and RAPID severity Scores**

Characteristic	Pleural Infection			
	Total Patients (N=100)	30 Day Mortality N (%)	90 Day Mortality N (%)	365 Day Mortality N (%)
<b>Disease Characteristics</b>				
Pus	59	0 (0)	0 (0)	1 (2)
No Pus	41	9 (22)	12 (29)	12 (29)
Loculation Present	49	8 (16)	10 (20)	12 (25)
No loculation Detected	51	1 (2)	2 (4)	5 (10)
Fibrinolytics used	33	4 (12)	6 (18)	11 (33)
Surgical Management *	29	0 (0)	0 (0)	0 (0)
- Loculation present	23	0 (0)	0 (0)	0 (0)
- No loculation	6	0 (0)	0 (0)	0 (0)
No Surgical Management	71	9 (13)	12 (17)	17 (24)
<b>RAPID Risk Group</b>				
Low	36	1 (3)	1 (3)	3 (8)
Medium	46	2 (4)	3 (7)	4 (9)
High	18	6 (33)	10 (55)	13 (72)

RAPID (Renal, Age, Purulence, Infection source, and Dietary factors) Score 0-2 represents low risk, 3-4 medium risk and 5-7 high risk

\* 18 patients underwent surgery after fibrinolytic usage

**Table 4: Cox Regression Analysis for risk factors in patients with pleural infection**

Analysis	Factor		Beta ( $\beta$ ) estimate	HR	95% CI	P-value
<b>30-day mortality</b>	RAPID Group	Low	-	-	-	-
		Medium	13.52	12.04	0.23-39.87	0.674
		High	28.51	19.33	0.55-92.33	0.638
	Age		-0.002	0.998	0.96-1.05	0.921
	Loculation		1.705	5.502	0.99-103	0.111
<b>90-day mortality</b>	RAPID Group	Low	-	-	-	-
		Medium	0.573	1.773	0.19-38.77	0.642
		High	2.709	15.01	1.24-40.06	<b>0.049</b>
	Age		0.015	1.02	0.97-1.07	0.550
	Loculation		1.582	4.86	1.27-31.87	<b>0.043</b>
<b>365-day mortality</b>	RAPID Group	Low	-	-	-	-
		Medium	0.573	1.773	0.19-38.77	0.642
		High	2.709	15.01	1.24-40.06	<b>0.049</b>
	Age		0.027	1.028	0.99-1.07	0.188
	Loculation		1.041	2.836	1.04-9.00	<b>0.050</b>

Proportional hazard assumptions were tested by visual assessment of the KM survival curve, log(-log) plots and Schoenfeld Residuals (Supplementary Data 7)

**3677** Pneumococcal positive blood cultures or urinary antigen tests

**1020** Multiple positive results per clinical episode

**2657** Pneumococcal Infection Cases

**210** Pneumococcal Infections without Respiratory Infection

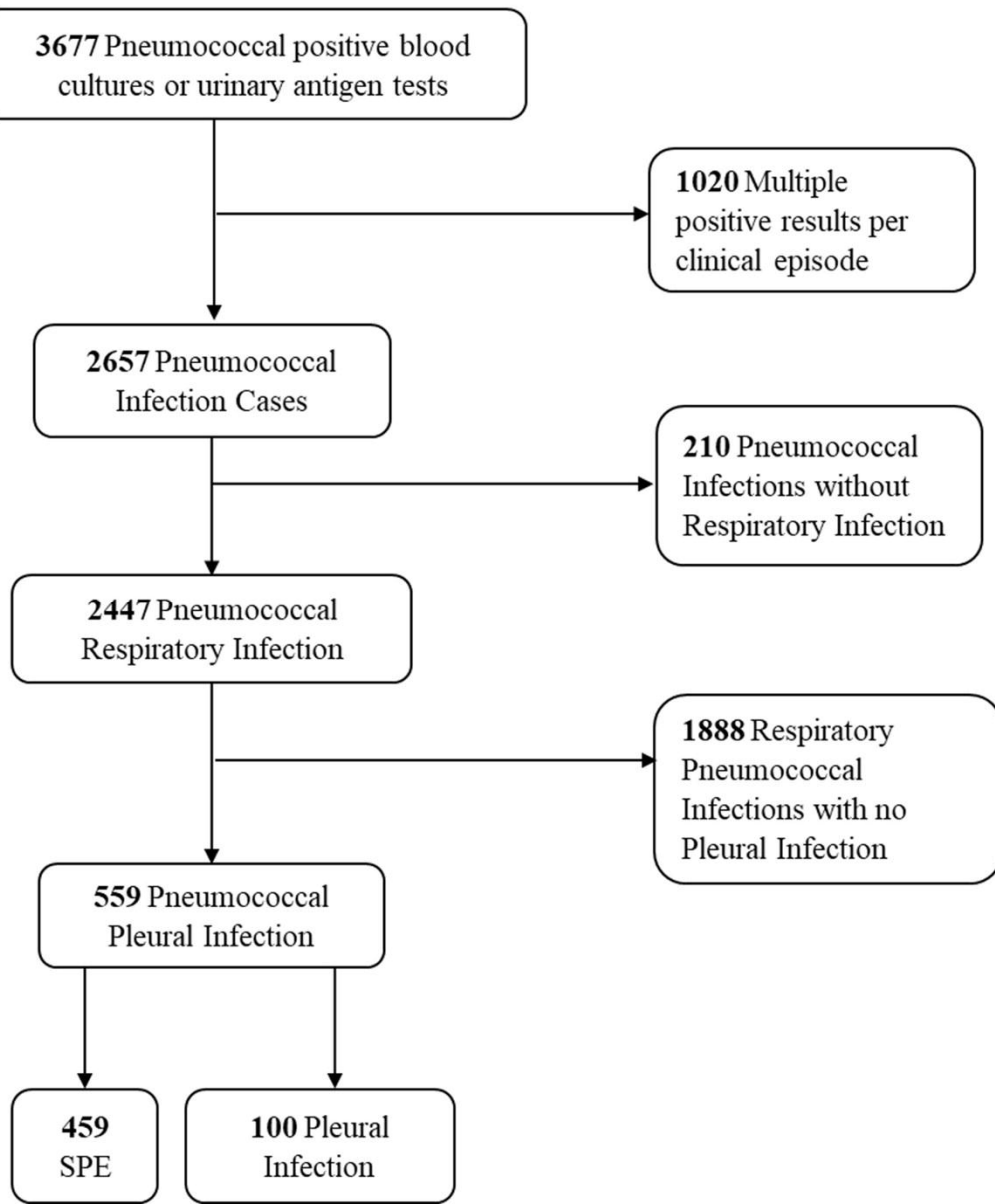
**2447** Pneumococcal Respiratory Infection

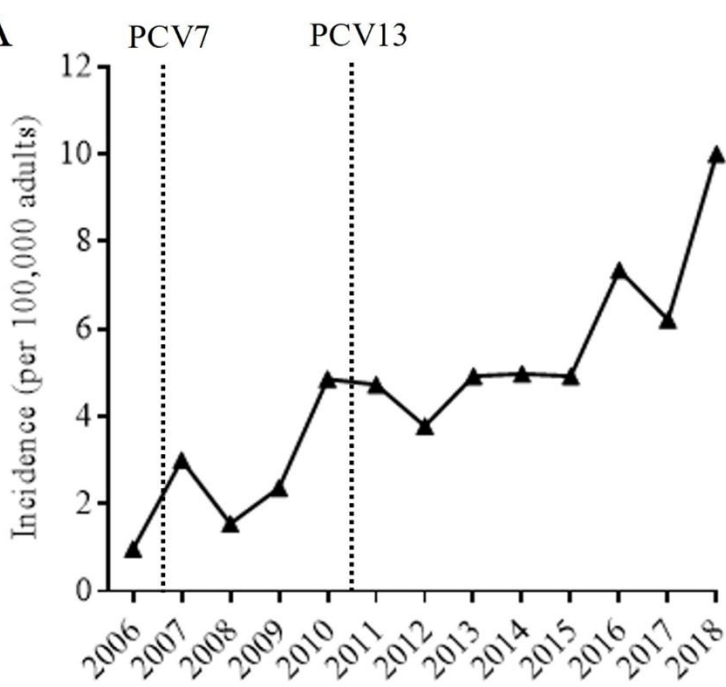
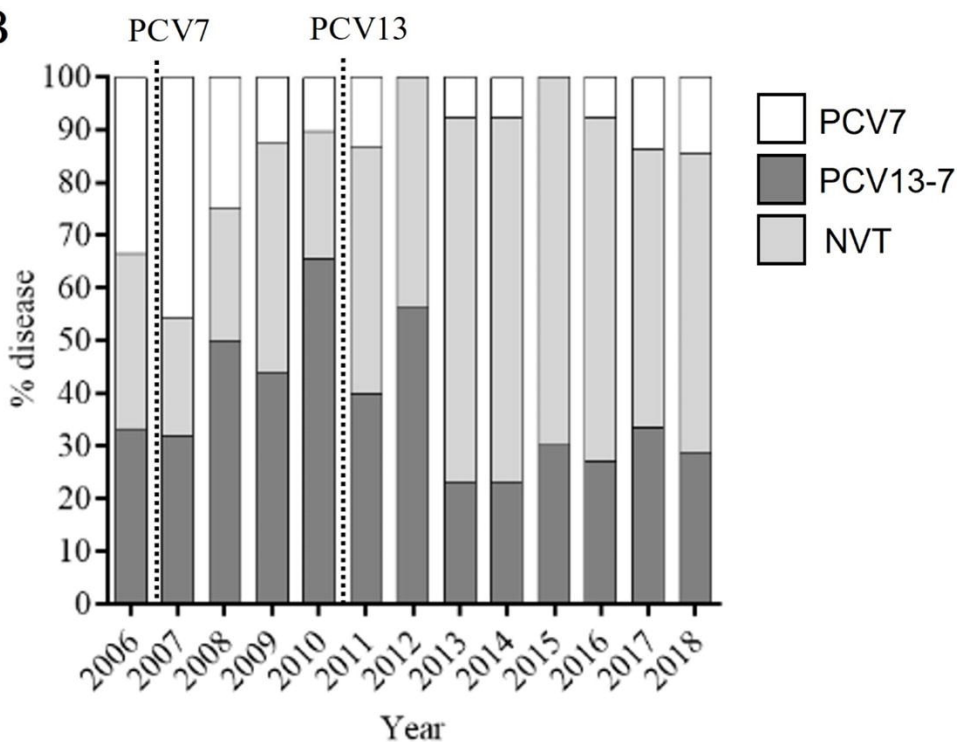
**1888** Respiratory Pneumococcal Infections with no Pleural Infection

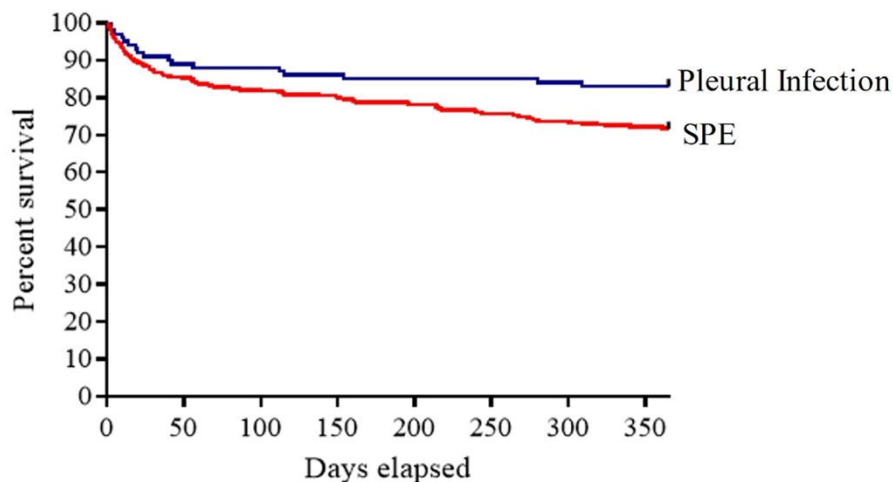
**559** Pneumococcal Pleural Infection

**459** SPE

**100** Pleural Infection

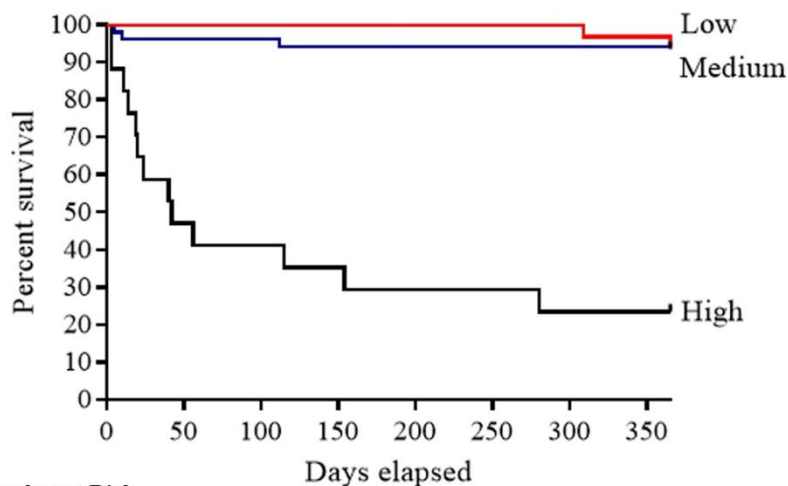


**A****B**



Number at Risk

Days	0	56	112	154	204	250	300	365
SPE	459	385	370	358	346	334	316	309
Pleural infection	100	89	86	85	84	83	82	80



Number at Risk

Days	0	50	112	154	280	310	365
Low	30	30	30	30	30	29	29
Medium	50	48	47	47	47	47	47
High	14	8	7	6	5	4	4