

## Title:

Environmental chemical-wide associations with immune biomarkers in the US: A cross-sectional analysis

## Authors:

Lauren Y. M. Middleton<sup>1,2</sup>, Vy K. Nguyen<sup>2,3,4</sup>, John Dou<sup>1</sup>, Sung Kyun Park<sup>1,2</sup>, Justin A. Colacino<sup>2,5,6,7</sup>, Kelly M. Bakulski<sup>1</sup>

## Affiliations:

<sup>1</sup>Department of Epidemiology, School of Public Health, University of Michigan, Ann Arbor, MI, USA.

<sup>2</sup>Department of Environmental Health Sciences, School of Public Health, University of Michigan, Ann Arbor, MI, USA.

<sup>3</sup>Department of Computational Medicine and Bioinformatics, Medical School, University of Michigan, Ann Arbor, MI, USA.

<sup>4</sup>Department of Biomedical Informatics, Harvard Medical School, Harvard University, Cambridge, MA, USA

<sup>5</sup>Department of Nutritional Sciences, School of Public Health, University of Michigan, Ann Arbor, MI, USA.

<sup>6</sup>Center for Computational Medicine and Bioinformatics, University of Michigan, Ann Arbor, MI, USA.

<sup>7</sup>Program in the Environment, College of Literature, Sciences, and the Arts, University of Michigan, Ann Arbor, MI, USA.

## Abstract

Exposure to environmental chemicals influence immune system functions, and humans are exposed to a wide range of chemicals, termed the chemical exposome. Thus, a comprehensive analysis of the effects across multiple chemical families with immune biomarkers is needed. In this study, we tested the associations between environmental chemicals and immune biomarkers. We analyzed the United States cross-sectional National Health and Nutrition Examination Survey (NHANES 1999-2018). Chemicals were measured in blood or urine (198 chemicals, 17 families). Immune biomarkers included percentages of lymphocytes, neutrophils, monocytes, basophils, and eosinophils, and counts of red blood cells, white blood cells, and mean corpuscular volume. We conducted survey-weighted, multivariable linear regressions of log<sub>2</sub>-transformed chemicals on immune measures, adjusted for age, sex,

race/ethnicity, poverty-income ratio, waist circumference, cotinine concentration, creatinine for urinary chemicals, and survey cycle. We accounted for multiple comparisons using a false discovery rate (FDR). Among 45,528 adult participants, using survey weights, the mean age was 45.7 years, 51.4% were female, and 69.3% were Non-Hispanic White. There were 65 chemicals associated with white blood cell count. For example, a doubling in the concentration of blood lead was associated with a decrease of 61 white blood cells per  $\mu\text{L}$  (95% CI: 23–99; FDR=0.005). 122 (61.6%) chemicals were associated with at least one of the eight immune biomarkers. Chemicals in the Metals family were associated with all eight immune measures. Concentrations of a wide variety of biomarkers of exposure to chemicals such as metals and smoking-related compounds, were highly associated with immune system biomarkers, with implications for immune function and toxicology. This environmental chemical-wide association study identified chemicals from multiple families for further toxicological and epidemiological investigation.

**Keywords:** Immune system biomarkers, Environmental chemicals, Environmental epidemiology

# Introduction

The immune system is dynamic and complex, consisting of diverse cell types with varying forms and function. Proper function of immune cells in the context of a system is essential – as dysregulation has been linked to poor vaccine efficacy, increased susceptibility to infection, autoimmune diseases, and cancer.<sup>1–4</sup> Clinically, immune system function is screened through measurement of blood cell populations, including quantification of lymphocytes, neutrophils, monocytes, basophils, eosinophils, red blood cells (RBCs), white blood cells (WBCs), and measurement of mean corpuscular volume (MCV – a measure of the average volume of RBCs). These immune measures are influenced by several individual-level factors including age,<sup>5,6</sup> sex,<sup>5,7,8</sup> and genetics.<sup>5,9,10</sup> Heritability studies of the variation in these measures estimate that genetics only contribute 25-50% of the population variation.<sup>5,9–11</sup> With a projected 5.08 million deaths due to top infectious diseases in 2030<sup>12</sup> and the current six million (March 2022) global deaths due to COVID-19,<sup>13</sup> it is critical to identify the modifiable environmental risk factors that contribute to altered immune measures.

Environmental chemical exposures can have significant impact on immune system function. Humans are exposed to environmental chemicals through air, water, food, personal care product use, industrial byproducts, or occupation. Chemicals often distribute in the blood stream, thus blood cells and the immune system become a major target for toxicological effects. For example, exposure to heavy metals, pesticides, and per- and polyfluoroalkyl substances (PFAS) are associated with immune cell proportion changes, immunosuppression, and decreased vaccine efficacy.<sup>1,14–19</sup> A significant challenge in understanding how chemicals impact the immune system in humans, however, is the breadth of the possible exposures - there are more than 86,000 chemicals in commercial use in the US alone with poorly characterized immunotoxicity data.<sup>20</sup> The exposome refers to considering the totality of environmental factors a person experiences with their health.<sup>21</sup> While substantial progress has been made in

epidemiological studies documenting associations between a few chemicals or single chemical families and immune measure outcomes,<sup>22</sup> a comprehensive analysis of the effects of chemical exposures across a broad range of chemical families on immune system measures is needed.

To investigate a broad range of chemical exposures with immune biomarkers, our study tested the hypothesis that chemical exposure biomarkers would be associated with altered immune system measures, and more specifically, that chemicals from different families would have distinct patterns of immune marker dysregulation. To accomplish this, we used data from the United States cross-sectional National Health and Nutrition Examination Survey (NHANES) to test the associations between 198 chemical exposure biomarkers from 17 families of chemicals (groups of chemicals that share similar features and/or uses), with 8 immune measures across 45,528 study participants. In an exposomic analysis of the immune system, we 1) quantified associations between individual chemical exposures and specific immune measure alterations, 2) described patterns of chemical co-exposure, and 3) identified the individual chemicals and chemical families with the greatest impact on immune measures.

## Methods

### *Study Participants*

NHANES is a cross-sectional study conducted annually by the United States Centers for Disease Control and Prevention.<sup>23</sup> NHANES is nationally representative of the non-institutionalized, civilian United States population. Data are collected by questionnaire, clinical measurements, as well as health-related biomarker measurements, including those reflecting immune system function and chemical exposures. Data on independent samples of participants are released in cycles every two years. We included ten sets of continuous cycles (1999 – 2018). Data are publicly available and supported by the National Center for Health Statistics (<https://www.cdc.gov/nchs/nhanes/index.htm>). Participants provided written informed consent at



the time of participation. The University of Michigan Institutional Review Board (IRB) approved these secondary data analyses (HUM00116291).

### *Chemical Biomarker Measures*

At the time of the study visit, participants provided urine samples and trained phlebotomists collected participant venous blood in the NHANES Mobile Examination Centers. Complete laboratory methods used to measure the chemical concentrations in blood and urine and immune measures in blood are available.<sup>24</sup>

A total of 495 chemical biomarkers were available for initial analysis. Concentrations of all of the chemical biomarkers were not however, measured in the same cycles or in the same participants. Chemical biomarker measures were cleaned with the same process as previously established (**Figure 1**).<sup>25,26</sup> Specifically, we ensured that there is one unique codename for each chemical biomarker to resolve differences in chemical codenames for the same chemical biomarker. Next, we ensured that units for concentrations were consistent over the study period for each chemical. For lipophilic chemicals measured in blood, we used the lipid-adjusted chemical measures (n=79). We excluded one measurement of urinary 4-(methylnitrosamino)-1-(3-pyridyl)-1-butanol due to no corresponding creatinine measurement for that participant.

We included chemical measures after considering the lower limit of detection (LOD) for each measure based on instrument specifications. NHANES coded measurements below the LOD as the LOD value divided by the square root of two.<sup>27</sup> For chemicals with multiple comment codenames, we ensure that there is one unique comment codename per chemical biomarker. Next, we excluded chemicals with greater than 50% of their measurements below the LOD (n=209). During the study period, advances in laboratory technology influenced detection frequencies for some chemicals. To minimize such influence on our analysis, we excluded measurements that showed large changes in LOD over the study period as previously

described, and used the cycles with the lowest LODs available.<sup>25</sup> For example, the LODs for PCB 196 were 10.50 ng/g for cycle 2 and 0.40 ng/g for cycle 3, thus we excluded measurements from cycle 2. Our analytic sample included 196 chemicals from 17 chemical families. All chemical measures were log<sub>2</sub> transformed for regression analysis. Information about each chemical, including NHANES chemical codenames, full chemical names, survey cycles in which the chemical was measured, chemical family, and limit of detection were provided in

### **Supplemental Table 1.**

#### *Immune Measures*

Complete blood counts with 5-part differentials including MCV measurements were measured in the Mobile Examination Centers for all NHANES cycles with the Beckman Coulter method.<sup>28</sup> The immune measures we included in this study were percentages of basophils, eosinophils, lymphocytes, monocytes, and neutrophils as well as MCV, RBC count, and WBC count. The participants included in our study sample had complete data on all immune measures.

#### *Demographics and Covariates*

The participant covariates age (years), sex (male/female), race/ethnicity (Mexican American, Other Hispanic, Non-Hispanic White, Non-Hispanic Black, Other Race/Multiracial), and poverty-income ratio were collected by interview. We considered the following as reference groups: male, Non-Hispanic White, and the first survey cycle with measurements for each chemical. To protect anonymity, participants who reported an age greater than 85 years until 2006 and greater than 80 years from 2007-2018 were recorded in NHANES as 85 years or 80 years. We used the poverty-income ratio as a proxy for socio-economic status. The poverty-income ratio was calculated as household income divided by the poverty level for that year, adjusted for family size and inflation. Values ranged from 0 – 5 where less than 1 indicated

below the poverty level, and values above 5 were rounded down to 5. Waist circumference (cm), urinary creatinine concentration (mg/dL), and cotinine concentration (ng/mL) of the participants was also collected in the Mobile Examination Centers. Creatinine and cotinine were  $\log_2$  transformed.

### *Statistical Analysis*

All analyses were performed using R version 4.0.0. Code to reproduce data compilation, cleaning, and analyses are available (<https://github.com/bakulskilab>). To account for NHANES complex sampling design, we produced statistics representative of the non-institutionalized, civilian US population by applying survey weights to our statistical models.<sup>26</sup> We selected survey weights corresponding to the smallest analysis subpopulation, and this varied by chemical measure.<sup>29</sup>

For the initial 101,316 participants, we compiled data on covariates (age, sex, race/ethnicity, poverty-income ratio, waist circumference, creatinine, cotinine, and survey cycle), immune system biomarkers (basophil, eosinophil, lymphocyte, monocyte, neutrophil, mean corpuscular volume, red blood cell count, and white blood cell count), and chemical biomarkers (n=486 chemicals). Participants were excluded for missing covariates and white blood cell counts above the maximum LOD. Urinary chemical measurements were excluded when missing creatinine measurements. We excluded creatinine measurements if the value was zero. We also excluded urinary cadmium measurements that were contaminated with molybdenum. We compared descriptive statistics for the demographic and immune measures on included and excluded study samples (**Supplemental Table 2**).

For each chemical, we also calculated descriptive statistics, including participant count, minimum concentration, maximum concentration, mean, standard deviation, median, interquartile range, first and 99<sup>th</sup> percentiles, and percent of measurements above the LOD. To

visualize the distribution of measurements above and below the LOD per chemical, we constructed a stacked bar plot. We created a scatter plot of the number of participants per chemical and percent of measurements above the LOD. To examine correlations between chemicals within and outside of chemical families, we calculated the Spearman correlations of the chemical concentrations and plotted the correlations as a heatmap. To examine correlations between immune measures, we calculated the Spearman correlations of the eight immune measures and plotted the correlations as a heatmap.

To quantify the association between chemical exposures ( $\log_2$ -transformed) and immune measure outcomes, we used survey-weighted generalized linear models that were adjusted for age (continuous), sex (categorical), race/ethnicity (categorical), poverty-income ratio (continuous), waist circumference (continuous),  $\log_2$  urinary creatinine (continuous),  $\log_2$  cotinine (continuous), and survey cycle (categorical) (**Equation 1**). Separate models were used for each pairwise combination of chemical and immune measure. We only included urinary creatinine in the urinary chemical models to adjust for urinary dilution.<sup>25,30</sup> For chemicals that were only measured in only one survey cycle, survey cycle was not included as a covariate in the regression model. Cotinine was used as a covariate to adjust for smoking exposures. Cotinine was also included as one of the chemical exposures, but was not used as an adjustment variable for itself. The beta coefficients from these models were reported in the text and would be interpreted as: a doubling in the chemical concentration was associated with an increase or decrease of x units of the immune measure. To account for multiple comparisons across chemicals and immune biomarkers, we calculated the false discovery rate (FDR),<sup>31</sup> and we considered statistical significance as  $FDR < 0.05$ . To compare the beta coefficients across chemicals with different concentration scales in the figures, we z-score standardized the  $\log_2$ -transformed chemical concentrations and conducted the same generalized linear models using

the standardized,  $\log_2$ -transformed chemical concentrations. The resulting beta coefficients were used to generate the figures.

To identify patterns of association with immune measures within chemical families from the generalized linear models, we created a heatmap of the percent of chemicals significantly associated with each immune measure, separated by chemical family. We visualized the chemical beta coefficients by stratifying the results by immune measure, ordering the chemicals by chemical family, and constructing a forest plot. To visualize the strength of associations between chemical exposures and differences in immune measurements, we created a volcano plot (effect estimate versus  $-\log_{10}$  FDR) for each immune measure.

Several of the chemicals in this analysis were components of cigarette smoke. As a sensitivity analysis to assess associations unadjusted for the smoking biomarker (cotinine), we ran a third set of  $\log_2$ -transformed, z-score standardized, survey-weighted, generalized linear models that were adjusted for age, sex, race/ethnicity, poverty-income ratio, waist circumference,  $\log_2$  urinary creatinine, and survey cycle, but not cotinine. We compared the results from the cotinine adjusted models to those of the non-cotinine adjusted models in a series of Pearson correlation plots for all eight immune measures to quantify the impact of tobacco smoking on our findings.

As a sensitivity analysis, we quantified the associations between age and immune measure using a series of generalized linear models adjusted for age, sex, race/ethnicity, poverty-income ratio, waist circumference,  $\log_2$  urinary creatinine, smoking, and survey cycle.

To understand the likelihood of a participant having a high white blood cell count compared to a normal count with exposure to blood cadmium, cotinine, or copper, we ran three separate survey-weighted logistic regressions. The chemical concentrations were  $\log_2$ -

transformed, and the included covariates were age, sex, race/ethnicity, poverty-income ratio, waist circumference, log<sub>2</sub> cotinine for blood cadmium and copper, and survey cycle.

## Results

### *Study Participant and Chemical Descriptions*

Our analytic sample size was 45,528 participants (**Figure 1**). Among participants, the survey-weighted mean age was 45.7 years (standard deviation: 17.1), 51.4% were female, and 69.3% were Non-Hispanic White (**Table 1**). The median survey-weighted values for most immune measures were within the normal adult range (**Table 2**). The percentage of monocytes, however, was slightly above the normal adult range. Compared to the included participants, excluded participants were younger (mean: 21.6 years,  $p < 0.001$ ), a similar percentage were female (50.8%,  $p = 0.15$ ), and a lower percentage were Non-Hispanic White (56.7%,  $p < 0.001$ ) (**Supplemental Table 2**).

We calculated descriptive statistics for the 198 included chemicals (**Supplemental Table 3**). Three chemicals (cotinine, blood lead, and blood cadmium,) were measured in more than 40,000 participants (**Supplemental Figure 1**). On average, smoking-related chemicals were measured in the most participants (mean=17,532) and PCBs were measured in the fewest (mean=1,365) (**Supplemental Figure 2**). Within the participants for each chemical, 16 chemicals were detected in 100% of participants and 91 chemicals were measured in  $\geq 95\%$  of participants.

### *Chemical Concentration Correlations and Immune Measure Correlations*

We calculated the Spearman correlations between the chemical concentrations (**Figure 2, Supplemental Table 4**). Smoking-related compounds ( $n=4$ ) were highly correlated with themselves (mean  $r=0.88$ ). PAHs ( $n=12$ ) were also highly correlated with themselves (mean

$r=0.75$ ). Conversely, concentrations of metals ( $n=26$ ) had a low correlation with other metals (mean  $r=0.18$ ). The average pairwise correlation across all chemicals was  $r=0.20$ .

We also calculated the Spearman correlations between the immune measures (**Supplemental Figure 3, Supplemental Table 5**). Percentages of lymphocytes and neutrophils were highly inversely correlated ( $r=-0.94$ ). The other immune measures were weakly correlated (absolute value minimum  $r=0.002$ , absolute value maximum  $r=0.37$ ).

### *Linear Regression Analysis*

A total of 122 (61.6%) chemicals were associated ( $FDR<0.05$ ) with at least one of the immune measures (**Figure 3**). All chemicals within families of acrylamides ( $n=2$ ) and other ( $n=4$ ) were associated with at least one immune measure ( $FDR<0.05$ ). Brominated flame retardants were not associated with any immune measure ( $FDR<0.05$ ). Basophils were the least likely immune measure to be associated with chemicals with only 6 (3.0%) of the chemicals associated. RBC count was associated with the highest number of chemicals with 68 (34.3%) chemicals, followed by WBC count with 65 (32.8%) ( $FDR<0.05$ ). Cobalt and N-acetyl-s-(3-hydroxypropyl-1-methyl)-L-cysteine (a VOC) were both associated with all immune measures except basophils (**Figure 4, Supplemental Table 6**). Cotinine and chloroform were associated with six of the eight immune measures.

In the adjusted analysis, we observed 31 (25.0%) chemicals associated with lymphocyte percentage ( $FDR<0.05$ ) (**Figure 3**). Of these, 22 (70.9%) of chemicals were associated with higher levels of lymphocyte percentage. Serum copper and formaldehyde were associated with the lowest and highest percentages of lymphocytes, respectively, with a doubling in the concentration of serum copper associated with 2.6% lower lymphocytes (95% CI: 1.5-3.8%;  $FDR=3.7\times 10^{-4}$ ) and a doubling in the concentration of formaldehyde associated with 2.4% higher lymphocytes (95% CI: 0.8-4.1%;  $FDR=0.02$ ) (**Figure 4, Supplemental Table 6**).

Chemicals in the families of acrylamides (n=1, 50.0%), metals (n=9, 34.6%), pesticides (n=6, 30.0%), smoking-related compounds (n=2, 50.0%), PFAS (n=5, 55.6%), aldehydes (n=1, 14.3%), and other (n=2, 50.05%) were associated with lymphocytes (**Figure 3**). Chemicals with the smallest FDRs were the PFAS chemicals: perfluorooctanoic acid (FDR=3.9x10<sup>-7</sup>), perfluorooctane sulfonic acid (FDR=3.3x10<sup>-6</sup>), and perfluorohexane sulfonic acid (FDR=6.9x10<sup>-6</sup>) (**Supplemental Figure 4**).

In the adjusted analysis, we observed 33 (16.7%) chemicals were associated with neutrophil percentage (FDR<0.05) (**Figure 3**). Of these chemicals, 10 (30.3%) were associated with higher levels of neutrophil percentage. Serum zinc and serum copper were associated with the lowest and highest percentages of neutrophils, respectively, with a doubling in the concentration of serum zinc associated with 2.9% lower neutrophils (95% CI: 1.6-4.2%; FDR=7.4x10<sup>-4</sup>) and a doubling in the concentration of serum copper associated with 3.3% higher neutrophils (95% CI: 2.0-4.6%; FDR=8.4x10<sup>-5</sup>) (**Figure 4, Supplemental Table 6**). Chemicals in the families of acrylamides (n=1, 50.0%), metals (8, 30.8%), phthalates & plasticizers (2, 11.8%), pesticides (n=7, 35.0%), PAHs (2, 16.7%), VOCs (n=4, 16.0%), smoking-related compounds (2, 50.0%), PFAS (n=5, 55.6%), aldehydes (n=1, 14.3%), and other (n=1, 25.0%) were associated with neutrophils (**Figure 3**). Chemicals with the smallest FDRs included cotinine (FDR=2.1x10<sup>-6</sup>), perfluorooctanoic acid (FDR=1.0x10<sup>-5</sup>), and perfluorooctane sulfonic acid (FDR=7.9x10<sup>-5</sup>) (**Supplemental Figure 4**).

In the adjusted analysis, we observed 33 (16.7%) chemicals were associated with monocyte percentages (FDR<0.05) (**Figure 3**). Of these chemicals, 12 (36.4%) were associated with higher levels of monocyte percentage. Serum copper and cobalt were associated with the lowest and highest percentages of monocytes, respectively, with a doubling in the concentration of serum copper associated with 0.4% lower monocytes (95% CI: 0.1-0.6%; FDR=0.005), and a doubling in the concentration of cobalt associated with 0.2% higher monocytes (95% CI: 0.07-



0.3%; FDR=0.009) (**Figure 4, Supplemental Table 6**). Chemicals in the families of acrylamides (n=1, 50.0%), PCBs (n=1, 2.9%), metals (5, 19.2%), pesticides (1, 5.0%), PAHs (n=4, 33.3%), VOCs (9, 36.0%), smoking-related compounds (n=2, 50.0%) and other (1, 25.0%) were associated with monocytes (**Figure 3**). Chemicals with the smallest FDRs included cotinine (FDR=2.9x10<sup>-14</sup>), glycidamide (FDR=1.1x10<sup>-6</sup>), and urinary thiocyanate (FDR=5.4x10<sup>-6</sup>) (**Supplemental Figure 4**).

Basophils (mean=0.7%, sd=0.5%) and eosinophils (mean=2.8, sd=2.0%) were the smallest percentages of total white blood cells. There were 6 (3.0%) chemicals associated with basophil percentage (FDR<0.05). There were 13 (6.6%) chemicals associated with eosinophil percentage (FDR<0.05).

In the adjusted analysis, we observed 65 (32.8%) chemicals were associated with WBC count (FDR<0.05). Of these chemicals, 45 (69.2%) were associated with higher WBC count (**Figure 3**). Serum zinc and serum copper were associated with the lowest and highest WBC counts, respectively, with a doubling in the concentration of serum zinc associated with 1,088 fewer WBCs per  $\mu$ L (95% CI: 662-1,514; FDR=5.8x10<sup>-5</sup>) and a doubling in the concentration of serum copper associated with 952 more WBCs (95% CI: 687-1,217; FDR=1.5x10<sup>-7</sup>) (**Figure 4, Supplemental Table 6**). No chemicals in the BRF or PFR families were associated with WBC count. Chemicals with the smallest FDRs included cotinine (FDR=3.9x10<sup>-64</sup>), 2-fluorene (FDR=1.2x10<sup>-14</sup>), and N-acetyl-S-(2-Carboxyethyl)-L-cysteine (FDR=3.9x10<sup>-11</sup>) (**Supplemental Figure 4**).

In the adjusted analysis, we observed 68 (34.3%) chemicals were associated with RBC count (FDR<0.05). Of these chemicals, 18 (26.5%) were associated with higher RBC count (**Figure 3**). Cobalt and selenium were associated with the lowest and highest RBC count, respectively, with a doubling in the concentration of cobalt associated with 65,329 fewer RBCs per  $\mu$ L (95% CI: 43,794-86,864; FDR=3.7x10<sup>-5</sup>) and a doubling in the concentration of selenium

associated with 321,123 more RBCs (95% CI: 229,443-412,802; FDR=1.1x10<sup>-8</sup>) (**Figure 4, Supplemental Table 6**). No chemicals in the BFRs, furans, and aldehydes families were associated with RBC count. Chemicals with the smallest FDRs included blood lead (FDR=1.3x10<sup>-32</sup>), blood cadmium (FDR=1.2x10<sup>-17</sup>), and blood manganese (FDR=1.7x10<sup>-11</sup>) (**Supplemental Figure 4**).

In the adjusted analysis, we observed 55 (27.8%) chemicals were associated with MCV (FDR<0.05). Of these chemicals, 50 (90.9%) were associated with higher MCV (**Figure 3**). Blood manganese and selenium were associated with the lowest and highest MCV, respectively, with a doubling in the concentration of blood manganese associated with 2.0fL smaller MCV (95% CI: 1.7-2.4fL; FDR=5.2x10<sup>-14</sup>) and a doubling in the concentration of selenium associated with 1.7fL larger MCV (95% CI: 1.0-2.5fL; FDR=4.0x10<sup>-5</sup>) (**Figure 4, Supplemental Table 6**). No chemicals in the BFR, PFR, PCB, dioxin, furan, and pesticide families were associated with MCV. Chemicals with the smallest FDRs included cotinine (FDR=2.6x10<sup>-59</sup>), urinary cobalt (FDR=1.3x10<sup>-16</sup>), and urinary thiocyanate (FDR=1.9x10<sup>-14</sup>) (**Supplemental Figure 4**).

As a sensitivity analysis to assess confounding by cigarette smoke, we compared the z-score standardized chemical beta coefficients from the regressions that included cotinine as a covariate and the regressions that were not adjusted for cotinine (**Supplemental Figure 5**). The correlations for each of the immune measure categories ranged from 0.74 to 0.98 (mean=0.90, p<1.1x10<sup>-35</sup>).

As a sensitivity analysis to compare the effects of a 10-year increase in age compared to increased chemical exposures, we ran generalized linear models for each of the immune measures that did not include chemical exposures as a covariate. A 10-year increase in age was associated with a 0.3 decrease in percent lymphocytes (95% CI: 0.3-0.3; FDR<1.0x10<sup>-316</sup>). A 10-year increase in age was associated with a 0.06 increase in percent neutrophils (95% CI:

0.05-0.07; FDR=2.2x10<sup>-35</sup>). A 10-year increase in age was associated with a 0.2 increase in percent monocytes (95% CI: 0.1-0.2; FDR<1.0x10<sup>-316</sup>). A 10-year increase in age was associated with a 0.01 increase in percent basophils (95% CI: 0.01-0.02; FDR<1.0x10<sup>-316</sup>). A 10-year increase in age was associated with a 0.08 increase in percent eosinophils (95% CI: 0.08-0.08; FDR<1.0x10<sup>-316</sup>). A 10-year increase in age was associated with associated with 12 fewer WBCs per  $\mu$ L (95% CI: 11-12; FDR<1.0x10<sup>-316</sup>). A 10-year increase in age was associated with associated with 5,408 fewer RBCs per  $\mu$ L (95% CI: 5,368-5,449; FDR<1.0x10<sup>-316</sup>). A 10-year increase in age was associated with associated with 0.07fL larger MCV (95% CI: 0.07-0.07; FDR<1.0x10<sup>-316</sup>).

As another sensitivity analysis, we conducted three logistic regressions with exposure to blood cadmium, cotinine, or copper. We observed that for a doubling of the concentration of blood cadmium, there was 1.16 times higher odds (95% CI: 1.09-1.24, p<0.001) of high WBC count compared to normal WBC count. For a doubling of the concentration of cotinine, there was 1.10 times higher odds (95% CI: 1.08-1.11, p<0.001) of high WBC count compared to normal WBC count. For a doubling of the concentration of copper, there was 2.58 times higher odds (95% CI: 1.50-4.43, p=0.001) of high WBC count compared to normal WBC count.

## Discussion

Chemical exposure-linked immune system dysregulation includes poor vaccine efficacy, increased susceptibility to infection, autoimmune diseases, and cancer, but few of the total chemicals that Americans are regularly exposed to have been studied.<sup>1-4</sup> We tested associations between 198 chemical exposures, across 17 chemical families, with eight immune system measures using nationally representative data from 45,528 NHANES participants. We observed 122 (61.6%) chemicals were associated (FDR<0.05) with at least one immune measure. Only percent of lymphocytes and neutrophils were highly correlated ( $r=-0.93$ ), which indicated that each additional immune measure provided new information. Our results showed

that in the US population, exposure to environmental chemicals across 17 chemical families was associated with differences in immune measures.

MCV is a biomarker used to differentiate types of anemia based on the average volume of RBCs.<sup>32</sup> We observed 55 chemicals (27.8%) associated with MCV (FDR<0.05). Prior research on MCV and environmental chemicals have noted conflicting results. In particular, associations between blood lead and MCV have varied depending on the sample size and population.<sup>33</sup> A small study of car battery workers in Iran and study of pregnant women in Mexico both observed no association between blood lead and MCV,<sup>33,34</sup> but another small study of pregnant women in Iran found higher blood levels were associated with lower MCV.<sup>35</sup> Higher blood lead levels of lead recycling workers in Taiwan also were associated with lower MCV.<sup>36</sup> These findings were supported by toxicological research where dosing rats with a mixture of heavy metals including lead decreased MCV after 90 days.<sup>37</sup> In our large, generalizable US sample, we found that a doubling of blood lead concentration was not associated with MCV (FDR<0.05). Based on these observations, MCV may decrease in response to longer-term lead exposure. MCV is measured as part of complete blood panels, and values that are smaller than 80 fL or larger than 100fL can indicate diseases including iron deficiency anemia and copper deficiencies.<sup>32,38</sup> Future studies may investigate the association between environmental chemicals and MCV, adjusting for intake of iron, folate, vitamin B12, and other dietary vitamins and minerals.<sup>39,40</sup> Associations between MCV and environmental chemicals outside of heavy metals have been under-studied and could be a new and interesting direction for research.

A low RBC count is an indicator of anemia while a high RBC count can indicate conditions including chronically low oxygen levels or a hormonal imbalance.<sup>41,42</sup> We observed 68 (34.3%) chemicals were associated with RBC count (FDR<0.05), and 73.5% of those chemicals were associated with lower RBC counts. The directions of associations in the literature were variable. In a sample of lead-exposed workers in Japan, higher blood lead was associated with lower RBC counts,<sup>43</sup> while a study of pregnant women in Iran found no

association between blood lead and RBC counts.<sup>35</sup> Blood lead levels of lead recycling workers in Taiwan were associated with higher RBC counts.<sup>36</sup> Another study using data from NHANES found that, on average, RBC counts were lowest for people with the highest PCB concentrations.<sup>19</sup> The differences in study populations and lead concentrations may explain the variation in the results across these studies. Given our finding of 68 chemicals associated with RBC count, a wider array of chemicals should be tested.

WBC counts are indicative of conditions including infections and inflammation.<sup>42</sup> In our study, the chemicals with the largest absolute value effect estimates for WBCs were copper (increase of 952 WBCs/ $\mu$ L; FDR=1.5x10<sup>-7</sup>) and zinc (decrease of 1,088 WBCs/ $\mu$ L; FDR=5.8x10<sup>-5</sup>) (**Figure 4**). Copper and zinc are essential minerals that are important for immune system functions and can be ingested through food sources or exposed from occupational sources.<sup>44–46</sup> One prior study of 251 adolescents observed that higher copper and zinc concentrations were associated with higher WBC counts.<sup>47</sup> One rat study found no association between zinc and copper deficiency and WBC count,<sup>48</sup> while another found that as zinc intake increased, WBC count decreased.<sup>49</sup> *In vitro* and *in vivo* studies in humans have found that zinc deficiency and high levels of zinc supplementation inhibit immune system functions.<sup>50</sup> Copper deficiency and excessive levels can also result in organ system dysfunctions.<sup>51,52</sup> The NHANES participants had a range of 24.7–306.6 $\mu$ g/dL copper (median: 113.8 $\mu$ g/dL) and 40.9–232.5 $\mu$ g/dL zinc (median: 80.4 $\mu$ g/L). The reference range for serum zinc was 60 – 120 $\mu$ g/dL and the recommended plasma copper range was 70–140 $\mu$ g/dL.<sup>51</sup> In prior research, zinc and copper concentrations were inversely correlated,<sup>51</sup> although we did not find evidence of that in our non-survey-weighted sample ( $r=-0.02$ ,  $p=0.2$ ). NHANES captured both deficiencies and excessive levels of copper and zinc, representing a wide range of nutritional statuses that are associated with WBC counts. Additionally, we found that increased cotinine concentrations, a biomarker of tobacco smoke, were associated with increased WBC counts (FDR=3.9x10<sup>-64</sup>). Following smoking cessation, prior studies observed WBC counts decreased, compared to continued

smokers.<sup>53,54</sup> In addition to being a biomarker of infection and inflammation, WBC counts may also be indicative of nutritional and chemical exposures.

Neutrophils are the largest component of white blood cells and function to phagocytize bacteria and cellular debris.<sup>42,55,56</sup> Although in our NHANES dataset, concentrations of BFRs in blood were not shown to be associated with percentages and counts of immune cells, molecular toxicology studies showed that BFRs affect granulocyte functions.<sup>57,58</sup> Smoking was previously associated with increased neutrophil counts<sup>59</sup> which matches our findings that cotinine was associated with an increase in neutrophil percentage. We found that 7 (35.0%) pesticides were associated with a lower percentage of neutrophils. Previous literature on the associations between pesticide exposures and neutrophil counts have conflicting findings. One study of agricultural workers found decreased neutrophil counts associated with pesticide exposure.<sup>60</sup> Another found no difference in neutrophil count in exposed and unexposed participants.<sup>61</sup> Studies of agricultural workers and hospitalized patients with pesticide poisoning found an increase in neutrophil counts compared to unexposed participants.<sup>62,63</sup> Differences in doses, types of pesticides, and participant populations could all contribute to the range of results. More research is needed on the effects of chemical, particularly pesticide, exposures on neutrophils.

Monocytes are important sources for inflammatory cytokines, and there are rarely disorders that result in abnormalities in only the monocytes.<sup>64</sup> In our study, we observed two (50.0%) smoking-related compounds, 9 (36.0%) VOCs, and 4 (33.3%) PAHs were associated with lower percentages of monocytes. A study of cigarette smokers (exposed to smoking-related compounds, VOCs, and PAHs) found that compared to non-smokers, smoking was associated with lower monocyte counts.<sup>65</sup> In contrast, two other studies observed that smoking or number of cigarettes per day was associated with an increase in monocyte counts.<sup>59,66</sup> It would be of interest to consider mixtures of these chemical families rather than the association of each individual chemical to determine overall effects.

Though chemical concentrations were not always measured in the same participants, we considered the relationships between chemicals and chemical families. In our study, pairwise chemical concentrations in 6 out of 17 chemical families had an average correlation of  $r > 0.5$  (**Figure 2**). Concentrations of chemicals within these chemical families were highly, positively correlated. Examining the average effects for these chemical families (smoking-related compounds, acrylamides, PAHs, furans, BFRs, and PCBs), identifying one indicator chemical from the family, or creating a cumulative measure of the family may be efficient methods to reduce the number of analytical variables.<sup>22,67–69</sup> Conversely, concentrations of metals were less correlated (average  $r = 0.18$ ). The low correlation could be due to the heterogeneous sources of exposure for metals including from the natural environment, diet, and workplace. We observed in the forest plot (**Figure 4**) that the metals had a large spread and variable direction of effect on the immune measures, so the chemical family may require careful consideration when analyzing as a group. Our initial discovery analysis of pairwise chemical and immune marker associations can lead to future studies with advanced mixtures methods.

Our study had some important limitations. NHANES has a cross-sectional survey design, thus chemical and immune biomarkers were only measured in each person one time. We cannot determine temporality or longitudinal trends within each participant. We also cannot determine causality of the relationship between chemical concentrations and immune measure differences. For example, elevated blood lead could increase the RBC count through a molecular mechanism, or if lead is stored in RBCs, an increased RBC count might result in a higher blood lead concentration. In addition, NHANES does not capture long-term exposure for all chemicals. Some chemicals, like phthalates in urine, have a half-life of under an hour, while others such as cadmium in urine and lead in bones have half-lives of almost 30 years.<sup>25</sup> It is possible that this study is affected by a survivorship bias. Potential participants who had the

highest levels of chemical exposures may not have survived to be included in NHANES. Future studies could examine these chemicals in a longitudinal study to measure changes over time.

We excluded chemicals with less than 50% of their measurements beyond the LOD, but it is likely that some of these chemicals would be associated with the immune measures as well. A future analysis could test additional chemicals with immune measures. We used linear regressions to analyze the relationships between chemical exposures and immune measure outcomes, but there is evidence that chemicals have a non-linear association with other outcomes.<sup>70–72</sup> When we examined plots of chemical concentrations and immune measures (data not shown), we observed non-linear associations for a few of the chemicals. Future analyses could test additional exposures and incorporate non-linear analyses into their methods.

We focused on immune biomarkers in our discovery study, and based on these findings, future work may consider additional immune health outcomes. For example, a future environment-wide association study could investigate the associations between chemicals and persistent infections in NHANES, expanding the work of a similar study on four PFAS chemicals.<sup>2</sup> Prior research showed exposure to PCB and PFAS chemicals were associated with decreased antibodies against diphtheria and tetanus vaccines in children, potentially reducing vaccine efficacy.<sup>1,73,74</sup> Our adult analysis had measures of all six PCBs and all five PFAS examined in the childhood and adolescent vaccine efficacy studies. We observed associations between six PCBs and monocytes, RBCs, and WBCs (FDR<0.05). We were not able to differentiate lymphocyte subtypes, so it is possible that B cell proportions decreased and the other subtype proportions increased more, or all subtypes increased in cell count, but these chemicals disrupted antibody production. Future studies could directly measure or estimate the proportions of lymphocyte subtypes, including B cells as well as antibody levels in response to



PCB and PFAS chemical exposures. Other chemical exposures may also be associated with reduced humoral responses to vaccines and could be analyzed using the NHANES dataset.<sup>75</sup>

Several studies have documented associations in humans between a few chemicals or single chemical families and immune measure outcomes<sup>40,59,76–80</sup>, but there has not been a broad analysis of environmental chemical exposures and immune measures in the US. Our results were based on a large, diverse, and nationally representative subset of 45,528 participants from NHANES. The chemical biomarkers were rigorously quantified in urinary and blood biosamples in up to 45,528 participants per chemical with a minimum of 1,117 participants between 1999 and 2018. Our study was the first to broadly examine chemical exposures and immune measures in an exposome framework. We analyzed eight immune measures that were collected for each of these participants. From this study, we identified many chemicals for further toxicological and epidemiological studies. Out of 198 chemicals tested, 122 (61.6%) were associated ( $FDR < 0.05$ ) with at least one immune measure. Members of 16 out of 17 chemical families were associated with at least one immune measure. Globally in 2004, 4.9 million deaths (8.3%) and 86 million Disability-Adjusted Life Years (5.7%) were attributable to environmental chemicals, although this was an underestimate of the full global burden of disease as the study focused on 14 chemicals or groups of chemicals.<sup>81</sup> Identifying chemicals that are associated with the immune system in biologically-relevant doses is an important step to understanding immune system dysregulation, setting health and safety recommendations for these chemicals, and promoting healthier environments.

## Acronyms:

BFR – brominated flame retardant

FDR – false discovery rate

LOD – lower limit of detection

MCV – mean corpuscular volume

PAH – polyaromatic hydrocarbon

PCB – polychlorinated biphenyl

PFAS – polyfluoroalkyl substances

PFR – phosphate flame retardant

RBC – red blood cell

VOC – volatile organic compound

WBC – white blood cell

**Funding:** This research was supported by the National Institutes of Health (R01 AG070897, R01 AG067592, R01 ES028802, P30 ES017885, P30 CA046592, UG3 CA267907).

## References

1. Grandjean P, Heilmann C, Weihe P, Nielsen F, Mogensen UB, Budtz-Jørgensen E. Serum Vaccine Antibody Concentrations in Adolescents Exposed to Perfluorinated Compounds. *Environ Health Perspect.* 2017;125(7):77018. doi:10.1289/EHP275
2. Bulka CM, Avula V, Fry RC. Associations of exposure to perfluoroalkyl substances individually and in mixtures with persistent infections: Recent findings from NHANES 1999–2016. *Environ Pollut.* 2021;275:116619. doi:<https://doi.org/10.1016/j.envpol.2021.116619>
3. Azizi G, Pouyani MR, Abolhassani H, et al. Cellular and molecular mechanisms of immune dysregulation and autoimmunity. *Cell Immunol.* 2016;310:14-26. doi:<https://doi.org/10.1016/j.cellimm.2016.08.012>
4. de Visser KE, Eichten A, Coussens LM. Paradoxical roles of the immune system during cancer development. *Nat Rev Cancer.* 2006;6(1):24-37. doi:10.1038/nrc1782
5. Carr EJ, Dooley J, Garcia-Perez JE, et al. The cellular composition of the human immune system is shaped by age and cohabitation. *Nat Immunol.* 2016;17(4):461-468. doi:10.1038/ni.3371
6. Castelo-Branco C, Soveral I. The immune system and aging: a review. *Gynecol Endocrinol.* 2014;30(1):16-22. doi:10.3109/09513590.2013.852531
7. Dean L. *Blood Groups and Red Cell Antigens [Internet]*. Bethesda, MD; 2005.

8. Mahlknecht U, Kaiser S. Age-related changes in peripheral blood counts in humans. *Exp Ther Med*. 2010;1(6):1019-1025. doi:10.3892/etm.2010.150
9. Brodin P, Jojic V, Gao T, et al. Variation in the human immune system is largely driven by non-heritable influences. *Cell*. 2015;160(1-2):37-47. doi:10.1016/j.cell.2014.12.020
10. De Jager PL, Hacohen N, Mathis D, Regev A, Stranger BE, Benoist C. ImmVar project: Insights and design considerations for future studies of “healthy” immune variation. *Semin Immunol*. 2015;27(1):51-57. doi:https://doi.org/10.1016/j.smim.2015.03.003
11. Orrù V, Steri M, Sole G, et al. Genetic variants regulating immune cell levels in health and disease. *Cell*. 2013;155(1):242-256. doi:10.1016/j.cell.2013.08.041
12. Holmes KK, Bertozzi S, Bloom BR, et al. Major Infectious Diseases: Key Messages from Disease Control Priorities. In: Editors, ed. *Major Infectious Diseases*. 3rd ed. Washington (DC): The International Bank for Reconstruction and Development / The World Bank; 2017. doi:10.1596/978-1-4648-0524-0\_ch1
13. Dong E, Du H, Gardner L. An interactive web-based dashboard to track COVID-19 in real time. *Lancet Infect Dis*. 2020;20(5):533-534. doi:https://doi.org/10.1016/S1473-3099(20)30120-1
14. Tryphonas H. Approaches to detecting immunotoxic effects of environmental contaminants in humans. *Environ Health Perspect*. 2001;109 Suppl(Suppl 6):877-884. doi:10.1289/ehp.01109s6877
15. Roller LD. Some Immunological Effects of Lead, Cadmium and Methylmercury. *Drug Chem Toxicol*. 1979;2(1-2):99-110. doi:10.3109/01480547908993184
16. Mishra KP. Lead exposure and its impact on immune system: A review. *Toxicol Vitro*. 2009;23(6):969-972. doi:https://doi.org/10.1016/j.tiv.2009.06.014
17. Mirkov I, Popov Aleksandrov A, Ninkov M, et al. Immunotoxicology of cadmium: Cells of the immune system as targets and effectors of cadmium toxicity. *Food Chem Toxicol*. 2021;149:112026. doi:https://doi.org/10.1016/j.fct.2021.112026
18. Oulhote Y, Shamim Z, Kielsen K, et al. Children’s white blood cell counts in relation to developmental exposures to methylmercury and persistent organic pollutants. *Reprod Toxicol*. 2017;68:207-214. doi:https://doi.org/10.1016/j.reprotox.2016.08.001
19. Serdar B, LeBlanc WG, Norris JM, Dickinson LM. Potential effects of polychlorinated biphenyls (PCBs) and selected organochlorine pesticides (OCPs) on immune cells and blood biochemistry measures: a cross-sectional assessment of the NHANES 2003-2004 data. *Environ Heal*. 2014;13(1):114. doi:10.1186/1476-069X-13-114
20. Environmental Protection Agency. About the TSCA Chemical Substance Inventory. <https://www.epa.gov/tsca-inventory/about-tsca-chemical-substance-inventory>. Published 2021. Accessed June 8, 2021.
21. Vermeulen R, Schymanski EL, Barabási A-L, Miller GW. The exposome and health: Where chemistry meets biology. *Science*. 2020;367(6476):392-396. doi:10.1126/science.aay3164
22. Dominici F, Peng RD, Barr CD, Bell ML. Protecting human health from air pollution: shifting from a single-pollutant to a multipollutant approach. *Epidemiology*. 2010;21(2):187-194. doi:10.1097/EDE.0b013e3181cc86e8

23. Chen T, Clark J, Riddles M, Mohadjer L, Fakhouri T. *National Health and Nutrition Examination Survey, 2015–2018: Sample Design and Estimation Procedures*. Vol 2. Hyattsville; 2020.
24. Centers for Disease Control and Prevention. NHANES Laboratory Data. National Health and Nutrition Examination Survey. <https://wwwn.cdc.gov/nchs/nhanes/search/datapage.aspx?Component=Laboratory>. Published 2021.
25. Nguyen VK, Colacino JA, Arnot JA, Kvasnicka J, Jolliet O. Characterization of age-based trends to identify chemical biomarkers of higher levels in children. *Environ Int*. 2019;122:117-129. doi:<https://doi.org/10.1016/j.envint.2018.10.042>
26. Nguyen VK, Kahana A, Heidt J, et al. A comprehensive analysis of racial disparities in chemical biomarker concentrations in United States women, 1999–2014. *Environ Int*. 2020;137:105496. doi:<https://doi.org/10.1016/j.envint.2020.105496>
27. Department of Health and Human Services, Centers for Disease Control and Prevention (CDC). *Fourth National Report on Human Exposure to Environmental Chemicals*.; 2009.
28. Storandt R. Laboratory Procedure Manual - Complete Blood Count. <https://wwwn.cdc.gov/nchs/data/nhanes/2017-2018/labmethods/CBC-J-MET-508.pdf>. Published 2019.
29. National Health and Nutrition Examination Survey. Module 3: Weighting. CDC/National Center for Health Statistics. <https://wwwn.cdc.gov/nchs/nhanes/tutorials/Module3.aspx>. Published 2018.
30. B. BD, C. WL, P. CS, J. GA, L. NL, L. PJ. Urinary Creatinine Concentrations in the U.S. Population: Implications for Urinary Biologic Monitoring Measurements. *Environ Health Perspect*. 2005;113(2):192-200. doi:10.1289/ehp.7337
31. Benjamini Y, Hochberg Y. Controlling the False Discovery Rate: A Practical and Powerful Approach to Multiple Testing. *J R Stat Soc Ser B*. 1995;57(1):289-300.
32. Maner BS, Moosavi L. *Mean Corpuscular Volume*. Treasure Island: StatPearls Publishing; 2020.
33. La-Llave-León O, Lugo-Soto R, Aguilar-Durán M, et al. Relationship Between Blood Lead Levels and Hematological Indices in Pregnant Women. *Women Health*. 2015;55(1):90-102. doi:10.1080/03630242.2014.972019
34. Keramati MR, Sadeghian MH, Mood M. Correlation Between Iron Deficiency and Lead Intoxication in the Workers of a Car Battery Plant. *Int J Hematol Oncol*. 2010;20(3):169-174.
35. Amir Ali Akbari S, Dabirioskoei A, Nasiri M, Bayat F. Study of the Relationship between Blood Lead Level and Complete Blood Counts in Pregnant Women. *Prev Care Nurs Midwifery*. 2018;8(1):55-60. doi:10.29252/pcnm.8.1.55
36. Chen C-J, Lin T-Y, Wang C-L, Ho C-K, Chuang H-Y, Yu H-S. Interactive Effects between Chronic Lead Exposure and the Homeostatic Iron Regulator Transport HFE Polymorphism on the Human Red Blood Cell Mean Corpuscular Volume (MCV). *Int J Environ Res Public Heal*. 2019;16(3). doi:10.3390/ijerph16030354
37. Jadhav SH, Sarkar SN, Ram GC, Tripathi HC. Immunosuppressive Effect of Subchronic

- Exposure to a Mixture of Eight Heavy Metals, Found as Groundwater Contaminants in Different Areas of India, Through Drinking Water in Male Rats. *Arch Environ Contam Toxicol.* 2007;53(3):450-458. doi:10.1007/s00244-006-0177-1
38. Chernecky C, Berger B. *Laboratory Tests and Diagnostic Procedures*. 6th ed. Saunders; 2012.
39. Gamaldo AA, Ferrucci L, Rifkind J, Longo DL, Zonderman AB. Relationship between mean corpuscular volume and cognitive performance in older adults. *J Am Geriatr Soc.* 2013;61(1):84-89. doi:10.1111/jgs.12066
40. Peters JL, Perry MJ, McNeely E, Wright RO, Heiger-Bernays W, Weuve J. The association of cadmium and lead exposures with red cell distribution width. *PLoS One.* 2021;16(1):e0245173.
41. Pincus MR, Abraham NZ. Interpreting Laboratory Results. In: Karcher DS, ed. *Henry's Clinical Diagnosis and Management by Laboratory Methods*. 23rd ed. St. Louis, MO: Elsevier; 2017.
42. George-Gay B, Parker K. Understanding the complete blood count with differential. *J PeriAnesthesia Nurs.* 2003;18(2):96-117. doi:https://doi.org/10.1053/jpan.2003.50013
43. Karita K, Yano E, Dakeishi M, Iwata T, Murata K. Benchmark Dose of Lead Inducing Anemia at the Workplace. *Risk Anal.* 2005;25(4):957-962. doi:https://doi.org/10.1111/j.1539-6924.2005.00652.x
44. Ferencík M, Ebringer L. Modulatory effects of selenium and zinc on the immune system. *Folia Microbiol (Praha).* 2003;48(3):417. doi:10.1007/BF02931378
45. Prohaska JR, Lukasewycz OA. Effects of Copper Deficiency on the Immune System. In: Bendich A, Phillips M, Tengerdy RP, eds. *Antioxidant Nutrients and Immune Functions*. Boston, MA: Springer US; 1990:123-143. doi:10.1007/978-1-4613-0553-8\_11
46. White PJ, Broadley MR. Biofortification of crops with seven mineral elements often lacking in human diets – iron, zinc, copper, calcium, magnesium, selenium and iodine. *New Phytol.* 2009;182(1):49-84. doi:https://doi.org/10.1111/j.1469-8137.2008.02738.x
47. Choi JW, Kim SK. Relationships of Lead, Copper, Zinc, and Cadmium Levels versus Hematopoiesis and Iron Parameters in Healthy Adolescents. *Ann Clin Lab Sci.* 2005;35(4):428-434.
48. Murthy L, Petering HG. Effect of dietary zinc and copper interrelationships on blood parameters of the rat. *J Agric Food Chem.* 1976;24(4):808-811. doi:10.1021/jf60206a048
49. Petering HG, Johnson MA, Stemmer KL. Studies of Zinc Metabolism in the Rat. *Arch Environ Heal An Int J.* 1971;23(2):93-101. doi:10.1080/00039896.1971.10665962
50. Ibs K-H, Rink L. Zinc-Altered Immune Function. *J Nutr.* 2003;133(5):1452S-1456S. doi:10.1093/jn/133.5.1452S
51. Smith LD, Garg U. Chapter 17 - Disorders of trace metals. In: Garg U, Smith LDBT-B in IE of M, eds. *Biomarkers in Inborn Errors of Metabolism: Clinical Aspects and Laboratory Determination*. San Diego: Elsevier; 2017:399-426. doi:https://doi.org/10.1016/B978-0-12-802896-4.00015-8
52. Ellingsen DG, Møller LB, Aaseth J. Chapter 35 - Copper. In: Nordberg GF, Fowler BA,



- Nordberg MBT-H on the T of M (Fourth E, eds. *Handbook on the Toxicology of Metals*. 4th ed. San Diego: Academic Press; 2015:765-786. doi:<https://doi.org/10.1016/B978-0-444-59453-2.00035-4>
53. Haustein KO, Krause J, Haustein H, Rasmussen T, Cort N. Changes in hemorheological and biochemical parameters following short-term and long-term smoking cessation induced by nicotine replacement therapy (NRT). *Int J Clin Pharmacol Ther*. 2004;42(2):83-92. doi:10.5414/cpp42083
54. Abel GA, Hays JT, Decker PA, Croghan GA, Kuter DJ, Rigotti NA. Effects of Biochemically Confirmed Smoking Cessation on White Blood Cell Count. *Mayo Clin Proc*. 2005;80(8):1022-1028. doi:<https://doi.org/10.4065/80.8.1022>
55. Borregaard N. Disorders of Neutrophil Function. In: Kaushansky K, Lichtman MA, Prchal JT, et al., eds. *Williams Hematology*, 9e. New York, NY: McGraw-Hill Education; 2015.
56. Dale DC, Welte K. Neutropenia and Neutrophilia. In: Kaushansky K, Lichtman MA, Prchal JT, et al., eds. *Williams Hematology*, 9e. New York, NY: McGraw-Hill Education; 2015.
57. Fonnum F, Mariussen E, Reistad T. Molecular Mechanisms Involved in the Toxic Effects of Polychlorinated Biphenyls (PCBs) and Brominated Flame Retardants (BFRs). *J Toxicol Environ Heal Part A*. 2006;69(1-2):21-35. doi:10.1080/15287390500259020
58. Reistad T, Mariussen E. A Commercial Mixture of the Brominated Flame Retardant Pentabrominated Diphenyl Ether (DE-71) Induces Respiratory Burst in Human Neutrophil Granulocytes In Vitro. *Toxicol Sci*. 2005;87(1):57-65. doi:10.1093/toxsci/kfi222
59. Pedersen KM, Çolak Y, Ellervik C, Carl HH, Bojesen SE, Nordestgaard BG. Smoking and Increased White and Red Blood Cells. *Arterioscler Thromb Vasc Biol*. 2019;39(5):965-977. doi:10.1161/ATVBAHA.118.312338
60. Fareed M, Pathak MK, Bihari V, Kamal R, Srivastava AK, Kesavachandran CN. Adverse Respiratory Health and Hematological Alterations among Agricultural Workers Occupationally Exposed to Organophosphate Pesticides: A Cross-Sectional Study in North India. *PLoS One*. 2013;8(7):e69755.
61. Nassar AMK, Salim YM, Malhat FM. Assessment of Pesticide Residues in Human Blood and Effects of Occupational Exposure on Hematological and Hormonal Qualities. *Pakistan J Biol Sci PJBS*. 2016;19(3):95-105. doi:10.3923/pjbs.2016.95.105
62. García-García CR, Parrón T, Requena M, Alarcón R, Tsatsakis AM, Hernández AF. Occupational pesticide exposure and adverse health effects at the clinical, hematological and biochemical level. *Life Sci*. 2016;145:274-283. doi:<https://doi.org/10.1016/j.lfs.2015.10.013>
63. Dundar ZD, Ergin M, Koçlu R, Ozer R, Cander B, Gunaydin YK. Neutrophil-lymphocyte ratio in patients with pesticide poisoning. *J Emerg Med*. 2014;47(3):286-293. doi:10.1016/j.jemermed.2014.01.034
64. Lichtman MA. Classification and Clinical Manifestations of Disorders of Monocytes and Macrophages. In: Kaushansky K, Lichtman MA, Prchal JT, et al., eds. *Williams Hematology*, 9e. New York, NY: McGraw-Hill Education; 2015.
65. Jensen EJ, Pedersen B, Narvestadt E, Dahl R. Blood eosinophil and monocyte counts are related to smoking and lung function. *Respir Med*. 1998;92(1):63-69. doi:[https://doi.org/10.1016/S0954-6111\(98\)90034-8](https://doi.org/10.1016/S0954-6111(98)90034-8)

66. Schwartz J, Weiss ST. Cigarette smoking and peripheral blood leukocyte differentials. *Ann Epidemiol.* 1994;4(3):236-242. doi:[https://doi.org/10.1016/1047-2797\(94\)90102-3](https://doi.org/10.1016/1047-2797(94)90102-3)
67. Hassanin NM, Awad OM, El-Fiki S, Abou-Shanab RAI, Abou-Shanab ARA, Amer RA. Association between exposure to pesticides and disorder on hematological parameters and kidney function in male agricultural workers. *Environ Sci Pollut Res.* 2018;25(31):30802-30807. doi:10.1007/s11356-017-8958-9
68. Cave M, Appana S, Patel M, Falkner KC, McClain CJ, Brock G. Polychlorinated biphenyls, lead, and mercury are associated with liver disease in American adults: NHANES 2003-2004. *Environ Health Perspect.* 2010;118(12):1735-1742. doi:10.1289/ehp.1002720
69. Wahlang B, Appana S, Falkner KC, McClain CJ, Brock G, Cave MC. Insecticide and metal exposures are associated with a surrogate biomarker for non-alcoholic fatty liver disease in the National Health and Nutrition Examination Survey 2003-2004. *Environ Sci Pollut Res Int.* 2020;27(6):6476-6487. doi:10.1007/s11356-019-07066-x
70. Hill CE, Myers JP, Vandenberg LN. Nonmonotonic Dose-Response Curves Occur in Dose Ranges That Are Relevant to Regulatory Decision-Making. *Dose Response.* 2018;16(3):1559325818798282-1559325818798282. doi:10.1177/1559325818798282
71. Bleys J, Navas-Acien A, Guallar E. Serum Selenium Levels and All-Cause, Cancer, and Cardiovascular Mortality Among US Adults. *Arch Intern Med.* 2008;168(4):404-410. doi:10.1001/archinternmed.2007.74
72. Wang G, Tang W-Y, Wills-Karp M, et al. A Nonlinear Relation Between Maternal Red Blood Cell Manganese Concentrations and Child Blood Pressure at Age 6–12 y: A Prospective Birth Cohort Study. *J Nutr.* 2021;151(3):570-578. doi:10.1093/jn/nxaa368
73. Heilmann C, Budtz-Jørgensen E, Nielsen F, Heinzow B, Weihe P, Grandjean P. Serum Concentrations of Antibodies Against Vaccine Toxoids in Children Exposed Perinatally to Immunotoxicants. *Environ Health Perspect.* 2010;118(10):1434-1438. doi:10.1289/ehp.1001975
74. Grandjean P, Andersen EW, Budtz-Jørgensen E, et al. Serum Vaccine Antibody Concentrations in Children Exposed to Perfluorinated Compounds. *JAMA.* 2012;307(4):391-397. doi:10.1001/jama.2011.2034
75. Kielsen K, Shamim Z, Ryder LP, Grandjean P, Heilmann C. Vaccination efficacy and environmental pollution. In: Esser C, ed. *Environmental Influences on the Immune System.* Vienna: Springer Vienna; 2016:181-203. doi:10.1007/978-3-7091-1890-0\_8
76. Weisglas-Kuperus N, Patandin S, Berbers GA, et al. Immunologic effects of background exposure to polychlorinated biphenyls and dioxins in Dutch preschool children. *Environ Health Perspect.* 2000;108(12):1203-1207. doi:10.1289/ehp.001081203
77. Doherty BT, Kwok RK, Curry MD, et al. Associations between blood BTEXS concentrations and hematologic parameters among adult residents of the U.S. Gulf States. *Environ Res.* 2017;156:579-587. doi:10.1016/j.envres.2017.03.048
78. Malenica M, Prnjavorac B, Bego T, et al. Effect of Cigarette Smoking on Haematological Parameters in Healthy Population. *Med Arch (Sarajevo, Bosnia Herzegovina).* 2017;71(2):132-136. doi:10.5455/medarh.2017.71.132-136
79. Tollerud DJ, Brown LM, Blattner WA, Mann DL, Pankiw-Trost L, Hoover RN. T Cell

Subsets in Healthy Black Smokers and Nonsmokers: Evidence for Ethnic Group as an Important Response Modifier. *Am Rev Respir Dis*. 1991;144(3\_pt\_1):612-616.  
doi:10.1164/ajrccm/144.3\_Pt\_1.612

80. Karakaya A, Yücesoy B, Sardas OS. An immunological study on workers occupationally exposed to cadmium. *Hum Exp Toxicol*. 1994;13(2):73-75.  
doi:10.1177/096032719401300202
81. Prüss-Ustün A, Vickers C, Haefliger P, Bertollini R. Knowns and unknowns on burden of disease due to chemicals: a systematic review. *Environ Health*. 2011;10:9.  
doi:10.1186/1476-069X-10-9



## Equation, Tables, and Figures

### Equation 1.

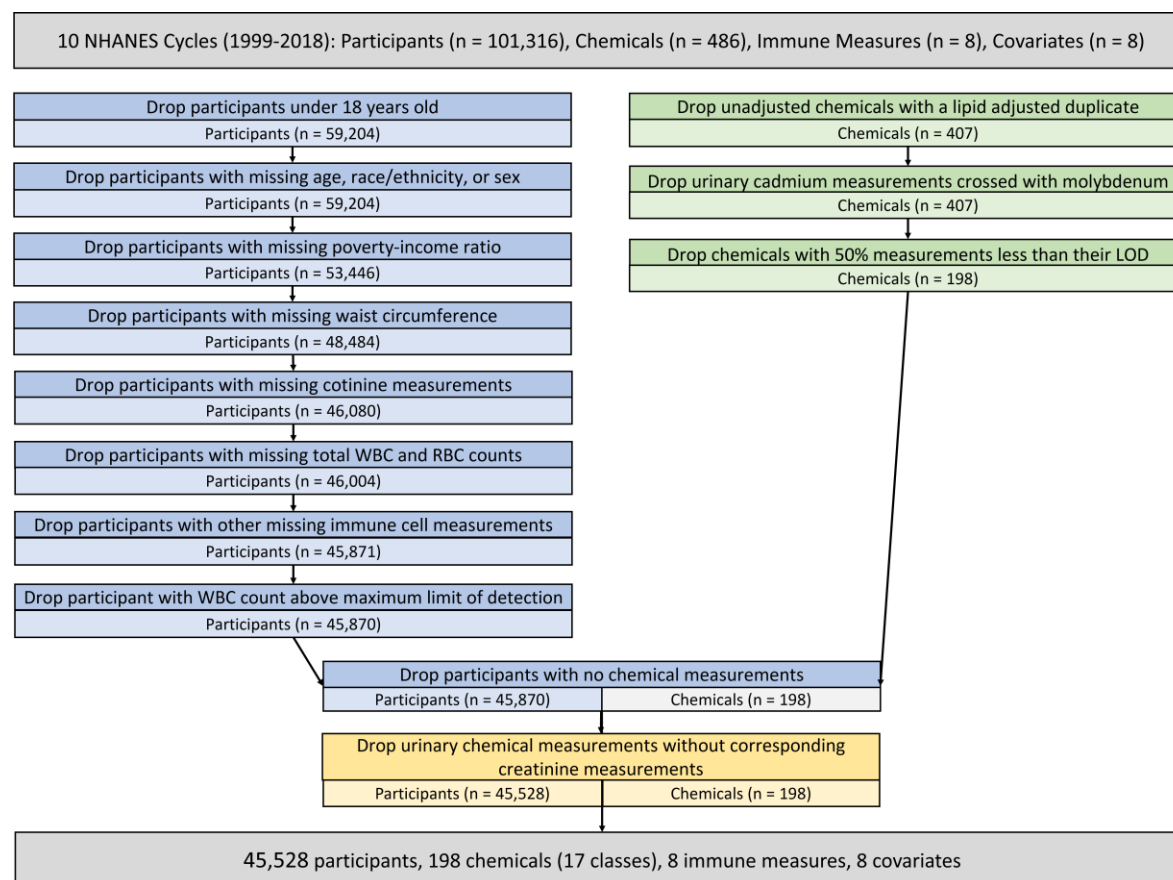
$$\begin{aligned} \text{Immune Measure} = & \beta_{\log 2(\text{chemical measurement})} X_{\log 2(\text{chemical measurement})} + \\ & \beta_{\text{Race/Ethnicity}} X_{\text{Race/Ethnicity}} + \\ & \beta_{\text{Age}} X_{\text{Age}} + \\ & \beta_{\text{Sex}} X_{\text{Sex}} + \\ & \beta_{\text{Poverty-Income Ratio}} X_{\text{Poverty-Income Ratio}} + \\ & \beta_{\text{Waist Circumference}} X_{\text{Waist Circumference}} + \\ & \beta_{\log 2(\text{Creatinine})} X_{\log 2(\text{Creatinine})} + \\ & \beta_{\log 2(\text{Cotinine})} X_{\log 2(\text{Cotinine})} + \\ & \beta_{\text{Survey Cycle}} X_{\text{Survey Cycle}} + \\ & \alpha \end{aligned}$$

**Table 1.** Survey-weighted descriptive statistics for participants (n=45,528). The participant counts were not survey weighted, and the percentages were survey weighted. The mean, standard deviation (sd), median, interquartile range (IQR), and range were calculated for the continuous variables.

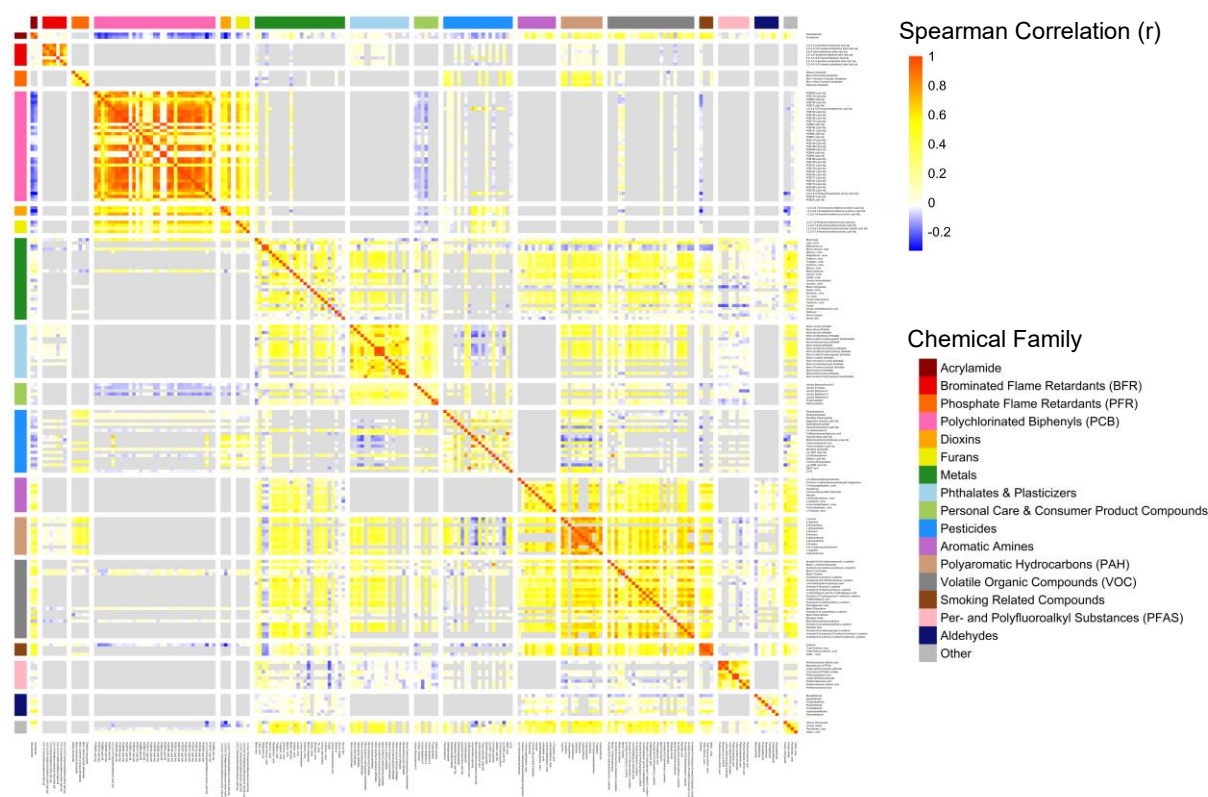
	Count (%)	Mean (sd)	Median (IQR)	Range
<b>Sex</b>				
Female	23,320 (51.4%)			
Male	22,208 (48.6%)			
<b>Race/Ethnicity</b>				
Non-Hispanic White	20,283 (69.3%)			
Non-Hispanic Black	9,232 (10.4%)			
Mexican American	8,341 (8.2%)			
Other Race	4,099 (6.7%)			
Other Hispanic	3,573 (5.4%)			
<b>Age (years)</b>		45.7 (17.1)	45.0 (27.0)	18.0 - 85.0
<b>Family Poverty-Income Ratio</b>		3.0 (1.6)	3.0 (3.5)	0.0 - 5.0
<b>Waist Circumference (cm)</b>		98.0 (16.3)	96.8 (21.9)	55.5 - 179.0
<b>Urinary Creatinine (mg/dL)</b>		124.6 (80.8)	111.0 (109.0)	3.5 - 800.0
<b>Smoking (ng/mL)</b>		59.1 (127.0)	0.0 (18.9)	0.0 - 1,820.0

**Table 2.** Descriptive statistics for survey-weighted immune measures (n=45,528). The mean, standard deviation (sd), median, interquartile range (IQR), and range were calculated for each immune measure. The normal range of each immune measure was reported for adults.<sup>1</sup>

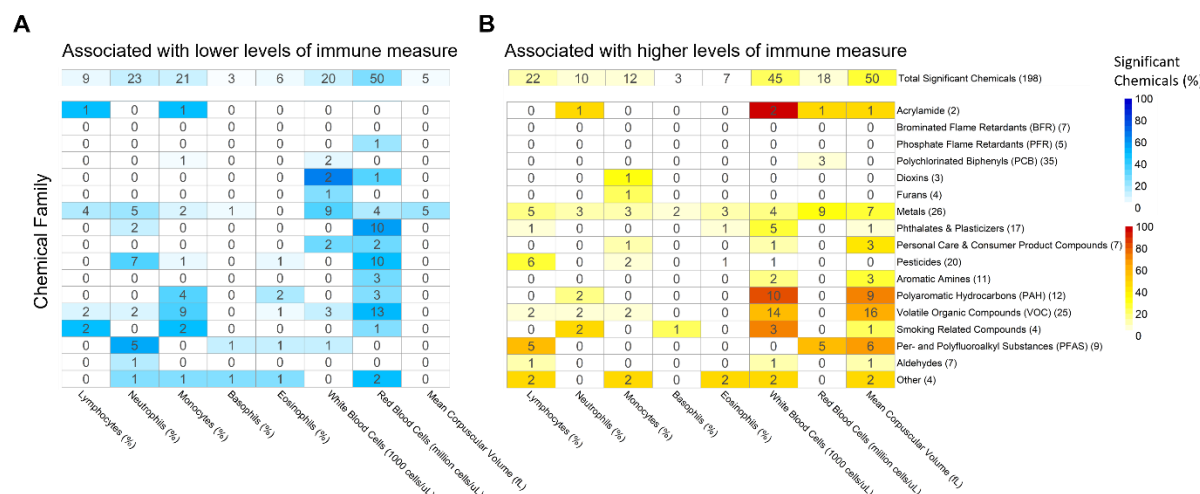
Variable	Mean (sd)	Median (IQR)	Range	Adult Normal Range
<b>Lymphocytes (%)</b>	30.1 (8.1)	29.8 (10.5)	2.7 - 94.5	25 - 33
<b>Neutrophils (%)</b>	58.4 (9.1)	58.8 (11.8)	0.8 - 96.6	54 - 62
<b>Monocytes (%)</b>	8.0 (2.3)	7.8 (2.7)	0.6 - 66.9	3 - 7
<b>Basophils (%)</b>	0.7 (0.5)	0.6 (0.5)	0.0 - 35.4	< 0.75
<b>Eosinophils (%)</b>	2.8 (2.0)	2.3 (2.0)	0.0 - 57.2	1 - 3
<b>White Blood Cells (1000 cells/<math>\mu</math>L)</b>	7.3 (2.3)	6.9 (2.7)	1.4 - 117.2	4.5 - 11
<b>Red Blood Cells (million cells/<math>\mu</math>L)</b>	4.7 (0.5)	4.7 (0.6)	2.3 - 8.3	4 - 6.2
<b>Mean Corpuscular Volume (fL)</b>	89.7 (5.4)	90.0 (6.0)	35.4 - 125.3	82 - 93



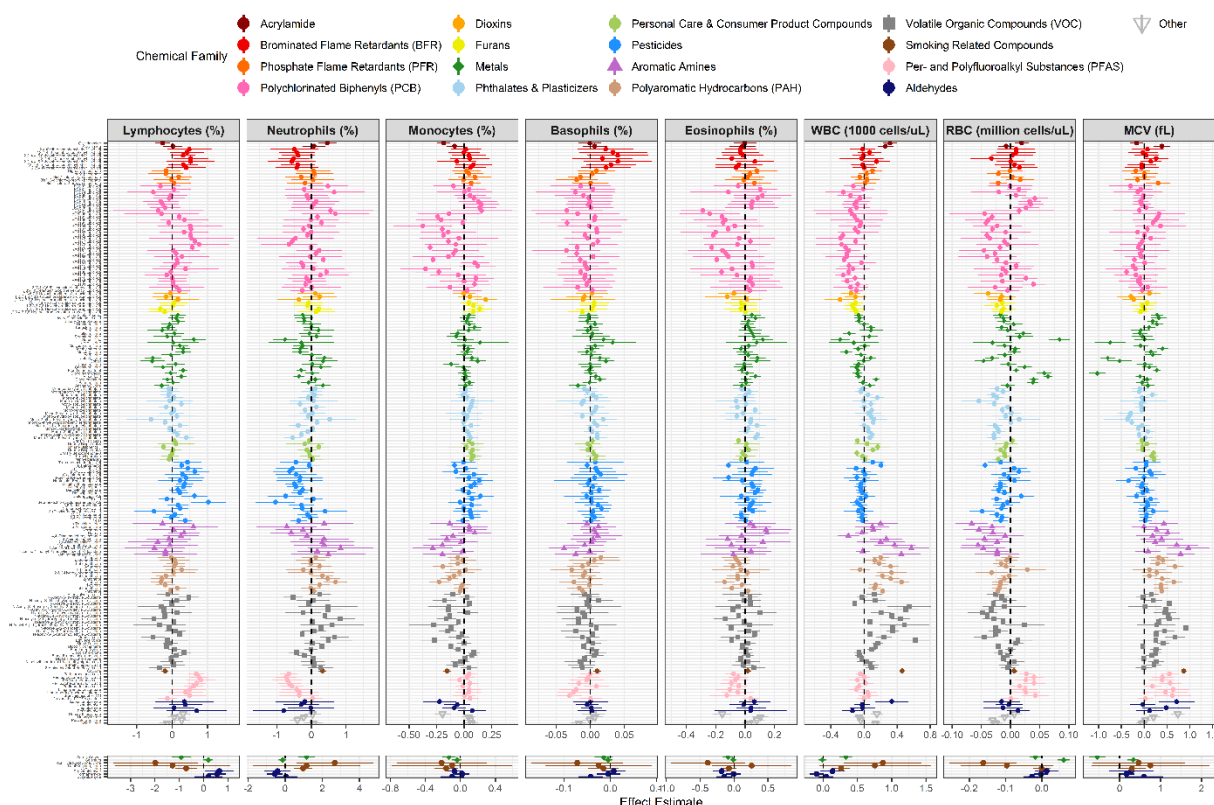
**Figure 1.** Flowchart of participant and chemical exclusion. From the 1999-2018 NHANES cycles, there were an initial 101,316 participants and 486 chemicals. The eight immune measures were percentages of basophils, eosinophils, lymphocytes, monocytes, and neutrophils and mean corpuscular volume, red blood cell (RBC) count, and white blood cell (WBC) count. The eight covariates were age, sex, race/ethnicity, poverty-income ratio, waist circumference, creatinine, smoking, and survey cycle. Participants were first excluded if they were missing covariates or immune biomarker measurements. One participant was excluded due to a WBC count above the maximum LOD. Chemicals and chemical measurements were excluded after participants. A total of 45,528 participants, 198 chemicals with 17 chemical families, eight immune measures, and eight covariates were included in this analysis.



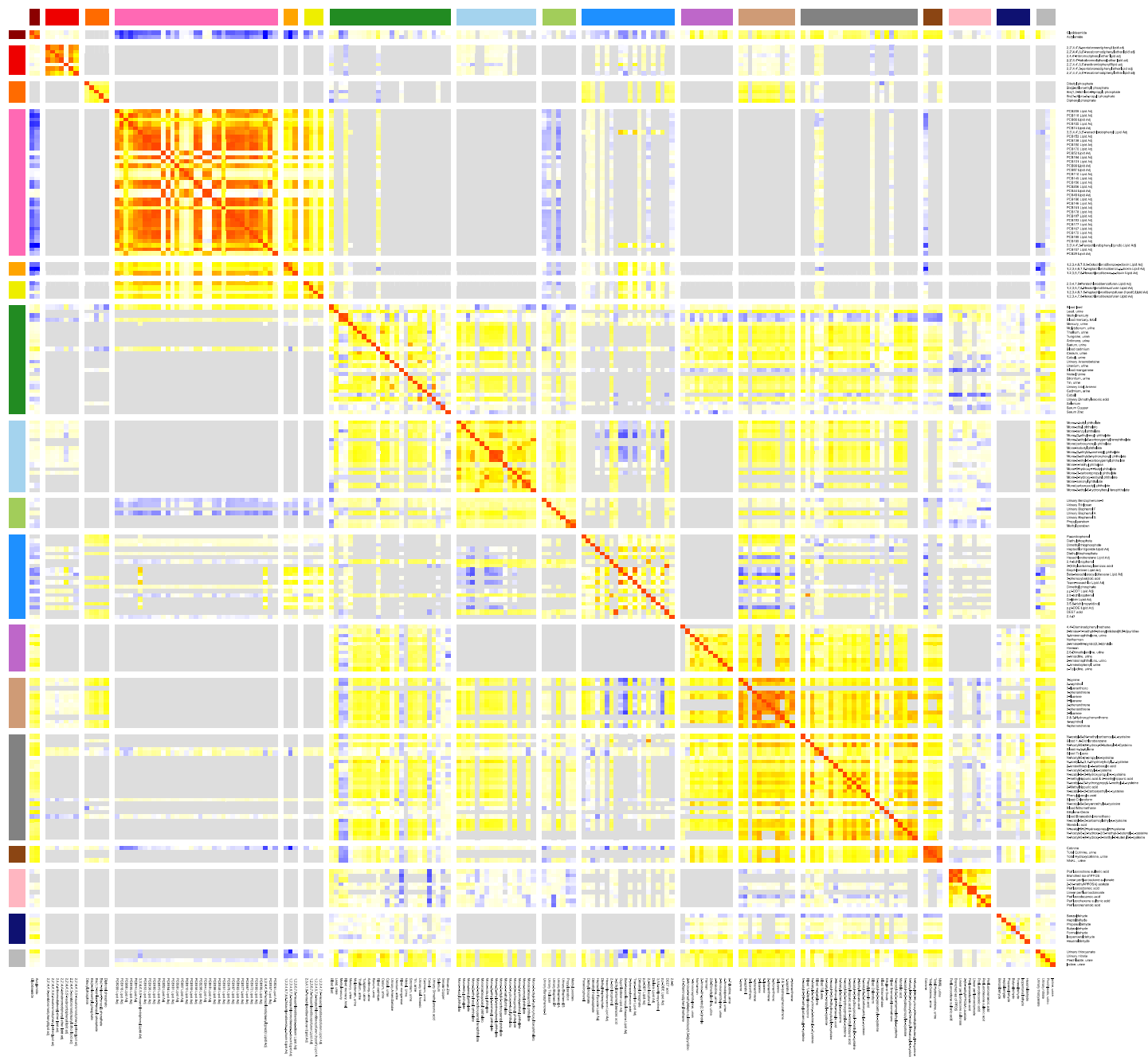
**Figure 2.** Spearman correlations between chemical concentrations. Each row and column is a chemical, grouped by chemical family as shown by the color bars. On the color scale, red indicates a more positive correlation of the chemical concentrations while blue indicates an inverse correlation. White is no correlation and grey indicates that the chemical had no participants in common and therefore no correlation could be calculated.



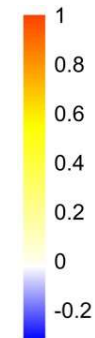
**Figure 3.** Heatmaps of significantly associated chemicals by chemical family and immune measure. The columns are the immune measures. The rows are the chemical families with the total number of chemicals per family in parenthesis in the row label. The top row is the total number of significant chemicals per immune measure. The color bars show the percent of significant chemicals out of the total chemicals in that family where dark blue or red indicates a larger percentage of significant chemicals, and white indicates no significant chemicals. The numbers in the boxes are the number of significant chemicals per immune measure and chemical family. **A)** The blue heatmap shows counts of chemicals associated with lower levels of immune measures. **B)** The red heatmap shows counts of chemicals associated with higher levels of immune measures.



**Figure 4.** Forest plots of chemical beta coefficients from generalized linear models. Each column is a different immune measure, and each row is a chemical. The points are the beta coefficients and 95% confidence intervals. The chemicals are colored by chemical family. The separated panels at the bottom of the figure are for chemicals with effect estimates much larger than the rest of the chemicals in their column.



Spearman Correlation (r)



Chemical Family

- Acrylamide
- Brominated Flame Retardants (BFR)
- Phosphate Flame Retardants (PFR)
- Polychlorinated Biphenyls (PCB)
- Dioxins
- Furans
- Metals
- Phthalates & Plasticizers
- Personal Care & Consumer Product Compounds
- Pesticides
- Aromatic Amines
- Polyaromatic Hydrocarbons (PAH)
- Volatile Organic Compounds (VOC)
- Smoking Related Compounds
- Per- and Polyfluoroalkyl Substances (PFAS)
- Aldehydes
- Other



