

1 Title

2 “Younger women had more access to COVID-19 information”: An Intersectional Analysis of
3 Factors Influencing Women and Girls' Access to COVID-19 Information in Rohingya and
4 Host Communities in Bangladesh.

5 Authors

6 Ateeb Ahmad Parray¹, Muhammad Riaz Hossain¹, Rafia Sultana¹, Bachera Aktar¹, and
7 Sabina Faiz Rashid¹

8 Affiliation

9 1. The Center of Excellence for Gender, Sexual and Reproductive Health and Rights,
10 BRAC James P Grant School of Public Health, BRAC University

11 Correspondence

12 Ateeb Ahmad Parray, Assistant Research Coordinator, The Center of Excellence for
13 Gender, Sexual and Reproductive Health and Rights (CGSRHR), BRAC James P Grant
14 School of Public Health, BRAC University, 6th Floor, Medona Tower, 28 Mohakhali
15 Commercial Area, Bir Uttam A K Khandakar Road, Mohakhali, Dhaka-1213, Bangladesh.
16 Phone # +8801302843604. (ateeb.ahmad@bracu.ac.bd).

17

18 **Keywords** – Intersectionality, COVID-19, Rohingya Refugees, Humanitarian Crisis, Access
19 to Information, Qualitative Research

20

21

22 **Abstract**

23 **Introduction**

24 The Rohingya and Bangladeshi host communities live at a heightened risk of COVID-19
 25 impact due to their pre-existing vulnerabilities, religious beliefs, and strict socio-cultural
 26 and gender norms that render primarily women and girls vulnerable. However, the extent
 27 of this vulnerability varies within and across population groups in the host and Rohingya
 28 communities. The intersectionality lens helps identify, recognize, and understand these
 29 factors that create inequities within populations. This study explored the factors that
 30 influenced the women and girls' access to information during the COVID-19 pandemic
 31 through an intersectional lens.

32 **Methodology**

33 This paper presents partial findings from the exploratory qualitative part of mixed-method
 34 research conducted in ten Rohingya camps and four wards of the adjacent host
 35 communities in Cox's Bazar, Bangladesh. Data were extracted from 24 in-depth interviews
 36 (12 in each community) conducted from November 2020 to March 2021 with diverse
 37 participants, including adolescent girls, younger women, adult women, pregnant and
 38 lactating mothers, persons with disabilities, older adults, and single female-household
 39 heads. All participants provided verbal informed consent before the interviews. In the case
 40 of the adolescents, assent was taken from the participants, and verbal informed consent
 41 was taken from their parents/guardians. The ethical clearance of this study was sought
 42 from the institutional review board of BRAC James P Grant School of Public Health, BRAC
 43 University.

45

46 **Result**

47 We find that the women and girls living in Rohingya communities exhibit a more profound
 48 structural interplay of factors within their socio-ecological ecosystem depending on their
 49 age, power, and position in the society, physical (dis)abilities, and pre-existing
 50 vulnerabilities stemming from their exodus, making them more vulnerable to COVID-19
 51 impact by hindering their access to information. Unlike Rohingya, the host women and
 52 girls explain the impact of the COVID-19 pandemic on their access to information through
 53 the lens of intergenerational poverty and continuous strain on existing resources, thereby
 54 highlighting shrinking opportunities due to the influx, COVID-19 infodemic and
 55 misinformation, access to digital devices amongst the adolescents, and restricted mobility
 56 mainly due to transport, school closures, and distance-related issues. Moreover, the socio-
 57 cultural beliefs and the gender norms imposed on women and adolescent girls played an
 58 essential role in accessing information regarding the COVID-19 pandemic and
 59 consequently influenced their perception of and response to the disease and its safety
 60 protocols. Socio-cultural gender norms led to mobility restrictions, which compounded by
 61 lockdowns influenced their access to information resulting in dependency on secondary
 62 sources, usually from male members of their families, which can easily mislead/provide
 63 mis/partial information. The younger age groups had more access to primary sources of
 64 information and a broader support network. In comparison, the older age groups were
 65 more dependent on secondary sources, and their social networks were limited to their
 66 family members due to their movement difficulty because of age/aging-related physical
 67 conditions.

68 Conclusion

69 This study explored and analyzed the intersectional factors that influenced the women and
70 girls' access to information during the COVID-19 pandemic from two contexts with varying
71 degrees of pre-existing vulnerability and its extent. These include gender, age, state of
72 vulnerability, power and privilege, socio-economic status, and physical (dis)ability. It is
73 imperative that services geared towards the most vulnerable are contextualized and
74 consider the intersectional factors that determine the communities' access to information.

75 Introduction

76 Intersectionality stems from the work of African American feminist scholars (1–3). It
 77 adopts multiple categories of analysis, such as race, gender, sex, ethnicity, socio-
 78 economic status, class, marital status, etc., to analyze the various tenets of social
 79 identities and the interactions between them (4). It considers what occurs when multiple
 80 axes of inequalities enter each other in a particular context and ascertain that focusing on
 81 only one axis of inequality at a time hinders the natural pandemic effect and its unequal
 82 distribution across social groups within the society (5,6). Therefore, the application of
 83 intersectionality offers to learn the interplay between different factors and helps in the
 84 identification of deep-rooted vulnerabilities and advantages to uncover the complex social
 85 influencing factors and power structures that create, sustain, and often intensify them (7).

86 The intersectionality lens is increasingly being adopted in global health research to
 87 understand how multiple dimensions of one's identity can intersect and add to social
 88 inequalities and health disparities within and across subgroups of most-vulnerable
 89 populations (8). For instance, the social and health inequities that limit access to
 90 information for such groups are compounded by intersectional factors such as gender,
 91 age, socio-economic status, pre-existing vulnerabilities, power, privilege, physical
 92 disability, and religion (5–8). In any humanitarian crisis (e.g., the Rohingya Refugee crisis),
 93 communities live in an already vulnerable state compounded by the COVID-19 pandemic
 94 (13). Communities who have fled violence, genocide, persecution, natural disasters, etc.,
 95 and are living in confined camps are likely to have less access to information than those in
 96 the host communities (local populations). Conversely, communities in the camps may
 97 have greater access to resources as more humanitarian workers may concentrate their

98 services in the centers. In such a situation, many intersectional factors influence how
99 people access information about/regarding the pandemic. The intersectionality lens helps
100 identify, recognize, and understand these factors that create such inequities.

101 Since August 2017, more than one million Rohingya have been residing in Cox's Bazar,
102 Bangladesh (14). These refugees live in the world's most densely populated 34 refugee
103 camps in Ukhiya and Teknaf sub-districts in the Cox's Bazar (13), one of the poverty-
104 stricken southern districts of Bangladesh. The Rohingya have limited freedom of
105 movement outside the camps, reduced access to necessities, and live in vulnerable
106 conditions heightened by their history of fleeing a genocide (15), making them especially
107 vulnerable to COVID-19 impact. There is compelling evidence that the COVID-19
108 pandemic is inflicting varying degrees of negative implications on the refugee camps and
109 local communities, including effects on social security, safety, social cohesion, shrinking
110 livelihood opportunities, and erosion of dignity and well-being (16–20), particularly for
111 Most Vulnerable groups (MVGs) - Single women who are household heads, pregnant and
112 lactating mothers, adolescents, youth, elderly, and persons with disabilities (21). We
113 define "*Vulnerabilities*" as the characteristics of an individual, household, or sub-group
114 within a given population and their situation in Cox's Bazar that influence their capacity to
115 meet basic needs, as well as their exposure to physical or mental harm (2).

116 Due to their restricted mobility in the camps, the MVGs exhibit minimal education
117 and skill development (10). They are more exposed to physical and mental harm due to
118 their gender roles and caregiving responsibilities, which also render them dependent on
119 other individuals and have been compounded by the COVID-19 pandemic, making them
120 highly vulnerable to abuse, intimidation, sexual and gender-based violence (10). The

Rohingya are a conservative community with rigid social and cultural norms that frown upon and create undue tensions around women and girl empowerment. In general, Rohingya Women and girls experience barriers to mobility and access to and control over resources (23).

Hindsight hints that the increased domestic violence in the home and harassment outside it for Rohingya women and girls may be attributed to the increased paid work for women (23). A Rapid Gender Analysis (RGA) conducted with Rohingya reported that every woman and girl was either a survivor of sexual assault or a witness to it from their time in Myanmar, but the same woman or girl felt relatively safe in camps in Bangladesh (24). However, as stateless people dependent on relief and humanitarian aid, all Rohingya in camps in Bangladesh are vulnerable. Various reports have shown that COVID-19 pandemic-induced lockdowns, cramped conditions, lack of appropriate sanitation facilities, and disrupted services put women and girls at risk of gender-based violence (GBV), including sexual harassment and assault, and sexual violence (10).

Women's mobility is also hindered by the observance of purdah - a religious doctrine imposed on women and girls that requires them not to be seen by any male person except their family members (*Mahrams*), which limits their ability to access aid, livelihood opportunities, humanitarian services including GBV services (24). Adolescent girls are generally more vulnerable to GBV threats and have very restricted mobility outside the home, so their access to services and information is even more limited (19). However, many of them have access to digital media (mobile phones, social media, messaging applications, etc.) and tend to be comparatively more updated than the others (25). Compounded by the onset of COVID-19 and strict lockdowns restricting all essential

and non-essential movements in the camps, women, and girls had to suffer the greater
brunt of the COVID-19 crisis (25).

The Rohingya are also surrounded by around half-million Bangladeshi host communities -
one of the poorest populations in Bangladesh with a poverty rate of 33% [7]. In August
2017, the host communities gathered resources of many forms and quantities to alleviate
the refugees' sufferings, even before the Bangladesh government committed to the
humanitarian effort formally (26). However, within a year of the previous refugee arrival in
2017, visible solidarity and support for the migrants waned. As COVID-19 approached, the
hostility against refugees and humanitarian assistance organizations was palpable,
especially among the impoverished local people in Cox's Bazar region (27,28). The early
negative implications of refugee settlement were the most severe for the hosts due to the
scarcity of resources and possibilities. Additionally, the degradation of public services such
as birth and death registration fueled dissatisfaction against the government's overall
approach to the refugee crisis (26). Inflation in the pricing of critical goods, declining
salaries for low-skilled employees, competition for scarce natural resources, and loss of
livelihood exacerbated the tension between refugees and Bangladeshi host communities.
(29). In general, the host community believes that the government of Bangladesh's
unilateral humanitarian assistance to refugees demonstrates a failure of the government
to recognize the harmful effect of poverty on the indigenous population in a number of its
policies and initiatives (20).

Caused by overpopulation and a lack of privacy, women in host communities have
claimed increasing restrictions on their freedom of movement and voiced fear of the
Rohingya (29). In the host community, the risk of GBV is significant and is expected to rise

during times of economic hardship (26). As is the case with the Rohingya, child marriage is prevalent in the host society and is employed as a coping mechanism by the poorest and most vulnerable families during times of crisis (24). Domestic violence, mainly IPV is also common in both communities (30); women are the primary victims, while their husbands are the abusers, with an increased risk of domestic violence in the Rohingya community since their relocation (24). This is considered an internal family matter requiring no external intervention. Female-headed families, particularly those with no male representation, are significantly more susceptible (30). According to one study conducted by ACAPS with the host community, 45 percent of female-headed families in the host community were vulnerable or very vulnerable in December 2017, compared to 35 percent of male-headed households (30). Another research, based on a December 2017 evaluation, suggests that food insecurity is almost as severe for women in the host community as it is for Rohingya women, with just one in three women having access to a diverse diet (31). Female-headed households, in particular, have been identified to be among the most vulnerable (13,32). However, this list omits single women who traveled alone during the exodus and their difficulties in providing for basic requirements - traveling outside the house to gather daily essentials, firewood, or water, seeking healthcare for themselves and their children, and generating an income. Due to a shortage of income-generating options for women, they and their families are financially insecure in host communities (22,30).

The COVID-19 pandemic has also exacerbated the current fragility of living conditions, healthcare, disaster management (floods, fires, etc.), other services and facilities, and increasing competition over scarce resources between the refugee and host communities (33). Due to the COVID-19 pandemic, the women and girls, including the

persons with disabilities and the elderly in these communities faced added barriers to accessing necessities such as healthcare consultations or freedom of movement outside the house due to their society's deep-rooted existing gendered, social, cultural, and religious norms [8]. Evidence suggests that adult women and children among Rohingya, are most vulnerable to the COVID-19 due to their misconceptions and lack of awareness regarding the same (16). In contrast, older adults are more susceptible to COVID-19 due to age-related complications (34,35). These factors play an important role in how different groups, especially the most vulnerable within the two communities received information about and responded to the COVID-19 pandemic.

Despite the issue's urgency and effect on the host community, there has been a shortage of pertinent research addressing the complicated nexus between the refugee crisis and host communities in Bangladesh, as well as the impact of COVID-19 on both populations in terms of access to COVID-19 information (36). Recent work has concentrated on poverty, livelihoods, security issues, illicit trafficking, and environmental degradation but has largely overlooked their access to COVID-19 information and services (30,31,33). By bringing host communities and the existing COVID-19 crisis and its implications into the center of the analysis, the paper underlines the need for a more nuanced rather intersectional approach involving the MVGs in both communities and putting them at the locus of the humanitarian response. We analyze the interplay of intersectional factors that influenced the access to COVID-19 information of women and girls in the Rohingya camps and host communities in Cox's Bazar.

Materials and Methods

This study was part of a larger participatory action research project [9] that explored the most-vulnerable groups (MVGs) and their perceptions, needs and impact during the COVID-19 pandemic. An exhaustive literature review was undertaken to list the MVGs from the Rohingya and host communities. These lists were further reinforced during the expert consultation workshops done with humanitarian researchers and practitioners working in the Rohingya Humanitarian Response, Cox's Bazar, in November 2020 to identify the MVGs and the factors that determine their vulnerabilities. The final list of MVGs was developed after validation through field visits and face-to-face interviews with a diverse range of people from both communities. Since this paper focuses on women and girls, we have thus included a sub-set of the data collected regarding MVGs in both the Rohingya and host contexts, including pregnant and lactating mothers, female persons with disabilities (PWDs), adolescent girls, single female household heads (SFHH) and the female older adults (elderly), thereby excluding the male MVGs, i.e., adolescent boys, young male adults, and the male elderly.

This qualitative study was conducted in 10 selected Rohingya refugee camps in the Ukhiya sub-district of Cox's Bazar, Bangladesh, and four adjoining wards of the Rajapalong union in the surrounding host communities. The data collection took place from November 2020 to March 2021. We employed an exploratory qualitative design whereby 24 in-depth case studies, 12 in each Rohingya and the host community, were conducted with purposively selected participants from the list of MVGs identified in the larger research project, serving as inclusion criteria for recruitment to this study.

An in-depth interview (IDI) guideline was developed to conduct the case studies and was pre-tested in both the Rohingya and host communities. Some modifications were

made to the policy after the pilot. Because of the language barrier, the researchers paired with locally recruited trained data enumerators fluent in both the local Bangla (the host community's language) and Rohingya dialects (Ruáingga) and acted as translators while conducting qualitative interviews. The data was collected in both Bangla and Ruáingga. Each interview lasted for an average of 85 minutes. After data collection, the recorded data were transcribed verbatim in Bangla within 24 hours by the local enumerators and then translated into English by a group of professional translators. After that, the researchers cross-checked the data and familiarized themselves with it. Subsequently, inductive coding was done to identify key themes and sub-themes. Thematic analysis was conducted using the qualitative software - Atlas Ti, version 9.0.

Ethics Statement

The Institutional Review Board of BRAC James P Grant School of Public Health, BRAC University provided the ethical clearance for the study under reference number IRB-6 November 20-057. The clearance for the broader research project was sought and obtained from the Refugee, Relief, and Repatriation Commissioner (RRRC), the Camp-in-Charges (CiC) of all the selected camps, the Union Parishad Office, and local community leaders from both communities. Verbal informed consents were obtained from all participants. Informed verbal Assent was also taken from the adolescent participants after consent was taken either from their guardian(s) or parent(s). Participant names were replaced with pseudonyms, and only limited personal information important for analysis was collected, such as age, gender, occupation, and education. datation, including Bangla and English transcripts, was stored in a secured locker at the home institute of the researcher, where only the selected research team members had access. Furthermore,

because this research was conducted during a pandemic, the research team followed recommended COVID-19 safety precautions during fieldwork to prevent coronavirus transmission to community members, research participants, and researchers. All the IDI and KII participants were given hygiene packets (face masks, soap, toothpaste, toothbrush shampoo) as a token of appreciation for their participation in the study.

Results

Respondents Profile

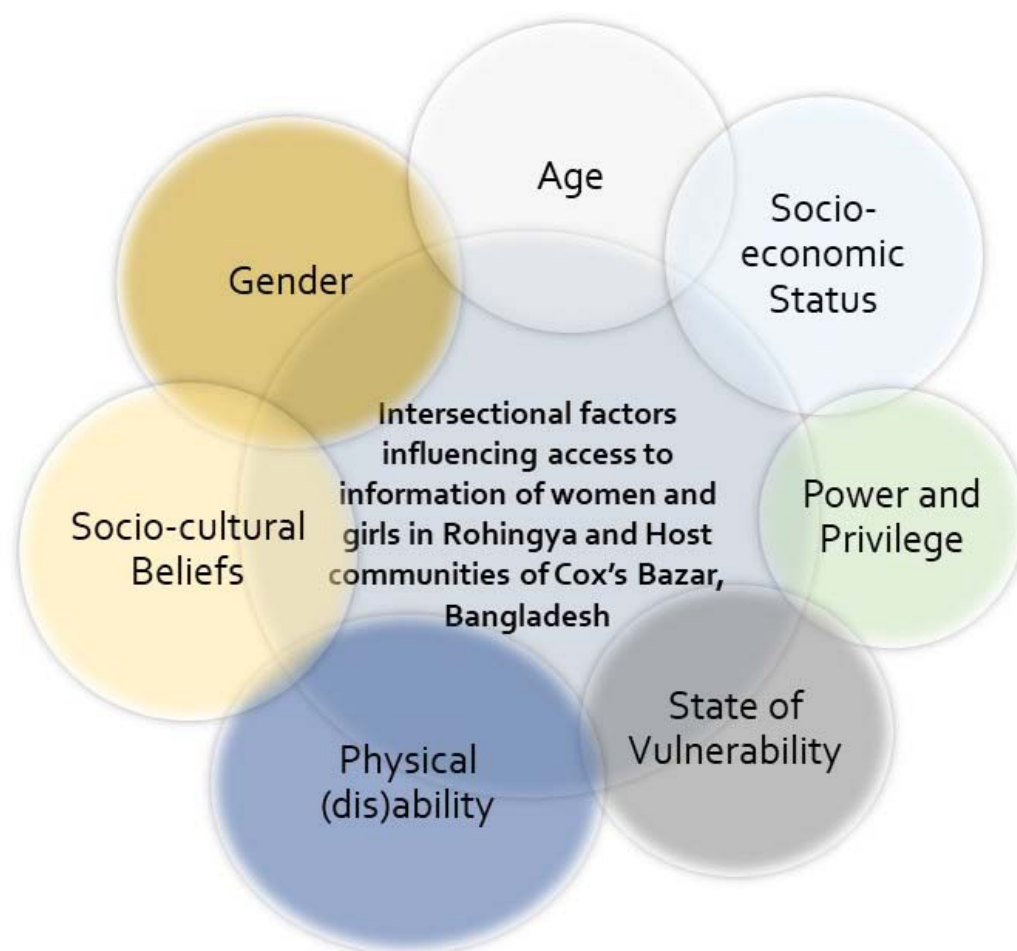
Among the 24 participants, 12 were from the Rohingya community, and 12 were from the host community: participants included adolescent girls, married and unmarried women, pregnant women, single female household heads, persons with disabilities (PWD), and older adults. In the host community sample, all adult women were involved in income generation activities, such as community volunteers, small business owners, and private jobholders. However, in the Rohingya sample, except for one participant, all were homemakers. One-third of the host participants identified themselves as Hindus while all the Rohingya participants identified themselves as Muslims. Table 1 presents the profile of the respondents included in this study.

Table 1: Profile of the respondents included in this study

Characteristic	Group	
Type of Participants	Rohingya participants	Host community participants
Single female household heads	3	3
Persons with disabilities	2	2
Adolescents	2	2
Pregnant and Lactating Women	3	3
Elderly	2	2
Total (N)	12	12
Age (In Years)		
11-17	2	2
18-64 year	8	8
Above 65 year	2	2
Occupation		
Homemakers	10	8
Community volunteers	1	1
Small business	-	1
Student	-	1
Private job	1	1
Religion		
Muslim	12	8
Hindu	-	4

278 Intersectional factors influencing women and girls' access to COVID-19 information

279 Our analysis found that the intersectional factors that influenced the women and girls'
280 access to information during the COVID-19 pandemic include gender, age, socio-
281 economic status, state of vulnerability, power, and privilege, and physical (dis)ability
282 (Figure 1).



283

284 **Figure 1: Intersectional factors influencing women and girls' access to information during**
285 **COVID-19 pandemic in Rohingya and Host communities of Cox's Bazar**

286 Socio-cultural beliefs and gender norms limit access to accurate information

287 Our data showed that socio-cultural beliefs and gender norms imposed on women and
288 adolescent girls played an important role in how they accessed information regarding the

289 COVID-19 pandemic and consequently influenced their perception of and response to the
290 disease.

291 Rooted in orthodox religious values, the socio-cultural beliefs in both the Rohingya and
292 host communities restrict their mobility to public spaces and thus, limit their access to
293 information beyond their immediate homes. As a result, they usually receive information
294 from secondary sources such as the male family members resulting in misinformation
295 being spread within households, especially among women. Often important pieces of
296 information are changed or left out in the process of being relayed. Although many
297 participants referred to community health workers (CHWs) visiting door-to-door and
298 disseminating COVID-19 awareness information, however, in many instances, participants
299 were unable to talk to CHWs because of their household chores or did not have permission
300 from their husbands or male household heads (for example, fathers/fathers-in-
301 law/brother) for interacting with any outsider (including male CHWs) and therefore lacked
302 primary sources of information.

303 For instance, an adult Rohingya female participant informed that she first heard about
304 COVID-19 (that it was a disease and had originated in China) in April 2020 from her
305 husband, who had heard about it from other men of their community at the mosque after
306 prayers. Since she did not venture out of the home, her only source of information was her
307 husband. The secondary sources of information often lead to the relay of partial
308 information or incorrect information within the family members. For instance, an elderly
309 Rohingya woman shared that since she was sick and lived with her son, she rarely
310 ventured outside her house. Her son had told her that COVID-19 was a “flu”. As such, she

could not understand how it could be a deadly disease, *"My son says it is a flu...If it's just like the flu then it will go away also... Why be so afraid?"*, she mentioned.

Rohingya adolescent girl participants informed that culturally, unmarried Rohingya adolescent girls are not permitted to go outside their houses and their male family members bring them their daily necessities. Therefore, they most often do not have exposure to the outside world including any sources of information other than their family members. As one Rohingya adolescent girl said that she did not know about COVID-19 because she did not go outside her house, and no one shared anything about this. She mentioned that she practiced *"purdah"* – a religious doctrine that required her to be seen by no male persons except for her family members. Such strict practices invigorated altruistic notions about COVID-19 among a few participants. For instance, one young adult woman with a disability mentioned that she cared less about COVID-19 as it had come from *Allah* and she practiced *purdah* which means that even if she died due to COVID-19, she would go to the *Jannat* (heaven). When asked where she heard about COVID-19 from and if she had spoken to any CHW before, she mentioned,

"My husband told me about COVID-19...He is a god-loving person...He said that Kiyamat (doomsday) is near and I should practice purdah even more strictly".

This quote highlights the extent of trust and dependency Rohingyas women exhibit in their male counterparts who due to rigid socio-cultural beliefs, often act as barriers to their access to COVID-19 information or/and relay incorrect or partial information. This, compounded by the participant's physical disability and the COVID-19 lockdown put these women and girls in hostile and supportless situations in the camps.

The situation was similar in the host community, albeit the socio-cultural norms there were somewhat lenient than in the Rohingya community. As such, some women were able to access information on their own and relay it to their peers, neighbors, and family members. For instance, one young lactating mother in the host community said that she had first heard about COVID-19 from a local NGO volunteer. Even though, because of her small child, she was confined to her home, the NGO volunteer would come to her once a week and talk to her about the pandemic. As she said,

"I can't go outside because my baby is small, and my in-laws don't let me go out... but my friend (NGO worker) can work. So, when she gets any new information, she comes and tells me." (Lactating Mother, Host)

In the host community, adolescent girls had greater access to primary sources of information as they were able to talk to their peers and access social media through their mobile devices or the mobile devices of their family members. However, some adolescent girls mentioned that due to the closure of educational institutions they were unable to talk to their peers as they were barred from going outside their homes. The elderly women in the host community had similar experiences to those in the Rohingya community and were mostly unaware of the severity of COVID-19.

Access to community health workers, and the digital divide between Rohingya and Host communities

According to our analysis, in both communities, age and health status, access to CHWS and the digital divide or the access to digital media among the Rohingya and host communities played a role in women and girls' access to accurate COVID-19 information,

how they internalized it and whether they were willing to abide by safety measures against the virus.

In the Rohingya community, adolescent girls and young adults faced restrictions on mobility outside of their homes due to the rigid socio-cultural beliefs and gender norms and had little-to-no access to mobile phones, television, radio, and social media. Their main sources of COVID-19 information amid the pandemic were mostly their male family members and to some extent, the local female community youth volunteers.

Most of the younger adult Rohingya women, many of whom were pregnant and lactating, were burdened with added caregiving responsibilities during the lockdown and had no scope to talk to the CHWs. Thus, they were totally dependent on their husbands for any COVID-19 related information and were inclined towards misconceptions, rumors, and fatalistic notions about COVID-19.

Comparatively, Rohingya adolescent girls, despite being as restricted as young adults, identified CHWs as their primary sources of COVID-19 information and pointed out their trust in CHWs, how they helped them stay updated during the lockdowns (March 2020 – July 2020), and their dedication to following the safety protocols. In the words of one adolescent Rohingya girl,

"I first about Corona from Jyoti (Pseudonym) Apa. When she told me that people are dying in China and America, I was so scared...My father will never allow me to go to the pharmacy myself if I have flu or anything. During lockdown having the flu means we would be half-dead due to fear (of contracting COVID-19) ...Whenever Jyoti Apa came, I would listen to her...I would follow her suggestions..." (Adolescent Girl, Rohingya).

This quote highlights the trust these girls have in local community volunteers (NGO personnel, CHWs, etc.) from their area, and notwithstanding their mobility restrictions, they were able to connect with these trusted sources, get updated about the latest COVID-19 information, and follow it, much as their situation allowed.

On the other hand, elderly women, many of whom were PWDs, were reluctant to believe in and abide by the safety measures due to their lack of mobility and access to first-hand COVID-19 information. Although their mobility issues stemmed from their weak physical health, it made them dependent on the male members of their families, similar to the young Rohingya adults.

For instance, one elderly Rohingya woman mentioned that she heard about Corona from her son, who had heard it in a gathering that he attended at a local tea stall. According to her, the virus was a rumor to frighten the elderly and people living with multiple health conditions. In her own words,

"My son told me about this disease (COVID-19) ...He told me that I should not sit near the window or I may get infected...I think he just wants me to be on the bed all the time...otherwise, why would anybody fear Corona. Has anybody ever died from it?" (Elderly Woman, Rohingya).

The situation was entirely different in the host community with most of the adolescent girls, younger women, and some middle-aged adult women having more access to information through the internet, social networking sites, and mobile-based applications like WhatsApp, Facebook, etc. As mentioned by one adolescent girl from the host community,

"I heard about COVID-19 when my friend shared me the link to a newspaper article on Corona on WhatsApp..." (Adolescent Girl, Host).

In contrast to the camps, most of the participants in the host sample had access to TV, radio, and social media. Many of them mentioned learning about the COVID-19 disease and its safety measures through the TV. However, their concerns stemmed from fear of the refugees whom most of them described as "outsiders". As a result, during the lockdowns, women and girls faced added restrictions from their families. As mentioned by one young adult married woman living in one of the villages of host communities,

"Even though there is no rickshaw or tempo [battery-operated three-wheeler] available now-a-days [during the lockdown], my family still does not allow me to go outside because the Barmas [a local term for Rohingya refugees] are everywhere. What if they abduct me?" (Young Woman, Host).

Compared to Rohingya older adults, the elderly participants in the host sample exhibited better knowledge about COVID-19 and its subsequent protocols, claiming better access to COVID-19 information through digital media including TV, Radio, Mobiles available in their households, etc. For instance, one adult PWD woman said that she had first heard about COVID-19 from the news on the TV and she was alarmed by it. She said, "I was so scared that I immediately started cleaning my hands and my child's hands as well. If it's on the news then it must be very serious, right?" (Adult Woman Host). Even though adolescents had more access to digital media, being in the same household indicated transmission of COVID-19 information within the family members. As was in case of Shamima (pseudonym), an old woman living in the host communities. Shamima had attained no formal education but she could demonstrate the WHO-recommended handwashing

method and describe the significance of more-or-less all steps. She mentioned that her granddaughter – an adolescent girl studying in a nearby community-based school, had watched a video on her phone and explained to her the importance of handwashing.

However, this level of household discussion regarding health-related issues (For e.g., COVID-19) was not referred by any of the participants in the Rohingya sample. The Rohingya participants' thoughts were mostly inclined towards fatalistic notions stemming from their religious beliefs, pre-existing vulnerabilities due to facing genocide, and COVID-19 seemed to be lower in the hierarchy of worries.

Interestingly, a few older adult participants in the host sample, despite access to CHWs, TV, and Radio expressed their disbelief towards the severity of COVID-19. Most of them identified religious reasons when asked about the origin of COVID-19 indicating the influence of religious values on health beliefs. Due to this, they chose to stay confined to their rooms and prayed as they believed prayers could save them from COVID-19. In this confinement, despite incidences of ailments like joint pain, headache, dental pain, etc., many older adult participants in the host sample were confined to their rooms and hardly got any chance to talk to CHWs or listen to awareness messages. Additionally, due to the unavailability of transportation and the fear of contracting COVID-19, their caregivers also denied accompanying them to the health facilities where they could have probably obtained correct information about COVID-19 that could have aided in their understanding of the severity of the disease. The religious beliefs, coupled with the fatalistic thoughts stemming from religious beliefs, and dependency on caregivers influenced the access to COVID-19 information for older adult participants in the host community sample.

Describing the COVID-19 pandemic as “*Kiyyamat*” (the day of judgment; a religious belief in the Muslim faith), and fuelled by fatalistic thoughts, one elderly woman from the host community, confined herself to her room so that she could pray. In her own words, “*This is Qayamat [dooms day – a concept in the Muslim faith] ... Corona will only hurt those who are disbelievers and have committed sins... [Besides] I have already approached my time. I cannot eat what I want, I cannot go where I want... Now I cannot go to the hospital also.... [because] my son is afraid [of contracting COVID-19] in Hospital... I do not care about Corona...*” (Elderly Woman, Host).

This quote highlights how religious beliefs, dependency, and fatalistic beliefs influenced the perceptions of these women by hindering access to information.

Socio-economic status and social support networks also determine access to information

The data found that women and girls from comparatively well-off families and/or with better social support networks in both Rohingya and host communities had more access to information.

In the Rohingya community, the socio-economic status can be depicted by the number of male members in the household who were able to work and earn income and provide for their families. In addition, working also entailed venturing outside their homes, talking to their peers, attending informal gatherings at tea stalls and prayers in the mosques. Women and girls from these households had greater access to information regarding the pandemic as the working family members (most men and boys) would learn about the pandemic from outside and share parts of that information with the women and girls at home.

For instance, one middle-aged Rohingya woman said,
"One of my sons has a small shop in the Bazar and he hears many things about the world. I heard about this virus from him first. A group of customers told him and he told all of us."
(Adult Woman, Rohingya).

Another young Rohingya female had also learned about the pandemic from her family member who worked in a local NGO. She mentioned,
"Even before the NGO workers came to us, I heard about Corona from my Sujon (Pseudonym; an NGO worker). I told all my friends as well. I often hear things from him and let my friends know." *(Young Adult, Rohingya).*

The Socio-economic status of Rohingya families was also determined by how much of the savings, jewellery and other notable good they were able to carry with them during the exodus of August 2017. Even though they had to bargain most of these items to navigate their way to the refugee camps, some families still possessed such items. These commodities held a great influence on how people perceived families which possessed them. Such families were perceived well-off by their peers which entailed that the women from the neighborhood and other active female members of the society (such as community leaders' wife, youth volunteer, etc.) would often visit them during the lockdowns and discuss COVID-19 related information thereby aiding access to correct COVID-19 information for women and girls in such households. In the words of Morjina, a middle-aged mother of three children,

"We are lucky that the community leader's wife comes to our home.... She told me that I should be careful about the virus and ask my husband to wash thoroughly [when he returns from outside] ...One Youth volunteer and her friend also come to my home... They

492 *taught them how to tighten the mask if it is loose...I think they come to our house because we*
 493 *are a bit better off than others [in the block] ...Alhamdulillah. We have some hard-earned*
 494 *items [referring to jewellery] ...My husband had to go to the market to sell many times"*
 495 *(Adult Woman, Rohingya).*

496 The reputation of being "better-off" in the block put these women and their families in
 497 privilege and facilitated their access to COVID-19 information.

498 Similar to the participants in the Rohingya sample, participants in the host sample with
 499 economically well-off or educated families had greater access to information regarding
 500 the pandemic. This was due to the fact that often their families had TVs or devices that
 501 had access to social media or they had access to government/NGO structures that
 502 provided information. This was evident from the experience of a young woman whose
 503 family owned a shop in the local market. She had her own mobile phone and was able to
 504 access social media sites which is where she first learned about the pandemic. In her own
 505 words,

506 *"I saw on Facebook that a virus was all over the world. I was very scared because my [family*
 507 *member] lives in another country and I did not want him to suffer alone. I asked him to come*
 508 *back but he didn't. He just asked me to stay away from everyone and wash my hands. I also*
 509 *saw on YouTube that I need to wash my hands. So now, my husband and I always wash our*
 510 *hands as much as possible."* (Young Woman, Host).

511 Another adolescent girl whose family members worked as NGO community volunteers
 512 also said that she had learned about the pandemic prior to any of her friends knowing
 513 what Corona was. This was because her siblings had been briefed at work and they were
 514 able to relay the information to her as well.

As was in the case of another adolescent girl from host communities. Her family members worked as volunteers in local NGOs. When COVID-19 first arrived in Bangladesh, she was one of the first to know about the disease among her peers. In her own words,

"My family members told me about it (COVID-19). At first, I did not want to believe them but then I saw on TV as well that it is a deadly disease. Also, they heard from their offices so it must have been right." (Adolescent Girl, Host).

State of vulnerability

According to our analysis, an individual's state of vulnerability (pre-existing vulnerabilities before the COVID-19 pandemic) also influences their access to information regarding COVID-19.

Restricted mobility, denied citizenship, forced displacements, and enduring persecution for decades indicate the levels and extent of vulnerabilities, Rohingya women and girls live with. COVID-19 impact – loss of livelihood, food insecurity complete loss of income put such families through a strain making the women and children vulnerable to abuse, especially in the contexts where husbands or male family members are the main sources of information and the only way of linking with the outside world for the Rohingya women. Those who were victims of intimate partner violence (IPV) were often deprived of getting information from that only source.

As was in the case of one adult Rohingya woman who faced intimate partner violence (IPV) and believed that she did not possess the means to be worried about a virus. She was not at liberty to worry about COVID-19 because asking questions about it would trigger an episode of IPV in her household. In terms of risks, COVID-19 appeared low in the hierarchy

537 of concerns, and she was overcome with the daily fears of physical beatings and abuse
538 from her husband. According to her,
539 *"How will I worry about this disease when anytime I ask my husband about it, he gets angry?*
540 *I don't want to anger him and create problems for myself. I don't even know what it is, so why*
541 *should I worry?" (Adult Woman, Rohingya).*

542 Conversely, the host community also lived in a vulnerable state but evidently, their
543 vulnerability was of a different kind stemming from poverty as they lived in one of the
544 most impoverished sub-districts of Bangladesh. Although participants in the host
545 community sample, generally expressed having greater mobility than those in the
546 Rohingya community and thus more access to COVID-19 information. However, for some
547 participants, particularly the single female household heads, access to COVID-19
548 information was challenging. The socio-cultural and gender norms restricted their
549 mobility and hindered their access to the COVID-19 information, and for those who had
550 the mobility of some sort, the geographical barriers – hilly terrains, muddy roadways, and
551 lack of transportation due to COVID-19 -induced lockdown in the area made it difficult for
552 them to access the health facilities where they could probably obtain the required COVID-
553 19 information.

554 One middle-aged single woman from the host community said, *"I wish I could earn money.*
555 *But I can't. Since I don't go out, I don't know about this virus. But I've heard from my children*
556 *that some virus is here. We can barely eat...virus is far away from my mind."* (Single Woman,
557 *Host).*

558 This quote highlights the state and extent of the pre-existing vulnerabilities of single
559 women living in host communities which limited their access to COVID-19 information.

Power and Privilege

According to our analysis, power within a community and the associated privileges exist even in the direst contexts including the stateless Rohingya community and the impoverished Bangladeshi host community. Within the women and girls in the Rohingya and host communities, power and privilege exist primarily in two ways; one is direct power which leads to privilege such as a woman being a CHW or an NGO volunteer. The other is indirect power which also leads to privilege such as being the wife or daughter of a community leader or from a well-connected socio-economically better off family. Therefore, a Rohingya NGO volunteer was far more aware and well-networked about the pandemic and had access to support from NGOs and other stakeholders than other Rohingya women her age. She shared,

"I wear masks and always ask others to wear them as well. I know this is how we can be safe from COVID-19. I hope my work has helped others to gain some knowledge about this disease." (NGO Volunteer, Rohingya).

On the other hand, the middle-aged woman, the wife of a community leader also had more access to information and resources regarding the virus as her husband was directly involved with the NGOs that were providing information and other resources. She said,

"My husband came and told our family about Corona when he heard from the NGO people. I was the first one to tell other women in my block. I also told them to wash their hands and not sit so close to one another when we sit and talk. I also told them to stop their children from going out and playing." (Adult Woman, Rohingya).

Similarly, an adolescent girl who belonged to a family that was economically better off, in the host community, had greater access to information. She said that her family had not

suffered financially due to the lockdown and she had been able to continue her studies as she had access to the internet. According to her,

"I study online. I also heard about this (COVID-19) from Facebook first. It came from China, right? I told my mom to wash everything when I heard about it coming to Bangladesh."
(Adolescent Girl, Host)

However, this was not the case for all adolescent girls. Many adolescent girls had to discontinue their studies due to the pandemic and the closure of educational institutions. While many of them were married off and others suffered from the pressure of a looming early marriage. As was in the case of another adolescent girl, who had to drop out of school as the lockdown ensued. Her father was a day laborer who lost his income as soon as the government imposed a lockdown and their family's situation was not such that she could join online classes. The participant mentioned having to stay at home and do household chores and take care of her younger siblings thereby losing her social connections and networks from which she could get information because of her inability to attend online classes. In her own words,

"I don't know if I will be able to study again. I wanted to be a nurse. To help people.... now I just hope I don't have to get married soon. My parents have already talked about it a bit. They are looking for a boy...but I don't want to get married." (Adolescent Girl, Host).

Physical (dis)ability

According to our analysis, in the Rohingya and host communities of Cox's Bazar, physical ability or disability also dictates the access to information of the women and girls regarding COVID-19. The women and girls with disabilities in these communities are not only dependent on others for their mobility but also for their information regarding the

pandemic. In the Rohingya community, this is further prevalent as the terrain is hilly (and vulnerable to landslides), and a PWD would have a difficult time navigating it by themselves thus hindering their mobility. Coupled with the strict socio-cultural and gender norms, women and girls with disabilities have even less access to information. An adolescent Rohingya girl with a disability said,

"I was unable to attend the meetings held by NGOs because of my sickness (disability) but I heard from others that people with Corona symptoms should visit hospitals. But many people don't." (PWD, Rohingya).

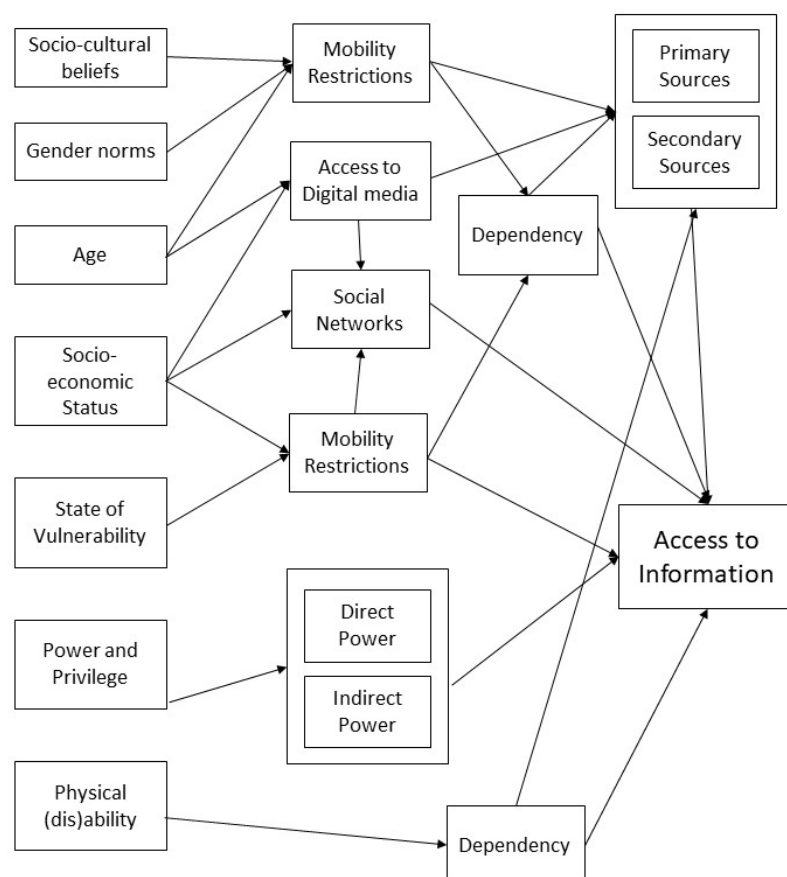
She further added that she did not know much about the virus because she could not venture outside and the little, she knew was all from her father and brother.

In the host community, many PWD participants pointed out that they were dependent on their caregivers for mobility and information. As COVID-19 lockdown was enforced in March 2020, their caregivers could not go out and were disconnected from their peers, friends, relatives, etc. As a result, the caregivers had little-to-no information about COVID-19 and so did the PWD participants. As was in the case of one adult PWD woman in the host community. She did not express much anxiety about COVID-19. She was dependent on her caregiver for all the information relating to the pandemic and she said, *"I don't really know much. But that's okay. Because she (caregiver) knows, and if something bad happens she is supposed to tell me. How else can I know if she does not tell me?" (PWD, Host).*

Discussion

The findings of this study elucidate that the many intersectional factors have played an integral role in determining the access to COVID-19 information of women and girls in the

629 Rohingya and host communities of Cox's Bazar regarding the COVID-19 pandemic. **Figure**
 630 **2** presents a visual framework that depicts the interplay of intersectional factors that
 631 influenced the access to information of women and girls in the studied contexts.



632

633 *Figure 2: Visual Framework that depicts the intersectional interplay of factors that influenced*
 634 *the access to information of women and girls during the COVID-19 pandemic*

635 First, gender played an important role in how the women and girls across age groups in
 636 both communities gathered and accessed information because the rigid socio-cultural
 637 norms stemming from deep-rooted orthodox religious beliefs perpetuated certain gender
 638 norms in the communities leading to mobility restrictions and resulting in dependency on
 639 secondary sources that can be misleading and confusing as it is often the partial
 640 information.

Women and girls, in many other humanitarian contexts (37–39), have limited access to the world outside their homes and thus have less access to information regarding the COVID-19 pandemic and how to maintain safety measures [4]. The younger age group in both communities had more access to primary sources of information and wider social support networks, while the older age groups were more dependent on secondary sources and their social networks were limited to their family members due to their difficulties in movement stemming from age-related complications. This meant that for these women and girls, information was often delayed or not relayed properly leading to misinformation and gaps in information. Additionally, because women and girls had to depend on their male counterparts for information this may have increased their dependency on men which could lead to increased cases of IPV and other forms of gender-based violence (GBV). Many situation analyses conducted during the COVID-19 by the humanitarian service providers in other humanitarian contexts also highlight similar findings (40–43) i.e., an increase in IPV and domestic violence cases among women and girls during COVID-19 lockdown (26). This is consistent with the global data and highlights the heightened risk these women and girls face and that COVID-19 has exacerbated these vulnerabilities (3,5,7,15,28,44).

The socio-economic status of women and girls in these communities also affected their access to information. Our evidence suggests that in the Rohingya community, a better socio-economic status meant that the household had more earning members, mostly men. This also means that women and girls were more dependent on them for information regarding the pandemic. Conversely, socioeconomic status also indicated a privilege, and such families had better access to COVID-19 information as more socially active members like youth volunteers, community health workers, etc, visited them time

and again. We thus highlight that women and girls who work as community health workers or volunteers have more access to information and are able to create awareness amongst their social circles. As such, their power and privilege aid those who are near to them. However, due to the rigid gender norms prevalent in society, this power and privilege can have added risks for women and girls. The community people may believe that they are changing gender norms through their work which may create issues for them. Additionally, if these working women happen to be younger, that may add another layer of risk as their families may want them to stop working and get married early [10]. Evidence suggests that child marriage is used as a coping mechanism for the poorest host community households and is known to increase aftershocks such as natural disasters. For instance, after the influx of Rohingya refugees, a survey reported that 23% of host communities reported an increase in child marriage practices within three months, indicating an increase in the use of this practice as a negative coping mechanism (30). It is to be noted that the increased strain on resources due to the COVID-19 pandemic may boost the use of negative coping mechanisms as is evident from increasing GBV, IPV, and child marriage cases in both communities (13).

The state of vulnerability or pre-existing vulnerabilities of women and girls in both communities directly impacted their access to information. In the Rohingya community, women and girls faced greater vulnerabilities in the camps with increased rates of IPV and GBV (10). The IOM's Needs and Population Monitoring (NPM) report estimates that 12 percent of households in the Rohingya community are likely to be female-headed and that 17.35 percent of the Rohingya mothers are single mothers (13). In both communities, single female household heads were in a uniquely vulnerable position where they were confined to their households due to rigid socio-cultural and religious norms. This directly

impacted their access to information as they remained confined in their homes and also compounded the mental distress they faced amid a global pandemic. The extent of strain COVID-19 has put the single female-headed household through, it is likely that children from such households may engage in child labor through informal economic activities or drug trafficking, both of which are highly prevalent in Ukhiya, Cox's Bazar (13). As of January 2018, over 85 percent of children in host communities were predicted to be engaged in paid and unpaid labor, one of the highest percentages relative to other groups studied (Rohingya in camps, Rohingya in settlements and Rohingya in host communities) (33).

PWDs were particularly affected due to lack of information as they often did not have the ability to collect the information by themselves. Additionally, their dependency on caregivers also limited their access to information and COVID-19 services altogether. This is in line with one report on the Asia Pacific region where women with disabilities detailed their lack of understanding regarding the pandemic due to a lack of access to information about it (45). There is compelling evidence that PWDs and older persons face significant barriers to accessing vital services such as latrines, water stations, health centers, and assistance distribution due to mountainous and flood-prone terrain and a lack of adapted facilities and inclusive initiatives (33). Social stigma is a major barrier preventing access to essential services and participation in community activities and decision-making processes (30). Specialized support is restricted for persons seeking mental health and psychiatric treatment, and there are few certified experts available to meet the scope of these demands in the camps (17).

Conclusion

This paper explored the interplay of factors that affect the access to COVID-19 information of women and girls in the Rohingya and host communities of Cox's Bazar amid the COVID-19 pandemic through an intersectionality lens. The findings revealed that both Rohingya and Bangladeshi women and girls face many barriers to accessing COVID-19 information in these communities because of their gender, socio-cultural beliefs, age, socio-economic status, state of vulnerability, power, and privileges, and the prevalent patriarchal norms which suppress their rights.

In any humanitarian crisis where communities are already facing multifaceted risks, it is imperative that services geared towards them are contextualized and keep in mind the myriad barriers to access for the communities. While planning COVID-19 interventions, intersectionality should be used as an approach to recognize critical aspects of the populations which if ignored may produce pockets of vulnerable populations within the society. This implies first identifying the axes of intersectionality and then considering them while planning responses. Any precautionary measure to COVID-19 that is disseminated in Cox's Bazar must be mindful of the intersectional identities of women and girls and the barriers they face to access services and information because of their intersectional identities.

References

1. Collins PH. *Black Feminist Thought: Knowledge, Consciousness, and the Politics of Empowerment*. 2nd ed. New York: Routledge (2000). doi: 10.4324/9780203900055
2. Crenshaw K. Demarginalizing the intersection of race and sex: A black feminist critique of antidiscrimination doctrine, feminist theory and antiracist politics. *u Chi Legal f*, (1989)139. <https://philpapers.org/archive/CREDTI.pdf?ncid=txtlnkusaolp00000603> [Accessed February 10, 2022]
3. Hankivsky O. Women's health, men's health, and gender and health: Implications of intersectionality. *Social Science & Medicine* (2012) **74**:1712–1720. doi: <https://doi.org/10.1016/j.socscimed.2011.11.029>

- 739 4. Bowleg L. We're Not All in This Together: On COVID-19, Intersectionality, and Structural
740 Inequality. *American Journal of Public Health* (2020) **110**:917. doi:
741 10.2105/AJPH.2020.305766
- 742 5. Birchall J. Gender, intersectionality and Covid-19. *COVID-19 Responses for Equity (CORE)*
743 (2021) <https://c19re.org/gender-intersectionality-and-covid-19/> [Accessed September 26,
744 2021]
- 745 6. Viruell-Fuentes EA, Miranda PY, Abdulrahim S. More than culture: structural racism,
746 intersectionality theory, and immigrant health. *Soc Sci Med* (2012) **75**:2099–2106. doi:
747 10.1016/j.socscimed.2011.12.037
- 748 7. Hankivsky O, Kapilashrami A. Beyond sex and gender analysis: an intersectional view of the
749 COVID-19 pandemic outbreak and response. *Global Policy Institute, Queen Mary University*
750 *of London* (2020) [https://www.qmul.ac.uk/media/global-policy-institute/Policy-brief-COVID-](https://www.qmul.ac.uk/media/global-policy-institute/Policy-brief-COVID-19-and-intersectionality.pdf)
751 [19-and-intersectionality.pdf](https://www.qmul.ac.uk/media/global-policy-institute/Policy-brief-COVID-19-and-intersectionality.pdf) [Accessed September 26, 2021]
- 752 8. Lapalme J, Haines-Saah R, Frohlich KL. More than a buzzword: how intersectionality can
753 advance social inequalities in health research. *Critical Public Health* (2020) **30**:494–500. doi:
754 10.1080/09581596.2019.1584271
- 755 9. Lokot M, Avakyan Y. Intersectionality as a lens to the COVID-19 pandemic: implications for
756 sexual and reproductive health in development and humanitarian contexts. *Sexual and*
757 *Reproductive Health Matters* (2020) **28**:1764748. doi: 10.1080/26410397.2020.1764748
- 758 10. International Rescue Committee. The Shadow Pandemic: Gender-Based Violence among
759 Rohingya refugees in Cox's Bazar. Cox's Bazar (2020). [https://www.rescue-](https://www.rescue-uk.org/sites/default/files/document/2247/theshadowpandemicbangladesh.pdf)
760 [uk.org/sites/default/files/document/2247/theshadowpandemicbangladesh.pdf](https://www.rescue-uk.org/sites/default/files/document/2247/theshadowpandemicbangladesh.pdf) [Accessed
761 September 26, 2021]
- 762 11. Kapilashrami A, Hankivsky O. Intersectionality and why it matters to global health. *Lancet*
763 (2018) **391**:2589–2591. doi: 10.1016/S0140-6736(18)31431-4
- 764 12. Sasser JS, Leebaw B, Ivey C, Brown B, Takeshita C, Nguyen A. Commentary: Intersectional
765 perspectives on COVID-19 exposure. *Journal of Exposure Science & Environmental*
766 *Epidemiology* (2021) **31**:401–403. doi: 10.1038/s41370-021-00336-2
- 767 13. Intersectoral Coordination Group (ISCG) Secretariat. Joint Response Plan for the Rohingya
768 Humanitarian Crisis. Cox's Bazar (2021).
769 https://reliefweb.int/sites/reliefweb.int/files/resources/2021_jrp_with_annexes.pdf
770 [Accessed September 26, 2021]
- 771 14. Fischer L, Zigman J, Chowdhury H, Bazle R, Islam M, Hughes J, George M, Price R, Shidhaye
772 R, James A, et al. An assessment of perceptions of justice in Rohingya refugees to identify
773 mental health and psychosocial services needs and inform programme development in
774 Bangladesh: a qualitative survey. *The Lancet Global Health* (2020) **8**:S23. doi:
775 [https://doi.org/10.1016/S2214-109X\(20\)30164-9](https://doi.org/10.1016/S2214-109X(20)30164-9)
- 776 15. UNHCR, CARE, ActionAid. An Intersectional Analysis of Gender amongst Rohingya Refugees
777 and Host Communities in Cox's Bazar, Bangladesh. Cox's Bazar (2020).
778 [https://www.humanitarianresponse.info/sites/www.humanitarianresponse.info/files/docu-](https://www.humanitarianresponse.info/sites/www.humanitarianresponse.info/files/documents/files/gender_and_intersectionality_analysis_report_2020-19th_october_2020.pdf)
779 [ments/files/gender_and_intersectionality_analysis_report_2020-19th_october_2020.pdf](https://www.humanitarianresponse.info/sites/www.humanitarianresponse.info/files/documents/files/gender_and_intersectionality_analysis_report_2020-19th_october_2020.pdf)
780 [Accessed September 26, 2021]

- 781 16. Shishir NN. Rohingya camps in Bangladesh vulnerable to Covid-19 outbreak. *Earth*
782 *Journalism Network* (2020) [https://earthjournalism.net/stories/rohingya-camps-in-](https://earthjournalism.net/stories/rohingya-camps-in-bangladesh-vulnerable-to-covid-19-outbreak)
783 [bangladesh-vulnerable-to-covid-19-outbreak](https://earthjournalism.net/stories/rohingya-camps-in-bangladesh-vulnerable-to-covid-19-outbreak) [Accessed June 3, 2020]
- 784 17. Islam MM, Yunus MDY. Rohingya refugees at high risk of COVID-19 in Bangladesh. *The*
785 *Lancet Global Health* (2020) **8**:e993–e994.
- 786 18. Truelove S, Abraham O, Altare C, Azman AS, Spiegel PB. COVID-19: Projecting the impact in
787 Rohingya refugee camps and beyond. Baltimore, Maryland (2020).
788 [http://hopkinshumanitarianhealth.org/assets/documents/COVID-](http://hopkinshumanitarianhealth.org/assets/documents/COVID-19__Rohinya_Refugees__Beyond_-_Summary_FINAL_March_25_2020.pdf)
789 [19__Rohinya_Refugees__Beyond_-_Summary_FINAL_March_25_2020.pdf](http://hopkinshumanitarianhealth.org/assets/documents/COVID-19__Rohinya_Refugees__Beyond_-_Summary_FINAL_March_25_2020.pdf) [Accessed
790 December 13, 2021]
- 791 19. Rahman MM, Baird S, Seager J. COVID-19's impact on Rohingya and Bangladeshi
792 adolescents in Cox's Bazar. *UNHCR Blogs* (2020) [https://www.unhcr.org/blogs/covid-19s-](https://www.unhcr.org/blogs/covid-19s-impact-on-rohingya-and-bangladeshi-adolescents-in-coxs-bazar/)
793 [impact-on-rohingya-and-bangladeshi-adolescents-in-coxs-bazar/](https://www.unhcr.org/blogs/covid-19s-impact-on-rohingya-and-bangladeshi-adolescents-in-coxs-bazar/) [Accessed July 1, 2021]
- 794 20. Islam MN, Inan TT, Islam AKMN. COVID-19 and the Rohingya Refugees in Bangladesh: The
795 Challenges and Recommendations. *Asia-Pacific Journal of Public Health* (2020) **32**:283–284.
796 doi: 10.1177/1010539520932707
- 797 21. International Development Research Centre. Bridging Communities in Cox's Bazar:
798 Mitigating Risks and Promoting Gender, Governance, and Localization of Humanitarian
799 Responses in the COVID-19 Era. *COVID-19 Responses for Equity (CORE)*
800 [https://c19re.org/project/bridging-communities-in-coxs-bazar-mitigating-risks-and-](https://c19re.org/project/bridging-communities-in-coxs-bazar-mitigating-risks-and-promoting-gender-governance-and-localization-of-humanitarian-responses-in-the-covid-19-era/)
801 [promoting-gender-governance-and-localization-of-humanitarian-responses-in-the-covid-19-](https://c19re.org/project/bridging-communities-in-coxs-bazar-mitigating-risks-and-promoting-gender-governance-and-localization-of-humanitarian-responses-in-the-covid-19-era/)
802 [era/](https://c19re.org/project/bridging-communities-in-coxs-bazar-mitigating-risks-and-promoting-gender-governance-and-localization-of-humanitarian-responses-in-the-covid-19-era/) [Accessed September 30, 2021]
- 803 22. ACAPS. Vulnerabilities in the Rohingya refugee camps. Cox's Bazar (2019).
804 [https://www.acaps.org/sites/acaps/files/products/files/20191220_acaps_analysis_hub_in_c](https://www.acaps.org/sites/acaps/files/products/files/20191220_acaps_analysis_hub_in_coxs_vulnerabilities_in_the_rohingya_refugee_camps_0.pdf)
805 [oxs_vulnerabilities_in_the_rohingya_refugee_camps_0.pdf](https://www.acaps.org/sites/acaps/files/products/files/20191220_acaps_analysis_hub_in_coxs_vulnerabilities_in_the_rohingya_refugee_camps_0.pdf) [Accessed March 13, 2022]
- 806 23. Jean K, Miks J. Preventing a silent crisis for Rohingya women and girls during COVID-19
807 pandemic. *UNICEF* (2020) [https://www.unicef.org/coronavirus/preventing-silent-crisis-](https://www.unicef.org/coronavirus/preventing-silent-crisis-rohingya-women-and-girls-during-covid-19-pandemic)
808 [rohingya-women-and-girls-during-covid-19-pandemic](https://www.unicef.org/coronavirus/preventing-silent-crisis-rohingya-women-and-girls-during-covid-19-pandemic) [Accessed February 14, 2022]
- 809 24. Toma I, Chowdhury M, Laiju M, Gora N, Padamada N, Novales C, Opolot S, Haider D, Debebe
810 S. Rohingya Refugee Response Gender Analysis: Recognizing and responding to gender
811 inequalities. Oxford (2017). 1–70 p.
812 [https://oxfamlibrary.openrepository.com/bitstream/handle/10546/620528/rr-rohingya-](https://oxfamlibrary.openrepository.com/bitstream/handle/10546/620528/rr-rohingya-refugee-response-gender-analysis-010818-en.pdf?sequence=1&isAllowed=y)
813 [refugee-response-gender-analysis-010818-en.pdf?sequence=1&isAllowed=y](https://oxfamlibrary.openrepository.com/bitstream/handle/10546/620528/rr-rohingya-refugee-response-gender-analysis-010818-en.pdf?sequence=1&isAllowed=y) [Accessed
814 March 7, 2022]
- 815 25. Guglielmi S, Seager J, Mitu K, Baird S, Jones N. Exploring the impacts of COVID-19 on
816 Rohingya adolescents in Cox's Bazar: A mixed-methods study. *Journal of Migration and*
817 *Health* (2020) **1–2**:100031. doi: <https://doi.org/10.1016/j.jmh.2020.100031>
- 818 26. Ansar A, Faisal A, Khaled M. From solidarity to resistance: host communities' evolving
819 response to the Rohingya refugees in Bangladesh. doi: 10.1186/s41018-021-00104-9
- 820 27. World Bank Group. Impacts of Covid-19 on Work and Wages in Cox's Bazar: Part 1-Host
821 Communities. Dhaka (2020).
822 <https://documents1.worldbank.org/curated/en/163691622731451722/pdf/Impacts-of->

- 823 COVID-19-on-Work-and-Wages-in-Coxs-Bazar-Part-1-Host-Communities.pdf [Accessed July
824 1, 2021]
- 825 28. ISCG Gender Hub, ACAPS, NPM Analysis Hub, Care Bangladesh, Oxfam International, UN
826 Women. In the Shadows of the Pandemic: The Gendered Impact of Covid-19 on Rohingya
827 and Host Communities. Cox's Bazar (2020).
828 [https://reliefweb.int/sites/reliefweb.int/files/resources/in_the_shadows_of_the_pandemic](https://reliefweb.int/sites/reliefweb.int/files/resources/in_the_shadows_of_the_pandemic_gendered_impact_of_covid19_on_rohingya_and_host_communities_october2020.pdf)
829 [_gendered_impact_of_covid19_on_rohingya_and_host_communities_october2020.pdf](https://reliefweb.int/sites/reliefweb.int/files/resources/in_the_shadows_of_the_pandemic_gendered_impact_of_covid19_on_rohingya_and_host_communities_october2020.pdf)
830 [Accessed September 26, 2021]
- 831 29. Rahman S, Ahmed O, Hasan R, Yeahyea H binth, Azam SW, Hossain Zihan. Covid-19's Impact
832 on Host communities across Cox's Bazar. Cox's Bazar (2020). [https://www.inspira-](https://www.inspira-bd.com/covid-19-retrospect-covid-19s-impact-on-host-communities-across-coxs-bazar/)
833 [bd.com/covid-19-retrospect-covid-19s-impact-on-host-communities-across-coxs-bazar/](https://www.inspira-bd.com/covid-19-retrospect-covid-19s-impact-on-host-communities-across-coxs-bazar/)
834 [Accessed July 1, 2021]
- 835 30. ACAPS-NPM Analysis Hub. Rohingya crisis: Host Communities Review. Cox's Bazar (2018). 1–
836 18 p. <https://www.acaps.org/special-report/rohingya-crisis-host-communities-review>
837 [Accessed March 7, 2022]
- 838 31. World Food Programme, Bangladesh Food Security Sector. Rohingya Emergency
839 Vulnerability Assessment (REVA) - Summary Report. Cox's Bazar (2017).
840 <https://reliefweb.int/sites/reliefweb.int/files/resources/WFP-0000050429.pdf> [Accessed
841 March 7, 2022]
- 842 32. World Food Programme. Host Community Brief. Cox's Bazar (2020).
843 [https://docs.wfp.org/api/documents/WFP-](https://docs.wfp.org/api/documents/WFP-0000121054/download/?_ga=2.250719366.1841149486.1625074697-187706802.1625074697)
844 [0000121054/download/?_ga=2.250719366.1841149486.1625074697-](https://docs.wfp.org/api/documents/WFP-0000121054/download/?_ga=2.250719366.1841149486.1625074697-187706802.1625074697)
845 [187706802.1625074697](https://docs.wfp.org/api/documents/WFP-0000121054/download/?_ga=2.250719366.1841149486.1625074697-187706802.1625074697) [Accessed July 1, 2021]
- 846 33. ACAPS-NPM Analysis Hub. Considering age and disability in the Rohingya response. Cox's
847 Bazar (2021). 1–7 p.
848 [https://www.acaps.org/sites/acaps/files/products/files/20210208_acaps_cxb_analysis_hub](https://www.acaps.org/sites/acaps/files/products/files/20210208_acaps_cxb_analysis_hub_secondary_data_review_on_disability_0.pdf)
849 [_secondary_data_review_on_disability_0.pdf](https://www.acaps.org/sites/acaps/files/products/files/20210208_acaps_cxb_analysis_hub_secondary_data_review_on_disability_0.pdf) [Accessed March 7, 2022]
- 850 34. Mistry SK, Ali ARMM, Yadav UN, Ghimire S, Hossain MB, Saha M, Reza S, Bakshi P, Bhuiyan
851 ATMRH, Harris M. Misconceptions about COVID-19 among older Rohingya (forcefully
852 displaced Myanmar nationals) adults in Bangladesh: findings from a cross-sectional study.
853 *BMJ Open* (2021) **11**: doi: 10.1136/bmjopen-2021-050427
- 854 35. Mistry SK, Ali ARMM, Yadav UN, Huda MN, Ghimire S, Bestman A, Hossain MB, Reza S,
855 Qasim R, Harris MF. Difficulties faced by older Rohingya (forcibly displaced Myanmar
856 nationals) adults in accessing medical services amid the COVID-19 pandemic in Bangladesh.
857 *BMJ Global Health* (2021) **6**:e007051. doi: 10.1136/BMJGH-2021-007051
- 858 36. Kepayet M. COVID-19: 1.1 million refugees are extremely vulnerable in Bangladesh. *Modern*
859 *Diplomacy* (2020) [https://moderndiplomacy.eu/2020/05/20/covid-19-1-1-million-refugees-](https://moderndiplomacy.eu/2020/05/20/covid-19-1-1-million-refugees-are-extremely-vulnerable-in-bangladesh/)
860 [are-extremely-vulnerable-in-bangladesh/](https://moderndiplomacy.eu/2020/05/20/covid-19-1-1-million-refugees-are-extremely-vulnerable-in-bangladesh/) [Accessed June 3, 2020]
- 861 37. Parray AA, Kaufman S, Karki J, Chhetri D, Dutta M, Wani A, Mohmand S, Ullah MdI, Tamjid A,
862 Bushra MS, et al. "A Saga of Vulnerability" - The Impact of COVID-19 on Yeminis Women.
863 *Journal of Gynecology and Women's Health* (2021) **22**:01–04. doi:
864 10.19080/JGWH.2021.22.556077

38. Ogbe E, Parray AA, Asi Y. "The gendered impacts of COVID-19 in the Mediterranean region: A focus on gender-based violence.," In: S&D Group, editor. *Gender gap in the Mediterranean during the Covid-19 pandemic*. Socialists and Democrats in the European Parliament (2021). p. 19–27 <https://case-research.eu/en/e-book-gender-gap-in-the-mediterranean-during-the-covid-19-pandemic-101702> [Accessed March 12, 2021]
39. Chauhan BG, Jungari S. Prevalence and predictors of spousal violence against women in Afghanistan: evidence from Demographic and Health Survey data. *Journal of Biosocial Science* (2021)1–18. doi: 10.1017/S0021932020000759
40. World Health Organization. Rohingya Crisis Situation Report #19. Cox's Bazar (2021).
41. ISCG. Situation Report Rohingya Refugee Crisis. Cox's Bazar (2021). https://cdn.who.int/media/docs/default-source/searo/bangladesh/bangladesh---rohingya-crisis---pdf-reports/sitreps/2021/who-cxb-situation-report-2.pdf?sfvrsn=e984927c_7 [Accessed December 13, 2021]
42. IMMAP. COVID-19 SITUATION ANALYSIS. Dhaka (2020). https://reliefweb.int/sites/reliefweb.int/files/resources/iMMAP_COVID-19_Bangladesh_Analysis%20Report_022021.pdf [Accessed July 1, 2021]
43. WHO. COVID-19 Situation Report #16. Dhaka (2020). <https://www.who.int/docs/default-source/searo/bangladesh/covid-19-who-bangladesh-situation-reports/who-covid-19-update-16-20200615.pdf> [Accessed July 29, 2021]
44. Jean K, Miks J. Preventing a silent crisis for Rohingya women and girls during COVID-19 pandemic. *UNICEF* (2020) <https://www.unicef.org/coronavirus/preventing-silent-crisis-rohingya-women-and-girls-during-covid-19-pandemic> [Accessed September 26, 2021]
45. Un Women. "The Virus has changes us all": Experiences of women with disabilities during the COVID-19 pandemic. New York (2021). https://reliefweb.int/sites/reliefweb.int/files/resources/Brief-Experiences-of-women-with-disabilities-in-the-Asia-Pacific-region-during-COVID-19-en_0.pdf [Accessed February 10, 2022]

Funding Information

This study utilizes a sub-set of one larger participatory action research project funded by the International Development Research Centre, Canada.

Acknowledgments

The authors are also thankful to the larger research team members; Professor M. Shafiq Rahman, Kazi Sameen Nasar, Saifa Raz, Abdul Jabbar Topu, ASM Nadim, Zuhra Mahfuza Inam, and Dr. Ashrafuzzaman Khan, for their support during the data collection.

Authors Contributions-

901 Conceptualization: AAP, RS, SFR, BA
 902 Intro: AAP and RS
 903 Methods: AAP and BA
 904 Data Collection: AAP, RS, MRH, ZMI, AJT, and ASMN
 905 Results: AAP, RS, and MRH
 906 Discussion: AAP and MRH
 907 Conclusion: AAP and RS
 908 Referencing: AAP
 909 Overall Coordination: AAP
 910 Overall review and approval: All authors
 911