

Decreased cerebral blood flow in non-hospitalized adults who self-isolated due to COVID-19

Running Title: Cerebral blood flow and COVID-19

William S.H. Kim^{1,2}; Xiang Ji³; Eugenie Roudaia⁴; J. Jean Chen^{1,4,5}; Asaf Gilboa^{4,6}; Allison Sekuler^{4,6,7}; Fuqiang Gao^{2,3}; Zhongmin Lin^{1,8}; Aravinthan Jegatheesan^{1,8}; Mario Masellis^{2,3,9}; Maged Goubran^{1,2,8,10}; Jennifer S. Rabin⁹⁻¹¹; Benjamin Lam^{2,3,9}; Ivy Cheng¹²⁻¹⁴; Robert Fowler^{14,15}; Chris Heyn^{2,16}; Sandra E. Black^{2,3,9}; Simon J. Graham^{1,2,8,*}; Bradley J. MacIntosh^{1,2,8,17,*}

¹Department of Medical Biophysics, University of Toronto, Toronto, Ontario, Canada

²Hurvitz Brain Sciences Program, Sunnybrook Research Institute, Toronto, Ontario, Canada

³LC Campbell Cognitive Neurology Research Group, Sunnybrook Health Sciences Centre, Toronto, Ontario, Canada

⁴Rotman Research Institute, Baycrest Academy for Research and Education, Toronto, Ontario, Canada

⁵Institute of Biomedical Engineering, University of Toronto, Toronto, Ontario, Canada

⁶Department of Psychology, University of Toronto, Toronto, Ontario, Canada

⁷Department of Psychology, Neuroscience & Behaviour, McMaster University, Hamilton, Ontario, Canada

⁸Physical Sciences Platform, Sunnybrook Research Institute, Toronto, Ontario, Canada

⁹Division of Neurology, Department of Medicine, Sunnybrook Health Sciences Centre, University of Toronto, Toronto, Ontario, Canada

¹⁰Harquail Centre for Neuromodulation, Sunnybrook Research Institute, Toronto, Ontario, Canada

- 24 ¹¹Rehabilitation Sciences Institute, University of Toronto, Toronto, Ontario, Canada
- 25 ¹²Evaluative Clinical Sciences, Sunnybrook Research Institute, Toronto, Ontario, Canada
- 26 ¹³Integrated Community Program, Sunnybrook Research Institute, Toronto, Ontario, Canada
- 27 ¹⁴Department of Medicine, University of Toronto, Toronto, Ontario, Canada
- 28 ¹⁵Emergency & Critical Care Research Program, Sunnybrook Research Institute, Toronto,
- 29 Ontario, Canada
- 30 ¹⁶Department of Medical Imaging, University of Toronto, Toronto, Ontario, Canada
- 31 ¹⁷Computational Radiology & Artificial Intelligence Unit, Division of Radiology and Nuclear
- 32 Medicine, Oslo University Hospital, Oslo, Norway
- 33 * indicates senior authorship
- 34 **Corresponding Author:**
- 35 Bradley J. MacIntosh, Sunnybrook Research Institute, University of Toronto, 2075 Bayview
- 36 Avenue, Room M6-180, M4N 3M5, Toronto, ON, Canada
- 37 Email: brad.macintosh@utoronto.ca

Abstract

The long-term consequences of coronavirus disease 2019 (COVID-19) on brain physiology and function are not yet well understood. From the recently described NeuroCOVID-19 study, we examined cerebral blood flow (CBF) in 50 participants recruited to one of two groups: 1) adults who previously self-isolated at home due to COVID-19 ($n = 39$; 116.5 ± 62.2 days since positive diagnosis), or 2) controls who experienced flu-like symptoms but had a negative COVID-19 diagnosis ($n = 11$). Participants underwent arterial spin labeling magnetic resonance imaging at 3 T to yield measures of CBF. Voxel-wise analyses of CBF were performed to assess for between-group differences, after controlling for age and sex. Relative to controls, the COVID-19 group exhibited decreased CBF in the thalamus, orbitofrontal cortex, and regions of the basal ganglia. Within the COVID-19 group, CBF differences in occipital and parietal regions were observed between those with ($n = 11$) and without ($n = 28$) self-reported on-going fatigue. These results suggest long-term changes in brain physiology in adults across the post-COVID-19 timeframe. Moreover, CBF may aid in understanding the heterogeneous symptoms of the post-COVID-19 condition. Future longitudinal studies are needed to further characterize the consequences of COVID-19 on the brain.

Keywords: cerebral blood flow; COVID-19; SARS-CoV-2; fatigue; post-COVID-19

1. Introduction

Growing evidence suggests that the consequences of severe acute respiratory syndrome coronavirus 2 (SARS-CoV-2) infection extend beyond the respiratory system.^{1,2} As many as two thirds of individuals suffering from coronavirus disease 2019 (COVID-19) are reported to experience neurological and/or psychiatric symptoms during acute stages of infection.³⁻⁵ In some cases, symptoms have been reported to persist or even develop in the months following infection;⁶ this stage of COVID-19 has been referred to as the “post-COVID-19 condition” by the World Health Organization. Symptoms such as fatigue and so-called “brain fog” prevail in the post-COVID-19 timeframe;^{2,7,8} however, the long-term impact of COVID-19 on the brain is not well characterized. Efforts aimed at describing the post-COVID-19 condition as it relates to the brain are needed to mitigate pressure on strained healthcare systems worldwide.⁹

The effects of SARS-CoV-2 infection on the central nervous system are complex and likely involve multiple potential pathways. One theorized pathway is the nasal mucosal route of entry, whereby the virus may travel from the olfactory bulb to the primary olfactory cortex, which has direct connections to several brain regions including the thalamus, orbitofrontal cortex, and other midbrain regions;¹⁰ however, conclusive evidence of this pathway remains elusive. Another potential pathway may involve SARS-CoV-2 infiltrating cells expressing the angiotensin-converting enzyme (ACE-2) receptor, notably endothelial cells of the vasculature,¹¹ and thus constituents of the neurovascular unit. For example, stroke and cerebrovascular disease secondary to COVID-19 have been reported.^{12,13} This notion of neurovascular involvement is further supported by a recent study demonstrating SARS-CoV-2 infection of tissue-cultured pericyte-like cells.¹⁴ In both cases, particularly the ACE-2 receptor pathway,¹⁵ SARS-CoV-2-induced neuroinflammation is likely to contribute to the post-COVID-19 condition.

Neuroimaging studies have shown that COVID-19 is associated with alterations to brain structure and/or punctate lesions (i.e., microbleeds, white matter hyperintensities), often in small samples of acutely infected individuals.^{12,16–20} In a unique study using pre- and post-infection data from a large UK Biobank sample, Douaud et al. observed longitudinal decreases in grey matter thickness, particularly in limbic regions, among adults who self-isolated or were hospitalized due to COVID-19.²¹ There are few cohort neuroimaging studies focusing on brain physiology in the post-COVID-19 timeframe;^{1,22–28} such imaging contrasts may be particularly relevant given the putative involvement of the vasculature in SARS-CoV-2 infection.^{29,30} Of the studies that exist, most involve adults who were hospitalized or in intensive care due to a more severe course of COVID-19.

As part of the Toronto-based NeuroCOVID-19 study,³¹ we conducted arterial spin labeling (ASL) magnetic resonance imaging (MRI) to probe cerebral blood flow (CBF), a measure of brain physiology and function, in non-hospitalized adults recovering from COVID-19. Our primary aim was to compare voxel-wise CBF (with and without partial volume correction) between adults who previously self-isolated at home due to COVID-19 and controls who experienced flu-like symptoms but tested negative for COVID-19. We hypothesized that the adults who previously self-isolated due to COVID-19 would exhibit altered CBF relative to controls, when assessed weeks/months beyond infection. Given the prevalence of fatigue as a symptom of the post-COVID-19 condition,^{7,8,32–35} we then performed an exploratory analysis of the association between self-reported fatigue and CBF among COVID-19 participants.

2. Materials and methods

2.1. Participants

Participants in the current study were recruited between May 2020 and September 2021 through the Department of Emergency Medicine at Sunnybrook Health Sciences Centre, physician referral, and community advertisements. Eligibility and consenting procedures were performed over phone or email. The Research Ethics Board at Sunnybrook Health Sciences Centre approved this study.

Inclusion criteria for this study included being between 20 and 75 years of age and having documented evidence of a positive or negative COVID-19 diagnosis, as determined by a provincially-approved facility through a nasopharyngeal and/or oropharyngeal swab and subsequent real-time reverse transcription polymerase chain reaction (PCR) test. Exclusion criteria for this study included previous diagnosis of dementia, an existing neurological disorder, previous traumatic brain injury, severe psychiatric illness, on-going unstable cardiovascular disease, or contraindications to MRI (e.g., ferromagnetic implants).

2.2. Study setting

Sunnybrook Health Sciences Centre is an academic tertiary level hospital. Prior to the pandemic, its emergency department received approximately 61,000 patients per year. Specialty services include trauma, interventional cardiology, stroke, oncology, neurosurgery, psychiatry, and high-risk obstetrics and gynecology. Its catchment area includes the Greater Toronto area and nearby regions (<https://sunnybrook.ca/content/?page=care-programs>).

2.3. Study design

The current study is an observational cohort neuroimaging study and is part of the NeuroCOVID-19 protocol, which has been previously described.³¹ We report on participants who were recruited to one of two groups: 1) adults who previously self-isolated at home due to COVID-19, or 2) controls who experienced flu-like symptoms but tested negative for COVID-19. Herein, we refer to the former as the COVID-19 group and the latter as the control group. The rationale for including this unique control group was that they may act as a better “baseline” against which the COVID-19 group could be compared (i.e., a group with non-specific flu-like symptoms who tested negative for COVID-19). Once non-infectious (i.e., following completion of a 14-day quarantine period and/or a negative PCR test), participants were invited for an on-site visit. Study staff and participants abided by the hospital’s infection prevention and control guidelines.

The primary outcome measure of the current study is ASL-derived CBF. Other outcome measures were assessed using: 1) a self-reported questionnaire of flu-like symptoms, 2) the Cognition and Emotion Batteries from the National Institutes of Health (NIH) Toolbox,^{36,37} and 3) the 40-odorant University of Pennsylvania Smell Identification Test (UPSIT, Sensonics International).³⁸ The latter two assessments have been well-validated.^{39–41}

The self-reported questionnaire of symptoms assessed whether participants were currently experiencing, had previously experienced, or had never experienced any flu-like symptoms including: fever, cough, sore throat, shortness of breath, fatigue, gastrointestinal symptoms, and/or smell/taste changes. Study staff ensured that symptoms were understood as being impairing to activities of daily living.

The Cognition Battery from the NIH Toolbox resulted in two age-corrected standard scores (mean = 100, standard deviation = 15) of fluid and crystallized cognition. The Emotion Battery resulted in three T-scores (mean = 50, standard deviation = 10) of negative affect, social satisfaction, and well-being. Note that a higher T-score for negative affect reflects more unpleasant moods and/or emotions. The interpretation of these scores has been previously described (<https://nihtoolbox.force.com/s/article/nih-toolbox-scoring-and-interpretation-guide>).

The UPSIT was administered as reports of olfactory dysfunction are a prevalent symptom of COVID-19.^{7,8} This assessment resulted in an UPSIT score (calculated as the number of odorants correctly identified) and a diagnosis of olfactory function (normosmia, mild hyposmia, moderate hyposmia, severe hyposmia to total anosmia). These diagnoses were determined as a function of UPSIT score and sex.

2.4. MRI acquisition

The MRI sequences used in this study consisted of T1-weighted and pseudo-continuous ASL acquired on a 3 T MRI system (Magnetom Prisma, Siemens Healthineers, Erlangen, Germany). T1-weighted images were acquired in three dimensions using an isotropic sagittal magnetization-prepared rapid gradient-echo sequence (TR/TE/TI = 2500/4.7/1100 ms, spatial resolution = 1 mm³, field-of-view = 256 mm, slices = 192, duration = 3:45 min:s). ASL images were acquired in three dimensions using an echo-planar turbo gradient-spin echo sequence with background suppression (TR/TE = 4100/36.8 ms, isotropic spatial resolution = 2.5 mm³, field-of-view = 240 mm, label duration = 1500 ms, post-label delay = 1800 ms, 7 control-label pairs, duration = 4:27 min:s).⁴² Proton-density ASL reference images were acquired with a TR of 4.1 s for CBF calibration.

2.5. MRI processing

MRI processing was performed using tools from the FMRIB Software Library (FSL, version 6.0.3).⁴³ T1-weighted images were processed using *fsl_anat* with steps that included brain extraction, tissue segmentation, and non-linear registration to Montreal Neurological Institute (MNI) space.

ASL images were processed using *oxford_asl* with steps that included motion correction, spatial regularization,⁴⁴ generation of control-tag difference images, voxel-wise calibration using the ASL reference image and assumed values from the literature,⁴⁵ linear registration to structural space followed by non-linear registration to MNI space,⁴⁶ and spatial smoothing with a Gaussian kernel of full-width at half maximum of 5 mm. The resulting CBF maps were then intensity-normalized (i.e., each CBF map was scaled to a global mean of 1) to account for between-participant global CBF differences.⁴⁷ Two individuals (WSHK, BJM) visually inspected the CBF maps for quality control.

2.6. Statistical analysis

Demographic and clinical characteristics were compared between groups using independent samples t-tests for continuous data and chi-squared tests for categorical data. In cases when continuous data were non-normal (i.e., as assessed by the Shapiro-Wilk test), Mann-Whitney U-tests were used. In cases when categorical data had an expected value less than 5 (i.e., in a contingency table), Fisher's exact tests were used. The threshold for statistical significance of demographic and clinical variables was set at 0.05.

For our primary aim, we performed between-group (i.e., COVID-19 vs. control) whole-brain voxel-wise analyses of CBF using two-tailed independent samples t-tests, controlling for age and sex. We used *3dFWHMx* and *3dClustSim* from the Analysis of Functional NeuroImages

(AFNI, version 22.0.05) to estimate cluster-extent thresholds at a family-wise error rate of 0.05 with a cluster-forming threshold of 0.005. In addition, we performed one sensitivity analysis and one exploratory analysis in support of the primary aim.

Sensitivity analysis – Partial volume correction: We repeated the between-group comparison (i.e., COVID-19 vs. control) after including partial volume correction as an additional ASL processing step. The rationale for this sensitivity analysis is that ASL images were collected at a spatial resolution similar to the average thickness of the cortex, which may lead to biases in CBF estimation.⁴⁵ Thus, due diligence was required to interpret CBF estimates and the resulting between-group differences. It is worth noting that currently available partial volume correction methods are inconsistent and may hinder interpretation; thus, it is recommended that partial volume correction be reported parallel to analyses using uncorrected CBF estimates.⁴⁵ This additional processing step was implemented in *oxford_asl*.⁴⁸

Exploratory analysis – Association between fatigue and CBF within the COVID-19 group: Given the prevalence of fatigue as a symptom of the post-COVID-19 condition,^{7,8,32,33} we examined whether COVID-19 participants who self-reported as experiencing on-going fatigue (n = 11) exhibited CBF differences compared to COVID-19 participants who previously reported fatigue that had resolved by the time of the assessment or did not experience fatigue at all (n = 28). Fatigue was determined using the self-reported questionnaire of symptoms.

3. Results

3.1. Demographic & clinical characteristics

At the time of analysis, a total of 50 participants (39 COVID-19, 11 controls) met eligibility criteria and had ASL and T1-weighted images available. Demographic and clinical characteristics are presented in Table 1.

Briefly, groups were well-matched for age and sex. COVID-19 participants were scanned 116.5 ± 62.6 [8, 312] days after receiving a positive diagnosis. Self-reported fatigue (COVID-19, 28.2%; control, 36.4%) and shortness of breath (COVID-19, 20.5%; control, 27.3%) were the most prevalent on-going symptoms across the cohort (Figure 1). Notably, 92.3% of COVID-19 participants and 72.7% of controls had experienced fatigue at some point between the PCR test and the time of the assessment. Significantly more COVID-19 participants had previously experienced or were currently experiencing smell/taste changes compared to controls ($X^2 = 6.04$, $p < 0.05$). There were no between-group differences in fluid or crystallized cognition as assessed by the NIH Toolbox Cognition Battery, negative affect, social satisfaction, or well-being as assessed by the NIH Toolbox Emotion Battery (n.b., three COVID-19 participants did not complete the Emotion Battery), or UPSIT score (n.b., 11 COVID-19 participants and two controls had missing/faulty UPSIT data).

3.2. Differences in CBF between COVID-19 and control groups

Relative to controls, the COVID-19 group exhibited significantly decreased CBF in a large cluster of voxels encompassing the thalamus, orbitofrontal cortex, and regions of the basal ganglia, including the caudate, nucleus accumbens, putamen, and pallidum (Figure 2 and Table

2). There were no clusters in which the COVID-19 group had significantly increased CBF relative to controls.

3.3. Sensitivity analysis – Differences in CBF between COVID-19 and control groups with partial volume correction

Our sensitivity analysis with partial volume correction resulted in a similar cluster of smaller extent compared to the primary analysis (Figure 3 and Table 2). Again, there were no clusters in which the COVID-19 group had significantly increased CBF relative to controls.

3.4. Exploratory analysis – Association between fatigue and CBF within the COVID-19 group

Within the COVID-19 group, we observed between-subgroup CBF differences between those with and without on-going fatigue. On-going fatigue was characterized by a cluster of increased CBF in superior occipital and parietal regions (superior lateral occipital cortex, angular gyrus, superior parietal lobule, supramarginal gyrus) and a cluster of decreased CBF in inferior occipital regions (lingual gyrus, occipital fusiform gyrus, intracalcarine cortex, precuneous cortex) (Figure 4 and Table 2).

4. Discussion

In this study, we investigated whether adults who previously self-isolated at home due to COVID-19 would exhibit alterations in CBF when compared against controls who experienced flu-like symptoms but tested negative for COVID-19. COVID-19 participants exhibited significantly decreased CBF in the thalamus, orbitofrontal cortex, and regions of the basal ganglia compared to controls. We further examined the effect of fatigue within the COVID-19 group, which revealed between-subgroup CBF differences in occipital and parietal regions.

These results provide support for long-term changes in brain physiology in adults across the post-COVID-19 timeframe.

Although COVID-19 is primarily a respiratory illness, the cerebrovasculature is also susceptible to damage as endothelial cells and pericytes are prone to viral invasion.^{14,29} The brain's vasculature interfaces with the complex neurovascular unit, for instance, in the regulation of CBF.⁴⁹ Furthermore, the location of potential brain involvement in relation to SARS-CoV-2 is likely to vary regionally, with some evidence to suggest that relative to the rest of the brain, ACE-2 receptor expression is highest in the thalamus, the paraventricular nuclei of the thalamus, and more generally in regions proximal to the ventricles.⁵⁰ Notably, we found significantly decreased CBF in the anterior thalamus, which contains the paraventricular nuclei of the thalamus, a key region of the brain's anxiety network.⁵¹ Moreover, decreased thalamic glucose metabolism, as measured by positron emission tomography (PET), has been observed at both acute and chronic stages of recovery from COVID-19.^{26,27,52}

Decreased CBF was also detected in regions of the basal ganglia, including the caudate, nucleus accumbens, putamen, and pallidum. In particular, the caudate has been reported in a longitudinal PET study that observed decreased glucose metabolism in seven adults recovering from COVID-19, up to 6 months post-infection.²⁷ Multivariate methods have also revealed that glucose metabolism within the caudate is a distinguishing feature between COVID-19 patients and controls.²⁴ We also observed decreased CBF within the orbitofrontal cortex, a region widely reported as being associated with SARS-CoV-2 infection.^{12,21,53–56} Together with the thalamus and regions of the basal ganglia, the orbitofrontal cortex is a key region of the cortico-basal ganglia-thalamic loop, a circuit involved in complex behaviours including affect regulation and reward-based decision-making,⁵⁷ as well as in relation to neurological and psychiatric

disorders.^{58,59} Moreover, the orbitofrontal cortex also plays an important role in olfaction and is often referred to as the secondary olfactory cortex.⁶⁰ The results of the current study align with previous PET studies that find decreased glucose metabolism within the orbitofrontal cortex, and more generally within the frontal lobe. In an early case report of one healthy 27-year-old with COVID-19 experiencing persistent anosmia, Karimi-Galougahi et al. reported decreased glucose metabolism in the left orbitofrontal cortex.⁵⁵ Hosp et al. reported frontoparietal hypometabolism in 10 out of 15 adults with subacute COVID-19.²⁴ Guedj et al. reported frontal hypometabolism in 35 adults that were 3 weeks beyond infection, and that significant clusters were correlated with higher occurrence of symptoms, such as anosmia.²⁶ Finally, Kas et al. reported a consistent pattern of orbitofrontal, dorsolateral, and mesiofrontal hypometabolism in seven adults with acute COVID-19-related encephalopathy, despite heterogenous symptomatology, and posited that COVID-19 is related to frontal lobe impairment.²⁷ Notably, the results from the latter study persisted until 6 months following infection. Altogether, the result of decreased CBF within the orbitofrontal cortex, along with the thalamus and regions of the basal ganglia, may reflect COVID-19-related disturbances to brain networks, olfactory function, and emotional/cognitive concerns. Future studies extending these potentially brain network-related results through investigations of functional and structural connectivity are warranted.

It is important to note that participants in the current study were recruited over the course of several pandemic waves in Ontario, each being associated with a different distribution of variants of concern (Figure 1). Thus, it is probable that COVID-19 participants were infected with different strains of SARS-CoV-2, likely spanning from the Alpha variant to the Delta variant. We further note that these participants were recruited prior to the emergence of the

Omicron variant which, despite its high transmissibility, is believed to be less severe than previous strains.^{61,62}

Our comparison of COVID-19 participants with and without fatigue resulted in between-subgroup CBF differences, primarily in occipital and parietal regions of the brain. There have been efforts to characterize COVID-19 based on symptoms, with the hope of predicting severity and likelihood of the post-COVID-19 condition.^{32,33} Others have observed fatigue-related differences in brain structure and function in those recovering from COVID-19,³⁵ such as functional connectivity alterations in parietal regions.³⁴ Interestingly, the post-COVID-19 condition shares many common features with chronic fatigue syndrome (i.e., myalgic encephalomyelitis), a disorder that can be triggered by viral infection,⁶³ and that is characterized by decreased CBF, such as within the lingual gyrus.^{64,65} Therefore, these fatigue-related CBF differences amongst COVID-19 participants could help guide therapeutic efforts in treating fatigue as a symptom of the post-COVID-19 condition. We note that while brain-behaviour investigations in the context of COVID-19 are important in understanding symptoms, this fatigue-related analysis is a “scratch of the surface”. Higher-order multivariate analyses (e.g., principal component analysis) with larger sample sizes will be better poised to answer such questions.

These results need to be interpreted in the context of several limitations. First, although well-matched, the sample sizes of the two groups were modest and unequal; furthermore, a power analysis was not performed. To our knowledge, the current study benefits from the largest ASL dataset focusing on non-hospitalized adults in the post-COVID-19 timeframe. Moreover, recruitment for the NeuroCOVID-19 study is on-going and will address these issues in future studies. Second, our recruitment may be confounded by selection bias. For example, the current

study's cohort was comprised of 66% female and 72% Caucasian participants. We further note that participants needed internet access to be screened for eligibility. Third, our control group exhibited flu-like symptoms of unknown origin. The recruitment of this unique control group is a relatively novel aspect of this study, as these participants are a de-novo sample of adults that experienced non-specific flu-like symptoms during the pandemic. Fourth, ASL images were acquired at a spatial resolution comparable to the average thickness of the cortex, which may be susceptible to partial volume error.⁴⁵ To address this, we included partial volume correction as an additional ASL processing step in a sensitivity analysis, which did not drastically change the results. Fifth, our fatigue-related exploratory analysis relied on self-reported symptoms. Study staff ensured that on-going fatigue was understood as being impairing to activities of daily living. Finally, the data used in this study are cross-sectional and lack a pre-infection assessment.²¹ Further investigation into longitudinal changes of these participants will be performed as part of the NeuroCOVID-19 study. It may also be feasible to access pre-pandemic repository data from age- and sex-matched individuals.

In conclusion, we observed decreased CBF in those recovering from COVID-19 relative to controls. These decreases were present months after acute infection and were localized to regions that have previously been highlighted as related to SARS-CoV-2 infection. We also observed CBF differences in relation to fatigue within the COVID-19 group, suggesting that CBF may aid in parsing the heterogeneous symptoms associated with the post-COVID-19 condition. In all, these results suggest that the post-COVID-19 condition may be associated with long-term effects on brain physiology and function. Future studies that replicate and further characterize such effects are warranted.

Acknowledgments

The authors wish to thank all study participants and staff (Ellen Cohen, Garry Detzler, Ruby Endre, Haddas Grosbein, Masud Hussain, Devin Sodums) for their time and contributions to this study. We thank Dr. Danny J.J. Wang from the University of Southern California for providing the 3D pCASL sequence.

Funding

This study is funded in part by the Sunnybrook Foundation, the Dr. Sandra Black Centre for Brain Resilience & Recovery, a Canadian Institutes of Health Research (CIHR) Project Grant (165981), and a CIHR Operating Grant on Emerging COVID-19 Research Gaps and Priorities (177756).

Authors' contributions

Study design: WSHK, XJ, ER, JJC, AG, AS, FG, ZL, AJ, MM, MG, JR, BL, IC, RF, CH, SEB, SJG, BJM. Data collection: XJ, ER, ZL, AJ, SJG, BJM. Data analysis and interpretation: WSHK, XJ, ER, JJC, AG, AS, FG, ZL, AJ, MM, MG, JR, BL, IC, RF, CH, SEB, SJG, BJM. Manuscript writing: WSHK, XJ, ER, JJC, ZL, SJG, BJM. All authors revised and approved the final version of this manuscript.

Declaration of conflicting interests

SEB reports payments for contract research to her institution from GE Healthcare, Eli Lilly and Company, Biogen, Genentech, Optina Diagnostics, and Roche; consulting fees and payments related to an advisory board from Roche; and payments related to an advisory board, a speaker panel, talks, and an educational session from Biogen. There were peer-reviewed grants to her institution from the Ontario Brain Institute, Canadian Institutes of Health Research, Leducq

358 Foundation, Heart and Stroke Foundation of Canada, National Institutes of Health, Alzheimer's
 359 Drug Discovery Foundation, Brain Canada, Weston Brain Institute, Canadian Partnership for
 360 Stroke Recovery, Canadian Foundation for Innovation, Focused Ultrasound Foundation,
 361 Alzheimer's Association US, Department of National Defence, Montreal Medical International-
 362 Kuwait, Queen's University, Compute Canada Resources for Research Groups, CANARIE, and
 363 Networks of Centres of Excellence of Canada. She has participated on a data safety monitoring
 364 board or advisory board for the Conference Board of Canada, World Dementia Council, and
 365 University of Rochester. She has contributed to the mission and scientific leadership of the Small
 366 Vessel VCID Biomarker Validation Consortium, National Institute of Neurological Disorders
 367 and Stroke. No other conflicting interests were declared.

5. References

1. Raman B, Cassar MP, Tunnicliffe EM, et al. Medium-term effects of SARS-CoV-2 infection on multiple vital organs, exercise capacity, cognition, quality of life and mental health, post-hospital discharge. *EClinicalMedicine*. 2021;31. doi:10.1016/j.eclinm.2020.100683
2. Nalbandian A, Sehgal K, Gupta A, et al. Post-acute COVID-19 syndrome. *Nat Med*. 2021;27(4):601-615. doi:10.1038/s41591-021-01283-z
3. Varatharaj A, Thomas N, Ellul MA, et al. Neurological and neuropsychiatric complications of COVID-19 in 153 patients: a UK-wide surveillance study. *The Lancet Psychiatry*. 2020;7(10):875-882. doi:10.1016/S2215-0366(20)30287-X
4. Mao L, Jin H, Wang M, et al. Neurologic Manifestations of Hospitalized Patients with Coronavirus Disease 2019 in Wuhan, China. *JAMA Neurol*. Published online 2020. doi:10.1001/jamaneurol.2020.1127
5. Helms J, Kremer S, Merdji H, et al. Neurologic Features in Severe SARS-CoV-2 Infection. *N Engl J Med*. 2020;382(23):2268-2270. doi:10.1056/nejmc2008597
6. Taquet M, Geddes JR, Husain M, Luciano S, Harrison PJ. 6-month neurological and psychiatric outcomes in 236 379 survivors of COVID-19: a retrospective cohort study using electronic health records. *The Lancet Psychiatry*. 2021;8(5):416-427. doi:10.1016/S2215-0366(21)00084-5
7. Lopez-Leon S, Wegman-Ostrosky T, Perelman C, et al. More than 50 long-term effects of COVID-19: a systematic review and meta-analysis. *Sci Rep*. 2021;11(1):1-12. doi:10.1038/s41598-021-95565-8
8. Sudre CH, Murray B, Varsavsky T, et al. Attributes and predictors of long COVID. *Nat*

Med. 2021;27(4):626-631. doi:10.1038/s41591-021-01292-y

9. Menges D, Ballouz T, Anagnostopoulos A, et al. Burden of post-COVID-19 syndrome and implications for healthcare service planning: A population-based cohort study. *PLoS One*. 2021;16(7 July):e0254523. doi:10.1371/journal.pone.0254523

10. Meinhardt J, Radke J, Dittmayer C, et al. Olfactory transmucosal SARS-CoV-2 invasion as a port of central nervous system entry in individuals with COVID-19. *Nat Neurosci.* 2021;24(2):168-175. doi:10.1038/s41593-020-00758-5

11. Libby P, Lüscher T. COVID-19 is, in the end, an endothelial disease. *Eur Heart J.* 2020;41(32):3038-3044. doi:10.1093/eurheartj/ehaa623

12. Manca R, De Marco M, Ince PG, Venneri A. Heterogeneity in Regional Damage Detected by Neuroimaging and Neuropathological Studies in Older Adults With COVID-19: A Cognitive-Neuroscience Systematic Review to Inform the Long-Term Impact of the Virus on Neurocognitive Trajectories. *Front Aging Neurosci.* 2021;13:646908. doi:10.3389/fnagi.2021.646908

13. Ellul MA, Benjamin L, Singh B, et al. Neurological associations of COVID-19. *Lancet Neurol.* 2020;19(9):767-783. doi:10.1016/S1474-4422(20)30221-0

14. Wang L, Sievert D, Clark AE, et al. A human three-dimensional neural-perivascular ‘assembloid’ promotes astrocytic development and enables modeling of SARS-CoV-2 neuropathology. *Nat Med.* 2021;27(9):1600-1606. doi:10.1038/s41591-021-01443-1

15. Boldrini M, Canoll PD, Klein RS. How COVID-19 Affects the Brain. *JAMA Psychiatry.* 2021;78(6):682-683. doi:10.1001/jamapsychiatry.2021.0500

16. Chougar L, Shor N, Weiss N, et al. Retrospective Observational Study of Brain Magnetic Resonance Imaging Findings in Patients with Acute SARS-CoV-2 Infection and

- Neurological Manifestations. *Radiology*. Published online 2020.
17. Kremer S, Lersy F, De Sèze J, et al. Brain MRI findings in severe COVID-19: A retrospective observational study. *Radiology*. 2020;297(2):E242-E251. doi:10.1148/RADIOL.2020202222
18. Kremer S, Lersy F, Anheim M, et al. Neurologic and neuroimaging findings in patients with COVID-19: A retrospective multicenter study. *Neurology*. 2020;95(13):e1868-e1882. doi:10.1212/WNL.00000000000010112
19. Gulko E, Oleksk ML, Gomes W, et al. MRI brain findings in 126 patients with COVID-19: Initial observations from a descriptive literature review. *Am J Neuroradiol*. 2020;41(12):2199-2203. doi:10.3174/ajnr.A6805
20. Kandemirli SG, Dogan L, Sarikaya ZT, et al. Brain MRI findings in patients in the intensive care unit with COVID-19 infection. *Radiology*. 2020;297(1):E232-E235. doi:10.1148/radiol.2020201697
21. Douaud G, Lee S, Alfaro-Almagro F, et al. SARS-CoV-2 is associated with changes in brain structure in UK Biobank. *Nature*. Published online March 7, 2022:1-17. doi:10.1038/s41586-022-04569-5
22. Griffanti L, Raman B, Alfaro-Almagro F, et al. Adapting the UK Biobank Brain Imaging Protocol and Analysis Pipeline for the C-MORE Multi-Organ Study of COVID-19 Survivors. *Front Neurol*. 2021;12:753284. doi:10.3389/fneur.2021.753284
23. Qin Y, Wu J, Chen T, et al. Long-term microstructure and cerebral blood flow changes in patients recovered from COVID-19 without neurological manifestations. *J Clin Invest*. 2021;131(8). doi:10.1172/JCI147329
24. Hosp JA, Dressing A, Blazhenets G, et al. Cognitive impairment and altered cerebral

glucose metabolism in the subacute stage of COVID-19. *Brain*. 2021;144(4):1263-1276.

doi:10.1093/brain/awab009

25. Sollini M, Morbelli S, Ciccarelli M, et al. Long COVID hallmarks on [18F]FDG-PET/CT: a case-control study. *Eur J Nucl Med Mol Imaging*. 2021;48(10):3187-3197.

doi:10.1007/s00259-021-05294-3

26. Guedj E, Champion JY, Dudouet P, et al. 18F-FDG brain PET hypometabolism in patients with long COVID. *Eur J Nucl Med Mol Imaging*. 2021;48(9):2823-2833.

doi:10.1007/s00259-021-05215-4

27. Kas A, Soret M, Pyatigorskaya N, et al. The cerebral network of COVID-19-related encephalopathy: a longitudinal voxel-based 18F-FDG-PET study. *Eur J Nucl Med Mol Imaging*. Published online 2021. doi:10.1007/s00259-020-05178-y

28. Niesen M, Trotta N, Noel A, et al. Structural and metabolic brain abnormalities in COVID-19 patients with sudden loss of smell. *Eur J Nucl Med Mol Imaging*.

2021;48(6):1890-1901. doi:10.1007/s00259-020-05154-6

29. Whitmore HAB, Kim LA. Understanding the Role of Blood Vessels in the Neurological Manifestations of COVID-19. *Am J Pathol*. Published online June 2021.

doi:10.1016/j.ajpath.2021.04.017

30. Sashindranath M, Nandurkar HH. Endothelial dysfunction in the brain: Setting the stage for stroke and other cerebrovascular complications of covid-19. *Stroke*. 2021;52(5).

doi:10.1161/STROKEAHA.120.032711

31. MacIntosh BJ, Ji X, Chen JJ, et al. Brain structure and function in people recovering from COVID-19 after hospital discharge or self-isolation: a longitudinal observational study

protocol. *C open*. 2021;9(4):E1114-E1119. doi:10.9778/cmajo.20210023

32. Yelin D, Margalit I, Nehme M, et al. Patterns of Long COVID Symptoms: A Multi-Center Cross Sectional Study. *J Clin Med*. 2022;11(4). doi:10.3390/jcm11040898
33. Sudre CH, Lee KA, Lochlainn MN, et al. Symptom clusters in COVID-19: A potential clinical prediction tool from the COVID symptom study app. *Sci Adv*. 2021;7(12):4177. doi:10.1126/sciadv.abd4177
34. Hafiz R, Gandhi TK, Mishra S, et al. Assessing functional connectivity differences and work-related fatigue in surviving COVID-negative patients. *bioRxiv Prepr Serv Biol*. Published online February 1, 2022. doi:10.1101/2022.02.01.478677
35. Hafiz R, Gandhi TK, Mishra S, et al. Higher Limbic and Basal Ganglia volumes in surviving COVID-negative patients and the relations to fatigue. *medRxiv*. Published online November 24, 2021. doi:10.1101/2021.11.23.21266761
36. Gershon RC, Wagster M V., Hendrie HC, Fox NA, Cook KF, Nowinski CJ. NIH toolbox for assessment of neurological and behavioral function. *Neurology*. 2013;80(11 Suppl 3):S2. doi:10.1212/wnl.0b013e3182872e5f
37. Hodes RJ, Insel TR, Landis SC, NIH Blueprint for Neuroscience Research. The NIH toolbox: setting a standard for biomedical research. *Neurology*. 2013;80(11 Suppl 3):S1. doi:10.1212/wnl.0b013e3182872e90
38. Doty RL, Shaman P, Dann M. Development of the University of Pennsylvania smell identification test: A standardized microencapsulated test of olfactory function. *Physiol Behav*. 1984;32(3):489-502. doi:10.1016/0031-9384(84)90269-5
39. Weintraub S, Dikmen SS, Heaton RK, et al. Cognition assessment using the NIH Toolbox. *Neurology*. 2013;80(11 Suppl 3). doi:10.1212/wnl.0b013e3182872ded
40. Salsman JM, Butt Z, Pilkonis PA, et al. Emotion assessment using the NIH Toolbox.

Neurology. 2013;80(11 Suppl 3). doi:10.1212/wnl.0b013e3182872e11

41. Doty RL, Frye RE, Agrawal U. Internal consistency reliability of the fractionated and whole University of Pennsylvania Smell Identification Test. *Percept Psychophys*. 1989;45(5):381-384. doi:10.3758/BF03210709

42. Kilroy E, Apostolova L, Liu C, Yan L, Ringman J, Wang DJJ. Reliability of two-dimensional and three-dimensional pseudo-continuous arterial spin labeling perfusion MRI in elderly populations: Comparison with 15o-water positron emission tomography. *J Magn Reson Imaging*. 2014;39(4):931-939. doi:10.1002/jmri.24246

43. Jenkinson M, Beckmann CF, Behrens TEJ, Woolrich MW, Smith SM. FSL. *Neuroimage*. 2012;62(2):782-790. doi:10.1016/J.NEUROIMAGE.2011.09.015

44. Groves AR, Chappell MA, Woolrich MW. Combined spatial and non-spatial prior for inference on MRI time-series. *Neuroimage*. 2009;45(3):795-809. doi:10.1016/j.neuroimage.2008.12.027

45. Chappell MA, McConnell FAK, Golay X, et al. Partial volume correction in arterial spin labeling perfusion MRI: A method to disentangle anatomy from physiology or an analysis step too far? *Neuroimage*. 2021;238. doi:10.1016/j.neuroimage.2021.118236

46. Chappell MA, Groves AR, Whitcher B, Woolrich MW. Variational Bayesian inference for a nonlinear forward model. *IEEE Trans Signal Process*. Published online 2009. doi:10.1109/TSP.2008.2005752

47. Yoshiura T, Hiwatashi A, Noguchi T, et al. Arterial spin labelling at 3-T MR imaging for detection of individuals with Alzheimer's disease. *Eur Radiol*. 2009;19(12):2819-2825. doi:10.1007/s00330-009-1511-6

48. Chappell MA, Groves AR, MacIntosh BJ, Donahue MJ, Jezzard P, Woolrich MW. Partial

volume correction of multiple inversion time arterial spin labeling MRI data. *Magn Reson Med*. 2011;65(4):1173-1183. doi:10.1002/mrm.22641

49. Winkler EA, Bell RD, Zlokovic B V. Central nervous system pericytes in health and disease. *Nat Neurosci*. 2011;14(11):1398-1405. doi:10.1038/nn.2946

50. Chen R, Wang K, Yu J, et al. The Spatial and Cell-Type Distribution of SARS-CoV-2 Receptor ACE2 in the Human and Mouse Brains. *Front Neurol*. 2021;11. doi:10.3389/fneur.2020.573095

51. Kirouac GJ. The Paraventricular Nucleus of the Thalamus as an Integrating and Relay Node in the Brain Anxiety Network. *Front Behav Neurosci*. 2021;15. doi:10.3389/fnbeh.2021.627633

52. Guedj E, Million M, Dudouet P, et al. 18F-FDG brain PET hypometabolism in post-SARS-CoV-2 infection: substrate for persistent/delayed disorders? *Eur J Nucl Med Mol Imaging*. 2021;48(2):592-595. doi:10.1007/s00259-020-04973-x

53. Meyer PT, Hellwig S, Blazhenets G, Hosp JA. Molecular imaging findings on acute and long-term effects of COVID-19 on the brain: A systematic review. *J Nucl Med*. Published online February 17, 2022;jnumed.121.263085. doi:10.2967/jnumed.121.263085

54. Ismail II, Gad KA. Absent Blood Oxygen Level-Dependent Functional Magnetic Resonance Imaging Activation of the Orbitofrontal Cortex in a Patient with Persistent Cacosmia and Cacogeusia after COVID-19 Infection. *JAMA Neurol*. 2021;78(5):609-610. doi:10.1001/jamaneurol.2021.0009

55. Karimi-Galougahi M, Yousefi-Koma A, Bakhshayeshkaram M, Raad N, Haseli S. 18FDG PET/CT Scan Reveals Hypoactive Orbitofrontal Cortex in Anosmia of COVID-19. *Acad Radiol*. 2020;27(7):1042-1043. doi:10.1016/j.acra.2020.04.030

56. Hua J, Liu P, Kim T, et al. MRI techniques to measure arterial and venous cerebral blood volume. *Neuroimage*. 2019;187:17-31. doi:10.1016/j.neuroimage.2018.02.027
57. Draganski B, Kherif F, Klöppel S, et al. Evidence for segregated and integrative connectivity patterns in the human basal ganglia. *J Neurosci*. 2008;28(28):7143-7152. doi:10.1523/JNEUROSCI.1486-08.2008
58. Fettes P, Schulze L, Downar J. Cortico-striatal-thalamic loop circuits of the orbitofrontal cortex: Promising therapeutic targets in psychiatric illness. *Front Syst Neurosci*. 2017;11. doi:10.3389/fnsys.2017.00025
59. Maia T V., Frank MJ. From reinforcement learning models to psychiatric and neurological disorders. In: *Nature Neuroscience*. Vol 14. NIH Public Access; 2011:154-162. doi:10.1038/nm.2723
60. Gottfried JA, Zald DH. On the scent of human olfactory orbitofrontal cortex: Meta-analysis and comparison to non-human primates. *Brain Res Rev*. 2005;50(2):287-304. doi:10.1016/j.brainresrev.2005.08.004
61. Wolter N, Jassat W, Walaza S, et al. Early assessment of the clinical severity of the SARS-CoV-2 omicron variant in South Africa: a data linkage study. *Lancet*. 2022;399(10323):437-446. doi:10.1016/S0140-6736(22)00017-4
62. Halfmann PJ, Iida S, Iwatsuki-Horimoto K, et al. SARS-CoV-2 Omicron virus causes attenuated disease in mice and hamsters. *Nature*. 2022;603(7902). doi:10.1038/s41586-022-04441-6
63. Bornstein SR, Voit-Bak K, Donate T, et al. Chronic post-COVID-19 syndrome and chronic fatigue syndrome: Is there a role for extracorporeal apheresis? *Mol Psychiatry*. 2022;27(1):34-37. doi:10.1038/s41380-021-01148-4

64. Shungu DC, Weiduschat N, Murrough JW, et al. Increased ventricular lactate in chronic fatigue syndrome. III. Relationships to cortical glutathione and clinical symptoms implicate oxidative stress in disorder pathophysiology. *NMR Biomed.* 2012;25(9):1073-1087. doi:10.1002/nbm.2772
65. Biswal B, Kunwar P, Natelson BH. Cerebral blood flow is reduced in chronic fatigue syndrome as assessed by arterial spin labeling. *J Neurol Sci.* 2011;301(1-2):9-11. doi:10.1016/j.jns.2010.11.018

6. Figure legends

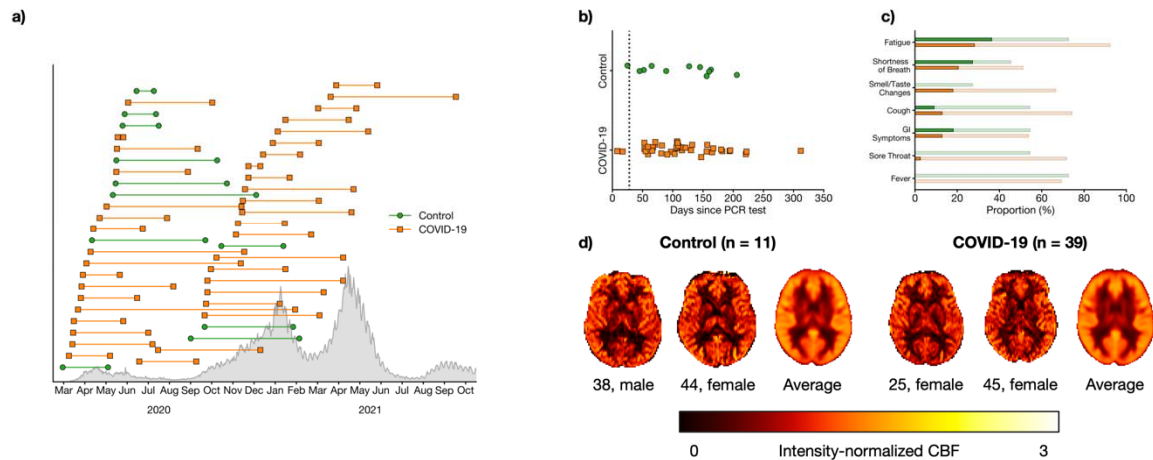


Figure 1. a) Timing of PCR test (left marker) and assessment (right marker) for COVID-19 (orange squares) participants and controls (green circle). Confirmed cases in Ontario are shown in grey. b) Number of days between PCR test and assessment. The black dotted line indicates 28 days, an established threshold beyond which symptoms can be considered part of the post-COVID-19 condition. c) Proportion of participants who self-reported flu-like symptoms. Faint bars indicate participants whose symptoms had resolved by the time of the assessment while dark bars indicate participants with on-going symptoms. d) Representative and group-averaged CBF maps from both groups.

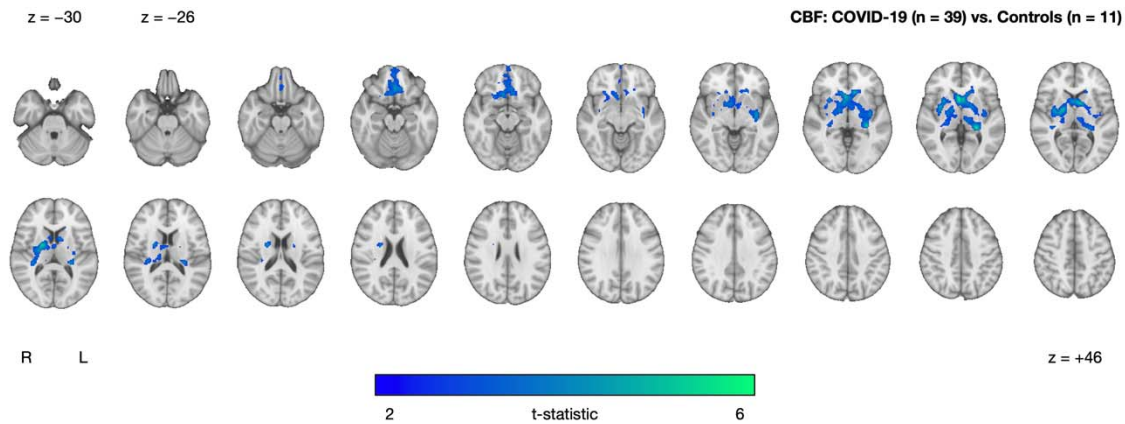


Figure 2. Cluster exhibiting significantly decreased CBF in the COVID-19 group (n = 39) relative to controls (n = 11), after controlling for age and sex. No clusters were found where the COVID-19 group had higher CBF compared to controls. Statistical maps are presented in radiological convention. Montreal Neurological Institute coordinates are denoted by z-values. Abbreviations: R, right; L, left.

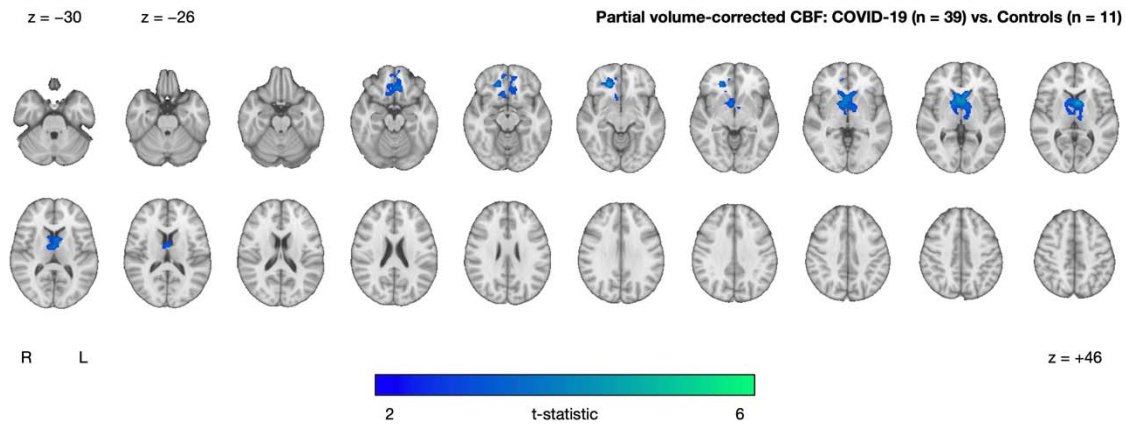


Figure 3. Cluster exhibiting significantly decreased partial volume-corrected CBF in the COVID-19 group (n = 39) relative to controls (n = 11), after adjusting for age and sex. No clusters were found where the COVID-19 group had higher CBF compared to controls. Statistical maps are presented in radiological convention. Montreal Neurological Institute coordinates are denoted by z-values. Abbreviations: R, right; L, left.

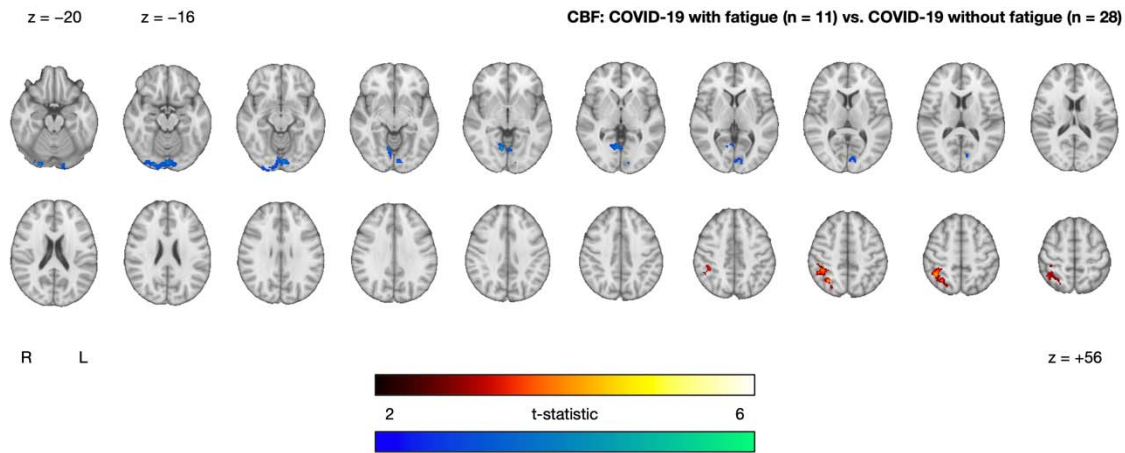


Figure 4. Clusters exhibiting significantly increased (red-yellow) and decreased (blue-green) CBF in the COVID-19 with fatigue group (n = 11) relative to the COVID-19 without fatigue group (n = 28), after controlling for age and sex. Statistical maps are presented in radiological convention. Montreal Neurological Institute coordinates are denoted by z-values. Abbreviations: R, right; L, left.

588 7. Tables

	Controls (n = 11)	COVID-19 (n = 39)	Test Statistic	P
Age (years)	41.5 ± 13.4 [26, 70]	41.9 ± 12.6 [19, 63]	t = 0.10	0.92
Female	6 (54.5%)	27 (69.2%)	X ² = 0.82	0.36
Caucasian	7 (63.6%)	29 (74.4%)	X ² = 0.49	0.48
Education (years)	17.0 ± 2.8 [12, 22]	16.0 ± 2.0 [12, 20]	U = 253.0	0.35
Days between PCR test and time of assessment	112.1 ± 59.5 [25, 206]	116.5 ± 62.2 [8, 312]	t = 0.21	0.84
Received first dose of vaccine prior to time of assessment (yes / no / did not answer)	0 / 3 (27.3%) / 8 (72.7%)	2 (5.1%) / 23 (59.0%) / 14 (35.9%)	X ² = 4.87	0.12
Days between receiving first dose of vaccine and time of assessment	–	[5, 6]	–	–
Self-reported symptoms at time of assessment (current / resolved / did not experience)				
Fatigue	4 (36.4%) / 4 (36.4%) / 3 (27.3%)	11 (28.2%) / 25 (64.1%) / 3 (7.7%)	X ² = 4.07	0.11
Shortness of Breath	3 (27.3%) / 2 (18.2%) / 6 (54.5%)	8 (20.5%) / 12 (30.8%) / 19 (48.7%)	X ² = 0.72	0.74
Smell/Taste Changes	0 / 3 (27.3%) / 8 (72.7%)	7 (17.9%) / 19 (48.7%) / 13 (33.3%)	X ² = 6.04	0.05 *
Cough	1 (9.0%) / 5 (45.5%) / 5 (45.5%)	5 (12.8%) / 24 (61.5%) / 10 (25.6%)	X ² = 1.61	0.49
Gastrointestinal Symptoms	2 (18.2%) / 4 (36.4%) / 5 (45.5%)	5 (12.8%) / 16 (41.0%) / 18 (46.2%)	X ² = 0.22	0.90
Sore Throat	0 / 6 (54.5%) / 5 (45.5%)	1 (2.6%) / 27 (69.2%) / 11 (28.2%)	X ² = 1.36	0.58
Fever	0 / 8 (72.7%) / 3 (27.3%)	0 / 27 (69.2%) / 12 (30.8%)	X ² = 0.05	–
NIH Toolbox Cognition Battery (age-corrected standard scores)				
Fluid Cognition	102.8 ± 15.2 [77, 120]	104.1 ± 16.5 [72, 142]	t = 0.22	0.82
Crystallized Cognition	107.5 ± 12.9 [83, 124]	100.2 ± 12.7 [67, 127]	t = 1.69	0.10
NIH Toolbox Emotion Battery (T-scores)				
Negative Affect	53.5 ± 10.9 [38, 71]	59.0 ± 8.5 [45, 78] {3}	t = 1.78	0.08
Social Satisfaction	44.2 ± 10.4 [23, 61]	46.6 ± 9.5 [27, 66] {3}	t = 0.71	0.48
Well-Being	45.9 ± 8.1 [35, 55]	44.7 ± 6.4 [32, 54] {3}	U = 229.0	0.44
UPSIT				
UPSIT Score	32.7 ± 5.3 [21, 38] {2}	33.4 ± 5.4 [17, 40] {11}	U = 95.0	0.28

Normosmia	5 (55.6%)	13 (46.4%)	$X^2 = 1.85$	0.64
Mild Microsmia	2 (22.2%)	11 (39.3%)		
Moderate Microsmia	1 (11.1%)	1 (3.6%)		
Severe Microsmia	1 (11.1%)	2 (7.1%)		
Total Anosmia	0	1 (3.6%)		

589

590 **Table 1. Demographic and clinical characteristics.** Data are presented as mean \pm standard
591 deviation [minimum, maximum], or count (%). Between-group comparisons were performed
592 using independent samples t-tests or Mann-Whitney U-tests for continuous data and chi-squared
593 tests or Fisher's exact tests for categorical data. Significant differences at $p < 0.05$ are indicated
594 by an asterisk. Numbers in braces indicate participants with missing/faulty data. Abbreviations:
595 PCR, polymerase chain reaction; NIH, National Institutes of Health; UPSIT, University of
596 Pennsylvania Smell Identification Test.

Comparison	Direction	Size	t-statistic	x	y	z	Description
COVID-19 (n = 39) vs. Controls (n = 11)	COVID-19 < Controls	4,431	5.94	4	14	2	Thalamus, Orbitofrontal Cortex, Caudate, Nucleus Accumbens, Putamen, Pallidum
<i>Sensitivity Analysis – Partial Volume Correction</i>							
COVID-19 (n = 39) vs. Controls (n = 11) with partial volume correction	COVID-19 < Controls	2,251	4.83	-4	8	6	Thalamus, Orbitofrontal Cortex, Caudate, Nucleus Accumbens, Putamen, Pallidum
<i>Exploratory Analysis – Effects of Fatigue on CBF within the COVID-19 group</i>							
COVID-19 with fatigue (n = 11) vs. COVID-19 without fatigue (n = 28)	COVID-19 with fatigue > COVID-19 without fatigue	464	4.40	32	-60	50	Superior Lateral Occipital Cortex, Angular Gyrus, Superior Parietal Lobule, Supramarginal Gyrus
	COVID-19 with fatigue < COVID-19 without fatigue	758	4.75	10	-66	-4	Lingual Gyrus, Occipital Fusiform Gyrus, Intracalcarine Cortex, Precuneous Cortex

Table 2. Summary of voxel-wise analyses of CBF. The primary (top row) and secondary analyses (bottom rows) show results of the two-tailed independent samples t-tests that were used to test for between-(sub)group differences, controlling for age and sex. Coordinates indicate location of peak t-statistic.