

**1 The impact of antenatal balanced plate nutrition education for pregnant women on**  
**2 birth weight: a cluster randomised controlled trial in rural Bangladesh**

**3 Authors:**

**4** Morseda Chowdhury<sup>1, 2</sup>, Camille Raynes-Greenow<sup>2</sup>, Patrick J. Kelly<sup>2</sup>, Ashraful Alam<sup>2</sup>,  
**5** Kaosar Afsana<sup>3</sup>, Sk Masum Billah<sup>2, 4</sup>, Michael J. Dibley<sup>2</sup>

**6 Affiliations:**

**7** <sup>1</sup> Health Nutrition and Population Programme, BRAC, BRAC Centre, 75 Mohakhali, Dhaka  
**8** 1212, Bangladesh

**9** <sup>2</sup> The University of Sydney, Faculty of Medicine and Health, Sydney School of Public Health,  
**10** Camperdown, New South Wales 2006, Australia

**11** <sup>3</sup> James P Grant School of Public Health, (JPGSPH), BRAC University, Dhaka, Bangladesh

**12** <sup>4</sup> Maternal and Child Health Division, International Centre for Diarrhoeal Disease Research,  
**13** Bangladesh (icddr,b), Dhaka 1212, Bangladesh

**14 Corresponding author:** Michael J Dibley, Room 328 Edward Ford Building (A27) Sydney  
**15** School of Public Health, the University of Sydney, NSW 2006, Australia.

**16** Phone: +61 2 9351 520 Email: michael.dibley@sydney.edu.au

**17 Short running head:** Balanced plate nutrition education & birth weight

**18 Keywords:** Low birth weight, maternal nutrition education, food demonstrations, dietary  
**19** diversity, cluster RCT, Bangladesh

**20 Trial registration:** The Australian New Zealand Clinical Trials Registry number  
**21** ACTRN12616000080426

**22**

## 23    **Abstract**

24    Low birth weight (LBW) is a global public health problem with the highest prevalence in  
25    South Asia. It is strongly associated with maternal undernutrition. In South Asia, intra-  
26    household food distribution is inequitable, with lower dietary adequacy in women. Evidence  
27    that nutrition education improves diet during pregnancy and reduces LBW is weak. We  
28    assessed the impact of nutrition education for pregnant women on birth weight in rural  
29    Bangladesh. We conducted a parallel, two-arm, cluster-randomised controlled trial, with 36  
30    clusters allocated equally to intervention (n=445) or standard care (n=448). From their first  
31    trimester until delivery, intervention participants received education about eating balanced  
32    meals to meet daily dietary requirements with diverse food groups. The primary outcome of  
33    mean birth weight was 127.5 g higher in the intervention compared to control women, and  
34    the intervention reduced the risk of LBW by 57%. Post hoc analyses showed a significantly  
35    higher birth weight and a greater reduction in LBW amongst adolescent mothers. The mean  
36    number of food groups consumed was significantly higher in the intervention from the third  
37    month of pregnancy than in the control. A community-based balanced plate nutrition  
38    education intervention effectively increased mean birth weight and reduced LBW, and  
39    improved dietary diversity in rural Bangladeshi women.

40    **Keywords:** Low birth weight, maternal diet, dietary diversity, antenatal, nutrition education

41

## 42 Introduction

43 Birth weight is a powerful predictor of infant survival.<sup>1</sup> Low birth weight, defined as less than  
 44 2500 grams (g), is a composite measure of restricted fetal growth and short duration of  
 45 gestation, major determinants of infant mortality, childhood growth and development, and  
 46 adulthood well-being.<sup>1,2</sup> The lower the birth weight, the higher the risk of mortality.<sup>3,4</sup>  
 47 Globally, in 2010, there were an estimated 18 million LBW babies, of whom 59% were term  
 48 but small for gestational age, and 41% were preterm.<sup>5</sup> An estimated 606,500 neonatal deaths  
 49 occur annually in low and middle-income countries due to small for gestational age, which  
 50 accounts for 22% of neonatal deaths.<sup>6</sup> South Asia has the highest prevalence of LBW  
 51 globally (34%).<sup>6</sup> Bangladesh is ranked fourth in the global burden of LBW.<sup>5</sup>  
 52 LBW is strongly associated with maternal under-nutrition<sup>7</sup>, which induces suboptimal  
 53 placental growth, influencing nutrient delivery, altering fetal hormones, and contributing to  
 54 restricted development.<sup>8</sup> A World Health Organization study with 111,000 women reported  
 55 that mothers in the lowest quartile of pre-pregnancy weight carried an elevated risk of IUGR  
 56 of 2.55 (95% confidence interval (CI): 2.3, 2.7) and LBW of 2.38 (95% CI: 2.1, 2.5)  
 57 compared to the upper quartile.<sup>9</sup> In India, the odds ratio for LBW was three times greater in  
 58 severe energy-deficient low BMI groups than in normal BMI.<sup>10</sup> Consistent with the  
 59 mechanisms and epidemiological evidence is the high prevalence of LBW in rural  
 60 Bangladeshi women who have a chronic shortfall of food energy throughout pregnancy.<sup>11</sup> In  
 61 South Asia, intra-household food distribution is inequitable with lower energy share, animal  
 62 source food, and dietary adequacy in women, regardless of pregnancy.<sup>12</sup>  
 63 There is little data on nutrition education's effects on birth weight in low or middle-income  
 64 countries, although four meta-analyses have assessed impacts. The first, in 1993, found that  
 65 nutrition education significantly increased the consumption of protein and vitamins and the

66 birth weight of infants by 300 g. However, the studies lacked statistical power or did not  
 67 report effect size estimates.<sup>13</sup> The second meta-analysis in 2012 found a 105 g (95% CI: 18,  
 68 193 g) increase in mean birth weight with nutrition education and counselling in pregnancy.  
 69 When stratified by the study site, the effect failed to reach significance in low and middle-  
 70 income countries (152 g; 95% CI: -81, 384 g).<sup>14</sup> The third meta-analysis in 2014 reported that  
 71 dietary counselling significantly increased birth weight in three studies (149 g; p=0.039), but  
 72 two had a small sample size, and another had methodological limitations.<sup>15</sup> The fourth, a  
 73 Cochrane review,<sup>16</sup> identified two small trials that reported significantly higher birth weight  
 74 in the intervention group (mean difference 489.8 g, 95% CI: 427.9, 551.6 g). There are no  
 75 reports of trials of antenatal nutrition education in rural Bangladesh.

76 Thus, the evidence for nutrition education to improve diet and maternal and neonatal health  
 77 indicators, including birth weight, remains weak. Most evidence comes from trials with  
 78 design or analysis limitations<sup>14</sup> and high-income countries where counselling is by  
 79 professional dietitians or nutritionists.<sup>15</sup> There is a critical knowledge gap about antenatal  
 80 nutrition education's efficacy and potential to reduce LBW in South Asia, including  
 81 Bangladesh. Filling this gap can potentially contribute to the World Health Assembly's global  
 82 goal of a 30% reduction in the LBW rate by 2025.<sup>17</sup> Therefore, we investigated the impact of  
 83 antenatal nutrition education with demonstrations of a nutritionally energy-protein balanced  
 84 diet on infants' birth weight in a low-income population.

## 85 **Subjects and Methods**

### 86 **Study design and participants**

87 We conducted a two-arm, parallel, cluster randomised controlled trial (cRCT). The James P.  
 88 Grant School of Public Health; the BRAC University Ethical Review Committee, Dhaka,  
 89 Bangladesh, approved the study protocol (No 53, 25<sup>th</sup> May 2015).

90 We have described the study design.<sup>18</sup> In brief, the study was in the rural district of Sherpur,  
 91 which has a low human development index, a high percentage in the lowest economic  
 92 quintile (37.1%) compared to the national average (21.7%)<sup>19</sup> and 48% below the poverty  
 93 line.<sup>20</sup> The Food Security Atlas of Bangladesh classifies Sherpur as having a high/very high  
 94 household food insecurity level.<sup>21</sup> In 2016 in Sherpur the neonatal mortality (41/1000 live  
 95 births) and under-five mortality (59/1000 live births) were higher than the national average  
 96 (30 and 47/1000 respectively).<sup>22</sup>

97 Sherpur has five sub-districts: Jhenaigati (population 160,452), Nakla (189,685), Nalitabari  
 98 (251,361), Sherpur Sadar (497,179) and Sreebardi (259,648). Pregnant women, self-reporting  
 99 to a hospital or formal practitioner (doctor, nurse, or Family Welfare Visitor), receive  
 100 nutrition education as part of antenatal care (ANC). BRAC (a national NGO; formerly known  
 101 as Bangladesh Rural Advancement Committee) implements a community-based Maternal,  
 102 Neonatal, and Child Health (MNCH) program characterised by prospective pregnancy  
 103 surveillance and basic ANC led by community health workers (CHW) known as *Shasthya*  
 104 *Kormi*. One *Shasthya Kormi* serves an area of ~10,000 people, along with ten health  
 105 volunteers (*Shasthya Shebika*). The *Shasthya Kormi* are village women who have basic 10-  
 106 years schooling and have received training on health, nutrition, and sanitation issues for six  
 107 weeks, followed by bi-monthly refreshers.

108 In our study, a cluster was the catchment area of one *Shasthya Kormi*, which provided  
 109 logistical convenience and minimised intervention spills into the control group. *Shasthya*  
 110 *Kormi*, with at least six months of experience in MNCH, were eligible. Participants were  
 111 pregnant women 15-49 years, gestation 12 weeks or less, permanently residing in the area,  
 112 and not expecting to move from the usual residence until birth. We used the established  
 113 BRAC pregnancy detection system for monthly menstrual surveillance to identify new  
 114 pregnancies. Women with delayed menstruation for six weeks or more underwent a urine test.

We excluded pregnant women with self-reported chronic disease. All women excluded from the study continued to receive standard care and counselling as in the control clusters. A *Shasthya Kormi* visited each confirmed pregnant woman, screened for eligibility, and obtained verbal informed consent. Recruitment took place from 1st October- 31st December 2016.

## **Randomisation and masking**

We used proportionate stratified sampling to randomly select 36 of 135 *Shasthya Kormi* clusters (4, 5, 7, 13, and 7 from the five sub-districts). The clusters were dispersed across the sub-districts and sufficiently separated to minimise the risk of contamination. We selected 36 as the maximum number of *Shasthya Kormi*, whom a single BRAC supervisor could oversee, and we randomised with 1:1 allocation. All eligible pregnant women served by one *Shasthya Kormi* received the intervention or standard care per the random assignment.

We could not mask families or the research team to group allocation; however, we blinded researchers assessing primary and secondary outcomes to the study hypotheses. We also used an objective outcome (birth weight) less prone to ascertainment bias.

## **Procedures**

Intervention *Shasthya Kormi* received two days of nutrition training, including a balanced diet and counselling techniques. They also practised community counselling skills under supervision and received one-day training on taking consent and data collection. Enrolled participants were visited monthly to provide ANC that included standard nutrition advice. In intervention clusters, balanced plate intervention replaced the standard nutrition advice using a culturally appropriate diet for Bangladeshi pregnant women.<sup>23</sup> This contained seven-food groups (cereal, lentils, animal protein, vegetables, fruits, milk, and oil), giving a daily 2500 kcal energy and essential micro and macronutrients. The balanced plate was a combination of

foods in appropriate portion sizes to meet requirements. Before the trial, we conducted focus groups to identify locally preferred foods and dietary restrictions. We pilot-tested the menu to assess community acceptability and the feasibility of incorporating it into ANC services. We delivered the intervention individually. Initially, participants received information on a balanced diet and the maternal and fetal health benefits. Then, they learned to prepare a "balanced plate" by demonstrating the right proportions of food groups using the prescribed menu.<sup>18</sup> The community health worker displayed different food combinations on the plate with appropriate alternatives, such as replacing meat (an expensive protein source) with cheaper eggs or farm fish. We emphasised foods commonly missed in the regular diet, such as milk, fruits, and coloured vegetables. Women were encouraged to increase their frequency of food intake to three meals and two snacks per day. We used a bowl of 250 ml, commonly found in most homes, to demonstrate measurements. The community health worker invited family decision-makers to observe the demonstration and assist in making a balanced plate. Delivering the intervention took 45 minutes: 10 for individual counselling, 10 for household counselling, and 25 for demonstration. To help recall messages, we provided a pictorial food chart and a written menu<sup>18</sup>. The community health worker delivered eight nutrition messages during the first visit with a practical demonstration. In subsequent visits, they emphasised messages that were less familiar or difficult to remember. They excluded easily recalled messages in the counselling, such as drinking eight glasses of water or cooking with oil. They also dropped the messages if it was clear the women practised the behaviour. As the number of messages decreased, the community health worker reduced the visit time to 25 minutes. The mean number of intervention visits was 3.4. Home visits continued until birth or the end of the pregnancy; ANC from other sources was not discouraged. Husbands were encouraged to reallocate family budgets to purchase

nutritious food and mothers-in-law to re-distribute family food to increase their daughter-in-law's share.

In the control group, pregnant women received the same frequency of home and standard nutrition advice except for the balanced plate demonstrations. Standard advice recommended consuming all food groups and taking iron-folic acid and calcium supplements.

*Shasthya Kormi* collected demographic, socio-economic, and reproductive data at enrolment plus birth weight measurements within 72 hours of birth. Families immediately notified birth or pregnancy loss (miscarriage, abortion, and stillbirth) to their nearby *Shasthya Shebika*.

One field supervisor oversaw the 36 *Shasthya Kormi*, recorded field activities, and conducted follow-up interviews with 5% of participants to confirm visits and measure protocol adherence.

## Outcomes

Primary outcomes were the mean birth weight of live-born infants and the proportion of newborns with a birth weight less than 2500 g. The *Shasthya Kormi* had many years of experience measuring birth weight, but we retrained them with their standard equipment, a 5 kg Salter spring balance scale with an accuracy of 100 g. They calibrated the scales with a standard weight every week. We also checked the scales monthly during refresher training. For mothers birthed in health facilities, we recorded the birth weight measured at the facility.

The *Shasthya Kormi* used structured forms to record fetal loss during pregnancy, birth outcome, delivery information, and neonatal or maternal death for secondary outcomes. They also used monthly semi-structured questionnaires to collect dietary data, with the food list adapted from Food and Nutrition Technical Assistance II Project (FANTA-2).<sup>24</sup> These questionnaires captured information about foods, beverages, and supplements consumed 24 hours before the interview. From this data, we formed seven food groups as follows: (1)



grains, white roots and tubers; (2) pulses (beans, peas and lentils), nuts and seeds; (3) dairy; (4) meat, poultry and fish; (5) eggs; (6) Vitamin A-rich fruits and vegetables; (7) other fruit and vegetables. We calculated the mean number of food groups consumed to assess diet quality<sup>25</sup> and compared the mean number of food groups between the treatment groups and the relative differences for each food group. We defined animal source protein as consuming any combination of dairy, meat, poultry, fish or egg food groups.

### **Statistical analysis**

We required 720 pregnant women to achieve 80% power to detect a difference of 100 g in birth weight between groups. We assumed a mean birth weight of 2531 g (standard deviation (SD) 415 g) in the control group based on the findings from a similar trial in Bangladesh.<sup>26</sup> We set a significance level of 0.05 (two-sided) and assumed an intra-cluster correlation coefficient (ICC) of 0.03<sup>27</sup> and 36 clusters with an average of 10-15 live births per cluster per month. To adjust for 10% pregnancy loss and 15% loss to follow-up based on similar trials,<sup>26,28</sup> we inflated the required sample size to 900 pregnant women.

We analysed the data with Stata version 17 and conducted intention-to-treat analyses. We assigned the intervention randomly at the cluster level but assessed outcomes at the individual level. We estimated the mean between-group difference in birth weight using linear regression and the relative risk for LBW using binomial regression. We included the study group as a covariate and adjusted for cluster randomisation using Generalised Estimating Equations (GEE).<sup>29</sup> We estimated the intervention effect on maternal dietary diversity and consuming individual food groups in the last 24 hours by multilevel linear and Poisson mixed models, respectively. The linear mixed model estimated the difference in the mean number of food groups consumed (out of 7), and the Poisson model estimated the relative risk of consuming individual food groups between intervention and control arms. In each model, we included study arms (intervention =1 and control =0) and gestational months

(2-9) as fixed effects with an interaction term between them. We also included two random effect variables for adjusting the cluster RCT design and the repeated measurements at 2-9 gestational months. After each model, we used the post-estimation *lincom* command to estimate the intervention effect at each gestational month.

We conducted post hoc subgroup analyses for the modifying effects of age, education, family income, and place of delivery on the primary outcome, low birth weight. We added an interaction term to assess whether there was a difference in intervention effect for any subgroup, using a significance level of 0.01.

### **Role of the funding source**

The funders had no role in study design, participant selection, data collection, and analyses. The corresponding author had full access to the study's data and final responsibility for the decision to publish.

### **Results**

We identified 2,154 newly pregnant women from August 2015 to February 2016 in the selected clusters. Of these women, 937 did not meet the eligibility criteria (603 had a gestation of >12 weeks, 147 were not permanent residents, and 187 had planned to move out of the study area for childbirth), and 324 declined to participate. We recruited 893 participants, 445 in 18 intervention clusters and 448 in 18 control clusters, and we lost 44 participants during follow-up, 25 (5.6%) intervention, and 19 (4.2%) control. Birth weight was missing for 22 participants (Figure 1). There were 42 pregnancy losses (abortion or stillbirth) and six neonatal deaths within 24 hours of birth.

There were no important differences in baseline characteristics between the groups (Table 1). There were small differences in the mother's age, mother's and father's education, and parity but not enough to warrant an adjustment in analyses. Slightly more intervention participants

received four or more ANC visits, but this trend reversed for antenatal care from health centres (Table 1). When we combined both ANC data sources, the intervention participants received slightly more ANC (intervention 61.7% vs. control 55.6%). A somewhat higher percentage of intervention participants delivered in a facility (20.7% vs. 16.6%), but this variable reflects the small differences in ANC. Mean birth weight was higher in facility deliveries (2,915 g, SD 560 g) than in-home births (2,769 g, SD: 410 g).

Supervisors attended 5% of balanced plate demonstrations to observe the appropriateness of message delivery, the use of the menu and food chart, demonstration, problem-solving, and counselling. Approximately 6-7 of 8 messages were delivered to 80% of the participants. The time taken for the demonstrations gradually decreased with increasing numbers of visits. Counselling family members largely depended on availability; husbands were present at 15-20% of visits, and other family members at >80% of visits.

We found a statistically significant difference in mean birth weight and LBW (Tables 2 and 3). The mean difference in birth weight between groups was 127.5 g (95% CI: 11.1, 243.9;  $p=0.032$ ) adjusted for clustering. The estimated relative risk (RR) of LBW was 57% lower in the intervention group (RR: 0.43; 95% CI: 0.25, 0.75;  $p=0.003$ ) adjusted for clustering.

We conducted subgroup analyses of the mother's age, education, and family income (Tables 2 and 3) and found a significant intervention effect on birth weight in adolescents vs. non-adolescents. Mean difference in birth weight between groups was greater in adolescents (299.1 g; 95% CI: 101.6, 496.6;  $p=0.003$ ; vs 95.6 g; 95% CI: -17.3, 208.4;  $p=0.097$ ) (p-value for interaction 0.009) as was reduction in LBW (RR: 0.28; 95% CI: 0.11, 0.71;  $p=0.007$  vs RR: 0.54; 95% CI: 0.29, 0.98;  $p=0.044$ ), although this was not statistically significant (p-value for interaction 0.22). There was no evidence of treatment modification by the mother's education or family income (Tables 2 and 3).

To assess bias in ascertaining birth weight, we stratified by participants birthed in a facility whose babies were weighed by independent observers and those birthed at home and found no evidence of treatment modification ( $p=0.78$ ).

After adjustment for ANC, using iron and folic acid, and clustering, the reduction in mean birth weight and LBW was smaller in the intervention group (Supplemental Tables S1 and S2). The adjusted difference was 121.8 g (95% CI: 11.7, 231.9;  $p=0.030$ ), which is 5.7 g less than the unadjusted analysis (Table 2). The adjusted relative risk of LBW was 0.53 (95% CI: 0.29, 0.98;  $p=0.042$ ), which was smaller than the unadjusted relative risk in Table 3.

The mean number of food groups consumed increased in the intervention group and was significantly higher from the third month of pregnancy (Table 4, Fig 2). The largest difference was in the eighth month of pregnancy (Table 4, Fig 2). The mean number of animal-source protein foods consumed was significantly higher from the fourth month of pregnancy. At the fourth gestational month the intervention participants consumed 1.5 animal source foods / day (95% CI: 1.38, 1.64) compared to 1.1 (95% CI: 1.02, 1.25) in control participants. The largest difference was in the eighth gestational month when intervention participants consumed 1.9 animal source foods/day (95% CI: 1.68, 2.15) compared to 1.1 (95% CI: 1.02, 1.24) in control participants.

The relative consumption rate of beans, legumes and nuts, dairy food and other fruits and vegetables was significantly higher in the intervention than in the comparison group after the third or fourth gestational month (Table 4). The largest relative increases were for eggs, dairy foods and other fruits and vegetables after the fourth or fifth gestational month (Table 4).

## Discussion

We demonstrated that antenatal nutrition education with practical demonstrations of preparing a balanced diet increases infant birth weight and reduces LBW in rural Bangladesh.

After adjustment for ANC, using iron and folic acid, and clustering, there was a higher mean birth weight in the intervention group of public health significance (121.8 g) than in the control group. The effect of the intervention was greater in adolescent mothers. The findings provide strong evidence of the effectiveness of a sustainable intervention suitable for implementation in community-based health care systems. They demonstrate the potential impact of nutrition education to improve intrahousehold food distribution as a tool to reduce low birth weight in Bangladesh and across South Asia.

The process evaluation of the trial<sup>30</sup> provided insights into why the intervention was so impactful. It identified key elements in the intervention strategy that was crucial in achieving the desired adherence. These include the practical demonstration of portion sizes, addressing local food perceptions, demystifying animal-source foods, engaging husbands and mothers-in-law, leveraging women's social networks, and harnessing community health workers' social roles. In particular, involving the mothers-in-law and husbands changed their attitudes towards a fairer allocation of foods to pregnant women. The husbands adhered to the messages and purchased more nutritious foods for their wives by adjusting the shopping budget and even working extra hours.

### **Comparison with other studies**

Our intervention appears more effective than interventions using micronutrients or food supplements. A large cluster RCT (22,405 pregnancies) in Bangladesh assessed the impact of antenatal micronutrient supplementation and found a 54 g (95% CI: 41, 66) increase in birth weight and a 12% reduction (RR: 0.88; 95% CI: 0.85, 0.91) in LBW.<sup>26</sup> Another cluster RCT of lipid-based micronutrient supplementation showed a 41 g birth weight increment without a significant effect on LBW.<sup>28</sup>

Providing micronutrient supplements, even with additional food energy, is unlikely to address the fundamental problems of insufficient food intake in pregnancy related to food taboos and inequitable intra-household food distribution. The earlier MINIMat RCT (3267 singleton newborns)<sup>31</sup>, which tested early and late starts to food supplements with micronutrients in pregnancy, found no significant main effects on birth weight. However, combining multiple micronutrients and early food supplementation improved infant survival. The lack of a control group without food supplements might explain the lack of birth weight response. In contrast, an observational study in Bangladesh reported a 118 g increase in birth weight with daily 608 kcal food supplements combined with iron-folic acid sustained for more than four months.<sup>32</sup> Although this evidence is weak, it supports using food-based solutions to address nutrition problems.

Adolescent pregnancy has an increased risk of adverse birth outcomes, including LBW.<sup>33</sup> If severely undernourished, the growing pregnant adolescent and foetus compete for nutrients.<sup>34</sup> A recent study from rural Bangladesh found a cessation of linear growth, weight loss, and fat and lean body mass depletion in pregnant adolescents.<sup>34</sup> This greater nutritional susceptibility helps explain the larger effect of balanced plate education in this group.

The balanced-plate intervention significantly increased maternal dietary diversity (Table 4, Fig 2). Change in dietary patterns is the likely cause of the higher birth weight in the intervention group. A recent cohort study<sup>35</sup> followed 374 women from their first antenatal care visit to assess associations between dietary diversity during pregnancy and LBW in rural Ethiopia. The LBW risk doubled with a dietary diversity score of less than four food groups (ARR: 2.06; 95% CI: 1.03, 4.11). A facility-based case-control study<sup>36</sup> from rural Ethiopia, which examined iron, folic acid and nutrition counselling, snack consumption, dietary diversity, and maternal undernutrition, also reported similar findings.

There was a significant six-fold increase in the adjusted odds of LBW with an inadequate minimum dietary diversity score (AOR: 6.65; 95% CI, 2.31, 19.16). A cross-sectional study<sup>37</sup> from Ghana also reported a protective effect of higher dietary diversity scores for LBW (AOR: 0.10; 95% CI: 0.04, 0.13 per standard deviation change score,  $p < 0.0001$ ). This evidence supports our findings that improved and more diverse dietary intake leads to a reduction in LBW.

Participants in the intervention group consumed more animal-sourced protein foods, reaching a peak at eight months of gestation of approximately two animal-sourced foods/day. A large cross-sectional study of pregnant women in Shaanxi province, northwestern China, reported an average weekly consumption of five animal-sourced foods.<sup>38</sup> As the frequency of animal-sourced food increased by one time/week, the average birth weight increased by 3.24 g (95% CI: 1.09, 5.39). Unlike increasing animal-sourced foods in the diet, consuming excess protein supplements (>20% of energy as protein) can harm fetal growth.<sup>39</sup>

Despite earlier evidence of the positive impact of nutrition education on pregnancy outcomes, the delivery method has received little attention. It is particularly important in low-literate and poor self-efficacy populations, such as rural Bangladesh, where women require dietary counselling to be accessible, feasible, and sanctioned by the community. A review of over 300 studies found that nutrition education is more likely to be effective when focusing on behaviour and action than knowledge alone. And it is also likely to be more effective if grounded in theory.<sup>40</sup> Fishbein and Yzer note that "any given behaviour is most likely to occur; if one has a strong intention to perform the behaviour; if a person has the necessary skills and abilities required to perform the behaviour; and if no environmental constraints are preventing the behavioural performance."<sup>41</sup> To positively impact dietary behaviour, we designed our intervention to embrace all aspects of this theory. We adopted an innovative counselling technique, including a practical demonstration of a balanced diet and engaged

family decision-makers. Similar nutrition counselling intervention was found effective in increasing age-specific complementary feeding practices in rural Bangladesh.<sup>42</sup>

In Bangladesh, the main source of nutrition education for pregnant women is through ANC, but the contact time is insufficient to affect nutrition change.<sup>43</sup> Thus, WHO. Proposes that upskilling CHWs in delivering dietary advice is an appropriate approach to complement health services.<sup>44</sup> In our study, we integrated the balanced plate intervention into BRAC's existing ANC package delivered by CHWs. The same staff in a recent intervention demonstrated their successful counselling on breastfeeding and complementary feeding.<sup>45</sup> Previously, we also found that CHWs can influence family decision-makers to increase pregnant women's iron-folic acid consumption.<sup>46</sup>

### **Strengths and limitations of this study**

The evidence presented from this trial is robust. Key strengths are the cluster, randomised controlled trial design with sufficient statistical power to detect clinically important changes in outcomes. The delivery of the trial treatments through an established home-based antenatal care service led to a balance between the treatment groups in the level of antenatal contact with community health workers. The unblinded intervention was counterbalanced by objective outcomes and blinding participants and data collectors to the aims and hypotheses. The trial had a very high follow-up (93%), and we used intention-to-treat analyses and adjusted for unbalanced baseline factors and clustering. Our intervention was logistically simple and culturally appropriate based on well-designed qualitative formative research. The key to our success was conducting the trial within existing ANC frameworks. The delivery strategy resonates with maternal and child nutrition recommendations to achieve adequate coverage of nutrition-specific interventions by reaching needy populations.<sup>47</sup> However, we acknowledge some limitations. First, *Shasthya Kormi*, who delivered the intervention, collected birth weight data. Measuring birth weight and providing nutrition counselling are



routine tasks for these staff. By blinding the SK to the study outcome, we would expect non-differential bias. Also, we found no difference in the effects between women who had birth weight measured by hospital staff versus those who were birthed at home with birth weight measured by the SK. Secondly, using catchment areas as clusters might introduce contamination, with the possibility of *Shasthya Kormi* exchanging information. However, this would have biased results towards a null effect. To prevent this, we trained intervention and control group *Shasthya Kormi* separately at regular refresher sessions. Thirdly, we could not quantify food intake and intra-household food distribution, which might have provided further evidence of pathways to the observed impact. Finally, we excluded over 30% of pregnant women who identified because they were already in the second or third trimester when we detected their pregnancy. There is no information about the characteristics of these excluded women, and thus no way to compare them to those included in the trial. This lack of data limits our assessments of the external validity of the trial findings.

### **Conclusions and policy implications**

Our results indicate that a balanced plate nutrition education during pregnancy increases birth weight and reduces LBW. Our trial offers a pragmatic food-based strategy for resource-poor environments, especially where there is gender-biased intrahousehold food allocation. The CHW-led intervention is simple, feasible, and easy to implement in settings with an existing community nutrition outreach program. The intervention can potentially be adapted in Bangladesh for implementation through the existing community health infrastructure.

## 402 References

- 403 1. Black RE, Allen LH, Bhutta ZA, et al. Maternal and child undernutrition: global and  
404 regional exposures and health consequences. *Lancet*. 2008;371:243-260.
- 405 2. Cesar G Victora, Linda Adair, Caroline Fall, et al. Maternal and child undernutrition:  
406 consequences for adult health and human capital. *Lancet*. 2008;371:340-357.
- 407 3. Wilcox AJ, Russell IT. Birthweight and Perinatal Mortality: II. On Weight-Specific  
408 Mortality. *International Journal of Epidemiology*. 1983;12(3):319-325.
- 409 4. Watkins WJ, Kotecha SJ, Kotecha S. All-cause mortality of low birth weight infants  
410 in infancy, childhood, and adolescence: a population study of England and Wales.  
411 *PLoS medicine*. 2016;13(5):e1002018.
- 412 5. Lee AC, Katz J, Blencowe H, et al. National and regional estimates of term and  
413 preterm babies born small for gestational age in 138 low-income and middle-income  
414 countries in 2010. *Lancet Glob Health* 2013;1:e26-36.
- 415 6. Lee AC, Kozuki N, Cousens S, et al. Estimates of burden and consequences of infants  
416 born small for gestational age in low and middle income countries with  
417 INTERGROWTH-21st standard: analysis of CHERG datasets. *BMJ*. 2017;358(j3677).
- 418 7. Han Z, Mulla S, Beyene J, Liao G, McDonald SD. Maternal underweight and the risk  
419 of preterm birth and low birth weight: a systematic review and meta-analyses.  
420 *International journal of epidemiology*. 2010;40(1):65-101.
- 421 8. Triunfo S, Lanzzone A. Impact of maternal under nutrition on obstetric outcomes.  
422 *Journal of endocrinological investigation*. 2015;38(1):31-38.
- 423 9. World Health Organization. *Maternal anthropometry and pregnancy outcomes: a*  
424 *WHO collaborative study*. World Health Organization; 1995.
- 425 10. Naidu A, Rao N. Body mass index: a measure of the nutritional status in Indian  
426 populations. *European journal of clinical nutrition*. 1994;48:S131-140.
- 427 11. Islam MZ, Akhtaruzzaman M, Lamberg-Allardt C. Nutritional status of women in  
428 Bangladesh: comparison of energy intake and nutritional status of a low income rural  
429 group with a high income urban group. *Asia Pacific Journal of Clinical Nutrition*.  
430 2004;13(1):61-68.
- 431 12. Harris-Fry H, Shrestha N, Costello A, Saville NM. Determinants of intra-household  
432 food allocation between adults in South Asia – a systematic review. *International*  
433 *Journal for Equity in Health*. 2017;16(107).
- 434 13. Boyd NR, Jr., Windsor RA. A meta-evaluation of nutrition education intervention  
435 research among pregnant women. *Health education quarterly*. 1993;20(3):327-345.
- 436 14. Girard AW, Olude O. Nutrition education and counselling provided during  
437 pregnancy: effects on maternal, neonatal and child health outcomes. *Paediatric and*  
438 *Perinatal Epidemiology*. 2012;26(s1):191-204.
- 439 15. Gresham E, Collins CE, Mishra GD, Byles JE, Hure AJ. Diet quality before or during  
440 pregnancy and the relationship with pregnancy and birth outcomes: the Australian  
441 Longitudinal Study on Women's Health. *Public Health Nutrition*. 2016;19(16):2975–  
442 2983.
- 443 16. Ota E, Hori H, Mori R, Tobe-Gai R, Farrar D. Antenatal dietary education and  
444 supplementation to increase energy and protein intake. *Cochrane Database of*  
445 *Systematic Reviews*. 2015(6).
- 446 17. Lopes KdS, Ota E, Shakya P, et al. Effects of nutrition interventions during pregnancy  
447 on low birth weight: an overview of systematic reviews. *BMJ Global Health*.  
448 2017;2(e000389).

- 449 18. Chowdhury M, Raynes-Greenow C, Alam A, Dibley M. Making a balanced plate for  
450 pregnant women to improve birthweight of infants: a study protocol for a cluster  
451 randomised controlled trial in rural Bangladesh. *BMJ Open*. 2017;7(e015393).
- 452 19. Sen B, Ali Z. Spatial Inequality in Social Progress in Bangladesh. *The Bangladesh*  
453 *Development Studies*. 2009;XXXII(2).
- 454 20. *Poverty Maps of Bangladesh 2010*. World Bank Bangladesh, Bangladesh Bureau of  
455 Statistics, and World Food Programme 2011.
- 456 21. *The Food Security Atlas of Bangladesh: Towards a poverty and hunger free*  
457 *Bangladesh*. Planning Commission, Bangladesh Bureau of Statistics and UN World  
458 Food Programme. 2004.
- 459 22. National Institute of Population Research and Training (NIPORT), International  
460 Centre for Diarrhoeal Disease Research Bangladesh (icddr), MEASURE Evaluation.  
461 *Bangladesh District Level Socio-demographic and Health Care Utilization Indicators*.  
462 Dhaka, Bangladesh, and Chapel Hill, NC, USA: NIPORT, icddr, and MEASURE  
463 Evaluation; 2019.
- 464 23. Nahar Q, Choudhury S, Faruque MO, Sultana SSS, Siddiquee MA. *Desirable Dietary*  
465 *Pattern for Bangladesh*. National Food Policy Capacity Strengthening  
466 Programme; 2013.
- 467 24. Arimond M, Torheim LE, Wiesmann D, Joseph M, Carriquiry A. Dietary diversity as  
468 a measure of the micronutrient adequacy of women's diets: results from rural  
469 Bangladesh site. *Washington, DC: Food and Nutrition Technical Assistance II*  
470 *Project (FANTA-2), FHI*. 2009;360.
- 471 25. FAO and FHI. Minimum dietary diversity for women: a guide for measurement.  
472 *Rome: FAO*. 2016.
- 473 26. West Jr PK, Shamim AA, Mehra S, et al. Effect of Maternal Multiple Micronutrient  
474 vs Iron-Folic Acid Supplementation on Infant Mortality and Adverse Birth Outcomes  
475 in Rural Bangladesh: The JiVitA-3 Randomized Trial. *JAMA*. 2014;312(24):2649-  
476 2658.
- 477 27. Zeng L, Cheng Y, Dang S, et al. Impact of micronutrient supplementation during  
478 pregnancy on birth weight, duration of gestation, and perinatal mortality in rural  
479 western China: double blind cluster randomised controlled trial. *BMJ*.  
480 2008;337(7680):1211 - 1215.
- 481 28. Mridha MK, Matias SL, Chaparro CM, et al. Lipid-based nutrient supplements for  
482 pregnant women reduce newborn stunting in a cluster-randomised controlled  
483 effectiveness trial in Bangladesh. *American Society for Nutrition*. 2016;103:236-249.
- 484 29. Rabe-Hesketh S, Skrondal A. *Multilevel and longitudinal modeling using Stata*.  
485 STATA press; 2008.
- 486 30. Alam A, Chowdhury M, Dibley MJ, Raynes-Greenow C. How can we improve the  
487 consumption of a nutritionally balanced maternal diet in rural bangladesh? The key  
488 elements of the "balanced plate" intervention. *International Journal of Environmental*  
489 *Research and Public Health*. 2020;17(17):6289.
- 490 31. Persson LÅ, Arifeen S, Ekström E-C, Rasmussen KM, Frongillo EA, Team MS.  
491 Effects of prenatal micronutrient and early food supplementation on maternal  
492 hemoglobin, birth weight, and infant mortality among children in Bangladesh: the  
493 MINIMat randomised trial. *Jama*. 2012;307(19):2050-2059.
- 494 32. Shaheen R, Francisco Ad, Arifeen SE, Ekström E-C, Persson LÅ. Effect of prenatal  
495 food supplementation on birth weight: an observational study from Bangladesh1-. *Am*  
496 *J Clin Nutr*. 2006;83:1355–1361.

33. King JC. The risk of maternal nutritional depletion and poor outcomes increases in early or closely spaced pregnancies. *The Journal of nutrition*. 2003;133(5):1732S-1736S.
34. Rah JH, Christian P, Shamim AA, Arju UT, Labrique AB, Rashid M. Pregnancy and lactation hinder growth and nutritional status of adolescent girls in rural Bangladesh. *The Journal of nutrition*. 2008;138(8):1505-1511.
35. Zerfu TA, Umata M, Baye K. Dietary diversity during pregnancy is associated with reduced risk of maternal anemia, preterm delivery, and low birth weight in a prospective cohort study in rural Ethiopia. *The American journal of clinical nutrition*. 2016;103(6):1482-1488.
36. Girma S, Fikadu T, Agdew E, et al. Factors associated with low birthweight among newborns delivered at public health facilities of Nekemte town, West Ethiopia: a case control study. *BMC pregnancy and childbirth*. 2019;19(1):220.
37. Abubakari A, Jahn A. Maternal dietary patterns and practices and birth weight in Northern Ghana. *PloS one*. 2016;11(9):e0162285.
38. Yan H, Dang S, Mi B, et al. Study on relationship between mother's animal sourced food intake during pregnancy and neonate birth weight. *Zhonghua liu xing bing xue za zhi= Zhonghua liuxingbingxue zazhi*. 2017;38(5):615-620.
39. Liberato SC, Singh G, Mulholland K. Effects of protein energy supplementation during pregnancy on fetal growth: a review of the literature focusing on contextual factors. *Food & nutrition research*. 2013;57(1):20499.
40. Contento IR. Nutrition education: linking research, theory, and practice. *Asia Pac J Clin Nutr*. 2008;17(1):176-179.
41. Fishbein M, Yzer MC. Using Theory to Design Effective Health Behavior Interventions. *Communication Theory*. 2003;13(2):164-183.
42. Sanghvi T, Haque R, Roy S, et al. Achieving behaviour change at scale: Alive & Thrive's infant and young child feeding programme in Bangladesh. *Maternal & Child Nutrition*. 2016;12(Suppl. 1):141-154.
43. Ahmed SM, Hossain MA, Chowdhury AMR, Bhuiya AU. The health workforce crisis in Bangladesh: shortage, inappropriate skill-mix and inequitable distribution. *Human Resources for Health*. 2011;9(3).
44. Lehmann U, Sanders D. *Community health workers: what do we know about them? The state of the evidence on programmes, activities, costs and impact on health outcomes of using community health workers*. Geneva: World Health Organization;2007.
45. Alive & Thrive. *Alive & Thrive's approach and results in Bangladesh: Rapid improvements in infant and young child feeding practices resulting from a large-scale program*. Dhaka, Bangladesh: Alive & Thrive;2015.
46. Alam A, Rasheed S, Khan NU, et al. How can formative research inform the design of an iron-folic acid supplementation intervention starting in first trimester of pregnancy in Bangladesh? *BMC Public Health*. 2015;15(374).
47. Bhutta ZA, Das JK, Rizvi A, et al. Evidence-based interventions for improvement of maternal and child nutrition: what can be done and at what cost? *The Lancet*. 2013;382:452-477.

## 543 **Acknowledgments**

544 This study is part of research towards a PhD at The University of Sydney funded by  
545 Endeavour Postgraduate Scholarship (PhD); Department of Education and Training,  
546 Australian Government. The study received partial support from the James P. Grant School  
547 of Public Health, BRAC University, Bangladesh, and the Sydney Medical School, The  
548 University of Sydney, Australia. We thank the *Shasthya Kormi*, the *Shasthya Shebika* of  
549 BRAC, and the pregnant women and their families in Sherpur for their time in this study.

## 550 **Funding:**

551 James P. Grant School of Public Health; Bangladesh, and Sydney Medical School  
552 Foundation; Australia

## 553 **Author contributions:**

554 MC conceived the overall study, developed the study design and data collection methods, and  
555 conducted the data analysis, interpreted data, and wrote the first draft of the manuscript. MJD  
556 and CRG provided critical input regarding study design, sample size calculation, outcome  
557 evaluation and the statistical analysis plan. KA provided practical guidance in formulating the  
558 implementation strategy. AA provided crucial input on formative research and process  
559 evaluation design. PK provided technical support for data analyses, and SMB conducted the  
560 dietary analyses. CRG and MC obtained funds for the intervention. CRG, MJD, KA, PK, AA  
561 and SMB critically reviewed the manuscript and approved the final version for submission.  
562 MC, MJD, CRG, PK, KA and AA agreed to be accountable for all investigations necessary to  
563 resolve questions related to the accuracy or integrity of any part of the work.

## 564 **Competing interests:**

565 None to declare

## 566 **Data and materials availability:**

567 The data described in this manuscript, the code book, and the analytic code will be made  
568 available upon request, pending approval by the investigators of an application to use the data.  
569

570 **Supplemental Information**

571 **S1 Table: The mean birth weight and the adjusted mean difference in birth weight of**  
572 **balanced -plate intervention compared to usual programs.**

573 **S2 Table: Percentage of low birth weight and adjusted relative risk of balanced-plate**  
574 **intervention compared to usual programs.**

575 **Table 1: Cluster, baseline maternal and household, and antenatal care and delivery**  
576 **characteristics by study arm**

	<b>Intervention (n=382)</b>	<b>Control (n=397)</b>
Cluster characteristics		
Number of clusters	18	18
Mean (SD) population in clusters in 2016	9775 (2007)	9639 (1763)
Mean (SD) number of households in clusters	2315 (288)	2321 (419)
Mean (SD) number of women of reproductive age	2639 (542)	2631 (481)
Mean (SD) number of pregnant women enrolled per clusters	24.7 (1.0)	24.9 (0.5)
Baseline maternal and household characteristics		
Mother's age (years):		
Mean (SD)	23.0 (4.6)	24.0 (4.3)
15-19	80 (21.7)	64 (17.0)
20-34	280 (76.1)	307 (81.4)
>34	8 (2.2)	6 (1.6)
Missing	14	20
Mother's education:		
No education	82 (22.0)	89 (23.1)
Primary	250 (67.2)	242 (62.7)
Secondary	27 (7.3)	35 (9.1)
Higher	13 (3.5)	20 (5.2)
Missing	10	11
Monthly family income (SD) in Bangladesh Taka		
Less than 5000	87 (23.9)	79 (21.2)
5000 to less than 10,000	190 (52.2)	209 (56.2)
10,000 or more	87 (23.9)	84 (22.6)
Missing	18	25
Father's education:		
No education	130 (35.0)	151 (39.7)
Primary	188 (50.7)	169 (44.5)
Secondary	34 (9.2)	39 (10.3)
Higher	19 (5.1)	21 (5.5)
Missing	11	17
Marital Status		
Married	372 (97.4)	386 (97.3)
Not married	10 (2.6)	11 (2.7)
Parity:		



	<b>Intervention (n=382)</b>	<b>Control (n=397)</b>
Mean (SD)	1.8 (1.2)	1.9 (1.3)
0	36 (10.3)	48 (12.6)
1	134 (38.5)	115 (30.3)
≥2	178 (51.2)	217 (57.1)
Missing	34	17
Previous pregnancy loss		
Yes	67 (19.3)	87 (22.9)
No	281 (80.8)	293 (77.1)
Missing	34	17
Gestation at enrolment (weeks) Mean (SD)	10.1 (3.2)	9.6 (3.2)
Missing	27	2
<b>Antenatal care and delivery characteristics</b>		
<b>Iron Folic Acid Supplements</b>		
Mean number consumed (SD)	45.6 (61.8)	29.0 (46.8)
Any use	117 (30.6)	70 (17.6)
None	265 (69.4)	327 (83.4)
<b>Antenatal care visit by SK</b>		
Mean number of visits (SD)	3.8 (2.6)	3.6 (2.2)
<4 visits	158 (41.1)	198 (49.9)
≥4 visits	224 (58.6)	199 (50.1)
<b>Antenatal care in health centres</b>		
Mean number of visits (SD)	0.7 (1.1)	1.0 (1.4)
No Visit	227 (59.4)	246 (51.9)
<4 visits	143 (37.4)	169 (42.6)
≥4 visits	12 (3.1)	22 (5.5)
<b>Place of delivery</b>		
Facility	79 (20.7)	66 (16.6)
Home	280 (73.3)	323 (81.4)
Unknown	23 (6.0)	8 (2.0)
<b>Mode of delivery</b>		
Normal	331 (86.7)	361 (90.9)
C-Section	33 (8.6)	34 (8.6)
Unknown	18 (4.7)	2 (0.5)
<b>Time of birth weight measurement</b>		
Within 24h	266 (69.6)	290 (73.1)
24 to 48h	75 (19.6)	61 (15.4)
48 to 72h	13 (3.4)	19 (4.8)
Unknown	28 (7.3)	27 (6.8)

Numbers are frequencies (and column percentage) unless stated otherwise

577 **Table 2: The mean birth weight and the mean difference in birth weight of balanced-plate intervention compared to usual programs.**

	Number of participants		Birth weight (g)		Mean difference			
	Intervention	Control	Intervention Mean (SD)	Control Mean (SD)	Estimate	(95%CI)	P-value	P-value for interaction
<b>Overall</b>	382	397	2861.0 (444.2)	2736.8 (423.2)	127.5	(11.1, 243.9)	0.032	
<b>Mother's age<sup>1</sup> (years)</b>								0.009
<20	80	64	2916.3 (471.1)	2637.5 (481.0)	299.1	(101.6, 496.6)	0.003	
>=20	288	313	2847.6 (443.4)	2762.6 (401.1)	95.6	(-17.3, 208.4)	0.097	
<b>Mother's education<sup>2</sup></b>								0.330
None	82	89	2869.5 (460.6)	2693.3 (339.7)	175.1	(29.9, 320.4)	0.018	
Primary	250	242	2839.2 (443.9)	2761.6 (394.4)	92.9	(-28.0, 213.7)	0.132	
Secondary or higher	40	55	2982.5 (435.5)	2741.8 (588.0)	226.1	(-33.5, 485.8)	0.088	
<b>Family income<sup>3</sup></b>								0.236
Low	87	79	2819.5 (397.9)	2663.3 (420.4)	166.8	(10.7, 322.8)	0.036	
Medium	190	209	2806.8 (421.7)	2750.7 (390.8)	51.8	(-70.0, 173.6)	0.404	
High	87	84	2995.4 (514.5)	2791.7 (433.2)	183.3	(-40.9, 407.4)	0.109	

578 Birth weight was analysed using linear regression. We adjusted all models for clusters using generalised estimating equation (GEE) models, assuming an exchangeable correlation structure and applied a sandwich  
579 estimator to standard errors. <sup>1</sup> n=745 due to 34 missing maternal age values. <sup>2</sup> n=758 due to 21 missing maternal education values. <sup>3</sup> n=736 due to 43 missing family income values.

580

581

582 **Table 3: Percentage of low birth weight and relative risk of balanced-plate intervention compared to usual programs.**

	Number of participants		Low birth weight (<2,500g)				Relative risk			
	Intervention	Control	Intervention n (%)		Control n (%)		Estimate	(95%CI)	P-value	P-value for interaction
<b>Overall</b>	382	397	37	(10)	87	(22)	0.43	(0.25, 0.75)	0.003	
<b>Mother's age<sup>1</sup> (years)</b>										0.217
<20	80	64	6	(8)	17	(27)	0.28	(0.11, 0.71)	0.007	
>=20	288	313	31	(11)	62	(20)	0.54	(0.29, 0.98)	0.044	
<b>Mother's education<sup>2</sup></b>										0.240
None	82	89	11	(13)	22	(25)	0.54	(0.28, 1.05)	0.069	
Primary	250	242	25	(10)	47	(19)	0.50	(0.26, 0.93)	0.029	
Secondary or higher	40	55	1	(3)	12	(22)	0.11	(0.02, 0.8)	0.029	
<b>Family income<sup>3</sup></b>										0.441
Low	87	79	9	(10)	25	(32)	0.31	(0.13, 0.76)	0.010	
Medium	190	209	23	(12)	41	(20)	0.60	(0.32, 1.14)	0.117	
High	87	84	5	(6)	12	(14)	0.45	(0.13, 1.53)	0.199	

583 Low birth weight was analysed using binomial regression with a log link. We adjusted all models for clusters using generalised estimating equation (GEE) models, assuming an exchangeable  
584 correlation structure and applied a sandwich estimator to standard errors. <sup>1</sup> n=745 due to 34 missing maternal age values. <sup>2</sup> n=758 due to 21 missing maternal education values. <sup>3</sup> n=736 due to  
585 43 missing family income values

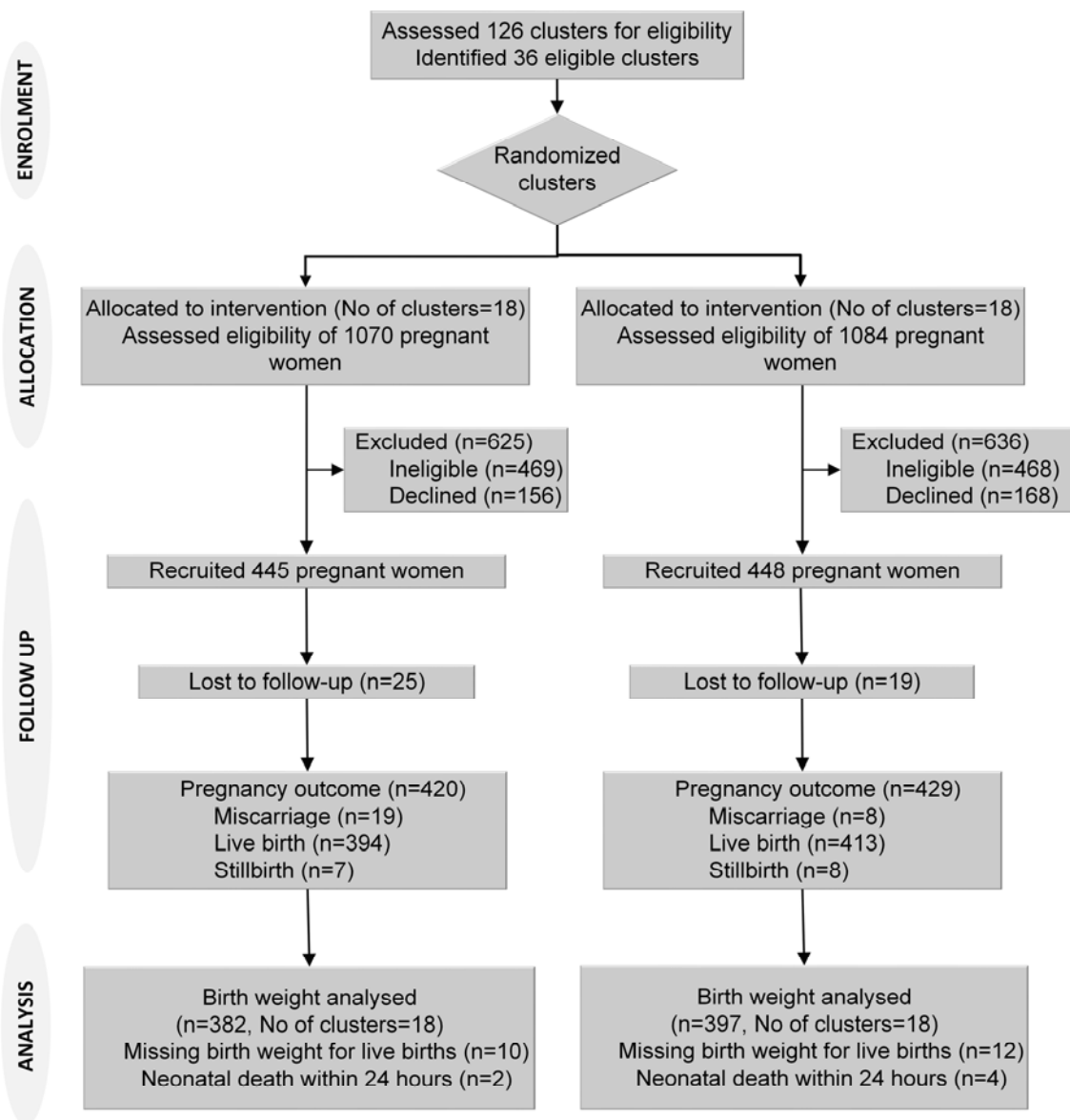
586

587 **Table 4: Effect of balanced plate nutrition education intervention on maternal dietary diversity and individual food groups**

Indicators	Months of pregnancy								
		2	3	4	5	6	7	8	9
N	Inter.	131	367	364	349	339	302	257	159
	Cont.	167	362	369	366	345	318	272	178
Dietary Diversity	Mean Diff. (95% CI)	0.19 (-0.11, 0.49)	0.47 <b>(0.20, 0.73)</b>	0.63 <b>(0.36, 0.90)</b>	0.80 <b>(0.53, 1.07)</b>	0.98 <b>(0.71, 1.25)</b>	1.04 <b>(0.77, 1.31)</b>	1.14 <b>(0.86, 1.42)</b>	0.96 <b>(0.67, 1.25)</b>
Starchy food	RR (95% CI)	1.16 (0.95, 1.41)	1.01 (0.99, 1.03)	1.03 (0.99, 1.08)	1.02 (0.98, 1.07)	1.02 (0.99, 1.06)	1.03 (0.97, 1.08)	1.05 (0.97, 1.13)	1.09 (0.92, 1.30)
Beans, legumes, nuts	RR (95% CI)	1.19 (0.82, 1.75)	<b>1.37 (1.06, 1.76)</b>	<b>1.40 (1.11, 1.77)</b>	<b>1.38 (1.07, 1.79)</b>	<b>1.50 (1.17, 1.93)</b>	<b>1.66 (1.29, 2.14)</b>	<b>1.86 (1.37, 2.52)</b>	<b>1.81 (1.11, 2.93)</b>
Dairy food	RR (95% CI)	<b>2.31 (1.09, 4.91)</b>	1.44 (0.78, 2.66)	1.69 (0.82, 3.51)	<b>2.36 (1.10, 5.08)</b>	<b>2.81 (1.35, 5.85)</b>	<b>2.97 (1.40, 6.32)</b>	<b>2.92 (1.54, 5.54)</b>	<b>2.34 (1.21, 4.55)</b>
Fish and meat	RR (95% CI)	1.12 (0.9, 1.39)	1.00 (0.97, 1.04)	1.07 (0.99, 1.14)	1.05 (0.97, 1.13)	1.06 (1.00, 1.13)	<b>1.09 (1.01, 1.17)</b>	1.06 (0.97, 1.15)	1.14 (0.95, 1.36)
Eggs	RR (95% CI)	1.48 (0.72, 3.04)	1.97 (1.00, 3.88)	<b>2.51 (1.28, 4.94)</b>	<b>2.92 (1.59, 5.36)</b>	<b>3.59 (2.00, 6.41)</b>	<b>3.59 (1.91, 6.77)</b>	<b>3.82 (2.17, 6.73)</b>	<b>4.65 (2.18, 9.88)</b>
Vitamin A rich foods	RR (95% CI)	1.17 (0.7, 1.96)	1.12 (0.72, 1.75)	1.15 (0.87, 1.52)	1.20 (0.92, 1.57)	1.26 (0.98, 1.62)	1.14 (0.87, 1.49)	1.26 (0.95, 1.67)	1.37 (0.97, 1.94)
Other fruits & vegetables	RR (95% CI)	1.92 (0.80, 4.63)	<b>2.59 (1.24, 5.43)</b>	<b>2.38 (1.19, 4.75)</b>	<b>2.87 (1.34, 6.14)</b>	<b>2.88 (1.32, 6.25)</b>	<b>3.64 (1.71, 7.73)</b>	<b>5.34 (2.54, 11.19)</b>	<b>4.55 (2.04, 10.16)</b>

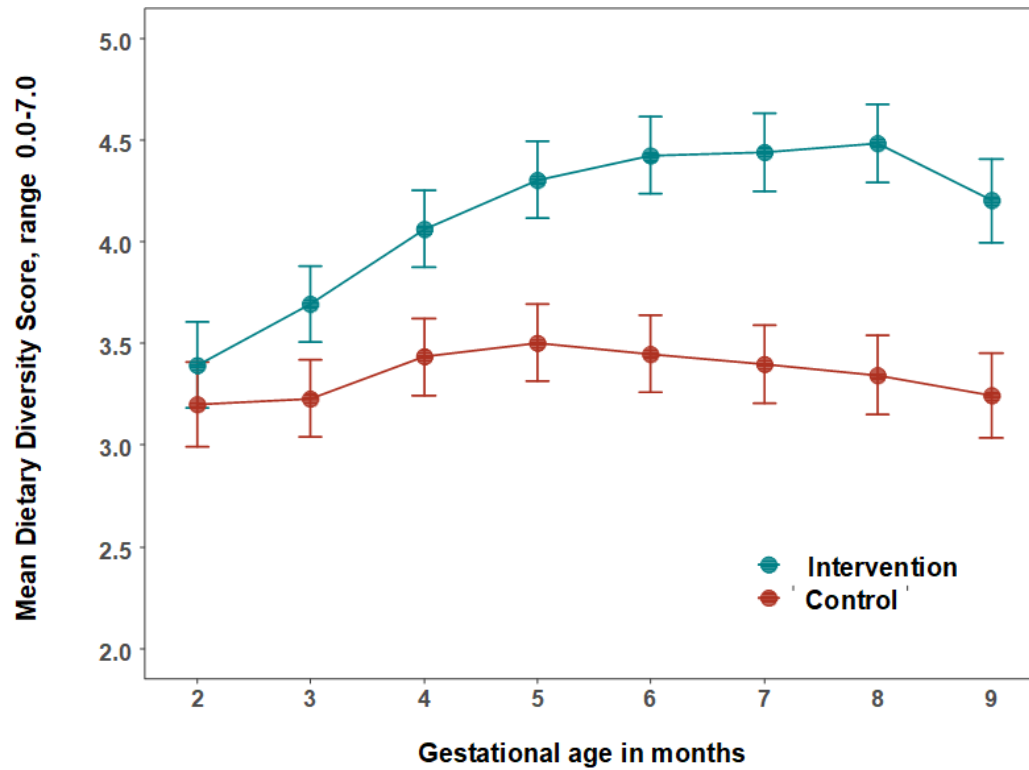
588 Inter.= Intervention, Cont.= Control, Mean Diff.= Mean Difference, CI= Confidence Interval, RR= Relative Risk, 95% CI presented in bold font is statistically significant (p-  
589 value <0.05)

590 **Figure 1: Trial flow chart**



591  
592

**Figure 2: The mean number and 95% confidence intervals\* of food groups consumed by women per day by treatment group.**



	Number of Observations							
<i>Intervention</i>	131	367	364	349	339	302	257	159
<i>Control</i>	167	362	369	366	345	318	272	178

\* The estimated the mean number of food groups consumed in the last 24 hours and 95% confidence intervals were calculated using multilevel linear mixed models with study arms (intervention =1 and control =0) and gestational months (2-9) as fixed effects with an interaction term between them and two random effect variables for adjusting the cluster RCT design and the repeated measurements.