

# Comparative efficacy of different eating patterns in the management of type 2 diabetes and prediabetes: A systematic review and Bayesian network meta-analysis of randomized controlled trials

Ben-tuo Zeng<sup>1</sup>, Hui-qing Pan<sup>2</sup>, Feng-dan Li<sup>3</sup>, Zhen-yu Ye<sup>1</sup>, Yang Liu<sup>1,\*</sup> and Ji-wei Du<sup>4,\*</sup>

<sup>1</sup> School of Medicine, Xiamen University, Xiamen 361102, China; zengbentuo@xmu.edu.cn (B.-T.Z.); yezhenyu1999@gmail.com (Z.-Y.Y.)

<sup>2</sup> School of Medicine, Tongji University, Shanghai 200331, China; phq19991011@126.com

<sup>3</sup> Nursing Department, Xiang'an Hospital of Xiamen University, Xiamen 361102, China; 18350278581@163.com

<sup>4</sup> Nursing Department, The University of Hong Kong – Shenzhen Hospital, Shenzhen 518040, China;

\* Correspondence: liuyang123@xmu.edu.cn (Y.L.); dujw@hku-szh.org (J.-W.D.);

Tel.: +86-18150115008 (Y.L.); +86-15359350116 (J.-W.D.)

**Abstract:** The study aimed to compare and rank the efficacy of various eating patterns for glycemic control, anthropometrics, and serum lipid profiles in the management of type 2 diabetes and prediabetes, and provide evidence for personalized clinical decision-making. We conducted a network meta-analysis using arm-based Bayesian methods and random effect models following the Cochrane handbook. We drew the conclusions using the partially contextualized framework by the GRADE working group. Twelve English and Chinese databases and registers were retrieved, and we obtained 9,534 references, of which 107 independent studies were eligible, including 8,909 participants, ten experimental diets, and thirteen outcome variables. The meta-analysis denoted that: caloric restriction was ranked as the best pattern for weight loss (SUCRA 86.8%) and reducing waist circumference (82.2%), high-fiber diets for lowering fasting plasma glucose (82.1%) and insulin (79.4%), Dietary Approaches to Stop Hypertension for reducing glycated hemoglobin (90.5%) and systolic blood pressure (87.9%), simple high-protein diets for improving insulin resistance (86.3%) and diastolic blood pressure (74.6%), low-carbohydrate diets for improving body mass index (81.6%) and high-density lipoprotein (84.0%), low-glycemic-index diets for lowering total cholesterol (87.5%) and low-density lipoprotein (86.6%), and Paleolithic diets for reducing triacylglycerol (83.4%). However, the results were of moderate sensitivity, and publication bias of glycated hemoglobin, weight, and body mass index existed. Meta-regression suggested that macronutrients, energy intake, baseline, and weight may modify outcomes differently, while the duration did not show a significant association with results. Forty-nine (39.8%) out of 123 pieces of evidence was rated as moderate quality, and there was no high-quality evidence. Additionally, only 38.2% of the effect sizes of the evidence met the minimally important clinical difference threshold. Clinicians can use the evidence to provide personalized nutrition consultations to patients according to their baseline characteristics. However, the results should be carefully explained and applied because of the sensitivity and low quality.

**Keywords:** diabetes mellitus, type 2; prediabetic state; diet therapy; medical nutrition therapy; network meta-analysis; evidence-based medicine

## 1. Introduction

Type 2 diabetes mellitus (T2DM) has been a major issue for all people and healthcare professionals worldwide, leading to a large proportion of health expenditure. It was estimated that 10.5% of people aged 20-75 suffered from diabetes mellitus globally, within which over 90% were T2DM, with total health spending of 966 billion US dollars [1]. Since T2DM has proven to be preventable and controllable [2], the remission of a prediabetic state (PreD), or impaired glucose tolerance (IGT), was also concerned and included in the comprehensive prevention of T2DM incidence. Dietitians and clinicians have explored diets for the remission of T2DM since the pre-insulin era [3], and nowadays, medical nutrition therapy is a universal, highly cost-effective treatment for T2DM patients with a strong evidence basis, recommended by multiple guidelines [4-6].

Eating patterns play the leading role in the entire medical nutrition therapy. Various patterns of different components and food groups have been investigated and applied to the treatment of T2DM/PreD patients, from the very high-fat diet by John Rollo in the 18<sup>th</sup> century [7] to the pattern recommended by American Diabetes Association (ADA) in 2003 [8]. From an evidence-based perspective, hundreds of random controlled trials (RCT), cohorts, and related systematic reviews have been carried out to quantify the efficacy of popular and widely-used eating patterns, e.g., caloric restriction (CR), low-glycemic-index diets (LGID), low-carbohydrate diets (LCD), and Mediterranean diets (Med) [9-14].

However, a common and prominent aspect of all evidence is that a variance of the effectiveness of eating patterns exists in improving different indicators such as blood glucose, weight, and cardiovascular risk factors. For example, Diabetes Canada 2018 guidelines [5] summarized the properties of a series of dietary interventions, pointing out the difference between diets. Consequently, diabetes guidelines strongly recommend a personalized medical nutrition therapy process under the supervision of registered dietitians and multidisciplinary professionals [4-6]. Despite the recommendation, it remains a question of how to choose and apply appropriate dietary patterns for professionals, due to the lack of evidence that directly compares the relative efficacy of different interventions. Whether a specific diet is proper for an individual with specific laboratory profiles and situations and whether it is best-matched remains unclear enough, though high-quality evidence of the effectiveness of particular patterns having been drawn.

NOTE: This preprint reports new research that has not been certified by peer review and should not be used to guide clinical practice.

It is not cost-effective to carry out multi-arm trials directly comparing several diets. Thus, it is crucial to conduct a network meta-analysis to synthesize evidence. Previous network meta-analyses [15, 16] have assessed a number of patterns, but the authors only included a limited number of studies and outcomes. Furthermore, short-term trials were not considered to be included in the analyses, but a short-term effect may be more common for some patterns [17]. Therefore, this study aimed to evaluate the relative efficacy of different eating patterns on glycemic control, anthropometrics and serum lipid profiles in the management of patients with T2DM or PreD, and conclude evidence to promote clinical decision-making.

## 2. Methods

### 2.1. Study Design

This systematic review was an arm-based Bayesian network meta-analysis of randomized controlled trials, following the Cochrane Handbook for Systematic Reviews of Interventions Version 6.2 [18]. We reported the results according to the Preferred Reporting Items for Systematic reviews and Meta-Analyses Incorporating Network Meta-analysis (PRISMA-NMA) guideline [19]. An a priori protocol was prepared and registered in PROSPERO (registration number CRD42021278268).

### 2.2. Eligibility Criteria

We selected peer-reviewed articles and thesis according to the population (P), interventions (I), comparisons (C), outcomes (O), and study design (S). A detailed description of the interventions is in Appendix A.

Inclusion criteria were: (1) P: Adults with type 2 diabetes mellitus or prediabetes; (2) I: The study should contain at least one arm of the interventions as follows: caloric restriction (CR), high-fiber diet (fiber), Dietary Approaches to Stop Hypertension (DASH), high-protein diet (HPD), high-fat diet (HFD), low-carbohydrate diet (LCD), low-glycemic-index diet (LGID), Mediterranean diet (Med), Nordic diet (ND), Paleolithic diet (Paleo), Portfolio diet (Pfd), and vegetarian/vegan/plant-based diet (VD); (3) C: The study should contain the control arm as follows, or contain two or more intervention arms: standard diabetes diet, e.g. ADA 2003 diet [8]; *ad libitum*; general nutrition counselling; or placebo (no intervention); (4) O: the study should reported at least one outcome as follows, where fasting plasma glucose (FPG) was the primary outcome of this meta-analysis: glycemic control, including FPG, glycated hemoglobin (HbA<sub>1c</sub>), fasting insulin (FIns) and insulin resistance (IR); anthropometrics, including weight, body mass index (BMI), waist circumference (WC), waist-to-hip ratio (WHR), and body fat rate (BFR), systolic blood pressure (SBP) and diastolic blood pressure (DBP); serum lipid profiles, including triacylglycerol (TG), total cholesterol (TC), low-density lipoprotein cholesterol (LDL) and high-density lipoprotein cholesterol (HDL); renal function, including serum creatinine, serum urea, serum uric acid and (estimated) glomerular filtration rate; other dichotomous outcomes, including attrition rate, remission of T2DM, incidence of hypoglycemia, incidence of drug or insulin discontinuation, incidence of T2DM from PreD; (5) S: randomized controlled trials (RCT); (6) Language: English or Chinese.

If the studies met one of the criteria below, they were excluded: (1) I: any prescribed between-group difference on exercise, antihyperglycemic medications, insulin injection, or other co-interventions; added a single supplement, or single specified food which did not provide macronutrients; or use meal replacement to provide an appreciable percentage of energy intake; or total energy intake (TEI) < 800 kcal/d (3.3 MJ/d); or the adjustment of intervention during the trial; (2) Duration: less than four weeks or one month for parallel RCTs or any phase of crossover RCTs; or intermittent intervention; (3) S: single-arm or self-controlled trials; (4) Data availability: trials not completed, or without data analysis and published reports; or articles with inappropriate or insufficient data.

### 2.3. Search Strategy

We conducted searches of electronic databases and trial registers: PubMed, Web of Science, Embase, CINAHL and Open Dissertation, ProQuest, Scopus, Global Index Medicus, Cochrane Central Register of Controlled Trials, Clinicaltrials.gov, SinoMed, WanFang Med, and CNKI. All publications from the inception to 13 October 2021 were initially retrieved. An updated search was conducted on March 17, 2022 using Scopus and Google Scholar after completing major data extraction works to identify the latest relevant articles. A “participants AND intervention AND design NOT exclusion” strategy was applied, using MeSH terms and free entry terms. Full search strategy can be found in File S1.

### 2.4. Data Selection and Extraction

All references identified from the search were imported into EndNote 20 (Clarivate, PA, USA) to move duplicates automatically and manually. After automatic exclusion using terms “Systematic Review; Meta-analysis; Cohort; Protocol; rats; gestation; pregnan\*; child; adolescent; Roux-en-Y; Bariatric Surgery; mechanism; intermittent” and relevant Chinese terms, reviewers (B.-T.Z., H.-Q.P., and F.-D.L.) assessed the eligibility of publications and trials in the order of title, abstract and full text. All references were decided by at least two reviewers, and arisen discrepancies were discussed and decided by the three authors together.

We used MySQL 8.0 (Oracle Corporation, TX, USA) to perform data extraction and manage data. Basic information, study designs, arms, participant characteristics, nutrition intake, and outcome measurements at different timepoints were extracted (File S2). Two authors (B.-T.Z. and Z.-Y.Y.) independently extracted and checked the data.

R 4.1.3 (R Foundation for Statistical Computing, Vienna, Austria) and Microsoft Excel 2019 (Microsoft Corporation, WA, USA) were used for data conversion and imputation. For continuous outcomes, we calculated the change from baseline and its standard deviation (SD) based on the baseline and the last measurement time point of each arm according to Cochrane Handbook, if not reported by the article. Correlation coefficients for changes from baseline and for crossover RCTs were estimated using reported SDs from included studies (File S3). Median and interquartile range was converted into mean and standard deviation using

methods from Luo et al. [20] and Wan et al. [21] after testing for the skewness using methods from Shi et al. [22]. WebPlot Digitizer 4.5 [23] was applied for extracting data from figures. Ultimately, R package “mice” [24] (predictive mean matching or random forest method) was used for the imputation of missing values of covariates for meta-regression.

### 2.5. Risk of Bias Assessment

A revised Cochrane risk of bias tool for randomized trials – Risk of Bias 2 [25] and Risk of Bias 2 for crossover trials [26] were employed to assess the risk of bias (RoB) of parallel and crossover RCTs, respectively. Two reviewers (B.-T.Z. and H.-Q.P.) assessed the RoBs independently, with all arisen divergences discussed and reached consensus.

### 2.6. Data Synthesis

Our study synthesized evidence through an arm-based Bayesian network meta-analysis in a random effect model. We use R package “gemtc” 1.0-1 for meta-analysis, inconsistency test, heterogeneity test, meta-regression, and sensitivity analysis [27, 28]. Markov chain Monte Carlo sampling was performed using JAGS 4.3.0 via R package “rjags” 4.12 [29, 30]. Comparison-adjusted funnel plots, Egger’s test, and Begg’s test were performed to detect publication bias under a frequentist framework and random effect model using the R package “netmeta” 2.1-0 and “metafor” 3.4-0 [31, 32].

Continuous outcomes were presented as mean difference (MD) or difference in percentage change from baseline (Percentage MD, PMD, only for fasting insulin and insulin resistance) and 95% credible intervals (95% CrI), while relative risk (RR) and 95% CrI were for dichotomous variables.

### 2.7. Quality of the Evidence and Drawing Conclusions

We rated the quality of evidence of comparisons of experimental diets and control diets based on the GRADE Working Group approach for rating the quality of treatment effect estimates from network meta-analysis [33] and the GRADE handbook [34]. Conclusions were drawn according to the partially contextualized framework for network meta-analysis by the GRADE working group [35], where minimal clinically important differences (MCID) and thresholds for moderate and large beneficial/harm effects were identified based on previous studies [14, 36-38].

## 3. Results

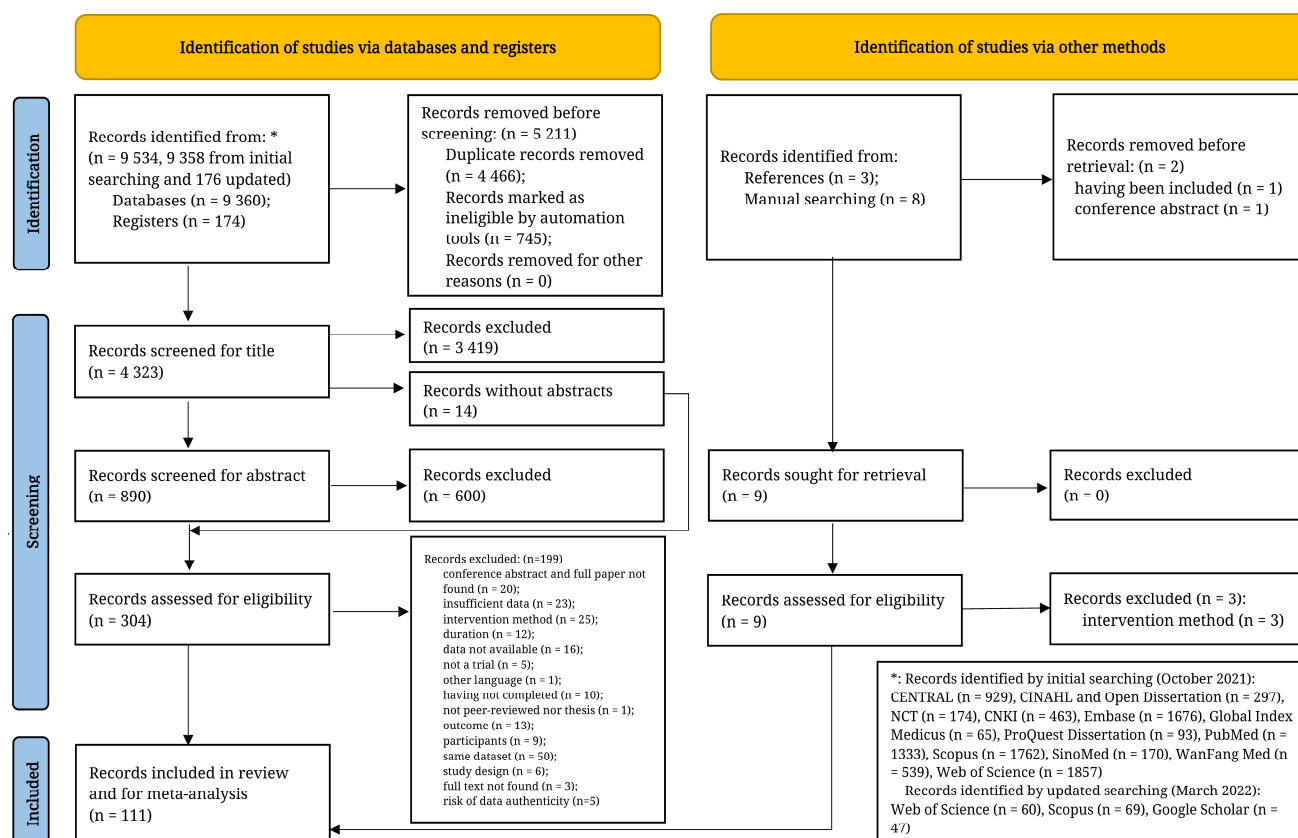
We identified 9358 publications and registrations from the initial search, and 176 from the updated search. After removing 4466 duplicates, 4164 were excluded through title screening, 600 excluded through abstract screening, and 199 excluded through full-text screening. Manual search and search of reference lists obtained 11 articles, where six were included. As a result, 111 publications [39-149] were included, among which 107 independent studies were identified (Figure 1). All excluded items through full-text screening and their reason for exclusion were listed in File S4.

Among our prescribed outcomes, data of FPG, HbA<sub>1c</sub>, FIns, IR, weight, BMI, WC, SBP, DBP, TG, TC, HDL, LDL, and attrition rate were sufficient to form networks and perform a meta-analysis. However, other outcomes were not analyzed due to insufficient data.

### 3.1. Study characteristics

The 107 included studies contained 8909 participants for data analysis (full-dataset, completer, or intention-to-treat analysis) and 8583 completers. A total of ten experimental diets and 223 arms was reported. The studies reported efficacy of CR, DASH, fiber, HFD, HPD, LCD, LGID, Med, Paleo, and VD, but ND and PfD were not included.

Characteristics of the studies are displayed in Table 1. Studies were from 26 countries, where 31.8% were from China, 15.0% from the USA, 9.3% from Australia, and 4.7% from Canada. We included 16 crossover RCTs and 91 parallel RCTs. Among them, seven were multi-arm, and six were multicenter. Four studies reported their outcomes in two or more publications. Only five studies focused on PreD population; considering that there was not significant difference among the PreD RCTs and the T2DM RCTs, we did not distinguish them in the meta-analysis. Fundings and conflicts of interest of the studies are listed in File S5.



**Figure 1.** PRISMA flowchart of data selection. CENTRAL, Cochrane Central Register of Controlled Trials; NCT, ClinicalTrials.gov.

**Table 1.** Characteristics of included studies.

Study Information				Intervention					Arms and characteristics									
Basic Information		Type	Objective	RoB	Duration (week)	Intensity <sup>a</sup>	Arm	Size	Participants <sup>b</sup>				Nutrition Intake <sup>c</sup>					
Study ID	Origin								Sex ratio	Age (years)	BMI (kg/m <sup>2</sup> )	TEI	Pr	Fat	CHO	GI	fiber	
Al-Jazzaf 2007[39]	Kuwait	S	P	T2DM	SC	6	3	control	16	0.563	51.9 ± 12.8	34.6 ± 4.8	2270	17	33	49	73	25
								LGID	16	0.438	55.3 ± 8.9	33 ± 3	2376	17	36	47	61	25
								LGID	18	0.611	48.2 ± 8	34.4 ± 5.4	1806	18	35	51	62	26
Azadbakht 2011[40]	Iran	S	X	T2DM	H	8	2	control	31	0.581			2165	15	28	57		
								DASH	31	0.581			2189	16	29	55		
Bahado-Singh 2015[41]	Jamaica	S	P	T2DM	SC	24	3	control	24		43 ± 2.3	27.1 ± 0.8		30	32	45		25
								LGID	29		42.5 ± 2	26.11 ± 0.78		30	30	45		32
Barnard 2006/9[42, 43]	USA	S	P	T2DM	SC	74	2	control	50	0.660	54.6 ± 10.2	35.9 ± 7	1422	21	34	47		18
								VD	49	0.551	56.7 ± 9.8	33.9 ± 7.8	1366	15	22	66		27
Brand 1991[44]	Australia	S	X	T2DM	SC	12	3	control	16	0.375	62 ± 9	25 ± 5	1623	19	31	46	90	26
								LGID	16	0.375	62 ± 9	25 ± 5	1654	22	30	44	77	26
Brehm 2009[45]	USA	S	P	T2DM	SC	52	3	control	52	0.673	56.5 ± 8.91	35.9 ± 3.34	1550	18	28	54		
								HFD	43	0.605	56.5 ± 8.91	35.9 ± 3.34	1550	16	38	46		
Breukelman 2019/21[46, 47]	South Africa	S	P	T2DM	H	16	2	control	13	0.692	58.3 ± 5.53	38.2 ± 10.66					10	
								LCD	10	0.600	54.2 ± 12.67	38.9 ± 6.06						
Brinkworth 2004[48]	Australia	S	P	T2DM	H	64	2	control	19	0.632	62.7 ± 7.85	33.3 ± 5.67		15	30	55		30
								HPD	19	0.579	60.9 ± 7.85	33.6 ± 5.23		30	30	40		30
Brunerova 2007[49]	Czech	S	P	T2DM	H	12	3	control	13		51.2 ± 3.3	34.7 ± 3.6	1800	10	30	60		20
								HFD	14		54.7 ± 3.8	33.4 ± 4.5	1800	10	45	45		20
Cao 2011[50]	China	S	P	T2DM	SC	52	2	control	45	0.378	53.2 ± 6.5	35.9 ± 6.5	1860	20	32	48		
								LCD	45	0.333	54.2 ± 6.2	35.4 ± 6.2	1980	22	45	33		
Ceriello 2014[51]	Spain	S	P	T2DM	SC	12	2	control	12	0.333		29.2 ± 3.81						
								Med	12	0.250		29.8 ± 4.85						
Chandalia 2000[52]	USA	S	X	T2DM	H	6	4	control	13	0.077	61 ± 9	32.3 ± 3.9	2308	15	30	55		24
								fiber	13	0.077	61 ± 9	32.3 ± 3.9	2308	15	30	55		50
Chen 2020a[53]	China (Taiwan)	S	P	T2DM	SC	76	3	control	42	0.619	64.1 ± 7.4	26.55 ± 3.69	1469	20	41	41		
								LCD	43	0.605	63.1 ± 10.5	27.31 ± 4.53	1430	23	46	25		
Chen 2020b[54]	China	S	P	PreD	SC	12	2	control	43	0.628	51.9 ± 11.8	25.2 ± 4					25	
								LCD	57	0.596	54.9 ± 11.9	25.5 ± 2.9						
Choi 2013[55]	South Korea	S	P	T2DM	SC	12	2	control	38		56 ± 8.6	26.74 ± 2.16	1785	20	20	60		
								CR	38		55.5 ± 7	27.36 ± 3	1396	20	20	60		
Coppell 2010[56]	New Zealand	S	P	T2DM	SC	24	2	control	48	0.563	58.4 ± 8.8	34.3 ± 5.8						
								fiber	45	0.622	56.6 ± 8.8	35.1 ± 6.1		15	30	55		40
Coulston 1989[57]	USA	S	X	T2DM	SC	6	4	control	8	0.375	66 ± 8.49	25.5 ± 2.26		20	20	60		
								LCD	8	0.375	66 ± 8.49	25.5 ± 2.26		20	40	40		
Daly 2006[58]	UK	M	P	T2DM	SC	12	2	control	39	0.529	59.1 ± 10.57	36.7 ± 9	1434	21	33	45		14
								LCD	40	0.510	58.2 ± 11.07	35.4 ± 5	1290	26	40	34		10



Study Information				Intervention				Arms and characteristics										
Basic Information		Type	Objective	RoB	Duration (week)	Intensity <sup>a</sup>	Arm	Size	Participants <sup>b</sup>				Nutrition Intake <sup>c</sup>					
Study ID	Origin								Sex ratio	Age (years)	BMI (kg/m <sup>2</sup> )	TEI	Pr	Fat	CHO	GI	fiber	
Davis 2009[59]	USA	S	P	T2DM	SC	52	2	control	50	0.260	53 ± 7	37 ± 6	1810	19	31	50	17	
Ding 2010[60, 61]	China	S	P	T2DM	H	24	2	LCD	55	0.182	54 ± 6	35 ± 6	1642	23	44	33	15	
								LGID	39	0.625	60.65 ± 6.92	30.24 ± 3.43	2012	14	30	59		
								control	90	0.567	59 ± 8	35.1 ± 5.3	1667	22	40	40		
Durrer 2021[62]	Canada	S	P	T2DM	L	12	4	control	98	0.561	58 ± 11	36 ± 6	984	43	31	27		
Elhayany 2010[63]	Israel	M	P	T2DM	H	52	2	control	55	0.509	56 ± 6.1	31.8 ± 3.3	2221	20	30	50	15	
								Med	63	0.444	57.4 ± 6.1	31.1 ± 2.8	2221	20	30	50	30	
								LCD	61	0.492	55.5 ± 6.5	31.4 ± 2.8	2221	20	45	35	30	
Esposito 2009[64]	Italy	S	P	T2DM	L	208	2	control	107	0.514	51.9 ± 10.7	29.5 ± 3.6	1650					
Fabricatore 2011[65]	USA	S	P	T2DM	SC	40	3	Med	108	0.500	52.4 ± 11.2	29.7 ± 3.4	1650					
								control	39	0.795	52.5 ± 8.12	35.8 ± 4.37	1676	19	33	50	65	16
Fan 2010[67]	China	S	P	T2DM	SC	12	2	LGID	40	0.800	52.8 ± 8.85	36.7 ± 5.06	1624	18	40	41	57	18
Fan 2013[66]	China	S	P	T2DM	SC	12	2	control	60									
								LGID	60									
Fang 2016[69]	China	S	P	T2DM	SC	24	2	control	25	0.462	69.1 ± 8.2	25.8 ± 2.5						
								LGID	26	0.462	69.3 ± 7.9	25.7 ± 2.7						
Fang 2019[68]	China	S	P	T2DM	SC	24	2	control	95	0.516	67.3 ± 9.8			15	25	60		
								LGID	105	0.495	68.2 ± 9.2		15	25	60	55		
Gannon 2003[71]	USA	S	X	T2DM	SC	5	4	control	283	0.481	56.78 ± 5.34		1835					
								CR	284	0.451	57.78 ± 5.14		1080					
Gannon 2004[70]	USA	S	X	T2DM	H	5	4	control	12	0.167	61	31	2266	15	34	53	26	
								HPD	12	0.167	61	31	2235	30	30	40	29	
Goldstein 2011[72]	Israel	S	P	T2DM	SC	52	2	control	8	0.000	63.3	31	2825	15	30	55	24	
								LCD	8	0.000	63.3	31	2825	30	50	20	36	
Gram-Kampmann 2022[73]	Denmark	S	P	T2DM	SC	24	2	control	26	0.538	55 ± 8	33.3 ± 3	1937	19	40	43		
								LCD	26	0.500	57 ± 9	33.1 ± 3.6	1725	24	58	20		
Guldbrand 2012[74]	Sweden	M	P	T2DM	SC	24	2	control	20	0.591	55.2 ± 12.66	35.2 ± 6.57	1600	23	28	48	30	
								LCD	44	0.551	57.3 ± 6.3	32.5 ± 6.3	1642	23	63	13	16	
Guo 2014[75]	China	S	P	T2DM	SC	104	2	control	31	0.581	62.7 ± 11	33.8 ± 5.7	1700	24	31	44		
								LCD	30	0.533	61.2 ± 9.5	31.6 ± 5	1700	20	47	31		
Han 2021[76]	China	S	P	T2DM	SC	24	2	control	120		63.2 ± 13.1	26.98 ± 4.15						
								LGID	123		63.2 ± 13.1	26.42 ± 3.65						
Hashemi 2019[77]	Iran	S	P	T2DM	SC	12	2	control	61	0.535	53.74 ± 3.48	25.39 ± 3.95	1798	17	28	55		
								LCD	60	0.333	49.13 ± 13.06		1796	29	58	14		
He 2017[78]	China	S	P	T2DM	SC	12	3	control	40	0.600			1775	18	30	52		
								DASH	35	0.629			1771		27			
Heilbronn 2002[79]	Australia	S	P	T2DM	SC	12	3	control	75	0.413		24.47 ± 3.06						
								LGID	75	0.467		24.92 ± 3.01					55	
Hockaday 1978[80]	UK	S	P	T2DM	SC	52	2	control	21	0.429	57.5 ± 9.6	33.4 ± 4.2	1436	22	17	61	30	
								LGID	24	0.542	56 ± 9.4	34.2 ± 8.7	1442	22	18	59	29	
Hu 2018[81]	China	S	P	PreD	SC	24	3	control	39	0.487	50		1500	20	26	54		
								LCD	54	0.407	53		1500	20	40	40		
Huang 2016[82]	China	S	P	T2DM	SC	24	3	control	31	0.452	50.4 ± 3.2	25.9 ± 2.9		15	25	60		
								LCD	29	0.517	51.9 ± 4.2	25.9 ± 4		20	40	40		
Ikem 2007[83]	Nigeria	S	P	T2DM	SC	8	2	control	40	0.350	67.43 ± 8.43	25.79 ± 2.86						
								LGID	40	0.300	67.84 ± 8.71	25.92 ± 2.63						
Iqbal 2010[84]	USA	S	P	T2DM	SC	104	2	control	17	0.412	58.2 ± 8.8	24.5 ± 3.4		20	20	60		
								fiber	35	0.543	57.6 ± 6.3	23.8 ± 3.3		20	20	60	40+	
Itsopoulos 2011[85]	Australia	S	X	T2DM	SC	12	4	CR	74	0.054	60 ± 9.5	36.9 ± 5.3	1574	18	34	47	15	
								LCD	70	0.157	60 ± 8.9	38.1 ± 5.5	1610	17	34	48	14	
Jenkins 2008[86]	Canada	S	P	T2DM	L	24	3	control	27	0.407	59	30.7 ± 4.9	1787	18	32	46		
								Med	27	0.407	59	30.7 ± 4.9	2229	14	39	44		
Jimenez-Cruz 2003[87]	Mexico	S	X	T2DM	H	6	2	control	104	0.394	61 ± 9	31.2 ± 5.8	1690	21	31	48	84	
								LGID	106	0.387	60 ± 10	30.6 ± 6	1706	21	33	44	70	
Jönsson 2009[88]	Sweden	S	X	T2DM	SC	12	2	control	14	0.571	59 ± 9	29.6 ± 5.8	1561	18	20	64	56	
								LGID	14	0.571	59 ± 9	29.6 ± 5.8	1422	21	23	60	44	34
Kahlleova 2011[89]	Czech	S	P	T2DM	SC	24	4	control	13	0.231	64 ± 6	30 ± 7	1878	20	34	42	55	
								Paleo	13	0.231	64 ± 6	30 ± 7	1581	24	39	32	50	21
Krebs 2012[90]	New Zealand	M	P	T2DM	L	104	2	control	37	0.514	57.7 ± 4.9	35 ± 4.6	1795	18	37	45	21	
								VD	37	0.541	54.6 ± 7.8	35.1 ± 6.1	1736	16	37	50	25	
Lasa 2014[91]	Spain	M	P	T2DM	SC	52	2	control	150	0.656	58 ± 9.2	36.7 ± 6.4	1695	20	30	48	24	
								HPD	144	0.541	57.7 ± 9.9	36.6 ± 6.7	1714	21	33	46	23	
Lee 2016[92]	South Korea	S	P	T2DM	SC	12	2	control	67	0.522	67.2 ± 6.8	29.8 ± 2.8	2198	17	39	41		
								Med	74	0.608	67.4 ± 6.3	29.4 ± 2.9	2463	17	42	39		
Li 2011[95]	China	S	P	T2DM	SC	24	2	Med	50	0.680	67.1 ± 4.8	30.1 ± 3.1	2479	17	44	37		
								VD	47	0.745	58.3 ± 7	23.1 ± 2.4	1560	17	20	64	25	
Li 2021[93]	China	S	P	T2DM	SC	24	2	control	46	0.870	57.5 ± 7.7	23.9 ± 3.4	1496	15	19	72	34	
								LGID	78		51.8 ± 6.2		15	25	60			
Li 2022[94]	China	S	P	T2DM	SC	12	3	control	78		51.8 ± 6.2		15	25	60			
								LCD	38	0.447	44.62 ± 1.3	35.38 ± 6.27					60	
Liu 2011[97]	China	S	P	T2DM	H	12	3	control	38	0.474	44.53 ± 1.28	35.41 ± 6.25						
								LGID	38		37.1 ± 14.02	29.75 ± 6.07	1500	16	12	73		
Liu 2016[96]	China	S	P	T2DM	L	12	3	control	29		36.5 ± 13.67	29.04 ± 5.81	1500	16	78	11		
								LCD	24									
								control	56									
								LGID	40									
								control	30	0.500	49.7 ± 5.48	21.17 ± 1.37	1800	17	29	54		
								control	31	0.484	50.2 ± 6.12	21.42 ± 1.34	1800	17	29	54		

Study Information				Intervention				Arms and characteristics										
Basic Information		Type	Objective	RoB	Duration (week)	Intensity <sup>a</sup>	Arm	Size	Participants <sup>b</sup>				Nutrition Intake <sup>c</sup>					
Study ID	Origin								Sex ratio	Age (years)	BMI (kg/m <sup>2</sup> )	TEI	Pr	Fat	CHO	GI	fiber	
Liu 2020[98]	China	S P	T2DM	SC	4	3	LCD	30	0.500	49.8 ± 6.02	21.72 ± 1.37	1800	28	30	40			
							LCD	31	0.516	51.9 ± 5.01	21.21 ± 1.34	1800	28	30	40			
							CR	49	0.429	66.7 ± 8.7			15	25	55			
							LCD	49	0.469	66.9 ± 8.6			20	75	5			
Lousley 1984[99]	UK	S X	T2DM	SC	6	2	fiber	11		63.45 ± 7.17		1240	23	16	65	68		
Luger 2013[100]	Austria	S P	T2DM	SC	12	2	LCD	11		63.45 ± 7.17		1240	22	44	37	13		
							control	20	0.727	63.7 ± 5.2	33.6 ± 5.3	1235	17	29	50	22		
Ma 2008[101]	USA	S P	T2DM	SC	52	2	HPD	20	0.364	61 ± 5.7	33 ± 4.2	1273	26	35	38	22		
							control	21	0.476	51 ± 8.25	35.95 ± 6.75	1779	20	43	38	80	12	
Marco-Benedi 2020[102]	Spain	S P	PreD	L	24	3	LGID	19	0.579	56.31 ± 7.85	35.58 ± 7.46	1674	20	42	38	77	12	
							control	32	0.657	54.6 ± 8.11	32.3 ± 3.7	1600	18	30	52			
McLaughlin 2007[103]	USA	S P	T2DM	SC	16	2	HPD	35	0.474	56.5 ± 8.59	33.2 ± 3.63	1600	35	30	35			
							control	15	0.400	56 ± 7	31 ± 2.4		15	45	40			
Mehling 2000[104]	Canada	S P	PreD	H	16	2	LCD	14	0.429	57 ± 7	31.4 ± 2.4		15	25	60			
							control	11	0.818	58.8 ± 13.27	29.4 ± 7.3	1714	17	28	53	83	23	
Mohammadi 2017[105]	Iran	S P	T2DM	SC	10	2	LGID	13	0.769	55.2 ± 10.82	29.7 ± 4.33	1695	19	25	55	76	36	
							LCD	11	0.818	6.88 ± 13.27	30.6 ± 5.64	1894	16	36	47	82	24	
Mollentze 2019[106]	South Africa	S P	T2DM	H	24	3	control	15	1.000	49.28 ± 7.75	32.45 ± 2.34	1787	12	40	48			
							CR	15	1.000	49.63 ± 9.57	34.57 ± 5.62	1595	14	41	45			
Nicholson 1999[107]	USA	S P	T2DM	SC	12	4	control	7	1.000	54.53 ± 6.48	40.1 ± 6.46	2477						
							CR	9	1.000	55.64 ± 7.72	41.3 ± 4.41	2091						
Ning 2020[108]	China	S P	T2DM	SC	52	2	control	4	0.500	60		1526	18	31	51	20		
							VD	7	0.429	51		1409	14	11	75	26		
Parker 2002[109]	Australia	S P	T2DM	SC	8	4	control	31	0.452	57.63 ± 9.55	34.87 ± 3.25	1500			60			
							LCD	31	0.419	57.52 ± 9.13	34.82 ± 3.16	1500	20	50	30			
Pavithran 2020a[110]	India	S P	T2DM	SC	24	3	control	28	0.643	62.08		1543	16	26	55	28		
							HPD	26	0.654	60.32		1587	28	28	42	24		
Pavithran 2020b[111]	India	S P	T2DM	H	24	3	control	18	0.333	52 ± 7.7	27.25 ± 2.72							
							LGID	18	0.500	52 ± 7.7	26.81 ± 5.04					45		
Pedersen 2014[112]	Australia	S P	T2DM	SC	52	3	control	40	0.325	51.93 ± 7.43	26.75 ± 3.29	1450	16	21	66			
							LGID	40	0.375	54.43 ± 7.57	26.4 ± 3.03	1511	16	24	62	45		
Perna 2019[113]	Italy	S P	T2DM	SC	13	3	control	33	0.303	61	35 ± 4.6	1666	21	34	11			
							HPD	31	0.323	58	36 ± 6.12	2005	26	35	39			
Rizkalla 2004[114]	France	S X	T2DM	SC	4	2	control	9	0.556	67.78 ± 5.87	32.41 ± 2.91	1600	18	23	59			
							LCD	8	0.750	59.5 ± 9.48	30.3 ± 2.13	1600	22	46	32			
Rock 2014[115]	USA	M P	T2DM	SC	52	4	control	12	0.000	54 ± 6.93	31 ± 3.46	2291	20	37	38	71		
							LGID	12	0.000	54 ± 6.93	31 ± 3.46	2222	21	37	36	39		
Ruggenenti 2017[116]	Italy	S P	T2DM	L	24	3	control	67	0.473	55.5 ± 9.2	36.2 ± 4.3		20	20	60			
							HFD	66	0.481	57.3 ± 8.6	36.2 ± 4.7		25	30	45			
Ruggenenti 2022[117]	Italy	S P	T2DM	L	104	2	control	36	0.289	59.5 ± 7.1	29.6 ± 3.8	1760	18	34	48			
							CR	34	0.194	60.2 ± 7.2	30 ± 3.9	1571	20	36	44			
Saslow 2014/7[118, 119]	USA	S P	T2DM	L	52	2	control	50	0.180	62.8 ± 8.7	32.1 ± 3.1	1783	17	43	39	21		
							CR	53	0.245	64.9 ± 7.5	32.3 ± 3.7	1592	18	43	39	20		
Sato 2017[120]	Japan	S P	T2DM	SC	24	2	control	16	0.889	55.1 ± 13.5	36.9 ± 6.93	1681	16	40	36			
							LCD	14	0.563	64.8 ± 7.7	35.9 ± 6.84	1535	25	62	19			
Shen 2021[121]	China	S P	T2DM	SC	8	2	LCD	30	0.233	60.5 ± 10.5	27.27 ± 3.9	1371	19	34	43			
							CR	32	0.250	58.4 ± 10	27.11 ± 4.27	1605	16	29	49			
Shige 2000[122]	Australia	S P	T2DM	SC	12	3	control	46	0.435	61.78 ± 7.05	23.91 ± 2.12					55		
							LGID	46	0.391	62.11 ± 6.71	24.04 ± 2.19							
Skytte 2019[123]	Denmark	S X	T2DM	H	6	3	control	12		57.5 ± 11.8	32.6 ± 4.7	1541	17	9	73			
							HFD	12		58.1 ± 9	33.1 ± 2.8	1596	18	32	50			
Stentz 2016[124]	USA	S P	PreD	H	24	4	control	28	0.286	64 ± 7.7	30.1 ± 5.2		17	33	50			
							LCD	28	0.286	64 ± 7.7	30.1 ± 5.2		30	40	30			
Sun 2007[125]	China	S P	T2DM	SC	4	4	control	12	0.019	41.1 ± 5.89	37.4 ± 5.89		15	30	55			
							HPD	12	0.250	43.1 ± 4.5	40.5 ± 6.24		30	30	40			
Sun 2020[126]	China	S X	T2DM	SC	4	4	control	42	0.500	68.6 ± 7.3	25.32 ± 2.7	1471				77		
							LGID	42	0.500	68.6 ± 7.3	25.32 ± 2.7	1493				55		
Tang 2021[127]	China	S P	T2DM	SC	12	3	control	30	0.500	57.9 ± 10.4			30	45	25			
							LCD	30	0.467	57.6 ± 10.3			20	25	55			
Tay 2015[128]	China	S P	T2DM	SC	12	3	control	45	0.444	40.18 ± 6.32					60			
							LCD	45	0.467	40.25 ± 6.26		1600			30			
Thomsen 2022[129]	Australia	S P	T2DM	L	52	4	control	57	0.491	58 ± 7	35.1 ± 4.1	1700	17	30	53			
							LCD	58	0.362	58 ± 7	34.2 ± 4.5	1700	28	58	14			
Uusitupa 1993[130]	Denmark	S P	T2DM	L	6	4	control	33	0.545	67 ± 8.8	33.2 ± 5.1	2044	17	33	50	48		
							LCD	34	0.412	66.4 ± 6.9	33.6 ± 4.6	2058	30	40	30	36		
Visek 2014[131]	Finland	S P	T2DM	SC	52	2	control	46	0.391	54.16 ± 6.45	33.21 ± 4.78	1713						
							CR	40	0.475	52.13 ± 6.61	33.88 ± 5.51	1628						
Walker 1995[132]	Czech	S X	T2DM	H	12	2	control	20	0.400	62.7 ± 5.8	32 ± 4.2	1745	18	41	37	68	18	
							LGID	20	0.400	62.7 ± 5.8	32 ± 4.2	1676	18	38	38	49	18	
Wang 2009a[133]	Australia	S X	T2DM	SC	12	2	control	24	0.625	58.3 ± 10.29	29.2 ± 3.43	1506	24	23	50	34		
							HFD	24	0.625	58.3 ± 10.29	29.2 ± 3.43	1554	22	36	40	25		
Wang 2009b[136]	China	S P	T2DM	SC	12	2	control	53	0.528	50.1 ± 5.2			15	25	60			
							LGID	56	0.536	49.1 ± 5.6			15	25	60	55		
Wang 2015[135]	China	S P	T2DM	SC	24	2	control	20		56.1 ± 1.3	30.23 ± 0.34	1800	15	25	60			
							LCD	20		57.3 ± 1.2	30.28 ± 0.39	1800	30	50	20			
Wang 2018[134]	China	S P	T2DM	SC	24	2	control	50	0.360	71.8 ± 10.6	26.05 ± 2.82		20	25	55			
							LGID	50	0.400	70.5 ± 10.4	25.32 ± 4.01							
							control	25	0.480	61.2 ± 11.71	24.62 ± 5.17	1732	18	26	56			

Study Information					Intervention				Arms and characteristics									
Basic Information		Type	Objective	RoB	Duration (week)	Intensity <sup>a</sup>	Arm	Size	Participants <sup>b</sup>				Nutrition Intake <sup>c</sup>					
Study ID	Origin								Sex ratio	Age (years)	BMI (kg/m <sup>2</sup> )	TEI	Pr	Fat	CHO	GI	fiber	
Watson 2016[137]	Australia	S	P	T2DM	L	12	4	LCD	24	0.458	66.79 ± 9.12	24.29 ± 3.36	1808	19	42	39		
								control	29	0.448	55 ± 8	34.4 ± 4.7	1421	21	22	50	29	
								HPD	32	0.469	54 ± 8	34.3 ± 5.4	1490	29	30	35	25	
Westman 2008[138]	USA	S	P	T2DM	H	24	2	LGID	29	0.793	50 ± 8.5	37.9 ± 6	1335	20	36	44		
Wolever 1992[139]	Canada	S	X	T2DM	SC	6	4	LCD	21	0.667	51.2 ± 6.1	37.8 ± 6.7	1550	28	59	13		
								control	6	0.500	63 ± 9.8	32.1 ± 5.88	1388	20	23	57	86	33
Wolever 2008[140]	Canada	S	P	T2DM	SC	52	4	LGID	6	0.500	63 ± 9.8	32.1 ± 5.88	1388	20	23	57	58	
								control	48	0.500	60.4 ± 7.93	30.1 ± 4.33	1890	20	31	47	63	21
								LGID	55	0.661	60.6 ± 7.48	31.6 ± 4.49	1800	21	27	52	55	36
Wu 2020[141]	China	S	P	T2DM	SC	12	2	LCD	53	0.463	58.6 ± 8.82	31.1 ± 4.41	2020	19	40	39	59	
								control	52	0.442	53.03 ± 6.74	24.28 ± 3.25	1764	17	33	53		
								LGID	52	0.462	53.16 ± 6.9	24.53 ± 3.12	1679	19	33	51		
Xue 2020[142]	China	S	P	T2DM	SC	24	3	control	40	0.475	60.01 ± 2.54	25.91 ± 1.48						
								Med	40	0.425	55.23 ± 5.99	25.98 ± 1.72		15	25	60		
Yamada 2014[143]	Japan	S	P	T2DM	SC	24	2	CR	12	0.583	63.2 ± 10.2	27 ± 3	1610	17	32	51		
Ye 2021[144]	China	S	P	T2DM	SC	12	3	LCD	12	0.417	63.3 ± 13.5	24.5 ± 4.3	1634	25	45	30		
								control	50		67 ± 1.3							
Yu 2020[145]	China	S	P	T2DM	SC	12	3	LGID	50		68 ± 0.9						83	
								control	150	0.387	59.98 ± 4.34	21.22 ± 3.34					69	
Zahedi 2021[146]	Iran	S	P	T2DM	SC	24	2	LGID	150	0.407	60.01 ± 4.58	21.25 ± 3.44						
								control	123	0.772	57.8 ± 8.9	31.21 ± 2.49						
								Med	105	0.771	56.8 ± 9.5	30.14 ± 3.21						
Zhao 2018[147]	China	S	P	T2DM	SC	8	2	control	40	0.275	60 ± 3			15	25	60		
								LGID	40	0.325	59.1 ± 3.5					55		
Zheng 2015[148]	China	S	P	T2DM	SC	8	2	control	37	0.459	59.8 ± 7.2	23.9 ± 2.7		15	25	60		
								LGID	37	0.405	60.1 ± 6.7	24.1 ± 2.9				55		
Zhou 2011[149]	China	S	P	T2DM	SC	12	3	control	31	0.581		23.47 ± 3.2						
								LGID	31	0.710		24.31 ± 3.22						

<sup>a</sup> Intensity was defined as: 1 = no intervention, 2 = only nutrition consultations or group discussion; 3 = provide detailed menus; 4 = provide prepared/prepackaged foods; 5 = metabolic wards.

<sup>b</sup> Age and BMI were presented as mean ± standard deviation. The sex ratio was female percentage.

<sup>c</sup> Macronutrients (protein, fat and carbohydrate) were presented as the percentage of total energy intake (TEI%). The units of total energy intake and fiber were kcal/d and g/d, respectively.

S, single-center; M, multicenter; P, parallel; X, crossover; T2DM, type 2 diabetes mellitus; PreD, prediabetes; RoB, risk of bias; H, high; SC, some concerns; L, low; CR, caloric restriction; DASH, Dietary Approaches to Stop Hypertension; fiber, high-fiber diet; HFD, high-fat diet; HPD, high-protein diet; LCD, low-carbohydrate diet; LGID, low-glycemic-index diet; Med, Mediterranean diet; Paleo, Paleolithic diet; VD, vegetarian, vegan or plant-based diet; BMI, body mass index; TEI, total energy intake; Pr, protein; CHO, carbohydrate; GI, glycemic index. Data of nutrition intake were either prescribed or estimated from the mean of reported values from 24-hour self-reported dietary records. A 60-kg average individual or 2000-kcal average TEI was used for nutrition intake estimation if needed.

### 3.2 Risk of Bias Assessment

The overall risk of bias of eligible studies was acceptable, but trials of some patterns (i.e., fiber and DASH) had a relatively high risk of bias (Table 1). 15.9% of studies were at high risk of bias, while 12.1% were at low risk and the left were of some concerns (Figure 2). Notably, the risk of bias of crossover RCTs was significantly higher than parallel ones (Mann-Whitney  $U = 978.00$ ,  $P_{0.05/2} = 0.006$ ), mainly due to the period and carryover effects. Detailed risk of bias ratings of each domain is displayed in File S6.

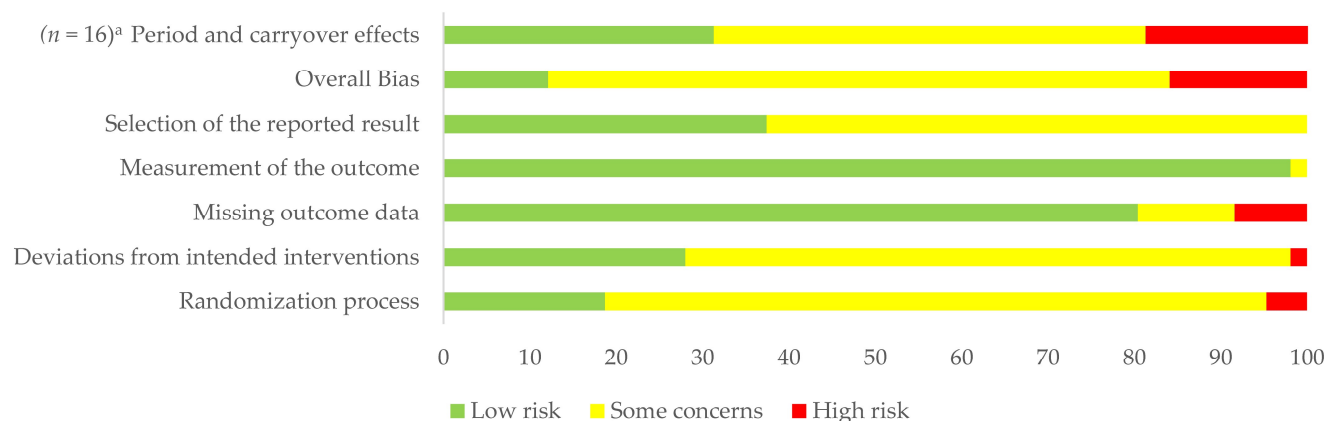
### 3.3 Main Outcomes

The number of nodes and comparisons varied among outcomes (Figure 3 and File S7). File S8 presented all league tables and cumulative ranking curves; File S9 showed forest plots with heterogeneity and inconsistency tests of all outcomes.

#### 3.3.1 Glycemic Control

For glycemic control, high-fiber diet (fiber) was ranked as the best pattern for reducing FPG (MD -1.3 mmol/L, 95% CrI -2.3 to -0.22, SUCRA 82.7%), followed by LGID (-0.94 mmol/L, -1.2 to -0.65, SUCRA 74.6%) and LCD (-0.82 mmol/L, -1.1 to -0.51, SUCRA 65.1%) (Figure 3A). DASH (-1.2%, -2.2 to -0.23, SUCRA 90.5%), LGID (-0.71%, -0.93 to -0.49, SUCRA 76.2%), and high-fiber diets (-0.74%, -1.5 to 0.035, SUCRA 71.2%) had the highest probability of improving HbA<sub>1c</sub> compared with control groups, but high-fiber diets did not show statistical significance (Figure 3B). The effects on reducing FPG and HbA<sub>1c</sub> were comparable.

FIns and IR were presented as PMD due to the various units reported by studies and the nature of arm-based network meta-analysis that standardized mean difference was not applicable. Effects on improving insulin-related conditions were not stable and significant due to the limited sample size. High-fiber diets achieved a mean of 21% reduction of FIns (95% CrI 5.2% to 46%) with a probability of 79.4% to be the best pattern, followed by LGID (-14%, -27% to -0.98%, SUCRA 68.3%) (Figure 3C). IR was reported as homeostatic model assessment (HOMA)1-IR and HOMA2-IR from included studies, among which HPD showed the best beneficial effects on improving IR (-22%, -37% to -7.0%, SUCRA 86.3%) (Figure 3D).



**Figure 2.** Risk of bias of included studies. <sup>a</sup> The “period and carryover effects” domain was only for crossover RCTs ( $n = 16$ ), and other domains were for all included studies ( $n = 107$ ).

### 3.3.2 Anthropometrics

CR was still one of the most effective diet patterns for weight loss (-4.1 kg, -6.1 to -2.0, SUCRA 86.8%) and WC (-4.5 cm, -7.4 to -1.8, SUCRA 82.2%), and LCD was ranked as the second (-3.0 kg, -4.3 to -1.8, SUCRA 74.3%) for weight loss and the best (-1.2 kg/m<sup>2</sup>, -1.7 to -0.74, SUCRA 81.6%) for BMI reduction (Figure 3E-G). As for blood pressure, DASH was found to be the best pattern for lowering SBP (-7.6 mmHg, -15 to -0.29, SUCRA 87.9%) and the second for DBP (-3.7 mmHg, -10 to 2.8, SUCRA 73.7%), while HPD was the most effective for DBP (-3.0 mmHg, -5.9 to -0.068, SUCRA 74.6%) with slight advantage than DASH (Figure 3I-J).

### 3.3.3 Lipid Profiles

Figure 3K-N illustrated different interventions' effects on lipid profiles comparing with control groups. LGID showed the most remarkable efficacy for lowering TC (-0.46 mmol/L, -0.62 to -0.30, SUCRA 87.5%) and LDL (-0.35 mmol/L, -0.47 to -0.24, SUCRA 86.6%), but were not of beneficial effects on HDL. Paleo was ranked as the best pattern for improving TG (-0.50 mmol/L, -1.1 to 0.13, SUCRA 83.4%), though the outcome was not statistically significant. LCD led to an average increase of 0.12 mmol/L (95% CrI 0.073 to 0.17, SUCRA 84.0%) for HDL compared to control, thus being the best intervention with a small effect size.

### 3.3.4 Attrition

Since a considerable number of studies did not report flowcharts of randomization, allocation and follow-up, we only included trials that reported a loss in at least one arm into synthesis. An attrition rate was calculated as: the attrition number divided by the product of participant number when allocation and the duration of intervention (in weeks). The meta-analysis denoted that there was no significant difference among all patterns (Figure 3H; File S8), which implied that participants' tolerance for each diet might be similar.

### 3.4. Heterogeneity and Inconsistency Test

Generally, the included dietary patterns were of moderate to high heterogeneity (Figure 3, File S9, and File S10), making the results less confident. LCD vs. control, CR vs. control, LGID vs. control, LCD vs. CR, and LGID vs. LCD were of very high heterogeneity in either direct or network comparison, while Med vs. control and HPD vs. control were with moderate heterogeneity mainly in lipid profiles. Significant inconsistency was observed in LCD vs. CR comparison in FPG, and CR-LCD-control loop of weight and LDL using node-splitting methods. The evidence of CR, LCD and LGID showed severe incoherence and inconsistency and should be interpreted prudently.

### 3.5. Meta-regression

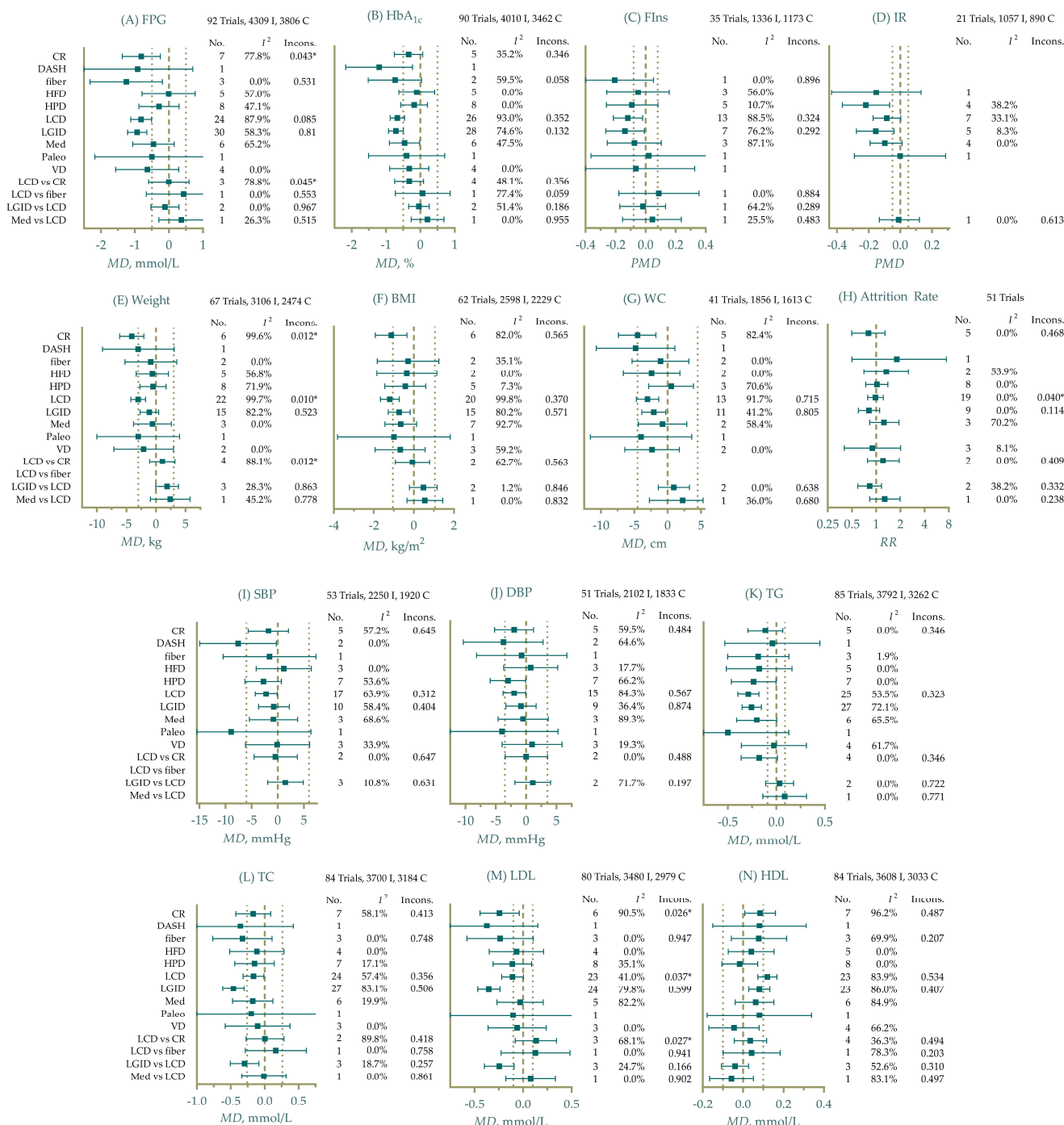
A random effect meta-regression model with one covariate and exchangeable coefficients was fitted for all included continuous outcomes. All coefficients and adjusted means were presented and summarized in File S11. Universally, the meta-regression denoted that the mean weight, BMI, and macronutrient intake significantly modified the efficacy of interventions of most outcomes. On the contrary, coefficients of the duration of intervention, study design, medication or insulin treatment, duration of disease, and sex ratio were not significant, implying that these factors may not contribute to the effectiveness. Another notable finding that coefficients of sample size and origin (from China or not) showed significance in FPG, weight, and lipid profiles indicated potential publication or selection biases.

### 3.6. Sensitivity Analysis

Weight, BMI, and TC performed well and showed robustness in the sensitivity analysis using the exclusion of each single study strategy. However, all other outcomes were not robust enough (File S12). The exclusion of Fang 2019 [68], Liu 2020 [98], Lousley 1984 [99], Tang 2021 [127], Wang 2009b [136], Wang 2015 [135], Chandalia 2000 [52], Durrer 2021 [62], Marco-Benedi 2020 [102], Wu 2020 [141] and Zahedi 2021 [146] significantly changed the SUCRA and the 95% CrI of effect size, mainly in comparisons of CR, LCD, and Med vs control, contributing to the severe heterogeneity. When testing for different models, i.e., fixed effect models or unrelated study effect models, Med, HPD, and VD showed narrower 95% CrIs and became statistically



significant for more outcome variables (see File S12 for detailed information). The number of included studies for these patterns was small, resulting in a lower weight using a random effect model. The analysis did not observe sensitivity of relative effect priors, between-study heterogeneity priors, and correlation coefficients.



**Figure 3.** Efficacy of different eating patterns on glycemic control, anthropometrics, serum lipid profiles, and comparative attrition rate. I, intervention arm; C, control arm; No., Number of direct comparisons; Incons.,  $P$  value of inconsistency test (node-splitting method); MD, mean difference; PMD, difference in percentage change from baseline; FPG, fasting plasma glucose; HbA<sub>1c</sub>, glycated hemoglobin; FIns, fasting insulin; IR, insulin resistance; BMI, body mass index; WC, waist circumference; SBP, systolic blood pressure; DBP, diastolic blood pressure; TG, triacylglycerol; TC, total cholesterol; LDL, low-density lipoprotein cholesterol; HDL, high-density lipoprotein cholesterol. Thick dashed referred to the null value, and thin dashed referred to the MCID threshold. Unless otherwise specified using “vs”, the effect sizes were experimental patterns vs control.  $I^2$  values were for network heterogeneity, including both direct and indirect comparisons.

### 3.7. Publication Bias

Potential publication bias of HbA<sub>1c</sub>, weight and BMI existed (Egger’s test  $P = 0.002$ ;  $< 0.001$ ; and  $< 0.001$ , respectively).  $P$  values for all outcomes and comparison-adjusted funnel plots were listed in File S13.

### 3.8. Quality of Evidence and Drawing Conclusions

We identified the minimal clinically important differences (MCID) for each outcome according to the MCIDs reported by previous articles [14, 36-38] (see File S14, Figure 3, and Table 2). Subsequently, the authors reached a consensus on the thresholds of moderate and large beneficial/harmful effects to draw conclusions of evidence under a partially contextualized framework provided by the GRADE workgroup (Table 2). Of all 123 pieces of evidence that compared intervention and control groups, only 49 were rated as moderate quality, and there was no evidence of high quality. At the clinical level, all of the patterns were at least not significantly worse than control diets for each outcome, but most did not show moderate to large beneficial effects. Additionally, more trivial effects were for anthropometrics, while FIns, IR, TG, and LDL were with larger beneficial effects. Because we only included five PreD-related RCTs, all the quality of evidence should be downgraded one level when applying to PreD due to the indirectness.

**Table 2.** Summary of findings

Efficacy*	Intervention	Direct Evidence		Indirect Evidence		Network Meta-analysis <sup>§</sup>		
		Mean and 95% <i>CrI</i>	Quality	Mean and 95% <i>CrI</i>	Quality	Mean and 95% <i>CrI</i>	SUCRA	Quality
FPG ( <i>MD</i> , mmol/L), MCID = 0.80								
Small (0.80 to 1.40)	fiber	-1.2 (-2.2, -0.057)	M <sup>c</sup>	-2.4 (-6.2, 1.4)	M <sup>c</sup>	-1.3 (-2.3, -0.22)	0.827	M
	LGID	-0.93 (-1.2, -0.64)	M <sup>b</sup>	-0.63 (-3.1, 1.8)	M <sup>c</sup>	-0.94 (-1.2, -0.65)	0.746	M
	DASH	-0.92 (-2.5, 0.70)	L <sup>ac</sup>			-0.92 (-2.5, 0.70)	0.639	L
	LCD	-0.72 (-1.0, -0.39)	M <sup>bb</sup>	-1.7 (-2.7, -0.63)		-0.82 (-1.1, -0.51)	0.651	M <sup>§*</sup>
	CR	-1.1 (-1.8, -0.51)	M <sup>b</sup>	0.15 (-0.93, 1.2)	VL <sup>dec</sup>	-0.81 (-1.4, -0.25)	0.645	L <sup>§</sup>
	VD	-0.63 (-1.6, 0.29)	M <sup>c</sup>			-0.64 (-1.6, 0.29)	0.524	M
	Paleo	-0.50 (-2.2, 1.2)	L <sup>cc</sup>			-0.50 (-2.2, 1.2)	0.460	L
	Med	-0.45 (-1.1, 0.15)	L <sup>bc</sup>			-0.45 (-1.1, 0.15)	0.405	L
	HPD	-0.29 (-0.88, 0.30)	L <sup>cc</sup>			-0.29 (-0.88, 0.30)	0.308	L
HFD	-0.0078 (-0.79, 0.77)	VL <sup>bcc</sup>			-0.0078 (-0.79, 0.77)	0.171	VL	
HbA <sub>1c</sub> ( <i>MD</i> , %), MCID = 0.50								
Moderate (0.80 to 1.40)	DASH	-1.2 (-2.2, -0.23)	M <sup>a</sup>			-1.2 (-2.2, -0.23)	0.905	M
Small (0.50 to 0.90)	fiber	-0.42 (-1.3, 0.41)	L <sup>cc</sup>	-2.5 (-4.5, -0.53)	L <sup>bf</sup>	-0.74 (-1.5, 0.035)	0.712	L <sup>§*</sup>
	LGID	-0.73 (-0.95, -0.52)	L <sup>bf</sup>	0.35 (-1.1, 1.8)	VL <sup>cef</sup>	-0.71 (-0.93, -0.49)	0.762	L
Trivial (0.00 to 0.50)	LCD	-0.63 (-0.85, -0.41)	L <sup>bbf</sup>	-0.95 (-1.6, -0.29)	M <sup>f</sup>	-0.67 (-0.88, -0.46)	0.721	L
	Med	-0.46 (-0.90, -0.021)	L <sup>cf</sup>			-0.46 (-0.90, -0.021)	0.521	L
	Paleo	-0.40 (-1.5, 0.71)	L <sup>cc</sup>			-0.40 (-1.5, 0.71)	0.471	L
	CR	-0.51 (-1.1, 0.033)	M <sup>c</sup>	-0.11 (-0.74, 0.53)	VL <sup>bcc</sup>	-0.34 (-0.76, 0.072)	0.412	M
	VD	-0.32 (-0.89, 0.25)	M <sup>c</sup>			-0.32 (-0.89, 0.25)	0.402	M
	HPD	-0.18 (-0.57, 0.21)	L <sup>cc</sup>			-0.18 (-0.57, 0.21)	0.272	L
	HFD	-0.11 (-0.63, 0.42)	L <sup>cc</sup>			-0.11 (-0.63, 0.42)	0.222	L
FIns ( <i>PMD</i> ), MCID = 0.08								
Large (> 0.16)	fiber	-0.22 (-0.52, 0.084)	L <sup>ac</sup>	-0.18 (-0.73, 0.37)	L <sup>cc</sup>	-0.21 (-0.46, 0.052)	0.794	L
Moderate (0.12 to 0.16)	LGID	-0.16 (-0.30, -0.025)	M <sup>bb</sup>	0.041 (-0.32, 0.40)	VL <sup>dec</sup>	-0.14 (-0.27, -0.0098)	0.683	M
Small (0.08 to 0.12)	LCD	-0.10 (-0.21, 0.0060)	L <sup>bbe</sup>	-0.27 (-0.60, 0.055)	L <sup>dc</sup>	-0.12 (-0.22, -0.02)	0.628	M <sup>†</sup>
	HPD	-0.09 (-0.26, 0.082)	M <sup>c</sup>			-0.09 (-0.26, 0.082)	0.530	M
Trivial (0.00 to 0.08)	Med	-0.075 (-0.26, 0.10)	VL <sup>bcc</sup>			-0.075 (-0.26, 0.10)	0.476	VL
	VD	-0.065 (-0.46, 0.33)	L <sup>cc</sup>			-0.065 (-0.46, 0.33)	0.467	L
	HFD	-0.050 (-0.26, 0.16)	VL <sup>bcc</sup>			-0.050 (-0.26, 0.16)	0.408	VL
	Paleo	0.021 (-0.36, 0.41)	L <sup>cc</sup>			0.021 (-0.36, 0.41)	0.306	L
IR ( <i>PMD</i> ), MCID = 0.05								
Large (> 0.12)	HPD	-0.22 (-0.37, -0.07)	M <sup>c</sup>			-0.22 (-0.37, -0.07)	0.863	M
	LGID	-0.16 (-0.28, -0.04)	M <sup>c</sup>			-0.16 (-0.28, -0.04)	0.709	M
	HFD	-0.15 (-0.43, 0.13)	M <sup>c</sup>			-0.15 (-0.43, 0.13)	0.631	M
Moderate (0.08 to 0.12)	Med	-0.098 (-0.19, 0.01)	M <sup>c</sup>			-0.098 (-0.19, 0.01)	0.482	M
	LCD	-0.086 (-0.17, 0.0030)	M <sup>c</sup>			-0.086 (-0.17, 0.0030)	0.440	M
Trivial (0.00 to 0.05)	Paleo	-0.0010 (-0.29, 0.29)	L <sup>cc</sup>			-0.0010 (-0.29, 0.29)	0.257	L
weight ( <i>MD</i> , kg), MCID = 3.00								
Small (3.00 to 5.00)	CR	-5.9 (-8.3, -3.4)	L <sup>bbf</sup>	-0.50 (-3.9, 2.9)	VL <sup>cef</sup>	-4.1 (-6.1, -2.0)	0.868	L <sup>§*</sup>
	LCD	-2.4 (-3.7, -1.0)	L <sup>bbf</sup>	-7.3 (-11, -3.8)	L <sup>bf</sup>	-3.0 (-4.3, -1.8)	0.743	L <sup>§*</sup>
Trivial (0.00 to 3.00)	DASH	-3.0 (-9.0, 3.1)	L <sup>ac</sup>			-3.0 (-9.0, 3.1)	0.654	L
	Paleo	-3.0 (-10, 4.0)	L <sup>cc</sup>			-3.0 (-10, 4.0)	0.637	L
	VD	-2.1 (-7.1, 3.0)	L <sup>cc</sup>			-2.1 (-7.1, 3.0)	0.560	L
	LGID	-1.1 (-2.8, 0.56)	VL <sup>bbcf</sup>	1.1 (-5.6, 7.8)	VL <sup>cef</sup>	-1.1 (-2.7, 0.5)	0.435	VL
	fiber	-0.88 (-5.2, 3.5)	VL <sup>acc</sup>			-0.88 (-5.2, 3.5)	0.398	VL
	HFD	-0.61 (-3.3, 2.1)	VL <sup>cef</sup>			-0.61 (-3.3, 2.1)	0.343	VL
	Med	-0.58 (-3.8, 2.6)	L <sup>cc</sup>			-0.58 (-3.8, 2.6)	0.342	L
	HPD	-0.50 (-3.3, 2.1)	VL <sup>cef</sup>			-0.50 (-3.3, 2.1)	0.318	VL
BMI ( <i>MD</i> , kg/m <sup>2</sup> ), MCID = 1.05								
Small (1.05 to 1.55)	LCD	-1.1 (-1.6, -0.59)	L <sup>bbf</sup>	-1.8 (-3.3, -0.34)	L <sup>bf</sup>	-1.2 (-1.7, -0.74)	0.816	L
	CR	-1.3 (-2.2, -0.35)	M <sup>bb</sup>	-0.71 (-2.4, 0.95)	L <sup>bc</sup>	-1.1 (-1.9, -0.34)	0.756	M
Trivial (0.00 to 1.05)	Paleo	-1.0 (-3.8, 1.8)	M <sup>c</sup>			-1.0 (-3.8, 1.8)	0.598	M
	LGID	-0.74 (-1.3, -0.16)	L <sup>bbf</sup>	-0.022 (-2.5, 2.4)	VL <sup>cef</sup>	-0.73 (-1.28, -0.18)	0.543	L
	VD	-0.69 (-1.9, 0.57)	M <sup>c</sup>			-0.69 (-1.9, 0.57)	0.519	M
	Med	-0.66 (-1.4, 0.14)	VL <sup>bbcf</sup>			-0.66 (-1.4, 0.14)	0.504	VL
	HPD	-0.43 (-1.5, 0.59)	L <sup>cc</sup>			-0.43 (-1.5, 0.59)	0.391	L
	HFD	-0.35 (-1.9, 1.1)	L <sup>cc</sup>			-0.35 (-1.9, 1.1)	0.375	L
	fiber	-0.29 (-1.8, 1.2)	L <sup>cc</sup>			-0.29 (-1.8, 1.2)	0.353	L
WC ( <i>MD</i> , cm), MCID = 4.50								
Small (4.50 to 7.00)	DASH	-4.8 (-11, 1.1)	L <sup>ac</sup>			-4.8 (-11, 1.1)	0.776	L
Trivial (0.00 to 4.50)	CR	-4.5 (-7.4, -1.8)	M <sup>bb</sup>			-4.5 (-7.4, -1.8)	0.822	M
	Paleo	-4.0 (-12, 3.6)	M <sup>c</sup>			-4.0 (-12, 3.6)	0.669	M

Efficacy*	Intervention	Direct Evidence		Indirect Evidence		Network Meta-analysis <sup>‡</sup>				
		Mean and 95% <i>CrI</i>	Quality	Mean and 95% <i>CrI</i>	Quality	Mean and 95% <i>CrI</i>	SUCRA	Quality		
	LCD	-2.8 (-4.7, -1.0)	M <sup>bb</sup>	-4.2 (-11, 2.8)	M <sup>c</sup>	-3.0 (-4.7, -1.3)	0.653	M		
	HFD	-2.4 (-6.6, 1.8)	M <sup>c</sup>			-2.4 (-6.6, 1.8)	0.539	M		
	VD	-2.3 (-6.4, 1.8)	M <sup>c</sup>			-2.3 (-6.4, 1.8)	0.534	M		
	LGID	-2.1 (-4.0, -0.17)	M <sup>c</sup>			-1.2 (-8.0, 5.6)	VL <sup>dec</sup>	-2.1 (-3.9, -0.27)	0.499	M
	fiber	-1.1 (-5.3, 3.2)	L <sup>ec</sup>			-1.1 (-5.3, 3.2)	0.364	L		
	Med	-0.77 (-4.4, 2.8)	L <sup>ec</sup>			-0.77 (-4.4, 2.8)	0.315	L		
	HPD	0.53 (-2.8, 3.9)	VL <sup>bcc</sup>			0.53 (-2.8, 3.9)	0.156	VL		
SBP ( <i>MD</i> , mmHg), MCID = 6.00										
Small (6.00 to 10.00)	Paleo	-8.9 (-24, 6.4)	M <sup>c</sup>			-8.9 (-24, 6.4)	0.807	M		
Trivial (0.00 to 6.00)	DASH	-7.6 (-15, -0.29)	M <sup>a</sup>			-7.6 (-15, -0.29)	0.879	M		
	HPD	-2.7 (-6.3, 0.71)	L <sup>be</sup>			-2.7 (-6.3, 0.71)	0.634	L		
	LCD	-1.9 (-4.1, 0.38)	L <sup>be</sup>	-5.5 (-12, 1.3)	L <sup>de</sup>	-2.2 (-4.3, -0.10)	0.594	M <sup>†</sup>		
	CR	-2.3 (-6.8, 2.1)	L <sup>be</sup>	-0.12 (-8.1, 8.1)	L <sup>ec</sup>	-1.8 (-5.7, 2.0)	0.515	L		
	fiber	-1.6 (-10, 7.3)	L <sup>ec</sup>			-1.6 (-10, 7.3)	0.477	L		
	Med	-0.82 (-5.4, 3.8)	L <sup>ec</sup>			-0.82 (-5.4, 3.8)	0.401	L		
	LGID	-0.92 (-4.0, 2.3)	VL <sup>bcc</sup>	3.6 (-6.7, 14)	L <sup>ec</sup>	-0.76 (-3.7, 2.2)	0.385	VL		
	VD	-0.11 (-6.2, 6.1)	L <sup>ec</sup>			-0.11 (-6.2, 6.1)	0.339	L		
	HFD	1.2 (-4.1, 6.4)	L <sup>ec</sup>			1.2 (-4.1, 6.4)	0.211	L		
DBP ( <i>MD</i> , mmHg), MCID = 3.50										
Small (3.50 to 7.00)	Paleo	-4.0 (-13, 5.3)	M <sup>c</sup>			-4.0 (-13, 5.3)	0.708	M		
Trivial (0.00 to 3.50)	DASH	-3.7 (-10, 2.8)	VL <sup>abc</sup>			-3.7 (-10, 2.8)	0.737	VL		
	HPD	-3.0 (-5.9, -0.068)	M <sup>b</sup>			-3.0 (-5.9, -0.068)	0.746	M		
	CR	-2.6 (-6.4, 1.1)	L <sup>be</sup>	0.15 (-6.7, 7.0)	L <sup>ec</sup>	-2.0 (-5.2, 1.2)	0.610	L		
	LCD	-2.0 (-3.9, 0.033)	L <sup>be</sup>	-3.7 (-9.3, 1.9)	L <sup>be</sup>	-2.0 (-3.8, -0.069)	0.627	M <sup>†</sup>		
	LGID	-0.49 (-3.1, 2.1)	L <sup>ec</sup>	0.18 (-8.2, 8.7)	L <sup>ec</sup>	-0.83 (-3.3, 1.7)	0.440	L		
	fiber	-0.73 (-8.2, 6.7)	L <sup>ec</sup>			-0.73 (-8.2, 6.7)	0.448	L		
	Med	-0.48 (-4.6, 3.7)	VL <sup>bbee</sup>			-0.48 (-4.6, 3.7)	0.400	VL		
	HFD	0.77 (-3.7, 5.2)	L <sup>ec</sup>			0.77 (-3.7, 5.2)	0.255	L		
	VD	0.98 (-3.9, 5.9)	L <sup>ec</sup>			0.98 (-3.9, 5.9)	0.243	L		
TG ( <i>MD</i> , mmol/L), MCID = 0.09										
Large (> 0.25)	Paleo	-0.50 (-1.1, 0.13)	M <sup>c</sup>			-0.50 (-1.1, 0.13)	0.834	M		
Moderate (0.15 to 0.25)	LCD	-0.26 (-0.38, -0.14)	M <sup>b</sup>	-0.45(-0.81, -0.094)	H	-0.29 (-0.40, -0.18)	0.758	M		
	LGID	-0.26 (-0.35, -0.15)	M <sup>b</sup>			-0.26 (-0.35, -0.15)	0.674	M		
	HPD	-0.23 (-0.46, -0.0030)	M <sup>c</sup>			-0.23 (-0.46, -0.0030)	0.615	M		
	Med	-0.20 (-0.41, 0.0050)	L <sup>be</sup>			-0.20 (-0.41, 0.0050)	0.548	L		
	fiber	-0.19 (-0.50, 0.13)	L <sup>ac</sup>			-0.19 (-0.50, 0.13)	0.517	L		
	HFD	-0.18 (-0.52, 0.16)	M <sup>c</sup>			-0.18 (-0.52, 0.16)	0.499	M		
	CR	-0.18 (-0.41, 0.048)	M <sup>c</sup>	0.0026(-0.30, 0.31)	L <sup>ec</sup>	-0.11 (-0.29, 0.066)	0.361	M		
Small (0.09 to 0.15)	DASH	-0.040 (-0.53, 0.45)	VL <sup>acc</sup>			-0.040 (-0.53, 0.45)	0.310	VL		
Trivial (0.00 to 0.09)	VD	-0.024 (-0.36, 0.31)	VL <sup>bcc</sup>			-0.024 (-0.36, 0.31)	0.246	VL		
TC ( <i>MD</i> , mmol/L), MCID = 0.26										
Moderate (0.40 to 0.52)	LGID	-0.48 (-0.64, -0.31)	M <sup>bb</sup>	-0.18 (-1.0, 0.69)	L <sup>ec</sup>	-0.46 (-0.62, -0.30)	0.875	M		
Small (0.26 to 0.40)	DASH	-0.36 (-1.1, 0.42)	VL <sup>acc</sup>			-0.36 (-1.1, 0.42)	0.647	VL		
	fiber	-0.29 (-0.79, 0.21)	M <sup>c</sup>	-0.47 (-1.4, 0.51)	M <sup>c</sup>	-0.33 (-0.76, 0.11)	0.675	M		
Trivial (0.00 to 0.26)	Paleo	-0.20 (-1.3, 0.87)	L <sup>ec</sup>			-0.20 (-1.3, 0.87)	0.500	L		
	Med	-0.18 (-0.47, 0.12)	M <sup>c</sup>			-0.18 (-0.47, 0.12)	0.483	M		
	CR	-0.23 (-0.53, 0.074)	L <sup>be</sup>	0.027 (-0.52, 0.58)	L <sup>ec</sup>	-0.17 (-0.43, 0.089)	0.472	L		
	LCD	-0.12 (-0.29, 0.049)	L <sup>be</sup>	-0.35 (-0.80, 0.11)	L <sup>de</sup>	-0.17 (-0.32, -0.012)	0.470	M <sup>†</sup>		
	HPD	-0.15 (-0.44, 0.14)	M <sup>c</sup>			-0.15 (-0.44, 0.14)	0.439	M		
	HFD	-0.12 (-0.52, 0.28)	L <sup>ec</sup>			-0.12 (-0.52, 0.28)	0.393	L		
	VD	-0.11 (-0.58, 0.37)	L <sup>ec</sup>			-0.11 (-0.58, 0.37)	0.386	L		
	LDL ( <i>MD</i> , mmol/L), MCID = 0.10									
	Moderate (0.25 to 0.40)	DASH	-0.37 (-0.89, 0.15)	L <sup>ac</sup>			-0.37 (-0.89, 0.15)	0.773	L	
Small (0.10 to 0.25)	LGID	-0.37 (-0.48, -0.25)	M <sup>b</sup>	-0.19 (-0.83, 0.45)	L <sup>ec</sup>	-0.35 (-0.47, -0.24)	0.866	M		
	CR	-0.39 (-0.62, -0.15)	M <sup>bb</sup>	0.096 (-0.26, 0.46)	L <sup>ec</sup>	-0.24 (-0.44, -0.039)	0.694	L <sup>§</sup>		
	fiber	-0.24 (-0.62, 0.14)	M <sup>c</sup>	-0.21 (-1.1, 0.65)	L <sup>ec</sup>	-0.24 (-0.35, 0.21)	0.648	M		
	HPD	-0.11 (-0.31, 0.088)	M <sup>c</sup>			-0.11 (-0.31, 0.088)	0.443	M		
	LCD	-0.058 (-0.18, 0.062)	M <sup>c</sup>	-0.43(-0.75, -0.099)	H	-0.11 (-0.22, 0.0040)	0.444	M <sup>§*</sup>		
Trivial (0.00 to 0.10)	Paleo	-0.10 (-0.92, 0.72)	L <sup>ec</sup>			-0.10 (-0.92, 0.72)	0.454	L		
	HFD	-0.067 (-0.35, 0.21)	L <sup>ec</sup>			-0.067 (-0.35, 0.21)	0.361	L		
	VD	-0.060 (-0.36, 0.24)	L <sup>ec</sup>			-0.060 (-0.36, 0.24)	0.351	L		
	Med	-0.029 (-0.27, 0.21)	VL <sup>bbee</sup>			-0.029 (-0.27, 0.21)	0.284	VL		
HDL ( <i>MD</i> , mmol/L), MCID = 0.10										
Small (0.10 to 0.15)	LCD	0.11 (0.056, 0.16)	M <sup>bb</sup>	0.15 (0.027, 0.27)	M <sup>b</sup>	0.12 (0.073, 0.17)	0.840	M		
Trivial (0.00 to 0.10)	CR	0.10 (0.0092, 0.19)	M <sup>bb</sup>	0.044(-0.095, 0.18)	VL <sup>bdc</sup>	0.084 (0.0080, 0.16)	0.657	M		
	DASH	0.081 (-0.15, 0.31)	VL <sup>acc</sup>			0.081 (-0.15, 0.31)	0.593	VL		
	LGID	0.083 (0.028, 0.14)	M <sup>bb</sup>	-0.025 (-0.28, 0.23)	L <sup>ec</sup>	0.080 (0.028, 0.13)	0.640	M		
	Paleo	0.080 (-0.18, 0.34)	L <sup>ec</sup>			0.080 (-0.18, 0.34)	0.584	L		
	fiber	0.026 (-0.13, 0.19)	VL <sup>acc</sup>	0.22 (-0.041, 0.49)	L <sup>de</sup>	0.077 (-0.059, 0.22)	0.609	VL		
	Med	0.062 (-0.039, 0.16)	L <sup>bbee</sup>			0.062 (-0.039, 0.16)	0.547	L		
	HFD	0.040 (-0.074, 0.15)	M <sup>ec</sup>			0.040 (-0.074, 0.15)	0.447	M		
	HPD	-0.017 (-0.11, 0.072)	L <sup>ec</sup>			-0.017 (-0.11, 0.072)	0.200	L		
	VD	-0.045 (-0.17, 0.079)	VL <sup>bcc</sup>			-0.045 (-0.17, 0.079)	0.139	VL		

<sup>†</sup> We only identified limitations when more than half of the included studies providing the evidence were at high risk of bias. For inconsistency, an  $I^2$  value of greater than 75% was considered severe inconsistent. Even if meta-regression was done, we were not confident to explain heterogeneity using covariates, so every comparison with  $I^2$  greater than or near 50% was considered inconsistent. Indirectness from population, intervention or outcomes was not detected for T2DM because of the aims of this study; however, if applying evidence to PreD populations, indirectness should exist. Intransitivity was determined if the effect size and the SUCRA seemed very unstable in the sensitivity analysis. Unstable SUCRA may denote differences in characteristics among studies that could modify effects in indirect comparison. Imprecision was determined if 95% CrI contained a null value, or the effect size showed statistical instability (change of significance) in the meta-regression and sensitivity analysis. Severe imprecision referred to those whose CrI was divided by the null value into two parts with a comparable ratio, or the mean was very trivial, close to null. Incoherence was determined if the comparisons showed significant inconsistency (the term in network meta-analysis). The network quality of evidence was downgraded if incoherence of different directions (i.e., positive and negative) existed. All ratings of the factors were agreed by three authors (B.-T.Z., F.-D.L., and J.-W.D.).

## 4. Discussion

In this study, we evaluated the comparative efficacy of eleven eating patterns (ten experimental and one control). We identified the rankings of each pattern for glycemic control, anthropometrics, and lipid profiles. The restriction of energy intake, carbohydrates, and glycemic index (GI), as well as the intake of dietary fiber, were the most effective approaches to improve glycemic control, weight and lipid profiles of patients with T2DM/PreD, with solid and abundant evidence bases. However, the heterogeneity and the sensitivity implied the need of further studies. On the other hand, DASH, Paleolithic diets, and HPD were of satisfactory efficacy in limited outcomes and worth investigation. The meta-analysis also denoted that Mediterranean diets and VD did not act well in nearly all outcomes, mainly due to the imprecision. High-fat diets without carbohydrate restriction did not show any beneficial effects compared to control diets. Severe heterogeneity and sensitivity should be concerned when interpreting the results.

### 4.1. Energy and Macronutrients

A previous evidence basis has corroborated the efficacy of CR in weight loss, BMI and WC in patients with obesity, metabolic diseases or in healthy individuals [150, 151]. Minor beneficial effects on weight loss and reducing BMI with low and moderate quality of evidence were observed. Meanwhile, CR did not lead to greater improvement of glycemic control, blood pressure, TG, and TC compared to standard diets. Trivial effects on glycemic and lipid outcomes may result from weight loss but not the caloric restriction, since several studies have suggested that a weight loss be of tight relevance to them [152, 153]. The median TEI of the included CR arms was 1594 kcal/d (interquartile range, IQR 1572 to 1609), with a 150-to-400-kcal negative difference compared to standard diets, which was significantly lower than the prescribed (-500 kcal/d). However, the deviance did not lead to the failure of the intervention. A probable explanation was that participants might focus more on their dietary intake and weight loss to improve their diets once the intention and the belief to improve was built via consultation or menus: not only in energy intake but also in other aspects like food groups, dietary fiber, etc. The phenomena were also observed in LCD and LGID.

Carbohydrate restriction acted well in weight, HbA<sub>1c</sub>, TG, and HDL, where improving HDL was the unique advantage of LCD. Nevertheless, other types of serum lipids, i.e., TC and LDL were not improved, though the meta-regression suggested that carbohydrate intake be negatively correlated to the effectiveness of LGID and CR in modulating lipids. Similar to the CR arms, the median carbohydrate intake of the included LCD arms was 30.5% (IQR 20% to 40%), which indicated that nearly a quarter of included trials did not meet the low-carbohydrate criteria as prescribed. Nevertheless, the effect size was similar to previous systematic reviews [14], and the strict following of the instruction as well as a more intensive intervention did not enhance the effects but may even lead to a decrease, denoted by the meta-regression (File S11). Participants' motivation and intention may be an explanation: prepackaged or prepared frozen food may not be of participants' favors, so they would not adhere perfectly to the intervention, and added food to their diets.

Participants usually decreased their food intake in LCD intervention because of the increased satiety, which led to a spontaneous caloric restriction [154, 155]. Therefore, how to distinguish the effects of carbohydrate and caloric restriction in an LCD trial was always the focus, usually by introducing isocaloric arms. However, we did not find a significant between-group difference of actual energy intake in the included LCD trials, despite the limited number of trials that reported actual intake. The meta-regression also suggested that additional caloric restriction or the TEI did not significantly modify the effects of LCD in lipids, implying that carbohydrates acted as a different role in the treatment. Lastly, the combination of carbohydrate and caloric restriction may have more beneficial effects though it brought more compliance problems: in the trial Durrer 2021 [62], severe restrictions (984 kcal/d and 27%TEI carbohydrate) made all of the outcomes improve substantially.

The increased intake of protein without carbohydrate restriction (HPD) effectively improved IR, blood pressure and TG. Furthermore, protein intake was positively correlated to FPG, HbA<sub>1c</sub>, weight, and BMI improvement in meta-regression. Compared to the previous review [156], the effectiveness of HPD on FPG, HbA<sub>1c</sub> and other lipids was not observed, mainly due to the different inclusion criteria: only HPD with protein intake of more than 30% TEI and without carbohydrate restriction was included. This implied the different efficacy of protein and carbohydrate. As for HFD, no beneficial effect was detected, and fat intake negatively modified the lipid improvement. Of all five included HFD trials, three [45, 49, 122] emphasized a high-monounsaturated-fat diet, while the other two did not specify the type of fat. Despite the numerical impact of specific lipids, it remained to be evaluated whether the increased intake of monounsaturated fat or other types of fat improved or negatively affected the overall lipoprotein profile [157]. Unfortunately, the included trials were of limited sample size and did not provide sufficient data to draw a thorough interpretation.

### 4.2. Glycemic Index and Dietary Fiber

LGID and high-fiber diets emphasized more on the quality rather than the quantity of carbohydrates, compared to LCD. Effects of LGID and high-fiber diets were similar: both showed more excellent effects on FPG, HbA<sub>1c</sub>, FIns, TC, and LDL than most other



patterns, but did not significantly improve weight-related outcomes, consistent with other studies [158, 159]. Dietary GI and fiber of specific single food were not well associated [160]. However, the emphasis on lowering GI may encourage participants to increase fiber intake, because the usually recommended natural food groups in nutrition consultations can be both low in GI and high in fiber, e.g., whole grains and nuts.

A recent meta-analysis published in *the Lancet* has also denoted that dietary fiber and low-GI food were associated with a lower risk of T2DM incidence, where fiber may be a stronger protector [161]. Dietary fiber also had other benefits, e.g., lower all-cause mortality and coronary heart disease incidence [161]. Rather than a severe long-term restriction of the quantity of carbohydrates which leads to higher all-cause mortality [162], LGID and increased fiber intake can be better and sustainable approaches for the management of T2DM patients without obesity/overweight, especially with the circumstance that most people lacked fiber intake [163].

#### 4.3. Mediterranean Diets

Even if previous cohort studies and RCTs have demonstrated the efficacy of Med in T2DM management [164], our study failed to detect a significant improvement driven by Med. Except for HbA<sub>1c</sub>, IR and TG, all other outcomes were of great imprecision and trivial effects. The effect size was also more trivial than other meta-analyses [15, 165]. Nevertheless, sensitivity analysis using fixed effects models and unrelated study effects models suggested that Med significantly improved FIns, weight, BMI, blood pressure, and TC. Small sample size compared to other interventions could be the reason when using random effects models; different calculation of effect size, i.e., MD of change from baseline or of endpoint may explain the numerical differences.

Moreover, heterogeneity was detected for almost all outcomes of Med vs control comparisons. Researchers have pointed out the variance and bias of the definition of Med in different trials [166], which can cause great between-study heterogeneity and led to the low quality of evidence. Though several scales have been developed to measure the adherence to Med (e.g., MedDiet Score) [167], few trials employed it, thus not able to assess the impact of adherence to the effects of Med.

#### 4.4. DASH and Paleolithic Diets

Evidence of the efficacy of DASH and Paleo was limited and of low quality due to the sample size. As one of the recommended healthy patterns for the general population by Dietary Guidelines for Americans (DGA 2020-2025) [168], many studies have addressed its benefit in blood pressure and glycemic control [169, 170]. However, RCTs focusing on the effects of DASH in T2DM/PreD patients were rare. Only two RCTs on DASH were included, where one [40] was of high risk of bias; one trial for Paleo was eligible. This study also outlined the beneficial effects of DASH on blood pressure, TC, LDL, and HbA<sub>1c</sub>, where DASH was ranked as the most effective intervention for HbA<sub>1c</sub> with a high probability (90.5%), suggesting the potential advantage for T2DM remission. For Paleo, Jönsson T (the author of the included trial [88]) and his colleagues also quantified the improvement of leptin and introduced a scale (Paleolithic Diet Fraction) to measure the compliance, based on their trial [88, 171], which provided a basis for further studying.

Considering the lack of RCTs, a systematic review containing all eligible controlled trials or other observational studies may be better to address the efficacy of DASH and Paleo, and the effects of these patterns in the management of T2DM/PreD still need more demonstration of high quality.

#### 4.5. Vegan, Vegetarian, or Plant-based Diets

VD did not show any significant beneficial effects in the meta-analysis. Nevertheless, the mean differences of VD were similar to the previous studies [37], thus did not affect the conclusion of evidence but lowered the ratings of quality of evidence. While using fixed effects models, the effectiveness of VD on BMI, WC, and HbA<sub>1c</sub> was detected. However, moderate heterogeneity made it unreasonable to employ fixed effects models, though the small number of participants led to wider 95% CrIs when using random effect models.

Notably, the carbohydrate intake in included VD trials was relatively high (mean 65.8%TEI). The sensitivity analysis also showed a slight improvement of SUCRA in TG after excluding Lee 2016 [92], which contained about 72%TEI of carbohydrate in the intervention arm. Therefore, researchers should consider a lower carbohydrate intake when conducting VD, and the effects would promise to be more significant.

#### 4.7. Strengths and Limitations

We included more than 8000 participants and the most frequently used outcomes in the meta-analysis. Meanwhile, the summary of findings was clearly drawn following the partially contextualized framework. These could be advantages of our study. However, this study had several limitations. First, the severe heterogeneity and sensitivity lowered the quality of evidence. Second, the sample size of VD, DASH, and Paleo was limited, leading to the imprecision. Third, only five PreD trials were included, raising the indirectness when applying the evidence to the PreD population. Moreover, there was not an adequate method to compare the longitudinal dataset of different patterns, though the data of different timepoints have been extracted.

## 5. Conclusions

This systematic review provided an insight into the efficacy of different eating patterns in the management of T2DM and PreD with moderate-to-low quality evidence. Clinicians and dietitians can take the evidence into consideration when providing nutrition consultations and conducting medical nutrition therapy. However, the quality and the sensitivity of the evidence can be a barrier to clinical practice. More powerful and well-designed RCTs, as well as real-world evidence studies, are needed to draw more precise conclusions, especially for DASH and Paleolithic diets.

**Supplementary Materials:** The following supporting information can be downloaded at: [www.mdpi.com/xxx/s1](http://www.mdpi.com/xxx/s1), File S1: Full search strategy; File S2: Data extraction template; File S3: Correlation coefficients for estimation; File S4: Reason for exclusion; File S5: Fundings and conflicts of interest of included studies; File S6: Risk of bias assessment; File S7: Network plots; File S8: League tables and cumulative ranking curves; File S9: Forest plots; File S10: Heterogeneity and inconsistency test; File S11: Meta-regression; File S12: Sensitivity analysis; File S13: Publication bias; File S14: Minimal clinically important difference and thresholds for effects.

**Author Contributions:** Conceptualization, B.-T.Z. and J.-W.D.; Methodology, B.-T.Z.; Software, B.-T.Z.; Validation, H.-Q.P., F.-D.L. and Z.-Y.Y.; Formal Analysis, B.-T.Z.; Investigation, B.-T.Z. and H.-Q.P.; Resources, Y.L.; Data Curation, B.-T.Z. and Z.-Y.Y.; Writing – Original Draft Preparation, B.-T.Z. and H.-Q.P.; Writing – Review & Editing, Y.L. and F.-D.L.; Visualization, B.-T.Z.; Supervision, J.-W.D. and Y.L. All authors have read and agreed to the published version of the manuscript.

**Funding:** This research received no external funding.

**Institutional Review Board Statement:** Not applicable.

**Informed Consent Statement:** Not applicable.

**Data Availability Statement:** The data presented in this study are available in supplementary materials.

**Acknowledgments:** We acknowledge Professor Lawrence J. Cheskin from George Mason University for his kindly replying our email about the data availability of his registered trial.

**Conflicts of Interest:** The authors declare no conflict of interest.

## Appendix A

The dietary patterns included in this article were defined as:

1. Caloric restriction (CR): a more than 500-kcal negative energy balance.
2. DASH: a dietary pattern that emphasizes dietary fiber, protein, fruits rich in potassium/magnesium/calcium, vegetables, beans, legumes, whole grains, and low-fat dairy food; avoids sugar and saturated fat intake [172].
3. High-fiber diet: a total dietary fiber intake of more than 35 to 40 g/d, or 20 to 25 g/1000 kcal.
4. High-fat diet (HFD): Fat intake of more than 30% TEI with more than 40% TEI carbohydrate intake.
5. High-protein diet (HPD): 30% TEI or more protein intake with more than 40% TEI carbohydrate intake.
6. Low-carbohydrate diet (LCD): less than 40% TEI carbohydrate intake.
7. Low-glycemic-index diet (LGID): a reduced average glycemic index of all dietary intake, less than 50 to 65.
8. Mediterranean diet: a dietary pattern rich in olive oil, vegetables, cereals, legumes, nuts, seafood/fish, dairy food, and moderate red wine [166].
9. Paleolithic diet: a dietary pattern that emphasizes the intake of “lean meat, fish, fruits, root vegetables, eggs and nuts” [173], and avoids processed food.
10. Vegetarian, vegan or plant-based diet: a series of dietary patterns where most of the macronutrients were from plants and not from meat, with or without eggs, milk or other animal-derived food.

The macronutrients and food group intake can be as prescribed or as actual.

## References

- [1] International Diabetes Federation. IDF Diabetes Atlas. 10 ed. Brussels: International Diabetes Federation; 2021.
- [2] Gong Q, Zhang P, Wang J, Ma J, An Y, Chen Y, et al. Morbidity and mortality after lifestyle intervention for people with impaired glucose tolerance: 30-year results of the Da Qing Diabetes Prevention Outcome Study. *The lancet Diabetes & endocrinology*. 2019;7:452-61.
- [3] Karamanou M, Protogerou A, Tsoucalas G, Androustos G, Poulakou-Rebelakou E. Milestones in the history of diabetes mellitus: The main contributors. *World J Diabetes*. 2016;7:1-7.
- [4] American Diabetes Association Professional Practice Committee. 5. Facilitating Behavior Change and Well-being to Improve Health Outcomes: Standards of Medical Care in Diabetes—2022. *Diabetes Care*. 2021;45:S60-S82.
- [5] Sievenpiper JL, Chan CB, Dworatzek PD, Freeze C, Williams SL. Nutrition Therapy. *Can J Diabetes*. 2018;42:S64-S79.
- [6] National Institute for Health and Care Excellence. Type 2 diabetes in adults: management. 2015.
- [7] White P. Diabetes in Childhood and Adolescence. Philadelphia: Lea & Febiger; 1932.
- [8] American Diabetes Association. Standards of Medical Care for Patients With Diabetes Mellitus. *Diabetes Care*. 2003;26:s33-s50.
- [9] Lean MEJ, Leslie WS, Barnes AC, Brosnahan N, Thom G, McCombie L, et al. Durability of a primary care-led weight-management intervention for remission of type 2 diabetes: 2-year results of the DiRECT open-label, cluster-randomised trial. *The Lancet Diabetes & Endocrinology*. 2019;7:344-55.
- [10] Martínez-González MÁ, Corella D, Salas-Salvadó J, Ros E, Covas MI, Fiol M, et al. Cohort Profile: Design and methods of the PREDIMED study. *Int J Epidemiol*. 2010;41:377-85.
- [11] Mitrou PN, Kipnis V, Thiébaud ACM, Reedy J, Subar AF, Wirfält E, et al. Mediterranean Dietary Pattern and Prediction of All-Cause Mortality in a US Population: Results From the NIH-AARP Diet and Health Study. *Arch Intern Med*. 2007;167:2461-8.
- [12] Riboli E, Hunt KJ, Slimani N, Ferrari P, Norat T, Fahey M, et al. European Prospective Investigation into Cancer and Nutrition (EPIC): study populations and data collection. *Public Health Nutr*. 2002;5:1113-24.
- [13] Stevens J, Ahn K, Juhaeri, Houston D, Steffan L, Couper D. Dietary Fiber Intake and Glycemic Index and Incidence of Diabetes in African-American and White Adults: The ARIC Study. *Diabetes Care*. 2002;25:1715-21.
- [14] Goldenberg JZ, Day A, Brinkworth GD, Sato J, Yamada S, Jonsson T, et al. Efficacy and safety of low and very low carbohydrate diets for type 2 diabetes remission: systematic review and meta-analysis of published and unpublished randomized trial data. *BMJ*. 2021;372:m4743.
- [15] Schwingshackl L, Chaimani A, Hoffmann G, Schwedhelm C, Boeing H. A network meta-analysis on the comparative efficacy of different dietary approaches on glycaemic control in patients with type 2 diabetes mellitus. *Eur J Epidemiol*. 2018;33:157-70.
- [16] Pan B, Wu Y, Yang Q, Ge L, Gao C, Xun Y, et al. The impact of major dietary patterns on glycemic control, cardiovascular risk factors, and weight loss in patients with type 2 diabetes: A network meta-analysis. *J Evid Based Med*. 2019;12:29-39.
- [17] McArdle PD, Greenfield SM, Rilstone SK, Narendran P, Haque MS, Gill PS. Carbohydrate restriction for glycaemic control in Type 2 diabetes: a systematic review and meta-analysis. *Diabet Med*. 2019;36:335-48.
- [18] Higgins J, Thomas J, Chandler J, Cumpston M, Li T, Page M, et al. *Cochrane Handbook for Systematic Reviews of Interventions* version 6.2. Cochrane; 2021.
- [19] Hutton B, Salanti G, Caldwell DM, Chaimani A, Schmid CH, Cameron C, et al. The PRISMA extension statement for reporting of systematic reviews incorporating network meta-analyses of health care interventions: checklist and explanations. *Ann Intern Med*. 2015;162:777-84.
- [20] Luo D, Wan X, Liu J, Tong T. Optimally estimating the sample mean from the sample size, median, mid-range, and/or mid-quartile range. *Stat Methods Med Res*. 2018;27:1785-805.
- [21] Wan X, Wang W, Liu J, Tong T. Estimating the sample mean and standard deviation from the sample size, median, range and/or interquartile range. *BMC Med Res Methodol*. 2014;14:1-13.
- [22] Shi J, Luo D, Wan X, Liu Y, Liu J, Bian Z, et al. Detecting the skewness of data from the sample size and the five-number summary. *arXiv preprint arXiv:201005749*. 2020.
- [23] Rohatgi A. WebPlotDigitizer 4.5.
- [24] van Buuren S, Groothuis-Oudshoorn K. mice: Multivariate Imputation by Chained Equations in R. *Journal of Statistical Software*. 2011;45:1 - 67.
- [25] Sterne JA, Savović J, Page MJ, Elbers RG, Blencowe NS, Boutron I, et al. RoB 2: a revised tool for assessing risk of bias in randomised trials. *BMJ*. 2019;366.
- [26] Higgins J, Tianjing L, Jonathan S. Revised Cochrane risk of bias tool for randomized trials (RoB 2) Additional considerations for crossover trials. 2021.
- [27] van Valkenhoef G, Dias S, Ades AE, Welton NJ. Automated generation of node-splitting models for assessment of inconsistency in network meta-analysis. *Res Synth Methods*. 2016;7:80-93.
- [28] van Valkenhoef G, Lu G, de Brock B, Hillege H, Ades A, Welton NJ. Automating network meta-analysis. *Research synthesis methods*. 2012;3:285-99.
- [29] Lunn D, Spiegelhalter D, Thomas A, Best N. The BUGS project: Evolution, critique and future directions. *Stat Med*. 2009;28:3049-67.
- [30] Plummer M, Best N, Cowles K, Vines K. CODA: convergence diagnosis and output analysis for MCMC. *R News*. 2006;6:7-11.
- [31] Chaimani A, Salanti G. Using network meta-analysis to evaluate the existence of small-study effects in a network of interventions. *Res Synth Methods*. 2012;3:161-76.
- [32] Viechtbauer W. Conducting Meta-Analyses in R with the metafor Package. *Journal of Statistical Software*. 2010;36:1 - 48.
- [33] Puhan MA, Schünemann HJ, Murad MH, Li T, Brignardello-Petersen R, Singh JA, et al. A GRADE Working Group approach for rating the quality of treatment effect estimates from network meta-analysis. *BMJ : British Medical Journal*. 2014;349:g5630.
- [34] GRADE Working Group. GRADE Handbook. 2013.
- [35] Brignardello-Petersen R, Izcovich A, Rochwerf B, Florez ID, Hazlewood G, Alhazanni W, et al. GRADE approach to drawing conclusions from a network meta-analysis using a partially contextualised framework. *BMJ*. 2020;371:m3907.
- [36] Ramachandran A, Riddle MC, Kabali C, Gerstein HC. Relationship between A1C and fasting plasma glucose in dysglycemia or type 2 diabetes: an analysis of baseline data from the ORIGIN trial. *Diabetes Care*. 2012;35:749-53.
- [37] Vigiouliouk E, Kendall CWC, Kahleová H, Rahelić D, Salas-Salvadó J, Choo VL, et al. Effect of vegetarian dietary patterns on cardiometabolic risk factors in diabetes: A systematic review and meta-analysis of randomized controlled trials. *Clin Nutr*. 2019;38:1133-45.
- [38] Johnston BC, Kanters S, Bandayrel K, Wu P, Naji F, Siemieniuk RA, et al. Comparison of Weight Loss Among Named Diet Programs in Overweight and Obese Adults: A Meta-analysis. *JAMA*. 2014;312:923-33.

- [39] Al-Jazzaf B. Dietary approaches for the reduction of cardiovascular disease risk in type 2 diabetes mellitus and obesity [Ph.D.]. Ann Arbor: University of Surrey (United Kingdom); 2007.
- [40] Azadbakht L, Fard NR, Karimi M, Baghaei MH, Surkan PJ, Rahimi M, et al. Effects of the Dietary Approaches to Stop Hypertension (DASH) eating plan on cardiovascular risks among type 2 diabetic patients: a randomized crossover clinical trial. *Diabetes Care*. 2011;34:55-7.
- [41] Bahado-Singh PS, Riley CK, Wheatley AO, Boyne MS, Morrison EY, Asemota HN. High fiber Caribbean diets with low-intermediate GI improve glycemic control, cardiovascular and inflammatory indicators in overweight persons with type 2 diabetes: A randomized control study. *Current Research in Nutrition and Food Science*. 2015;3:36-45.
- [42] Barnard ND, Cohen J, Jenkins DJ, Turner-McGrievy G, Gloede L, Green A, et al. A low-fat vegan diet and a conventional diabetes diet in the treatment of type 2 diabetes: a randomized, controlled, 74-wk clinical trial. *Am J Clin Nutr*. 2009;89:1588s-96s.
- [43] Barnard ND, Cohen J, Jenkins DJ, Turner-McGrievy G, Gloede L, Jaster B, et al. A low-fat vegan diet improves glycemic control and cardiovascular risk factors in a randomized clinical trial in individuals with type 2 diabetes. *Diabetes Care*. 2006;29:1777-83.
- [44] Brand JC, Colagiuri S, Crossman S, Allen A, Roberts DC, Truswell AS. Low-Glycemic Index Foods Improve Long-Term Glycemic Control in NIDDM. *Diabetes Care*. 1991;14:95-101.
- [45] Brehm BJ, Lattin BL, Summer SS, Boback JA, Gilchrist GM, Jandacek RJ, et al. One-year comparison of a high-monounsaturated fat diet with a high-carbohydrate diet in type 2 diabetes. *Diabetes Care*. 2009;32:215-20.
- [46] Breukelman GJ, Basson AK, Djarova TG, Du Preez CJ, Shaw I, Malan H, et al. Concurrent low-carbohydrate, high-fat diet with/without physical activity does not improve glycaemic control in type 2 diabetics. *South Afr J Clin Nutr*. 2021;34:18-21.
- [47] Breukelman GJ, Basson AK, Djarova TG, Du Preez CJ, Shaw I, Shaw BS. Combination Low Carbohydrate, High Fat Diet and Physical Activity Intervention on Lipoprotein-Lipids in Type 2 Diabetics. *Asian J Sports Med*. 2019;10:1-7.
- [48] Brinkworth GD, Noakes M, Parker B, Foster P, Clifton PM. Long-term effects of advice to consume a high-protein, low-fat diet, rather than a conventional weight-loss diet, in obese adults with type 2 diabetes: one-year follow-up of a randomised trial. *Diabetologia*. 2004;47:1677-86.
- [49] Brunerova L, Smejkalova V, Potockova J, Andel M. A comparison of the influence of a high-fat diet enriched in monounsaturated fatty acids and conventional diet on weight loss and metabolic parameters in obese non-diabetic and Type 2 diabetic patients. *Diabet Med*. 2007;24:533-40.
- [50] Cao A-H, Sun L-Z, Cui J-W, Zhang X-J. [Effects of a low-carbohydrate diet and a low-fat diet on weight and glycemic control in type 2 diabetes mellitus]. *Zhongguo Quanke Yixue [Chinese General Practice]*. 2011;14:52-3; 6.
- [51] Ceriello A, Esposito K, Sala LL, Pujadas G, Nigris VD, Testa R, et al. The protective effect of the Mediterranean diet on endothelial resistance to GLP-1 in type 2 diabetes: A preliminary report. *Cardiovasc Diabetol*. 2014;13.
- [52] Chandalia M, Garg A, Lutjohann D, von Bergmann K, Grundy SM, Brinkley LJ. Beneficial effects of high dietary fiber intake in patients with type 2 diabetes mellitus. *N Engl J Med*. 2000;342:1392-8.
- [53] Chen CY, Huang WS, Chen HC, Chang CH, Lee LT, Chen HS, et al. Effect of a 90 g/day low-carbohydrate diet on glycaemic control, small, dense low-density lipoprotein and carotid intima-media thickness in type 2 diabetic patients: An 18-month randomised controlled trial. *PLoS One*. 2020;15:e0240158.
- [54] Chen X, Su H, Kunii D, Kudou K, Zhang Y, Zhao Y, et al. The Effects of Mobile-App-Based Low-Carbohydrate Dietary Guidance on Postprandial Hyperglycemia in Adults with Prediabetes. *Diabetes Ther*. 2020;11:2341-55.
- [55] Choi KM, Han KA, Ahn HJ, Lee SY, Hwang SY, Kim BH, et al. The effects of caloric restriction on fetuin-A and cardiovascular risk factors in rats and humans: a randomized controlled trial. *Clin Endocrinol (Oxf)*. 2013;79:356-63.
- [56] Coppel KJ, Kataoka M, Williams SM, Chisholm AW, Vorders SM, Mann JI. Nutritional intervention in patients with type 2 diabetes who are hyperglycaemic despite optimised drug treatment - Lifestyle over and above drugs in diabetes (LOADD) study: Randomised controlled trial. *BMJ (Online)*. 2010;341:237.
- [57] Coulston AM, Hollenbeck CB, Swislocki ALM, Reaven GM. Persistence of hypertriglyceridemic effect of low-fat high-carbohydrate diets in NIDDM patients. *Diabetes Care*. 1989;12:94-101.
- [58] Daly ME, Paisey R, Paisey R, Millward BA, Eccles C, Williams K, et al. Short-term effects of severe dietary carbohydrate-restriction advice in Type 2 diabetes--a randomized controlled trial. *Diabet Med*. 2006;23:15-20.
- [59] Davis NJ, Tomuta N, Schechter C, Isasi CR, Segal-Isaacson CJ, Stein D, et al. Comparative study of the effects of a 1-year dietary intervention of a low-carbohydrate diet versus a low-fat diet on weight and glycemic control in type 2 diabetes. *Diabetes Care*. 2009;32:1147-52.
- [60] Ding H, Shao J, Zhe W, Zhang Y. [The Application of Low Glycemic Index Diet in Nutrition Intervention to Uygur Patients with Diabetes]. *Zhongguo Manxingbing Yufang Yu Kongzhi [Chinese Journal of Prevention and Control of Chronic Diseases]*. 2010;18:123-4;8.
- [61] Ding H, Shao J, Zhe W, Zhang Y. [Application of low glycemic index diet in diabetes of Uygur and its effect on biochemical indicators]. *Yingyang Xuebao [Acta Nutrimenta Sinica]*. 2010;32:460-2.
- [62] Durrer C, McKelvey S, Singer J, Batterham AM, Johnson JD, Gudmundson K, et al. A randomized controlled trial of pharmacist-led therapeutic carbohydrate and energy restriction in type 2 diabetes. *Nat Commun*. 2021;12:5367.
- [63] Elhayany A, Lustman A, Abel R, Attal-Singer J, Vinker S. A low carbohydrate Mediterranean diet improves cardiovascular risk factors and diabetes control among overweight patients with type 2 diabetes mellitus: a 1-year prospective randomized intervention study. *Diabetes Obes Metab*. 2010;12:204-9.
- [64] Esposito K, Maiorino MI, Ciotola M, Di Palo C, Scognamiglio P, Gicchino M, et al. Effects of a Mediterranean-style diet on the need for antihyperglycemic drug therapy in patients with newly diagnosed type 2 diabetes: a randomized trial. *Ann Intern Med*. 2009;151:306-14.
- [65] Fabricatore AN, Wadden TA, Ebbeling CB, Thomas JG, Stallings VA, Schwartz S, et al. Targeting dietary fat or glycemic load in the treatment of obesity and type 2 diabetes: a randomized controlled trial. *Diabetes Res Clin Pract*. 2011;92:37-45.
- [66] Fan C, Chen L, Wang H. [Practice of employing a low glycemic index dietary regimen in dietary guidance for elderly diabetic patient]. *Hulixue Zazhi [Journal of Nursing Science]*. 2013;28:77-9.
- [67] Fan L, Duan A, Xue Z, Feng Y. [Effect of low glycemic index diet in the clinical treatment of diabetes mellitus]. *Quanke Huli [Chinese General Nursing]*. 2010;8:1711-2.
- [68] Fang F. [Analysis of the Effects of Low-medium Caloric Diet on Overweight or Obese Patients with Type 2 Diabetes Mellitus]. *Tangniaobing Xin Shijie [Diabetes New World]*. 2019;22:49-51.
- [69] Fang R. [Effect of low glycemic index diet on glucose and lipid metabolism in elderly patients with type 2 diabetes mellitus in the community]. *Zhonghua Baojian Yixue Zazhi [Chinese Journal of Health Care and Medicine]*. 2016;18:243-4.
- [70] Gannon MC, Nuttall FQ. Effect of a high-protein, low-carbohydrate diet on blood glucose control in people with type 2 diabetes. *Diabetes*. 2004;53:2375-82.



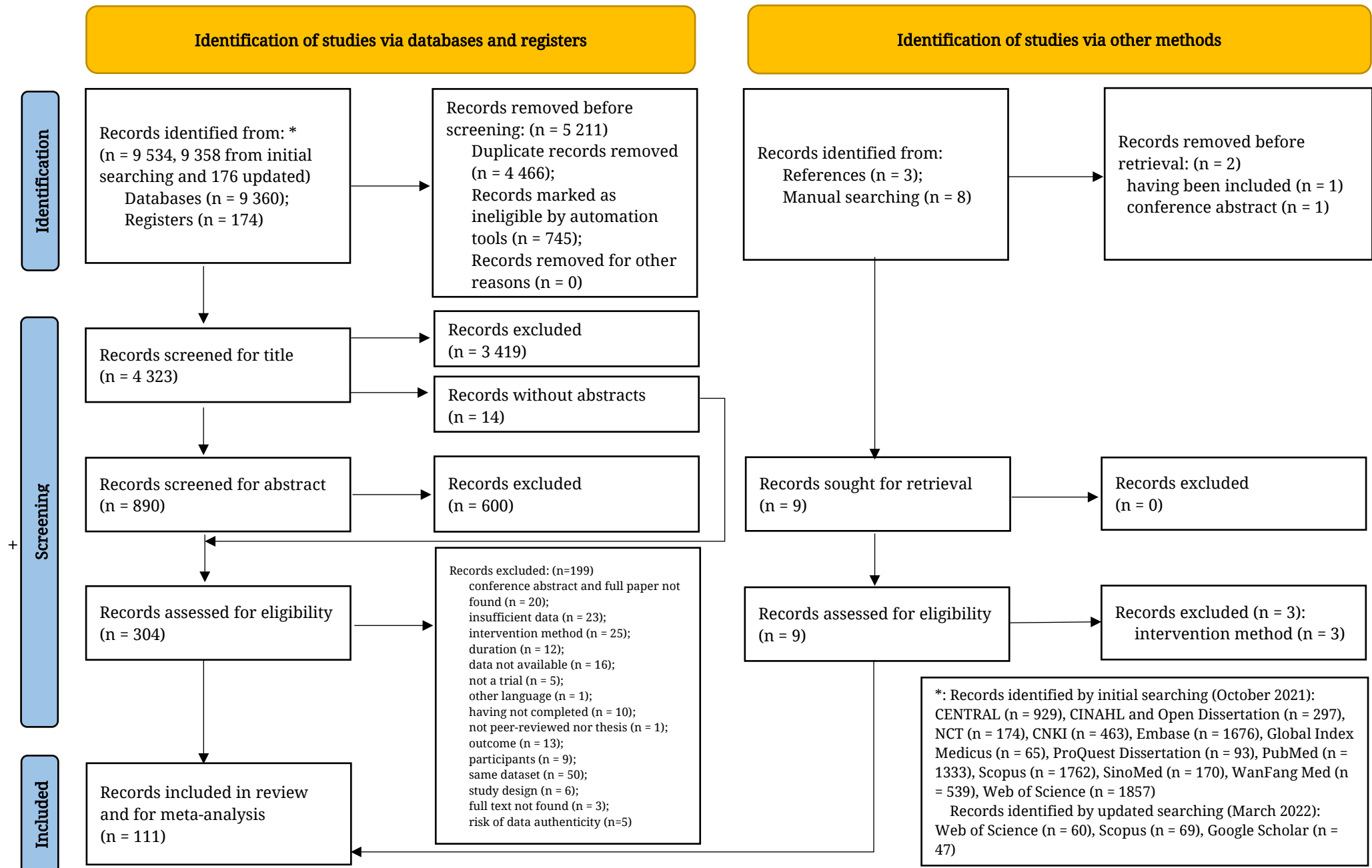
- [71] Gannon MC, Nuttall FQ, Saeed A, Jordan K, Hoover H. An increase in dietary protein improves the blood glucose response in persons with type 2 diabetes. *Am J Clin Nutr.* 2003;78:734-41.
- [72] Goldstein T, Kark JD, Berry EM, Adler B, Ziv E, Raz I. The effect of a low carbohydrate energy-unrestricted diet on weight loss in obese type 2 diabetes patients - A randomized controlled trial. *e-SPEN.* 2011;6:e178-e86.
- [73] Gram-Kampmann EM, Hansen CD, Hugger MB, Jensen JM, Brønd JC, Hermann AP, et al. Effects of a six-month low-carbohydrate diet on glycemic control, body composition and cardiovascular risk factors in patients with type 2 diabetes: an open-label RCT. *Diabetes, Obesity and Metabolism.* n/a.
- [74] Guldbrand H, Dizdar B, Bunjaku B, Lindström T, Bachrach-Lindström M, Fredrikson M, et al. In type 2 diabetes, randomisation to advice to follow a low-carbohydrate diet transiently improves glycaemic control compared with advice to follow a low-fat diet producing a similar weight loss. *Diabetologia.* 2012;55:2118-27.
- [75] Guo L, Du N, Zhu J, Kan W. [Effect of low glycemic index diet on the metabolism of 243 patients with type 2 diabetes mellitus]. *Zhongguo Baojian Yinyang [China Health Care & Nutrition].* 2014;7:4260.
- [76] Han Y, Cheng B, Guo Y, Wang Q, Yang N, Lin P. A Low-Carbohydrate Diet Realizes Medication Withdrawal: A Possible Opportunity for Effective Glycemic Control. *Front Endocrinol (Lausanne).* 2021;12.
- [77] Hashemi R, Rahimlou M, Baghdadian S, Manafi M. Investigating the effect of DASH diet on blood pressure of patients with type 2 diabetes and prehypertension: Randomized clinical trial. *Diabetes Metab Syndr.* 2019;13:1-4.
- [78] He L, Meng G, Chen W, Jin H, Peng Q. [Effects of hypoglycemia index and hypoglycemia loaded diet on oxidative stress and anthropometric parameters in patients with type 2 diabetes mellitus]. *Zhongguo Shiyong Huli Zazhi [Chinese Journal of Practical Nursing].* 2017;33:347-51.
- [79] Heilbronn LK, Noakes M, Clifton PM. The effect of high- and low-glycemic index energy restricted diets on plasma lipid and glucose profiles in type 2 diabetic subjects with varying glycemic control. *J Am Coll Nutr.* 2002;21:120-7.
- [80] Hockaday TDR, Hockaday JM, Mann JI, Turner RC. Prospective comparison of modified-fat-high-carbohydrate with standard low-carbohydrate dietary advice in the treatment of diabetes: one year follow-up study. *Br J Nutr.* 1978;39:357-62.
- [81] Hu X, Gu Q, Lu D, Li B, Jia W, Ge J. [Effect of diets with different carbohydrate contents and exercise on cardiovascular risk factors in people with prediabetes]. *Shiyong Linchuang Yixue (Jiangxi) [Practical Clinical Medicine].* 2018;19:1-5.
- [82] Huang J, Shen H, Li M. [Application of low glycemic index dietary regimen in dietary education for elderly type 2 diabetic patients]. *Zhongxiyi Jiehe Huli (Zhongyingwen) [Nursing of Integrated Tradition Chinese and Western Medicine].* 2016;2:86-8.
- [83] Ikem RT, Kolawole BA, Ojofeitimi EO, Salawu A, Ajose OA, Abiose S, et al. A controlled comparison of the effect of a high fiber diet on the glycaemic and lipid profile of Nigerian clinic patients with type 2 diabetes. *Pakistan journal of nutrition.* 2007;6:111-6.
- [84] Iqbal N, Vetter ML, Moore RH, Chittams JL, Dalton-Bakes CV, Dowd M, et al. Effects of a low-intensity intervention that prescribed a low-carbohydrate vs. a low-fat diet in obese, diabetic participants. *Obesity (Silver Spring).* 2010;18:1733-8.
- [85] Itsiopoulos C, Brazionis L, Kaimakamis M, Cameron M, Best JD, O'Dea K, et al. Can the Mediterranean diet lower HbA1c in type 2 diabetes? Results from a randomized cross-over study. *Nutr Metab Cardiovasc Dis.* 2011;21:740-7.
- [86] Jenkins DJA, Kendall CWC, McKeown-Eyssen G, Josse RG, Silverberg J, Booth GL, et al. Effect of a low-glycemic index or a high-cereal fiber diet on type 2 diabetes: A randomized trial. *JAMA - Journal of the American Medical Association.* 2008;300:2742-53.
- [87] Jimenez-Cruz A, Bacardi-Gascon M, Turnbull WH, Rosales-Garay P, Severino-Lugo I. A flexible, low-glycemic index Mexican-style diet in overweight and obese subjects with type 2 diabetes improves metabolic parameters during a 6-week treatment period. *Diabetes Care.* 2003;26:1967-70.
- [88] Jönsson T, Granfeldt Y, Åhrén B, Branell UC, Pålsson G, Hansson A, et al. Beneficial effects of a Paleolithic diet on cardiovascular risk factors in type 2 diabetes: a randomized cross-over pilot study. *Cardiovasc Diabetol.* 2009;8:35.
- [89] Kahleova H, Matoulek M, Malinska H, Oliyarnik O, Kazdova L, Neskudla T, et al. Vegetarian diet improves insulin resistance and oxidative stress markers more than conventional diet in subjects with Type 2 diabetes. *Diabet Med.* 2011;28:549-59.
- [90] Krebs JD, Elley CR, Parry-Strong A, Lunt H, Drury PL, Bell DA, et al. The Diabetes Excess Weight Loss (DEWL) Trial: a randomised controlled trial of high-protein versus high-carbohydrate diets over 2 years in type 2 diabetes. *Diabetologia.* 2012;55:905-14.
- [91] Lasa A, Miranda J, Bulló M, Casas R, Salas-Salvadó J, Larretxi I, et al. Comparative effect of two Mediterranean diets versus a low-fat diet on glycaemic control in individuals with type 2 diabetes. *Eur J Clin Nutr.* 2014;68:767-72.
- [92] Lee YM, Kim SA, Lee IK, Kim JG, Park KG, Jeong JY, et al. Effect of a Brown Rice Based Vegan Diet and Conventional Diabetic Diet on Glycemic Control of Patients with Type 2 Diabetes: A 12-Week Randomized Clinical Trial. *PLoS One.* 2016;11:e0155918.
- [93] Li R, Liu F, Cui S. [Effectiveness of 30% low-carbohydrate diet in the treatment of type 2 diabetes mellitus and its effect on patients' body mass index]. *Yixue Lilun Yu Shijian [Journal of Medical Theory and Practice].* 2021;34:1316-7.
- [94] Li S, Lin G, Chen J, Chen Z, Xu F, Zhu F, et al. The effect of periodic ketogenic diet on newly diagnosed overweight or obese patients with type 2 diabetes. *Bmc Endocrine Disorders.* 2022;22.
- [95] Li Z-Y, Zhou Y-L. [Effect of nutritional education of low glycemic index foods on type 2 diabetic patients]. *Huli Shijian Yu Yanjiu [Nursing Practice and Research].* 2011;8:7-8.
- [96] Liu K. [Dietary intervention strategies for prevention and treatment of type 2 diabetes mellitus] [Ph.D.]. Chongqing: The Third Military Medical University; 2016.
- [97] Liu X, Lu Y, Li M, Gao Y, Pang G. [Effectiveness of low glycemic index diet for obese type 2 diabetes]. *Shandong Yiyao [Shandong Medical Journal].* 2011;51:95-6.
- [98] Liu X, Qiao J, Qin Y, Yue W, Zhao Z, Shang S, et al. [Effect of ketogenic diet and energy-limiting balanced diet on body composition, blood glucose, and lipids in overweight T2DM patients]. *Zhongguo Linchuang Baojian Zazhi [Chinese Journal of Clinical Healthcare].* 2020;23:823-6.
- [99] Lousley SE, Jones DB, Slaughter P, Carter RD, Jelfs R, Mann JI. High carbohydrate-high fibre diets in poorly controlled diabetes. *Diabet Med.* 1984;1:21-5.
- [100] Luger M, Holstein B, Schindler K, Kruschitz R, Ludvik B. Feasibility and efficacy of an isocaloric high-protein vs. standard diet on insulin requirement, body weight and metabolic parameters in patients with type 2 diabetes on insulin therapy. *Exp Clin Endocrinol Diabetes.* 2013;121:286-94.
- [101] Ma Y, Olendzki BC, Merriam PA, Chiriboga DE, Culver AL, Li W, et al. A randomized clinical trial comparing low-glycemic index versus ADA dietary education among individuals with type 2 diabetes. *Nutrition.* 2008;24:45-56.
- [102] Marco-Benedí V, Pérez-Calahorra S, Bea AM, Lamiquiz-Moneo I, Baila-Rueda L, Cenarro A, et al. High-protein energy-restricted diets induce greater improvement in glucose homeostasis but not in adipokines comparing to standard-protein diets in early-onset diabetic adults with overweight or obesity. *Clin Nutr.* 2020;39:1354-63.

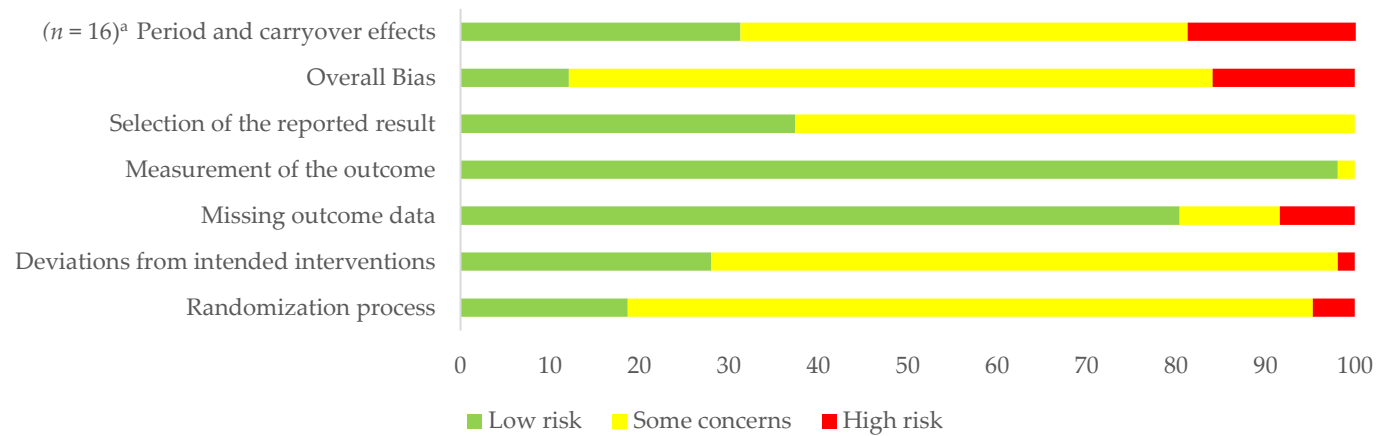
- [103] McLaughlin T, Carter S, Lamendola C, Abbasi F, Schaaf P, Basina M, et al. Clinical efficacy of two hypocaloric diets that vary in overweight patients with type 2 diabetes - Comparison of moderate fat versus carbohydrate reductions. *Diabetes Care*. 2007;30:1877-9.
- [104] Mehling C. Comparison of low glycemic index high carbohydrate, high glycemic index high carbohydrate and monounsaturated fat-enriched diets on insulin sensitivity in the treatment of impaired glucose tolerance [M.Sc.]. Ann Arbor: University of Toronto (Canada); 2000.
- [105] Mohammadi S, Arefhosseini SR, Jafarabadi MA, Sharifnia Z, Ebrahimi-Mameghani M. Regulation of serum lipid profile, glucose, insulin, and adiponectin in obese diabetic women under diet therapy: A randomized clinical controlled study. *Iranian Red Crescent Medical Journal*. 2017;19.
- [106] Mollentze WF, Joubert G, Prins A, van der Linde S, Marx GM, Tsie KG. The safety and efficacy of a low-energy diet to induce weight loss, improve metabolic health, and induce diabetes remission in insulin-treated obese men with type 2 diabetes: a pilot RCT. *Int J Diabetes Dev Ctries*. 2019;39:618-25.
- [107] Nicholson AS, Sklar M, Barnard ND, Gore S, Sullivan R, Browning S. Toward improved management of NIDDM: A randomized, controlled, pilot intervention using a lowfat, vegetarian diet. *Prev Med*. 1999;29:87-91.
- [108] Ning G, Li W. [Effectiveness of a 30% low-carbohydrate diet in the treatment of type 2 diabetes mellitus and the effect on patients' blood lipid levels]. *Zhongguo Chufangyao [Journal of China Prescription Drug]*. 2020;18:191-2.
- [109] Parker B, Noakes M, Luscombe N, Clifton P. Effect of a high-protein, high-monounsaturated fat weight loss diet on glycemic control and lipid levels in type 2 diabetes. *Diabetes Care*. 2002;25:425-30.
- [110] Pavithran N, Kumar H, Menon AS, Pillai GK, Sundaram KR, Ojo O. The Effect of a Low GI Diet on Truncal Fat Mass and Glycated Hemoglobin in South Indians with Type 2 Diabetes-A Single Centre Randomized Prospective Study. *Nutrients*. 2020;12.
- [111] Pavithran N, Kumar H, Menon AS, Pillai GK, Sundaram KR, Ojo O. South Indian cuisine with low glycemic index ingredients reduces cardiovascular risk factors in subjects with type 2 diabetes. *International journal of environmental research and public health*. 2020;17:1-17.
- [112] Pedersen E, Jesudason DR, Clifton PM. High protein weight loss diets in obese subjects with type 2 diabetes mellitus. *Nutr Metab Cardiovasc Dis*. 2014;24:554-62.
- [113] Perna S, Alalwan TA, Gozzer C, Infantino V, Peroni G, Gasparri C, et al. Effectiveness of a hypocaloric and low-carbohydrate diet on visceral adipose tissue and glycemic control in overweight and obese patients with type 2 diabetes. *Bahrain medical bulletin*. 2019;41:159-64.
- [114] Rizkalla SW, Taghrid L, Laromiguiere M, Huet D, Boillot J, Rigoir A, et al. Improved plasma glucose control, whole-body glucose utilization, and lipid profile on a low-glycemic index diet in type 2 diabetic men: a randomized controlled trial. *Diabetes Care*. 2004;27:1866-72.
- [115] Rock CL, Flatt SW, Pakiz B, Taylor KS, Leone AF, Brelje K, et al. Weight loss, glycemic control, and cardiovascular disease risk factors in response to differential diet composition in a weight loss program in type 2 diabetes: a randomized controlled trial. *Diabetes Care*. 2014;37:1573-80.
- [116] Ruggenenti P, Abbate M, Ruggiero B, Rota S, Trillini M, Aparicio C, et al. Renal and Systemic Effects of Calorie Restriction in Patients With Type 2 Diabetes With Abdominal Obesity: A Randomized Controlled Trial. *Diabetes*. 2017;66:75-86.
- [117] Ruggenenti P, Cortinovis M, Trillini M, Parvanova A, Abbate M, Satriano C, et al. Long-term kidney and systemic effects of calorie restriction in overweight or obese type 2 diabetic patients (C.Re.S.O. 2 randomized controlled trial). *Diabetes Res Clin Pract*. 2022;185.
- [118] Saslow LR, Daubenmier JJ, Moskowitz JT, Kim S, Murphy EJ, Phinney SD, et al. Twelve-month outcomes of a randomized trial of a moderate-carbohydrate versus very low-carbohydrate diet in overweight adults with type 2 diabetes mellitus or prediabetes. *Nutr Diabetes*. 2017;7:304.
- [119] Saslow LR, Kim S, Daubenmier JJ, Moskowitz JT, Phinney SD, Goldman V, et al. A randomized pilot trial of a moderate carbohydrate diet compared to a very low carbohydrate diet in overweight or obese individuals with type 2 diabetes mellitus or prediabetes. *PLoS One*. 2014;9:e91027.
- [120] Sato J, Kanazawa A, Makita S, Hatae C, Komiya K, Shimizu T, et al. A randomized controlled trial of 130g/day low-carbohydrate diet in type 2 diabetes with poor glycemic control. *Clin Nutr*. 2017;36:992-1000.
- [121] Shen X, Bao L, Zhou H, Chen M. [Application of dietary intervention with low glycemic index in the treatment of orthopedic patients with type 2 diabetes mellitus]. *Zhongguo Xiandai Yisheng [China Modern Doctor]*. 2021;59:19-22.
- [122] Shige H, Nestel P, Sviridov D, Noakes M, Clifton P. Effect of weight reduction on the distribution of apolipoprotein A-I in high-density lipoprotein subfractions in obese non-insulin-dependent diabetic subjects. *Metabolism*. 2000;49:1453-9.
- [123] Skytte MJ, Samkani A, Petersen AD, Thomsen MN, Astrup A, Chabanova E, et al. A carbohydrate-reduced high-protein diet improves HbA1c and liver fat content in weight stable participants with type 2 diabetes: a randomised controlled trial. *Diabetologia*. 2019;62:2066-78.
- [124] Stentz FB, Brewer A, Wan J, Garber C, Daniels B, Sands C, et al. Remission of pre-diabetes to normal glucose tolerance in obese adults with high protein versus high carbohydrate diet: randomized control trial. *BMJ Open Diabetes Res Care*. 2016;4:e000258.
- [125] Sun J-Q, Zhang X-Y, Zong M, Chen Y-Q, Sun S-J, Wu Y-M, et al. [Investigation of low glycemic index diet on blood glucose, lipid profile and body weight control in patients with type 2 diabetes]. *Zhonghua Neifanmi Daixie Zazhi [Chinese Journal of Endocrinology and Metabolism]*. 2007;23:541-3.
- [126] Sun Q, Wu G. [Clinical efficacy of low-carbohydrate diet in the treatment of type 2 diabetes mellitus]. *Zhongguo Yaoye [China Pharmaceuticals]*. 2020;29:102-3.
- [127] Tang W. [Clinical efficacy of 30% low-carbohydrate diet in the treatment of type 2 diabetes]. *Linchuang Yanjiu [Clinical Research]*. 2021;29:98-9.
- [128] Tay J, Luscombe-Marsh ND, Thompson CH, Noakes M, Buckley JD, Wittert GA, et al. Comparison of low- and high-carbohydrate diets for type 2 diabetes management: a randomized trial. *Am J Clin Nutr*. 2015;102:780-90.
- [129] Thomsen MN, Skytte MJ, Samkani A, Carl MH, Weber P, Astrup A, et al. Dietary carbohydrate restriction augments weight loss-induced improvements in glycaemic control and liver fat in individuals with type 2 diabetes: a randomised controlled trial. *Diabetologia*. 2022.
- [130] Uusitupa M, Laitinen J, Siitonen O, Vanninen E, Pyörälä K. The maintenance of improved metabolic control after intensified diet therapy in recent type 2 diabetes. *Diabetes Res Clin Pract*. 1993;19:227-38.
- [131] Visek J, Lacigova S, Cechurova D, Rusavy Z. Comparison of a low-glycemic index vs standard diabetic diet. *Biomed Pap Med Fac Univ Palacky Olomouc Czech Repub*. 2014;158:112-6.
- [132] Walker KZ, O'Dea K, Nicholson GC, Muir JG. Dietary composition, body weight, and NIDDM. Comparison of high-fiber, high-carbohydrate, and modified-fat diets. *Diabetes Care*. 1995;18:401-3.
- [133] Wang C-M. [Effect of Nutrition Therapy of Low Glycemic Index Foods on Type 2 Diabetic Patients]. *Huaxi Yixue [West China Medical Journal]*. 2009;24:3137-9.
- [134] Wang L-L, Wang Q, Hong Y, Jiang Q, Hou Y-Y, Wang X-H, et al. The Effect of Low-Carbohydrate Diet on Glycemic Control in Patients with Type 2 Diabetes Mellitus. *Nutrients*. 2018;10:661.
- [135] Wang X, Chu J, Hao S, Wei L, Shao W. [Effect of dietary intervention on glucose and lipids in elderly diabetic patients]. *Zhongguo Linchuang Yanjiu [Chinese Journal of Clinical Research]*. 2015;28:1319-21;25.

- [136] Wang Y-L, Yao Y-N, Yang X-L. [Clinical study of the changing of bodyweight (BW)and fasting blood glucose (FBG) in obese patients with type 2 diabetes on a low-carbohydrate diet (LCD)]. Xinjiang Yike Daxue Xuebao [Journal of Xinjiang Medical University]. 2009;914-6.
- [137] Watson N, Dyer K, Buckley J, Brinkworth G, Coates A, Parfitt G, et al. Effects of Low-Fat Diets Differing in Protein and Carbohydrate Content on Cardiometabolic Risk Factors during Weight Loss and Weight Maintenance in Obese Adults with Type 2 Diabetes. *Nutrients*. 2016;8:289.
- [138] Westman EC, Yancy WS, Jr., Mavropoulos JC, Marquart M, McDuffie JR. The effect of a low-carbohydrate, ketogenic diet versus a low-glycemic index diet on glycemic control in type 2 diabetes mellitus. *Nutr Metab (Lond)*. 2008;5:36.
- [139] Wolever TM, Jenkins DJ, Vuksan V, Jenkins AL, Wong GS, Josse RG. Beneficial effect of low-glycemic index diet in overweight NIDDM subjects. *Diabetes Care*. 1992;15:562-4.
- [140] Wolever TMS, Gibbs AL, Mehling C, Chiasson JL, Connelly PW, Josse RG, et al. The Canadian Trial of Carbohydrates in Diabetes (CCD), a 1-y controlled trial of low-glycemic-index dietary carbohydrate in type 2 diabetes: No effect on glycated hemoglobin but reduction in C-reactive protein. *Am J Clin Nutr*. 2008;87:114-25.
- [141] Wu W, Liu C. [Effect of low glycemic index diet on blood glucose, blood lipid and nutritional intake in patients with type 2 diabetes mellitus]. Hubei Minzu Daxue Xuebao (Yixue Ban) [Journal of Hubei Minzu University (Medical Edition)]. 2020;37:54-6.
- [142] Xue D. [Effect of a Mediterranean diet on glucose and lipid metabolism in patients with type 2 diabetes]. Shiyong Linchuang Huli Xue Dianzi Zazhi [Electronic Journal of Practical Clinical Nursing Science]. 2020;6:106-7.
- [143] Yamada Y, Uchida J, Izumi H, Tsukamoto Y, Inoue G, Watanabe Y, et al. A non-calorie-restricted low-carbohydrate diet is effective as an alternative therapy for patients with type 2 diabetes. *Intern Med*. 2014;53:13-9.
- [144] Ye B, Chen L. [Effect of low glycemic index diet based on goal-setting theory on the intervention of patients with type 2 diabetes]. Tangniaobing Tiandi [Diabetes World]. 2021;18:133.
- [145] Yu Y. [Effect of low glycemic index diet in patients with type 2 diabetes]. Zhongguo Min Kang Yixue [Medical Journal of Chinese People's Health]. 2020;32:127-9.
- [146] Zahedi M, Akhlagh SA, Aboomardani M, Alipoor R, Hosseini SA, Shahmirzadi AR. Efficacy of mediterranean diet on blood biochemical factors in type II diabetic patients: A randomized controlled trial. *Gazi Medical Journal*. 2021;31:714-8.
- [147] Zhao Y. [Effect of low glycemic index diet on glucose and lipid metabolism in patients with type 2 diabetes]. Zhongguo Baojian Yingyang [China Health Care & Nutrition]. 2018;4:41-2.
- [148] Zheng X, Zhou L, Wang J. [Influence of low glycemic index (GI) diet on glucose and lipid metabolism of patients with type 2 diabetes]. Zhongguo Xiandai Yisheng [China Modern Doctor]. 2015;53:81-3;6.
- [149] Zhou W. [Effects of diet interventions on glycemic control and cytokines changes in patients with type 2 diabetes mellitus] [M.Nurs.]. Wuhan: Zhongnan University; 2011.
- [150] American Diabetes Association Professional Practice Committee. 8. Obesity and Weight Management for the Prevention and Treatment of Type 2 Diabetes: Standards of Medical Care in Diabetes—2022. *Diabetes Care*. 2021;45:S113-S24.
- [151] Kraus WE, Bhapkar M, Huffman KM, Pieper CF, Krupa Das S, Redman LM, et al. 2 years of calorie restriction and cardiometabolic risk (CALERIE): exploratory outcomes of a multicentre, phase 2, randomised controlled trial. *Lancet Diabetes Endocrinol*. 2019;7:673-83.
- [152] Van Gaal LF, Wauters MA, De Leeuw IH. The beneficial effects of modest weight loss on cardiovascular risk factors. *International journal of obesity and related metabolic disorders : journal of the International Association for the Study of Obesity*. 1997;21 Suppl 1:S5-9.
- [153] Zomer E, Gurusamy K, Leach R, Trimmer C, Lobstein T, Morris S, et al. Interventions that cause weight loss and the impact on cardiovascular risk factors: a systematic review and meta-analysis. *Obes Rev*. 2016;17:1001-11.
- [154] Volek JS, Phinney SD, Krauss RM, Johnson RJ, Saslow LR, Gower B, et al. Alternative Dietary Patterns for Americans: Low-Carbohydrate Diets. *Nutrients*. 2021;13:23.
- [155] Brehm BJ, Seeley RJ, Daniels SR, D'Alessio DA. A Randomized Trial Comparing a Very Low Carbohydrate Diet and a Calorie-Restricted Low Fat Diet on Body Weight and Cardiovascular Risk Factors in Healthy Women. *The Journal of Clinical Endocrinology & Metabolism*. 2003;88:1617-23.
- [156] Dong J-Y, Zhang Z-L, Wang P-Y, Qin L-Q. Effects of high-protein diets on body weight, glycaemic control, blood lipids and blood pressure in type 2 diabetes: meta-analysis of randomised controlled trials. *Br J Nutr*. 2013;110:781-9.
- [157] DiNicolantonio JJ, O'Keefe JH. Effects of dietary fats on blood lipids: a review of direct comparison trials. *Open Heart*. 2018;5:e000871.
- [158] Zafar MI, Mills KE, Zheng J, Regmi A, Hu SQ, Gou L, et al. Low-glycemic index diets as an intervention for diabetes: a systematic review and meta-analysis. *Am J Clin Nutr*. 2019;110:891-902.
- [159] Liese AD, Schulz M, Fang F, Wolever TMS, D'Agostino RB, Jr, Sparks KC, et al. Dietary Glycemic Index and Glycemic Load, Carbohydrate and Fiber Intake, and Measures of Insulin Sensitivity, Secretion, and Adiposity in the Insulin Resistance Atherosclerosis Study. *Diabetes Care*. 2005;28:2832-8.
- [160] Wolever TM. Relationship between dietary fiber content and composition in foods and the glycemic index. *Am J Clin Nutr*. 1990;51:72-5.
- [161] Reynolds A, Mann J, Cummings JH, Winter N, Mete E, Te Morenga L. Carbohydrate quality and human health: a series of systematic reviews and meta-analyses. *Lancet*. 2019;393:434-45.
- [162] Seidelmann SB, Claggett B, Cheng S, Henglin M, Shah A, Steffen LM, et al. Dietary carbohydrate intake and mortality: a prospective cohort study and meta-analysis. *The Lancet Public Health*. 2018;3:e419-e28.
- [163] Stephen AM, Champ MM, Cloran SJ, Fleith M, van Lieshout L, Mejbourn H, et al. Dietary fibre in Europe: current state of knowledge on definitions, sources, recommendations, intakes and relationships to health. *Nutr Res Rev*. 2017;30:149-90.
- [164] Martín-Peláez S, Fito M, Castaner O. Mediterranean Diet Effects on Type 2 Diabetes Prevention, Disease Progression, and Related Mechanisms. A Review. *Nutrients*. 2020;12:2236.
- [165] Neuenschwander M, Hoffmann G, Schwingshackl L, Schlesinger S. Impact of different dietary approaches on blood lipid control in patients with type 2 diabetes mellitus: a systematic review and network meta-analysis. *Eur J Epidemiol*. 2019;34:837-52.
- [166] Davis C, Bryan J, Hodgson J, Murphy K. Definition of the Mediterranean Diet; A Literature Review. *Nutrients*. 2015;7:9139-53.
- [167] Martínez-González MA, Fernández-Jarne E, Serrano-Martínez M, Wright M, Gomez-Gracia E. Development of a short dietary intake questionnaire for the quantitative estimation of adherence to a cardioprotective Mediterranean diet. *Eur J Clin Nutr*. 2004;58:1550-2.
- [168] US Department of Agriculture and US Department of Health and Human Services. Dietary Guidelines for Americans, 2020-2025. 9 ed2020.
- [169] Dyson PA, Twenefour D, Breen C, Duncan A, Elvin E, Goff L, et al. Diabetes UK evidence-based nutrition guidelines for the prevention and management of diabetes. *Diabet Med*. 2018;35:541-7.
- [170] Shirani F, Salehi-Abargouei A, Azadbakht L. Effects of Dietary Approaches to Stop Hypertension (DASH) diet on some risk for developing type 2 diabetes: A systematic review and meta-analysis on controlled clinical trials. *Nutrition*. 2013;29:939-47.

- [171] Rydhög B, Granfeldt Y, Sundquist K, Jönsson T. Paleolithic diet fraction in post hoc data analysis of a randomized cross-over study comparing Paleolithic diet with diabetes diet. *Clinical Nutrition Open Science*. 2021;38:73-80.
- [172] Appel LJ, Moore TJ, Obarzanek E, Vollmer WM, Svetkey LP, Sacks FM, et al. A clinical trial of the effects of dietary patterns on blood pressure. DASH Collaborative Research Group. *N Engl J Med*. 1997;336:1117-24.
- [173] Jönsson T, Granfeldt Y, Erlanson-Albertsson C, Åhrén B, Lindeberg S. A paleolithic diet is more satiating per calorie than a mediterranean-like diet in individuals with ischemic heart disease. *Nutr Metab (Lond)*. 2010;7:85.

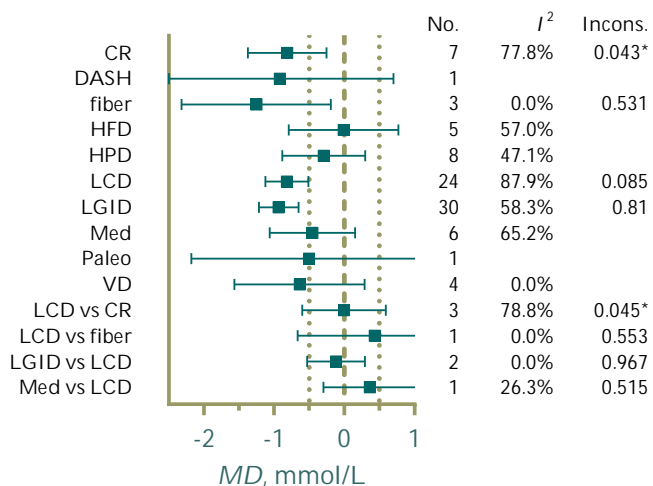




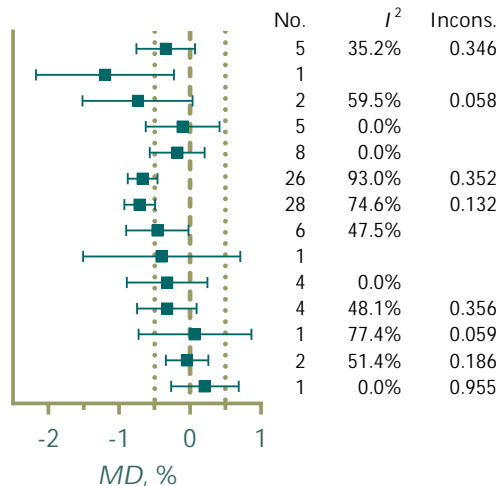


(A) FPG

92 Trials, 4309 I, 3806 C

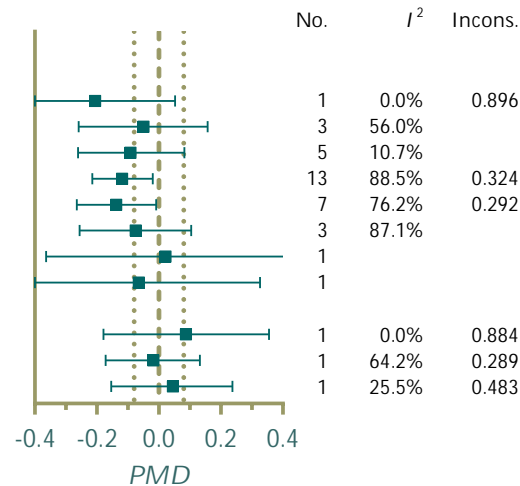
(B) HbA<sub>1c</sub>

90 Trials, 4010 I, 3462 C



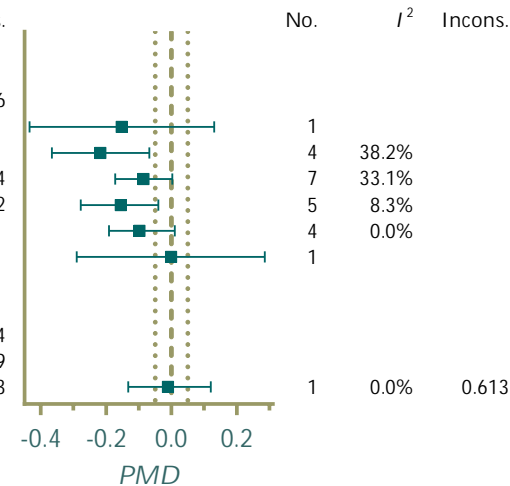
(C) Flns

35 Trials, 1336 I, 1173 C



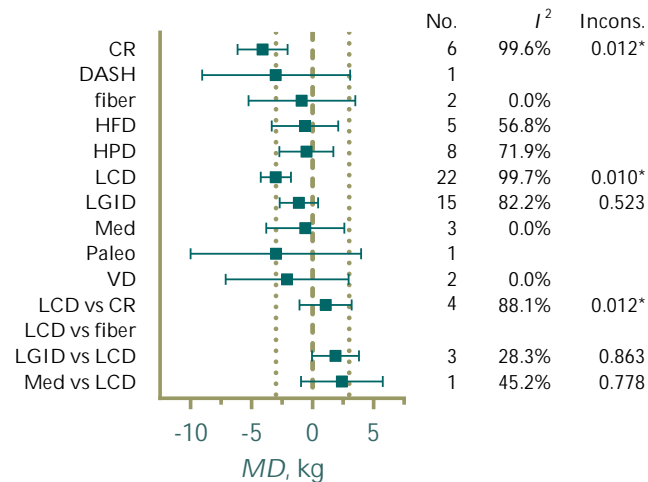
(D) IR

21 Trials, 1057 I, 890 C



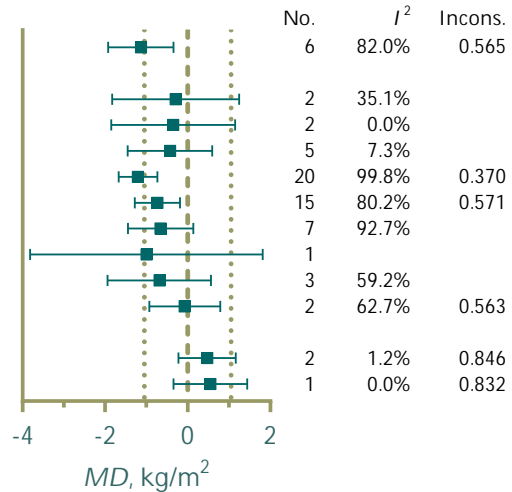
(E) Weight

67 Trials, 3106 I, 2474 C



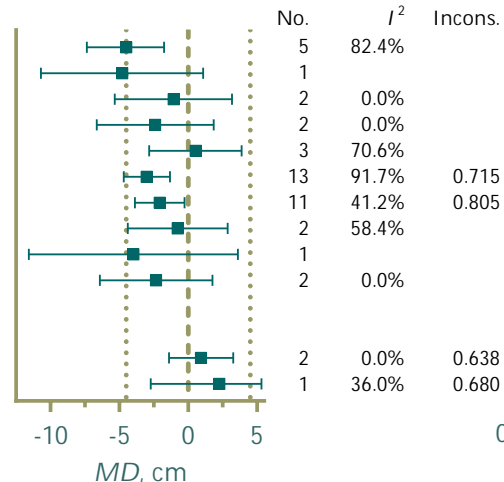
(F) BMI

62 Trials, 2598 I, 2229 C



(G) WC

41 Trials, 1856 I, 1613 C



(H) Attrition Rate

51 Trials

