

1 **The prevalence of mental ill-health in women during pregnancy and after childbirth** 2 **during the Covid-19 pandemic: a Systematic review and Meta-analysis**

3
4 ¹Gayathri Delanerolle*, ¹²Mary McCauley*, Martin Hirsch^{4,3*}, ⁷Yutian Zheng*, ⁷Xu Cong **,
5 ^{5,12}Heitor Cavalini**, ¹ ²Ashish Shetty, ⁵Shanaya Rathod, ^{7,8}Jian Qing Shi***, ¹⁰ Dharani K
6 Hapangama, ^{5,6}Peter Phiri***,
7

8 *Affiliations*

9 ¹University of Oxford, Nuffield Department of Primary Health Care Sciences

10 ²University College London Hospitals NHS Foundation Trust

11 ³University College London

12 ⁴Oxford University Hospitals NHS Foundation Trust

13 ⁵Southern Health NHS Foundation Trust, Research and Innovation Department

14 ⁶University of Southampton, School of Primary Care, Population Sciences and Medical
15 Education, Faculty of Medicine

16 ⁷Southern University of Science and Technology

17 ⁸ Alan Turing Institute

18 ⁹University of Oxford, Department of Psychiatry

19 ¹⁰University of Liverpool

20 ¹¹NHS England and NHS Improvement

21 ¹²Liverpool Women's NHS Foundation Trust, Liverpool

22 Shared authorships

23
24
25
26 Shared first author*

27 Shared second author**

28 Shared last author***
29

30
31
32
33
34 **Corresponding author: Dr Peter Phiri, BSc, PhD, RN,**

35 **Director of Research & Innovation/ Visiting Fellow,**

36 Research & Innovation Department, Southern Health NHS Foundation Trust, Clinical Trials Facility,

37 Tom Rudd Unit Moorgreen Hospital,

38 Botley Road, West End, Southampton SO30 3JB,

39 United Kingdom

40 peter.phiri@southernhealth.nhs.uk
41
42
43
44
45
46
47
48
49

Abstract

Background

Severe Acute Respiratory Syndrome Coronavirus (SARS-CoV) is a respiratory disease causing coronavirus. SARS-CoV has caused the Middle East Respiratory Syndrome (MERS), SARS-CoV in Hong Kong and SARS-CoV-2 (COVID-19). COVID-19, to date, have had the highest mortality and morbidity globally, thus reaching the pandemic status. In comparison to research conducted to explore the impact of pandemics on the general wellbeing, there appears to be a paucity on its association with women's mental health. Many pregnant women have reported that the pandemic negatively impacted their mental health.

Aim

This study aimed is to explore the prevalence of the impact of the COVID-19, MERS and SARS pandemics on the mental health of pregnant women.

Method

A study protocol was developed and published in PROSPERO (CRD42021235356) to explore a number of key objectives. For the purpose of this study PubMed, Science direct, Ovid PsycINFO and EMBASE databases were searched from December 2000 – July 2021. The search results were screened, first by title, and then by abstract. A meta-analysis was conducted to report the findings.

Results

There were no studies reporting the mental health impact due to MERS and SARS. We systematically identified 316 studies that reported on the mental health of women that were pregnant and soon after birth. The meta-analysis indicated 24.9% (21.37%-29.02%) of pregnant women reported symptoms of depression, 32.8% (29.05% to 37.21%) anxiety, 29.44% (18.21% - 47.61%) stress, 27.93% (9.05%-86.15 %) PTSD, and 24.38% (11.89%-49.96%) sleep disorders during the COVID-19 pandemic. Furthermore, the I^2 test showed a high heterogeneity value.

Conclusion

The importance of managing the mental health during pregnancy and after-delivery improves the quality of life and wellbeing of mothers. Developing an evidence based mental health framework as part of pandemic preparedness to help pregnant women would improve the quality of care received during challenging times.

Keywords: Covid-19, Mental ill-health, Depression, Anxiety, Stress, Pregnancy, Antenatal care, Postnatal care, Wellbeing

95 Background:

96 Since December 2019, the coronavirus disease 2019 (COVID-19) pandemic caused by
 97 severe acute respiratory syndrome coronavirus 2 (SARS-Cov-2) has spread around the
 98 world unprecedentedly, overwhelming healthcare systems around the world. On March 11,
 99 2020, the World Health Organization (WHO) declared COVID-19 a global pandemic. This
 100 led to a rippling impact of the virus on healthcare systems and patients who needed to
 101 access care for both physical and mental health and wellbeing [1]. There was concern that
 102 the acute intensive care services would not be able to cope with the growing volume of
 103 affected individuals requiring ventilatory support. To reduce viral transmission and relieve
 104 pressure on healthcare systems, many countries, including the United Kingdom (UK),
 105 entered lockdown.

106 People were ordered by law to stay at home. In many hospitals, staff were redeployed and
 107 departments were adapted or converted to COVID-19 services. However, women who were
 108 pregnant and needed to give birth were identified as a vulnerable group and the ability to
 109 provide good quality maternity care during the Covid-19 pandemic was prioritised.

110
 111 It is well documented that public health emergencies not only have a huge impact on the
 112 physical health of a population but also results in an increase in mental ill-health including:
 113 conditions such as depression; post-traumatic stress disorder (PTSD); substance use
 114 disorder; behavioural disorders; noncompliance with public health directives, domestic
 115 violence; and child abuse[5]. These can arise from triggers directly related to the infection,
 116 for example, the neuroinvasive potential of SARS-CoV-2 may affect brain function and
 117 mental health. The treatment for COVID-19 may also have adverse effects on mental health
 118 and indirectly may contribute to anxiety. In addition, the imposition of unfamiliar and
 119 undesired public health measures including social isolation strongly correlates with the
 120 likelihood of clinically significant depression or anxiety [5,6]. These findings were echoed in
 121 an evaluation of severe acute respiratory syndrome (SARS) epidemic with increases in
 122 PTSD, stress, and psychological distress in both patients and clinicians. Affected individuals
 123 and communities were motivated to comply with quarantine to reduce the risk of infecting
 124 others and to protect their community's health. However emotional distress tempted some to
 125 consider violating the recommended public health measures[6].

126
 127 One such vulnerable group is women during their pregnancy and after childbirth. Maternal
 128 mental ill-health has been an international public health concern for many years[1] with
 129 millions of women experiencing mental ill-health during pregnancy and after childbirth[1, 2].
 130 Common mental disorders (depression, anxiety) rank third in the list of the burden of disease
 131 globally and maternal mental ill-health affects up to 10% of women during pregnancy and
 132 13% of women after childbirth[6, 7]. It is well documented that compromised maternal mental
 133 ill-health is associated with adverse short and long-term consequences for the mother and
 134 the baby[12, 13]. However, limited data exists on the prevalence of mental ill-health in
 135 women who were pregnant and gave birth during the COVID-19 pandemic. This systematic
 136 review and meta-analysis therefore assessed the prevalence of mental ill-health in women
 137 during pregnancy and after childbirth during the Covid-19 pandemic. We then compared our
 138 findings in relation to other global pandemics including severe acute respiratory syndrome
 139 (SARS) and Middle Eastern Respiratory Syndrome (MERS).

140
 141

Methods:

A systematic methodology was developed along with a relevant protocol that was peer reviewed and published in PROSPERO (CRD42021235356). The developed method focuses on the prevalence of mental ill-health in women during pregnancy and after childbirth during the Covid-19 pandemic.

Search criteria

The search criteria was developed based upon the research question using PubMed, Science direct, Ovid PsycINFO and EMBASE databases: PubMed, Science direct and EMBASE. We developed a wide search criterion to ensure the inclusion of any pregnant women with existing gynaecological conditions. The MeSH terms used include (COVID) OR (SARS-CoV-2) AND (SARS) AND (MERS) AND ((mental health) OR (depression) OR (anxiety) OR (PTSD) OR (psychosis) OR (unipolar) OR (bipolar)) AND ((PCOS) OR (fibroid) OR (endometriosis) OR (pre-eclampsia) OR (still birth) OR (GDM) OR (preterm birth) OR (women's health) OR (pregnant women) OR (pregnancy)).

Screening eligibility criteria

All studies published in English were included from 20th December 2019 to 31st July 2021. Screening and data extraction were performed by two authors independently. Initially, titles and abstracts were reviewed to determine the relevance. A PRISMA diagram was completed based on the eligibility steps completed.

Data extraction

Full texts of the included papers were reviewed carefully to extract data including time and locations of the study, participants and sample size, mean age, gestation, days since childbirth, prevalence of mental symptoms, data collection tools used, and cut-offs scores applied. Any disagreement was discussed and resolved by consensus between two authors. For studies with both COVID-19 cohort and non-COVID-19 cohort, we only used data of the COVID-19 cohort and the p-value comparing them. Studies from SARS and MERS were also reviewed in full to ensure the eligibility criteria was met. For studies reporting mean (SD) or median (IQR) of the scales measuring mental symptoms instead of prevalence rates were included and a simulation method assuming normal distribution was applied to generate the corresponding prevalence rates.

Risk of bias assessment

A risk of bias assessment was completed with a RoB table.

Data analysis

Random effects model with restricted maximum-likelihood estimation method was applied for meta-analysis and I-square statistic was used to evaluate heterogeneity across studies. The pooled prevalence rates of anxiety, depression, PTSD, stress and sleep disorder with 95% confidence interval (CI) were computed. Subgroup analysis was conducted in terms of trimester. Sensitivity analysis was performed to assess the robustness of the results. Potential publication bias was assessed with funnel plot and Egger's test. Analyses were conducted with the R studio (version 1.4.17.17) and STATA 16.1.

Results:

Our initial search identified a total of 1603 papers and 523 studies were excluded after screening by titles and abstracts. After full-text evaluation, 217 and 99 studies were included in the systematic review and meta-analysis, respectively. The PRISMA (Preferred Reporting Items for Systematic Reviews and Meta-analyses) flowchart was illustrated in **Figure 1**.

Inclusion and exclusion criteria

All COVID-19, SARS and MERS studies that evaluated the mental health of pregnant women that may or may not have gynaecological conditions that were reported in English between December 2000 – July 2021 were included. All other studies were excluded from this analysis.

Characteristics of studies

A total of 217 COVID-19 studies were included and 99 studies were meta-analysed. These studies were reported from various parts of the world, as indicated in the characteristics **Table 1**. We did not identify SARS and MERS studies that were suitably aligned to the eligibility criteria of our study.

Study design, source of data, data collection method and sample size

All 217 studies used different study designs; 107 cross-sectional, 7 cohort and 7 case controlled. A total of 23 qualitative studies used self-reported methods of data collection. All studies reported a variety of mental health symptoms. Real-world data from hospital admissions were used in 5 studies whilst 2 extracted data from patient medical records. The 217 study pool comprised of a sample of 638,889 pregnant women whilst 6898 were within 90 days of delivery. The sample sizes used within the studies varied considerably; 129 comprised of approximately 500, 40 with 500–999, 18 with 1000–1999 and 24 ≥2000 women.

Stages of pregnancy assessed

A total of 99 studies reported pregnant women during their first, second and third trimester.

Site of data collection

Many studies reported that data collection took place during routine antenatal or postnatal visits in outpatient departments, tertiary/provincial hospitals, secondary level or district hospitals and primary healthcare facility level.

Of the 217 systematically included studies, 64 reported data on depression, 82 on anxiety, 20 on stress, 7 on PTSD, and 8 on sleep disorder. Detailed characteristics of the systematically included studies and those meta-analysed are listed in **Table 1 and 2 (table 2 supplementary material)**.

225

226
227

Table 1. 217 studies in systematic review and meta-analysis

ID	Authors	Publication Year	Country	Sample size	p-value
1	Wu Y	2020	China	1285	0.01
2	Durankuş F	2020	Turkey	260	N/A
3	Moyer CA	2020	United States	2740	p<0.001
4	Zanardo V	2020	Italy	91	p<0.001
5	López-Morales H	2021	Argentina	43	N/A
6	Salehi L	2020	Iran	220	N/A
7	Pariente G	2020	Israel	223	0.002
8	Ostacoli L	2020	Italy	163	N/A
9	Ravaldi C	2021	Italy	200	p<0.001
10	Zhou Y	2020	China	544	N/A
11	Kahyaoglu Sut H	2021	Turkey	403	N/A
12	Hui PW	2021	Hong Kong (China)	925	p<0.05
13	Oskovi-Kaplan ZA	2021	Turkey	223	N/A
14	Sinaci S	2020	Turkey	246	N/A
15	Dong H	2021	China	156	N/A
16	Hocaoglu M	2020	Turkey	283	p=0.01
17	Liang P	2020	China	845	N/A
18	Preis H	2020	US	4451	N/A
19	Yue C	2021	China	308	N/A
20	Maharlouei N	2020	Iran	540	N/A
21	Medina-Jimenez V	2020	Mexico	503	N/A
22	Ceulemans M	2020	Belgium	3445	N/A
23	Milne SJ	2020	Ireland	70	N/A
24	Matsushima M	2020	Japan	1777	N/A
25	Ceulemans M	2021	Ireland, Norway, Switzerland, the Netherlands, and the UK	3545	N/A
26	Gildner TE	2020	US	1856	N/A
27	Shayganfard M	2020	Iran	103	N/A
28	Yassa M	2020	Turkey	203	N/A
29	Silverman ME	2020	US	516	p<0.001
30	Muhaidat N	2020	Jordan	944	N/A
31	Thayer ZM	2021	US	2099	N/A
32	Jiang H	2021	China	1873	N/A
33	Zhang Y	2021	China	560	N/A
34	Mayeur A	2020	France	88	N/A
35	Lin W	2021	China	751	N/A
36	Zhang CJP	2020	China	1901	N/A
37	Yang X	2021	Chinese	19515	N/A
38	Khamees RE	2021	Egypt	120	p<0.001
39	Lorentz MS	2021	Brazil	50	p=0.004 (comparing scores) p=0.062 (comparing prevalence)
40	Silverman ME	2020	US	485	N/A
41	Akgor U	2021	Turkey	297	N/A

42	Shahid A	2020	Pakistan	552	N/A
43	Preis H	2020	US	788	N/A
44	Dagklis T	2020	Greece	269	p<0.001
45	Ionio C	2021	Italy	40	N/A
46	Esteban-Gonzalo S	2021	Spain	353	N/A
47	Koyucu RG	2021	Turkey	729	N/A
48	Overbeck G	2021	Denmark	330	0.2209
49	Kachi Y	2021	Japan	270	N/A
50	Mariño-Narvaez C	2021	Spain	75	p=0.038
51	Liu J	2021	US	715	N/A
52	Smith CL	2021	USA	83	N/A
53	Cao Y	2021	China	298	N/A
54	Mappa I	2021	Italy	161	p<0.0001
55	Mehdizadehkashi A	2021	Iran	300	N/A
56	Yirmiya K	2021	Israel	1114	N/A
57	Xie M	2021	China	689	p=0.03
58	Ge Y	2021	China	446	N/A
59	López-Morales H	2021	Argentina	102	N/A
60	Puertas-Gonzalez JA	2021	Spain	100	p=0.025
61	Çolak S	2021	Turkey	149	N/A
62	Xu K	2021	China	274	N/A
63	Zilver SJM	2021	Netherlands	1102	p=0.14(comparing prevalence)/p=0.03(comparing score)
64	Maharlouei N	2021	Iran	540	N/A
65	Harrison V	2021	UK	205	N/A
66	Saadati N	2021	Iran	300	N/A
67	Wang Q	2021	China	15428	N/A
68	Behmard V	2021	Iran	801	N/A
69	King LS	2021	US	725	p<0.001
70	Nurritzka RH	2021	Indonesia	120	N/A
71	Jelly P	2021	India	333	N/A
72	Wang Q	2021	China	19515	N/A
73	Zhang Y	2021	China	1794	N/A
74	Masjoudi M	2021	Iran	215	N/A
75	Shangguan F	2021	China	2120	N/A
76	Tsakiridis I	2021	Greece	505	N/A
77	Brik M	2021	Spain	164	N/A
78	Effati-Daryani F	2021	Iran	437	N/A
79	Boekhorst MGBM	2021	Netherlands	265	N/A
80	An R	2021	China	209	N/A
81	Lubián López DM	2021	Spain	514	N/A
82	Maleki A	2021	Iran	2336	N/A
83	Khoury JE	2021	Canada	304	N/A
84	Suárez-Rico BV	2021	Mexico	293	N/A
85	Korukcu O	2021	Turkey	497	p<0.0001
86	Obata S	2021	Japan	4798	N/A
87	Sakalidis VS	2021	Australia and New Zealand	233	N/A
88	Basu A	2021	64 countries	6894	N/A

89	Kara P	2021	Turkey	445	N/A
90	Fallon V	2021	UK	614	p<0.001
91	Mo PKH	2021	China	4087	N/A
92	Wu F	2021	Shenzhen	3434	N/A
93	Ding W	2021	Wuhan	817	N/A
94	Chrzan-Dętkoś M	2021	Poland	78	p=0.025
95	Janevic T	2021	New York	228	N/A
96	Thompson KA	2021	US	232	N/A
97	Mirzaei N	2021	Iran	200	N/A
98	Hiiragi K	2021	Japan	279	p=0.17
99	McFarland MJ	2021	US	2402	N/A
100	Zhou Y	2021	China	1266	N/A
101	Gluska H	2021	Israel	421	N/A
102	Liu CH	2021	US	628	p<0.01
103	Ramirez Biermann C	2021	US	162	N/A
104	Palalioglu RM	2021	Turkey	526	N/A
105	Molgora S	2020	Italian	389	N/A
106	Patabendige M	2020	Sri Lanka	257	N/A
107	Mollard E	2021	US	885	N/A
108	Wang J	2021	China	2235	N/A
109	Zeng X	2020	China	625	N/A
110	Miranda AR MD	2021	Argentina	305	N/A
111	Nomura R	2021	Brazil	1662	N/A
112	Davis JA	2021	US	31	N/A
113	Provenzi L	2021	Italy	163	N/A
114	Kotabagi P	2020	UK	11	N/A
115	Berthelot N	2020	Canada	1258	0.001
116	Corbett GA	2020	NA	71	N/A
117	Farrell T	2020	Qatar	288	N/A
118	Stepowicz A	2020	Poland	210	N/A
119	Mayopoulos GA	2021	United States	637	0.008
120	Liu CH	2021	United States	1123	N/A
121	Farewell CV	2020	United States	27	N/A
122	Haruna M	2020	Japan	2872	N/A
123	Bender WR	2020	United States	318	N/A
124	Aksoy Derya Y	2021	Turkey	48	N/A
125	Nodoushan RJ	2020	Iran	560	N/A
126	Mortazavi F	2021	Iran	484	N/A
127	Chasson M	2021	Israel	233	N/A
128	Taubman-Ben-Ari O	2020	Israel	233	N/A
129	Moyer CA	2021	Ghana	71	N/A
130	Dib S	2020	UK	1329	N/A
131	Qi M	2020	China	298	N/A
132	Kassaw C	2020	Ethiopia	178	N/A
133	Zheng QX	2020	China	331	N/A
134	0	2021	Brazil	1041	N/A
135	Perzow SED	2021	US	135	p<0.001
136	Pope J	2021	US,Ireland,UK	573	N/A
137	Kotabagi P	2020	UK	14	p=0.9

138	Naurin E	2021	Sweden	0	N/A
139	Bo HX	2021	China	1309	N/A
140	Barbosa-Leiker C	2021	US	162	N/A
141	Stampini V	2021	Italy	600	N/A
142	Li C	2021	China	2201	N/A
143	Bradfield Z	2021	Australia	2840	N/A
144	Kinser PA	2021	US	524	N/A
145	Özkan Şat S	2021	Turkey	376	N/A
146	Kawamura H	2021	Japan	297	N/A
147	Silverio SA	2021	UK	710	N/A
148	Ahlers-Schmidt CR	2020	US	114	N/A
149	de Arriba-García M	2021	Spain	754	N/A
150	Chaves C	2021	Spain	724	N/A
151	Wdowiak A	2021	Poland	50	N/A
152	Ravaldi C	2020	Italy	2448	N/A
153	Wyszynski DF	2021	64 countries	7185	N/A
154	Sbrilli MD	2021	US	199	N/A
155	Davenport MH	2020	Canada	900	p<0.01
156	Di Mascio D	2020	China, Saudia Arabia, South Korea, United Arab, Jordan, Canada, USA	19	
157	Juan J	2020	USA, Iran, China, Italy, Spain, Peru, Sweden, Turkey, Korea, Australia, Canada and France	24	
158	Amaral WND	2020	China, France, US, Iran, Italy, Spain, EUA, Peru, UK, Switzerland, Netherlands, Ireland, Sweden, Canada, Korea	1457	
159	Di Mascio D	2020	Argentina, Australia, Belgium, Brazil, Colombia, Czech Republic, Finland, Germany, Greece, Israel, Italy, North Macedonia, Peru, Portugal, Republic of Kosovo, Romania, Russia, Serbia, Slovenia, Spain, Turkey, US	388	
160	Sentilhes L	2020	Europe, Sub-Saharan Africa, North Africa	38	
161	Sahin D	2021	Turkey	533	
162	Kayem G	2020	France	617	
163	Adhikari EH	2020	Texas, US	252	
164	Garcia Rodriguez A	2020	N/A	1	
165	Islam MM	2020	N/A	235	
166	Hansen JN	2021	N/A	1	
167	Oltean I	2021	N/A	315	
168	Wei SQ	2021	N/A	438548	
169	Singh V	2021	India	132	
170	Della Gatta AN	2021	China	51	
171	Di Toro F	2021	N/A	1104	
172	Bellos I	2021	China	158	
173	Abou Ghayda R	2020	China, Italy, Iran	104	
174	Remaeus K	2020	Sweden	67	
175	Mullins E	2020	N/A	1606	
176	Zaigham M	2020	China, Sweden, US, Korea, Honduras	108	

177	Yu N	2020	China	7
178	Galang RR	2020	N/A	12
179	Capobianco G	2020	N/A	44
180	Berthelot N	2020	Canada	1258
181	Mappa I	2020	Italy	178
182	Ayaz R	2020	N/A	63
183	Dubey P	2020	N/A	790
184	Pierce-Williams RAM	2020	USA	44
185	Gao YJ	2020	N/A	236
186	Yang R	2020	China	65
187	Yee J	2020	N/A	9032
188	Liu X	2020	China	1947
189	Novoa RH	2020	N/A	322
190	Matar R	2020	China,US,Republic of Korea,Honduras	136
191	Gur RE	2020	America	787
192	Sakowicz A	2020	America	1317
193	Taubman-Ben-Ari O	2020	Israel	336
194	Ng QJ	2020	Singapore	324
195	Hamzehgardeshi Z	2020	Iran	318
196	Ozsurmeli M	2020	Turkey	24
197	Makvandi S	2020	N/A	68
198	Guo Y	2020	China	20
199	Karimi L	2020	N/A	571
200	Waratani M	2020	Japan	1
201	Savasi VM	2020	Italy	11
202	Effati-Daryani F	2020	Iran	205
203	Smith V	2020	N/A	92
204	Chen H	2020	China	9
205	Wang Y	2020	China	72
206	Janevic T	2021	USA	3731
207	Cao D	2020	China	10
208	Lebel C	2020	Canada	1764/175 7
209	Marín Gabriel MA	2020	Spain	11
210	Lokken EM	2020	America	155
211	Ashraf MA	2020	N/A	90
212	de Vasconcelos Gaspar A	2021	Portugal	7
213	Huntley BJF	2020	N/A	538
214	Khoury R	2020	USA	241
215	Diriba K	2020	N/A	1316
216	Assiri A	2016	N/A	5
217	Malik A	2016	N/A	1

228
229
230
231
232
233
234
235
236

237
238

Table 2. 99 studies selected for meta-analysis of depression, anxiety, stress, PTSD and sleep disorders

Authors	Country	Sample Size	Publication Year	Symptoms	Measure Name
Lebel C	Canada	1757/ 1764	2020	Anxiety,Depression	PROMIS,EPDS
Ayaz R	Turkey	63	2020	Anxiety	BAI
Durankuş F	Turkey	260	2020	Anxiety,Depression	BAI,EPDS
Liu X	China	1947	2020	Anxiety	SAS
Mappa I	Italy	178	2020	Anxiety	STAI-T,STAI-S
López-Morales H	Argentina	72	2021	Anxiety,Depression	STAI-S,BDI-II
Salehi L	Iran	220	2020	Anxiety	CDAS
Gur RE	United States	787	2020	Anxiety,Depression	GAD-7,PHQ-2
Ng QJ	Singapore	324	2020	Anxiety,Depression,Str ess	DASS21-A, DASS21-D, DASS21-S
Effati-Daryani F	Iran	205	2020	Anxiety,Depression,Str ess	DASS21-A, DASS21-D, DASS21-S
Ravaldi C	Italy	200	2021	Anxiety	COVID-ASSESS questionnaire
Zhou Y	China	544	2020	Anxiety,Depression,PT SD,Sleep orders	GAD-7,PHQ- 9,PCL-5,ISI
Kahyaoglu Sut H	Turkey	403	2021	Anxiety,Depression	HADS-A, HADS-D
Sinaci S	Turkey	200	2020	Anxiety	STAI-T,STAI-S
Dong H	China	156	2021	Anxiety,Depression	SAS,SDS
Hocaoglu M	Turkey	283	2020	Anxiety,PTSD	STAI-T,STAI- S/IES-R
Yue C	China	308	2021	Anxiety	SAS
Taubman-Ben-Ari O	Israel	336	2020	Anxiety	self-designed questionnaire
Maharlouei N	Iran	540	2020	Anxiety	self-designed questionnaire
Milne SJ	Ireland	70	2020	Anxiety	N/A
Ceulemans M	Ireland, Norway, Switzerland, the Netherlands, and the UK	3545	2021	Anxiety,Depression,Str ess	GAD-7,EDS, PSS-10
Yassa M	Turkey	203	2020	Anxiety	STAI-S,STAI-T
Jiang H	China	1873	2021	Anxiety,Depression,Str ess	SAS,EDS, CPSS-14
Mayeur A	France	88	2020	Anxiety	self-designed questionnaire
Lin W	China	751	2021	Anxiety,Depression	SAS,PHQ-9
Yang X	Chinese	19515	2021	Anxiety,Depression	GAD-7,PHQ-9
Akgor U	Turkey	297	2021	Anxiety,Depression	HADS-A, HADS-D
Preis H	US	788/4451	2020	Anxiety,Stress	GAD-7,PREPS
Dagklis T	Greece	269/215	2020	Anxiety,Depression	STAI-S,STAI- T/EPDS
Esteban-Gonzalo S	Spain	353	2021	Anxiety	STAI-S
Koyucu RG	Turkey	729	2021	Anxiety,Depression,Str ess	DASS21-A, DASS21-D,

						DASS21-S
Liu J	US	715	2021	Anxiety,Depression		GAD-7,EPDS
Cao Y	China	298	2021	Anxiety,Depression		N/A
Mappa I	Italy	161	2021	Anxiety		STAI-T,STAI-S
Mehdizadehkashi A	Iran	300	2021	Anxiety		self-designed questionnaire
Yirmiya K	Israel	1114	2021	Anxiety,Depression,Stress		GAD-7,PHQ-2,PREPS
Xie M	China	689	2021	Anxiety,Depression,Sleep disorders		SCL90-R,PSQI
Ge Y	China	446	2021	Anxiety		SAS
López-Morales H	Argentina	102	2021	Anxiety,Depression		STAI-S,BDI-II
Puertas-Gonzalez JA	Spain	100	2021	Anxiety,Depression,Stress		SCL-90-R,PSS-14
Çolak S	Turkey	149	2021	Anxiety,Depression,Stress		BAI,BDI,PSQI
Xu K	China	274	2021	Anxiety,Depression,Stress,Sleep disorders		SAS,EPDS,CPSS,PSQI
Zilver SJM	Netherlands	1102	2021	Anxiety,Depression,Stress		HADS-A,HADS-D,PSS-10
Maharlouei N	Iran	540	2021	Anxiety,Depression,Stress		DASS21-A,DASS21-D,DASS21-S
Harrison V	UK	205	2021	Anxiety,Depression		PASS,EPDS
Saadati N	Iran	300	2021	Anxiety		HAQ
Wang Q	China	15428	2021	Anxiety,Depression		GAD-7,PHQ-9
Behmard V	Iran	801	2021	Anxiety		CDAS
Hamzehgardeshi Z	Iran	318	2021	Anxiety,Depression		PRAQ,EPDS
Jelly P	India	333	2021	Anxiety		GAD-7
Wang Q	China	19515	2021	Anxiety,Depression		GAD-7,PHQ-9
Zhang Y	China	1794/560	2021	Anxiety,Stress		SAS,IES
Masjoudi M	Iran	215	2021	Anxiety,Stress		CDAS,PSS-14
Shangguan F	China	2120	2021	Anxiety,Stress		GAD-7,PSS
Tsakiridis I	Greece	505	2021	Anxiety,Depression		STAI-S,STAI-T/EPDS
Brik M	Spain	109/164	2021	Anxiety		STAI-S,STAI-T/EPDS
Effati-Daryani F	Iran	437	2021	Anxiety,Depression,Stress		DASS21-A,DASS21-D,DASS21-S
Lubián López DM	Spain	514	2021	Anxiety		STAI-S,STAI-T/EPDS
Maleki A	Iran	2336	2021	Anxiety		GAD-7
Khoury JE	Canada	304	2021	Anxiety,Depression,Stress,Sleep disorders		GAD-7,CES-D,PSS-10,ISI
Suárez-Rico BV	Mexico	293	2021	Anxiety		STAI-T
Obata S	Japan	4798	2021	Anxiety,Depression		K6,EPDS
Mo PKH	China	4087	2021	Anxiety,Depression		GAD-7,PHQ-9
Wu F	Shenzhen	3434	2021	Anxiety,Depression		GAD-7,PHQ-9
Ding W	Wuhan	817	2021	Anxiety		SAS
Mirzaei N	Iran	200	2021	Anxiety,Depression		HADS-A,HADS-D
Ramirez Biermann C	US	162	2021	Anxiety,Depression		self-designed questionnaire
Palalioglu RM	Turkey	526	2021	Anxiety		self-designed questionnaire
Molgora S	Italian	389	2020	Anxiety,Depression		STAI-S,STAI-T/EPDS
Patabendige M	Sri Lanka	257	2020	Anxiety,Depression		HADS-A,

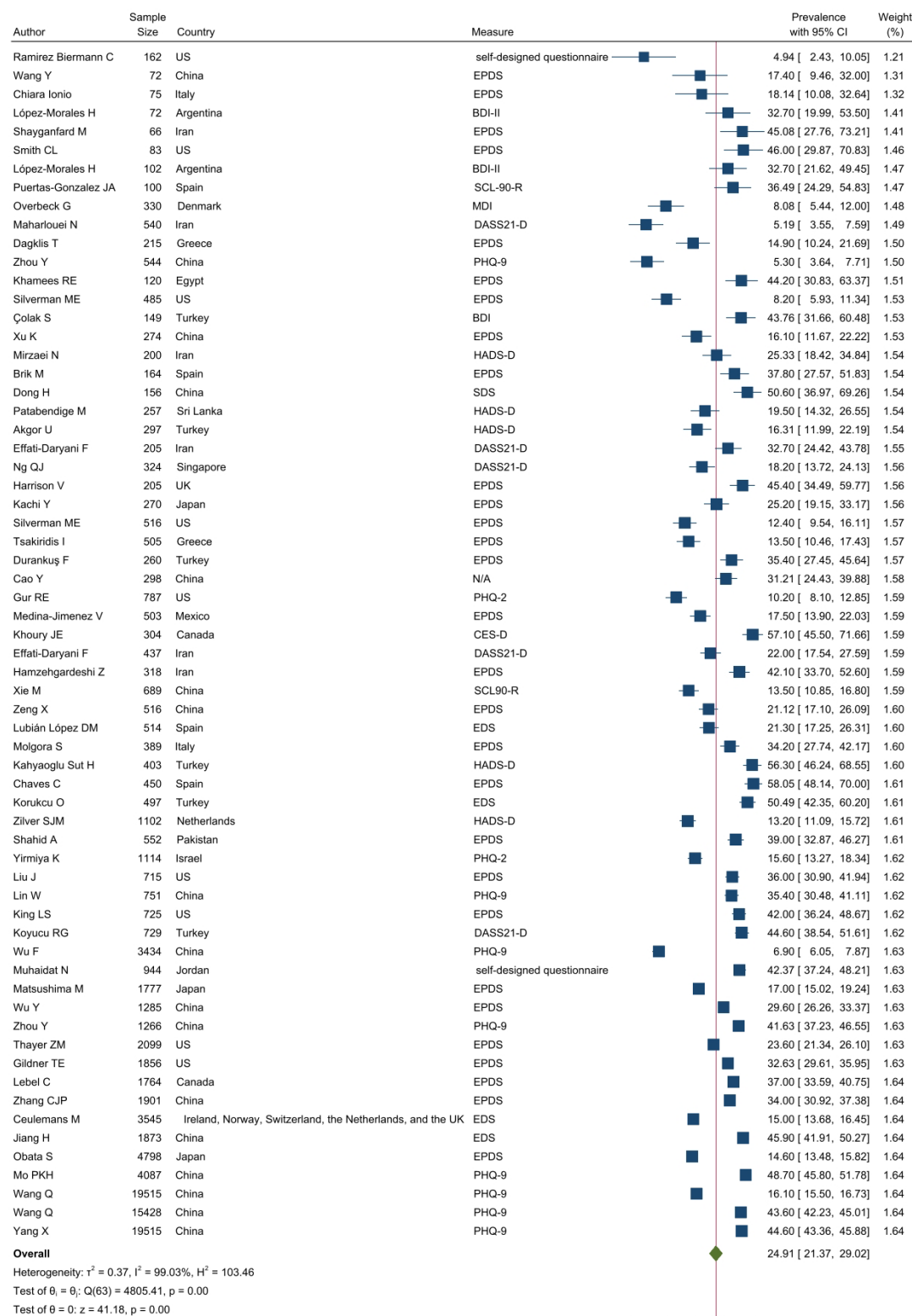
						HADS-D
Zeng X	China	516	2020	Anxiety,Depression,Sleep disorders		GAD-7,EPDS, DSM-IV
NurriZka RH	Indonesia	36	2021	Anxiety		DASS-21-A
Wu Y	China	1285	2020	Depression		EPDS
Wang Y	China	72	2020	Depression,PTSD		EPDS,PCL-C
Medina-Jimenez V	Mexico	503	2020	Depression,Stress		EPDS,PSS
Matsushima M	Japan	1777	2020	Depression		EPDS
Gildner TE	US	1856	2020	Depression		EPDS
Shayganfard M	Iran	66	2020	Depression,Stress		EPDS,PSS-14
Silverman ME	US	516	2020	Depression		EPDS
Muhaidat N	Jordan	944	2020	Depression		self-designed questionnaire
Thayer ZM	US	2099	2021	Depression		EPDS
Zhang CJP	China	1901	2020	Depression,PTSD		EPDS,PCL-S
Khamees RE	Egypt	120	2021	Depression		EPDS
Silverman ME	US	485	2020	Depression		EPDS
Shahid A	Pakistan	552	2020	Depression,Sleep disorders		EPDS,self-designed questionnaire
Ionio C	Italy	75	2021	Depression		EPDS
Overbeck G	Denmark	330	2021	Depression		MDI
Kachi Y	Japan	270	2021	Depression		EPDS
Smith CL	USA	83	2021	Depression,Stress		EPDS,PSS-10
King LS	US	725	2021	Depression		EPDS
Korukcu O	Turkey	497	2021	Depression		EDS
Zhou Y	China	1266	2021	Depression		PHQ-9
Chaves C	Spain	450	2021	Depression		EPDS
Davis JA	US	31	2021	Stress		PSS-10
Ionio C	Italy	75	2021	PTSD		IES-R
Basu A	64 countries	5712	2021	PTSD		IES-6
Kara P	Turkey	445	2021	PTSD		PCL-5
Wang J	China	2235	2021	Sleep disorders		ISI

261

262 *Meta-analysis*

263 Edinburgh Postnatal Depression Scale (EPDS), the Patient Health Questionnaire 9-item
 264 (PHQ-9), the depression subscale of the Hospital Anxiety and Depression Scale (HADS-D)
 265 were the commonly used data collection tools to assess symptoms of depression in women
 266 during pregnancy and after childbirth. The pooled prevalence of depression was 24.91%
 267 with a 95% CI of 21.37%- 29.02% (**Figure 2**).

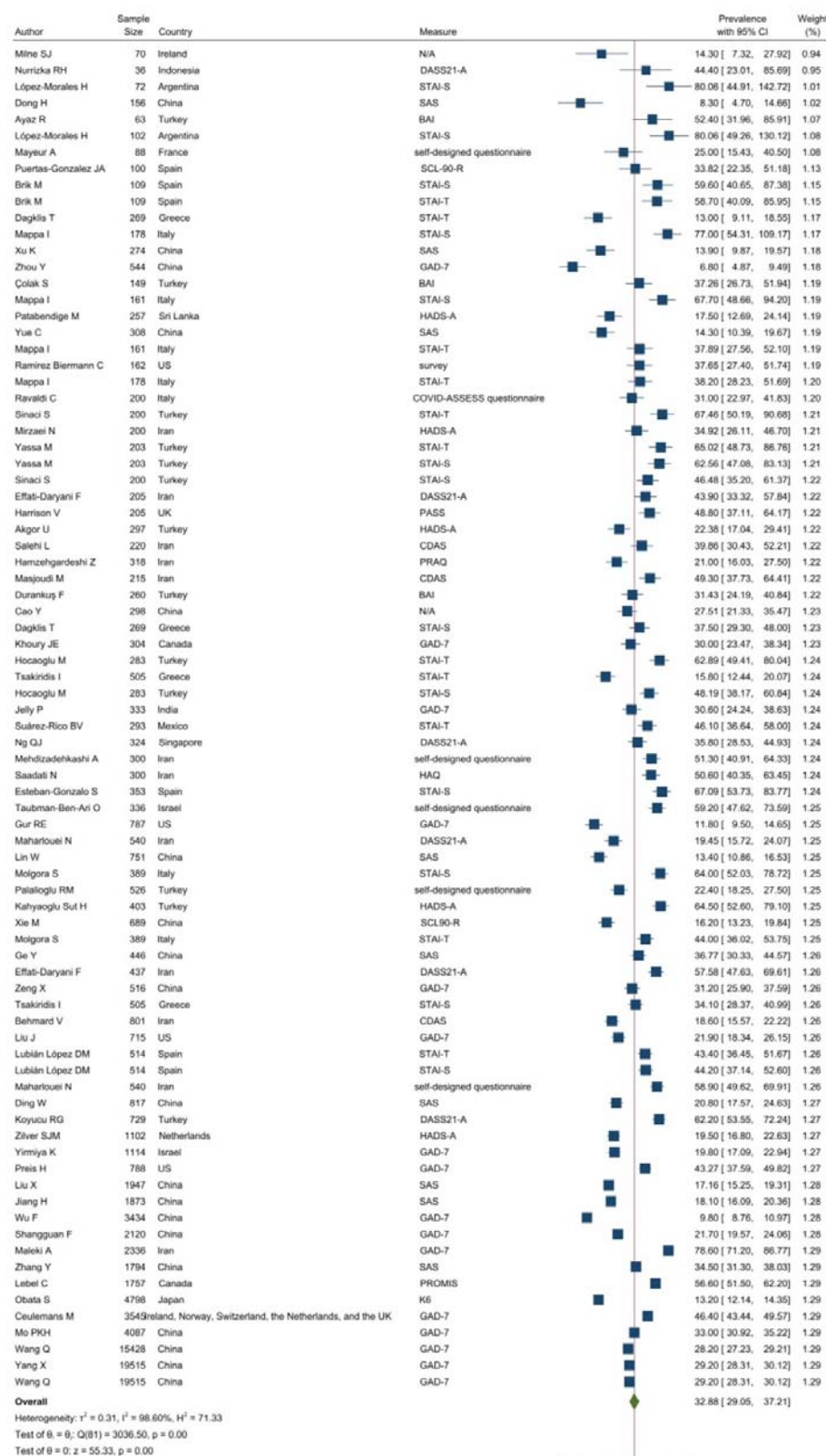
268 **Figure 2. Forest plot of depression**



Random-effects REML model
Sorted by: _meta_se

274 Anxiety symptoms were commonly measured by the State-Trait Anxiety Inventory (STAI,
275 with two subscales STAI-T and STAI-S), the General Anxiety Disorder 7-item (GAD-7) and
276 Self-rating Anxiety Scale (SAS). Anxiety prevalence was 32.88% with a 95% CI of 29.05% to
277 37.21% (**Figure 3**).

278 **Figure 3. Forest plot of anxiety**

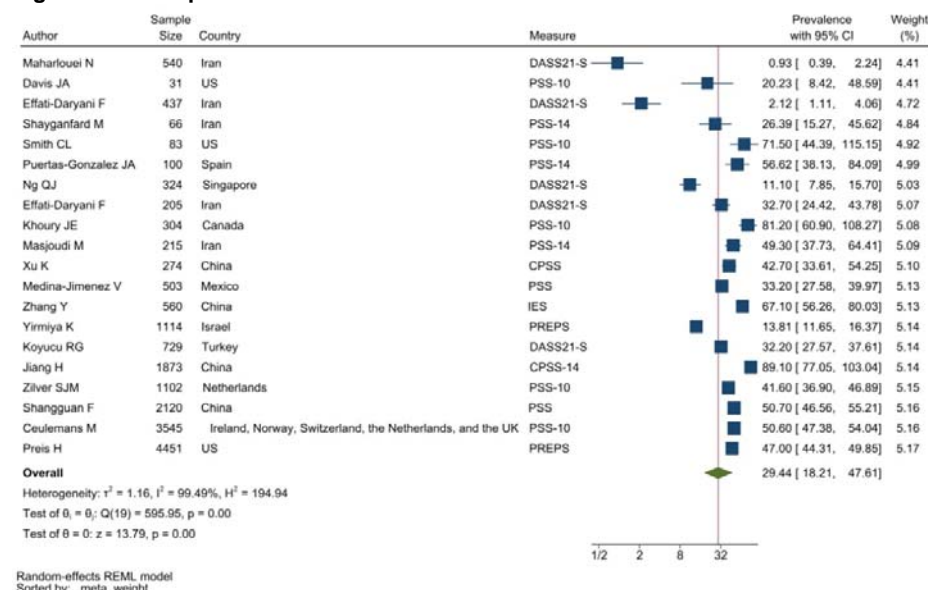


Random-effects REML model
Sorted by: _meta_weight

279
280
281

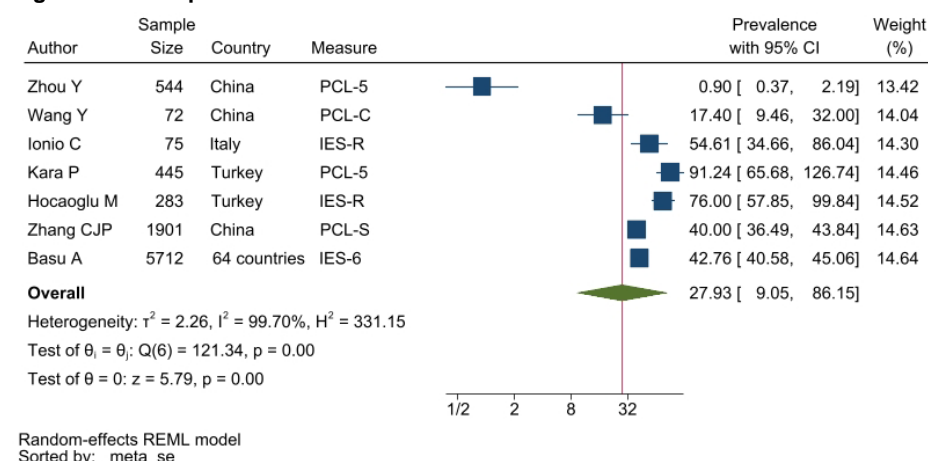
Tools like the Perceived Stress Scale (PSS, with 10-item and 14-item versions), the stress subscale of the 21-item Depression Anxiety and Stress Scale (DASS21-S) were frequently used to evaluate stress symptoms. The pooled prevalence of stress among perinatal women was 29.44% (95% CI: 18.21% - 47.61%) as demonstrated in **Figure 4**.

Figure 4. Forest plot of stress



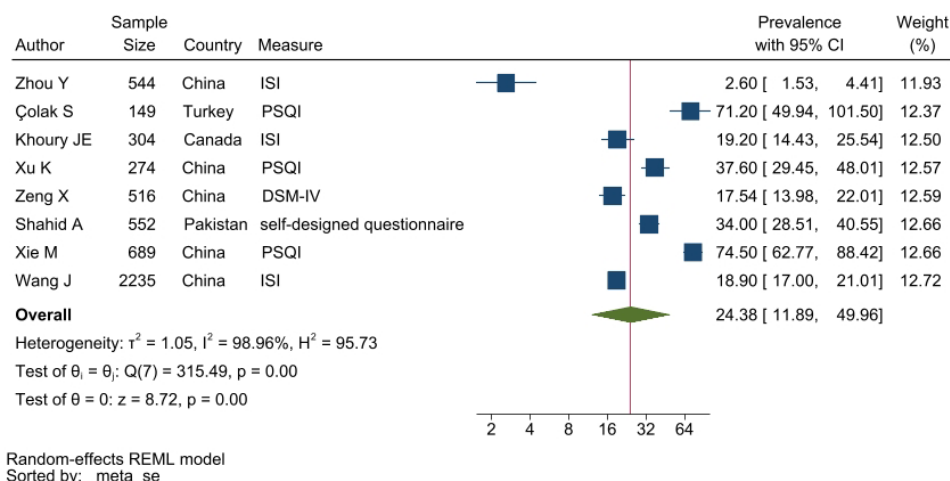
PTSD symptoms were typically measured by the DSM-V Post-Traumatic Stress Disorder Checklist (PCL-5) and the Impact of Events Scale (IES). The studies reporting PTSD symptoms were heterogeneous (**Figure 5**) resulting in a pooled prevalence of 27.93% with a 95%CI of 9.05%-86.15%.

Figure 5. Forest plot of PTSD



The Insomnia Severity Index (ISI) and the Pittsburgh Sleep Quality Index (PSQI) were to assess and report symptoms associated with sleep disorders. The pooled prevalence was 24.38% with a 95% CI of 11.89%-49.96% (**Figure 6 supplementary material**).

Figure 6. Forest plot of sleep disorders



The I^2 evaluated for depression, anxiety, PTSD, stress and sleep issues were over 98%, which demonstrates a high heterogeneity among the studies. Therefore, a subgroup analysis was conducted to further evaluate the heterogeneity.

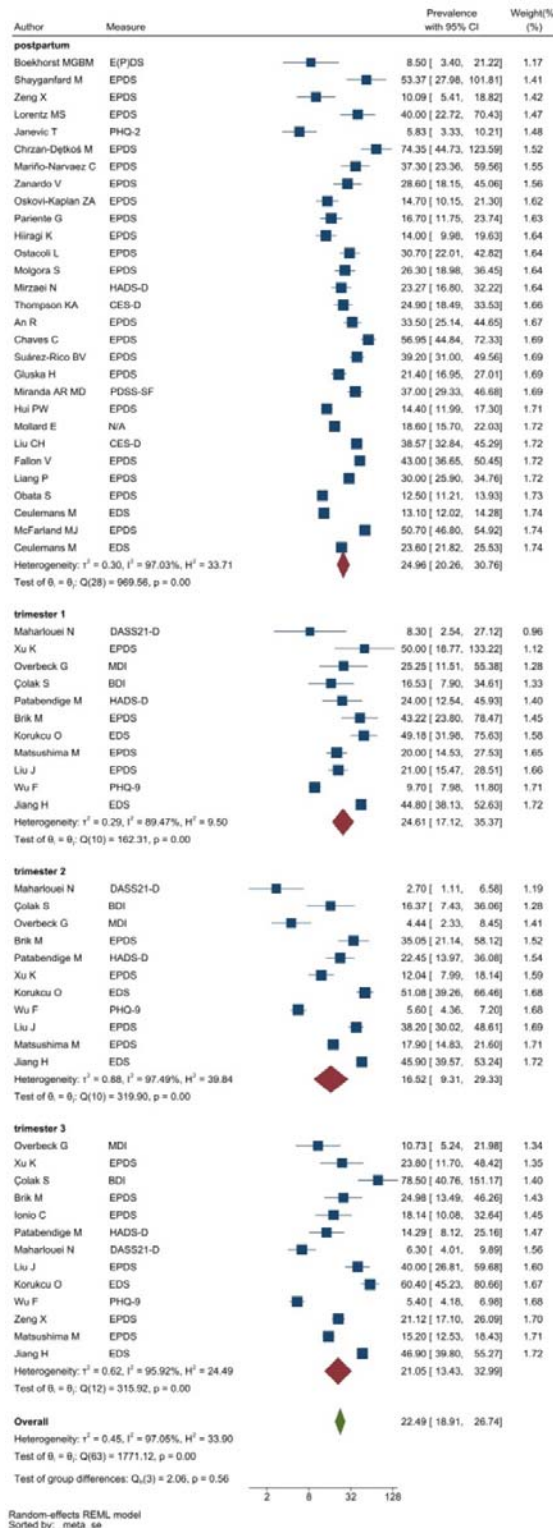
Subgroup analysis

Women were assessed at different stages of their pregnancy. To determine the rates of depression, anxiety, PTSD, stress and sleep problems, the dataset was categorised based on the trimesters; 1st trimester (<12 weeks), 2nd trimester (13-27 weeks), 3rd trimester (28-41 weeks)] and the immediate post-partum period (immediately after childbirth and up to six weeks) for studies that reported follow-up details.

The heterogeneity of depression is lower in comparison to anxiety, PTSD, stress and sleep problems. Heterogeneity within the 1st trimester was 89.47%. I^2 of the anxiety group during the 1st trimester and 2nd trimester were 88.91% and 92.35%, respectively. These appear to similar to the I^2 values of depression. I^2 for stress associated with the 2nd and 3rd trimesters were 78.57% and 64.65%, respectively, indicating mild heterogeneity. Intuitively, Maharlouei and colleagues study reported a small prevalence, thus could be an influencing factor for the heterogeneity reported. I^2 for PTSD across three trimesters were 24.67%, 89.47% and 81.62%, respectively. I^2 was 0% during the 1st trimester within the groups of participants reporting sleep disturbance. 1st trimester group showed relatively low heterogeneity across mental health symptoms, thus strictly stipulating the gestational weeks of the included pregnancy helped reduce the heterogeneity.

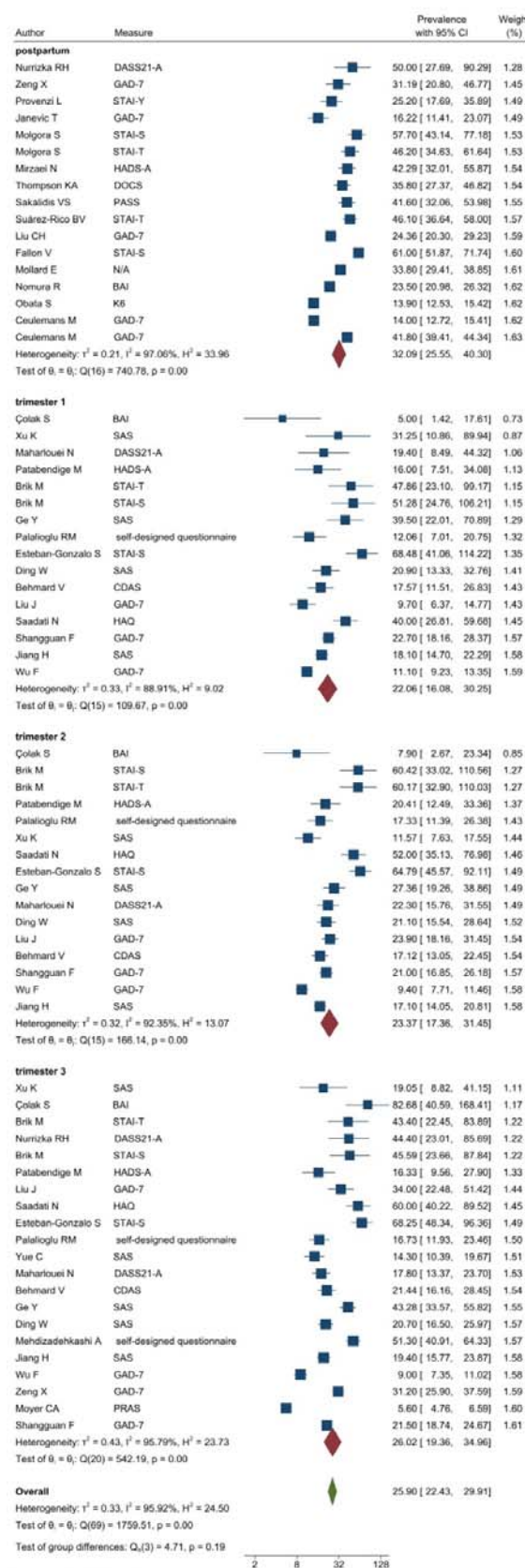
[Figure 7]

Figure 7 Subgroup analysis of depression



339 [Figure 8]

340 **Figure 8 Subgroup analysis of anxiety**

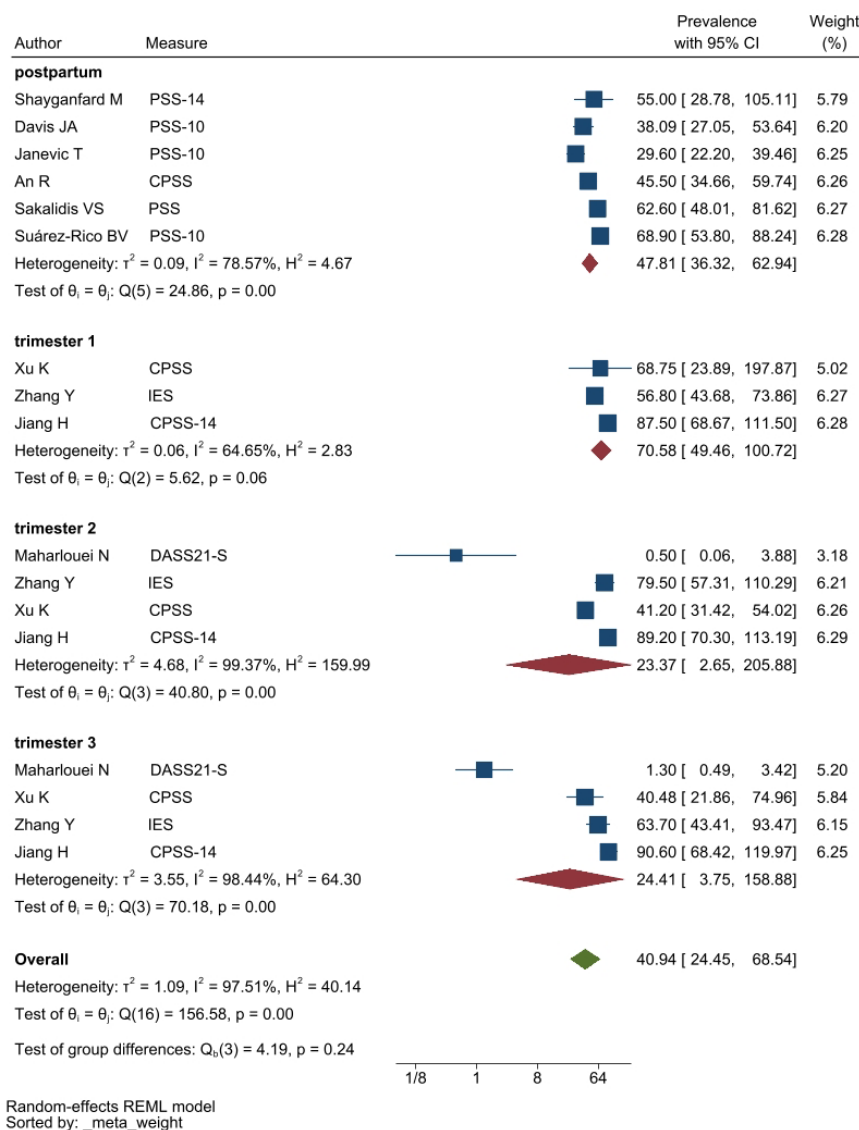


341
342

Random-effects REML model
Sorted by: _meta_weight

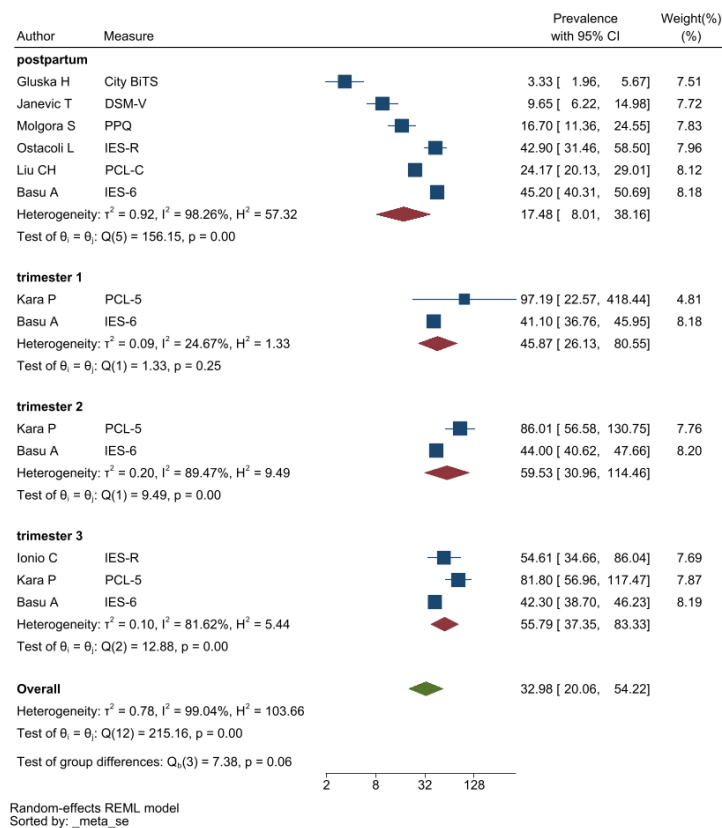
[Figure 9]

Figure 9 Subgroup analysis of stress



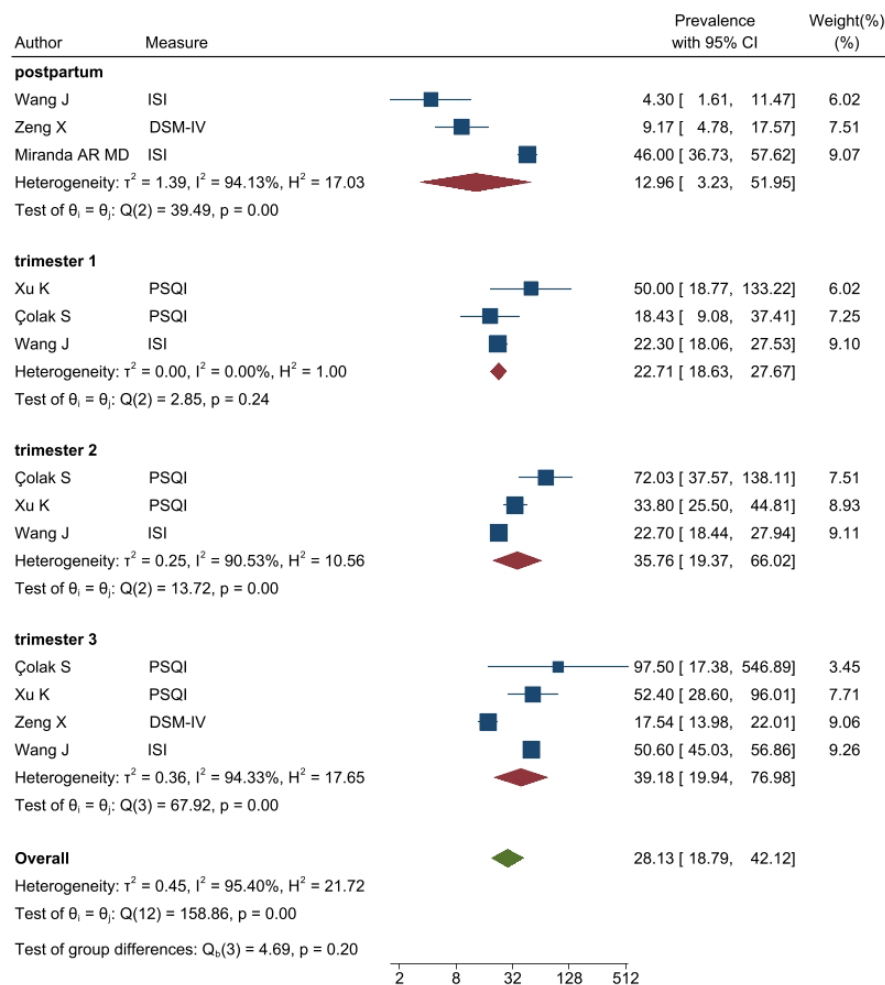
[Figure 10]

Figure 10 Subgroup analysis of PTSD



[Figure 11]

Figure 11 Subgroup analysis of sleep disorders



Random-effects REML model
Sorted by: _meta_se

Figure 12. Funnel plot of depression

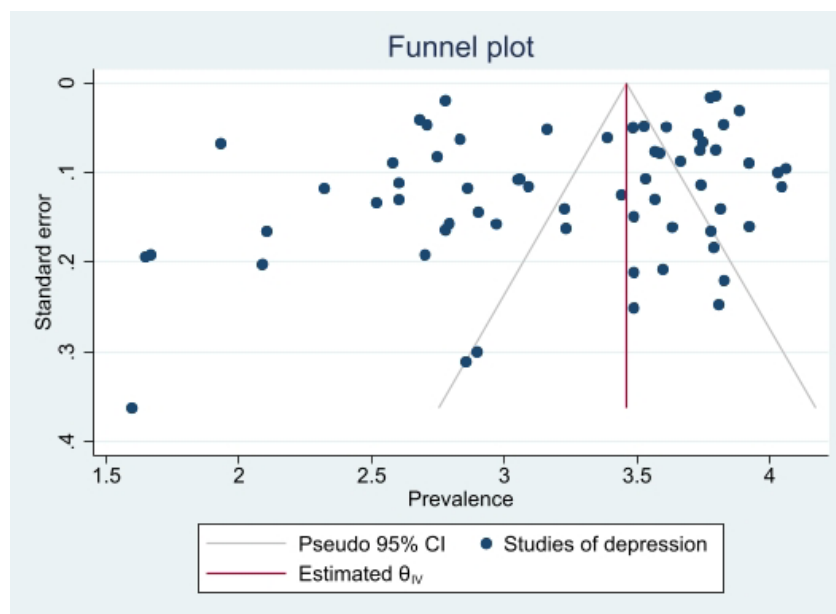


Figure 13. Funnel plot of anxiety

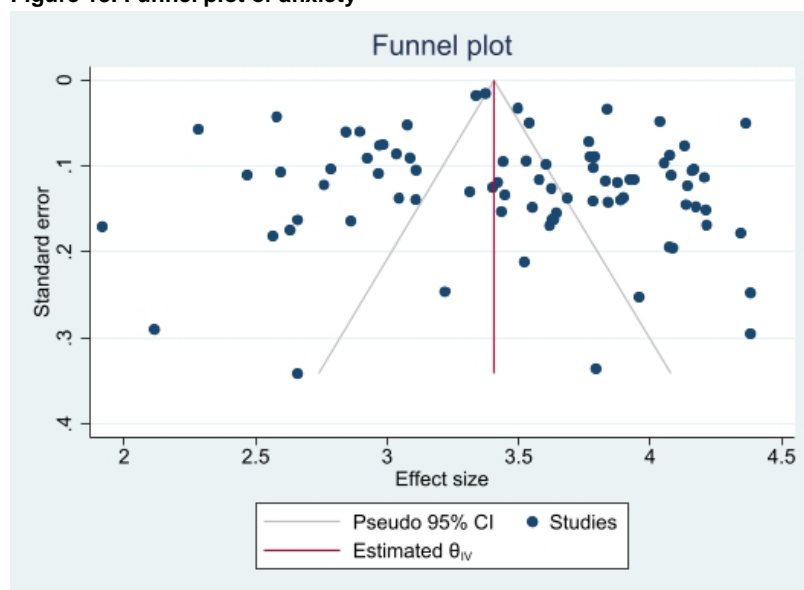


Figure 14. Funnel plot of stress

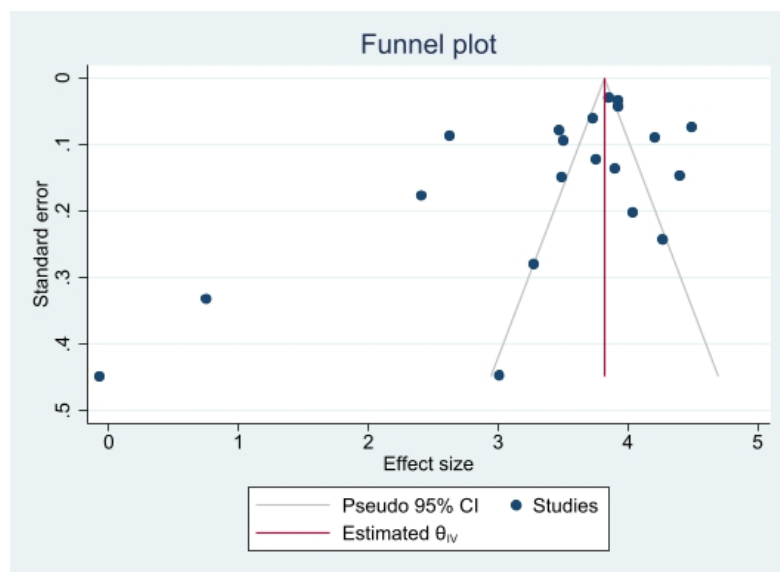


Figure 15. Funnel plot of PTSD

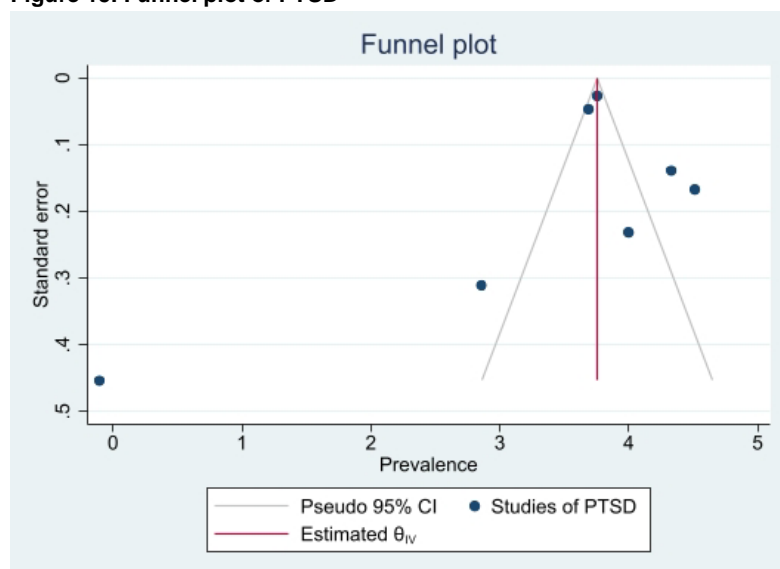
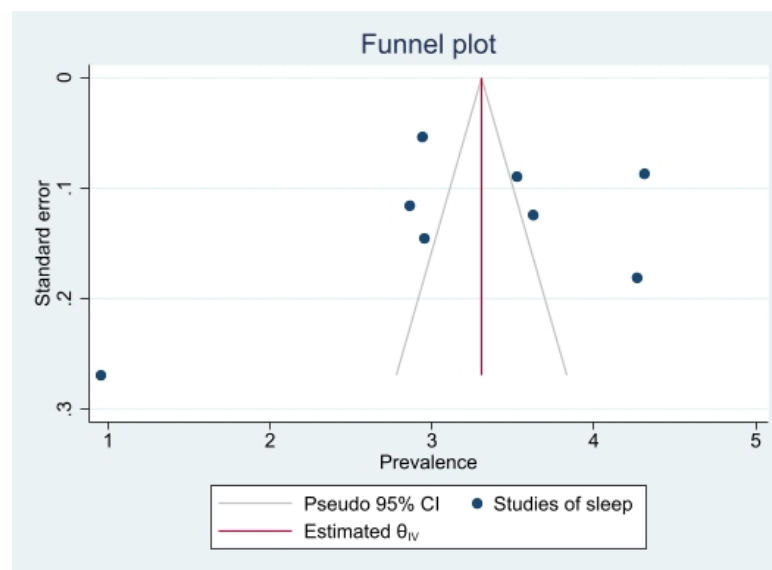


Figure 16. Funnel plot of sleep disorders



Publication bias and sensitivity analysis

Publication bias and a sensitivity analysis was conducted to assess the reliability of the data as some studies had large standard errors that would produce undesirable effects. Copas selection model was used to select studies for the sensitivity analysis. The p-values of residual selection bias were evaluated as demonstrated in **Figure 17-21**. Studies with a p-value of >0.1 indicated that the residual selection had minimal bias and, the selected studies can be represented. The proportions identified were 67.84%, 100% and 59.49% for depression, anxiety and sleep disorders, respectively. Studies reporting stress and PTSD, the copas selection model could not provide a decision indicating the previous conclusions of high heterogeneity is accurate.

Figure 17. P-value for residual selection bias of depression

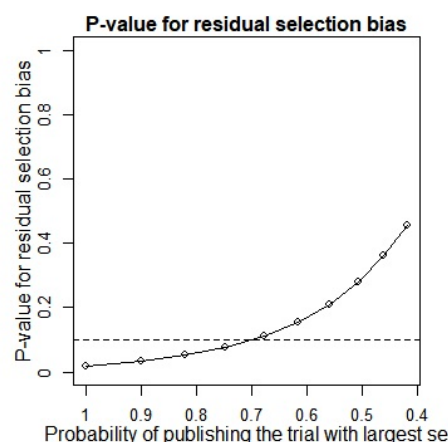


Figure 18. P-value for residual selection bias of anxiety

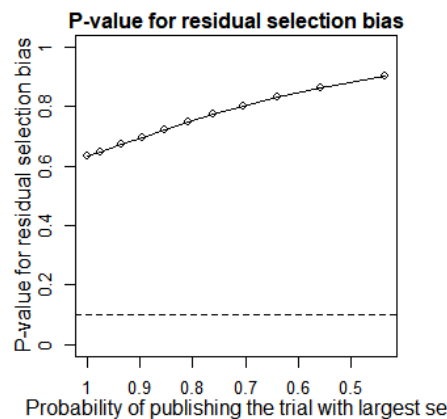


Figure 19. P-value for residual selection bias of stress

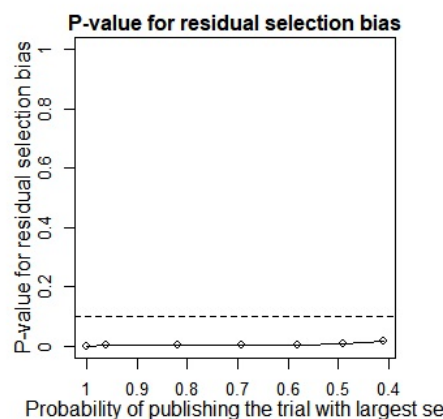


Figure 20. P-value for residual selection bias of PTSD

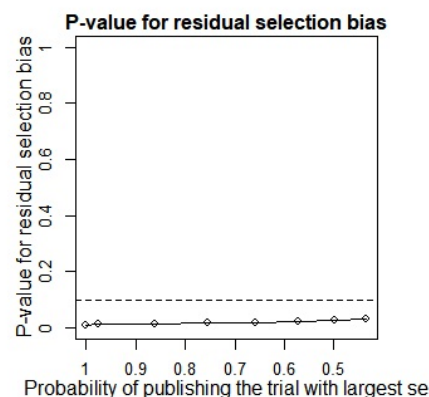
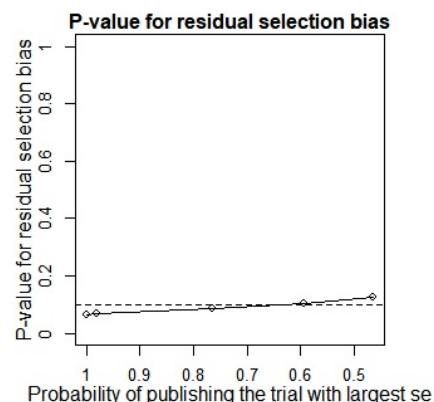


Figure 21. P-value for residual selection bias of sleep disorders



A summary of studies used within the Copas selection model and random effects model has been demonstrated in Table 3, which indicates that the two models have no significant difference. P-value of the changes between these conclusions are 0.1108, 0.638 and 0.1042 for depression, anxiety and sleep disorders, respectively. The p-value of the Egger's test was 0.0256 (**Table 4. supplementary material**) for studies of depression, revealing the existence of publication bias. The p-values of 0.256 and 0.998 (**Table 4. supplementary material**) indicates that it is challenging to detect publication bias for studies associated with anxiety and sleep disturbances.

Table 3. Summary of sensitivity analysis

Outcome	N of study	Model	Probability of publishing study with largest standard error	Proportion(%)	lower(%)	upper(%)	p-value for differences between two conclusions
Depression	64	copas selection model	67.84%	27.11	24.32	30.22	0.1108
		random effects model		24.91	21.37	29.02	
anxiety	82	copas selection model	100.00%	32.88	29.08	37.18	0.638
		random effects model		32.88	29.05	37.21	
Sleep disorders	8	copas selection model	59.49%	27.11	14.94	49.21	0.1042
		random effects model		24.38	11.89	49.95	

Table 4. P-value of Egger Test for the five mental health symptoms

Outcome	N of studies	p-value of Egger test
depression	64	0.0256
anxiety	82	0.256
stress	20	0.069
PTSD	7	0.742
sleep disorders	8	0.998

Note: (*) : p<0.05 indicates significance

Discussion

Main findings

Our study demonstrates that depression, anxiety, PTSD, stress and sleep problems were common throughout the pregnancy period and after childbirth during the COVID-19 pandemic with 24.9% of women reporting symptoms of depression, 32.8% anxiety, 29.44% stress, 27.93% PTSD, and 24.38% sleep disorders. The lack of research conducted to assess the mental health impact of SARS and MERS on pregnant women is a significant limitation as such data could have supported preparation for similar pandemics in the future. Our meta-analyses indicated a clear-cut mental health impact of COVID on pregnant and post-partum mothers with a pooled prevalence of multiple symptomatology of depression, anxiety, PTSD, stress and insomnia.

Strengths and weakness

To our knowledge, this is the first systematic review and meta-analysis to focus on mental health outcomes in women during pregnancy and after childbirth during the Covid-19 pandemic. The searches were not limited by geographical location or language, therefore, further increasing the chances for all relevant literature to be identified. The MESH terms used did not consider all types of obstetric or gynaecology conditions but did include the common conditions. The variety of screening tools used across the included studies must be considered when interpreting the results of this review. Direct comparisons cannot be made where the same screening tool was not used. Furthermore, most studies used self-reported questionnaires, with no clinical follow-up to confirm diagnoses. Therefore, the results cannot be interpreted as prevalence of mental illness, but rather prevalence of symptomatology.

Interpretation

Some studies have demonstrated that the extent and severity of mental health impact increased in women during pregnancy and after childbirth during humanitarian disasters and pandemics which is similar to our study [11].

The subgroup analysis showed that the prevalence of depression is identical during the first trimester of pregnancy [24.61% (95% CI 17.12 – 35.37)] and after childbirth [24.96 (95% CI 20.26 – 30.76)] compared to the second and third trimesters when the prevalence of depression is much lower at 16.52 (95% CI 9.31 – 29.33), and 22.49 (95% CI 18.91 – 26.74), respectively. This is suggestive of women who became pregnant and gave birth during the pandemic suffered from depression more frequently in the early stage and after birth, which appears to have been plateaued during the latter part of their pregnancy. It is unclear as to the reason for this observation, and the impact of this in a real-time scenario. The prevalence of anxiety, on the other hand, is higher among women after childbirth [32.09 (95% CI 25.55 – 40.30)], compared to an identical prevalence of anxiety during all the three trimesters of pregnancy [1st trimester 22.06 (95% CI 16.08 – 30.25), 2nd trimester 23.37 (95% CI 17.36 – 31.45), 3rd trimester 26.02 (95% CI 19.36 – 34.96)]. This finding suggests that women after childbirth suffered more from anxiety during the Covid-19 pandemic. The stress level was significantly higher in women during the 1st trimester of pregnancy 70.58% (95% CI 49.46 – 100.72), compared to 47.81% (95% CI 36.32 – 62.94).

This could be due to some of these women being first-time mothers or, general stress and health anxiety regarding how and when to access care from midwives and obstetricians as part of routine and emergency maternity care due to the Covid-19 pandemic. The findings of high level of stress amongst pregnant women is in keeping with other studies carried out during the Covid-19 pandemic that reported up to 70% of pregnant women suffered from stress during the pandemic[8]. Being pregnant and giving birth are known triggers for women to develop anxiety, and depression and pregnancy is a known risk factor for exacerbations or decline in pre-existing mental ill-health[9,10]. Other possible reasons for the increase in mental ill-health in women during pregnancy or after childbirth may be because of the massive clinical changes that took place regarding how women could access maternity care during the Covid-19 pandemic. As pregnant women were at higher risk of severe illness if they become infected with severe acute respiratory syndrome (SARS)-CoV-2 and develop COVID-19, pregnant women were advised to be stringent with public health measures such as social distancing and self-isolation to lower their risk of COVID-19 exposure. This led to the rapid implementation of virtual access to antenatal care to minimising the need for travel to antenatal clinics and in-person contact with healthcare staff, and antenatal care changed immediately from face-to-face consultations to telephone or video consultations. Birth partners were limited in number and visiting hours for partners were restricted resulting in less emotional and psychological support for women during labour in the delivery room, and after childbirth on the postnatal wards. Furthermore, as the Covid-19 vaccination was developed and the implementation programme initiated, there was uncertainty regarding the effectiveness and safety of the Covid-19 vaccine in women who were pregnant, which may have contributed and exacerbated stress and anxiety.

Recommendations

All women should be risk assessed for maternal mental health at their booking visit and screened at every contact during pregnancy and after childbirth. All healthcare systems need to invest in perinatal mental health services delivered from a multi-disciplinary team including mental health nurses, specialist midwives, obstetricians with specialist interest in mental health and perinatal psychologists and psychiatrist. Maternity mental health services should be delivered in a way that meets the specific needs of the individual patient, including face-to-face consultations, telephone calls and/or video consultations. Up to date information regarding the impact of Covid-19 on maternity services needs to be available and easily accessible for women during pregnancy and after childbirth, for example by using social media campaigns and hospital websites. Learning from this data derived from COVID pandemic and consideration of the special needs of the pregnant and postnatal mothers should be imperative in strategies to implement early to improve preparedness of the health service in future pandemics.

Conclusion

This study highlights that maternity mental ill-health was common during the Covid-19 pandemic and highlights the need to understand the complexity of factors associated with maternal mental health. Maternity mental health services need further investment and prioritisation and clear effective referral pathways and support for women who report mental health concerns during and after pregnancy are needed and require further research as to

how best provide this care in a way that meets the specific needs of each women, across different healthcare systems.

List of abbreviations:

MERS- Middle Eastern Respiratory Syndrome
SARS- Severe acute respiratory syndrome
EPDS- Edinburgh Postnatal Depression Scale
SAS- Self-rating Anxiety Scale
IES- Impact of Events Scale
ISI - Insomnia Severity Index
PSQI- Pittsburgh Sleep Quality Index
IAPT- Improving Access to Psychological Therapy

Declarations:

Ethics approval and consent to participate
Not applicable for this review?

Consent for publication
Not applicable?

Availability of data and materials
Data availability statement goes here.
Competing interests
Financial and non-financial competing interests should be mentioned here.

Funding
Source(s) of funding should be mentioned here. Role of the funding source in the design of the study and data collection/analysis/interpretation should be declared.

Authors' contributions
Authors' individual contributions should be mentioned here.

Acknowledgements
Authors should obtain permission from everyone to be acknowledged in this section.

References

1. Odejinmi F, Egbase E, Clark TJ, Mallick R. COVID-19 in Women's health reducing the risk of infection to patients and staff during acute and elective hospital admission for gynaecological surgery. *Best Pract Res Clin Obstet Gynaecol.* 2021; **73**: 40-55 [PMID: [7970477](#) DOI: [10.1016/j.bpobgyn.2021.03.005](#)].
2. Royal College of Obstetricians and Gynaecologists Restoration and Recovery: Priorities for Obstetrics and Gynaecology. *Royal College of Obstetricians and Gynaecologists.* 2020. <https://www.rcog.org.uk/globalassets/documents/guidelines/2020-05-29-restoration-and-recovery---priorities-for-obstetrics-and-gynaecology.pdf>
3. The Lancet Rheumatology. Too long to wait: the impact of COVID-19 on elective surgery. *Lancet Rheumatol.* 2021 Feb.; **3**: e83 [PMID: [33778775](#) DOI: [10.1016/s2665-9913\(21\)00001-1](#)]
4. Soares-Júnior JM, Sorpreso ICE, Motta EV, Utiyama EM, Baracat EC. Gynecology and women's health care during the COVID-19 pandemic: Patient safety in surgery and prevention. *Clinics (Sao Paulo).* 2020 Jun 22; **75**: e2063 [PMID: [32578830](#) DOI: [10.6061/clinics/2020/e2063](#)]
5. Galea S, Merchant RM, Lurie N. The Mental Health Consequences of COVID-19 and Physical Distancing: The Need for Prevention and Early Intervention. *JAMA Intern Med.* 2020 Jun 1; **180**: 817-818 [PMID: [32275292](#) DOI: [10.1001/jamainternmed.2020.1562](#)]
6. Pfefferbaum B, North CS. Mental Health and the Covid-19 Pandemic. *N Engl J Med.* 2020 Aug 6; **383**: 510-512 [PMID: [32283003](#) DOI: [10.1056/nejmp2008017](#)]
7. Loades ME, Chatburn E, Higson-Sweeney N, Reynolds S, Shafran R, Brigden A, et al. Rapid Systematic Review: The Impact of Social Isolation and Loneliness on the Mental Health of Children and Adolescents in the Context of COVID-19. *J Am Acad Child Adolesc Psychiatry.* 2020; **59**:1218-1239.e3 [PMID: [32504808](#) DOI: [10.1016/j.jaac.2020.05.009](#)]
8. Yan H, Ding Y, Guo W. Mental Health of Pregnant and Postpartum Women During the Coronavirus Disease 2019 Pandemic: A Systematic Review and Meta-Analysis. *Front Psychol.* 2020; **11**: 617001 [PMID: [33324308](#) DOI: [10.3389/fpsyg.2020.617001](#)]

9. Woody CA, Ferrari AJ, Siskind DJ, Whiteford HA, Harris MG. A systematic review and meta-regression of the prevalence and incidence of perinatal depression. *J affect disord.* 2017; **219**: 86-92 [PMID: [28531848](#) DOI: [10.1016/j.jad.2017.05.003](#)]
10. Dennis C-L, Falah-Hassani K, Shiri R. Prevalence of antenatal and postnatal anxiety: systematic review and meta-analysis. *Br J Psychiatry.* 2017; **210**: 315-323 [PMID: [28302701](#) DOI: [10.1192/bjp.bp.116.187179](#)]
11. Harville E, Xiong X, Buekens P. Disasters and perinatal health:a systematic review. *Obstet Gynecol Surv.* 2010; **65**: 713-28 [PMID: [21375788](#) DOI: [10.1097/ogx.0b013e31820eddbbe](#)]

Figure 1. PRISMA Flow Diagram

Table 1. 217 studies in systematic review and meta-analysis

Table 2. (Supplementary material) 99 studies selected for meta-analysis of depression, anxiety, stress, PTSD and sleep disorders

Figure 2. Forest plot of depression

Figure 3. Forest plot of anxiety

Figure 4. Forest plot of stress

Figure 5. Forest plot of PTSD

Figure 6 (supplementary material)

Figure 7 Subgroup analysis of depression (supplementary material)

Figure 8 Subgroup analysis of anxiety (supplementary material)

Figure 9 Subgroup analysis of stress (supplementary material)

Figure 10 Subgroup analysis of PTSD (supplementary material)

Figure 11 Subgroup analysis of sleep disorders (supplementary material)

Figure 12. Funnel plot of depression

Figure 13. Funnel plot of anxiety

Figure 14. Funnel plot of stress

Figure 15. Funnel plot of PTSD

Figure 16. Funnel plot of sleep disorders (supplementary material)

Figure 17. P-value for residual selection bias of depression

Figure 18. P-value for residual selection bias of anxiety

Figure 19. P-value for residual selection bias of stress

Figure 20. P-value for residual selection bias of PTSD

Figure 21. P-value for residual selection bias of sleep disorders (supplementary material)

Table 3. Summary of sensitivity analysis (supplementary material)

666 **Table 4. P-value of Egger Test for the five mental health symptoms (supplementary**
667 **material)**

PRISMA Flow Diagram

