

# Efficacy of Jiedu Tongluo Tiaogan Formula on Type 2 Diabetic Lower Extremity Arteriosclerosis Obliterans: Study Protocol for a Metabolomics-Based Randomized Controlled Clinical Trial

Tianjiao Liu<sup>1</sup>, Chunli Piao<sup>1\*</sup>, Yuting Peng<sup>1</sup>, Jinghan Xu<sup>1</sup>, Yue Qu<sup>1</sup>, Qi Li<sup>1</sup>, Xiaohua Zhao<sup>1</sup>, Xuemin Wu<sup>1</sup>, Pei Li<sup>1</sup>, Yawen Fan<sup>1</sup>

<sup>1</sup>Institution of Shenzhen Hospital, Guangzhou University of Chinese Medicine (Futian), Shenzhen 518000, Guangdong Province, P.R. China

\* Correspondence:

Chunli Piao

pcl2013@sina.cn

**Keywords:** Jiedu Tongluo Tiaogan Formula, type 2 diabetic mellitus, lower extremity arteriosclerosis obstruction, randomized controlled trial, metabolomics

## Abstract

**Introduction:** Diabetic lower extremity arteriosclerosis obstruction (DLASO) is a common macrovascular complication in type 2 diabetic mellitus (T2DM), which can cause amputations and a higher risk of cardiovascular events. However, there are few effective treatments for DLASO currently. To evaluate the safety and efficacy of Jiedu Tongluo Tiaogan Formula (JTTF) in type 2 diabetic lower extremity arteriosclerosis obliterans and looking for a mechanism of action, we designed a clinical trial and mechanism exploration based on metabolomics technology.

**Methods and Analysis:** This study is designed as a randomized controlled clinical trial. A total of 80 participants will be recruited and randomized to a TCM group (JTTF + essential treatments) and a control group (essential treatments) in a ratio of 1:1. The treatment duration is 12 weeks. Changes in clinical symptom scores, color ultrasound Doppler hemodynamics of lower extremity arteries, and Ankle-Brachial Ratio (ABI) will be the primary outcomes. Changes in TCM symptoms scores, other indicators related to arteriosclerosis, blood glucose, lipids, and body mass will be the secondary outcomes. The primary and secondary outcomes will be evaluated at baseline and week 12. Safety outcomes and adverse events will also be properly assessed. After treatment completion, blood and urine samples from subjects will be

NOTE: This preprint reports new research that has not been certified by peer review and should not be used to guide clinical practice.

**Discussion:** This study aims to verify the efficacy and safety of JTTF in type 2 diabetic lower extremity arteriosclerosis obliterans and obtain the key action pathway. It helps to provide scientific evidence for TCM treatment of diabetic vascular complications.

**Ethics and Dissemination:** This trial has been approved by the Ethics Committee (GZYL(KY)-2021-024). Results of this trial will be published in journals and presented at scientific conferences. We share raw data in the ResMan network platform. All the authors declare that they have no conflicts of interest.

**Trial registration:** Chinese Clinical Trials Register, ChiCTR2100051337. Registered on 20 September 2021.

## INTRODUCTION

Type 2 diabetes mellitus (T2DM) is a chronic metabolic disease often linked to long-term complications. China has the largest population of patients with diabetes worldwide; the prevalence of diabetes among Chinese people aged 18 and over was 11.2%(1). In China, the number of patients with T2DM will be predicted to double in 2030. In economically advanced countries, the increase will be about 50% in 2030(2). The severity of T2DM is that it greatly increases the incidence of cardiovascular disease, cerebrovascular disease, and peripheral macrovascular disease(3). As a large global study shows, microvascular complications accounted for about half the number of diabetic complications (4).

Diabetic lower extremity arteriosclerosis obstruction (DLASO), one of the common macrovascular complications of T2DM, can directly lead to symptoms such as numbness, cold or heat, unbearable pain, and intermittent claudication, etc. Moreover, it can cause lower-extremity ischemic ulcers and amputations, increase the risk of cardiovascular events, and lead to higher mortality (5). It diminishes the health-related quality of life and causes a considerable financial burden to patients. Therefore, exploring the related risk factors and pathogenic mechanisms of type 2 diabetic lower extremity arteriosclerosis obliterans is of great significance, and seeking effective therapeutic drugs.

However, the pathogenesis of DLASO has not been elucidated. The risk factors recognized mainly include age (6), gender (7), smoking, blood sugar(8, 9), blood lipids(10, 11), blood pressure (12), fibrinogen (Fib) (13, 14), serum uric acid (UA) (15), C-reactive protein (CRP) (16), homocysteine (Hcy), cystatin C (CysC) (17). For the mechanism of DLASO, the standard theories include Vascular endothelial injury and smooth muscle cell proliferation theory, lipid infiltration theory, hemodynamic change theory, inflammatory response theory, thrombosis theory, and genetic theory. Presently, there is no specific drug for the treatment of DLASO, and only general hypoglycemic, hypotensive, and lipid-lowering treatments can be given.

Combining Western medicine with traditional Chinese medicine (TCM) has

gradually become the primary approach to treating many diseases. TCM possesses advantages based on its pleiotropic, multi-target, prospective, and stable features that enable it to alleviate T2DM and other complex chronic diseases (18). Under the guidance of TCM theory, Chinese patent medicines used alone or in conjunction with western medicine could successfully lower blood glucose levels and relieve symptoms in patients with diabetes and diabetic complications (19, 20). A clinical study confirmed that Chinese patent medicine (Mudan granule) was effective and safe in the treatment of DLASO and also regulated lipids, dissolved Fib, increased blood flow rate, and dilated blood vessels (21).

Jiedu Tongluo Tiaogan Formula (JTTF), a Chinese patent medicine, consisting of *Coptis chinensis* Franch (Huanglian), *Radix Rhei* Et Rhizome (Dahuang), *Astragalus propinquus* Schischkin (Huangqi), *Salvia miltiorrhiza* Bunge (Danshen), *Bupleuri Radix* (Chaihu), etc. A series of previous studies have confirmed that JTTF can play a role in treating T2DM by enhancing autophagic flux, protecting islet  $\beta$  cells, restoring cellular homeostasis, and reducing insulin resistance in animal and cell experiments(22-25). Relevant clinical trials have also confirmed that JTTF can improve glucose and lipid metabolism disorders in patients with T2DM and reduce insulin resistance (26-28). However, previous studies of JTTF have involved small sample sizes and without clinically registered information. Moreover, there is still a lack of clinical research on diabetes complications, especially the research to verify its mechanism of action through metabolomics technology. For these reasons, high-quality clinical evidence of the safety and efficacy of JTTF in individuals with type 2 diabetic lower extremity arteriosclerosis obliterans is required urgently. To seek an effective therapy for type 2 diabetic lower extremity arteriosclerosis obliterans and to provide new methods and ideas for the clinical prevention and treatment of the disease, we conduct a clinical trial and mechanism exploration based on metabolomics technology. This study aims at presenting the methodologies and full details of the protocol.

## METHODS AND ANALYSIS

### Study Design

This study is designed as a randomized controlled clinical trial following the Helsinki Declaration and the guidelines for good clinical practice. A total of 80 participants who satisfy the inclusion and exclusion criteria and sign the informed consent form will be randomly divided into two groups, which will both be administered essential treatments, consisting of diabetes education, exercise, diet, as well as rational control of blood glucose, blood pressure, lipids. The TCM group will be received the intervention with essential treatments +JTTF (200 ml twice a day). And the control group will be received only essential treatments. The treatment duration is set at 12 weeks. The data in the experiment will be collected using a case report form (CRF) and statistically analyzed by SPSS. After treatment completion, blood and urine samples from 60 subjects in two groups will be tested for metabolomics (Taking into account the cost of metabolomics testing and the

variability of human samples, we select 30 cases in each population group to study the metabolic differences of each group). We hypothesize that JTTF has good efficacy and safety in patients with Type 2 diabetic lower extremity arteriosclerosis obliterans and would like to obtain the key action pathway by analyzing the metabolic changes. The trial schematic flow is illustrated in Figure 1.

## Research Setting

This study will recruit 80 eligible subjects from Shenzhen Hospital (Futian) of Guangzhou University of Chinese Medicine. For all research diagnoses, blood index, and Color Doppler ultrasound tests, Chinese and Western medicine treatments will be carried out in the Shenzhen Hospital (Futian) of Guangzhou University of Chinese Medicine.

## Inclusion Criteria

1. Meet the diagnostic criteria for type 2 diabetes developed by the American Diabetes Association in 2021(29):

(1) Fasting plasma glucose  $\geq 7.0$  mmol/L (126 mg/dl)

- Fasting is defined as no caloric intake for at least 8 h\*

(2) Two-hour plasma glucose  $\geq 11.1$  mmol/L (200 mg/dl) during OGTT

- The OGTT test should be performed as described by WHO using a glucose load containing the equivalent of 75g of anhydrous glucose dissolved in water.\*

(3) HbA1c  $\geq 6.5\%$  (48 mmol/mol).

- The test should be conducted in a laboratory using a method that is National Glycohemoglobin Standardization Program certified and standardized to the Diabetes Control and Complications Trial assay.\*

(4) In patients with typical symptoms of hyperglycemia or hyperglycemic crisis, a random plasma glucose  $\geq 11.1$  mmol/L (200 mg/dl).

\* If any of the above four items meet the standard and also meet the standard in repeated testing on the following day, T2DM can be diagnosed.

2. Meet the diagnostic criteria for lower extremity arteriosclerosis obliterans issued by the Vascular Surgery Group of the Chinese Society of Surgery in 2016 (30):

(1) The age of onset is usually more than 40 years old;

(2) Have high-risk factors such as smoking, diabetes, hypertension, hyperlipidemia;

(3) Clinical manifestations of lower extremity arterial occlusive disease, such as intermittent claudication, rest pain, decreased extremity skin temperature, hair loss, etc.;

(4) The arterial pulse of the distal limbs weakens or disappears;

(5) ABI  $\leq 0.9$ ;

(6) Color Doppler ultrasound, CTA, MRA, DSA, and other imaging examinations show the stenosis or occlusion of corresponding arteries.

\* If the first four criteria are met, the clinical diagnosis of ASO can be made. ABI and color ultrasound can determine the degree of ischemia in the lower extremity.

3. According to the Guidelines for Clinical Research of Chinese Medicine (New Drug) (31), a patient with at least two of the primary symptoms and more than two of the secondary symptoms listed below to be diagnosed with Qi deficiency and collaterals obstruction syndrome:

(1) Primary symptoms and signs: ① numbness; ② pain; ③ paresthesia

(2) Secondary symptoms and signs: ① scaly dry skin; ② dim complexion; ③ fatigue; ④ Shortage of Qi and lackadaisical; ⑤ spontaneous sweating

(3) Tongue condition: light-dark/petechiae tongue, with thin and white coating.

(4) Pulse condition: thin and blocked pulse.

4. Aged over 18 years including male and female;

5. Not suffering from severe cardiovascular and cerebrovascular diseases, such as stroke, coronary heart disease, myocardial infarction;

6. Liver and kidney function tests normal;

7. Agree and sign the informed consent form.

### **Exclusion Criteria**

1. Not meeting the diagnostic criteria of T2DM, lower extremity ASO, and TCM syndrome of Qi deficiency and collaterals obstruction syndrome;

2. Type 1 diabetes mellitus (T1DM) or latent autoimmune diabetes in adults (LADA) patients;

3. Under the age of 18;

4. Patients with comorbidities such as cardiovascular, renal, hepatic, and hematopoietic system and other severe primary diseases, severe coagulation mechanism disorder, mental illness, or other conditions that may affect clinical research as judged by the investigator;

5. Severe intermittent claudication affects the life quality of the patient, and the conservative treatment is not practical, or there is severe ischemia, necrosis, or infection in the limbs, and those who meet the indications for surgery;

6. Patients are pregnant or breastfeeding or planning to become pregnant within 6 months;

7. Severe allergic constitution, known or possible allergy to the test drug or its components;

8. Those who have participated in other clinical trials in the past 3 months.

## **Withdrawal Criteria**

### **The Withdrawal Decided by the Researcher**

The researcher can decide to withdraw a subject from the study under the following circumstances:

1. During the study, the subjects may develop severe complications or pathological changes (such as allergy, abnormal renal and liver function, hospitalization, and other adverse events) that are not appropriate for this study;
2. During the study, the subjects may have poor adherence to medications (for example, the use of drugs does not reach 50% or exceeds 50% of the prescribed dose);
3. Other treatment drugs were added without following the researcher's guidance during the entire study period.

### **Subjects Withdrawal at Their Own Will**

According to the informed consent form, subjects have the right to withdraw from the trial at any point. Subjects who do not formally withdraw from the trial but no longer receive drugs and undergo testing or who are lost to follow-up are also regarded as withdrawn. Understand the reasons for their withdrawal as much as possible and record them (such as perceived poor curative effect, intolerable to some adverse reactions, and economic factors).

Case record forms (CRF) should be kept for cases withdrawn from the study, regardless of the reason.

## **Randomization**

Statisticians not involved in the experiment will be asked to create a table of random numbers on a computer. Patients successfully enrolled in this study will be assigned to either the treatment or control groups in a ratio of 1:1. The random serial number will be sealed in an opaque envelope and provided only to clinicians so that participants can be assigned treatment plans accordingly. Since this trial is an open-label study, the participants and physicians will be aware of the allocation protocol, and data analysts and statisticians will not know the distribution results.

## **Sample Size Calculation**

Based on the previous study (28), JTTF reduced HbA1c levels in T2DM patients with liver and stomach heat accumulation syndrome after 12 weeks of treatment; the treatment group was  $6.94 \pm 0.67$ , and the control group was  $7.50 \pm 0.92$ , and the mean difference between these two groups was 0.56. Considering the type I error of 5% ( $\alpha = 0.05$ ) and a power of 90% ( $1 - \beta = 0.9$ ,  $\beta = 0.1$ ), the experimental group and the control group were allocated 1:1. The sample size was calculated by the Power Analysis and Sample Size (PASS) software (version 15.0). A total of 64 patients will be needed. According to the dropout rate of 20%, we set the final sample size as 80, with 40 patients in each group, taking into account the number of dropout samples.

## **Interventional Methods**

All included subjects will accept essential treatment, including diabetes



education, exercise, diet, as well as rational control of blood glucose, blood pressure, and lipids, according to the 2020 diagnosis and treatment guidelines for T2DM in China (1) and the 2021 American Diabetes Association guidelines (29). Subjects will be randomly allocated to either the TCM group (JTTF, including Coptis chinensis Franch (Huanglian), Radix Rhei Et Rhizome (Dahuang), Astragalus propinquus Schischkin (Huangqi), Salvia miltiorrhiza Bunge (Danshen), Bupleuri Radix (Chaihu), etc., 200 ml twice a day) or the control group (only essential treatment). Treatment will continue for 12 weeks.

### **Outcome Assessment**

We use the case report form (CRF) to collect demographic Information and efficacy outcomes, including primary and secondary outcomes, safety outcomes, and adverse events.

All efficacy outcomes measurements will be performed at baseline and week 12. Safety outcomes and Adverse Events assessment will be performed at baseline, week 6, and week 12. The time point and study period are shown in Figure 2.

### **Demographic Information**

Demographic information such as gender, age, height, weight, course of the disease, previous medical history, allergy history, family medical history will be collected.

### **Primary Outcomes**

The primary outcome of the study is the changes in mainly indicators associated with diabetic atherosclerosis:

- 1.Changes in clinical symptom scores(Additional file 1, according to The curative effect standard of ASO made by Peripheral Vascular Committee of China Association of Chinese Medicine,2002);
- 2.Changes in color ultrasound Doppler hemodynamics of lower extremity arteries (Inner diameter of common femoral artery, popliteal artery, anterior tibial artery, and dorsal pedis artery);
- 3.Changes in Ankle-Brachial Ratio (ABI).

### **Secondary Outcomes**

Changes in TCM symptoms scores, other indicators related to arteriosclerosis, and indicators associated with blood glucose, lipids, body mass:

- 1.Changes in TCM symptoms scores (Additional file 2, according to Guidelines for Clinical Research of Chinese Medicine (New Drug),2002);
- 2.Changes in other indicators related to arteriosclerosis: C-Reactive Protein (CRP), Homocysteine (Hcy), blood Uric Acid (UA), Cystatin C (CysC), Fibrinogen (Fbg) levels;
- 3.Changes in indicators associated with blood glucose: Fasting Blood Glucose, Glycosylated Hemoglobin (HbA1c) levels;
- 4.Changes in indicators associated with lipids: Cholesterol (CHOL), Triglyceride

(TG), Low-Density Lipoprotein Cholesterol (LDL-c), High-Density Lipoprotein Cholesterol (HDL-c) levels;

5.Changes in Body Mass Index (BMI) levels.

Clinical symptom scores will be measured with additional file 1, and TCM symptoms scores will be measured with Additional file 2. A professional sonographer will perform a color ultrasound Doppler test and vascular diameter measurement. ABI test and BMI (weight (kg) / Height (m)<sup>2</sup>) measurement will be performed by the endocrinologist. Patients should keep fasting for at least 8 hours before the blood test.

### **Safety Outcomes and Adverse Events**

1.Adverse events: adverse events such as diarrhea, nausea, vomiting, severe allergies, hospitalization, or surgery, will be carefully recorded at any time. The intensity of adverse events will be categorized as light, moderate and heavy. Serious adverse events (SAE) must be reported immediately to the hospital's ethics committee, and the subjects should receive complementary clinical treatment. At the same time, it will be reported to the National Medicinal Product Administration (NMPA) within 24 h.

2.General vital signs (such as body temperature, heart rate, respiration);

3.Blood routine, urine routine, 12-lead Electrocardiography, liver and kidney function tests.

### **Data Analysis**

The data collected in the experiment will be statistically analyzed by SPSS(version 24.0). According to the specific values of each index, the Kolmogorov-Smirnov test is used to determine whether it conforms to the normal distribution. Suppose the index conforms to the normal distribution. In that case, the results will be expressed in the form of mean  $\pm$  standard deviation ( $X \pm S$ ), the independent sample T-test is used to judge the difference between the two groups, and the paired sample T-test is used to judge the difference between each group before and after the intervention. If the index does not conform to the normal distribution, the  $\chi^2$  test and Fisher's exact test are used to judge the difference between the two groups. Spearman correlation analysis is used to test the correlation of each index. All statistical tests will be two-sided;  $p < 0.05$  will be considered statistically significant. For missing data, we delete them or use methods like multiple imputation for data processing.

### **Metabolomics Test**

#### **Sample Collection**

There were 30 healthy control groups (No history of major diseases of the heart, brain, liver, kidney, and other vital organs, no diabetes), 30 type 2 diabetes groups (No



lower extremity arteriosclerosis obliterans), 30 TCM groups (JTTF), and 30 control groups, a total of 120 subjects. Blood samples were collected from the subjects, of which the traditional Chinese medicine treatment group and the control group were collected before and after treatment, with a total of 180 samples.

Venous blood (4 ml) and midstream urine (10 ml) samples were collected from each patient after overnight fasting. All samples were collected at approximately the same time each day (between 8 and 10 am every day). The collected blood samples were left standing for 30 minutes at room temperature and then placed in a centrifuge. The specific parameters were a temperature 4°C, a rotation speed of 3000 rpm, and a centrifugation time of 5-10 minutes to separate serum. Pipette an equal volume of supernatant 1ml and place them in marked 1.5ml sterile EP tubes. Immediately store serum and urine samples in a -80°C refrigerator after dispensing.

### **Metabolomics Analysis Process**

After the sample was dissolved, add 400µl (methanol solution) to the sample, vortex for 1 minute, mix well, and then centrifuge at 12,000 rpm for 10 minutes (4°C). Take 200 µl of the supernatant and place it in a vacuum centrifugal concentrator to concentrate and drain the water. To be tested, take 20 µl from each sample and mix it to form a QC sample.

After obtaining the raw data, follow the following steps to process the data: First, the raw data of the mass spectrometer needs to be preprocessed, including extracting the peak list information and using the QC sample information based on the actual sample signal. The local polynomial regression fitting signal correction (Quality control-based robust LOESS signal correction, QC-RSC) method was used to process the data. Then, the differentially expressed metabolites under different treatment conditions were found through statistical analysis, and the metabolic pathway analysis was carried out.

### **Patient and Public Involvement statement**

In the research, patients and the public are only being participants. We do not have involvement from patients or members of the public in the designor conduct, or reporting, or dissemination plans of the research.

## **DISCUSSION**

T2DM is one of the most harmful chronic diseases in the 21st century due to its many complications, low cure rate, and management challenges. Nevertheless, T2DM may be treatable with TCM formulations based on highly intuitive principles for achieving clinically curative effects that have shown to be effective in clinical practice.

TCM treats diseases based on the viewpoint that recognizes the interconnectedness of all body systems. In the theory of TCM, DLASO is related to the poor circulation of qi, blood, body fluids, and the obstruction of the meridians.

One TCM agent, JTTF, was formulated based on TCM theory. JTTF mainly consists of five herbal medicines, namely *Coptis chinensis* Franch (Huanglian), *Radix Rhei Et Rhizome* (Dahuang), *Astragalus propinquus* Schischkin (Huangqi), *Salvia miltiorrhiza* Bunge (Danshen), *Bupleuri Radix* (Chaihu), which are combined in relative proportions by weight of 15:9:15:15:10, respectively. Pharmacological studies confirmed that Huanglian could effectively inhibit gluconeogenesis and promote glycolysis to achieve the effect of lowering blood sugar (32). Dahuang can reduce serum cholesterol and increase high-density lipoprotein, delaying fatty liver (33). Huangqi has a two-way regulation function on blood sugar and has a good effect on the treatment of diabetes and its chronic complications (34). Danshen has anti-platelet aggregation and anti-oxidation effects and has a good effect on the treatment of coronary heart disease(35). Chaihu has good anti-inflammatory, anti-fatty liver, and anti-liver damage effects(36). Results of the previous study suggested that JTTF could inhibit the production of inflammation-inducing factors in a multi-target manner, promote the secretion of adiponectin, reduce the inflammatory response of adipocytes, and alleviate endoplasmic reticulum stress (24). In addition, JTTF can alleviate insulin resistance and reduce apoptosis while further increasing glucose and lipid metabolism in the treatment of T2DM rats (25). However, the efficacy and mechanism of JTTF in treating T2DM complications, especially in DLASO, remain unclear. Thus, designing and conducting a high-quality clinical trial to assess the efficacy and safety and to seek the mechanism of JTTF in treating DLASO is of great value.

This study aims to verify the efficacy and safety of JTTF in patients with type 2 diabetic lower extremity arteriosclerosis obliterans through prospective clinical studies. Meanwhile, we use metabolomics technology to obtain the key action pathway of JTTF in treating type 2 diabetic lower extremity arteriosclerosis obliterans. Metabolomics is an emerging discipline with rapidity, accuracy, high resolution, high sensitivity, and a small number of samples required. Therefore, it is an effective method for discovering disease-related biomarkers(37). In recent years, more and more studies about metabolites determined the possible biomarkers and their metabolic pathways according to their differences, providing an essential theoretical basis for the effective prevention and treatment of T2DM(38). In this study, researchers perform overall profile detection and analysis of endogenous small-molecule metabolite intermediates and end products in biological samples under physiological and pathological conditions. It helps to correlate better the abstract description of TCM with objective biological parameters and provides an overall systematic research method and modern scientific evidence for TCM syndrome differentiation and treatment.

However, this study also has certain limitations. Firstly, this trial was not blinded. Lower extremity arteriosclerosis obliterans increase the risk of diabetic foot and amputation. In order not to delay the treatment of patients, this study did not use a placebo control. Secondly, patients aged younger than 18 years were not included in this research. The occurrence of lower extremity arteriosclerosis obliterans is related to the course of diabetes. Few patients are in this age group. Additionally, considering

medication safety for underage patients, we decided to exclude this specific population from the study.

## **ETHICS AND DISSEMINATION**

### **Ethics Statement**

This trial has been approved by the Ethics Committee (Shenzhen Hospital (Futian) of Guangzhou University of Chinese Medicine). The approval number is GZYLL(KY)-2021-024. Written informed consent for the collection and use of participant data and biological specimens will be obtained from all the participants enrolled. Before signing the informed consent form, the researcher illustrates the procedure, potential risks, and benefits of participating in this research. Researchers will have access to the final trial dataset, and all personal information of participants is kept confidential during and after the trial.

### **Dissemination and Consent for Publication**

Results of this trial will be published in peer-reviewed journals and presented at scientific conferences. All subjects were asked for permission to publish the study results and assured of anonymity and confidentiality.

### **Data Sharing**

We share raw data from trials, including technical appendix, statistical code, and study dataset available from the ResMan network platform (<https://www.chictr.org.cn/edit.aspx?pid=134097&htm=4>).

### **Research Monitoring**

This study will be conducted under the supervision of the GCP(Good Clinical Practice) Office of Guangzhou University of Traditional Chinese Medicine Shenzhen Hospital (Futian), the GCP office will review the progress of the study, patient enrollment, and funding use on a monthly basis. The process will be independent from investigators and the sponsor.

### **Trial Status**

The trial was registered with the Chinese Clinical Trials Register (ChiCTR2100051337) on 20 September 2021 (<https://www.chictr.org.cn/edit.aspx?pid=134097&htm=4>). Patients are being recruited continuously from October 2021 to the present. 50 subjects have completed the 12-week intervention. The follow-up visits are expected to be completed in September 2022. Metabolomics testing will be completed by November 2022. The anticipated start date for the analysis is December 2022 and completed in January 2023.

### **Author Contributions**

Tianjiao Liu and Chunli Piao contributed equally to this work and are the co-first

author. Chunli Piao and Tianjiao Liu conceived and designed the research methods. Chunli Piao obtained funding. Tianjiao Liu and Yuting Peng collected the data and drafted the manuscript. Tianjiao Liu, Jinghan Xu, and Yawen Fan analyzed the data. Qi Li, Xiaohua Zhao, Xuemin Wu, and Pei Li carried out the experimental validation. All authors read and approved the final manuscript.

### **Competing Interests:**

All authors have completed the ICMJE uniform disclosure form at [http://www.icmje.org/coi\\_disclosure.pdf](http://www.icmje.org/coi_disclosure.pdf) and declare: no support from any organization for the submitted work; no financial relationships with any organization that might have an interest in the submitted work in the previous three years, no other relationships or activities that could appear to have influenced the submitted work.

### **Funding**

Chunli Piao was supported by the National Natural Science Foundation of China (grant number: 81973813), the Scientific research project of Traditional Chinese Medicine Bureau of Guangdong Province (grant number: 20221329), and Shenzhen Science and Technology Innovation Program (grant number: JCY20190809110015528). The funder was not involved in the study design, collection, analysis, interpretation of data, the writing of this article, or the decision to submit it for publication.

### **REFERENCE**

1. Society CD. Guideline for the Prevention and Treatment of Type 2 Diabetes Mellitus in China (2020 Edition). Chin J Diabetes Mellitus (2021) 37(4).
2. Chen D, Taylor KP, Hall Q, Kaplan JM. The Neuropeptides Flp-2 and Pdf-1 Act in Concert to Arouse Caenorhabditis Elegans Locomotion. Genetics (2016) 204(3):1151-9. Epub 2016/09/03. doi: 10.1534/genetics.116.192898.
3. Viigimaa M, Sachinidis A, Toumpourleka M, Koutsampasopoulos K, Alliksoo S, Titma T. Macrovascular Complications of Type 2 Diabetes Mellitus. Curr Vasc Pharmacol (2020) 18(2):110-6. Epub 2019/04/10. doi: 10.2174/1570161117666190405165151.
4. Cheema S, Maisonneuve P, Zirie M, Jayyousi A, Alrouh H, Abraham A, et al. Risk Factors for Microvascular Complications of Diabetes in a High-Risk Middle East Population. J Diabetes Res (2018) 2018:8964027. Epub 2018/07/31. doi: 10.1155/2018/8964027.
5. Kaminski MR, Raspovic A, McMahon LP, Strippoli GF, Palmer SC, Ruospo M, et al. Risk Factors for Foot Ulceration and Lower Extremity Amputation in Adults with End-Stage Renal Disease on Dialysis: A Systematic Review and Meta-Analysis. Nephrol Dial Transplant (2015) 30(10):1747-66. Epub 2015/05/07. doi: 10.1093/ndt/gfv114.
6. Hu GL, Liu J, Liu J, Hao YC, Yang N, Zhou MG, et al. [Association between

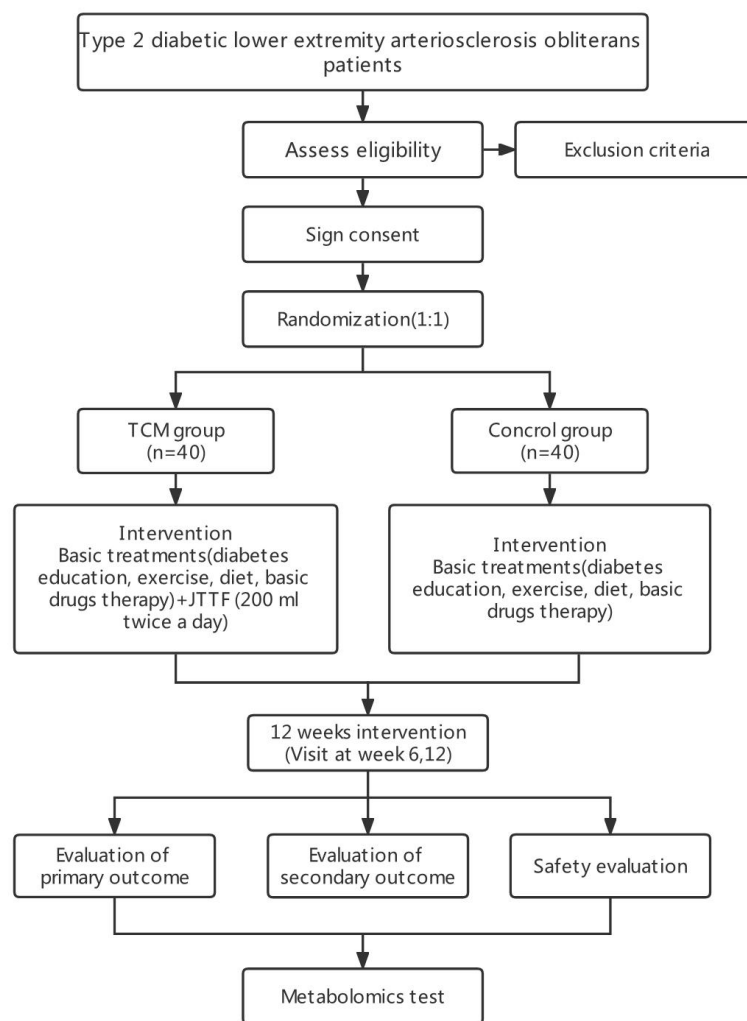
- Smoking and the Severity of Coronary Lesions among Young and Middle-Aged Female Patients with Acute Coronary Syndrome]. *Zhonghua xin xue guan bing za zhi* (2020) 48(5):378-85. Epub 2020/05/27. doi: 10.3760/cma.j.cn112148-20191115-00702.
7. Cai G, Liu W, Lv S, Wang X, Guo Y, Yan Z, et al. Gender-Specific Associations between Atherogenic Index of Plasma and the Presence and Severity of Acute Coronary Syndrome in Very Young Adults: A Hospital-Based Observational Study. *Lipids Health Dis* (2019) 18(1):99. Epub 2019/04/17. doi: 10.1186/s12944-019-1043-2.
  8. Jandeleit-Dahm K, Cooper ME. The Role of Ages in Cardiovascular Disease. *Curr Pharm Des* (2008) 14(10):979-86. Epub 2008/05/14. doi: 10.2174/138161208784139684.
  9. Renard C, Chappey O, Wautier MP, Nagashima M, Lundh E, Morser J, et al. Recombinant Advanced Glycation End Product Receptor Pharmacokinetics in Normal and Diabetic Rats. *Molecular pharmacology* (1997) 52(1):54-62. Epub 1997/07/01. doi: 10.1124/mol.52.1.54.
  10. Dobiášová M, Frohlich J. The Plasma Parameter Log (Tg/Hdl-C) as an Atherogenic Index: Correlation with Lipoprotein Particle Size and Esterification Rate in Apob-Lipoprotein-Depleted Plasma (Fer(Hdl)). *Clinical biochemistry* (2001) 34(7):583-8. Epub 2001/12/12. doi: 10.1016/s0009-9120(01)00263-6.
  11. Vekic J, Zeljkovic A, Cicero AFG, Janez A, Stoian AP, Sonmez A, et al. Atherosclerosis Development and Progression: The Role of Atherogenic Small, Dense Ldl. *Medicina (Kaunas)* (2022) 58(2). Epub 2022/02/26. doi: 10.3390/medicina58020299.
  12. Puneet P, Moomhala S, Bhatia M. Chemokines in Acute Respiratory Distress Syndrome. *American journal of physiology Lung cellular and molecular physiology* (2005) 288(1):L3-15. Epub 2004/12/14. doi: 10.1152/ajplung.00405.2003.
  13. Loukas M, Dabrowski M, Wagner T, Walczak E, Witkowski A, Ruzyllo W. Fibrinogen and Smooth Muscle Cell Detection in Atherosclerotic Plaques from Stable and Unstable Angina -- an Immunohistochemical Study. *Med Sci Monit* (2002) 8(4):Br144-8. Epub 2002/04/16.
  14. Danesh J, Lewington S, Thompson SG, Lowe GD, Collins R, Kostis JB, et al. Plasma Fibrinogen Level and the Risk of Major Cardiovascular Diseases and Nonvascular Mortality: An Individual Participant Meta-Analysis. *Jama* (2005) 294(14):1799-809. Epub 2005/10/13. doi: 10.1001/jama.294.14.1799.
  15. Kanellis J, Kang DH. Uric Acid as a Mediator of Endothelial Dysfunction, Inflammation, and Vascular Disease. *Semin Nephrol* (2005) 25(1):39-42. Epub 2005/01/22. doi: 10.1016/j.semnephrol.2004.09.007.
  16. Torzewski J. C-Reactive Protein and Atherogenesis: New Insights from Established Animal Models. *The American journal of pathology* (2005) 167(4):923-5. Epub 2005/09/30. doi: 10.1016/s0002-9440(10)61182-0.
  17. Chen T, Li Y, Wang J, Wang J. Correlation among Cystatin C, Homocysteine and Arteriosclerosis Indexes in Patients with Chronic Kidney Disease. *Zhong nan da xue xue bao Yi xue ban = Journal of Central South University Medical sciences* (2021)

- 46(12):1338-45. Epub 2022/03/03. doi: 10.11817/j.issn.1672-7347.2021.210059.
18. Zhang Q, Piao C, Jin W, Jin D, Wang H, Tang C, et al. Decoding the Chemical Composition and Pharmacological Mechanisms of Jiedu Tongluo Tiaogan Formula Using High-Performance Liquid Chromatography Coupled with Network Pharmacology-Based Investigation. *Aging* (2021) 13(21):24290-312. Epub 2021/11/07. doi: 10.18632/aging.203679.
19. Lian F, Tian J, Chen X, Li Z, Piao C, Guo J, et al. The Efficacy and Safety of Chinese Herbal Medicine Jinlida as Add-on Medication in Type 2 Diabetes Patients Ineffectively Managed by Metformin Monotherapy: A Double-Blind, Randomized, Placebo-Controlled, Multicenter Trial. *PLoS One* (2015) 10(6):e0130550. Epub 2015/06/23. doi: 10.1371/journal.pone.0130550.
20. Lian F, Wu L, Tian J, Jin M, Zhou S, Zhao M, et al. The Effectiveness and Safety of a Danshen-Containing Chinese Herbal Medicine for Diabetic Retinopathy: A Randomized, Double-Blind, Placebo-Controlled Multicenter Clinical Trial. *J Ethnopharmacol* (2015) 164:71-7. Epub 2015/02/11. doi: 10.1016/j.jep.2015.01.048.
21. Wang N YS, Liu Y. Clinical Study of Mudan Granules in the Treatment of Diabetes and Lower Extremity Arteriosclerosis Obliterans. *Journal of Liaoning University of Traditional Chinese Medicine*:1-15.
22. Jin M-Y, Piao C-L, Zhao Z-W, Mi J, Liu X-R, Chen X. The Optimal Modelling Time of Zdf Rat Model of Type 2 Diabetes and the Intervention Effect of Jiedu Tongluo Tiaogan Formula. *Chinese Journal of Gerontology* (2018) 38(01):3-6.
23. Sun Z-Y, Piao C-L, Jia M, Jiang X-T, Cheng T, Li W. Effects of Jiedu Tongluo Tiaogan Formula on the Expression of Ire1-Related Protein in Liver Tissue of Type 2 Diabetic Rats. *Chinese Journal of Gerontology* (2019) 39(08):1915-8.
24. Jiang X-T, Piao C-L, Jia M, Jin M-Y, Liu X-R, Pan W-W. Effects of Jiedu Tongluo Tiaogan Formula on the Endoplasmic Reticulum Stress and Inflammation of Adipocytes. *Journal of Beijing University of Traditional Chinese Medicine* (2018) 41(12):1012-8+24.
25. Piao C-L, Jin M-Y, Zhao ZJ, Jia M, Liu X-R, Xi C. Effect of Jiedu Tongluo Tiaogan Formula on Expression of Ire1 / Jnk Pathway Related Proteins in Pancreas of Zdf Rats with Type 2 Diabetes Mellitus. *Chinese Archives of Traditional Chinese Medicine* (2018) 36(01):11-3. doi: 10.13193/j.issn.1673-7717.2018.01.002.
26. Gong C. Clinical Observation of Jiedu Tongluo Tiaogan Formula in the Treatment of Obese Patients with Type 2 Diabetes Mellitus and Non-Alcoholic Fatty Liver [master's thesis]: Changchun University of Traditional Chinese Medicine (2017).
27. Yu M. Clinical Study on the Improvement of Glucose and Lipid Metabolism in Obese Patients with Type 2 Diabetes by Modified Jiedu Tongluo Tiaogan Formula [master's thesis]: Changchun University of Traditional Chinese Medicine (2017).
28. Sun Z-Y. Effects of Jiedu Tongluo Tiaogan Formula on Serum Fgf21 in Patients with Type 2 Diabetes (Liver-Stomach Stagnation and Heat Syndrome) [master's thesis]: Changchun University of Traditional Chinese Medicine (2019).
29. 2. Classification and Diagnosis of Diabetes: Standards of Medical Care in Diabetes-2021. *Diabetes Care* (2021) 44(Suppl 1):S15-s33. Epub 2020/12/11. doi: 10.2337/dc21-S002.



30. Guidelines for the Diagnosis and Treatment of Lower Extremity Arteriosclerosis Obliterans. Chinese General Surgery Literature (Electronic Edition) (2016) 10(01):1-18.
31. Zheng X-Y. Guidelines for Clinical Research of Chinese Medicine (New Drug): Beijing: Chinese Medicine and Science Publication House (2002). 392 p.
32. Liu H-L, Tan D-Y, Huang M, Chen P-P, Zhang W. Based on Network Pharmacology and Molecular Docking to Explore the Mechanism of Huanglian Treatment of Type 2 Diabetes Mellitus. Journal of Rehabilitation (2021) 31(06):485-94.
33. Pan Y-X. Progress in Pharmacological Action and Clinical Application of Rhubarb. Chinese urban and rural enterprise hygiene (2021) 36(6):20-2. doi: 10.16286/j.1003-5052.2021.06.007.
34. Liu Y, Zhang J, Deng Y, Ren H-M, Xia L-T, Liu M-M, et al. Research Progress on Extraction, Separation and Purification of Astragalus Polysaccharides and Their Pharmacological Effects. China Journal of Traditional Chinese Medicine (2021) 36(10):6035-8.
35. Feng K-R, Li W-X, Wang X-Y, Wu Y-L, Zhang H, Liu X-L, et al. Predictive Analysis of Chemical Constituents, Pharmacological Effects and Quality Markers (Q-Marker) of Salvia Miltiorrhiza. Chinese Herbal Medicine (2022) 53(02):609-18.
36. Li Y-Y, Lei G-P, Dong S, Feng G-Q. Research Progress on Modern Pharmacological Effects of Bupleurum Chinensis. Journal of Hainan Medical College:1-15. doi: 10.13210/j.cnki.jhmu.20210514.005.
37. Milburn MV, Lawton KA. Application of Metabolomics to Diagnosis of Insulin Resistance. Annu Rev Med (2013) 64:291-305. Epub 2013/01/19. doi: 10.1146/annurev-med-061511-134747.
38. Zheng X-L, Ding D-F, You N. Research Progress of Metabolomics in Type 2 Diabetes. Journal of Postgraduate Medicine (2021) 34(01):97-101. doi: 10.16571/j.cnki.1008-8199.2021.01.018.

**Figure 1.** The trial schematic flow



**Figure 2.** Time Point and Study Period

Time point Study period	Baseline	Visit 1 6 weeks $\pm$ 7days Medication	Visit 2 12weeks $\pm$ 7 days Medication
<b>Enrollment</b>			
Eligibility screening	×		
Random grouping	×		
Informed Consent Form	×		
<b>Demographic Information Collection</b>			
Gender and age	×		
Height and weight	×		×
Course of the disease	×		
Medical history	×		
Vital signs	×	×	×
Allergy history	×		
Family medical history	×		
<b>Efficacy Outcomes Measurements</b>			
Clinical symptom scores	×		×
TCM symptoms scores	×		×
Color ultrasound Doppler hemodynamics	×		×
Ankle-brachial ratio (ABI)	×		×
C-Reactive Protein (CRP)	×		×
Homocysteine (Hcy)	×		×
Blood Uric Acid (UA)	×		×
Cystatin C (CysC)	×		×
Fibrinogen (Fbg)	×		×
Fasting Blood Glucose	×		×
Glycosylated Hemoglobin (HbA1c)	×		×
Cholesterol (CHOL)	×		×
Triglyceride (TG)	×		×
Low-Density Lipoprotein Cholesterol (LDL-c)	×		×
High-Density Lipoprotein Cholesterol (HDL-c)	×		×
Body Mass Index (BMI)	×		×
<b>Safety Outcomes Measurements</b>			
Blood routine	×	×	×
Urine routine	×	×	×
Electrocardiography	×	×	×
Liver and kidney function tests	×	×	×
Adverse event records (if any)	×	×	×
<b>Blood and Urine Sample Collection</b>	×		×

# **Additional File 1. Changes in clinical symptom scores**

Symptom	Score	Scoring criteria	
cold limbs	□	No cooling of limbs	0 point
		The limbs sometimes get cold	1 point
		Persistent chills or relieved by wearing more than ordinary people	2 points
		Persistent cold or wearing more clothes than ordinary people still feel cold	3 points
		Wearing more clothes than ordinary people still feel cold	4 points
Limb soreness	□	No soreness of the limbs	0 point
		Limbs are sore or swollen when the activity increases compared to normal	1 point
		Sometimes sore or bloated	2 points
		Persistent sore or bloated	3 points
		Unbearable soreness	4 points
Limb tingling and numbness	□	No tingling or numbness in limbs	0 point
		Tingling or numbness when the activity level increases	1 point
		Sometimes tingling or numbness	2 points
		Persistent tingling	3 points
		persistent numbness	4 points
Intermittent claudication	□	Walking $\geq 1500\text{m}$ without discomfort	0 point
		Walking $\geq 1000\text{m}$ , local discomfort	1 point
		Discomfort when walking $\geq 500\text{m}$	2 points
		Discomfort when walking $\geq 100\text{m}$	3 points
		Discomfort when walking $\leq 100\text{m}$	4 points
Rest pain	□	Discomfort with activity	5 points
		No rest pain	0 point
		Rest pain after fatigue	1 point
		Sometimes rest pain	2 points
		The rest pain is tolerable	3 points
Burning sensation	□	Rest pain is unbearable, can't sleep	4 points
		No burning sensation	0 point
		Sometimes feel burning	1 point
		Feel burning at night or during the day	2 points
		Persistent burning	3 points
Lower skin temperature	□	Persistent burning, and it is unbearable	4 points
		Normal skin temperature	0 point
		Sometimes feel cooling	1 point
		Persistently feel cooling	2 points
		Persistently cold	3 points
abnormal tone	□	unbearable cold	4 points
		Normal skin tone	0 point
		Sometimes pale or yellow	1 point
		Persistent pallor or yellow	2 points

		Cyanotic skin	3 points
		Atropurpureus or purple brown spot	4 points
Ulcer size	<input type="checkbox"/>	Ulcer healed	0 point
		Ulcer scab is not removed	1 point
		Ulcer diameter <1cm	2 points
		Ulcer diameter 1 ~ 2cm (excluding 2cm)	3 points
		Ulcer diameter 2 ~ 3cm (excluding 3cm)	4 points
		(And so on, for non-graphic wounds, divide the sum of the long and short diameters by 2)	
Ulcer depth	<input type="checkbox"/>	Ulcer healed	0 point
		Ulcer in cortex	1 point
		Ulcer in subcutaneous muscle	2 points
		Ulcer deep in muscle	3 points
		Ulcer between muscle and tendon bone	4 points
toenail	<input type="checkbox"/>	Normal toenails	0 point
		Mild thickening of toenails	1 point
		Toenails are obviously thickened and not deformed	2 points
		Thickened and deformed toenails	3 points
fine hair	<input type="checkbox"/>	Normal hair	0 point
		Sparse hair	1 point
		Visibly sparse fine hair	2 points
		Hair shedding	3 points
Finger pressure test	<input type="checkbox"/>	Skin tone recovers within 1-2 seconds after acupressure	0 point
		Color recovery after acupressure > 2 seconds	1 point
		Acupressure does not change color	2 points
limb elevation test	<input type="checkbox"/>	No change in foot complexion	0 point
		Pale red or dark skin tone on the feet	1 point
		Pale complexion on the feet	2 points
		Pale complexion with obvious discomfort on the feet	3 points
		Pale complexion with pain	4 points
The recovery time of skin color	<input type="checkbox"/>	The recovery time of skin color < 10 seconds	0 point
		The recovery time of skin color is 10 ~ 40 seconds	1 point
		The recovery time of skin color is 40 ~ 60 seconds	2 points
		The recovery time of skin color is 60 seconds ~ 2 minutes	3 points
		The recovery time of skin color > 2 minutes	4 points
The filling time of the foot dorsal vein	<input type="checkbox"/>	The filling time of the dorsal vein of foot is 5 to 10 seconds	0 point
		The filling time of the dorsal vein of foot is 10 to 60 seconds	1 point
		The filling time of the dorsal vein of foot is 1 to 3 minutes	2 points
		The filling time of the dorsal vein of foot ≥ 3 minutes	3 points
Dorsalis pedis artery pulsation	<input type="checkbox"/>	Normal arterial pulse	0 point
		Decreased arterial pulse	1 point
		Very weak arterial pulse	2 points
		Arterial pulse disappeared	3 points
Posterior tibial	<input type="checkbox"/>	Normal arterial pulse	0 point

artery pulse		Decreased arterial pulse	1 point
		Very weak arterial pulse	2 points
		Arterial pulse disappeared	3 points
popliteal pulse	<input type="checkbox"/>	Normal arterial pulse	0 point
		Decreased arterial pulse	1 point
		Very weak arterial pulse	2 points
		Arterial pulse disappeared	3 points
		Normal arterial pulse	0 point
		Decreased arterial pulse	1 point
Femoral pulse	<input type="checkbox"/>	Very weak arterial pulse	2 points
		Arterial pulse disappeared	3 points
Symptom	Score	Scoring criteria	
cold limbs	<input type="checkbox"/>	No cooling of limbs	0 point
		The limbs sometimes get cold	1point
		Persistent chills or relieved by wearing more than ordinary people	2points
		Persistent cold or wearing more clothes than ordinary people still feel cold	3 points
		Wearing more clothes than ordinaryl people still feel cold	4 points
Limb soreness	<input type="checkbox"/>	No soreness of the limbs	0 point
		Limbs are sore or swollen when the activity increases compared to normal	1 point
		Sometimes sore or bloated	2 points
		Persistent sore or bloated	3 points
		Unbearable soreness	4 points
Limb tingling and numbness	<input type="checkbox"/>	No tingling or numbness in limbs	0 point
		Tingling or numbness when the activity level increases	1 point
		Sometimes tingling or numbness	2 points
		Persistent tingling	3 points
		persistent numbness	4 points
Intermittent claudication	<input type="checkbox"/>	Walking $\geq 1500\text{m}$ without discomfort	0 point
		Walking $\geq 1000\text{m}$ , local discomfort	1 point
		Discomfort when walking $\geq 500\text{m}$	2 points
		Discomfort when walking $\geq 100\text{m}$	3 points
		Discomfort when walking $\leq 100\text{m}$	4 points
		Discomfort with activity	5 points
		No rest pain	0 point
		Rest pain after fatigue	1 point
		Sometimes rest pain	2 points
		The rest pain is tolerable	3 points
Rest pain	<input type="checkbox"/>	Rest pain is unbearable, can't sleep	4 points
		No burning sensation	0 point
		Sometimes feel burning	1 point
Burning sensation	<input type="checkbox"/>	Feel burning at night or during the day	2 points



			Persistent burning	3 points
			Persistent burning, and it is unbearable	4 points
Lower temperature	skin	<input type="checkbox"/>	Normal skin temperature	0 point
			Sometimes feel cooling	1 point
			Persistently feel cooling	2 points
			Persistently cold	3 points
			unbearable cold	4 points
abnormal tone	skin	<input type="checkbox"/>	Normal skin tone	0 point
			Sometimes pale or yellow	1 point
			Persistent pallor or yellow	2 points
			Cyanotic skin	3 points
			Atropurpureus or purple brown spot	4 points
Ulcer size		<input type="checkbox"/>	Ulcer healed	0 point
			Ulcer scab is not removed	1 point
			Ulcer diameter <1cm	2 points
			Ulcer diameter 1 ~ 2cm (excluding 2cm)	3 points
			Ulcer diameter 2 ~ 3cm (excluding 3cm)	4 points
			(And so on, for non-graphic wounds, divide the sum of the long and short diameters by 2)	
Ulcer depth		<input type="checkbox"/>	Ulcer healed	0 point
			Ulcer in cortex	1 point
			Ulcer in subcutaneous muscle	2 points
			Ulcer deep in muscle	3 points
			Ulcer between muscle and tendon bone	4 points
toenail		<input type="checkbox"/>	Normal toenails	0 point
			Mild thickening of toenails	1 point
			Toenails are obviously thickened and not deformed	2 points
			Thickened and deformed toenails	3 points
fine hair		<input type="checkbox"/>	Normal hair	0 point
			Sparse hair	1 point
			Visibly sparse fine hair	2 points
			Hair shedding	3 points
Finger test	pressure	<input type="checkbox"/>	Skin tone recovers within 1-2 seconds after acupressure	0 point
			Color recovery after acupressure > 2 seconds	1 point
			Acupressure does not change color	2 points
limb elevation test		<input type="checkbox"/>	No change in foot complexion	0 point
			Pale red or dark skin tone on the feet	1 point
			Pale complexion on the feet	2 points
			Pale complexion with obvious discomfort on the feet	3 points
			Pale complexion with pain	4 points
The recovery time of skin color		<input type="checkbox"/>	The recovery time of skin color < 10 seconds	0 point
			The recovery time of skin color is 10 ~ 40 seconds	1 point
			The recovery time of skin color is 40 ~ 60 seconds	2 points
			The recovery time of skin color is 60 seconds ~ 2 minutes	3 points

		The recovery time of skin color > 2 minutes	4 points
The filling time of the foot dorsal vein	<input type="checkbox"/>	The filling time of the dorsal vein of foot is 5 to 10 seconds	0 point
		The filling time of the dorsal vein of foot is 10 to 60 seconds	1 point
		The filling time of the dorsal vein of foot is 1 to 3 minutes	2 points
		The filling time of the dorsal vein of foot $\geq$ 3 minutes	3 points
Dorsalis pedis artery pulsation	<input type="checkbox"/>	Normal arterial pulse	0 point
		Decreased arterial pulse	1 point
		Very weak arterial pulse	2 points
		Arterial pulse disappeared	3 points
Posterior tibial artery pulse	<input type="checkbox"/>	Normal arterial pulse	0 point
		Decreased arterial pulse	1 point
		Very weak arterial pulse	2 points
		Arterial pulse disappeared	3 points
popliteal pulse	<input type="checkbox"/>	Normal arterial pulse	0 point
		Decreased arterial pulse	1 point
		Very weak arterial pulse	2 points
		Arterial pulse disappeared	3 points
Femoral pulse	<input type="checkbox"/>	Normal arterial pulse	0 point
		Decreased arterial pulse	1 point
		Very weak arterial pulse	2 points
		Arterial pulse disappeared	3 points

---

## Additional File 2. Changes in TCM symptoms scores

Symptom	Score	Scoring criteria	
fatigue and lack of strength	□	Mindless fatigue and lack of strength	0 point
		Easy to be tired but can persist in manual labor	1 point
		Mental fatigue, barely support daily work	2 points
		Weakness of limbs and inability to persist in daily work	3 points
Shortage of Qi and Lackadaisical	□	No Shortage of Qi and lackadaisical	0 point
		Shortage of Qi, not good at talking, don't ask, don't answer	1 point
		Shortage of Qi and fatigue, lazy to talk	2 points
		Shortage of qi with inability to catch one's breath, ask questions without answering 3 points	3 points
Limb tingling and numbness	□	No tingling or numbness in limbs	0 point
		Tingling or numbness when the activity level increases	1 point
		Sometimes tingling or numbness	2 points
		Persistent tingling persistent numbness	3 points 4 points
Limb soreness	□	No soreness of the limbs	0 point
		Limbs swollen when the activity increases	1 point
		Sometimes sore or bloated	2 points
		Persistent sore or bloated Unbearable soreness	3 points 4 points
Dark lips	□	Lips ruddy	0 point
		Dark lips	1 point
		Pale dark lips	2 points
		Green-blue or purple lips	3 points
Dark tongue	□	Pale red tongue and moist	0 point
		Pale, dark or dark red tongue	1 point
		Dark purple tongue/sublingual veins are dark	2 points
		Tongue with petechiae and ecchymosis	3 points
Slimy tongue fur	□	Thin white tongue fur	0 point
		sticky slimy white tongue fur	1 point
		thick slimy tongue fur	2 points
		putrid grimy tongue fur	3 points
Thin and blocked pulse		Normal pulse	0 point
		Thin and String	1 point
		Deep, thin and blocked	2 points
		Deep, blocked and slow	3 points
Symptom	Score	Scoring criteria	
fatigue and lack of strength	□	Mindless fatigue and lack of strength	0 point
		Easy to be tired but can persist in manual labor	1 point
		Mental fatigue, barely support daily work	2 points
		Weakness of limbs and inability to persist in daily work	3 points
Shortage of Qi and Lackadaisical	□	No Shortage of Qi and lackadaisical	0 point
		Shortage of Qi, not good at talking	1 point

		Shortage of Qi and fatigue, lazy to talk	2 points
		Shortage of qi with inability to catch one's breath, ask questions without answering	3 points
Limb tingling and numbness	<input type="checkbox"/>	No tingling or numbness in limbs	0 point
		Tingling or numbness when the activity level increases	1 point
		Sometimes tingling or numbness	2 points
		Persistent tingling	3 points
		persistent numbness	4 points
Limb soreness	<input type="checkbox"/>	No soreness of the limbs	0 point
		Limbs are sore or swollen when the activity increases	1 point
		Sometimes sore or bloated	2 points
		Persistent sore or bloated	3 points
		Unbearable soreness	4 points
Dark lips	<input type="checkbox"/>	Lips ruddy	0 point
		Dark lips	1 point
		Pale dark lips	2 points
		Green-blue or purple lips	3 points
Dark tongue	<input type="checkbox"/>	Pale red tongue and moist	0 point
		Pale, dark or dark red tongue	1 point
		Dark purple tongue/sublingual veins are dark	2 points
		Tongue with petechiae and ecchymosis	3 points
Slimy tongue fur	<input type="checkbox"/>	Thin white tongue fur	0 point
		sticky slimy white tongue fur	1 point
		thick slimy tongue fur	2 points
		putrid grimy tongue fur	3 points
Thin and blocked pulse		Normal pulse	0 point
		Thin and String	1 point
		Deep, thin and blocked	2 points
		Deep, blocked and slow	3 points

---