

1 Triglyceride-glucose index and the risk of heart failure: evidence from two large 2 cohorts and a Mendelian randomization analysis

3 Short Title: Triglyceride-glucose index and the risk of heart failure

4 Xintao Li, MD ^{1,2†}, Jeffrey Shi Kai Chan, MBChB ^{2†}, Bo Guan, MD ³, Shi Peng, MD,
5 PhD ¹, Xiaoyu Wu, MD ¹, Jiandong Zhou, PhD ^{2,5}, Jeremy Man Ho Hui ², Yan Hui
6 Athena Lee ², Danish Iltaf Satti ², Shek Long Tsang MBBS ², Shouling Wu, MD, PhD
7 ⁴, Songwen Chen, MD, PhD ^{1*}, Gary Tse, MD, PhD ^{2,6,7*}, Shaowen Liu, MD, PhD ^{1*}.

8
9 ¹ Department of Cardiology, Shanghai General Hospital, School of Medicine, Shanghai
10 Jiao Tong University, Shanghai, China

11 ² Cardiovascular Analytics Group, Hong Kong – United Kingdom – China
12 collaboration

13 ³ Geriatric Cardiology Department of the Second Medical Center and National Clinical
14 Research Center for Geriatric Diseases, Chinese PLA General Hospital, Beijing, China

15 ⁴ Department of Cardiology, Kailuan General Hospital, Tangshan 063000, China.

16 ⁵ Nuffield Department of Medicine, University of Oxford, Oxford, United Kingdom.

17 ⁶ Kent and Medway Medical School, Canterbury, Kent, CT2 7NT, United Kingdom.

18 ⁷ Tianjin Key Laboratory of Ionic-Molecular Function of Cardiovascular Disease,
19 Department of Cardiology, Tianjin Institute of Cardiology, Second Hospital of Tianjin
20 Medical University, Tianjin 300211, China.

21

22

NOTE: This preprint reports new research that has not been certified by peer review and should not be used to guide clinical practice.

23 †These authors have contributed equally to this work and share first authorship

24

25 Corresponding author:

26 Professor Shaowen Liu, MD, PhD, Department of Cardiology, Shanghai General

27 Hospital, School of Medicine, Shanghai Jiao Tong University, 200080 Shanghai, China

28 Email: shaowen.liu@hotmail.com

29

30 Co-corresponding author:

31 Professor Gary Tse, MD, PhD, Kent and Medway Medical School, Canterbury, Kent,

32 CT2 7NT, United Kingdom. Email: garytse86@gmail.com

33 Dr. Songwen Chen, MD, PhD, Department of Cardiology, Shanghai General Hospital,

34 School of Medicine, Shanghai Jiao Tong University, 200080 Shanghai, China

35 Email: chensongwen@hotmail.com

36

37 Total word count of the manuscript:

38

Abstract

Background: The relationship between triglyceride-glucose (TyG) index, an emerging marker of insulin resistance, and the risk of incident heart failure (HF) was unclear. This study thus aimed to investigate this relationship.

Methods: Subjects without prevalent cardiovascular diseases from the prospective Kailuan cohort (recruited during 2006-2007) and a retrospective cohort of family medicine patients from Hong Kong (recruited during 2000-2003) were followed up until December 31st, 2019 for the outcome of incident HF. Separate adjusted hazard ratios (aHRs) summarizing the relationship between TyG index and HF risk in the two cohorts were combined using a random-effect meta-analysis. Additionally, a two-sample Mendelian randomization (MR) of published genome-wide association study data was performed to assess the causality of observed associations.

Results: In total, 95,996 and 19,345 subjects from the Kailuan and Hong Kong cohorts were analyzed, respectively, with 2,726 cases (2.8%) of incident HF in the former and 1,709 (7.0%) in the latter. Subjects in the highest quartile of TyG index had the highest risk of incident HF in both cohorts (Kailuan: aHR 1.23 (95% confidence interval: 1.09-1.39), $P_{Trend} < 0.001$; Hong Kong: aHR 1.21 (1.04-1.40), $P_{Trend} = 0.007$; both compared with the lowest quartile). Meta-analysis showed similar results (highest versus lowest quartile: HR 1.22(1.11-1.34), $P < 0.0001$). Findings from MR analysis, which included 47,309 cases and 930,014 controls, supported a causal relationship between higher TyG

61 index and increased risk of HF (odds ratio 1.27(1.15-1.40), $P<0.001$).

62

63 **Conclusion:** A higher TyG index is an independent and causal risk factor for incident
64 HF in the general population.

65

66 **Keywords:** Heart failure; Triglyceride-glucose index; Risk stratification; Mendelian
67 Randomization; Insulin resistance.

68

Clinical Perspective:

What is new?

- In 115,341 subjects from two large cohorts in China, an elevated triglyceride-glucose (TyG) index was independently associated with an increased risk of incident heart failure (HF).
- Two-sample Mendelian randomization analysis based on published genome-wide association studies found significant association between genetically determined TyG index and the risk of HF.
- Together, these findings suggest that a higher TyG index is an independent and causal risk factor of incident HF in the general population.

What are the clinical implications?

- The TyG index may facilitate recognition of individuals at elevated risk of incident HF and allow early preventive interventions.
- The demonstrated causal effect of TyG index on incident HF warrants further research to fully understand the underlying mechanisms.

Introduction

Heart failure (HF) is associated with significant morbidity and mortality, with contemporary five-year survival rates of less than 50%¹. The prevalence of HF has been estimated to be 1-2% in developed countries and is projected to double by 2060^{2, 3}. Given the enormous public health and socioeconomic burden caused by HF, it is critically important to identify individuals at high risk of HF and to implement preventive interventions as early as possible⁴.

Recently, the role of metabolic disorders in the development of HF has been increasingly investigated⁵. Insulin resistance, a hallmark of type II diabetes mellitus and metabolic syndrome, has been observed to be associated with adverse cardiac remodeling and dysfunction⁶. Molecular studies have provided ample evidence for the etiological role of insulin resistance in the development of HF^{7, 8}. However, the gold standard method for measuring insulin sensitivity, the hyperinsulinaemic-euglycaemic clamp test, is time-consuming and invasive⁹, which has impeded its widespread use in clinical practice.

The triglyceride-glucose (TyG) index, a simple, dimensionless marker derived from fasting blood triglyceride and glucose levels as measured in routine biochemical tests, has been proposed and validated as a surrogate marker of insulin resistance¹⁰. Previous studies have found a positive association between TyG index and the risk of various metabolic and atherosclerotic cardiovascular diseases^{11, 12}. However, few studies have

been conducted to investigate the association between TyG index and the risk of incident HF, and whether the association is causal remains undetermined.

Mendelian randomization (MR) makes use of genetic variants as instrumental variables (IVs) to generate causal estimates of the long-term effects of risk factors on outcomes¹³. MR analysis can overcome the limitations of residual confounding and reverse causation in conventional observational studies^{13, 14}. With the development of genome-wide association studies (GWAS), MR is highly suited and has been used for investigating the causal association between TyG index and HF^{15, 16}.

As such, the present study aimed to assess the association between the TyG index and the risk of incident HF, as well as using a two-sample MR study to determine whether such associations were causal in nature.

Methods

Study design and population

Study subjects were identified from two Chinese studies, the Kailuan cohort in northern China and a territory-wide cohort in Hong Kong. The protocol for this study was in accordance with the guidelines of the Helsinki Declaration and this study was approved by the Ethics Committee at the Kailuan General Hospital and the Institutional Review Board of the University of Hong Kong / Hospital Authority Hong Kong West Cluster.

The Kailuan Study is a prospective cohort that based on a community in the Tangshan City. Details of the study has been published elsewhere¹⁷. In brief, a total of 101,510 subjects (aged 18 – 98 years; 81,110 males) were enrolled in the Kailuan Study at baseline (2006-2007), and received an interview of standardized questionnaires and clinical examinations at 11 hospitals responsible for health care of the community. The subjects were then followed up with repeat questionnaires, clinical and laboratory examinations every two years. All subjects gave informed consent to their enrolment in this study. Subjects with prevalent cancer and cardiovascular diseases, including HF, atrial fibrillation (AF), myocardial infarction (MI), and ischemic stroke were excluded, as well as those with missing baseline levels of triglyceride (TG) or fasting blood glucose (FBG).

Data for the Hong Kong cohort were extracted retrospectively from the Clinical Data Analysis and Reporting System (CDARS), an administrative electronic medical records database that records the basic demographics, diagnoses, selected procedures, medication prescriptions, and selected laboratory measurements of all patients that attended public healthcare institutions in Hong Kong which serve an estimated 90% of the population¹⁸. Diagnoses in CDARS were recorded using International Classification of Diseases, Ninth revision (ICD-9) codes regardless of the time of data entry, as ICD-10 has not been implemented in CDARS to date. The ICD-9 codes used for identifying comorbid conditions and the outcome (HF) were summarized in **Table S1**. CDARS has been extensively used in prior studies and has been shown to have good diagnostic

coding accuracy^{19, 20}. As only retrospective, deidentified data were used, the requirement for individual patient consent has been waived. For this study, adult patients (18 years old or above) attending a family medicine clinic in Hong Kong during the years 2000-2003 with at least one set of paired FBG and fasting TG levels at baseline were included. Patients with a history of ischemic heart disease, stroke, HF, AF, or cancer were excluded, as well as those who were pregnant at the time of inclusion, and those with missing baseline low-density lipoprotein cholesterol (LDL-C), high-density lipoprotein cholesterol (HDL-C), and total cholesterol levels.

Data collection and definitions

The data collected and definitions used in this study were detailed in **Supplementary Methods**^{17, 21, 22}. The TyG index was calculated as $\ln [\text{fasting TG (mg/dl)} \times \text{FBG (mg/dl)} / 2]$ ²³.

Outcomes and follow-up

In the Kailuan cohort, all subjects were followed from the baseline examination until the date of onset of HF, date of death, or end of follow-up (December 31st, 2019), whichever came first. HF was diagnosed by experienced cardiologists in accordance with the guidelines of the European Society of Cardiology²⁴. Incident HF cases were derived from the Municipal Social Insurance Institutions, hospital discharge register, and death certificates.

In the Hong Kong cohort, all patients were followed up from inclusion until the first recorded diagnosis of HF, death, or the end of follow-up (December 31st, 2019), whichever came first. HF was identified using ICD-9 codes as summarized in **Table S1**.

Two-sample MR analysis

Mendelian randomization is built upon three main assumptions²⁵. First, single-nucleotide polymorphisms (SNPs) selected as instrumental variables should be robustly associated with the risk factor. Second, no association should exist between genetic variants and confounders. Third, genetic variants should affect outcome only through the risk factor.

TyG index-associated variants that reached genome-wide significance ($P < 5 \times 10^{-8}$) were retrieved from a previous GWAS¹⁶. In brief, the identified GWAS included 273,368 subjects from the United Kingdom Biobank, who were aged 40-69 and free from diabetes mellitus and lipid metabolism disorders¹⁶. These SNPs were further pruned by linkage disequilibrium with $R^2 < 0.01$ and those that were significantly associated with TG or glucose were also excluded. In total, 192 IVs were selected for TyG index initially. Summary statistics data for the associations of TyG index-associated SNPs with HF were extracted from the published GWAS performed by the Heart Failure Molecular Epidemiology for Therapeutic Targets (HERMES) Consortium on 47,309 cases and 930,014 controls of European ancestry²⁶. HF cases from 26 cohorts of the HERMES Consortium were identified based on the clinical diagnosis of HF of

any etiology with no specific criteria for left ventricular ejection fraction. Details of subject selection were published elsewhere²⁶.

Statistical analysis

Continuous variables were presented as mean \pm standard deviation (SD) or median with interquartile range (IQR) depending on their distribution. Categorical variables were presented as frequencies and percentages.

Kaplan-Meier curves were used to visualize the cumulative incidence of HF across quartiles of the TyG index. The association between baseline TyG index and the risk of incident HF was analyzed using the Cox proportional hazards model, with hazard ratios (HR) with 95% confidence intervals (CI) as the summary statistics. The Cox regression was performed with a staged approach, as detailed in **Supplementary Methods**. The association between the risks of HF and the observed spectrum of TyG index was also modelled and visualized using fractional polynomial curves with full multivariable adjustments. Furthermore, competing risk regression using the Fine and Gray sub-distribution model was performed to address the potentially confounding issue of competing risk, with death from any cause as the competing event. Sub-hazard ratios (SHR) with 95% CI were used as the summary statistics. Sensitivity analyses were conducted by excluding subjects with less than two-year follow-up time, and, separately, those with medications at baseline.

A priori subgroup analyses were performed for age (<65 vs ≥65), gender (male vs female), diabetes (yes vs no), hypertension (yes vs no), dyslipidemia (yes vs no) for both cohorts, and, for the Kailuan cohort, for obesity (yes vs no), and hs-CRP level (<1 mg/dl vs ≥1 mg/dl).

To combine the results from the two cohorts, we extracted hazard ratios from the fully adjusted model and performed a meta-analysis using the inverse variance method with random effects to estimate the association between TyG index, both as categorical and continuous variables, and the risk of incident HF.

In the MR analysis, the summary exposure and outcome data were first harmonized, and SNPs significantly associated with incident HF were excluded. Causal effects of TyG index on HF were estimated by the inverse-variance weighted (IVW) method. Weighted median, MR-Egger, and pleiotropy residual sum and outlier (MR-PRESSO) methods were used for supplementary analyses. Directional pleiotropy was assessed by MR-Egger intercepts and heterogeneity among genetic variants was evaluated by Cochran's *Q* test.

To test the validity of causal effects estimates, multivariable MR (MVMR) using the IVW method was conducted to further investigate the direct causal effect of TyG index on HF after adjusting for confounders including BMI²⁷, SBP²⁸, DBP²⁸, LDL-c²⁹, and HDL-c²⁹. An additional sensitivity analysis was performed by excluding any SNP

significantly associated with those confounders.

All statistical analyses for the Kailuan and Hong Kong cohorts were conducted using SAS version 9.4 (SAS Institute, Inc., Cary, NC), Stata 16.1 software (StataCorp, College Station, TX), and/or RevMan (Version 5.1; Cochrane Collaboration, Oxford, UK). The MR analyses were performed by the TwoSampleMR, MR-PRESSO and MVMR packages with R version 4.0.2. All p values were two-sided, with $p < 0.05$ considered statistically significant.

Results

Of the 101,510 subjects who took part in the Kailuan study, 95,996 subjects were analyzed after applying the exclusion criteria (**Figure S1**). For the Hong Kong cohort, 24,338 patients were identified for inclusion, and 19,345 patients were analyzed after applying the exclusion criteria (**Figure S2**). **Table 1** and **Table 2** shows the baseline characteristics of subjects according to the baseline TyG index quartiles of two cohorts.

In the Kailuan cohort, there were 2,726 cases (2.8%) of incident HF over a mean follow-up of 12.3 ± 2.2 years, with an overall incidence rate of 2.3 (95% CI 2.2-2.4) cases per 1000 person years. In the Hong Kong cohort, there were 1,709 cases (7.0%) of incident HF over a mean follow-up of 16.2 ± 4.3 years, with an overall incidence rate of 5.5 (95% CI 5.3-5.8) cases per 1000 person years. Over the study duration, 10,825 subjects (11.3%) in the Kailuan cohort died (9,985 (10.1%) without developing HF), while 6,372

patients (32.9%) in the Hong Kong cohort died (4,996 (25.8%) without developing HF).

Associations between the TyG index and the risk of incident HF

Table 3 and **Table 4** show the associations between the TyG index, assessed both as a categorical and continuous variable, with the respective risks of incident HF in the Kailuan and Hong Kong cohorts. The cumulative incidence of incident HF for the Kailuan and the Hong Kong cohort is shown in **Figures 1A** and **1B**, respectively. After fully adjusting for potential confounders, patients in the highest quartile of the TyG index had significantly higher risks of incident HF than those in the lowest quartile in both the Kailuan (HR 1.23 (95% CI 1.09-1.39), $P < 0.001$) and Hong Kong (HR 1.21 (95% CI 1.04-1.40), $P = 0.007$) cohorts. Similarly, every unit increment in the TyG index was associated with a 17% and a 13% increase in the risk of HF in the Kailuan (HR 1.17 (95% CI 1.10-1.24), $P < 0.001$) and Hong Kong (HR 1.13 (95% CI 1.05-1.22), $P < 0.001$) cohorts, respectively. Fractional polynomial curves with full multivariable adjustment (**Figure S3**) showed a possible threshold effect in the prognostic value of the TyG index, with a lower TyG index showing no significant association with the risk of incident HF, and a higher TyG index showing a grossly linear relationship with the said risk. This was consistent with the multivariable Cox regression analysis as shown in **Tables 3 and 4** with TyG index analyzed as quartiles. Competing risk regression using the Fine and Gray sub-distribution model with death from any cause as the competing event also showed positive associations between a higher TyG index and a high risk of incident HF (**Tables 3 and 4**). Sensitivity analyses produced consistent and

similar results (**Tables 3 and 4**).

Results of subgroup analyses are shown in **Figure 2A** and **Figure 2B** for the Kailuan and Hong Kong cohorts, respectively. Generally, the TyG index, analyzed as a continuous variable, was positively associated with the risk of HF across various subgroups. There was significant interaction between gender and the TyG index in the Kailuan cohort (P for interaction = 0.02), but not in the Hong Kong cohort (P for interaction = 0.11). The association between TyG index and the risk of incident HF was more prominent in female subjects than in male subjects in both cohorts [HR 1.21 (95% CI 1.02 -1.47) for female vs. 1.15 (95% CI 1.08 - 1.23) for male in the Kailuan cohort, and 1.22 (95% CI 1.10 -1.64) vs. 1.05 (95% CI 0.94 - 1.17) in the Hong Kong cohort].

A random-effect meta-analysis combining the results from the two cohorts showed that the risk of incident HF of subjects in the highest quartile of the TyG index was 22% higher (95% CI 11% - 34%, $P<0.0001$; **Figure 3A**) than those in the lowest quartile, with every unit increment of the TyG index being associated with a 15% increase in the risk of incident HF (95% CI 10% - 21%, $P<0.00001$; **Figure 3B**). Similarly, subjects in the highest quartile of the TyG index had a 25% (95% CI 13% - 37%) increase in the sub-hazard of incident HF.

Two-Sample MR analysis

The associations between genetically determined TyG index and the risk of incident HF as estimated by two-sample MR are presented in **Figure 4**. Analysis using the IVW method demonstrated that genetic predisposition to increased TyG index was significantly associated with an increased risk of incident HF (OR 1.27, 95% CI 1.15 - 1.40, $P < 0.001$). The Cochran's Q statistic indicated significant heterogeneity across SNPs, while no indication of directional pleiotropy was found by MR-Egger intercept (**Table S3**). The association remained consistent when using complementary methods for analysis, including weighted median, MR-Egger and MRPRESSO (**Figure 4**).

To verify the causal effect of TyG index on HF, we performed multivariable MR analysis by adjusting for HF risk factors, including BMI, blood pressure, and lipids. The association remained stable after adjusting for single risk factors (**Table S4**) and in a fully adjusted model (OR 1.20, 95% CI 1.02-1.41, $P = 0.03$; **Figure 4**). Furthermore, results of the sensitivity analysis, in which 32 SNPs with potential pleiotropy were excluded, confirmed the positive association between genetically determined TyG index and HF risk (OR 1.19, 95% CI 1.05 - 1.35, $P = 0.01$).

Discussion

Utilizing observational data from two large Chinese cohorts and a two-sample MR analysis based on a public GWAS dataset, this study demonstrated that a high TyG index was an independent and causal risk factor for incident HF in the general population.

326

327 Previous studies have found independent associations between TyG index and risks of
 328 atherosclerotic cardiovascular diseases, including myocardial infarction and ischemic
 329 stroke^{23, 30}. In a recent analysis of data from the Atherosclerosis Risk in Communities
 330 (ARIC) study, Huang *et al.* also reported an association between higher TyG index and
 331 higher risk of incident HF in an American population, with every standard deviation's
 332 increase in TyG index (corresponding to a TyG index of 0.6) associated with a 15%
 333 increase in risk³¹. Our study confirmed these findings in two larger cohorts from distinct
 334 geographical regions in China. Unlike the ARIC study which was restricted to subjects
 335 between the ages of 45-64 years old, our study included adult patients across the full
 336 age range. As such, our study more closely reflects real-life practice, and our findings
 337 are thus more directly generalizable.

338

339 Importantly, utilizing MR of GWAS data, we demonstrated that the association between
 340 TyG and HF was causal by nature. Although the exact underlying mechanism for the
 341 association between TyG index and HF remains to be confirmed by further molecular
 342 studies, the well-established relationship between TyG index and insulin resistance
 343 suggests that insulin resistance may at least be an important driver of such association¹⁰.
 344 This was further reinforced by the results from the Kailuan cohort showing that the
 345 association between TyG index and HF was independent of chronic inflammation, as
 346 well as previous studies observing associations between insulin resistance and higher
 347 risks of incident HF independent of myocardial ischaemia³²⁻³⁴. Insulin resistance may

lead to excessive circulating free fatty acids and triglycerides, which induces cardiac lipotoxicity by generating toxic lipid intermediates, and decreases cardiac efficiency by increasing fatty acid oxidation^{35, 36}. Insulin resistance is also associated with disturbances of the systemic metabolic and inflammatory milieu, including increased concentrations of proinflammatory cytokines, adipokines, and catecholamines, which may trigger low-grade inflammation and chronic hypercatecholaminemia that result in detrimental effects on cardiac function³⁷. Furthermore, insulin resistance is involved in the maladaptive activation of the renin-angiotensin-aldosterone system, with chronic hyperinsulinaemia inducing increased release of angiotensinogen from adipose tissue and upregulation of angiotensin II receptor expression, eventually resulting in adverse cardiac remodeling and dysfunction³⁸. Nonetheless, the mechanisms between insulin resistance and HF are incompletely understood to date, and remain an important area of further research.

Another major finding of the present study is that the association between TyG index and the risk of HF was stronger in females than in males. Between-gender differences are common in cardiovascular medicine. Previous studies have shown that women with disorders of glucose metabolism have a greater risk of coronary heart disease than men^{30, 39}. HF caused by obesity, diabetes, or metabolic syndrome was also found to be more common in women⁴⁰. These suggest that between-gender differences in molecular mechanisms, particularly those in hormonal axes, may not only influence glucose and lipid metabolism, but also energy metabolism in the heart and, thereby, cardiac function.

Females are known to be less likely than males to develop insulin resistance⁴¹ but are at higher risk of diabetic cardiomyopathy⁴², implying that females may be more susceptible to cardiac damage induced by insulin resistance. Gender differences in nitric oxide synthase (NOS) activity and signaling, which are critical in metabolic regulation and in modulating responses to insulin resistance, are thought to be central to these observations⁴³. The higher baseline levels of NOS in females predisposes to higher levels of uncoupled NOS on exposure to oxidative stress, which exacerbates the effects of insulin resistance, such as myocardial fibrosis and hypertrophy⁴³. Additionally, considering that the mean age of subjects in this study implied that the female subjects were mostly postmenopausal, the postmenopausal decline in the protective effects of estrogen may contribute to gender differences in the susceptibility to insulin resistance-induced cardiac damage⁴⁰. Notwithstanding the existing evidence as discussed above, further studies exploring the gender differences in susceptibility to insulin resistance-induced cardiac damage should provide important insights and better understanding of diabetic cardiomyopathy.

Having derived consistent findings from two geographically distinct regions in China, our results suggest that the TyG index, as a surrogate marker of insulin resistance, may be widely applicable and prognostically useful regardless of geographical region and ethnicity. As subjects with prevalent major cardiovascular diseases were excluded from the present study, the analyzed cohorts had relatively low cardiovascular risks. Our results supported the TyG index as a potentially viable and effective tool for

cardiovascular risk stratification in the general population. Of note, insulin resistance in many previous studies was measured by the Homeostatic Model Assessment for Insulin Resistance (HOMA-IR) which requires measurements of fasting insulin and glucose^{32, 33}. However, measuring insulin levels is expensive, and the HOMA-IR has been mostly confined to research uses with low clinical utilization. In contrast, the TyG index is simple to measure, has been validated against the euglycemic-hyperinsulinemic clamp test which is considered the gold standard for measuring insulin resistance¹⁰, and may outperform the HOMA-IR in identifying insulin resistance⁴⁴. It has also been shown to be excellent at detecting insulin resistance in non-diabetic patients⁴⁵, which is important as insulin resistance and its associated cardiovascular damage precedes overt type II diabetes mellitus⁴⁶. The TyG index may therefore facilitate recognition of patients at elevated risk of incident HF, for which efficacious measures for primary prevention exist⁴.

Strengths and limitations

The strengths of our study included the large sample size, long follow-up time, and having demonstrated reproducible results across two independent observational cohorts and MR analysis. Our findings were further strengthened by multiple subgroup and sensitivity analyses yielding largely consistent results. To the best of the authors' knowledge, this was one of the first studies demonstrating causality between higher TyG index and higher risk of incident HF. Nonetheless, some limitations must be noted. First, we were unable to compare the predictive power of different methods for

assessing insulin resistance in our observational study, since fasting insulin levels were unavailable for most subjects. Second, inherent to all observational studies, there may be residual or unmeasured confounders that we were not able to address. Nonetheless, we have included multiple important risk factors for incident HF in the multivariable regression models, and the numerous sensitivity analyses yielded consistent results which reinforced the validity of our findings. Third, the MR analysis was restricted to patients of European descent to reduce bias from population stratification, which may limit extrapolation of our MR results to other populations. Nevertheless, given that associations between TyG index and the risk of incident HF observed in a recent report in an American cohort (the ARIC study) were comparable to our findings as observed in Chinese cohorts, the causality established by our MR analysis is likely true in Chinese patients as well. Fourth, no information was available about the subtype of incident HF. Given the different metabolic mechanisms contributing to the pathogenesis of different types of HF⁴⁷, further research in this regard is warranted. Fifth, diagnoses of the Hong Kong cohort were identified using ICD-9 codes and could not be individually adjudicated due to the retrospective, deidentified nature of the database, as well as the large sample size. Regardless, all diagnostic codes were entered by treating clinicians, who were completely independent of the authors. CDARS has also been shown to have good coding accuracy, specifically for cardiovascular outcomes²⁰.

Conclusion

As observed from two large, geographically distinct Chinese cohorts, a higher TyG

index was independently associated with higher risk of incident HF. MR analysis demonstrated that the association was likely causal in nature. Further studies are warranted to confirm our findings and fully elucidate the underlying biological mechanisms.

Acknowledgements

The authors appreciate all the subjects involved in this study, their families, and the members of the survey team from the Kailuan community.

Author contributions

Xintao Li and Jeffrey Shi Kai Chan designed this study, conducted the main analysis, visualized the results, and wrote the first draft of the manuscript. Bo Guan, Shi Peng, Xiaoyu Wu, Yan Hiu Athena Lee, Jeremy Man Ho Hui, Danish Iltaf Satti, Shek Long Tsang, Shouling Wu, Jiandong Zhou, Songwen Chen, Gary Tse, and Shaowen Liu reviewed and edited the article. All authors contributed to the article significantly and approved the submitted version.

Funding Sources

This work was supported by the National Natural Science Foundation of China (Grant No. 81970273).

Disclosures:

458 None.

References

1. Ziaeian B and Fonarow GC. Epidemiology and aetiology of heart failure. *Nat Rev Cardiol.* 2016;13:368-78.
2. McDonagh TA, Metra M, Adamo M, Gardner RS, Baumbach A, Böhm M, Burri H, Butler J, Čelutkienė J, Chioncel O, Cleland JGF, Coats AJS, Crespo-Leiro MG, Farmakis D, Gilard M, Heymans S, Hoes AW, Jaarsma T, Jankowska EA, Lainscak M, Lam CSP, Lyon AR, McMurray JJV, Mebazaa A, Mindham R, Muneretto C, Francesco Piepoli M, Price S, Rosano GMC, Ruschitzka F and Kathrine Skibelund A. 2021 ESC Guidelines for the diagnosis and treatment of acute and chronic heart failure. *Eur Heart J.* 2021;42:3599-3726.
3. de Boer RA, Naylor M, deFilippi CR, Enserro D, Bhambhani V, Kizer JR, Blaha MJ, Brouwers FP, Cushman M, Lima JAC, Bahrami H, van der Harst P, Wang TJ, Gansevoort RT, Fox CS, Gaggin HK, Kop WJ, Liu K, Vasan RS, Psaty BM, Lee DS, Hillege HL, Bartz TM, Benjamin EJ, Chan C, Allison M, Gardin JM, Januzzi JL, Jr., Shah SJ, Levy D, Herrington DM, Larson MG, van Gilst WH, Gottdiener JS, Bertoni AG and Ho JE. Association of Cardiovascular Biomarkers With Incident Heart Failure With Preserved and Reduced Ejection Fraction. *JAMA Cardiol.* 2018;3:215-224.
4. Greene SJ and Butler J. Primary Prevention of Heart Failure in Patients With Type 2 Diabetes Mellitus. *Circulation.* 2019;139:152-154.
5. Ho KL, Karwi QG, Connolly D, Pherwani S, Ketema EB, Ussher JR and Lopaschuk GD. Metabolic, structural and biochemical changes in diabetes and the

development of heart failure. *Diabetologia*. 2022;65:411-423.

6. Kishi S, Gidding SS, Reis JP, Colangelo LA, Venkatesh BA, Armstrong AC, Isogawa A, Lewis CE, Wu C, Jacobs DR, Jr., Liu K and Lima JA. Association of Insulin Resistance and Glycemic Metabolic Abnormalities With LV Structure and Function in Middle Age: The CARDIA Study. *JACC Cardiovasc Imaging*. 2017;10:105-114.

7. Riehle C and Abel ED. Insulin Signaling and Heart Failure. *Circ Res*. 2016;118:1151-69.

8. Velez M, Kohli S and Sabbah HN. Animal models of insulin resistance and heart failure. *Heart Fail Rev*. 2014;19:1-13.

9. Antuna-Puente B, Disse E, Rabasa-Lhoret R, Laville M, Capeau J and Bastard JP. How can we measure insulin sensitivity/resistance? *Diabetes Metab*. 2011;37:179-88.

10. Guerrero-Romero F, Simental-Mendía LE, González-Ortiz M, Martínez-Abundis E, Ramos-Zavala MG, Hernández-González SO, Jacques-Camarena O and Rodríguez-Morán M. The product of triglycerides and glucose, a simple measure of insulin sensitivity. Comparison with the euglycemic-hyperinsulinemic clamp. *J Clin Endocrinol Metab*. 2010;95:3347-51.

11. Ding X, Wang X, Wu J, Zhang M and Cui M. Triglyceride-glucose index and the incidence of atherosclerotic cardiovascular diseases: a meta-analysis of cohort studies. *Cardiovasc Diabetol*. 2021;20:76.

12. Zou S, Yang C, Shen R, Wei X, Gong J, Pan Y, Lv Y and Xu Y. Association Between the Triglyceride-Glucose Index and the Incidence of Diabetes in People

With Different Phenotypes of Obesity: A Retrospective Study. *Front Endocrinol (Lausanne)*. 2021;12:784616.

13. Smith GD and Ebrahim S. 'Mendelian randomization': can genetic epidemiology contribute to understanding environmental determinants of disease? *Int J Epidemiol*. 2003;32:1-22.

14. Larsson SC, Burgess S and Michaëlsson K. Association of Genetic Variants Related to Serum Calcium Levels With Coronary Artery Disease and Myocardial Infarction. *Jama*. 2017;318:371-380.

15. Li X, Peng S, Guan B, Chen S, Zhou G, Wei Y, Gong C, Xu J, Lu X, Zhang X and Liu S. Genetically Determined Inflammatory Biomarkers and the Risk of Heart Failure: A Mendelian Randomization Study. *Front Cardiovasc Med*. 2021;8:734400.

16. Si S, Li J, Li Y, Li W, Chen X, Yuan T, Liu C, Li H, Hou L, Wang B and Xue F. Causal Effect of the Triglyceride-Glucose Index and the Joint Exposure of Higher Glucose and Triglyceride With Extensive Cardio-Cerebrovascular Metabolic Outcomes in the UK Biobank: A Mendelian Randomization Study. *Front Cardiovasc Med*. 2020;7:583473.

17. Wu S, Huang Z, Yang X, Zhou Y, Wang A, Chen L, Zhao H, Ruan C, Wu Y, Xin A, Li K, Jin C and Cai J. Prevalence of ideal cardiovascular health and its relationship with the 4-year cardiovascular events in a northern Chinese industrial city. *Circ Cardiovasc Qual Outcomes*. 2012;5:487-93.

18. Kong X, Yang Y, Gao J, Guan J, Liu Y, Wang R, Xing B, Li Y and Ma W. Overview of the health care system in Hong Kong and its referential significance to mainland

525 China. *J Chin Med Assoc.* 2015;78:569-73.

526 19. Chan JSK, Satti DI, Lee YHA, Hui JMH, Lee TTL, Chou OHI, Wai AKC, Ciobanu
527 A, Liu Y, Liu T, Roever L, Biondi-Zoccai G, Zhang Q, Cheung BM, Zhou J and Tse
528 G. High visit-to-visit cholesterol variability predicts heart failure and adverse
529 cardiovascular events: a population-based cohort study. *Eur J Prev Cardiol.* 2022.

530 20. Wong AY, Root A, Douglas IJ, Chui CS, Chan EW, Ghebremichael-
531 Weldeselassie Y, Siu CW, Smeeth L and Wong IC. Cardiovascular outcomes
532 associated with use of clarithromycin: population based study. *Bmj.*
533 2016;352:h6926.

534 21. Inker LA, Astor BC, Fox CH, Isakova T, Lash JP, Peralta CA, Kurella Tamura M
535 and Feldman HI. KDOQI US commentary on the 2012 KDIGO clinical practice
536 guideline for the evaluation and management of CKD. *Am J Kidney Dis.*
537 2014;63:713-35.

538 22. Inker LA, Eneanya ND, Coresh J, Tighiouart H, Wang D, Sang Y, Crews DC,
539 Doria A, Estrella MM, Froissart M, Grams ME, Greene T, Grubb A, Gudnason V,
540 Gutiérrez OM, Kalil R, Karger AB, Mauer M, Navis G, Nelson RG, Poggio ED, Rodby
541 R, Rossing P, Rule AD, Selvin E, Seegmiller JC, Shlipak MG, Torres VE, Yang W,
542 Ballew SH, Couture SJ, Powe NR and Levey AS. New Creatinine- and Cystatin C-
543 Based Equations to Estimate GFR without Race. *N Engl J Med.* 2021;385:1737-
544 1749.

545 23. Wang A, Wang G, Liu Q, Zuo Y, Chen S, Tao B, Tian X, Wang P, Meng X, Wu
546 S, Wang Y and Wang Y. Triglyceride-glucose index and the risk of stroke and its

547 subtypes in the general population: an 11-year follow-up. *Cardiovasc Diabetol.*
548 2021;20:46.

549 24. Swedberg K, Cleland J, Dargie H, Drexler H, Follath F, Komajda M, Tavazzi L,
550 Smiseth OA, Gavazzi A, Haverich A, Hoes A, Jaarsma T, Korewicki J, Lévy S, Linde
551 C, Lopez-Sendon JL, Nieminen MS, Piérard L and Remme WJ. Guidelines for the
552 diagnosis and treatment of chronic heart failure: executive summary (update
553 2005): The Task Force for the Diagnosis and Treatment of Chronic Heart Failure
554 of the European Society of Cardiology. *Eur Heart J.* 2005;26:1115-40.

555 25. Burgess S, Scott RA, Timpson NJ, Davey Smith G and Thompson SG. Using
556 published data in Mendelian randomization: a blueprint for efficient identification
557 of causal risk factors. *Eur J Epidemiol.* 2015;30:543-52.

558 26. Shah S, Henry A, Roselli C, Lin H, Sveinbjörnsson G, Fatemifar G, Hedman Å K,
559 Wilk JB, Morley MP, Chaffin MD, Helgadóttir A, Verweij N, Dehghan A, Almgren P,
560 Andersson C, Aragam KG, Ärnlöv J, Backman JD, Biggs ML, Bloom HL, Brandimarto
561 J, Brown MR, Buckbinder L, Carey DJ, Chasman DI, Chen X, Chen X, Chung J,
562 Chutkow W, Cook JP, Delgado GE, Denaxas S, Doney AS, Dörr M, Dudley SC, Dunn
563 ME, Engström G, Esko T, Felix SB, Finan C, Ford I, Ghanbari M, Ghasemi S, Giedraitis
564 V, Giulianini F, Gottdiener JS, Gross S, Guðbjartsson DF, Gutmann R, Haggerty CM,
565 van der Harst P, Hyde CL, Ingelsson E, Jukema JW, Kavousi M, Khaw KT, Kleber
566 ME, Køber L, Koekemoer A, Langenberg C, Lind L, Lindgren CM, London B, Lotta
567 LA, Lovering RC, Luan J, Magnusson P, Mahajan A, Margulies KB, März W,
568 Melander O, Mordi IR, Morgan T, Morris AD, Morris AP, Morrison AC, Nagle MW,

569 Nelson CP, Niessner A, Niiranen T, O'Donoghue ML, Owens AT, Palmer CNA, Parry
570 HM, Perola M, Portilla-Fernandez E, Psaty BM, Rice KM, Ridker PM, Romaine SPR,
571 Rotter JI, Salo P, Salomaa V, van Setten J, Shalaby AA, Smelser DT, Smith NL,
572 Stender S, Stott DJ, Svensson P, Tammesoo ML, Taylor KD, Teder-Laving M,
573 Teumer A, Thorgeirsson G, Thorsteinsdottir U, Torp-Pedersen C, Trompet S, Tyl B,
574 Uitterlinden AG, Veluchamy A, Völker U, Voors AA, Wang X, Wareham NJ,
575 Waterworth D, Weeke PE, Weiss R, Wiggins KL, Xing H, Yerges-Armstrong LM, Yu
576 B, Zannad F, Zhao JH, Hemingway H, Samani NJ, McMurray JJV, Yang J, Visscher
577 PM, Newton-Cheh C, Malarstig A, Holm H, Lubitz SA, Sattar N, Holmes MV,
578 Cappola TP, Asselbergs FW, Hingorani AD, Kuchenbaecker K, Ellinor PT, Lang CC,
579 Stefansson K, Smith JG, Vasan RS, Swerdlow DI and Lumbers RT. Genome-wide
580 association and Mendelian randomisation analysis provide insights into the
581 pathogenesis of heart failure. *Nature communications*. 2020;11:163.

582 27. Locke AE, Kahali B, Berndt SI, Justice AE, Pers TH, Day FR, Powell C, Vedantam
583 S, Buchkovich ML, Yang J, Croteau-Chonka DC, Esko T, Fall T, Ferreira T,
584 Gustafsson S, Kutalik Z, Luan J, Mägi R, Randall JC, Winkler TW, Wood AR,
585 Workalemahu T, Faul JD, Smith JA, Zhao JH, Zhao W, Chen J, Fehrmann R, Hedman
586 Å K, Karjalainen J, Schmidt EM, Absher D, Amin N, Anderson D, Beekman M, Bolton
587 JL, Bragg-Gresham JL, Buyske S, Demirkan A, Deng G, Ehret GB, Feenstra B, Feitosa
588 MF, Fischer K, Goel A, Gong J, Jackson AU, Kanoni S, Kleber ME, Kristiansson K,
589 Lim U, Lotay V, Mangino M, Leach IM, Medina-Gomez C, Medland SE, Nalls MA,
590 Palmer CD, Pasko D, Pechlivanis S, Peters MJ, Prokopenko I, Shungin D, Stančákov

591 á A, Strawbridge RJ, Sung YJ, Tanaka T, Teumer A, Trompet S, van der Laan SW,
592 van Setten J, Van Vliet-Ostaptchouk JV, Wang Z, Yengo L, Zhang W, Isaacs A,
593 Albrecht E, Ärnlöv J, Arscott GM, Attwood AP, Bandinelli S, Barrett A, Bas IN, Bellis
594 C, Bennett AJ, Berne C, Blagieva R, Blüher M, Böhringer S, Bonnycastle LL, Böttcher
595 Y, Boyd HA, Bruinenberg M, Caspersen IH, Chen YI, Clarke R, Daw EW, de Craen
596 AJM, Delgado G, Dimitriou M, Doney ASF, Eklund N, Estrada K, Eury E, Folkersen
597 L, Fraser RM, Garcia ME, Geller F, Giedraitis V, Gigante B, Go AS, Golay A, Goodall
598 AH, Gordon SD, Gorski M, Grabe HJ, Grallert H, Grammer TB, Gräßler J, Grönberg
599 H, Groves CJ, Gusto G, Haessler J, Hall P, Haller T, Hallmans G, Hartman CA,
600 Hassinen M, Hayward C, Heard-Costa NL, Helmer Q, Hengstenberg C, Holmen O,
601 Hottenga JJ, James AL, Jeff JM, Johansson Å, Jolley J, Juliusdottir T, Kinnunen L,
602 Koenig W, Koskenvuo M, Kratzer W, Laitinen J, Lamina C, Leander K, Lee NR,
603 Lichtner P, Lind L, Lindström J, Lo KS, Lobbens S, Lorbeer R, Lu Y, Mach F,
604 Magnusson PKE, Mahajan A, McArdle WL, McLachlan S, Menni C, Merger S,
605 Mihailov E, Milani L, Moayyeri A, Monda KL, Morken MA, Mulas A, Müller G,
606 Müller-Nurasyid M, Musk AW, Nagaraja R, Nöthen MM, Nolte IM, Pilz S, Rayner
607 NW, Renstrom F, Rettig R, Ried JS, Ripke S, Robertson NR, Rose LM, Sanna S,
608 Scharnagl H, Scholtens S, Schumacher FR, Scott WR, Seufferlein T, Shi J, Smith AV,
609 Smolonska J, Stanton AV, Steinthorsdottir V, Stirrups K, Stringham HM, Sundström
610 J, Swertz MA, Swift AJ, Syvänen AC, Tan ST, Tayo BO, Thorand B, Thorleifsson G,
611 Tyrer JP, Uh HW, Vandenput L, Verhulst FC, Vermeulen SH, Verweij N, Vonk JM,
612 Waite LL, Warren HR, Waterworth D, Weedon MN, Wilkens LR, Willenborg C,

613 Wilsgaard T, Wojczynski MK, Wong A, Wright AF, Zhang Q, Brennan EP, Choi M,
614 Dastani Z, Drong AW, Eriksson P, Franco-Cereceda A, Gådin JR, Gharavi AG,
615 Goddard ME, Handsaker RE, Huang J, Karpe F, Kathiresan S, Keildson S, Kiryluk K,
616 Kubo M, Lee JY, Liang L, Lifton RP, Ma B, McCarroll SA, McKnight AJ, Min JL,
617 Moffatt MF, Montgomery GW, Murabito JM, Nicholson G, Nyholt DR, Okada Y,
618 Perry JRB, Dorajoo R, Reinmaa E, Salem RM, Sandholm N, Scott RA, Stolk L,
619 Takahashi A, Tanaka T, van 't Hooft FM, Vinkhuyzen AAE, Westra HJ, Zheng W,
620 Zondervan KT, Heath AC, Arveiler D, Bakker SJL, Beilby J, Bergman RN, Blangero
621 J, Bovet P, Campbell H, Caulfield MJ, Cesana G, Chakravarti A, Chasman DI, Chines
622 PS, Collins FS, Crawford DC, Cupples LA, Cusi D, Danesh J, de Faire U, den Ruijter
623 HM, Dominiczak AF, Erbel R, Erdmann J, Eriksson JG, Farrall M, Felix SB, Ferrannini
624 E, Ferrières J, Ford I, Forouhi NG, Forrester T, Franco OH, Gansevoort RT, Gejman
625 PV, Gieger C, Gottesman O, Gudnason V, Gyllenstein U, Hall AS, Harris TB,
626 Hattersley AT, Hicks AA, Hindorff LA, Hingorani AD, Hofman A, Homuth G,
627 Hovingh GK, Humphries SE, Hunt SC, Hyppönen E, Illig T, Jacobs KB, Jarvelin MR,
628 Jöckel KH, Johansen B, Jousilahti P, Jukema JW, Jula AM, Kaprio J, Kastelein JJP,
629 Keinanen-Kiukkaanniemi SM, Kiemeny LA, Knekt P, Kooner JS, Kooperberg C,
630 Kovacs P, Kraja AT, Kumari M, Kuusisto J, Lakka TA, Langenberg C, Marchand LL,
631 Lehtimäki T, Lyssenko V, Männistö S, Marette A, Matise TC, McKenzie CA,
632 McKnight B, Moll FL, Morris AD, Morris AP, Murray JC, Nelis M, Ohlsson C,
633 Oldehinkel AJ, Ong KK, Madden PAF, Pasterkamp G, Peden JF, Peters A, Postma
634 DS, Pramstaller PP, Price JF, Qi L, Raitakari OT, Rankinen T, Rao DC, Rice TK, Ridker

PM, Rioux JD, Ritchie MD, Rudan I, Salomaa V, Samani NJ, Saramies J, Sarzynski
MA, Schunkert H, Schwarz PEH, Sever P, Shuldiner AR, Sinisalo J, Stolk RP, Strauch
K, Tönjes A, Trégouët DA, Tremblay A, Tremoli E, Virtamo J, Vohl MC, Völker U,
Waeber G, Willemsen G, Witteman JC, Zillikens MC, Adair LS, Amouyel P,
Asselbergs FW, Assimes TL, Bochud M, Boehm BO, Boerwinkle E, Bornstein SR,
Bottinger EP, Bouchard C, Cauchi S, Chambers JC, Chanock SJ, Cooper RS, de
Bakker PIW, Dedoussis G, Ferrucci L, Franks PW, Froguel P, Groop LC, Haiman CA,
Hamsten A, Hui J, Hunter DJ, Hveem K, Kaplan RC, Kivimaki M, Kuh D, Laakso M,
Liu Y, Martin NG, März W, Melbye M, Metspalu A, Moebus S, Munroe PB, Njølstad
I, Oostra BA, Palmer CNA, Pedersen NL, Perola M, Pérusse L, Peters U, Power C,
Quertermous T, Rauramaa R, Rivadeneira F, Saaristo TE, Saleheen D, Sattar N,
Schadt EE, Schlessinger D, Slagboom PE, Snieder H, Spector TD, Thorsteinsdottir
U, Stumvoll M, Tuomilehto J, Uitterlinden AG, Uusitupa M, van der Harst P, Walker
M, Wallaschofski H, Wareham NJ, Watkins H, Weir DR, Wichmann HE, Wilson JF,
Zanen P, Borecki IB, Deloukas P, Fox CS, Heid IM, O'Connell JR, Strachan DP,
Stefansson K, van Duijn CM, Abecasis GR, Franke L, Frayling TM, McCarthy MI,
Visscher PM, Scherag A, Willer CJ, Boehnke M, Mohlke KL, Lindgren CM,
Beckmann JS, Barroso I, North KE, Ingelsson E, Hirschhorn JN, Loos RJF and
Speliotes EK. Genetic studies of body mass index yield new insights for obesity
biology. *Nature*. 2015;518:197-206.

28. Evangelou E, Warren HR, Mosen-Ansorena D, Mifsud B, Pazoki R, Gao H,
Ntritsos G, Dimou N, Cabrera CP, Karaman I, Ng FL, Evangelou M, Witkowska K,

657 Tzanis E, Hellwege JN, Giri A, Velez Edwards DR, Sun YV, Cho K, Gaziano JM,
658 Wilson PWF, Tsao PS, Kovesdy CP, Esko T, Mägi R, Milani L, Almgren P, Boutin T,
659 Debette S, Ding J, Giulianini F, Holliday EG, Jackson AU, Li-Gao R, Lin WY, Luan J,
660 Mangino M, Oldmeadow C, Prins BP, Qian Y, Sargurupremraj M, Shah N,
661 Surendran P, Thériault S, Verweij N, Willems SM, Zhao JH, Amouyel P, Connell J,
662 de Mutsert R, Doney ASF, Farrall M, Menni C, Morris AD, Noordam R, Paré G,
663 Poulter NR, Shields DC, Stanton A, Thom S, Abecasis G, Amin N, Arking DE, Ayers
664 KL, Barbieri CM, Batini C, Bis JC, Blake T, Bochud M, Boehnke M, Boerwinkle E,
665 Boomsma DI, Bottinger EP, Braund PS, Brumat M, Campbell A, Campbell H,
666 Chakravarti A, Chambers JC, Chauhan G, Ciullo M, Cocca M, Collins F, Cordell HJ,
667 Davies G, de Borst MH, de Geus EJ, Deary IJ, Deelen J, Del Greco MF, Demirkale
668 CY, Dörr M, Ehret GB, Elosua R, Enroth S, Erzurumluoglu AM, Ferreira T, Frånberg
669 M, Franco OH, Gandin I, Gasparini P, Giedraitis V, Gieger C, Girotto G, Goel A, Gow
670 AJ, Gudnason V, Guo X, Gyllensten U, Hamsten A, Harris TB, Harris SE, Hartman
671 CA, Havulinna AS, Hicks AA, Hofer E, Hofman A, Hottenga JJ, Huffman JE, Hwang
672 SJ, Ingelsson E, James A, Jansen R, Jarvelin MR, Joehanes R, Johansson Å, Johnson
673 AD, Joshi PK, Jousilahti P, Jukema JW, Jula A, Kähönen M, Kathiresan S, Keavney
674 BD, Khaw KT, Knekt P, Knight J, Kolcic I, Kooner JS, Koskinen S, Kristiansson K,
675 Kutalik Z, Laan M, Larson M, Launer LJ, Lehne B, Lehtimäki T, Liewald DCM, Lin L,
676 Lind L, Lindgren CM, Liu Y, Loos RJF, Lopez LM, Lu Y, Lyytikäinen LP, Mahajan A,
677 Mamasoula C, Marrugat J, Marten J, Milaneschi Y, Morgan A, Morris AP, Morrison
678 AC, Munson PJ, Nalls MA, Nandakumar P, Nelson CP, Niiranen T, Nolte IM, Nutile

679 T, Oldehinkel AJ, Oostra BA, O'Reilly PF, Org E, Padmanabhan S, Palmas W, Palotie
680 A, Pattie A, Penninx B, Perola M, Peters A, Polasek O, Pramstaller PP, Nguyen QT,
681 Raitakari OT, Ren M, Rettig R, Rice K, Ridker PM, Ried JS, Riese H, Ripatti S, Robino
682 A, Rose LM, Rotter JI, Rudan I, Ruggiero D, Saba Y, Sala CF, Salomaa V, Samani NJ,
683 Sarin AP, Schmidt R, Schmidt H, Shrine N, Siscovick D, Smith AV, Snieder H, Söber
684 S, Sorice R, Starr JM, Stott DJ, Strachan DP, Strawbridge RJ, Sundström J, Swertz
685 MA, Taylor KD, Teumer A, Tobin MD, Tomaszewski M, Toniolo D, Traglia M,
686 Trompet S, Tuomilehto J, Tzourio C, Uitterlinden AG, Vaez A, van der Most PJ, van
687 Duijn CM, Vergnaud AC, Verwoert GC, Vitart V, Völker U, Vollenweider P, Vuckovic
688 D, Watkins H, Wild SH, Willemsen G, Wilson JF, Wright AF, Yao J, Zemunik T, Zhang
689 W, Attia JR, Butterworth AS, Chasman DI, Conen D, Cucca F, Danesh J, Hayward C,
690 Howson JMM, Laakso M, Lakatta EG, Langenberg C, Melander O, Mook-Kanamori
691 DO, Palmer CNA, Risch L, Scott RA, Scott RJ, Sever P, Spector TD, van der Harst P,
692 Wareham NJ, Zeggini E, Levy D, Munroe PB, Newton-Cheh C, Brown MJ, Metspalu
693 A, Hung AM, O'Donnell CJ, Edwards TL, Psaty BM, Tzoulaki I, Barnes MR, Wain LV,
694 Elliott P and Caulfield MJ. Genetic analysis of over 1 million people identifies 535
695 new loci associated with blood pressure traits. *Nat Genet.* 2018;50:1412-1425.
696 29. Willer CJ, Schmidt EM, Sengupta S, Peloso GM, Gustafsson S, Kanoni S, Ganna
697 A, Chen J, Buchkovich ML, Mora S, Beckmann JS, Bragg-Gresham JL, Chang HY,
698 Demirkan A, Den Hertog HM, Do R, Donnelly LA, Ehret GB, Esko T, Feitosa MF,
699 Ferreira T, Fischer K, Fontanillas P, Fraser RM, Freitag DF, Gurdasani D, Heikkilä K,
700 Hyppönen E, Isaacs A, Jackson AU, Johansson Å, Johnson T, Kaakinen M, Kettunen

701 J, Kleber ME, Li X, Luan J, Lyytikäinen LP, Magnusson PKE, Mangino M, Mihailov E,
702 Montasser ME, Müller-Nurasyid M, Nolte IM, O'Connell JR, Palmer CD, Perola M,
703 Petersen AK, Sanna S, Saxena R, Service SK, Shah S, Shungin D, Sidore C, Song C,
704 Strawbridge RJ, Surakka I, Tanaka T, Teslovich TM, Thorleifsson G, Van den Herik
705 EG, Voight BF, Volcik KA, Waite LL, Wong A, Wu Y, Zhang W, Absher D, Asiki G,
706 Barroso I, Been LF, Bolton JL, Bonnycastle LL, Brambilla P, Burnett MS, Cesana G,
707 Dimitriou M, Doney ASF, Döring A, Elliott P, Epstein SE, Ingi Eyjolfsson G, Gigante
708 B, Goodarzi MO, Grallert H, Gravito ML, Groves CJ, Hallmans G, Hartikainen AL,
709 Hayward C, Hernandez D, Hicks AA, Holm H, Hung YJ, Illig T, Jones MR, Kaleebu
710 P, Kastelein JJP, Khaw KT, Kim E, Klopp N, Komulainen P, Kumari M, Langenberg
711 C, Lehtimäki T, Lin SY, Lindström J, Loos RJF, Mach F, McArdle WL, Meisinger C,
712 Mitchell BD, Müller G, Nagaraja R, Narisu N, Nieminen TVM, Nsubuga RN,
713 Olafsson I, Ong KK, Palotie A, Papamarkou T, Pomilla C, Pouta A, Rader DJ, Reilly
714 MP, Ridker PM, Rivadeneira F, Rudan I, Ruukonen A, Samani N, Scharnagl H,
715 Seeley J, Silander K, Stančáková A, Stirrups K, Swift AJ, Tirit L, Uitterlinden AG, van
716 Pelt LJ, Vedantam S, Wainwright N, Wijmenga C, Wild SH, Willemsen G, Wilsgaard
717 T, Wilson JF, Young EH, Zhao JH, Adair LS, Arveiler D, Assimes TL, Bandinelli S,
718 Bennett F, Bochud M, Boehm BO, Boomsma DI, Borecki IB, Bornstein SR, Bovet P,
719 Burnier M, Campbell H, Chakravarti A, Chambers JC, Chen YI, Collins FS, Cooper
720 RS, Danesh J, Dedoussis G, de Faire U, Feranil AB, Ferrières J, Ferrucci L, Freimer
721 NB, Gieger C, Groop LC, Gudnason V, Gyllenstein U, Hamsten A, Harris TB,
722 Hingorani A, Hirschhorn JN, Hofman A, Hovingh GK, Hsiung CA, Humphries SE,

723 Hunt SC, Hveem K, Iribarren C, Järvelin MR, Jula A, Kähönen M, Kaprio J, Kesäniemi
724 A, Kivimäki M, Kooner JS, Koudstaal PJ, Krauss RM, Kuh D, Kuusisto J, Kyvik KO,
725 Laakso M, Lakka TA, Lind L, Lindgren CM, Martin NG, März W, McCarthy MI,
726 McKenzie CA, Meneton P, Metspalu A, Moilanen L, Morris AD, Munroe PB,
727 Njølstad I, Pedersen NL, Power C, Pramstaller PP, Price JF, Psaty BM, Quertermous
728 T, Rauramaa R, Saleheen D, Salomaa V, Sanghera DK, Saramies J, Schwarz PEH,
729 Sheu WH, Shuldiner AR, Siegbahn A, Spector TD, Stefansson K, Strachan DP, Tayo
730 BO, Tremoli E, Tuomilehto J, Uusitupa M, van Duijn CM, Vollenweider P, Wallentin
731 L, Wareham NJ, Whitfield JB, Wolffenbuttel BHR, Ordovas JM, Boerwinkle E,
732 Palmer CNA, Thorsteinsdottir U, Chasman DI, Rotter JI, Franks PW, Ripatti S,
733 Cupples LA, Sandhu MS, Rich SS, Boehnke M, Deloukas P, Kathiresan S, Mohlke
734 KL, Ingelsson E and Abecasis GR. Discovery and refinement of loci associated with
735 lipid levels. *Nat Genet.* 2013;45:1274-1283.

736 30. Tian X, Zuo Y, Chen S, Liu Q, Tao B, Wu S and Wang A. Triglyceride-glucose
737 index is associated with the risk of myocardial infarction: an 11-year prospective
738 study in the Kailuan cohort. *Cardiovasc Diabetol.* 2021;20:19.

739 31. Huang R, Lin Y, Ye X, Zhong X, Xie P, Li M, Zhuang X and Liao X. Triglyceride-
740 glucose index in the development of heart failure and left ventricular dysfunction:
741 analysis of the ARIC study. *Eur J Prev Cardiol.* 2022.

742 32. Banerjee D, Biggs ML, Mercer L, Mukamal K, Kaplan R, Barzilay J, Kuller L, Kizer
743 JR, Djousse L, Tracy R, Zieman S, Lloyd-Jones D, Siscovick D and Carnethon M.
744 Insulin resistance and risk of incident heart failure: Cardiovascular Health Study.

745 *Circ Heart Fail.* 2013;6:364-70.

746 33. Vardeny O, Gupta DK, Claggett B, Burke S, Shah A, Loehr L, Rasmussen-Torvik
747 L, Selvin E, Chang PP, Aguilar D and Solomon SD. Insulin resistance and incident
748 heart failure the ARIC study (Atherosclerosis Risk in Communities). *JACC Heart Fail.*
749 2013;1:531-6.

750 34. Wamil M, Coleman RL, Adler AI, McMurray JJV and Holman RR. Increased Risk
751 of Incident Heart Failure and Death Is Associated With Insulin Resistance in People
752 With Newly Diagnosed Type 2 Diabetes: UKPDS 89. *Diabetes Care.* 2021;44:1877-
753 1884.

754 35. Kolwicz SC, Jr., Purohit S and Tian R. Cardiac metabolism and its interactions
755 with contraction, growth, and survival of cardiomyocytes. *Circ Res.* 2013;113:603-
756 16.

757 36. Yazıcı D and Sezer H. Insulin Resistance, Obesity and Lipotoxicity. *Adv Exp*
758 *Med Biol.* 2017;960:277-304.

759 37. Nishida K and Otsu K. Inflammation and metabolic cardiomyopathy.
760 *Cardiovasc Res.* 2017;113:389-398.

761 38. Samuelsson AM, Bollano E, Mobini R, Larsson BM, Omerovic E, Fu M,
762 Waagstein F and Holmäng A. Hyperinsulinemia: effect on cardiac mass/function,
763 angiotensin II receptor expression, and insulin signaling pathways. *Am J Physiol*
764 *Heart Circ Physiol.* 2006;291:H787-96.

765 39. Peters SA, Huxley RR and Woodward M. Diabetes as risk factor for incident
766 coronary heart disease in women compared with men: a systematic review and

767 meta-analysis of 64 cohorts including 858,507 individuals and 28,203 coronary
768 events. *Diabetologia*. 2014;57:1542-51.

769 40. Gerdtz E and Regitz-Zagrosek V. Sex differences in cardiometabolic disorders.
770 *Nat Med*. 2019;25:1657-1666.

771 41. Tramunt B, Smati S, Grandgeorge N, Lenfant F, Arnal JF, Montagner A and
772 Gourdy P. Sex differences in metabolic regulation and diabetes susceptibility.
773 *Diabetologia*. 2020;63:453-461.

774 42. Toedebusch R, Belenchia A and Pulakat L. Diabetic Cardiomyopathy: Impact
775 of Biological Sex on Disease Development and Molecular Signatures. *Front Physiol*.
776 2018;9:453.

777 43. Murphy E, Amanakis G, Fillmore N, Parks RJ and Sun J. Sex Differences in
778 Metabolic Cardiomyopathy. *Cardiovasc Res*. 2017;113:370-377.

779 44. Vasques AC, Novaes FS, de Oliveira Mda S, Souza JR, Yamanaka A, Pareja JC,
780 Tambascia MA, Saad MJ and Geloneze B. TyG index performs better than HOMA
781 in a Brazilian population: a hyperglycemic clamp validated study. *Diabetes Res*
782 *Clin Pract*. 2011;93:e98-e100.

783 45. Toro-Huamanchumo CJ, Urrunaga-Pastor D, Guarnizo-Poma M, Lazaro-
784 Alcantara H, Paico-Palacios S, Pantoja-Torres B, Ranilla-Seguin VDC and Benites-
785 Zapata VA. Triglycerides and glucose index as an insulin resistance marker in a
786 sample of healthy adults. *Diabetes Metab Syndr*. 2019;13:272-277.

787 46. Ormazabal V, Nair S, Elfeky O, Aguayo C, Salomon C and Zuñiga FA.
788 Association between insulin resistance and the development of cardiovascular

789 disease. *Cardiovasc Diabetol*. 2018;17:122.

790 47. Lakhani I, Leung KSK, Tse G and Lee APW. Novel Mechanisms in Heart Failure

791 With Preserved, Midrange, and Reduced Ejection Fraction. *Front Physiol*.

792 2019;10:874.

793

794

795 **Table 1. The baseline characteristics of subjects in the Kailuan Cohort.**

Characteristics	Total	TyG index			
		Q1	Q2	Q3	Q4
		3.60-8.18	8.18-8.57	8.57-9.05	9.05-12.51
Subjects (n)	95,996	23,997	24,000	24,001	23,998
TyG index	8.65±0.69	7.85±0.27	8.38±0.11	8.79±0.14	9.58±0.46
Age, years	51.4±12.5	50.2±13.7	51.4±12.7	52.1±12.2	52.0±11.4
Male, n (%)	76,364(79.6)	17,655(73.6)	18,994(79.1)	19,501(81.3)	20,214(84.2)
Height (cm)	167.4±7.0	166.7±7.0	167.5±7.0	167.6±7.0	167.9±6.9
BMI (kg/m ²)	25.0±3.5	23.4±3.2	24.6±3.3	25.6±3.3	26.4±3.4
Completed high school, n (%)	18,746(19.5)	5673(23.6)	4483(18.7)	4448(18.5)	4142(17.3)
Income≥800¥, n (%)	13,133(13.7)	3563(14.9)	3093(12.9)	3234(13.5)	3243(13.5)
Daily Smoker, n (%)	28,675(29.9)	6902(28.8)	6741(28.1)	7173(29.9)	7859(32.8)
Daily alcohol user, n (%)	16,725(17.4)	3891(16.2)	3834(16.0)	4125(17.2)	4875(20.3)
Activity physical activity, n (%)	13,935(14.5)	3654(15.2)	3356(14.0)	3535(14.7)	3390(14.1)
Systolic BP, mmHg	131±21	124±20	129±20	132±21	136±21
Diastolic BP, mmHg	83±12	80±11	83±11	85±1	87±12
FBG, mmol/L	5.47±1.67	4.80±0.68	5.09±0.76	5.44±1.11	6.54±2.66
TC, mg/dL	190.9±44.1	179.3±35.6	190.2±37.3	197.9±39.0	196.4±58.1

LDL-c, mg/dL	90.6±35.2	84.3±35.8	92.2±33.3	94.7±33.99	91.2±36.7
HDL-c, mg/dL	59.8±15.5	60.5±15.7	60.3±14.8	59.3±15.1	59.0±16.3
TG, mg/dL	112.4 (78.8-170.8)	62.0 (51.3-72.6)	97.4 (86.7-108.0)	137.2 (120.4-158.4)	245.1 (192.9-346.0)
hs-CRP, mg/dl	0.80 (0.30-2.16)	0.60 (0.21-1.84)	0.72 (0.29-1.99)	0.88 (0.33-2.16)	1.02 (0.40-2.61)
eGFR, mL/min/1.73m ²	82.3±25.7	85.8±26.8	81.8±25.4	81.4±22.8	80.5±27.2
Diabetes Mellitus, n (%)	8408(8.8)	223(0.9)	542(2.3)	1699(7.1)	5944(24.8)
Hypertension, n (%)	4,1072(42.8)	6847(28.5)	9651(40.2)	11316(47.2)	13258(55.3)
Anti-hypertensive drugs, n (%)	9453(9.9)	1440(6.0)	1915(8.0)	2714(11.3)	3384(14.1)
Lipid-lowering drugs, n (%)	709(0.7)	81(0.3)	130(0.5)	168(0.7)	330(1.4)
Diabetes drugs, n (%)	2048(2.1)	121(0.5)	209(0.9)	442(1.8)	1273(5.3)

796 Abbreviations: BMI: body mass index; BP: blood pressure; FBG: fasting blood glucose;
797 TC: total cholesterol; LDL-c: low density lipoprotein cholesterol; HDL-c: low density
798 lipoprotein cholesterol; TG: triglyceride; eGFR: estimated glomerular filtration rate;
799 hs-CRP: high sensitivity C-reactive protein.
800

801 **Table 2. The baseline characteristics of subjects in the cohort from Hong Kong.**

Characteristics	Total	TyG index			
		Q1	Q2	Q3	Q4
		4.78-6.89	6.90-7.31	7.32-7.80	7.81-11.38
Subjects (n)	19,345	4,861	4,859	4,812	4,813
TyG index	7.36±0.68	6.54±0.27	7.10±0.12	7.54±0.14	8.26±0.42
Age, years	60.1±12.9	58.1±13.9	60.6±12.9	60.6±12.3	61.3±12.2
Male, n (%)	7738 (40.0)	1780 (36.6)	1971 (40.6)	1935 (40.2)	2052 (42.6)
Systolic BP, mmHg	139±21	136±21	139±20	140±20	142±20
Diastolic BP, mmHg	76±11	75±12	76±11	77±11	77±11
FBG, mmol/L	6.79±3.18	5.35±0.97	5.96±1.41	6.72±2.19	9.16±4.94
TC, mg/dL	208.4±42.0	197.0±39.8	207.4±40.9	212.4±41.1	217.2±43.5
LDL-c, mg/dL	124.7±37.4	119.6±35.5	128.3±37.2	128.5±37.3	122.4±38.9
HDL-c, mg/dL	52.6±14.6	61.0±15.7	53.9±14.0	49.5±12.1	46.0±11.7
TG, mg/dL	124.0	743.5	115.1	160.3	221.4
	(88.6-179.8)	(60.2-88.6)	(98.3-132.0)	(127.5-189.5)	(159.4-292.3)
Dyslipidemia, n (%)	9099 (47.0)	1930 (39.7)	2273 (46.8)	2446 (50.8)	2450 (50.9)
Diabetes Mellitus, n (%)	6524(33.7)	559 (11.5)	1138 (23.4)	1816 (37.7)	3011 (62.6)
Hypertension, n (%)	11,809 (61.0)	2591 (53.3)	2974 (61.2)	3037 (63.1)	3207 (66.6)
Chronic kidney disease, n (%)	2930 (15.2)	543 (11.2)	730 (15.0)	744 (15.5)	913 (19.0)

Anti-hypertensive drugs, n (%)	3834 (19.8)	755 (15.5)	990 (20.4)	1011 (21.0)	1078 (22.4)
Lipid-lowering drugs, n (%)	1586 (8.2)	303 (6.2)	373 (7.7)	419 (8.7)	491 (10.2)
Diabetes drugs, n (%)	995 (5.1)	110 (2.3)	194 (4.0)	246 (5.1)	445 (9.3)
Antiplatelets, n (%)	814 (4.2)	159 (3.3)	191 (3.9)	216 (4.5)	248 (5.2)

802

803

Table 3. Association between baseline TyG and incident heart failure in the Kailuan cohort.

	Q1	Q2	Q3	Q4	<i>P</i> for trend	Per unit increment	<i>P</i> value
Number of patients	23,997	24,000	24,001	23,998			
HF cases	497	576	729	924			
Persons	23997	24000	24001	23998			
Person-years	297098	295908	294857	292552			
HF incidence ¹	1.67(1.53-1.83)	1.95(1.79-2.11)	2.47(2.30-2.66)	3.16(2.96-3.37)			
Model 1 ²	1	1.16(1.03-1.31)	1.48(1.32-1.66)	1.90(1.70-2.11)	<0.001	1.44(1.37-1.51)	<0.001
Model 2 ³	1	1.12(1.00-1.27)	1.41(1.26-1.58)	1.90(1.70-2.12)	<0.001	1.47(1.40-1.55)	<0.001
Model 3 ⁴	1	1.00(0.88-1.12)	1.12(1.00-1.26)	1.23(1.09-1.39)	<0.001	1.17(1.10-1.24)	<0.001
Sensitivity analysis							
Sensitivity analysis 1 ⁵	1	1.00(0.88-1.13)	1.14(1.01-1.28)	1.23(1.10-1.41)	<0.001	1.18(1.10-1.25)	<0.001

Sensitivity analysis 2 ⁶	1	0.97(0.84-1.11)	1.11(0.98-1.27)	1.17(1.02-1.34)	0.006	1.13(1.06-1.22)	<0.001
Competing risk regression ⁷	1	1.01(0.90-1.14)	1.14(1.02-1.29)	1.25(1.10-1.41)	<0.001	1.18(1.10-1.25)	<0.001

¹ HF incidence; The incidence rates per 1000 person years with the corresponding 95% confidence intervals are shown

² Model 1: Unadjusted. The hazard ratios with the corresponding 95% confidence intervals are shown.

³ Model 2: Age-sex adjusted. The hazard ratios with the corresponding 95% confidence intervals are shown.

⁴ Model 3: Adjusted for age, gender, education, income, physical activity, smoking status, alcohol intake, diabetes, LDL-c, HDL-c, SBP, DBP, BMI, eGFR, hs-CRP, anti-hypertensive drugs, anti-diabetes drugs, and lipid-lowering drugs. The hazard ratios with the corresponding 95% confidence intervals are shown.

⁵ Sensitivity analysis 1: exclude follow-up time less than 2 years, remained 95,275 subjects with 2,497 HF cases. The hazard ratios with the corresponding 95% confidence intervals are shown.

⁶ Sensitivity analysis 2: exclude subjects with medication at baseline (anti-hypertension drugs, lipid lower drugs, anti-diabetes drugs), remained 85,118 subjects with 2,118 HF cases. The hazard ratios with the corresponding 95% confidence intervals are shown.

⁷ Competing risk regression: sub-hazard ratios with the corresponding 95% confidence intervals are shown.

Table 4. Association between baseline TyG index and incident heart failure in the cohort from Hong Kong.

	Q1	Q2	Q3	Q4	<i>P</i> for trend	Per unit increment	<i>P</i> value
Number of patients	4,861	4,859	4,812	4,813			
HF cases	342	404	454	509			
Persons	4861	4859	4812	4813			
Person-years	79,353	77,644	77,335	75,360			
HF incidence ¹	4.31(3.88-4.79)	5.20(4.72-5.74)	5.87(5.34-6.42)	6.75(6.19-7.37)			
Model 1 ²	1	1.21(1.05-1.40)	1.36(1.19-1.57)	1.58(1.38-1.82)	<0.001	1.30(1.22-1.39)	<0.001
Model 2 ³	1	1.09(0.94-1.26)	1.23(1.07-1.42)	1.39(1.21-1.59)	<0.001	1.23(1.14-1.31)	<0.001
Model 3 ⁴	1	1.07(0.92-1.23)	1.17(1.01-1.35)	1.21(1.04-1.40)	0.007	1.13(1.05-1.22)	0.001
Sensitivity analysis							
Sensitivity analysis 1 ⁵	1	1.07(0.92-1.23)	1.17(1.01-1.35)	1.22(1.05-1.41)	0.005	1.14(1.05-1.23)	0.001

Sensitivity analysis 2 ⁶	1	1.16(0.98-1.37)	1.22(1.03-1.45)	1.29(1.08-1.53)	0.005	1.16(1.06-1.27)	0.001
Competing risk regression ⁷	1	1.06(0.91-1.22)	1.21(1.04-1.40)	1.24(1.07-1.44)	0.001	1.15(1.06-1.24)	<0.001

¹ HF incidence; The incidence rates per 1000 person years with the corresponding 95% confidence intervals are shown

² Model 1: Unadjusted. The hazard ratios with the corresponding 95% confidence intervals are shown.

³ Model 2: Age-sex adjusted. The hazard ratios with the corresponding 95% confidence intervals are shown.

⁴ Model 3: Adjusted for age, sex, hypertension, diabetes mellitus, chronic kidney disease, dyslipidemia, antihypertensives, anti-diabetic drugs, antiplatelets, lipid-lowering drugs. The hazard ratios with the corresponding 95% confidence intervals are shown.

⁵ Sensitivity 1: exclude follow-up time less than 2 years, remained 19,227 subjects with 1,709 HF cases. The hazard ratios with the corresponding 95% confidence intervals are shown.

⁶ Sensitivity 2: exclude those with medications at baseline, remained 14,842 subjects with 1,223 HF cases. The hazard ratios with the corresponding 95% confidence intervals are shown.

⁷ Competing risk regression: sub-hazard ratios with the corresponding 95% confidence intervals are shown.

Figure legends.

Figure 1. Kaplan-Meier curve of the cumulative incidence of incident heart failure for the (A) Kailuan cohort and (B) Hong Kong cohort, stratifying by quartiles of the triglyceride-glucose index.

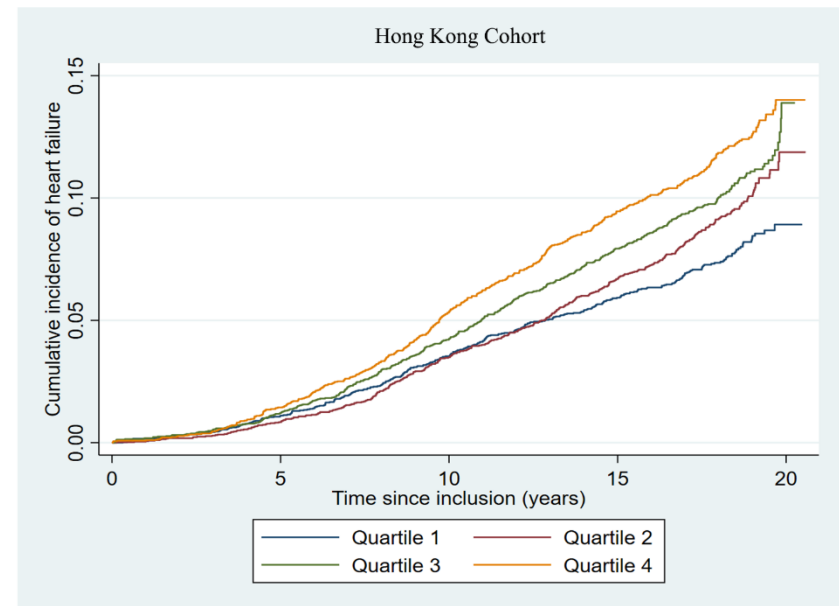
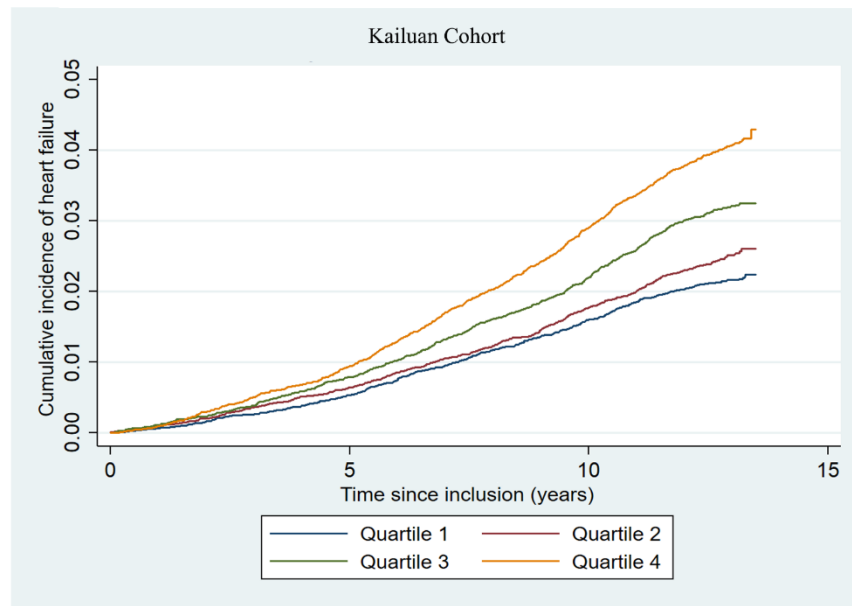


Figure 2. Subgroup analysis of the association between TyG index and incident HF for the (A) Kailuan cohort and (B) Hong Kong cohort. HR: hazard ratio; CI: confidence interval.

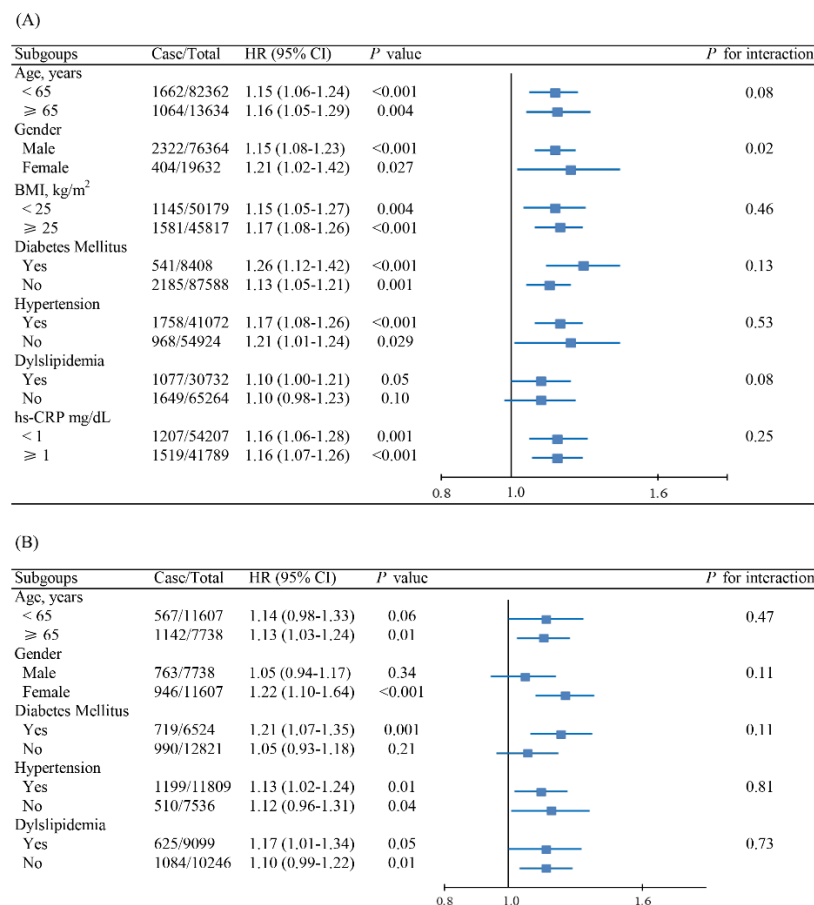


Figure 3. Forest plots for the meta-analysis of the association between TyG index with HF risk. (A) TyG index analyzed as a categorical variable.

(B) TyG index analyzed as a continuous variable.

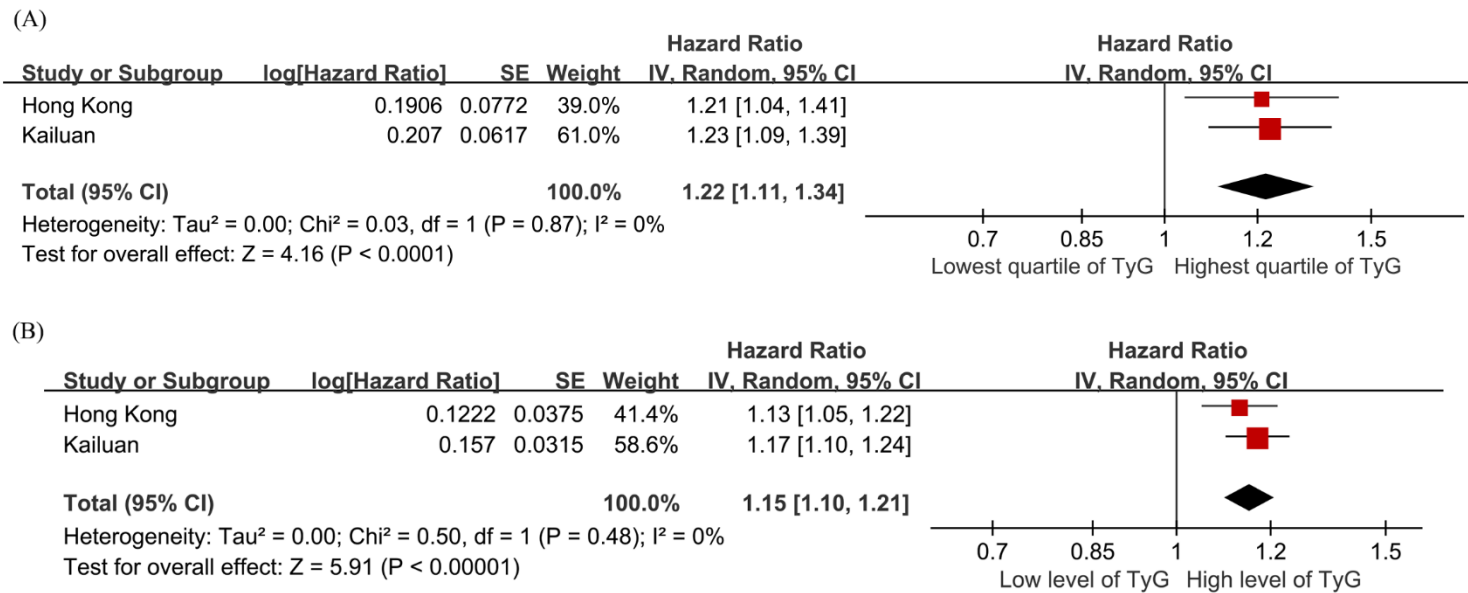


Figure 4. Mendelian randomization (MR) association between genetically determined TyG index and HF. Sensitivity analysis 1: multivariable MR through IVW method after adjusting for cofounders including BMI, SBP, DBP, LDL-c, and HDL-c. Sensitivity analysis 2: MR analysis through IVW after excluding any SNPs significantly associated with those cofounders, including BMI, SBP, DBP, LDL-c, and HDL-c. SNPs: single-nucleotide polymorphisms; OR: odds ratio; IVW: inverse-variance weighted.

