

1
2
3
4
5
6
7
8
9
10
11
12
13
14
15
16
17
18

Subgroups of people with high Autism-Spectrum Quotient scores identified from a large set of personality traits and attributes

Short title Subgroups in the high AQ-score population

Mao Fujiwara^{1,2}, Shotaro Numano^{1,2}, Toshiko Tanaka², Motoaki Nakamura³, Nobumasa Kato³, Masahiko Haruno^{1,3*}

¹ Graduate School of Frontier Bioscience, Osaka University, Osaka, Japan
² Center for Information and Neural Networks, National Institute of Information and Communications Technology, Osaka, Japan
³ Medical Institute of Developmental Disabilities Research, Showa University, Tokyo, Japan

*Corresponding author

19 E-mail: mharuno@nict.go.jp (MH)

Abstract

The Autism-Spectrum Quotient (AQ) is a widely used index to quantify autistic traits. Previous studies using clustering analysis have indicated that people showing high AQ and other autism indices may comprise several subtypes. However, those studies mainly focused on Big5 personality traits and analyzed a limited number of samples (participants). The inclusion of a larger set of personality traits and attributes would contribute not only to understanding autism more deeply, but also to characterizing AQ more precisely. In addition, an analysis of larger general populations would give new perspectives on people with high AQ scores. To address these issues, here we conducted a personality traits-based clustering of 1364 subjects who had an AQ score of 33 or higher (high AQ group) collected online. We identified three subclasses (subtypes): Group 1, characterized by emotional instability, low self-esteem, high hostility, anxiety, depressive tendency and schizotypal traits; Group 2, characterized by high BIS for an inhibitory attitude towards novelty, and high Interpersonal Reactivity Index (IRI) and Group 3, characterized by personality traits and attributes consistent of the average of the general population. Thus, this study provides empirical results showing subtypes of the high AQ population.

Introduction

Autism spectrum disorder (ASD) is a developmental disorder characterized by deficits in social communication and repetitive behaviors, including Asperger syndrome and pervasive developmental disorder, in addition to typical infantile autism. In general, ASD is seen in about 1% of the population and is 3~4 times more common in males than females [1]. The characteristics of ASD are on a continuum from clinical patients to normal individuals [2-4].

The Autism-Spectrum Quotient (AQ) was developed as a self-report questionnaire measure to quantify autistic characteristics [5]. Generally, the AQ is higher in males than in females and in scientists than in non-scientists [5,6]. Adults with Asperger's syndrome and high-functioning autism (AS/HFA) score significantly higher on the AQ than adults in the general population. These observations indicate that the AQ is a valid measure of autistic traits [5,7]. As for the relationship between the AQ and other disorder-related personality traits, there are relatively strong positive correlations between measures of social skills and communication in the AQ and the four sub-items of the Schizotypal Personality Questionnaire (SPQ)-interpersonal factors (social anxiety, suspicion, friendlessness, and emotional suppression) [8]. In addition,

almost half of women with borderline personality disorder (BPD) show high AQ scores, and comorbid BPD correlates with having a higher AQ score [9].

The relationship between the AQ and Big5, which describes basic personality traits, has been long studied. Wakabayashi et al. [7] found that AQ scores are negatively correlated with extraversion and conscientiousness, positively correlated with neuroticism, and not correlated with agreeableness. In contrast, Austin [6] reported that the AQ was negatively correlated with agreeableness. A recent meta-analysis of Big5 in ASD not only validated a negative association between each Big5 trait and ASD characteristics, but it also emphasized the importance of extending the relationship of ASD with personalities beyond Big5 such as attachment style, emotion regulation, alexithymia, and self-esteem [10].

Related to the above observations, there are many cases of the co-occurrence of autism with anxiety disorders (43-84%), depression (2-30%), obsessive-compulsive disorder (OCD; 37%), attention-deficit/hyperactivity disorder (59%), agitation and aggressive behavior (8-34%), and nonspecific abnormal behaviors, such as self-injury [11]. The data of these broad comorbidities and variable co-occurrence rates suggest that ASD may consist of several subclasses, and questionnaires about ASD need to link with these disorders. Such classes, if any, would contribute not only to understanding

ASD more deeply and developing future intervention methods for each class, but also to characterizing ASD indices such as AQ more precisely.

Indeed, to identify the subclasses, several studies have conducted a clustering of people with high ASD scores, although the majority of studies have treated this population with a high ASD score as a single group [12,13]. A study using the RAADS-R score (an index of ASD) identified four subtypes based on the Big5 factors. Specifically, cluster 1 has Big5 features similar to social phobia [11], and cluster 2 shows a Big5 score distribution similar to secondary psychopath and BPD [12]. Cluster 2 and cluster 3 have low agreeableness, extraversion, and average levels of emotional stability and conscientiousness but high happiness. Cluster 4 has the highest extraversion, agreeableness, and happiness among the four clusters [13]. That study examined 364 individuals with high ASD traits recruited from autism-related websites and based on the results of Big5 factors and subcategories, life satisfaction, and happiness. Another study clustered 2000 autistic individuals based on 123 item scores from the Autism Diagnostic Interview-Revised (ADI-R) [14] and reported four phenotypic clusters: the first associated with severe language deficits, the second with milder symptoms across the domains, the third with a higher frequency of savant skills, and the fourth with intermediate severity across all domains.

However, the clustering of these previous studies was based on the Big5 or an ASD index alone. In other words, the relationship between the AQ and personality traits other than the Big5 remains largely unknown. In addition, most studies were based on young populations, such as children and undergraduate students; the limited age range makes it difficult to draw general conclusions [6,15]. Furthermore, when examining general personality types, small sample sizes and the lack of reproducibility across data sets and methods have led to inconclusive results [16]. These findings suggest that a clustering analysis of a larger set of personality traits and attributes beyond the Big5 obtained from a larger and broader population offers useful insights about subclasses in the population with a high ASD score.

Here, we examined online data on AQ and a wide range of personality traits and attributes, including the Big5, psychopathy, schizophrenia, depression, OCD, and other mental illness indicators from a more general population (n=18948), and conducted a co-clustering analysis of 1364 individuals who had an AQ score of 33 or higher (high AQ group) to identify subgroups within this population. To guarantee the generality of the results, we used two distance measures for clustering with the Ward method: the Euclidean distance and the Manhattan distance.

Results

The number of clusters in the high AQ group was 3

We first conducted a Lasso regression to select personality traits and attributes that contributed to the AQ score. We then conducted a co-clustering of 1364 subjects with an AQ score ≥ 33 using 35 personality traits (and attributes) whose absolute value of the weights in the Lasso regression was greater than 0.0126, which amounted to 1/20 of the largest absolute value (Table 1) using the Ward method with two different distance measures: the Euclidian and Manhattan distances. We found the optimal number of clusters for this group was 3 for both measures (Fig 1). We show the results only for the Euclidian distance hereafter, as the clusters were comparable between the two distance measures (see S1 Fig. for the cluster structure from the Manhattan distance).

Table 1. Personality traits and Lasso regression weights used to determine the number of clusters.

Personality	Coefficient	Personality	Coefficient	Personality	Coefficient
Big5_E ^{c, k}	0.25257	IQ ^c	0.03040	BIS ^k	0.00810
SPQ_I ^{c, k}	0.24391	IRI_EC ^{c, k}	0.02984	RA	0.00808
SPQ_C ^{c, k}	0.20272	RSS ^{c, k}	0.02859	BAQ_P ^k	0.00497
SPQ_D ^{c, k}	0.12839	BAS_D ^{c, k}	0.02794	SES_parents	0.00378
Big5_O ^{c, k}	0.11126	PDI_CO ^c	0.02745	TIM	0.00269
Big5_A ^{c, k}	0.09556	SES_job ^c	0.02532	SVO_C	0.00133
FAD_FW ^c	0.07100	BAQ_H ^{c, k}	0.02325	OCIR_WA ^k	0

SDS ^{c, k}	0.06943	OCIR_ST ^{c, k}	0.02022	OCIR_OB ^k	0
Big5_N ^{c, k}	0.06760	PSPS_P ^c	0.01909	PDI_DE	0
BAS_R ^{c, k}	0.06725	RRQ_RE ^c	0.01834	PDI_DI	0
BAQ_A ^{c, k}	0.06720	PSPS_S ^c	0.01755	PDI_FR	0
OCIR_OR ^{c, k}	0.06683	STAI_S ^{c, k}	0.01557	PSS	0
IRI_PD ^{c, k}	0.06514	FAD_FD ^c	0.01546	SES_self	0
OCIR_NE ^{c, k}	0.06329	FAD_UP ^c	0.01521	SES_subj	0
BDI ^{c, k}	0.05434	BAQ_V ^{c, k}	0.01371	SHS ^k	0
IRI_F ^{c, k}	0.05109	SES_salary ^c	0.01269	SVO_P	0
Big5_C ^{c, k}	0.04368	OCIR_CH ^k	0.01257	SVO_I	0
RRQ_RU ^c	0.03574	FAD_SD	0.01169	STAI_T ^k	0
IRI_PT ^{c, k}	0.03423	BAS_S ^k	0.00911		

105 Absolute values of the coefficient (0.0126) amounted to 1/20 the largest absolute value
106 of weights in the Lasso regression analysis (in this case, the largest value was assigned
107 to Big5_E). The personality traits with values larger than 0.0126 were used both for the
108 clustering and for determining the number of clusters.

109 ^c what we used for clustering, ^k what we used for kernel density estimation

110

111 **Fig 1. Three clusters in the high AQ group.** The horizontal and vertical axes represent
112 the personality traits used for the clustering and the subjects, respectively, with each
113 square showing a standardized score of the corresponding horizontal personality trait of
114 the subject. Color scale: red, high score; purple, low score. For personality traits on the
115 horizontal axis, three blocks were identified: block 1 consisted of BAQ, SPQ, BDI,
116 OCIR, FAD_FD, and UP; block 2 consisted of Big5 and RSS; and block 3 consisted of

BIS/BAS and IRI. The high AQ group was clustered into three subgroups: 575 people for Group 1, 410 for Group 2, and 379 for Group 3.

The three groups are summarized as follows. In comparison with the mean values of the groups, Group 1 showed slightly higher scores on OCIR [17], BDI [18], SPQ [19], BIS [20], IRI [21] and STAI [22] and lower scores on the Big5 [23] other than Big5_N. Group 2 showed higher scores on BIS, the Big5 and IRI, and slightly higher scores on personality traits related to mental disorders, such as OCIR, SPQ. Lastly, Group 3 exhibited lower scores on OCIR, BDI and SPQ.

Characteristics of the three high AQ subgroups

An analysis of variance revealed that 52 out of 61 personality trait (sub-) scores including the AQ showed significant differences among the three groups (S2 Table). Figs 2-7 plot the probability density distribution of the personality trait scores for each group. In these figures, the vertical and horizontal axes show the percentage of the number of people and the scores, respectively, and p-values were calculated using Welch's T-test. The threshold for significance was set at 0.0002 (0.05 divided by the number of items used for the clustering, 35, and the combination of groups, 6).

Considering that the p-value tends to decrease with a larger sample size, this threshold was considered a minimum requirement.

Fig 2. AQ scores for each group. For AQ_S, Group 2 had a significantly higher mean value than Groups 1 and 3 (Group 2 vs. 1, $f=4.300$, $p=1.924e-05$; Group 2 vs. 3, $f=4.787$, $p=2.018e-06$). For AQ_A, Group 3 had a significantly lower mean value than Groups 1 and 2 (Group 3 vs. 1, $f=7.594$, $p=8.945e-14$; Group 3 vs. 2, $f=4.964$, $p=8.945e-07$). For AQ_D, Group 2 had a significantly higher mean value than Groups 1 and 3 (Group 2 vs. 1, $f=-6.033$, $p=2.339e-09$; Group 2 vs. 3, $f=7.624$, $p=7.182e-14$). For AQ_C, Group 1 had a significantly higher mean value than Groups 2 and 3 (Group 1 vs. 2, $f=6.726$, $p=3.133e-11$; Group 1 vs. 3, $f=7.608$, $p=7.976e-14$). For AQ_I, Group 3 had a significantly higher mean than Groups 1 and 2 (Group 3 vs. 1, $f=-3.574$, $p=0.0004$; Group 3 vs. 2, $f=-7.436$, $p=2.817e-13$). AQ_S: social skills, AQ_A: attention switching, AQ_D: attention to detail, AQ_C: communication, and AQ_I: imagination). Higher scores indicate stronger autistic traits; the higher the score, the stronger the autistic trait. In other words, a higher AQ_S means poorer social skills, a higher AQ_A means poorer attention switching, a higher AQ_D means higher attention to detail, a higher AQ_C means poorer communication, and a higher AQ_I means poorer imagination.

153

154 **Fig 3. Emotion-related items for each group.** For BAQ_P, BDI and SDS, Group 1

155 had significantly higher mean values than Groups 2 and 3 (BDI: Group 1 vs. 2,

156 $f=20.451$, $p=1.345e-77$; Group 1 vs. 3 $f=24.005$, $p=1.070e-98$; and SDS: Group 1 vs. 2,

157 $f=19.305$, $p=8.107e-70$; Group 1 vs. 3, $f=21.119$, $p=7.348e-78$). Group 1 also had

158 significantly lower mean values for STAI_S and STAI_T than Groups 2 and 3

159 (STAI_S: Group 1 vs. 2, $f=14.662$, $p=5.334e-44$; Group 1 vs. 3, $f=17.547$, $p=1.785e-$

160 59 ; and STAI_T: Group 1 vs. 2, $f=16.849$, $p=1.685e-55$; Group 1 vs. 3, $f=25.416$,

161 $p=2.595e-104$). For RSS, Group 1 had significantly lower mean values than groups 2

162 and 3 (RSS: Group 1 vs. 2, $f=-14.869$, $p=1.350e-44$; Group 1 vs. 3 $f=-16.700$, $p=$

163 $8.302e-53$). For SHS, Group 1 had significantly lower mean values than groups 2 and 3

164 (SHS: Group 1 vs. 2, $f=-12.871$, $p=7.515e-35$; Group 1 vs. 3 $f=-15.277$, $p=1.8612e-$

165 46). BDI: depression, SDS: depression, STAI_S: state anxiety, STAI_T: trait anxiety,

166 RSS: self-esteem, and SHS: subjective happiness. For BAQ_A and BAQ_H, Group 1

167 had significantly higher mean values than Groups 2 and 3 (BAQ_P: Group 1 vs. 2,

168 $f=8.762$, $p=8.907e-18$; Group 1 vs. 3, $f=9.587$, $p=8.745e-21$; BAQ_A: Group 1 vs. 2,

169 $f=10.325$, $p=1.045e-23$; Group 1 vs. 3, $f=17.013$, $p=3.841e-56$; and BAQ_H: Group 1

170 vs. 2, $f=15.761$, $p=2.372e-49$; Group 1 vs. 3, $f=21.482$, $p=2.118e-80$). For BAQ_V,

Group 1 had no significant difference with Groups 2 or 3 (Group 1 vs. 2, $f=-2.344$, $p=0.019$; Group 1 vs. 3, $f=-1.050$, $p=0.294$). BAQ_P: physical aggression, BAQ_A: short temper, BAQ_H: suspicion, and BAQ_V: verbal aggression.

Fig 4. Big5 for each group. For Big5_E, Group 2 had no significant difference with Groups 1 or 3 (Group 2 vs. 1, $f=-0.314$, $p=0.753$, Group 2 vs. 3, $f=-2.417$, $p=0.016$). For Big5_A, _C, and _O, Group 2 had significantly higher mean values than Groups 1 and 3 (Big5_A: Group 2 vs. 1, $f=-13.001$, $p=1.482e-35$; Group 2 vs. 3, $f=6.202$, $p=9.281e-10$; Big5_C: Group 2 vs. 1, $f=-10.410$, $p=7.135e-24$; Group 2 vs. 3, $f=4.716$, $p=2.844e-06$; and Big5_O: Group 2 vs. 1, $f=-11.016$, $p=1.639e-26$; Group 2 vs. 3, $f=5.205$, $p=2.519e-07$). For Big5_N, Group 3 had a significantly lower mean value than Groups 1 and 2 (Group 3 vs. 1, $f=23.443$, $p=7.967e-86$; Group 3 vs. 2, $f=17.100$, $p=6.190e-55$). Big5_E: extroversion, Big5_A: cooperativeness, Big5_C: diligence, Big5_N: neuroticism, and Big5_O: openness. For IQ, Group 2 had a significantly higher mean value than Groups 1 and 3 (Group 2 vs 1: $f = -6.635$, $p = 5.341e-11$; Group 2 vs 3: $f = 6.320$, $p = 5.127e-10$; Group 1 vs 3: $f = 1.081$, $p = 0.280$). IQ: intelligence quotient.

Fig 5. OCD-related scores and schizophrenia-related scores for each group.

Group 3 had significantly lower mean values than Groups 1 and 2 for OCIR_WA, OCIR_ST, OCIR_OR, OCIR_CH and OCIR_NE (OCIR_WA: Group 3 vs. 1, $f=10.779$, $p=1.236e-25$; Group 3 vs. 2, $f=6.416$, $p=2.469e-10$; OCIR_ST: Group 3 vs. 1, $f=11.370$, $p=3.8949e-28$; Group 3 vs. 2, $f=9.154$, $p=4.655e-19$; OCIR_OR: Group 3 vs. 1, $f=14.759$, $p=1.618e-44$; Group 3 vs. 2, $f=12.428$, $p=1.778e-32$; OCIR_CH: Group 3 vs. 1, $f=12.608$, $p=8.377e-34$; Group 3 vs. 2, $f=8.830$, $p=7.066e-18$; and OCIR_NE: Group 3 vs. 1, $f=13.690$, $p=4.514e-39$; Group 3 vs. 2, $f=11.095$, $p=1.222e-26$). For OCIR_OB, Group 1 had significantly higher mean values than Groups 2 and 3 (Group 1 vs. 2, $f=9.019$, $p=1.023e-18$; Group 1 vs. 3, $f=22.454$, $p=1.4139e-89$) OCIR_WA: wash, OCIR_OB: obsess, OCIR_ST: store, OCIR_OR: order, OCIR_CH: confirm, and OCIR_NE: number. Group 1 had significantly higher mean values than Groups 2 and 3 for all SPQ items (SPQ_C: Group 1 vs. 2, $f=14.080$, $p=4.438e-41$; Group 1 vs. 3, $f=20.578$, $p=1.411e-77$; SPQ_I: Group 1 vs. 2, $f=14.636$, $p=2.858e-43$; Group 1 vs. 3, $f=16.457$, $p=3.614e-50$; and SPQ_D: Group 1 vs. 2, $f=11.455$, $p=2.246e-28$; Group 1 vs. 3, $f=19.712$, $p=5.288e-71$). SPQ_C: cognitive and perceptual, SPQ_I: interpersonal, and SPQ_D: demolition.

Fig 6. Behavioral inhibition system (tendency to avoid punishment) and behavioral

activation system (tendency to approach reward) for each group. For BIS, Group 3

had a significantly lower mean value than Groups 1 and 2 (Group 3 vs. 1, $f=19.186$,

$p=8.767e-67$; Group 3 vs. 2, $f=14.641$, $p=8.975e-43$). For BAS_D, Group 2 had a

significantly higher mean value than Groups 1 and 3 (Group 2 vs. 1, $f=-6.993$,

$p=5.081e-12$; Group 2 vs. 3, $f=10.747$, $p=3.242e-25$). For BAS_R and BAS_S, Group

3 had a significantly lower mean than Groups 1 and 2 (BAS_R: Group 3 vs. 1,

$f=8.288$, $p=4.331e-16$; Group 3 vs. 2, $f=13.109$, $p=1.500e-35$; BAS_S: Group 3 vs. 1,

$f=5.713$, $p=1.511e-08$; Group 3 vs. 2, $f=8.338$, $p=3.369e-16$). BIS: behavioral

inhibitory system, BAS_D: behavioral activating system_driven, BAS_R: behavioral

activating system_reward responsive, and BAS_S: behavioral activating

system_stimulus seeking.

Fig 7. Interpersonal reactivity index for each group.

For IRI_F and IRI_PD, Group 2 had significantly higher mean values than Groups 1

and 3 (IRI_F: Group 2 vs. 1, $f=-7.350$, $p=4.203e-13$; Group 2 vs. 3, $f=12.852$, $p=3.444e-$

34 ; IRI_PD: Group 2 vs. 1, $f=-9.939$, $p=3.526e-22$; Group 2 vs. 3, $f=12.625$, $p=2.737e-$

33). For IRI_PT and IRI_EC, Group 3 had significantly lower mean values than Groups

1 and 2 (IRI_PT: Group 3 vs. 1, $f=11.649$, $p=4.029e-29$; Group 3 vs. 2, $f=12.712$,
 $p=1.069e-33$; IRI_EC: Group 3 vs. 1, $f=12.127$, $p=3.433e-31$; Group 3 vs. 2, $f=12.791$,
 $p=6.212e-34$). IRI_F: Imagination, IRI_PT: Perspective Taking, IRI_EC: Empathic
 Concern, and IRI_PD: Personal Distress.

229

Fig 2 shows the distribution of AQ scores for each group. Group 1, Group 2
 and Group 3 have higher AQ_S, AQ_A, AQ_I, and AQ_C compared to the general
 population and overall have high autistic tendencies. Group 3 is characterized by high
 AQ_I.

Fig 3 shows emotion-related items. BDI and SDS [26] measure depressive
 tendencies, STAI_S measures anxiety as a transient mood by asking how one feels
 about oneself at the time of the measurement, and STAI_T measures one's susceptibility
 to anxiety by asking how one usually feels about oneself [27]. Group 1 had higher
 depressive tendency and anxiety than the other groups and the general population,
 suggesting that members of this group tended to be mentally unstable. In Group 3, both
 depression and anxiety were much lower than in Group 1, and they tended to be
 mentally calm. Group 2 was similar to Group 3, but STAI_T was higher than in Group
 3. In addition, Group 1 had the lowest self-esteem and the lowest happiness among the

three groups. Fig 3 also shows the distribution of BAQ [24] scores, an index of aggression. Group 1 is characterized by high scores on BAQ_P, BAQ_A, and BAQ_H. BAQ_P is a scale measuring physical aggression reactions, with items measuring the tendency to violent reactions, impulses to violence, and justification of violence. BAQ_A is a scale measuring anger arousal, with items measuring anger and low anger inhibition. BAQ_H is a scale measuring suspicion and distrust, including malice and disregard for others, with items measuring negative beliefs and attitudes toward others. BAQ_V is a scale that measures verbal aggression reactions and consists of items that measure assertiveness and argumentativeness [25]. Therefore, Group 1 is highly suspicious and distrustful, short-tempered, and has little resistance to violence. Group 2 is characterized by high scores on BAQ_A and BAQ_H. Like Group 1, this group is short-tempered and paranoid. By contrast, Group 3's BAQ scores were comparable to the general population.

Fig 4 displays the results for the Big5 and IQ. Big5_E, Big5_A, Big5_C, Big5_N, and Big5_O measure extraversion, agreeableness (concerning compassion and kindness), conscientiousness (concerning perseverance and thoroughness), neuroticism (concerning meticulousness and emotional instability) and openness (concerning the ability to take in a wide range of experiences and make decisions), respectively, and IQ

measure reasoning ability. Group 1 is characterized by a higher Big5_N than the other groups, indicating that Group 1 is less emotionally stable. Group 2 is characterized by higher levels of Big5_A, Big5_C, and Big5_O than the other two groups, meaning that Group 2 is as kind and perseverant as the general population. In addition, Group 2 had a slightly higher average IQ. Group 3, like the other two groups, is low in extraversion and shows the general tendency of people with high autistic scores, but it is also characterized by the lowest Big5_N among the high AQ groups and is therefore considered to be the most emotionally stable among the three groups.

Fig 5 shows OCD-related and schizophrenia-related scores. For the OCIR, which measures the frequency of OCD symptoms, Group 1 scored higher than the other groups on all items. SPQ measures the characteristics of schizotypal personality and consists of nine subtypes of schizophrenia: SPQ_C, SPQ_I, and SPQ_D are indices for relational ideation, magical thinking, abnormal perception, and suspicion; social anxiety, absence of friends, emotional suppression, and suspicion; and odd behavior and odd speech, respectively. Example questionnaires for each item were "I have to be careful because people may resent me or have bad intentions toward me, or my friends may actually be dishonest," "I would rather be alone than interact with others, and I am not good at socializing," and "I am not good at speaking expressively or expressing my

true feelings" [28]. The questions in the survey overlap with those in BAQ_H for suspicion and AQ_S for social anxiety and absence of close friends. All SPQ scores were predominantly higher for Group 1 than the two groups, but the SPQ_I scores were higher than in the general population not only in Group 1 but also Group 2 and Group 3, suggesting that high AQ people have difficulty with interpersonal relationships. In addition, all groups scored high on AQ_S and AQ_C. Group 3 had the lowest scores on all items.

Fig 6 shows the results for BIS and BAS. BIS concerns the avoidance of conditioned aversive stimuli, and BAS activates behavior in response to incentives. BAS has three subscales, BAS_D, BAS_R, and BAS_S, representing a persistent pursuit of goals (e.g., "I will do anything to get what I need"), positive responses to rewards (e.g., "I get excited and energized when I get what I want"), and desire for new rewards (e.g., "I'm eager to get excitement and new sensations"), respectively [29]. Group 2 had a higher BAS_D score than the other two groups. According to McCrae & Costa [30], neuroticism is a personality trait that reflects the ease of experiencing negative emotions, while extraversion is a vivacious personality trait such as being socially active and seeking excitement and stimulation. Takahashi et al. [31] found a positive correlation between BIS and neuroticism and a positive correlation between

BAS and extraversion. In the present study, Group 1 had a higher BIS and higher neuroticism tendency (high Big5_N, i.e. low emotional stability), but there was no difference in the distribution of Big5_E scores between the three groups despite the differences in the distribution of BAS scores. Group 2 showed a similar level of BIS to Group 1. Group 3 had the same mean and peak score as the average of all subjects for all items.

Fig 7 shows the results for the IRI, which measures empathy. IRI_EC, IRI_PT, IRI_PD, and IRI_F represent "the ease with which other-oriented emotions such as sympathy are aroused," "the degree to which one considers the feelings of others from their perspective," "the degree to which one is preoccupied with anxiety or fear generated in oneself by observing the distress of others," and "the tendency to imagine oneself as a character in a fictional story," respectively [32]. For IRI_PT and IRI_EC, Group 1 and 2 scored higher than the general population, and for IRI_F, IRI_PD, Group 2 scored significantly higher than the other two groups. Group 3 showed scores consistent of the general population for all items of IRI.

Discussion

The AQ is a valuable tool for quickly quantifying a particular individual on the

315 ASD continuum. However, there has not been sufficient consideration into different
 316 subgroups in the population with high scores. In this study, using a large set of
 317 personality traits and attributes other than happiness and the Big5, we conducted a
 318 clustering analysis of a large population with high AQ scores not limited to clinical
 319 patients. As a result, we identified three subgroups.

320 Group 1 has high AQ_S, AQ_A, and AQ_C. People in this group tend to be
 321 obsessive about one thing, unsociable and not good at communication. Many are
 322 paranoid and distrustful, short-tempered, and have low resistance to violence.

323 Depressive and anxiety tendencies are also high, and happiness and self-esteem are
 324 lower than those of the overall general population. They also have a tendency toward
 325 OCD and schizophrenia: they are highly afraid of failure. Characteristics of Group 1
 326 such as low self-esteem [33] and high hostility [34] along with high SPQ scores [35] are
 327 reminiscent of BPD. BPD is estimated to be present in about 1-2% of the general
 328 population and more common in females than in males. BPD is often associated with
 329 impulsivity, depression, anxiety disorders, paranoid personality disorder, and
 330 difficulties in interpersonal relationships [36]. The DSM-IV criterion for BPD is to
 331 satisfy five out of nine items, including inappropriately intense anger or difficulty at
 332 controlling anger, chronic feelings of emptiness, and self-injurious behavior (which was

difficult to confirm in the present study). It is also reported that BPD is characterized by unstable personality traits [37], suggesting that a longitudinal study may be necessary.

Group 2 has high AQ_S and AQ_D, is unsociable, and sensitive to details and anxiety is slightly higher than the overall average. This group is eager to try what they want but afraid of failure. The unique feature of this group is that many of them score high on BIS, IRI and the Big5 (particularly for agreeableness and openness).

Group 3, like the other two groups, has higher AQ_S, SQ_A, AQ_C, and AQ_I scores than the general population, but its AQ_A and AQ_D scores are lower and AQ_I score higher than the other two groups. Overall, most of the scores in this group are comparable with the general population, but among the three groups, Group 3 has the lowest Big5_N, suggesting that people in this group are emotionally stable. The scores of emotionally related items, such as depression and anxiety, are also low. Group 3 has high interpersonal factors of schizophrenia related to social interactions and AQ in general, but its members are emotionally stable and resemble typical Asperger's syndrome.

Schwartzman et al. [13] conducted a clustering analysis of people with high ASD scores measured by the RAADS-R based on the Big5 and their subdivisions. They identified four clusters. Cluster 1 and Cluster 2 had Big5 traits patterns typical of social

phobia [11] and secondary psychopaths and BPD [12], respectively. Cluster 3 had low agreeableness, extraversion, and average levels of neuroticism and conscientiousness but high well-being, and Cluster 4 had the highest extraversion and agreeableness and high well-being.

Group 1 in the present study has high depressive tendencies and anxiety and low happiness. It also had high scores for OCD, schizophrenia, impulsivity, and other strong characteristics of BPD, but not for secondary psychopathy. These data suggest that Group 1 in the present study and Cluster 2 in Schwartzman et al. [13] generally correspond to each other, implying a deeper association with BPD. On the other hand, Group 2 in the present study has high BIS and IRI. High BIS suggests features of depression and social phobia [38,39], which are closely related to Cluster 1. In addition, social phobia is characterized by high IRI [40-42], while strong connection with IRI has not been reported for depression. Also considering that BDI for Group 2 was not high, we think that Group 2 is more related to social phobia than depression. The present study utilized a large set of personality traits and attributes beyond the Big5, including BIS, which enabled us to conduct a detailed analysis of the AQ based on multiple indices of personality traits and attributes.

By contrast, none of the clusters in Schwartzman et al. [13] matched Group 3,

369 which represents a typical autistic person with a high AQ with other personality scores
370 comparable to the general population. A potential reason for the gap is that only the
371 Big5 and a limited number of indices, such as happiness and life satisfaction, were
372 considered by Schwartzman et al. [13]. In addition, this previous study collected
373 subjects through a website focusing on autism, which may also account for the
374 difference. Related to this, the fact that the gender ratio in the high AQ group of the
375 present study did not match the general 4:1 ratio of males to females for autism may
376 arise from the gender bias in Internet users.

377 It is possible that the characteristics of personality disorders defined in the
378 DSM5 (i.e., Cluster A-C) provide useful insights into our clustering results. Group 1,
379 which has strong characteristics of BPD, is like Cluster B, which includes BPD,
380 Narcissistic Personality Disorder, Antisocial Personality Disorder, and Acting
381 Personality Disorder, and is characterized by acting, emotional, and volatile
382 characteristics. Among these disorders, people with BPD are considered to have
383 unstable emotions and interpersonal relationships and difficulty controlling impulses.
384 Although we showed high OCD and SPQ scores for Group 1, more study is needed for
385 impulsivity in Group 1. Group 2, which shows characteristics of high suspicion and
386 high anxiety, is like Cluster C, which has anxious and introverted characteristics.

387 Cluster C includes Dependent, Obsessive Compulsive, and Avoidant Personality
388 Disorders. Group 2 also has similar characteristics for avoidant personality disorder,
389 which is characterized by an extreme fear of failure and of being rejected by others.
390 Finally, Group 3, which has high autistic tendencies but average-level scores for traits
391 other than interpersonal relationships, mostly fits into Cluster A. This category includes
392 personality disorders such as paranoid (delusional) personality disorder, schizoid
393 personality disorder, and schizotypal personality disorder. Among these, Group 3 was
394 closest to schizoid personality disorder, which is characterized by a lack of interest in
395 others, a preference for being alone, and a lack of concern for the evaluation of oneself
396 by those nearby.

397 There are several limitations in the present study. First, although inattentive
398 and hyperactive behaviors are common in children with ASD, children with ADHD also
399 show similar social difficulties with their peers [43]. Before the development of the
400 DSM-5, it was not possible for a person with a diagnosis of ASD to be simultaneously
401 diagnosed with ADHD. However, studies after DSM-5 have shown that ADHD is the
402 most common comorbidity among children with ASD, with a probability of 40%-70%.
403 In addition, ADHD and ASD have many copy number variants (CNV) and
404 chromosomal abnormalities in common, indicating genetic overlap between them [44].

Therefore, it is necessary to include ADHD measures in large-scale studies of ASD in the future.

Second, although our results revealed heterogeneity in the high AQ samples, this does not necessarily mean that people with ASD comprise three subgroups. It is possible that AQ cannot separate autism from other psychiatric disorders. Even so, we believe our results will contribute to the better understanding of AQ.

Third, although we confirmed that the number of clusters was three by using two different metrics for clustering, the cluster size may differ depending on the methods and data, as discussed in a previous study on personality types based on large-scale data [16], which reported that a simple application of clustering yields a spurious number of personality types. Therefore, we took a minimalist approach to increase the cluster size gradually. That is, when we first employed the K-means clustering method instead of the Ward method, we found two clusters: one with high scores for mental illness and the other with low scores. This result is consistent with a previous clustering study [13] of high autistic tendency groups based on the Big5, which reported one group with characteristics like mental disorders and the other with only high autistic tendencies. Since we were mainly interested in the structures in the high-score group, we decided to adopt the Ward method in the present study.

Fourth, the personality test data of this study was collected from adult Japanese speakers between the ages of 19 and 89, and all participants satisfied the condition to have cognitive ability to complete the surveys through internet access. Different clusters may emerge if recruiting non-Japanese or children-only participants.

In summary, this study conducted a clustering analysis of a large number of high AQ subjects based on a large set of personality traits and attributes and identified three subgroups: Group 1, which resembles borderline personality disorder; Group 2, which resembles social phobia; and Group 3, which has high AQ scores but other personality scores that resemble the general population. These findings lead to several important questions for future study. The first is to address whether the three subgroups are also seen in the clinical population of ASD and how they show differences in real social behaviors. A previous study based on the Big5 scores from 64 Asperger's syndrome patients reported larger variances in the patients than in normal controls, potentially indicating the existence of subgroups [45]. The second is to address how AQ scores and other personality measures are distinct and overlapping [10]. We believe these new avenues based on a data-driven approach like ours will help clarify AQ and ASD.

Materials and Methods

Participants

Subjects older than 18 years old were recruited through an online survey over a four-year period from 2016 to 2019. A total of 18926 subjects (10416 males and 8510 females) whose ages ranged from 18~89 years old were collected for the analysis, excluding duplicate subjects who took the test multiple years. The high AQ group consisted of 1364 subjects (819 males and 545 females) whose ages ranged from 19 and 83 years old. The mean age was 39.0 years old, with a standard deviation of 14.7 years. Because all personality questionnaires were written in formal Japanese, proficiency in the Japanese language was required to complete the survey. Therefore, all participants were likely to be Japanese, although some may have been foreigners fluent in the language. The online survey and analysis methods were reviewed and approved by the Ethics Committee of National Institute of Information and Communications Technology. The methods were in accordance with the code of ethics and conduct of the Japanese Psychological Association. Subjects were briefed about the experiment, and informed consent was obtained from all. The research questions and analyses were not preregistered.

Online survey

Data collection was conducted through an online survey in Japanese as follows.

A research company recruited the subjects and issued a unique URL to each of them.

Subjects accessed the personality trait questionnaires on the server at our institute

through the received URL. At the end of the test, we sent a "linkage ID" of the subject

with the completion status of the questionnaire to the research company. Based on this

ID, the research company gave the subjects reward points (equivalent to 300 yen).

The contents and abbreviations of the personality trait questionnaires are

explained in Table S1. Specifically, the mental health scores included schizophrenia

[SPQ_C, SPQ_I, SPQ_D], delusion [PDI_DE, PDI_DI, PDI_FR, PDI_CO],

psychopathy [PSPS_P, PSPS_S], OCD [OCIR_WA, OCIR_OB, OCIR_ST, OCIR_CH

OR, OCIR_CH, OCIR_CH], depression [BDI, SDS], anxiety [STAI_S, STAI_T], and

stress [PSS]. (The abbreviations in square brackets indicate subscales.) Behavioral

economics scores included socioeconomic measures [SES] and social value orientation

[SVO_P, SVO_I, SVO_C]. Money-related risk aversion and time discounting [RA,

TIM] were also examined. Empathy-systematization scores included scales for empathy

[IRI_F, IRI_PT, IRI_EC, IRI_PD] and ASD [AQ_S, AQ_D, AQ_A, AQ_C, AQ_I]. The

inhibition/activation score included scales for the Behavioral Inhibition System (BIS)

and the Behavioral Activation System (BAS) [BAS_D, BAS_R, BAS_S]. All

questionnaires were self-reported as described in S1 Table.

The Autism-Spectrum Quotient (AQ)

We used a Japanese version of the AQ [46], which comprises 10 items for each of five major domains (social skills, attention switching, attention to detail, communication, and imagination). The AQ uses a forced-choice self-report format. Answers are rated on a binary scale, and the maximum score is 50 points; a higher score indicates stronger autistic tendency. Because the cutoff point between people with AS/HFA and the general Japanese population was previously identified to be 32 points [46], AQ scores of 33 or higher were used to define the high AQ group for clustering.

Analysis

Lasso regression

Initially, to determine which personality traits relate to the AQ, we ran a Lasso regression analysis of scikit-learn in Python [47] to predict individual AQ scores from a total of 56 personality traits (sub-) scores (excluding the AQ) and attributes. In the Lasso regression analysis, we used the total AQ score to characterize the high AQ group

beyond the Japanese AQ cutoff value (32). In the subsequent analysis to characterize each high AQ subgroup, we examined subscales rather than total scores to examine differences in subscales among subgroups. Data including a missing value was excluded from the analysis.

Clustering

We clustered the high AQ group of 1364 people (7.2% of total respondents) using the Ward method (using `hclust` in R) with two different metrics: the Euclidean distance and the Manhattan distance. We used 35 personality traits whose Lasso coefficient was larger than 1/20 of the largest absolute value of weight in the Lasso regression analysis. The optimal number of clusters was determined to be 3 by the NbClust method [48] implemented on R for both the Euclidean and the Manhattan distances. The `cutree` function in R was used to create a tree diagram. We also tested the K-means algorithm for clustering.

Score distributions for each group

We drew a kernel distribution estimate plot and examined the distribution of all personality trait scores for each group using `kdeplot` of `seaborn` [49] in Python.

Acknowledgements

We would like to thank Satoshi Tada and Dr. Tomoki Haji for technical assistance, and Peter Karagiannis for editing an early version of the manuscript.

References

1. Lord C, Elsabbagh M, Baird G, Veenstra-Vanderweele J. Autism spectrum disorder. *Lancet* (London, England). 2018;392(10146): 508–520.
2. Wing L. Asperger's syndrome: A clinical account. *Psychological Medicine*.1981;11(1): 115-129.
3. Wing L. The Continuum of Autistic Characteristics. In: Schopler E, Mesibov GB, editors. *Diagnosis and Assessment in Autism. Current Issues in Autism*. Boston, MA: Springer; 1998. pp. 91-110.
4. Frith U, Mira M. Autism and Asperger syndrome. *Focus on Autistic Behavior*. 1992;7(3): 13-15.
5. Baron-Cohen S, Wheelwright S, Skinner R, Martin J, Clubley E. The autism-spectrum quotient (AQ): evidence from Asperger syndrome/high-functioning autism, males and females, scientists and mathematicians. *Journal of autism and developmental disorders*. 2001;31(1): 5–17.
6. Austin E. Personality correlates of the broader autism phenotype as assessed by the

- 531 Autism Spectrum Quotient (AQ). Personality and Individual Differences.
532 2005;38(2): 451-460.
- 533 7. Wakabayashi A, Baron-Cohen S, Wheelwright S. Are autistic traits an independent
534 personality dimension? A study of the Autism-Spectrum Quotient (AQ) and the
535 NEO-PI-R. Personality and Individual Differences. 2006;41(5): 873–883.
- 536 8. Dinsdale NL, Hurd PL, Wakabayashi A, Elliot M, Crespi BJ. How are autism and
537 schizotypy related? Evidence from a non-clinical population. PloS one. 2013;8(5):
538 e63316.
- 539 9. Dudas RB, Lovejoy C, Cassidy S, Allison C, Smith P, Baron-Cohen S. The overlap
540 between autistic spectrum conditions and borderline personality disorder. PloS one.
541 2017;12(9): e0184447.
- 542 10. Lodi-Smith J, Rodgers JD, Cunningham SA, Lopata C, Thomeer ML. Meta-analysis
543 of Big Five personality traits in autism spectrum disorder. Autism. 2019
544 Apr;23(3):556-565.
- 545 11. Rosellini AJ, Brown TA. The NEO Five-Factor Inventory: latent structure and
546 relationships with dimensions of anxiety and depressive disorders in a large clinical
547 sample. Assessment. 2011;18(1): 27–38.
- 548 12. Strunz S, Westphal L, Ritter K, Heuser I, Dziobek I, Roepke S. Personality

- 549 Pathology of Adults With Autism Spectrum Disorder Without Accompanying
550 Intellectual Impairment in Comparison to Adults With Personality Disorders.
551 Journal of autism and developmental disorders. 2015;45(12): 4026–4038.
- 552 13. Schwartzman BC, Wood JJ, Kapp SK. Can the Five Factor Model of Personality
553 Account for the Variability of Autism Symptom Expression? Multivariate
554 Approaches to Behavioral Phenotyping in Adult Autism Spectrum Disorder. Journal
555 of autism and developmental disorders. 2016;46(1): 253–272.
- 556 14. Hu VW, Steinberg ME. Novel clustering of items from the Autism Diagnostic
557 Interview-Revised to define phenotypes within autism spectrum disorders. Autism
558 Res. 2009;2(2): 67-77.
- 559 15. Wakabayashi A, Baron-Cohen S, Ashwin C. Do the traits of autism-spectrum
560 overlap with those of schizophrenia or obsessive-compulsive disorder in the general
561 population? Research in Autism Spectrum Disorders. 2012;6(2): 717-725.
- 562 16. Gerlach M, Farb B, Revelle W, Nunes Amaral LA. A robust data-driven approach
563 identifies four personality types across four large data sets. Nat Hum Behav. 2018;2:
564 735–742.
- 565 17. Foa EB, Huppert JD, Leiberg S, Langner R, Kichic R, Hajcak G, et al. The
566 Obsessive-Compulsive Inventory: development and validation of a short version.

- 567 Psychological assessment. 2002;14(4): 485–496.
- 568 18. Beck AT, Ward CH, Mendelson M, Mock J, Erbaugh J. An inventory for measuring
- 569 depression. Archives of general psychiatry.1961;4: 561–571.
- 570 19. Raine A. The SPQ: a scale for the assessment of schizotypal personality based on
- 571 DSM-III-R criteria. Schizophrenia bulletin. 1991;17(4): 555-564.
- 572 20. Carver CS, White TL. Behavioral inhibition, behavioral activation, and affective
- 573 responses to impending reward and punishment: The BIS/BAS Scales. Journal of
- 574 Personality and Social Psychology. 1994;67(2): 319–333.
- 575 21. Davis MH. Measuring individual differences in empathy: Evidence for a
- 576 multidimensional approach. Journal of Personality and Social Psychology.
- 577 1983;44(1): 113–126.
- 578 22. Spielberger CD. State-Trait Anxiety Inventory: a comprehensive bibliography; 2nd
- 579 Edition. Palo Alto: Consulting Psychologists Press; 1989.
- 580 23. Goldberg LR. The structure of phenotypic personality traits. American Psychologist.
- 581 1993;48(1): 26–34.
- 582 24. Buss AH, Perry M. The Aggression Questionnaire. Journal of Personality and Social
- 583 Psychology. 1992;63(3): 452–459.
- 584 25. Ando A, Soga S, Yamasaki K, Shimai S, Shimada H, Utsuki N., et al. Development

- 585 of the Japanese version of the Buss-Perry Aggression Questionnaire (BAQ).
- 586 Shinrigaku Kenkyu. 1999;70(5): 384-392.
- 587 26. Zung WWA. SELF-RATING DEPRESSION SCALE. Archives of general
588 psychiatry. 1965;12: 63–70.
- 589 27. Iwamoto M, Dodo H, Yoneda J, Ishii F, Goto H, Ueda Y, et al. A study of the State-
590 Trait Anxiety Inventory (STAI) and its application to noise stress. Nippon Eiseigaku
591 Zasshi (Japanese Journal of Hygiene). 1989;43(6): 1116-1123.
- 592 28. Iijima Y, Sasaki J, Bando N, Asai T. Development of a Japanese Version of the
593 Schizotypal Personality Questionnaire and Factor Structure of Schizotypy. Japanese
594 Association of Behavioral and Cognitive Therapies. 2010;36-1: 29-41.
- 595 29. Berkman ET, Lieberman MD, Gable SL. BIS, BAS, and response conflict: Testing
596 predictions of the revised reinforcement sensitivity theory. Personality and
597 individual differences. 2009;46(5-6): 586–591.
- 598 30. McCrae RR, Costa PT. Personality in adulthood: A five-factor theory perspective
599 2nd edition. New York: Guilford Press; 2003.
- 600 31. Takahashi Y, Yamagata S, Kijima N, Shigemasu K, Ono Y, Ando J. Continuity and
601 change in behavioral inhibition and activation systems: A longitudinal behavioral
602 genetic study. Personality and Individual Differences. 2007;43(6): 1616-1625.

- 603 32. Davis MH. A Multidimensional Approach to Individual Differences in Empathy
604 JSAS Catalog of Selected Documents in Psychology. 1980;10(85).
- 605 33. Zeigler-Hill V, Abraham J. Borderline personality features: Instability of self-
606 esteem and affect. Journal of Social and Clinical Psychology. 2006;25(6): 668–687.
- 607 34. Wilson ST, Stanley B, Oquendo MA, Goldberg P, Zalsman G, Mann JJ. Comparing
608 impulsiveness, hostility, and depression in borderline personality disorder and
609 bipolar II disorder. J Clin Psychiatry. 2007;68(10):1533-1539.
- 610 35. Slotema CW, Bayrak H, Linszen MMJ, Deen M, Sommer IEC. Hallucinations in
611 patients with borderline personality disorder: characteristics, severity, and
612 relationship with schizotypy and loneliness. Acta Psychiatr Scand. 2019;139(5):
613 434-442.
- 614 36. Lieb K, Zanarini MC, Schmahl C, Linehan MM, Bohus M. Borderline personality
615 disorder. Lancet. 2004;364(9432): 453-461.
- 616 37. Hopwood CJ, Newman DA., Donnellan MB, Markowitz JC, Grilo CM, Sanislow
617 CA, et al. The stability of personality traits in individuals with borderline
618 personality disorder. Journal of Abnormal Psychology. 2009;118(4): 806–815.
- 619 38. Kasch KL, Rottenberg J, Arnow BA, Gotlib IH. Behavioral activation and inhibition
620 systems and the severity and course of depression. J Abnorm Psychol. 2002;111(4):

- 621 589-597.
- 622 39. Morgan BE, van Honk J, Hermans EJ, Scholten MR, Stein DJ, Kahn RS. Gray's
- 623 BIS/BAS dimensions in non-comorbid, non-medicated social anxiety disorder.
- 624 World J Biol Psychiatry. 2009;10: 925-928.
- 625 40. Pittelkow MM, Aan Het Rot M, Seidel LJ, Feyel N, Roest AM. Social Anxiety and
- 626 Empathy: A Systematic Review and Meta-analysis. Journal of Anxiety Disorders.
- 627 2021 Mar;78: 102357.
- 628 41. Cusi AM, Macqueen GM, Spreng RN, McKinnon MC. Altered empathic
- 629 responding in major depressive disorder: relation to symptom severity, illness
- 630 burden, and psychosocial outcome. Psychiatry Res. 2011;188(2): 231-236.
- 631 42. Wilbertz G, Brakemeier EL, Zobel I, Härter M, Schramm E. Exploring
- 632 preoperational features in chronic depression. J Affect Disord. 2010;124(3): 262-
- 633 269.
- 634 43. Jang J, Matson JL, Williams LW, Tureck K, Goldin RL, Cervantes PE. Rates of
- 635 comorbid symptoms in children with ASD, ADHD, and comorbid ASD and ADHD.
- 636 Research in Developmental Disabilities. 2013;34(8): 2369-2378.
- 637 44. Antshel KM, Zhang-James Y, Wagner KE, Ledesma A, Faraone SV. An update on
- 638 the comorbidity of ADHD and ASD: a focus on clinical management. Expert review

of neurotherapeutics. 2016;16(3): 279–293.

45. Kanai C, Iwanami A, Hashimoto R, Ota H, Tani M, Yamada T, et al. Clinical characterization of adults with Asperger's syndrome assessed by self-report questionnaires based on depression, anxiety, and personality. Research in Autism Spectrum Disorders. 2011;5(4): 1451-1458.
46. Wakabayashi A, Tojo Y, Baron-Cohen S, Wheelwright S. The Autism-Spectrum Quotient (AQ) Japanese version: evidence from high-functioning clinical group and normal adults. The Japanese Journal of Psychology. 2004;75(1):78-84.
47. Pedregosa F, Varoquaux G, Gramfort A, Michel V, Thirion B, Grisel O, et al. Scikit-learn: Machine Learning in Python. Journal of Machine Learning Research. 2011;12: 2825-2830.
48. Charrad M, Ghazzali N, Boiteau V, Niknafs A. NbClust: An R Package for Determining the Relevant Number of Clusters in a Data Set. Journal of Statistical Software. 2014;61(6): 1-36.
49. Waskom KL. seaborn: statistical data visualization. The Journal of Open Source Software. 2021;6(60): 3021.

Supporting information

657 **S1 Fig. Three clusters from the Manhattan distance.**

658 **S1 Table. The contents, abbreviations and references of the personality trait**

659 **questionnaires.**

660 **S2 Table. Oneway ANOVA result.**

661

662 **Data and code availability**

663 The data and code that support the findings of this study are available on

664 request to the corresponding author.

665

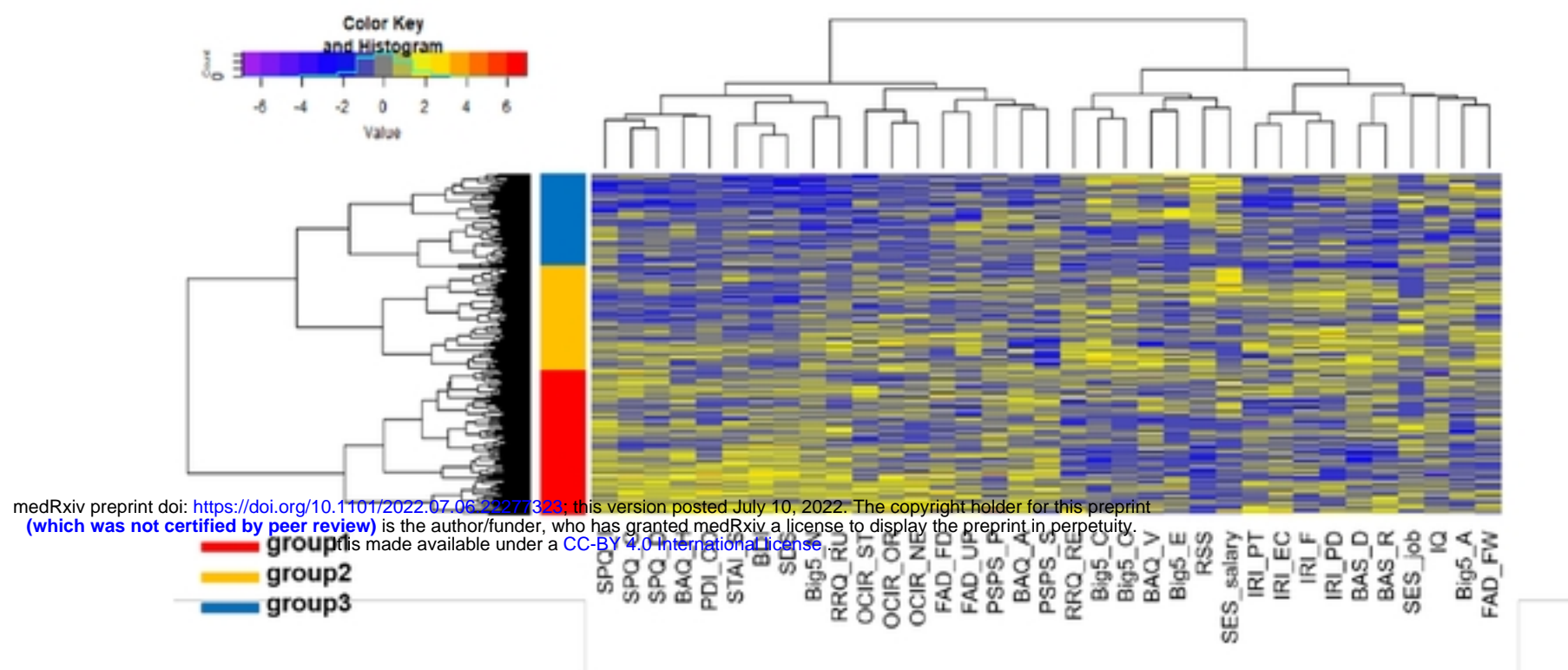


Figure 1 Three clusters in the high AQ group.

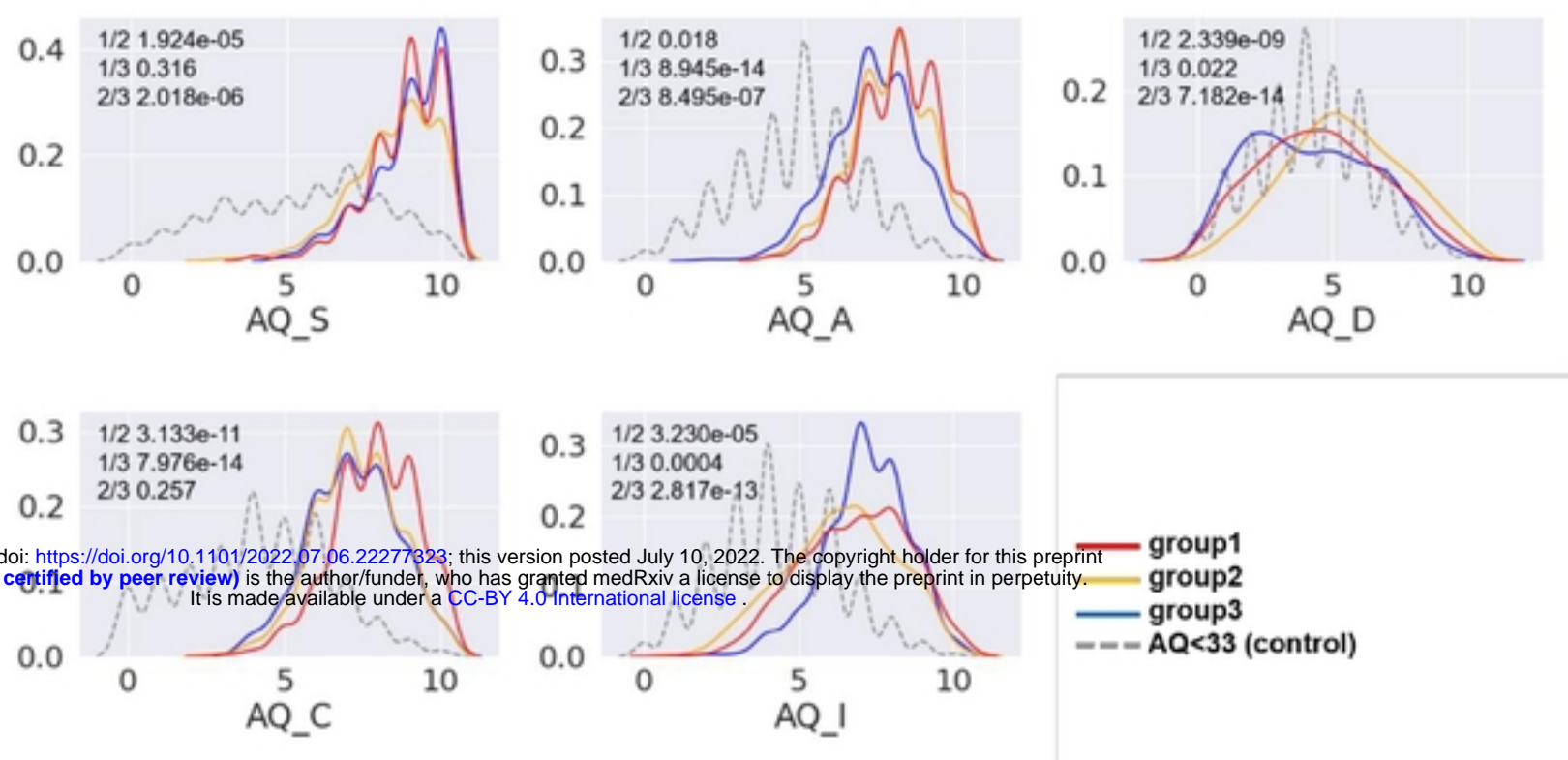


Figure 2 AQ scores for each group

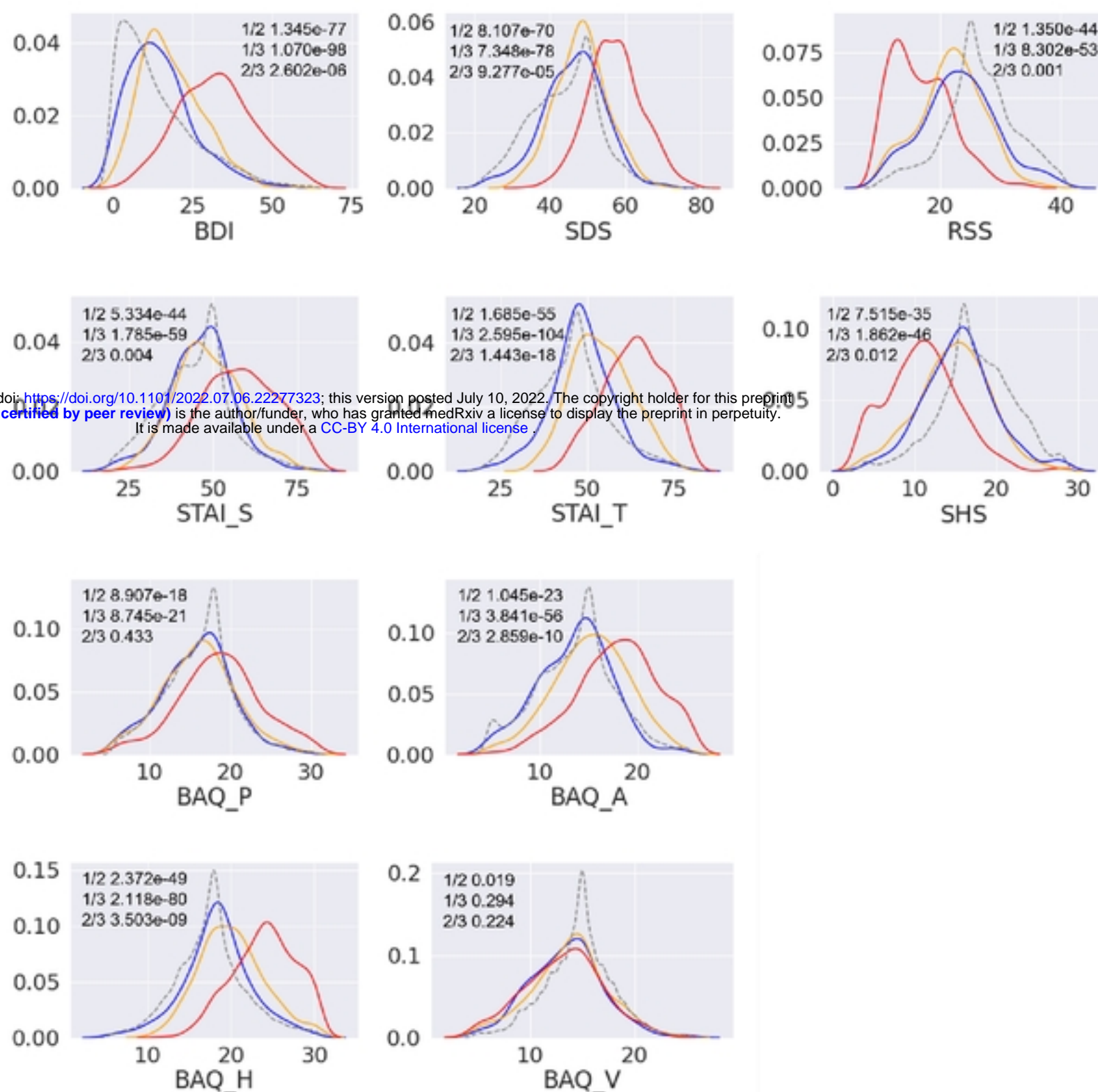


Figure 3 emotion-related items for each group

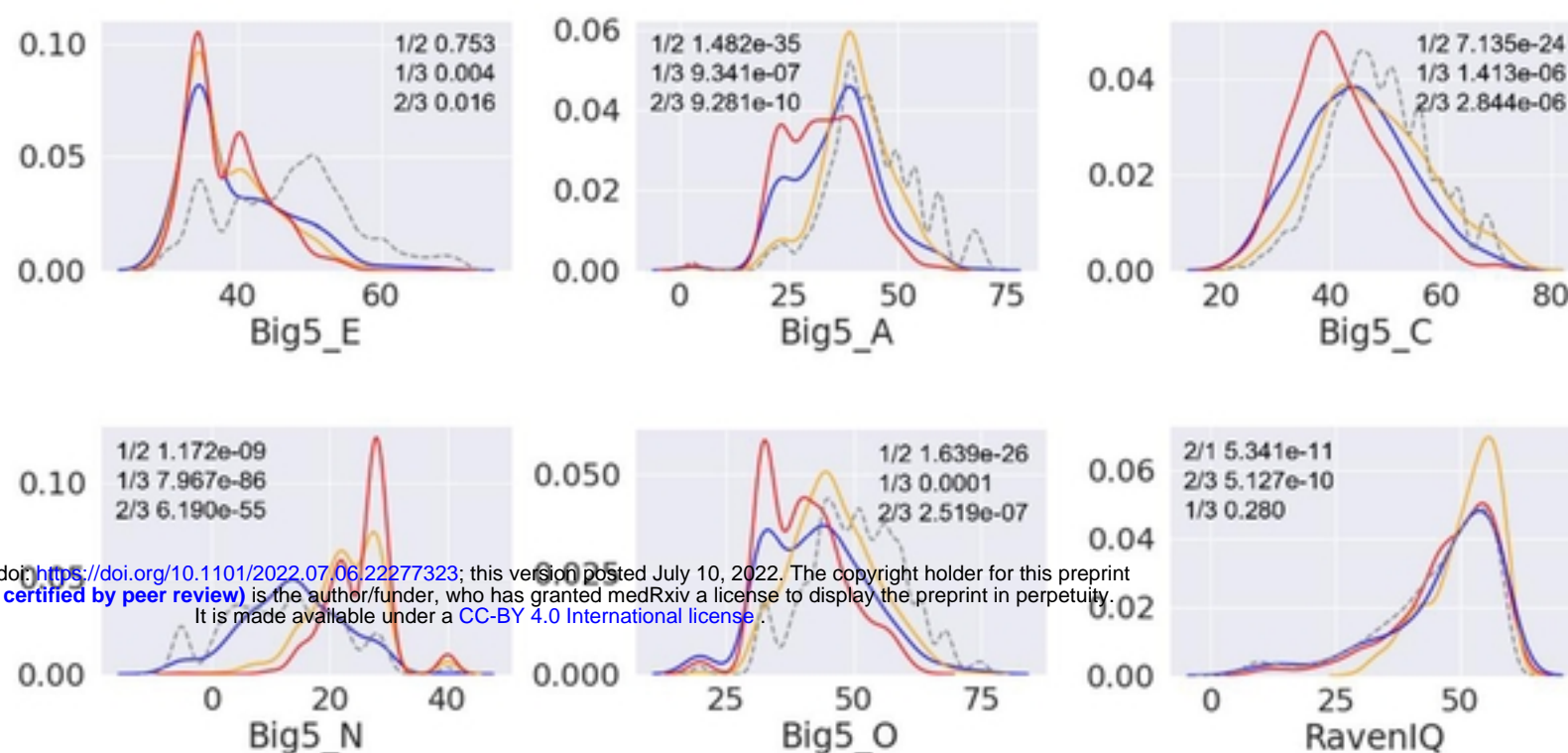


Figure 4 Big5 and IQ for each group

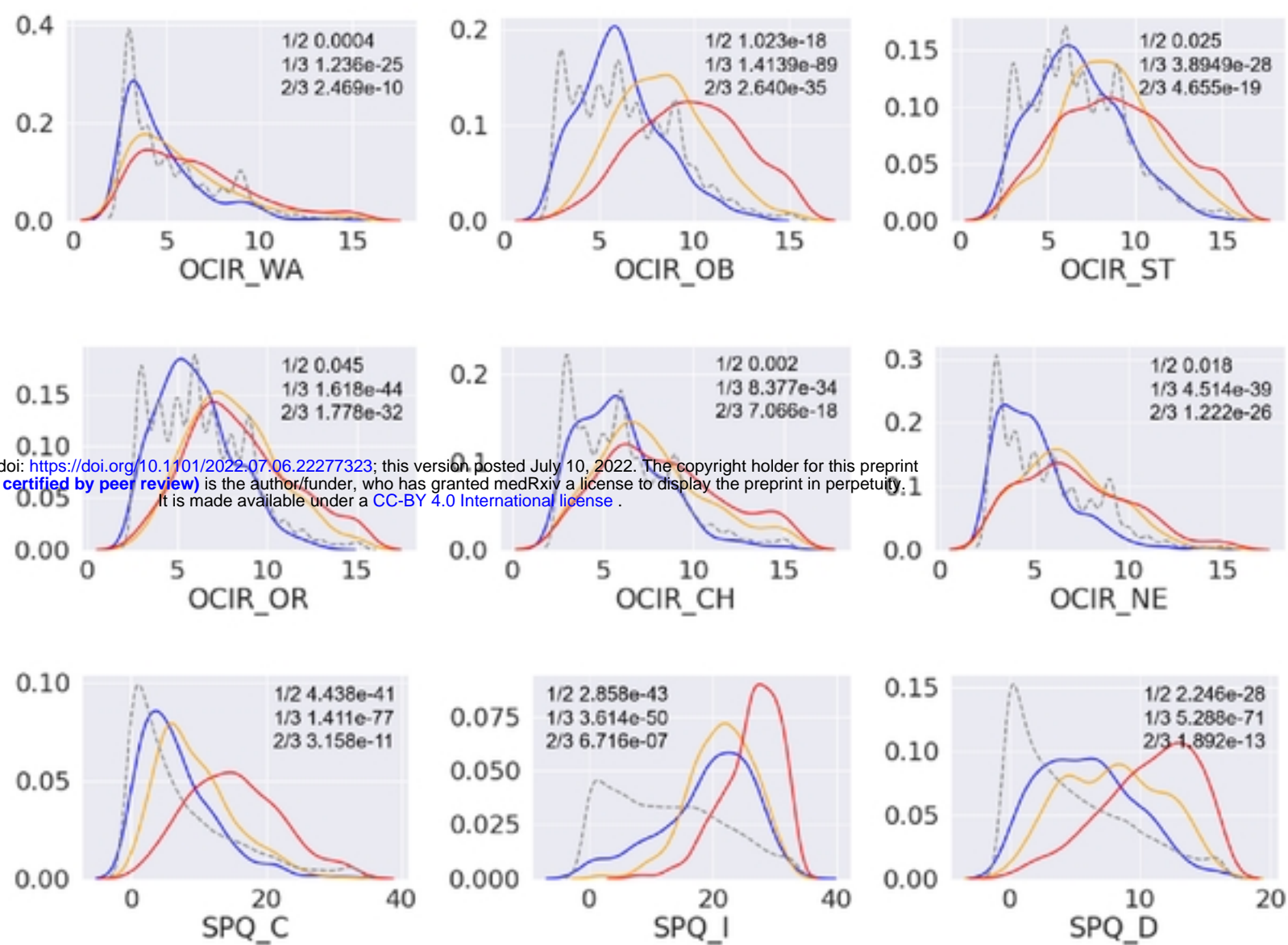


Figure 5 OCD-related scored and schizophrenia-related scores for each group

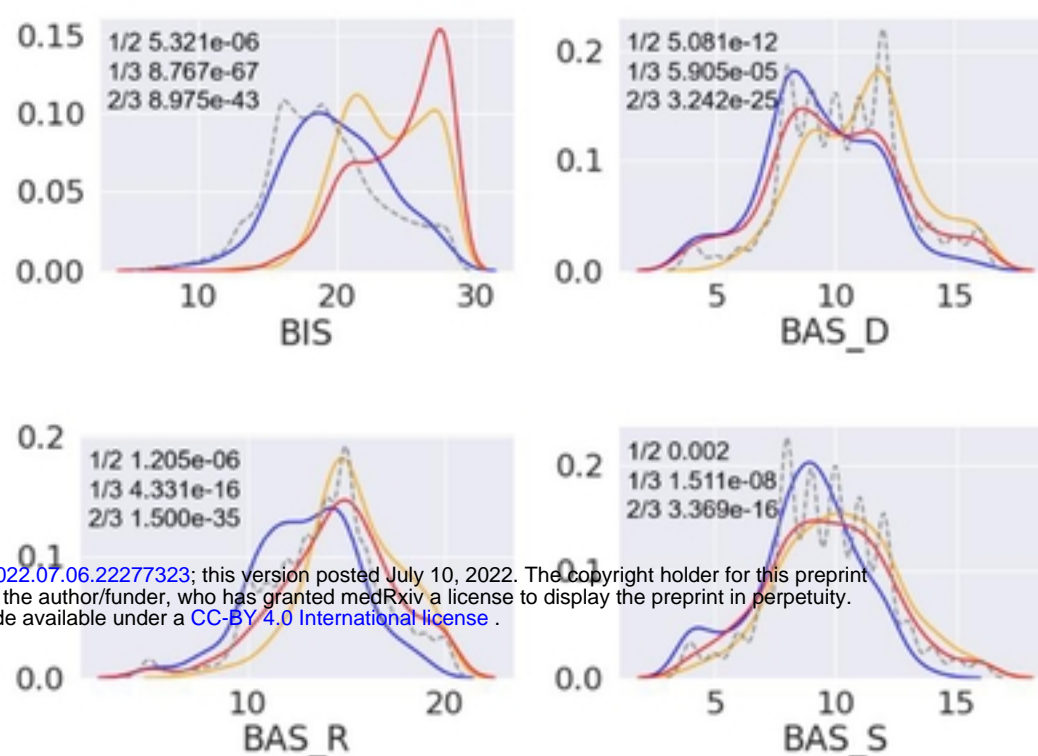


Figure 6 Behavioral inhibition system (tendency to avoid punishment) and behavioral activation system (tendency to approach reward) for each group

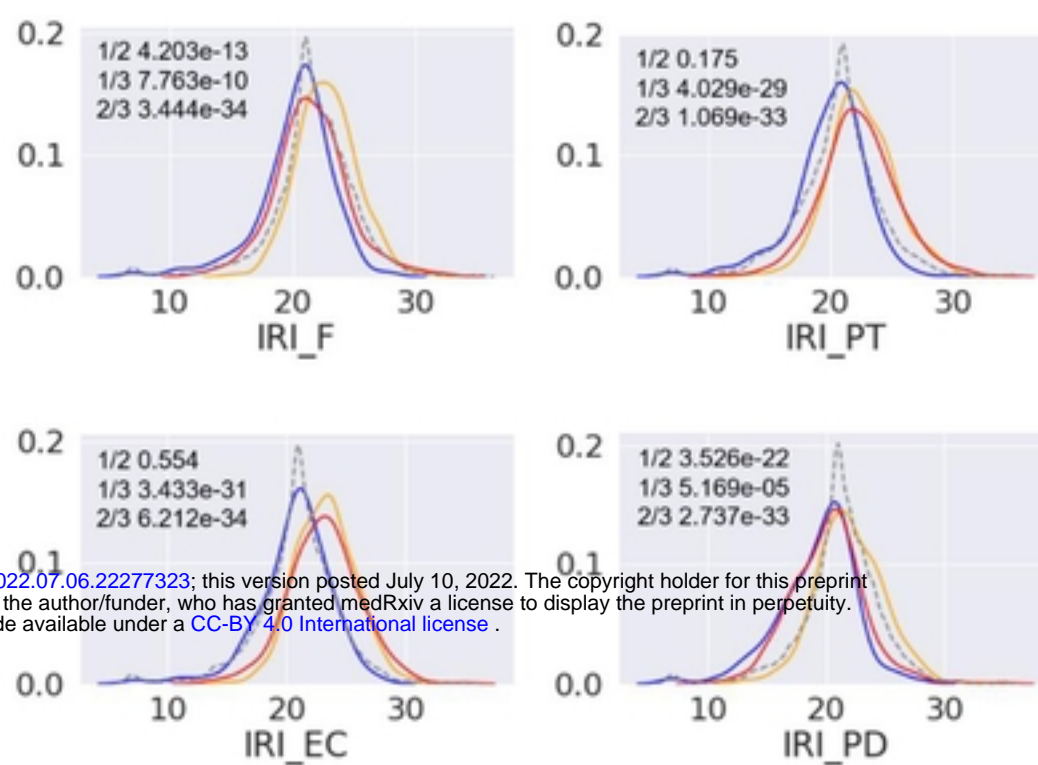


Figure 7 Interpersonal reactivity index for each group