

Pathway-based polygenic risk scores for schizophrenia and associations with clinical and neuroimaging phenotypes in UK Biobank

Miruna C. Barbu^{1*}, Gladi Thng¹, Mark J. Adams¹, Katie Marwick¹, Seth GN Grant², Andrew M. McIntosh¹, Stephen M. Lawrie^{1#}, Heather C. Whalley^{1#}

¹Division of Psychiatry, The University of Edinburgh, Royal Edinburgh Hospital, Edinburgh, UK

²Genes to Cognition Program, Centre for Clinical Brain Sciences, University of Edinburgh, Edinburgh EH16 4SB, UK

* = Corresponding author

E-Mail: mbarbu@ed.ac.uk

Address:

University of Edinburgh, Division of Psychiatry, Royal Edinburgh Hospital, Morningside Park

Edinburgh EH10 5HF

United Kingdom

Phone: +44 (0)131-537-6691

= Joint last author

Running title: Schizophrenia pathway PRS and clinical and neuroimaging phenotypes

Keywords: schizophrenia, pathway-based polygenic risk scores, synaptic processes, biological pathway, UK Biobank, neuroimaging

Abstract

Background: Schizophrenia is a heritable psychiatric disorder with a polygenic architecture. Genome-wide association studies (GWAS) have reported an increasing number of risk-associated variants and polygenic risk scores (PRS) now explain 17% of the variance in the disorder. There exists substantial heterogeneity in the effect of these variants and aggregating them based on biologically relevant functions may provide mechanistic insight into the disorder.

Methods: Using the largest schizophrenia GWAS to date, we calculated PRS based on 5 gene-sets previously found to contribute to the pathophysiology of schizophrenia: the postsynaptic density of excitatory synapses, postsynaptic membrane, dendritic spine, axon, and histone H3-K4 methylation gene-sets. We associated each PRS, along with respective whole-genome PRS (excluding single nucleotide polymorphisms in each gene-set), with neuroimaging ($N > 29,000$; cortical, subcortical, and white matter microstructure) and clinical ($N > 119,000$; psychotic-like experiences including conspiracies, communications, voices, visions, and distress) variables in healthy subjects in UK Biobank.

Results: A number of clinical and neuroimaging variables were significantly associated with the axon gene-set (psychotic-like communications: $\beta = 0.0916$, $p_{FDR} = 0.04$, parahippocampal gyrus volume: $\beta = 0.0156$, $p_{FDR} = 0.03$, FA thalamic radiations: $\beta = -0.014$, $p_{FDR} = 0.036$, FA posterior thalamic radiations: $\beta = -0.016$, $p_{FDR} = 0.048$), postsynaptic density gene-set (distress due to psychotic-like experiences: $\beta = 0.0588$, $p_{FDR} = 0.02$, global surface area: $\beta = -0.012$, $p_{FDR} = 0.034$, and cingulate lobe surface area: $\beta = -0.014$, $p_{FDR} = 0.04$), and histone gene-set (entorhinal surface area: $\beta = -0.016$, $p_{FDR} = 0.035$). In the associations above, whole-genome PRS were significantly associated with psychotic-like communications ($\beta = 0.2218$, $p_{FDR} = 1.34 \times 10^{-7}$), distress ($\beta = 0.1943$, $p_{FDR} = 7.28 \times 10^{-16}$), and FA thalamic radiations ($\beta = -0.0143$, $p_{FDR} = 0.036$). Permutation analysis carried out for these associations revealed that they were not due to chance.

Conclusions: Our results indicate that genetic variation in 3 gene-sets relevant to schizophrenia (axon, postsynaptic density, histone) may confer risk for the disorder through effects on a number of neuroimaging variables that have previously been implicated in schizophrenia. As neuroimaging associations were stronger for gene-set PRS than whole-genome PRS, findings here highlight that selection of biologically relevant variants may address the heterogeneity of the disorder by providing further mechanistic insight into schizophrenia.

Introduction

Schizophrenia is a psychiatric disorder that is characterised by positive (hallucinations, delusions) and negative (anhedonia, avolition) symptoms, as well as marked cognitive impairment (1). Schizophrenia is thought to result from a complex combination of genetic and environmental factors, and its heritability is estimated at 80% (2).

Genome-wide association studies (GWAS) have reported increasing numbers of genomic loci associated with schizophrenia, lending support to the contribution of common genetic variants to the pathophysiology of schizophrenia (3,4). Genome-wide polygenic risk scores (PRS) calculated from GWAS explain approximately 17% (Nagelkerke's R^2) of the variance in schizophrenia (4). However, there exists substantial heterogeneity in the effect of risk variants, and genome-wide approaches may not be sufficient for patient stratification in downstream analyses. Mechanistic insight may be derived from GWASs, including the identification of biologically relevant gene sets in which risk variants are aggregated. For instance, The Network and Pathway Analysis Subgroup of the Psychiatric Genomics Consortium (PGC) investigated significant pathways across three adult psychiatric disorders: schizophrenia, major depressive disorder, and bipolar disorder. They identified a number of pathways specific to each disorder, but also common across the three, including histone methylation, immune, and neuronal signalling pathways (5).

Combining the predictive power of PRS with findings from pathway analysis by examining genetic variation within biologically relevant gene sets may address the inherent heterogeneity in schizophrenia and may provide additional mechanistic insight by detecting associations with biologically informative traits. This methodology has been applied to a number of relevant phenotypes to schizophrenia. For instance, Rampino et al. (2017) found that schizophrenia PRS calculated based on single nucleotide polymorphisms (SNPs) implicated in glutamatergic signalling were associated with attention, a cognitive process known to be impaired in schizophrenia (6). Yao et al. (2021) found that PRS calculated based on neural *microRNA-137* (*MIR137*) explained a disproportionately larger schizophrenia risk variance than genomic control PRS, when accounting for gene-set size (~2% *MIR137* N = ~1,000 genes; ~10%, whole-genome N = ~20,000 genes) (7). It is therefore possible to interrogate genetic risk aggregated to biologically relevant gene-sets to gain insight into the association between aggregated genetic risk and traits of interest to the disorder.

Schizophrenia PRSs have also been investigated in relation to the organ of interest in the disorder, the brain. Previous evidence has shown associations with disruptions in white matter microstructure and global and regional brain volumes, although results are inconsistent (8,9). As such, it was suggested that perhaps biologically relevant gene sets may reveal stronger associations

with neuroimaging phenotypes, as demonstrated recently (10). Grama et al. (2020) investigated whether behaviour- and neuronal-related gene-sets, previously found to be implicated in schizophrenia, are associated with subcortical volumes. They found that one gene-set, “abnormal behaviour”, was associated with right thalamic volume, and this association was robust across different p-value thresholds (10). This methodology can also be applied to other psychiatric disorders. For instance, PRS calculated for a previously established biological pathway (NETRIN1) in relation to major depressive disorder (MDD) were associated with relevant neuroimaging phenotypes, shedding light on links between biology and neuroimaging (11). This indicates that meaningful associations with traits of interest may be revealed when applying genomic methods addressing relevant parts of the genome.

Based on this evidence, we hypothesised that schizophrenia PRS aggregated in biologically relevant pathways that have previously been shown to play a role in schizophrenia would be associated with structural neuroimaging and clinical phenotypes in a general population adult sample. Identifying associations with specific neuroimaging phenotypes may provide an opportunity to disentangle the heterogeneity of the disorder, both in terms of genetic risk and inconsistent previous neuroimaging findings. We therefore selected 5 gene-sets, specifically: postsynaptic density (PSD), postsynaptic membrane (PSM), dendritic spine, axon, and histone H3-K4 methylation, previously identified by The Network and Pathway Analysis Subgroup of the PGC (5). These 5 cellular components and biological processes have previously been associated with schizophrenia in a number of other studies investigating both human and animal models (12–14). We calculated PRSs for each gene-set-specific set of SNPs and SNPs excluded from the gene-sets for paired comparisons (gene-set SNPs versus whole-genome (WG) minus gene-set SNPs PRS). We then tested their association with brain structural phenotypes (cortical volumes, thickness, and surface area; white matter microstructure as indexed by fractional anisotropy (FA) and mean diffusivity (MD); and subcortical volumes) and psychotic-like experiences (PLEs, Mental Health Questionnaire (MHQ)) in UK Biobank (UKB). We utilised the most up-to-date genetic, mental health, and imaging data. We hypothesized distinctive roles in the pathophysiology of schizophrenia for the different biologically relevant pathways tested, after adjustment for whole-genome PRSs, highlighting important mechanistic processes underlying the different phenotypes associated with schizophrenia. We expect this methodology to partly address the heterogeneity in schizophrenia through the identification of biologically relevant mechanisms.

Methods and Materials

Study population

UKB comprises 502,411 community-dwelling individuals whose information was recruited between 2006 and 2010 in the United Kingdom (<https://biobank.ctsu.ox.ac.uk/crystal/field.cgi?id=200>) (15). UKB received ethical approval from the research ethics committee (REC reference 11/NW/0382), and this study has been approved by the UKB Access Committee (Project No. 4844 and 16124). Written informed consent was obtained from all participants. The current study was conducted using the latest release of UKB neuroimaging data ($N_{\text{cortical}}=29,791$, $N_{\text{subcortical}}=29,536$, $N_{\text{white matter}}=27,917$) as well as $N=119,947$ with MHQ data. We excluded individuals with a diagnosis of schizophrenia as indicated by ICD-10 (F20, <https://biobank.ndph.ox.ac.uk/showcase/field.cgi?id=41270>) due to the small proportion of diagnosed individuals ($N=989$) and due to the fact that our analyses focussed on associations in the general population.

Gene-set selection

The top 5 gene-sets associated with schizophrenia were selected from The Network and Pathway Analysis Subgroup of the Psychiatric Genomics Consortium (5) and identified on Gene Ontology (GO) by searching for each pathway's GO identifier in the discovery manuscript above (5,16): postsynaptic density (GO:0014069), postsynaptic membrane (GO:0045211), dendritic spine (GO:0043197), axon (GO:0030424), and histone H3-K4 methylation (GO:0051568). The gene-sets were selected based on their robust association with schizophrenia in this, and previous studies (5,13,17,18). Further details on each gene-set are included in the Supplementary Materials and Supplementary Excel File 1.

Genotyping, SNP annotation and PRS profiling

Genotyping of 488,000 blood samples from UKB participants was carried out using the UK BiLEVE (<https://biobank.ctsu.ox.ac.uk/crystal/refer.cgi%3fid%3d149600>) or UKB Axiom (<https://biobank.ctsu.ox.ac.uk/crystal/refer.cgi%3fid%3d149601>) arrays (19). Further information on genotyping procedures and quality control are provided in https://biobank.ctsu.ox.ac.uk/crystal/crystal/docs/genotyping_gc.pdf and in Bycroft et al. (19).

Genetic data from both the base and target datasets were annotated in reference to human genome build 19.

We used SNPs from the largest available GWAS of schizophrenia (N=320,404, N=76,755 cases), carried out by Trubetskoy et al. (4) as the base dataset. Here, they identified schizophrenia associations with common variants at 287 distinct loci, and PRSs explained approximately 17% of the variance in schizophrenia in a European ancestry target sample (4). The GWAS sample utilised here did not include any individuals in UKB. The following quality check (QC) was performed based on the protocol by Choi et al. ((20), <https://choishingwan.github.io/PRS-Tutorial/base/>): removing SNPs with a minor allele frequency (MAF) < 0.01, and imputation information score < 0.8; removing duplicated and ambiguous SNPs; and ensuring that there were no overlapping samples with the target dataset (UKB). This resulted in a final dataset containing N=5,899,138 SNPs. QC in UKB was performed based on the same protocol (20) (<https://choishingwan.github.io/PRS-Tutorial/target/>): removing SNPs with a MAF < 0.01, Hardy-Weinberg Equilibrium (HWE) < 1×10^{-6} , SNPs that are missing in a high proportion of participants (<0.02), highly-correlated SNPs ($r^2=0.25$); and removing individuals that have a high rate of genotype missingness (0.02) and that contain high heterozygosity rates (> 3 SDs from the mean). Additionally, we ensured that our sample consisted of unrelated, white British participants with no overlap with PGC (21). The final genetic sample consisted of N=365,125 participants and N=5,974,990 SNPs, and this was reduced further when combining with clinical and imaging samples (see below).

ANNOVAR was utilised to annotate SNPs in the base dataset, if they were located between 20 kb upstream or downstream of the transcription start and end sites, respectively (22). Following functional annotation, SNPs located within each gene-set were extracted. See Supplementary Table 1 and Supplementary Excel File 1 for the number of genes and SNPs within each gene-set. These lists were used as input for the creation of gene-set PRSs as described below, as well as for creation of whole-genome PRS exclusive of each gene-set (i.e. each gene-set SNP list was input as an exclusion flag to create whole-genome PRS that did not include the specific gene-sets).

Gene-set PRSs for each individual in UKB were computed using PRSice (23) at 5 p-value thresholds (0.01, 0.05, 0.1, 0.5, and 1) by summing the number of risk alleles weighted by the strength of association with schizophrenia in the base dataset. Each gene-set PRS had its respective whole-genome PRS (WG PRS). PRSs were created with clumping-based pruning of SNPs in linkage disequilibrium ($r^2=0.25$, 500-kb window). SNPs within the extended MHC locus (chr6:25 Mb–35Mb) were excluded due to high LD in the region. The primary analysis in this manuscript comprises SNPs

that met a significance level of 0.1 (4). Analyses involving all other thresholds are included in the Supplementary Excel File 2 (Tables 1-7).

Phenotypes

Psychotic-like experiences

A Mental Health Questionnaire (MHQ) was sent to participants who provided an e-mail address from July 2016 to July 2017 (approximately 157,000 individuals). There were four unusual and psychotic experiences items included in the MHQ. Here, we utilised dichotomised responses on the following questions: "Did you ever believe that there was an unjust plot going on to harm you or to have people follow you, and which your family and friends did not believe existed?", "Did you ever believe that a strange force was trying to communicate directly with you by sending special signs or signals that you could understand but that no one else could understand (for example through the radio or television)?", "Did you ever hear things that other people said did not exist, like strange voices coming from inside your head talking to you or about you, or voices coming out of the air when there was no one around?", and "Did you ever see something that wasn't really there that other people could not see?". In addition, we also examined distress by selecting individuals who reported PLEs as distressing (as opposed to neutral or positive) and those who reported no PLE to determine associations with experiencing stress (24–26). The four lifetime PLEs will be referred to as “conspiracies”, “communications”, “voices”, and “visions”, based on the clinical significance of each PLE, and distressing PLEs will be referred to as “distress”. Frequencies for all items are noted in Table 1.

Neuroimaging phenotypes

A brain MRI scan was conducted for a subset of participants (27), and imaging-derived phenotypes (IDPs) were used in this study. T1 weighted and diffusion (DTI) MRI images were acquired using a Siemens Skyra 3 T scanner with a standard Siemens 32-channel RF receive head coil. Magnetic resonance imaging (MRI) acquisition, pre-processing, and QC for all structural phenotypes were performed utilising standardised protocols in UKB and are described in detail elsewhere (https://biobank.ctsu.ox.ac.uk/crystal/crystal/docs/brain_mri.pdf) (27,28). Exclusion criteria comprised removal of scans with severe normalization problems by the UKB (28). Individuals whose global values were >3 SDs from the sample mean were also excluded (range N excluded based on

imaging modality=105-232 participants, distribution plots created using “ggplot” in R are shown in Supplementary Figure 1) (29,30).

A list of all neuroimaging phenotypes investigated is included in Supplementary Table 2. Briefly, parcellation of white matter tracts was conducted using AutoPtx (27) and resulted in 15 white matter tracts (3 unilateral). Two DTI scalars, FA and MD, were utilised here (<https://biobank.ndph.ox.ac.uk/showcase/label.cgi?id=135>). Cortical regions of interest (ROIs) were identified using Desikan-Killiany-Tourville parcellation in FreeSurfer, and resulted in 31 cortical structures per hemisphere (31,32) (<https://biobank.ndph.ox.ac.uk/showcase/label.cgi?id=196>). Here, we investigated cortical thickness (CT), surface area (SA), and cortical volume (CV). Finally, 8 subcortical grey matter ROIs per hemisphere were identified (33). Sample size and descriptive statistics for all neuroimaging phenotypes are in Table 2.

In addition to the specific regions and tracts mentioned above, we also derived general and regional measures for white matter microstructure and cortical phenotypes. For white matter microstructure, we derived global and regional (association and projection fibres, thalamic radiations) measures of FA and MD by conducting principal component analysis (PCA) on sets of tracts and extracting scores of the first unrotated principal component. For cortical ROIs, we derived global and lobar measures by summing up all (global) or lobar-specific ROIs, as in previous studies (34,35).

Statistical analysis

All analyses were conducted using R (version 4.1.0) in a Linux environment. We used linear mixed-effects models (function “lme” in package “nlme”) for all bilateral neuroimaging phenotypes, with age, age², sex, 15 genetic principal components (PC), scan site, three magnetic resonance imaging head position coordinates (lateral brain position X, <https://biobank.ctsu.ox.ac.uk/crystal/field.cgi?id=25756>, transverse brain position Y, <https://biobank.ctsu.ox.ac.uk/crystal/field.cgi?id=25757>, longitudinal brain position Z<https://biobank.ctsu.ox.ac.uk/crystal/field.cgi?id=25757>), and genotype array set as covariates. Hemisphere was included as a within-subject covariate in all mixed-effects models. Intracranial volume (ICV) was included as a covariate for all grey matter phenotypes. We used general linear models (function “lm”) for unilateral, regional, and global neuroimaging phenotypes, using the same covariates as above and without hemisphere included as a separate term. Finally, we used logistic regression for all dichotomised PLEs, with age, sex, 15 genetic PCs, and genotype array set as

covariates. All models included gene-set PRS and each gene-set's respective whole-genome PRS as predictor variables. False Discovery Rate (FDR) was used to correct for multiple testing and was applied separately for each neuroimaging and clinical phenotype and across all p-value thresholds (36). Effect sizes from linear models were standardised throughout.

In order to establish that the effect of gene-set PRS on neuroimaging and clinical phenotypes was not due to chance (as the SNP set sizes in all gene-sets were much smaller compared to the whole genome (Supplementary Table 1)), a permutation analysis was carried out using a method developed by Cabrera et al. (37) for all significant associations. First, for significant gene-set associations, circular genomic permutation was applied, by placing all SNPs in the genome (excluding those pertaining to each of the gene-sets demonstrating significance) in a circular genome, based on their location. One thousand SNP lists with the same set size as each of these gene-sets were then permuted. Then, we created 1,000 PRSs based on these SNP lists, that were then included in regression models for the phenotypes that were originally identified to be significantly associated with the gene-set PRSs. Significance was then determined by comparing t-values from the real associations with those derived from the permuted regression models. The permutation p-value was calculated by observing the position of the real t-values in the list of permuted t-values and dividing the position by the number of permutations (N=1,000).

Results

All results presented below concern PRS at p-value threshold < 0.1. Descriptive statistics for clinical and neuroimaging phenotypes are noted in tables 1 and 2 below, respectively. Analyses involving all other thresholds are included in the Supplementary Excel File 2 (Tables 1-7).

Demographic characteristics

Table 1 and 2 go here.

Associations with psychotic-like experiences

Gene-set-specific significant findings and corresponding WG results are noted in Figure 1 below. The axon gene-set PRS was significantly associated with communications MHQ item (gene-set PRS $\beta=0.0916$, $p_{FDR}=0.04$; whole-genome PRS $\beta=0.2218$, $p_{FDR}=1.34 \times 10^{-7}$), while the PSD gene-set PRS was significantly associated with distress associated with PLEs (gene-set PRS $\beta=0.0588$, $p_{FDR}=0.02$; whole-genome PRS $\beta=0.1943$, $p_{FDR}=7.28 \times 10^{-16}$). Whole-genome PRS were associated with all four MHQ items, as well as distress, and effect sizes were of greater magnitude than associations with gene-set PRS (see Supplementary Excel File 2, Table 1). Effect sizes for gene-set-specific PRS ranged from 1×10^{-4} to 0.092 and for whole-genome PRS from 0.087 to 0.300. Results concerning other MHQ items at other p-values thresholds are in the Supplementary Excel File 2 (Table 1).

Associations with neuroimaging phenotypes

Gene-set PRS associations

The axon gene-set PRS were associated with parahippocampal gyrus volume (gene-set PRS $\beta=0.0156$, $p_{FDR}=0.03$; whole-genome PRS $\beta=-0.003$, $p_{FDR}=0.833$), FA thalamic radiations tract category (gene-set PRS $\beta=-0.014$, $p_{FDR}=0.036$; whole-genome PRS $\beta=-0.0143$, $p_{FDR}=0.036$), and FA posterior thalamic radiations (gene-set PRS $\beta=-0.016$, $p_{FDR}=0.048$; whole-genome PRS $\beta=-0.011$, $p_{FDR}=0.126$).

The PSD gene-set PRS were associated with global surface area (gene-set PRS $\beta=-0.012$, $p_{FDR}=0.034$; whole-genome PRS $\beta=-0.003$, $p_{FDR}=0.517$) and cingulate lobe surface area (gene-set PRS $\beta=-0.014$, $p_{FDR}=0.04$; whole-genome PRS $\beta=1 \times 10^{-4}$, $p_{FDR}=0.977$).

Finally, the histone H3-K4 methylation gene-set PRS were associated with entorhinal surface area (gene-set PRS $\beta=-0.016$, $p_{FDR}=0.035$; whole-genome PRS $\beta=0.01$, $p_{FDR}=0.164$).

Neuroimaging phenotypes associated with gene-set PRSs are indicated in Figures 2 and 3 below.

Whole-genome PRS associations

Whole-genome PRS, irrespective of which SNPs were removed prior to calculating PRSs, were associated with a number of neuroimaging phenotypes, indicated below and in the Supplementary Excel File 2 (Tables 2-7). All standardised beta values are absolute, and ranges are not reported if they are rounded to the same number. Results presented below are consistent across whole-genome PRS that had different gene-set SNPs excluded.

FA: global FA (β range=0.016-0.019, p_{FDR} range=0.004-0.03), association fibres (β range=0.018-0.021, p_{FDR} range=0.003-0.019), thalamic radiations (β range=0.014-0.018, p_{FDR} range=0.006-0.03), cingulate gyrus (β range=0.014-0.015, p_{FDR} range=0.014-0.034), anterior (β range=0.016-0.017, p_{FDR} range=0.019-0.038) and posterior thalamic radiations (β range=0.015-0.016, p_{FDR} range=0.025-0.03), and inferior longitudinal (β range=0.015-0.017, p_{FDR} range=0.015-0.043) and inferior fronto-occipital fasciculi (β range=0.015-0.016, p_{FDR} range=0.024-0.035).

MD: global MD (β range=0.015-0.017, p_{FDR} range=0.011-0.04), association fibres (β range=0.013-0.014, p_{FDR} range=0.034-0.042), thalamic radiations (β range=0.014-0.016, p_{FDR} range=0.011-0.04), projection fibres (β range=0.014, p_{FDR} range=0.04), corticospinal tract (β range=0.02-0.022, p_{FDR} range=0.005-0.023), anterior (β range=0.015, p_{FDR} range=0.037), superior, (β range=0.014, p_{FDR} range=0.043), and posterior thalamic radiations (β range=0.013, p_{FDR} range=0.04), inferior longitudinal fasciculus (β range=0.015, p_{FDR} range=0.04), and cingulate gyrus (β range=0.015, p_{FDR} range=0.04).

Thalamus (β range=0.019-0.023, p_{FDR} range=3.6x10⁻⁵-0.0009) and accumbens (β range=0.013-0.015, p_{FDR} range=0.005-0.032) were also significantly associated with whole-genome PRS after multiple comparison corrections. Finally, significant cortical regions included the volume of the medial orbitofrontal cortex (β range=0.016-0.019, p_{FDR} range=0.003-0.027) and superior temporal gyrus (β range=0.018-0.02, p_{FDR} range=8.3x10⁻⁴-0.009), and the surface area of superior temporal gyrus (β range=0.015-0.016, p_{FDR} range=0.022-0.04).

Permutation analysis

For those gene-set PRSs that were significantly associated with PLEs, white matter microstructure or cortical regions (axon: psychotic-like communications, volume of parahippocampal

gyrus, thalamic radiations tract category, posterior thalamic radiations; PSD: distress, surface area of the cingulate lobe and global surface area; histone H3-K4 methylation: entorhinal cortex surface area), we performed circular genomic permutation analysis. We found that the significant associations with the gene-set PRSs in these clinical and neuroimaging phenotypes were not due to chance, based on a permutation p-value computed by comparing t-values from the real associations with t-values from the permuted associations (Table 3).

Discussion

In this study, we aimed to investigate the association between biologically relevant pathway PRSs and clinical and neuroimaging phenotypes, after adjustment for respective whole-genome PRSs in $N = \sim 29,000$ (neuroimaging phenotypes) and $N = 119,947$ (clinical phenotypes). We calculated PRSs based on the largest, most recent schizophrenia GWAS to date (4). We found significant associations for the axon, PSD, and histone H3-K4 methylation gene-sets with a number of cortical regions and white matter tracts, as well as with PLEs, specifically psychotic-like communications and distress associated with having a PLE. Associations with PLEs were stronger for whole-genome PRS, while associations with neuroimaging variables were stronger for gene-set PRS.

The three gene-sets with identified significant associations here have previously been involved in schizophrenia. The Network and Pathway Analysis Subgroup of the Psychiatric Genomics Consortium (5) identified the three pathways to be implicated in schizophrenia through robust computational analyses, by aggregating gene-sets from a large number of databases. The most significant genetic contribution to schizophrenia was found in genes encoding proteins located in excitatory synapses and in particular, the proteome of the PSD, followed by histone methylation-related processes. The PSD of excitatory synapses comprises protein complexes that assemble glutamate-sensitive neurotransmitter receptors to intracellular proteins (38,39). Postsynaptic networks have long been implicated in schizophrenia (40–42) as they play a role in cognition and synaptic plasticity, features that are known to be disrupted in schizophrenia (13,43). In addition, both post-synaptic and pre-synaptic networks were uncovered through gene prioritisation in the latest schizophrenia GWAS, highlighting the consistency of associations with this pathway over time as well as further rationale to investigate the pathway in this study (4).

Here, we identified associations between the PSD gene-set and decreased global and cingulate lobe surface area, as well as higher distress associated with PLEs. The cingulate lobe is part of the limbic system and comprises four cortical regions, specifically rostral, caudal, posterior, and isthmus cingulate. The region is involved in behaviour and emotion regulation and cognitive processes including memory, attention, and motivation, which are disrupted in schizophrenia (44). Volumes in this region were reduced in previous studies investigating their association with schizophrenia, and a systematic review concluded that hypoactivity of the cingulate cortex underlies the manifestation of negative symptoms in many patients, although the studies analysed provided

inconsistent results (44,45). Interestingly, whole-genome PRS did not show associations with cingulate or global surface area in previous studies (46,47). Associations identified here indicate that narrowing the genome to a biologically relevant gene-set may reveal associations that were not observed genome-wide.

The axon gene-set, a cellular component that conducts electrical signals to presynaptic boutons that store and release neurotransmitters, has also been found to play an important role in schizophrenia. Specifically, disruption in axon guidance and axonal growth have been associated with increased schizophrenia risk in both human and mouse models (48,49). A recent study showed that individuals at high genetic risk for schizophrenia had hemispherical asymmetry in whole-brain structural networks, indicating that genetic susceptibility to schizophrenia modulated white matter network abnormalities. Additionally, gene-set enrichment analysis found that genes participating in the PRS threshold used were involved in multiple relevant pathways, including axonal growth and axon guidance (18). The axon gene-set is therefore a highly relevant route to investigate in the context of schizophrenia. Here, the axon gene-set was associated with thalamic radiations, white matter microstructural tracts that link the thalamus to the rest of the cerebral cortex (50), and volume of the parahippocampal gyrus, a cortical region that plays a role in memory processes such as encoding and retrieval (51). Both neuroimaging phenotypes have been implicated in schizophrenia (52), and have recently been associated with state anhedonia and PRS for anhedonia, a core negative symptom of schizophrenia (53). The findings here indicate that genes conferring risk for schizophrenia that are aggregated in the axon gene-set are strengthening evidence for brain structural regions that are already implicated in schizophrenia psychopathology.

Finally, in this study the histone H3-K4 methylation gene-set was associated with entorhinal surface area. Histone H3-K4 methylation involves the modification of histone H3 by the addition of one or more methyl groups to lysine at position 4 of the histone. Histones, and specifically H3, are used to package DNA, and modifications lead to changes in gene expression (54). Epigenetic processes, including histone and DNA methylation, have been associated with schizophrenia through candidate gene regulation (*HDAC1*, *GAD67*) as well as epigenome-wide studies, lending support to the investigation of epigenetic modifications in schizophrenia (55–57). A key feature of schizophrenia is that it has its age of onset in young adults and the transcriptional regulation of schizophrenia risk genes encoding synaptic proteins occurs at the age of onset, potentially through mechanisms involving H3-K4 methylation (42).

The entorhinal cortex plays a role in the integration of multisensory information between cortical and subcortical structures. It is strongly connected to the hippocampus, and is involved in

memory processes such as formation and consolidation (58). In studies investigating a neurodevelopmental animal model of schizophrenia, lesions in the entorhinal cortex, created early in the developmental period, were associated with enhanced mesolimbic dopamine release at a later timepoint, expressed through increased locomotor activity. This indicates that structural disruptions in this area are relevant for schizophrenia-like presentations (59). Interestingly, in an animal model, H3-K4 methylation was found to be upregulated in the hippocampus 1 hour after inducing contextual fear conditioning, a memory-related task which aims to rapidly create context-related fear memories (17). Although not directly related to the entorhinal cortex, this finding indicates that H3-K4 methylation may be a useful candidate in the investigation of some schizophrenia-related symptoms in a subcortical structure closely linked to the entorhinal region. Lastly, in a recent human study investigating cortical thickness, surface area, and folding index of the entorhinal cortex, Schultz et al. (2009) uncovered a link between left surface area and folding index and increased psychotic symptom severity, further supporting the role of the region in schizophrenia (58).

Interestingly, the dendritic spine and PSM gene-sets were not associated with any phenotypes investigated here. Both cellular components have been linked to schizophrenia previously and are closely related to the other biologically relevant pathways investigated here (i.e. PSD, axon gene-sets) (60,61). Results here may indicate that, while these gene-sets are still relevant in schizophrenia, we may need additional information (e.g. interaction with other relevant biological pathways or investigation of copy number variants in relation to these cellular components (62)) to identify their association with the clinical and structural brain features investigated here.

All psychotic-like experiences, as well as distress, were significantly associated with whole-genome PRS, as expected. This would indicate that the PRS generated from the schizophrenia GWAS are able to predict schizophrenia-related traits and are therefore a valuable tool here. In addition, a number of neuroimaging phenotypes were associated with whole-genome PRS (irrespective of which gene-set-specific SNPs were removed prior to calculation), including white matter microstructure: fractional anisotropy (global metrics, association fibres, thalamic radiations, cingulate gyrus, anterior and posterior thalamic radiations, and inferior longitudinal and inferior fronto-occipital fasciculi) and mean diffusivity (global metrics, association and projection fibres, thalamic radiations, corticospinal tract, anterior, superior, and posterior thalamic radiations, inferior longitudinal fasciculus, and cingulate gyrus); subcortical volumes: thalamus and accumbens; cortical regions: volume of the medial orbitofrontal cortex and superior temporal gyrus, and surface area of superior temporal gyrus. These areas have been associated with whole-genome PRS in previous studies, calculated both with the GWAS summary statistics utilised here, and with older GWAS

(63,64). The findings here confirm previous results and provide additional evidence of an association between increased genetic risk for schizophrenia and disruptions in both grey and white matter.

There are a number of strengths in the current study. We utilised the largest, most recent GWAS of schizophrenia to determine associations in a large sample comprising clinical and neuroimaging datasets. Our findings were further tested utilising permutation analysis, indicating that our results were not due to chance. Finally, we were able to identify associations that could in future be utilised to identify stratified patient populations, potentially leading to earlier diagnosis and applied interventions.

Limitations of the current study include the investigation of these associations in a general population sample. This may partially explain low effect sizes observed throughout, and it is expected that these effect sizes will increase as clinical samples with available genetic and neuroimaging data increase. In addition, UK Biobank participants are generally healthier and wealthier than the general population, as shown in Fry et al. (2017) (65). Secondly, we are unable to generalise these findings to populations of non-European ancestry, as both GWAS and target samples were selected based on individuals of European descent. However, efforts are continually being made to collect data in other ancestries, and the associations identified here could be explored in these cohorts. A further limitation includes the use of the MHQ, which reports lifetime occurrence of PLEs, and not a specific timepoint. Therefore, our results here may differ in other age populations. Further, the questions asked are self-reported and it is unclear whether the experiences reported arose from normal experiences or were linked to a psychiatric disorder. However, the strong associations with schizophrenia whole-genome PRS indicate that the items pick up on some psychosis-related features.

The pathways investigated here were previously found to be implicated in schizophrenia in both animal and human studies (4,17,53). In the current study, we were able to identify structural neuroimaging as well as clinical phenotypes associated with biologically informed PRSs, and these were shown to be more strongly associated with neuroimaging phenotypes than whole-genome PRS. These findings indicate that genetic risk aggregated to biologically relevant pathways could be more informative than genome-wide risk and may be of relevance to future studies attempting to address heterogeneity and stratify individuals by genetic risk.

Funding

This research was funded in whole, or in part, by the Wellcome Trust [216767/Z/19/Z]. This analysis uses linked data from UKB applications 4844 and 16124. For the purpose of open access, the author has applied a CC BY public copyright licence to any Author Accepted Manuscript version arising from this submission. MCB is supported by a Guarantors of Brain Non-clinical Post-Doctoral Fellowship and British Medical Association Margaret Temple Grant. HCW is supported by the Royal College of Physicians of Edinburgh (Sim Fellowship). MJA is supported by MRC Mental Health Data Pathfinder Award (MC_PC_17209). KM is supported by the Chief Scientist Office for Scotland and NHS Education for Scotland (PCL/17/01). This study is supported by a Wellcome Trust Strategic Award “Stratifying Resilience and Depression Longitudinally” (STRADL) (Reference 104036/Z/14/Z).

Financial disclosures

The authors declare no conflicts of interest in relation to the work presented here. AMM has previously received funding from commercial sources (Pfizer, Roche, Abbvie, Sunovion, Jannssen and Lilly), but none of these funds or funders were used or involved in the current study.

Acknowledgements

The authors wish to thank all the participants who are part of the UK Biobank cohort, and all of the UK Biobank staff who make this work possible. We would also like to thank our funders, Wellcome Trust, the Royal College of Physicians of Edinburgh, the Medical Research Council, the Chief Scientist Office for Scotland, NHS Education for Scotland, the Guarantors of Brain, and the British Medical Association.

Data sharing statement

Data used in the preparation of this article were obtained from the UK Biobank cohort (<https://www.ukbiobank.ac.uk/>).

Scripts for the analyses in this project can be accessed at the following GitHub repository: <https://github.com/mirunabarbu8/Fellowship-project>.

References

1. Owen MJ, Sawa A, Mortensen PB. Schizophrenia. *Lancet*. 2016 Jul 2;388(10039):86–97.
2. Hilker R, Helenius D, Fagerlund B, Skytthe A, Christensen K, Werge TM, et al. Heritability of Schizophrenia and Schizophrenia Spectrum Based on the Nationwide Danish Twin Register. *Biol Psychiatry*. 2018 Mar 15;83(6):492–8.
3. Lam M, Chen CY, Li Z, Martin AR, Bryois J, Ma X, et al. Comparative genetic architectures of schizophrenia in East Asian and European populations. *Nat Genet* [Internet]. 2019 Dec 1 [cited 2022 Apr 22];51(12):1670–8. Available from: <https://pubmed.ncbi.nlm.nih.gov/31740837/>
4. Trubetskoy V, Pardiñas AF, Qi T, Panagiotaropoulou G, Awasthi S, Bigdeli TB, et al. Mapping genomic loci implicates genes and synaptic biology in schizophrenia. *Nat* 2022 6047906 [Internet]. 2022 Apr 8 [cited 2022 Apr 22];604(7906):502–8. Available from: <https://www.nature.com/articles/s41586-022-04434-5>
5. O’duhlaine C, Rossin L, Lee PH, Duncan L, Parikshak NN, Newhouse S, et al. Psychiatric genome-wide association study analyses implicate neuronal, immune and histone pathways. *Nat Neurosci* [Internet]. 2015 Feb 17 [cited 2022 Apr 22];18(2):199. Available from: </pmc/articles/PMC4378867/>
6. Rampino A, Taurisano P, Fanelli G, Attrotto M, Torretta S, Antonucci LA, et al. A Polygenic Risk Score of glutamatergic SNPs associated with schizophrenia predicts attentional behavior and related brain activity in healthy humans. *Eur Neuropsychopharmacol*. 2017 Sep 1;27(9):928–39.
7. Yao Y, Guo W, Zhang S, Yu H, Yan H, Zhang H, et al. Cell type-specific and cross-population polygenic risk score analyses of MIR137 gene pathway in schizophrenia. *iScience*. 2021 Jul 23;24(7):102785.
8. Terwisscha Van Scheltinga AF, Bakker SC, Van Haren NEM, Derks EM, Buizer-Voskamp JE, Boos HBM, et al. Genetic schizophrenia risk variants jointly modulate total brain and white matter volume. *Biol Psychiatry* [Internet]. 2013 Mar 15 [cited 2022 Apr 26];73(6):525. Available from: </pmc/articles/PMC3573254/>
9. Alnæs D, Kaufmann T, Van Der Meer D, Córdova-Palomera A, Rokicki J, Moberget T, et al. Brain Heterogeneity in Schizophrenia and Its Association With Polygenic Risk. *JAMA Psychiatry* [Internet]. 2019 Jul 1 [cited 2022 Apr 26];76(7):739–48. Available from: <https://jamanetwork.com/journals/jamapsychiatry/fullarticle/2730004>
10. Grama S, Willcocks I, Hubert JJ, Pardiñas AF, Legge SE, Bracher-Smith M, et al. Polygenic risk for schizophrenia and subcortical brain anatomy in the UK Biobank cohort. *Transl Psychiatry* 2020 101 [Internet]. 2020 Sep 9 [cited 2022 Apr 22];10(1):1–10. Available from:

<https://www.nature.com/articles/s41398-020-00940-0>

11. Barbu MC, Zeng Y, Shen X, Cox SR, Clarke TK, Gibson J, et al. Association of Whole-Genome and NETRIN1 Signaling Pathway–Derived Polygenic Risk Scores for Major Depressive Disorder and White Matter Microstructure in the UK Biobank. *Biol Psychiatry Cogn Neurosci Neuroimaging*. 2019 Jan 1;4(1):91–100.
12. Moyer CE, Shelton MA, Sweet RA. Dendritic spine alterations in schizophrenia. *Neurosci Lett*. 2015 Aug 5;601:46–53.
13. Föcking M, Lopez LM, English JA, Dicker P, Wolff A, Brindley E, et al. Proteomic and genomic evidence implicates the postsynaptic density in schizophrenia. *Mol Psychiatry* 2015 204 [Internet]. 2014 Jul 22 [cited 2022 May 5];20(4):424–32. Available from: <https://www.nature.com/articles/mp201463>
14. Shen E, Shulha H, Weng Z, Akbarian S. Regulation of histone H3K4 methylation in brain development and disease. *Philos Trans R Soc B Biol Sci* [Internet]. 2014 [cited 2022 May 5];369(1652). Available from: <https://royalsocietypublishing.org/doi/full/10.1098/rstb.2013.0514>
15. Sudlow C, Gallacher J, Allen N, Beral V, Burton P, Danesh J, et al. UK Biobank: An Open Access Resource for Identifying the Causes of a Wide Range of Complex Diseases of Middle and Old Age. *PLOS Med* [Internet]. 2015 Mar 1 [cited 2022 Apr 25];12(3):e1001779. Available from: <https://journals.plos.org/plosmedicine/article?id=10.1371/journal.pmed.1001779>
16. Gene Ontology Resource [Internet]. [cited 2022 Apr 26]. Available from: <http://geneontology.org/>
17. Gupta S, Kim SY, Artis S, Molfese DL, Schumacher A, Sweatt JD, et al. Histone Methylation Regulates Memory Formation. *J Neurosci* [Internet]. 2010 Mar 10 [cited 2022 May 16];30(10):3589. Available from: <http://pmc/articles/PMC2859898/>
18. Zhu Y, Wang S, Gong X, Edmiston EK, Zhong S, Li C, et al. Associations between hemispheric asymmetry and schizophrenia-related risk genes in people with schizophrenia and people at a genetic high risk of schizophrenia. *Br J Psychiatry* [Internet]. 2021 Jul 1 [cited 2022 May 16];219(1):392–400. Available from: <https://www.cambridge.org/core/journals/the-british-journal-of-psychiatry/article/associations-between-hemispheric-asymmetry-and-schizophrenia-related-risk-genes-in-people-with-schizophrenia-and-people-at-a-genetic-high-risk-of-schizophrenia/8506769E0926B8AF52DB15E6D3FBA614>
19. Bycroft C, Freeman C, Petkova D, Band G, Elliott LT, Sharp K, et al. The UK Biobank resource with deep phenotyping and genomic data. *Nat* 2018 5627726 [Internet]. 2018 Oct 10 [cited 2022 Apr 25];562(7726):203–9. Available from: <https://www.nature.com/articles/s41586-018-0579-z>
20. Choi SW, Mak TSH, O'Reilly PF. Tutorial: a guide to performing polygenic risk score analyses. *Nat Protoc*. 2020 Sep 1;15(9):2759–72.
21. Smith BH, Campbell A, Linksted P, Fitzpatrick B, Jackson C, Kerr SM, et al. Cohort Profile: Generation Scotland: Scottish Family Health Study (GS:SFHS). The study, its participants and their potential for genetic research on health and illness. *Int J Epidemiol* [Internet]. 2013 Jun 1 [cited 2022 Mar 23];42(3):689–700. Available from: <https://academic.oup.com/ije/article/42/3/689/909916>
22. Wang K, Li M, Hakonarson H. ANNOVAR: functional annotation of genetic variants from high-throughput sequencing data. *Nucleic Acids Res* [Internet]. 2010 Sep 1 [cited 2022 Apr

- 26];38(16):e164–e164. Available from:
<https://academic.oup.com/nar/article/38/16/e164/1749458>
23. Euesden J, Lewis CM, O'Reilly PF. PRSice: Polygenic Risk Score software. *Bioinformatics* [Internet]. 2015 May 1 [cited 2022 Apr 26];31(9):1466–8. Available from:
<https://pubmed.ncbi.nlm.nih.gov/25550326/>
24. Schoorl J, Barbu MC, Shen X, Harris MR, Adams MJ, Whalley HC, et al. Grey and white matter associations of psychotic-like experiences in a general population sample (UK Biobank). *Transl Psychiatry* 2021 111 [Internet]. 2021 Jan 7 [cited 2022 Apr 26];11(1):1–11. Available from:
<https://www.nature.com/articles/s41398-020-01131-7>
25. Alloza C, Blesa-Cábez M, Bastin ME, Madole JW, Buchanan CR, Janssen J, et al. Psychotic-like experiences, polygenic risk scores for schizophrenia, and structural properties of the salience, default mode, and central-executive networks in healthy participants from UK Biobank. *Transl Psychiatry* 2020 101 [Internet]. 2020 Apr 27 [cited 2022 Apr 26];10(1):1–13. Available from:
<https://www.nature.com/articles/s41398-020-0794-x>
26. Bosma MJ, Cox SR, Ziermans T, Buchanan CR, Shen X, Tucker-Drob EM, et al. White matter, cognition and psychotic-like experiences in UK Biobank. *Psychol Med* [Internet]. 2021 [cited 2022 Apr 26];1–10. Available from: <https://www.cambridge.org/core/journals/psychological-medicine/article/white-matter-cognition-and-psychoticlike-experiences-in-uk-biobank/5A6A3F2BE82DF66341271996187D2200>
27. Alfaro-Almagro F, Jenkinson M, Bangerter NK, Andersson JLR, Griffanti L, Douaud G, et al. Image processing and Quality Control for the first 10,000 brain imaging datasets from UK Biobank. *Neuroimage* [Internet]. 2018 Feb 1 [cited 2022 Apr 25];166:400–24. Available from:
<https://pubmed.ncbi.nlm.nih.gov/29079522/>
28. Smith SM, Alfaro-Almagro F, Miller KL. UK Biobank Brain Imaging Documentation UK Biobank Brain Imaging Documentation Contributors to UK Biobank Brain Imaging. [cited 2022 Apr 25]; Available from: <http://www.ukbiobank.ac.uk>
29. Shen X, Adams MJ, Ritakari TE, Cox SR, McIntosh AM, Whalley HC. White Matter Microstructure and Its Relation to Longitudinal Measures of Depressive Symptoms in Mid- and Late Life. *Biol Psychiatry*. 2019 Nov 15;86(10):759–68.
30. Shen X, Reus LM, Cox SR, Adams MJ, Liewald DC, Bastin ME, et al. Subcortical volume and white matter integrity abnormalities in major depressive disorder: findings from UK Biobank imaging data. *Sci Reports* 2017 71 [Internet]. 2017 Jul 17 [cited 2022 May 19];7(1):1–10. Available from: <https://www.nature.com/articles/s41598-017-05507-6>
31. Alexander B, Loh WY, Matthews LG, Murray AL, Adamson C, Beare R, et al. Desikan-Killiany-Tourville Atlas compatible version of m-CRIB neonatal parcellated whole brain atlas: The m-Crib 2.0. *Front Neurosci*. 2019;13(FEB):34.
32. Elliott LT, Sharp K, Alfaro-Almagro F, Shi S, Miller KL, Douaud G, et al. Genome-wide association studies of brain imaging phenotypes in UK Biobank. *Nat* 2018 5627726 [Internet]. 2018 Oct 10 [cited 2022 May 19];562(7726):210–6. Available from:
<https://www.nature.com/articles/s41586-018-0571-7>
33. Fischl B, Salat DH, Busa E, Albert M, Dieterich M, Haselgrove C, et al. Whole brain segmentation: automated labeling of neuroanatomical structures in the human brain. *Neuron* [Internet]. 2002 Jan 31 [cited 2022 Apr 25];33(3):341–55. Available from:
<https://pubmed.ncbi.nlm.nih.gov/11832223/>

34. O'Connell KS, Sønderby IE, Frei O, Van Der Meer D, Athanasiu L, Smeland OB, et al. Association between complement component 4A expression, cognitive performance and brain imaging measures in UK Biobank. *Psychol Med* [Internet]. 2021 [cited 2022 Apr 25];1–11. Available from: <https://www.cambridge.org/core/journals/psychological-medicine/article/association-between-complement-component-4a-expression-cognitive-performance-and-brain-imaging-measures-in-uk-biobank/D26127B6301C8C58148F3F4233403022>
35. Green C, Stolicyn A, Harris MA, Shen X, Romaniuk L, Barbu MC, et al. Hair glucocorticoids are associated with childhood adversity, depressive symptoms and reduced global and lobar grey matter in Generation Scotland. *Transl Psychiatry* 2021 111 [Internet]. 2021 Oct 12 [cited 2022 Apr 25];11(1):1–9. Available from: <https://www.nature.com/articles/s41398-021-01644-9>
36. Benjamini Y, Hochberg Y. Controlling the False Discovery Rate: A Practical and Powerful Approach to Multiple Testing. *Source J R Stat Soc Ser B*. 1995;57(1):289–300.
37. Cabrera CP, Navarro P, Huffman JE, Wright AF, Hayward C, Campbell H, et al. Uncovering networks from genome-wide association studies via circular genomic permutation. *G3 (Bethesda)* [Internet]. 2012 Sep [cited 2022 Apr 26];2(9):1067–75. Available from: <https://pubmed.ncbi.nlm.nih.gov/22973544/>
38. Bayés Á, Van De Lagemaat LN, Collins MO, Croning MDR, Whittle IR, Choudhary JS, et al. Characterization of the proteome, diseases and evolution of the human postsynaptic density. *Nat Neurosci* [Internet]. 2011 Jan [cited 2022 Jul 18];14(1):19–21. Available from: <https://pubmed.ncbi.nlm.nih.gov/21170055/>
39. Sorokina O, Mclean C, Croning MDR, Heil KF, Wysocka E, He X, et al. A unified resource and configurable model of the synapse proteome and its role in disease. *Sci Reports* 2021 111 [Internet]. 2021 May 11 [cited 2022 Jul 18];11(1):1–9. Available from: <https://www.nature.com/articles/s41598-021-88945-7>
40. Fromer M, Pocklington AJ, Kavanagh DH, Williams HJ, Dwyer S, Gormley P, et al. De novo mutations in schizophrenia implicate synaptic networks. *Nature* [Internet]. 2014 [cited 2022 Jul 18];506(7487):179–84. Available from: <https://pubmed.ncbi.nlm.nih.gov/24463507/>
41. Purcell SM, Moran JL, Fromer M, Ruderfer D, Solovieff N, Roussos P, et al. A polygenic burden of rare disruptive mutations in schizophrenia. *Nature* [Internet]. 2014 [cited 2022 Jul 18];506(7487):185–90. Available from: <https://pubmed.ncbi.nlm.nih.gov/24463508/>
42. Skene NG, Roy M, Grant SG. A genomic lifespan program that reorganises the young adult brain is targeted in schizophrenia. *Elife*. 2017 Sep 12;6.
43. Nithianantharajah J, Komiyama NH, McKechnie A, Johnstone M, Blackwood DH, Clair DS, et al. Synaptic scaffold evolution generated components of vertebrate cognitive complexity. *Nat Neurosci* 2012 161 [Internet]. 2012 Dec 2 [cited 2022 Jul 18];16(1):16–24. Available from: <https://www.nature.com/articles/nn.3276>
44. Bersani FS, Minichino A, Fojanesi M, Gallo M, Maglio G, Valeriani G, Biondi M FP. Cingulate Cortex in Schizophrenia: its relation with negative symptoms and psychotic onset. A review study. *Eur Rev Med Pharmacol Sci*. 2014;18(22):3354–67.
45. Wang L, Hosakere M, Trein JCL, Miller A, Ratnanather JT, Barch DM, et al. Abnormalities of cingulate gyrus neuroanatomy in schizophrenia. *Schizophr Res*. 2007 Jul 1;93(1–3):66–78.
46. Neilson E, Shen X, Cox SR, Clarke TK, Wigmore EM, Gibson J, et al. Impact of Polygenic Risk for Schizophrenia on Cortical Structure in UK Biobank. *Biol Psychiatry*. 2019 Oct 1;86(7):536–44.

47. Zhu X, Ward J, Cullen B, Lyall DM, Strawbridge RJ, Smith DJ, et al. Polygenic Risk for Schizophrenia, Brain Structure, and Environmental Risk in UK Biobank. *Schizophr Bull Open* [Internet]. 2021 Jan 1 [cited 2022 May 12];2(1). Available from: <https://academic.oup.com/schizbullopen/article/2/1/sgab042/6375001>
48. Wang Z, Li P, Wu T, Zhu S, Deng L, Cui G. Axon guidance pathway genes are associated with schizophrenia risk. *Exp Ther Med* [Internet]. 2018 Dec 1 [cited 2022 May 13];16(6):4519–26. Available from: <http://www.spandidos-publications.com/10.3892/etm.2018.6781/abstract>
49. Mukai J, Tamura M, Fénelon K, Rosen AM, Spellman TJ, Kang R, et al. Molecular Substrates of Altered Axonal Growth and Brain Connectivity in a Mouse Model of Schizophrenia. *Neuron*. 2015 May 6;86(3):680–95.
50. Lebel C, Deoni S. The development of brain white matter microstructure. *Neuroimage*. 2018 Nov 15;182:207–18.
51. Van Hoesen GW, Augustinack JC, Dierking J, Redman SJ, Thangavel R. The Parahippocampal Gyrus in Alzheimer's Disease: Clinical and Preclinical Neuroanatomical Correlates. *Ann N Y Acad Sci* [Internet]. 2000 Jun 1 [cited 2022 May 13];911(1):254–74. Available from: <https://onlinelibrary.wiley.com/doi/full/10.1111/j.1749-6632.2000.tb06731.x>
52. McIntosh AM, Maniega SM, Lymer GKS, McKirdy J, Hall J, Sussmann JED, et al. White Matter Tractography in Bipolar Disorder and Schizophrenia. *Biol Psychiatry*. 2008 Dec 15;64(12):1088–92.
53. Zhu X, Ward J, Cullen B, Lyall DM, Strawbridge RJ, Lyall LM, et al. Phenotypic and genetic associations between anhedonia and brain structure in UK Biobank. *Transl Psychiatry* 2021 11 [Internet]. 2021 Jul 16 [cited 2022 May 13];11(1):1–8. Available from: <https://www.nature.com/articles/s41398-021-01522-4>
54. Greer EL, Shi Y. Histone methylation: a dynamic mark in health, disease and inheritance. *Nat Rev Genet* 2012 135 [Internet]. 2012 Apr 3 [cited 2022 May 13];13(5):343–57. Available from: <https://www.nature.com/articles/nrg3173>
55. Gavin DP, Sharma RP. Histone modifications, DNA methylation, and Schizophrenia. *Neurosci Biobehav Rev*. 2010 May 1;34(6):882–8.
56. Montano C, Taub MA, Jaffe A, Briem E, Feinberg JL, Trygvadottir R, et al. Association of DNA Methylation Differences With Schizophrenia in an Epigenome-Wide Association Study. *JAMA psychiatry* [Internet]. 2016 May 1 [cited 2022 May 16];73(5):506–14. Available from: <https://pubmed.ncbi.nlm.nih.gov/27074206/>
57. Huang HS, Matevosian A, Whittle C, Se YK, Schumacher A, Baker SP, et al. Prefrontal Dysfunction in Schizophrenia Involves Mixed-Lineage Leukemia 1-Regulated Histone Methylation at GABAergic Gene Promoters. *J Neurosci* [Internet]. 2007 Oct 17 [cited 2022 May 13];27(42):11254. Available from: <https://pmc/articles/PMC6673022/>
58. Schultz CC, Koch K, Wagner G, Roebel M, Schachtzabel C, Nenadic I, et al. Psychopathological correlates of the entorhinal cortical shape in schizophrenia. *Eur Arch Psychiatry Clin Neurosci* [Internet]. 2010 Jun 7 [cited 2022 May 13];260(4):351–8. Available from: <https://link.springer.com/article/10.1007/s00406-009-0083-4>
59. Sumiyoshi T, Tsunoda M, Uehara T, Tanaka K, Itoh H, Sumiyoshi C, et al. Enhanced locomotor activity in rats with excitotoxic lesions of the entorhinal cortex, a neurodevelopmental animal model of schizophrenia: Behavioral and in vivo microdialysis studies. *Neurosci Lett*. 2004 Jul 1;364(2):124–9.

60. Glausier JR, Lewis DA. Dendritic spine pathology in schizophrenia. *Neuroscience*. 2013 Oct 22;251:90–107.
61. De Bartolomeis A, Latte G, Tomasetti C, Iasevoli F. Glutamatergic postsynaptic density protein dysfunctions in synaptic plasticity and dendritic spines morphology: Relevance to schizophrenia and other behavioral disorders pathophysiology, and implications for novel therapeutic approaches. *Mol Neurobiol* [Internet]. 2014 Sep 3 [cited 2022 May 16];49(1):484–511. Available from: <https://link.springer.com/article/10.1007/s12035-013-8534-3>
62. Kirov G, Pocklington AJ, Holmans P, Ivanov D, Ikeda M, Ruderfer D, et al. De novo CNV analysis implicates specific abnormalities of postsynaptic signalling complexes in the pathogenesis of schizophrenia. *Mol Psychiatry*. 2012;17(2):142–53.
63. van der Merwe C, Passchier R, Mufford M, Ramesar R, Dalvie S, Stein DJ. Polygenic risk for schizophrenia and associated brain structural changes: A systematic review. *Compr Psychiatry* [Internet]. 2019 Jan 1 [cited 2022 Apr 26];88:77–82. Available from: <https://pubmed.ncbi.nlm.nih.gov/30529765/>
64. Stauffer EM, Bethlehem RA, Warrier V, Murray GK, Romero-Garcia R, Seidlitz J, et al. Grey and white matter microstructure is associated with polygenic risk for schizophrenia. *Mol Psychiatry* 2021 2612 [Internet]. 2021 Aug 30 [cited 2022 May 16];26(12):7709–18. Available from: <https://www.nature.com/articles/s41380-021-01260-5>
65. Fry A, Littlejohns TJ, Sudlow C, Doherty N, Adamska L, Sprosen T, et al. Comparison of Sociodemographic and Health-Related Characteristics of UK Biobank Participants with Those of the General Population. *Am J Epidemiol*. 2017;186(9):1026–34.

	MHQ
Age mean (SD)	56.09 (7.69)
Sex, F (%)	67,432 (56%)
MHQ – heard unreal voice (Yes, %)	1,918 (1.6%)
MHQ – seen unreal vision (Yes, %)	3,696 (3%)
MHQ – believed in unreal conspiracy (Yes, %)	724 (0.60%)
MHQ – believed in unreal communications (Yes, %)	652 (0.54%)
Distressing PLEs (Yes, %)	2,046 (1.76%)

Table 1. Demographic characteristics for the clinical samples.

	Cortical regions	Subcortical volumes	White matter microstructure
Age mean (SD)	63.71 (7.48)		
Sex, F (%)	15,666 (53%)	15,557 (53%)	14,745 (53%)
Scan site			
Cheadle	24,910		
Reading	5,064		
Newcastle	9,968		

Table 2. Demographic characteristics for the neuroimaging samples. N is different for each variable as outlier exclusion (3 SDs from mean) was applied individually to each phenotype.

Gene-set PRS	Phenotype	Gene-set PRS β	Gene-set PRS t-value	Gene-set PRS calculated p-value
Axon	Communications	0.0916	2.306	0.026
	Parahippocampal gyrus volume	0.0156	3.169	0.003
	Thalamic radiations (FA)	-0.014	-2.44	0.01
	Posterior thalamic radiations (FA)	-0.016	-3.055	0.004
Postsynaptic density	Distress	0.0588	2.618	0.01
	Cingulate lobe surface area	-0.014	-2.812	0.012
	Global surface area	-0.012	-2.498	0.024
Histone H3-K4 methylation	Entorhinal cortex	-0.016	-3.454	0.002

Table 3. Permutation results for gene-set PRS where significant associations were identified (PRS p-value threshold 0.1).

Figure 1. Significant associations between the axon and postsynaptic density gene-set PRSs and clinical phenotypes. X-axis indicates standardised effect sizes; *=significant associations after correction for multiple comparisons; WG = whole-genome.

Figure 2. Significant associations between the axon, postsynaptic density, and histone H3-K4 methylation gene-set PRSs and neuroimaging phenotypes. X-axis indicates standardised effect sizes; *=significant associations after correction for multiple comparisons; WG = whole-genome.

Figure 3. Cortical and white matter microstructure phenotypes that were associated with the axon, PSD, and histone gene-set PRSs. The thalamic radiations tract category, comprised of the anterior, superior, and posterior thalamic radiations, was associated with the axon gene-set PRS; the cingulate lobe, comprised of caudal anterior, rostral anterior, posterior and isthmus cingulate, was associated with PSD gene-set PRSs. Global surface area (i.e. the entire brain's surface area) was also associated with PSD but is not indicated in the graph above.

Voices

Visions

Conspiracies

Communications

Distress

Axon

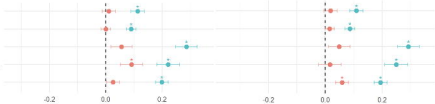
Postsynaptic density

PRS

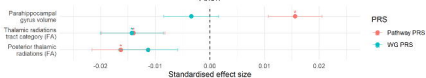
Pathway PRS

WG PRS

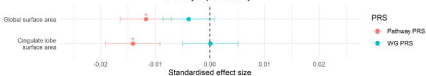
Standardised effect size



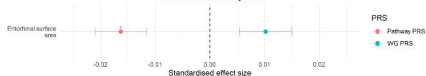
Axon



Postsynaptic density



Histone H3-K4 methylation

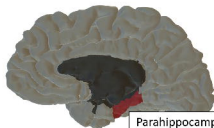


Axon

Postsynaptic density

Histone H3-K4 methylation

Cortical structures



Parahippocampal gyrus

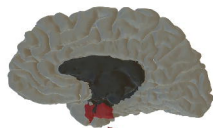


Isthmus cingulate

Posterior cingulate

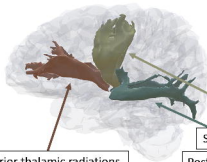
Caudal anterior cingulate

Rostral anterior cingulate



Entorhinal cortex

White matter microstructure



Anterior thalamic radiations

Superior thalamic radiations

Posterior thalamic radiations