

# Changes in presentation, treatment, and survival of patients with hepatocellular carcinoma in Damietta, Egypt, 2007-2019: a retrospective monocentric cohort study

Kévin Jean<sup>†1,2</sup>, Ahmed Tawheed<sup>†3</sup>, Liem Binh Luong Nguye<sup>4</sup>, Tarek Heikal<sup>5</sup>, Usama Eldaly<sup>5</sup>, Neven Elhadidy<sup>6</sup>, Ahmed Elghaieb<sup>7</sup>, Ahmed Aboudonia<sup>7</sup>, Laura Tondeur<sup>1</sup>, Amélie Dublineau<sup>4</sup>, Arnaud Fontanet<sup>‡2,4</sup>, Mohamed El-Kassas<sup>‡3</sup>

<sup>†</sup> co-first authors

<sup>‡</sup> co-last authors

<sup>1</sup> Laboratoire MESuRS, Conservatoire national des arts et métiers, Paris, France; <sup>2</sup> Unité PACRI, Institut Pasteur, Conservatoire national des arts et métiers, Paris, France; <sup>3</sup> Endemic Medicine Department, Faculty of Medicine, Helwan University, Cairo, Egypt; <sup>4</sup> Emerging Diseases Epidemiology Unit, Institut Pasteur, Université Paris-Cité, Paris, France; <sup>5</sup> Medical Oncology Department, Damietta Oncology Center, Damietta, Egypt; <sup>6</sup> Pharmaceutical Services Department, Damietta Oncology Center, Damietta, Egypt; <sup>7</sup> Radiology Department, Damietta Oncology Center, Damietta, Egypt

Correspondence to : Kévin Jean, [kevin.jean@lecnam.net](mailto:kevin.jean@lecnam.net).  
Laboratoire MESuRS, Conservatoire national des arts et métiers,  
292 rue Saint Martin, 75003 Paris, France

**Running title:** Hepatocellular carcinoma in Damietta, Egypt, 2007-2019: a retrospective cohort

**Main text:** 3437 words

**Abstract:** 315 words

**Number of Tables:** 3

**Number of Figures:** 4

**Online Supplementary Materials:** 6

## ABSTRACT

**Context:** We aimed to assess temporal changes in the presentation and survival of patients with hepatocellular carcinoma (HCC) in the northern Egypt region, one of the regions reporting the highest incidence of the disease globally.

**Method:** We conducted a monocentric retrospective study. Patients presenting at the Damietta Oncology referral center between 2007 and 2019 with a diagnosed HCC were eligible. Individual, clinical and tumor characteristics at HCC diagnosis, including the Barcelona Clinic Liver Cancer (BCLC) staging, were retrieved from medical files and patients' final vital status was ascertained by combining various data sources. Patients were divided into 2 groups based on diagnosis period: pre- and post-2014. Survival was analysed based on Kaplan-Meier curves and differences in restricted mean survival time (RMST).

**Results:** Data from 5,097 patients (among 5,210 eligible, 97.8%) were analyzed. We observed a significant trend toward HCC diagnosed at earlier stage in the post- vs. pre-2014 period (BCLC stage 0/A or B: 37.2% vs. 27.1%,  $p < 10^{-3}$ ). Overall patient's survival after the HCC diagnosis was poor, with a median of 8.1 months. The BCLC staging system performed well in predicting survival (median survival for patients diagnosed with BCLC stage 0/A, B, C, and D: 28, 25, 7, and 4 months, respectively,  $p < 10^{-3}$ ). Despite a trend toward HCC diagnosed at earlier stages, we did not observe a significant improvement in survival over time. Overall, treatments offered in this medical center were in line with international guidelines, and 16.1% of the patients who received a curative treatment had an improved survival (30.7 months in median). However, HCC recurrence was frequent among patients cured for HCC, with a median time to recurrence of 22 months.

**Conclusion:** Overall survival after HCC diagnosis in Egypt remains poor but is significantly improved by curative therapy. Despite a trend toward earlier diagnosis of HCC, we did not observe a general improvement in survival over time, which remains to be clearly understood.

Hepatocellular carcinoma (HCC) is the fifth most common cancer globally but occupies the first place among cancers in Egypt [1]. This special situation is primarily explained by the unique scale of the Hepatitis C Virus (HCV) epidemic in the country [2], which has been historically associated with the mass parenteral anti-schistosomal treatment campaigns in the 1960s–70s [3] and more recently with unsafe medical practices [4]. Moreover, the incidence rates for HCC in Egypt show geographical variation matching HCV prevalence, with the highest figures in the northern Delta region compared to the lowest in the southern region [1]. Untreated chronic HCV infection may progress into cirrhosis and liver cancer, for which the prognosis is very poor.

Previous studies documented significant disparities in the survival of patients with HCC according to individual characteristics, such as age, gender, ethnicity, and socioeconomic status [5–7]. HCC etiology may also affect response to treatment and survival [8]. Other conditions, such as metabolic disorders, may affect HCC incidence, but their influence on survival is not clearly established [9]. Better identification of individual prognostic factors among patients with HCC in the specific context of Egypt may provide valuable insight into patients' care and treatment.

Furthermore, recent advances in HCC and HCV treatment may have changed the overall survival of patients with HCC. Tumor staging at the time of diagnosis is critical to estimate patient prognosis and choose between treatment options. Several staging systems for HCC have been developed [10], among which the Barcelona Clinic Liver Cancer (BCLC) has been endorsed by the European Association of the Study of the Liver (EASL) and the American Association of the Study of Liver Diseases (AASLD) [11]. The BCLC staging system has been documented to perform well within a monocentric Egyptian study [12]. Confirming these results in the healthcare center acknowledging the highest incidence of HCC in Egypt may be valuable for the national treatment guidelines [13].

Moreover, the availability of direct-acting antivirals (DAA) through the Egyptian National Treatment Programs has encouraged HCV testing actions (screening for more than 65 million population over 8 months) and the linked HCC screening activities among those infected with HCV, especially cirrhotic patients, over the past years [14,15]. This is expected to have led to earlier HCC diagnosis and better prognosis overall. Additionally, the large number of treated HCV patients in Egypt (more than 4 million) may impact the landscape of HCC in the country. Documenting such trends –if they exist– will encourage further efforts and help assess the remaining benefits that may be expected from expanded HCV testing.

In this monocentric retrospective study, we assessed temporal changes in the presentation and survival of patients presenting with HCC between 1<sup>st</sup> Jan 2007 and 31<sup>st</sup> Dec 2019 in a tertiary specialized oncology referral center in Damietta, northern Egypt.

## METHODS

The Damietta Oncology Center (DOC) is one of the major tertiary specialized oncology referral centers in northern Egypt and serves five large governorates in the Delta region. The Center covers the region with the highest incidence of HCC in Egypt [13]. In 2013, Damietta Oncology Center launched a multidisciplinary HCC unit outfitted with necessary equipment for the planned interventions. A specialized HCC multidisciplinary clinic is responsible for consultations for HCC cases with hepatology, radiology, and surgical oncology consultants. All patients were recruited and diagnosed according to the BCLC guidelines [16]. Baseline demographic, clinical, laboratory and radiological criteria were documented in the patient file. Additionally, the BCLC staging was calculated and documented. Finally, a patient management plan is decided according to the BCLC staging and considering the logistics and availability of various treatment options in the center.

### *Recruitment*

All patients presenting between 1<sup>st</sup> Jan 2007 and 31<sup>st</sup> Dec 2019 at the DOC with a diagnosis of HCC were eligible for the study.

Four trained medical doctors from Damietta Oncology Centre were responsible for the active data collection from the archived medical records of the patients. The study's data manager regularly revised the data collection process. The extracted data were transformed into a unique pre-prepared case report form designed for this study, which included general, tumor-related, imaging, and laboratory data. The case report forms were electronically submitted to a web-based software (REDCap) developed explicitly for online data entry, validity checks, and preparation for data analysis. Death registries in local health governorates were regularly checked for reported deaths of eligible patients. Follow-up phone calls were scheduled for patients who missed their follow-up or those with an unknown situation. Electronic checks were performed using Check Programs. Data entry was done depending on the Hospital Identification Number to prevent duplicates.

### *HCC diagnosis*

The date of HCC diagnosis was determined using non-invasive imaging criteria as described by international recommendations, and BCLC stage was ascertained upon diagnosis [17–19]. HCC etiology was categorized based on hepatologic criteria as HCV, HBV, HBV-HCV coinfection, or non-viral etiology. The presence of anti-HCV determined hepatitis C status; hepatitis B status was determined by the presence of hepatitis B surface antigens.

### *Definition of HCC primary treatment*

HCC primary treatment was defined as the most advanced level of treatment received, categorized herein in decreasing order: surgical liver resection, curative locoregional therapy (radiofrequency or microwave ablation, percutaneous ethanol injection), noncurative locoregional therapy (transarterial chemoembolization), and supportive care only.

### *Final status*

The final vital status and date of last contact or death were ascertained following three steps. First, the medical file was searched for information regarding the date of last contact and notification of death. Patients with date of latest notice <3 months at the date of data collection were considered as alive. For patients with date of latest notice ≥3 months, the Egyptian national Cancer registry was consulted for patients' information, and if occurring, the date of death was retrieved. Third, for patients with no explicit mention of death as per the medical file or cancer registry, the research team tried to contact the patient or patient's next of kin based on contact data in the medical file. The research team attempted contact up to three times at different dates and times to collect information regarding patients' vital status and date of death, if any. Patients with unsuccessful contact procedures were finally considered alive at the latest date appearing in the medical file.

### *HCC recurrence-free survival after curative treatment*

We assessed the HCC recurrence-free survival among patients who received curative therapy (either surgical liver resection or curative locoregional therapy). Among these, we defined recurrence-free

survival as starting at the date of treatment end ending at the recorded date of recurrence or being censored.

### *Statistical analysis*

All eligible patients were included in the statistical analysis provided they had a non-missing date of diagnosis and date of point. Descriptive statistics were reported as percentage for categorical variables and as median with 25<sup>th</sup> and 75<sup>th</sup> percentiles for continuous variables. We used the Chi-2 test to test for changes in the distribution of categorical variables across time period of HCC diagnosis and the Student test for continuous variables. The Kaplan-Meier method was used to plot survival curves, and the log-rank test was used to assess survival difference in univariate analysis. Classical survival analysis based on Cox regression estimates hazard ratio, which is difficult to interpret when the proportional hazards assumption is violated. Moreover, the shortcomings of the hazard ratio are being increasingly recognized [20,21]. We therefor analysed the association between individual characteristics and all-cause mortality using difference in restricted mean survival time (RMST) with 95% confidence intervals (CI) using the *survRM2* R package [22]. In the multivariate analysis, we only included variables that can be assessed upon admission and that are not considered within the BCLC staging system. Presentation with HCC and survival was analysed overall and also while stratifying on the date of HCC diagnosis. The period of HCC diagnosis was categorized into before/after 2014, which corresponds

In the multivariable analysis, we only included variables that can be assessed upon admission and that are not considered within the BCLC staging system. Presentation with HCC and survival was analysed overall and also while stratifying on the date of HCC diagnosis. The period of HCC diagnosis was categorized into before/after 2014, corresponding to the initiation of the national DAA scale-up program [14].

## **RESULTS**

Medical records were retrieved among 5,210 eligible patients having presented at the DOC between 1<sup>st</sup> Jan 2007 and 31<sup>st</sup> Dec 2019, for whom data was collected and vital status ascertained (Supplementary Figure 1). Among these, 5,097 (97.8%) had a non-missing date of diagnosis and date of latest notice and were included in the statistical analysis. The number of patients diagnosed was 178 in 2007 (with one diagnosed in 2005 and 6 diagnosed in 2006), peaked at 654 in 2016 and decreased at 550 in 2018 (Figure 1).

### *Temporal changes in presentation and treatment option*

Table 1 presents patients' general and clinical characteristics, overall and by period of HCC diagnosis. Overall, 5,165 (99.3%) patients were cirrhotic, and only 3 patients (<0.1%) reported any alcohol consumption. Over time, the proportion of patients from urban area with hypertension or diabetes increased; the proportion of patients reporting tobacco consumption or with ascites decreased. The proportion of patients of ECOG performance status from 0 to 2 increased over time (Supplementary Figure 2). Overall, the etiology of HCC was linked to HCV in 91.6% of the patients, linked to HBV in 3.3%, linked to HBV-HCV coinfection in 0.8%, and non-viral in 4.3%, with no significant changes over time (p=0.22). The large majority were diagnosed using CT scan. The number of hepatic focal lesions

did not change significantly over time. The size of the largest HFL tended to decrease, but this variable was affected by a high proportion of missing values. The proportion of patients with distant metastasis tended to decrease over time ( $p=0.092$ ).

Changes in the distribution of BCLC stages at HCC diagnosis over time are presented in Figure 1 and Table 1. Late stage diagnosis decreased over time: BCLC stage D represented 46.7% of the patients before 2005-2013 vs. 29.6% in 2014-2019 ( $p<10^{-3}$ ).

Changes in laboratory values at HCC diagnosis are presented in Supplementary Figure S3. We observed significant decreases over time in alanine aminotransferase (ALT), aspartate aminotransferase (AST), alpha-fetoprotein (AFP) and total bilirubin titers, while albumin, prothrombin, and platelets concentrations increased over time (all  $p<10^{-3}$ ).

Time changes in the treatment option by BCLC stage at diagnosis are displayed in Figure 2. Curative therapies were nearly exclusively decided among patients diagnosed with BCLC stages 0 to D, while patients diagnosed with BCLC stages C or D received almost exclusively noncurative locoregional therapies or supportive care, with no substantial change over time.

### Survival

A total of 4,651 deaths were observed among the 5,097 patients included in the survival analysis (91.2%). Overall, the median survival was 8.1 months (95% confidence interval, CI: 7.8-8.4) after HCC diagnosis. One year survival was 38% overall, and in patients with BCLC stages 0/A, B, C, D, it was 83%, 63%, 30% and 14%, respectively (Table 2). Kaplan-Meier survival curves are displayed in Figure 3, which shows that the proportional hazard assumption is not valid for the “*period of diagnosis*” variable ( $p<10^{-3}$ ), so the Cox regression model was not suitable. BCLC stage at diagnosis was significantly associated with overall survival, so was the type of treatment received (both  $p<10^{-3}$ ). Patients who received a curative treatment (either surgical ablation or curative locoregional therapy) experienced a median survival of 30.7 months (CI: 28.4-32.5). Figure 3 also shows that the period of diagnosis was not associated with overall survival ( $p=0.47$ ), as one could have expected, considering the higher proportion of BCLC stages 0/A or B at diagnosis in the later vs. earlier period. When stratifying on BCLC stage at diagnosis, we observed a significantly higher survival in the 2005-2013 vs. 2014-2019 period among those diagnosed at BCLC stage 0/A ( $p<10^{-3}$ ) and B ( $p=0.029$ ), but not for the stages C or D (Figure S4).

The differences in RMST according to individual and tumor characteristics are presented in Table 3. The multivariable analysis included 4,433 patients (87.0%) with complete information regarding the variables included in the model. Upon-admission factors independently associated with a lower mean survival time were age, tobacco consumption, vascular invasion and distant metastasis (all  $p<10^{-3}$ ). Patients with hypertension had a mean survival superior by 1.36 months (95% CI: 0.37; 2.34) to patients without. Diabetes was not associated with survival ( $p=0.79$ ). HCC diagnosis in 2014-2019 was independently associated with a reduced survival time, with a life expectancy equivalent to 2.59 (95% CI: 1.37; 3.81) months shorter than patients diagnosed in 2005-2013. We observed a strong gradient associating advanced BCLC stage at diagnosis with reduced survival. For instance, those diagnosed at BCLC stage D had a mean survival inferior by 19.23 months (95% CI: -20.50; -17.96) compared to those diagnosed at BCLC stage A. In the stratified analysis, all these associations were consistently observed before and after 2014 (Supplementary Table 1).

### *HCC recurrence free survival*

Among 819 patients (16.1% of the sample) who received a curative therapy (surgical resection: 13.2%; curative locoregional therapy: 86.8%), HCC recurrence was recorded among 451 (55.1%). The median recurrence-free survival was 22.1 months (95% CI: 20.1-25.6) and was not significantly different among those with an initial HCC diagnosis in 2014-2019 vs. 2005-2013 ( $p=0.12$ ) (Figure 4).

## **DISCUSSION**

In this monocentric, retrospective study, we assessed changes in presentation and survival of patients diagnosed with HCC between 2005 and 2019 in a region with a high disease incidence. We observed significant trends over time in individual characteristics at diagnosis, such as older age, a higher proportion of urban patients, a lower proportion of smokers, and higher proportions of metabolic disorders (diabetes, hypertension) in the recent period. Moreover, we observed an important trend toward HCC diagnosed at earlier stages in the recent period. Overall, the patient's survival after the HCC diagnosis was poor, with a median of 8.1 months. The BCLC stage at diagnosis constituted a performant predictor of survival in this patient's population. Despite a trend toward HCC diagnosed at earlier stages, we did not observe a significant improvement of survival over time, which constitutes a challenging observation. Overall, treatments offered in this medical center were in line with international guidelines, and 16.1% of the patients who received a curative treatment presented an improved survival. However, HCC recurrence was frequent among patients cured for HCC, with a median time to recurrence of 22 months.

Several temporal trends and consistencies have been observed in the presentation of a patient diagnosed with HCC during the period covered by the study. The etiology of HCC remained largely driven by HCV (>90%). This predominant etiology and the history of the Egyptian HCV epidemic linked to anti-schistosomal control activities in the 1960s–70s also explain the shift toward older age at HCC diagnosis. Trends toward more frequent metabolic disorders, mainly diabetes and hypertension, is likely linked to global trends in overweight, one of their main risk factors, which has been reported in Northern Africa as in most regions in the world over the past decades [23]. One of our main observations within this cohort is the significant trend toward earlier diagnosed HCC during the recent period (2014-2019). This trend has to be related to the 2014 initiation of the national DAA scale-up program, which resulted in a dramatic increase of DAA-treated patients from 45,000 in 2014 to 577,000 in 2016 [24]. Within the Egyptian HCV model of care, treated cirrhotic patients are regularly monitored for detection of complications of cirrhosis or HCC, which may have contributed to such a trend toward earlier diagnosis [14]. However, even in the recent period, nearly one third of the patients were diagnosed at a terminal stage of the disease (BCLC stage D), with no treatment option beyond best supportive care. This highlights the remaining efforts for HCC surveillance.

Overall, in this retrospective cohort, we document an 8.1-months median survival after HCC diagnosis, which appears lower than previously reported in Egyptian studies. Gomaa et al. documented a median survival of 15 months in 2010-2012 [12], and Waziry et al estimated the median survival following HCC at 22.8 months in 2013-2014 [24]. However, both studies were conducted at the National Liver Institute in Menoufiya, one of the largest centers for the treatment of HCV infection, among which patients were diagnosed at earlier BCLC stage as compared to our study (BCLC stage 0/A: 25% and 56%, respectively as compared to the 17% reported here).

In our study sample, the BCLC staging system performed remarkably well in estimating patient prognosis. Indeed, the BCLC stage at diagnostic was the most discriminating independent factor

predicting survival. It exhibited a strong gradient, ranging from a median survival of 28 months for BCLC stages 0/A to 4 months for stage D. However, as compared to those reported in high-income countries, the BCLC stage-specific survival we document here was slightly lower (for instance: 7 months for BCLC stage C here vs. >1 year reported in [16]).

The multivariable survival analysis revealed several independent prognostic factors after HCC diagnosis. Tobacco consumption has long been identified as a risk factor for HCC incidence, but its independent association with mortality after HCC diagnosis has not been consistently reported in previous study, probably due to small sample sizes [12,14,25]. The strong statistical power allowed by our large sample size may explain that we could report an independent association between tobacco consumption and mortality after HCC diagnosis, even if the effect size is small (mean survival reduced by 1.6 months) and only opens modest perspectives for secondary prevention. We did not observe an independent association between diabetes and the evolution of HCC, in line with previous evidence [9]. However, we observed a significant, though modest, better prognosis among patients with baseline hypertension (mean survival improved by 1.5 months), contradicting the results observed European patients [9]. The biological plausibility of hypertension as a favorable prognostic factor for survival after HCC diagnosis remains questionable though, and might be better explicated by a differential, potentially improved, follow-up of patients with hypertension. In line with previous evidence, we did not report any difference in the prognosis based on the etiology of HCC [16,26].

Despite a trend toward earlier diagnosis of HCC in our population study, we did not observe an overall improvement in survival over time. Indeed, independently of the prognostic and risk factors discussed above, the later period of diagnosis (2014-2019) was associated with a mean survival reduced by 2.3 months compared to the earlier period. Our analysis stratified by BCLC stage at diagnosis revealed that this poorer survival in the recent period was driven by a poorer survival among patients diagnosed at BCLC stage 0/A (and more modestly by patients diagnosed at stage B), while survival among patients at advanced or terminal stage of the disease remained comparable across periods (Supplementary figure 4). This results suggest that the distribution of one or several risk factor for survival after HCC diagnoses, which were not collected in our study, may have changed over time.

We acknowledge several limitations to these results. Principally, the monocentric nature of our study may limit the generalisability of our results beyond the catchment population of the Damietta referral center. We relied on retrospective data collection based on medical file, for which the degree of completion varied over time. For instance, etiology of HCC was more frequently unknown in the pre- vs. post-2014 period. However, we relied on criteria ensuring specific eligibility of patients over the study period, and final inclusion rate in the analysis was high (97.8%), reducing the risk of a possible inclusion bias.

Moreover, in the time-to-event analysis, the event was documented among >90% of patients, thus limiting the risk of bias due to informative censoring [27]. Furthermore, with more than 5,000 inclusions, this is the most extensive study conducted in Egypt to estimate the survival of patients following HCC diagnosis. We measured correlates of mortality using RMST difference, which interpretation is more intuitive than hazard ratios. It is increasingly recognized that hazard ratios from Cox proportional hazards models represent a potential threat to causal inference, even in the absence of unmeasured confounding, measurement error, and model misspecification [28]. HCC remains one of the significant causes of malignancy in Egypt. The perspectives of novel promising treatment strategies are limited [16], and timely diagnosis is key to ensuring the best treatment strategy under the available options. The present study documents the progress toward earlier HCC



diagnoses made in Egypt since 2014 and the opportunity that the DAA strategy has generated. In the meantime, with more than half of the patients diagnosed at an advance or terminal stage of the disease in the latest years, the current study also weights the remaining efforts to ensure the optimal benefits of HCC care and treatment.

### ***Ethical clearance***

This study received approval from the Research Ethics Committee for Human Subject Research at Air Force Specialized Hospital and from the Egyptian Ministry of Health on 31st Jul 2019 and on October, 9th 2019 respectively.

### ***Funding***

This research has been funded by the Pasteur Foundation (grant number...). The funders had no role in study design, data collection, data analysis, data interpretation, or writing of the article.

### ***Declaration of interests***

We declare no competing interests.

### ***Author contribution***

KJ, AT, LBLN, AF and MEK designed the study. AF obtained funding; provided clinical management to patients and collected the patient data. AT and MEK ensured fieldwork coordination. KJ and LT ensured data curation. KJ performed the statistical analysis. KJ drafted the manuscript. All authors approved the final version of this article, including the authorship list.

### ***Data availability***

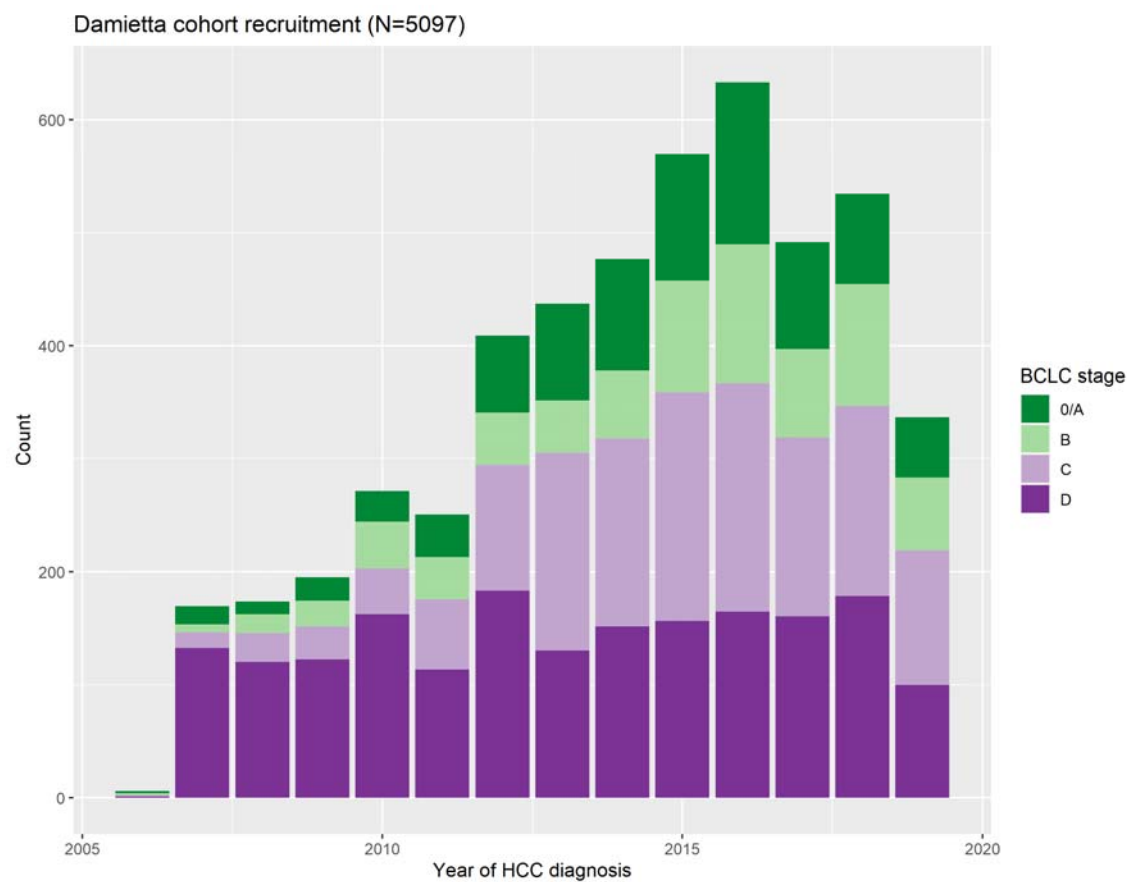
Data related to this study is available upon a reasonable request through an email to the corresponding author

## REFERENCES

1. Ibrahim AS, Khaled HM, Mikhail NN, Baraka H, Kamel H. Cancer incidence in egypt: results of the national population-based cancer registry program. *J Cancer Epidemiol.* 2014;2014: 437971. doi:10.1155/2014/437971
2. Kandeel A, Genedy M, El-Refai S, Funk AL, Fontanet A, Talaat M. The prevalence of hepatitis C virus infection in Egypt 2015: implications for future policy on prevention and treatment. *Liver Int.* 2017;37: 45–53. doi:10.1111/liv.13186
3. Frank C, Mohamed MK, Strickland GT, Lavanchy D, Arthur RR, Magder LS, et al. The role of parenteral antischistosomal therapy in the spread of hepatitis C virus in Egypt. *Lancet.* 2000;355: 887–891.
4. Arafa N, El Hoseiny M, Rekacewicz C, Bakr I, El-Kafrawy S, El Daly M, et al. Changing pattern of hepatitis C virus spread in rural areas of Egypt. *J Hepatol.* 2005;43: 418–424. doi:10.1016/j.jhep.2005.03.021
5. Ghouri YA, Mian I, Rowe JH. Review of hepatocellular carcinoma: Epidemiology, etiology, and carcinogenesis. *J Carcinog.* 2017;16: 1. doi:10.4103/jcar.JCar\_9\_16
6. Artinyan A, Mailey B, Sanchez-Luege N, Khalili J, Sun C-L, Bhatia S, et al. Race, ethnicity, and socioeconomic status influence the survival of patients with hepatocellular carcinoma in the United States. *Cancer.* 2010;116: 1367–1377. doi:10.1002/cncr.24817
7. Ha J, Yan M, Aguilar M, Bhuket T, Tana MM, Liu B, et al. Race/ethnicity-specific disparities in cancer incidence, burden of disease, and overall survival among patients with hepatocellular carcinoma in the United States. *Cancer.* 2016;122: 2512–2523. doi:10.1002/cncr.30103
8. Kao W-Y, Su C-W, Chau G-Y, Lui W-Y, Wu C-W, Wu J-C. A comparison of prognosis between patients with hepatitis B and C virus-related hepatocellular carcinoma undergoing resection surgery. *World J Surg.* 2011;35: 858–867. doi:10.1007/s00268-010-0928-z
9. Morisco F, Guarino M, Valvano MR, Auriemma F, Farinati F, Giannini EG, et al. Metabolic disorders across hepatocellular carcinoma in Italy. *Liver Int.* 2018. doi:10.1111/liv.13877
10. Grieco A, Pompili M, Caminiti G, Miele L, Covino M, Alfei B, et al. Prognostic factors for survival in patients with early-intermediate hepatocellular carcinoma undergoing non-surgical therapy: comparison of Okuda, CLIP, and BCLC staging systems in a single Italian centre. *Gut.* 2005;54: 411–418. doi:10.1136/gut.2004.048124
11. Bruix J, Reig M, Sherman M. Evidence-Based Diagnosis, Staging, and Treatment of Patients With Hepatocellular Carcinoma. *Gastroenterology.* 2016;150: 835–853. doi:10.1053/j.gastro.2015.12.041
12. Gomaa AI, Hashim MS, Waked I. Comparing Staging Systems for Predicting Prognosis and Survival in Patients with Hepatocellular Carcinoma in Egypt. *PLOS ONE.* 2014;9: e90929. doi:10.1371/journal.pone.0090929
13. National Cancer Registry Program of Egypt (NCRPE). Reports and Statistics - Damietta, 2012. Available: <http://cancerregistry.gov.eg/>

14. El-Akel W, El-Sayed MH, El Kassas M, El-Serafy M, Khairy M, Elsaed K, et al. National treatment programme of hepatitis C in Egypt: Hepatitis C virus model of care. *J Viral Hepat.* 2017;24: 262–267. doi:10.1111/jvh.12668
15. Esmat G, Elbaz T, Elsharkawy A, Abdullah M, El Kassas M. Emerging from the screening of 57 million citizens and treating 4 million patients: future strategies to eliminate hepatitis C from Egypt. *Expert Review of Anti-infective Therapy.* 2020;18: 637–642. doi:10.1080/14787210.2020.1758065
16. Forner A, Reig M, Bruix J. Hepatocellular carcinoma. *Lancet.* 2018;391: 1301–1314. doi:10.1016/S0140-6736(18)30010-2
17. European Association for the Study of the Liver. Electronic address: easloffice@easloffice.eu, European Association for the Study of the Liver. EASL Clinical Practice Guidelines: Management of hepatocellular carcinoma. *J Hepatol.* 2018;69: 182–236. doi:10.1016/j.jhep.2018.03.019
18. Marrero JA, Kulik LM, Sirlin CB, Zhu AX, Finn RS, Abecassis MM, et al. Diagnosis, Staging, and Management of Hepatocellular Carcinoma: 2018 Practice Guidance by the American Association for the Study of Liver Diseases. *Hepatology.* 2018;68: 723–750. doi:10.1002/hep.29913
19. Reig M, Forner A, Rimola J, Ferrer-Fàbrega J, Burrel M, Garcia-Criado Á, et al. BCLC strategy for prognosis prediction and treatment recommendation: The 2022 update. *Journal of Hepatology.* 2022;76: 681–693. doi:10.1016/j.jhep.2021.11.018
20. Uno H, Claggett B, Tian L, Inoue E, Gallo P, Miyata T, et al. Moving beyond the hazard ratio in quantifying the between-group difference in survival analysis. *J Clin Oncol.* 2014;32: 2380–2385. doi:10.1200/JCO.2014.55.2208
21. Stensrud MJ, Røysland K, Ryalen PC. On null hypotheses in survival analysis. *Biometrics.* 2019;75: 1276–1287. doi:10.1111/biom.13102
22. Royston P, Parmar MKB. Restricted mean survival time: an alternative to the hazard ratio for the design and analysis of randomized trials with a time-to-event outcome. *BMC Med Res Methodol.* 2013;13: 152. doi:10.1186/1471-2288-13-152
23. Abarca-Gómez L, Abdeen ZA, Hamid ZA, Abu-Rmeileh NM, Acosta-Cazares B, Acuin C, et al. Worldwide trends in body-mass index, underweight, overweight, and obesity from 1975 to 2016: a pooled analysis of 2416 population-based measurement studies in 128·9 million children, adolescents, and adults. *The Lancet.* 2017;390: 2627–2642. doi:10.1016/S0140-6736(17)32129-3
24. Waziry R, Gomaa A, Waked I, Dore GJ. Determinants of survival following hepatocellular carcinoma in Egyptian patients with untreated chronic HCV infection in the pre-DAA era. *Arab J Gastroenterol.* 2018;19: 26–32. doi:10.1016/j.ajg.2018.02.004
25. Sarveazad A, Agah S, Babahajian A, Amini N, Bahardoust M. Predictors of 5 year survival rate in hepatocellular carcinoma patients. *J Res Med Sci.* 2019;24: 86. doi:10.4103/jrms.JRMS\_1017\_18
26. Bruix J, Cheng A-L, Meinhardt G, Nakajima K, De Sanctis Y, Llovet J. Prognostic factors and predictors of sorafenib benefit in patients with hepatocellular carcinoma: Analysis of two phase III studies. *J Hepatol.* 2017;67: 999–1008. doi:10.1016/j.jhep.2017.06.026

27. Ranganathan P, Pramesh CS. Censoring in survival analysis: Potential for bias. *Perspect Clin Res.* 2012;3: 40. doi:10.4103/2229-3485.92307
28. Lambert PC, Royston P. Further Development of Flexible Parametric Models for Survival Analysis. *The Stata Journal.* 2009;9: 265–290. doi:10.1177/1536867X0900900206



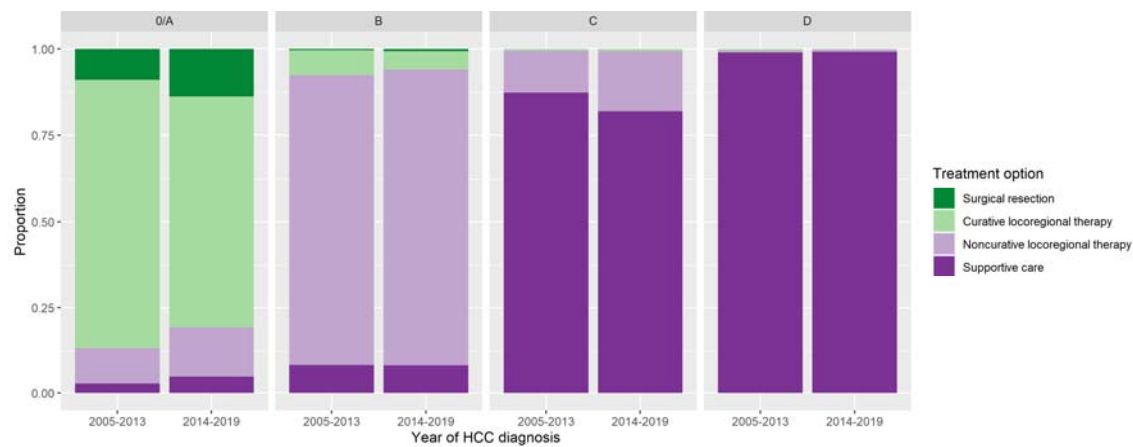
**Figure 1:** Distribution of BCLC stage at HCC diagnosis, by year of diagnosis.

**Table 1 :** Temporal changes in patients' general, clinical, and tumor characteristics at HCC diagnosis.

		Year of HCC diagnosis			
		Overall	2005-2013	2014-2019	
		N = 5,097	N = 2,465	N = 2,632	P-value
General characteristics					
Sex	Male	3947 (77.4%)	1929 (78.3%)	2018 (76.7%)	0.1764
	Female	1150 (22.6%)	536 (21.7%)	614 (23.3%)	
Area of residence	Urban	1284 (25.2%)	544 (22.1%)	740 (28.1%)	<10 <sup>-3</sup>
	Rural	3809 (74.8%)	1920 (77.9%)	1889 (71.9%)	
	NA	4	1	3	
Age at 1st visit in DOC	Median [Q25-Q75]	61 [55-67]	59 [53-66]	62 [56-67]	<10 <sup>-3</sup>
	NA	4	2	2	
Tobacco consumption	No	3316 (65.2%)	1486 (60.4%)	1830 (69.7%)	<10 <sup>-3</sup>
	Yes	1769 (34.8%)	973 (39.6%)	796 (30.3%)	
	NA	12	6	6	
Clinical characteristics					
Hypertension	No	3850 (76.4%)	1970 (81.2%)	1880 (72.1%)	<10 <sup>-3</sup>
	Yes	1186 (23.6%)	457 (18.8%)	729 (27.9%)	
	NA	61	38	23	
Diabetes	No	3721 (73.9%)	1882 (77.6%)	1839 (70.4%)	<10 <sup>-3</sup>
	Yes	1316 (26.1%)	544 (22.4%)	772 (29.6%)	
	NA	60	39	21	
History of gastroesophageal varices	No	3937 (83.0%)	1952 (83.2%)	1985 (82.8%)	0.6939
	Yes	805 (17.0%)	393 (16.8%)	412 (17.2%)	
	NA	355	120	235	
Ascites	No	2983 (58.7%)	1366 (55.5%)	1617 (61.7%)	<10 <sup>-3</sup>
	Yes	2098 (41.3%)	1094 (44.5%)	1004 (38.3%)	
	NA	16	5	11	
Encephalopathy	No	4741 (93.7%)	2302 (94.0%)	2439 (93.4%)	0.4211
	Yes	318 ( 6.3%)	147 ( 6.0%)	171 ( 6.6%)	
	NA	38	16	22	
Etiology	HCV	4317 (91.6%)	1981 (91.5%)	2336 (91.6%)	0.224
	HBV	154 ( 3.3%)	80 ( 3.7%)	74 ( 2.9%)	
	HCV-HBV coinfection	40 ( 0.8%)	20 ( 0.9%)	20 ( 0.8%)	
	Non-viral etiology	204 ( 4.3%)	84 ( 3.9%)	120 ( 4.7%)	
	NA	382	300	82	

**Table 1 (continued):** Temporal changes in patients' general, clinical and tumor characteristics at HCC diagnosis.

		Year of HCC diagnosis			P-value
		Overall N = 5,097	2005-2013 N = 2465	2014-2019 N = 2632	
<b>Imaging system used</b>	CT Scan	4892 (96.0%)	2362 (95.8%)	2530 (96.1%)	<10 <sup>-3</sup>
	MRI	109 ( 2.1%)	57 ( 2.3%)	52 ( 2.0%)	
	Both	51 ( 1.0%)	6 ( 0.2%)	45 ( 1.7%)	
	NA	45 ( 0.9%)	40 ( 1.6%)	5 ( 0.2%)	
<b>Hepatic focal lesion (HFL) number</b>					0.2744
	1	2244 (45.4%)	1061 (44.4%)	1183 (46.3%)	
	2	602 (12.2%)	284 (11.9%)	318 (12.4%)	
	3	120 ( 2.4%)	65 ( 2.7%)	55 ( 2.2%)	
	>3 (multifocal)	1979 (40.0%)	978 (41.0%)	1001 (39.1%)	
	NA	NA: 152	77	75	
<b>Largest HFL (cm)</b>	Median [Q25-Q75]	5 [3-7.5]	5.60 [3.50-8.00]	5.00 [3.00-7.00]	<10 <sup>-3</sup>
	NA	2472	1082	1390	
<b>Vascular invasion</b>	No	3811 (75.9%)	1834 (75.5%)	1977 (76.3%)	0.5094
	Yes	1207 (24.1%)	594 (24.5%)	613 (23.7%)	
	NA	79	37	42	
<b>Distant metastasis</b>	No	4092 (81.9%)	1960 (81.0%)	2132 (82.8%)	0.0918
	Yes	902 (18.1%)	460 (19.0%)	442 (17.2%)	
	NA	103	45	58	
<b>BCLC stage at diagnosis</b>	O/A	848 (17.1%)	366 (15.3%)	482 (18.8%)	<10 <sup>-3</sup>
	B	754 (15.2%)	282 (11.8%)	472 (18.4%)	
	C	1478 (29.8%)	625 (26.2%)	853 (33.3%)	
	D	1872 (37.8%)	1114 (46.7%)	758 (29.6%)	
	NA	145	78	67	

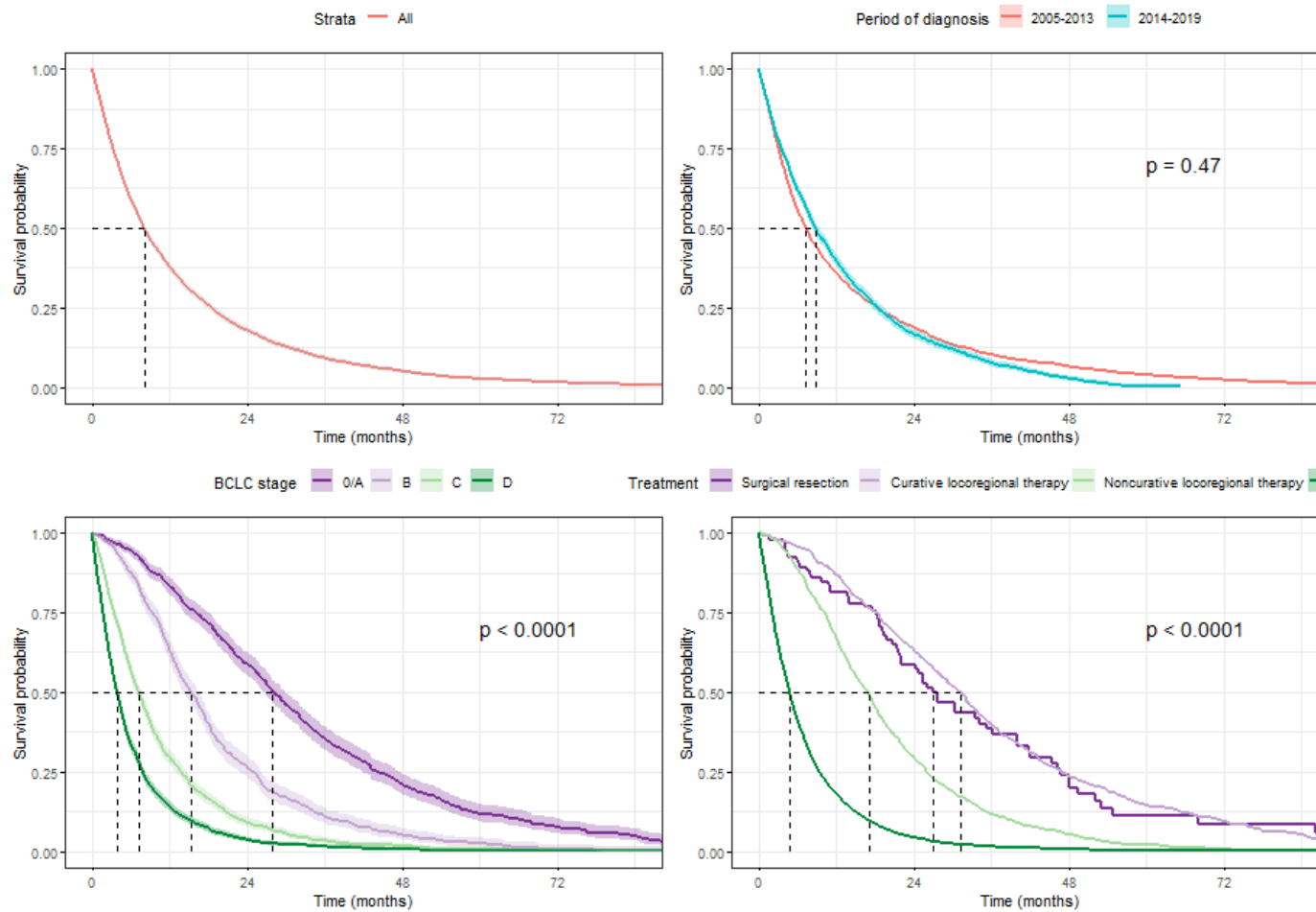


**Figure 2:** Distribution of treatment option by year of HCC diagnosis and BCLC stage at HCC diagnosis.

**Table 2:** Median and 6- to 24-months survival overall and by sub-groups.

	Median survival, months (95% CI)	6-month survival (95% CI)	12-month survival (95% CI)	24-month survival (95% CI)
<b>All</b>	8.1 (7.8-8.4)	59% (58-61)	38% (37-39)	18% (17-19)
<b>Year of HCC diagnosis</b>				
2005-2013	7.3 (6.9-7.8)	56% (54-58)	36% (34-38)	19% (18-21)
2014-2019	8.8 (8.4-9.3)	62% (60-64)	40% (38-42)	17% (15-18)
<b>BCLC stage at diagnosis</b>				
O/A	28.0 (26.7-29.9)	94% (93-96)	83% (81-86)	59% (56-63)
B	15.3 (14.2-16.4)	88% (85-90)	63% (60-67)	27% (24-30)
C	7.2 ( 6.8- 7.8)	57% (55-60)	30% (27-32)	9% (8-11)
D	4.0 ( 3.6- 4.2)	34% (32-36)	14% (13-16)	4% (3-5)
<b>Etiology</b>				
HCV	8.2 (7.8- 8.6)	59% (58-61)	38% (36-39)	17% (16-19)
HBV	6.0 (4.3- 8.3)	49% (41-57)	33% (26-41)	19% (14-27)
HBV-HCV	7.2 (4.6-10.2)	55% (42-74)	26% (15-45)	12% (5-29)
Non-viral etiology	6.2 (4.4- 8.4)	51% (44-58)	35% (29-43)	15% (10-21)
<b>Treatment option</b>				
Ablation	31.4 (29.2-33.4)	96% (94-97)	87% (84-89)	64% (60-68)
Surgical resection	27.6 (22.1-40.0)	91% (85-97)	81% (73-90)	59% (49-71)
TACE	17.1 (15.8-17.8)	89% (87-91)	67% (64-70)	30% (27-33)
Supportive care	4.7 ( 4.6- 5.0)	41% (39-43)	18% (17-19)	4% (4-5)
Multiple treatment	11.1 ( 9.1-15.5)	72% (65-79)	47% (40-56)	22% (16-30)
None/Other/Unknown	7.2 ( 5.5- 8.0)	55% (49-62)	25% (20-32)	9% (6-14)

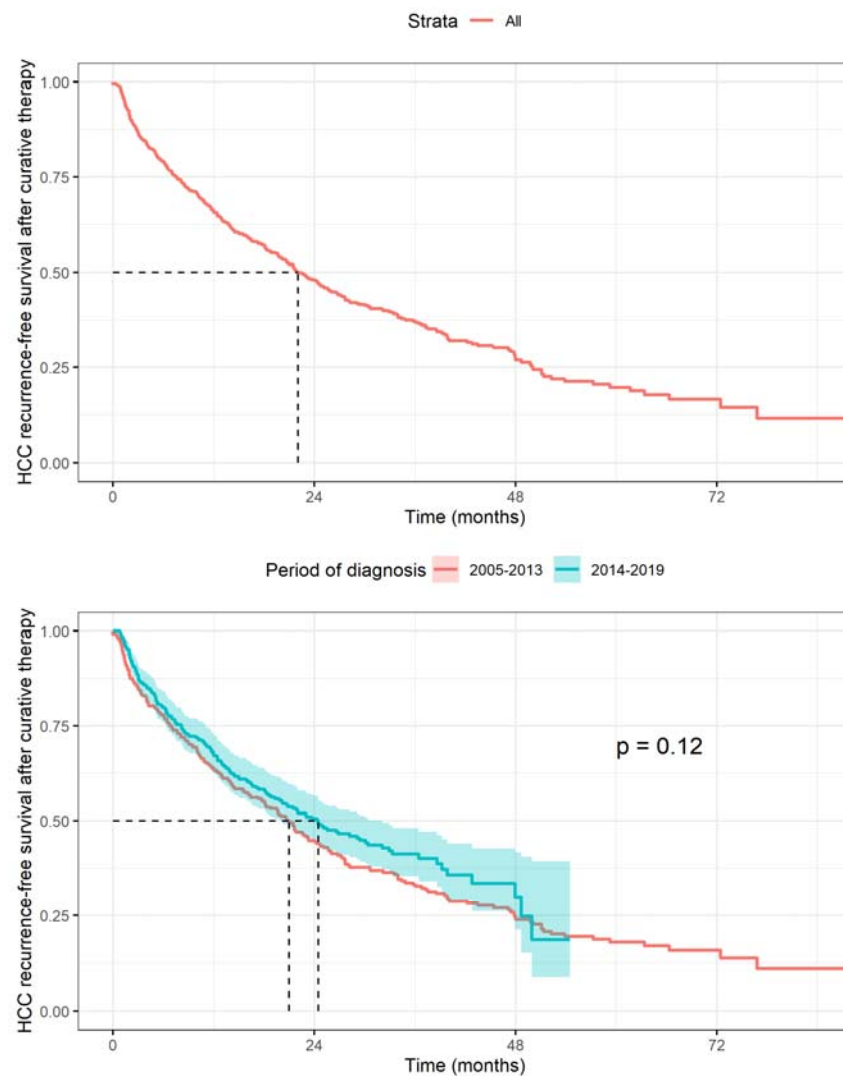




**Figure 3:** Kaplan-Meier survival curves: for the whole studied population (A), by period of diagnosis (B), by BCLC stage at HCC diagnosis (C), by treatment option (D). P-value computed using the log-rank test.

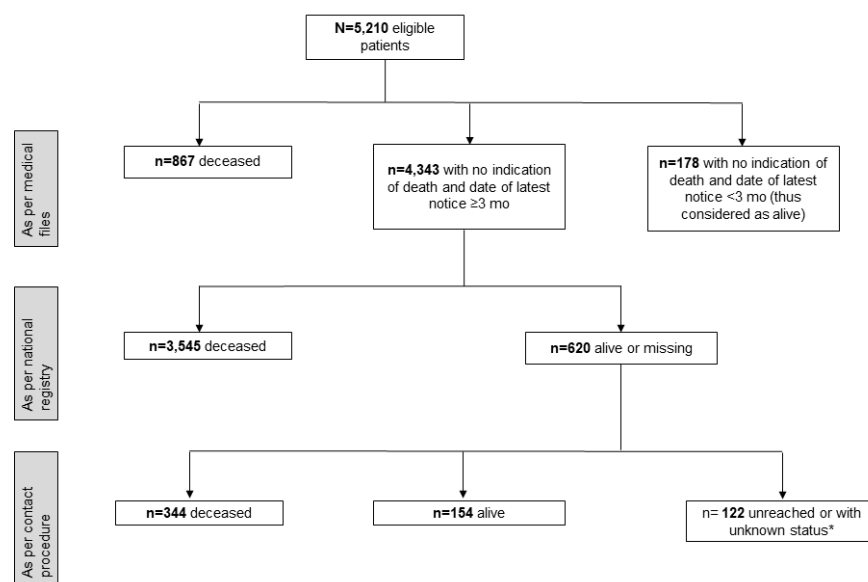
**Table 3** : Association between mortality and general, clinical and tumor characteristics. RMST : Restricted mean survival time.

		Crude RMST	p	Adjusted RMST	p
<b>Sex</b>	Men	ref.		ref.	
	Women	2.54 ( 1.09; 3.99)	$<10^{-3}$	-0.33 ( -1.23; 0.57)	0.4699
<b>Area of residence</b>	Urban	ref.		ref.	
	Rural	-1.04 ( -2.42; 0.35)	0.1413	-0.36 ( -1.15; 0.44)	0.3803
<b>Age</b>	(per 10y. increase)	-1.96 ( -2.41; -1.51)	$<10^{-3}$	-0.97 ( -1.37; -0.57)	$<10^{-3}$
<b>Period of HCC diagnosis</b>	2005-2013	ref.		ref.	
	2014-2019	-0.04 ( -0.78; 0.71)	0.9257	-2.30 ( -3.02; -1.57)	$<10^{-3}$
<b>Tobacco consumption</b>	No	ref.		ref.	
	Yes	-3.96 ( -5.02; -2.90)	$<10^{-3}$	-1.62 ( -2.37; -0.87)	$<10^{-3}$
<b>Hypertension</b>	No	ref.		ref.	
	Yes	2.92 ( 1.36; 4.47)	$<10^{-3}$	1.51 ( 0.60; 2.42)	0.0012
<b>Diabetes</b>	No	ref.		ref.	
	Yes	2.18 ( 0.77; 3.58)	0.0025	0.11 ( -0.69; 0.92)	0.7868
<b>Etiology</b>	HCV	ref.		ref.	
	HBV	-0.71 ( -3.79; 2.38)	0.6534	-0.18 ( -2.19; 1.84)	0.8628
	HBV-HCV	-1.06 ( -7.40; 5.28)	0.7442	0.99 ( -2.67; 4.65)	0.5968
	non-viral	-1.59 ( -4.32; 1.15)	0.2552	-1.08 ( -2.65; 0.50)	0.1794
<b>Vascular invasion</b>	No	ref.		ref.	
	Yes	-7.64 ( -8.59; -6.68)	$<10^{-3}$	-2.28 ( -2.97; -1.59)	$<10^{-3}$
<b>Distant metastasis</b>	No	ref.		ref.	
	Yes	-7.90 ( -8.83; -6.96)	$<10^{-3}$	-2.03 ( -2.75; -1.31)	$<10^{-3}$
<b>BCLC stage at diagnosis</b>	O/A	ref.		ref.	
	B	-7.78 ( -9.51; -6.04)	$<10^{-3}$	-8.60 ( -10.10; -7.10)	$<10^{-3}$
	C	-14.52 ( -16.18; -12.86)	$<10^{-3}$	-15.77 ( -17.06; -14.48)	$<10^{-3}$
	D	-19.25 ( -20.79; -17.72)	$<10^{-3}$	-19.23 ( -20.50; -17.96)	$<10^{-3}$

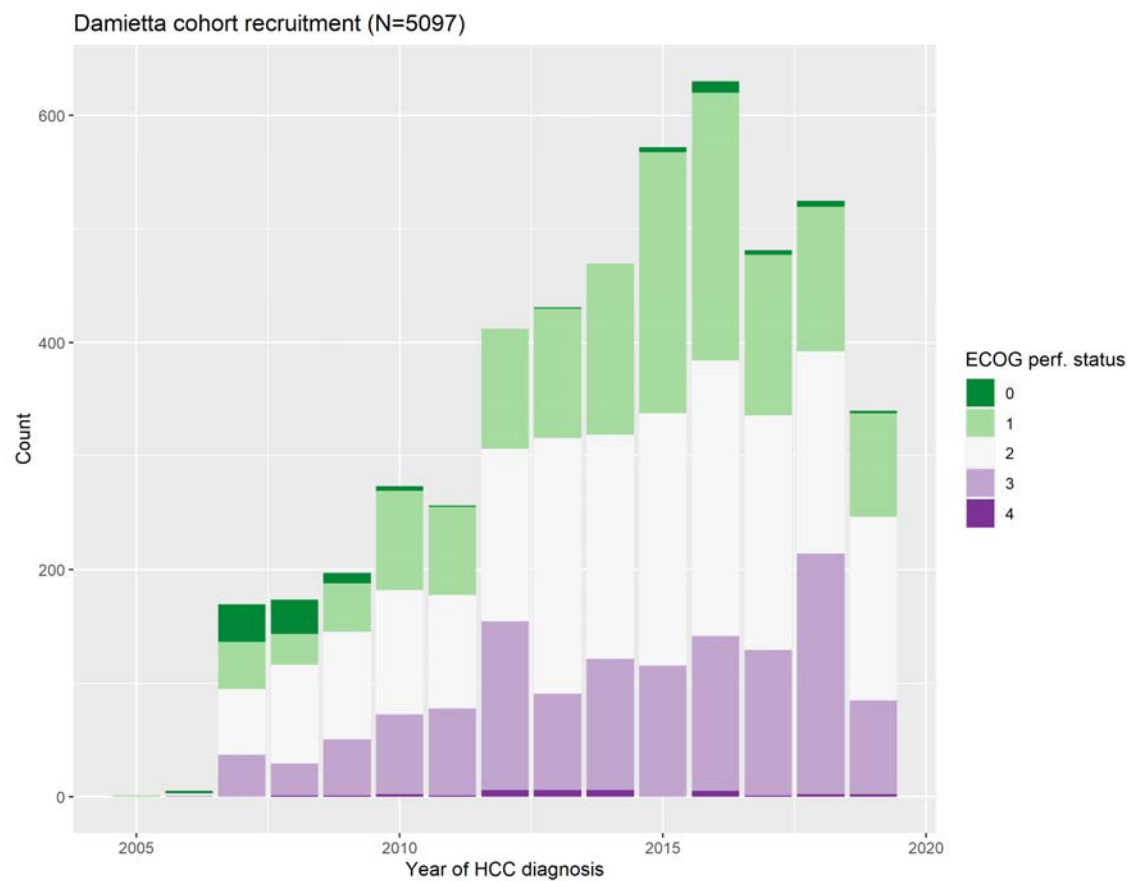


**Figure 4:** Kaplan-Meier curves for HCC recurrence-free survival after curative therapy, overall (top) and by period of diagnosis (bottom). P-value computed using the log-rank test

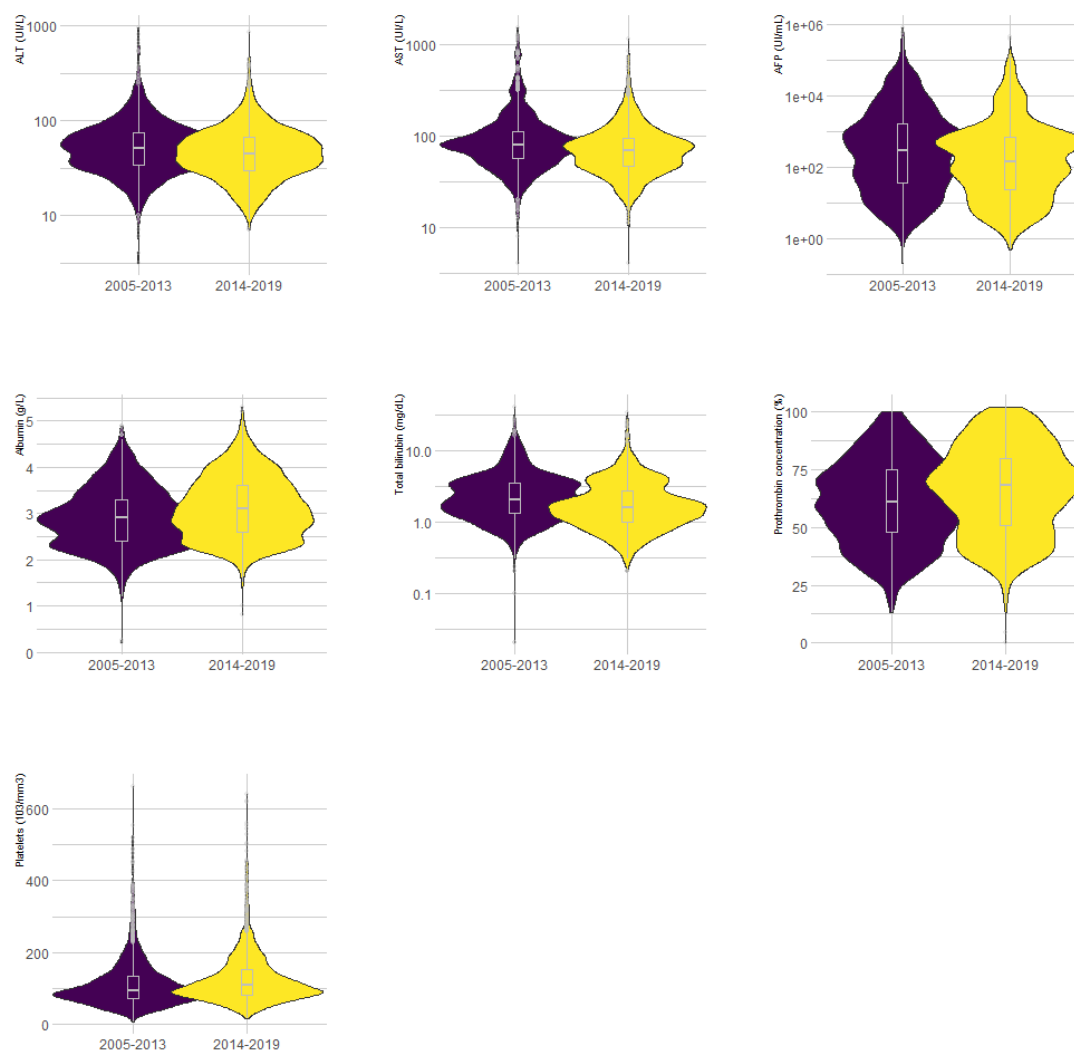
## SUPPLEMENTARY MATERIAL



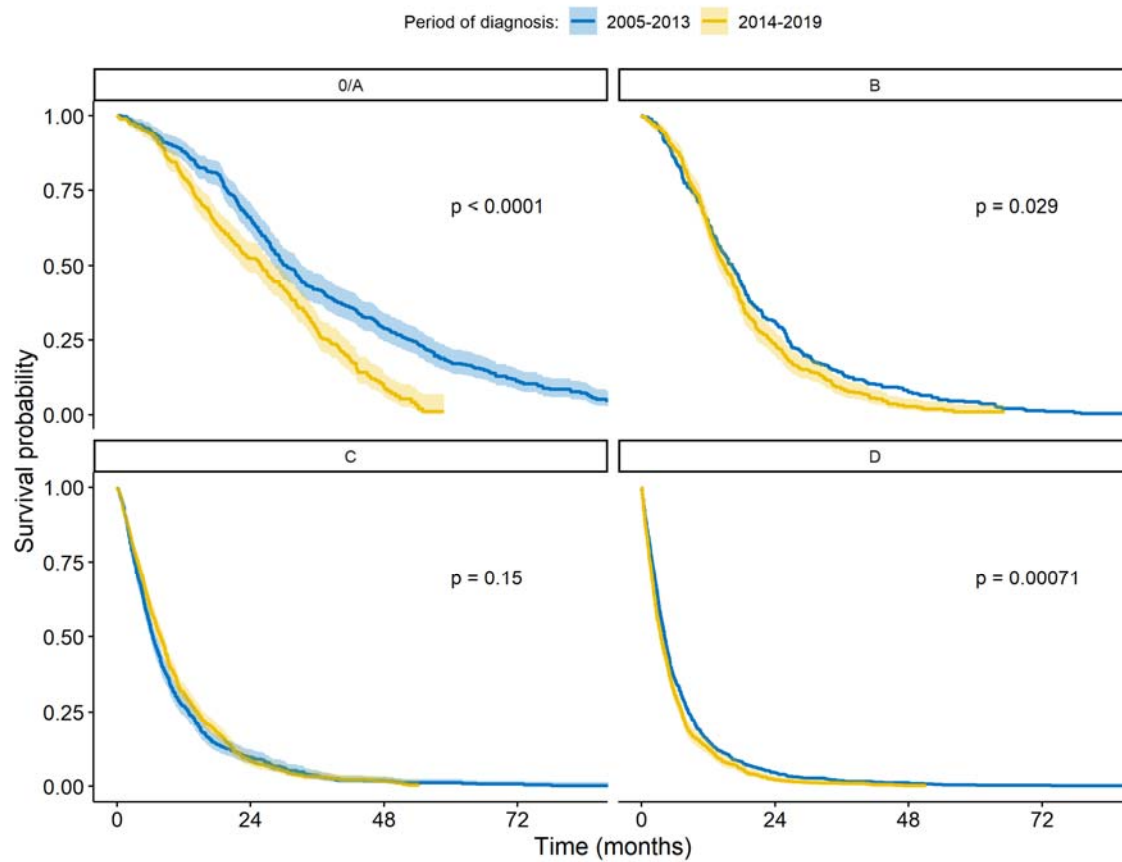
**Supplementary Figure 1:** Flowchart of vital status ascertainment.



**Supplementary Figure 2:** Distribution of ECOG performance status at HCC diagnosis, by year of diagnosis.



**Supplementary figure 3:** Temporal changes in laboratory values at time of HCC diagnosis (all Student test p-values  $<10^{-3}$ ).



Supplementary Figure 4: Survival per time period and BCLC stage at HCC diagnosis.

**Supplementary Table 1:** Association between mortality and general, clinical and tumor characteristics, stratified on the period of HCC diagnosis.

		Multivariate RMST			
		Diagnosed before 2013		Diagnosed after 2014	
		Difference in RMST, months (95% CI)		Difference in RMST, months (95% CI)	
		p		p	
<b>Sex</b>	Men	ref.		ref.	
	Women	-0.54 ( -1.84; 0.76)	0.4171	0.01 ( -1.25; 1.26)	0.9925
<b>Area of residence</b>	Urban	ref.		ref.	
	Rural	-0.57 ( -1.74; 0.61)	0.3425	-0.14 ( -1.25; 0.96)	0.7991
<b>Age at diagnostic</b>	10y.				
	Increase	-0.87 ( -1.37; -0.36)	0.0007	-1.04 ( -1.69; -0.40)	0.0016
<b>Tobacco consumption</b>	No	ref.		ref.	
	Yes	-1.01 ( -2.06; 0.04)	0.0587	-2.09 ( -3.18; -1.00)	0.0002
<b>Hypertension</b>	No	ref.		ref.	
	Yes	1.28 ( -0.12; 2.68)	0.0721	1.82 ( 0.57; 3.07)	0.0043
<b>Diabetes</b>	No	ref.		ref.	
	Yes	0.26 ( -0.92; 1.43)	0.6673	-0.22 ( -1.38; 0.95)	0.7147
<b>Etiology</b>	HCV	ref.		ref.	
	HBV	-0.34 ( -3.03; 2.34)	0.8024	0.01 ( -3.22; 3.24)	0.9955
	HBV-HCV	1.87 ( -2.87; 6.60)	0.4398	-0.53 ( -5.06; 3.99)	0.817
	non-viral	-1.16 ( -3.34; 1.01)	0.2938	-0.78 ( -3.33; 1.76)	0.5464
<b>Vascular invasion</b>	No	ref.		ref.	
	Yes	-1.93 ( -2.85; -1.01)	0	-2.88 ( -3.91; -1.85)	0
<b>Distant metastasis</b>	No	ref.		ref.	
	Yes	-2.01 ( -2.94; -1.08)	0	-2.12 ( -3.29; -0.94)	0.0004
<b>BCLC stage at diagnosis</b>	O/A	ref.		ref.	
	B	-11.51 (-13.97; -9.06)	0	-5.84 ( -7.83; -3.85)	0
	C	-19.84 (-21.85;-17.82)	0	-12.16 (-13.92;-10.39)	0
	D	-22.49 (-24.38;-20.61)	0	-15.78 (-17.56;-13.99)	0