

# COVID-19 induced birth sex ratio changes in

## England and Wales

Gwinyai Masukume<sup>1,\*</sup>, Margaret Ryan<sup>2</sup>, Rumbidzai Masukume<sup>3</sup>, Dorota Zammit<sup>4</sup>, Victor Grech<sup>5</sup>, Witness Mapanga<sup>6,7</sup>, Yosuke Inoue<sup>8</sup>

<sup>1</sup>Independent Researcher, Munster, Ireland

<sup>2</sup>Trinity College Dublin, Dublin, Ireland

<sup>3</sup>Department of Obstetrics and Gynaecology, Faculty of Health Sciences, University of the Witwatersrand, Johannesburg, South Africa

<sup>4</sup>National Statistics Office, Valletta, Malta

<sup>5</sup>Academic Department of Paediatrics, Medical School, Mater Dei Hospital, Msida, Malta

<sup>6</sup>Division of Medical Oncology, Department of Medicine, School of Clinical Medicine, Faculty of Health Sciences, University of the Witwatersrand, Johannesburg, South Africa

<sup>7</sup>Noncommunicable Diseases Research Division, Wits Health Consortium (PTY) Ltd, Johannesburg, South Africa

<sup>8</sup>Department of Epidemiology and Prevention, Center for Clinical Sciences, National Center for Global Health and Medicine, Tokyo, Japan

\*Corresponding author: [parturitions@gmail.com](mailto:parturitions@gmail.com)

## 25 **Abstract**

### 26 **Background**

27 The sex ratio at birth (male live births divided by total live births) may be a sentinel health  
28 indicator. Stressful events reduce this ratio 3-5 months later by increasing male fetal loss.  
29 This ratio can also change 9 months after major population events that are linked to an  
30 increase or decrease in the frequency of sexual intercourse at the population level, with the  
31 ratio either rising or falling respectively after the event. We postulated that stress caused by  
32 the COVID-19 pandemic may have affected the ratio in England and Wales.

### 33 **Methods**

34 Publicly available, monthly live birth data for England and Wales was obtained from the  
35 Office for National Statistics up to December 2020. The sex ratio at birth for 2020 (global  
36 COVID-19 onset) was predicted using data from 2012-2019. Observed and predicted values  
37 were compared.

### 38 **Results**

39 Three months after COVID-19 was declared pandemic (March 2020), there was a significant  
40 fall in the sex ratio at birth to 0.5100 in June 2020 which was below the 95% prediction  
41 interval of 0.5102-0.5179. Nine months after the pandemic declaration, (December 2020),  
42 there was a significant rise to 0.5171 (95% prediction interval 0.5085-0.5162). However,  
43 December 2020 had the lowest number of live births of any month from 2012 to 2020.

### 44 **Conclusions**

45 Given that June 2020 falls within the crucial window when population stressors are known to  
46 affect the sex ratio at birth, these findings imply that the start of the COVID-19 pandemic  
47 caused population stress with notable effects on those who were already pregnant by causing  
48 a disproportionate loss of male fetuses. The finding of a higher sex ratio at birth in December

49 2020, i.e., 9 months after COVID-19 was declared a pandemic, suggests that lockdown  
50 restrictions initially spurred more sexual activity in a subset of the population in March 2020.

51

52 **Keywords** Sex ratio at birth, population stressor, COVID-19, lockdown, England, Wales,  
53 sexual intercourse

54

55

56

57

58

59

60

61

62

63

64

65

66

67

68

69

70

71

72

73

## 74 Introduction

75 Male live births outnumber female live births at the population level (Graunt 1676). The  
76 secondary sex ratio, commonly known as the sex ratio at birth (SRB), is calculated as male  
77 divided by total live births (Grech 2014). The SRB may serve as a sentinel health indicator,  
78 revealing unfavourable conditions through a decline and better conditions through an increase  
79 (Davis et al. 1998; Grech & Masukume 2016).

80 In response to population-level events, the SRB may remain unchanged (Grech & Scherb  
81 2021; Masukume & Grech 2016), transiently increase, or decrease. The increases or  
82 decreases have been noted to occur within two distinct time windows. The first window is 3-5  
83 months after sudden and unanticipated stressful events such as terrorist attacks (Bruckner et  
84 al. 2010), the death of a well-known public person (Grech 2015), or unexpected national  
85 election results (Retnakaran & Ye 2020). This first window is linked to a disproportionate  
86 pregnancy loss of male fetuses, which is reflected in a lower SRB a few months after the  
87 stressful event. Male fetuses are more vulnerable to the effects of maternal stress (Aiken &  
88 Ozanne 2013; Catalano et al. 2021), in accordance with the Trivers-Willard hypothesis,  
89 which holds that unfavourable environmental conditions might lower the ratio of males to  
90 females (Trivers & Willard 1973).

91 The second window occurs 9 months after an event and can result in either a drop or a rise in  
92 the SRB. The SRB can decrease 9 months after a stressful event, such as a massive  
93 earthquake, and this is ascribed to a decrease in population-level sexual intercourse frequency  
94 and/or reduced sperm motility (Fukuda et al. 2018; Fukuda et al. 1996). The SRB may  
95 increase 9 months later if the event is linked to a population-level opportunity for more  
96 frequent sexual activity, such as the celebratory atmosphere during the first-ever home  
97 Fédération Internationale de Football Association (FIFA) 2010 World Cup tournament with a  
98 strong showing by the local team (Masukume & Grech 2015). It has been established that

SRB and the fertile phase of the menstrual cycle have a U-shaped association (Guerrero 1974). The SRB would be skewed toward male births because of this U-shaped association if coitus was more common at the population level and more conceptions occurred further from the centre of the fertile period.

It has been suggested that an SRB decrease could be brought on by COVID-19 stress (Abdoli 2020). Indeed, we noted that the SRB fell in South Africa in June 2020, 3 months after COVID-19 was proclaimed a pandemic (Masukume et al. 2022), and in Japan in December 2020, 9 months after the proclamation (Inoue & Mizoue 2022).

March 2020 was a key month for COVID-19 in England and Wales. This month saw an increase in local and international media coverage of the virus (Ng et al. 2021) as the World Health Organization (WHO) declared COVID-19 to be a pandemic (Cucinotta & Vanelli 2020). The first COVID-19 related death in England was also reported in March 2020 (Mahase 2020). Furthermore, on 23 March 2020, the Prime Minister of the United Kingdom (UK), i.e., England, Wales, Scotland and Northern Ireland made a major announcement on ‘lockdown’ restrictions, the closure of non-essential enterprises and the requirement to stay at home save for a few limited circumstances, in one of the most watched broadcasts. Higher levels of COVID-19-related anxiety, depression and trauma symptoms were observed in the general population in the UK from 23 to 28 March 2020 compared to previous epidemiologic periods (Shevlin et al. 2020). This study sought to ascertain whether the SRB in England and Wales changed in response to the COVID-19 pandemic, as well as when this change took place.

## Material and methods

### Data and statistical analysis

We used publicly available, monthly live birth data for England and Wales obtained from the Office for National Statistics, which is typically the most comprehensive data source available (Office for National Statistics 2022). The 108-month period (9 years) covered by the data, from January 2012 to December 2020, was consistent with the number of months examined in earlier research on the subject (Inoue & Mizoue 2022; Masukume et al. 2022). The most recent month for which data was available was December 2020.

The source of live birth data is a legal record that is the result of a child's parent(s) or informant formally registering the birth at a registry office. The doctor or midwife who attended the birth fills out a birth notification form. The coronavirus pandemic did not influence birth notifications the same way it did on birth registrations, which were delayed. For 2020, 0.3% of birth registrations across England and Wales were still unlinked to birth notifications (Office for National Statistics 2021).

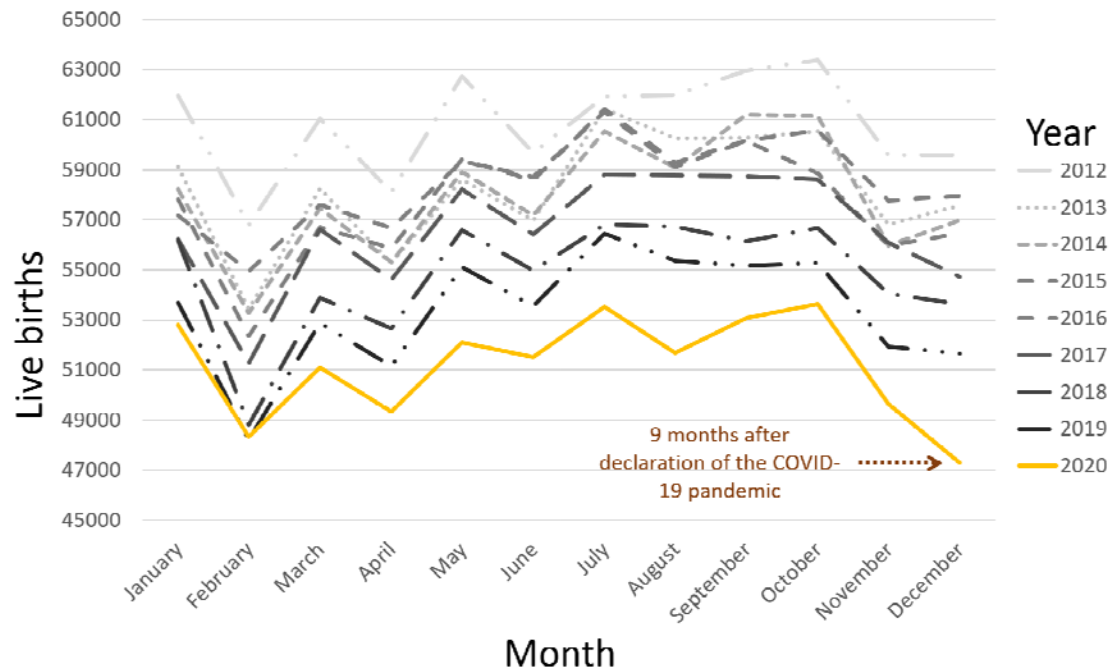
Using data from January 2012 to December 2019, we predicted SRBs for the 2020 months because the disease now known as COVID-19 was initially notified to WHO on 31 December 2019 (Wu & McGoogan 2020). We utilized an autoregressive moving average (ARMA) model with the minimum Akaike Information Criterion (AIC) (i.e., autoregressive parameter [4] and moving average parameter [4]) to fit SRBs for January 2012 to December 2019 after checking for stationarity with the Dickey-Fuller test ( $p < .001$ ) (Table S1). The results from this model were applied to predict SRBs for 2020. The 95% upper and lower bounds of the predicted SRBs were calculated using Stata's 'predict' command and the 'mse' option (StataCorp 2019).

# **Ethical considerations**

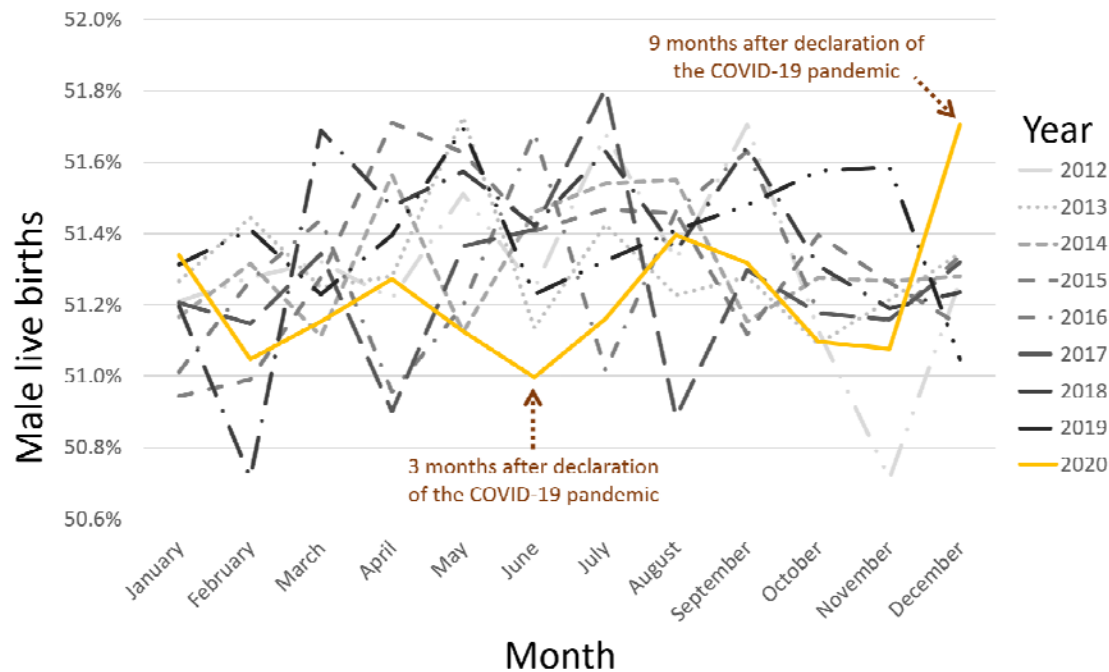
The data were anonymized, thus ethical approval was not required.

## Results

A total of 6,108,030 live births—3,133,915 males and 2,974,115 females—were recorded during the 9-year period between January 2012 and December 2020, with an SRB of 0.5131. From 2012 through 2020, December 2020 had the fewest live births of any month with 47,291 (Figure 1). The SRB for June 2020 was 0.5100, the lowest of any June throughout the study period. June 2020 was also the first time June had had the lowest SRB of the year. The SRB for December 2020 was 0.5171, which was the highest for any December throughout the study period. Additionally, December 2020 marked the first time the month had the highest SRB of the year (Figure 2). The lowest yearly SRB over the 9-year period was 0.5122 observed in 2020. There was a significant fall in the SRB of 0.5100 in June 2020 which was below the 95% prediction interval of 0.5102-0.5179. In December 2020, there was a significant rise in the SRB of 0.5171 which was above the 95% prediction interval of 0.5085-0.5162 (Figure 3 and Table 1).



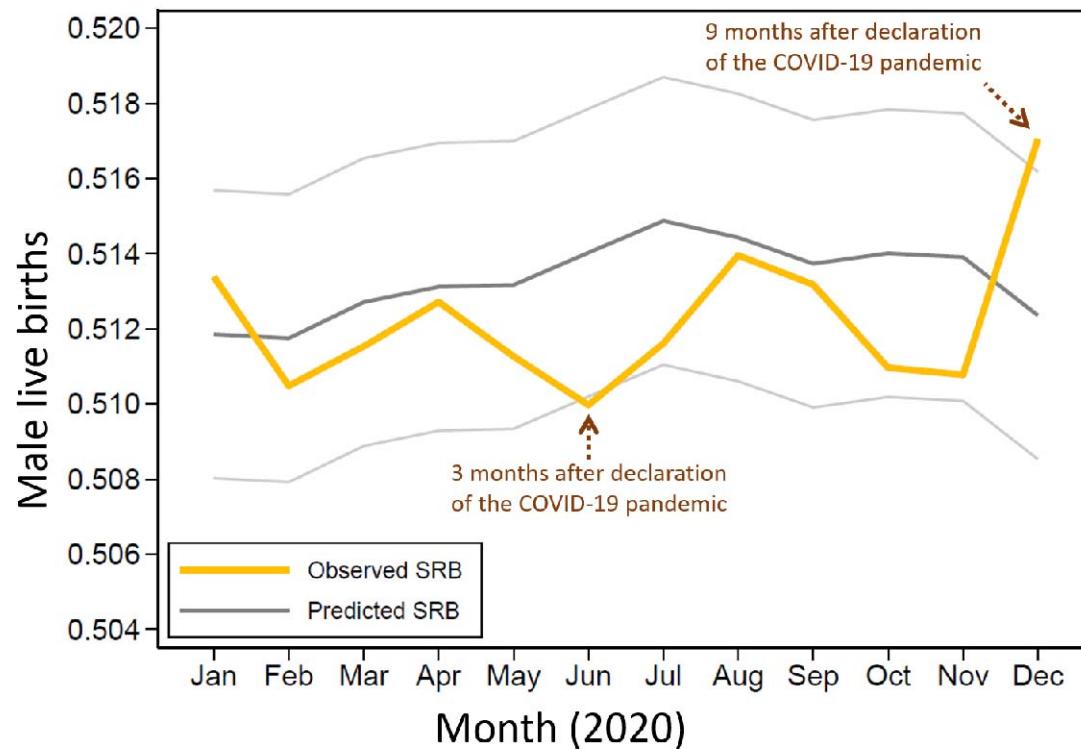
**Figure 1.** Total live births over 9 years, from January 2012 to December 2020.



**Figure 2.** Monthly proportion of male live births over 9 years, from January 2012 to December 2020.



169



170

171 **Figure 3.** Observed and predicted sex ratio at birth (SRB) in 2020.

172

173 **Table 1.** Observed and predicted sex ratio at birth for 2020.

Month	Males	Females	Observed SRB	Predicted SRB	Lower 95% PI	Upper 95% PI
January	27109	25695	0.5134	0.5119	0.5080	0.5157
February	24665	23652	0.5105	0.5118	0.5079	0.5156
March	26129	24951	0.5115	0.5127	0.5089	0.5165
April	25296	24041	0.5127	0.5131	0.5093	0.5169
May	26634	25460	0.5113	0.5132	0.5093	0.5170
June	26261	25234	0.5100	0.5140	0.5102	0.5179
July	27379	26136	0.5116	0.5149	0.5110	0.5187
August	26552	25110	0.5140	0.5144	0.5106	0.5183
September	27239	25840	0.5132	0.5137	0.5099	0.5176

<b>October</b>	27400	26224	0.5110	0.5140	0.5102	0.5178
<b>November</b>	25354	24284	0.5108	0.5139	0.5101	0.5177
<b>December</b>	24452	22839	0.5171	0.5124	0.5085	0.5162

174 SRB - sex ratio at birth, PI – prediction interval

175

## 176 Discussion

### 177 Principal findings

178 In this study, we observed that the COVID-19 pandemic affected SRB in England and Wales.

179 We observed that December 2020 had notably the fewest live births of any month over the

180 108-month study period, with 47,291 live births, 9 months after the pandemic was declared in

181 March 2020. With an SRB of 0.5100, June 2020's SRB was significantly the lowest of any

182 June during the study period. Indeed, the lowest SRB of the year was recorded for the first

183 time in June 2020. This SRB decline took place 3 months after the pandemic was declared.

184 The December 2020 SRB, which was 0.5171, was significantly the highest SRB for any

185 December throughout the study period. Indeed, for the first time in 2020, December saw the

186 highest SRB of the year.

### 187 Comparison with other studies

188 Three months after the COVID-19 pandemic was declared, a decline in the SRB was noted in

189 South Africa in June 2022 (Masukume et al. 2022), which is similar to the transient decline in

190 SRB observed in this study in June 2020. This is consistent with studies that found a transient

191 reduction in SRB 3-5 months after unanticipated occurrences that stressed populations

192 (Calleja 2020; Catalano et al. 2006; Grech 2015; Retnakaran & Ye 2020).

193 Excess male fetal loss, particularly in those who were 20 to 28 weeks (4-7 months) pregnant

194 at the time of the major stressful event, has been linked to a drop in the SRB 3 months later

195 (Bruckner et al. 2010). A stillbirth is defined in England and Wales as a fetal death that

occurs at  $\geq 24$  completed weeks of pregnancy, whereas a miscarriage happens at  $< 24$  completed weeks (Gurol-Urganci et al. 2022; Jones et al. 2022). Thus, our findings indicating a decreased SRB in England and Wales in June 2020, 3 months after the declaration of the COVID-19 pandemic, imply an increase in miscarriage and stillbirth rates during the early part of the COVID-19 pandemic, disproportionately affecting male fetuses.

Moreover, a rise in stillbirths from 2.38 per 1,000 births between 1 October 2019 and 31 January 2020 (defined as the pre-pandemic period) to 9.31 per 1,000 births between 1 February and 14 June 2020 (defined as the pandemic period) was reported from an English centre (Khalil et al. 2020). Although the sex of the stillbirths was not provided, in this English paper, male fetuses typically account for the majority of stillbirths (Mondal et al. 2014). These particular stillbirths had no connection to clinically severe acute respiratory syndrome coronavirus 2 (SARS-CoV-2) infection, which indicates an indirect stillbirth mechanism possibly involving increased maternal stress and anxiety. Internationally, miscarriages are typically not included in such statistics (Gurol-Urganci et al. 2022; Jones et al. 2022). Because a drop in the SRB might also be used to detect male fetal loss (Bruckner et al. 2010), our results also indicate that there may have been an unrecognised excess of male fetal loss before 24 weeks gestation (miscarriages). This is because national level statistics from England (Gurol-Urganci et al. 2022) and Wales (Jones et al. 2022) did not indicate a rise in stillbirths throughout the COVID-19 period of the current investigation, in contrast to the aforementioned single centre study (Khalil et al. 2020).

Despite the SRB rising, in England and Wales, in December 2020, 9 months after the COVID-19 pandemic was declared, this happened in the context of a sharp reduction in overall live births compared to Decembers prior. Contrasting this with the fact that 9 months following the 2010 FIFA World Cup in South Africa, there was an increase in SRB along with an increase in the overall number of live births (Masukume & Grech 2015; Masukume

et al. 2016). This suggests that whereas a greater fraction of the population engaged in sexual activity more frequently in South Africa during the 2010 World Cup, a smaller portion of the population did so in England and Wales in March 2020. This is consistent with a British study that looked at the first 4 months of the lockdown and found that some people who were cohabiting felt like they had more partnered sexual activity since the lockdown, but people who were not cohabiting felt like they had less (Mercer et al. 2021).

Contrary to our current findings, the SRB fell in Japan, as we previously reported, in December 2020, 9 months after COVID-19 was designated a pandemic (Inoue & Mizoue 2022), but this Japanese decline might have been within the same context as a significant decline in overall live births for December 2020 seen in England and Wales (Ghaznavi et al. 2022). This would suggest less frequent sexual encounters (Guerrero 1974), and indeed declines in sexual activity associated with the start of the COVID-19 pandemic have been suggested in Japan (Kitamura et al. 2021).

Overall, our research demonstrates that the SRB is a very valuable sentinel health indicator since, unlike other indicators, it is usually available for entire populations (Davis et al. 1998). Population dynamics can be better understood by triangulating the SRB with additional data.

### **Strengths and limitations**

The study's results cannot be extrapolated to the individual level due to the ecological fallacy (Björk et al. 2021). However, the ecologic study method is arguably the most appropriate for examining how a population stressor affects a population outcome (Pearce 2011).

March 2020 saw the temporary suspension of birth registration in England and Wales. As soon as it was safe to do so, registrations started up again in June 2020. Under normal circumstances, more than 95% of births are typically documented within the required 42-day window. In 2020, only 58% of births were reported within 42 days, a notable reduction. Due to this known delay, the cut-off date for incorporating 2020 live birth registrations was five

and a half months later than usual, in August 2021. Similar distributions for the baby's sex were found in both the linked registrations data and the unlinked notifications when birth registrations and birth notifications were compared. The aforementioned birth registration delays had little bearing on the current analysis because 0.3% of notifications across England and Wales were still unlinked (Office for National Statistics 2021).

The analysis presented here pertains to England and Wales' initial COVID-19 wave (Knock et al. 2021). England and Wales had seen more waves at the time of writing. In the waves that followed, the SRB might have been perturbed. When the live birth data for these times are made accessible, this is a topic for further study. In the years between 2012 and 2020, we also noticed other major SRB dips and peaks, but we had not *a priori* hypothesised how they might have arisen; thus, we did not address them further in this paper.

## Conclusions

These results suggest that the start of the COVID-19 pandemic caused population stress with notable effects on those who were already pregnant by causing a disproportionate loss of male fetuses given that June 2020 falls within the critical window when population stressors are known to affect the sex ratio at birth. The finding of a higher sex ratio at birth in December 2020, 9 months after COVID-19 was declared a pandemic, indicates that lockdown regulations initially encouraged more partnered sexual activity in a small portion of the population. Future pandemic preparedness (Marston et al. 2017) and social policy (Cook & Ulriksen 2021) can be influenced by our findings. Examples of how this knowledge could be applied to prevent a potential SRB reduction include targeted increases in resources for maternal health services, including improved fetal surveillance, particularly during and in the lead up to 3-5 months after the start of a future pandemic. Future studies should examine whether the SRB changed in other nations after the onset of COVID-19.

## 271 Acknowledgements

272 We acknowledge the Office for National Statistics for the recorded live birth data.

273

## 274 Funding

275 The authors received no funding for this work.

276

## 277 Competing interests

278 The authors declare there are no competing interests.

279

## 280 Author Contributions

281 Conceptualization: GM, MR, RM, DZ, VG, WM, YI

282 Data curation: VG, GM, YI

283 Formal analysis: YI, VG, GM

284 Writing – original draft: GM

285 Writing – review & editing: MR, RM, GM, DZ, VG, WM, YI

286

## 287 References

288 Abdoli A. 2020. The COVID-19 stress may influence on the sex ratio at birth. *J Matern Fetal*

289 *Neonatal Med*:1-6. 10.1080/14767058.2020.1846181

290 Aiken CE, and Ozanne SE. 2013. Sex differences in developmental programming models.

291 *Reproduction* 145:R1-13. 10.1530/rep-11-0489

292 Björk J, Modig K, Kahn F, and Ahlbom A. 2021. Revival of ecological studies during the

293 COVID-19 pandemic. *European Journal of Epidemiology* 36:1225-1229.

294 10.1007/s10654-021-00830-9

295 Bruckner TA, Catalano R, and Ahern J. 2010. Male fetal loss in the U.S. following the  
296 terrorist attacks of September 11, 2001. *BMC Public Health* 10:273. 10.1186/1471-  
297 2458-10-273

298 Calleja T. 2020. The assassinations of investigative journalists Daphne Caruana Galizia and  
299 Veronica Guerin and the male-to-female birth ratio. *Early Human Development*  
300 141:104950. 10.1016/j.earlhumdev.2019.104950

301 Catalano R, Bruckner T, Casey JA, Gemmill A, Margerison C, and Hartig T. 2021. Twinning  
302 during the pandemic: Evidence of selection in utero. *Evolution, Medicine, and Public*  
303 *Health* 9:374-382. 10.1093/emph/eoab033

304 Catalano R, Bruckner T, Marks AR, and Eskenazi B. 2006. Exogenous shocks to the human  
305 sex ratio: the case of September 11, 2001 in New York City. *Hum Reprod* 21:3127-  
306 3131. 10.1093/humrep/del283

307 Cook S, and Ulriksen MS. 2021. Social policy responses to COVID-19: New issues, old  
308 solutions? *Global Social Policy* 21:381-395. 10.1177/14680181211055645

309 Cucinotta D, and Vanelli M. 2020. WHO Declares COVID-19 a Pandemic. *Acta Biomed*  
310 91:157-160. 10.23750/abm.v91i1.9397

311 Davis DL, Gottlieb MB, and Stampnitzky JR. 1998. Reduced ratio of male to female births in  
312 several industrial countries: a sentinel health indicator? *Jama* 279:1018-1023.  
313 10.1001/jama.279.13.1018

314 Fukuda M, Fukuda K, Mason S, Shimizu T, and Yding Andersen C. 2018. The sex ratio at  
315 birth after recent major earthquakes in Japan. *Early Hum Dev* 123:30-31.  
316 10.1016/j.earlhumdev.2018.06.002

317 Fukuda M, Fukuda K, Shimizu T, Yomura W, and Shimizu S. 1996. Kobe earthquake and  
318 reduced sperm motility. *Hum Reprod* 11:1244-1246.  
319 10.1093/oxfordjournals.humrep.a019365

320 Ghaznavi C, Kawashima T, Tanoue Y, Yoneoka D, Makiyama K, Sakamoto H, Ueda P,  
321 Eguchi A, and Nomura S. 2022. Changes in marriage, divorce and births during the  
322 COVID-19 pandemic in Japan. *BMJ Global Health* 7:e007866. 10.1136/bmjgh-2021-  
323 007866

324 Graunt J. 1676. Natural and political observations mentioned in a following index, and made  
325 upon the Bills of mortality. Available at  
326 <https://wellcomecollection.org/works/jt43sbkc>.

327 Grech V. 2014. Secular trends in newborn sex ratios. *Early Hum Dev* 90:755-760.  
328 10.1016/j.earlhumdev.2014.08.018

329 Grech V. 2015. Historic Royal events and the male to female ratio at birth in the United  
330 Kingdom. *Eur J Obstet Gynecol Reprod Biol* 191:57-61.  
331 10.1016/j.ejogrb.2015.05.012

332 Grech V, and Masukume G. 2016. The sex ratio at birth in South Africa may be a sentinel  
333 health indicator. *Early Hum Dev* 103:225-227. 10.1016/j.earlhumdev.2016.10.008

334 Grech V, and Scherb H. 2021. No local birth sex ratio changes following the August 2019  
335 shootings in Montgomery county, Ohio and in El Paso county, Texas. *Med Princ*  
336 *Pract*. 10.1159/000521338

337 Guerrero R. 1974. Association of the Type and Time of Insemination within the Menstrual  
338 Cycle with the Human Sex Ratio at Birth. *New England Journal of Medicine*  
339 291:1056-1059. 10.1056/nejm197411142912004

340 Gurol-Urganci I, Waite L, Webster K, Jardine J, Carroll F, Dunn G, Frémeaux A, Harris T,  
341 Hawdon J, Muller P, van der Meulen J, and Khalil A. 2022. Obstetric interventions  
342 and pregnancy outcomes during the COVID-19 pandemic in England: A nationwide  
343 cohort study. *PLOS Medicine* 19:e1003884. 10.1371/journal.pmed.1003884



344 Inoue Y, and Mizoue T. 2022. A preliminary analysis of the secondary sex ratio decline after  
345 the COVID-19 pandemic in Japan. *Am J Hum Biol*:eajhb. 10.1002/ajhb.23750

346 Jones H, Seaborne M, Cowley L, Odd D, Paranjothy S, Akbari A, and Brophy S. 2022.  
347 Population birth outcomes in 2020 and experiences of expectant mothers during the  
348 COVID-19 pandemic: A 'born in Wales' mixed methods study using routine data.  
349 *PLoS One* 17:e0267176. 10.1371/journal.pone.0267176

350 Khalil A, von Dadelszen P, Draycott T, Ugwumadu A, O'Brien P, and Magee L. 2020.  
351 Change in the Incidence of Stillbirth and Preterm Delivery During the COVID-19  
352 Pandemic. *Jama* 324:705-706. 10.1001/jama.2020.12746

353 Kitamura K, Ae R, and Kosami M. 2021. Survey of Pregnancy and Contraceptive Awareness  
354 and Behavior during the COVID-19 Pandemic and Efforts to Raise Awareness and  
355 Create Educational Material for Youth.

356 Knock ES, Whittles LK, Lees JA, Perez-Guzman PN, Verity R, FitzJohn RG, Gaythorpe  
357 KAM, Imai N, Hinsley W, Okell LC, Rosello A, Kantas N, Walters CE, Bhatia S,  
358 Watson OJ, Whittaker C, Cattarino L, Boonyasiri A, Djaafara BA, Fraser K, Fu H,  
359 Wang H, Xi X, Donnelly CA, Jauneikaite E, Laydon DJ, White PJ, Ghani AC,  
360 Ferguson NM, Cori A, and Baguelin M. 2021. Key epidemiological drivers and  
361 impact of interventions in the 2020 SARS-CoV-2 epidemic in England. *Sci Transl*  
362 *Med* 13. 10.1126/scitranslmed.abg4262

363 Mahase E. 2020. Covid-19: UK records first death, as world's cases exceed 100 000. *Bmj*  
364 368:m943. 10.1136/bmj.m943

365 Marston HD, Paules CI, and Fauci AS. 2017. The Critical Role of Biomedical Research in  
366 Pandemic Preparedness. *Jama* 318:1757-1758. 10.1001/jama.2017.15033

367 Masukume G, and Grech V. 2015. The sex ratio at birth in South Africa increased 9months  
368 after the 2010 FIFA World Cup. *Early Hum Dev* 91:807-809.  
369 10.1016/j.earlhumdev.2015.10.006

370 Masukume G, and Grech V. 2016. The sex ratio at birth in France was unchanged 9months  
371 after the 1998 FIFA World Cup. *Early Hum Dev* 99:13-15.  
372 10.1016/j.earlhumdev.2016.04.009

373 Masukume G, Grech V, and Scherb H. 2016. Reply: Analysis of the sex ratio at birth in  
374 South Africa increased 9months after the 2010 FIFA World Cup. *Early Hum Dev*  
375 97:11-13. 10.1016/j.earlhumdev.2015.12.002

376 Masukume G, Ryan M, Masukume R, Zammit D, Grech V, and Mapanga W. 2022. COVID-  
377 19 onset reduced the sex ratio at birth in South Africa. *PeerJ* 10:e13985.  
378 10.7717/peerj.13985

379 Mercer CH, Clifton S, Riddell J, Tanton C, Freeman L, Copas AJ, Dema E, Bosó Pérez R,  
380 Gibbs J, Macdowall W, Menezes D, Ridge M-C, Bonell C, Sonnenberg P, Field N,  
381 and Mitchell KR. 2021. Impacts of COVID-19 on sexual behaviour in Britain:  
382 findings from a large, quasi-representative survey (Natsal-COVID). *Sexually*  
383 *Transmitted Infections*:sextrans-2021-055210. 10.1136/sextrans-2021-055210

384 Mondal D, Galloway TS, Bailey TC, and Mathews F. 2014. Elevated risk of stillbirth in  
385 males: systematic review and meta-analysis of more than 30 million births. *BMC*  
386 *Medicine* 12:220. 10.1186/s12916-014-0220-4

387 Ng R, Chow TYJ, and Yang W. 2021. News media narratives of Covid-19 across 20  
388 countries: Early global convergence and later regional divergence. *PLoS One*  
389 16:e0256358. 10.1371/journal.pone.0256358

390 Office for National Statistics. 2021. Births in England and Wales explained: 2020. *Available*  
391 *at*

392 [https://www.ons.gov.uk/peoplepopulationandcommunity/birthsdeathsandmarriages/li](https://www.ons.gov.uk/peoplepopulationandcommunity/birthsdeathsandmarriages/livebirths/articles/birthsinenglandandwalesexplained/2020)  
393 [vebirths/articles/birthsinenglandandwalesexplained/2020](https://www.ons.gov.uk/peoplepopulationandcommunity/birthsdeathsandmarriages/articles/birthsinenglandandwalesexplained/2020).  
394 Office for National Statistics. 2022. Live births by month of occurrence and sex of baby,  
395 England and Wales, 2012 to 2020. Available at  
396 [https://www.ons.gov.uk/file?uri=/peoplepopulationandcommunity/birthsdeathsandma](https://www.ons.gov.uk/file?uri=/peoplepopulationandcommunity/birthsdeathsandmarriages/livebirths/adhocs/15002livebirthsbymonthofoccurrenceandsexofbabyenglandandwales2012to2020/livebirthsbymonth.xlsx)  
397 [rriages/livebirths/adhocs/15002livebirthsbymonthofoccurrenceandsexofbabyenglanda](https://www.ons.gov.uk/file?uri=/peoplepopulationandcommunity/birthsdeathsandmarriages/livebirths/adhocs/15002livebirthsbymonthofoccurrenceandsexofbabyenglandandwales2012to2020/livebirthsbymonth.xlsx)  
398 [ndwales2012to2020/livebirthsbymonth.xlsx](https://www.ons.gov.uk/file?uri=/peoplepopulationandcommunity/birthsdeathsandmarriages/livebirths/adhocs/15002livebirthsbymonthofoccurrenceandsexofbabyenglandandwales2012to2020/livebirthsbymonth.xlsx).  
399 Pearce N. 2011. Epidemiology in a changing world: variation, causation and ubiquitous risk  
400 factors. *Int J Epidemiol* 40:503-512. 10.1093/ije/dyq257  
401 Retnakaran R, and Ye C. 2020. Outcome of the 2016 United States presidential election and  
402 the subsequent sex ratio at birth in Canada: an ecological study. *BMJ Open*  
403 10:e031208. 10.1136/bmjopen-2019-031208  
404 Shevlin M, McBride O, Murphy J, Miller JG, Hartman TK, Levita L, Mason L, Martinez AP,  
405 McKay R, Stocks TVA, Bennett KM, Hyland P, Karatzias T, and Bentall RP. 2020.  
406 Anxiety, depression, traumatic stress and COVID-19-related anxiety in the UK  
407 general population during the COVID-19 pandemic. *BJPsych Open* 6:e125.  
408 10.1192/bjo.2020.109  
409 StataCorp. 2019. Arima postestimation (Online): Stata Statistical Software: Release 16.  
410 Available at <https://www.stata.com/manuals/tsarimapostestimation.pdf2022>).  
411 Trivers RL, and Willard DE. 1973. Natural selection of parental ability to vary the sex ratio  
412 of offspring. *Science* 179:90-92. 10.1126/science.179.4068.90  
413 Wu Z, and McGoogan JM. 2020. Characteristics of and Important Lessons From the  
414 Coronavirus Disease 2019 (COVID-19) Outbreak in China: Summary of a Report of  
415 72 314 Cases From the Chinese Center for Disease Control and Prevention. *Jama*  
416 323:1239-1242. 10.1001/jama.2020.2648

417 **Table S1.** Parameter selection procedure for the autoregressive moving average (ARMA) model to fit and predict secondary sex ratio in England  
418 and Wales.

AR	MA	AR					MA					AIC
		L1	L2	L3	L4	L5	L1	L2	L3	L4	L5	
1	0	-0.01										-897.15
1	1	0.92					-1.00					-897.39
1	2	0.91					-0.96	-0.04				-897.52
1	3	0.89					-0.95	0.01	-0.07			-893.89
1	4	0.71					-0.75	0.02	-0.03	-0.07		-891.4
1	5	0.62					-0.67	0.01	0.04	0.05	-0.21	-891.78
2	0	-0.01	0.02									-895.18
2	1	0.95	-0.04				-1.00					-897.54
2	2	-0.01	0.86				-0.10	-0.90				-896.00
2	3	NC					NC					
2	4	NC					NC					
2	5	1.30	-0.77				-1.44	0.95	-0.01	-0.01	-0.17	-899.75
3	0	-0.01	0.02	-0.02								-893.2
3	1	0.95	0.02	-0.07			-1.00					-896.00
3	2	-1.53	-0.99	-0.05			1.57	1.00				-893.94

3	3	NC					NC					
3	4	-0.08	-0.02	-0.74			0.02	0.09	0.88	0.16		-894.88
3	5	2.23	-2.03	0.75			-2.40	2.41	-0.94	-0.18	0.12	-898.86
4	0	-0.01	0.02	-0.02	-0.01							-891.21
4	1	0.72	0.02	-0.03	-0.11		-0.75					-892.38
4	2	-0.82	-0.92	0.06	0.08		0.83	0.97				-891.28
4	3	1.90	-1.71	0.68	-0.13		-2.65	2.75	-1.35			-899.42
4	4	1.71	-1.83	1.51	-0.88		-1.80	2.05	-1.80	1.00		-904.70
4	5	1.39	0.05	-1.20	0.65		-1.23	0.03	1.05	-0.68	-0.16	-897.78
5	0	-0.01	0.01	-0.01	-0.02	-0.18						-892.38
5	1	0.56	0.02	-0.02	-0.01	-0.2	-0.61					-893.52
5	2	NC					NC					
5	3	NC					NC					
5	4	0.73	-0.37	0.79	-0.82	-0.18	-0.90	0.47	-0.84	0.96		-903.07
5	5	NC					NC					

419 AIC: Akaike Information Criterion; AR: autoregressive parameter; MA: moving average parameters; NC: not converged.