

1 **Rehabilitation strategies for lateral ankle sprain do not reflect established**

2 **mechanisms of re-injury: A systematic review**

3 Jente Wagemans^{1,3*}, Chris Bleakley², Jan Taeymans^{3,4}, Kevin Kuppens^{1,5}, Alexander Philipp

4 Schurz³, Heiner Baur³, Dirk Vissers^{1,3}

5 ¹Department of Rehabilitation Sciences and Physiotherapy, Faculty of Medicine and Health
6 Sciences, University of Antwerp, Antwerp, Belgium

7 ²School of Health Science, Ulster University, Newtownabbey, Northern Ireland

8 ³Department of Health Professions, Bern University of Applied Sciences, Bern, Switzerland

9 ⁴Faculty of Physical Education and Physiotherapy, Vrije Universiteit Brussel, Brussels,
10 Belgium

11 ⁵SOMT University of Physiotherapy Education, Amersfort, The Netherlands

12 *Corresponding author:

13 E- mail: jente.wagemans@uantwerpen.be (JW)

14 Alternative e- mail: jentewagemans@hotmail.com

15 **Declarations of interest:** none

16 **Funding:** This research did not receive any specific grant from funding agencies in the public,
17 commercial, or not-for-profit sectors.

18 Abstract

19 Research questions

20 1) What is the primary impairment addressed by each exercise included in exercise-based
21 rehabilitation programs for patients who suffered an acute ankle sprain?

22 2) Do prescribed exercises incorporate complex tasks associated with common ankle sprain
23 injury mechanisms?

24 Methods

25 We searched six electronic databases (CINAHL, Web of Science, SPORTDiscus, Cochrane
26 Register of Controlled Trials, PEDro, Google Scholar) for randomized controlled trials including
27 patients with acute ankle sprains, managed through exercise-based rehabilitation. Exercises
28 were analysed based on: the primary impairment(s) addressed (muscle strength, mobility,
29 neuromuscular training, performance); direction of movement (uni- vs multiplanar); base of
30 support (single vs double limb); weightbearing status (open vs closed chain); and use of a flight
31 phase. (PROSPERO: CRD42020210858)

32 Results

33 We included fourteen randomized controlled trials comprising 177 exercises. Neuromuscular
34 function was addressed in 44% of exercises, followed by performance tasks (23%), and muscle
35 strengthening (20%). Exercises were limited to movements across the sagittal plane (48%),
36 with 31% incorporating multiplanar movements. Weight bearing exercises were almost
37 divided equally between single-limb (59/122) and double leg stance exercises (61/122).
38 Eighteen percent of all exercises (34/177) incorporated a flight phase.

39 Conclusions

40 Rehabilitation after LAS largely comprises simple exercises in the sagittal plane that do not
41 reflect established mechanisms of re-injury. Future interventions can be enhanced by
42 incorporating more open chain joint position sense training, multiplanar single limb
43 challenges, and jumping and landing exercises.

44 Keywords

45 Ankle injuries, Exercise, Rehabilitation

46 Introduction

47 Lateral ankle sprains (LAS) are one of the most frequently occurring injuries among athletes.¹⁻³

48 There is a high risk of LAS in volleyball, basketball and football with prevalence ranging from

49 26-41%.³⁻⁵ Athletes with a history of LAS have greater risk of future injury,⁶ with recurrence

50 rates of 28-61% recorded in (Association) football⁷, American football, basketball, and

51 volleyball.³ Around 40% of patients with a history of LAS have additional long-term problems,

52 such as persisting pain, giving-way episodes, and perceived instability, termed chronic ankle

53 instability (CAI).⁸⁻¹⁰

54 A 2022 systematic review with meta-analysis concluded that exercise-based rehabilitation

55 reduces the risk of recurrent ankle sprain, compared to usual care.¹¹ The authors also reported

56 some inconsistencies in exercise content and dosage prescribed for LAS rehabilitation, and an

57 optimal program remains unclear.^{11, 12} Researchers often simplify the exercise content within

58 an experimental study to facilitate replication and increase participant adherence. However,

59 if exercises are too basic, they lack context and specificity, particularly for athletic populations.

60 Recent scoping reviews conclude that most rehabilitation exercises prescribed for common

61 musculoskeletal injuries at the hip (Femero acetabulair Impingement)¹³ and knee (Anterior

62 cruciale ligament, Patellofemoral Pain Syndrome)^{14, 15}, are too simplistic and lack complexity,
63 specificity and progression.

64 A key clinical goal after an index LAS is to prevent recurrence.¹⁶ The ROAST consensus
65 highlights the importance of addressing mechanical and sensorimotor insufficiencies after
66 LAS¹⁷; which often present clinically as reduced mobility, strength, and postural control.
67 Understanding the etiology, mechanisms and inciting events that lead to recurrent LAS are
68 also crucial to effectively design rehabilitation exercises.¹⁷ Injury surveillance data suggest that
69 most non-contact LAS occur during multidirectional, reactive phases of play, or during high-
70 speed jumping and landing.³ Biomechanical studies show that recurrent LAS often involve
71 excessive inversion and internal rotation at initial contact, and a delay in peroneus muscle
72 activation.¹⁸⁻²¹ To date, no research has comprehensively analysed the nature of individual
73 exercises that comprise popular LAS rehabilitation programs.

74 In a recent systematic review with meta-analysis, we reported about training volume after a
75 comprehensive analysis of the included exercise programs. However, all extracted data
76 regarding the included exercises was too extensive to fall within the scope of that systematic
77 review. Hence, we decided to perform a secondary exploratory literature review. No new
78 RCT's have emerged since the previous systematic review with meta-analysis was published.
79 This exploratory literature review audited the content of exercise-based rehabilitation
80 programs used in randomized controlled trials (RCT's), with following objectives:

- 81 - Determine the primary impairment addressed by each exercise.
- 82 - Establish if prescribed exercises incorporate complex tasks associated with common
83 LAS injury mechanisms (multiplanar movements, single limb stance, a flight phase)
84 (phase of gait when both feet are off the ground at the same time).

85 Methods

86 We performed a systematic literature search according to the Preferred Reporting Items for
87 Systematic Reviews and Meta-analysis (PRISMA). The current literature review is a secondary
88 analysis of the primary systematic review with meta-analysis.¹¹ The protocol of the systematic
89 review was a priori registered with the International Prospective Registration Register of
90 Systematic Reviews (PROSPERO; CRD42020210858). Our 2021 systematic review and meta-
91 analysis previously assessed the study quality and risk of bias of the included studies, and the
92 therapeutic quality of the exercise programs.¹¹

93
94 Databases PubMed, CINAHL, Web of Science, SPORTDiscus, Cochrane Central Register of
95 Controlled Trials, Physiotherapy Evidence Database (PEDro) and Google Scholar were
96 systematically searched to obtain relevant articles from inception throughout June 2022.
97 Additionally, reference lists of screened articles were reviewed to find more relevant articles.
98 Randomized controlled trials (RCT's) which included acute ankle sprain patients who received
99 an exercise-based rehabilitation intervention were eligible for inclusion. A detailed description
100 of the search strategy, eligibility criteria and screening are published elsewhere.¹¹

101 All individual rehabilitation exercises used across each of the included studies were extracted
102 and analysed independently by two reviewers (JW & CB). Analysis was based on the author's
103 description of the exercise in the article text, figures and/or corresponding appendices or
104 supplementary data. When illustrations or written details were not provided, or in the event
105 of disagreement about allocation in the predetermined categories, a meeting was held to
106 reach consensus between reviewers . Exercises were categorised to determine 1) the primary
107 impairment addressed by each exercise, and 2) the extent to which prescribed exercises

108 incorporated complex tasks associated with common LAS injury mechanisms. Exercises
109 incorporating components of multiplanar movement, single limb weight-bearing, and a flight
110 phase, were most reflective of injury etiology, and therefore presented the highest level of
111 challenge to the patient. A priori definitions, developed from recent scoping reviews by
112 Dischiavi et al.¹³⁻¹⁵ were used to categorize each exercise element.

113 1. Clinical impairments

114 Each exercise was categorised according to the clinical impairment that they primarily
115 addressed. We acknowledge that exercises can target multiple clinical outcomes, but our
116 objective was to ascertain the primary intent of the prescribing author in their exercise
117 selection. The following clinical outcomes were considered: range of motion, strength,
118 postural control and performance tasks. If applicable, subcategories were used to describe the
119 direction of movement (Plantar flexion, Dorsi flexion, Inversion, Eversion).

120 2. Pathomechanics

121 Each exercise was analysed to determine (a) primary plane of movement, (b) weightbearing
122 status, and (c) the presence of absence of a flight phase.

123 2a. Planes of movement

124 Initially, exercises were categorised as uniplanar (exercise occurred in uniquely in one plane
125 of motion) or multiplanar (exercise occurred in two or three of the cardinal planes of motion).
126 Uniplanar exercises were then categorised into sagittal, frontal, or transverse planes. Exercises
127 such as heel raises, and toe raises are an example of isolated movements considered to occur
128 primarily in the sagittal plane. A side jump is an example of a functional exercise considered
129 to occur primarily in the frontal plane. Exercises such as inversion and eversion muscle
130 strength training are an example of isolated movements considered to occur primarily in the

131 transverse plane. If an exercise was identified as multiplanar, the multiplanar box was
132 checked, and then the 2 or 3 planes were also identified in the analysis.

133 2b. Weightbearing Status

134 Single limb stance exercises involve bearing full weight on one extremity and contacting the
135 ground. We considered an exercise with a sequential movement, whereby one foot moved in
136 a step-by-step fashion, as having both phases of stance. Similarly, variations of lunges were
137 classified as bilateral weight bearing exercises, because both feet were on the ground during
138 the intentional phase of the exercise. An example of a single limb stance exercise is a single
139 leg heel raise or single leg squat. In a non-weightbearing exercise, neither lower extremity is
140 functionally upright (hip over knee over foot) with the foot/feet on the ground. Quadruped
141 exercises, bridging, open chain ankle strengthening, were not considered weightbearing since
142 the method and position of delivery was not reflective of the upright position identified in the
143 injury mechanism.

144 2c. Flight Phase

145 For a flight phase to be present, the exercise must include a phase where both lower
146 extremities are simultaneously off the ground during the exercise. This would include any
147 running, jumping, or hopping variations.

148 Results

149 The systematic literature search yielded 14 RCT's after duplication and screening for eligibility.

150 Figure 1 shows the Prisma Flow diagram.

151 **Figure 1. Prisma flow diagram**

152 Study characteristics

153 Table 1 summarises the study characteristics. We included 14 randomized controlled trials,
154 and a total of 177 exercises were extracted from the articles. The number of exercises
155 prescribed within individual RCTs varied from three to 41. Time since injury at recruitment
156 ranged from the day of injury to 11 weeks. Grade II ankle sprain were mostly represented. Five
157 studies²²⁻²⁶ failed to mention injury severity. Five studies^{23, 26-29} included only athletes, and the
158 population of two other studies^{30, 31} mostly comprised athletes.

160

Table 1: Study characteristics					
Study	Participants ^A	Exercises (n)	Time since injury at recruitment	Injury severity (n)	Athletic vs non athletic
Bleakley³⁰	n= 101; 69-32 (68-32%) 26y, ± 8y	8	<7 days	Grade 1 (29) Grade 2 (73)	62 – 39
Brisson³²	n= 503; 223-280 (44-56%) 30y, ± 13y	30	<72 hours	Grade 1 (149) Grade 2 (354)	215 – 288
Holme²⁷	n= 71; 44-27 (62-38%) 26y, ± 4y	7	Day of injury	Grade 1 (21) Grade 2 (38) Grade 3 (12)	71 – 0
Hultman²²	n= 65; 35-30 (54-46%) 35y, ± 14y	23	Day of injury	Not stated	Not stated
Hupperets²³	n= 522 ; 274-248 (52-48%) 28 y, ± 12 y	7	<2 months	Not stated	522 – 0
Janssen^{28*}	n= 340; 157-183 (46-54%) 34 y, ± 13 y	7	<2 months	Grade 1 (68) Grade 2/3 (272)	384 – 0
Kachanathu³³	n= 40; 24-16 (60-40%) 21.8 y, ± 2.9 y	8	Not stated	Grade 2 LAS	Not stated
Lazarou^{24, 25}	n=20 ; 6-14 (30-70%) 22 y, ± 3 y	10	≥ 11 weeks	Not stated	10 – 10
Mohammadi^{26*}	n= 60; 60-0 (100-0%) 24.6 y, ± 2.63 y	3	Not stated	Not stated	60 – 0
Punt^{31*}	n=90 ; 51-39 (64-36%) 32.7 y, ± 11 y	22	4 weeks	Grade 1 (55) Grade 2 (35)	72 – 18
Van Reijen²⁹	n= 220; 110-110 (50-50%) 37.9 y, ± 13.4 y	7	<2 months	Grade 1 (91) Grade 2 (64) Grade 3 (18)	220 – 0
Van Rijn³⁴	n= 102; 59-43 (58-42%) 37 y, ± 11.9 y	41	<1 week	Grade 1 (43) Grade 2 (42) Grade 3 (4)	Not stated
Wester³⁵	n= 48; 29-19 (60-40%) 25 y, ± 7 y	4	Day of injury	Primary LAS; grade 2	Not stated

^A Participants: total amount; male-female (%); mean age, ± SD
Abbreviations: n= amount; SD: Standard deviation

161

162 Exercise analysis

163 1. Clinical impairments

164 Figure 1 summarises the clinical impairments addressed. About 44% (78/177) of all exercises
165 primarily addressed postural control. Forty-one exercises addressed performance tasks. These
166 exercises generally comprised plyometrics, jumping and landing, and running. Muscle strength
167 was addressed in 20% of all exercises, with the majority focused on isolated strength training
168 with resistance bands. ROM was addressed in 13 plantar flexion exercises and 12 dorsiflexion
169 exercises. Exercises specifically addressing joint position sense (JPS) were underrepresented
170 (3/177).

171 **Figure 2: Clinical impairments with corresponding exercises (N=177)**

172 **Legend:** The donut chart (outer circle) depicts the proportion of impairments addressed by the included exercises; the wind rose bar chart
173 (pink bars initiating from the centre) shows the different exercises that reflect each impairment and their number of occurrence.

174 **Abbreviations:** SMF= Sensory motor function; ROM = Range of Motion; JPS= Joint position sense

175 2a. Planes of motion

176 Table 2 depicts details regarding planes of motion. Most exercises were of uniplanar nature,
177 with the sagittal plane most often represented. Most multiplanar exercises were biplanar by
178 nature, and all multiplanar exercises comprised the sagittal plane.

179 **Table 2: Planes of motion**

Total exercises: 177	N (%)
Multiplanar	55 (31.1%)
Triplanar	7 (4.0%)
Biplanar	48 (27.1%)
Sagittal-frontal	40 (22.6%)
Sagittal-transverse	8 (4.5%)
Uniplanar	122 (68.9%)
Sagittal	84 (47.55%)
Frontal	15 (8.5%)
Transverse	23 (13.0%)

188

189 2b. Weightbearing Status

190 Exercises performed while standing were divided in single limb stance (59 exercises) and
191 double leg stance exercises (61 exercises). The most common exercise performed standing
192 involved closed kinetic chain strengthening (27 exercises). Twenty-seven exercises were
193 closed kinetic chain strengthening exercises. Exercises that were not undertaken whilst
194 bearing weight involved mostly exercises whilst seated, open kinetic chain exercises or
195 exercises with a flight phase.

196 2c. Flight Phase

197 Only 34/177 exercises included a flight phase. Most were various types of jumping exercises
198 (59%), such as high jumps, long jumps or skate jumps. Agility (9%) and hop & balance (12%)
199 exercises were the least reported.

200 **Figure 3: Exercises including a flight phase**

201 Discussion

202 In this exploratory systematic review we audited the content of exercise-based rehabilitation
203 programs in randomized controlled trials (RCT's) that included patients with LAS. Previous
204 reviews and guidelines^{16, 36-38} conclude exercise-based rehabilitation is effective after LAS, but
205 because exercise content can vary, there is no consensus on an optimal rehabilitation
206 program.^{11, 12} In this study, we reviewed individual rehabilitation exercises for LAS,
207 categorizing them by the impairment addressed, and the extent to which each exercise
208 reflects common mechanisms of re-injury. We included 14 RCT's and categorized an aggregate
209 of 177 exercises. A key finding was that most rehabilitation exercises prescribed within the
210 literature are basic, consequently, some common impairments are not adequately addressed,
211 and few exercises reflect established mechanisms of re-injury.

212 Ligament injuries such as LAS alter mechanoreceptor function, diminishing proprioception,
213 balance, muscle strength and prolonging muscle reaction time.³⁹ Our review found that almost
214 half of exercises prescribed after LAS involve single leg balancing, which were often varied by
215 standing on different surfaces and/or adding implicit motor challenges eg. catching a ball. This
216 type of training integrates sensory information from visual, vestibular and proprioceptive
217 fields,^{40, 41} and provides a safe medium for addressing neuromuscular deficits after LAS.
218 Optimal rehabilitation should also involve a series of progressions, whereby exercises
219 eventually recreate more vulnerable conditions and environments. A common inciting event
220 for LAS is excessive ankle supination angle at initial foot contact.³ These errors are
221 underpinned by aberrations in biomechanical position and (pre)activation of the muscles prior
222 to ground contact; these can be addressed initially through explicit joint repositioning (JPS)
223 tasks in the open kinetic chain. This approach has been used successfully during sensorimotor
224 training at the shoulder joint^{42, 43} but surprisingly, we found that only 1.5% of exercises
225 specifically involved open chain training at the ankle complex.

226

227 It was also surprising that just over 18% of all exercises included a flight phase. These consisted
228 primarily of various jump exercises (20/34), such as single-leg jumps, forward jumps,
229 stationary jumps and side jumps. Seven of 34 exercises that included a flight phase were
230 running based, of which most involved straight line running, with agility exercises the least
231 represented (3/34). These findings are also disproportionate to the (re)injury mechanism, as
232 most non-contact LAS usually occur during jump landings, multidirectional running and
233 sudden changes of direction.¹⁸ To adequately prepare the patient for these challenges, it is
234 important that rehabilitation exercises move beyond closed chain postural control training, to
235 include more reactive or “perturbation” training and stretch-shortening activities. Again, this

236 should be done in a controlled and progressive fashion to ensure that neuromuscular
237 adaptations occur without placing the patient at risk of re-injury.

238

239 A related limitation in the current literature, is that most exercises comprised uniplanar,
240 sagittal dominant movements (47.6%). Common examples are dorsiflexion or plantarflexion
241 exercises, calf stretching and heel or toe raises. Re-establishing sagittal plane mobility and
242 strength is important for balance and functional performance tasks, such as running jumping
243 and landing^{44, 45}. However, exercises must also address impairments across other planes of
244 movement. Non-contact LAS mechanisms are multidirectional, but only 31.1% of all exercises
245 challenged more than one plane of motion, with the majority using sagittal-frontal plane
246 combination. Non-contact LAS occur by an inversion-internal rotation, around the frontal and
247 the transversal plane, with plantarflexion, around the sagittal plane.^{9, 37} Yet, only 4% of
248 exercises challenged the three planes of motion. Restricting exercises to the sagittal plane also
249 limits ligament recruitment and physiological adaptation.⁴⁶⁻⁴⁸ Incorporating multiplanar
250 movements aligns more with the unique anatomy, morphology and biomechanical properties
251 of the lateral ligaments. As connective tissues are mechano-responsive, inducing progressive
252 and multidirectional loading through exercise also provide a medium to stimulate healing and
253 alter tissue composition.⁴⁶

254

255 Patients with an ankle sprain exhibit decreased eversion peak power,⁴⁹ and reduced
256 concentric and eccentric eversion peak torque are risk factors for the development of CAI.⁵⁰
257 One-fifth of exercises targeted ankle muscle strength, but the majority were undertaken in
258 the sagittal plane, with only 12/177 exercises (6.8%) primarily addressed eversion muscle
259 strength. Peroneal reaction time can also be an influencing factor. Patients with a history of

260 LAS exhibit a delayed peroneal reaction time, failing to protect the ankle from a sudden
261 inversion perturbation.⁵¹ Exercises that addressed eversion muscle strength primarily involved
262 concentric loading, using an elastic resistance band. Previous studies suggest that a 4-week
263 elastic-resistance exercise-program failed to improve evertor muscle strength or peroneal
264 latency, in patients with a history of LAS.⁵² The multiple degrees of freedom of movement, at
265 the ankle complex can make it more difficult to isolate certain muscle groups, and optimal
266 strength training may require additional patient supervision, to ensure optimal training
267 technique.

268

269 Our main findings concur with similar scoping reviews undertaken in this field. Dischiavi et
270 al.¹⁵ examined over 1000 exercises used for preventing ACL/knee injuries; they reported that
271 most prescribed exercises did not address the task specific elements identified within ACL
272 injury mechanisms,¹⁵ such as single leg landing, trunk hip dissociation, and multiplanar
273 movements. Dischiavi and colleagues noted a reductionist approach to exercise prescription
274 across other musculoskeletal conditions. Their scoping reviews of the patellofemoral pain
275 (PFPS)¹⁴ and femoroacetabular impingement (FAI) literature,¹³ each concluded that the
276 prescribed rehabilitation exercises were too simplistic, lacked progression, and often failed to
277 reflect the etiology of the respective conditions. It seems there are consistent limitations in
278 rehabilitation content across the current musculoskeletal literature; this could be addressed
279 increasing the specificity, complexity and progression of the exercise content. The current
280 approach limits the effect size of the intervention, particularly in athletes, where exercise
281 progression is paramount for optimal rehabilitation.⁵³ Exercise programs must be developed

282 to incorporate more chaotic, sport-specific movements,⁵⁴ which eventually replicate key
283 features of injury mechanism.^{53, 55}

284

285 Limitations

286 Our key finding was that exercises prescribed after LAS do not incorporate complex tasks
287 associated with common LAS injury mechanisms. Exercise elements were classified based on
288 the impairment addressed, direction of movement, use of flight, and weight-bearing status.
289 This classification could have been subjective; but to minimise this, we aligned our methods
290 and definitions to three previous reviews.¹³⁻¹⁵ We must also acknowledge that our
291 classification criteria is informed primarily by mechanical constructs relevant to the injury
292 inciting event. This reductionist approach of discussing only biomechanical effects of
293 rehabilitation exercises deviates from the original biopsychosocial model.⁵⁶ Our criteria were
294 not exhaustive and the etiology of re-injury involves a complex interaction of several internal
295 and external risk factors^{16, 57, 58} These often include psychosocial impairments such as
296 kinesiophobia, fear-avoidance, decreased quality of life, perceived instability and self-
297 reported function.^{9, 59, 60} Current consensus guidelines such as ROAST and PAAS also highlight
298 the importance of using patient-reported outcome measures in the rehabilitation process and
299 return-to-sports decision making.^{17, 61} Future research should consider which psychosocial
300 impairments are addressed by the prescribed exercises in rehabilitation programs.

301 Conclusion

302 This review highlights that most rehabilitation exercises prescribed in current RCT's are
303 generic, simplistic, and do not fully reflect the pathomechanics of non-contact LAS. This could

304 introduce a ceiling effect for LAS rehabilitation. Developing exercise interventions that better
305 incorporate JPS training, multi-directional movements, flight phases and single limb landings,
306 would present a more progressive task-specific approach to rehabilitation, cumulating in a
307 greater reduction in re-injury risk. High quality prospective studies can determine the
308 feasibility and clinical effectiveness of using more complex exercise-based training after acute
309 LAS.

310 **Highlights:**

- 311 - Most rehabilitation exercises are generic and simplistic, across the sagittal plane.
- 312 - Key pathomechanics of a non-contact ankle sprain are not addressed by prescribed
- 313 exercises in current RCT's.

314 References

- 315 1. Gribble PA, Bleakley CM, Caulfield BM, *et al.* Evidence review for the 2016
316 International Ankle Consortium consensus statement on the prevalence, impact and long-
317 term consequences of lateral ankle sprains. *British journal of sports medicine*.
318 2016;50(24):1496-505.
- 319 2. Fong DT, Hong Y, Chan LK, *et al.* A systematic review on ankle injury and ankle sprain
320 in sports. *Sports Med*. 2007;37(1):73-94.
- 321 3. Herzog MM, Kerr ZY, Marshall SW, *et al.* Epidemiology of Ankle Sprains and Chronic
322 Ankle Instability. *J Athl Train*. 2019;54(6):603-10.
- 323 4. Herzog MM, Mack CD, Dreyer NA, *et al.* Ankle Sprains in the National Basketball
324 Association, 2013-2014 Through 2016-2017. *The American journal of sports medicine*.
325 2019;47(11):2651-8.
- 326 5. Verhagen EALM, Van der Beek AJ, Bouter LM, *et al.* A one season prospective cohort
327 study of volleyball injuries. *British journal of sports medicine*. 2004;38(4):477-81.
- 328 6. Wikstrom EA, Cain MS, Chandran A, *et al.* Lateral ankle sprain increases subsequent
329 ankle sprain risk: a systematic review. *J Athl Train*. 2020.
- 330 7. Attenborough AS, Hiller CE, Smith RM, *et al.* Chronic ankle instability in sporting
331 populations. *Sports Med*. 2014;44(11):1545-56.
- 332 8. Doherty C, Bleakley C, Delahunt E, *et al.* Treatment and prevention of acute and
333 recurrent ankle sprain: an overview of systematic reviews with meta-analysis. *British journal*
334 *of sports medicine*. 2017;51(2):113-25.
- 335 9. Hertel J, Corbett RO. An Updated Model of Chronic Ankle Instability. *J Athl Train*.
336 2019;54(6):572-88.
- 337 10. McKeon PO, Donovan L. A Perceptual Framework for Conservative Treatment and
338 Rehabilitation of Ankle Sprains: An Evidence-Based Paradigm Shift. *J Athl Train*.
339 2019;54(6):628-38.
- 340 11. Wagemans J, Bleakley C, Taeymans J, *et al.* Exercise-based rehabilitation reduces
341 reinjury following acute lateral ankle sprain: A systematic review update with meta-analysis.
342 *PloS one*. 2022;17(2):e0262023.
- 343 12. Bleakley CM, Taylor JB, Dischiavi SL, *et al.* Rehabilitation Exercises Reduce Reinjury
344 Post Ankle Sprain, But the Content and Parameters of an Optimal Exercise Program Have Yet
345 to Be Established: A Systematic Review and Meta-analysis. *Arch Phys Med Rehabil*.
346 2019;100(7):1367-75.
- 347 13. Wright AA, Tarara DT, Gisselman AS, *et al.* Do currently prescribed exercises reflect
348 contributing pathomechanics associated with femoroacetabular impingement syndrome? A
349 scoping review. *Physical therapy in sport : official journal of the Association of Chartered*
350 *Physiotherapists in Sports Medicine*. 2021;47:127-33.
- 351 14. Dischiavi SL, Wright AA, Tarara DT, *et al.* Do exercises for patellofemoral pain reflect
352 common injury mechanisms? A systematic review. *Journal of science and medicine in sport*.
353 2021;24(3):229-40.
- 354 15. Dischiavi SL, Wright AA, Heller RA, *et al.* Do ACL Injury Risk Reduction Exercises
355 Reflect Common Injury Mechanisms? A Scoping Review of Injury Prevention Programs.
356 *Sports health*. 2021:19417381211037966.

- 357 16. Vuurberg G, Hoorntje A, Wink LM, *et al.* Diagnosis, treatment and prevention of ankle
358 sprains: update of an evidence-based clinical guideline. *British journal of sports medicine*.
359 2018;52(15):956.
- 360 17. Delahunt E, Bleakley CM, Bossard DS, *et al.* Clinical assessment of acute lateral ankle
361 sprain injuries (ROAST): 2019 consensus statement and recommendations of the
362 International Ankle Consortium. *British journal of sports medicine*. 2018;52(20):1304-10.
- 363 18. Li Y, Ko J, Zhang S, *et al.* Biomechanics of ankle giving way: A case report of accidental
364 ankle giving way during the drop landing test. *J Sport Health Sci*. 2019;8(5):494-502.
- 365 19. Gehring D, Wissler S, Mornieux G, *et al.* How to sprain your ankle - a biomechanical
366 case report of an inversion trauma. *J Biomech*. 2013;46(1):175-8.
- 367 20. Fong DT, Hong Y, Shima Y, *et al.* Biomechanics of supination ankle sprain: a case
368 report of an accidental injury event in the laboratory. *The American journal of sports*
369 *medicine*. 2009;37(4):822-7.
- 370 21. Lysdal FG, Wang Y, Delahunt E, *et al.* What have we learnt from quantitative case
371 reports of acute lateral ankle sprains injuries and episodes of 'giving-way' of the ankle joint,
372 and what shall we further investigate? *Sport Biomech*. 2022;21(4):359-79.
- 373 22. Hultman K, Fältström A, Öberg U. The effect of early physiotherapy after an acute
374 ankle sprain. *Advances in Physiotherapy*. 2010;12(2):65-73.
- 375 23. Hupperets MD, Verhagen EA, van Mechelen W. Effect of unsupervised home based
376 proprioceptive training on recurrences of ankle sprain: randomised controlled trial. *Bmj*.
377 2009;339:b2684.
- 378 24. Lazarou L, Kofotolis N, Pafis G, *et al.* Effects of two proprioceptive training programs
379 on ankle range of motion, pain, functional and balance performance in individuals with ankle
380 sprain. *Journal of Back and Musculoskeletal Rehabilitation*. 2018;31:437-46.
- 381 25. Lazarou L, Kofotolis N, Malliou P, *et al.* Effects of two proprioceptive training
382 programs on joint position sense, strength, activation and recurrent injuries after ankle
383 sprains. *Isokinetics and Exercise Science*. 2017;25:289-300.
- 384 26. Mohammadi F. Comparison of 3 preventive methods to reduce the recurrence of
385 ankle inversion sprains in male soccer players. *The American journal of sports medicine*.
386 2007;35(6):922-6.
- 387 27. Holme E, Magnusson SP, Becher K, *et al.* The effect of supervised rehabilitation on
388 strength, postural sway, position sense and re-injury risk after acute ankle ligament sprain.
389 *Scand J Med Sci Sports*. 1999;9(2):104-9.
- 390 28. Janssen KW, van Mechelen W, Verhagen EA. Bracing superior to neuromuscular
391 training for the prevention of self-reported recurrent ankle sprains: a three-arm randomised
392 controlled trial. *British journal of sports medicine*. 2014;48(16):1235-9.
- 393 29. Van Reijen M, Vriend I, Zuidema V, *et al.* The "Strengthen your ankle" program to
394 prevent recurrent injuries: A randomized controlled trial aimed at long-term effectiveness.
395 *Journal of science and medicine in sport*. 2017;20(6):549-54.
- 396 30. Bleakley CM, O'Connor SR, Tully MA, *et al.* Effect of accelerated rehabilitation on
397 function after ankle sprain: randomised controlled trial. *Bmj*. 2010;340:c1964.
- 398 31. Punt IM, Ziltener JL, Monnin D, *et al.* Wii Fit™ exercise therapy for the rehabilitation
399 of ankle sprains: Its effect compared with physical therapy or no functional exercises at all.
400 *Scand J Med Sci Sports*. 2016;26(7):816-23.
- 401 32. Brison RJ, Day AG, Pelland L, *et al.* Effect of early supervised physiotherapy on
402 recovery from acute ankle sprain: randomised controlled trial. *BMJ*. 2016;355:i5650.

- 403 33. Kachanathu SJ, Hafez AR, Alenazi AM, *et al.* Wirksamkeit von Übungen in
404 geschlossenen und offenen kinematischen Ketten zur Rehabilitation von Distorsionen der
405 Knöchelregion. *Physikalische Medizin, Rehabilitationsmedizin, Kurortmedizin.*
406 2016;26(01):28-31.
- 407 34. van Rijn RM, van Os AG, Kleinrensink GJ, *et al.* Supervised exercises for adults with
408 acute lateral ankle sprain: a randomised controlled trial. *The British journal of general*
409 *practice : the journal of the Royal College of General Practitioners.* 2007;57(543):793-800.
- 410 35. Wester JU, Jespersen SM, Nielsen KD, *et al.* Wobble board training after partial
411 sprains of the lateral ligaments of the ankle: a prospective randomized study. *The Journal of*
412 *orthopaedic and sports physical therapy.* 1996;23(5):332-6.
- 413 36. Martin RL, Davenport TE, Fraser JJ, *et al.* Ankle Stability and Movement Coordination
414 Impairments: Lateral Ankle Ligament Sprains Revision 2021. *The Journal of orthopaedic and*
415 *sports physical therapy.* 2021;51(4):Cpg1-cpg80.
- 416 37. D'Hooghe P, Cruz F, Alkhelaifi K. Return to Play After a Lateral Ligament Ankle Sprain.
417 *Curr Rev Musculoskelet Med.* 2020;13(3):281-8.
- 418 38. Caldemeyer LE, Brown SM, Mulcahey MK. Neuromuscular training for the prevention
419 of ankle sprains in female athletes: a systematic review. *Phys Sportsmed.* 2020;48(4):363-9.
- 420 39. Zech A, Hubscher M, Vogt L, *et al.* Neuromuscular training for rehabilitation of sports
421 injuries: a systematic review. *Medicine and science in sports and exercise.* 2009;41(10):1831-
422 41.
- 423 40. Han J, Anson J, Waddington G, *et al.* The Role of Ankle Proprioception for Balance
424 Control in relation to Sports Performance and Injury. *BioMed research international.*
425 2015;2015:842804.
- 426 41. Røijezon U, Clark NC, Treleaven J. Proprioception in musculoskeletal rehabilitation.
427 Part 1: Basic science and principles of assessment and clinical interventions. *Man Ther.*
428 2015;20(3):368-77.
- 429 42. Rogol IM, Ernst G, Perrin DH. Open and closed kinetic chain exercises improve
430 shoulder joint reposition sense equally in healthy subjects. *J Athl Train.* 1998;33(4):315-8.
- 431 43. E SE, Lin YL, J HK, *et al.* Joint position sense - There's an app for that. *J Biomech.*
432 2016;49(14):3529-33.
- 433 44. Drewes LK, McKeon PO, Kerrigan DC, *et al.* Dorsiflexion deficit during jogging with
434 chronic ankle instability. *Journal of science and medicine in sport.* 2009;12(6):685-7.
- 435 45. Basnett CR, Hanish MJ, Wheeler TJ, *et al.* Ankle dorsiflexion range of motion
436 influences dynamic balance in individuals with chronic ankle instability. *Int J Sports Phys*
437 *Ther.* 2013;8(2):121-8.
- 438 46. Rein S, Hagert E, Hanisch U, *et al.* Immunohistochemical analysis of sensory nerve
439 endings in ankle ligaments: a cadaver study. *Cells, tissues, organs.* 2013;197(1):64-76.
- 440 47. Noyes FR, DeLucas JL, Torvik PJ. Biomechanics of anterior cruciate ligament failure:
441 an analysis of strain-rate sensitivity and mechanisms of failure in primates. *The Journal of*
442 *bone and joint surgery American volume.* 1974;56(2):236-53.
- 443 48. Yu J, Wong DW, Zhang H, *et al.* The influence of high-heeled shoes on strain and
444 tension force of the anterior talofibular ligament and plantar fascia during balanced standing
445 and walking. *Medical engineering & physics.* 2016;38(10):1152-6.
- 446 49. Pourkazemi F, Hiller C, Raymond J, *et al.* Using Balance Tests to Discriminate Between
447 Participants With a Recent Index Lateral Ankle Sprain and Healthy Control Participants: A
448 Cross-Sectional Study. *Journal of Athletic Training.* 2016;51(3):213-22.

- 449 50. Thompson C, Schabrun S, Romero R, *et al.* Factors Contributing to Chronic Ankle
450 Instability: A Systematic Review and Meta-Analysis of Systematic Reviews. *Sports Med.*
451 2018;48(1):189-205.
- 452 51. HOCH MC, MCKEON PO. Peroneal Reaction Time after Ankle Sprain: A Systematic
453 Review and Meta-analysis. *Medicine & Science in Sports & Exercise.* 2014;46(3):546-56.
- 454 52. Han K, Ricard MD. Effects of 4 Weeks of Elastic-Resistance Training on Ankle-Evertor
455 Strength and Latency. *Journal of Sport Rehabilitation.* 2011;20(2):157-73.
- 456 53. Blanchard S, Glasgow P. A theoretical model for exercise progressions as part of a
457 complex rehabilitation programme design. *British journal of sports medicine.*
458 2019;53(3):139-40.
- 459 54. Taberner M, Allen T, Cohen DD. Progressing rehabilitation after injury: consider the
460 'control-chaos continuum'. *British journal of sports medicine.* 2019;53(18):1132-6.
- 461 55. Otte FW, Millar SK, Klatt S. Skill Training Periodization in "Specialist" Sports Coaching-
462 An Introduction of the "PoST" Framework for Skill Development. *Frontiers in sports and*
463 *active living.* 2019;1:61.
- 464 56. Cormack B, Stilwell P, Coninx S, *et al.* The biopsychosocial model is lost in translation:
465 from misrepresentation to an enactive modernization. *Physiother Theory Pract.* 2022:1-16.
- 466 57. Bahr R, Holme I. Risk factors for sports injuries--a methodological approach. *British*
467 *journal of sports medicine.* 2003;37(5):384-92.
- 468 58. Verhagen E, van Dyk N, Clark N, *et al.* Do not throw the baby out with the bathwater;
469 screening can identify meaningful risk factors for sports injuries. *British journal of sports*
470 *medicine.* 2018;52(19):1223-4.
- 471 59. Houston MN, Van Lunen BL, Hoch MC. Health-related quality of life in individuals
472 with chronic ankle instability. *J Athl Train.* 2014;49(6):758-63.
- 473 60. Houston MN, Hoch JM, Hoch MC. College Athletes With Ankle Sprain History Exhibit
474 Greater Fear-Avoidance Beliefs. *J Sport Rehabil.* 2018;27(5):419-23.
- 475 61. Smith MD, Vicenzino B, Bahr R, *et al.* Return to sport decisions after an acute lateral
476 ankle sprain injury: introducing the PAASS framework-an international multidisciplinary
477 consensus. *British journal of sports medicine.* 2021.
- 478

Figure 1 : PRISMA flow diagram of the review process

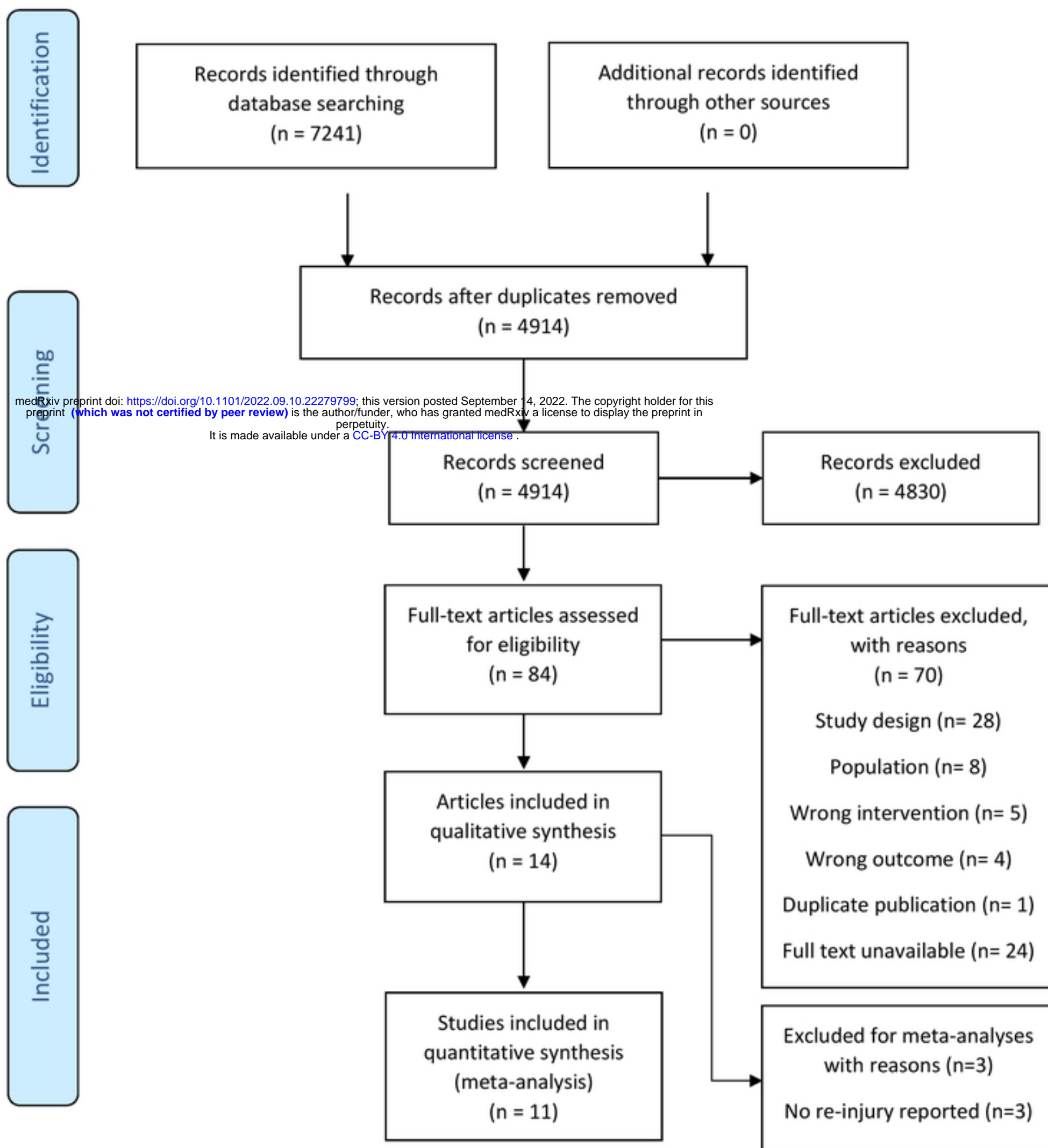
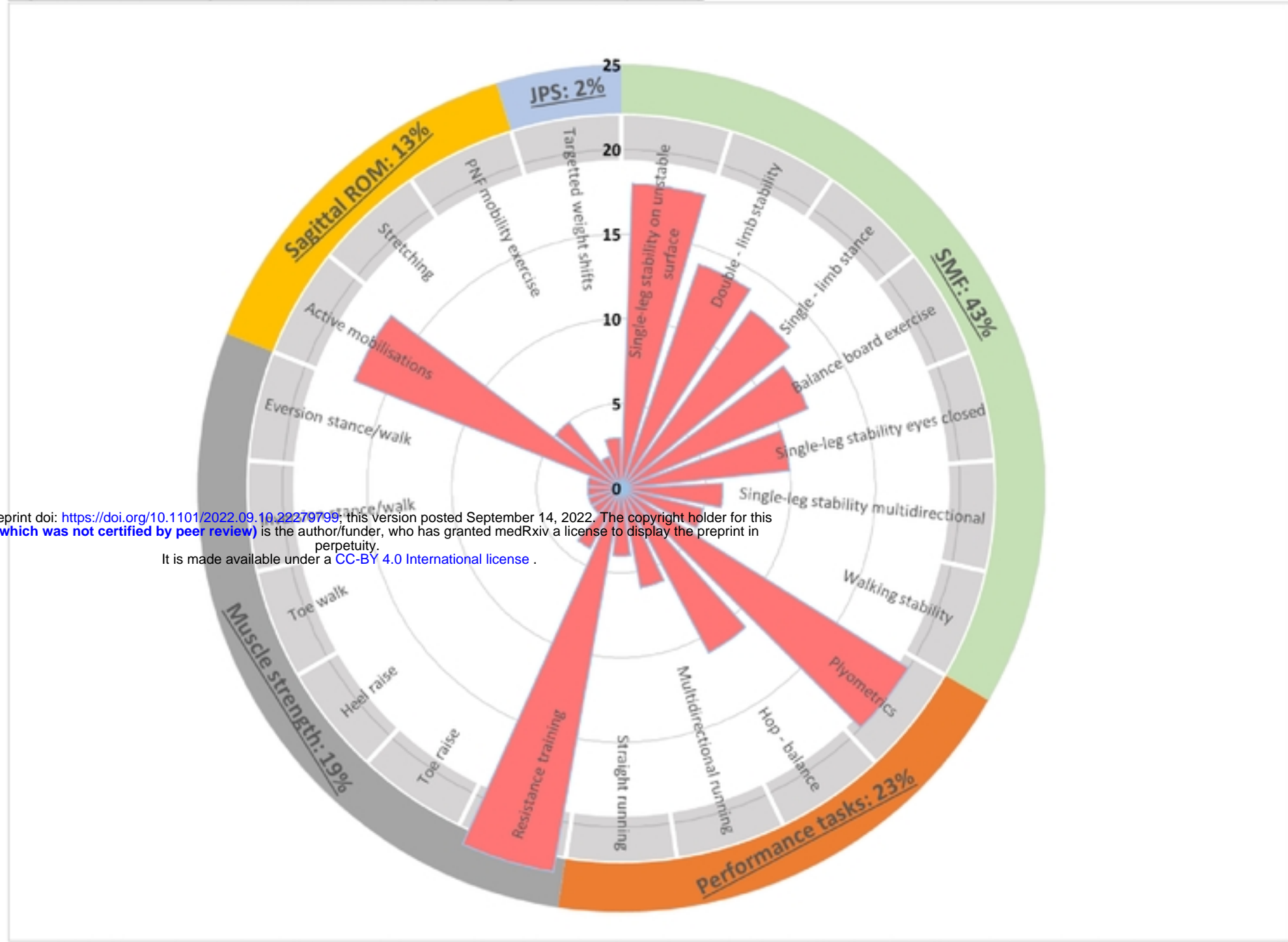


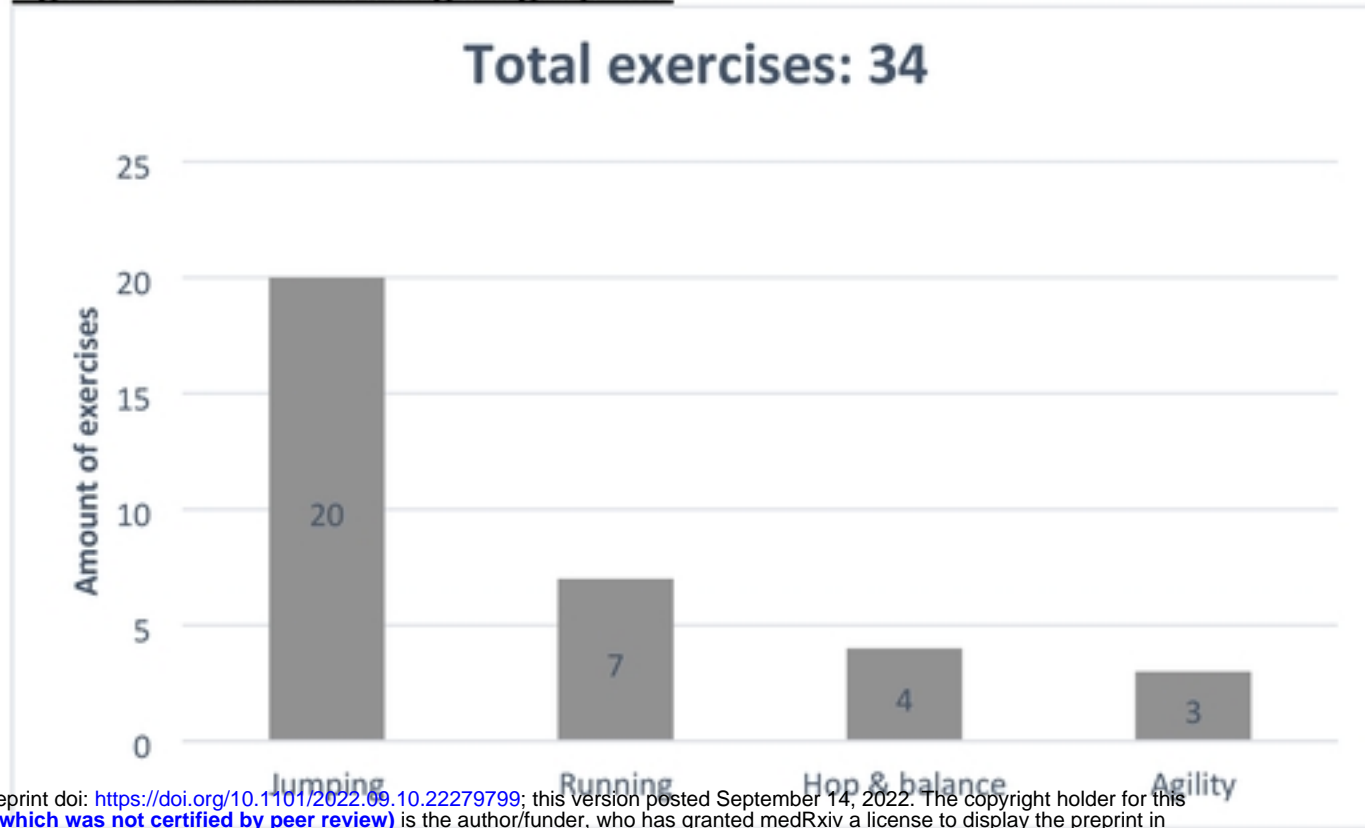
Figure 1: Clinical impairments with corresponding exercises (N=177)



medRxiv preprint doi: <https://doi.org/10.1101/2022.09.10.22279799>; this version posted September 14, 2022. The copyright holder for this preprint (which was not certified by peer review) is the author/funder, who has granted medRxiv a license to display the preprint in perpetuity. It is made available under a [CC-BY 4.0 International license](https://creativecommons.org/licenses/by/4.0/).

Legend: The donut chart (outer circle) depicts the proportion of impairments addressed by the included exercises; the wind rose bar chart (pink bars initiating from the centre) shows the different exercises that reflect each impairment and their number of occurrence.
Abbreviations: SMF= Sensory motor function; ROM = Range of Motion; JPS= Joint position sense

Figure 2: Exercises including a flight phase



medRxiv preprint doi: <https://doi.org/10.1101/2022.09.10.22279799>; this version posted September 14, 2022. The copyright holder for this preprint (which was not certified by peer review) is the author/funder, who has granted medRxiv a license to display the preprint in perpetuity. It is made available under a [CC-BY 4.0 International license](https://creativecommons.org/licenses/by/4.0/).