

Substance use, psychiatric symptoms, personal mastery, and social support among COVID-19 long haulers: A compensatory model

Cheuk Chi Tam¹, Shan Qiao, Camryn Garrett, Ran Zhang, Atefeh Aghaei, Abhishek Aggarwal, Xiaoming Li

South Carolina SmartState Center for Healthcare Quality, Department of Health Promotion, Education, and Behavior, Arnold School of Public Health, University of South Carolina, Discovery I, 915 Greene Street, Columbia, SC, 29208, United States

¹ Corresponding author at University of South Carolina, South Carolina SmartState Center for Healthcare Quality, Discovery I, Suite 408, 915 Greene Street, Columbia, South Carolina, 29208

Email address: ctam@mailbox.sc.edu

Role of funding source

The research was supported in part by the by *the National Institute of Allergy and Infectious Diseases* of the National Institutes of Health under award number R01AI127203-5S1. The content is solely the responsibility of the authors and does not necessarily represent the official views of the National Institutes of Health.

Contributors

Cheuk Chi Tam and Shan Qiao designed the study. Xiaoming Li developed the conceptual framework of the study. Cheuk Chi Tam and Camryn Garrett conducted the data collection, data cleaning, and statistical analyses. All authors contribute to the development of manuscript and approved the final version of the manuscript.

Conflict of interest

The authors have no conflicts of interest to report.

Abstract

Background: Substance use has become a critical health concern during the COVID-19 pandemic, and emerging attention has been paid to people with the persistent symptoms of COVID-19 (COVID-19 long haulers) due to their high vulnerability. However, scant research has investigated their substance use and relevant psychosocial factors. The current study was to (1) examine substance use behaviors (i.e., legal drug use, illicit drug use, and non-medical use of prescription drugs); and (2) assessed their associations with psychiatric symptoms (i.e., depression, anxiety, and post-traumatic stress disorder) and psychosocial factors (i.e., personal mastery and social support) among COVID-19 long haulers. **Methods:** In January – March 2022, 460 COVID-19 long haulers (50% female), with an average age of 32, completed online surveys regarding their demographics, substance use, psychiatric symptoms, and psychosocial factors. **Results:** In the past three months, the most commonly used or non-medically used substances were tobacco (82%) for legal drugs, cocaine (53%) for illicit drugs, and prescription opioids (67%) for prescription drugs. Structural equation modeling suggested that psychiatric symptoms were positively associated with substance use behaviors (β s = .38 to .68, p s < .001), while psychosocial factors were negatively associated with substance use behaviors (β s = -.61 to -.43, p s < .001). **Conclusion:** Substance use is common in COVID-19 long haulers and psychiatric symptoms are the risk factors. Personal mastery and social support appear to offer protection offsetting the psychiatric influences. Substance use prevention and mental health services for COVID-19 long haulers should attend to personal mastery and social support.

KEY WORDS: substance use, cigarette, alcohol, illicit drugs, prescription drugs, Long COVID, COVID-19 long haulers, persistent symptoms of COVID-19, psychiatric symptoms, personal mastery, social support

1. Introduction

The COVID-19 pandemic began in March 2020 and continues to persist two and a half years later with the development of multiple virus variants. SARS-CoV-2 is a coronavirus virus that in many cases causes respiratory symptoms (e.g., fever/chills) but also musculoskeletal (e.g., fatigue) and gastrointestinal symptoms (Centers for Disease Control and Prevention, 2022). COVID-19 long-haulers are defined as those who experience the persistence of COVID-19 induced symptoms (Long COVID) for more than four weeks after infection (de-las-Peñas et al., 2021; Schmidt, 2021). As of July 6, 2022, there have been 87,899,721 total cases of COVID-19 (CDC, 2022a). Of those infected with COVID-19, 13.3% experience persistent symptoms one month or longer after infection with 2.5% reporting symptoms persisting for three or more months (CDC, 2022b).

Due to the increasing burden of Long-COVID, attention has focused on the health issues of COVID-19 long haulers. One emerging health concern is their vulnerability to substance use. The COVID-19 literature has highlighted the exponential rates of individuals engaging in substance use (i.e., 13% increase since COVID-19) and drug overdose fatalities (i.e., 30% increase from 2019) in the United States (US) (Kariisa et al., 2022; McKnight-Eily et al., 2021). These increases have been found in the use or misuse of numerous classes of drugs, including tobacco/cigarette products (Kalkhoran et al., 2022), alcohol (Hansel et al., 2022), illicit drugs (Boehnke et al., 2021; Diaz-Martinez et al., 2021; European Monitoring Centre for Drugs and Drug Addiction, 2020; Groshkova et al., 2020), and prescription drugs (Dodge et al., 2021). Notably, the substance use issue could be significant among COVID-19 long haulers for two reasons. First, those with history of substance use disorder (SUD) are more likely to be infected by COVID-19 and develop severe symptoms than those without a history of SUD (Volkow,

2020; Wang et al., 2021). Second, the management of persistent symptoms (e.g., headache and myalgias) requires many COVID-19 long haulers to utilize prescription medications, which may interact with or develop a history of SUD. Existing evidence has shown that COVID-19 long haulers are prescribed opioids and benzodiazepines at higher rates (i.e., an extra 8-22 times per 1,000 patients) than patients without a COVID-19 diagnosis (Al-Aly et al., 2021). As such, the substance use literature turns its attention to COVID-19 long haulers, and, indeed, a recent cohort study of long haulers found a high rate of problematic alcohol use (45.5%) 2-4 months after their initial clinic visit, and such a rate even increased (71.8%) at the 7-14 months follow-up (Broughan et al., 2022). Despite such a high vulnerability, available literature on various substance uses in COVID-19 long haulers is still lacking. In efforts to address this gap, a study that investigates substance use and its related factors among COVID-19 long haulers appears to be warranted.

The compensatory model of psychological resilience (Stevenson & Zimmerman, 2005) may offer a conceptual framework to examine factors associated with substance use in COVID-19 long haulers. This model depicts a psychosocial mechanism on maladaptive responses (e.g., substance use) to adverse conditions (e.g., long COVID), suggesting that maladaptive responses occur under the influences of risk factors (e.g., emotional distress), while protective factors (e.g., psychosocial resources) counteract to offset risk factors. This model has been widely applied within health science research for understanding psychosocial influences on substance use (e.g., alcohol, cigarette, and illicit drugs) (Ostaszewski & Zimmerman, 2006; Pisarska et al., 2016). Accordingly, given the tendency for reliance on maladaptive responses, the understanding of substance use in COVID-19 long haulers would benefit from examining a compensatory model on a set of psychosocial risk and protective factors.

Psychiatric symptoms could be a robust risk factor for substance use among COVID-19 long haulers. The COVID-19 pandemic has taken a significant toll on mental health (e.g., persistently elevated rates of reported serious psychiatric symptoms since the onset of the pandemic; 12-19%) (McGinty et al., 2022). Due to this toll many individuals have turned to substance use to cope with their psychiatric distress (Rogers et al., 2020). The global literature has demonstrated that psychiatric symptoms (i.e., depression, anxiety, and post-traumatic stress disorder [PTSD]) were common triggers of use or misuse of substances (i.e., cigarettes, alcohol, and illicit drugs) during the COVID-19 pandemic (Currie, 2021; Horigian et al., 2021; Roberts et al., 2021; Tam et al., 2021). Due to their substantially high risk for psychiatric symptoms, substance use coping among COVID-19 long haulers is concerning. A review and meta-analysis on post-COVID-19 studies documented the high prevalence of anxiety (7% to 63%), depression (4% to 31%), and PTSD (12% to 46.9%) among COVID-19 long haulers where the prevalence significantly increased over time (i.e., at the one-year follow-up) (Premraj et al., 2022; Shanbehzadeh et al., 2021). Existing evidence also indicates that, compared to those who were not diagnosed with COVID-19, COVID-19 survivors reported significantly higher levels of depression and anxiety (Gallagher et al., 2020). Despite these preliminary findings, scant research has examined the association between psychiatric symptoms and substance use among COVID-19 long haulers.

Personal mastery and social support could be core intra- and interpersonal resilient resources for COVID-19 long haulers, serving as protective factors against substance use. Personal mastery refers to individuals' perceived ability to have control over and adapt to the influential forces in their lives (Pearlin & Schooler, 1978). Personal mastery has been identified as an essential proxy of personal psychological strengths (e.g., self-esteem, sense of control, and

positive appraisal of stress) and promoting resistance to substance use (Greenwood & Manning, 2017; Majer et al., 2004; Spencer & Patrick, 2009; Stoddard et al., 2019). On the other hand, social support refers to perceived external possessions and resources (i.e., material, emotional, or tangible) that are assessable to individuals, within their social networks, to deal with stressors (Cutrona & Suhr, 1994). Social support has been associated with effective coping with distress and promoting resistance to substance use (Boateng-Poku et al., 2020; Cano et al., 2017). Due to their promising effects, these two factors are viewed as particularly beneficial for people with chronic symptoms (e.g., COVID-19 long haulers). Literature on individuals with chronic illnesses (e.g., diabetes, lung disease, and rheumatoid arthritis) have indicated that high personal mastery and social support are associated with better management of stress related to persistent symptoms (e.g., pain, fatigue, or glycemic control) (Penninx et al., 1998; Strom & Egede, 2012; Younger et al., 2008). Within the COVID-19 literature, the protective roles of personal mastery and social support have been documented regarding the use of alcohol and tobacco products (Whittaker & Kingston, 2022). Given these merits in coping among those with other chronic conditions, personal mastery and social support could serve as protective factors among COVID-19 long haulers, further necessitating a study to examine their associations with substance use behaviors.

1.1 The present study

Given the scarcity of studies investigating substance use and its related factors among COVID-19 long haulers, the present study aimed to (1) examine recent (i.e., past-three-month) use or misuse of substances across a variety of classes, including legal drug use (e.g., alcohol and tobacco products), illicit drugs (e.g., cocaine and inhalants), and non-medical use of prescription drugs (NMUPD; e.g., opioids and stimulants); (2) examine the associations between substance

use behaviors and psychiatric/psychosocial factors among COVID-19 long haulers. Applying the compensatory model, it was hypothesized that (1) psychiatric symptoms, including depression, anxiety, and PTSD, act as risk factors with a positive association with substance use and (2) personal mastery and social support act as protective factors with a negative association with substance use (see Figure 1).

2. Methods

2.1 Participants and procedures

From January 13, 2022 to March 26, 2022, participants were recruited utilizing a convenience sampling approach in COVID-19-related support groups on social media (i.e., Facebook groups). Administrators of the online support groups were contacted for preemptive permission to post recruitment materials (i.e., brief study description, survey link, and flyer) in the groups. The inclusion criteria of recruitment included: (1) aged 18 years or older, (2) living in the US, and (3) infected with COVID-19 and experienced at least one persistent symptom four weeks or longer after the COVID-19 diagnosis. Prior to the survey, participants were provided with informed consent forms regarding voluntary nature and confidentiality. After obtaining consent, participants were navigated to a self-administered online survey which was conducted anonymously via Redcap platform. Upon completion, participants were able to opt-in to a raffle-based incentive for a gift card (USD \$40). A total of 556 participants provided responses, while surveys from 181 participants were eliminated for not meeting inclusion criteria (e.g., not identified as a COVID-19 long hauler) or completing less than half of the survey, resulting in a sample size of 460 in the current study. The study protocol was approved by the Institutional Review Board at the University of South Carolina.

2.2 Measures

2.2.1 Demographics

Demographic information collected included age, gender, race/ethnicity, education (e.g., a high school degree or equivalent), and annual income (USD).

2.2.2 Substance use

Participants were asked to respond on a 13-item measure to report substances that they used in the past three months at the time of survey response. This measure was adapted from the Alcohol, Smoking, and Substance Involvement Screening Test (ASSIST) (WHO ASSIST Working Group, 2002). The measure includes individual items for drugs or medications spanning a variety of classes, including legal drugs (e.g., tobacco), illicit drugs (e.g., cocaine), and prescription opioids (e.g., OxyContin), prescription sedatives (e.g., Ambien), prescription anxiolytics (e.g., Ativan), and prescription stimulants (e.g., Ritalin). Questions for legal and illicit drug items were about the frequency of use, while these for prescription drugs were about the frequency of use without a physician's prescription. Participants responded to each item on a 5-option Likert scale with response options ranging from 1 (never) to 5 (almost daily). For use in the descriptive statistics, responses were dichotomized to report "ever use" (0 = never; 1 = have used/non-medical used) and "weekly use or more" (0 = never, 1 = have used/non-medical used once a week or more often) on each individual drug item. Continuous scores on each item were used for data analyses.

2.2.3 Anxiety

Anxiety was assessed with the General Anxiety Disorder (GAD-7) 7-item survey which included 4 response options ranging from 0 (not at all) to 4 (nearly every day) (Spitzer et al., 2006). Participants were asked to indicate to what extent they felt nervous or worried too much about a situation in the past two weeks (e.g., "Not being able to stop or control worrying"). The

sum scores were generated, with higher scores indicating greater levels of anxiety. Cronbach's alpha for this scale was .59 in the current study.

2.2.4 Depression

Depression was assessed with the Patient Health Questionnaire 9-item (PHQ-9) scale including 4 response options ranging from not at all (0) to nearly every day (3) (Kroenke et al., 2001). Items asked about the level of depressive moods that participants experienced in the past two weeks (e.g., "*Feeling down, depressed, and hopeless*"). Sum scores were calculated, with a higher score showing a higher level of depression. Cronbach's alpha for this scale was .57 in the current study.

2.2.5 PTSD

PTSD was assessed with an adapted version of the Primary Care PTSD Screen for the DSM-5 5-item scale (PC-PTSD-5) with binary response options yes or no (Prins et al., 2016). Participants were asked to report how stressful life events during the COVID-19 pandemic affected them in the past month at the time of survey response (e.g., "*Had nightmares about event[s] or thought about the event[s] when you did not want to*"). Sum scores were generated, with higher scores representing greater levels of PTSD. Cronbach's alpha for this scale was .48 in the current study.

2.2.6 Personal Mastery

Personal mastery was measured with a 4-item subscale of the Sense of Control Scale. Participants were asked to select one of 7 response options ranging from strongly disagree (1) to strongly agree (4) (Lachman & Weaver, 1997). Items assessed individual sentiments of ability and confidence to complete general things as well as evaluated their certainty towards the future (e.g., "*What happens to me in the future mostly depends on me*"). Sum scores were calculated,

with higher scores indicating greater levels of personal mastery. Cronbach's alpha for this scale was .54 in the current study.

2.2.7 Social Support

Social support was assessed using the modified Medical Outcomes Study Social Support Survey (mMOS-SS) 8-item scale (Sherbourne & Stewart, 1991). Items assessed the presence of support in participants' lives through their perceptions of having others around them to provide support in times of need (e.g., "*Someone to take you to the doctor if you need it*"), provide understanding (e.g., "*Someone who understand your problems*"), and to have a good time with (e.g., "*Someone to have a good time with*"). Response options to the items ranged from none of the time (1) to all of the time (5). Sum scores were generated, with higher scores indicating higher levels of present social support. Cronbach's alpha for this scale was .61 in the current study.

2.3 Statistical analysis

Data were screened in terms of multivariate outliers, missing data, and normality. Descriptive statistics were employed on demographic factors, 13 individual items of substance use, psychiatric symptoms (i.e., depression, anxiety, and PTSD), personal mastery, and social support.

We used structural equation modeling (SEM) with the maximum likelihood estimation (ML) to examine the hypothesized associations. As guided by Anderson and Gerbing (1988) (1988), we used confirmatory factor analysis (CFA) to examine a measurement model, which evaluated the latent structures of study variables (Figure 2). The model was anticipated to be trimmed in accordance with the modification indices (cutoff value > 10) of the suggested

relationships if this was supported by previous research. The hypothesized associations of psychiatric symptoms and psychosocial factors with legal drug use, illicit drug use, and NMUPD were then examined using structural modeling when controlling for demographics (Figure 1). The goodness of model fit for the measurement model and structural model was determined according to various indices including the *Chi-square value/degree of freedom (df)*, the *comparative fit index (CFI)*, the *Tucker-Lewis index (TLI)*, the *root mean square of approximation (RMSEA)*, and the *standardized root mean square of residual (SRMR)*. As suggested by Meyers et al. (2016), a model has an adequate or good fit to data when *Chi-square value/df* is lower than 3 (good), *CFI* is higher than .90 (adequate) or .95 (good), *TLI* is higher than .90 (adequate) or .95 (good), *RMSEA* is lower than .08 (adequate) or .05 (good), and *SRMR* is lower than .08 (good).

3. Results

3.1 Demographics and descriptive statistics

The mean age of COVID-19 long haulers was 32 years ($SD = 6.19$). About a half of the sample were female (50.22%). The majority of participants were White/Caucasian (70.00%), followed by Black/African American (17.20%), and Hispanic/Latino (8.90%). The majority had a bachelor's degree (59.57%) and reported an annual income between \$50,000 and \$100,000 (56.09%). Participants reported a mean score of 10.18 ($SD = 3.51$) for anxiety, 13.00 ($SD = 3.94$) for depression, 2.51 ($SD = 1.42$) for PTSD, 17.38 ($SD = 4.05$) for personal mastery, and 25.28 ($SD = 4.68$) for social support (see Table 1).

3.2 Substance use

In the past three months, the commonly used legal drugs were tobacco or cigarettes (81.74% ever use; 33.04% weekly use), followed by alcohol (80.87% ever use; 32.82% weekly use), e-cigarettes or vaping (69.57% ever use; 23.26% weekly use), and cannabis (35.87% ever use; 25.43% weekly use). Cocaine (52.39% ever use; 18.91% weekly use) was the most commonly used illicit drug, followed by inhalants (50.22% ever use; 19.34% weekly use), methamphetamine (47.17% ever use; 20% weekly use), hallucinogens (45.87% ever use; 17.61% weekly use), and street opioids (44.57% ever use; 15% weekly use). The commonly misused prescription drugs were opioids (67.39% ever use; 17.83% weekly use), followed by sedatives (65% ever use; 25% weekly use), anxiolytics (61.74% ever use; 20.65% weekly use), and stimulants (58.91% ever use; 21.52% weekly use).

3.3 Measurement model

CFA was used to examine the measurement model among latent structures for study variables. The initial model suggested a generally good fit to data ($CFI = .96$; $TLI = .95$; $RMSEA = .04$; $SRMR = .06$). However, in accordance with the modification indices, the model could be improved by adding a correlation of manifest factors between alcohol and cigarette use. This correlation is in line with COVID-19 research, which indicates that alcohol consumption was higher in smokers during the pandemic (Schafer et al., 2022). We reran CFA on the new measurement model as suggested.

As shown in Figure 2, the results suggest that all manifest factor variables were significantly loaded onto their corresponding latent factors ($ps < .001$). The latent factors for three classes of substance use were positively inter-correlated ($rs = .84 - .96$; $ps < .001$). Psychiatric symptoms were positively correlated with legal drug use ($r = .44$, $p < .001$), illicit drug use ($r = .16$, $p = .004$), and NMUPD ($r = .48$, $p < .001$). Psychosocial factors were negatively

associated with legal drug use ($r = -.18, p < .001$), illicit drug use ($r = -.44, p = .04$), and NMUPD ($r = -.20, p = .003$). Psychiatric symptoms were positively correlated with psychosocial factors ($r = .49, p < .001$). The model-fit indices were .97 for *CFI*, .96 for *TLI*, .03 for *RMSEA*, and .06 for *SRMR*, suggesting an overall good fit to the data.

3.4 Structural equation modeling

SEM was used to examine the hypothesized model among substance use psychiatric symptoms, and psychosocial factors, when controlling for demographic factors (i.e., age, gender, race/ethnicity, and annual). The standardized regression coefficients between latent variables are presented in Figure 3. The latent structures in the measurement model were applied to the structural model. Results suggest that the structural model explained 69% variance in legal drug use, 57% in illicit drug use, and 74% in NMUPD. The model-fit indices suggest an overall good fit to the data ($CFI = .93$, $TLI = .91$, $RMSEA = .05$, $SRMR = .07$, $Chi-square/df = 1.96$). The regression coefficients suggest that psychiatric symptoms were positively associated with legal drug use ($\beta = .59, p < .001$), illicit drug use ($\beta = .38, p < .001$), and NMUPD ($\beta = .68, p < .001$). In contrast, psychosocial factors were negatively associated with legal drug use ($\beta = -.43, p < .001$), illicit drug use ($\beta = -.51, p < .001$), and NMUPD ($\beta = -.61, p < .001$).

4. Discussion

The present study explored the patterns of using and misusing substances across different classes (i.e., legal, illicit, and prescription drugs) among COVID-19 long haulers and examined psychosocial risk (i.e., depression, anxiety, and PTSD) and protective factors (i.e., social support and personal mastery) associated with their substance use behaviors. Although emerging attention has been paid to psycho-behavioral health in COVID-19 long haulers, to the best of our

knowledge, this is one of the first attempt to document substance use profiles in this population and investigate the relevant psychosocial determinants.

Our findings suggest overall high rates of substance use in COVID-19 long haulers, with more than half of participants reporting using or misusing any classes of substances in the past three months and more than 15% reporting heavy use (i.e., weekly use or more). This reflects the previous findings of high vulnerability, revealing that people infected with COVID-19 were 20%-34% more likely to develop substance use disorders (i.e., opioid use disorder and alcohol use disorder) compared to those without infection (Xie et al., 2022). Notably, our results seem to be higher than the rates in COVID-19 survivors (e.g., 15% current smoking; 2.6% to 23% past-year alcohol and drug use disorders) (Na et al., 2021; Xie et al., 2022) or people living with chronic conditions (13% substance use disorder) (Wu et al., 2018). Specifically, we found that the commonly used substances were tobacco or alcohol products (i.e., 70% - 82%, cigarettes/e-cigarettes; 81%, alcohol). This is aligned with recent clinical research, indicating that 72% of COVID-19 long haulers reporting past-year problematic alcohol use (Broughan et al., 2022). It is noteworthy that our data also show high prevalence in NMUPD (e.g., prescription opioids; 68% ever use, 18% weekly use or more) and illicit drug use (e.g., cocaine; 52% ever use, 33% weekly use or more). This merits a particular concern given its negative influences on their persistent symptoms (e.g., respiratory infections) (Gryczynski et al., 2016; Palmer et al., 2012; Zaami et al., 2020). These findings suggest that COVID-19 long haulers appear to be a subgroup in people infected by COVID-19 who are significantly susceptible to substance use and misuse, implying the necessity to include substance use assessment in risk screen tools for patients with persistent symptoms of COVID-19 at the clinical settings (Volkow, 2020; Wang et al., 2021).

Our findings suggest that psychiatric distress (i.e., depression, anxiety, and PTSD) is a risk factor significantly associated with a variety of substance use behaviors, including legal drug use, illicit drug use, and NMUPD, in COVID-19 long haulers. This is an extension to previous research, which showed that individuals turned to substance use to manage psychological distress associated with the COVID-19 pandemic or chronic conditions (e.g., HIV, Hepatitis C, and chronic pain) (Ahmed et al., 2020; Arteta et al., 2016; Moitra et al., 2020; Tam et al., 2021). This may be explained by the self-medication theory of addiction (Khantzian, 1997). The theory posits that individuals with conditions (e.g., persistent symptoms) that limit their capacity of self-regulation or executive functioning would be susceptible to or overwhelmed by the exposure of stressors. As such, to self-medicate psychological distress, individuals would resort to the drugs that offer a promptly change in their emotional state or positive emotion experiences (e.g., euphoria), and even develop dependence on the drugs. It is worth noting that COVID-19 long haulers can be significantly vulnerable to this maladaptive coping pathway since they encounter various challenges related to the symptoms, such as sick-leave, worry about health of themselves, career/job uncertainty, and social stigma (Ballering et al., 2021; Byrne, 2022; Håkansson, 2021). Notably, the interruptions in mental health care due to the societal lock-down during the pandemic would further aggravate their vulnerability (Moreno et al., 2020). These highlight the necessity to attend to psychiatric symptoms in developing care and treatment plans for COVID-19 long haulers.

Importantly, our results indicate that personal mastery and social support are negatively associated with substance use behaviors among COVID-19 long haulers, suggesting the protection of these psychosocial resources. This is consistent with previous substance use research, indicating that personal mastery was a critical cognitive resource to regulate distress,

which was beneficial to abstinence or substance use reduction (Majer et al., 2004; Spencer & Patrick, 2009; Stoddard et al., 2019) (Majer, Jason, & Olson, 2004; Spence & Patrick, 2009; Stoddard, Peirce, Hurd et al., 2020; Greenwood & Manning, 2016). Our finding is also aligned with a recent COVID-19 study, suggesting that social support was a protective factor against problematic substance use to cope with the pandemic (Whittaker & Kingston, 2022). The beneficial effects of these psychosocial resources appear to support the transactional theory of stress and coping (Folkman, 2013). This theory suggests that individuals' behavioral responses to stressors are dependent on their cognitive appraisal on the availability of resources to cope, while the resources can be intra- or interpersonal. If individuals perceived sufficient resources (e.g., high personal mastery and social support), they would experience lower negative moods and be unlikely to exhibit maladaptive coping (e.g., substance use). Given their protection from the risk, these two psychosocial resources have been identified as important factors in resilience-building intervention programs for people with chronic conditions (Cal et al., 2015; Hassani et al., 2017; Kim et al., 2018). Accordingly, to reduce substance use risk, resilience-based interventions tailored for distress management and psychosocial well-being enhancement would be warranted for COVID-19 long haulers.

There are several approaches that may be feasible to facilitate resilience factors and reduce substance use risk for COVID-19 long haulers. First, personal mastery and mental health outcomes could be improved through the implementation of mindfulness interventions with a focus on exploring intrinsic and extrinsic loci of control. Existing evidence has shown that the mindfulness-based trial is efficacious in controlling symptoms (e.g., pain severity), promoting psychological health, and reducing prescription opioid misuse risk among patients with chronic pain (Garland et al., 2019). Second, social support networks among COVID-19 long haulers may

be developed through online social networking platforms, which encourage the fostering of communities among individuals who share the common experience of persisting COVID-19 symptoms. Indeed, our recent preliminary study of an online mindfulness-based walking intervention among COVID-19 long haulers suggested that the social-media- and mindfulness-based approaches were efficacious in pain control improvement and psychological health promotion (i.e., emotion regulation and stress relief) (Qiao et al., 2022). Future research would benefit from adopting these approaches to a large-scale trial among COVID-19 long haulers, in efforts to decrease the burden of psychiatric symptoms and substance use risk.

The current study had several methodological limitations. First, our model could not draw conclusions about causality due to the cross-sectional design. Second, our findings were based on self-reported data, which may be subject to response bias (e.g., social desirability). Third, some compounding effects were not controlled in the model since the relevant factors were not measured, such as pre-pandemic symptomatology of psychiatric symptoms and SUDs. Fourth, given a convenience sample, the current study may be subject to self-selection bias and our findings have limited generalizability. Also, the Internet-based survey methodology would facilitate candor when assessing risk behaviors (Cook et al., 2000), this may be limited by only reaching COVID-19 long haulers on social media. Fifth, the PTSD measure in the current study showed low internal consistency (Cronbach's alpha of .48), although this is consistent with previous research on this scale (Li et al., 2019). To address these limitations, future research should consider applying a randomized sampling approach, a longitudinal design, a combination with in-person recruitment approach (e.g., at clinics), the collection from non-self-reported data (e.g., health records), and an extensive screening of the history of psychiatric health disorders and SUDs.

Despite these limitations, as one of the first attempt to examine the substance use profile and relevant psychosocial factors among COVID-19 long haulers, the current study adds to the growing literature on psycho-behavioral influences of the COVID-19 pandemic. Our findings offer an extension to recent COVID-19 long hauler research, suggesting high prevalence not only in legal drug use (e.g., alcohol) but also in illicit drug use (e.g., Cocaine) and NMUPD (e.g., prescription opioids). Our SEM model suggests that substance use behaviors are driven by psychiatric symptoms, which has been a significant concern in COVID-19 long haulers. Importantly, personal mastery and social support appear to provide protection from the psychiatric influences on substance use, which may inform future research to reduce substance use risk among COVID-19 long haulers using approaches beneficial to these factors, such as mindfulness-based intervention and social-media-based trials.

References

- Ahmed, M. Z., Ahmed, O., Aibao, Z., Hanbin, S., Siyu, L., & Ahmad, A. (2020). Epidemic of COVID-19 in China and associated psychological problems. *Asian journal of psychiatry*, 51, 102092.
- Al-Aly, Z., Xie, Y., & Bowe, B. (2021). High-dimensional characterization of post-acute sequelae of COVID-19. *Nature*, 594(7862), 259-264.
- Anderson, J. C., & Gerbing, D. W. (1988). Structural equation modeling in practice: A review and recommended two-step approach. *Psychological bulletin*, 103(3), 411.
- Arteta, J., Cobos, B., Hu, Y., Jordan, K., & Howard, K. (2016). Evaluation of how depression and anxiety mediate the relationship between pain catastrophizing and prescription opioid misuse in a chronic pain population. *Pain Medicine*, 17(2), 295-303.
- Ballering, A., Hartman, T. O., & Rosmalen, J. (2021). Long COVID-19, persistent somatic symptoms and social stigmatisation. *J Epidemiol Community Health*, 75(6), 603-604.
- Boateng-Poku, A., Benca-Bachman, C. E., Najera, D. D., Whitfield, K. E., Taylor, J. L., Thorpe Jr, R. J., & Palmer, R. H. (2020). The role of social support on the effects of stress and depression on African American tobacco and alcohol use. *Drug and alcohol dependence*, 209, 107926.
- Boehnke, K. F., McAfee, J., Ackerman, J. M., & Kruger, D. J. (2021). Medication and substance use increases among people using cannabis medically during the COVID-19 pandemic. *International Journal of Drug Policy*, 92, 103053.

- Broughan, J., McCombe, G., O’Kelly, B., Avramovic, G., Fawsitt, R., Glaspy, S., Higgins, M., McHugh, T., Vidal, L., & Woo, J. (2022). Mental health and alcohol use among patients attending a post-COVID-19 follow-up clinic: a cohort study. *HRB Open Research*, 5(16), 16.
- Byrne, E. A. (2022). Understanding long COVID: Nosology, social attitudes and stigma. *Brain, Behavior, and Immunity*, 99, 17-24.
- Cal, S. F., Sá, L. R. d., Glustak, M. E., & Santiago, M. B. (2015). Resilience in chronic diseases: A systematic review. *Cogent Psychology*, 2(1), 1024928.
- Cano, M. A., Sánchez, M., Trepka, M. J., Dillon, F. R., Sheehan, D. M., Rojas, P., Kanamori, M. J., Huang, H., Auf, R., & De La Rosa, M. (2017). Immigration stress and alcohol use severity among recently immigrated Hispanic adults: Examining moderating effects of gender, immigration status, and social support. *Journal of Clinical Psychology*, 73(3), 294-307.
- CDC. (2022a). *COVID Data Tracker*. Retrieved April 13 from <https://covid.cdc.gov/covid-data-tracker>
- CDC. (2022b). *Post-COVID Conditions*. Retrieved June 17 from <https://www.cdc.gov/coronavirus/2019-ncov/long-term-effects/index.html>
- Centers for Disease Control and Prevention. (2022). *Coronavirus Disease 2019 (COVID-19) – Symptoms*. Retrieved June 28 from <https://www.cdc.gov/coronavirus/2019-ncov/symptoms-testing/symptoms.html>
- Cook, C., Heath, F., & Thompson, R. L. (2000). A meta-analysis of response rates in web-or internet-based surveys. *Educational and psychological measurement*, 60(6), 821-836.

Currie, C. L. (2021). Adult PTSD symptoms and substance use during Wave 1 of the COVID-19 pandemic. *Addictive Behaviors Reports*, 13, 100341.

Cutrona, C. E., & Suhr, J. A. (1994). Social support communication in the context of marriage: an analysis of couples' supportive interactions.

de-las-Peñas, C. F., Palacios-Ceña, D., Gómez-Mayordomo, V., Cuadrado, M. L., & Florencio, L. L. (2021). Defining Post-COVID Symptoms (Post-Acute COVID, Long COVID, Persistent Post-COVID): An Integrative Classification. *IJERPH*, 18(5), 1-9.

Diaz-Martinez, J., Tamargo, J. A., Delgado-Enciso, I., Liu, Q., Acuña, L., Laverde, E., Barbieri, M. A., Trepka, M. J., Campa, A., & Siminski, S. (2021). Resilience, anxiety, stress, and substance use patterns during COVID-19 pandemic in the Miami adult studies on HIV (MASH) cohort. *AIDS and Behavior*, 25(11), 3658-3668.

Dodge, K. A., Skinner, A. T., Godwin, J., Bai, Y., Lansford, J. E., Copeland, W. E., Goodman, W. B., McMahon, R. J., Goulter, N., & Bornstein, M. H. (2021). Impact of the COVID-19 pandemic on substance use among adults without children, parents, and adolescents. *Addictive Behaviors Reports*, 14, 100388.

European Monitoring Centre for Drugs and Drug Addiction. (2020). *Impact of COVID-19 on patterns of drug use and drugrelated harms in Europe*. Retrieved November 21 from https://www.emcdda.europa.eu/system/files/publications/13130/EMCDDA-Trendspotter-Covid-19-Wave-2_1.pdf

Folkman, S. (2013). Stress: Appraisal and Coping. In M. D. Gellman & J. R. Turner (Eds.), *Encyclopedia of Behavioral Medicine* (pp. 1913-1915). Springer New York.
https://doi.org/10.1007/978-1-4419-1005-9_215

- Gallagher, M. W., Zvolensky, M. J., Long, L. J., Rogers, A. H., & Garey, L. (2020). The impact of Covid-19 experiences and associated stress on anxiety, depression, and functional impairment in American adults. *Cognitive Therapy and Research*, 44(6), 1043-1051.
- Garland, E. L., Hanley, A. W., Riquino, M. R., Reese, S. E., Baker, A. K., Salas, K., Yack, B. P., Bedford, C. E., Bryan, M. A., & Atchley, R. (2019). Mindfulness-oriented recovery enhancement reduces opioid misuse risk via analgesic and positive psychological mechanisms: A randomized controlled trial. *Journal of Consulting and Clinical Psychology*, 87(10), 927.
- Greenwood, R. M., & Manning, R. M. (2017). Mastery matters: Consumer choice, psychiatric symptoms and problematic substance use among adults with histories of homelessness. *Health & Social Care in the Community*, 25(3), 1050-1060.
- Groshkova, T., Stoian, T., Cunningham, A., Griffiths, P., Singleton, N., & Sedefov, R. (2020). Will the current COVID-19 pandemic impact on long-term cannabis buying practices? *Journal of addiction medicine*.
- Gryczynski, J., Schwartz, R. P., O'Grady, K. E., Restivo, L., Mitchell, S. G., & Jaffe, J. H. (2016). Understanding patterns of high-cost health care use across different substance user groups. *Health Affairs*, 35(1), 12-19.
- Håkansson, A. (2021). Post-COVID syndrome: Need to include risk of addiction in research and multi-disciplinary clinical work. *Psychiatry Research*, 301, 113961.
- Hansel, T. C., Saltzman, L. Y., Melton, P. A., Clark, T. L., & Bordnick, P. S. (2022). COVID-19 behavioral health and quality of life. *Scientific Reports*, 12(1), 1-10.

- Hassani, P., Izadi-Avanji, F.-S., Rakhshan, M., & Majd, H. A. (2017). A phenomenological study on resilience of the elderly suffering from chronic disease: a qualitative study. *Psychology research and behavior management*, 10, 59.
- Horigian, V. E., Schmidt, R. D., & Feaster, D. J. (2021). Loneliness, mental health, and substance use among US young adults during COVID-19. *Journal of psychoactive drugs*, 53(1), 1-9.
- Kalkhoran, S. M., Levy, D. E., & Rigotti, N. A. (2022). Smoking and e-cigarette use among US adults during the COVID-19 pandemic. *American journal of preventive medicine*, 62(3), 341-349.
- Kariisa, M., Davis, N. L., Kumar, S., Seth, P., Mattson, C. L., Chowdhury, F., & Jones, C. M. (2022). Vital signs: drug overdose deaths, by selected sociodemographic and social determinants of health characteristics—25 states and the District of Columbia, 2019–2020. *Morbidity and Mortality Weekly Report*, 71(29), 940.
- Khantzian, E. J. (1997). The self-medication hypothesis of substance use disorders: A reconsideration and recent applications. *Harvard review of psychiatry*, 4(5), 231-244.
- Kim, G. M., Lim, J. Y., Kim, E. J., & Kim, S. S. (2018). A model of adaptation for families of elderly patients with dementia: focusing on family resilience. *Aging & mental health*, 22(10), 1295-1303.
- Kroenke, K., Spitzer, R. L., & Williams, J. B. (2001). The PHQ-9: validity of a brief depression severity measure. *Journal of general internal medicine*, 16(9), 606-613.
- Lachman, M., & Weaver, S. (1997). Midlife Development Inventory (MIDI) Personality scales: Scale construction and scoring (Technical Report). Waltham, MA: Brandeis University, Psychology Department. In.

- Li, J., Zhang, W., Chen, W., Yuan, H., Zhang, S., Tian, M., & Qu, Z. (2019). Applications of the Chinese version of the primary care PTSD screen for DSM-5 (PC-PTSD-5) for children. *Journal of affective disorders*, 254, 109-114.
- Majer, J. M., Jason, L. A., & Olson, B. D. (2004). Optimism, abstinence self-efficacy, and self-mastery: A comparative analysis of cognitive resources. *Assessment*, 11(1), 57-63.
- McGinty, E. E., Presskreischer, R., Han, H., & Barry, C. L. (2022). Trends in Psychological Distress Among US Adults During Different Phases of the COVID-19 Pandemic. *JAMA network open*, 5(1), e2144776-e2144776.
- McKnight-Eily, L. R., Okoro, C. A., Strine, T. W., Verlenden, J., Hollis, N. D., Njai, R., Mitchell, E. W., Board, A., Puddy, R., & Thomas, C. (2021). Racial and ethnic disparities in the prevalence of stress and worry, mental health conditions, and increased substance use among adults during the COVID-19 pandemic—United States, April and May 2020. *Morbidity and Mortality Weekly Report*, 70(5), 162.
- Meyers, L. S., Gamst, G., & Guarino, A. J. (2016). *Applied multivariate research: Design and interpretation*. Sage publications.
- Moitra, E., Anderson, B. J., Herman, D. S., Hayaki, J., Pinkston, M. M., Kim, H. N., & Stein, M. D. (2020). Examination of using alcohol to cope, depressive symptoms, and perceived social support in persons with HIV and Hepatitis C. *AIDS care*, 32(10), 1238-1245.
- Moreno, C., Wykes, T., Galderisi, S., Nordentoft, M., Crossley, N., Jones, N., Cannon, M., Correll, C. U., Byrne, L., & Carr, S. (2020). How mental health care should change as a consequence of the COVID-19 pandemic. *The Lancet Psychiatry*, 7(9), 813-824.

- Na, P. J., Norman, S. B., Nichter, B., Hill, M. L., Rosen, M. I., Petrakis, I. L., & Pietrzak, R. H. (2021). Prevalence, risk and protective factors of alcohol use disorder during the COVID-19 pandemic in US military veterans. *Drug and alcohol dependence*, 225, 108818.
- Ostaszewski, K., & Zimmerman, M. A. (2006). The effects of cumulative risks and promotive factors on urban adolescent alcohol and other drug use: A longitudinal study of resiliency. *American journal of community psychology*, 38(3), 237-249.
- Palmer, R. S., McMahon, T. J., Moreggi, D. I., Rounsaville, B. J., & Ball, S. A. (2012). College student drug use: Patterns, concerns, consequences, and interest in intervention. *Journal of college student development*, 53(1).
- Pearlin, L. I., & Schooler, C. (1978). The structure of coping. *Journal of health and social behavior*, 2-21.
- Penninx, B. W., Van Tilburg, T., Boeke, A. J. P., Deeg, D. J., Kriegsman, D. M., & Van Eijk, J. T. M. (1998). Effects of social support and personal coping resources on depressive symptoms: different for various chronic diseases? *Health psychology*, 17(6), 551.
- Pisarska, A., Eisman, A., Ostaszewski, K., & Zimmerman, M. A. (2016). Alcohol and cigarette use among warsaw adolescents: factors associated with risk and resilience. *Substance use & misuse*, 51(10), 1283-1296.
- Premraj, L., Kannapadi, N. V., Briggs, J., Seal, S. M., Battaglini, D., Fanning, J., Suen, J., Robba, C., Fraser, J., & Cho, S.-M. (2022). Mid and long-term neurological and neuropsychiatric manifestations of post-COVID-19 syndrome: A meta-analysis. *Journal of the neurological sciences*, 434, 120162.
- Prins, A., Bovin, M. J., Smolenski, D. J., Marx, B. P., Kimerling, R., Jenkins-Guarnieri, M. A., Kaloupek, D. G., Schnurr, P. P., Kaiser, A. P., & Leyva, Y. E. (2016). The primary care

- PTSD screen for DSM-5 (PC-PTSD-5): development and evaluation within a veteran primary care sample. *Journal of general internal medicine*, 31(10), 1206-1211.
- Qiao, S., Aggarwal, A., Taylor, S., Tam, C. C., Yang, C.-H., & Li, X. (2022). *Feasibility of a digitally delivering mindfulness-based walking intervention among long haulers* APHA 2022 Annual Meeting and Expo, Boston, MA.
- Roberts, A., Rogers, J., Mason, R., Siriwardena, A. N., Hogue, T., Whitley, G. A., & Law, G. R. (2021). Alcohol and other substance use during the COVID-19 pandemic: A systematic review. *Drug and alcohol dependence*, 229, 109150.
- Rogers, A. H., Shepherd, J. M., Garey, L., & Zvolensky, M. J. (2020). Psychological factors associated with substance use initiation during the COVID-19 pandemic. *Psychiatry Research*, 293, 113407.
- Schmidt, C. (2021). COVID-19 long haulers. *Nature biotechnology*, 1.
- Shanbehzadeh, S., Tavahomi, M., Zanjari, N., Ebrahimi-Takamjani, I., & Amiri-Arimi, S. (2021). Physical and mental health complications post-COVID-19: Scoping review. *Journal of psychosomatic research*, 147, 110525.
- Sherbourne, C. D., & Stewart, A. L. (1991). The MOS social support survey. *Social science & medicine*, 32(6), 705-714.
- Spencer, S. M., & Patrick, J. H. (2009). Social support and personal mastery as protective resources during emerging adulthood. *Journal of Adult Development*, 16(4), 191-198.
- Spitzer, R. L., Kroenke, K., Williams, J. B., & Löwe, B. (2006). A brief measure for assessing generalized anxiety disorder: the GAD-7. *Archives of internal medicine*, 166(10), 1092-1097.

Stevenson, F., & Zimmerman, M. A. (2005). ADOLESCENT RESILIENCE: A Framework for Understanding Healthy Development in the Face of Risk. *Annual Review of Public Health*, 26, 399-419. <https://www.proquest.com/scholarly-journals/adolescent-resilience-framework-understanding/docview/235233320/se-2>

https://pascal-usc.primo.exlibrisgroup.com/openurl/01PASCAL_USCCOL/01PASCAL_USCCOL:USC?genre=article&atitle=ADOLESCENT+RESILIENCE%3A+A+Framework+for+Understanding+Healthy+Development+in+the+Face+of+Risk&author=Stevenson%2C+Fergus%3BZimmerman%2C+Marc+A&volume=26&issue=&page=399&date=2005&rft.btitle=&rft.jtitle=Annual+Review+of+Public+Health&issn=0163-7525&isbn=&sid=ProQ%3AAbiologicalscijournals_15760295

Stoddard, S. A., Pierce, J., Hurd, N. M., Bauermeister, J. A., & Zimmerman, M. A. (2019). Purpose and mastery as predictors of perceived health and substance use problems. *Journal of community psychology*, 47(6), 1514-1529.

Strom, J. L., & Egede, L. E. (2012). The impact of social support on outcomes in adult patients with type 2 diabetes: a systematic review. *Current diabetes reports*, 12(6), 769-781.

Tam, C. C., Ye, Z., Wang, Y., Li, X., & Lin, D. (2021). Self-care behaviors, drinking, and smoking to cope with psychological distress during COVID-19 among Chinese college students: the role of resilience. *Psychology & Health*, 1-20.

Volkow, N. D. (2020). Collision of the COVID-19 and addiction epidemics. In (Vol. 173, pp. 61-62): American College of Physicians.

Wang, Q. Q., Kaelber, D. C., Xu, R., & Volkow, N. D. (2021). COVID-19 risk and outcomes in patients with substance use disorders: analyses from electronic health records in the United States. *Molecular psychiatry*, 26(1), 30-39.

Whittaker, F., & Kingston, S. (2022). Stress, social support, and substance use in the COVID-19 pandemic. *Translational Issues in Psychological Science*.

WHO ASSIST Working Group. (2002). The alcohol, smoking and substance involvement screening test (ASSIST): development, reliability and feasibility. *Addiction*, 97(9), 1183-1194.

Wu, L.-T., Zhu, H., & Ghitza, U. E. (2018). Multicomorbidity of chronic diseases and substance use disorders and their association with hospitalization: Results from electronic health records data. *Drug and alcohol dependence*, 192, 316-323.

Xie, Y., Xu, E., & Al-Aly, Z. (2022). Risks of mental health outcomes in people with covid-19: cohort study. *bmj*, 376.

Younger, J., Finan, P., Zautra, A., Davis, M., & Reich, J. (2008). Personal mastery predicts pain, stress, fatigue, and blood pressure in adults with rheumatoid arthritis. *Psychology and Health*, 23(5), 515-535.

Zaami, S., Marinelli, E., & Vari, M. R. (2020). New trends of substance abuse during COVID-19 pandemic: an international perspective. *Frontiers in Psychiatry*, 11, 700.

Table 1.

Descriptive statistics of demographic characteristics, substance use, psychiatric symptoms, and psychosocial factors among COVID-19 long haulers ($n = 460$)

Variables	Mean (SD) or n (%)
Age, Mean (SD)	32 (6.19)
Gender, n (%)	
Female	231 (50.22%)
Male	225 (48.91%)
Other/ Prefer not to say	4 (0.87%)
Race/ Ethnicity, n (%)	
White/Caucasian	322 (70.00%)
Black/African American	79 (17.20%)
Hispanic/Latino	41 (8.90%)
Asian	4 (0.90%)
Native American/Alaskan Native; Native Hawaiian Pacific Islander	18 (3.90%)
Education, n (%)	
Highschool degree or equivalent	14 (3.04%)
Some college, but no degree	94 (20.43%)
Associates degree	60 (13.04%)
Bachelor's degree	274 (59.57%)
Post graduate degree or above	18 (3.91%)
Annual Income, n (%)	
< \$10,000 to \$24,999	27 (5.87 %)
\$25,000 to \$49,999	164 (35.65%)
\$50,000 to \$100,000	258 (56.09%)
>\$100,000	11 (2.39%)
Substance use in the past three months	
Legal drug use	
Tobacco/cigarettes, Mean (SD)	2.87 (1.30)
Ever use, n (%)	376 (81.74%)
Weekly use or more, n (%)	152 (33.04%)
Alcohol, Mean (SD)	2.86 (1.27)
Ever use, n (%)	372 (80.87%)
Weekly use or more, n (%)	151 (32.82%)
Cannabis, Mean (SD)	2.4 (1.36)
Ever use, n (%)	295 (35.87%)
Weekly use or more, n (%)	117 (25.43%)
E-cigarettes/ vaping, Mean (SD)	2.45 (1.29)
Ever use, n (%)	320 (69.57%)
Weekly use or more, n (%)	107 (23.26%)
Illicit drug use	
Cocaine, Mean (SD)	2.12 (1.31)

Ever use, <i>n</i> (%)	241 (52.39%)
Weekly use or more, <i>n</i> (%)	87 (18.91%)
Methamphetamine, <i>Mean</i> (<i>SD</i>)	2.07 (1.38)
Ever use, <i>n</i> (%)	217 (47.17%)
Weekly use or more, <i>n</i> (%)	92 (20%)
Inhalants, <i>Mean</i> (<i>SD</i>)	2.1 (1.35)
Ever use, <i>n</i> (%)	231 (50.22%)
Weekly use or more, <i>n</i> (%)	89 (19.34%)
Hallucinogens, <i>Mean</i> (<i>SD</i>)	2.02 (1.34)
Ever use, <i>n</i> (%)	211 (45.87%)
Weekly use or more, <i>n</i> (%)	81 (17.61%)
Street opioids, <i>Mean</i> (<i>SD</i>)	1.93 (1.26)
Ever use, <i>n</i> (%)	205 (44.57%)
Weekly use or more, <i>n</i> (%)	69 (15%)
NMUPD	
Use Prescription opioids without prescription, <i>Mean</i> (<i>SD</i>)	2.3 (1.22)
Ever use, <i>n</i> (%)	310 (67.39%)
Weekly use or more, <i>n</i> (%)	82 (17.83%)
Use Prescription sedatives without prescription, <i>Mean</i> (<i>SD</i>)	2.4 (1.35)
Ever use, <i>n</i> (%)	299 (65%)
Weekly use or more, <i>n</i> (%)	115 (25%)
Use Prescription anxiolytics without prescription, <i>Mean</i> (<i>SD</i>)	2.29 (1.31%)
Ever use, <i>n</i> (%)	284 (61.74%)
Weekly use or more, <i>n</i> (%)	95 (20.65%)
Use Prescription stimulants without a prescription, <i>Mean</i> (<i>SD</i>)	2.31 (1.37)
Ever use, <i>n</i> (%)	271 (58.91%)
Weekly use or more, <i>n</i> (%)	99 (21.52%)
Psychiatric symptoms	
Anxiety, <i>Mean</i> (<i>SD</i>)	10.18 (3.51)
Depression, <i>Mean</i> (<i>SD</i>)	13 (3.94)
PTSD, <i>Mean</i> (<i>SD</i>)	2.51 (1.42)
Psychosocial factors	
Personal mastery, <i>Mean</i> (<i>SD</i>)	17.38 (4.05)
Social support, <i>Mean</i> (<i>SD</i>)	25.28 (4.68)

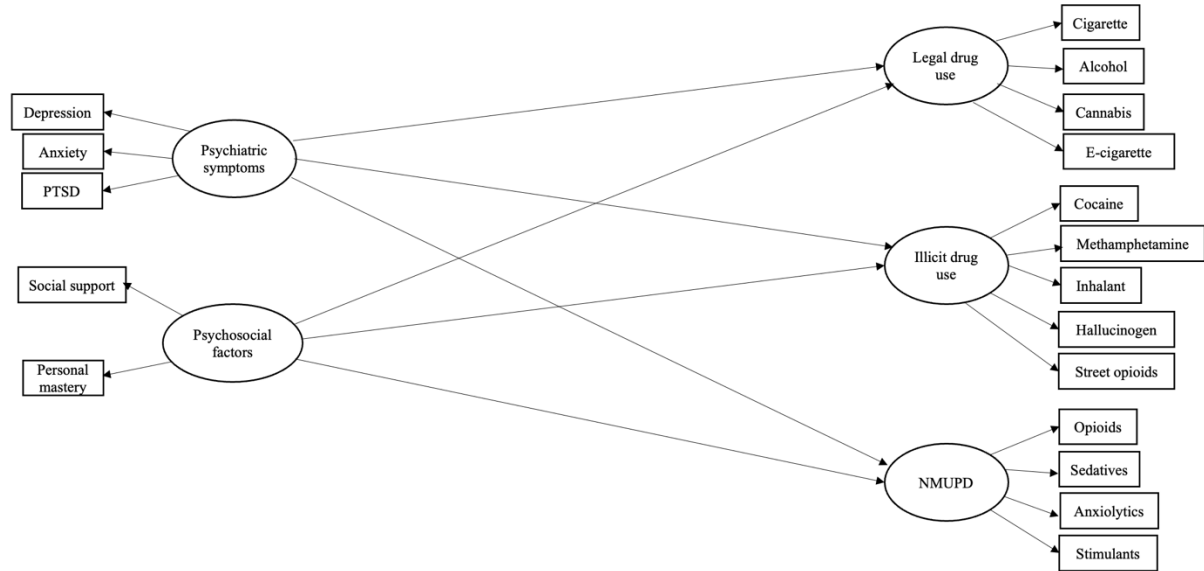


Figure 1. Hypothesized model of the associations of psychiatric symptoms and psychosocial factors with substance use variables among COVID long haulers

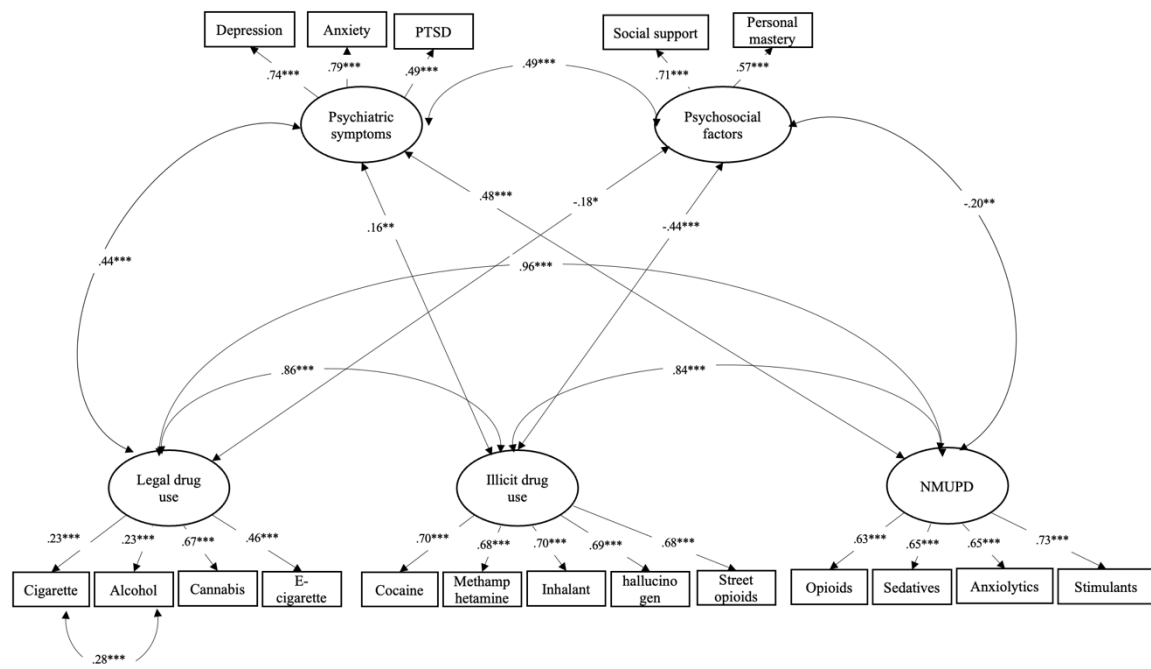


Figure 2. Measurement model among substance use variables, psychiatric symptoms, and psychosocial factors among COVID long haulers ($n = 460$)

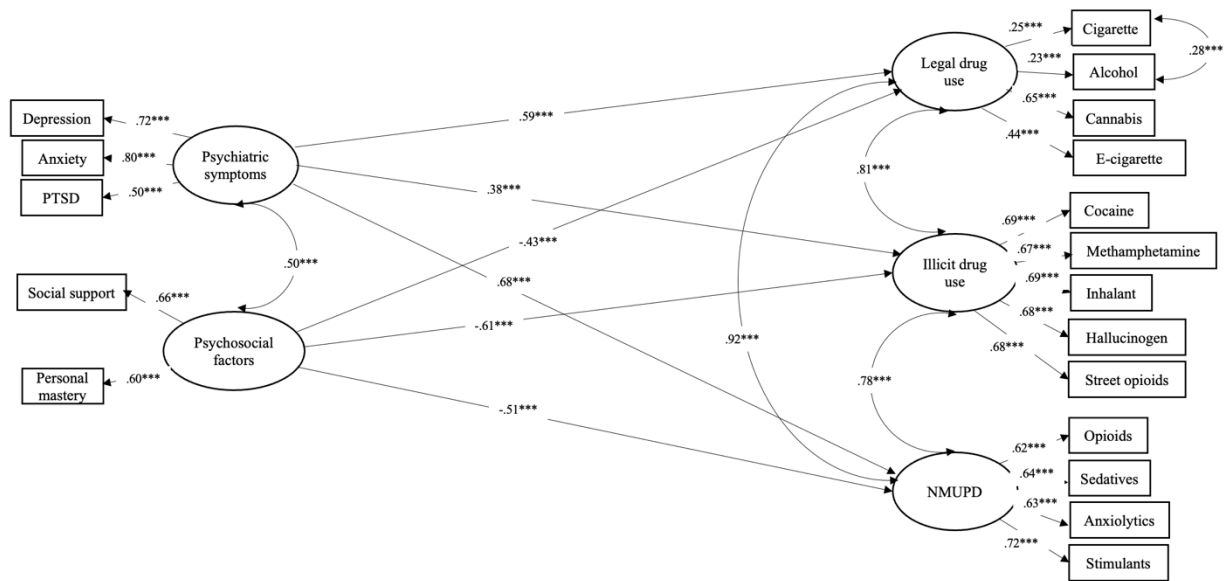


Figure 3. Structural equation modeling on the associations of psychiatric symptoms and psychosocial factors with substance use variables among COVID long haulers, after controlling for demographics (i.e., age, gender, race/ethnicity, and annual income) ($n = 460$)