

Biallelic *STAB1* pathogenic variants cause hereditary hyperferritinemia

Running head: *STAB1* mutations and hyperferritinemia

Authors:

Edoardo Monfrini^{*1,2}, Sara Pelucchi^{*3}, Maija Hollmén⁴, Miro Viitala⁴, Raffaella Mariani⁵, Francesca Bertola⁶, Silvia Majore⁷, Alessio Di Fonzo², Alberto Piperno^{5,8}

*co-first authorship

Affiliations:

1. Dino Ferrari Center, Department of Pathophysiology and Transplantation, University of Milano, Milano, Italy.
2. Foundation IRCCS Cà Granda Ospedale Maggiore Policlinico, Neurology Unit, Milano, Italy.
3. School of Medicine and Surgery, University of Milano-Bicocca, Monza, Italy.
4. MediCity Research Laboratory and InFLAMES flagship, University of Turku, Turku, Finland.
5. Centre for Rare Disease – Disorders of Iron Metabolism, ASST-Monza, San Gerardo Hospital, European Reference Network – EuroBloodNet, Monza, Italy.
6. Cytogenetics and Medical Genetics, ASST-Monza, San Gerardo Hospital, Monza, Italy.
7. Medical Genetics, Department of Molecular Medicine, Sapienza University, San Camillo-Forlanini Hospital, Roma, Italy.
8. Centro Ricerca Tettamanti, Monza, Italy.

Corresponding author:

Prof. Alberto Piperno

email: alberto.piperno@unimib.it

Tel.: +39 3396332915

Keywords: *Stabilin-1*, *Feritin*, *Hyperferritinemia*, *Iron*, *Genetics*

Words count - Abstract: 219; Manuscript: 2483

Tables: 2

Figures: 3

References: 38

Abbreviations:

ELISA: Enzyme-Linked ImmunoSorbent Assay

FFPE: Formalin-Fixed Paraffin-Embedded

GWAS: Genome-Wide Association Studies

STAB1: STABilin-1 gene

TSAT: Transferrin SATuration

WES: Whole-Exome Sequencing

Abstract

Serum ferritin measurement is a routine laboratory test to indirectly evaluate body iron content. However, many additional factors may elevate serum ferritin levels disproportionally to iron stores. Hyperferritinemia is a frequent finding in several conditions, both genetic and acquired. Despite the long history of clinical use, fundamental aspects of the biology of serum ferritin are still unclear. We studied eleven healthy subjects from eight different families presenting unexplained hyperferritinemia without iron overload. To detect the genetic cause of hyperferritinemia we carried out whole-exome sequencing. Immunohistochemistry and flow cytometry assays were performed on patient liver biopsies and monocyte-macrophages to confirm the pathogenic role of the identified candidate variants. Through a combined approach of whole-exome sequencing and homozygosity mapping, we found biallelic candidate *STAB1* variants in ten subjects from seven families. *STAB1* encodes the multifunctional scavenger receptor stabilin-1. Immunohistochemical studies and flow cytometry analyses showed absent or markedly reduced stabilin-1 in patient liver samples, monocytes and monocyte-derived macrophages. We present biallelic *STAB1* mutations as a new cause of inherited hyperferritinemia without iron overload suggesting the existence of new and unexpected function of stabilin-1 in ferritin metabolism.

In conclusion, our findings strongly support biallelic *STAB1* mutations as a novel genetic cause of inherited hyperferritinemia without iron overload and suggest the existence of a new and unexpected function of stabilin-1 in ferritin metabolism.

Introduction

Hyperferritinemia is a frequent finding in clinical practice and often requires an extensive diagnostic workup. A large spectrum of conditions, both genetic and acquired, associated or not with iron overload, displays high serum ferritin¹⁻³. The diagnostic strategy to reveal the cause of hyperferritinemia includes family and personal medical history, biochemical and genetic tests, and evaluation of liver iron by direct (biopsy) or indirect (quantitative magnetic resonance) methods¹.

Despite this complex and time-consuming approach, often the precise etiology remains elusive.

From the molecular point of view, cytosolic ferritin is a 24-subunit protein complex composed of two different subunits, termed H (heavy) and L (light) which are coded by two different genes⁴.

Ferritin expression in mammals is regulated by iron through a well-characterized mechanism of coordinated cytosolic post-transcriptional regulation⁵. In addition to iron, ferritin synthesis is regulated by cytokines during development, cellular differentiation, proliferation, and inflammation⁶. Cytokine-dependent control is particularly relevant to inflammation because ferritin is an acute-phase reactant and several pro-inflammatory cytokines stimulate its synthesis^{6,7}.

In mammals, a small amount of ferritin is present in a secreted form in serum. It mostly consists of variably glycosylated L-ferritin and trace amounts of H-ferritin^{8,9}. Different from cytosolic ferritin, extracellular ferritin is relatively iron-poor^{8,9}. For many years, serum ferritin measurement has become a routine laboratory test to indirectly evaluate iron stores, although it is known that many additional factors, including inflammation, infection, and liver diseases, dietary and metabolic abnormalities – all of which may elevate serum ferritin – complicate its interpretation^{1,2,10}. Despite this long history of clinical use, fundamental aspects of the biology of serum ferritin are still unclear. For example, tissue of origin, secretory pathway, receptor interactions, clearance, and functions remain topics of active debate¹¹⁻¹³. It has been hypothesized that ferritin clearance occurs through two different routes: direct uptake by specific ferritin receptors and indirect uptake by ferritin-

binding proteins¹⁴. So far, studies have led to the identification of ferritin receptors such as TIM2, SCARA5, and TFR1¹⁵⁻¹⁷. TIM2 has no known human ortholog, and specifically bind H-ferritin, SCARA5 is a L-ferritin specific receptor that is required for the development of specific cell types in the embryonic kidney, and TFR1 was also found to bind H-ferritin in human cell lines.

In 2017 we described several Italian subjects with unexplained isolated hyperferritinemia¹⁸. Four probands had affected siblings, but no affected parents or offspring suggesting the existence of an inherited form of hyperferritinemia without iron overload manifesting as an autosomal recessive trait. We are now able to reveal the presence of biallelic pathogenic variants affecting the multifunctional scavenger receptor stabilin-1 gene (*STAB1*) in most of those patients suggesting that stabilin-1 has a primary role in the regulation of serum ferritin levels in humans.

Materials and Methods

Patients

Of the twelve subjects originally reported by Ravasi *et al.*¹⁸, eleven were available for this study and underwent whole-exome sequencing (WES). They are all Italians and belong to eight different families presenting unexplained hyperferritinemia without iron overload. Their demographic and clinical data have been previously reported¹⁸ and are summarized in Table 1. These subjects showed levels of serum ferritin markedly higher than expected according to age and gender, ranging from 365 ng/mL to 4654 µg/L. Transferrin saturation (TSAT) was normal (range 20 - 41%), as well as the other laboratory parameters (blood count, liver function tests, metabolic and inflammatory indices). Quantification of liver iron by magnetic resonance showed normal values. Family history collection revealed distant consanguinity in the probands' parents of family A (#1) and B (#2 and #3). All probands and available relatives gave their written informed consent for genetic testing and research use according to the Institutional Review Board of ASST-Monza, San Gerardo Hospital-

Monza (protocol code Gen-CI-001A and GEN-CI-012 approved on 12 October 2018) and for the study “HyFerr” (protocol 2973 approved by the Institutional Ethical Committee on 24 March 2022).

Genetic methods

WES was carried on using the Nextera Rapid Capture Exome Library kit (Illumina) on the Illumina NextSeq 550 System (San Diego, California, USA). Reads alignment and variant calling/annotation were performed using BWA-MEM algorithm and Picard-GATK4 tools (Broad Institute). Homozygosity mapping was performed starting from WES data using the AutoMap online tool (<https://automap.iob.ch/>) (Parameters: DP=8, percaltlow=.25, percalthigh=.75, binomial=.000001, maxgap=10, window=7, windowthres=5, minsize=2, minvar=25, minperc=88, chrX=No, extend=1)¹⁹. WES variants were prioritized using the following criteria: allele frequency (MAF) ≤ 0.001 , quality score (QS) ≥ 30 , protein impact, *in silico* prediction of pathogenicity (CADD, DANN, Polyphen2, SIFT-PROVEAN, MutationTaster)²⁰⁻²⁴, homozygous or compound heterozygous status, and genotype identity in affected siblings (when applicable). The candidate variants were validated by Sanger sequencing in the probands and available parents.

Immunohistochemistry

Three patients (#9, #2 and #3) underwent liver biopsy for diagnostic purposes in the past. Blank samples were obtained from Formalin-Fixed Paraffin-Embedded (FFPE) specimens. The control liver samples were derived from subjects with hypertransaminasemia whose histology was normal (kindly provided by the hepatology outpatient clinic of the ASST-Monza, San Gerardo Hospital). FFPE 4-5 μm slices were stained for stabilin-1 using Ventana Benchmark Ultra (Roche Diagnostics, Basel, Switzerland) with an anti-stabilin-1 primary antibody (clone 4G9, sc-293254, Santa Cruz, Dallas, TX, USA) at 1:100 dilution combined with UltraView Universal DAB Detection Kit (Roche Diagnostics, Basel, Switzerland). Anti-Vascular adhesion protein 1 (VAP1) antibodies were used to check for liver

integrity of the analyzed samples (polyclonal rabbit anti-serum against human VAP1, produced in-house and used 1:5000).

Flow cytometry

Mononuclear cells were isolated by Ficoll gradient centrifugation (GE Healthcare, Amersham Biosciences Europe GmbH, Freiburg, Germany) from 40 ml of blood of patients (#2, #3, #1, and #10) and healthy controls, and human monocytes were isolated from peripheral blood mononuclear cells by magnetic enrichment using CD14+ microbeads according to the manufacturer's instructions (Miltenyi Bergisch Gladbach, Germany). Patient monocytes were used as such or differentiated (patients #2 and #1) into macrophages and M2 polarized as previously described²⁵. For flow cytometry, cells were stained with anti-stabilin-1 (clone 9-11, InVivo Biotech Hennigsdorf, Germany) conjugated with Alexa Fluor 647 in-house, anti-CD14-Pacific Blue (558121, BD, Vernon Hills, Illinois, USA) or isotype-matched irrelevant antibody. 7-AAD was used as a viability dye (Invitrogen, 00-6993-50). Samples were acquired on the LSRFortessa (BD, Vernon Hills, Illinois, USA) and analyzed with FlowJo v. 10.8.1 (BD, Vernon Hills, Illinois, USA).

Data Sharing Statement

For original data, please contact alberto.piperno@unimib.it for clinical and genetic data, alessio.difonzo@unimi.it for whole exome studies, and maijal@utu.fi for functional studies.

Results

Genetic study

In the hypothesis of a recessive phenotype, we searched for rare homozygous or compound heterozygous variants in WES data. Based on patients' phenotype we did not expect and did not find pathogenic variants in the hemochromatosis genes or genes associated with hereditary iron overload. We also confirmed the negative findings obtained with Sanger sequencing in L-ferritin and

ferroportin genes¹⁸. Patients of families A (#1) and B (#2 and #3) showed a higher homozygosity rate than controls in line with the known distant consanguinity of their parents. Homozygosity mapping showed a single chromosomal region of homozygosity overlap in the three patients on chromosome 3 (hg19, Chr3: 50,095,103-54,420,721 bp) (Figure 1). Looking for rare non-synonymous variants in this locus we found two homozygous variants in the *STAB1* gene: a missense variant (p.Ser2244Pro) in subject #1 and a deletion/insertion variation (c.5612_5646delinsG) leading to a premature stop codon (p.Gly1871*) in subjects #2 and #3. Interestingly, *STAB1* gene display mild-to-moderate intolerance to missense and loss of function variants (o/e = 0.92 and 0.68, respectively - gnomAD). In addition, a recent meta-analysis of genome-wide association studies (GWAS) found deleterious *STAB1* variants associated with ferritin levels²⁶. Therefore, the *STAB1* gene was prioritized as the candidate etiological gene and was analyzed in the remaining probands with unexplained hyperferritinemia. Remarkably, we found *STAB1* variants in seven of the remaining eight subjects with hyperferritinemia. In details, six carried rare compound heterozygous variants in *STAB1*: p.Glu348Lys and p.Trp2443* in subjects #4 and #5 (Family C), p.Gly723_Phe725del and p.Arg1122Profs*37 in subjects #6 and #7 (Family D), p.Ser2244Pro and p.Tyr2339Cys in subject #8 (Family E), p.Cys120Ser and the rare synonymous variant p.Cys784= in subject #9. Last, subject #10 resulted homozygous for the same p.Ser2244Pro variant found in probands #1 and #8. Interestingly, the three patients carrying this variant (#1, #8, and #10) originated from a restricted geographical area in the south of the Apulia region suggesting a founder effect. All the variants were confirmed by Sanger sequencing. The available parents, who presented normal serum ferritin, were heterozygous carriers of the *STAB1* variants, demonstrating biallelic status in the probands. Table 2 summarizes the identified *STAB1* variants and Supplementary figures 1 and 2 show the family pedigrees and *STAB1* variants visualization in the .bam files of the affected subjects, respectively.

Immunohistochemistry and flow cytometry

To understand how the genetic variants affected stabilin-1 protein levels, we stained liver biopsy samples from patients and controls with an anti-stabilin-1 antibody. In the liver, stabilin-1 is known to be expressed by liver sinusoids but not by Kupffer cells²⁷. Patients #9, #2 and #3 showed no immunoreactivity with anti-stabilin-1 compared to control liver where high signal was detected in the liver sinusoids (Figure 2). All the samples stained normally with anti-vascular adhesion protein 1 (VAP-1) antibody used as control staining confirming the integrity of the samples (Supplementary Figure 3). Thus, the staining results suggest that the identified stabilin-1 genetic variants lead to complete loss of the expressed protein in the liver.

To validate this finding on a more accessible cell population, we next investigated stabilin-1 expression levels on peripheral monocytes (#2, #3, #1, and #10) and monocyte-derived macrophages obtained from patients #2 and #1. Consistently, we observed very little expression of stabilin-1 on CD14+ monocytes and macrophages (Figure 3).

Discussion

There are several lines of evidence supporting the pathogenic role of the identified *STAB1* variants and their relations with hyperferritinemia. First, the co-segregation of biallelic *STAB1* variants with hyperferritinemia in three unrelated families (#2, #3, #4, #5, #7 and #6) is a major proof of pathogenicity. Second, the nonsense variants (p.Gly1871*, p.Trp2443*, p.Arg1122Profs*37) are highly deleterious as they are expected to cause a premature stop codon leading to a truncated stabilin-1 protein. Third, the identified single nucleotide variants and small indels are extremely rare (only identified in the heterozygous status in the population database gnomAD)²⁸ affecting amino acids highly conserved across mammalian species and predicted to be deleterious by the majority of *in silico* tools, except for the p.Cys784= variant carried by patient #9 (Table 2). This variant deserves separate consideration since it is synonymous, it does not affect a conserved nucleotide,

and *in silico* prediction tools predict it to be benign. A splicing disruption effect can be hypothesized; however, *in silico* prediction tools do not consistently support this hypothesis (i.e., SpliceAI, VarSEAK, Human Splicing Finder). Unfortunately, RNA from subject #9 was not available for *STAB1* transcript analyses. Alternatively, another unidentified non-coding pathogenic *STAB1* variant may explain the depletion of stabilin-1 in this subject. However, liver immunohistochemistry stabilin-1 measurement (Figures 2) indicate that #9 is unable to express the protein as observed for patients #2 and #3 carrying nonsense mutations, indicating a deleterious *STAB1* genotype in this subject. Fourth, the analysis of in-house exomes of 500 subjects without hyperferritinemia (Italian neurological patients) did not reveal any carrier of these specific variants or rare biallelic *STAB1* variations (personal data). Fifth, a recent GWAS meta-analysis found an association between four uncorrelated rare *STAB1* variants (p.Glu117*, p.Gly189Ser, p.Glu527Lys, and p.Ser1089Gly) and increased serum ferritin, and in line with our observations, those *STAB1* variants did not associate with increased iron levels and transferrin saturation²⁶. Sixth, immunohistochemistry studies displayed a striking reduction of stabilin-1 protein in hepatic sinusoidal cells of *STAB1* mutation carriers compared to controls. Seventh, patient-derived blood monocytes and macrophages displayed a marked decrease of stabilin-1 on cell surfaces.

Stabilin (or FEEL/CLEVER/HARE) receptors belong to class H scavenger receptors that consists of two members, Stabilin-1 and Stabilin-2^{29,30}. The stabilins are enigmatic proteins whose physiological functions are still not entirely understood³¹. They comprise a large extracellular N-terminus of multiple epidermal growth factor (EGF)/EGF-like domains, seven fasciclin-1 domains, an X-link domain, and a short intracellular C-terminal domain, linked by a transmembrane region³⁰. Their extracellular domains share 55% similar homology, but their short intracellular domains are highly diverse, which results in differential abundance in different tissues and cells^{31,32}. More specifically, stabilin-1 is primarily expressed on sinusoidal endothelial cells of the liver, spleen, adrenal cortex

and lymph nodes, and tissue macrophages^{30,32,33}. The expression profile of this transmembrane protein in professional scavenging cells (sinusoidal endothelial cells and macrophages) strongly supports its function as a scavenger receptor. However, unexpectedly for scavenger receptors, stabilin-1 is the first example of a macrophage-specific receptor that mediates endocytic clearance, intracellular sorting and transcytosis³⁴. Due to the multifaceted function of stabilin-1, different hypotheses can be drawn to explain our findings. First, stabilin-1 may have a role as a scavenger receptor for serum ferritin at the surface of macrophages and/or liver sinusoidal endothelial cells. There is general agreement that cells uptake ferritin through two routes: direct uptake by ferritin receptors and indirect uptake by ferritin-binding proteins¹⁴. It was shown that SCARA5, which belongs to scavenger receptor class A, mediates the uptake of ferritin iron in specific cell types in the developing kidney in mice¹⁶, and that SCARA5-transfected cells can bind or internalize human L-ferritin and H-ferritin³⁵. Stabilin-1, which is able to endocytose ligands such as low-density lipoproteins, Gram-positive and Gram-negative bacteria, and advanced glycosylation end products^{30,36}, might be another scavenger receptor for ferritin in other cell types. Second, stabilin-1 might control ferritin metabolism through more complex mechanisms that concern its role in the regulation of the macrophage secretome³⁴. Stabilin-1 shuttles between endosomal compartment and biosynthetic compartment and transports newly synthesized stabilin-interacting proteins to the lysosomal secretory pathway. Interestingly, it has been previously proposed that serum ferritin is secreted through the nonclassical lysosomal secretory pathway in mice, specifically through secretory lysosomes¹¹. This is supported by the recent findings showing that specific defects of proteins involved in early or later stages of endo-lysosomal trafficking have opposite effects on ferritin secretion³⁷. Both hypotheses are in agreement with what we have previously observed in these patients who showed elevated serum ferritin levels in the face of normal ferritin concentrations in lympho-monocytes suggesting altered ferritin secretion or clearance¹⁸.

In conclusion, we present biallelic *STAB1* mutations as a novel genetic cause of hereditary hyperferritinemia without iron overload. Although such relationship is strongly supported by the data, the underlying mechanisms linking stabilin-1 to ferritin remain to be defined and requires further studies to be clarified. Our findings also indirectly suggest that this function mainly attains to stabilin-1 in humans, since stabilin-2 protein appears to be unable to compensate for the defective stabilin-1. At present, there is no evidence that *STAB1* mutations can lead to clinical manifestations other than hyperferritinemia as all the patients reported here are healthy, although later manifestations cannot be excluded considering the role of stabilin-1 in inflammatory response³⁸. Last, our results support *STAB1* sequencing as a new test in the differential diagnostic set up of hyperferritinemia allowing more precise diagnosis and avoiding useless and expensive investigations in the clinical practice.

Acknowledgement

We thank Dr. Antonio Ciaccio (Hepatology Unit ASST-Monza, San Gerardo Hospital) for providing samples of control liver biopsies and Dr. Nicola Zucchini and the technicians of the Pathology Unit ASST-Monza, San Gerardo Hospital for providing slices of PPFE liver samples of patients and controls. We thank patients and parents involved in the study, and the Associazione per lo Studio dell'Emocromatosi e delle Malattie da Sovraccarico di Ferro (Association for the Study of Hemochromatosis and Iron Overload Disorders) + Fe – ONLUS, Monza for their helpfulness.

Authorship and conflict-of-interest statements.

Contribution: S.P. and A.P. designed research; E.M., S.P. M.H., M.V., F.B., and A.D.F. performed experiments; E.M., S.P., R.M., S.M., A.D.F., and A.P. collected and/or analyzed data; E.M., S.P., M.H., S.M., A.D.F., and A.P. wrote the manuscript; and all authors revised the manuscript.

Conflict-of-interest disclosure: The authors declare no competing financial interests.

ORCID:

Monfrini Edoardo 0000-0003-4720-9234

Pelucchi Sara 0000-0002-9902-9641

Hollmen Maija 0000-0002-3250-7653

Viitala Miro 0000-0002-0951-0168

Mariani Raffaella 0000-0002-8047-370X

Majore Silvia 0000-0001-7153-9351

Di Fonzo Alessio 0000-0001-6478-026X

Piperno Alberto 0000-0002-0343-0204

References

1. Aguilar-Martinez P, Schved JF, Brissot P. The evaluation of hyperferritinemia: an updated strategy based on advances in detecting genetic abnormalities. *Am J Gastroenterol*. 2005;100(5):1185-1194.
2. Camaschella C, Poggiali E. Towards explaining "unexplained hyperferritinemia". *Haematologica*. 2009;94(3):307-309.
3. Lorcerie B, Audia S, Samson M, et al. Diagnosis of hyperferritinemia in routine clinical practice. *Presse Med*. 2017;46(12 Pt 2):e329-e338.
4. Worwood M, Brook JD, Cragg SJ, et al. Assignment of human ferritin genes to chromosomes 11 and 19q13.3----19qter. *Hum Genet*. 1985;69(4):371-374.
5. Muckenthaler MU, Galy B, Hentze MW. Systemic iron homeostasis and the iron-responsive element/iron-regulatory protein (IRE/IRP) regulatory network. *Annu Rev Nutr*. 2008;28:197-213.
6. Torti FM, Torti SV. Regulation of ferritin genes and protein. *Blood*. 2002;99(10):3505-3516.
7. Plays M, Müller S, Rodriguez R. Chemistry and biology of ferritin. *Metallomics*. 2021;13(5).
8. Wang W, Knovich MA, Coffman LG, Torti FM, Torti SV. Serum ferritin: Past, present and future. *Biochim Biophys Acta*. 2010;1800(8):760-769.
9. Worwood M, Dawkins S, Wagstaff M, Jacobs A. The purification and properties of ferritin from human serum. *Biochem J*. 1976;157(1):97-103.
10. Jacobs A, Worwood M. Ferritin in serum. Clinical and biochemical implications. *N Engl J Med*. 1975;292(18):951-956.
11. Cohen LA, Gutierrez L, Weiss A, et al. Serum ferritin is derived primarily from macrophages through a nonclassical secretory pathway. *Blood*. 2010;116(9):1574-1584.
12. Ghosh S, Hevi S, Chuck SL. Regulated secretion of glycosylated human ferritin from hepatocytes. *Blood*. 2004;103(6):2369-2376.
13. Kell DB, Pretorius E. Serum ferritin is an important inflammatory disease marker, as it is mainly a leakage product from damaged cells. *Metallomics*. 2014;6(4):748-773.
14. Orino K. Physiological implications of mammalian ferritin-binding proteins interacting with circulating ferritin and a new aspect of ferritin- and zinc-binding proteins. *Biometals*. 2016;29(1):15-24.
15. Chen TT, Li L, Chung DH, et al. TIM-2 is expressed on B cells and in liver and kidney and is a receptor for H-ferritin endocytosis. *J Exp Med*. 2005;202(7):955-965.
16. Li JY, Paragas N, Ned RM, et al. Scara5 is a ferritin receptor mediating non-transferrin iron delivery. *Dev Cell*. 2009;16(1):35-46.
17. Li L, Fang CJ, Ryan JC, et al. Binding and uptake of H-ferritin are mediated by human transferrin receptor-1. *Proc Natl Acad Sci U S A*. 2010;107(8):3505-3510.
18. Ravasi G, Pelucchi S, Mariani R, et al. Unexplained isolated hyperferritinemia without iron overload. *Am J Hematol*. 2017;92(4):338-343.
19. Quinodoz M, Peter VG, Bedoni N, et al. AutoMap is a high performance homozygosity mapping tool using next-generation sequencing data. *Nat Commun*. 2021;12(1):518.
20. Rentzsch P, Schubach M, Shendure J, Kircher M. CADD-Splice-improving genome-wide variant effect prediction using deep learning-derived splice scores. *Genome Med*. 2021;13(1):31.
21. Quang D, Chen Y, Xie X. DANN: a deep learning approach for annotating the pathogenicity of genetic variants. *Bioinformatics*. 2015;31(5):761-763.
22. Adzhubei IA, Schmidt S, Peshkin L, et al. A method and server for predicting damaging missense mutations. *Nat Methods*. 2010;7(4):248-249.
23. Ng PC, Henikoff S. Predicting deleterious amino acid substitutions. *Genome Res*. 2001;11(5):863-874.

24. Schwarz JM, Cooper DN, Schuelke M, Seelow D. MutationTaster2: mutation prediction for the deep-sequencing age. *Nat Methods*. 2014;11(4):361-362.
25. Viitala MK, Virtakoivu R, Tadayon S, Rannikko J, Jalkanen S, Hollmén M. Immunotherapeutic blockade of macrophage Clever-1 reactivates the CD8+ T cell response against immunosuppressive tumors. *Clinical Cancer Research*. 2019;clincanres.3016.2018.
26. Bell S, Rigas AS, Magnusson MK, et al. A genome-wide meta-analysis yields 46 new loci associating with biomarkers of iron homeostasis. *Commun Biol*. 2021;4(1):156.
27. Shetty S, Weston CJ, Oo YH, et al. Common lymphatic endothelial and vascular endothelial receptor-1 mediates the transmigration of regulatory T cells across human hepatic sinusoidal endothelium. *J Immunol*. 2011;186(7):4147-4155.
28. Karczewski KJ, Francioli LC, Tiao G, et al. The mutational constraint spectrum quantified from variation in 141,456 humans. *Nature*. 2020;581(7809):434-443.
29. Patten DA, Wilkinson AL, O'Keeffe A, Shetty S. Scavenger Receptors: Novel Roles in the Pathogenesis of Liver Inflammation and Cancer. *Semin Liver Dis*. 2022;42(1):61-76.
30. Kzhyshkowska J. Multifunctional receptor stabilin-1 in homeostasis and disease. *ScientificWorldJournal*. 2010;10:2039-2053.
31. Harris EN, Cabral F. Ligand Binding and Signaling of HARE/Stabilin-2. *Biomolecules*. 2019;9(7).
32. Pandey E, Nour AS, Harris EN. Prominent Receptors of Liver Sinusoidal Endothelial Cells in Liver Homeostasis and Disease. *Front Physiol*. 2020;11:873.
33. Irjala H, Elima K, Johansson EL, et al. The same endothelial receptor controls lymphocyte traffic both in vascular and lymphatic vessels. *Eur J Immunol*. 2003;33(3):815-824.
34. Kzhyshkowska J, Krusell L. Cross-talk between endocytic clearance and secretion in macrophages. *Immunobiology*. 2009;214(7):576-593.
35. Yu B, Cheng C, Wu Y, et al. Interactions of ferritin with scavenger receptor class A members. *J Biol Chem*. 2020;295(46):15727-15741.
36. Bhandari S, Larsen AK, McCourt P, Smedsrød B, Sørensen KK. The Scavenger Function of Liver Sinusoidal Endothelial Cells in Health and Disease. *Front Physiol*. 2021;12:757469.
37. Truman-Rosentsvit M, Berenbaum D, Spektor L, et al. Ferritin is secreted via 2 distinct nonclassical vesicular pathways. *Blood*. 2018;131(3):342-352.
38. Virtakoivu R, Rannikko JH, Viitala M, et al. Systemic Blockade of Clever-1 Elicits Lymphocyte Activation Alongside Checkpoint Molecule Downregulation in Patients with Solid Tumors: Results from a Phase I/II Clinical Trial. *Clin Cancer Res*. 2021;27(15):4205-4220.

Table 1. Iron indices at diagnosis in the 11 patients with hyperferritinemia.

	Patient number	Gender	Age (yrs)	Hb (g/dL)	TSAT (%)	s-Ferr (ug/L)	MR-Liver T2* (msec)	MR-LIC (mg/g)
Family A	#1	M	21-25	14.9	41	1313	15.2	1.67
Family B	#2	M	51-55	14.5	33	4654	10.6	2.42
	#3	M	46-50	15.6	33	2947	21.6	1.16
Family C	#4	F	31-35	14.0	34	987	23.8	1.05
	#5	F	31-35	13.1	28	365	28.6	0.87
Family D	#6	M	26-30	13.1	20	1970	15.2	1.67
	#7	M	36-40	17.0	27	2109	14.4	1.76
Family E	#8	M	56-60	13.1	26	3226	14.8	1.72
Family F	#9	M	56-60	15.9	40	1645	17.2	1.47
Family G	#10	M	61-66	16.7	26.5	2903	22.0	1.14
Family H	#11	M	63-66	13.6	38	1154	14.8	1.72

TSAT: Transferrin saturation; s-Ferr: serum ferritin; MR: magnetic resonance; LIC: liver iron concentration (normal values: men ≤ 1.8 , in women ≤ 1.2 mg/g).

Table 2. Genetic characterization of the identified *STAB1* variants

Patients	Variants (cDNA)	Variants (AA)	Allelic status	In silico predictions	Mammalian conservation	rs number (dbSNP)	MAF (gnomAD_exomes)
#1	c.6730T>C	p.Ser2244Pro	Homozygous	Deleterious (5/5)	Yes	rs141939118	0.000028
#2 and #3	c.5612_5646delinsG	p.Gly1871*	Homozygous	Deleterious (2/2)	NA	NA	NA
#4 and #5	c.1042G>A	p.Glu348Lys	Heterozygous	Deleterious (4/5)	Yes	rs754318051	0.000005
	c.7328G>A	p.Trp2443*	Heterozygous	Deleterious (3/3)	NA	rs748728975	0.000004
#6 and #7	c.2167_2175del	p.Gly723_Phe725del	Heterozygous	Likely deleterious (1/2)	Yes	NA	NA
	c.3364dup	p.Arg1122Profs*37	Heterozygous	Deleterious (2/2)	NA	rs563085224	0.000064
#8	c.6730T>C	p.Ser2244Pro	Heterozygous	Deleterious (5/5)	Yes	rs141939118	0.000028
	c.7016A>G	p.Tyr2339Cys	Heterozygous	Deleterious (5/5)	Yes	rs1484029620	0.000014
#9	c.358T>A	p.Cys120Ser	Heterozygous	Deleterious (5/5)	Yes	rs778572255	0.000004
	c.2352C>T	p.Cys784=	Heterozygous	Not deleterious (0/2)	No	rs898828640	0.000012
#10	c.6730T>C	p.Ser2244Pro	Homozygous	Deleterious (5/5)	Yes	rs141939118	0.000028

AA: amino acid; MAF: minor allele frequency; NA: Not Applicable. The following tools have been used for the in silico predictions: CADD, DANN, Polyphen2, SIFT-PROVEAN, MutationTaster, SpliceAI, VarSEAK, Human Splicing Finder (when applicable).

Figures legend

Figure 1. (A) Pedigrees of the two families with history of distant consanguinity carrying the candidate *STAB1* variants. Black symbols denote affected status (hom = homozygous, het = heterozygous). (B) Homozygosity mapping analysis in patients #1 (Family A), #2 and #3 (Family B), performed with AutoMap online tool (<https://automap.iob.ch/>)¹⁹, revealed a single chromosomal region of homozygosity overlap on chromosome 3 (hg19, Chr3:50,095,103-54,420,721 bp), where *STAB1* gene is localized (chr3:52,529,354-52,558,511).

Figure 2. Anti-Stabilin-1 staining of liver biopsy samples from a healthy control and patients #9, #2, and #1 (40X).

Figure 3. Flow cytometric analysis of cell-surface stabilin-1 on CD14⁺ monocytes in controls (n=3) and in patients #2, #1, #3 and #10 (A), and on monocyte-derived macrophages from controls (n=3) and patients #2 and #1 (MFI: median fluorescence intensity) (B).

Figure 1

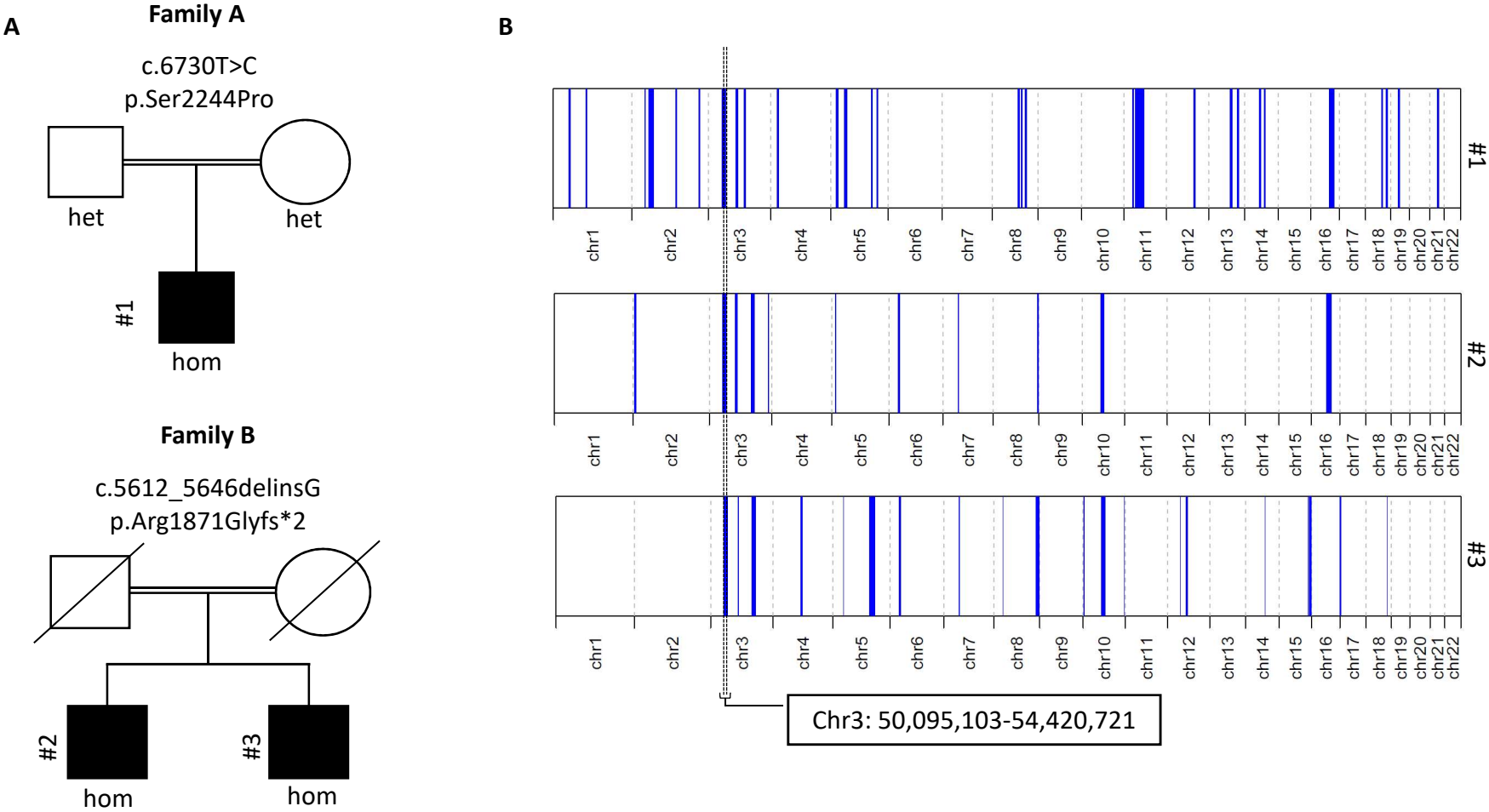


Figure 2

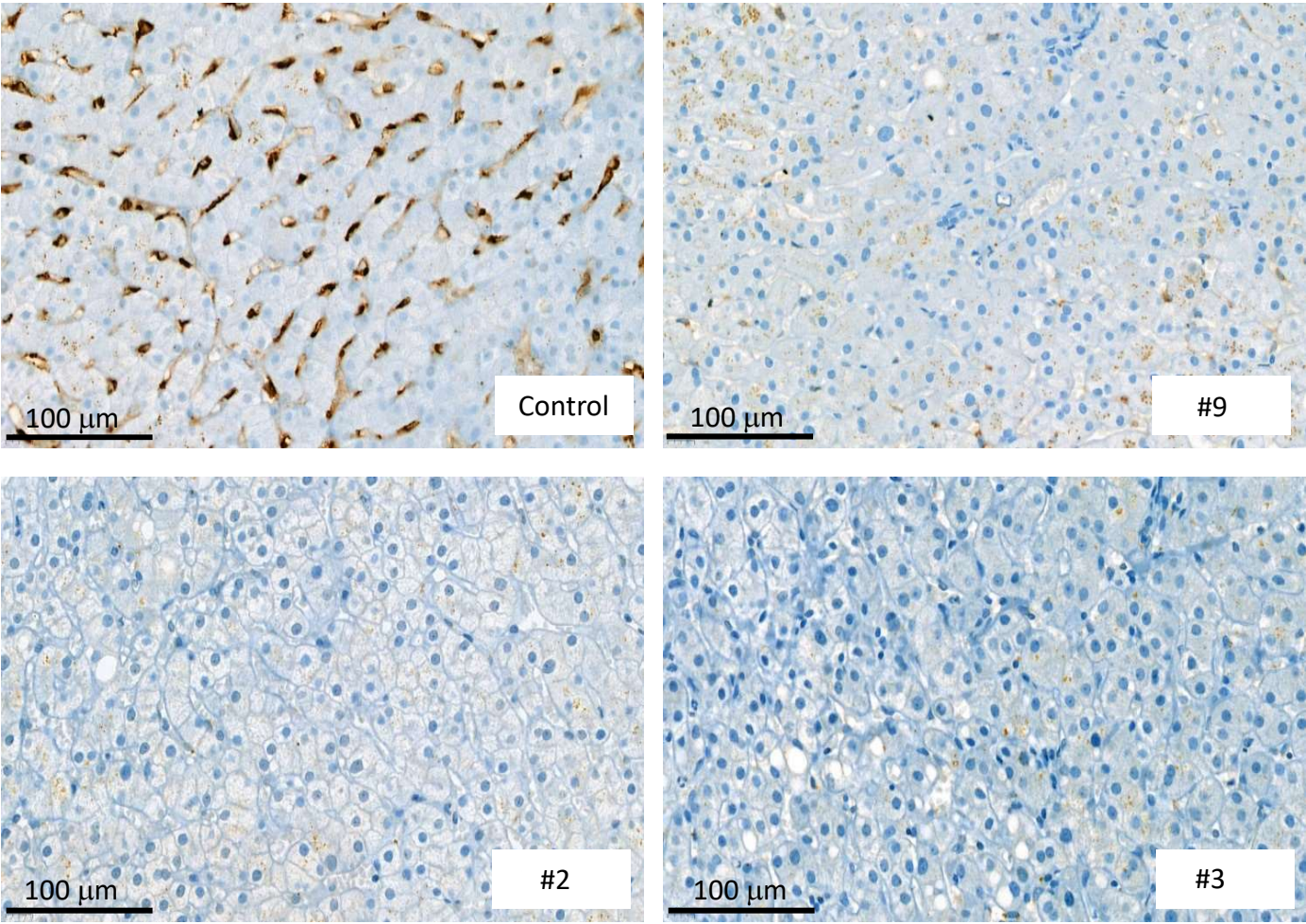


Figure 3

