

Title: Epidemiological and molecular evidence of intrafamilial transmission through sexual and vertical routes in Bahia, the state with the highest prevalence of HTLV-1 in Brazil

Short title: Intrafamilial HTLV-1 transmission in Brazil.

Authors: Aidê Nunes da Silva^{1*}, Thessika Hialla Almeida Araújo^{1*}, Ney Boa-Sorte¹, Giovanne Farias¹, Ana Karina Galvão-Barroso¹, Antônio de Carvalho¹, Ana Carolina Vicente³, Bernardo Galvão-Castro^{1,2**}, Maria Fernanda Rios Grassi^{1,2**},

Affiliations:

¹ Escola Bahiana de Medicina e Saúde Pública, Salvador, Brasil.

² Laboratório Avançado de Saúde Pública, Instituto Gonçalo Moniz, Fundação Oswaldo Cruz, Salvador, Brasil.

³ Instituto Oswaldo Cruz, Rio de Janeiro, Brasil

* Both authors contributed equally

****Corresponding authors:** Maria Fernanda Rios Grassi, fernanda.grassi@fiocruz.br; Bernardo Galvão-Castro, bgalvao@bahiana.edu.br (Both corresponding authors contributed equally).

ABSTRACT

Introduction: Familial clustering of HTLV-1 and related diseases has been reported in Brazil. However, intrafamilial transmission of HTLV-1 based on molecular analysis has been studied only in few communities of Japanese immigrants and African-Brazilians.

Objective: To investigate the familial clustering of HTLV-1 infection and to determine the likely routes of transmission through epidemiological and genetic analyzes.

Methods: Medical records of 1,759 HTLV-1+ patients from de the Center for HTLV in Salvador, Brazil, were evaluated to identify first-degree relatives previously tested for HTLV-1. Familial clustering was assumed if more than one member of the same family was HTLV-1+. LTR regions of HTLV-1 sequences were analyzed for the presence of intrafamilial polymorphisms. Family pedigrees were constructed and analyzed to infer the likely transmission routes of HTLV-1.

Results: In 154 patients at least one other family member had tested positive for HTLV-1 (a total of 182 first-degree relatives). Of the 91 couples (182 individuals), 51.6% were breastfed, and 67.4% reported never using a condom. Of the 42 mother-child pairs, 23.8% had a child aged 13 years or younger; all mothers reported breastfeeding their babies.

Pedigrees of families with 4 or more members suggests that vertical transmission is a likely mode of transmission in three families. Three families may have had both vertical and sexual transmission routes for HTLV-1. The genetic signatures of the LTR region of 8 families revealed 3 families with evidence of vertical transmission, another 3 families (spouses) with sexual transmission, and one family with both transmission routes. HTLV-1 sequences belonged to Cosmopolitan subtype HTLV-1a Transcontinental subgroup A.

Conclusion: Sexual and vertical transmission routes contribute to the intrafamilial spread of HTLV-1 in the state of Bahia.

KEY WORDS: HTLV-1, intrafamilial transmission, genotype, Brazil

44 AUTHOR SUMMARY

45 Human T-lymphotropic virus type 1 (HTLV-1) was the first human retrovirus isolated in
 46 the early 1980s. It is estimated that approximately 10 million people worldwide are
 47 currently infected with HTLV-1, and most people living with HTLV (PLwHTLV) live in
 48 developing countries. The virus is associated with a wide range of diseases, including
 49 neoplasms such as adult T-cell leukemia/lymphoma and progressive and disabling
 50 myelopathy, but most PLwHTLV are unaware of their serologic status. HTLV-1 is
 51 transmitted through contact with contaminated blood and derivatives, sexually, and from
 52 mother to child, especially through breastfeeding. Only recently has WHO recognized
 53 HTLV-1 as a as threatening pathogen to human, but in many parts of the world HTLV
 54 screening is not performed in blood banks or in pregnant women. This may promote silent
 55 intrafamilial transmission of the virus across generations and promote familial clustering
 56 of the virus and associated diseases. In this study, we investigated the familial clustering
 57 of HTLV-1 infection in the state of Bahia, an endemic area for this virus in Brazil. We
 58 found that both sexual and vertical pathways contribute to the transmission and
 59 persistence of the virus in families across multiple generations. Therefore, in addition to
 60 expanding screening for pregnant women and providing infant formula to infected
 61 mothers, it is of utmost importance to combat sexual transmission through effective
 62 measures that can help address this serious and neglected public health problem.

63 INTRODUCTION

64 Human T-lymphotropic virus type 1 was the first human retrovirus to be described (1).
 65 HTLV-2, which is rarely associated with disease, was then isolated soon after (2). HTLV-
 66 1 is the causative agent of adult T-cell leukemia/lymphoma (ATLL) (3), tropical spastic
 67 paraparesis/ HTLV-1-associated myelopathy (TSP/HAM) (4,5), HTLV-1-associated
 68 uveitis (HAU) (6) and HTLV-1-associated infectious dermatitis (HAID) (7). In addition,
 69 many other diseases have been associated with HTLV-1 infection, including
 70 polymyositis, sinusitis, bronchoalveolar pneumonia, keratoconjunctivitis sicca and
 71 bronchiectasis, suggesting multisystemic involvement (8–10).

72 The worldwide prevalence of HTLV-1 infection is estimated to be between 5 and 10
 73 million cases (8). Of all affected countries, Brazil may be the one with the highest
 74 absolute number of persons living with HTLV-1 (PLwHTLV) (8,11). Salvador, the
 75 capital of the state of Bahia, located in northeastern Brazil, has the highest prevalence in
 76 the country (12). A representative sampling of this city's general population revealed a
 77 seroprevalence of 1.8%, corresponding to around 50,000 HTLV-infected individuals
 78 (13). An ecological prevalence study published in 2019 reported that HTLV-1 is
 79 widespread throughout the state of Bahia, and that at least 130,000 individuals were
 80 infected with the virus (14).

81 Horizontal transmission through sexual contact appears to be the main route of HTLV-1
 82 infection in the general population of Salvador (15). However, there is evidence that
 83 vertical transmission also occurs in the state of Bahia, as the prevalence of HTLV-1
 84 infection in pregnant women has been consistently estimated at around 1%(16–18);
 85 moreover, approximately 2% of HTLV-1-infected individuals are reportedly aged 15
 86 years or younger (14).

The prevalence of HTLV-1 is heterogenous throughout the country, with higher prevalence noted in some geographic regions, especially northeastern Brazil (19). HTLV-1 infection tends to be more predominant with age, with females being more affected (8). The familial aggregation of HTLV-1 infection, as well as its associated diseases, has been reported worldwide, including in Brazil (18,20–23). However, in this country, the intrafamilial transmission of HTLV-1 based on molecular analysis has only been studied in communities of Japanese immigrants and their descendants (24–26) (and in isolated communities of African descent (27). This study aims to investigate familial clustering of HTLV-1 infection in the state of Bahia, as well as to determine likely routes of transmission through epidemiological and genetic analysis.

98 **METHODS**

99 **Study design and population.**

100 The present cross-sectional study was conducted between February 2017 and November
 101 2021 at the Integrative and Multidisciplinary Center for HTLV (CHTLV), Bahia School
 102 of Medicine and Public Health Salvador (EBMSP), in Salvador, Bahia-Brazil. This
 103 outpatient clinic provides comprehensive biopsychosocial care to the public and is
 104 supported by the public health services of the Brazilian National Health System (Sistema
 105 Único de Saúde [SUS]) (28).

106 The medical records of 1,759 individuals were evaluated to identify first-degree relatives
 107 (parents, children, siblings and spouses) who had previously been tested for HTLV-1 by
 108 ELISA, with confirmation by Western blotting (Figure 1). Families with at least two
 109 members (including the patient) who had been tested were included in the study. Patients
 110 and family members with cognitive impairment, psychiatric/psychological disorders, and
 111 those diagnosed with HTLV-2 and/or coinfecting with HIV, HBV or HCV were excluded.
 112 Familial aggregation was considered when more than one member of the same family
 113 tested positive for HTLV-1, with the index case being the first family member who was
 114 registered at CHTLV.

115 Semi-structured questionnaires were used to collect sociodemographic, clinical, and
 116 behavioral data. Patients with TSP/HAM were diagnosed according to previously
 117 described criteria (29).

118

Genetic sequencing

Blood samples from eight index cases and 12 HTLV-1 seropositive family members were collected for DNA extraction using a QIAamp DNA Blood Mini Kit (Qiagen, Hilden, Germany) in accordance with the manufacturer's instructions. The HTLV-1 long terminal repeat (LTR) region was amplified by nested PCR using a previously described protocol (30). PCR products were purified using a QIAamp PCR purification kit (Qiagen). Direct nucleotide sequencing was performed in both directions using a Big Dye Terminator v 3.1 Cycle Sequencing Ready Reaction Kit (Applied Biosystems, Foster City, CA) on a 3100 Automated DNA Sequencer (Applied Biosystems). Subsequently, the LTR sequences were uploaded to the HTLV-1 and 2 Genotyping Tool to identify HTLV-1 subtype (31). All HTLV-1 LTR sequences were edited and aligned using BioEdit v5.0.9 software (Department of Microbiology, North Carolina State University, USA) and then visually analyzed to detect the presence of intrafamilial polymorphisms. The new nucleotide sequences identified in the present study were deposited in the GenBank database under accession numbers OP831963-OP831989.

Data analysis

Descriptive statistics are reported as means \pm SD for continuous variables, or frequencies (%) for categorical variables. The student's t test and chi-square test or Fisher's exact test were used for comparisons. The family pedigrees were generated and analyzed to infer the likely routes of HTLV-1 transmission between family members. All data were analyzed using SPSS v20 software (SPSS Inc, Chicago, USA). Statistical significance was assumed when $p < 0.05$.

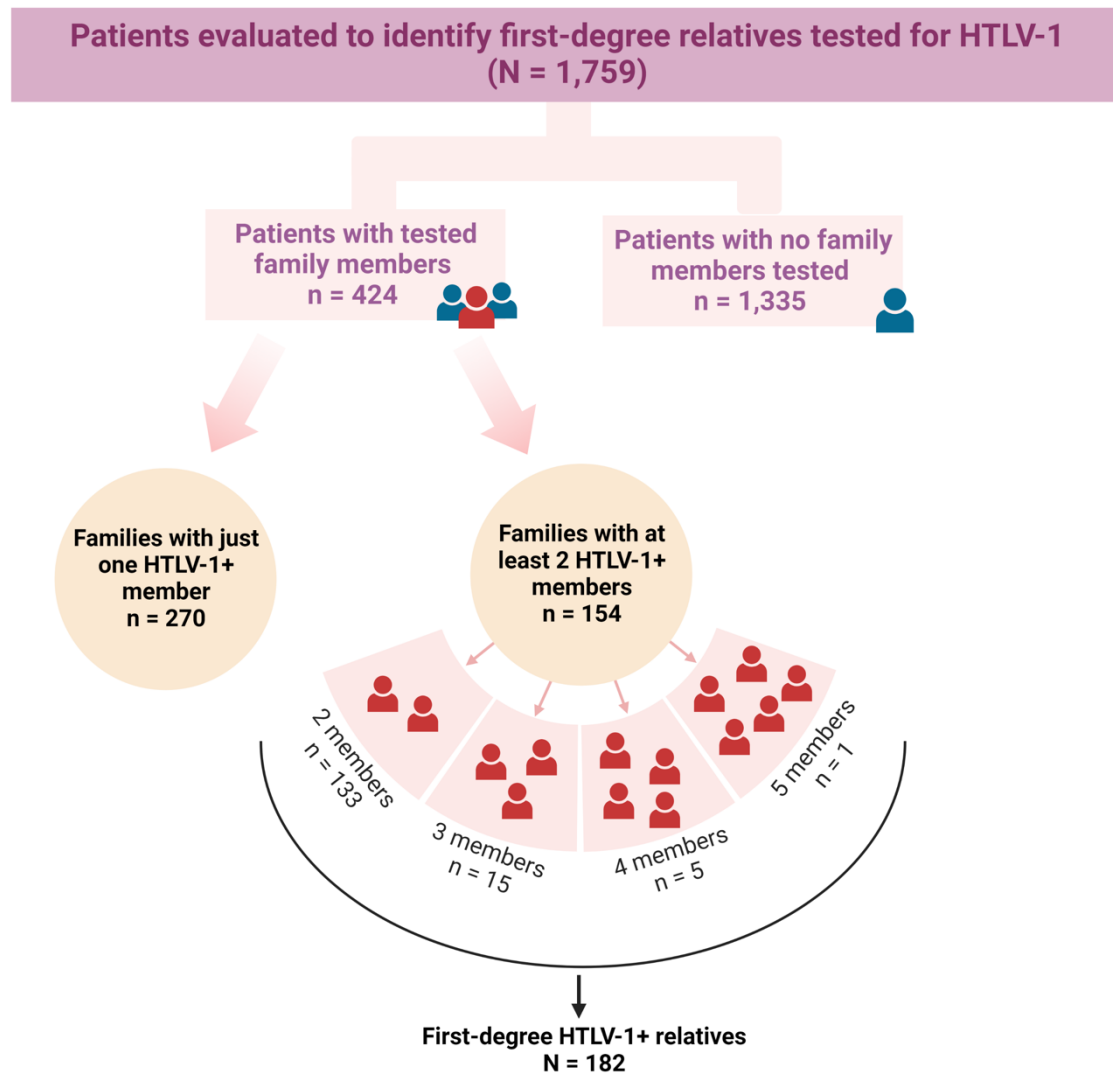


Fig 1. Study design flowchart.

RESULTS

We identified 424 HTLV-1+ patients with at least one first-degree relative previously serologically tested for HTLV-1; of these, 154 patients (index cases) had at least one other family member who was positive for HTLV-1. In all, 182 first-degree relatives of index cases tested positive for HTLV-1 antibodies (Figure 1). The prevalence of HTLV-1 in family members was estimated at 32.9% (182/553 tested family members). The overall prevalence of familial clustering of HTLV-1 was 36.3% (154/424; CI95%:31.7-41.1). The mean ages (SD) of the index cases and their family members were 44.2 (16.12) years and 41.1 (18.64) years, respectively ($p=0.781$). Females were more prevalent among both index cases and family members ($p=0.009$). Most individuals self-reported brown or black skin color. Many family members, 40.9% (63/154) of index cases and 39% (71/182) of first-degree relatives, had less than seven years of formal schooling (Table 1). The prevalence of TSP/HAM was higher in index cases (61/154; 39.6%) compared to infected family members (37/182; 20.3%) ($p < 0.001$).

Table 1. Composition of family units of HTLV-1-infected patients (index cases).

Family composition	No. of families	No. of individuals
Two-member families	133	266
IC + spouse	91	182
Mother + child	42	84
Three-member families	15	45
IC + current wife + ex-wife	2	6

IC + husband + son/daughter	7	21
IC + sons	2	6
IC + husband + mother	1	3
IC + mother + father	1	3
IC + mother + son	1	3
Four-member families	5	20
IC + husband + 2 children	1	4
IC + 3 children	2	8
IC + wife + 2 children	1	4
IC + mother + 2 children	1	4
Five-member families	1	5
IC + mother + father + son + daughter	1	5
Total	154	336

159 IC: Index case

160 In 133/154 families with HTLV-1 aggregation, two members were found to be infected:
161 91 (68.4%) were husband and wife, while 42 (31.6%) were mother and child. In addition,
162 there were three infected persons in 15 families, while five families had four HTLV-1+
163 members, and in one family five individuals tested positive (Figure 1, Table 2).

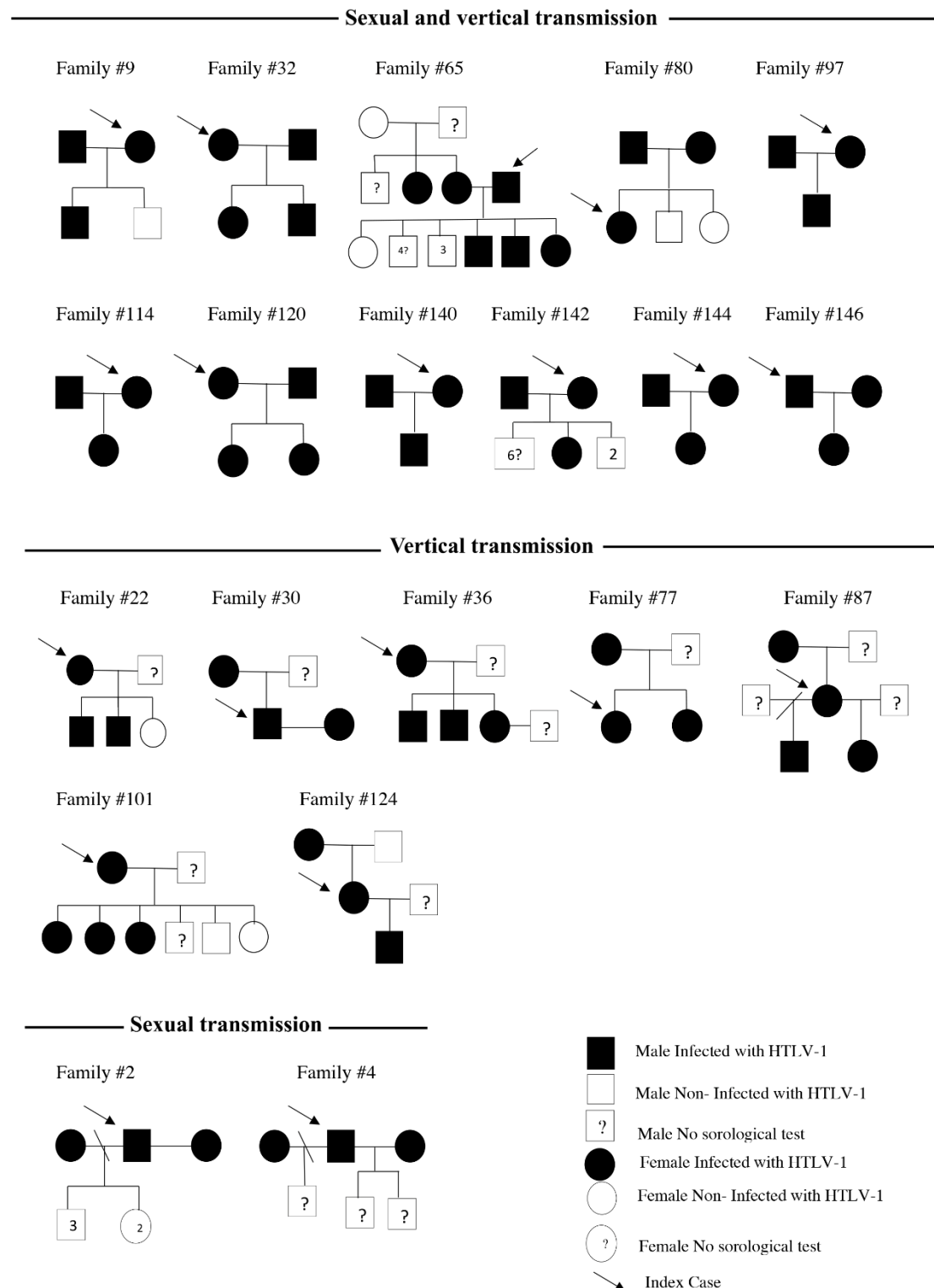
164 **Table 2** – Sociodemographic and clinical profile of index cases and family members with
165 HTLV-1.

Variable	Index case N (%)	Family members N (%)	p value*
	154	182	
Sex			0.009
Male	47 (30.5)	81(44.5)	
Female	107(69.5)	101(55.5)	
Age (years)			0.059
0 to 19	9 (5.84)	26 (14.3)	
20 to 39	51 (33.11)	58 (31.8)	
40 to 59	71 (46.1)	68 (37.3)	
60 to 79	20 (12.9)	28 (15.3)	
79+	3 (2.0)	2 (1.09)	
Skin color (self-reported)			0.542
Black or mixed-race	107 (69.4)	121 (66.5)	
White	12 (7.8)	11 (6.0)	
Missing information	35 (22.8)	50 (27.5)	
Marital status			0.331
Single	36 (23.3)	47 (26.7)	
Married/Stable relationship	106 (68.8)	110 (60.4)	
Divorced	4 (2.6)	5 (2.74)	
Widowed	6 (3.89)	13 (7.14)	
Missing information	2 (1.29)	7 (3.84)	
Years of education			0.934
≤ 7 Years	63 (40.9)	71 (39.0)	

> 7 Years	85 (55.2)	94 (51.7)	
Missing information	6 (3.9)	17 (9.3)	
TSP/HAM diagnosis	61 (39.6)	37 (20.3)	0.001

166 *Chi-squared test

167 Of the 91 HTLV-1+ couples (spouses), totaling 182 individuals, 51.6% (94/182) reported
168 being breastfed, and the majority (67.4%; 122/182) reported never using a condom. Of
169 the 42 mother-child pairs, 10 (23.8%) children were aged 13 years or younger, all mothers
170 reported breastfeeding their babies, and none of the mothers, nor their children, had
171 received blood transfusions. The evaluation of pedigrees of families with three or more
172 HTLV-1+ members suggests the likelihood of vertical transmission in seven families
173 (#22, #30, #36, #77, #87 #101, #124) (Figure 2), sexual transmission in two families (#2,
174 #4) (Figure 2), while both vertical and sexual routes of HTLV-1 transmission may have
175 occurred in eleven families (#9, #32, #65, #80, #97, #114, #120, #140, #142, #144, #146)
176 (Figure 2). In eight families, genetic sequencing of the LTR region revealed strong
177 evidence of vertical transmission in three families (#153, #154 and #158), possible
178 horizontal (sexual, wife and husband) transmission in another three families (#155, #156
179 and #157), and one family with evidence of both types of transmission (family #159). In
180 one family (#152), no unique genetic signature was identified (Figure 3). In all family
181 members, sequencing of the HTLV-1 LTR region identified HTLV-1 Cosmopolitan
182 subtype Transcontinental subgroup A.



183

184 **Fig 2.** Pedigree of 20 family nuclei and possible transmission routes of HTLV-1 based in

185 epidemiological data.

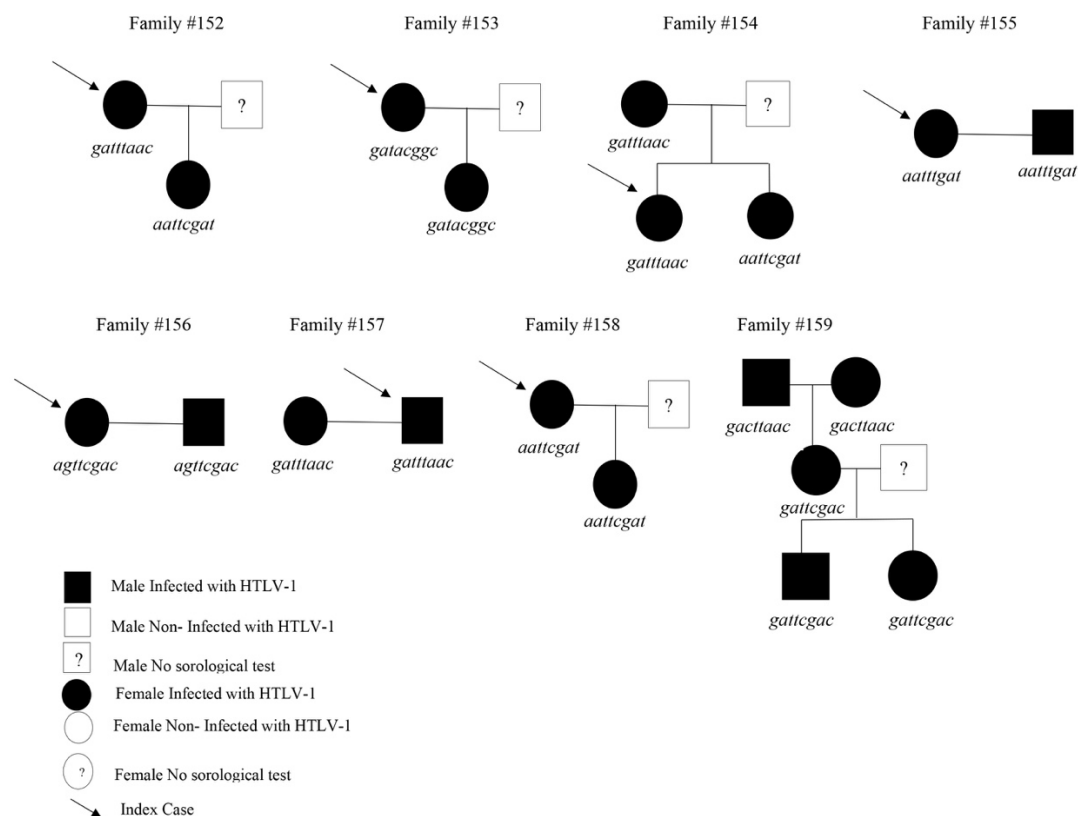


Fig 3. Pedigree of 8 family nuclei and possible transmission routes of HTLV-1 based in genetic sequencing of the LTR region.

DISCUSSION

The present study employed epidemiological and molecular analysis in an attempt to elucidate the sexual and vertical pathways underlying the intrafamilial spread of HTLV-1 in the state of Bahia. Importantly, both vertical and horizontal transmission were concomitantly observed in some families.

The overall prevalence of HTLV-1 familial aggregation found herein was 36.3% CI95%:31.7-41.1), a rate similar to that observed in other endemic areas in countries such as Taiwan (38.8%) and Argentina (31.5%) (32,33), yet higher than that observed in Benin, West Africa (27.5%) (34).

Considering the prevalence of HTLV-1 familial aggregation throughout Brazil, the present rate (36.3%) is slightly lower than that previously reported in patients studied at an HTLV-1 center in the country's northern region (43.5%) (23). A previous study conducted in Bahia examined 43 family members of 20 HTLV-1-infected pregnant women, and reported a prevalence of 32.6%, suggestive of familial clustering (18). In consonance, the prevalence of HTLV-1 among family members tested herein was estimated at 32.9%. The populations served by HTLV centers possess similar sociodemographic profiles, e.g., a predominance of women with low income and educational levels compared to blood donors (35). In contrast, a study investigating the family members of index cases recruited from blood donors in the southern region of Brazil identified a slightly lower prevalence (25.9%) (22).

Regarding the pathways of intrafamilial spread of HTLV-1 in Brazil, studies conducted in communities with a high prevalence of HTLV-1, such as those with Japanese migrants and their descendants (25,26) or Brazilians of African descent living in isolated communities (27), suggested that both vertical and sexual transmission contribute to the

maintenance of HTLV-1 spread across generations. The present study also found evidence of both modes of transmission, even occurring simultaneously in some of the families investigated (#32, #65, #159).

As vertical transmission is considered the main route of intrafamilial spread of HTLV, preventive measures have been taken to address this concern. Measures implemented in Japan to control vertical HTLV-1 transmission have successfully decreased prevalence significantly (36). In Bahia, HTLV-1 testing for pregnant women became mandatory in 2011 (Portaria No 460, de 19 de novembro de 2020) and has more recently been recommended across Brazil (37). The World Health Organization and Pan American Health Organization have both strongly recommended mandatory testing for pregnant women in recognition of the importance of vertical transmission (38). However, little attention has been paid to the intrafamilial spread of HTLV-1 through sexual intercourse (39). Recently, an increase in the rate of transmission of HTLV-1 through sexual intercourse, particularly among young people was observed in Japan (40). Studies conducted in Salvador have identified sexual transmission as the main route responsible for HTLV-1 in the general population (13,15); moreover, approximately 1% of pregnant women tested in Salvador were found to be infected with HTLV-1 (16,17).

In addition, the familial aggregation of HTLV-1 has also been associated with the clustering of diseases related to the virus. A systematic review investigating HTLV-1-associated diseases reported a higher incidence of ATLL and TSP/HAM in relatives of index cases (20). The present study also identified TSP/HAM in approximately 20% of the relatives of HTLV-1+ patients. Moreover, previous studies conducted in Salvador have additionally identified familial clusters of IDH in association with TSP/HAM (21,41). Another study further demonstrated the familial aggregation of TSP/HAM, with onset occurring at a younger age (41).

The HTLV-1 subtype identified in the studied sample belongs to the Cosmopolitan subtype Transcontinental subgroup A (HTLV-1a). This subtype was also detected in previous studies of populations in Bahia, supporting the introduction of the virus during the post-Columbian period through the slavery trade (43,44). Conversely, Japanese subgroup (a) was reported in a subset of samples from Japanese immigrants and their families, confirming two different pathways of HTLV-1 introduction in Brazil during the post-Colombian period (25,26).

Our study presents some limitations with respect to bias in sample selection, as the sample was mainly composed of adults with an average age of 50 years. In addition, the percentage of tested family members was low, with approximately 1.2 relatives tested per index case, and spouses representing the majority of family units in which familiar aggregation was observed.

In conclusion, the results presented herein demonstrate that both sexual and vertical transmission routes contribute to the intrafamilial spread of HTLV-1 in the state of Bahia.

Therefore, we strongly recommend testing all family members of HTLV-1-infected individuals to better understand relevant factors related to the interfamilial spread of this virus. Considering that both vertical and sexual routes play a role in the spread of HTLV-1 (33), in addition to expanding the screening of pregnant women and providing infant formula to infected mothers, it is also of paramount importance to address sexual transmission by implementing effective measures, which may contribute to the control this serious and neglected public health problem that mainly affects socio-economically disadvantaged populations.

262 DATA AVAILABILITY STATEMENT

263 The raw data supporting the conclusions of this article will be made available by the
264 authors, without undue reservation.

265 ETHICS STATEMENT

266 The studies involving human participants were reviewed and approved by the Comitê de
267 Ética em Pesquisa em Seres Humanos da Bahiana (CAAE: 60554416.8.0000.5544).
268 Written informed consent from the patients/participants or their legal guardian/next of
269 kin was not required to participate in this study in accordance with the national legislation
270 and the institutional requirements.

271 AUTHOR CONTRIBUTIONS

272 BG-C and MFRG: conceptualization. MFRG ANS, THAA, GF, AK G-B, AC, ACV, and
273 NB-S: data curation. ANS, THAA, NBS ACV, BG-C and MFRG: formal analysis and
274 methodology. All authors involved in investigation, writing—original draft, review and
275 editing, contributed to the article, and approved the submitted version.

276 FUNDING

277 This work was supported by the Coordination of Superior Level Staff Improvement-
278 Brazil (CAPES) - Finance Code 001 and National Foundation for the Development of
279 Private Higher Education (FUNADESP), grants 9600140 and 9600141. Maria Fernanda
280 R. Grassi and Bernardo Galvão-Castro are research fellows of CNPq (process no.
281 308167/2021-0 and 473667/2012-6, respectively).

282 CONFLICT OF INTEREST STATEMENT

283 The authors declare that the research was conducted in the absence of any commercial or
284 financial relationships that could be construed as a potential conflict of interest.

285 **ACKNOWLEDGMENT**

286 We would like to thank Sônia Rangel and Maíara Cerqueira for administrative support
287 and Dr Fred Neves Santos for critically reading the manuscript. We would also like to
288 thank Andris K. Walter for critical analysis, English language revision, and manuscript
289 copyediting assistance.

290

291 REFERENCES

- 292 1. Poiesz BJ, Ruscetti FW, Gazdar AF, Bunn PA, Minna JD, Gallo RC. Detection
293 and isolation of type C retrovirus particles from fresh and cultured lymphocytes of a
294 patient with cutaneous T-cell lymphoma. *Proc Natl Acad Sci U S A.* dezembro de
295 1980;77(12):7415–9.
- 296 2. Roucoux DF, Murphy EL. The epidemiology and disease outcomes of human T-
297 lymphotropic virus type II. *AIDS Rev.* setembro de 2004;6(3):144–54.
- 298 3. Hinuma Y, Nagata K, Hanaoka M, Nakai M, Matsumoto T, Kinoshita KI, et al.
299 Adult T-cell leukemia: antigen in an ATL cell line and detection of antibodies to the
300 antigen in human sera. *Proc Natl Acad Sci U S A.* outubro de 1981;78(10):6476–80.
- 301 4. Gessain A, Barin F, Vernant JC, Gout O, Maurs L, Calender A, et al. Antibodies
302 to human T-lymphotropic virus type-I in patients with tropical spastic paraparesis.
303 *Lancet.* 24 de agosto de 1985;2(8452):407–10.
- 304 5. Osame M, Usuku K, Izumo S, Ijichi N, Amitani H, Igata A, et al. HTLV-I
305 associated myelopathy, a new clinical entity. *Lancet.* 3 de maio de 1986;1(8488):1031–
306 2.
- 307 6. Mochizuki M, Yamaguchi K, Takatsuki K, Watanabe T, Mori S, Tajima K.
308 HTLV-I and uveitis. *Lancet.* 2 de maio de 1992;339(8801):1110.
- 309 7. LaGrenade L, Hanchard B, Fletcher V, Cranston B, Blattner W. Infective
310 dermatitis of Jamaican children: a marker for HTLV-I infection. *Lancet.* 1º de dezembro
311 de 1990;336(8727):1345–7.
- 312 8. Gessain A, Cassar O. Epidemiological Aspects and World Distribution of
313 HTLV-1 Infection. *Front Microbiol.* 2012;3:388.
- 314 9. Rathsam-Pinheiro RH, Boa-Sorte N, Castro-Lima-Vargens C, Pinheiro CA,
315 Castro-Lima H, Galvão-Castro B. Ocular lesions in HTLV-1 infected patients from
316 Salvador, State of Bahia: the city with the highest prevalence of this infection in Brazil.
317 *Rev Soc Bras Med Trop.* dezembro de 2009;42(6):633–7.
- 318 10. Einsiedel L, Chiong F, Jersmann H, Taylor GP. Human T-cell leukaemia virus
319 type 1 associated pulmonary disease: clinical and pathological features of an under-
320 recognised complication of HTLV-1 infection. *Retrovirology.* 6 de janeiro de
321 2021;18(1):1.
- 322 11. Proietti FA, Carneiro-Proietti ABF, Catalan-Soares BC, Murphy EL. Global
323 epidemiology of HTLV-I infection and associated diseases. *Oncogene.* 5 de setembro de
324 2005;24(39):6058–68.
- 325 12. Galvão-Castro B, Loures L, Rodrigues LG, Sereno A, Ferreira Júnior OC,
326 Franco LG, et al. Distribution of human T-lymphotropic virus type I among blood
327 donors: a nationwide Brazilian study. *Transfusion.* fevereiro de 1997;37(2):242–3.
- 328 13. Dourado I, Alcantara LCJ, Barreto ML, da Gloria Teixeira M, Galvão-Castro B.
329 HTLV-I in the general population of Salvador, Brazil: a city with African ethnic and
330 sociodemographic characteristics. *J Acquir Immune Defic Syndr.* 15 de dezembro de
331 2003;34(5):527–31.
- 332 14. Pereira FM, de Almeida M da CC, Santos FLN, Carreiro RP, Regis-Silva CG,
333 Galvão-Castro B, et al. Evidence of New Endemic Clusters of Human T-Cell Leukemia
334 Virus (HTLV) Infection in Bahia, Brazil. *Front Microbiol.* 2019;10:1002.
- 335 15. Nunes D, Boa-Sorte N, Grassi MFR, Taylor GP, Teixeira MG, Barreto ML, et
336 al. HTLV-1 is predominantly sexually transmitted in Salvador, the city with the highest
337 HTLV-1 prevalence in Brazil. *PLoS One.* 2017;12(2):e0171303.
- 338 16. dos Santos JI, Lopes MA, Deliége-Vasconcelos E, Couto-Fernandez JC, Patel

- 339 BN, Barreto ML, et al. Seroprevalence of HIV, HTLV-I/II and other perinatally-
340 transmitted pathogens in Salvador, Bahia. *Rev Inst Med Trop Sao Paulo*. agosto de
341 1995;37(4):343–8.
- 342 17. Bittencourt AL, Dourado I, Filho PB, Santos M, Valadão E, Alcantara LC, et al.
343 Human T-cell lymphotropic virus type 1 infection among pregnant women in
344 northeastern Brazil. *J Acquir Immune Defic Syndr*. 15 de abril de 2001;26(5):490–4.
- 345 18. Mello MAG, da Conceição AF, Sousa SMB, Alcântara LC, Marin LJ, Regina da
346 Silva Raiol M, et al. HTLV-1 in pregnant women from the Southern Bahia, Brazil: a
347 neglected condition despite the high prevalence. *Virol J*. 13 de fevereiro de 2014;11:28.
- 348 19. Catalan-Soares B, Carneiro-Proietti AB de F, Proietti FA, Interdisciplinary
349 HTLV Research Group. Heterogeneous geographic distribution of human T-cell
350 lymphotropic viruses I and II (HTLV-I/II): serological screening prevalence rates in
351 blood donors from large urban areas in Brazil. *Cad Saude Publica*. junho de
352 2005;21(3):926–31.
- 353 20. Alvarez C, Gotuzzo E, Vandamme AM, Verdonck K. Family Aggregation of
354 Human T-Lymphotropic Virus 1-Associated Diseases: A Systematic Review. *Front*
355 *Microbiol*. 2016;7:1674.
- 356 21. Primo JRL, Brites C, Oliveira M de FSP de, Moreno-Carvalho O, Machado M,
357 Bittencourt AL. Infective dermatitis and human T cell lymphotropic virus type 1-
358 associated myelopathy/tropical spastic paraparesis in childhood and adolescence. *Clin*
359 *Infect Dis*. 15 de agosto de 2005;41(4):535–41.
- 360 22. Catalan-Soares B, Carneiro-Proietti AB, Proietti FA, Grupo Interdisciplinar de
361 Pesquisas em HTLV. [Human T-cell lymphotropic virus in family members of
362 seropositive blood donors: silent dissemination]. *Rev Panam Salud Publica*. dezembro
363 de 2004;16(6):387–94.
- 364 23. da Costa CA, Furtado KCYO, Ferreira L de SC, Almeida D de S, Linhares A da
365 C, Ishak R, et al. Familial transmission of human T-cell lymphotropic virus: silent
366 dissemination of an emerging but neglected infection. *PLoS Negl Trop Dis*.
367 2013;7(6):e2272.
- 368 24. Bandeira LM, Uehara SNO, Asato MA, Agüena GS, Maedo CM, Benites NH, et
369 al. High Prevalence of HTLV-1 Infection among Japanese Immigrants in Non-endemic
370 Area of Brazil. Kashanchi F, organizador. *PLoS Negl Trop Dis* [Internet]. 17 de abril de
371 2015 [citado 28 de setembro de 2022];9(4):e0003691. Disponível em:
372 <https://dx.plos.org/10.1371/journal.pntd.0003691>
- 373 25. Bandeira LM, Uehara SNO, Puga MAM, Rezende GR, Vicente ACP, Domingos
374 JA, et al. HTLV-1 intrafamilial transmission among Japanese immigrants in Brazil. *J*
375 *Med Virol*. fevereiro de 2018;90(2):351–7.
- 376 26. Bandeira LM, Puga MAM, Weis-Torres SMS, Rezende GR, Domingos JA,
377 Tanaka TSO, et al. Human T-cell leukemia virus type 1 infection among Japanese
378 immigrants and their descendants living in Southeast Brazil: A call for preventive and
379 control responses. Taylor GP, organizador. *PLoS Negl Trop Dis* [Internet]. 5 de
380 fevereiro de 2021 [citado 28 de setembro de 2022];15(2):e0009066. Disponível em:
381 <https://dx.plos.org/10.1371/journal.pntd.0009066>
- 382 27. Martins RMB, do Nascimento LB, Carneiro MA dos S, Teles SA, Lopes CLR,
383 Motta-Castro ARC, et al. HTLV-1 intrafamilial transmission through three generations
384 in an isolated Afro-Brazilian community. *J Clin Virol*. junho de 2010;48(2):155–7.
- 385 28. Galvão-Castro B, Grassi MFR, Galvão-Castro AV, Nunes A, Galvão – Barroso
386 AK, Araújo THA, et al. Integrative and Multidisciplinary Care for People Living With
387 Human T-Cell Lymphotropic Virus in Bahia, Brazil: 20 Years of Experience. *Front*
388 *Med* [Internet]. 7 de junho de 2022 [citado 5 de setembro de 2022];9:884127.

- Disponível em: <https://www.frontiersin.org/articles/10.3389/fmed.2022.884127/full>
29. De Castro-Costa CM, Araújo AQC, Barreto MM, Takayanagui OM, Sohler MP, da Silva ELM, et al. Proposal for diagnostic criteria of tropical spastic paraparesis/HTLV-I-associated myelopathy (TSP/HAM). *AIDS Res Hum Retroviruses*. outubro de 2006;22(10):931–5.
30. Liu HF, Vandamme AM, Kazadi K, Carton H, Desmyter J, Goubau P. Familial transmission and minimal sequence variability of human T-lymphotropic virus type I (HTLV-I) in Zaire. *AIDS Res Hum Retroviruses*. setembro de 1994;10(9):1135–42.
31. HTLV-1 and 2 Genotyping Tool [Internet]. [citado 25 de outubro de 2022]. Disponível em: <https://www.genomedetective.com/app/typingtool/htlv/how-to-cite>
32. Lu SC, Kao CL, Chin LT, Chen JW, Yang CM, Chang AC, et al. Intrafamilial transmission and risk assessment of HTLV-I among blood donors in southern Taiwan. *Kaohsiung J Med Sci*. março de 2001;17(3):126–32.
33. Frutos MC, Gastaldello R, Balangero M, Remondegui C, Blanco S, Otsuki K, et al. Silent dissemination of HTLV-1 in an endemic area of Argentina. *Epidemiological and molecular evidence of intrafamilial transmission*. *PLoS One*. 2017;12(4):e0174920.
34. Dumas M, Houinato D, Verdier M, Zohoun T, Josse R, Bonis J, et al. Seroepidemiology of human T-cell lymphotropic virus type I/II in Benin (West Africa). *AIDS Res Hum Retroviruses*. maio de 1991;7(5):447–51.
35. Mota A, Nunes C, Melo A, Romeo M, Boasorte N, Dourado I, et al. A case-control study of HTLV-infection among blood donors in Salvador, Bahia, Brazil - associated risk factors and trend towards declining prevalence. *Rev Bras Hematol Hemoter* [Internet]. junho de 2006 [citado 22 de fevereiro de 2022];28(2). Disponível em: http://www.scielo.br/scielo.php?script=sci_arttext&pid=S1516-84842006000200011&lng=en&nrm=iso&tlng=en
36. Hino S. Establishment of the milk-borne transmission as a key factor for the peculiar endemicity of human T-lymphotropic virus type 1 (HTLV-1): the ATL Prevention Program Nagasaki. *Proc Jpn Acad Ser B Phys Biol Sci*. 2011;87(4):152–66.
37. Espinosa Barbosa Miranda A, Pereira G. Guia de Manejo Clínico da Infecção pelo HTLV / Ministério da Saúde, Secretaria de Vigilância em Saúde, Departamento de Doenças de Condições Crônicas e Infecções Sexualmente Transmissíveis. 1º ed. Vol. 1. MINISTÉRIO DA SAÚDE- Secretaria de Vigilância em Saúde Departamento de Doenças de Condições Crônicas e Infecções Sexualmente Transmissíveis; 104 p.
38. World Health Organization. Human T-lymphotropic virus type 1: technical report [Internet]. Geneva: World Health Organization; 2021 [citado 25 de outubro de 2022]. Disponível em: <https://apps.who.int/iris/handle/10665/339773>
39. Martel M, Gotuzzo E. HTLV-1 Is Also a Sexually Transmitted Infection. *Front Public Health*. 2022;10:840295.
40. Sagara Y, Nakamura H, Satake M, Watanabe T, Hamaguchi I. Increasing horizontal transmission of human T-cell leukemia virus type 1 in adolescents and young adults in Japan. *Journal of Clinical Virology* [Internet]. dezembro de 2022 [citado 16 de novembro de 2022];157:105324. Disponível em: <https://linkinghub.elsevier.com/retrieve/pii/S1386653222002566>
41. Silva JLS da, Primo JRL, de Oliveira M de FSP, Batista E da S, Moreno-Carvalho O, Farré L, et al. Clustering of HTLV-1 associated myelopathy/tropical spastic paraparesis (HAM/TSP) and infective dermatitis associated with HTLV-1 (IDH) in Salvador, Bahia, Brazil. *Journal of Clinical Virology* [Internet]. outubro de 2013 [citado 9 de setembro de 2022];58(2):482–5. Disponível em: <https://linkinghub.elsevier.com/retrieve/pii/S1386653213002874>
42. Nozuma S, Matsuura E, Matsuzaki T, Watanabe O, Kubota R, Izumo S, et al.

- 439 Familial clusters of HTLV-1-associated myelopathy/tropical spastic paraparesis. PLoS
440 One. 2014;9(5):e86144.
- 441 43. Magalhães T, Mota-Miranda AC, Alcantara LCJ, Olavarria V, Galvão-Castro B,
442 Rios-Grassi MF. Phylogenetic and molecular analysis of HTLV-1 isolates from a
443 medium sized town in northern of Brazil: tracing a common origin of the virus from the
444 most endemic city in the country. J Med Virol. novembro de 2008;80(11):2040–5.
- 445 44. Alcantara LC, Van Dooren S, Gonçalves MS, Kashima S, Costa MCR, Santos
446 FLN, et al. Globin haplotypes of human T-cell lymphotropic virus type I-infected
447 individuals in Salvador, Bahia, Brazil, suggest a post-Columbian African origin of this
448 virus. J Acquir Immune Defic Syndr. 1º de agosto de 2003;33(4):536–42.
- 449