

Title: Direct Economic Burden of Mental Health Disorders Associated with Polycystic Ovary Syndrome: Systematic Review and Meta-analysis

Authors: ¹Surabhi Yadav, ¹Olivia Delau, ²Adam Bonner, ³Daniela Markovic, ⁴William Patterson, ⁴Sasha Ottey, ⁵ Richard P. Buyalos, ^{2,6,7,8}Ricardo Azziz

Affiliations:

¹School of Global Public Health, New York University, New York, NY 10003, USA

²Department of Obstetrics & Gynecology, Heersink School of Medicine, University of Alabama at Birmingham, Birmingham, AL 35294, USA

³Division of General Internal Medicine and Health Services Research, UCLA, Los Angeles, CA 90095, USA

⁴PCOS Challenge: The National Polycystic Ovary Syndrome, Atlanta, GA 30308, USA

⁵Department of Obstetrics and Gynecology, UCLA, Los Angeles, CA 90095, USA

⁶Department of Medicine, Heersink School of Medicine, University of Alabama at Birmingham, Birmingham, AL 35294, USA

⁷Department of Health Policy, Management and Behavior, School of Public Health, University at Albany, SUNY, Rensselaer, NY 12144, USA

⁸Department of Healthcare Organization and Policy, School of Public Health, University of Alabama at Birmingham, Birmingham, AL 35294, USA

Support: The study was supported, in part, by PCOS Challenge: The National Polycystic Ovary Syndrome Association and the Foundation for Research and Education Excellence

Short Title: Direct Costs of Mental Health Disorders in PCOS

26

27 **Correspondence:** Ricardo Azziz, MD, UAB Women and Infants Center, 1700 6th Avenue
28 South, Birmingham, AL 35233, USA. Email: razziz@uabmc.edu; ORCID: 0000-0002-3917-0483

29

30 **Data Availability Statement:** The data is available at: Azziz, Ricardo. (2022). Economic
31 Burden of Mental Health Disorders in PCOS-Supplementary Data [Data set]. Zenodo.
32 <https://doi.org/10.5281/zenodo.7478354>

33

34 **Disclosure Summary:** Surabhi Yadav, Olivia Delau, Adam Bonner, Daniela Markovic, and
35 Richard P. Buyalos, have no competing interests to declare. Sasha Ottey received honoraria from
36 Institute for Family Centeredness; has received travel support for attendance at Women's Health
37 Innovation Summit; and is Executive Director for PCOS Challenge: The National Polycystic Ovary
38 Executive Director Syndrome Association. The author has no other competing interests to
39 declare. William Patterson is a Director of Public Affairs, Study Recruitment and Patient Registry
40 Manager, and Intern Preceptor for PCOS Challenge: The National Polycystic Ovary Syndrome
41 Association. The author has no other competing interests to declare. Ricardo Azziz received a
42 grant from Ferring Pharmaceuticals; has received royalties from Wolters Kluwer Health, Johns
43 Hopkins University Press, Springer, and McGraw Hill; has received honoraria from Davidson-
44 Mestman course; has participated on a data safety monitoring board for University of Michigan
45 and Guangzhou Medical University; has held a leadership or fiduciary role at American Society for
46 Reproductive Medicine; holds stock at Martin Imaging and Arora Forge; has received consulting
47 fees from Spruce Biosciences, Fortress Biotech, Rani Therapeutics, Core Access Surgical for
48 PCOS, female reproduction and gynecologic surgery; and serves as Senior Editor at eLife.
49 The author has no other competing interests to declare.

50

ABSTRACT

BACKGROUND: Polycystic ovary syndrome (PCOS) is the most common hormone disorder affecting about one in seven reproductive-aged women worldwide and approximately 6 million women in the United States (U.S.). PCOS can be a significant burden to those affected and is associated with an increased prevalence of mental health (MH) disorders such as depression, anxiety, eating disorders, and postpartum depression. We undertook this study to determine the excess economic burden associated with MH disorders in women with PCOS, in order to allow for a more accurate prioritization of the disorder as a public health priority.

METHODS: Followed PRISMA reporting guidelines for systematic review, we searched PubMed, Web of Science, EBSCO, Medline, Scopus, and PsycINFO through July 16, 2021, for studies on MH disorders in PCOS. Excluded were studies not in humans, without controls, without original data, or not peer reviewed. As anxiety, depression, eating disorders, and postpartum depression were by far the most common MH disorders assessed by the studies, we performed our meta-analysis on these disorders. Meta-analyses were performed using the DerSimonian-Laird random-effects model to compute pooled estimates of prevalence ratios (PR) for the associations between PCOS and these MH disorders, and then calculated the excess direct costs of related to these disorders in U.S. dollars (USD) for women suffering from PCOS in the U.S. alone. The quality of selected studies was assessed using the Newcastle-Ottawa Scale.

RESULTS: We screened 78 articles by title/abstract, assessed 43 articles in full-text, and included 25 articles. Pooled PRs were 1.42 (95% CI: 1.32-1.52) for anxiety, 1.65 (95% CI: 1.44-1.89;) for depression, 1.48 (95% CI: PR: 1.06-2.05) for eating disorders, and 1.20 (95% CI: 0.96-1.50) for postpartum depression, for PCOS relative to controls. In the U.S, the additional direct healthcare costs associated with anxiety, depression and eating disorders in PCOS were estimated to be \$1.939 billion/yr., 1.678 billion/yr., and \$0.644 billion/yr. in 2021 USD, respectively. Postpartum depression was excluded from the cost analyses due to the non-

significant meta-analysis result. Taken together, the additional direct healthcare costs associated with anxiety, depression and eating disorders in PCOS was estimated to be \$4.261 billion/yr. in 2021 USD.

CONCLUSIONS: Overall, the direct healthcare annual costs for the most common MH disorders in PCOS, namely anxiety, depression, and eating disorders exceeds \$4 billion in 2021 USD for the U.S. population alone. Taken together with our prior work, these data suggest that the healthcare-related economic burden of PCOS exceeds \$15 billion yearly, considering the costs of PCOS diagnosis, and cost related to PCOS-associated MH, reproductive, vascular, and metabolic disorders. As PCOS has much the same prevalence across the world, the excess economic burden attributable to PCOS globally is enormous, mandating that the scientific and policy community increase its focus on this important disorder.

FUNDING: The study was supported, in part, by PCOS Challenge: The National Polycystic Ovary Syndrome Association and by the Foundation for Research and Education Excellence

CLINICAL TRIAL NUMBER: N/A

Key Words: polycystic ovarian syndrome, economic burden, mental health disorders, anxiety, depression, eating disorder, postpartum depression

INTRODUCTION

Polycystic ovary syndrome (PCOS) is a highly prevalent disorder, highly inherited complex polygenic, multifactorial disorder (1). PCOS single most common endocrine-metabolic disorder in reproductive-aged women today, affecting 5-15% of unselected reproductive-aged women (1990 National Institutes of Health criteria), and potentially represents a significant financial burden to our health care (2,3). Pathophysiological abnormalities in gonadotropin secretion or action, ovarian folliculogenesis, steroidogenesis, insulin secretion or action, and adipose tissue function, among others, have been described in PCOS. Women with PCOS are at increased risk for glucose intolerance and type 2 diabetes mellitus (T2DM), hepatic steatosis and metabolic syndrome, hypertension, dyslipidemia, vascular thrombosis, cerebrovascular accidents, possibly cardiovascular events, subfertility and obstetric complications, endometrial carcinoma, and mood and psychosexual disorders (1).

Although the physical symptoms of PCOS are increasingly recognized by practicing clinicians, little attention has focused on the psychological correlates of this frequent endocrine disorder (4,5). A significant amount of research has been conducted showing the direct causal relationship between PCOS diagnosis and mental health (MH) disorders. PCOS is associated with an increased risk of a diagnosis of depression, anxiety, bipolar disorder, and obsessive-compulsive disorder (OCD), and is associated with worse symptoms of depression, anxiety, OCD, and somatization (4,5). Screening for these disorders to allow early intervention may be warranted.

In order to allow for a more accurate prioritization of the disorder as a public health priority, we have pursued a comprehensive estimation of the economic burden of PCOS. In previous studies conducted by our team, we estimated the mean annual cost of the initial evaluation of PCOS to be \$93 million, that of hormonally treating menstrual dysfunction/abnormal uterine bleeding to be \$1.35 billion, that of providing infertility care to be \$533 million, and that of

treating hirsutism to be \$622 million in 2014 USD (2). In a more recent study, we estimated the costs of PCOS-associated T2DM and associated stroke to be \$1.5 billion and \$2.4 billion in 2020 USD, respectively (3). The present study aims to assess the direct healthcare-related economic burden of PCOS-related MH disorders. To do so, we conducted a systematic review and meta-analysis of published studies with human subjects and controls that analyzed the relationship between MH disorders and previous diagnosis of PCOS, and then calculated the related direct economic burden.

MATERIALS & METHODS

Systematic Review

A systematic review was performed, adhering to the Preferred Reporting Items for Systematic Reviews and Meta-analyses (PRISMA) Statement and Checklist (<https://www.prisma-statement.org/>), for reports examining the relationship of MH disorders and PCOS through July 16, 2021. The systematic review was conducted on the six English databases (i.e., PubMed, Web of Science, EBSCO, Medline, Scopus, and PsycINFO). The following keywords were used (mental health OR mental illness OR mental disorder OR psych* OR anxiety OR depression OR quality of life OR eating disorder OR bulimia OR postpartum depression) AND ('cost* OR 'economic burden' OR 'cost-of-illness OR 'burden of illness'), "Depressive Disorder/economics"[MAJR], "PCOS" AND "economic burden" OR "costs" OR "cost-of-illness" OR "burden of illness", "PCOS" AND "economic burden" AND "mental health", 'polycystic ovary syndrome' AND 'anxiety, "Polycystic Ovary Syndrome/psychology"[MAJR] (**Supplemental table 1**) (6).

Study eligibility criteria

Studies were eligible for inclusion if they: (a) were original peer-reviewed academic articles; AND (b) were observational studies that presented accurate and precise data regarding the risk,

including reporting relative risks, odds ratios, hazard ratios, or prevalence or incidence rates, of MH disorders in women with PCOS compared with a control group. MH disorders included depressive disorders, such as major depression disorder, dysthymia, minor depression or subclinical/subthreshold depression, or affective disorders containing depressive disorders, emotional distress, eating disorders, or mood and anxiety disorders. In the case of repeatedly published and studied literature based on the same batch of data or sample population the most recent studies with the complete data set were included. Studies were excluded if they: (a) were based on non-human species; (b) did not have full text available; (c) did not include a control group; (d) reported solely on diseases other than PCOS; or (e) were reviews, letters, or commentaries.

Study selection and data extraction

Search strategy and study identification was performed by one investigator (S.Y.) using a standardized approach. Articles selected for inclusion were then screened by four authors (O.D., A.B., S.Y., D.M.). Further, four investigators worked to independently extract data on study characteristics and outcomes (A.B., S.Y., O.D., D.M.). Disagreements were discussed until consensus was reached.

Quality assessment

Four investigators worked in duplicate to independently assess the quality of eligible studies using the Newcastle-Ottawa scale (S.Y., O.D., A.B., R.A.) (https://www.ohri.ca/programs/clinical_epidemiology/oxford.asp).

Statistical analysis

Following the systematic search, the data were submitted to a meta-analysis to estimate the degree of relationship between PCOS and four dichotomous outcomes including anxiety,

depression, eating disorders and postpartum depression. The meta-analysis was performed using the DerSimonian-Laird random effects model (7) and the results of the analyses were summarized using the pooled PR and its 95% confidence intervals for each of the above outcomes.

We should note that when estimating risk, in general we can assume that the odds ratio (OR) approximates the risk ratio when the prevalence in both groups is low ($\sim <10\%$). However, when the prevalence of the outcome is higher the OR is likely to over-estimate of risk ratio. Outcomes for this study were generally higher so we chose to use prevalence ratios (PRs) instead of odds ratios (ORs) for the economic burden calculations. The limitation of using PRs is that these effects were not adjusted for the full set of covariates as for the OR analysis. However, most studies used groups that were matched by age and/or BMI by design.

Study specific and overall effect estimates were visually presented using Forest plots. Between-study heterogeneity was evaluated using the I^2 statistic. In case of significant heterogeneity ($I^2 > 70\%$) sensitivity analyses were performed by excluding any outliers from the analysis. We defined an outlier as any study whose confidence intervals did not overlap the confidence interval of the pooled estimate for the purpose of the sensitivity analysis. Publication bias was assessed using funnel plots. Additionally, to adjust for possible publication bias, we recalculated the results using the 'trim and fill' method (8). Analyses were performed using R version 4.1.3.

As previously (2,3), we defined the prevalence of PCOS based on the NIH criteria (phenotypes A and B of the Rotterdam criteria) or what is considered the 'classic' PCOS phenotypes), which we have conservatively estimated to be 6.6%. Annual cost data for medical treatment of depression for individuals 18-49 years of age was obtained from a 2021 study (9), for anxiety for

201 ages 15-54 was obtained from a 1999 study (10), and for eating disorders for individuals 20-49
202 years of age was obtained from a 2021 study (11). We adjusted for inflation using the medical
203 care inflation calculator (<https://www.officialdata.org/Medical-care/price-inflation/>).

RESULTS

A total of 2018 studies were identified during the initial literature review, of which 78 were screened by title and abstract (**Fig. 1**). Forty-three potentially eligible studies were reviewed in detail, of which 18 were excluded due to insufficient information. For example, some studies did not include information on a control group, did not include measures of association, used a continuous outcome instead of dichotomous outcome, or did not provide information about risk/prevalence that was needed to compute the prevalence ratios. The general characteristics of the 25 included studies (12-36) are detailed in **Supplemental Tables 2-5**.

Excess Prevalence of Anxiety in Women with PCOS

Twelve studies, all assessed as 'high quality' (**Supplemental Table 6**), were initially identified measuring as association between anxiety and PCOS (12-23). However, only ten studies were included in the meta-analysis, as two studies were excluded due to the lack of prevalence data (21,22). Compared to age matched women without PCOS, those with PCOS had a higher prevalence of anxiety in the meta-analysis (random effects PR: 1.42; 95% CI: 1.32, 1.52; I² 43.82%; **Fig. 2A**). For our economic burden calculations, we considered PCOS patients as having a 1.42-fold greater risk of anxiety compared to those without PCOS.

Considering that comparably aged women of the general population have a prevalence of anxiety of 9.15%, the overall prevalence of anxiety in women with PCOS can be estimated to be $1.42 \times 9.15\% = 12.99\%$. The excess prevalence of anxiety due to PCOS is therefore $12.99\% - 9.15\% = 3.84\%$; the excess number of anxiety cases due to PCOS is $5,631,459 \times 3.84\% = 216,248$ individuals.

Excess Prevalence of Depression in Women with PCOS

While fifteen studies were initially identified (12-20, 23-27), we used only the ten studies assessed as being of 'high quality' (**Supplemental Table 6**) for the meta-analysis. Compared to age matched women without PCOS, those with PCOS had a higher prevalence of depression in the meta-analysis (random effects PR: 1.65; 95% CI: 1.44, 1.89; I^2 63.0%; **Fig. 2B**). For our economic burden calculations, we considered PCOS patients as having a 1.65-fold greater risk of depression compared to those without PCOS.

Considering that comparably aged women of the general population have a prevalence of depression of 8.9%, the overall prevalence of depression in women with PCOS can be estimated to be $1.65 \times 8.9\% = 14.69\%$. The excess prevalence of depression due to PCOS is therefore $14.69\% - 8.9\% = 5.79\%$; the excess number of depression cases due to PCOS is $4,528,088 \times 5.79\% = 262,176$ individuals.

Excess Prevalence of Eating Disorders in Women with PCOS

Six studies, all assessed as 'high quality' (**Supplemental Table 6**), were included for an association between eating disorders and PCOS (14,15,19,23,27,28). Compared to age matched women without PCOS, those with PCOS had a higher prevalence of eating disorders in the meta-analysis (random effects PR: 1.48; 95% CI: 1.06, 2.05; I^2 74.41%; **Fig. 2C**).

Considering that comparably aged women of the general population have a prevalence of eating disorders of 2.4%, the overall prevalence of eating disorders in women with PCOS can be estimated to be $1.48 \times 2.4\% = 3.55\%$. The excess prevalence of depression due to PCOS is therefore $3.55\% - 2.4\% = 1.15\%$. Therefore, the excess number of anxiety due to PCOS is $4,240,306 \times 1.15\% = 48,764$ individuals.

Excess Prevalence of Postpartum Depression in Women with PCOS

Six studies, all of high quality (**Supplemental Table 6**), were included examining the association between postpartum depression and PCOS (30-36). Compared to age-matched women without PCOS, those with PCOS had a higher prevalence of postpartum depression in the meta-analysis, however this association did not reach statistical significance (random effects PR: 1.20; 95% CI: 0.96, 1.50; **Fig. 2D**). Because the association between PCOS and postpartum depression was not found to be statistically significant in this meta-analysis, postpartum depression was excluded from our calculations of economic burden.

Economic Burden of Anxiety in Women with PCOS

The cost of anxiety-related care per individual in need was estimated to be \$2,694 in 1990, which converts to \$8,966 in 2021 USD. Therefore, the excess cost of anxiety related care in PCOS is $216,248 \times \$8,966 = \$1,938,879,568$ USD in 2021 (**Table 1**).

Economic Burden of Depression in Women with PCOS

The cost of depression-related care per individual in need was estimated to be \$5,726 in 2018, which converts to \$6,401 in 2021 USD. Therefore, the excess cost of depression related care in PCOS is $262,176 \times \$6,401 = \$1,678,188,576$ USD in 2021 (**Table 1**).

Economic Burden of Eating Disorders in Women with PCOS

The cost of eating disorder-related care per individual in need was estimated to be \$11,808 in 2018, which converts to \$13,200 in 2021 USD. Therefore, the excess cost of eating disorder-related care in PCOS is $48,764 \times \$13,200 = \$643,684,800$ USD in 2021 (**Table 1**).

Analyzing for Potential Publication Bias

To assess for possible publication bias, we recalculated the results using the ‘trim and fill’ method. In the "trim and fill" analysis for PCOS-related anxiety the estimated number of missing studies was 4 and the corresponding pooled random effects PR estimate was 1.40 (95% CI: 1.31, 1.50, $p < 0.001$) (**Supplemental Fig. 1A**). In the "trim and fill" analysis for PCOS-related depression the estimated number of missing studies was 4 and the corresponding pooled random effects PR estimate was 1.50 (95% CI: 1.28, 1.76, $p < 0.0001$) (**Supplemental Fig. 1B**). In the "trim and fill" analysis for PCOS-related eating disorders the estimated number of missing studies was 2 and the corresponding pooled random effects PR estimate was 1.30 (95% CI: 0.92, 1.85; $p = 0.1371$) (**Supplemental Fig. 1C**). We did not analyze the data for PCOS-related postpartum depression using the ‘trim and fill’ approach as these results were already not significant.

That the results for PCOS-related eating disorders are no longer significant after applying the ‘trim and fill’ adjustment means that these results were sensitive to one type of selection bias that is due “small study” effects, i.e., the tendency of small studies to suppress publication of results that are negative. However, we should note that the ‘trim and fill’ method cannot be used as formal proof for the presence of publication bias due to “small study” effects, as it is possible that there are other explanations for the lack of symmetry on the funnel plots, including heterogeneity of study populations, covariates, or outcome definitions that may give rise to a lack of symmetry. However, based on this analysis it appears that the results for this outcome are not as robust as for the other outcomes.

DISCUSSION

In the U.S, the additional direct healthcare costs associated with MH disorders in PCOS were estimated to be \$1.939 billion/yr, \$1.678 billion/yr., and \$0.644 in 2021 USD for anxiety, depression, and eating disorders, respectively. The combined additional direct healthcare costs associated with depression and anxiety in PCOS was estimated to be \$4.261 billion/year in 2021 USD, of which 45% can be attributable to anxiety, 40% to depression, and the remainder to eating disorders. While the prevalence of postpartum depression appeared to be increased in PCOS, the difference did not reach significance on meta-analysis and this outcome was not included in our economic burden calculations.

Taken together, including our prior economic burden assessments (2,3), the total excess economic burden estimated for PCOS exceeds \$15 billion annually in 2021 USD (**Table 2**). Of this cost, approximately 28% will be accounted for the cost of treating PCOS-related MH disorders, including anxiety, depression and eating disorders; 29.5% will be accounted for the cost of treating reproductive endocrine morbidities (menstrual dysfunction/abnormal uterine bleeding, hirsutism, and infertility); 15.1% is attributable to obstetrical and pregnancy related disorders; and 10.1% and 16.1% is attributable to T2DM and strokes, respectively. The cost of the initial diagnostic evaluation of PCOS is very low (\$166 million annually in 2021 USD; **Table 2**), accounting for only 1.1% of the total economic burden attributable to direct healthcare costs of the disorder estimated so far. These data strongly suggest that ensuring quality diagnosis and evaluation for all patients with PCOS is a cost-effective approach to ameliorating the complications and costs associated with the disorder.

For perspective, the estimated direct healthcare costs attributable to ovarian cancer, lung cancer, prostate cancer, and breast cancer, in the U.S. are \$7.8, \$16.8, \$26.7, and \$20.5 billion in 2021 USD, respectively (37), compared to \$15.2 billion for PCOS so far. Furthermore, the

included costs are only for those morbidities that to date have been confirmed as increased in PCOS relative to controls after careful meta-analyses considering the quality of the studies. As further studies are undertaken it is likely that the economic burden of PCOS related to direct healthcare costs will continue to rise.

Liu and colleagues assessed the current burden of PCOS at the global, regional, and country-specific levels in 194 countries and territories according to age and socio-demographic index (SDI) (38). The investigators used data from the Global Burden of Diseases, Injuries and Risk Factors Study (GBD) 2017 to estimate the total and age-standard PCOS incidence rates and the associated disability-adjusted life-years (DALYs) rates among women of reproductive age in both 2007 and 2017, and the trends in these parameters from 2007 to 2017. The data sources used in GBD take many forms, including census data, vital registrations, disease registries, survey data, and published and unpublished scientific literature, among other sources (<https://www.healthdata.org/acting-data/what-data-sources-go-gbd>). These investigators concluded that PCOS accounted for 0.43 million associated DALYs. They also noted slight increases in the age-standardized incidence of PCOS and DALYs among women of reproductive age (15–49 years) from 2007 to 2017 at the global level, and in most regions and countries. Safiri and colleagues also used the GDB Study 2017 database to determine the global, regional, and national burden of PCOS, by age and sociodemographic index (SDI), over the period 1990–2019 (39). These investigators reported that in 2019 the global age-standardized point prevalence and annual incidence rates for PCOS were 1677 (1.7%) and 59 (0.06%) per 100,000, respectively.

Neither one of these studies estimated the economic cost of the burden observed. Furthermore, we should note that Liu et al. (38) reported only on global age-standardized PCOS incidence rates (i.e., the occurrence of new cases of PCOS over a specified period of time), not

prevalence rates (i.e., the total proportion of persons in the population who have PCOS at a specified point in time or over a specified period of time), among women of reproductive age. While Safiri and colleagues (39) present an estimate of prevalence, we should note that the estimate is significantly lower than that reported when populations are assessed directly for the prevalence of PCOS (1.7% vs. 6.6% or greater), likely reflecting the chronic underdiagnosis of PCOS.

Ding and colleagues estimated the burden of disease attributable to Type 2 DM in women with PCOS using individual patient data from a UK primary care database between 2004 and 2014 and aggregate data from the literature to obtain conversion rates through disease progression (40). A simulation approach was applied to model the population dynamics of PCOS over a follow-up period of 25 years in using Bayesian modeling. The investigators estimated that the associated annual healthcare burden of T2DM in PCOS was at least £237 million in 2014 pounds in the UK. Taking into account the relative populations of reproductive aged women (15-49 years) of the UK and the U.S. (14.7 million vs. 76.5 million) (41), the healthcare inflation rate since 2014 (19.2%), and the conversion rate of pounds to dollars in mid-2021 (0.72 USD to 1 pound), the economic burden for PCOS-associated T2DM estimated by Ding et al is equivalent to \$2.04 billion 2021 USD, somewhat higher than the \$1.527 2021 USD that we previously estimated (**Table 2**) (3).

Inclusion of only peer-reviewed and controlled studies is a strength of this study. Alternatively, our analysis was limited by the number of studies that met inclusion criteria. This could be due to the fact that PCOS diagnosis creates an umbrella effect that encompasses physical as well as mental disease which creates a false belief in patients that they cannot be treated or diagnosed with a disease other than PCOS due to the misconception that their symptoms stem solely from the PCOS diagnosis. Other limitations of this study include the fact that while the

cost estimates were conducted with for the U.S., the meta-analysis used some studies from other countries. Finally, while other MH disorders have been shown to be associated with PCOS, such as bipolar disorder and obsessive-compulsive disorder, we focused our study on the four most common disorders found in the literature (4,5).

Overall, our current study suggests that the additional direct healthcare costs due to PCOS-related anxiety, depression and eating disorders exceeds \$4 billion annually in 2021 USD in the United States. So far, the total direct economic burden of PCOS exceeds \$15 billion annually in 2021 USD, and MH disorders account for almost one-third of these costs. Notably, these estimates are solely for the United States and PCOS is a global disease. As PCOS is clinically most apparent during the reproductive age, we should note that the number of women between the ages of 15 and 49 worldwide is estimated to be about 1.9 billion (41). Taking into account that most studies assessing the prevalence of PCOS report a minimum rate similar to what was used on the present study (i.e., 6.6% based on the NIH criteria) (42), we can estimate that there are at least 125.4 million women affected with PCOS worldwide. Consequently, the world-wide economic burden for PCOS can be assumed to be enormous.

While we have examined the direct economic burden related to the medical or health-related costs of the disorder, we should note that a complete understanding of the economic burden of the disorder requires that we also assess the indirect (those attributable to loss of work productivity) and intangible (those related to the pain and sufferings of patients because of a disorder, usually measured by using the reduction in quality of life) costs of the disorder. In conclusion, these data suggest that improved detection of PCOS and more significant clinical awareness and interventions for PCOS and its associated disorders is a cost-effective approach to ameliorating the economic, health, and quality of life impact of PCOS. Finally, our findings

further highlight the need to increase investment in PCOS research, which is currently severely underfunded relative to the economic burden of the disorder (43).

REFERENCES

1. Azziz R, Carmina E, Chen Z, Dunaif A, Laven JS, Legro RS, Lizneva D, Natterson-Horowitz B, Teede HJ, Yildiz BO. Polycystic ovary syndrome. *Nat Rev Dis Primers*. 2016;2:16057.
2. Azziz R, Marin C, Hoq L, Badamgarav E, Song P. Health care-related economic burden of the polycystic ovary syndrome during the reproductive life span. *J Clin Endocrinol Metab*. 2005;90:4650-8.
3. Riestenberg C, Jagasia A, Markovic D, Buyalos RP, Azziz R. Health care-related economic burden of polycystic ovary syndrome in the United States: Pregnancy-related and long-term health consequences. *J Clin Endocrinol Metab*. 2022;107:575-585.
4. Himelein MJ, Thatcher SS. Polycystic ovary syndrome and mental health: A review. *Obstet Gynecol Surv*. 2006;61:723-32.
5. Brutocao C, Zaiem F, Alsawas M, Morrow AS, Murad MH, Javed A. Psychiatric disorders in women with polycystic ovary syndrome: a systematic review and meta-analysis. *Endocrine*. 2018;62:318-325.
6. Azziz R. Economic Burden of Mental Health Disorders in PCOS-Supplementary Data [Data set]. Zenodo. 2022; <https://doi.org/10.5281/zenodo.7478354>.
7. DerSimonian R, Laird N. Meta-analysis in clinical trials. *Control Clin Trials*. 1986;7:177-88.
8. Shi L, Lin L. The trim-and-fill method for publication bias: practical guidelines and recommendations based on a large database of meta-analyses. *Medicine (Baltimore)*. 2019;98:e15987.

9. Greenberg PE, Fournier AA, Sisitsky T, Simes M, Berman R, Koenigsberg SH, Kessler RC. The Economic burden of adults with major depressive disorder in the United States (2010 and 2018). *Pharmacoeconomics*. 2021;39:653-665.
10. Greenberg PE, Sisitsky T, Kessler RC, Finkelstein SN, Berndt ER, Davidson JR, Ballenger JC, Fyer AJ. The economic burden of anxiety disorders in the 1990s. *J Clin Psychiatry*. 1999;60:427-35.
11. Streatfeild J, Hickson J, Austin SB, Hutcheson R, Kandel JS, Lampert JG, Myers EM, Richmond TK, Samnaliev M, Velasquez K, Weissman RS, Pezzullo L. Social and economic cost of eating disorders in the United States: Evidence to inform policy action. *Int J Eat Disord*. 2021;54:851-868.
12. Alur-Gupta S, Chemerinski A, Liu C, Lipson J, Allison K, Sammel MD, Dokras A. Body-image distress is increased in women with polycystic ovary syndrome and mediates depression and anxiety. *Fertil Steril*. 2019;112:930-938.e1.
13. Tan J, Wang QY, Feng GM, Li XY, Huang W. Increased risk of psychiatric disorders in women with polycystic ovary syndrome in southwest China. *Chin Med J (Engl)*. 2017;130:262-266.
14. Karjula S, Morin-Papunen L, Auvinen J, et al. Psychological distress is more prevalent in fertile age and premenopausal women with PCOS symptoms: 15-year follow-up. *J Clin Endocrinol Metab*. 2017;102:1861-1869.
15. Tay CT, Teede HJ, Loxton D, Kulkarni J, Joham AE. Psychiatric comorbidities and adverse childhood experiences in women with self-reported polycystic ovary syndrome: An Australian population-based study. *Psychoneuroendocrinology*. 2020;116:104678.
16. Kaur SP, Sharma S, Lata G et.al. Prevalence of anxiety, depression and eating disorders in women with polycystic ovarian syndrome in North Indian Population of Haryana. *Galore International Journal of Health Sciences & Research*. 2019;4:61-67.

17. Asik M, Altinbas K, Eroglu M, et al. Evaluation of affective temperament and anxiety-depression levels of patients with polycystic ovary syndrome. *J Affect Disord.* 2015;185:214-218.
18. Cesta CE, Månsson M, Palm C, Lichtenstein P, Iliadou AN, Landén M. Polycystic ovary syndrome and psychiatric disorders: Co-morbidity and heritability in a nationwide Swedish cohort. *Psychoneuroendocrinology.* 2016;73:196-203.
19. Hussain A, Chandel RK, Ganie MA, et al. Prevalence of psychiatric disorders in patients with a diagnosis of polycystic ovary syndrome in Kashmir. *Indian J Psychol Med.* 2015;37:66-70.
20. Månsson M, Holte J, Landin-Wilhelmsen K, Dahlgren E, Johansson A, Landén M. Women with polycystic ovary syndrome are often depressed or anxious--a case control study. *Psychoneuroendocrinology.* 2008;33:1132-1138.
21. Jedel E, Waern M, Gustafson D, et al. Anxiety and depression symptoms in women with polycystic ovary syndrome compared with controls matched for body mass index. *Hum Reprod.* 2010;25:450-456.
22. Li SJ, Zhou DN, Li W, Yang J. Mental health status assessment in polycystic ovarian syndrome infertility patients: A pilot study. *J Huazhong Univ Sci Technolog Med Sci.* 2017;37:750-754.
23. Damone AL, Joham AE, Loxton D, Earnest A, Teede HJ, Moran LJ. Depression, anxiety and perceived stress in women with and without PCOS: a community-based study. *Psychological Medicine.* 2019;49:1510-1520.
24. Hollinrake E, Abreu A, Maifeld M, Van Voorhis BJ, Dokras A. Increased risk of depressive disorders in women with polycystic ovary syndrome. *Fertil Steril.* 2007;87:1369-1376.

25. Pastore LM, Patrie JT, Morris WL, Dalal P, Bray MJ. Depression symptoms and body dissatisfaction association among polycystic ovary syndrome women. *J Psychosom Res.* 2011;71:270-276.
26. Cinar N, Kizilarslanoglu MC, Harmanci A, et al. Depression, anxiety and cardiometabolic risk in polycystic ovary syndrome. *Hum Reprod.* 2011;26:3339-3345.
27. Adali E, Yildizhan R, Kurdoglu M, et al. The relationship between clinico-biochemical characteristics and psychiatric distress in young women with polycystic ovary syndrome. *J Int Med Res.* 2008;36:1188-1196.
28. Lee I, Cooney LG, Saini S, et al. Increased risk of disordered eating in polycystic ovary syndrome. *Fertil Steril.* 2017;107:796-802.
29. Pirodda S, Barillaro M, Brennan L, et al. Disordered Eating Behaviours and Eating Disorders in Women in Australia with and without Polycystic Ovary Syndrome: A Cross-Sectional Study. *J Clin Med.* 2019;8:1682.
30. Koric A, Singh B, VanDerslice JA, et al. Polycystic ovary syndrome and postpartum depression symptoms: a population-based cohort study. *Am J Obstet Gynecol.* 2021;224:591.e1-591.e12.
31. Joham AE, Nanayakkara N, Ranasinha S, et al. Obesity, polycystic ovary syndrome and breastfeeding: an observational study. *Acta Obstet Gynecol Scand.* 2016;95:458-466.
32. Muchanga SMJ, Yasumitsu-Lovell K, Eitoku M, et al. Preconception gynecological risk factors of postpartum depression among Japanese women: The Japan Environment and Children's Study (JECS). *J Affect Disord.* 2017;217:34-41.
33. March WA, Whitrow MJ, Davies MJ, Fernandez RC, Moore VM. Postnatal depression in a community-based study of women with polycystic ovary syndrome. *Acta Obstet Gynecol Scand.* 2018;97:838-844.

34. Tay CT, Teede HJ, Boyle JA, Kulkarni J, Loxton D, Joham AE. Perinatal mental health in women with polycystic ovary syndrome: A cross-sectional analysis of an Australian population-based cohort. *J Clin Med*. 2019;8:2070.
35. Alur-Gupta S, Boland MR, Barnhart KT, Sammel MD, Dokras A. Postpartum complications increased in women with polycystic ovary syndrome. *Am J Obstet Gynecol*. 2021;224:280.e1-280.e13.
36. Fugal AD, Stanford JB, Johnstone EB, Kah K, Schliep KC. Polycystic ovary syndrome and postpartum depression among Hispanics and non-Hispanics: A population-based study. *AJOG Glob Rep*. 2022;2:100070.
37. Waters H, Graf M. The costs of chronic disease in the U.S., August 2018, Milken Institute: Santa Monica, CA (https://milkeninstitute.org/sites/default/files/reports-pdf/ChronicDiseases-HighRes-FINAL_2.pdf).
38. Liu J, Wu Q, Hao Y, Jiao M, Wang X, Jiang S, Han L. Measuring the global disease burden of polycystic ovary syndrome in 194 countries: Global Burden of Disease Study 2017. *Hum Reprod*. 2021;36:1108-1119.
39. Safiri S, Noori M, Nejadghaderi SA, Karamzad N, Carson-Chahhoud K, Sullman MJM, Collins GS, Kolahi AA, Avery J. Prevalence, incidence and years lived with disability due to polycystic ovary syndrome in 204 countries and territories, 1990-2019. *Hum Reprod*. 2022;37:1919-1931.
40. Ding T, Hardiman PJ, Petersen I, Baio G. Incidence and prevalence of diabetes and cost of illness analysis of polycystic ovary syndrome: a Bayesian modelling study. *Hum Reprod*. 2018;33:1299-1306.
41. United Nations, Department of Economic and Social Affairs, Population Division (2022). World Population Prospects 2022, Online Edition ([https://population.un.org/wpp/Download/Files/1_Indicators%20\(Standard\)/EXCEL_FILE](https://population.un.org/wpp/Download/Files/1_Indicators%20(Standard)/EXCEL_FILE)

[S/2 Population/WPP2022 POP F03 3 POPULATION SELECT AGE GROUPS FE MALE.xlsx](#)).

42. Bozdag G, Mumusoglu S, Zengin D, Karabulut E, Yildiz BO. The prevalence and phenotypic features of polycystic ovary syndrome: a systematic review and meta-analysis. Hum Reprod. 2016;31:2841-2855.
43. Brakta S, Lizneva D, Mykhalchenko K, Imam A, Walker W, Diamond MP, Azziz R. Perspectives on polycystic ovary syndrome: Is polycystic ovary syndrome research underfunded? J Clin Endocrinol Metab. 2017;102:4421-4427.

Table 1. ESTIMATES OF THE EXCESS PREVALENCE AND ECONOMIC BURDEN ASSOCIATED WITH MENTAL HEALTH (MH) MORBIDITIES OF PCOS AS OF 2021 IN THE UNITED STATES

MH Morbidities	Excess Prevalence of Morbidity in PCOS (%)	Annual costs in billions in 2021 USD (% of total costs in category)
Anxiety	3.84%	\$1.939 (45.5%)
Depression	5.79%	\$1.678 (39.4%)
Eating disorders	1.15%	\$0.644 (15.1%)
Total excess cost of MH disorders in PCOS		4.261 (100%)

541

542

Table 2. DIRECT HEALTHCARE-RELATED ECONOMIC BURDEN IN PCOS AS OF 2021 IN THE UNITED STATES

Process/Disorder	Original year economic burden published (reference)	Economic burden year of publication (in billions)*	Economic burden in 2021 USD (in billions)	% of total economic burden
Initial evaluation	2004 (2)	\$0.093	0.166	1.09%
Menstrual dysfunction/AUB	2004 (2)	\$1.350	2.408	15.88%
Infertility care	2004 (2)	\$0.533	0.951	6.27%
Hirsutism	2004 (2)	\$0.622	1.109	7.31%
GDM**	2020 (3)	\$0.672**	0.684	4.51%
gHTN**	2021 (3)	\$0.208**	0.212	1.40%
Preeclampsia**	2022 (3)	\$0.137**	1.400	9.23%
T2DM	2023 (3)	\$1.500	1.527	10.07%
Stroke	2024 (3)	\$2.400	2.445	16.12%
Anxiety	2021	Present study	1.939	12.79%
Depression	2021	Present study	1.678	11.07%
Eating Disorders	2021	Present study	0.644	4.25%
Total			15.163	100.00%

Abbreviations: AUB is abnormal uterine bleeding, GDM is gestational diabetes, gHTN is gestational hypertension, and T2DM is type 2 diabetes mellitus.

* Updated for inflation using medical CPI (<https://www.in2013dollars.com/Medical-care-services/price-inflation>).

** Estimates of economic burden in prior publication updated for inflation using medical CPI (<https://www.in2013dollars.com/Medical-care-services/price-inflation>).

543

FIGURE LEGENDS

Fig 1. Flow diagram of the literature search and study selection process.

Fig. 2. Meta-analyses of the prevalence of mental health disorders in women with PCOS. Forest plots (random effects model) of risk of mental health disorders in women with PCOS, including anxiety (Fig. 2A), depression (Fig. 2B), eating disorders (Fig. 2C), and postpartum depression (Fig. 2D.). See text for abbreviations.

Fig. 1

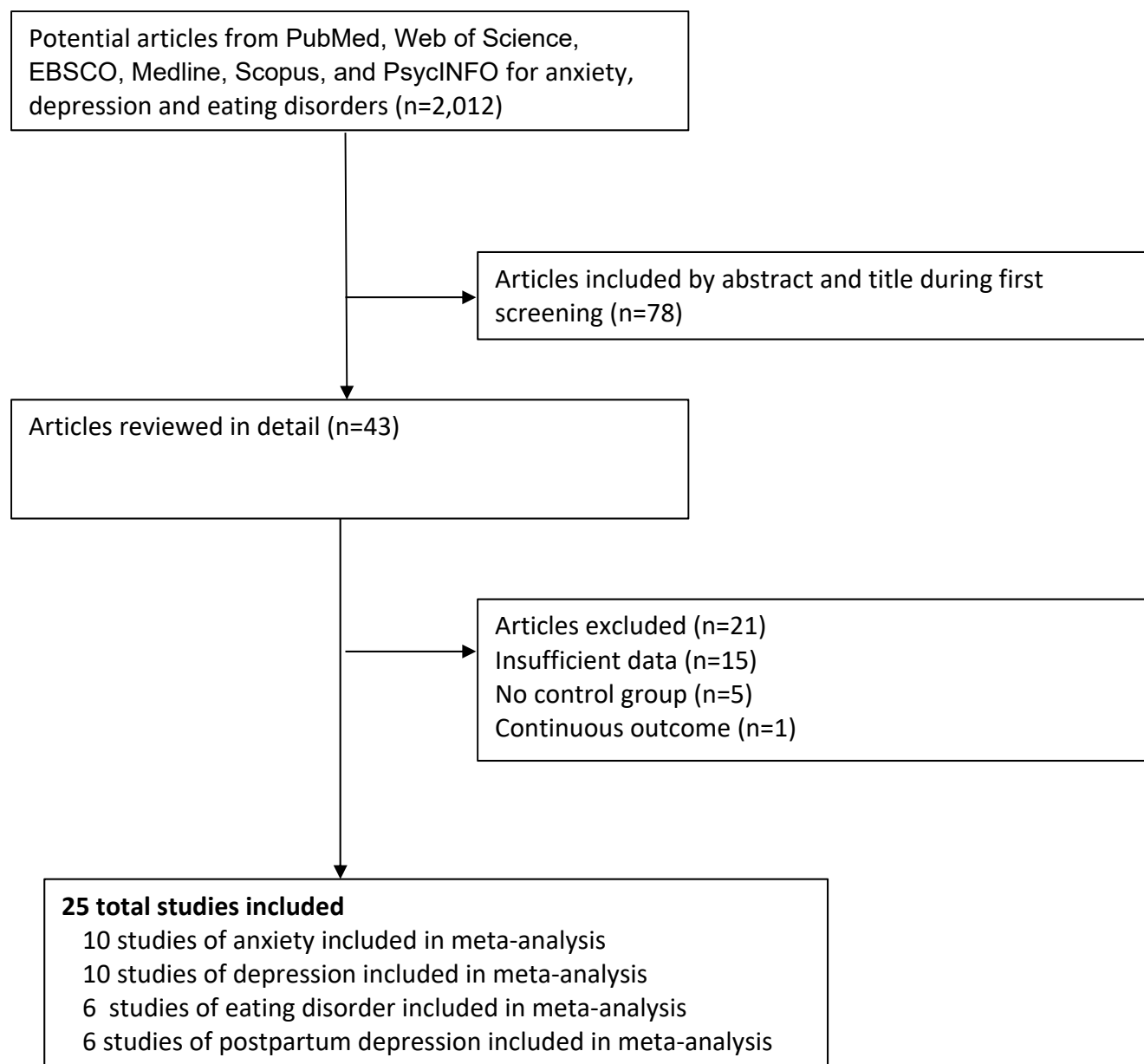
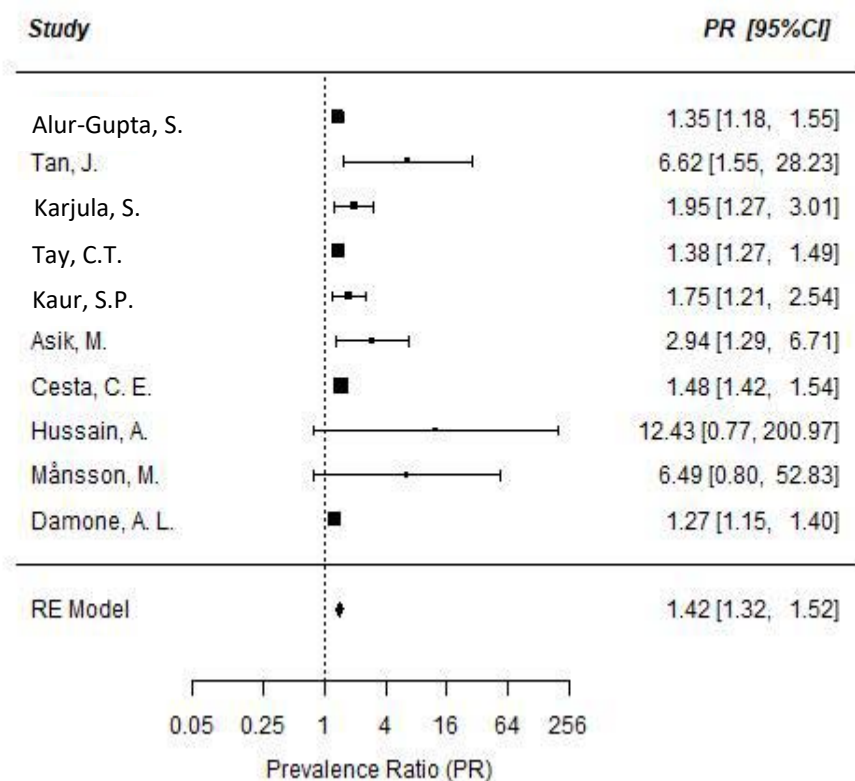


Fig. 2A



Note: Studies by Jedel et al. (20) and Li et al. (21) were excluded from the meta-analysis due to the lack of prevalence data.

Fig. 2B

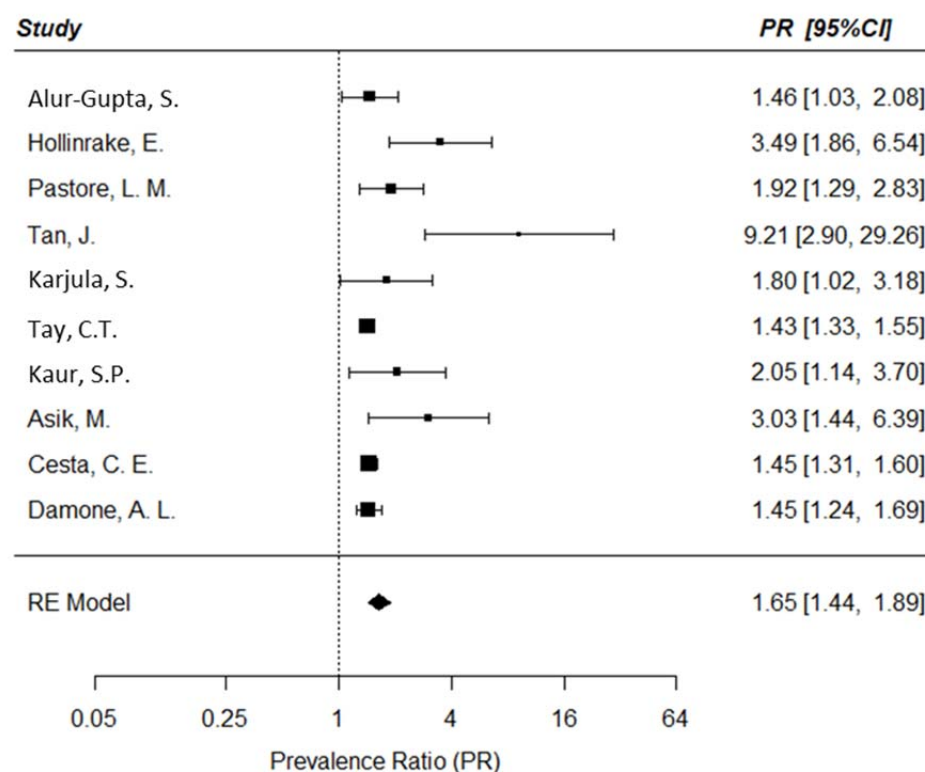


Fig 2C.

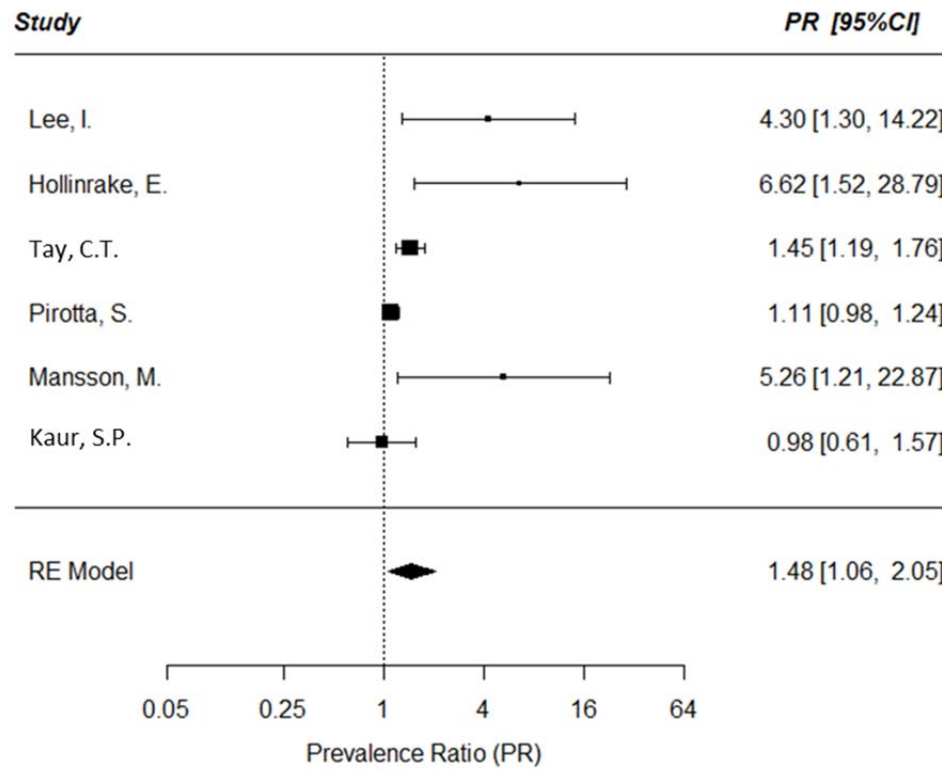
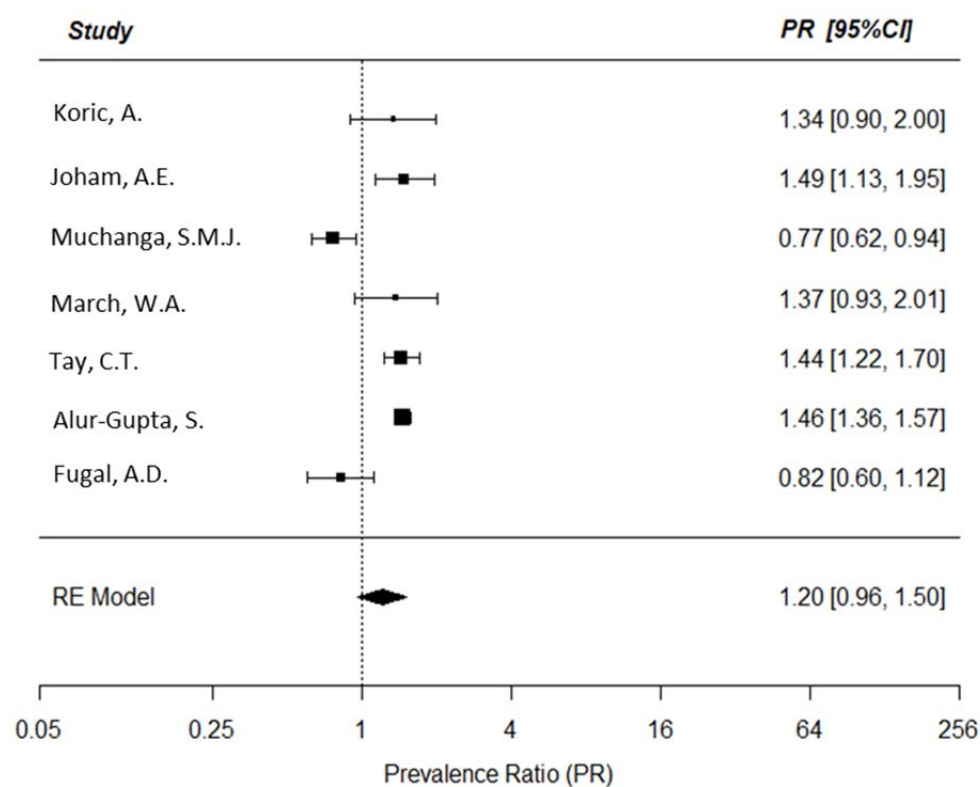


Fig 2D.



Supplementary Table 1. Search terms used for systematic review

Topic	Keywords
Mental Disorders in PCOS	"Polycystic Ovary Syndrome/psychology"[MAJR]
	'polycystic ovary syndrome' AND 'mental disorder' OR 'depression' OR 'anxiety'
	'polycystic ovary syndrome' AND 'mental illness'
	("polycystic ovary syndrome" AND "mental disorder") AND (LIMIT-TO (LANGUAGE, "English"))
Direct costs for Mental Disorders in PCOS	"PCOS" AND "economic burden" OR "costs" OR "cost-of-illness" OR "burden of illness" AND "mental health"
	"PCOS" AND "economic burden" AND "mental health"
Economic burden of Mental Disorders	(mental health OR mental illness OR mental disorder OR psych* OR anxiety OR depression OR quality of life OR bulimia OR bipolar disorder) AND ('cost*' OR 'economic burden' OR 'cost-of-illness' OR 'burden of illness')
	"Depressive Disorder/economics"[MAJR]
	"Depressive Disorder/economics"[MAJR]

Supplementary Table 2. Characteristics of Included Studies Categorized by Anxiety

Study	Year of Publication	Country	Study Design	Total Sample Size per Group	PCOS Definition
Alur-Gupta et al. ¹¹	2019	US	Case-Control	PCOS= 189 Controls= 225	Rotterdam Criteria
Tan et al. ¹²	2017	China	Case-Control	PCOS= 120 Controls= 100	Rotterdam Criteria
Karjula et al. ¹³	2017	Finland	Population-based Cohort Study	PCOS= 125 Controls= 2188	Self-reported PCOS
Tay et al. ¹⁴	2020	Australia	Cross-Sectional	PCOS=760 Controls= 7910	Self-reported PCOS
Kaur et al. ¹⁵	2019	India	Cross-Sectional	PCOS= 73 Controls= 78	Rotterdam Criteria
Asik et al. ¹⁶	2015	Germany	Cross-sectional	PCOS=71 Controls= 50	Rotterdam Criteria
Cesta et al. ¹⁷	2016	Sweden	Matched Cohort Design	PCOS= 24385 Controls= 243850	ICD-8, ICD-9, ICD-10 codes
Hussain et al. ¹⁸	2015	India	Case-Control	PCOS=110 Controls=40	Diagnosis of PCOS was confirmed according to the National Institute of Health/National Institute of Child Health and Human Development, 1990 consensus conference criteria
Mansson et al. ¹⁹	2008	Sweden	Case-Control	PCOS= 49 Controls= 49	Rotterdam Criteria
Jedel et al. ²⁰	2009	Sweden	Case-Control	PCOS=30 Controls=30	12 or more 2–9 mm ovarian follicles and/or ovarian volume exceeding 10 ml in one or two ovaries; clinical signs of hyperandrogenism and/or oligo/amenorrhea.
Li et al. ²¹	2017	China	observational	PCOS= 103 Controls=110	Rotterdam Criteria
Damone et al. ²²	2018	Australia	cross sectional analysis	PCOS=478 Controls=8134	Self-reported PCOS

599

600 **Supplementary Table 3. Characteristics of Included Studies Categorized by Depression**

601

Study	Year	Country	Study Design	Total Sample Size per Group	PCOS Definition
Alur-Gupta et al. ¹¹	2019	US	Cross-sectional	PCOS= 189 Controls= 225	Rotterdam criteria
Hollinrake et al. ²³	2006	US	Prospective longitudinal study	PCOS= 103 Controls= 103	Rotterdam criteria
Pastore et al. ²⁴	2004	US	Cross-sectional	PCOS= 94 Controls= 96	Diagnosis of PCOS, as confirmed through the study using the NICHD criteria of oligomenorrheic and non-diabetic, with self-reported hirsutism and/or acne and/or elevated free testosterone (>6.8 pg/ml)
Tan et al. ¹²	2017	China	Case-control	PCOS= 120 Controls= 100	Rotterdam criteria
Karjula et al. ¹³	2017	Finland	Population-based follow-up	PCOS= 125 Controls= 2188	Self-reported PCOS
Tay et al. ¹⁴	2020	Australia	Cross sectional study	PCOS=760 Controls= 7910	Self-reported PCOS
Kaur et al. ¹⁵	2019	India	Cross sectional case control study	PCOS= 73 Controls= 78	Rotterdam criteria
Asik et al. ¹⁶	2015	Germany	Cross-sectional	PCOS=71 Controls=50	Rotterdam criteria
Cesta et al. ¹⁷	2016	Sweden	Matched cohort design	PCOS= 24385 Controls= 243850	ICD-8, ICD-9, ICD-10 codes
Cinar et al. ²⁵	2011	Turkey	Case control	PCOS= 226 Controls=85	Rotterdam criteria
Hussain et al. ¹⁸	2015	India	Case control	PCOS=110	Diagnosis of PCOS was confirmed

				Controls=40	according to the National Institute of Health/National Institute of Child Health and Human Development, 1990 consensus conference criteria
Mansson et al. ¹⁹	2008	Sweden	Case-control study	PCOS= 49 Controls= 49	Rotterdam criteria
Adali et al. ²⁶	2008	Turkey	Case control study	PCOS=42 Controls=42	Positive diagnosis is based on the patient presenting any two of the following three features: oligo- or anovulation, clinical and/or biochemical signs of hyperandrogenism, and polycystic ovaries on ultrasound examination
Damone et al. ²²	2018	Australia	Cross-sectional	PCOS=478 Controls=8134	Self-reported PCOS
Jedel et al. ²⁰	2010	Sweden	Case control	PCOS=30 Controls=30	12 or more 2–9 mm ovarian follicles and/or ovarian volume exceeding 10 ml in one or two ovaries; clinical signs of hyperandrogenism and/or oligo/amenorrhea.

602

603

604 **Supplementary Table 4. Characteristics of Included Studies Categorized by Eating Disorders**

605

Study	Year	Country	Study Design	Total Sample Size per Group	PCOS Definition
Lee et al. ²⁷	2015-16	US	Cross-sectional study	PCOS = 148 Controls = 106	Rotterdam criteria
Hollinrake et al. ²³	2006	US	Prospective Cohort Study	PCOS= 103 Controls= 103	Rotterdam Criteria
Tay et al. ¹⁴	2020	Australia	Cross-Sectional	PCOS= 875 Controls= 7592	Self-reported PCOS
Pirotta et al. ²⁸	2019	Australia	Cross-Sectional	PCOS= 501 Controls= 398	Self-reported PCOS
Kaur et al. ¹⁵	2019	India	Cross-Sectional	PCOS= 73 Controls= 78	Rotterdam Criteria
Mansson et al. ¹⁹	2008	Sweden	Case-control	PCOS= 49 Controls= 49	Rotterdam Criteria

606

607

608

Supplementary Table 5. Characteristics of Included Studies Categorized by Postpartum Depression

Study	Year	Country	Study Design	Total Sample Size per Group	PCOS Definition
Koric et al. ²⁹	2021	US	Cases= 320 Controls= 3586	PCOS= 320 Controls= 3586	“Have you ever been told that you have Polycystic Ovarian Syndrome or PCOS by a doctor, nurse, or other healthcare worker?” PCOS symptomatology was defined in possible alternate ways as having (1) irregular periods and acne, (2) irregular periods and hirsutism, or (3) irregular periods, acne, and hirsutism.
Joham et al. ³⁰	2016	Australia	Cross-Sectional	PCOS= 320 Controls= 4578	Self-reported PCOS
Muchanga et al. ³¹	2017	Japan	Population-based Prospective Birth Cohort Study	Cases with postpartum depression= 11,341 Controls without postpartum depression= 71,148	Self-reported PCOS
March et al. ³²	2018	Australia	Cross-Sectional	PCOS= 52 Controls= 514	Rotterdam Criteria
Tay et al. ³³	2019	Australia	Cross-Sectional	PCOS= 436 Controls= 4803	Self-reported PCOS
Alur-Gupta et al. ³⁴	2021	US	Retrospective Cohort Study	PCOS= 42,391 Controls= 795,480	ICD-9, ICD-10
Fugal et al. ³⁵	2022	US	Population-based Study	PCOS= 3,280 Controls= 48,348	Rotterdam Criteria

Supplementary Table 6. Quality scores of studies using Newcastle-Ottawa Scale

Study	Selection				Comparability	Outcome			NOS
	Representative-ness of the exposed cohort	Adequate control selection	Adequate end-point definition	Demonstration that outcomes was not present at start of study	Comparability on the basis of the design or analysis	Assessment of outcome	Adequate follow-up duration	Adequate follow-up rate	Overall score
Anxiety									
Alur-Gupta et al. ¹¹	1	1	1	1	1	1	1	1	8
Tan et al. ¹²	1	1	1	1	0	1	1	1	7
Karjula et al. ¹³	0	1	1	1	1	1	1	1	7
Tay et al. ¹⁴	1	1	1	1	1	1	1	1	8
Kaur et al. ¹⁵	1	1	1	1	0	1	1	1	7
Asik et al. ¹⁶	0	1	1	1	1	1	1	1	7
Cesta et al. ¹⁷	1	1	1	1	2	1	0	0	7
Hussain et al. ¹⁸	0	1	1	1	1	1	1	1	7
Mansson et al. ¹⁹	0	1	1	1	1	1	1	1	7
Jedel et al. ²⁰	1	1	1	1	0	1	1	1	7
Li et al. ²¹	1	1	1	1	1	1	1	1	8
Damone et al. ²²	1	1	1	1	1	1	1	0	7
Mean NOS overall score for Anxiety									7.25
Depression									
Alur-Gupta et al. ¹¹	1	1	1	1	1	1	1	1	8

Hollinrake et al. ²³	1	1	1	1	1	1	1	1	8
Pastore et al. ²⁴	0	1	1	1	2	1	1	1	8
Tan et al. ¹²	1	1	1	1	0	1	1	1	7
Karjula et al. ¹³	0	1	1	1	1	1	1	1	7
Tay et al. ¹⁴	1	1	1	1	1	1	1	1	8
Kaur et al. ¹⁵	1	1	1	1	0	1	1	1	7
Asik et al. ¹⁶	0	1	1	1	1	1	1	1	7
Cesta et al. ¹⁷	1	1	1	1	2	1	0	0	7
Cinar et al. ²⁵	0	0	1	0	0	1	1	1	4
Hussain et al. ¹⁸	0	1	1	0	0	0	0	0	2
Mansson et al. ¹⁹	0	1	1	0	0	1	0	0	3
Adali et al. ²⁶	0	0	1	1	0	1	1	0	4
Damone et al. ²²	1	1	1	1	1	1	1	0	7
Jedel et al. ²⁰	0	1	1	0	0	1	1	1	5
Mean NOS overall score for depression									6.13
Eating Disorder									
Lee et al. ²⁷	1	1	1	1	1	1	1	1	8
Hollinrake et al. ²³	1	1	1	1	1	1	1	1	8
Tay et al. ¹⁴	1	1	1	1	1	1	1	1	8
Pirotta et al. ²⁸	1	1	1	1	1	1	1	1	8

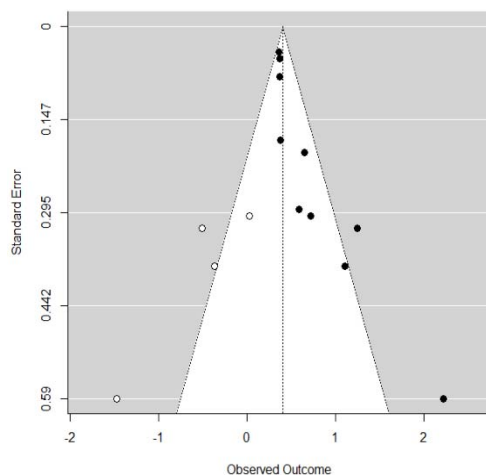
Kaur et al. ¹⁵	1	1	1	1	0	1	1	1	7
Mansson et al. ¹⁹	0	1	1	1	1	1	1	1	7
Mean NOS overall score for eating disorders									7.67
Postpartum Depression									
Koric et al. ²⁹	1	1	1	1	1	1	1	1	8
Joham et al. ³⁰	1	1	1	1	1	1	1	1	8
Muchanga et al. ³¹	1	1	1	1	1	1	1	1	8
March et al. ³²	0	1	1	1	1	1	1	1	7
Tay et al. ³³	1	1	1	1	1	1	1	1	8
Alur-Gupta et al. ³⁴	1	1	1	1	1	1	1	1	8
Fugal et al.. ³⁵	0	1	1	1	1	1	1	1	7
Mean NOS overall score for postpartum depression									7.71

609
610
611
612
613

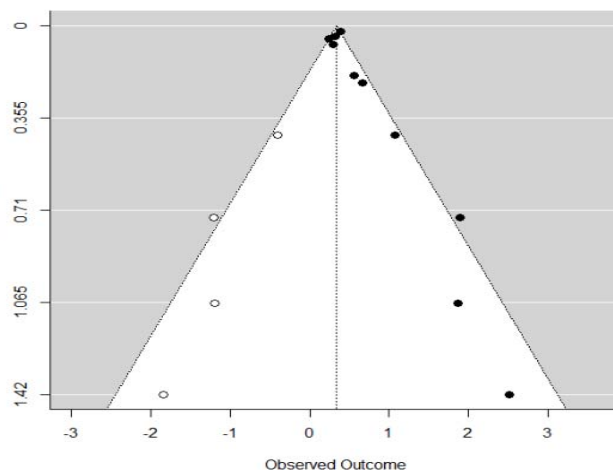
Supplemental Figure 1. Trim and Fill Funnel Plots for the meta-analyses of anxiety, depression, and eating disorders.

Trim and fill funnel plots (X axis is the log prevalence ratio/risk ratio; Y axis is the standard error of the log prevalence ratio/risk ratio) include 10 high quality studies for anxiety (**Supplemental Fig. 1A**), 10 high quality studies for depression (**Supplemental Fig. 1B**), and 6 high quality studies for eating disorders (**Supplemental Fig. 1C**). Observed studies are indicated by solid circles, and "filled" studies are indicated by open circles.

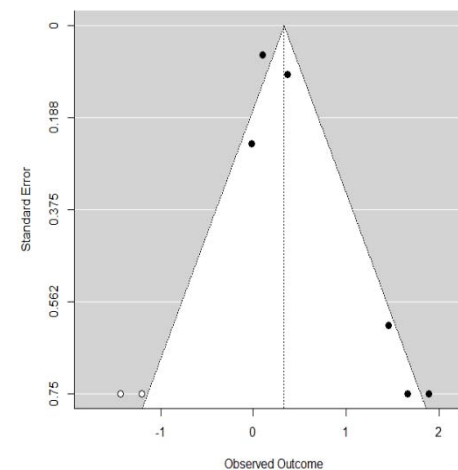
The results of the trim and fill analysis indicated that the pooled estimate for anxiety was robust to "small study" effects. The pooled estimate for depression may be slightly overestimated due to the suppression of more negative results on the left side of the funnel plot for smaller studies. It is likely that the over-estimation in the results for depression and eating disorders is caused by publication bias, but this cannot be formally proven. Alternative explanations of funnel plot asymmetry are possible. For example, funnel plot asymmetry can be caused by between study heterogeneity. Different studies may estimate different effects due to differences in study design, characteristics of the study sample, outcome definitions or geographic location. For depression, the removal of one outlier (study by Tan et al [12]) from the meta-analysis eliminated about 30% of the between-study heterogeneity.



Supplemental Fig. 1A



Supplemental Fig. 1B



Supplemental Fig. 1C