

Vaccine-elicited B and T cell immunity to SARS-CoV-2 is impaired in chronic lung disease patients

Authors: Haolin Liu¹, Katja Aviszus¹, Pearlanne Zelarney², Shu-Yi Liao^{3,4,5}, Anthony N. Gerber^{1,3,5,6}, Barry Make^{3,6}, Michael E. Wechsler^{3,6}, Philippa Marrack^{1,7}, and R. Lee Reinhardt^{1,7}

Affiliations:

1 Department of Immunology and Genomic Medicine, National Jewish Health, Denver, CO, 80206, USA.

2 Research Informatics Services, National Jewish Health, Denver, CO, 80206, USA.

3 Department of Medicine, National Jewish Health, Denver, CO, 80206, USA.

4 Division of Environmental and Occupational Health Sciences, National Jewish Health, Denver CO, 80206, USA.

5 Department of Medicine, University of Colorado Anschutz Medical Campus, Aurora, CO, 80045, USA.

6 Division of Pulmonary, Critical Care and Sleep Medicine, National Jewish Health, Denver CO, 80206, USA.

7 Department of Immunology and Microbiology, University of Colorado Anschutz Medical Campus, Aurora, CO, 80045, USA.

Running Title: SARS-CoV-2 vaccine response in chronic lung disease

23

24 **Key words:** COVID-19, vaccination, chronic obstructive pulmonary disease, interstitial

25 lung disease, asthma

Abstract:

The protection afforded by vaccination against severe acute respiratory syndrome coronavirus 2 (SARS-CoV-2) to individuals with chronic lung disease is not well established. To understand how chronic lung disease impacts SARS-CoV-2 vaccine-elicited immunity we performed deep immunophenotyping of the humoral and cell mediated SARS-CoV-2 vaccine response in an investigative cohort of vaccinated patients with diverse pulmonary conditions including asthma, chronic obstructive pulmonary disease (COPD), and interstitial lung disease (ILD). Compared to healthy controls, 48% of vaccinated patients with chronic lung diseases had reduced antibody titers to the SARS-CoV-2 vaccine antigen as early as 3-4 months after vaccination, correlating with decreased vaccine-specific memory B cells. Vaccine-specific CD4 and CD8 T cells were also significantly reduced in patients with asthma, COPD, and a subset of ILD patients compared to healthy controls. These findings reveal the complex nature of vaccine-elicited immunity in high-risk patients with chronic lung disease.

Introduction

Vaccination against severe acute respiratory syndrome coronavirus 2 (SARS-CoV-2) targeting the ancestral (Wuhan-Hu-1/2019) viral spike (S) protein has been broadly effective at limiting infection and severe coronavirus disease (COVID-19) (1-6). With respect to SARS-CoV-2 infection, both the humoral and cell mediated arms of the adaptive response are important for achieving optimal control of COVID-19 (7). As such, generating effective B cell and T cell immunity against SARS-CoV-2 remains the goal during vaccination. Much of the protection afforded by both the Pfizer/BioNTech

BNT162b2 and the Moderna mRNA-1273 mRNA vaccines is mediated by increased serum neutralizing antibodies to the viral spike protein (8). The efficacy of such neutralizing antibodies depends on their titer, avidity, and half-life (9-17). Indeed, the importance of maintained humoral immunity is evident since breakthrough cases of COVID-19 appear in otherwise healthy, vaccinated or previously infected individuals at the time of waning antibody titers (18-21). Variants such as Omicron BA.1 appear to cause less severe disease in vaccinated individuals due to cross-reactivity between the vaccine epitopes and those in the BA.1 variant, but this protection is not afforded against all Omicron variants including BA.4 and BA.5 (22-24). Whether new vaccine formulations or vaccination schemes are required to maintain lasting protection is currently an area of interest (25).

In infected individuals, the half-lives of IgG anti-spike and anti-RBD have been reported to be 103-126 and 83-116 days, respectively (26, 27). The half-life of antibodies in vaccinated individuals may be shorter, as titers are significantly decreased after 6 months (28-33). The difference in antibody half-life between infected and vaccinated individuals may depend on the half-lives of the plasma cells or differences in the memory B cells that produce them (34). Memory B cells don't participate in the immediate increase in antibody production after re-exposure to virus or vaccine, but within several days provide high levels of protective antibodies pursuant to their peri-infection conversion to plasma cells (35). The importance of memory B cells in lasting immunity to SARS-CoV-2 infection after vaccination is highlighted by findings showing that spike protein receptor binding domain (RBD) specific memory B cells survive even after anti-RBD antibodies are absent from serum (33, 36).

In addition to humoral immunity, SARS-CoV-2-specific T cells provide protection against the virus and may be particularly relevant in the case of SARS-CoV-2 variants of concern such as B.1.617.2 delta and B.1.1.529 omicron which display mutated spike proteins that can more effectively evade neutralizing antibodies (32, 37-41). The ability of the virus to escape antibody but not T cell immunity stems from the nature of the different antigenic targets on the spike protein recognized by B cells (proteins) and T cells (peptides) (7, 40, 42-45). Underlying their potential importance, the relative expansion of SARS-CoV-2 specific CD4+ and CD8+ T cells associates with COVID-19 disease severity, and T cell memory appears more durable than serum antibody titers (26, 33, 43, 46, 47). Circulating CD4+ follicular T helper cells (cTfh) are also found in the memory T cell pool. While SARS-CoV-2-specific Tfh cell are less durable than other memory T cell subsets after vaccination and may not be required for the generation of antibodies against the virus, these cells are probably important in orchestrating a productive T and B cell response to SARS-CoV-2 infection (33, 42, 48-52).

Although we have gained significant understanding about natural immunity and response to SARS-CoV-2 infection and vaccination, informative data were not generated in chronic lung disease patients, who are at highest risk of mortality and morbidity due to COVID-19 (53). Patients with lung diseases may suffer more than healthy subjects from SARS-CoV-2 infections because of underlying pulmonary limitation and/or abnormal lung immune function. Immunosuppressant drugs taken by patients with chronic lung disease can also reduce their immune responses to the SARS-CoV-2 vaccine as reported in other disease contexts (54-58). Indeed, certain

conditions and treatments may significantly reduce the ability of the patient to produce anti-SARS-CoV-2 antibody (59-66).

Individuals with chronic lung disease that fail to mount an immune response to the vaccines may be unaware of their higher risk for potentially severe “breakthrough COVID” that results from new SARS-CoV-2 variants that evade antibody neutralization. This is of particular concern as masking and social distancing have been lifted in many localities. Therefore, it is critical to understand the vaccine response in high-risk chronic lung disease patients to help identify subsets of individuals who may be at greatest risk of poor outcomes. Although the greatest at-risk patients are likely those that fail to respond appropriately to the SARS-CoV-2 vaccination, simple measurement of antibodies against the RBD does not account for heterogeneity in protective immune responses to vaccination. Therefore, to reveal whether limitations in vaccine responsiveness exist within chronic lung disease patients and to better understand the heterogeneity of responses across different chronic lung diseases, we performed deep phenotyping of the humoral and cell mediated immune response to SARS-CoV-2 vaccination in a select, investigative cohort of patients with interstitial lung disease (ILD), chronic obstructive pulmonary disease (COPD), and asthma, compared to healthy subjects.

Results

A subset of patients with chronic lung disease exhibit reduced serum antibody titers after mRNA vaccination against SARS-CoV-2.

Serum samples were used to assess SARS-CoV-2 Pfizer-BioNTech BNT162b2 and Moderna mRNA-1273 vaccine responsiveness in a cohort of 9 asthma, 8 COPD, and 15 ILD patients and 31 healthy controls (Table 1). To investigate the humoral response, we performed an in-house quantitative ELISA for serum spike RBD-specific antibodies. Serum collected between 14-231 days after the last vaccination/boost was analyzed (Fig. 1A). Asthma ($p<0.35$) and COPD ($p<0.022$) patients showed significantly reduced antibody titers 3-4 months after vaccination compared to healthy controls. 40% (6/15) of ILD patients also exhibited reduced antibody titers compared to healthy subjects. To validate these findings, serum titers from the in-house anti-RBD assay and QuantiVac ELISA (semiquantitative Spike protein IgG) were compared. As expected, samples with the highest serum anti-RBD titers, including 100% of healthy controls, were most prominent in the highest anti-spike titer bin (>350 binding antibody units (BAU)/mL) while those showing low anti-RBD titers were enriched in the lowest bin (<150 BAU/mL) (Fig. 1B). Together, these investigative findings suggest that many patients with ILD, asthma, and COPD may not achieve or maintain the same level of humoral protection after vaccination as healthy subjects.

Circulating spike-specific B cells are reduced in patients with chronic lung disease.

To investigate vaccine-specific memory B cells, we enriched PBMC for B cells and identified RBD-specific B cells using double colored RBD-tetramers (Fig. 2A) (67). We minimized contamination of non-RBD-specific B cells by eliminating B cells that bound an “irrelevant” ovalbumin-FITC protein (68, 69). Individuals with ILD ($p<0.012$) and

asthma ($p < 0.032$) had significantly fewer circulating RBD-specific B cells than healthy controls (Fig. 2B). COPD patients on average had fewer RBD-specific B cells within the circulating B cell population than observed in healthy controls (Fig. 2B). When RBD-specific B cells from all patients were compared to their RBD-specific serum antibody titers, a significant correlation ($r = 0.477$; $p < 0.002$) was observed (Fig. 2C). While the strongest positive correlation was observed in healthy subjects ($r = 0.572$), ILD patients ($r = 0.588$; $p < 0.021$) also correlated. Together, these data indicate that many individuals with chronic lung disease fail to generate a robust pool of circulating vaccine-specific B cells compared to healthy controls.

T cell response to SARS-CoV-2 vaccination is impaired in patients with chronic lung disease.

To investigate the RBD-specific CD8⁺ and CD4⁺ T cell responses in a way that was agnostic to a patient's HLA type, we used a modified approach previously described to efficiently detect spike-responsive T cells in the blood of patients with mild COVID-19 (48). Using this approach, subsets of individuals with underlying lung conditions exhibited diminished RBD-specific T cell responses compared to healthy controls (Fig. 3A, B). Specifically, CD8⁺ ($p < 0.004$) and CD4⁺ ($p < 0.023$) T cell responses in asthma patients were significantly reduced, as were CD8⁺ ($p < 0.008$) T cell responses in COPD patients. Of note, 21% of ILD patients showed limited CD8⁺ T cell responses and 42% failed to evoke a robust CD4⁺ T cell response after vaccination. Similarly, 33-37.5% of asthmatic and COPD patients had no observable CD4⁺ and CD8⁺ T cell responses to the vaccine antigen. While CD4⁺ T cell responsiveness correlated strongly ($r = 0.728$;

p<0.0001) with CD8+ T cell vaccine responses across disease cohorts, no correlation was observed between RBD-specific T cell responses and RBD-specific antibody titers (Fig. 3C-E). This suggests that an individual's humoral vaccine response can be independent of their vaccine-elicited T cell immunity and vice versa.

Vaccine-specific T cells in patients with chronic lung conditions have impaired cytokine potential.

To address T cell function, the cytokine potential in our patient cohorts was assayed by intracellular cytokine staining. While the percentages of bulk CD8+ T cells that were IFN- γ competent were significantly (p<0.012) elevated among vaccinated COPD patients compared to healthy controls, the percentage of such cells in asthmatic and ILD patients were not significantly different (Fig. 4A). On the other hand, the percentage of bulk CD8 T cells from asthmatic patients that could produce IL-2 were significantly (p<0.014) reduced relative to healthy controls (Fig. 4A). While this suggests some heterogeneity exists in the cytokine profiles of patients with chronic lung disease, for the most part, bulk T cell function appears similar across disease groups. Even less heterogeneity was observed in the cytokine potential of CD4+ T cells across disease groups and healthy patients (Fig. 4B).

In contrast to bulk T cell populations, heterogeneity in cytokine potential was observed in vaccine-responsive T cell populations. In these experiments vaccine responsive T cells were defined by loss of CPD, indicative of cells that had divided in response to RBD antigen. In patients with chronic lung disease, the percentage of RBD responsive CD8+ T cells from asthma and COPD patients that could produce IFN- γ

and/or IL-2 was significantly reduced compared to similar T cells obtained from healthy subjects (Fig. 4C, D). A similar finding was observed in RBD responsive CD4⁺ T cells from asthma and COPD patients (Fig. 4E, F). Of note, while asthma and COPD patients showed more homogeneity in their T cell functionality, a subset of patients with ILD also exhibited decreased IFN-gamma and IL-2 within RBD-specific CD4⁺ and CD8⁺ T cells compared to healthy controls. This suggests that at least some patients within each disease cohort exhibit reduced T cell functionality to the vaccine.

When looking at total T cell responsiveness, patients mounting a productive CD4⁺ T cell response generally exhibited a productive CD8⁺ T cell response ($r=0.703$; $p<0.0001$) (Fig. 4G). To understand if T cell function similarly tracked with humoral immunity after vaccination, we compared IFN-gamma⁺ RBD-specific T cells in each patient to their serum anti-RBD titers. In all patient groups, no significant correlation was observed (Fig. 4H, I). Together with serum antibody and memory B cell data, these findings indicate that the SARS-CoV-2 vaccine may differentially promote T cell and humoral immunity in some ILD, asthma, and COPD patients.

SARS-CoV-2-specific Tfh cells exhibit decreased cytokine potential in patients with chronic lung conditions compared to healthy controls.

Given Tfh cells are important in driving humoral vaccine responses, we next investigated the Tfh response in vaccinated patients with pulmonary disease. The percentage of circulating CXCR5⁺ CD4⁺ Tfh (cTfh) cells among the total CD4⁺ T cell pool was decreased across all disease cohorts reaching significance within asthma ($p<0.011$) and COPD ($p<0.006$) patients (Fig. 5A). While IL-2 production remained

comparable to healthy controls, the relative percentage of IFN- γ expressing cTfh cells was increased across all chronic lung disease cohorts (Fig. 5B). Increased IFN- γ production was most evident in COPD ($p < 0.027$) patients, however, at least some ILD and asthma patients also exhibited increased interferon expression within bulk cTfh cells relative to healthy controls. Despite the increased IFN- γ production observed in bulk cTfh cells in patients with chronic lung disease, RBD-responsive (CPD-Io) cTfh on average exhibited decreased IFN- γ production compared to vaccinated, healthy controls. In fact, 21% of ILD patients, 44% of asthma patients, and 25% of COPD patients in this investigative cohort lacked IFN- γ -expressing RBD-responsive Tfh cells above background (Fig. 5C). This mirrors the decreased functionality of vaccine responsive T cells within non-Tfh cell populations.

Discussion

This study highlights the significant heterogeneity that exists in the vaccine response to SARS-CoV-2 in individuals with ILD, COPD and asthma compared to healthy controls. In our assessment of vaccine-induced antibody titers, memory B cell subsets, and T cells in patients with asthma, COPD, and ILD, we found that 48.3% of patients with chronic lung disease exhibited serum antibody titers to the vaccine antigen below the expected titers observed in healthy controls 3-4 months after the last vaccine administration. This correlated with decreased RBD-specific circulating memory B cells. In addition to impaired humoral hallmarks, most patients with asthma and COPD and a subset of patients with ILD had reduced circulating RBD-responsive CD4⁺ T cells, CD8⁺ T cells, and Tfh cells. These vaccine-specific T cell populations also exhibited

decreased cytokine potential compared to healthy controls. Of note, while some individuals lacking antibody and memory B cell production after vaccination also exhibited reduced T cell immunity, many patients had evidence of defects in only one arm of the adaptive response to SARS-CoV-2 vaccination. This highlights the considerable variability in vaccine responses among patients with chronic lung disease and illustrates the importance of deep immunophenotyping of high-risk patients to determine their overall immunity to SARS-CoV-2 after vaccination.

Most of the available data regarding the safety, efficacy, and durability of mRNA vaccines against SARS-CoV-2 has been generated from healthy vaccinated cohorts (5, 20, 29, 33, 70-73). In these initial studies, nearly all healthy vaccine recipients developed binding and neutralizing antibodies. However, this level of vaccine responsiveness does not appear to always extend to individuals with chronic lung disease (59, 74). While not designed or powered to address safety, efficacy, or durability of the vaccine response in patients with chronic lung disease, the current data suggest that what we understand regarding vaccination in healthy subjects may not be directly applicable to patients with chronic lung disease. Further, the data also show that vaccine responses may differ depending on the type of underlying lung condition. For example, as a group, individuals with COPD and asthma were more likely to exhibit impaired antibody and T cell responses than ILD patients, who instead exhibited greater heterogeneity in their mRNA vaccine response. Factors that separate responders from non-responders within a particular disease group may reflect distinct disease-associated endotypes within COPD, asthma, and ILD, including the possibility that subsets of each of these lung diseases are associated with broadly abnormal immunity,

a concept that finds support in previous studies (75). Understanding how the intrinsic nature of each pulmonary disease impacts B cell and T cell immunity in patients with chronic lung disease is particularly important as such patients are more at risk for “breakthrough COVID-19” driven by emerging SARS-CoV-2 variants of concern.

One of the key caveats in the current study is the lack of a longitudinal assessment within these different disease cohorts. We know from healthy controls that each arm of the immune system varies over time after vaccination. For example, while anti-RBD antibody titers and cTfh numbers wane six months after vaccination, vaccine-specific T cell responses and memory B cell responses remain relatively stable over that same period in healthy subjects (33, 76). Whether similar kinetics occur in individuals with chronic lung disease remains unknown. The investigative data provided herein suggest that a large percentage of individuals with chronic lung disease fail to mount productive humoral and cell mediated immunity during the first and second dosing of the vaccine. What remains unclear is whether such non-responders remain impaired after subsequent vaccination attempts. While there is evidence that a third booster can be effective in providing some protection against SARS-CoV-2 in other high-risk populations (62, 77-79), some seronegative individuals who did not respond to the first two doses of vaccine also fail to respond to the third boost (80). How boosting can benefit non-responders becomes even more complicated as natural exposures to the virus and its variants become more frequent. Thus, the benefit of multiple boosts or more frequent boosting in subsets of patients with asthma, ILD, and COPD that show inadequate vaccine responsiveness should be explored.

In conclusion, vaccination against SARS-CoV-2 has had a significant impact on our ability to control the current COVID-19 pandemic. However, much of what we understand comes from data collected from clinical trials comprised of healthy individuals. Our study suggests that efficacy of the vaccine and vaccine-induced immunity in healthy individuals should not be uniformly extrapolated to individuals with chronic lung disease. This finding has clinical relevance, as these individuals are considered at high-risk for contracting severe COVID-19. Patients with COPD, for example, have increased odds of hospitalization, intensive care unit admission, and mortality compared to healthy controls if exposed to SARS-CoV-2 (53). Given the relatively high percentage of patients with chronic lung disease showing some form of impaired vaccine responsiveness and the high degree of heterogeneity in the responses observed across individuals with ILD, asthma, and COPD, chronic lung disease patients may benefit from personalized vaccination schemes and deeper assessment of immune responses to ensure optimal protection in this vulnerable population.

Methods

Study participants: Chronic lung disease and healthy control blood samples were collected as part of two institutional IRB-approved protocols under which subjects provided informed consent: 1) a prospective study of response to SARS-CoV-2 vaccinations that recruited from NJH clinics and 2) the National Jewish Health BioBank that recruits patients undergoing normal clinical laboratory testing or from a healthy donor pool. The samples were stored and maintained as part of the National Jewish Health (NJH) Biobank. Patient information regarding vaccine status, medicine, and

infection status was collected at time of sample collection or as part of their normal medical record.

Serum and peripheral blood mononuclear cell sample preparation: Blood was collected from multiple 10 mL blood draws into EDTA tubes. Serum was processed after density gradient centrifugation and PBMC –post red blood cell lysis– were resuspended in 10% DMSO + 90% FBS in cryovials prior to storage in liquid nitrogen.

SARS-CoV-2 receptor binding domain generation: SARS-CoV-2 spike receptor binding domain (aa319 to aa541) with C-terminal 6* histidine tag was expressed in 293F cell as described previously (81). The RBD protein was purified with nickel column and the eluted protein was further purified by size-exclusion column to collect monomer sized RBD.

RBD-tetramer generation: SARS-CoV-2 spike receptor binding domain (aa319 to aa541) with C-terminal histidine tag and Avitag was expressed and purified in the same way above. The RBD was biotinylated by BirA enzyme. The biotinylated RBD was conjugated to the streptavidin labeled with different fluorescent dyes.

Enzyme-linked immunosorbent assay (ELISA) for RBD serum antibody: Twenty µg/ml 6*-histidine tagged RBD was used for coating ELISA plate. After blocking, human serum at different dilutions was incubated on the plates. The bound IgG was detected

with goat anti-human IgG, Fcy fragment specific conjugated with alkaline phosphatase (Jackson ImmunoResearch #109-055-008). Bamlanivimab was used as standard for converting ELISA O.D. value to serum antibody amount (82).

Staining of RBD specific B cell subsets by flow cytometry: Human PBMC samples were obtained from Biobank at National Jewish Health. Cells were stained with 2 µg/ml double colored RBD tetramers (conjugated with BV421 and PE respectively), human Fc block and FITC-OVA first on ice for 30 minutes. CD19 APCcy7, IgD BV510, dump (CD4, CD8, CD14, CD16) PerCP antibodies were then added for staining. Cells were washed and stained with Ghost UV450 dye and fixed with 1% paraformaldehyde for flow cytometry analysis.

PBMC cultures and antigen-specific T cell stimulation: PBMCs were thawed and resuspended in complete RPMI-1640 (10% FBS, 10mM HEPES, 50uM 2-beta mercaptoethanol, 2mM L-glutamine, and 1% penicillin and streptomycin). After counting, PBMC were stained with 5uM cell proliferation dye eFluor 670 (CPD; #65-0840, Thermo Fisher). CPD labeled cells were plated at 2×10^5 PBMC per well in cRPMI + 2ng/mL (10U/mL) of recombinant human IL-2 (Biolegend). For RBD stimulation, wells were incubated with 2.5ug/mL of RBD or media alone. For cytokine analysis, cultures were left unstimulated or were stimulated with 50ng/mL phorbol 12-myristate 13-acetate (PMA; Sigma) and 1ug/mL of ionomycin (Sigma-Aldrich) 4 hours before harvest. All wells were provided 10ug/mL of brefeldin A (Sigma-Aldrich) and 1x dilution of monensin (GolgiStop; #554724 Becton Dickinson) to prevent cytokine secretion.

344

345 **Staining of T cell subsets by flow cytometry:** PBMC were labeled with LIVE/DEAD
346 fixable violet dye (L34955; Invitrogen), followed by surface antibody staining (CD4,
347 Clone:RPA-T4; CD8, Clone:SK1; CD3, Clone:OKT3, CXCR5, clone:J252D4,
348 Biolegend). After surface staining, cells were fixed and permeabilized using
349 FOXP3/Transcription factor staining buffer set (#00-5523-00, Invitrogen) per
350 manufacturer's instructions. Fixed cells were stained for intracellular cytokines anti-IL-2
351 (Clone:MQ1-17412, Biolegend) and anti-interferon gamma (Clone:4S.B3, Biolegend).
352 Data were collected by flow cytometric analysis on a LSR II (BD Biosciences) cytometer
353 and analyzed using FlowJo (BD Bioscience).

354

355 **Statistical Analysis:** All comparisons were made using paired and unpaired t tests with
356 Prism 9 (GraphPad). Where possible p values and r correlations are provided directly in
357 figures. P values in grouped graphs represent unpaired, two-tailed T test.

358

359 **References:**

- 360 1. Dispinseri S, Secchi M, Pirillo MF, Tolazzi M, Borghi M, Brigatti C, et al.
361 Neutralizing antibody responses to SARS-CoV-2 in symptomatic COVID-19 is
362 persistent and critical for survival. *Nat Commun.* 2021;12(1):2670.
- 363 2. Lau EHY, Tsang OTY, Hui DSC, Kwan MYW, Chan WH, Chiu SS, et al.
364 Neutralizing antibody titres in SARS-CoV-2 infections. *Nat Commun.*
365 2021;12(1):63.
- 366 3. Thomas SJ, Moreira ED, Jr., Kitchin N, Absalon J, Gurtman A, Lockhart S, et al.
367 Safety and Efficacy of the BNT162b2 mRNA Covid-19 Vaccine through 6 Months.
368 *N Engl J Med.* 2021;385(19):1761-73.
- 369 4. Polack FP, Thomas SJ, Kitchin N, Absalon J, Gurtman A, Lockhart S, et al. Safety
370 and Efficacy of the BNT162b2 mRNA Covid-19 Vaccine. *N Engl J Med.*
371 2020;383(27):2603-15.

5. El Sahly HM, Baden LR, Essink B, Doblecki-Lewis S, Martin JM, Anderson EJ, et al. Efficacy of the mRNA-1273 SARS-CoV-2 Vaccine at Completion of Blinded Phase. *N Engl J Med*. 2021;385(19):1774-85.
6. Baden LR, El Sahly HM, Essink B, Kotloff K, Frey S, Novak R, et al. Efficacy and Safety of the mRNA-1273 SARS-CoV-2 Vaccine. *N Engl J Med*. 2021;384(5):403-16.
7. Sette A, and Crotty S. Adaptive immunity to SARS-CoV-2 and COVID-19. *Cell*. 2021;184(4):861-80.
8. Mumoli N, Vitale J, and Mazzone A. Clinical immunity in discharged medical patients with COVID-19. *Int J Infect Dis*. 2020;99:229-30.
9. Earle KA, Ambrosino DM, Fiore-Gartland A, Goldblatt D, Gilbert PB, Siber GR, et al. Evidence for antibody as a protective correlate for COVID-19 vaccines. *Vaccine*. 2021;39(32):4423-8.
10. Rogliani P, Chetta A, Cazzola M, and Calzetta L. SARS-CoV-2 Neutralizing Antibodies: A Network Meta-Analysis across Vaccines. *Vaccines (Basel)*. 2021;9(3).
11. Terpos E, Trougakos IP, Karalis V, Ntanasios-Stathopoulos I, Sklirou AD, Bagratuni T, et al. Comparison of neutralizing antibody responses against SARS-CoV-2 in healthy volunteers who received the BNT162b2 mRNA or the AZD1222 vaccine: Should the second AZD1222 vaccine dose be given earlier? *Am J Hematol*. 2021;96(9):E321-E4.
12. Bian L, Gao F, Zhang J, He Q, Mao Q, Xu M, et al. Effects of SARS-CoV-2 variants on vaccine efficacy and response strategies. *Expert Rev Vaccines*. 2021;20(4):365-73.
13. Diamond M, Chen R, Xie X, Case J, Zhang X, VanBlargan L, et al. SARS-CoV-2 variants show resistance to neutralization by many monoclonal and serum-derived polyclonal antibodies. *Res Sq*. 2021.
14. Jangra S, Ye C, Rathnasinghe R, Stadlbauer D, Personalized Virology Initiative study g, Krammer F, et al. SARS-CoV-2 spike E484K mutation reduces antibody neutralisation. *Lancet Microbe*. 2021;2(7):e283-e4.
15. Pegu A, O'Connell SE, Schmidt SD, O'Dell S, Talana CA, Lai L, et al. Durability of mRNA-1273 vaccine-induced antibodies against SARS-CoV-2 variants. *Science*. 2021;373(6561):1372-7.
16. Planas D, Bruel T, Grzelak L, Guivel-Benhassine F, Staropoli I, Porrot F, et al. Sensitivity of infectious SARS-CoV-2 B.1.1.7 and B.1.351 variants to neutralizing antibodies. *Nat Med*. 2021;27(5):917-24.
17. Soriano V, and Fernandez-Montero JV. New SARS-CoV-2 Variants Challenge Vaccines Protection. *AIDS Rev*. 2021;23(1):57-8.
18. Tillett RL, Sevinsky JR, Hartley PD, Kerwin H, Crawford N, Gorzalski A, et al. Genomic evidence for reinfection with SARS-CoV-2: a case study. *Lancet Infect Dis*. 2021;21(1):52-8.
19. Lee JS, Kim SY, Kim TS, Hong KH, Ryoo NH, Lee J, et al. Evidence of Severe Acute Respiratory Syndrome Coronavirus 2 Reinfection After Recovery from Mild Coronavirus Disease 2019. *Clin Infect Dis*. 2021;73(9):e3002-e8.

20. Widge AT, Rouphael NG, Jackson LA, Anderson EJ, Roberts PC, Makhene M, et al. Durability of Responses after SARS-CoV-2 mRNA-1273 Vaccination. *N Engl J Med.* 2021;384(1):80-2.
21. Sabino EC, Buss LF, Carvalho MPS, Prete CA, Jr., Crispim MAE, Fraiji NA, et al. Resurgence of COVID-19 in Manaus, Brazil, despite high seroprevalence. *Lancet.* 2021;397(10273):452-5.
22. Quandt J, Muik A, Salisch N, Lui BG, Lutz S, Kruger K, et al. Omicron BA.1 breakthrough infection drives cross-variant neutralization and memory B cell formation against conserved epitopes. *Sci Immunol.* 2022;7(75):eabq2427.
23. Kaku CI, Bergeron AJ, Ahlm C, Normark J, Sakharkar M, Forsell MNE, et al. Recall of preexisting cross-reactive B cell memory after Omicron BA.1 breakthrough infection. *Sci Immunol.* 2022;7(73):eabq3511.
24. Muik A, Lui BG, Bacher M, Wallisch AK, Toker A, Finlayson A, et al. Omicron BA.2 breakthrough infection enhances cross-neutralization of BA.2.12.1 and BA.4/BA.5. *Sci Immunol.* 2022:eade2283.
25. van Zelm MC. Immune memory to SARS-CoV-2 Omicron BA.1 breakthrough infections: To change the vaccine or not? *Sci Immunol.* 2022;7(74):eabq5901.
26. Dan JM, Mateus J, Kato Y, Hastie KM, Yu ED, Faliti CE, et al. Immunological memory to SARS-CoV-2 assessed for up to 8 months after infection. *Science.* 2021;371(6529).
27. Cohen KW, Linderman SL, Moodie Z, Czartoski J, Lai L, Mantus G, et al. Longitudinal analysis shows durable and broad immune memory after SARS-CoV-2 infection with persisting antibody responses and memory B and T cells. *Cell Rep Med.* 2021;2(7):100354.
28. Doria-Rose N, Suthar MS, Makowski M, O'Connell S, McDermott AB, Flach B, et al. Antibody Persistence through 6 Months after the Second Dose of mRNA-1273 Vaccine for Covid-19. *N Engl J Med.* 2021;384(23):2259-61.
29. Wei J, Pouwels KB, Stoesser N, Matthews PC, Diamond I, Studley R, et al. Antibody responses and correlates of protection in the general population after two doses of the ChAdOx1 or BNT162b2 vaccines. *Nat Med.* 2022.
30. Levin EG, Lustig Y, Cohen C, Fluss R, Indenbaum V, Amit S, et al. Waning Immune Humoral Response to BNT162b2 Covid-19 Vaccine over 6 Months. *N Engl J Med.* 2021;385(24):e84.
31. Favresse J, Bayart JL, Mullier F, Elsen M, Eucher C, Van Eeckhoudt S, et al. Antibody titres decline 3-month post-vaccination with BNT162b2. *Emerg Microbes Infect.* 2021;10(1):1495-8.
32. Liu H, Wei P, Zhang Q, Aviszus K, Linderberger J, Yang J, et al. The Lambda variant of SARS-CoV-2 has a better chance than the Delta variant to escape vaccines. *bioRxiv.* 2021.
33. Goel RR, Painter MM, Apostolidis SA, Mathew D, Meng W, Rosenfeld AM, et al. mRNA vaccines induce durable immune memory to SARS-CoV-2 and variants of concern. *Science.* 2021;374(6572):abm0829.
34. Pape KA, Dileepan T, Kabage AJ, Kozysa D, Batres R, Evert C, et al. High-affinity memory B cells induced by SARS-CoV-2 infection produce more plasmablasts and atypical memory B cells than those primed by mRNA vaccines. *Cell Rep.* 2021;37(2):109823.

35. Nutt SL, Hodgkin PD, Tarlinton DM, and Corcoran LM. The generation of antibody-secreting plasma cells. *Nat Rev Immunol*. 2015;15(3):160-71.
36. Winklmeier S, Eisenhut K, Taskin D, Rubsamen H, Gerhards R, Schneider C, et al. Persistence of functional memory B cells recognizing SARS-CoV-2 variants despite loss of specific IgG. *iScience*. 2022;25(1):103659.
37. Annavajhala MK, Mohri H, Wang P, Nair M, Zucker JE, Sheng Z, et al. Emergence and expansion of SARS-CoV-2 B.1.526 after identification in New York. *Nature*. 2021;597(7878):703-8.
38. Viana R, Moyo S, Amoako DG, Tegally H, Scheepers C, Althaus CL, et al. Rapid epidemic expansion of the SARS-CoV-2 Omicron variant in southern Africa. *Nature*. 2022.
39. Tegally H, Wilkinson E, Giovanetti M, Iranzadeh A, Fonseca V, Giandhari J, et al. Detection of a SARS-CoV-2 variant of concern in South Africa. *Nature*. 2021;592(7854):438-43.
40. Geers D, Shamier MC, Bogers S, den Hartog G, Gommers L, Nieuwkoop NN, et al. SARS-CoV-2 variants of concern partially escape humoral but not T-cell responses in COVID-19 convalescent donors and vaccinees. *Sci Immunol*. 2021;6(59).
41. Tarke A, Coelho CH, Zhang Z, Dan JM, Yu ED, Methot N, et al. SARS-CoV-2 vaccination induces immunological T cell memory able to cross-recognize variants from Alpha to Omicron. *Cell*. 2022;185(5):847-59 e11.
42. Rydyznski Moderbacher C, Ramirez SI, Dan JM, Grifoni A, Hastie KM, Weiskopf D, et al. Antigen-Specific Adaptive Immunity to SARS-CoV-2 in Acute COVID-19 and Associations with Age and Disease Severity. *Cell*. 2020;183(4):996-1012 e19.
43. Tan AT, Linster M, Tan CW, Le Bert N, Chia WN, Kunasegaran K, et al. Early induction of functional SARS-CoV-2-specific T cells associates with rapid viral clearance and mild disease in COVID-19 patients. *Cell Rep*. 2021;34(6):108728.
44. Tarke A, Sidney J, Methot N, Yu ED, Zhang Y, Dan JM, et al. Impact of SARS-CoV-2 variants on the total CD4(+) and CD8(+) T cell reactivity in infected or vaccinated individuals. *Cell Rep Med*. 2021;2(7):100355.
45. Goel RR, Painter MM, Apostolidis SA, Mathew D, Meng W, Rosenfeld AM, et al. mRNA Vaccination Induces Durable Immune Memory to SARS-CoV-2 with Continued Evolution to Variants of Concern. *bioRxiv*. 2021.
46. Braun J, Loyal L, Frentsch M, Wendisch D, Georg P, Kurth F, et al. SARS-CoV-2-reactive T cells in healthy donors and patients with COVID-19. *Nature*. 2020;587(7833):270-4.
47. Grifoni A, Weiskopf D, Ramirez SI, Mateus J, Dan JM, Moderbacher CR, et al. Targets of T Cell Responses to SARS-CoV-2 Coronavirus in Humans with COVID-19 Disease and Unexposed Individuals. *Cell*. 2020;181(7):1489-501 e15.
48. Rodda LB, Netland J, Shehata L, Pruner KB, Morawski PA, Thouvenel CD, et al. Functional SARS-CoV-2-Specific Immune Memory Persists after Mild COVID-19. *Cell*. 2021;184(1):169-83 e17.
49. Juno JA, Tan HX, Lee WS, Reynaldi A, Kelly HG, Wragg K, et al. Humoral and circulating follicular helper T cell responses in recovered patients with COVID-19. *Nat Med*. 2020;26(9):1428-34.

50. Lederer K, Castano D, Gomez Atria D, Oguin TH, 3rd, Wang S, Manzoni TB, et al. SARS-CoV-2 mRNA Vaccines Foster Potent Antigen-Specific Germinal Center Responses Associated with Neutralizing Antibody Generation. *Immunity*. 2020;53(6):1281-95 e5.
51. Painter MM, Mathew D, Goel RR, Apostolidis SA, Pattekar A, Kuthuru O, et al. Rapid induction of antigen-specific CD4(+) T cells is associated with coordinated humoral and cellular immunity to SARS-CoV-2 mRNA vaccination. *Immunity*. 2021;54(9):2133-42 e3.
52. Chen JS, Chow RD, Song E, Mao T, Israelow B, Kamath K, et al. High-affinity, neutralizing antibodies to SARS-CoV-2 can be made without T follicular helper cells. *Sci Immunol*. 2022;7(68):eabl5652.
53. Gerayeli FV, Milne S, Cheung C, Li X, Yang CWT, Tam A, et al. COPD and the risk of poor outcomes in COVID-19: A systematic review and meta-analysis. *EClinicalMedicine*. 2021;33:100789.
54. Friedman MA, and Winthrop KL. Second COVID-19 infection in a patient with granulomatosis with polyangiitis on rituximab. *Ann Rheum Dis*. 2021.
55. Grupper A, Rabinowich L, Schwartz D, Schwartz IF, Ben-Yehoyada M, Shashar M, et al. Reduced humoral response to mRNA SARS-CoV-2 BNT162b2 vaccine in kidney transplant recipients without prior exposure to the virus. *Am J Transplant*. 2021;21(8):2719-26.
56. Grupper A, Katchman E, Ben-Yehoyada M, Rabinowich L, Schwartz D, Schwartz IF, et al. Kidney transplant recipients vaccinated before transplantation maintain superior humoral response to SARS-CoV-2 vaccine. *Clin Transplant*. 2021;35(12):e14478.
57. Pitzalis M, Idda ML, Lodde V, Loizedda A, Lobina M, Zoledziwska M, et al. Effect of Different Disease-Modifying Therapies on Humoral Response to BNT162b2 Vaccine in Sardinian Multiple Sclerosis Patients. *Front Immunol*. 2021;12:781843.
58. Achtnichts L, Jakopp B, Oberle M, Nedeltchev K, Fux CA, Sellner J, et al. Humoral Immune Response after the Third SARS-CoV-2 mRNA Vaccination in CD20 Depleted People with Multiple Sclerosis. *Vaccines (Basel)*. 2021;9(12).
59. Liao SY, Gerber AN, Zelarney P, Make B, and Wechsler ME. Impaired SARS-CoV-2 mRNA Vaccine Antibody Response in Chronic Medical Conditions: A Real-World Analysis. *Chest*. 2022.
60. Benotmane I, Gautier-Vargas G, Cognard N, Olagne J, Heibel F, Braun-Parvez L, et al. Weak anti-SARS-CoV-2 antibody response after the first injection of an mRNA COVID-19 vaccine in kidney transplant recipients. *Kidney Int*. 2021;99(6):1487-9.
61. Lopez Bernal J, Andrews N, Gower C, Robertson C, Stowe J, Tessier E, et al. Effectiveness of the Pfizer-BioNTech and Oxford-AstraZeneca vaccines on covid-19 related symptoms, hospital admissions, and mortality in older adults in England: test negative case-control study. *BMJ*. 2021;373:n1088.
62. Shroff RT, Chalasani P, Wei R, Pennington D, Quirk G, Schoenle MV, et al. Immune responses to two and three doses of the BNT162b2 mRNA vaccine in adults with solid tumors. *Nat Med*. 2021;27(11):2002-11.
63. Teo SP. Review of COVID-19 Vaccines and Their Evidence in Older Adults. *Ann Geriatr Med Res*. 2021;25(1):4-9.

64. Watanabe M, Balena A, Tuccinardi D, Tozzi R, Risi R, Masi D, et al. Central obesity, smoking habit, and hypertension are associated with lower antibody titres in response to COVID-19 mRNA vaccine. *Diabetes Metab Res Rev.* 2022;38(1):e3465.
65. Galmiche S, Luong Nguyen LB, Tartour E, de Lamballerie X, Wittkop L, Loubet P, et al. Immunological and clinical efficacy of COVID-19 vaccines in immunocompromised populations: a systematic review. *Clin Microbiol Infect.* 2022;28(2):163-77.
66. Yi SG, Knight RJ, Graviss EA, Moore LW, Nguyen DT, Ghobrial RM, et al. Kidney Transplant Recipients Rarely Show an Early Antibody Response Following the First COVID-19 Vaccine Administration. *Transplantation.* 2021;105(7):e72-e3.
67. Newman J, Rice JS, Wang C, Harris SL, and Diamond B. Identification of an antigen-specific B cell population. *J Immunol Methods.* 2003;272(1-2):177-87.
68. Ouisse LH, Gautreau-Rolland L, Devilder MC, Osborn M, Moyon M, Visentin J, et al. Antigen-specific single B cell sorting and expression-cloning from immunoglobulin humanized rats: a rapid and versatile method for the generation of high affinity and discriminative human monoclonal antibodies. *BMC Biotechnol.* 2017;17(1):3.
69. Gaebler C, Wang Z, Lorenzi JCC, Muecksch F, Finkin S, Tokuyama M, et al. Evolution of antibody immunity to SARS-CoV-2. *Nature.* 2021;591(7851):639-44.
70. Anderson EJ, Rouphael NG, Widge AT, Jackson LA, Roberts PC, Makhene M, et al. Safety and Immunogenicity of SARS-CoV-2 mRNA-1273 Vaccine in Older Adults. *N Engl J Med.* 2020;383(25):2427-38.
71. Jackson LA, Roberts PC, and Graham BS. A SARS-CoV-2 mRNA Vaccine - Preliminary Report. Reply. *N Engl J Med.* 2020;383(12):1191-2.
72. Jackson LA, Anderson EJ, Rouphael NG, Roberts PC, Makhene M, Coler RN, et al. An mRNA Vaccine against SARS-CoV-2 - Preliminary Report. *N Engl J Med.* 2020;383(20):1920-31.
73. Walsh EE, Frenck RW, Jr., Falsey AR, Kitchin N, Absalon J, Gurtman A, et al. Safety and Immunogenicity of Two RNA-Based Covid-19 Vaccine Candidates. *N Engl J Med.* 2020;383(25):2439-50.
74. Mitsunaga T, Ohtaki Y, Seki Y, Yoshioka M, Mori H, Suzuka M, et al. The evaluation of factors affecting antibody response after administration of the BNT162b2 vaccine: a prospective study in Japan. *PeerJ.* 2021;9:e12316.
75. Ritchie AI, Farne HA, Singanayagam A, Jackson DJ, Mallia P, and Johnston SL. Pathogenesis of Viral Infection in Exacerbations of Airway Disease. *Ann Am Thorac Soc.* 2015;12 Suppl 2:S115-32.
76. Guerrero G, Picozza M, D'Orso S, Placido R, Pirronello M, Verdiani A, et al. BNT162b2 vaccination induces durable SARS-CoV-2-specific T cells with a stem cell memory phenotype. *Sci Immunol.* 2021;6(66):eabl5344.
77. Charmetant X, Espi M, Benotmane I, Barateau V, Heibel F, Buron F, et al. Infection or a third dose of mRNA vaccine elicits neutralizing antibody responses against SARS-CoV-2 in kidney transplant recipients. *Sci Transl Med.* 2022;14(636):eabl6141.

78. Lim SH, Stuart B, Joseph-Pietras D, Johnson M, Campbell N, Kelly A, et al. Immune responses against SARS-CoV-2 variants after two and three doses of vaccine in B-cell malignancies: UK PROSECO study. *Nat Cancer*. 2022.
79. Hall VG, Ferreira VH, Ku T, Ierullo M, Majchrzak-Kita B, Chaparro C, et al. Randomized Trial of a Third Dose of mRNA-1273 Vaccine in Transplant Recipients. *N Engl J Med*. 2021;385(13):1244-6.
80. Re D, Seitz-Polski B, Brglez V, Carles M, Graca D, Benzaken S, et al. Humoral and cellular responses after a third dose of SARS-CoV-2 BNT162b2 vaccine in patients with lymphoid malignancies. *Nat Commun*. 2022;13(1):864.
81. Liu H, Zhang Q, Wei P, Chen Z, Aviszus K, Yang J, et al. The basis of a more contagious 501Y.V1 variant of SARS-CoV-2. *Cell Research*. 2021;31(6):720-2.
82. Jones BE, Brown-Augsburger PL, Corbett KS, Westendorf K, Davies J, Cujec TP, et al. The neutralizing antibody, LY-CoV555, protects against SARS-CoV-2 infection in nonhuman primates. *Sci Transl Med*. 2021;13(593).

Acknowledgments: We thank John Yang management and distribution of PBMC and serum samples from NJH Biobank and the Jin Hua foundation for their support.

Author contributions: Concept and design: all authors. Acquisition and interpretation of data: H.L., K.A., P.Z., S.-Y. L., P.M., R.L.R. Drafting of the manuscript: H.L., P.M., R.L.R. Critical revision of the manuscript for important intellectual content: All authors. Statistical analysis: R.L.R., H.L., S.-Y.L., P.Z. All authors had full access to all the data in the study and take responsibility for the integrity of the data and accuracy of the data analysis.

Competing interests: Authors report no competing financial interests.

Funding Statement: This work was supported by the following funding: National Institutes of Health Grants: R.L.R. (AI156901), P.M. (AI18785), H.L. (GM135421) and

M.E.W. (NJH Dept. of Medicine MOOR microgrant award and the Jin Hua Foundation),
A.N.G. and H.L. (Funded by NJH Div. of Pulmonary, Critical Care and Sleep Medicine)

Material and Correspondence: Correspondence and material requests should be
directed to R. Lee Reinhardt, Haolin Liu, Michael Wechsler, and Phillipa Marrack.

Tables:

Table 1: Investigative cohort of SARS-CoV-2 vaccinated patients with chronic lung disease

	Asthma 9 subjects	COPD 8 subjects	ILD 15 subjects	Healthy Controls 31 subjects	Total 63 subjects
Age at Sample - average (range)	58 (43-71)	64 (57-73)	62 (47-73)	50 (25-72)	56 (25-73)
Female - number (%)	5 (56%)	5 (62%)	9 (60%)	14 (45%)	33 (52%)
Male - number (%)	4 (44%)	3 (38%)	6 (40%)	17 (55%)	30 (48%)
Days from last vaccination to sample - average (range)	117 (87-156)	138 (112-163)	122 (84-144)	121 (14-231)	123 (14-231)
Immunosuppressants (%)	6 (66%)	4 (50%)	9 (60%)	0 (0%)	19 (30%)
FEV-1 Pre-Bronch % Predicted	76 (49-106) n=8	63 (27-98) n=7	77 (33-109) n=15	n/a	n/a
FVC Pre-Bronch % Predicted	78 (61-99) n=8	81 (55-111) n=7	75 (34-97) n=15	n/a	n/a
FEV1/FVC Pre-Bronch % Predicted	94 (78-109) n=8	75 (48-101) n=7	101 (88-115) n=15	n/a	n/a
Meets GINA 4 criteria	3				
Meets GINA 5 criteria	3				

Figures:

Figure 1

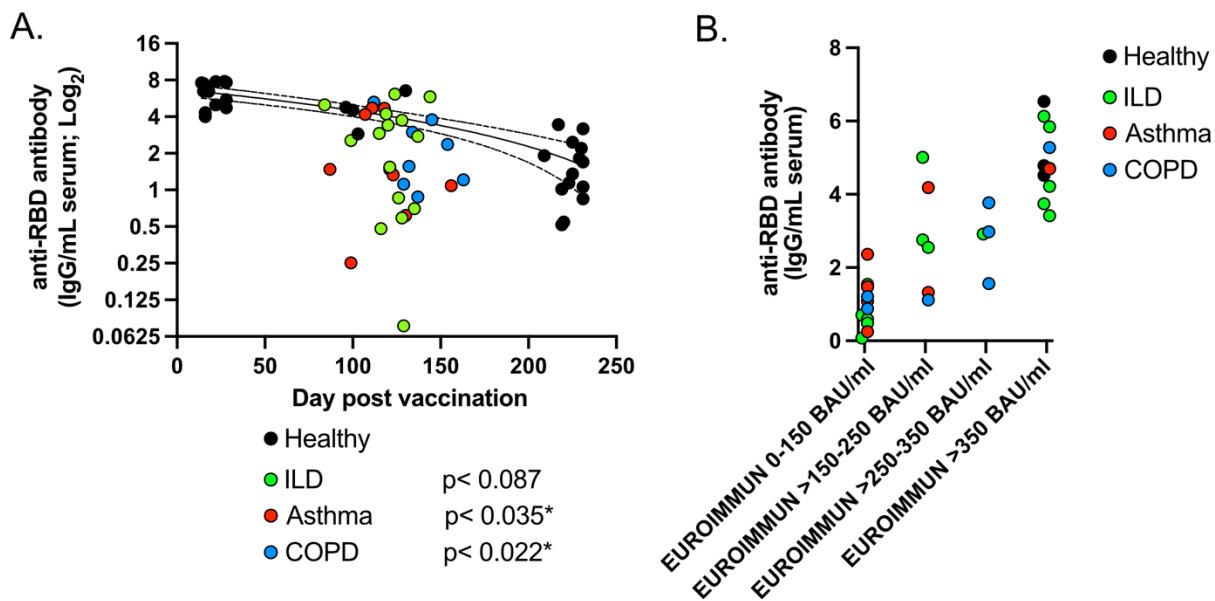
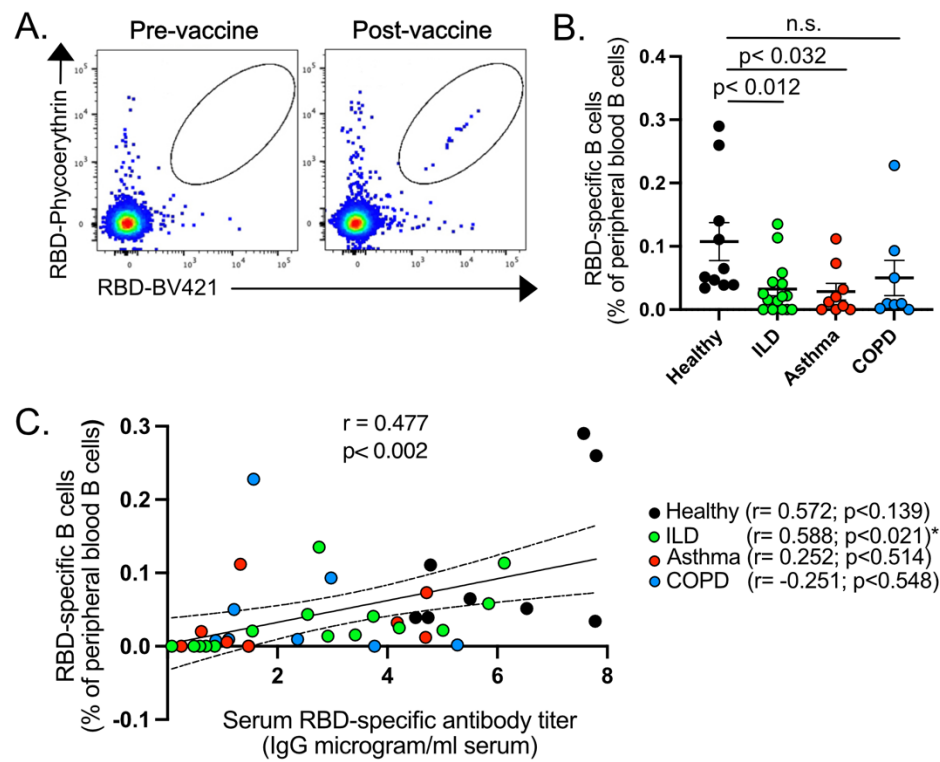
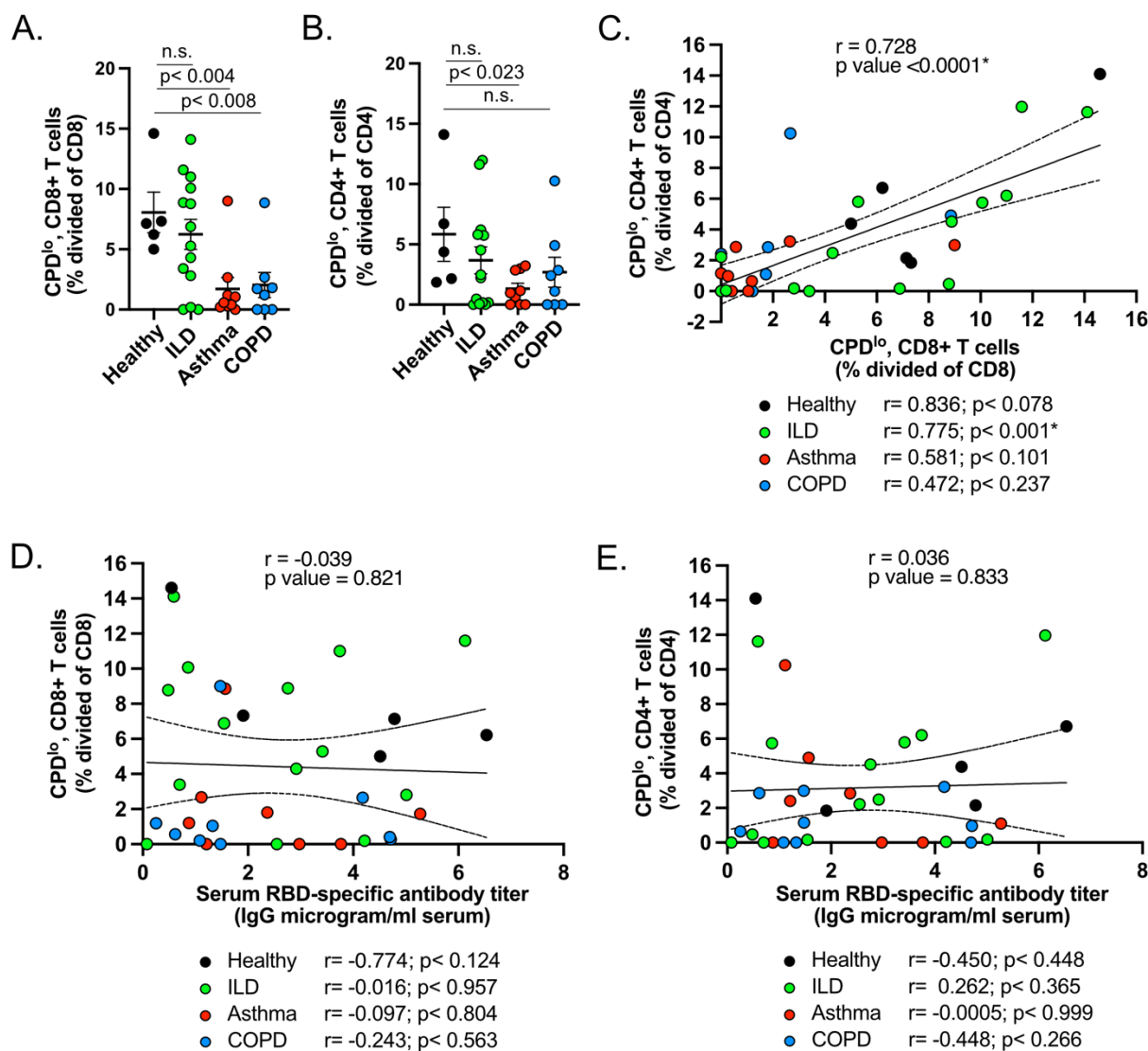


Figure 2

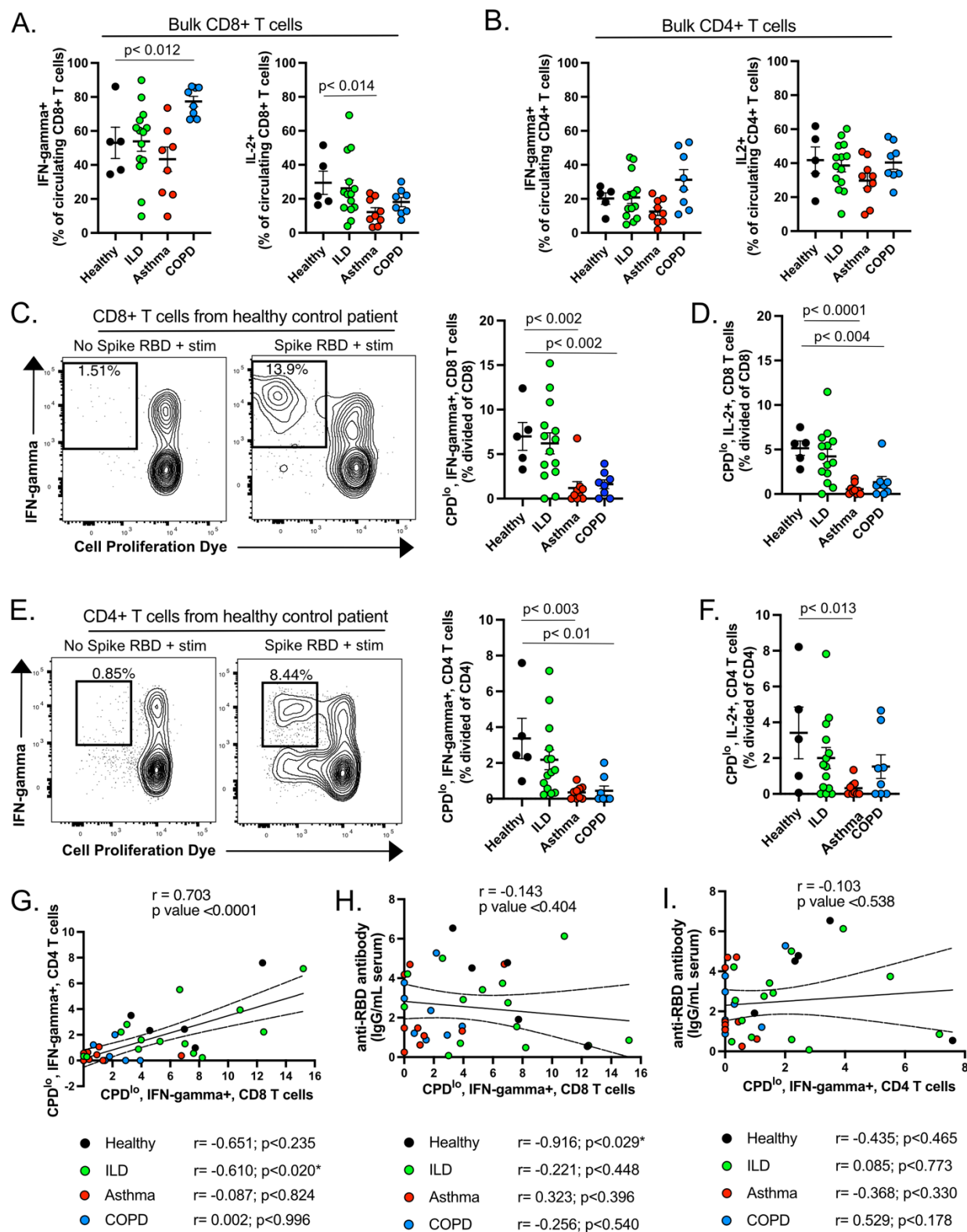


643 **Figure 3**

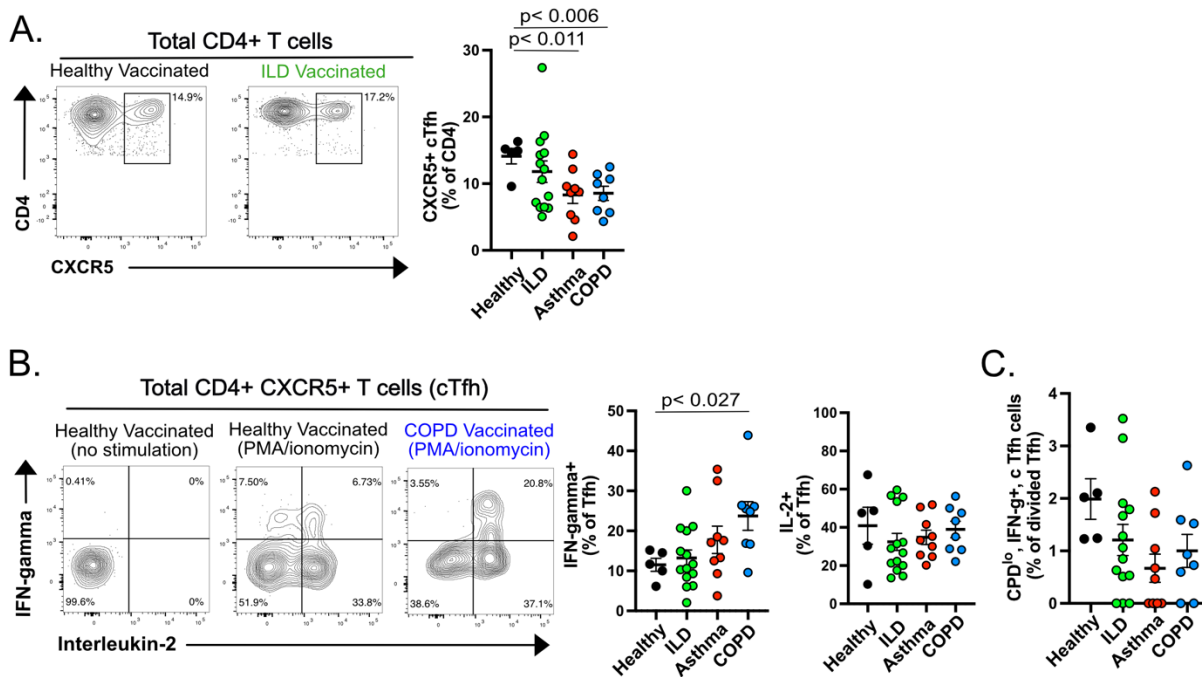


644

Figure 4



647 **Figure 5**



648

Figure Legends:

Figure 1: Impaired serum antibody titers against SARS-CoV-2 spike RBD in a subset of patients with chronic lung disease after vaccination. (A) ELISA for serum IgG binding to SARS-CoV-2 RBD in healthy (black), ILD (green), asthma (red), and COPD (blue) patients 14-231 days post SARS-CoV-2 mRNA vaccination. Line represents simple linear regression for healthy subjects flanked by 95% confidence intervals. **(B)** Serum anti-RBD antibodies detected 75-175 days after vaccination of healthy and chronic lung disease patients using the in-house ELISA were compared to antibody titers against the SARS-CoV-2 spike protein S1 domain using QuantiVac ELISA (EUROIMMUN) IgG binding antibody units (BAU). Statistical analysis: p values in (A) represent unpaired, T test comparing titers taken 75-175 days after last vaccination.

Figure 2: Decreased circulating RBD-reactive memory B cells in patients with chronic lung disease after vaccination compared to healthy controls. PBMC collected 14-175 days post vaccination. **(A)** Representative contour plots of circulating B cells from blood of patients pre- and post-SARS-CoV-2 vaccination. Gate represents dual RBD-tetramer binding B cells. **(B)** Graph represents the percentage of RBD+ B cells within the total circulating B cell pool of healthy (black), ILD (green), asthma (red) and COPD (blue) patients. **(C)** Correlation of serum anti-RBD antibody titers and circulating RBD-binding B cells detected in healthy and chronic lung disease patients after SARS-CoV-2 vaccination. Lines represents best-fit simple linear regression with flanking lines demarcating 95% confidence intervals. (n=8-14; error bars represent +/- S.E.M)

672

673 **Figure 3: Decreased circulating SARS-CoV-2 RBD-specific T cells in a subset of**
674 **patients with chronic lung disease after vaccination.** PBMC collected 75-220 days
675 post vaccination. **(A)** Graph represents the percentage of CPD-low (divided) RBD-
676 specific CD8⁺ T cells within the total circulating CD8⁺ T cell populations after culture
677 and stimulation with RBD-protein in healthy (black), ILD (green), asthma (red) and
678 COPD (blue) patients. Numbers are normalized by subtracting CPD-low population in
679 PBMC cultures that received no protein. **(B)** Graph represents the percentage of CPD-
680 low (divided) CD4⁺ T cells within the total circulating CD4⁺ T cell populations after
681 culture and stimulation with RBD-protein in healthy patients and patients with chronic
682 lung disease. Numbers are normalized by subtracting CPD-low population in PBMC
683 cultures that received no protein. **(C)** Correlation of CPD-low (divided) CD4⁺ and CD8⁺
684 T cells in circulation in healthy (black), ILD (green), COPD (blue), and asthma (red)
685 patients after SARS-CoV-2 vaccination. Central line represents best-fit simple linear
686 regression; flanking lines demarcate 95% confidence intervals. **(D)** Correlation between
687 CPD-low (divided) CD8⁺ T cells in circulation and serum antibody titers against RBD in
688 healthy (black), ILD (green), COPD (blue), and asthma (red) patients after SARS-CoV-2
689 vaccination. Central solid line represents best-fit simple linear regression; flanking lines
690 demarcate 95% confidence intervals. **(E)** Correlation between CPD-low (divided) CD4⁺
691 T cells in circulation and serum antibody titers against RBD in healthy (black), ILD
692 (green), COPD (blue), and asthma (red) patients after SARS-CoV-2 vaccination. Central
693 line represents best-fit simple linear regression; flanking lines demarcate 95%
694 confidence intervals. (n=5-14; error bars represent +/- S.E.M)).

695

696 **Figure 4: Impaired cytokine potential among SARS-CoV-2 RBD-specific T cells**
697 **after vaccination of patients with chronic lung disease.** PBMC collected 75-220
698 days post vaccination. **(A)** Graph represents the percentage of IFN-gamma and IL-2
699 expressing CD8⁺ T cells within the total circulating CD8⁺ T cell population after
700 stimulation with RBD-protein in healthy patients and patients with chronic lung disease.
701 **(B)** Graph represents the percentage of IFN-gamma and IL-2 expressing CD8⁺ T cells
702 within the total circulating CD8⁺ T cell population after stimulation with RBD-protein in
703 healthy patients and patients with chronic lung disease. **(C)** Contour plots and graph
704 identifying the percentage of IFN-gamma⁺ CPD-low (divided) CD8⁺ T cells within the
705 total CD8⁺ T cells pool. Gate in contour plot identifies circulating CPD-low (divided)
706 CD8⁺ T cells that express IFN-gamma. Dividing cells above background are only found
707 in cultures stimulated with RBD. **(D)** Graph identifying the percentage of IL-2⁺ CPD-low
708 (divided) CD8⁺ T cells within the total CD8⁺ T cells pool. Numbers in graph are
709 normalized by subtracting CPD-low (dividing) population in PBMC cultures that received
710 no protein. **(E)** Contour plots and graph identifying the percentage of IFN-gamma⁺
711 CPD-low (divided) CD4⁺ T cells within the total CD4⁺ T cells pool after vaccination.
712 Gate in contour plot identifies circulating CPD-low (divided) CD4⁺ T cells that express
713 IFN-gamma. Notable CPD^{low} population that falls outside of gate represents RBD-
714 responsive T cells that are not expressing IFN-gamma. Numbers in graph are
715 normalized by subtracting CPD-low (dividing) population in PBMC cultures that received
716 no protein. **(F)** Graph identifying the percentage of IL-2⁺ CPD-low (divided) CD4⁺ T
717 cells within the total CD4⁺ T cells pool. Numbers in graph are normalized by subtracting

CPD-low (dividing) population in PBMC cultures that received no protein. **(G, H, I)**

Correlation between IFN-gamma expressing CPD-low (divided) CD4+ and CD8+ T cells

(G), IFN-gamma expressing CPD-low (divided) CD8+ T cells and serum RBD antibody

titers (H) and IFN- γ expressing CPD-low (divided) CD4+ T cells and serum RBD

antibody titers (I) in healthy (black), ILD (green), asthma (red), and COPD (blue)

patients after SARS-CoV-2 vaccination. Central solid line represents best-fit simple

linear regression; flanking lines demarcate 95% confidence intervals. (n=5-14; error

bars represent +/- S.E.M)).

Figure 5: Patients with chronic lung disease have heterogeneous Tfh cell

responses after SARS-CoV-2 vaccination compared to healthy controls. PBMC

collected 75-220 days post vaccination. **(A)** Contour plots from representative PBMC

cultures from healthy and ILD vaccinated patients. Gate reveals the percentage of

CXCR5+ Tfh cells among total circulating CD4+ T cells. **(B)** Representative contour plots

of CXCR5+ Tfh cells from PBMC cultures of healthy and COPD vaccinated patients with

or without stimulation with PMA/ionomycin. Gates reveal the percentage of CXCR5+ Tfh

cells expressing one of or both IFN- γ and IL-2 cytokines. Graphs show the percentage

of cTfh in these distinct disease cohorts and healthy controls that express IFN- γ or IL-2.

(C) Graph shows the percentage of IFN- γ expressing CPD-low (divided) CXCR5+ Tfh

cells within the RBD-specific Tfh cell population in healthy patients and patients with

chronic lung conditions. Numbers in graph are normalized by subtracting CPD-low

(dividing) population in PBMC cultures that received no protein. (n=5-14; error bars

represent +/- S.E.M).