

# **Title:** Association of Healthy Dietary Patterns and Cardiorespiratory Fitness in the Community

**Authors:** Michael Y. Mi<sup>1</sup>, Priya Gajjar<sup>2</sup>, Maura E. Walker<sup>3,4</sup>, Patricia Miller<sup>5</sup>, Vanessa Xanthakis<sup>3,5,6</sup>, Venkatesh L. Murthy<sup>7</sup>, Martin G. Larson<sup>5,6</sup>, Ramachandran S. Vasan<sup>2,3,6,8</sup>, Ravi V. Shah<sup>9</sup>, Gregory D. Lewis<sup>10</sup>, Matthew Naylor<sup>2,3,6</sup>

## **Affiliations:**

1. Division of Cardiovascular Medicine, Department of Medicine, Beth Israel Deaconess Medical Center, Boston, MA.
2. Section of Cardiovascular Medicine, Department of Medicine, Boston University School of Medicine, Boston, MA.
3. Section of Preventive Medicine and Epidemiology, Department of Medicine, Boston University School of Medicine, Boston, MA.
4. Department of Health Sciences, Sargent College of Health and Rehabilitation Sciences, Boston University, Boston, MA.
5. Department of Biostatistics, Boston University School of Public Health, Boston, MA.
6. Framingham Heart Study, Framingham, MA.
7. Division of Cardiovascular Medicine, Department of Medicine, and Frankel Cardiovascular Center, University of Michigan, Ann Arbor, MI.
8. University of Texas School of Public Health San Antonio, and Departments of Medicine and Population Health Sciences, University of Texas Health Science Center, San Antonio, TX.
9. Vanderbilt Translational and Clinical Research Center, Cardiology Division, Vanderbilt University Medical Center, Nashville, TN.
10. Cardiology Division and Pulmonary Critical Care Unit, Department of Medicine, Massachusetts General Hospital, Boston, MA.

**Disclaimer:** The contents of this work are solely the responsibility of the authors and do not necessarily represent the official views of the National Institutes of Health.

## **Corresponding Author:**

Matthew Naylor, MD, MPH  
 Boston University School of Medicine  
 72 E Concord Street, Suite L-516  
 Boston, MA 02118  
 E-mail: mnaylor@bu.edu  
 Telephone: 617-638-8771

**Word count:** 5,899 (body and references)

# **Abstract**

**Aims:** To evaluate the associations of dietary indices and quantitative CRF measures in a large, community-based sample harnessing metabolomic profiling to interrogate shared biology.

**Methods:** Framingham Heart Study (FHS) participants underwent maximum effort cardiopulmonary exercise tests for CRF quantification (via peak  $\text{VO}_2$ ) and completed semi-quantitative FFQs. Dietary quality was assessed by the Alternative Healthy Eating Index (AHEI) and Mediterranean-style Diet Score (MDS), and fasting blood concentrations of 201 metabolites were quantified.

**Results:** In 2380 FHS participants ( $54 \pm 9$  years, 54% female, BMI  $28 \pm 5 \text{ kg/m}^2$ ), 1-SD higher AHEI and MDS were associated with 5.1% ( $1.2 \text{ ml/kg/min}$ ,  $p < 0.0001$ ) and 4.4% ( $1.0 \text{ ml/kg/min}$ ,  $p < 0.0001$ ) greater peak  $\text{VO}_2$  in linear models adjusted for age, sex, total energy intake, cardiovascular risk factors, and physical activity. In participants with metabolite profiling ( $N=1154$ ), 24 metabolites were concordantly associated with both dietary indices and peak  $\text{VO}_2$  in multivariable-adjusted linear models ( $\text{FDR} < 5\%$ ). These metabolites included C6 and C7 carnitines, C16:0 ceramide, and dimethylguanidino valeric acid, which were higher with lower CRF and poorer dietary quality and are known markers of insulin resistance and cardiovascular risk. Conversely, C38:7 phosphatidylcholine plasmalogen and C38:7 and C40:7 phosphatidylethanolamine plasmalogens were associated with higher CRF and favorable dietary quality and may link to lower cardiometabolic risk.

**Conclusion:** Higher diet quality is associated with greater CRF cross-sectionally in a middle-aged community-dwelling sample, and metabolites highlight potential shared favorable effects on health.

1    **Keywords:** Framingham Heart Study; Alternative Healthy Eating Index; Mediterranean diet;  
2    cardiorespiratory fitness; oxygen uptake; metabolomics  
3

## Introduction

Cardiorespiratory fitness (CRF) is an integrative measure of physiological reserve capacity and metabolic health that is closely linked with cardiovascular outcomes [1]. While an individual's CRF may be partially determined by standard cardiovascular disease (CVD) risk factors, there remains a large amount of interindividual variability in CRF that is not well understood [2]. Lifestyle factors are also likely to contribute to CRF and may present easily modifiable avenues for improving CRF [3]. Healthy dietary patterns are an important component of cardiovascular health [4], but it remains uncertain whether they are also related to CRF. Indeed, while putative mechanisms linking a healthy diet and improved fitness have been proposed to include anti-inflammatory effects or increased availability of antioxidants, these mechanisms are incompletely elucidated [5].

Although association of diet with CRF has been previously reported, prior studies relied primarily on treadmill exercise time as a surrogate for peak CRF, focused on specific (often younger) populations, and used varying dietary assessments that focused on specific food types rather than standardized and integrated indices of evidence-based healthy patterns of eating [5–14]. Furthermore, few studies have examined the association of macronutrient intake with fitness in population-based cohorts. One observational study of well-educated White adults presenting for preventive cardiac evaluation suggested that lower fat and higher carbohydrate intake as percentages of total energy were associated with higher fitness [13]. Whether such a relation holds in community-dwelling individuals consuming more contemporary diets requires further investigation.

To address these knowledge gaps, we related indices of healthy dietary patterns in community-dwelling individuals from the Framingham Heart Study (FHS) with maximum effort

cardiopulmonary exercise test (CPET) measures including peak  $\text{VO}_2$  (the “gold standard” assessment of CRF) and complementary CRF measures. We then further explored the relations between healthy dietary patterns and peak  $\text{VO}_2$  by comparing their joint associations with >200 circulating blood metabolites. Our overarching objective was to quantify the cross-sectional relation of healthy dietary patterns with CRF measures and to gain insight into potential mechanisms through metabolite profiling. We hypothesized that healthier patterns of eating would associate with greater CRF and that metabolites associated with dietary quality and CRF would highlight potential pathways linking diet and CRF.

## Methods

### *Study sample*

Descriptions of recruitment and enrollment of the FHS Generation Three, Omni Generation Two, and New Offspring cohorts are reported [15,16]. Briefly, these cohorts were recruited together and attended their first and second study visits in 2002 to 2005 and 2008 to 2011, respectively. Of the 3521 study participants attending the third study visit (2016 to 2019), 3117 participants underwent maximum effort CPET and 2494 of these individuals also completed semi-quantitative FFQs. We excluded individuals with missing CPET measures (N=18), inadequate volitional effort (peak RER <1.05; N=105), and missing covariate information (N=9), resulting in a final analytical sample of 2380 individuals (**Supplementary Figure 1**). From this subsample, targeted metabolomics profiling by liquid chromatography-mass spectrometry (LC-MS) was performed on peripheral blood drawn after  $\geq 8$  hours of fasting in 1154 individuals (**Supplementary Figure 1**). Protocols were approved by the Institutional

Review Boards at Boston University Medical Campus and Massachusetts General Hospital and all participants provided written informed consent.

### *Covariate assessment*

We included the following covariates in our analysis: sex, age, total energy intake, BMI, smoking status, total cholesterol, HDL, systolic blood pressure (SBP), self-reported use of anti-hypertensive medication, diabetes, and physical activity index (PAI). Total energy intake was calculated as described below from FFQ. We classified smoking status as never, former, or current (within the last year). Diabetes was assessed as fasting blood glucose  $\geq 126$  mg/dL, non-fasting blood glucose  $\geq 200$  mg/dL, or use of glucose lowering medications. PAI was calculated based on a weighted estimate of total oxygen consumption from questionnaires of typical daily activities. For sensitivity analysis, we substituted PAI with objectively measured sedentary time and amount of moderate-vigorous physical activity (MVPA) as measured by accelerometers worn for up to eight days, as described previously [3].

### *Dietary patterns*

Dietary intake was assessed using the Harvard semi-quantitative FFQ, which quantifies intake during the last year of 126 dietary items ranging from never or less than once per month to  $\geq 6$  servings/day. The FFQ has demonstrated good reproducibility and validity compared to a one-week dietary record [17]. We excluded FFQs with  $>12$  blank items or with improbable estimated daily energy intake, defined as  $<600$  or  $\geq 4000$  kcal/day for females and  $<600$  or  $\geq 4200$  kcal/day for males. For each participant, macronutrient intake was estimated by summing frequency of consumption multiplied by nutrient composition for the specific serving size of all food items on the FFQ [18]. Total energy intake was estimated based on 4 kcal/g for

carbohydrates and proteins and 9 kcal/g for fats, and percent macronutrient intake was calculated by dividing each component's energy contribution by the total energy.

We calculated indices of adherence to two dietary patterns, the Alternative Health Eating Index (AHEI) and the Mediterranean-style Diet Score (MDS), both of which are associated with CVD outcomes [19,20]. The AHEI assigns a score of 0 to 10 for each of the 11 dietary components and, thus, has a total range of 0 to 110 with higher scores indicating greater adherence [19]. The AHEI components include a higher intake of vegetables, fruits, whole grains, nuts/legumes, omega-3 fatty acids, PUFA, and a lower intake of sugar-sweetened beverages/fruit juice, red/processed meat, trans fatty acids, sodium, and sex-specific moderate alcohol use (**Supplementary Table 1**). To calculate the MDS score, we assigned cohort- and sex-specific quartile scores (score of 0 for the lowest quartile and 3 for the highest quartile) to each of eight components: vegetables, fruits, whole grains, nuts, legumes, red meat (scored in reverse), fish, and the ratio of MUFA to SFA, and a single score for sex-specific moderate alcohol use [21]. The MDS ranged from 0 to 25 with higher scores indicating greater similarity to a Mediterranean-style diet (**Supplementary Table 1**).

#### *Cardiopulmonary exercise testing*

Details of the CPET protocol and data collection have been described [3,22]. All participants exercised on the same cycle ergometer (Lode, Groningen, Netherlands) with breath-by-breath gas exchange values measured by the same metabolic cart (MedGraphics, St. Paul, MN). The assessment included at least 3 minutes of resting gas exchange measures, followed by 3 minutes of unloaded exercise, and then incremental ramp exercise on one of two (15 or 25 W/min) ramp protocols [3]. Peak  $\text{VO}_2$  was assessed as the highest 30-second median during the final minute of exercise. The following gas exchange and exercise variables were included:

resting absolute  $\text{VO}_2$ , resting relative  $\text{VO}_2$  (absolute  $\text{VO}_2$  divided by body weight), peak absolute  $\text{VO}_2$ , peak relative  $\text{VO}_2$ , percent predicted peak absolute  $\text{VO}_2$  by the Wasserman equation, resting RER, peak RER, resting HR, peak HR, percent predicted peak HR by the Tanaka formula,  $\text{VO}_2$ /work relationship, and ventilatory efficiency (minute ventilation per 1 L/min of carbon dioxide expiration, assessed as  $V_E/V_{\text{CO}_2}$  nadir) [23].

### *Metabolite profiling*

Fasting plasma samples were collected, immediately centrifuged, and stored at  $-80^\circ\text{C}$  without freeze-thaw cycles before assaying. Targeted measurement of polar metabolites was performed on a Nexera X2 UHPLC (Shimadzu Corporation, Kyoto, Japan) liquid chromatograph coupled to a Q Exactive hybrid quadrupole Orbitrap mass spectrometer (Thermo Fisher Scientific, Waltham, MA) with samples injected on a 150x2 mm, 3- $\mu\text{m}$  Atlantis hydrophilic interaction liquid chromatography (HILIC) column (Waters Corporation, Milford, MA) [22]. Peak integration was performed using TraceFinder (Thermo Fisher Scientific) and identified a broad selection of metabolites based on reference samples. These metabolite classes included amino acids, amino acid metabolites, acylcarnitines, purines, pyrimidines, glycerophospholipids, and sphingolipids.

### *Statistical analysis*

Peak  $\text{VO}_2$  (absolute and relative) were natural log transformed for improved normality and CPET measures and dietary indices were standardized to mean=0, SD=1 to facilitate comparison and interpretation. Metabolite levels were inverse rank-normalized for analysis and missing (below detection limit) metabolite values were imputed to half of the lowest detected values [22].



We evaluated the cross-sectional associations of dietary indices (AHEI and MDS; independent variables) with CPET fitness measures (dependent variables) using multivariable linear regression. First, we adjusted for age, sex, and total energy intake (model 1). In model 2, we additionally adjusted for BMI, smoking status, total cholesterol, HDL, SBP, hypertension medication use, diabetes, and PAI. We tested for effect modification by age (<54 years [median age] vs.  $\geq 54$  years), sex, and BMI (<25, 25–30, or  $\geq 30$  kg/m<sup>2</sup>) on the associations between dietary patterns and key CPET variables (peak relative VO<sub>2</sub>, resting relative VO<sub>2</sub>, and percent predicted peak VO<sub>2</sub>) using multiplicative interaction terms. In secondary analyses, we used the same multivariable linear regression models above to relate deciles of the percent daily energy intake from protein, fat, and carbohydrate with CPET fitness measures. A Benjamini-Hochberg false discovery rate (FDR) of 5% was used to determine statistical significance within each CPET variable and diet index analysis.

We conducted sensitivity analyses for the main associations of AHEI and MDS with CPET variables by substituting objective measures of sedentary time and MVPA for PAI in the analytic subset with available accelerometry data. We also examined the interrelationship between resting HR and peak VO<sub>2</sub> by adjusting each model for the other measure. We evaluated for non-linearity and threshold effects for the relations of the dietary indices with log-transformed relative peak VO<sub>2</sub> by constructing generalized additive models that applied a smooth function to allow the AHEI or MDS scores to have non-linear relations with log-transformed peak VO<sub>2</sub>; models were adjusted for age, sex, total energy intake, BMI, smoking status, total cholesterol, HDL, SBP, hypertension medication use, diabetes, and PAI. Model fits of the linear and general additive models were compared using ANOVA.

Transformed metabolite levels were then separately related to each of AHEI, MDS, and relative peak  $\text{VO}_2$  using multivariable linear regression. Models were first adjusted for age, sex, total energy intake, and BMI, and then we additionally adjusted for smoking status, total cholesterol, HDL, SBP, hypertension medication use, diabetes, and PAI. An FDR of 5% was used to determine statistical significance separately for associations of metabolites with AHEI, MDS, and peak  $\text{VO}_2$ . We then identified metabolites significantly associated with AHEI or MDS total scores and relative peak  $\text{VO}_2$ . We related these significant metabolites to individual components of AHEI and MDS using multivariable regression, adjusted for age, sex, total energy intake, BMI, smoking status, cholesterol, HDL, SBP, hypertension medication use, diabetes, and PAI. Again, an FDR of 5% was used to determine statistical significance separately for associations of metabolites with each dietary pattern component. Analyses were performed in R 4.0.3 (R Foundation for Statistical Computing, Vienna, Austria).

## Results

### *Sample characteristics*

Characteristics of the main study sample and the subsample with available metabolite measures are shown in **Table 1**. Participants had a mean age of  $54 \pm 9$  years, BMI of  $28.0 \pm 5.3$   $\text{kg/m}^2$ , and peak  $\text{VO}_2$  of  $23.3 \pm 6.9$   $\text{ml/kg/min}$  ( $91 \pm 20\%$  predicted), and 54% were female. The mean total energy intake was 1849 kcal/day for females and 2039 kcal/day for males. Across the cohort, overall energy intake comprised of approximately 44% carbohydrates, 36% fats, and 17% proteins. Mean AHEI and MDS scores were  $66.7 \pm 13.0$  and  $12.4 \pm 4.7$  respectively, which are largely consistent with ranges reported in other community-based studies [19,24–26]. Spearman correlation between AHEI and MDS was 0.72. Characteristics of the analytic

subsample with metabolite profiling performed were similar to the main sample with a higher proportion of White participants.

# *Relations of dietary quality assessment with fitness measures*

We related two different dietary quality indices (AHEI and MDS) with exercise response measures reflecting distinct physiologies. In models adjusted for age, sex, and total energy intake, higher dietary quality (both higher AHEI and MDS) was associated with higher resting VO<sub>2</sub> and with global CRF as measured by peak VO<sub>2</sub> (absolute, relative, and percent predicted). Dietary quality was also related to multi-dimensional exercise measures reflecting favorable autonomic function (higher peak HR and lower resting HR), greater oxygen uptake kinetics during exercise (VO<sub>2</sub>/work), and favorable central cardiac and pulmonary vascular function (lower V<sub>E</sub>/VCO<sub>2</sub>; **Supplementary Table 2**). With further adjustment for clinical risk factors and potential confounders, we observed attenuation of the relations with resting VO<sub>2</sub>, but associations with exercise measures remained robust (**Table 2**) with broad consistency across the two dietary indices. In the multivariable adjusted models, a 1-SD higher AHEI and MDS were associated with 5.1% (4.2% to 5.9%) and 4.4% (3.5% to 5.3%) greater peak relative VO<sub>2</sub>, respectively (which translates to 1.2 and 1.0 ml/kg/min at the sample mean of 23.3 ml/kg/min). We verified the linearity of these associations with general additive models, and no threshold effects were observed (ANOVA p>0.05 comparing linear to general additive models; **Figure 1**).

In sensitivity analyses, we substituted objectively measured physical activity and sedentary time (available in a subset of N=1777 individuals) for the questionnaire based PAI as adjustment variables, with minimal changes observed (**Supplementary Table 3**). To further explore whether the relation of a lower resting HR may be partially explained by higher fitness levels, we included both measures in models (**Supplementary Table 4**). Adjustment for peak

relative  $\text{VO}_2$  attenuated the effect size of dietary quality's relations with resting HR, but they remained significant in the main model. Adjustment for resting HR had minimal influence on the effect size of the relations between dietary quality and peak  $\text{VO}_2$ .

Next, we tested for effect modification by age, sex, or BMI on the relation of dietary quality and peak  $\text{VO}_2$  using multiplicative interaction terms. We observed a statistically significant interaction of age with both scores for the association with percent predicted peak  $\text{VO}_2$ , such that the effect estimate was higher in individuals younger than the median age of 54 years (**Supplementary Table 5**). There was no evidence of effect modification by sex or BMI.

Finally, we evaluated whether macronutrient components may be related to fitness measures. Consistent with known physiology and prior studies [27], we observed higher carbohydrate intake to be associated with a higher resting RER (**Supplementary Table 6**). Additionally, we observed that after controlling for total daily energy intake, a one decile higher percent energy intake from carbohydrates was associated with lower peak  $\text{VO}_2$ , whereas a higher percent energy intake from fat was associated with higher peak  $\text{VO}_2$ .

#### *Shared associations of diet and fitness measures with the circulating metabolome*

To evaluate the joint relations of dietary patterns and higher CRF with blood metabolites, we evaluated linear models adjusted for clinical risk factors. In multivariable adjusted models, 83 metabolites were associated with AHEI, 81 with MDS, and 53 with peak relative  $\text{VO}_2$  (FDR <5% for all; **Supplementary Table 7**). Of significant metabolite associations, 67 were shared between the two dietary patterns, 32 were shared between AHEI and peak relative  $\text{VO}_2$ , 24 were shared between MDS and peak relative  $\text{VO}_2$ , and 24 were common to all three (**Supplementary Figure 2**). Directions of associations of metabolites with favorable dietary quality and with higher peak  $\text{VO}_2$  were consistent (**Figure 2**).

**Table 3** summarizes the 24 metabolites associated with both dietary patterns and peak relative VO<sub>2</sub>. These include metabolites previously implicated in cardiometabolic health and fitness as well as novel metabolites with less well-elucidated roles in fitness. Many metabolites have established associations with cardiometabolic disease such as C6 and C7 carnitines, C16:0 ceramide, and dimethylguanidino valeric acid (DMGV), whose higher levels are linked to higher risks of diabetes and/or CVD [28–30] and associated with lower CRF and poorer dietary quality in our cohort. Conversely, higher C38:7 phosphatidylcholine (PC) plasmalogen and C38:7 and C40:7 phosphatidylethanolamine (PE) plasmalogen levels were associated with higher CRF and better dietary quality; as a group, plasmalogens are hypothesized to have antioxidant properties and negatively associated with metabolic diseases [31].

We then further explored the relations of metabolites with individual components of each dietary index (**Figure 3**). Some of the strongest metabolite associations with individual food groups included glycerophospholipids such as C40:7 and C38:7 PE plasmalogens, C38:7 PC plasmalogen, C22:6 lysophosphatidylcholine (LPC), C20:5 LPC, and C38:4 PE, which were positively associated with fish and omega-3 fatty acid intake, consistent with prior work [32,33]. These findings further support the validity of our dietary assessments by demonstrating relations with biochemical signatures of their intake.

## Discussion

Here, we provide a comprehensive examination of the associations of healthy dietary patterns with fitness measures in a large, community-based sample and quantify a broad circulating metabolome to explore joint associations of diet and fitness. Two readily applicable healthy dietary patterns were associated with CRF in our study with broad consistency across

age, sex, and BMI category. Specifically, a 1-SD higher AHEI or MDS was associated with a  $\approx 5\%$  greater peak  $\text{VO}_2$  (1.2 ml/kg/min at the sample mean); a magnitude similar to that observed for taking  $\approx 4000$  more steps per day in our previous work [3]. Adherence to healthy dietary patterns was also associated with multi-dimensional fitness measures reflecting distinct physiologies including autonomic function (rest and exercise HR), central cardiac and pulmonary vascular function ( $\text{V}_E/\text{VCO}_2$ ) [23], and oxygen uptake kinetics ( $\text{VO}_2/\text{work}$ ). By merging metabolite associations with dietary indices and CRF, we observed broad directional consistency between metabolite relations with favorable dietary quality and CRF, highlighted metabolites previously implicated in cardiometabolic disease, and identified novel metabolites that may link the shared biology of diet and fitness.

Prior studies have demonstrated associations of dietary components with fitness, but have primarily focused on specific populations (e.g., extremes of age) [6–10], estimated measures of fitness [5,6,11–14], or specific dietary components [6,10,12,13]. Our study adds to the literature by directly addressing some of the limitations of prior investigations on dietary patterns and fitness. First, the use of CPET enabled quantification of peak  $\text{VO}_2$  for objective assessment of fitness and ensured that an adequate (i.e., diagnostic) level of volitional effort was provided by all participants (via the RER). By using comprehensive CPET, we were also able to measure the association of diet with different physiological components of fitness. For example, we observed the expected relation of higher carbohydrate intake with resting RER [27], which served as a positive control and supported the accuracy of our dietary indices. The relations of dietary quality with measures of autonomic (HR responses) and central cardiac/pulmonary vascular function ( $\text{V}_E/\text{VCO}_2$ ) with exercise may also indicate that dietary quality has broader salutary effects beyond fuel substrate utilization on various organ systems.

Second, our large community-based sample enabled assessment of the relations between dietary quality and fitness throughout a broad age range and how they varied across sex, age, and BMI. We observed consistent associations (i.e., lack of effect modification) across sex and BMI categories, but there was a significant interaction between age and dietary quality scores on the association with percent predicted peak  $\text{VO}_2$ , suggesting a higher effect size in younger individuals. This finding is consistent with prior studies that have often demonstrated associations between dietary and fitness in younger cohorts [6,9,10].

Third, we captured dietary patterns with a widely used FFQ and two healthy dietary indices designed to reflect the best contemporary evidence for healthy eating [19,20]. Both the AHEI and MDS have been robustly associated with lower risk of cardiovascular and all-cause mortality and other health outcomes [19,20,34,35], and their components/scores are readily translatable to individuals or for use in intervention studies. Furthermore, the use of dietary patterns captures synergies between food sources and better reflects how individuals typically eat. We observed that as percentages of total energy consumed, increased carbohydrate intake and decreased fat intake were associated with lower peak  $\text{VO}_2$ . At the extremes, a very low-carbohydrate or ketogenic diet has been popularized for enhancing aerobic performance based on the theory that ketones may be more optimal fuel sources; however, the data for ketogenic diet improving peak  $\text{VO}_2$  in athletes are mixed [36]. A low-fat (<30% total energy intake) diet has been historically recommended for population health [37], but studies have increasingly shown that the quality and source of dietary fats and carbohydrates matter, leading to a focus on dietary patterns in recent guidelines [38]. In contrast to our findings, another observational study showed that lower fat intake was associated with higher CRF, but men in the study with high fitness also consumed less SFA (10.0% vs. 11.8% of total energy intake) and MUFA (12.6% vs. 14.5%) and

a similar amount of PUFA (7.4% vs. 7.4%) compared to those with low fitness [13]. This discordance highlights the importance of food sources when considering macronutrient intake.

These epidemiological observations highlight the need for further investigation of potential mechanisms linking diet and CRF. To begin to address this gap, we explored potential shared biological processes by leveraging metabolite profiling. We identified 24 metabolites that were significantly associated with peak  $\text{VO}_2$ , AHEI, and MDS after adjustment for physical activity and standard CVD risk factors. A particular strength of metabolomic interrogation in dietary research is that some metabolites may provide objective measures of the consumption of specific food items or the host-diet interaction. Indeed, several of our findings have been identified by prior studies to be associated with healthy dietary patterns [24,25,39–43]. Among our significant metabolites, those with previously reported positive associations with AHEI and MDS included lipid species such as C22:6 LPC, C38:7 PC plasmalogen, and C38:7 and C40:7 PE plasmalogens, which were all positively associated with greater fish intake. This finding is biochemically consistent with DHA being the fatty acid side chain in C22:6 LPC. Although our metabolomics platform did not precisely determine the fatty acid side chain composition of C38:7 PC plasmalogen, and C38:7 and C40:7 PE plasmalogens, DHA is likely one of their side chains based on their most plausible molecular structures. Omega-3 fatty acids are known to have favorable health benefits, and plasmalogens are hypothesized to have antioxidant properties and are inversely correlated with metabolic diseases [31]. It remains unclear whether these metabolites have benefits on CRF themselves versus being markers of omega-3 fatty acid intake. In small placebo-controlled pilot studies of athletes and sedentary adults, supplementation with DHA and EHA improved submaximal exercise HR, submaximal  $\text{VO}_2$ , and/or peak  $\text{VO}_2$  [44–46], and in rat models, dietary omega-3 fatty acids reduced myocardial oxygen consumption while



maintaining external work [47]. Potential mechanisms include increased altered mitochondrial membrane composition and mitochondrial biogenesis [48,49].

Metabolites with known inverse associations with AHEI and MDS included C6 and C7 carnitines, C18:1 sphingomyelin (SM), and C16:0 ceramide, which were also positively associated with intake of red meat, trans fatty acid, and SFA. Medium chain carnitines such as C6 and C7 carnitines are positively associated with obesity, type 2 diabetes, and CVD [28,50], and shorter chain sphingomyelins are positively associated with incident diabetes [51]. Ceramides have been recently identified as markers of incident CVD [29]; in mouse models, elevated C16:0 ceramide led to insulin resistance, and decreased C16:0 ceramide protected against diet-induced obesity [52]. Consequently, these metabolites are possibly linked to poor CRF through their relation with insulin resistance, which has been hypothesized to induce mitochondrial dysfunction [53] and may contribute to exercise intolerance.

In addition to the above known diet-related metabolites, we identified several metabolites displaying novel associations with dietary patterns and peak  $\text{VO}_2$ . One notable example is N-monomethyl-arginine (NMMA), which inhibits nitric oxide synthase and causes increased vascular resistance [54]. Given this mechanism, its positive association with peak relative  $\text{VO}_2$  was surprising and may reflect improved autoregulation of blood pressure in those with higher CRF whereas those with chronically increased vascular resistance may have suppressed NMMA levels. In a randomized cross-over study of 10 healthy volunteers, the administration of L-NMMA increased resting blood pressure but did not change peripheral vascular resistance or cardiac output during or after exercise [55], and in a population study of African Americans, higher NMMA was associated with decreased risk of incident coronary artery disease [56]. Also related to the nitric oxide pathway, we observed significant positive associations of AHEI, MDS,

and peak relative  $\text{VO}_2$  with N-acetyl-ornithine, which is an intermediate metabolite for arginine synthesis.

Overall, our analysis of metabolite associations with CRF and diet also implicated several metabolites with previously reported associations with cardiometabolic diseases. For example, higher cinnamoylglycine was associated with healthy dietary patterns and better CRF and was reported to be associated with decreased diabetes risk and improved insulin resistance [57]. By contrast, higher DMGV was associated with poorer dietary patterns and lower CRF and has been linked to poor metabolic health [58]. Given that CRF reflects underlying metabolic health, further studies are needed to determine whether the above metabolites are merely markers of dysmetabolism or whether they may have functional roles during exercise.

Our study provides a comprehensive assessment of the cross-sectional association between dietary quality and CRF in a large community-dwelling sample and uses shared associations with the circulating metabolome to infer potential biological mechanisms. Nevertheless, there are several limitations of the current investigation that warrant consideration. Despite adjustment for several potential confounders, we cannot exclude the possibility of residual confounding in this cross-sectional analysis. Future interventional studies are necessary to clarify whether the associations between diet and CRF are indeed causal. Moreover, how dietary choices at different time intervals prior to exercise (e.g., immediately before, in the days before, or in the weeks/months before) might influence CRF remains uncertain and would require prospective trials. Dietary quality assessment relied on self-recall and therefore may have limitations in regards to validity and reproducibility. While we do have several positive controls in our study that attest to the accuracy of the dietary information collected (e.g., peak RER and carbohydrate association, individual metabolites reflecting known food sources), the possibility

for the measurement error of dietary quality cannot be excluded. Finally, despite the inclusion of the multi-ethnic Omni cohort, our study sample mostly consisted of White individuals eating American-style diets; the generalizability to other racial and ethnic groups is, therefore, unknown.

In conclusion, we showed in a large, community-dwelling cohort that a healthy diet is strongly associated with CRF and other physiologically relevant exercise responses. We identified several metabolites that shared associations with healthy patterns of eating and peak  $\text{VO}_2$ , and many of these metabolites are known markers of cardiometabolic health. These findings provide a foundation for future work investigating whether dietary interventions that improve CRF may also impact long-term metabolic health.

**Funding:** The Framingham Heart Study is supported by the National Heart, Lung, and Blood Institute at the National Institutes of Health (contracts N01-HC-25195, HHSN268201500001I, and 75N92019D00031). M.Y.M. is supported by the National Institutes of Health (grant number T32-HL007208). M.E.W. is supported in part by the American Heart Association (grant number 20CDA35310237), the Doris Duke Charitable Foundation (grant number 2021261), and the National Center for Advancing Translational Sciences at the National Institutes of Health through BU-CTSI (grant number 1UL1TR001430). R.S.V. was supported in part by the Evans Medical Foundation and the Jay and Louis Coffman Endowment from the Department of Medicine, Boston University School of Medicine. R.V.S. is supported by the National Institutes of Health (grant number R01-HL136685). G.D.L. is supported by National Institutes of Health (grant number R01-HL131029) and American Heart Association (grant number 15GPSGC24800006). M.N. is supported by National Institutes of Health (grant number K23-HL138260, R01-HL156975) and by a Career Investment Award from the Department of Medicine, Boston University School of Medicine.

**Conflict of Interest:** V.L.M. owns stock in Amgen, General Electric, and Cardinal Health. He has received speaking honoraria from, serves as a scientific advisor for, and owns stock options in Ionetix. He has received research funding and speaking honoraria from Siemens Medical Imaging. He has served as a scientific advisor for Curium and has received expert witness fees from Jubilant Draximage. He has received a speaking honorarium from 2Quart Medical. He has received non-financial research support from INVIA Medical Imaging Solutions. In the past 12 months, R.V.S. has served as a consultant for Myokardia, Best Doctors, Amgen, and Cytokinetics. R.V.S. is a co-inventor on a patent for ex-RNAs signatures of cardiac remodeling.

The spouse of R.V.S. works for UpToDate (Wolters Kluwer). G.D.L. has research funding from Amgen, Cytokinetics, Applied Therapeutics, AstraZeneca, and Sonivie in relation to projects and clinical trials investigating exercise capacity that are distinct from this work. He has served as a scientific advisor for Pfizer, Merck, Boehringer-Ingelheim, Novartis, American Regent, Relypsa, Cycleron, Cytokinetics, and Amgen and receives royalties from UpToDate for scientific content authorship related to exercise physiology. M.N. has received speaking honoraria from Cytokinetics.

**Author Contributions:** M.Y.M., P.G., M.E.W., V.L.M., R.S.V., R.V.S., G.D.L., and M.N. designed research. M.E.W., P.M., V.X., R.S.V., R.V.S., G.D.L., and M.N. conducted research. M.Y.M., P.G., M.E.W., V.L.M., M.G.L., R.S.V., R.V.S., G.D.L., and M.N. analyzed data. M.Y.M., P.G., and M.N. wrote paper. M.N. had primary responsibility for final content. All authors have read and approved the final manuscript.

## References

1. Kodama S, Saito K, Tanaka S et al. Cardiorespiratory fitness as a quantitative predictor of all-cause mortality and cardiovascular events in healthy men and women: a meta-analysis. *JAMA* 2009;301:2024–35.
2. Harber MP, Kaminsky LA, Arena R et al. Impact of Cardiorespiratory Fitness on All-Cause and Disease-Specific Mortality: Advances Since 2009. *Prog Cardiovasc Dis* 2017;60:11–20.
3. Naylor M, Chernofsky A, Spartano NL et al. Physical activity and fitness in the community: the Framingham Heart Study. *Eur Heart J* 2021;42:4565–75.
4. Lloyd-Jones DM, Allen NB, Anderson CAM et al. Life's Essential 8: Updating and Enhancing the American Heart Association's Construct of Cardiovascular Health: A Presidential Advisory From the American Heart Association. *Circulation* 2022;101161CIR0000000000001078.
5. Seong M, Kim Y, Park S et al. Association Between Diet Quality and Cardiorespiratory Fitness in Korean Adults: The 2014-2015 National Fitness Award Project. *Nutrients* 2020;12:E3226.
6. Howe AS, Skidmore PML, Parnell WR et al. Cardiorespiratory fitness is positively associated with a healthy dietary pattern in New Zealand adolescents. *Public Health Nutr* 2016;19:1279–87.
7. Chan R, Yau F, Yu B et al. The Role of Dietary Patterns in the Contribution of Cardiorespiratory Fitness in Community-Dwelling Older Chinese Adults in Hong Kong. *J Am Med Dir Assoc* 2019;20:558–63.
8. Bibiloni MDM, Julibert A, Argelich E et al. Western and Mediterranean Dietary Patterns and Physical Activity and Fitness among Spanish Older Adults. *Nutrients* 2017;9:E704.
9. Santi-Cano MJ, Novalbos-Ruiz JP, Bernal-Jiménez MÁ et al. Association of Adherence to Specific Mediterranean Diet Components and Cardiorespiratory Fitness in Young Adults. *Nutrients* 2020;12:E776.
10. Tambalis KD, Panagiotakos DB, Psarra G et al. Association of cardiorespiratory fitness levels with dietary habits and lifestyle factors in schoolchildren. *Appl Physiol Nutr Metab* 2019;44:539–45.
11. Shikany JM, Jacobs DR, Lewis CE et al. Associations between food groups, dietary patterns, and cardiorespiratory fitness in the Coronary Artery Risk Development in Young Adults study. *Am J Clin Nutr* 2013;98:1402–9.
12. Cuenca-García M, Ortega FB, Huybrechts I et al. Cardiorespiratory fitness and dietary intake in European adolescents: the Healthy Lifestyle in Europe by Nutrition in Adolescence study. *Br J Nutr* 2012;107:1850–9.
13. Brodney S, Mcpherson RS, Carpenter RS et al. Nutrient intake of physically fit and unfit men and women. *Med Sci Sports Exerc* 2001;33:459–67.

- 428 14. Cuenca-García M, Artero EG, Sui X et al. Dietary indices, cardiovascular risk factors and  
429 mortality in middle-aged adults: findings from the Aerobics Center Longitudinal Study. *Ann*  
430 *Epidemiol* 2014;24:297-303.e2.
- 431 15. Splansky GL, Corey D, Yang Q et al. The Third Generation Cohort of the National Heart,  
432 Lung, and Blood Institute's Framingham Heart Study: design, recruitment, and initial  
433 examination. *Am J Epidemiol* 2007;165:1328–35.
- 434 16. Abraham TM, Massaro JM, Hoffmann U et al. Metabolic characterization of adults with  
435 binge eating in the general population: the Framingham Heart Study. *Obesity (Silver Spring)*  
436 2014;22:2441–9.
- 437 17. Feskanich D, Rimm EB, Giovannucci EL et al. Reproducibility and validity of food intake  
438 measurements from a semiquantitative food frequency questionnaire. *J Am Diet Assoc*  
439 1993;93:790–6.
- 440 18. Rimm EB, Giovannucci EL, Stampfer MJ et al. Reproducibility and validity of an expanded  
441 self-administered semiquantitative food frequency questionnaire among male health  
442 professionals. *Am J Epidemiol* 1992;135:1114–26; discussion 1127-1136.
- 443 19. Chiuve SE, Fung TT, Rimm EB et al. Alternative dietary indices both strongly predict risk of  
444 chronic disease. *J Nutr* 2012;142:1009–18.
- 445 20. Fung TT, Rexrode KM, Mantzoros CS et al. Mediterranean diet and incidence of and  
446 mortality from coronary heart disease and stroke in women. *Circulation* 2009;119:1093–100.
- 447 21. Ma J, Hennein R, Liu C et al. Improved Diet Quality Associates With Reduction in Liver Fat,  
448 Particularly in Individuals With High Genetic Risk Scores for Nonalcoholic Fatty Liver Disease.  
449 *Gastroenterology* 2018;155:107–17.
- 450 22. Naylor M, Shah RV, Miller PE et al. Metabolic Architecture of Acute Exercise Response in  
451 Middle-Aged Adults in the Community. *Circulation* 2020;142:1905–24.
- 452 23. Naylor M, Xanthakis V, Tanguay M et al. Clinical and Hemodynamic Associations and  
453 Prognostic Implications of Ventilatory Efficiency in Patients With Preserved Left Ventricular  
454 Systolic Function. *Circ Heart Fail* 2020;13:e006729.
- 455 24. Walker ME, Song RJ, Xu X et al. Proteomic and Metabolomic Correlates of Healthy Dietary  
456 Patterns: The Framingham Heart Study. *Nutrients* 2020;12:E1476.
- 457 25. McCullough ML, Maliniak ML, Stevens VL et al. Metabolomic markers of healthy dietary  
458 patterns in US postmenopausal women. *Am J Clin Nutr* 2019;109:1439–51.
- 459 26. Hu EA, Steffen LM, Coresh J et al. Adherence to the Healthy Eating Index-2015 and Other  
460 Dietary Patterns May Reduce Risk of Cardiovascular Disease, Cardiovascular Mortality, and  
461 All-Cause Mortality. *J Nutr* 2020;150:312–21.



27. Maunders E, Bradley HE, Deane CS et al. Effects of short-term graded dietary carbohydrate intake on intramuscular and whole body metabolism during moderate-intensity exercise. *Journal of Applied Physiology* 2021;131:376–87.
28. Mihalik SJ, Goodpaster BH, Kelley DE et al. Increased Levels of Plasma Acylcarnitines in Obesity and Type 2 Diabetes and Identification of a Marker of Glucolipotoxicity. *Obesity (Silver Spring)* 2010;18:1695–700.
29. Wang DD, Toledo E, Hruby A et al. Plasma Ceramides, Mediterranean Diet, and Incident Cardiovascular Disease in the PREDIMED Trial (Prevención con Dieta Mediterránea). *Circulation* 2017;135:2028–40.
30. Ottosson F, Ericson U, Almgren P et al. Dimethylguanidino Valerate: A Lifestyle-Related Metabolite Associated With Future Coronary Artery Disease and Cardiovascular Mortality. *J Am Heart Assoc* 2019;8:e012846.
31. Braverman NE, Moser AB. Functions of plasmalogen lipids in health and disease. *Biochim Biophys Acta* 2012;1822:1442–52.
32. Mazzilli KM, McClain KM, Lipworth L et al. Identification of 102 Correlations between Serum Metabolites and Habitual Diet in a Metabolomics Study of the Prostate, Lung, Colorectal, and Ovarian Cancer Trial. *J Nutr* 2020;150:694–703.
33. Ottestad I, Hassani S, Borge GI et al. Fish oil supplementation alters the plasma lipidomic profile and increases long-chain PUFAs of phospholipids and triglycerides in healthy subjects. *PLoS One* 2012;7:e42550.
34. Patel YR, Robbins JM, Gaziano JM et al. Mediterranean, DASH, and Alternate Healthy Eating Index Dietary Patterns and Risk of Death in the Physicians’ Health Study. *Nutrients* 2021;13:1893.
35. Morze J, Danielewicz A, Hoffmann G et al. Diet Quality as Assessed by the Healthy Eating Index, Alternate Healthy Eating Index, Dietary Approaches to Stop Hypertension Score, and Health Outcomes: A Second Update of a Systematic Review and Meta-Analysis of Cohort Studies. *J Acad Nutr Diet* 2020;120:1998–2031.e15.
36. Bailey CP, Hennessy E. A review of the ketogenic diet for endurance athletes: performance enhancer or placebo effect? *Journal of the International Society of Sports Nutrition* 2020;17:33.
37. U.S. Department of Agriculture and U.S. Department of Health and Human Services. *Nutrition and Your Health: Dietary Guidelines for Americans*. 4th ed. Washington, DC: Government Printing Office, 1995.
38. U.S. Department of Agriculture and U.S. Department of Health and Human Services. *Dietary Guidelines for Americans, 2020–2025*. 9th Edition. 2020.
39. Li J, Guasch-Ferré M, Chung W et al. The Mediterranean diet, plasma metabolome, and cardiovascular disease risk. *Eur Heart J* 2020;41:2645–56.



498 40. Playdon MC, Moore SC, Derkach A et al. Identifying biomarkers of dietary patterns by using  
499 metabolomics. *Am J Clin Nutr* 2017;105:450–65.

500 41. Bagheri M, Willett W, Townsend MK et al. A lipid-related metabolomic pattern of diet  
501 quality. *Am J Clin Nutr* 2020;112:1613–30.

502 42. Kim H, Hu EA, E Wong K et al. Serum Metabolites Associated with Healthy Diets in  
503 African Americans and European Americans. *J Nutr* 2021;151:40–9.

504 43. Rebholz CM, Lichtenstein AH, Zheng Z et al. Serum untargeted metabolomic profile of the  
505 Dietary Approaches to Stop Hypertension (DASH) dietary pattern. *Am J Clin Nutr*  
506 2018;108:243–55.

507 44. Thielecke F, Blannin A. Omega-3 Fatty Acids for Sport Performance-Are They Equally  
508 Beneficial for Athletes and Amateurs? A Narrative Review. *Nutrients* 2020;12:E3712.

509 45. Haghravan S, Keshavarz SA, Mazaheri R et al. Effect of Omega-3 PUFAs Supplementation  
510 with Lifestyle Modification on Anthropometric Indices and Vo2 max in Overweight Women.  
511 *Arch Iran Med* 2016;19:342–7.

512 46. Peoples GE, McLennan PL, Howe PRC et al. Fish oil reduces heart rate and oxygen  
513 consumption during exercise. *J Cardiovasc Pharmacol* 2008;52:540–7.

514 47. Pepe S, McLennan PL. Cardiac membrane fatty acid composition modulates myocardial  
515 oxygen consumption and postischemic recovery of contractile function. *Circulation*  
516 2002;105:2303–8.

517 48. Pepe S, Tsuchiya N, Lakatta EG et al. PUFA and aging modulate cardiac mitochondrial  
518 membrane lipid composition and Ca<sup>2+</sup> activation of PDH. *Am J Physiol* 1999;276:H149-158.

519 49. Laiglesia LM, Lorente-Cebrián S, Prieto-Hontoria PL et al. Eicosapentaenoic acid promotes  
520 mitochondrial biogenesis and beige-like features in subcutaneous adipocytes from overweight  
521 subjects. *J Nutr Biochem* 2016;37:76–82.

522 50. Zhao S, Liu M-L, Huang B et al. Acetylcarnitine Is Associated With Cardiovascular Disease  
523 Risk in Type 2 Diabetes Mellitus. *Front Endocrinol (Lausanne)* 2021;12:806819.

524 51. Chew WS, Torta F, Ji S et al. Large-scale lipidomics identifies associations between plasma  
525 sphingolipids and T2DM incidence. *JCI Insight* 2019;5:126925.

526 52. Hla T, Kolesnick R. C16:0-ceramide signals insulin resistance. *Cell Metab* 2014;20:703–5.

527 53. Shulman GI. Ectopic fat in insulin resistance, dyslipidemia, and cardiometabolic disease. *N*  
528 *Engl J Med* 2014;371:1131–41.

529 54. Moncada S, Higgs A. The L-arginine-nitric oxide pathway. *N Engl J Med* 1993;329:2002–  
530 12.

531 55. O’Gallagher K, Shabeeh H, Munir S et al. Effects of Inhibition of Nitric Oxide Synthase on  
532 Muscular Arteries During Exercise: Nitric Oxide Does Not Contribute to Vasodilation During  
533 Exercise or in Recovery. J Am Heart Assoc 2020;9:e013849.

534 56. Cruz DE, Tahir UA, Hu J et al. Metabolomic Analysis of Coronary Heart Disease in an  
535 African American Cohort From the Jackson Heart Study. JAMA Cardiol 2021, DOI:  
536 10.1001/jamacardio.2021.4925.

537 57. Adisakwattana S. Cinnamic Acid and Its Derivatives: Mechanisms for Prevention and  
538 Management of Diabetes and Its Complications. Nutrients 2017;9:E163.

539 58. O’Sullivan JF, Morningstar JE, Yang Q et al. Dimethylguanidino valeric acid is a marker of  
540 liver fat and predicts diabetes. J Clin Invest 2017;127:4394–402.

541

## Figure Legends

### **Figure 1:** Scatterplots of peak oxygen uptake ( $VO_2$ ) vs. Alternative Healthy Eating Index

(AHEI) in Panel A and Mediterranean-style Diet Score (MDS) in Panel B stratified by sex and overlaid with fitted curves from general additive models and their 95% confidence bounds.

Models were adjusted for age, sex, total energy intake, BMI, smoking status, total cholesterol, HDL, systolic blood pressure, hypertension medication use, diabetes, and physical activity index.

### **Figure 2:** The beta coefficients were plotted for each metabolite in relation to peak oxygen

uptake ( $VO_2$ ) (y-axis) and dietary indices scores (x-axis) in linear models adjusted for age, sex, total energy intake, BMI, smoking status, total cholesterol, HDL, systolic blood pressure,

hypertension medication use, diabetes, and physical activity index. Panel A shows results for

Alternative Healthy Eating Index, and Panel B shows results for Mediterranean-style Diet Score.

Point sizes reflect the average  $-\log_{10}$  p-values for associations between  $VO_2$  and the respective dietary index. Labeled metabolites have significant associations with respective dietary index

and  $VO_2$  after false discovery rate adjustment. DMGV, dimethylguanidino valeric acid; GABA, gamma-aminobutyric acid; NMMA, LPC, lysophosphatidylcholine; LPE,

lysophosphatidylethanolamine; N-monomethyl-arginine; PC, phosphatidylcholine; PE,

phosphatidylethanolamine; SM, sphingomyelin. For acyl group nomenclature, the number after

C denotes the number of carbon atoms, and the number after the colon denotes the number of double bonds.

### **Figure 3:** Heat maps of the estimated regression coefficients from models relating metabolites

that were significantly related to peak oxygen uptake ( $VO_2$ ) and Alternative Healthy Eating

Index (AHEI) and Mediterranean-style Diet Score (MDS) to dietary index components are

displayed. Linear regression models adjusted for age, sex, total energy intake, BMI, smoking

status, total cholesterol, HDL, hypertension medication use, diabetes, and physical activity index.

HILIC, hydrophilic interaction liquid chromatography; NMMA, N-monomethyl-arginine;

GABA, gamma-aminobutyric acid; DMGV, dimethylguanidino valeric acid; PE,

phosphatidylethanolamine; PC, phosphatidylcholine; LPC, lysophosphatidylcholine; LPE,

lysophosphatidylethanolamine; SM, sphingomyelin; EPA, eicosapentaenoic acid; DHA,

docosahexaenoic acid; MUFA, monounsaturated fatty acid; SFA, saturated fatty acid. For acyl

group nomenclature, the number after C denotes the number of carbon atoms, and the number

after the colon denotes the number of double bonds.

**Table 1: Sample characteristics**

<b>Variable</b>	<b>Main sample (N = 2380)</b>	<b>Subsample with metabolite profiling performed (N = 1154)</b>
Age, years	54±9	54±8
Women	1286 (54%)	624 (54%)
Non-White Race	198 (8%)	12 (1%)
Body Mass Index, kg/m <sup>2</sup>	28.0±5.3	27.6±5.2
Resting Systolic Blood Pressure, mmHg	119±14	119±14
Total Cholesterol, mg/dL	190.1±35.9	190.4±33.6
HDL, mg/dL	60.6±19.3	61.6±19.3
Physical Activity Index, METs/day	34±5	34±6
Smoking Status		
Never	1504 (63%)	735 (64%)
Former	742 (31%)	372 (32%)
Current	134 (6%)	47 (4%)
Hypertension Medication Use	505 (21%)	225 (20%)
Diabetes	180 (7.6%)	75 (6.5%)
Alternative Healthy Eating Index (0 to 110)	66.7±13.0	66.8±12.9
Mediterranean-style Diet Score (0 to 25)	12.4±4.7	12.4±4.7
Total Daily Energy Intake, kcal	1936±644	1959±627
Energy from Carbohydrates, %	44±8	44±8
Energy from Proteins, %	17±3	17±3
Energy from Fats, %	36±7	36±7
Resting Absolute VO <sub>2</sub> , mL/min	280.6±68.9	278.6±67.2
Resting Relative VO <sub>2</sub> , mL/kg/min	3.5±0.6	3.5±0.6
Peak Absolute VO <sub>2</sub> , mL/min	1861.8±638.2	1894.7±656.4
Peak Relative VO <sub>2</sub> , mL/kg/min	23.3±6.9	23.9±7.2
Percent Predicted Peak VO <sub>2</sub> , %	91.3±20.4	92.5±20.5
Resting Respiratory Exchange Ratio	0.89±0.08	0.88±0.07
Peak Respiratory Exchange Ratio	1.22±0.09	1.22±0.09
Resting HR, beats/min	72±12	72±12
Peak HR, beats/min	152±19	153±19
Percent Predicted Peak HR	89.2±10.1	89.8±10.1
VO <sub>2</sub> /work, mL/W/min	8.9±1.0	9.1±0.9
V <sub>E</sub> /VCO <sub>2</sub> nadir	27.0±2.8	26.9±2.8

Numbers expressed as mean  $\pm$  SD or n (%). Peak  $\text{VO}_2$  is predicted based on the Wasserman equation. Peak heart rate was predicted using the Tanaka formula. MET, metabolic equivalent of task.

**Table 2: Cross sectional associations of dietary patterns and cardiopulmonary exercise testing variables**

CPET Variables	Alternative Healthy Eating Index (N = 2380)			Mediterranean-style Diet Score (N = 2380)		
	Coefficient	SE	FDR p	Coefficient	SE	FDR p
Resting Absolute VO <sub>2</sub>	0.005	0.014	0.78	0.016	0.014	0.31
Resting Relative VO <sub>2</sub>	0.005	0.019	0.80	0.020	0.019	0.31
Peak Absolute VO <sub>2</sub>	0.147	0.013	<0.0001	0.127	0.014	<0.0001
Peak Relative VO <sub>2</sub>	0.170	0.014	<0.0001	0.148	0.015	<0.0001
Percent Predicted Peak VO <sub>2</sub>	0.212	0.020	<0.0001	0.183	0.021	<0.0001
Resting RER	-0.029	0.022	0.23	-0.017	0.023	0.44
Peak RER	-0.032	0.021	0.17	-0.036	0.022	0.13
Resting HR	-0.131	0.021	<0.0001	-0.115	0.022	<0.0001
Peak HR	0.055	0.018	0.0046	0.069	0.019	0.0004
Percent Predicted Peak HR	0.060	0.020	0.0049	0.077	0.021	0.0004
VO <sub>2</sub> /work	0.142	0.020	<0.0001	0.113	0.020	<0.0001
V <sub>E</sub> /VCO <sub>2</sub> nadir	-0.089	0.020	<0.0001	-0.064	0.020	0.0026

Absolute and relative VO<sub>2</sub> at rest and peak were log transformed. Coefficients represent change in CPET variables per one SD increase in dietary scores. Models were adjusted for age, sex, total energy intake, BMI, smoking status, cholesterol, HDL, systolic blood pressure, hypertension medication use, and physical activity index. P-values were adjusted for false discovery rate using the Benjamini-Hochberg method separately for each dietary pattern. CPET, cardiopulmonary exercise testing; FDR, false discovery rate; HR, heart rate; RER, respiratory exchange ratio.

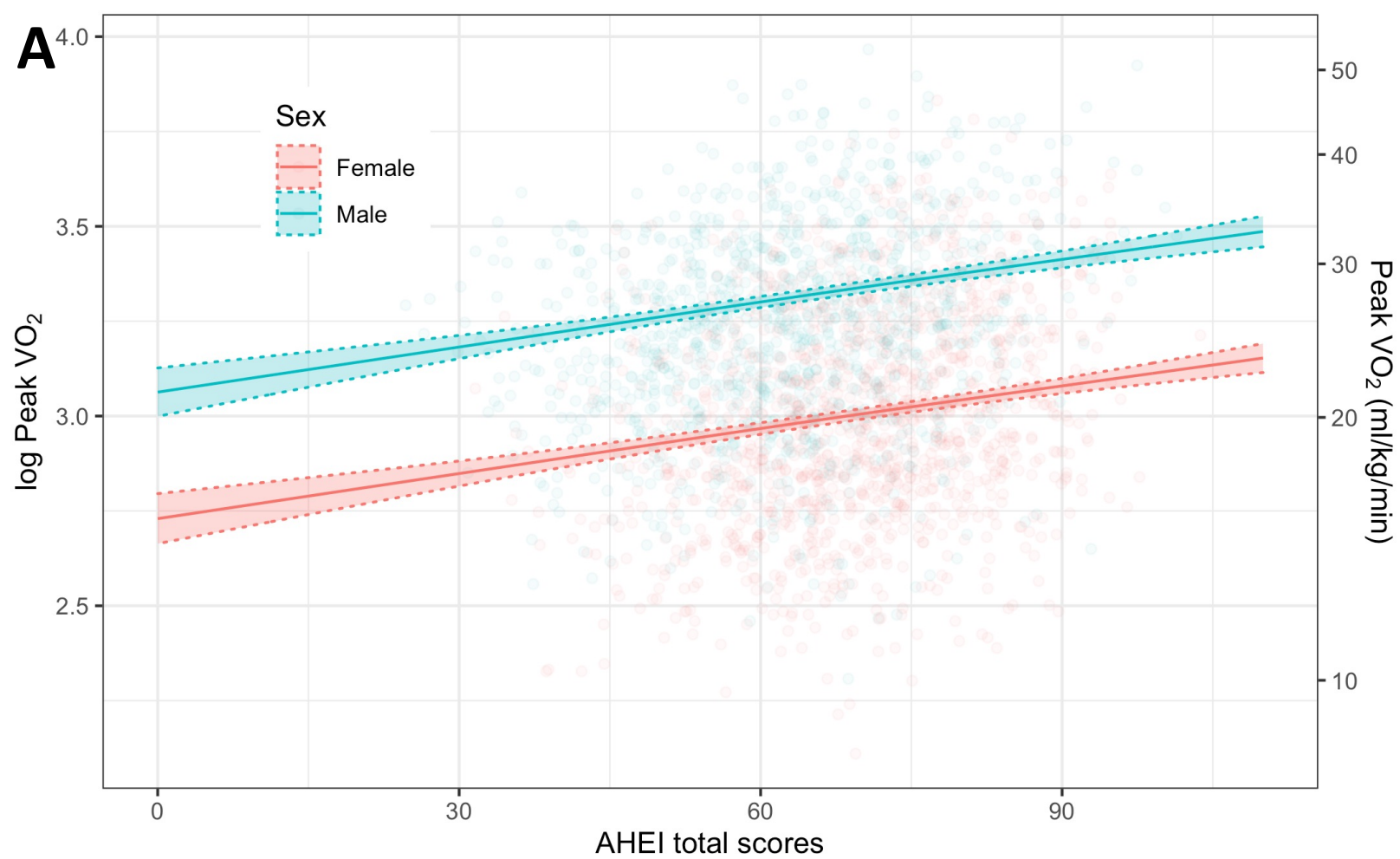
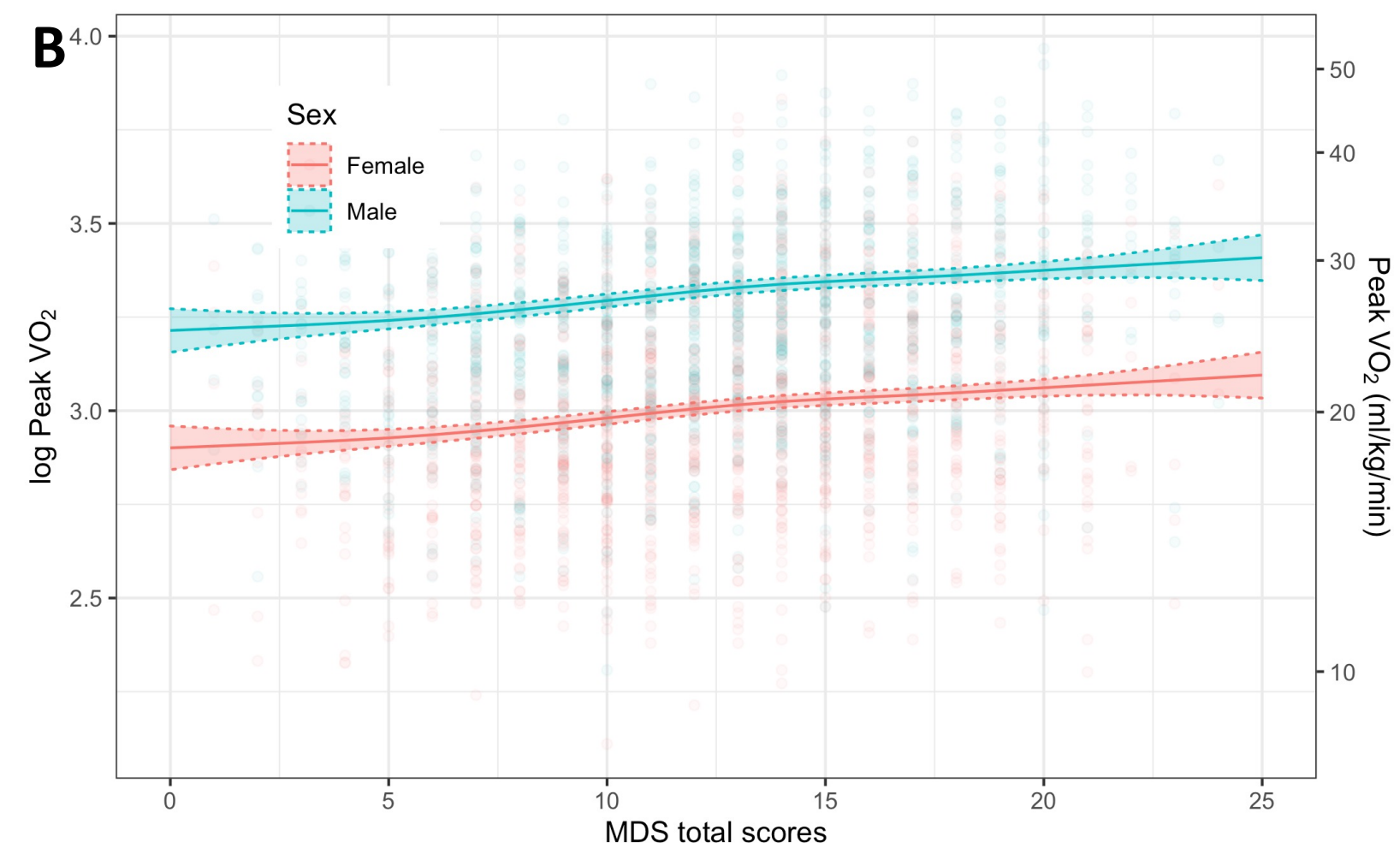
**Table 3: Summary of metabolites associated with dietary patterns and peak relative VO<sub>2</sub>**

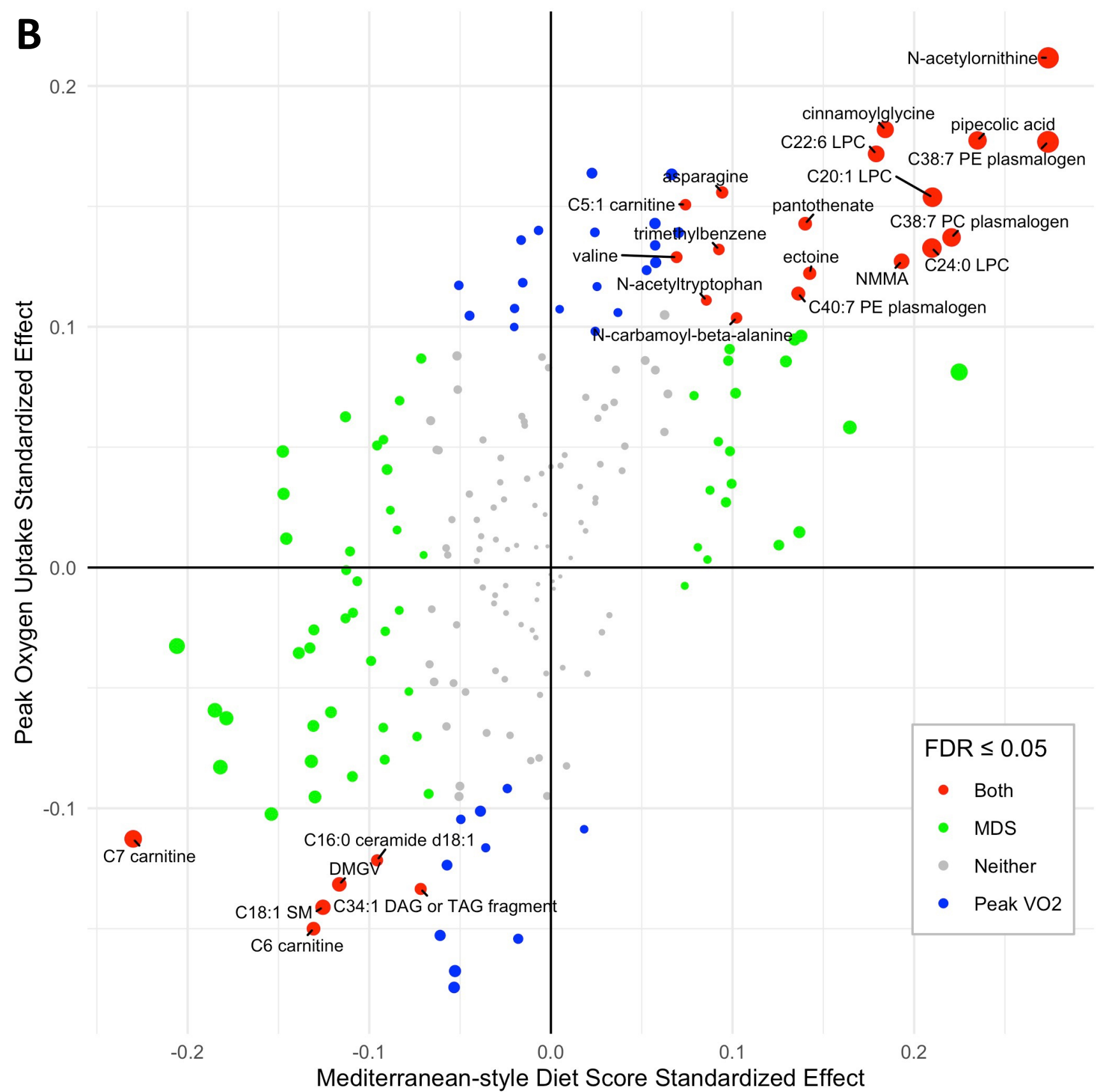
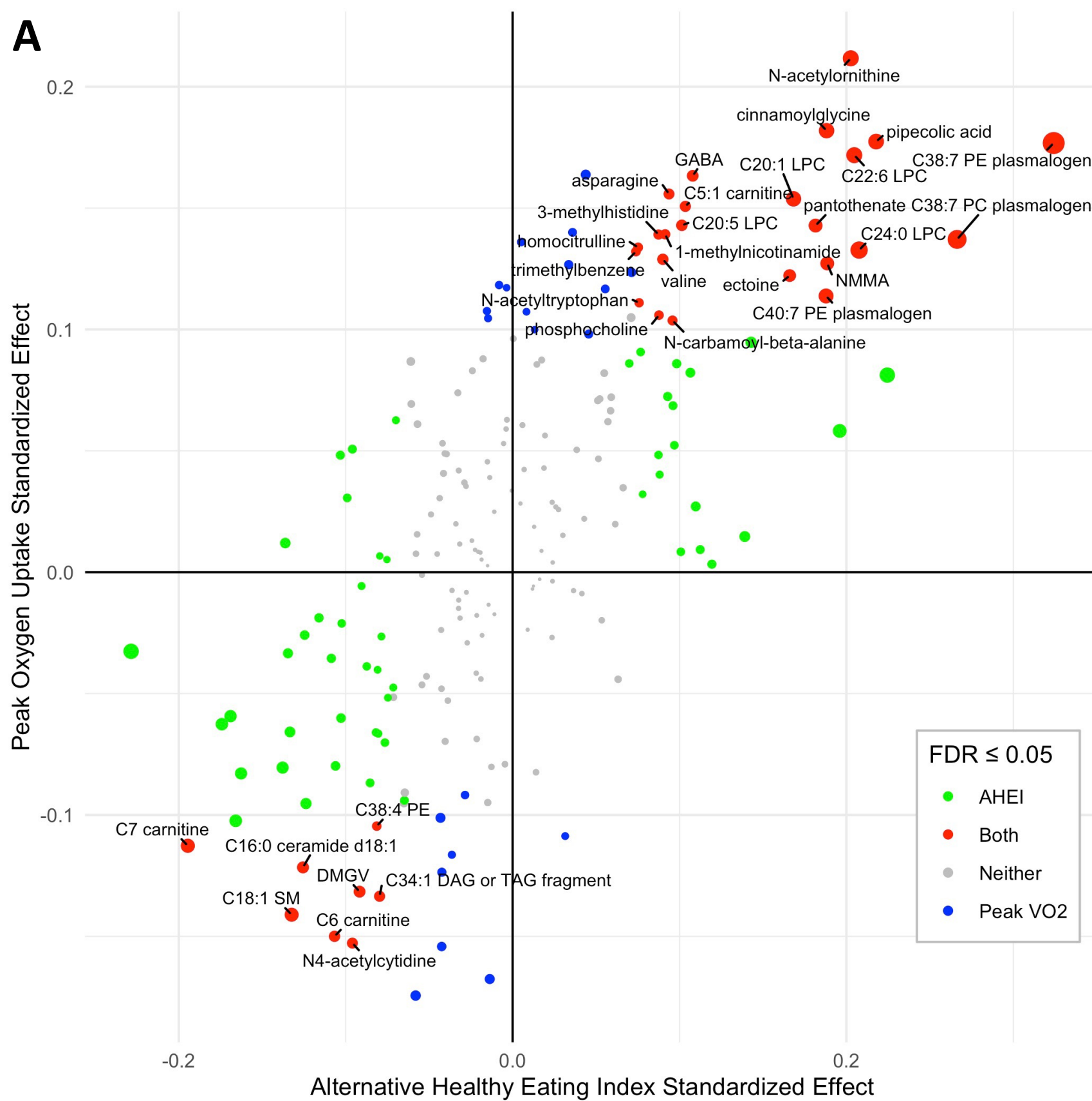
Metabolite Class	Metabolites	AHEI/ MDS	VO <sub>2</sub>	Diet and Biological Relationships
Glycerolipids	C34:1 DAG or TAG fragment	↓	↓	Intermediates of fatty acid metabolism, DAGs are found in small quantities (< 10%) in various seed oils [59], and ingestion has been associated with decreased weight, waist circumference, and serum triglyceride [59]
Glycerophosphocholines	C20:1 LPC	↑	↑	LPCs produced by cleavage of PCs by phospholipase A2, and saturated and shorter LPCs are pro-inflammatory whereas unsaturated and longer LPCs are anti-inflammatory [60,61]. C22:6 LPC associated with lower risk of type 2 diabetes. C22:6 LPC positively associated with AHEI and MDS [24], fish intake [32], and vegetable intake [62], and it increases with fish oil supplementation [33]. C24:0 LPC is inversely associated with diet high in meat and fast food [62].
	C22:6 LPC	↑	↑	
	C24:0 LPC	↑	↑	
Glycerophosphocholines	C38:7 PC Plasmalogen	↑	↑	Phospholipids found in neuronal and cardiac cell membranes. Exhibit antioxidant properties and inversely associated with obesity, diabetes, metabolic syndrome [31]; C38:7 PC and C38:7 PE plasmalogens are positively associated with MDS and fish intake [32,39]. Ether C38:7 PE and ether C40:7 PE increases with fish oil supplementation [33].
Glycerophosphoethanolamines	C38:7 PE Plasmalogen C40:7 PE Plasmalogen	↑	↑	
Ceramides	C16:0 Ceramide d18:1	↓	↓	Associated with incident CVD [29], and inversely associated with DASH diet [43]; Elevated level leads to insulin resistance, and lower levels protect from obesity in mouse models [52].
Sphingomyelins	C18:1 SM	↓	↓	Higher levels associated with diabetes [51]; inversely associated with AHEI, MDS, DASH diet, and fish intake [24,25,43]
Fatty esters	C5:1 Carnitine	↑	↑	Short chain acylcarnitine associated positively with insulin sensitivity [63]
	C6 Carnitine C7 Carnitine	↓	↓	Medium chain acylcarnitines associated with obesity, type 2 diabetes [28], and CVD [50]; inversely associated with MDS [39]
Benzenes	Trimethylbenzene	↑	↑	Used as industrial solvents and has three isomers, some of which are found naturally in plants [64]
Pyrimidines	Ectoine	↑	↑	Produced by various bacteria species, binds water molecules, and an osmoprotectant [65]; positively associated with chicken intake [32]
Amino acids, peptides, and derivatives	Asparagine	↑	↑	Non-essential amino acid, associated with decreased cardiovascular and all-cause mortality [66,67]
	Cinnamoyl-glycine	↑	↑	Conjugate of cinnamic acid and glycine and associated with decreased risk of diabetes [68]; cinnamic acid is synthesized in plants, commonly found in cinnamon, and derivatives of cinnamic acid



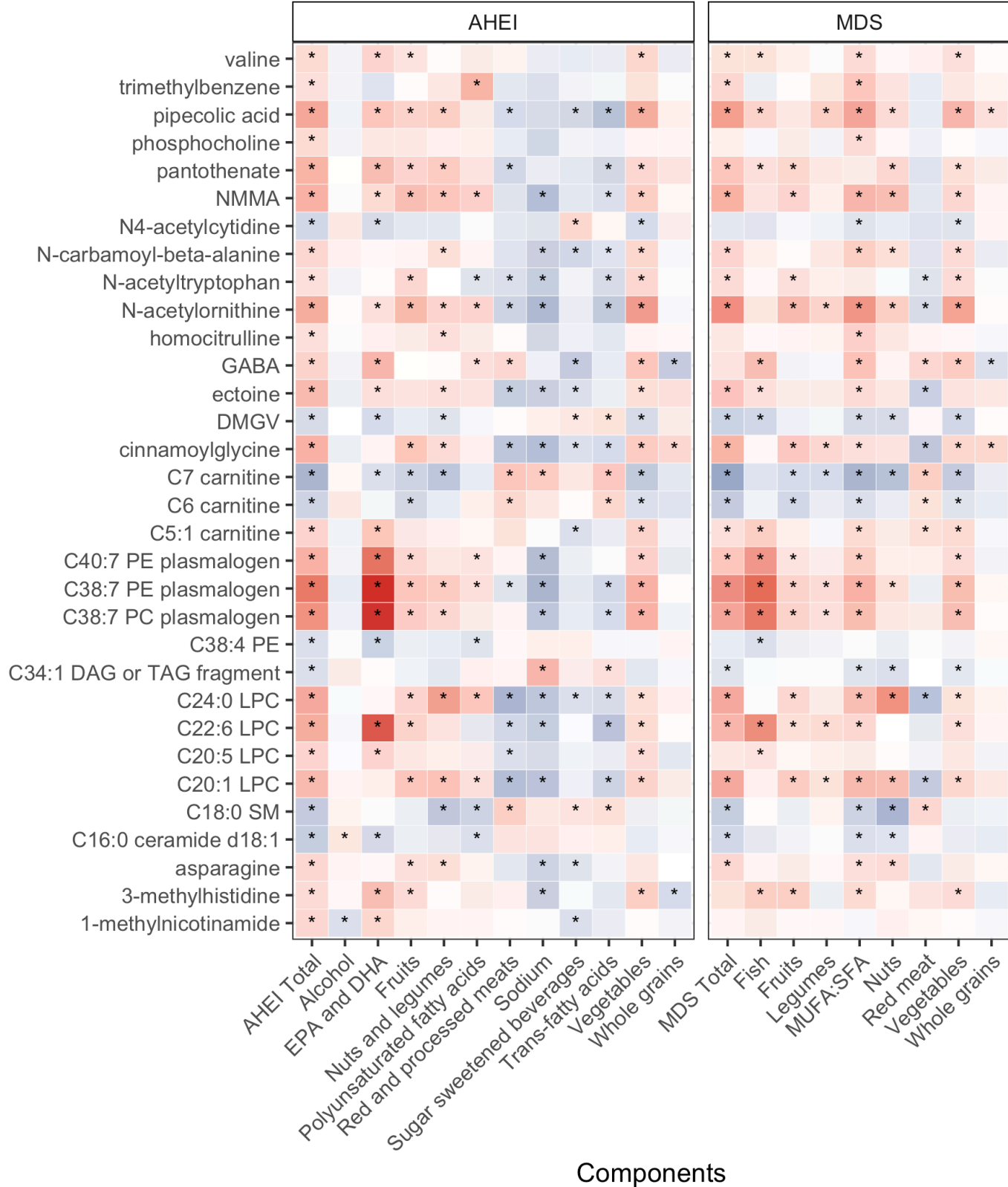
				linked with improved glucose homeostasis and insulin resistance [57].
	N-monomethyl-arginine (Targinine)	↑	↑	Methylated form of arginine, inhibitor of nitric oxide synthase, and potent vasoconstrictor [54]; associated with decreased risk of incident coronary heart disease in African Americans [56].
	N-acetyl-ornithine	↑	↑	Intermediate metabolite in the biosynthesis of arginine; positively associated with tea intake, DASH diet, vegetable intake, and AHEI [32,40,43]
	N-acetyl-tryptophan	↑	↑	Inhibitor of cytochrome c release and the binding of substance P to neurokinin 1 receptor with potential downstream neuroprotective effects [69]
	Pantothenate (Vitamin B <sub>5</sub> )	↑	↑	Component of coenzyme A synthesis, essential for fatty acid metabolism; positively associated with MDS [24]
	Pipecolic acid	↑	↑	Intermediate metabolite in the metabolism of lysine to 2-aminoadipic acid, which is associated with increased risk of incident diabetes [70]; elevated in peroxisome diseases, reported to have an inhibitory effect on the central nervous system [71]; positively associated with MDS and DASH diet [39,43]
	Valine	↑	↑	A branched chain amino acid, related to increased risk of incident diabetes and insulin resistance [72,73]; metabolized to beta-amino-isobutyric acid, which induces brown adipocyte specific gene expression [74]
Carboximidic acids	N-carbamoyl-beta-alanine (Ureidopropionic acid)	↑	↑	Intermediate metabolite of uracil catabolism to beta-alanine
Keto acids	Dimethyl-guanidino valeric acid (DMGV)	↓	↓	Associated with incident diabetes, nonalcoholic fatty liver disease, coronary artery disease, and cardiovascular mortality [30,58]; positively associated with sugar-sweetened beverage intake and inversely associated with vegetable intake [30]

AHEI, Alternative Healthy Eating Index; DAG, diacylglycerol; DASH, Dietary Approaches to Stop Hypertension; LPC, lysophosphatidylcholine; MDS, Mediterranean-style Diet Score; PC, phosphatidylcholine; PE, phosphatidylethanolamine; TAG, triacylglycerol. Number after C denotes carbon atoms in acyl side chains and number after colon denotes number of double bonds. References 59 to 74 are included in the Supplementary Material.

**A****B**



HILIC metabolites



Estimated regression coefficient

0.50

0.25

0.00

-0.25