

Title: Hypertension among persons living with HIV — Zambia, 2021; A cross-sectional study of a national electronic health record system

Authors: Jonas Z. Hines¹, Jose Tomas Prieto², Megumi Itoh¹, Sombo Fwoloshi^{3,4}, Khozha D. Zyambo³, Dalila Zachary¹, Cecilia Chitambala¹, Peter A. Minchella¹, Lloyd B. Mulenga³, Simon Agolory¹

Affiliations:

1. U.S. Centers for Disease Control and Prevention, Lusaka, Zambia
2. Palantir Technologies, Paris, France
3. Ministry of Health, Lusaka, Zambia
4. University of Zambia, School of Medicine

Keywords: Hypertension; Prevalence; HIV; Epidemiology; Non-communicable diseases; Zambia; Africa

Corresponding author:

Jonas Hines

U.S. Centers for Disease Control & Prevention (CDC) Zambia

351 Independence Avenue, Woodlands, Lusaka, Zambia

Phone: +260-211-257515

Email: jhines1@cdc.gov

Abstract (word count: 337)

Background

Hypertension is a major risk factor for cardiovascular disease, which is a common cause of death in Zambia. Data on hypertension prevalence in Zambia are scarce and limited to specific geographic areas and/or populations. We measured hypertension prevalence among persons living with HIV (PLHIV) in Zambia using a national electronic health record (EHR) system.

Methods

We did a cross-sectional study of hypertension prevalence among PLHIV aged ≥ 18 years in Zambia during 2021. Data were extracted from the SmartCare EHR, which covers $\sim 90\%$ of PLHIV on treatment in Zambia. PLHIV with ≥ 2 recorded blood pressure (BP) readings in 2021 were included. Hypertension was defined as ≥ 2 elevated BP readings (i.e., systolic BP of ≥ 140 mmHg or diastolic BP of ≥ 90 mmHg) during 2021 and/or on anti-hypertensive medication recorded in their EHR in the past five years. Multivariable logistic regression was used to assess associations between hypertension and independent variables.

Results

Among 750,098 PLHIV aged ≥ 18 years with ≥ 2 visits in SmartCare during 2021, 101,363 (13.5%) had ≥ 2 blood pressure readings recorded in their EHR. Among these PLHIV, 14.7% (95% confidence interval [CI]: 14.5-14.9) had hypertension during 2021. Only 8.9% of PLHIV with hypertension had an anti-hypertensive medication recorded in their EHR. The odds of hypertension were greater in older age groups compared to PLHIV aged 18-29 years (adjusted odds ratio [aOR] for 30-44 years: 2.6 [95% CI: 2.4-2.9]; aOR for 45-49 years: 6.4 [95% CI: 5.8-7.0]; aOR for ≥ 60 years: 14.5 [95% CI: 13.1-16.1]), urban areas (aOR: 1.9 [95% CI: 1.8-2.1]), and persons prescribed ART for ≥ 6 -month at a time (aOR: 1.1 [95% CI: 1.0-1.2]).

47

48 *Discussion*

49 Hypertension was common among a cohort of PLHIV in Zambia, with few having documentation of

50 being on antihypertensive treatment. Most PLHIV were excluded from the analysis because of missing

51 BP measurements in their EHR. Strengthening integrated management of non-communicable diseases in

52 ART clinics might help to diagnose and treat hypertension in Zambia. Data completeness needs to be

53 improved to routinely capture cardiovascular disease risk factors, including blood pressure readings

54 consistently for PHLIV in their EHRs.

55

Article (word count: 2,636)

Background

Non-communicable diseases are common causes of death in sub-Saharan African countries (1). In Zambia, a country in southern Africa, cerebrovascular accidents (CVAs) and ischemic heart disease are among most common causes of death (2,3). With widespread availability of antiretroviral therapy (ART), non-communicable diseases are increasingly a major cause of morbidity among persons living with HIV (PLHIV) (4,5), including in Zambia (6,7). Hypertension is a known major risk factor for CVA and other cardiovascular diseases. Although country-specific data on prevalence of hypertension in sub-Saharan African countries is limited, one meta-analysis estimated prevalence to be 16% (8).

PLHIV are at increased risk for noncommunicable diseases including cardiovascular disease (4,9–11). This risk might be attributed to effects of HIV (i.e., chronic inflammation) and/or side effects (e.g., metabolic syndrome, renal disease) of some ART (12,13). Some studies indicate PLHIV have a higher hypertension prevalence than people without HIV (14,15), with roughly 20-25% of PLHIV globally estimated to have hypertension (5,16,17). However, in sub-Saharan Africa, where most PLHIV reside, hypertension prevalence is not well-characterized at national levels and it is unclear if the prevalence of hypertension differs between PLHIV compared to people without HIV (15,18–20).

Data on hypertension prevalence in Zambia are limited. In the 2018 Zambia Demographic and Health Survey, self-reported hypertension prevalence among women was 8.8% (this information was not ascertained from male participants) (21). Studies that objectively measure blood pressure have been limited geographically and/or conducted in special populations (7,22–26). For instance, in one study among PLHIV in Lusaka, hypertension prevalence was 6.4%, of which only one-half of persons were aware of their hypertension diagnosis (23). Notably, approximately one-quarter of PLHIV with

hypertension in that study had suffered a major cardiovascular event, including CVA or myocardial infarction.

Thus, current estimates of hypertension among PLHIV in Zambia give an incomplete picture. In this study, we sought to measure the proportion of PLHIV with hypertension using data routinely captured in a national electronic health record (EHR) system, SmartCare EHR.

Methods

We conducted a cross-sectional study of hypertension among PLHIV aged ≥ 18 years in Zambia from January to December 2021 (the last full calendar year of data available). We analyzed data from the SmartCare EHR, which was introduced for the HIV program in the early 2000s and has been scaled-up nationally since then. SmartCare EHR supports clinical care by providing patients with their longitudinal health record at any facility operating the EHR. As of 2021, SmartCare EHR was in use in ~1,500 Zambian health facilities that provide care for approximately 90% of PLHIV on ART in Zambia.

Digitized SmartCare EHR data from health facilities are routinely consolidated and de-duplicated at the district and provincial levels, transported to Zambia MOH headquarters in Lusaka, and stored in Zambia's National Data Warehouse. All patient interactions (including clinical, pharmacy, and laboratory visits) at health facilities utilizing SmartCare EHR are recorded and data for most patients are entered into the system in real-time. In cases where health facilities record data on paper forms for retroactive data entry into SmartCare EHR, the process is completed prior to consolidation. Data from inpatient care are not captured in SmartCare EHR.

De-identified demographic data, clinical information, and pharmacy records were extracted from Zambia's SmartCare EHR system. Data were extracted for demographic characteristics, past medical history, medications, blood pressure measurements, height and weight, and laboratory data (CD4+ count, HIV viral load, and creatinine). Data are cleaned upon ingestion in Foundry (Palantir Technologies, Paris, France) by casting laboratory tests results values and physical measurements to numeric format. For some variables (i.e., non-HIV past medical history, diet, amount of physical activity, smoking history, blood cholesterol levels, and blood glucose) data were either completely missing or too sparse to analyze (i.e., <1% complete). Only PLHIV aged ≥ 18 years with ≥ 2 clinical visits in 2021 were eligible for inclusion in the study (in Zambia, BP is measured at each clinical visit but not necessarily at other patient interactions captured in SmartCare EHR [e.g., lab check, pharmacy pick-up]).

We defined elevated blood pressure as a systolic blood pressure reading of ≥ 140 mmHg or diastolic blood pressure readings of ≥ 90 mmHg. We defined hypertension as having ≥ 2 systolic blood pressure (SBP) readings of ≥ 140 mmHg or ≥ 2 diastolic blood pressure (DBP) readings of ≥ 90 mmHg (27) during 2021, or any PLHIV prescribed an antihypertensive medication in SmartCare EHR (including amloride, amlodipine, atenolol, carvedilol, enalapril, furosemide, hydralazine, hydrochlorothiazide, losartan, methyldopa, metoprolol, nifedipine, spironolactone, telmisartan, and valsartan) in the past five years. Because past medical history was not well captured in the EHR, we could not include persons with a historical hypertension diagnosis regardless of BP measurement readings during 2021. Among PLHIV with hypertension, we defined grade 2 hypertension as ≥ 1 reading with systolic blood pressure ≥ 160 mmHg or diastolic blood pressure ≥ 100 mmHg and hypertensive urgency as ≥ 1 reading with systolic blood pressure ≥ 180 mmHg or diastolic blood pressure ≥ 110 mmHg (27).

Hypertension was measured only among PLHIV with ≥ 2 blood pressure readings during 2021 because the hypertension case definition required two blood pressure readings. 95% confidence intervals (CIs) were calculated using the Clopper-Pearson exact method in R using epiR package (28). Bivariable logistic regression was used to measure the association between hypertension and independent variables. We conducted a multivariable logistic regression with variables with $\leq 10\%$ missingness (i.e., sex, age group, province, urban/rural designation, years on ART, current ART regimen, prescription length, and most recent viral load).

We also conducted an additional age- and sex- adjusted analysis to investigate the relationships between hypertension and kidney function. Specifically, we assessed the relationship between elevated creatinine (i.e., glomerular filtration rate < 60 mL/min/1.73m²) in the past year and hypertension. This was a separate analysis because creatinine data were too sparse to include in the multivariable analysis.

Lastly, we also assessed the association between integrase-inhibitor-containing ART regimens and being overweight or having obesity, because of prior association between metabolic syndrome and this medication class. This was relevant to the study objectives given there is an association between metabolic syndrome and cardiovascular disease. Being overweight or having obesity and hypertension were the only two components of metabolic syndrome we could measure from SmartCare EHR; the other components (high triglycerides, low high-density lipoprotein, and elevated fasting glucose) were too sparsely captured. This analysis was age- and sex-adjusted.

Results

Among 1,299,263 active PLHIV in SmartCare EHR during 2021, there were 750,098 (57.7%) persons aged ≥ 18 years that had ≥ 2 clinical visits in 2021 (Figure 1). Of these, 101,363 (13.5%) had ≥ 2 blood pressure readings recorded and were included in the analysis.

The complete cohort differed from the analytic cohort for all variables, although absolute differences for key variables like sex and age were minor (e.g., 5.5% were aged ≥ 60 years in the complete cohort compared to 6.6% in analytic cohort) (Table 1). Health facilities with direct electronic data entry at the point-of-care, which were concentrated in Lusaka and Southern Provinces, had greater blood pressure data completeness than health facilities where data was captured on paper and retrospectively entered into SmartCare EHR (22.5% versus 5.3% captured ≥ 2 BP readings, respectively).

Among PLHIV in the analytic dataset, the mean age was 41.6 years (standard deviation ± 11.4 years; range 18-104 years) and 64.7% were females. The median time on ART was 5.0 years (interquartile range: 2.0–9.0 years) and 95.7% of PLHIV were on dolutegravir-based ART regimens at most recent visit.

During 2021, 35.0% of PLHIV had ≥ 1 elevated blood pressure reading. During 2021, 14.7% (95% CI: 14.5-14.9) of PLHIV had hypertension (Table 2). The proportion of PLHIV with hypertension increased with increasing age, from 4.3% among PLHIV aged 18-29 years, to 10.1% among PLHIV aged 30-44 years, to 21.6% among PLHIV aged 45-59 years, and 37.4% for among PLHIV aged ≥ 60 years. Among PLHIV with hypertension, 60.7% had grade 2 hypertension and 27.0% had hypertensive urgency.

Overall, 2.0% of PLHIV had an anti-hypertensive medication recorded in their EHR in the past five years; 8.9% of PLHIV with two or more readings of SBP ≥ 140 mmHg or DBP ≥ 90 mmHg had an anti-hypertensive medication recorded in their EHR. Among any PLHIV with an anti-hypertensive medication

recorded, 85.9% had ≥ 1 reading with SBP ≥ 140 mmHg or DBP ≥ 90 mmHg and 60.2% had two elevated readings (i.e., were still hypertensive).

In the multivariable model, the odds of hypertension were greater for older age groups, PLHIV residing in urban areas and certain provinces, and PLHIV prescribed ART for ≥ 6 -month at a time (Table 2). Although dolutegravir-based regimens were associated with higher odds of hypertension compared to efavirenz-based regimens in the bivariable analysis, there was no difference after adjustment in the multivariable model. PLHIV who were overweight or had obesity had greater odds of hypertension than normal weight PLHIV (although data missingness precluded inclusion of this characteristic in the multivariable model).

PLHIV with hypertension had greater odds of having an elevated creatinine (Table 3). Lastly, PLHIV on dolutegravir-based regimens had higher odds of being overweight or having obesity compared to persons on other regimens (adjusted OR: 1.16 [95% CI: 1.03–1.32]).

Discussion

Hypertension was common among PLHIV in Zambia. Many PLHIV with hypertension had dangerously high blood pressure readings putting them at elevated risk for cardiovascular disease including CVAs and acute cardiovascular events. This finding might explain why cardiovascular disease are among the most common causes of death among PLHIV in Zambia (6,29,30). Few PLHIV with hypertension had documentation of being on antihypertensive treatment and among those that were, most did not have their blood pressure under control (as demonstrated by elevated blood pressure readings in these patients). Other studies in Zambia indicate suboptimal levels of hypertension treatment and control (21,23), which is similar to other countries in Africa (20,31,32). Integrating noncommunicable disease

care into routine HIV care might increase prevention, diagnosis, and management of hypertension in Zambia, potentially reducing cardiovascular disease-related morbidity and mortality (33). Although most PLHIV were excluded from the study because of missing BP data, to our knowledge, this analysis is the largest cohort study of hypertension among PLHIV.

That many hypertensive PLHIV still had elevated blood pressure readings despite antihypertensive treatment is demonstrative of the challenge of controlling hypertension even when treated (20,31,32); nevertheless this finding warrants action, with a focus on strategies to increase treatment of PLHIV with existing hypertension in Zambia and measures to prevent hypertension among those without it. Being older and overweight are established risk factors for hypertension, including among PLHIV (11,20). The observed geographic patterns of hypertension could be related to regional differences in diet (i.e., urban dwelling PLHIV consuming higher sodium diets or greater pollution exposure than those in rural areas) and/or be an artifact of poor data quality (i.e., highest proportion of PLHIV with hypertension observed in provinces that also had better data completeness).

Some reports link ART use with increased prevalence of hypertension among PLHIV in Africa (7,34,35). Although we could not assess this relationship in this study that was confined to PLHIV on ART, longer ART duration was not associated with hypertension, which is in contrast to findings from several other studies from countries in Africa (17,36). Some types of ART have been associated with hypertension (37), but in this analysis there were no associations between ART regimens and hypertension in the multivariable model.

The association of elevated BMI for PLHIV on dolutegravir-based regimens in this analysis could signify metabolic syndrome among these persons, with a potential side effect of integrase inhibitors (38); we

were not able to analyze glucose or lipid measurements to confirm this hypothesis. However, because many PLHIV in Zambia were transitioned to dolutegravir-based regimens from different ART regimens (i.e., efavirenz-based regimens) in the recent past, the elevated BMI among participants could also pre-date their transition to dolutegravir-based regimens so a different study design (i.e., cohort study) is warranted to further explore this potential signal. Nevertheless, the superior HIV viral load control and lower risk of HIV treatment failure make dolutegravir the preferred regimen in Zambia and other countries with generalized HIV epidemics (39).

The study had several limitations. Most importantly, blood pressure data completeness was very low, with only approximately one-eighth of PLHIV in the dataset being analyzed. Despite this limitation, this is one of the largest studies of hypertension reported from sub-Saharan Africa to date and provides the first national level study of hypertension in Zambia. However, the estimate is not nationally representative and, furthermore, only represents an estimate among PLHIV in care who were captured by the SmartCare EHR. Comparison to non-HIV-infected persons was not possible, but as SmartCare EHR is integrated into other care settings in Zambia, this will become possible. For some variables, high amounts of missingness precluded their inclusion in the multivariable model and, furthermore, some important variables (e.g., non-HIV past medical history) were not available. Additionally, past medical history was not captured in the dataset, so the proportion of PLHIV with diagnosed hypertension could not be assessed. Furthermore, very few records had a blood pressure medication documented. This could reflect low levels of hypertension treatment, limited availability of sphygmomanometers, or could result from data entry omissions at the point-of-care. If antihypertensive medications were not consistently recorded, then the true prevalence of hypertension among PLHIV in Zambia is likely higher. Next, only blood pressure readings occurring over a one-year period were assessed. This approach reduced the likelihood that two elevated blood pressure measurements were separated by long periods

of time, but also led to the exclusion of blood pressure measurements that occurred outside of the defined period potentially affecting the hypertension estimates. Lastly, the EHR does not capture inpatient data, so information on consequences of uncontrolled hypertension (e.g., stroke or myocardial infarction) were not available.

This analysis points to a need to improve hypertension management for PLHIV in Zambia. Some of the existing practices that rely on referring patients with elevated BPs to the outpatient department (i.e., urgent care) for further evaluation might result in patient attrition, missing opportunities to adequately manage this common comorbidity among PLHIV in Zambia. Integrated primary care models for PLHIV have better outcomes for non-communicable disease management (40), and can even result in better viral suppression (41). ART clinics in Zambia might benefit from instituting integrated management of noncommunicable diseases, including life-style modification, anti-hypertensive therapy with appropriate treatment intensification, and medication adherence assessments for hypertension (42). An integrated primary care model for conditions like hypertension is possible in countries like Zambia and can improve patient outcomes (32,33). With integration, multi-month dispensing is a promising approach for co-management of HIV and hypertension (43).

Routinely monitoring for hypertension, along with documenting other health measures (e.g., diet, smoking status, BMI) in the EHR would not only allow medical providers to determine client's cardiovascular risk for CVAs or other cardiovascular events and target treatment, but also might provide data needed to identify specific health facilities or clinicians that would benefit from educational interventions in management of these risk factors and conditions. EHRs like SmartCare are promising data sources for noncommunicable diseases surveillance given their reach, routine use in clinical setting, and richness of information. For this to be successful, data completeness needs to be improved to

routinely capture cardiovascular disease risk factors, including blood pressure readings consistently for
PHLIV in their EHRs.

Hypertension was common among PLHIV in Zambia and many persons might not be adequately
diagnosed or treated. It is important for ART clinic providers to consider hypertension among PLHIV and
institute strategies to manage it appropriately. This will require adequate capacitation of the Zambian
health workforce to recognize and manage hypertension. Additionally, care models that integrate
hypertension (and other NCDs) management into ART clinics are promising strategies to improve care.
EHRs might be used to routinely track program implementation at little additional data collection effort,
and can be adapted into noncommunicable diseases surveillance systems. Addressing hypertension and
other noncommunicable diseases will be important to reducing morbidity and mortality of PLHIV in
Zambia.

Ethics statement: The study protocol was approved by the ERES Converge IRB in Lusaka, Zambia; it was
also reviewed in accordance with CDC human research protection procedures and was determined to be
research, but CDC investigators did not interact with human subjects or have access to identifiable data
or specimens for research purposes. all methods were carried out in accordance with relevant guidelines
and regulations. This project met requirements for waiver of informed consent documentation, which
was granted by ERES Converge IRB in Zambia.

Authorship Disclaimer

The findings and conclusions in this report are those of the author(s) and do not necessarily represent
the official position of the funding agencies

293 *PEPFAR Funding Acknowledgment*

294 This research has been supported by the President's Emergency Plan for AIDS Relief (PEPFAR) through
295 the Centers for Disease Control and Prevention (CDC) through a cooperative agreement with the Zambia
296 Ministry of Health and a cooperative agreement with Palantir Technologies

297

298 *Conflict of interest statement*

299 The authors have no conflicts to disclose

300

301

References

1. Abbafati C, Abbas KM, Abbasi-Kangevari M, Abd-Allah F, Abdelalim A, Abdollahi M, et al. Global burden of 369 diseases and injuries in 204 countries and territories, 1990–2019: a systematic analysis for the Global Burden of Disease Study 2019. *Lancet*. 2020;396(10258).
2. Institute for Health Metrics and Evaluation. Zambia: What causes the most deaths? [Internet]. [cited 2020 Nov 17]. Available from: <http://www.healthdata.org/zambia>
3. Mapoma CC, Munkombwe B, Mwango C, Bwalya BB, Kalindi A, Gona NP. Application of verbal autopsy in routine civil registration in Lusaka District of Zambia. *BMC Health Serv Res*. 2021;21(1):1–11.
4. Shah AS V, Stelzle D, Lee KK, Beck EJ, Alam S, Clifford S, et al. Global Burden of Atherosclerotic Cardiovascular Disease in People Living With HIV: Systematic Review and Meta-Analysis. *Circulation*. 2018 Sep;138(11):1100–12.
5. Patel P, Rose CE, Collins PY, Nuche-Berenguer B, Sahasrabuddhe V V, Peprah E, et al. Noncommunicable diseases among HIV-infected persons in low-income and middle-income countries: a systematic review and meta-analysis. *AIDS*. 2018 Jul;32 Suppl 1(Suppl 1):S5–20.
6. Cheelo M. Top causes of Mortality among Community Deaths in Zambia, 2020-2021. In: Annual National HIV/TB/COVID-19/Hepatitis B Technical Conference. Lusaka, Zambia; 2021.
7. Musekwa R, Hamooya BM, Koethe JR, Nzala S, Masenga SK. Prevalence and correlates of hypertension in HIV-positive adults from the Livingstone Central Hospital, Zambia. *Pan Afr Med J*. 2021;39:237.
8. Twagirumukiza M, De Bacquer D, Kips JG, de Backer G, Stichele R Vander, Van Bortel LM. Current and projected prevalence of arterial hypertension in sub-Saharan Africa by sex, age and habitat: an estimate from population studies. *J Hypertens*. 2011 Jul;29(7):1243–52.
9. Benjamin LA, Corbett EL, Connor MD, Mzinganjira H, Kampondeni S, Choko A, et al. HIV,

326 antiretroviral treatment, hypertension, and stroke in Malawian adults: A case-control study.
327 Neurology. 2016 Jan;86(4):324–33.

328 10. Walker RW, Jusabani A, Aris E, Gray WK, Unwin N, Swai M, et al. Stroke risk factors in an incident
329 population in urban and rural Tanzania: a prospective, community-based, case-control study.
330 Lancet Glob Heal. 2013 Nov;1(5):e282-8.

331 11. Ake JA, Polyak CS, Crowell TA, Kiweewa F, Semwogerere M, Maganga L, et al. Noninfectious
332 Comorbidity in the African Cohort Study. Clin Infect Dis. 2019;69(4).

333 12. Hsue PY, Deeks SG, Hunt PW. Immunologic basis of cardiovascular disease in HIV-infected adults.
334 J Infect Dis. 2012 Jun;205 Suppl(Suppl 3):S375-82.

335 13. Friis-Møller N, Sabin CA, Weber R, d'Arminio Monforte A, El-Sadr WM, Reiss P, et al. Combination
336 antiretroviral therapy and the risk of myocardial infarction. N Engl J Med. 2003
337 Nov;349(21):1993–2003.

338 14. Gallant J, Hsue PY, Shreay S, Meyer N. Comorbidities among US Patients with Prevalent HIV
339 Infection - A Trend Analysis. In: Journal of Infectious Diseases. 2017.

340 15. Davis K, Perez-Guzman P, Hoyer A, Brinks R, Gregg E, Althoff KN, et al. Association between HIV
341 infection and hypertension: a global systematic review and meta-analysis of cross-sectional
342 studies. BMC Med. 2021;19(1).

343 16. Xu Y, Chen X, Wang K. Global prevalence of hypertension among people living with HIV: a
344 systematic review and meta-analysis. J Am Soc Hypertens. 2017 Aug;11(8):530–40.

345 17. Bigna JJ, Ndoadoumgue AL, Nansseu JR, Tochie JN, Nyaga UF, Nkeck JR, et al. Global burden of
346 hypertension among people living with HIV in the era of increased life expectancy: a systematic
347 review and meta-analysis. J Hypertens. 2020 Sep;38(9):1659–68.

348 18. Dillon DG, Gurdasani D, Riha J, Ekoru K, Asiki G, Mayanja BN, et al. Association of HIV and ART
349 with cardiometabolic traits in sub-Saharan Africa: a systematic review and meta-analysis. Int J

350 Epidemiol. 2013 Dec;42(6):1754–71.

351 19. Mogaka JN, Sharma M, Temu T, Masyuko S, Kinuthia J, Osoti A, et al. Prevalence and factors
352 associated with hypertension among adults with and without HIV in Western Kenya. PLoS One.
353 2022;17(1):e0262400.

354 20. Kwarisiima D, Balzer L, Heller D, Kotwani P, Chamie G, Clark T, et al. Population-Based
355 Assessment of Hypertension Epidemiology and Risk Factors among HIV-Positive and General
356 Populations in Rural Uganda. PLoS One. 2016;11(5):e0156309.

357 21. Zambia Statistics Agency, Ministry of Health, University Teaching Hospital Virology laboratory,
358 ICF. Zambia Demographic and Health Survey 2018. 2019;540.

359 22. Yan LD, Chi BH, Sindano N, Bosomprah S, Stringer JS, Chilengi R. Prevalence of hypertension and
360 its treatment among adults presenting to primary health clinics in rural Zambia: analysis of an
361 observational database. BMC Public Health. 2015 Sep;15:933.

362 23. Bauer S, Wa Mwanza M, Chilengi R, Holmes CB, Zyambo Z, Furrer H, et al. Awareness and
363 management of elevated blood pressure among human immunodeficiency virus-infected adults
364 receiving antiretroviral therapy in urban Zambia: a call to action. Glob Health Action.
365 2017;10(1):1359923.

366 24. Rush KL, Goma FM, Barker JA, Ollivier RA, Ferrier MS, Singini D. Hypertension prevalence and risk
367 factors in rural and urban Zambian adults in western province: a cross-sectional study. Pan Afr
368 Med J. 2018;30:97.

369 25. Mulenga D, Siziya S, Rudatsikira E, Mukonka VM, Babaniyi O, Songolo P, et al. District specific
370 correlates for hypertension in Kaoma and Kasama rural districts of Zambia. Rural Remote Health.
371 2013;13(3):2345.

372 26. Goma FM, Nzala SH, Babaniyi O, Songolo P, Zyaambo C, Rudatsikira E, et al. Prevalence of
373 hypertension and its correlates in Lusaka urban district of Zambia : a population based survey. Int

374 Arch Med [Internet]. 2011;4(1):34. Available from: <http://www.intarchmed.com/content/4/1/34>

375 27. Unger T, Borghi C, Charchar F, Khan NA, Poulter NR, Prabhakaran D, et al. 2020 International
376 Society of Hypertension Global Hypertension Practice Guidelines. Hypertension. 2020;75(6).

377 28. Stevenson M, Sergeant E, Nunes T, Heuer C, Marshall J, Sanchez J, et al. epiR: Tools for the
378 Analysis of Epidemiological Data [Internet]. 2021. Available from: [https://cran.r-](https://cran.r-project.org/package=epiR)
379 [project.org/package=epiR](https://cran.r-project.org/package=epiR)

380 29. Nutakki A, Chomba M, Chishimba L, Zimba S, Gottesman RF, Bahouth MN, et al. Risk factors and
381 outcomes of hospitalized stroke patients in Lusaka, Zambia. J Neurol Sci. 2021 May;424:117404.

382 30. Kapombe P, Cheelo M, Kamalanga K, Tally L, Stoops E, Mwango C, et al. Most common causes of
383 death in Zambia by HIV status, 2020-2021. In: AIDS 2022. Montreal, Canada; 2022.

384 31. Muddu M, Tusubira AK, Sharma SK, Akiteng AR, Ssinabulya I, Schwartz JI. Integrated
385 Hypertension and HIV Care Cascades in an HIV Treatment Program in Eastern Uganda: A
386 Retrospective Cohort Study. J Acquir Immune Defic Syndr. 2019 Aug;81(5):552–61.

387 32. Heller DJ, Balzer LB, Kazi D, Charlebois ED, Kwarisiima D, Mwangwa F, et al. Hypertension testing
388 and treatment in Uganda and Kenya through the SEARCH study: An implementation fidelity and
389 outcome evaluation. PLoS One. 2020;15(1):e0222801.

390 33. Hickey MD, Ayieko J, Owaraganise A, Sim N, Balzer LB, Kabami J, et al. Effect of a patient-
391 centered hypertension delivery strategy on all-cause mortality: Secondary analysis of SEARCH, a
392 community-randomized trial in rural Kenya and Uganda. PLoS Med. 2021 Sep;18(9):e1003803.

393 34. Nduka CU, Stranges S, Sarki AM, Kimani PK, Uthman OA. Evidence of increased blood pressure
394 and hypertension risk among people living with HIV on antiretroviral therapy: a systematic
395 review with meta-analysis. J Hum Hypertens. 2016 Jun;30(6):355–62.

396 35. Lubega G, Mayanja B, Lutaakome J, Abaasa A, Thomson R, Lindan C. Prevalence and factors
397 associated with hypertension among people living with HIV/AIDS on antiretroviral therapy in

398 Uganda. *Pan Afr Med J.* 2021;38:216.

399 36. Seaberg EC, Muñoz A, Lu M, Detels R, Margolick JB, Riddler SA, et al. Association between highly
400 active antiretroviral therapy and hypertension in a large cohort of men followed from 1984 to
401 2003. *AIDS.* 2005 Jun;19(9):953–60.

402 37. van Zoest RA, Wit FW, Kooij KW, van der Valk M, Schouten J, Kootstra NA, et al. Higher
403 prevalence of hypertension in HIV-1-infected patients on combination antiretroviral therapy is
404 associated with changes in body composition and prior stavudine exposure. *Clin Infect Dis.*
405 2021;63(2).

406 38. Hamooya BM, Mulenga LB, Masenga SK, Fwemba I, Chirwa L, Siwingwa M, et al. Metabolic
407 syndrome in Zambian adults with human immunodeficiency virus on antiretroviral therapy:
408 Prevalence and associated factors. *Medicine (Baltimore).* 2021 Apr;100(14):e25236.

409 39. Phillips AN, Venter F, Havlir D, Pozniak A, Kuritzkes D, Wensing A, et al. Risks and benefits of
410 dolutegravir-based antiretroviral drug regimens in sub-Saharan Africa: a modelling study. *Lancet*
411 *HIV [Internet].* 2019 Feb 1;6(2):e116–27. Available from: [https://doi.org/10.1016/S2352-](https://doi.org/10.1016/S2352-3018(18)30317-5)
412 [3018\(18\)30317-5](https://doi.org/10.1016/S2352-3018(18)30317-5)

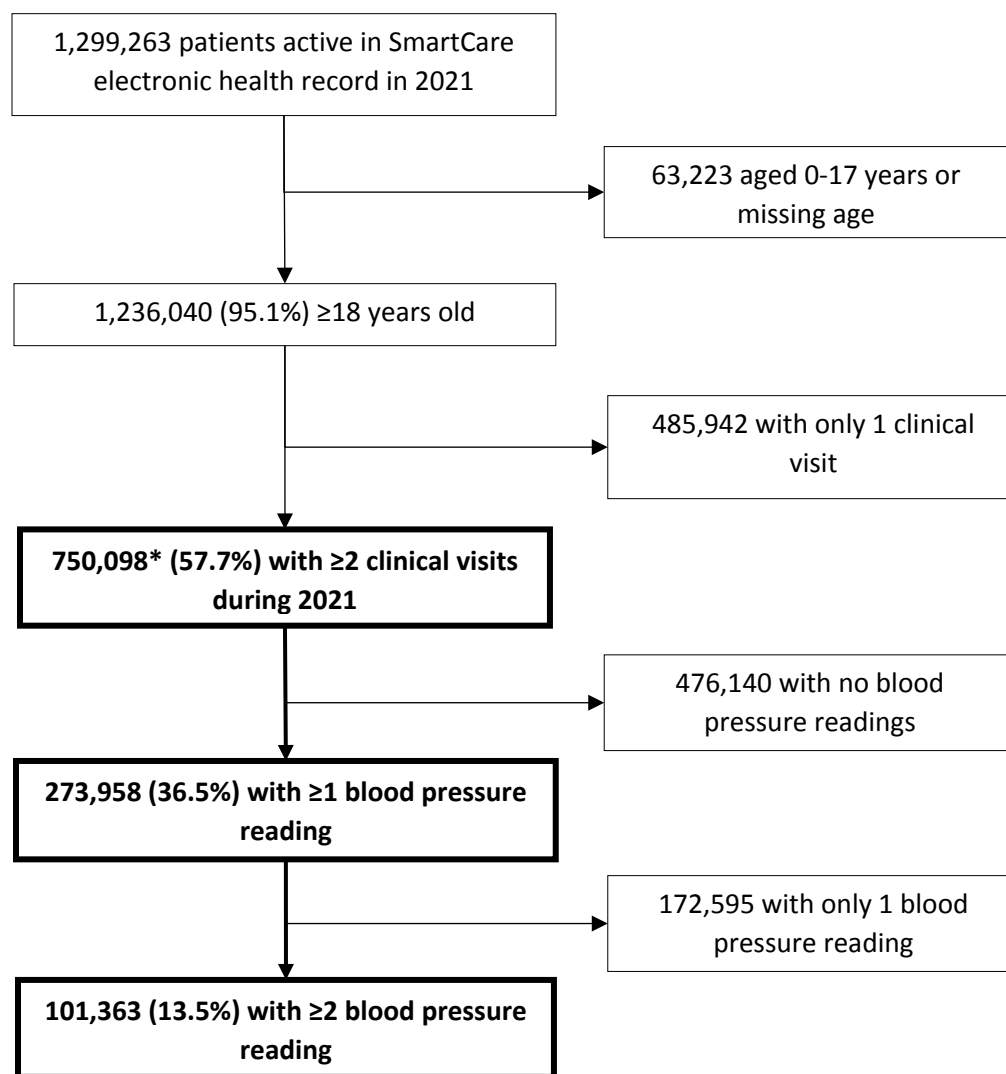
413 40. Appenheimer A Ben, Bokhour B, McInnes DK, Richardson KK, Thurman AL, Beck BF, et al. Should
414 Human Immunodeficiency Virus Specialty Clinics Treat Patients With Hypertension or Refer to
415 Primary Care? An Analysis of Treatment Outcomes. *Open forum Infect Dis.* 2017;4(1):ofx005.

416 41. Hoang T, Goetz MB, Yano EM, Rossman B, Anaya HD, Knapp H, et al. The impact of integrated HIV
417 care on patient health outcomes. *Med Care.* 2009 May;47(5):560–7.

418 42. Topp SM, Chipukuma JM, Chiko MM, Matongo E, Bolton-Moore C, Reid SE. Integrating HIV
419 treatment with primary care outpatient services: Opportunities and challenges from a scaled-up
420 model in Zambia. *Health Policy Plan.* 2013;28(4).

421 43. Kimera ID, Namugenyi C, Schwartz JI, Musimbaggio DJ, Ssenyonjo R, Atukunda P, et al. Integrated

422 multi-month dispensing of antihypertensive and antiretroviral therapy to sustain hypertension
423 and HIV control. J Hum Hypertens. 2022 Mar;1–7.
424
425



Figures and Tables

Figure 1. Sample size flow diagram for analysis of persons living with HIV with hypertension in Zambia, 2021

* This is the population which was eligible for inclusion in the analysis

Table 1. Comparison of the variable distribution and completeness in the entire and analytic datasets for hypertension among persons living with HIV — Zambia, 2021

Variable	Entire dataset, n (%) (N=1,236,040)	Analytic dataset, n (%) (N=101,363)	p-value
<i>Sex</i>			
Female	781,829 (63.3)	65,570 (64.7)	<0.01
Male	454,211 (36.7)	35,793 (35.3)	
<i>Age group</i>			
18-29 years	232,099 (18.8)	16,191 (16.0)	<0.01
30-44 years	585,455 (47.4)	45,850 (45.2)	
45-59 years	350,092 (28.3)	32,681 (32.2)	
≥60 years	68,394 (5.5)	6,641 (6.6)	
<i>Province</i>			
Central	125,704 (10.2)	2,813 (2.8)	<0.01
Copperbelt	238,609 (19.3)	7,197 (7.1)	
Eastern	105,595 (8.5)	3,672 (3.6)	
Luapula	55,168 (4.5)	54.0 (0.1)	
Lusaka	343,981 (27.8)	45,414 (44.8)	
Muchinga	32,978 (2.7)	512 (0.5)	
Northern	52,014 (4.2)	58.0 (0.1)	
Northwestern	36,016 (2.9)	1,893 (1.9)	
Southern	128,299 (10.4)	35,082 (34.6)	
Western	91,156 (7.4)	4,120 (4.1)	
Missing	26,520 (2.1)	548 (0.5)	
<i>Urban/rural designation</i>			
Rural	387,472 (31.3)	18,454 (18.2)	<0.01
Urban	736,921 (59.6)	78,123 (77.1)	
Missing	111,647 (9.0)	4,786 (4.7)	
<i>Years on ART</i>			
0-1	340,014 (27.5)	19,087 (18.8)	<0.01
2-4	419,400 (33.9)	28,182 (27.8)	
5-9	301,575 (24.4)	32,408 (32.0)	
≥10	175,051 (14.2)	21,686 (21.4)	
<i>Current ART regimen</i>			
Efavirenz-based	49,083 (4.0)	1,423 (1.4)	<0.01
Dolutegravir-based	1,137,837 (92.1)	97,049 (95.7)	
Both efavirenz and dolutegravir listed	3,291 (0.3)	133 (0.1)	
Other	45,829 (3.7)	2,758 (2.7)	
<i>Most recent ART prescription length</i>			
<3 months	141,776 (11.5)	6,275 (6.2)	<0.01
3-5 months	373,549 (30.2)	27,839 (27.5)	
6+ months	720,706 (58.3)	67,249 (66.3)	

Missing	9.00 (0.0)	0 (0.0)	
<i>Body mass index (kg/m²)</i>			
Normal (18.5-24.9)	336,236 (27.2)	51,056 (50.4)	<0.01
Low (<18.5)	59,860 (4.8)	8,776 (8.7)	
Overweight (25.0-29.9)	107,253 (8.7)	19,668 (19.4)	
Obesity (≥30.0)	53,674 (4.3)	10,585 (10.4)	
Missing	679,017 (54.9)	11,278 (11.1)	
<i>Initial CD4+ count (cells/mm³)</i>			
0-200	62,431 (5.1)	7,694 (7.6)	<0.01
201-350	61,544 (5.0)	7,195 (7.1)	
>350	107,473 (8.7)	12,847 (12.7)	
Missing	100,4592 (81.3)	73,627 (72.6)	
<i>Most recent CD4+ count (cells/mm³)*</i>			
0-200	59,590 (4.8)	6,994 (6.9)	<0.01
201-350	101,297 (8.2)	12,567 (12.4)	
>350	369,859 (29.9)	49,690 (49.0)	
Missing	705,294 (57.1)	32,112 (31.7)	
<i>Most recent viral load (copies/mL)[†]</i>			
<1000	975,952 (79.0)	92,115 (90.9)	<0.01
1,000-9,999	16,881 (1.4)	1,494 (1.5)	
≥10,000	26,338 (2.1)	2,595 (2.6)	
Missing	216,869 (17.5)	5,159 (5.1)	
<i>Most recent creatinine[‡]</i>			
Normal	36,457 (2.9)	8,892 (8.8)	<0.01
High	5,829 (0.5)	1,254 (1.2)	
Missing	119,3754 (96.6)	91,217 (90.0)	
<i>Data capture at point-of-care</i>			
Paper-based with retrospective input	495,498 (40.1)	73,406 (72.4)	<0.01
Direct electronic input	552,109 (44.7)	17,197 (17.0)	
Missing	188,433 (15.2)	10,760 (10.6)	
Variables are based on data from the most recent patient interaction in the electronic health record			
* 38.9% of recent CD4+ count measurements were from 2020 or 2021			
† 98.4% of recent viral load measurements were from 2020 or 2021			
‡ Elevated creatinine defined as ≥115 µmol/L in men and ≥98 µmol/L in women			
ART: antiretroviral therapy			

438

439

440 *Table 2. Hypertension prevalence and odds ratios of hypertension among persons living with HIV —*
441 *Zambia, 2021 (N=101,363)**

	Prevalence, %	OR (95% CI)	aOR (95% CI) [†]
<i>Overall</i>	14.7		
<i>Sex</i>			
Female	13.7	Referent	Referent
Male	16.4	1.23 (1.19-1.28)	1 (0.96-1.04)
<i>Age group</i>			
18-29 years	4.3	Referent	Referent
30-44 years	10.1	2.53 (2.33-2.75)	2.61 (2.39-2.85)
45-59 years	21.6	6.19 (5.71-6.71)	6.36 (5.81-6.96)
≥60 years	37.4	13.42 (12.26-14.7)	14.54 (13.14-16.09)
<i>Province</i>			
Central	11.8	Referent	Referent
Copperbelt	18.1	1.65 (1.45-1.88)	1.25 (1.08-1.44)
Eastern	10.3	0.87 (0.74-1.01)	0.62 (0.5-0.78)
Luapula	5.6	0.44 (0.14-1.42)	0.4 (0.09-1.67)
Lusaka	15.4	1.37 (1.22-1.54)	1.11 (0.97-1.26)
Muchinga	3.7	0.29 (0.18-0.46)	0.37 (0.21-0.63)
Northern	10.3	0.87 (0.37-2.03)	1.23 (0.42-3.58)
Northwestern	12.4	1.06 (0.88-1.26)	0.92 (0.76-1.11)
Southern	14.6	1.28 (1.14-1.44)	0.97 (0.85-1.1)
Western	8.9	0.73 (0.62-0.85)	0.78 (0.66-0.92)
<i>Urban/rural designation</i>			
Rural	9.0	Referent	Referent
Urban	16.0	1.92 (1.82-2.03)	1.93 (1.81-2.05)
<i>Years on ART</i>			
0-1	10.8	Referent	Referent
2-4	12.8	1.21 (1.14-1.28)	1.04 (0.97-1.11)
5-9	15.0	1.46 (1.38-1.54)	1.02 (0.95-1.08)
≥10	20.1	2.09 (1.97-2.21)	1.07 (1.00-1.14)
<i>ART regimen[‡]</i>			
Efavirenz-based	11.5	Referent	Referent
Dolutegravir-based	14.8	1.33 (1.13-1.57)	1.15 (0.96-1.38)
Other	13.7	1.22 (1.00-1.48)	1.00 (0.80-1.24)
<i>Most recent ART prescription length</i>			
<3 months	11.3	Referent	Referent
3-5 months	12.6	1.14 (1.04-1.24)	0.98 (0.89-1.09)
≥6 months	15.9	1.48 (1.36-1.60)	1.11 (1.01-1.22)
<i>Body mass index (kg/m²)</i>			
Normal (18.5-24.9)	11.6	Referent	
Low (<18.5)	8.6	0.72 (0.66-0.78)	
Overweight (25-29.9)	19.9	1.9 (1.82-1.99)	

Obesity (≥ 30.0)	28.7	3.08 (2.93-3.24)	
<i>Initial CD4+ count (cells/mm³)</i>			
0-200	15.2	Referent	
201-350	15.0	0.98 (0.9-1.07)	
>350	13.6	0.87 (0.81-0.95)	
<i>Most recent CD4+ count (cells/mm³)</i>			
0-200	15.2	Referent	
201-350	17.0	1.15 (1.06-1.24)	
>350	16.2	1.09 (1.01-1.16)	
<i>Most recent viral load count (copies/mL)</i>			
<1000	15.1	Referent	Referent
1,000-9,999	11.5	0.73 (0.62-0.86)	0.96 (0.81-1.14)
$\geq 10,000$	10.9	0.69 (0.61-0.78)	1.02 (0.89-1.17)
<i>Most recent creatinine [¶]</i>			
Normal creatinine	17.3	Referent	
Elevated creatinine	28.1	1.88 (1.64-2.15)	
* Hypertension defined as ≥ 2 systolic blood pressure readings of ≥ 140 mmHg or ≥ 2 diastolic blood pressure readings of ≥ 90 mmHg among persons with ≥ 2 clinical visits during 2021			
† Adjusted for sex, age group, province, urban/rural designation, ART regimen, years on ART, script length, and body mass index			
‡ The most recently listed ART regimen in SmartCare electronic health record. If a regimen listed both dolutegravir and efavirenz, then it was excluded from the analysis (n= 128)			
¶ Elevated creatinine defined as ≥ 115 $\mu\text{mol/L}$ in men and ≥ 98 $\mu\text{mol/L}$ in women, corresponding to glomerular filtration rate of < 60 mL/min/1.73m ²			
aOR: adjusted odds ratio; ART: antiretroviral therapy; CI: confidence interval; OR: odds ratio			

443 *Table 3. Prevalence and odds ratios of elevated creatine among persons living with HIV — Zambia, 2021*
 444 *(N=10,146)**

	Prevalence, %	OR (95% CI)	aOR (95% CI) [†]
Overall	12.4		
Blood pressure			
Not hypertensive [‡]	10.9	Referent	Referent
Hypertensive [‡]	18.7	1.88 (1.64-2.15)	1.36 (1.18-1.57)
Sex			
Female	11.1	Referent	Referent
Male	14.4	1.35 (1.2-1.52)	1.19 (1.06-1.35)
Age Group			
18-29 years	4.8	Referent	Referent
30-44 years	10.2	2.28 (1.8-2.89)	2.21 (1.75-2.81)
45-59 years	15.7	3.72 (2.95-4.69)	3.38 (2.67-4.28)
≥60 years	27.0	7.42 (5.69-9.68)	6.37 (4.85-8.37)

* Elevated creatinine defined as ≥115 μmol/L in men and ≥98 μmol/L in women, corresponding to glomerular filtration rate of <60 mL/min/1.73m²

[†] Adjusted for presence/absence of hypertension, sex, and age group

[‡] Hypertension defined as as having ≥2 systolic blood pressure readings of ≥140 mmHg or ≥2 diastolic blood pressure readings of ≥90 mmHg during the study period

aOR: adjusted odds ratio; CI: confidence interval; OR: odds ratio

445