

1 Research article: Instrumental and Laboratory Changes in Post-Myocardial Infarction
2 Prognosis: A Cross-Sectional Analysis

3 Running title: Current Advances in Cardiopathologies Management

4
5 Authors' list: Basheer Abdullah Marzoog^{1,*}, Natalia Igorevna Bloshkina², Vera
6 Sergeevna Gromova³, Irina Andreevna Bakarova⁴, Natalia Rudolfovna Chemekova²,
7 Elena Ivanovna Gorshinina²

8
9 ¹ World-Class Research Center «Digital Biodesign and Personalized Healthcare», I.M.
10 Sechenov First Moscow State Medical University (Sechenov University), 119991 Moscow,
11 Russia; postal address: Russia, Moscow, 8-2 Trubetskaya street, 119991.

12 ² National Research Mordovia State University. Address: Bolshevitskaya Street, 68, Saransk,
13 Rep. Mordovia, Russia. Postal address: Russia, Mordovia republic, Saransk, Bolshevitskaya
14 Street, 31, 430005.

15 ³ Immanuel Kant Baltic Federal University, Russia, Kaliningrad, Alexander Nevsky Street,
16 14. ORCID 0000-0002-8707-8876

17 ⁴ I.M. Sechenov First Moscow State Medical University (Sechenov University), 119991
18 Moscow, Russia; postal address: Russia, Moscow, 8-2 Trubetskaya street, 119991. ORCID
19 0009-0007-5333-4935

20 *Corresponding author: Basheer Abdullah Marzoog, Ph.D. student at Sechenov First Moscow
21 State Medical University at the World-Class Research Center "Digital biodesign and
22 personalized healthcare". (marzug@mail.ru, +79969602820). Address: Russia, Moscow, 8-2
23 Trubetskaya street, 119991. Postal address: Russia, Moscow, 8-2 Trubetskaya street, 119991.
24 ORCID: 0000-0001-5507-2413, Scopus ID: 57486338800

25 Competing interests: No competing interests regarding the publication.

26
27 All authors read and approved the final version of the manuscript

28
29
30
31
32
33
34

35 Abstract

36 **Background:** Cardiovascular events continue to be a leading cause of death worldwide.

37 **Aims:** To evaluate the early laboratory and instrumental changes in a systematic manner in
38 patients who experienced a recent myocardial infarction (MI).

39 **Objectives:** To study patients with myocardial infarction occurring within 30 days prior to
40 hospitalization in a rehabilitation hospital.

41 **Materials and methods:** A large-scale retrospective cohort sectional study was conducted
42 from 2014 to 2019, using data collected from Mordovia Rehabilitation Hospital. The study
43 included 154 patients, with analysis of 76 parameters for each patient. Statistical analysis was
44 performed using the Statistica program, employing t-tests, Pearson's correlation coefficient,
45 and ROC tests.

46 **Results:** The sample consisted of 154 patients with a history of recent myocardial infarction.
47 Of the total, 51 (33.11%) were female and 103 (66.88%) were male. Among the patients, 42
48 (27.27%) had chronic heart failure (CHF), while 101 (65.58%) did not, and 11 (7.142%) had
49 missing data. Diabetes mellitus (DM) was observed in 28 (18.18%), with 118 (76.62%)
50 without DM. Hypertension was present in 118 (76.62%), while 28 (18.18%) did not have
51 hypertension. Chronic kidney disease (CKD) was seen in 11 (7.14%), with 131 (85.064%)
52 not having CKD. Chronic obstructive pulmonary disease (COPD) was present in 14 (9.09%),
53 while 132 (85.71%) did not have COPD. Post-myocardial infarction (MI) CHF was observed
54 in 108 (70.13%), with 42 (27.27%) not having CHF. Post-MI arrhythmia was seen in 50
55 (32.47%) patients, while 99 (64.28%) did not have arrhythmia. Early post-MI complications,
56 such as aneurysm, were present in 12 (7.79%), with 138 (89.61%) not having aneurysm.
57 Dressler syndrome (pericarditis) was seen in 4 (2.59%) patients, pneumonitis in 1 (0.64%),
58 and pleuritis was not observed.

59 **Conclusions:** Systemic manifestations of myocardial infarction include kidney function
60 impairment or the development of new kidney disease. These changes involve an increase in
61 aorta basement diameter, right ventricle enlargement, decrease in serum red blood cell levels,
62 serum potassium and calcium levels, and an increase in serum myoglobin. Elevated
63 myoglobin levels are associated with the development of chronic heart failure. Higher
64 creatinine levels and/or LDH are linked to the occurrence of arrhythmia. Hypertension is the
65 predominant comorbid condition in MI patients, and arrhythmia is the most commonly
66 reported post-MI complication.

67 **Other findings:** Females are more susceptible to post-MI urinary tract infections.

Keywords: Myocardial infarction, Cardiology, Myocardopathies, Myocardiocyte, Angiogenesis & Regeneration

Introduction

Myocardial infarction (MI) and associated sequelae remain the most reported cause of mortality and morbidity worldwide [1]. The development of cardiovascular events is associated with several modified and non-modified risk factors [2]. Lifestyle changes have a huge impact on the overall health of the cardiovascular system [3, 4]. Unfortunately, sedentary lifestyle is seen in majority of myocardial infarction, which is associated with development of several predisposition factors for cardiovascular events such as dyslipidaemia, insulin resistance, and central obesity or visceral obesity [5–9]. Collectively, these early signs of disturbance of cardiovascular homeostasis are ignored to provoke the progression of dyslipidaemia and insulin resistance to reach enough levels to induce the emergence of cardiovascular events such as MI [10, 11].

Assessment of the early post-MI changes is of huge impact on the further therapy plan and the prognosis of MI victims. One of the early specific markers of myocardial infarction is the elevation of cardiac lactate dehydrogenase 1 and troponins, including troponins I and T. However, systemic changes are rarely assessed in early post-MI patients [12]. The role of these changes is unclear in determining the prognosis of patients with MI and the potential risk of developing complications such as renal failure. In the current retrospective analysis, we covered the potential role of these systemic and the regularly checked cardiac markers in the prognosis determination and prognosis of the patients [5, 8, 20–23, 9, 13–19].

Materials and methods

A retrospective cohort analysis for 154 patients for the period 2014-2019. The data was collected from the republican rehabilitation hospital (history of the patients from the other hospitals are collected in the rehabilitation hospital, that is why we collected the data from her). All the presented data are after first contact with the patient and shows the peak values of post MI changes. Consent from patients has been taken for the collection, analysis, and publication the material and any associated photos or graphs. The missing data treated as absent and removed from the analysis. All measurement units are based on the local units used in the laboratories. There was no access to the 2020–2022 year data because of the COVID-19 pandemic. Pleuritis was not seen in patients and been excluded from the

complications report. The results of the presented t-test are all statistically significant, and other results are not statistically significant at $p < 0.05$. The level of leukocytes and red blood cell level is always mentioned without $\times 10^9$ or $\times 10^{12}$, respectively. We could not assess the risk hazard for the estimated parameters and the survival rate, limitations of the study.

The T test, the Pearson correlation coefficient and ROC analysis have been used using the Statistica 12 programme (StatSoft, Inc. (2014). STATISTICA (data analysis software system), version 12. www.statsoft.com).

Results

The sample consisted of 154 patients with a history of recent myocardial infarction. Out of the total, 51 (33.11%) were female and 103 (66.88%) were male. Among the patients, 131 (85.064%) lived in the city, 17 (11.038%) lived in the village, and 5 (3.24%) lived in the town.

A majority of the patients had a concomitant disease prior to their myocardial infarction. Of these, 132 (85.71%) had a concomitant disease, 18 (11.68%) did not have a concomitant disease, and 4 (2.59%) had missing data. Among the concomitant diseases, chronic heart failure (CHF) was observed in 42 (27.27%) patients, while 101 (65.58%) did not have CHF, and 11 (7.14%) had missing data. Diabetes mellitus (DM) was observed in 28 (18.18%), with 118 (76.62%) without DM, and 8 (5.19%) having missing data. Hypertension was present in 118 (76.62%), while 28 (18.18%) did not have hypertension, and 8 (5.19%) had missing data. Chronic kidney disease (CKD) was observed in 11 (7.14%) patients, with 131 (85.064%) not having CKD, and 12 (7.79%) having missing data. Chronic obstructive lung disease (COPD) existed in 14 (9.09%), while 132 (85.71%) did not have COPD, and 8 (5.19%) had missing data. Disrupted lipid profile was present in 21 (13.63%), while 121 (78.57%) did not have dyslipidemia, and 12 (7.79%) had missing data. Varicose veins were observed in 3 (1.94%), while 137 (88.96%) did not have varicose veins, and 14 (9.09%) had missing data.

In terms of complications after myocardial infarction, 145 (94.15%) patients experienced a complication, 5 (3.24%) did not have a complication, and 4 (2.59%) had missing data. Post-myocardial infarction (MI) chronic heart failure (CHF) was observed in 108 (70.12%) patients, while 42 (27.27%) did not have CHF, and 4 (2.59%) had missing data. Post-MI arrhythmia was seen in 50 (32.47%) patients, while 99 (64.28%) did not have arrhythmia, and 5 (3.24%) had missing data. Early post-MI complications, such as aneurysm, were observed in 12 (7.79%) patients, while 138 (89.61%) did not have aneurysm, and 4 (2.59%) had

missing data. Late post-MI complications, including Dressler syndrome with pericarditis, were seen in 4 (2.59%) patients, while 146 (94.80%) did not have pericarditis, and 4 (2.59%) had missing data. Pneumonitis, another component of Dressler syndrome, was observed in 1 (0.64%) patient, while 148 (96.10%) did not have pneumonitis, and 5 (3.24%) had missing data. Notably, pleuritis, the third component of Dressler syndrome, was not observed and therefore not reported.

Interestingly, 43 (27.92%) patients experienced a re-infarct, while 107 (69.48%) had their first infarction, and 4 (2.59%) had missing data. Evaluation of tissue-type plasminogen activator (t-PA) activity level through serum measurement showed elevated levels in 7 (4.54%) patients, normal levels in 5 (3.24%), and 142 (92.20%) patients did not have their d-dimer level measured.

The primary descriptive statistics demonstrated in (*Table 1*).

Table 1: The primary descriptive statistics of the sample. Abbreviations: EF; ejection fraction, EDV; end diastolic volume, LV; left ventricle, LA; left atrium, RV; right ventricle, RA; right atrium, Hb; hemoglobin, RBC; red blood cell, ESR; erythrocyte sedimentation rate of erythrocytes, CKP-MB; creatinine phosphokinase-MB fraction, LDH; lactate dehydrogenase, ALT; alanine transaminase, AST; aspartate transaminase, LDL; low density lipoprotein, TAG; triacyl glycerides, APTT; activated prothrombin time, PT; prothrombin time.

Variable	Descriptive Statistics					
	Valid N	% Valid obs.	Mean	Median	Minimum	Maximum
Hospitalization days	153	99.35	14.53	15.0	0.00	24
Age (years)	152	98.70	61.64	62.5	30.00	86
Body weight (Kg)	31	20.12	82.26	85.000	62.00	112
Height (cm)	31	20.12	170.58	172.00	155.0	185
BMI (Kg/m ²)	31	20.12	28.56	27.88	21.79	41
HR (beat/mint)	148	96.10	79.82	78.00	53.00	130
SBP (mmHg)	148	96.10	139.57	140.00	60.00	260
DBP (mmHg)	148	96.10	84.05	80.00	40.00	130
Aorta diameter at the Valsalva sinuses (mm)	144	93.50	35.21	35.00	20.00	46

Variable	Descriptive Statistics					
	Valid N	% Valid obs.	Mean	Median	Minimum	Maximum
EF (%)	142	92.20	54.55	55.000	25.00	80
EDV of the LV (ml)	113	73.37	134.30	129.00	62.00	234
End diastolic size of the LV (mm)	132	85.71	52.35	51.150	10.00	89
End diastolic size of the LA (mm)	133	86.36	40.09	40.00	28.00	62
End diastolic size of the RV (mm)	144	93.50	26.75	26.25	5.00	44
End diastolic size of the RA (mm)	130	84.41	35.73	36.00	24.00	49
Hb	143	92.85	137.10	138.0	85.00	170
Leukocytes (/L)	141	91.55	8.82	8.30	2.80	18
RBC (/L)	118	76.62	5.12	4.50	2.60	24
Lymphocytes (%)	130	84.41	25.51	25.50	2.00	54
Thrombocytes (/L)	111	72.07	206.76	200.00	83.00	506
ESR (mm/hr)	138	89.61	19.04	15.50	2.00	60
Urine ketones (mmol/l)	1	0.64	0.50	0.50	0.50	1
Urine proteins (mmol/l)	137	88.96	5.27	0.00	0.00	150
Urine leukocytes (microscopically)	142	92.20	2.64	1.00	0.00	50
Urine epithelial cells (microscopically)	136	88.31	1.86	1.000	0.00	20
Troponin I (ng/ml)	126	81.81	4.74	1.20	0.00	33
Myoglobin (ng/ml)	3	1.94	111.30	71.0	63.00	200
CKP-MB 1 (U/l)	129	83.76	97.01	29.0	6.00	2881
CKP-MB 2 (U/l)	71	46.10	79.26	42.0	6.00	508

Variable	Descriptive Statistics					
	Valid N	% Valid obs.	Mean	Median	Minimum	Maximum
LDH 1 (U/l)	108	70.12	652.30	475.5	30.00	3900
LDH 2 (U/l)	56	36.36	21640.80	492.0	97.00	1177
INR (Sec)	125	81.16	1.25	1.00	0.80	18
Total bilirubin (mmol/l)	108	70.12	16.53	17.68	4.42	36
ALT (mmol/l)	140	90.90	42.65	28.00	1.19	361
AST (mmol/l)	140	90.90	55.57	30.00	5.10	423
Total cholesterol (mmol/l)	141	91.55	5.23	5.10	2.40	9
LDL (mmol/l)	138	89.61	23.20	3.24	0.92	2766
TAG (mmol/l)	140	90.90	3.65	1.56	0.27	138
Na (mmol/l)	122	79.22	139.76	142.75	1.76	151
K (mmol/l)	126	81.81	6.02	4.06	1.00	92
Creatinine (μmol/L)	142	92.20	81.56	84.00	0.00	176
Ca (mmol/l)	115	74.67	1.69	1.18	0.25	38
Urea (mmol/l)	139	90.25	7.79	6.70	2.50	93
Glucose (mmol/l)	135	87.66	6.86	6.10	4.00	19
APTT (Sec)	74	48.05	27.31	25.50	15.00	76
Fibrinogen (ng/ml)	117	75.97	3386.85	3500.00	300.00	7500
PT (Sec)	1	0.64	94.00	94.00	94.00	94

155

156 Males are affected by myocardial infarction earlier than females; the age cut-off point is 67
157 years old. (*Figure 1*)

158 The mean age in the male group was 59.76 years, while in the female group it was 65.46
159 years. This difference was statistically significant, with a t-value of 3.30 ($p < 0.001$). Similarly,
160 the mean height of males was 172.57 cm, whereas in females it was 164.88 cm, showing a
161 statistically significant difference with a t-value of -3.26 ($p < 0.002$). The mean diameter of the
162 aorta on echocardiogram was 36.23 mm in males and 33.04 mm in females, which also
163 exhibited a statistically significant difference with a t-value of -4.24 ($p < 0.00003$). Regarding
164 right atrium size, the mean in males was 36.26 mm, compared to 34.56 mm in females,

showing a statistically significant difference with a t-value of -2.06 ($p < 0.04$). Hemoglobin levels in men had a mean of 140.26, while in women it was 130.66, demonstrating a statistically significant difference with a t-value of -3.71 ($p < 0.0002$).

In urine analysis, the mean number of leukocytes under microscope in the male group was 1.52, whereas in the female group it was 4.91, with a statistically significant difference and a t-value of 3.11 ($p < 0.002$). Additionally, the number of epithelial cells in the male group was 1.36, compared to 2.91 in the female group, showing a statistically significant difference with a t-value of 3.12 ($p < 0.002$). The mean myoglobin level in males was 67.00 ng/ml, while in females it was 199.90 ng/ml, which exhibited a highly significant difference with a t-value of 19.18 ($p < 0.03$). (Table 2)

Table 2: Gender role in the numerical variables.

Variable	T-tests; Grouping: Gender						
	Group 1: F Group 2: M						
	Mean F	Mean M	t-value	df	p	Valid N F	Valid N M
Hospitalization days	14,42	14,58	-0,26	151	0,78	50	103
Age	65,46	59,76	3,30	150	0,001	50	102
Body weight	83,38	81,87	0,30	29	0,75	8	23
Height	164,88	172,57	-3,26	29	0,002	8	23
BMI	31,20	27,48	1,94	29	0,06	9	22
HR	80,08	79,70	0,13	146	0,89	49	99
SBP	144,18	137,29	1,39	146	0,16	49	99
DBP	85,71	83,23	1,10	146	0,27	49	99
Aorta diameter at Valsalva Sinus	33,04	36,23	-4,24	142	0,00003	46	98
EF	55,27	54,22	0,62	140	0,53	45	97
EDV	128,08	137,33	-1,30	111	0,19	37	76
LV	51,76	52,65	-0,62	130	0,53	44	88
LA	40,16	40,06	0,09	131	0,92	41	92
RV	26,20	27,01	-0,98	142	0,32	46	98
RA	34,56	36,26	-2,06	128	0,040	40	90
Hb	130,66	140,26	-3,71	141	0,00029	47	96
Leukocytes	8,40	9,02	-1,16	139	0,24	45	96
RBC	4,80	5,28	-0,81	116	0,41	40	78
Lymphocytes	27,62	24,50	1,77	128	0,07	42	88
Thrombocytes	193,69	213,83	-1,54	109	0,12	39	72
ESR	21,52	17,88	1,53	136	0,12	44	94
Urine proteins	4,05	5,85	-0,43	135	0,6	44	93
leukocytes	4,91	1,52	3,11	140	0,002	47	95
Epithelial cells	2,91	1,36	3,12	134	0,002	44	92

Variable	T-tests; Grouping: Gender						
	Group 1: F			Group 2: M			
	Mean F	Mean M	t-value	df	p	Valid N F	Valid N M
Troponin I	3,39	5,34	-1,23	124	0,21	39	87
Myoglobin	199,90	67,00	19,18	1	0,033	1	2
CKP-MB	94,57	98,14	-0,06	127	0,94	41	88
LDH	630,78	661,36	-0,25	106	0,79	32	76
INR	1,01	1,36	-1,16	123	0,24	39	86
Total bilirubin	15,96	16,80	-0,61	106	0,53	35	73
ALT	51,77	38,33	1,59	138	0,11	45	95
AST	57,66	54,58	0,28	138	0,77	45	95
Total choles	5,42	5,14	1,138	139	0,25	45	96
LDL	3,30	3,12	0,90	136	0,36	43	95
TAG	1,88	1,67	1,24	138	0,21	45	95
Na	141,81	138,90	0,78	120	0,43	36	86
K	3,87	6,95	-1,20	124	0,23	38	88
Creatinine	81,23	81,72	-0,09	140	0,92	45	97
Ca	1,53	1,76	-0,31	113	0,75	36	79
Urea	7,15	8,10	-0,54	137	0,58	45	94
Glucose	7,12	6,74	0,79	133	0,42	43	92
APTT	25,82	27,94	-0,93	72	0,35	22	52
Fibrinogen	3490,73	3346,04	0,86	115	0,39	33	84

177

178 Patients with concomitant diseases have a mean heart rate (HR) equal to 80.82 beats / minute
179 and patients without concomitant disease have a mean HR equal to 72.39 beats / minute,
180 which is a statistically significant difference, t value 2.05, $p < 0.04$. Furthermore, patients with
181 concomitant diseases have a mean diastolic size of the right ventricle of 27.13 mm and
182 patients without concomitant disease have a mean diastolic size of the right ventricle is 23.85
183 mm, which is a statistically significant difference, t value 2.79, $p < 0.005$. Moreover, patients
184 with concomitant disease have a mean protein in urine 3.18 mg/l, and the patients without
185 concomitant disease had a mean level of urine protein 21.25 mg/l, which is statistically
186 significant difference, t value -3.10, $p < 0.002$. Interestingly, patients with concomitant
187 disease had lower calcium level a mean equal to 1.31 mmol/l and the patients without
188 concomitant disease had a mean calcium level 3.84 mmol/l, which is statistically significant
189 difference, t value -2.67, $p < 0.008$. (Figure 2)
190 Patients with CHF have a mean thrombocyte level equal to 185.26 / l, while patients without
191 CHF have a mean thrombocyte level of 216.24 /l, which is a statistically significant
192 difference, t value - 2.15, $p < 0.03$.

Mean glucose level in diabetic patients equal to 9.93 mmol/l and in non-diabetic patients equal to 6.13 mmol/l, which is statistically significant difference, t value -7.97, $p < 0.0001$. The coexistence of DM in patients increases the mean diastolic size of the left ventricle 55.60 mm, while, in patients without DM, the mean diastolic size of the left ventricle equals 51.42 mm, which is a statistically significant difference, t value -2.53, $p < 0.012$. The mean sedimentation rate (ESR) in patients with DM equals 23.60 mm/hr, and equal to 17.43 mm/hr in non-diabetic patients, which is statistically significant difference, t value -2.22, $p < 0.027$. The mean creatinine phosphokinase-MB fraction is dramatically higher in patients with DM 233.36 U/L and lower in non-diabetic patients 66.05 U / L, which is a statistically significant difference, t value --2.62, $p < 0.009$. Diabetic patients experience a high level of triacyl glyceride (TAG) 2.17 mmol / l, while non-diabetic patients had a lower TAG level of 1.66 mmol/l, which is a statistically significant difference, t value -2.56, $p < 0.011$. Hypertensive patients have a low mean level of red blood cells (RBC) level 4.55 /l in compare to non-hypertensive patients 7.7, which is statistically significant difference, t value -4.63276, $p < 0.000010$. In hypertensive patients, the mean LDH 1 is 608.21 U/l, INR is 1.05, sodium is 141.70 mmol/l, potassium is 4.04 mmol/l, and calcium is 1.14 mmol/l, whereas, in non-hypertensive patients, the mean level of LDH 1 is 908.8 U/l, INR is 2.1, sodium is 130.6 mmol/l, potassium is 14.8 mmol/l, calcium is 3.9 mmol/l, which is statistically significant difference; t value -2.07, -3.04, 2.51, -3.62, -3.19; $p < 0.04, 0.0028, 0.013, 0.0004, 0.001$, respectively. CKD patients have a high mean troponin I level equal to 22.70 ng / ml compared to non-CKD patients 3.72 ng/ml, which is a statistically significant difference, t value -6.84, $p < 0.0001$. Also, CKD patients have higher mean level of CPK-MB fraction equal to 475.61 U/l in compare to non-CKD patients equal to 78.38 U/l, which is statistically significant difference, t value -3.63, $p < 0.0004$. The mean creatinine level is higher in patients with CKD at 109.81 $\mu\text{mol/L}$ comparing to non-CKD patients, which is a statistically significant difference, t value -3.63, $p < 0.0004$. Interestingly, patients with COPD have a mean diastolic size of the left ventricle of 48.46 mm, which is less than that of patients 52.73 mm, which is a statistically significant difference, t value 1.99, $p < 0.048$. However, patients with COPD have a mean diastolic size of the right atrium is 39.55 mm compared to patients 35.41 mm, which is a statistically significant difference, t value -3.06, $p < 0.002$. Furthermore, COPD patients have a mean level of RBC equal to 145.29 compared to non-COPD patients 136.39, which is a statistically significant difference, t value -2.11, $p < 0.03$.

Patients with dyslipidemia have mean troponin I 9.4 ng/ml, whereas, patients without dyslipidemia have mean troponin I 3.64 ng/ml, which is statistically significant difference, t value -2.99, $p < 0.003$. Additionally, patients with dyslipidemia have mean total bilirubin 19.3 mmol / l and 15.72 mmol/l in patients without dyslipidaemia, which is a statistically significant difference, t value -2.12, $p < 0.03$. Furthermore, patients with dyslipidaemia have a mean serum sodium level of 132.3 mmol/l and a mean serum potassium level of 8.4 mmol / l, while in patients without dyslipidaemia, the mean sodium serum level is 142.24 mmol/l and a mean serum potassium level of 4.07 mmol/l, which is a statistically significant difference; t value 2.74, -2.09; $p < 0.006, 0.03$.

The mean leukocytes level in patients with varicose veins is 12.07 /l, whereas, in patients without varicose veins, the mean leukocytes level is 8.71 /l, which is statistically significant difference; t value -1.99, $p < 0.04$. The mean RBC level in patients with varicose veins is 9.87 /l, whereas, in patients without varicose veins, the mean RBC level is 4.56 /l, which is statistically significant difference; t value -6.88, $p < 0.00$. The mean level of ESR in patients with varicose veins is 37.67 mm / h, while, in patients without varicose veins, the mean ESR level is 18.25 mm / h, which is statistically significant difference; t value -2.64, $p < 0.009$.

In terms of complications, patients with complications have been hospitalized for 14.65 days, whereas, patients without complications hospitalized for 11.40 days, which is statistically significant difference; t value 2.05, $p < 0.04$. In patients with complications, the mean aorta diameter 35.38 mm, whereas, in patients without complications, the mean aorta diameter 29.25 mm, which is statistically significant difference; t value 2.77, $p < 0.006$. In patients with complications, the mean diastolic size is of the right ventricle is 26.89 mm, while, in patients without complications, the mean diastolic size of the right ventricle 21.25mm, which is a statistically significant difference; t 2.44, $p < 0.01$. In patients with complications, the mean level of RBC 4.87 / l, while in patients without complications, the mean level of RBC 12.40 /l, which is a statistically significant difference; t value -5.37, $p < 0.0001$. In patients with complications, in the general urine analysis, microscopically, the mean level of urea proteins 4.30, while, in patients without complications, the mean level of urea proteins 50.00, which is a statistically significant difference; t -3.61, $p < 0.0004$. In patients with complications, the mean potassium level 5.37 mmol/l and mean calcium level 1.58 mmol/l, whereas, in patients without complications, the mean potassium level 32.99 mmol/l and mean calcium level is 5.99 mmol/l, which is statistically significant difference; t value -3.75, -2.05; $p < 0.0002, 0.04$, respectively.

Patients with post-MI CHF have mean myoglobin level 199.90 ng/ml, whereas, in patients without post-MI CHF, the mean myoglobin level 67.00 ng/ml, which is statistically significant difference; t value 19.18, $p < 0.033$.

Patients with a history of previous infarction have creatinine 90.48 $\mu\text{mol/l}$ in compare to patients without reinfarction 78.01 $\mu\text{mol/l}$, which is a statistically significant difference; t value 2.26, $p < 0.02$

The mean age of patients with arrhythmia is 65.58 years, while the mean age of patients without arrhythmia is 59.68 years, which is statistically significant difference; t value 3.32, $p < 0.001$. The mean height of patients with arrhythmia is 173.67 cm, while the mean height of patients without arrhythmia is a 168.61 cm, which is statistically significant difference; t value 2.23, $p < 0.03$. The mean ejection fraction (EF) of patients with arrhythmia is 50.40 %, while the mean EF of patients without arrhythmia is a 56.43 %, which is statistically significant difference; t -3.81, $p < 0.0002$. The mean diastolic size of the left atrium of patients with arrhythmia is 42.14 mm, while the mean diastolic size of the left atrium of patients without arrhythmia is 39.12 mm, which is statistically significant difference; t 3.00, $p < 0.003$. The mean diastolic size right atrium of patients with arrhythmia is 37.36 mm, whereas, the mean diastolic size of the right atrium of patients without arrhythmia is 34.95 mm, which is statistically significant difference; t value 2.96, $p < 0.003$. The mean CKP-MB of patients with arrhythmia is 181.82 U / l, while the mean CKP-MB of patients without arrhythmia is a 56.68 U/l, which is statistically significant difference; t 2.34, $p < 0.02$. The mean serum lactate dehydrogenase (LDH) level of patients with arrhythmia is 888.37 U/l, whereas, the mean lactate dehydrogenase level of patients without arrhythmia is a 533.49 U/l, which is statistically significant difference; t value 3.16, $p < 0.002$. The mean serum level of aspartate transaminase of patients with arrhythmia is 71.53 mmol / l, while the mean lactate dehydrogenase serum level of patients without arrhythmia is a 47.38 mmol/l, which is statistically significant difference; t value 2.23, $p < 0.026$.

The mean EF of patients with aneurysm is 43.00 %, whereas, the mean EF of patients without aneurysm is 55.59 %, which is statistically significant difference; t value 4.57, $p < 0.00001$.

The mean level in patients with aneurysm is 9.70 / l, while the mean level of patients without aneurysm is a 2.11 /l, which is statistically significant difference; t -3.83, $p < 0.0001$. The mean epithelial cell level in general urine analysis in patients with aneurysm is 5.40, whereas, the mean epithelial cell level in patients without aneurysm is 1.58, which is statistically significant difference; t value -4.41, $p < 0.00002$.

The mean diastolic size of the left atrium of patients with pericarditis is 45.5 mm, while the mean diastolic size of the left atrium of patients without pericarditis is a 39.90 mm, which is statistically significant difference; t value -2.01, $p < 0.04$. The mean creatinine level of patients with pericarditis is 52.5 $\mu\text{mol/L}$, whereas, the mean creatinine level of patients without pericarditis is 82.39 $\mu\text{mol/L}$, which is statistically significant difference; t value 1.98, $p < 0.048$.

Patients with pneumonitis have mean aorta diameter of 20.00 mm, whereas, the mean aorta diameter of patients without pneumonitis is 35.32 mm, which is statistically significant difference; t value 3.55, $p < 0.0005$. Patients with pneumonitis have mean serum leukocytes level of 14.80 /l, whereas, the mean serum leukocytes level of patients without pneumonitis is 8.70 /l, which is statistically significant difference; t value -2.11, $p < 0.036$. Patients with pneumonitis have a mean ESR level of 48.00 mm / hour, while the mean ESR level of patients without pneumonitis is an 18.47 mm/he, which is statistically significant difference; t value -2.36, $p < 0.019$. Furthermore, patients with pneumonitis have a mean leukocyte level of 22.00, whereas, the mean urine leukocyte level in urine of patients without pneumonitis is a 2.53, which is statistically significant difference; t value -3.15, $p < 0.001$. The mean CKP-MB in patients with pneumonitis is 1164.00 U / l, while the mean CKP-MB in patients without pneumonitis is a 89.60 U/l, which is statistically significant difference; t -3.92, $p < 0.0001$.

The mean diameter of the aorta, EF, EDV, troponin I, CKP-MB, and APTT in patients with elevated troponin T is 28.00 mm, 36.00 %, 62.00 ml, 33.00 ng/ml, 2881.00 U / l, and 49.10 s, respectively. Whereas, the mean aorta diameter, EF, EDV, troponin I, CKP-MB, APTT in patients without elevation in troponin T is 35.31 mm, 54.68%, 134.95 ml, 4.51 ng/ml, 75.26 U/l, 27.01 sec, respectively, which is statistically significant difference; t value 2.34, 2.01, 2.07, -3.61, -19.34, -2.55, $p < 0.020, 0.045, 0.04, 0.0004, 0.00012$, respectively.

The mean age of patients with an elevated D-dimer level is 68.14 years and the mean age of patients with normal D-dimer level is a 56.60 years, which is statistically significant difference; t value 2.25, $p < 0.04$. The mean diastolic size of the right ventricle of patients with elevated D-dimer level is 25.93 mm, and mean diastolic size of the right ventricle of patients with normal D-dimer is 29.40 mm, which is statistically significant difference; t value -2.35, $p < 0.04$.

Comparing the dependent variable shows no statistical differences. (*Figure 3*)

In terms of correlations, the appendices display the correlation among all the continuous variables. (*Appendix 1*) (*Suppl.1*)

An interesting correlation between the level of LDL and the diameter of the aorta basement has been observed. (*Figure 4.1, 4.2*) It has been shown that when the diastolic size of the left ventricle increases, the EF decreases dramatically. (*Figure 4*)

Discussion

Post-MI changes include early and late pathophysiological changes, early post-MI complications include ventricular rupture, aneurism, arrhythmia, sudden cardiac arrest, and death [24–26]. However, late changes include pericarditis, pneumonitis, pleuritis, and post-infarction cardiosclerosis and dyskinesia [8, 27]. Such manifestations are associated with some laboratory and instrumental changes. Assessment of these changes helps prevent or slow down or at least make a prognosis for patients with MI. The low level of thrombocytes in patients with concomitant CHF returns to the use of antiaggregant and anticoagulants for a long time.

The high level of leukocytes in diabetic patients endorses the hypothesis of a mild chronic mild inflammatory syndrome in patients with metabolic syndrome [9, 21, 23, 28]. The high TAG values in diabetic patients are due to lipogenesis from high glucose serum levels and metabolic disorders associated with chronic lipid peroxidation and biogenesis disorders [28, 29].

The dramatic increase in diastolic size of the right ventricle in patients with COPD is an indicator of the stable stage of pulmonary heart, which is associated with pulmonary hypertension and blood stagnation in the pulmonary circulation [30, 31]. Typically, these patients experience coughing and shortness of breath in the background of distress syndrome, fluid accumulation in pulmonary tissue, and impaired ability of pneumocytes to exchange gas. As compensation for respiratory hypoxemia, the elevation of the levels of erythropoietin and the further elevation of erythropoiesis, which is demonstrated in the high level of Hb in patients with COPD.

Leukocytosis is observed in patients with varicose veins and is an indicator of persistent inflammation with increased tissue hypoxia and a further increase in the hypoxia inducer factor to stimulate erythropoietin production and an additional increase in the level of red blood cells in patients with varicose veins [32, 33]. This persistent inflammation is confirmed by the elevation of the ESR level in patients with varicose veins [34–37].

Post-MI complications reported in 4/5 of the sample and these complications associated with some laboratory and instrumental changes. Suggesting that post MI laboratory changes are not limited to the local myocardial infarction changes to involves systemic manifestations such as kidney function impairment or development of new kidney disease. These changes

include an increase in the aorta diameter at the basement level, an increase in the right ventricle wall, a decrease in the level of RBC, the serum potassium level, and serum calcium level, with an increase in the serum myoglobin. High myoglobin levels are associated with the development of chronic heart failure.

Re-infarct worsens the kidney function and induces renal failure [38–41]. Aging is a risk factor for MI and arrhythmia development. Arrhythmia increases CPK-MB, LDH, AST, diastolic size of both atriums, and decreases EF. The higher the troponin level, the lower the EF, and the fewer further sequelae.

An early post-MI aneurysm significantly alters cardiac output and further reduces systemic systolic blood pressure. These changes are associated with the reduction in the blood flow in to the renal afferent fibers, which are sensed by the juxtaglomerular apparatus that leads to activation the renin angiotensin aldosterone system with the anti-diuretic hormone. Therefore, a reduction in kidney function is observed in patients with MI. Additionally, elevation of creatinine in aneurysm patients is typical for impaired kidney function particularly filtration due to hypoperfusion of the glomeruli. The higher creatinine level is associated with the development of arrhythmia. Also, the higher LDH is associated with the development of arrhythmia.

Patients with pneumonitis are having a high leukocyte in serum and in the urine, high ESR, and high CKP-MB fraction. However, these patients experience small diameter of the aorta basement.

Conclusions

The early prognostic value of the instrumental and laboratory changes is complication dependent. With age, the level of D-dimer and thrombocytes increases. The higher the troponin level, the lower the EF, and the fewer further sequelae. Systemic manifestations include kidney function impairment or development of new kidney disease. These changes include an increase in the diameter of the aorta at the basement level, an increase in the right ventricle wall, a decrease in the level of serum red blood cells, the serum potassium level, and the serum calcium level, with an increase in serum myoglobin. The higher creatinine level is associated with the development of arrhythmia. Also, the higher LDH is associated with the development of arrhythmia.

List of abbreviations

CHF; chronic heart failure, DM; Diabetes mellitus, CKD; Chronic kidney disease, COPD; Chronic obstructive pulmonary disease, MI; myocardial infarction, HR; heart rate, ESR; erythrocytes sedimentation rate, RBC; red blood cells

Declarations

ETHICS APPROVAL AND CONSENT TO PARTICIPATE

The study approved by the National Research Mordovia State University⁶ Russia, from “Ethics Committee Requirement N8/2 from 30.06.2022”.

HUMAN AND ANIMAL RIGHTS

No animals were used in this research. All human research procedures followed were in accordance with the ethical standards of the committee responsible for human experimentation (institutional and national), and with the Helsinki Declaration of 1975, as revised in 2013.

CONSENT FOR PUBLICATION

Written informed consent was obtained from the participants for publication of study results and any accompanying images.

AVAILABILITY OF DATA AND MATERIALS

Applicable on reasonable request.

FUNDING

The work of Basheer Abdullah Marzoog was financed by the Ministry of Science and Higher Education of the Russian Federation within the framework of state support for the creation and development of World-Class Research Center ‘Digital biodesign and personalized healthcare’ № 075-15-2022-304.

CONFLICT OF INTEREST

The authors declare no conflict of interest, financial or otherwise.

ACKNOWLEDGEMENTS

Declared none.

AUTHORS' CONTRIBUTIONS

MB collected the data from the hospital, inserted them into the excel file, analyzed the statistical data, wrote the draft, and revised the final version of the paper. NIB, IAB, NRC,

and VSG inserted data into the excel file. EIG gave me access to the rehabilitation hospital to collect the data. All authors have read and approved the manuscript.

References

1. Tsao CW, Aday AW, Almarzooq ZI, Anderson CAM, Arora P, Avery CL, Baker-Smith CM, Beaton AZ, Boehme AK, Buxton AE, Commodore-Mensah Y, Elkind MS V, Evenson KR, Eze-Nliam C, Fugar S, Generoso G, Heard DG, Hiremath S, Ho JE et al (2023) Heart Disease and Stroke Statistics-2023 Update: A Report From the American Heart Association. *Circulation* 147:e93–e621. <https://doi.org/10.1161/CIR.0000000000001123>
2. Yusuf S, Joseph P, Rangarajan S, Islam S, Mente A, Hystad P, Brauer M, Kutty VR, Gupta R, Wielgosz A, AlHabib KF, Dans A, Lopez-Jaramillo P, Avezum A, Lanans F, Oguz A, Kruger IM, Diaz R, Yusoff K et al (2020) Modifiable risk factors, cardiovascular disease, and mortality in 155 722 individuals from 21 high-income, middle-income, and low-income countries (PURE): a prospective cohort study. *Lancet* 395:795–808. [https://doi.org/10.1016/S0140-6736\(19\)32008-2](https://doi.org/10.1016/S0140-6736(19)32008-2)
3. Ward ZJ, Bleich SN, Cradock AL, Barrett JL, Giles CM, Flax C, Long MW, Gortmaker SL (2019) Projected U.S. State-Level Prevalence of Adult Obesity and Severe Obesity. *N. Engl. J. Med.* 381:2440–2450. <https://doi.org/10.1056/NEJMSA1909301>
4. Grundy SM (2008) A changing paradigm for prevention of cardiovascular disease: emergence of the metabolic syndrome as a multiplex risk factor. *Eur. Hear. J. Suppl.* 10:B16–B23. <https://doi.org/10.1093/EURHEARTJ/SUM044>
5. Abdullah Marzooq B (2022) Adaptive and Compensatory Mechanisms of the Cardiovascular System and Disease Risk Factors in young males and females. *New Emirates Med. J.* 04: <https://doi.org/10.2174/04666221128110145>
6. Bays HE, Taub PR, Epstein E, Michos ED, Ferraro RA, Bailey AL, Kelli HM, Ferdinand KC, Echols MR, Weintraub H, Bostrom J, Johnson HM, Hoppe KK, Shapiro MD, German CA, Virani SS, Hussain A, Ballantyne CM, Agha AM et al (2021) Ten things to know about ten cardiovascular disease risk factors. *Am. J. Prev. Cardiol.* 5:100149. <https://doi.org/10.1016/J.AJPC.2021.100149>
7. Powell-Wiley TM, Poirier P, Burke LE, Després JP, Gordon-Larsen P, Lavie CJ, Lear SA, Ndumele CE, Neeland IJ, Sanders P, St-Onge MP (2021) Obesity and Cardiovascular Disease: A Scientific Statement From the American Heart Association.

- 461 Circulation 143:e984. <https://doi.org/10.1161/CIR.0000000000000973>
- 462 8. Marzoog BA, Alexandrovich KO, Nikolaevich TM, Vladimirovich KS (2023) Post-
463 Coronary Artery Bypass Graft Complications; Potential Causes and Risk Factors.
464 medRxiv 2022.12.29.22284005. <https://doi.org/10.1101/2022.12.29.22284005>
- 465 9. Marzoog BA (2023) Tree of life: endothelial cell in norm and disease, the good guy is
466 a partner in crime! Anat Cell Biol. <https://doi.org/10.5115/acb.22.190>
- 467 10. Tian X, Chen S, Wang P, Xu Q, Zhang Y, Luo Y, Wu S, Wang A (2022) Insulin
468 resistance mediates obesity-related risk of cardiovascular disease: a prospective cohort
469 study. Cardiovasc. Diabetol. 21:289. <https://doi.org/10.1186/s12933-022-01729-9>
- 470 11. Lavie CJ, Ozemek C, Carbone S, Katzmarzyk PT, Blair SN (2019) Sedentary
471 Behavior, Exercise, and Cardiovascular Health. Circ. Res. 124:799–815.
472 <https://doi.org/10.1161/CIRCRESAHA.118.312669>
- 473 12. Lorber D (2014) Importance of cardiovascular disease risk management in patients
474 with type 2 diabetes mellitus. Diabetes, Metab. Syndr. Obes. 7:169–183.
475 <https://doi.org/10.2147/DMSO.S61438>
- 476 13. Marzoog BA (2022) Autophagy in endothelial cell dysfunction. Curr Mol Med
- 477 14. Marzoog BA (2023) Endothelial cell autophagy in the context of disease development.
478 Anat. Cell Biol. 56:16–24. <https://doi.org/10.5115/acb.22.098>
- 479 15. Marzoog BA (2023) Transcription Factors - the Essence of Heart Regeneration: A
480 Potential Novel Therapeutic Strategy. Curr. Mol. Med. 23:232–238.
481 <https://doi.org/10.2174/1566524022666220216123650>
- 482 16. Marzoog BA (2023) Autophagy Behavior in Post-myocardial Infarction Injury.
483 Cardiovasc. Hematol. Disord. Targets 23:.
484 <https://doi.org/10.2174/1871529X23666230503123612>
- 485 17. Marzoog BA (2022) Recent advances in molecular biology of metabolic syndrome
486 pathophysiology: endothelial dysfunction as a potential therapeutic target. J. Diabetes
487 Metab. Disord. 21:1903–1911. <https://doi.org/10.1007/s40200-022-01088-y>
- 488 18. Marzoog BA, Vlasova TI (2021) Membrane lipids under norm and pathology. Eur. J.
489 Clin. Exp. Med. 19:59–75. <https://doi.org/10.15584/ejcem.2021.1.9>
- 490 19. Marzoog B (2021) Lipid Behavior in Metabolic Syndrome Pathophysiology. Curr.
491 Diabetes Rev. 18:.. <https://doi.org/10.2174/1573399817666210915101321>
- 492 20. Abdullah Marzoog B (2023) Caveolae's Behavior in Norm and Pathology. New
493 Emirates Med. J. 04: <https://doi.org/10.2174/0250688204666230508112229>
- 494 21. Marzoog BA (2023) The Metabolic Syndrome Puzzles; Possible Pathogenesis and

- 495 Management. *Curr. Diabetes Rev.* 19:59–66.
- 496 <https://doi.org/10.2174/1573399818666220429100411>
- 497 22. Marzooq BA, Vlasova TI (2022) Myocardiocyte autophagy in the context of
- 498 myocardiocytes regeneration: a potential novel therapeutic strategy. *Egypt. J. Med.*
- 499 *Hum. Genet.* 23:41. <https://doi.org/10.1186/s43042-022-00250-8>
- 500 23. Marzooq BA, Vlasova TI (2022) Beta-cell autophagy under the scope of hypoglycemic
- 501 drugs; possible mechanism as a novel therapeutic target. *Obe. Metab.* 18:465–470.
- 502 <https://doi.org/10.14341/omet12778>
- 503 24. Damluji AA, Van Diepen S, Katz JN, Menon V, Tamis-Holland JE, Bakitas M, Cohen
- 504 MG, Balsam LB, Chikwe J (2021) Mechanical Complications of Acute Myocardial
- 505 Infarction: A Scientific Statement From the American Heart Association. *Circulation*
- 506 144:E16–E35. <https://doi.org/10.1161/CIR.0000000000000985>
- 507 25. Konstam MA, Kramer DG, Patel AR, Maron MS, Udelson JE (2011) Left ventricular
- 508 remodeling in heart failure: Current concepts in clinical significance and assessment.
- 509 *JACC Cardiovasc. Imaging* 4:98–108. <https://doi.org/10.1016/J.JCMG.2010.10.008>
- 510 26. Ibanez B, James S, Agewall S, Antunes MJ, Bucciarelli-Ducci C, Bueno H, Caforio
- 511 ALP, Crea F, Goudevenos JA, Halvorsen S, Hindricks G, Kastrati A, Lenzen MJ,
- 512 Prescott E, Roffi M, Valgimigli M, Varenhorst C, Vranckx P, Widimský P et al (2018)
- 513 2017 ESC Guidelines for the management of acute myocardial infarction in patients
- 514 presenting with ST-segment elevation. *Eur. Heart J.* 39:119–177.
- 515 <https://doi.org/10.1093/EURHEARTJ/EHX393>
- 516 27. Elbadawi A, Elgendy IY, Mahmoud K, Barakat AF, Mentias A, Mohamed AH,
- 517 Ogunbayo GO, Megaly M, Saad M, Omer MA, Paniagua D, Abbott JD, Jneid H
- 518 (2019) Temporal Trends and Outcomes of Mechanical Complications in Patients With
- 519 Acute Myocardial Infarction. *JACC Cardiovasc. Interv.* 12:1825–1836.
- 520 <https://doi.org/10.1016/J.JCIN.2019.04.039>
- 521 28. Marzooq B (2022) Lipid Behavior in Metabolic Syndrome Pathophysiology. *Curr.*
- 522 *Diabetes Rev.* 18:e150921196497.
- 523 <https://doi.org/10.2174/1573399817666210915101321>
- 524 29. Glowinski J, Glowinski S (2002) Generation of reactive oxygen metabolites by the
- 525 varicose vein wall. *Eur. J. Vasc. Endovasc. Surg.* 23:550–555.
- 526 <https://doi.org/10.1053/EJVS.2002.1656>
- 527 30. Marzooq BA (2022) Pulmonary Fibrosis; Risk Factors and Molecular Triggers, Insight
- 528 for Neo Therapeutic Approach. *Curr. Respir. Med. Rev.* 18:259–266.

- 529 <https://doi.org/10.2174/1573398X18666220806124019>
- 530 31. Marzooq BA (2023) Local Lung Fibroblast Autophagy in the Context of Lung Fibrosis
- 531 Pathogenesis. *Curr. Respir. Med. Rev.* 19:6–11.
- 532 <https://doi.org/10.2174/1573398X19666221130141600>
- 533 32. Poredos P, Spirkoska A, Rucigaj T, Fareed J, Jezovnik MK (2015) Do Blood
- 534 Constituents in Varicose Veins Differ From the Systemic Blood Constituents?
- 535 <https://doi.org/10.1016/j.ejvs.2015.04.031>
- 536 33. Lattimer CR, Kalodiki E, Geroulakos G, Hoppensteadt D, Fareed J (2016) Are
- 537 Inflammatory Biomarkers Increased in Varicose Vein Blood? *Clin. Appl. Thromb.*
- 538 22:656–664.
- 539 https://doi.org/10.1177/1076029616645330/ASSET/IMAGES/LARGE/10.1177_1076
- 540 029616645330-FIG2.JPEG
- 541 34. Bontekoe E, Brailovsky Y, Hoppensteadt D, Bontekoe J, Siddiqui F, Newman J, Iqbal
- 542 O, Reed T, Fareed J, Darki A (2021) Upregulation of Inflammatory Cytokines in
- 543 Pulmonary Embolism Using Biochip-Array Profiling. *Clin. Appl. Thromb.* 27:.
- 544 <https://doi.org/10.1177/10760296211013107>
- 545 35. Dzieciuchowicz L, Espinosa G, Páramo JA (2015) Increased levels of
- 546 metalloproteinase 10 and hemostatic markers in patients with noncomplicated primary
- 547 varicose veins. *Clin. Appl. Thromb.* 21:684–687.
- 548 <https://doi.org/10.1177/1076029613517167>
- 549 36. Gwozdzinski L, Pieniazek A, Bernasinska-Slomczewska J, Hikisz P, Gwozdzinski K
- 550 (2021) Alterations in the Plasma and Red Blood Cell Properties in Patients with
- 551 Varicose Vein: A Pilot Study. *Cardiol. Res. Pract.* 2021:1–10.
- 552 <https://doi.org/10.1155/2021/5569961>
- 553 37. Jezovnik MK, Fareed J, Poredos P (2017) Patients with a History of Idiopathic Deep
- 554 Venous Thrombosis Have Long-Term Increased Levels of Inflammatory Markers and
- 555 Markers of Endothelial Damage. *Clin. Appl. Thromb.* 23:124–131.
- 556 <https://doi.org/10.1177/1076029616670259>
- 557 38. Wang C, Pei YY, Ma YH, Ma XL, Liu ZW, Zhu JH, Li CS (2019) Risk factors for
- 558 acute kidney injury in patients with acute myocardial infarction. *Chin. Med. J. (Engl).*
- 559 132:1660. <https://doi.org/10.1097/CM9.0000000000000293>
- 560 39. Shacham Y, Leshem-Rubinow E, Steinvil A, Assa E Ben, Keren G, Roth A, Arbel Y
- 561 (2014) Renal impairment according to acute kidney injury network criteria among ST
- 562 elevation myocardial infarction patients undergoing primary percutaneous

intervention: A retrospective observational study. Clin. Res. Cardiol. 103:525–532.
<https://doi.org/10.1007/S00392-014-0680-8>
40. Tsai TT, Patel UD, Chang TI, Kennedy KF, Masoudi FA, Matheny ME, Kosiborod M, Amin AP, Messenger JC, Rumsfeld JS, Spertus JA (2014) Contemporary incidence, predictors, and outcomes of acute kidney injury in patients undergoing percutaneous coronary interventions: Insights from the NCDR cath-PCI registry. JACC Cardiovasc. Interv. 7:1–9. <https://doi.org/10.1016/J.JCIN.2013.06.016>
41. Maksimczuk J, Galas A, Krzesiński P (2022) What Promotes Acute Kidney Injury in Patients with Myocardial Infarction and Multivessel Coronary Artery Disease—Contrast Media, Hydration Status or Something Else? Nutr. 2023, Vol. 15, Page 21 15:21. <https://doi.org/10.3390/NU15010021>

Figure legend

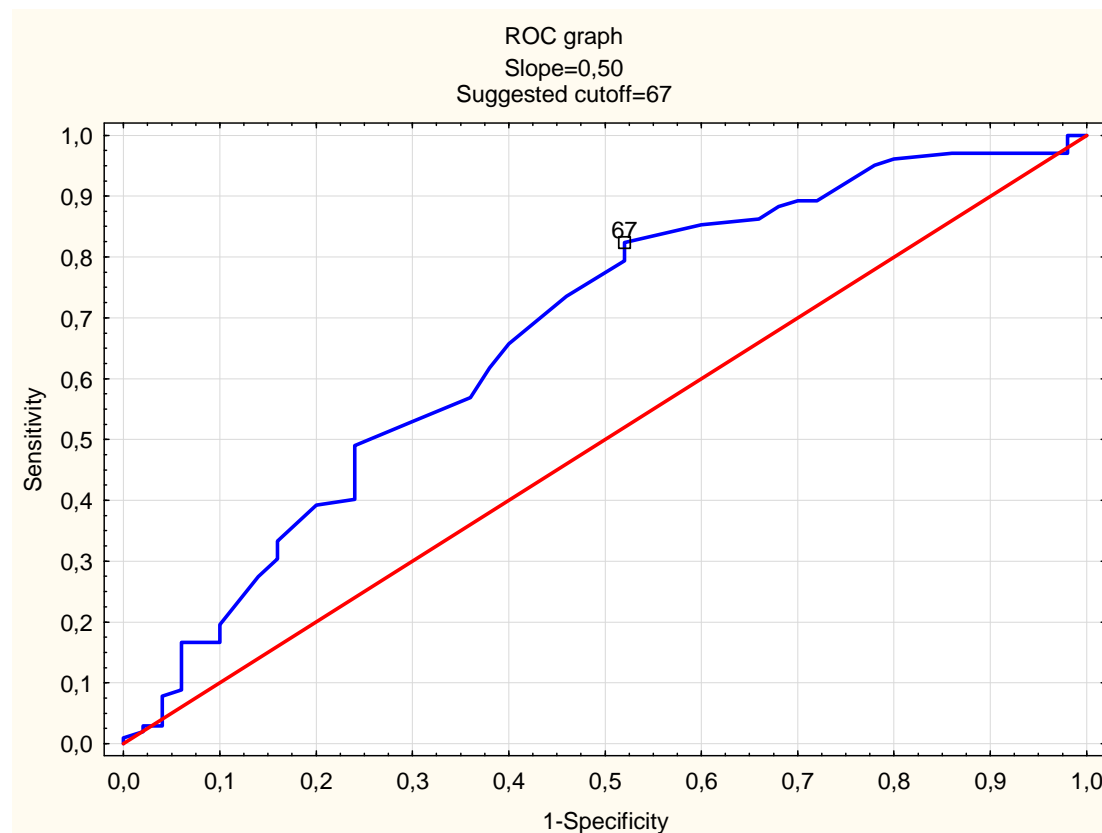


Figure 1: Cut-off point for the age of the patients divided into male and female. Males are less than 67 years old. However, the female affected at more than 67 years of age.

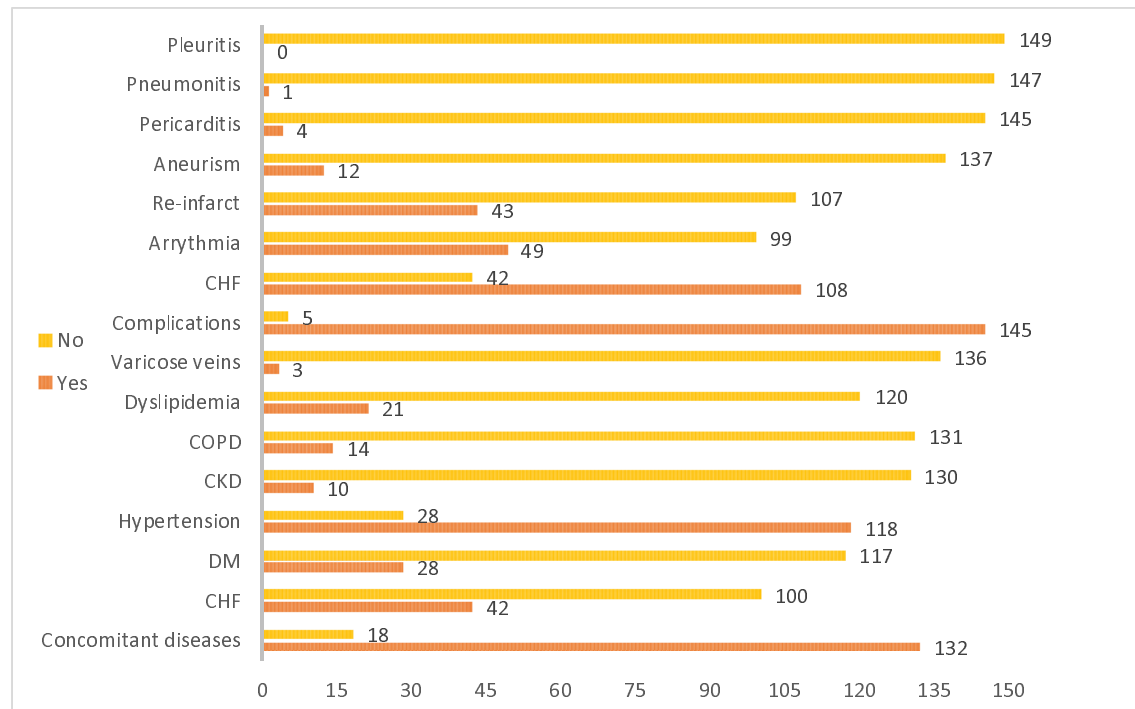


Figure 2: Diagramed presentation of the concomitant and the post MI complications. From below complications (CHF, DM, hypertension, CKD, COPD, dyslipidaemia, varicose veins) belong to concomitant diseases before the development of MI. Abbreviations: CHF; chronic heart failure, COPD; chronic obstructive pulmonary disease, CKD; chronic kidney disease, DM; diabetes mellites.

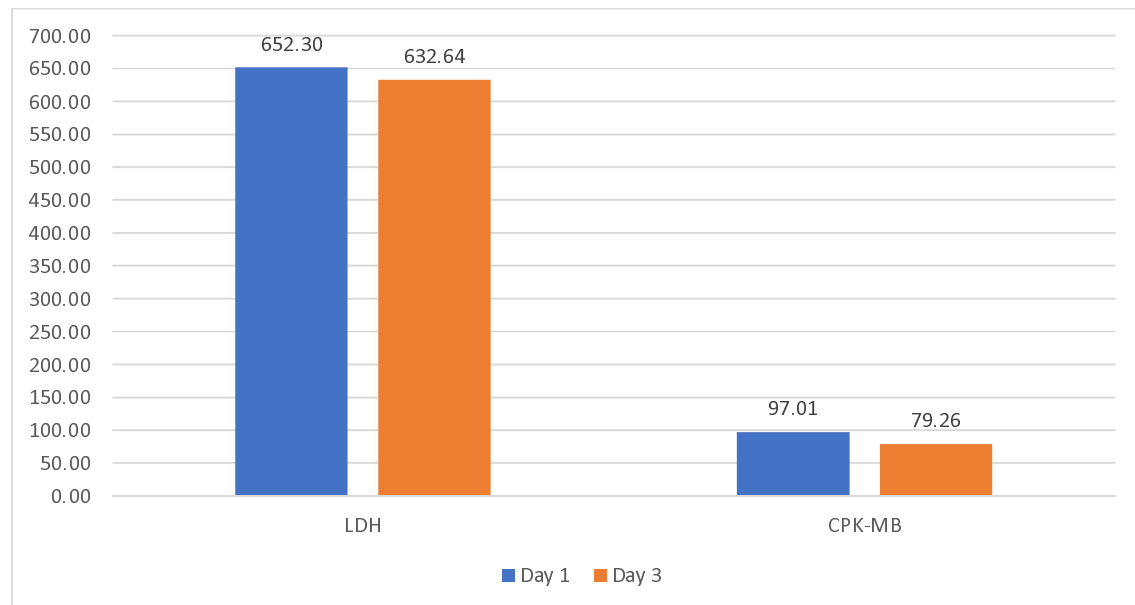
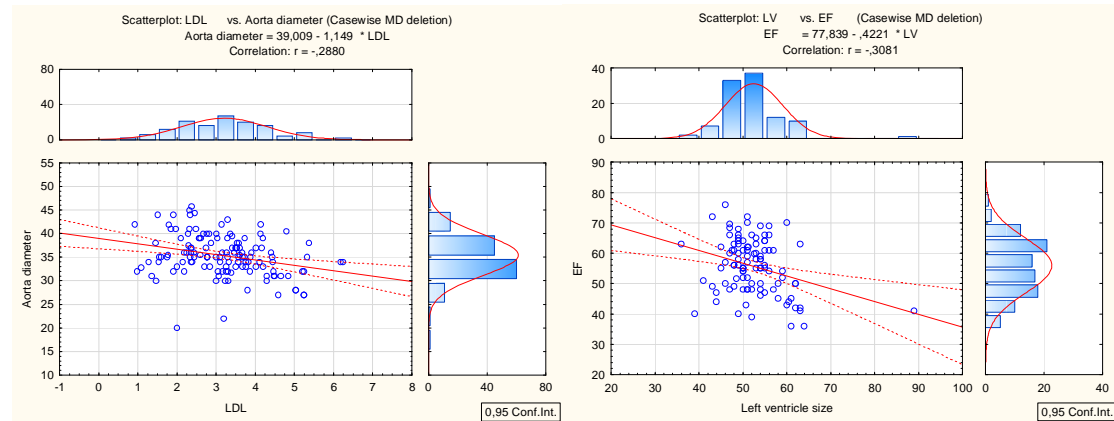


Figure 3: Graphical presentation of the dynamical changes in the levels of LDH (lactate dehydrogenase) and CPK-MB (creatinine phosphokinase-MB fraction). Both LDH and CPK-

588 MB fraction measured by U/L. this analysis conducted between two days for all patients as a
 589 follow up after MI.



590
 591 Figure 4.1 and 4.2: A direct correlation between LDL level and the aorta diameter.
 592 Furthermore, an opposite correlation between the left ventricle (LV) diastolic size and the EF.
 593
 594

All these charts have a statistically significant correlation

