

Low-attenuation Coronary Plaque Volume and Cardiovascular Events in Patients with Distinct Metabolic Phenotypes

Kenichiro Otsuka, MD, PhD^{1*}; Hirotoshi Ishikawa, MD, PhD²; Kenei Shimada, MD, PhD²; Kana Hojo, MD²; Hiroki Yamaura, MD²; Yasushi Kono, MD, PhD²; Noriaki Kasayuki, MD, PhD²; Daiju Fukuda, MD, PhD¹

Affiliations:

¹Department of Cardiovascular Medicine, Osaka Metropolitan University Graduate School of Medicine, Osaka, Japan

²Department of Cardiovascular Medicine, Fujiikai Kashibaseiki Hospital, Kashiba, Japan

Short title: High-risk plaque and patient prognosis

***Corresponding author:** Kenichiro Otsuka

Department of Cardiovascular Medicine

Osaka Metropolitan University Graduate School of Medicine

1-4-3 Asahi-cho, Abeno-ku, Osaka 545-8585, Japan

Tel.: +81-666453801

Fax: +81-6646-6808

Email: otsukakenichiro1@gmail.com

Word count: 6,193 words, including text, figure legends, and reference

Abstract

Background: This study aimed to investigate the association between diabetes mellitus (DM), high-risk coronary plaque burden, and risk of cardiovascular outcomes across metabolic phenotypes in patients with suspected coronary artery disease (CAD) who underwent coronary computed tomography angiography (CCTA).

Methods: We included 530 patients who underwent CCTA. Metabolic syndrome (MetS) was defined as the presence of a visceral adipose tissue area $\geq 100 \text{ cm}^2$ in patients with DM (n = 58), or two or more MetS components excluding DM (n = 114). Remaining patients were categorized into non-MetS patients with DM (n = 52) and non-MetS patients without DM (n = 306). CCTA-based high-risk plaque was defined as low-attenuation plaque (LAP) volume $> 4 \%$. Primary endpoint was presence of a major cardiovascular event (MACE), which was defined as a composite of cardiovascular death, acute coronary syndrome, and coronary revascularization.

Results: Incidence of MACE was highest in the non-MetS with DM group, followed hierarchically by the MetS with DM, MetS without DM, and non-MetS without DM groups. In the multivariable Cox hazard model analysis, DM as a predictor was associated with MACE independent of LAP volume $> 4 \%$ (hazard ratio, 2.68; 95% confidence interval, 1.16–6.18; p = 0.02), although MetS did not remain an independent predictor. LAP volume $> 4 \%$ remained a predictor of MACE independent of each metabolic phenotype or DM.

Conclusions: This study demonstrated that DM, rather than MetS, is a predictor of coronary events independent of high-risk plaque volume in patients who underwent CCTA.

Keywords

acute coronary syndrome, adipose tissue, computed tomography angiography, coronary artery disease, diabetes mellitus

Clinical Perspective

1) What Is New?

- This study investigated the association between diabetes mellitus (DM), high-risk coronary plaque burden, and major adverse cardiovascular events (MACE) across metabolic phenotypes stratified by the presence or absence of metabolic syndrome (MetS) and DM in patients with suspected coronary artery disease (CAD) who underwent coronary computed tomography angiography (CCTA).
- Among the four metabolic phenotypes, incidence of MACE was highest in the non-MetS with DM group, followed hierarchically by the MetS with DM, MetS without DM, and non-MetS without DM groups. Low-attenuation coronary plaque (LAP) volume > 4% was a robust predictor of MACE among the metabolic phenotypes. Furthermore, DM, independent of LAP volume > 4%, was a predictor of MACE, while MetS did not show a significant predictive value.

2) What Are the Clinical Implications?

- Our results demonstrate that individuals with DM alone have a significantly higher risk of developing cardiovascular events than those with MetS, indicating that DM is an independent predictor of cardiovascular events irrespective of the presence of obstructive CAD or LAP volume greater than 4%.

Non-standard Abbreviations and Acronyms.

- 69 ACS- acute coronary syndrome
- 70 ASCVD- Atherosclerotic cardiovascular disease
- 71 CACS- Coronary artery calcium score
- 72 CAD- coronary artery disease
- 73 CCTA- coronary computed tomography angiography
- 74 CP- Calcified plaques
- 75 DM- diabetes mellitus
- 76 LAP- Low-attenuation plaque
- 77 MACE- Major adverse cardiovascular events
- 78 MetS- Metabolic Syndrome
- 79 NCP- noncalcified plaque

80

81 **Introduction**

82 The global prevalence of diabetes mellitus (DM) and metabolic syndrome (MetS) has
 83 increased significantly over the past decades, contributing to an increased risk of atherosclerotic
 84 cardiovascular disease (ASCVD) ¹. Clinical studies have demonstrated that an overweight status
 85 (25–29.9 kg/m²) or obesity (≥ 30 kg/m²), defined by body mass index (BMI) alone, reflects
 86 heterogeneous body fat distribution and distinct metabolic conditions ². This raises questions
 87 about the relationship between BMI and ASCVD risk, which leads to the obesity paradox.
 88 Although visceral adiposity, a modifiable risk factor for MetS, helps identify metabolically
 89 unhealthy individuals ^{1–4}, coronary plaque features associated with ASCVD events in individuals
 90 with distinct metabolic phenotypes remain largely unknown.

Coronary computed tomography angiography (CCTA) facilitates the diagnosis of coronary artery disease (CAD) and offers a prognostic value based on high-risk coronary plaque features beyond stenosis severity⁵. Furthermore, a recent CCTA study demonstrated that low-attenuation non-calcified coronary plaque burden is the strongest prognostic marker among other clinical factors, such as the presence of CAD and coronary artery calcium score (CACS)⁶. This finding suggests the utility of CCTA in identifying high-risk patients. In a sub-analysis of a large clinical CCTA trial of patients with chest pain and distinct metabolic phenotypes, Kammerlander et al. demonstrated that metabolically unhealthy individuals without obesity were at a high risk for ASCVD events⁷. Although DM plays a key role in the pathophysiology of MetS⁸, there is limited knowledge on its association with high-risk plaque volume detected on CCTA and consequent cardiovascular outcomes. In this CCTA study, we aimed to investigate the association between MetS with and without DM, imaging findings, and the risk of outcomes across MetS phenotypes.

Methods

The data that support the findings of this study are available from the corresponding author on reasonable request.

Study population and metabolic phenotypes

This study included patients who underwent CCTA between January 2018 and December 2020 and were clinically indicated for stable chest symptoms, along with an abdominal computed tomography (CT) scan to assess abdominal obesity. The exclusion criteria were as follows: (1) acute coronary syndrome; (2) previous history of coronary artery bypass graft or

open-heart surgery; (3) congestive heart failure; (4) previous history of percutaneous coronary intervention; (5) insufficient patient information; and (6) loss to follow-up. Figure 1 illustrates the flowchart of the study population comprising 530 patients. All participants provided written informed consent for the use of de-identified data, including clinical information, laboratory tests, and CCTA imaging. The Fujiikai Kashibaseiki Hospital Institutional Review Board approved pooled data analysis (2021-A).

Non-contrast-enhanced abdominal CT imaging was performed before CCTA to measure the visceral adipose tissue (VAT) areas. VAT areas were measured at the L2–L3 level using a dedicated software (SYNAPSE VINCENT, Fujifilm Inc., Tokyo, Japan). In the present study, abdominal obesity was defined as a VAT area $\geq 100 \text{ cm}^2$, corresponding to an abdominal circumference $\geq 85 \text{ cm}$ for men and $\geq 90 \text{ cm}$ for women ⁹. MetS was defined based on the Japanese Committee for the Diagnostic Criteria of Metabolic Syndrome ¹⁰. MetS was defined as the presence of abdominal obesity with DM (MetS with DM) or two or more of the following components in the absence of DM: (1) systolic blood pressure (BP) $\geq 130 \text{ mmHg}$ or diastolic BP $\geq 85 \text{ mmHg}$; (2) fasting plasma glucose $\geq 110 \text{ mg/dL}$; and (3) triglycerides $\geq 150 \text{ mg/dL}$ or high-density lipoprotein cholesterol $\leq 40 \text{ mg/dL}$. In addition, medical therapy using antihypertensive, antidiabetic, and lipid-lowering drugs was considered an MetS component. Patients were further categorized into four groups according to the presence or absence of metabolic equivalents (MetS) and DM. The triglyceride-glucose (TyG) index was used to estimate the insulin resistance in the four groups ¹¹.

Pharmacological treatment and lifestyle modifications were recommended for all patients according to the guidelines for hypertension, dyslipidemia, and diabetes, if present ¹². In addition, patients underwent invasive coronary angiography or coronary revascularization based on the

results of the CCTA and noninvasive stress tests¹³. According to the Japanese Atherothrombosis Society guidelines, the treatment targets of low-density lipoprotein cholesterol (LDL-C) for the primary prevention of ASCVD were <100 mg/dL for high-risk, 120 mg/dL for moderate-risk, or 140 mg/dL for low-risk patients¹². The treatment target for the fasting triglyceride (TG) level was < 150 mg/dL. For hypertensive patients, the treatment target for blood pressure is <140/90 mmHg, particularly for patients with diabetes or CKD with albuminuria <130/80 mmHg¹⁴. The target glycemic control was HbA1c < 7.0% for preventing diabetic complications and < 8.0% for those with difficulties in glycemic control for hypoglycemia¹⁵.

CCTA imaging and analysis

CCTA was performed using a 320-row multi-detector CT scanner (Aquilion ONE/NATURE Edition, Canon Medical Systems, Inc., Japan)¹⁶. The scan parameters included a detector collimation of 0.5 × 320 mm, gantry rotation time of 350 ms, tube voltage of 120 kV, and tube current of 130–600 mA. An electrocardiogram-triggered prospective gating method was used for CCTA. CACS was evaluated using the Agatston method at a fixed thickness of 3 mm¹⁷. Images were reconstructed using forward projected model-based iterative reconstruction solution for coronary artery analysis, with a cross-sectional thickness of 0.5 mm and a reconstruction increment of 0.25 mm.

The Agatston score categories were as follows: 0, 1–100, 101–400, and >400 Agatston units, using a software (SYNAPSE VINCENT version 4.6., Fujifilm inc., Tokyo, Japan). Coronary artery diameter stenosis was reported based on a 16-segment American Heart Association model by two observers (K.O. and H.I.). Obstructive CAD was defined as the presence of coronary plaques with diameter stenosis of ≥ 50% in one or more major epicardial

vessels, and/or $\geq 50\%$ in the left main coronary segment. Non-obstructive CAD was defined as having less than 50% diameter stenosis of epicardial coronary arteries. Patients who did not fall in either categories were categorized as not having CAD.

For coronary plaque analysis, coronary artery centerlines were identified semi-automatically; the proximal and distal portions of the coronary plaque lesions were manually defined; and the vessel wall, lumen, and plaque components were auto-segmented and manually adjusted. Lesions were categorized based on their composition into calcified plaques (CP) (> 150 Hounsfield units [HU]) and non-CP (NCP) (< 150 HU). Furthermore, a low-attenuation plaque (LAP) was defined as a region with a CT value < 30 HU¹⁶. The percentage of plaque volume for each component was calculated as the plaque volume divided by the vessel volume.

The epicardial adipose tissue (EAT) volume was measured from contrast-enhanced CT images using the VINCENT software, cited previously^{16,18}. Several equidistant axial planes were extracted based on the heart size. The upper limit of the slice was set at the bifurcation of the pulmonary artery trunk, whereas the lower limit was set at the last slice containing any structure of the heart. In each plane, the software autodetected a smooth, closed pericardial contour as the region of interest; adipose tissue was identified with CT attenuation values ranging from -250 to -30 HU within the pericardial sac^{16,18}. Finally, EAT volume was calculated as the sum of the EAT areas in each slice. The mean CT value within the measured EAT volume was reported.

Endpoints

The primary endpoint was major adverse cardiovascular events (MACE) defined by a composite of cardiovascular death, nonfatal myocardial infarction, unstable angina, or symptom-

or ischemia-driven coronary revascularization. Cardiovascular death was defined as death due to cardiovascular causes including myocardial infarction, sudden cardiac arrest, heart failure, and stroke¹⁹. Non-fatal myocardial infarction was defined as typical persistent chest pain with elevated cardiac enzymes¹⁹. Unstable angina was defined as new-onset angina, exacerbation of angina with light exertion, or angina at rest without elevated cardiac enzyme levels. Symptom- or ischemia-driven coronary revascularization was defined as coronary revascularization >3 months after CCTA imaging at baseline, with >75% diameter stenosis with symptoms, or positive functional tests, or with a $\geq 90\%$ diameter stenosis with symptoms.

Statistical analysis

All statistical analyses were performed using SPSS version 24 software (IBM Corp., Armonk, NY, USA). Categorical variables were presented as absolute and relative frequencies, and continuous variables were presented as mean (\pm standard deviation). Subject characteristics were compared using one-way analysis of variance for numerical variables. Categorical variables were analyzed using the chi-square or Fisher's exact tests. Multivariate Cox proportional hazards analysis was used to estimate hazard ratios (HRs) with 95% confidence intervals (CIs). To test the hypothesis that DM or MetS serve as a predictor of MACE independent of high-risk plaque volume, DM (or MetS) and LAP volume > 4% were entered into the multivariate Cox proportional hazards models adjusted for the Suita CVD risk score (model 1 and model 2). Furthermore, to test the hypothesis that each metabolic phenotype remains as a predictor of MACE independent of high-risk plaque volume, each metabolic phenotype, as compared with non-DM without MetS and LAP volume > 4%, were entered into the multivariate Cox proportional hazards models adjusted for the Suita CVD risk score (models 3, 4, and 5).

Additionally, multivariable models were constructed. Variables entered into the multivariate models were selected on the basis of clinical plausibility, multicollinearity, and known association with CV death and acute coronary syndrome (ACS), with the adjustment for Suita CVD risk score: Model 1, LAP volume > 4% and TyG index; Model 2, LAP volume > 4% and CKD; Model 3, LAP volume > 4% and CRP; and Model 4, LAP volume > 4% and obstructive CAD (any vessels) (supplementary Table 1).

Kaplan–Meier curves and log-rank tests were used to depict and assess the differences in cumulative event rates among the four groups. Analyses were initiated at the time of CCTA imaging and terminated at the earliest occurrence of the primary endpoint or at the median follow-up (2.91 years). Analyses were censored at the last follow-up or at a composite event, whichever occurred earlier. Statistical significance was set at $p < 0.05$ (two-sided).

Results

All CCTA images of the 530 patients qualified for analysis. The mean age of the patients was 64 ± 14 years, and 299 (56%) patients were men. Baseline characteristics stratified by metabolic phenotype are presented in Table 1. MetS were present in 172 of the 530 patients (32%), and DM was observed in 110 (21%). Of these, DM was present in 52 patients in the non-MetS (15%) and 58 in the MetS group (44%). The highest TyG index was observed in the patients with metabolic equivalents (MetS) and DM, followed by those without DM, non-MetS with DM, and non-MetS without DM.

Table 2 shows the baseline CCTA findings of the four groups. The prevalence of CACS > 400 was greatest in the MetS with DM (22%) and non-MetS with DM groups (21%, overall $p < 0.001$). The frequency of obstructive CAD was the highest in the non-MetS with DM group

(58%), sequentially followed by the MetS with DM (46%), MetS without DM (39%), and non-MetS without DM groups (36%). The MetS with DM group featured greater NCP, LAP, and CP volumes than those without DM. While significantly greater EAT volumes were observed in individuals with MetS than in those without MetS, there was no significant difference in DM. Non-MetS with DM had the lowest mean CT values among the four groups ($p < 0.001$).

Primary outcome

During a mean follow-up period of 2.7 ± 0.9 years (median 2.91 years), MACE was observed in 25 patients (4.7%). The primary outcome was observed in seven patients in the non-MetS without DM group, eight in the non-MetS with DM group, six in the MetS without DM group, and four in the MetS with DM group. The incidence rate for the composite endpoint was highest in the non-MetS with DM group, followed hierarchically by the MetS with DM, MetS without DM, and non-MetS without DM group ($p < 0.001$, log-rank test; Figure 2).

Table 3 summarizes the unadjusted Cox proportional hazards models used to predict the primary endpoint. CACS > 400 ($p < 0.001$), LAP volume $> 4\%$ ($p < 0.001$), obstructive CAD (patient-level and vessel-level, $p < 0.05$), and DM ($p < 0.001$) were significantly associated with the primary endpoint. Patients with angiographically confirmed MACE ($n = 20$) exhibited significantly higher prevalence of LAP volume $> 4\%$ in LAD (45% versus 23.5%; $p = 0.036$) and RCA (40% versus 18%; $p = 0.035$) and tended to have higher prevalence of LAP volume $> 4\%$ in LCX (20% vs. 9.3%; $p = 0.09$) compared to those without MACE. In the multivariable Cox proportional hazards model analysis (Table 4), DM as a predictor was associated with the primary endpoint, independent of LAP volume $> 4\%$ (HR for DM in model 1; HR, 2.68; 95% CI, 1.16–6.18; $p = 0.02$), although MetS did not remain an independent predictor (model 2 in Table

4). For the subgroup analysis of each metabolic phenotype (non-DM without MetS as reference), DM without MetS remained as a predictor of MACE independent of LAP volume > 4% (model 3), whereas DM with MetS (model 4) or non-DM with MetS (model 5) did not reach statistical significance. Finally, we examined the association of MACEs with parameters other than DM or MetS. In the multivariable models, TyG index (HR, 1.78; 95% CI, 1.10–2.89; $p = 0.019$) or obstructive CAD (HR, 5.49; 95% CI, 1.84–16.38; $p = 0.002$) was independently associated with MACE even after adjusting for the Suita CVD risk score, but CKD or CRP did not remain as a predictor (supplementary Table 1).

Discussion

This study investigated the association between distinct metabolic phenotypes according to the presence or absence of MetS and DM, and cardiovascular outcomes in symptomatic patients undergoing CCTA. The major findings of this study were as follows: (1) among the four groups, the worst prognosis was observed in non-MetS patients with DM compared to MetS patients with or without DM; (2) LAP volume > 4% was a robust predictor of MACE among the metabolic phenotypes; and (3) DM, independent of LAP volume > 4%, was a predictor of the primary endpoint; while MetS did not show a significant predictive value.

Metabolic disorders, high-risk plaque burden, and outcomes

Several large clinical trials have demonstrated that myocardial ischemia is an important surrogate marker for improving outcomes in patients with stable CAD, whereas ischemia-guided management has a limited ability to prevent acute coronary events compared with optimized medical therapy^{20,21}. These findings question the credibility of ischemia-guided management of

patients with stable CAD, thus redirecting attention towards coronary microvascular dysfunction and high-risk plaque burden^{22–24}. An increased plaque burden, especially of non-calcified plaques, has been reported in patients with MetS²⁵. Yonetsu et al. used optical coherence tomography to demonstrate that MetS were associated with an increased burden of lipid-rich plaques²⁵. Although these findings indicate a potential link between obesity, metabolic disorders, and unfavorable coronary plaque features, there is limited knowledge regarding coronary plaque burden in distinct metabolic phenotypes with and without DM.

Previous clinical studies have reported an inverse association between BMI and cardiovascular prognosis (obesity paradox)^{7,26,27}. In patients with ASCVD and DM, Pagidipati et al. demonstrated that overweight or obese individuals had a lower cardiovascular risk than those with normal weight²⁷. In a sub-analysis of a large clinical CCTA trial of patients with chest pain, among distinct metabolic phenotypes, Kammerlander et al. demonstrated that metabolically unhealthy individuals without obesity exhibited an increased high-risk plaque burden and a high risk of ASCVD events⁷. This paradoxically benign effect of obesity may be explained by its protective effect against atherosclerosis. Obese patients lack sarcopenia, have limited capacity for exercise, and have reduced mobility, all of which are associated with an increased incidence of cognitive decline, heart failure, and mortality²⁸. In addition, we observed increased fasting plasma glucose levels in patients with non-MetS DM. Hyperglycemia and insulin resistance have been reported to be key drivers of calcification in DM^{8,11,29}. Liu et al. showed that higher glucose levels and their variability are associated with plaque rupture in patients with ST-segment elevation myocardial infarction³⁰. These findings suggest that metabolic phenotypes can help identify patients at high risk of cardiovascular events in addition to a high-risk plaque burden.

Epicardial adipose tissue, plaque characteristics, and outcomes

CAD is a chronic inflammatory disease with an underlying risk of metabolic disorders³¹. A close relationship between abdominal visceral obesity and an increased coronary atherosclerotic burden has been reported^{4,32}. Our results demonstrated that MetS patients with or without DM had increased EAT and LAP volumes, whereas non-MetS patients with DM had the worst outcomes, with lower EAT and LAP volumes, indicating an alternate pathophysiology of acute coronary syndromes in the latter. Our findings are consistent with the observations of Kammerlander et al., who demonstrated that both metabolically unhealthy obese and non-obese subjects exhibited increased high-risk plaques⁷. The increased prevalence of obstructive CAD and vascular calcification (CP) in patients with DM offers a possible explanation for this finding³³. Distinct plaque characteristics may reflect different (advanced or less advanced) stages of coronary atherosclerosis, resulting in different responses to lipid-lowering therapy³⁴. Furthermore, previous studies investigating plaque structural stress have demonstrated that microcalcifications contribute to increased stress, leading to plaque rupture and myocardial infarction^{35,36}. These observations explain the poor outcomes of patients with DM without MetS in this study.

Although we found that the EAT volume was not correlated with outcomes, the mean CT value of the EAT was associated with cardiovascular outcomes (Table 3). EAT has been associated with coronary atherosclerosis, calcification, and cardiovascular outcomes, and has attracted attention as a therapeutic target^{18,37–40}. This has motivated the development of imaging methods that enable the assessment of inflammation in the pericoronary adipose tissue, which interacts with the underlying vascular wall by producing proinflammatory adipokines⁴¹. In a

retrospective CCTA study, Oikonomou et al. demonstrated that a fat attenuation index > -70 HU around the epicardial coronary arteries predicts cardiovascular outcomes ⁴². Higher CT attenuation of the EAT indicates an increased inflammatory status, which supports our finding that non-MetS patients with DM have the worst prognosis.

In addition to plaque burden and metabolic disorders, coronary microvascular dysfunction may explain the association between non-MetS patients with DM and poorer outcomes ^{43,44}. In a systematic analysis, Kelshiker et al. demonstrated that patients with DM were more likely to have impaired coronary microvascular function, which presumably indicates a poor prognosis ⁴⁴. Although the assessment of coronary microvascular dysfunction is appreciated, routine non-invasive evaluation methods are not available in daily clinical practice. Noninvasive assessment of the coronary plaque burden and metabolic phenotypes allows for further risk stratification of symptomatic patients undergoing CCTA.

Study limitations

This study included a relatively small number of patients, and the event rates during follow-up were relatively low ($< 5\%$). Our findings should be interpreted with caution since the DM with MET group was significantly older than the other groups with more obstructive CAD. Further studies are required to confirm these findings. Furthermore, although a unified definition is needed, the criteria for abdominal obesity vary among races ⁴⁵. In the present study, we used quantitative VAT values obtained from CT scans to define abdominal obesity. Lastly, we did not perform laboratory tests such as HOMA-IR to measure insulin resistance, which is associated with inflammation ⁴⁶ and plaque vulnerability ⁸. Instead, we calculated the TyG index and reported its significant association with the primary endpoint, independent of LAP volume $> 4\%$

(HR for TyG index, 1.78; 95% CI, 1.10–2.89; $p = 0.019$) (Model 1, in the supplementary Table 1).

Conclusions

Individuals with DM alone have a significantly higher risk of developing MACE than those with MetS. This indicates that DM is an independent predictor of ASCVD events irrespective of the presence of obstructive CAD or high-risk plaque volume.

Acknowledgements

Not applicable

Sources of Funding

None

Disclosures

The authors declare that they have no competing interests.

Supplemental Material

Supplementary table 1

References

1. Powell-Wiley TM, Poirier P, Burke LE, Després JP, Gordon-Larsen P, Lavie CJ, Lear SA, Ndumele CE, Neeland IJ, Sanders P, St-Onge MP. Obesity and Cardiovascular Disease: A Scientific Statement from the American Heart Association. *Circulation*. 2021;143:E984–E1010.
2. Kramer CK, Zinman B, Retnakaran R. Are metabolically healthy overweight and obesity benign conditions?: A systematic review and meta-analysis. *Ann Intern Med*. 2013;159:758–769.
3. DeMarco VG, Aroor AR, Sowers JR. The pathophysiology of hypertension in patients with obesity. *Nat Rev Endocrinol*. 2014;10:364–376.
4. Eckel N, Li Y, Kuxhaus O, Stefan N, Hu FB, Schulze MB. Transition from metabolic healthy to unhealthy phenotypes and association with cardiovascular disease risk across BMI categories in 90 257 women (the Nurses’ Health Study): 30 year follow-up from a prospective cohort study. *Lancet Diabetes Endocrinol*. 2018;6:714–724.
5. Otsuka K, Fukuda S, Tanaka A, Nakanishi K, Taguchi H, Yoshikawa J, Shimada K, Yoshiyama M. Napkin-ring sign on coronary CT angiography for the prediction of acute coronary syndrome. *JACC Cardiovasc Imaging*. 2013;6:448–457.
6. Williams MC, Kwiecinski J, Doris M, McElhinney P, D’Souza MS, Cadet S, Adamson PD, Moss AJ, Alam S, Hunter A, Shah ASV, Mills NL, Pawade T, Wang C, Weir McCall J, Bonnici-Mallia M, Murrills C, Roditi G, Van Beek EJ, Shaw LJ, Nicol ED, Berman DS, Slomka PJ, Newby DE, Dweck MR, Dey D. Low-Attenuation Noncalcified Plaque on Coronary Computed Tomography Angiography Predicts Myocardial Infarction: Results from the Multicenter SCOT-HEART Trial (Scottish Computed Tomography of the HEART). *Circulation*. 2020;141:1452–1462.

7. Kammerlander AA, Mayrhofer T, Ferencik M, Pagidipati NJ, Karady J, Ginsburg GS, Lu MT, Bittner DO, Puchner SB, Bihlmeyer NA, Meyersohn NM, Emami H, Shah SH, Douglas PS, Hoffmann U. Association of Metabolic Phenotypes With Coronary Artery Disease and Cardiovascular Events in Patients With Stable Chest Pain. *Diabetes Care*. 2021;44:1038–1045.
8. Iguchi T, Hasegawa T, Otsuka K, Matsumoto K, Yamazaki T, Nishimura S, Nakata S, Ehara S, Kataoka T, Shimada K, Yoshiyama M. Insulin resistance is associated with coronary plaque vulnerability: insight from optical coherence tomography analysis. *Eur Hear Journal Cardiovasc Imaging*. 2014;15:284–291.
9. New criteria for “obesity disease” in Japan. *Circ J*. 2002;66:987–992.
10. Matsuzawa Y. Metabolic syndrome--definition and diagnostic criteria in Japan. *J Atheroscler Thromb*. 2005;12:301.
11. Zhao Q, Zhang TY, Cheng YJ, Ma Y, Xu YK, Yang JQ, Zhou YJ. Impacts of triglyceride-glucose index on prognosis of patients with type 2 diabetes mellitus and non-ST-segment elevation acute coronary syndrome: Results from an observational cohort study in China. *Cardiovasc Diabetol*. 2020;19:1–19.
12. Kinoshita M, Yokote K, Arai H, Iida M, Ishigaki Y, Ishibashi S, Umemoto S, Egusa G, Ohmura H, Okamura T, Kihara S, Koba S, Saito I, Shoji T, Daida H, Tsukamoto K, Deguchi J, Dohi S, Dobashi K, Hamaguchi H, Hara M, Hiro T, Biro S, Fujioka Y, Maruyama C, Miyamoto Y, Murakami Y, Yokode M, Yoshida H, Rakugi H, Wakatsuki A, Yamashita S. Japan Atherosclerosis Society (JAS) Guidelines for Prevention of Atherosclerotic Cardiovascular Diseases 2017. *J Atheroscler Thromb*. 2018;25:846–984.

13. Nakamura M, Yaku H, Ako J, Arai H, Asai T, Chikamori T, Daida H, Doi K, Fukui T, Ito T, Kadota K, Kobayashi J, Komiya T, Kozuma K, Nakagawa Y, Nakao K, Niinami H, Ohno T, Ozaki Y, Sata M, Takanashi S, Takemura H, Ueno T, Yasuda S, Yokoyama H, Fujita T, Kasai T, Kohsaka S, Kubo T, Manabe S, Matsumoto N, Miyagawa S, Mizuno T, Motomura N, Numata S, Nakajima H, Oda H, Otake H, Otsuka F, Sasaki K-I, Shimada K, Shimokawa T, Shinke T, Suzuki T, Takahashi M, Tanaka N, Tsuneyoshi H, Tojo T, Une D, Wakasa S, Yamaguchi K, Akasaka T, Hirayama A, Kimura K, Kimura T, Matsui Y, Miyazaki S, Okamura Y, Ono M, Shiomi H, Tanemoto K. JCS/JSCVS 2018 Guideline on Revascularization of Stable Coronary Artery Disease. *Circ J.* 2022;86:477–588.
14. Umemura S, Arima H, Arima S, Asayama K, Dohi Y, Hirooka Y, Horio T, Hoshida S, Ikeda S, Ishimitsu T, Ito M, Ito S, Iwashima Y, Kai H, Kamide K, Kanno Y, Kashihara N, Kawano Y, Kikuchi T, Kitamura K, Kitazono T, Kohara K, Kudo M, Kumagai H, Matsumura K, Matsuura H, Miura K, Mukoyama M, Nakamura S, Ohkubo T, Ohya Y, Okura T, Rakugi H, Saitoh S, Shibata H, Shimosawa T, Suzuki H, Takahashi S, Tamura K, Tomiyama H, Tsuchihashi T, Ueda S, Uehara Y, Urata H, Hirawa N. The Japanese Society of Hypertension Guidelines for the Management of Hypertension (JSH 2019). *Hypertens Res.* 2019;42:1235–1481.
15. Araki E, Goto A, Kondo T, Noda M, Noto H, Origasa H, Osawa H, Taguchi A, Tanizawa Y, Tobe K, Yoshioka N. Japanese Clinical Practice Guideline for Diabetes 2019. *Diabetol Int.* 2020;11:165–223.
16. Yamaura H, Otsuka K, Ishikawa H, Shirasawa K, Fukuda D, Kasayuki N. Determinants of Non-calcified Low-Attenuation Coronary Plaque Burden in Patients Without Known

- Coronary Artery Disease: A Coronary CT Angiography Study. *Front Cardiovasc Med*. 2022;9:824470.
17. Hecht HS, Blaha MJ, Kazerooni EA, Cury RC, Budoff M, Leipsic J, Shaw L. CAC-DRS: Coronary Artery Calcium Data and Reporting System. An expert consensus document of the Society of Cardiovascular Computed Tomography (SCCT). *J Cardiovasc Comput Tomogr*. 2018;12:185–191.
18. Nakanishi K, Fukuda S, Tanaka A, Otsuka K, Jissho S, Taguchi H, Yoshikawa J, Shimada K. Persistent epicardial adipose tissue accumulation is associated with coronary plaque vulnerability and future acute coronary syndrome in non-obese subjects with coronary artery disease. *Atherosclerosis*. 2014;237:353–360.
19. Garcia-Garcia HM, McFadden EP, Farb A, Mehran R, Stone GW, Spertus J, Onuma Y, Morel M-A, van Es G-A, Zuckerman B, Fearon WF, Taggart D, Kappetein A-P, Krucoff MW, Vranckx P, Windecker S, Cutlip D, Serruys PW. Standardized End Point Definitions for Coronary Intervention Trials: The Academic Research Consortium-2 Consensus Document. *Eur Heart J*. 2018;39:2192–2207.
20. Shaw LJ, Berman DS, Maron DJ, Mancini GBJ, Hayes SW, Hartigan PM, Weintraub WS, O'Rourke RA, Dada M, Spertus JA, Chaitman BR, Friedman J, Slomka P, Heller G V., Germano G, Gosselin G, Berger P, Kostuk WJ, Schwartz RG, Knudtson M, Veledar E, Bates ER, McCallister B, Teo KK, Boden WE. Optimal medical therapy with or without percutaneous coronary intervention to reduce ischemic burden: results from the Clinical Outcomes Utilizing Revascularization and Aggressive Drug Evaluation (COURAGE) trial nuclear substudy. *Circulation*. 2008;117:1283–1291.

21. Maron DJ, Hochman JS, Reynolds HR, Bangalore S, O'Brien SM, Boden WE, Chaitman BR, Senior R, López-Sendón J, Alexander KP, Lopes RD, Shaw LJ, Berger JS, Newman JD, Sidhu MS, Goodman SG, Ruzyllo W, Gosselin G, Maggioni AP, White HD, Bhargava B, Min JK, Mancini GBJ, Berman DS, Picard MH, Kwong RY, Ali ZA, Mark DB, Spertus JA, Krishnan MN, Elghamaz A, Moorthy N, Hueb WA, Demkow M, Mavromatis K, Bockeria O, Peteiro J, Miller TD, Szwed H, Doerr R, Keltai M, Selvanayagam JB, Steg PG, Held C, Kohsaka S, Mavromichalis S, Kirby R, Jeffries NO, Harrell FE, Rockhold FW, Broderick S, Ferguson TB, Williams DO, Harrington RA, Stone GW, Rosenberg Y. Initial Invasive or Conservative Strategy for Stable Coronary Disease. *N Engl J Med*. 2020;382:1395–1407.
22. Otsuka K, Fukuda S, Tanaka A, Nakanishi K, Taguchi H, Yoshiyama M, Shimada K, Yoshikawa J. Prognosis of vulnerable plaque on computed tomographic coronary angiography with normal myocardial perfusion image. *Eur Heart J Cardiovasc Imaging*. 2014;15:332–340.
23. Reynolds HR, Picard MH, Spertus JA, Peteiro J, Lopez Sendon JL, Senior R, El-Hajjar MC, Celutkienė J, Shapiro MD, Pellikka PA, Kunichoff DF, Anthopolos R, Alfakih K, Abdul-Nour K, Khouri M, Bershtein L, De Belder M, Poh KK, Beltrame JF, Min JK, Fleg JL, Li Y, Maron DJ, Hochman JS. Natural History of Patients with Ischemia and No Obstructive Coronary Artery Disease: The CIAO-ISCHEMIA Study. *Circulation*. 2021;144:1008–1023.
24. Newby DE, Williams MC, Dweck MR. Forget Ischemia: It's All about the Plaque. *Circulation*. 2021;144:1039–1041.

25. Yonetsu T, Kato K, Uemura S, Kim BK, Jang Y, Kang SJ, Park SJ, Lee S, Kim SJ, Jia H, Vergallo R, Abtahian F, Tian J, Hu S, Yeh RW, Sakhuja R, McNulty I, Lee H, Zhang S, Yu B, Kakuta T, Jang IK. Features of coronary plaque in patients with metabolic syndrome and diabetes mellitus assessed by 3-vessel optical coherence tomography. *Circ Cardiovasc Imaging*. 2013;6:665–673.
26. Costanzo P, Cleland JGF, Pellicori P, Clark AL, Hepburn D, Kilpatrick ES, Perrone-Filardi P, Zhang J, Atkin SL. The obesity paradox in type 2 diabetes mellitus: relationship of body mass index to prognosis: a cohort study. *Ann Intern Med*. 2015;162:610–618.
27. Pagidipati NJ, Zheng Y, Green JB, McGuire DK, Mentz RJ, Shah S, Aschner P, Delibasi T, Rodbard HW, Westerhout CM, Holman RR, Peterson ED. Association of obesity with cardiovascular outcomes in patients with type 2 diabetes and cardiovascular disease: Insights from TECOS. *Am Heart J*. 2020;219:47–57.
28. Roubenoff R. Sarcopenia and its implications for the elderly. *Eur J Clin Nutr*. 2000;54 Suppl 3:S40-7.
29. Nishimoto S, Fukuda D, Sata M. Emerging roles of Toll-like receptor 9 in cardiometabolic disorders. *Inflamm Regen*. 2020;40:18.
30. Liu J, Wang S, Cui C, Cai H, Sun R, Pan W, Fang S, Yu B. The association between glucose-related variables and plaque morphology in patients with ST-segment elevated myocardial infarction. *Cardiovasc Diabetol*. 2020;19:109.
31. Libby P. The changing landscape of atherosclerosis. *Nature*. 2021;592:524–533.
32. Tanaka T, Kishi S, Ninomiya K, Tomii D, Koseki K, Sato Y, Okuno T, Sato K, Koike H, Yahagi K, Komiyama K, Aoki J, Tanabe K. Impact of abdominal fat distribution, visceral

fat, and subcutaneous fat on coronary plaque scores assessed by 320-row computed tomography coronary angiography. *Atherosclerosis*. 2019;287:155–161.

33. Jin H-Y, Weir-McCall JR, Leipsic JA, Son J-W, Sellers SL, Shao M, Blanke P, Ahmadi A, Hadamitzky M, Kim Y-J, Conte E, Andreini D, Pontone G, Budoff MJ, Gottlieb I, Lee BK, Chun EJ, Cademartiri F, Maffei E, Marques H, de Araujo Goncalves P, Shin S, Choi JH, Virmani R, Samady H, Stone PH, Berman DS, Narula J, Shaw LJ, Bax JJ, Chinnaiyan K, Raff G, Al-Mallah MH, Lin FY, Min JK, Sung JM, Lee S-E, Chang H-J. The Relationship Between Coronary Calcification and the Natural History of Coronary Artery Disease. *JACC Cardiovasc Imaging*. 2021;14:233–242.

34. Almeida SO, Budoff M. Effect of statins on atherosclerotic plaque. *Trends Cardiovasc Med*. 2019;29:451–455.

35. Kelly-Arnold A, Maldonado N, Laudier D, Aikawa E, Cardoso L, Weinbaum S. Revised microcalcification hypothesis for fibrous cap rupture in human coronary arteries. *Proc Natl Acad Sci U S A*. 2013;110:10741–10746.

36. Doradla P, Otsuka K, Nadkarni A, Villiger M, Karanasos A, Zandvoort LJC van, Dijkstra J, Zijlstra F, Soest G van, Daemen J, Regar E, Bouma BE, Nadkarni SK. Biomechanical Stress Profiling of Coronary Atherosclerosis: Identifying a Multifactorial Metric to Evaluate Plaque Rupture Risk. *JACC Cardiovasc Imaging*. 2020;13:804–816.

37. Iacobellis G. Epicardial adipose tissue in contemporary cardiology. *Nat Rev Cardiol*. 2022;19:593–606.

38. Hwang I-C, Park HE, Choi S-Y. Epicardial Adipose Tissue Contributes to the Development of Non-Calcified Coronary Plaque: A 5-Year Computed Tomography Follow-up Study. *J Atheroscler Thromb*. 2017;24:262–274.

39. Mancio J, Azevedo D, Saraiva F, Azevedo AI, Pires-Morais G, Leite-Moreira A, Falcao-Pires I, Lunet N, Bettencourt N. Epicardial adipose tissue volume assessed by computed tomography and coronary artery disease: a systematic review and meta-analysis. *Eur Hear journal Cardiovasc Imaging*. 2018;19:490–497.
40. Madonna R, Massaro M, Scoditti E, Pescetelli I, De Caterina R. The epicardial adipose tissue and the coronary arteries: Dangerous liaisons. *Cardiovasc Res*. 2019;115:1013–1025.
41. Antonopoulos AS, Sanna F, Sabharwal N, Thomas S, Oikonomou EK, Herdman L, Margaritis M, Shirodaria C, Kampoli A-M, Akoumianakis I, Petrou M, Sayeed R, Krasopoulos G, Psarros C, Ciccone P, Brophy CM, Digby J, Kelion A, Uberoi R, Anthony S, Alexopoulos N, Tousoulis D, Achenbach S, Neubauer S, Channon KM, Antoniades C. Detecting human coronary inflammation by imaging perivascular fat. *Sci Transl Med*. 2017;9. doi:10.1126/scitranslmed.aal2658.
42. Oikonomou EK, Marwan M, Desai MY, Mancio J, Alashi A, Hutt Centeno E, Thomas S, Herdman L, Kotanidis CP, Thomas KE, Griffin BP, Flamm SD, Antonopoulos AS, Shirodaria C, Sabharwal N, Deanfield J, Neubauer S, Hopewell JC, Channon KM, Achenbach S, Antoniades C. Non-invasive detection of coronary inflammation using computed tomography and prediction of residual cardiovascular risk (the CRISP CT study): a post-hoc analysis of prospective outcome data. *Lancet (London, England)*. 2018;392:929–939.
43. Del Buono MG, Montone RA, Camilli M, Carbone S, Narula J, Lavie CJ, Niccoli G, Crea F. Coronary Microvascular Dysfunction Across the Spectrum of Cardiovascular Diseases: JACC State-of-the-Art Review. *J Am Coll Cardiol*. 2021;78:1352–1371.

44. Kelshiker MA, Seligman H, Howard JP, Rahman H, Foley M, Nowbar AN, Rajkumar CA, Shun-Shin MJ, Ahmad Y, Sen S, Al-Lamee R, Petraco R. Coronary flow reserve and cardiovascular outcomes: a systematic review and meta-analysis. *Eur Heart J*. 2022;43:1582–1593.
45. Alberti KGMM, Eckel RH, Grundy SM, Zimmet PZ, Cleeman JI, Donato KA, Fruchart JC, James WPT, Loria CM, Smith SC. Harmonizing the metabolic syndrome: A joint interim statement of the international diabetes federation task force on epidemiology and prevention; National heart, lung, and blood institute; American heart association; World heart federation; International . *Circulation*. 2009;120:1640–1645.
46. Nishimoto S, Fukuda D, Higashikuni Y, Tanaka K, Hirata Y, Murata C, Kim-Kaneyama J-R, Sato F, Bando M, Yagi S, Soeki T, Hayashi T, Imoto I, Sakaue H, Shimabukuro M, Sata M. Obesity-induced DNA released from adipocytes stimulates chronic adipose tissue inflammation and insulin resistance. *Sci Adv*. 2016;2:e1501332.

Table 1. Patient characteristics according to metabolic phenotypes

	Non-MetS		MetS		P value
	DM (-)	DM (+)	DM (-)	DM (+)	
	(n = 306)	(n = 52)	(n = 114)	(n = 58)	
Age	64 (15)	69 (10)	62 (13)	66 (12)	<0.001
Male, n (%)	158 (52%)	32 (62%)	70 (61%)	39 (67%)	0.062
BMI, kg/mm ²	22.7 (3.4)	22.1 (2.8)	26.6 (4.2)	27.7 (4.6)	<0.001
VAT area, cm ²	78 (41)	66 (32)	148 (45)	168 (62)	<0.001
Subcutaneous fat area, cm ²	137 (70)	105 (67)	200 (98)	192 (82)	<0.001
Systolic BP, mmHg	136 (21)	145 (22)	148 (24)	148 (25)	<0.001
Diastolic BP, mmHg	76 (13)	79 (17)	84 (14)	81 (13)	<0.001
Triglyceride, mg/dL	134 (141)	125 (98)	221 (244)	241 (488)	0.001
HDL-C, mg/dL	67 (19)	65 (17)	56 (15)	50 (13)	<0.001
LDL-C, mg/dL	124 (33)	110 (38)	135 (36)	115 (32)	<0.001
Fasting plasma glucose, g/dL	105 (18)	178 (86)	113 (21)	157 (58)	<0.001

Hemoglobin A1c, %	5.6 (0.3)	7.1 (1.7)	5.7 (0.3)	7.2 (1.8)	<0.001
CRP (LogCRP)	0.31 (0.86)	0.20 (0.34)	0.31 (0.71)	0.35 (0.49)	<0.001
TyG index	8.6 (0.56)	9.0 (0.81)	9.1 (0.66)	9.4 (0.79)	<0.001
Hypertension	168 (55%)	44 (85%)	107 (94%)	54 (93%)	<0.001
Diabetes mellitus	0 (0%)	52 (100%)	0 (%)	58 (100%)	-
Dyslipidemia	155 (51%)	36 (69%)	113 (99%)	49 (84%)	<0.001
Current or former tobacco use	38 (12%)	10 (19%)	21 (18%)	10 (17%)	0.306
CKD	72 (24%)	14 (27%)	29 (25%)	16 (28%)	0.883
Suita CVD risk score	23.5 (10.8)	35.5 (9.3)	26.0 (9.0)	33.9 (9.0)	<0.001
Atrial fibrillation	27 (8.8%)	10 (19%)	9 (7.8%)	9 (16%)	0.056
Medications					
ACE inhibitor or ARB	47 (15%)	15 (29%)	34 (30%)	21 (36%)	<0.001
Calcium channel blocker	61 (20%)	18 (35%)	39 (34%)	21 (36%)	0.002
β-blocker	11 (3.5%)	5 (9.6%)	10 (8.8%)	4 (6.8%)	0.102
Statins	39 (13%)	18 (35%)	42 (37%)	23 (40%)	<0.001

561 Values are given as mean \pm standard deviation or number (%).

562 ACE, angiotensin converting enzyme; ARB, angiotensin II receptor blocker; BMI, body mass index; BP, blood pressure; CKD,
 563 chronic kidney disease; CRP, C-reactive protein; CVD, cardiovascular disease; TyG, triglyceride-glucose; VAT, visceral adipose
 564 tissue; HDL, high-density lipoprotein; LDL, low-density lipoprotein; DM (-), without diabetes mellitus; DM (+), with diabetes
 565 mellitus; MetS: metabolic syndrome
 566

Table 2. CCTA findings according to metabolic phenotypes

	Non-MetS		MetS		P value
	DM (-)	DM (+)	DM (-)	DM (+)	
	(n = 306)	(n = 52)	(n = 114)	(n = 58)	
CACS					
CACS 0	153 (50%)	13 (25%)	49 (43%)	14 (24%)	<0.001
CACS 1-100	77 (25%)	13 (25%)	36 (32%)	14 (24%)	0.569
CACS 101-400	54 (18%)	15 (29%)	19 (17%)	17 (29%)	0.056
CACS >400	22 (7.2%)	11 (21%)	10 (8.8%)	13 (22%)	<0.001

Stenosis severity on CCTA

No CAD	64 (21 %)	5 (9.6%)	19 (17%)	5 (8.6%)	0.048
Non-obstructive CAD	131 (43 %)	17 (33%)	51 (45%)	26 (45%)	0.490
Obstructive CAD	111 (36 %)	30 (58%)	44 (39%)	27 (46%)	0.021

Coronary plaque burden

NCP volume, %	19.7 (5.7)	20.6 (6.6)	21.2 (6.9)	23.4 (8.4)	<0.001
LAP volume, %	2.4 (1.7)	3.2 (2.6)	3.3 (2.9)	4.4 (5.0)	0.001
CP volume, %	0.7 (2.4)	2.1 (3.9)	0.9 (2.9)	1.6 (3.7)	0.002
EAT volume, ml	105 (42)	107 (40)	148 (46)	176 (46)	<0.001
EAT mean CT value, HU	-79.0 (5.3)	-77.7 (5.3)	-80.7 (4.0)	-79.5 (5.0)	0.001

Values are given as mean \pm standard deviation or number (%).

CACS, coronary artery calcium score; CAD, coronary artery disease; CP, calcified plaque; DM (-), without diabetes mellitus; DM (+), with diabetes mellitus; EAT, epicardial adipose tissue; MetS, metabolic syndrome; NCP, non-calcified plaque; LAP, low-attenuation plaque; CCTA, coronary computed tomography angiography; CT, computed tomography; HU, Hounsfield unit

Table 3. Unadjusted Cox proportional hazards model to predict the primary outcome

	Non- adjusted HR	95% CI	P	Non-adjusted HR	95% CI	P	Non-adjusted HR	95% CI	P
	All patients (n = 530)			Women (n = 231)			Men (n = 299)		
Age	1.03	1.002–1.070	0.040	1.05	0.98–1.12	0.147	1.03	0.99–1.07	0.085
Male	1.65	0.72–3.88	0.229						
CACS >400	5.09	2.25–11.54	<0.001	8.96	2.14–37.5	0.003	3.68	1.36–9.97	0.010
LAP volume > 4%	6.03	2.70–13.4	<0.001	17.5	3.54–87.2	<0.001	3.52	1.36–9.14	0.009
Obstructive CAD	8.45	2.90–24.60	<0.001	13.2	1.63–107.7	0.016	6.51	1.87–22.6	0.003
Obstructive CAD in LAD	4.40	2.16–8.99	<0.001	3.90	1.31–11.6	0.014	1.98	0.91–4.29	0.082
Obstructive CAD in LCX	2.47	1.10–5.54	0.027	1.53	0.341–6.94	0.575	2.70	1.20–6.09	0.016
Obstructive	3.13	1.43–6.82	0.004	4.05	1.23–13.3	0.021	3.05	1.35–6.88	0.007

CAD in RCA									
EAT volume	1.001	0.993–1.008	0.853	1.01	0.99–1.02	0.138	0.99	0.98–1.005	0.374
EAT mean	1.03	0.99–1.083	0.126	1.02	0.95–1.10	0.442	1.06	0.96–1.18	0.222
CT vale									
BMI	0.45	0.16–1.20	0.111	0.02	0.000–13.16	0.252	0.68	0.24–1.94	0.477
$\geq 25 \text{ kg/m}^2$									
VAT ≥ 100	1.28	0.58–2.80	0.535	1.18	0.28–4.96	0.815	1.16	0.44–3.06	0.761
cm^2									
MetS	1.39	0.627–3.10	0.415	1.62	0.38–6.80	0.506	1.23	0.46–3.23	0.673
DM	3.74	1.70–8.20	0.001	5.22	1.30–20.9	0.019	3.02	1.16–7.83	0.023
Chronic	1.64	0.800–3.39	0.175	1.30	0.403–4.248	0.655	1.89	0.86–4.18	0.113
kidney									
disease									
CRP	1.25	0.70–2.23	0.449	1.34	0.54–3.29	0.522	1.39	0.77–2.52	0.273
TyG index	1.80	1.24–2.62	0.002	2.29	0.89–5.89	0.084	1.34	0.86–2.07	0.192

BMI, body mass index; CACS, coronary artery calcium score; CAD, coronary artery disease; EAT, epicardial adipose tissue; VAT, visceral adipose tissue;

HDL, high-density lipoprotein; LDL, low-density lipoprotein; DM, diabetes mellitus; MetS: metabolic syndrome

CRP was log transformed for analysis.

Table 4. Cox proportional hazards analysis to predict major cardiovascular adverse events

	Predictor	Hazard ratio	95% confidence interval	P value
Model 1	DM	2.68	1.16–6.18	0.02
	(Reference, non-DM)			
	Low-attenuation plaque volume > 4%	5.41	2.42–12.11	<0.001
Model 2	MetS	0.99	0.44–2.23	0.99
	(Reference, non-MetS)			
	Low-attenuation plaque volume > 4%	5.83	2.59–13.10	<0.001
Model 3	DM without MetS	6.89	2.33–20.39	0.001
	(Reference, non-DM without MetS)			
	Low-attenuation plaque volume > 4%	9.66	3.29–28.35	<0.001
Model 4	DM with MetS	1.69	0.56–5.09	0.34
	(Reference, non-DM without MetS)			
	Low-attenuation plaque volume > 4%	9.24	2.82–30.27	<0.001

Model 5	Non-DM without MetS	2.24	0.58–8.53	0.23
	(Reference, non-DM without MetS)			
	Low-attenuation plaque volume > 4%	4.62	1.37–15.51	0.013

Models 1–5 were adjusted by Suita CVD risk score. DM, diabetes mellitus; MetS, Metabolic syndrome

574

575

576

577

578

579

580

581

582

583

584

585

586

587 **Figure Legends**

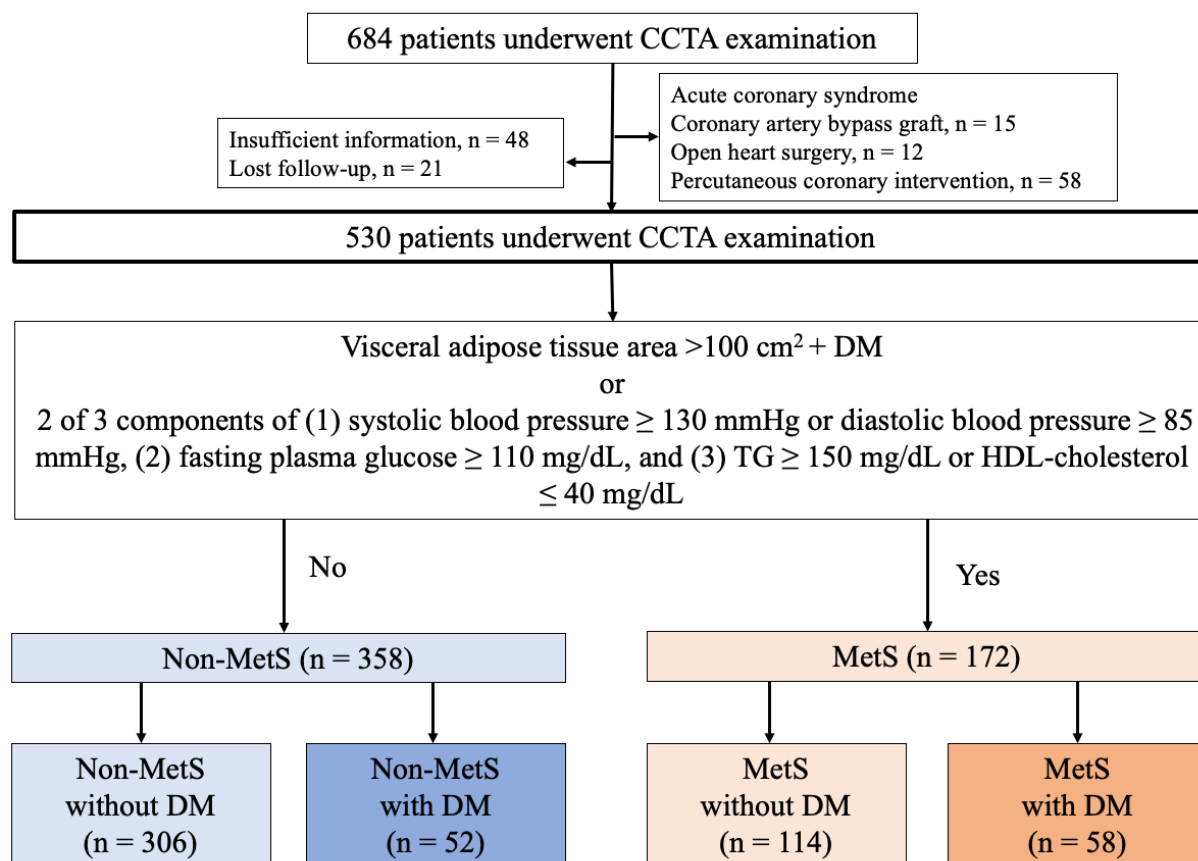
588 **Figure 1. Flow chart of study patients**

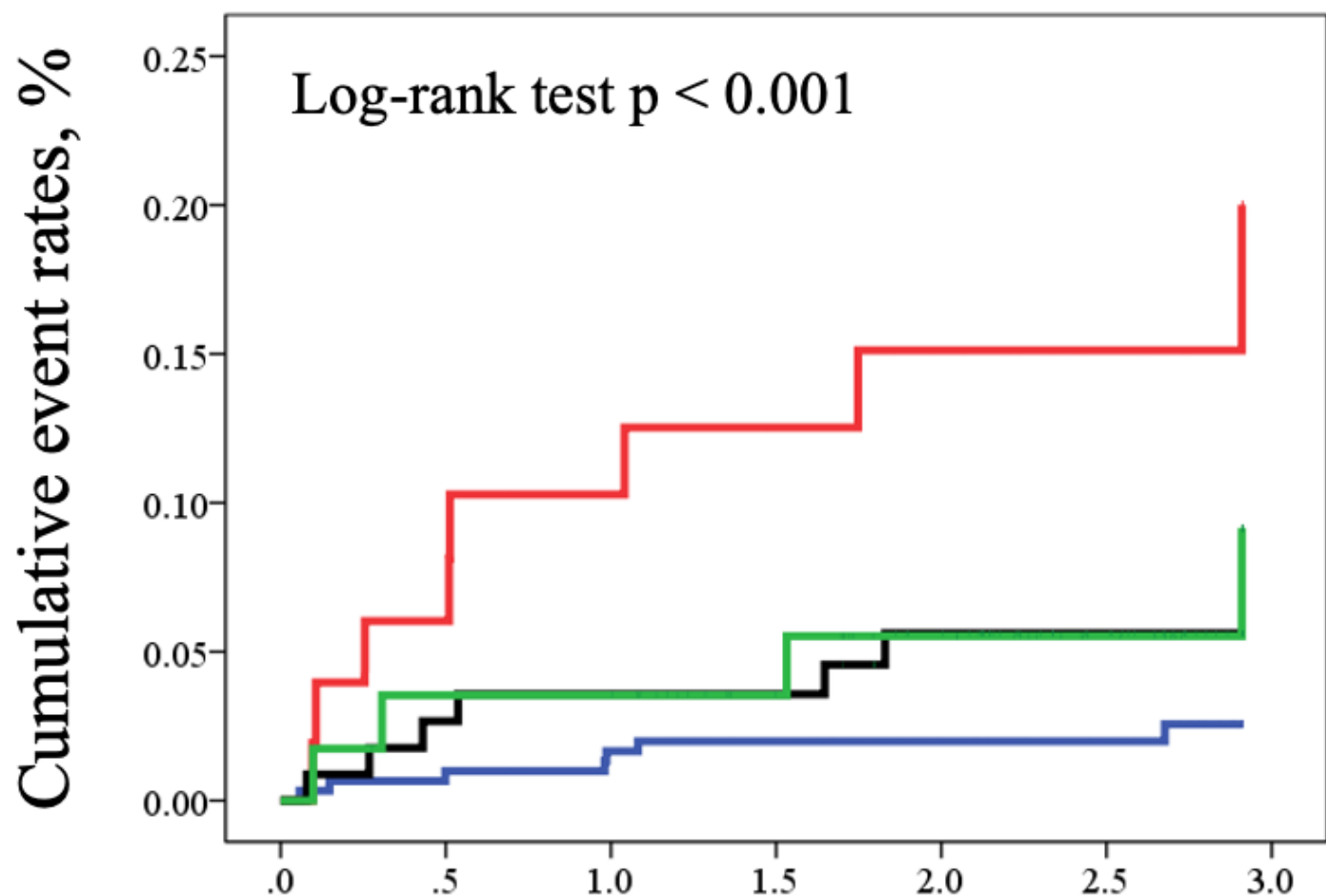
589 A flowchart depicting the 530 patients who underwent CCTA examination and how they were divided into No-MetS and MetS groups.
590 Patients were further categorized into four groups according to the presence or absence of metabolic equivalents (MetS) and DM.
591 CCTA, coronary computed tomography angiography; DM, diabetes mellitus; MetS, metabolic syndrome.

592

593 **Figure 2. Kaplan–Meier analysis for prediction of MACE stratified by metabolic phenotypes**

594 Kaplan–Meier curves demonstrating significant differences between metabolic phenotypes in cumulative event rates, using a
595 composite endpoint of cardiovascular death, acute coronary syndrome, and symptom- or ischemia-driven coronary revascularization.
596 Higher event rates were present in non-MetS patients with DM (log-rank test, $p < 0.001$), followed by MetS with DM (log-rank test, p
597 < 0.001). DM, diabetes mellitus; MetS, metabolic syndrome; MACE, major adverse cardiovascular event.





0 year 1 year 2 year 3 year

Non-MetS without DM	306	296	248	139
Non-MetS with DM	52	44	32	21
MetS without DM	114	109	91	52
MetS with DM	58	54	44	23