

Valentino, Scotton *et al.*

Creating the Pick's disease International Consortium: Association study of *MAPT* H2 haplotype with risk of Pick's disease

Rebecca R Valentino Ph.D.^{1*}, William J Scotton Mbioch., MRCP.^{2*}, Shanu F Roemer M.D.¹, Tammaryn Lashley Ph.D.^{3,4}, Michael G Heckman M.Sc.⁵, Maryam Shoaib Ph.D.⁴, Alejandro Martinez-Carrasco M.Sc.⁶, Nicole Tamvaka B.Sc.¹, Ronald L Walton B.Sc.¹, Matthew C Baker B.Sc.¹, Hannah L Macpherson M.Sc.⁴, Raquel Real Ph.D.⁶, Alexandra I Soto-Beasley M.Sc.¹, Kin Mok Ph.D., FRCP^{4,7,8,9}, Tamas Revesz Ph.D., FRCPATH^{3,4}, Thomas T Warner^{3,6}, Zane Jaunmuktane^{3,6}, Bradley F Boeve M.D.¹⁰, Elizabeth A Christopher M.B.A.¹, Michael DeTure Ph.D.¹, Ranjan Duara M.D.¹¹, Neill R Graff-Radford M.D.¹², Keith A Josephs M.D.¹⁰, David S Knopman M.D.¹⁰, Shunsuke Koga M.D., Ph.D.¹, Melissa E Murray Ph.D.¹, Kelly E Lyons Ph.D.¹³, Rajesh Pahwa M.D.¹³, Joseph E Parisi M.D.¹⁴, Ronald C Petersen M.D., Ph.D.¹⁰, Jennifer Whitwell Ph.D.¹⁵, Lea T Grinberg M.D., Ph.D.¹⁶, Bruce Miller M.D.¹⁶, Athena Schlereth¹⁶, William W Seeley M.D.¹⁶, Salvatore Spina M.D., Ph.D.¹⁶, Murray Grossman M.D., Ph.D.^{17†}, David J Irwin M.D.¹⁷, Edward B Lee M.D., Ph.D.¹⁸, EunRan Suh Ph.D.¹⁸, John Q Trojanowski M.D., Ph.D.^{18†}, Viviana M Van Deerlin M.D., Ph.D.¹⁸, David A Wolk M.D.¹⁷, Theresa R Connors B.S.¹⁹, Patrick M Dooley B.A.¹⁹, Matthew P Frosch M.D., Ph.D.¹⁹, Derek H Oakley M.D.¹⁹, Iban Aldecoa M.D., Ph.D.^{20,21,22}, Mircea Balasa M.D., Ph.D.^{23,24}, Ellen Gelpi M.D., Ph.D.²⁵, Sergi Borrego-Écija M.D.^{23,24,21}, Rosa Maria de Eugenio Huélamo M.D.²⁶, Jordi Gascon-Bayarri M.D.²⁷, Raquel Sánchez-Valle M.D., Ph.D.^{23,24,21}, Pilar Sanz-Cartagena M.D., Ph.D.²⁸, Gerard Piñol-Ripoll M.D., Ph.D.²⁹, Laura Molina-Porcel M.D., Ph.D.^{22,23,24}, Eileen H Bigio M.D.^{30,31}, Margaret E Flanagan M.D.^{30,31}, Tamar Gefen Ph.D.^{30,32}, Emily J Rogalski Ph.D.^{30,32}, Sandra Weintraub Ph.D.^{30,32}, Javier Redding-Ochoa M.D.³³, Koping Chang M.D.³³, Juan C Troncoso M.D.³³, Stefan Prokop M.D.³⁴, Kathy L Newell M.D.³⁵, Bernardino Ghetti M.D.³⁵, Matthew Jones M.D., FRCP.^{36,37}, Anna Richardson B.Sc., FRCP^{36,37}, Andrew C Robinson Ph.D.^{38,39}, Federico Roncaroli M.D.^{38,39}, Julie Snowden Ph.D.^{36,37}, Kieren Allinson FRCPATH.⁴⁰, Oliver Green B.Sc.⁴⁰, James B Rowe Ph.D.^{41,42}, Poonam Singh M.Phil.⁴⁰, Thomas G Beach M.D., Ph.D.⁴³, Geidy E Serrano Ph.D.⁴³, Xena E Flowers B.S.⁴⁴, James E Goldman M.D., Ph.D.⁴⁵, Allison C Heaps M.Sc.⁴⁴, Sandra P Leskinen M.A.⁴⁴, Andrew F Teich M.D., Ph.D.^{46,44}, Sandra E Black M.D., FRCP.⁴⁷, Julia L Keith M.D., FRCP.⁴⁸, Mario Masellis M.D., Ph.D., FRCP.⁴⁷, Istvan Bodi FRCPATH.^{49,50}, Andrew King FRCPATH.^{49,50}, Safa-Al Sarraj

Valentino, Scotton *et al.*

FRCP^{49,50}, Claire Troakes Ph.D.⁵⁰, Glenda M Halliday Ph.D.⁵¹, John R Hodges M.D.⁵¹, Jillian J Kril Ph.D.⁵², John B Kwok Ph.D.⁵¹, Olivier Piguet Ph.D.⁵³, Marla Gearing Ph.D.⁵⁴, Thomas Arzberger M.D.⁵⁵, Sigrun Roeber M.D.⁵⁶, Johannes Attems M.D.⁵⁷, Christopher M Morris Ph.D.⁵⁷, Alan J Thomas Ph.D.⁵⁷, Bret M. Evers M.D., Ph.D.⁵⁸, Charles L White, 3rd M.D.⁵⁸, Naguib Mechawar Ph.D.⁵⁹, Anne A Sieben MD, Ph.D.^{60,61,62,63}, Patrick P Cras MD., Ph.D.^{60,61,64}, Bart B De Vil M.Sc., Eng.^{60,61,64}, Peter Paul P.P. De Deyn MD, Ph.D.⁶⁵, Charles Duyckaerts M.D., Ph.D.^{66†}, Isabelle Le Ber M.D., Ph.D.^{67,68}, Danielle Seihean M.D., Ph.D.⁶⁹, Sabrina Turbant-Leclerc Ph.D.⁷⁰, Ian R MacKenzie M.D.⁷¹, Catriona McLean M.D., Ph.D.^{72,73}, Matthew D Cykowski M.D.⁷⁴, John F Ervin⁷⁵, Shih-Hsiu J Wang M.D., Ph.D.⁷⁵, Caroline Graff Ph.D.^{76,77}, Inger Nennesmo M.D.^{78,79}, Rashed M Nagra Ph.D.⁸⁰, James Riehl B.S.⁸¹, Gabor G Kovacs M.D., Ph.D.^{82,83}, Giorgio Giaccone M.D.⁸⁴, Benedetta Nacmias Ph.D.^{85,86}, Manuela Neumann M.D.^{87,88}, Lee-Cyn Ang M.D.^{89,90}, Elizabeth C Finger M.D.^{91,92}, Cornelis Blauwendraat Ph.D.⁹³, Mike A Nalls Ph.D.^{93,94,95}, Andrew B Singleton Ph.D.⁹³, Dan Vitale M.Sc.^{93,94,95}, Cristina Cunha Ph.D.⁹⁶, Agostinho Carvalho Ph.D.^{96,97}, Zbigniew K Wszolek M.D.¹², Huw R Morris Ph.D., FRCP⁶, Rosa Rademakers Ph.D.^{98,1}, John A Hardy Ph.D.^{7,99,4,100}, Dennis W Dickson M.D.¹, Jonathan D Rohrer Ph.D., FRCP^{2*}, Owen A Ross Ph.D.^{1,101*}

¹Department of Neuroscience, Mayo Clinic, Jacksonville, FL 32224, USA, ²Dementia Research Centre, Department of Neurodegenerative Disease, University College London, Queen Square Institute of Neurology, London, UK, ³Queen Square Brain Bank for Neurological Disorders, University College London, Queen Square Institute of Neurology London, UK, ⁴Department of Neurodegenerative Disease, University College London, Queen Square Institute of Neurology, London, UK, ⁵Division of Clinical Trials and Biostatistics, Mayo Clinic, Jacksonville, FL 32224, USA, ⁶Department of Clinical and Movement Neurosciences, University College London, Queen Square Institute of Neurology, London, UK, ⁷UK Dementia Research Institute at UCL, London, UK, ⁸Division of Life Science, State Key Laboratory of Molecular Neuroscience, Molecular Neuroscience Center, The Hong Kong University of Science and Technology, Clear Water Bay, Kowloon, Hong Kong, China, ⁹Hong Kong Center for Neurodegenerative Diseases, Hong Kong Science Park, Hong Kong, China., ¹⁰Department of Neurology, Mayo Clinic, Rochester, MN 55905, USA, ¹¹Wien Center for Alzheimer's Disease and Memory Disorders, Mount Sinai Medical Center Miami Beach, FL, ¹²Department of Neurology, Mayo Clinic,

Valentino, Scotton *et al.*

Jacksonville, FL 32224, USA, ¹³University of Kansas Medical Center, Parkinson's Disease & Movement Disorder Division, Kansas City, KS. 66160, ¹⁴Laboratory Medicine and Pathology, Mayo Clinic, Rochester, MN 55905, USA, ¹⁵Department of Radiology, Mayo Clinic, Rochester, MN 55905, USA, ¹⁶Department of Neurology, Memory and Aging Center, University of California San Francisco, San Francisco, CA, USA, ¹⁷Department of Neurology, Perelman School of Medicine at the University of Pennsylvania, Philadelphia, PA 19104, USA, ¹⁸Department of Pathology and Laboratory Medicine, Perelman School of Medicine at the University of Pennsylvania, Philadelphia, PA 19104, USA, ¹⁹Neuropathology Service, C.S. Kubik Laboratory for Neuropathology, Massachusetts General Hospital/Harvard Medical School, Boston, MA, USA, ²⁰Pathology, BDC, Hospital Clinic de Barcelona, Barcelona, Spain, ²¹University of Barcelona, Barcelona, Spain, ²²Neurological Tissue Bank, Biobanc-Hospital Clínic-FRCB-IDIBAPS, Barcelona, Spain, ²³Alzheimer's Disease and other Cognitive Disorders Unit, Neurology Department, Hospital Clinic, Barcelona, Spain, ²⁴Barcelona Clinical Research Foundation-August Pi i Sunyer Biomedical Research Institute (FRCB-IDIBAPS), Barcelona, Spain, ²⁵Division of Neuropathology and Neurochemistry, Department of Neurology, Medical University of Vienna, Vienna, Austria., ²⁶Hospital de Palamós, Carrer Hospital, 36, 17230 Palamós, Girona, Spain, ²⁷Servei de Neurologia, Hospital Universitari de Bellvitge. Institut d'Investigació Biomèdica de Bellvitge (Idibell). L'Hospitalet de Llobregat, Spain., ²⁸Hospital de Mataró, Carr. de Cirera, 230, 08304 Mataró, Barcelona, Spain., ²⁹Unitat Trastorns Cognitius (Cognitive Disorders Unit), Clinical Neuroscience Research, IRBLleida, Santa Maria University Hospital, Lleida, Spain, ³⁰Mesulam Center for Cognitive Neurology & Alzheimer's Disease, Northwestern University Feinberg School of Medicine, Chicago, IL, USA, ³¹Department of Pathology, Northwestern University Feinberg School of Medicine, Chicago, IL, USA, ³²Department of Psychiatry and Behavioral Sciences, Northwestern University Feinberg School of Medicine, Chicago, IL, USA, ³³Johns Hopkins School of Medicine, Baltimore, MD, USA, ³⁴Fixel Institute for Neurological Diseases, University of Florida, Gainesville, FL, USA., ³⁵Department of Pathology and Laboratory Medicine, Indiana University School of Medicine, Indianapolis, Indiana 46202, USA., ³⁶Cerebral Function Unit, Manchester Centre for Clinical Neurosciences, Salford Royal NHS Foundation Trust, UK., ³⁷Division of Neuroscience, School of Biological Sciences, University of Manchester, UK., ³⁸Division of Neuroscience, Faculty of Biology, Medicine and Health, School of Biological Sciences, The University of Manchester,

Valentino, Scotton *et al.*

Salford Royal Hospital, Salford, M6 8HD, UK., ³⁹Geoffrey Jefferson Brain Research Centre, Manchester Academic Health Science Centre (MAHSC), Manchester, UK., ⁴⁰Histopathology Box 235 Cambridge University Hospital NHS Foundation Trust, Cambridge Biomedical Campus, Hills Road, Cambridge, CB2 0QQ, ⁴¹Cambridge University Department of Clinical Neurosciences and Cambridge University Hospitals NHS Trust, Cambridge, UK, ⁴²Medical Research Council Cognition and Brain Sciences Unit, Cambridge, UK, ⁴³Civin Laboratory of Neuropathology, Banner Sun Health Research Institute, Sun City, AZ 85351, USA, ⁴⁴Taub Institute for Research on Alzheimer's Disease and the Aging Brain, Columbia University, New York, NY, USA, ⁴⁵Department of Pathology and Cell Biology, Columbia University Irving Medical Center, Vagelos College of Physicians and Surgeons, Columbia University, New York, NY 10032, USA., ⁴⁶Department of Pathology and Cell Biology, Columbia University, New York, NY, USA, ⁴⁷Department of Medicine, Division of Neurology, Sunnybrook Health Sciences Centre and University of Toronto, Hurvitz Brain Sciences Research Program, Sunnybrook Research Institute, ⁴⁸Laboratory Medicine and Molecular Diagnostics, Sunnybrook Health Sciences Centre, and Laboratory Medicine and Pathobiology, University of Toronto, ⁴⁹Clinical Neuropathology Department, King's College Hospital NHS Foundation Trust, London, UK, ⁵⁰London Neurodegenerative Diseases Brain Bank, Department of Basic and Clinical Neuroscience, Institute of Psychiatry, Psychology and Neuroscience, King's College London, London, UK, ⁵¹University of Sydney Brain and Mind Centre and Faculty of Medicine and Health School of Medical Sciences, ⁵²University of Sydney Faculty of Medicine and Health School of Medical Sciences, ⁵³University of Sydney Brain and Mind Centre and Faculty of Science School of Psychology, ⁵⁴Dept. of Pathology and Laboratory Medicine, Dept. of Neurology, and Goizueta Alzheimer's Disease Center Brain Bank; Emory University School of Medicine, Atlanta, GA USA, ⁵⁵Department of Psychiatry and Psychotherapy, University Hospital, Ludwig-Maximilians-University Munich, Germany, ⁵⁶Center for Neuropathology and Prion Research, Ludwig-Maximilians-University Munich, Germany, ⁵⁷Newcastle Brain Tissue Resource, Translational and Clinical Research Institute, Newcastle University, Newcastle upon Tyne, NE4 5PL, UK, ⁵⁸University of Texas Southwestern Medical Center, Dallas, TX 75390, ⁵⁹Douglas Hospital Research Centre, ⁶⁰Laboratory of Neurology, Translational Neurosciences, Faculty of Medicine and Health Sciences, University of Antwerp, Antwerp, Belgium., ⁶¹IBB-NeuroBiobank BB190113, Born Bunge Institute, Antwerp, Belgium, ⁶²Department of Pathology,

Valentino, Scotton *et al.*

Antwerp University Hospital, Antwerp, Belgium, ⁶³Department of Neurology, Ghent University Hospital, Ghent University, Belgium, ⁶⁴Department of Neurology, Antwerp University Hospital - UZA, Antwerp, Belgium, ⁶⁵Laboratory of Neurochemistry and Behavior, Experimental Neurobiology Unit, University of Antwerp, Universiteitsplein 1, 2610 Antwerpen, Belgium, ⁶⁶Laboratoire de Neuropathologie Escourolle, Hôpital de la Salpêtrière, AP-HP, & Alzheimer Prion Team, ICM, 47 Bd de l'Hôpital, 75651 CEDEX 13 Paris, France., ⁶⁷Inserm U1127, CNRS UMR 7225, Sorbonne Université, Paris Brain Institute (ICM), Hôpital Pitié-Salpêtrière, Paris, France, ⁶⁸Centre de référence des démences rares ou précoces, Hôpital Pitié-Salpêtrière, Paris, France, ⁶⁹Laboratoire de Neuropathologie Escourolle, Hôpital de la Salpêtrière, AP-HP, & ICM, 47 Bd de l'Hôpital, 75651 CEDEX 13 Paris, France., ⁷⁰Inserm U1127, CNRS UMR 7225, Sorbonne Université, Paris Brain Institute (ICM) Hôpital Pitié-Salpêtrière, Paris, France., ⁷¹Department of Pathology and Laboratory Medicine, University of British Columbia, Vancouver, BC Canada V6T 2B5, ⁷²Department of Anatomical Pathology Alfred Heath, Melbourne, Victoria, 3004, Australia, ⁷³Victorian Brain Bank, The Florey Institute of Neuroscience of Mental Health, Parkville, Victoria, 3052, Australia, ⁷⁴Department of Pathology and Genomic Medicine, Houston Methodist Research Institute and Weill Cornell Medicine, Houston, TX., ⁷⁵Department of Neurology, Duke University Medical Center, Durham, USA, ⁷⁶Division for Neurogeriatrics, Centre for Alzheimer Research, Department of Neurobiology, Care Sciences and Society, Karolinska Institutet, Stockholm, Sweden., ⁷⁷Unit for Hereditary Dementias, Karolinska University Hospital Solna, Stockholm, Sweden., ⁷⁸Dept of laboratory Medicine Huddinge Karolinska Institutet, Stockholm Sweden., ⁷⁹Dept of Pathology, Karolinska University Hospital Solna, Stockholm, Sweden., ⁸⁰Human Brain and Spinal Fluid Resource Center, Brentwood Biomedical Research Institute, Los Angeles, CA, United States, ⁸¹UCLA - Sepulveda, Los Angeles, CA, ⁸²Tanz Centre for Research in Neurodegenerative Disease (CRND) and Department of Laboratory Medicine and Pathobiology, University of Toronto, Toronto, ON, Canada., ⁸³Laboratory Medicine Program and Krembil Brain Institute, University Health Network, Toronto, ON, Canada., ⁸⁴Fondazione IRCCS Istituto Neurologico Carlo Besta, Milan, Italy, ⁸⁵Department of Neuroscience, Psychology, Drug Research and Child Health University of Florence, Florence, Italy, ⁸⁶IRCCS Fondazione Don Carlo Gnocchi, Florence, Italy, ⁸⁷Molecular Neuropathology of Neurodegenerative Diseases, German Center for Neurodegenerative Diseases (DZNE), Tübingen, Germany, ⁸⁸Department of Neuropathology,

Valentino, Scotton *et al.*

University Hospital of Tübingen, Tübingen, Germany, ⁸⁹Department of Pathology and Laboratory Medicine, London Health Sciences Centre, London, ON, Canada, ⁹⁰Schulich School of Medicine and Dentistry, Western University, London, ON, Canada, ⁹¹Department of Clinical Neurological Sciences, Western University, London, ON, Canada., ⁹²Schulich School of Medicine and Dentistry, Western University, London, ON, Canada., ⁹³Laboratory of Neurogenetics, National Institute on Aging, National Institutes of Health, Bethesda, MD, USA, ⁹⁴Center for Alzheimer's and Related Dementias, National Institutes of Health, Bethesda, MD, USA, ⁹⁵Data Tecnica International LLC, Washington, DC, USA, ⁹⁶Life and Health Sciences Research Institute (ICVS), School of Medicine, University of Minho, Braga, Portugal, ⁹⁷ICVS/3B's - PT Government Associate Laboratory, Braga/Guimarães, Portugal, ⁹⁸VIB-UAntwerp Center for Molecular Neurology, University of Antwerp, Antwerp 2610, Belgium, ⁹⁹Reta Lila Weston Institute, University College London, Queen Square Institute of Neurology, London, UK, ¹⁰⁰Institute for Advanced Study, The Hong Kong University of Science and Technology, Hong Kong, China, ¹⁰¹Department of Clinical Genomics, Mayo Clinic, Jacksonville, FL 32224, USA

*denotes joint authorship

† Deceased

Running title: *MAPT* H2 and Pick's disease

Keywords: Pick's disease, *MAPT*, haplotype, genetics, tau, frontotemporal dementia

***Corresponding author's contact information:**

Owen A. Ross, Ph.D.

Department of Neuroscience,

Mayo Clinic,

4500 San Pablo Road,

Jacksonville, FL 32224,

Tel: (904)-953-6280,

Fax: (904)-953-7370

Email: ross.owen@mayo.edu

Abstract word count: 266/300

Manuscript word count: 3338/3500

References: 30

No. of tables/figures: 6

Valentino, Scotton *et al.*

Abstract

Background: Pick's disease (PiD) is a rare and predominantly sporadic form of frontotemporal dementia that is classified as a primary tauopathy. PiD is pathologically defined by argyrophilic inclusion Pick bodies and ballooned neurons in the frontal and temporal brain lobes. PiD is characterised by the presence of Pick bodies which are formed from aggregated, hyperphosphorylated, 3-repeat tau proteins, encoded by the *MAPT* gene. The *MAPT* H2 haplotype has consistently been associated with a decreased disease risk of the 4-repeat tauopathies of progressive supranuclear palsy and corticobasal degeneration, however its role in susceptibility to PiD is unclear. The primary aim of this study was to evaluate the association between *MAPT* H2 and risk of PiD.

Methods: We established the Pick's disease International Consortium (PIC) and collected 338 (60.7% male) pathologically confirmed PiD brains from 39 sites worldwide. 1,312 neurologically healthy clinical controls were recruited from Mayo Clinic Jacksonville, FL (N=881) or Rochester, MN (N=431). For the primary analysis, subjects were directly genotyped for *MAPT* H1-H2 haplotype-defining variant rs8070723. In secondary analysis, we genotyped and constructed the six-variant *MAPT* H1 subhaplotypes (rs1467967, rs242557, rs3785883, rs2471738, rs8070723, and rs7521).

Findings: Our primary analysis found that the *MAPT* H2 haplotype was associated with increased risk of PiD (OR: 1.35, 95% CI: 1.12-1.64 P=0.002). In secondary analysis involving H1 subhaplotypes, a protective association with PiD was observed for the H1f haplotype (0.0% vs. 1.2%, P=0.049), with a similar trend noted for H1b (OR: 0.76, 95% CI: 0.58-1.00, P=0.051). The 4-repeat tauopathy risk haplotype *MAPT* H1c was not associated with PiD susceptibility (OR: 0.93, 95% CI: 0.70-1.25, P=0.65).

Interpretation: The PIC represents the first opportunity to perform relatively large-scale studies to enhance our understanding of the pathobiology of PiD. This study demonstrates that in contrast to its protective role in 4R tauopathies, the *MAPT* H2 haplotype is associated with an increased risk of PiD. This finding is critical in directing isoform-related therapeutics for tauopathies.

Funding: See funding section

Valentino, Scotton *et al.*

Introduction

Pick's disease (PiD) is a rare and predominantly sporadic subtype of frontotemporal lobar degeneration (FTLD) which represents approximately 5% of all dementias worldwide. Although there are no clinical diagnostic criteria for PiD, it typically develops in individuals approximately 55 years of age and presents with behavioral change, impaired cognition and occasionally motor difficulties (1-7). PiD is a relatively rapidly progressive disease and patients die approximately 10 years after disease onset (1-6). Symptomatic treatments are available, but currently no treatments exist that can delay disease onset or progression. A definite diagnosis of PiD requires autopsy confirmation.

Neuropathologically, PiD is classified by severe frontotemporal, knife-edge like cortical atrophy macroscopically, and microscopically the presence of ballooned neurons and argyrophilic, tau-immunoreactive inclusion "Pick bodies" in frontal and temporal regions (1). Characteristic Pick bodies consist of hyperphosphorylated 3-repeat (3R) tau aggregate proteins which are encoded by the *MAPT* gene on chromosome 17 (7, 8), and therefore PiD is classified as a 3R tauopathy. *MAPT* codes for six major tau isoforms in the adult human brain, and this is determined by alternative splicing of exons 2, 3, and 10 influencing the number of repeat domains in the N-terminus and C-terminus (9). More specifically, alternative splicing leading to exon 10 exclusion results in 3-repeat units in the microtubule binding C-terminal domain, generating 3R tau proteins (10).

Rare mutations in *MAPT* have been identified in a handful of PiD cases or individuals with PiD-like pathology (11-14); however, these data are inconsistent as larger, independent cohorts of PiD cases do not report *MAPT* mutations (15). The *MAPT* gene also has two well characterized common haplotypes, H1 and H2, which developed from a 900kb ancestral genetic inversion event (16). Not only has *MAPT* H1 consistently been associated with an increased risk of 4-repeat (4R) primary tauopathies such as progressive supranuclear palsy (PSP) and corticobasal degeneration (CBD), but the H1 haplotype is also the strongest genetic risk factor for both diseases (17, 18). To date, this observation has not been replicated in 3R tauopathy of PiD which may be due to the limited available sample size (19, 20).

Due to its rare prevalence and the inability to diagnose it clinically in life, PiD is an understudied neurodegenerative disease, and its genetic etiology is unknown. As previously mentioned, the few studies of *MAPT* haplotype in PiD that have been conducted were small and underpowered. Moreover, limited access to 3R tauopathy samples has stalled research advancement in understanding how *MAPT* haplotypes and isoforms influence disease risk/pathology and has prevented progress in developing isoform-specific therapies. To address this, we established the Pick's disease International Consortium (PIC) and are collecting data from pathologically confirmed PiD cases from sites worldwide. Whilst also developing an in-depth consortium database of clinical, pathological, and demographic

Valentino, Scotton *et al.*

information, the primary aim of the PIC was to evaluate the association of the *MAPT* H1/H2 haplotype with disease risk, age of onset (AAO), and disease duration (DD) in PiD.

Methods

Pick's disease International Consortium (PIC)

Due to the rare and understudied landscape of PiD, researchers at Mayo Clinic Brain Bank in Jacksonville, FL, USA (MC) and the UK Dementia Research Institute at University College London Queen Square Institute of Neurology (UCL) led efforts to establish the world's first international consortium for Pick's disease (PIC). MC led the effort for identifying and sourcing PiD cases from North American regions and UCL was responsible for collecting PiD cases from European and Australasian territories. Inclusion criteria were a neuropathologic diagnosis of PiD with Pick bodies and available frozen brain tissue. Exclusion criteria were frontotemporal dementia due to etiology other than a 3R predominant tauopathy or lack of frozen specimens. IRB approval was obtained for the studies at both collection hubs (MC and UCL) and each individual brain bank had institutional IRB approval for collection and sharing of specimens.

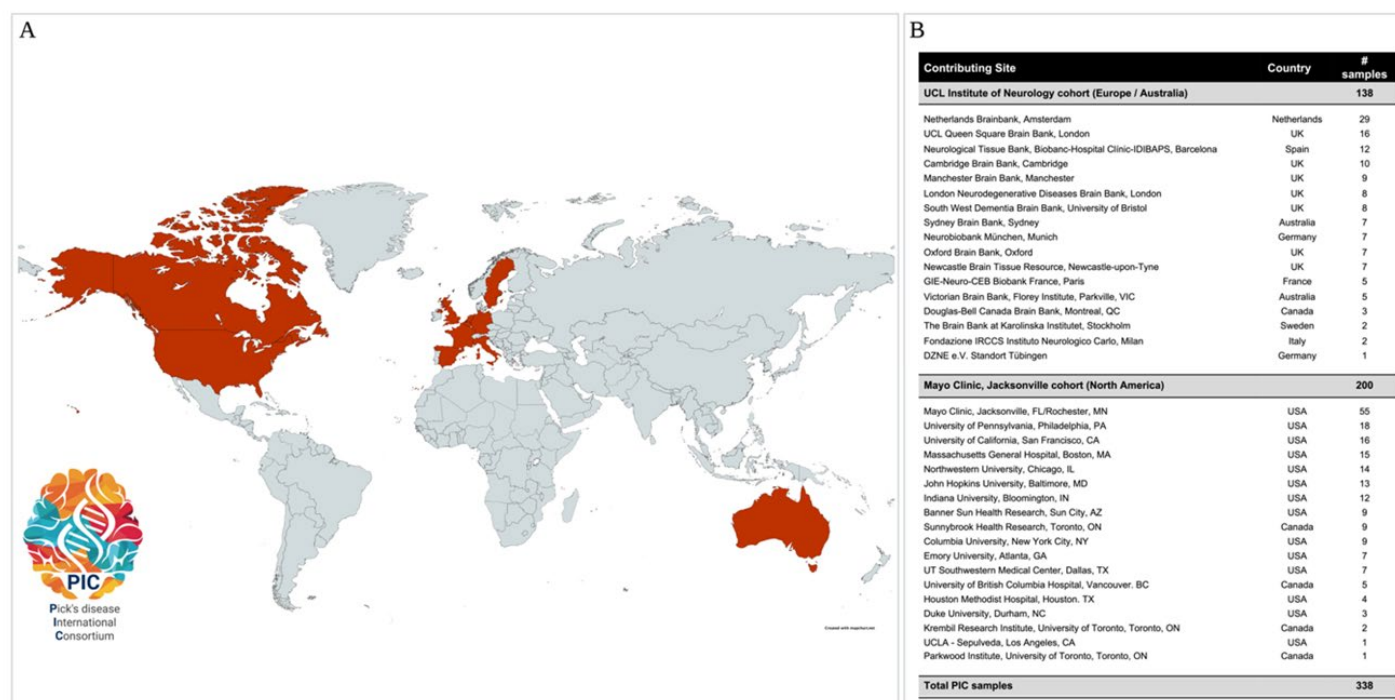


Figure 1: Global map and table reporting countries and recruitment sites that have contributed Pick's disease tissues to the Pick's disease International Consortium (PIC) to date. Dark red= countries that have collected and donated Pick's disease tissues.

Valentino, Scotton *et al.*

Study Subjects

In the current study, 338 neuropathologically confirmed PiD cases were recruited from 39 sites worldwide (**Figure 1**), at the two major collection hubs in North America (MC) and Europe (UCL). Frozen brain tissue from cerebellum or prefrontal cortex were obtained from each case. All subjects were self-reported unrelated and Caucasian, non-Hispanic (genetically confirmed by array data). Baseline demographic information was collected for all subjects (AAO and age at death (AAD) for PiD patients, age at blood collection for controls, and sex). DD was calculated from the difference between AAD and AAO for a subset of 309 PiD cases. Subject characteristics are summarized in **Table 1**. In addition to basic demographic information, the PIC also collected information related to family histories, clinical outcomes (e.g. behavioral and language impairments, presence/absence of parkinsonism, upper and lower motor neurone deficits, Mini-Mental State Examination and Clinical Dementia Rating), and pathological information (e.g. Thal phase, Braak stage, and brain weight,) for each individual case, as well as noting whether other tissues and brain imaging data were available. Cases were removed if a rare *MAPT* mutation was identified. Peripheral blood-derived DNA was provided from 1,312 controls from Mayo Clinic in Jacksonville, FL (N=881) or Rochester, MN (N=431). Control subjects were deemed neurologically healthy by neurologists at Mayo Clinic.

Variable	Pick's disease series (N=338)	Controls (N=1,312)
Age (years)	69 (40, 100)	69 (45, 92)
Age of disease onset (years)	58 (33, 80)	N/A
Disease duration (years)	10 (2, 25)	N/A
Sex		
Male	205 (60.7%)	611 (46.6%)
Female	133 (39.3%)	701 (53.4%)

Table 1: Summary of subject characteristics.

The sample median (minimum, maximum) is given for age. Age represents age at death in Pick's disease cases and age at blood draw in controls. Age at disease onset and disease duration information was unavailable for N=29 Pick's disease cases.

Valentino, Scotton *et al.*

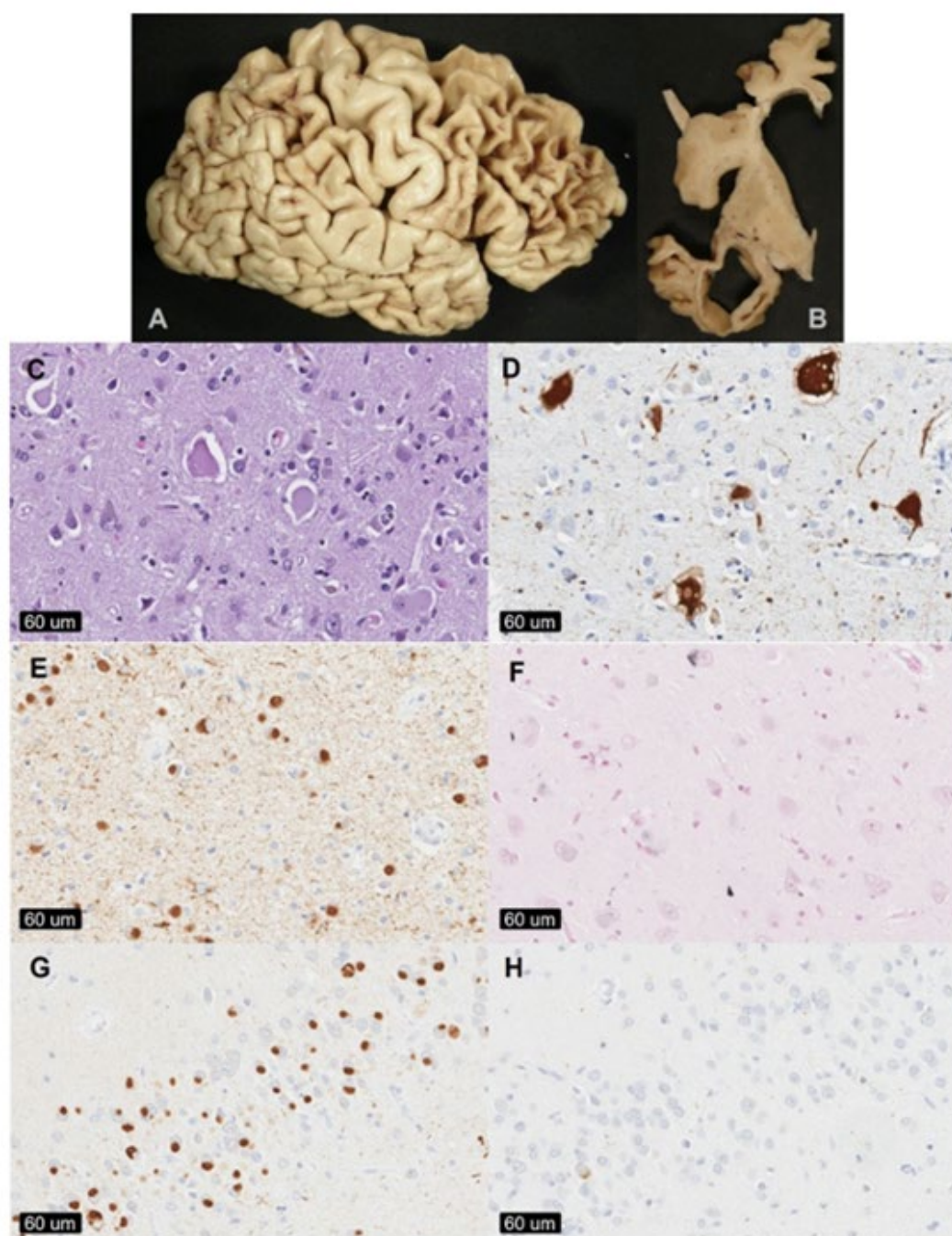


Figure 2: Pathological assessments of Pick's disease brains at Mayo Clinic Brain Bank for Neurodegenerative Diseases in Jacksonville, FL, USA. [A] The superior and dorsolateral surfaces of the frontal cortex and temporal lobe often show severe circumscribed 'knife-edge' edge atrophy. [B] Coronal sections of the brain show markedly dilated ventricles, cortical atrophy, and hippocampal affection. [C] Enlarged, amorphous ballooned neurons. [D] In regions with severe astrogliosis and neuronal loss, staining against α B-crystallin may highlight ballooned neurons. [E] Phosphorylated tau antibodies highlight spherical cytoplasmic neuronal inclusions and may also show marked neuropil staining, especially in cases with concomitant Alzheimer's type pathology. [F] Gallyas silver stains may stain isolated glial lesions or neurofibrillary tangles; however, Pick bodies do not show any significant degree of silver staining. [G] 3R tau staining of the dentate fascia of the hippocampus show strong immunoreactivity of spherical inclusions. [H] 4R tau staining of the dentate fascia show negative spherical inclusion, although isolated neurofibrillary tangles may stain positive. Images are from Pick cases submitted to MCI.]

Valentino, Scotton *et al.*

Established methods for the neuropathological diagnosis of Pick's disease

Currently, diagnostic consensus criteria for the neuropathologic diagnosis of PiD do not exist. In many diagnostic centers a neuropathological diagnosis of PiD relies on the presence of argyrophilic, spherical neuronal inclusions using traditional silver staining methods, such as Bielschowsky's or Gallyas-Braak silver staining methods. Both silver staining methods stain Alzheimer's disease (AD) neurofibrillary tangles, yet spherical inclusions in PiD are positive with Bielschowsky and negative on the Gallyas-Braak silver staining method (21). This differentiation in silver staining methods is helpful especially for centers that do rely on immunohistochemistry against phosphorylated tau (p-tau) and do not have isotype specific tau antibodies incorporated in the diagnostic work-up as AD and PiD neuropathologic changes may co-exist in the same patient. Immunohistochemistry against epitope-specific tau antibodies further helps to distinguish between AD and PiD features. Since both spherical inclusions and neurofibrillary tangles stain positive with antibodies against phosphorylated tau (p-tau), epitope-specific antibodies highlight selective 3R tau spherical inclusions in PiD, which is further validated by antibodies to 4R tau where these spherical inclusions stain negative. This distinction is particularly obvious in the granule cell neurons of the hippocampal dentate fascia, which may be used solely to diagnose PiD.

PIC diagnostic algorithm for pathology confirmed Pick's disease

Since a harmonized neuropathologic diagnostic scheme does not exist it became pivotal to the PIC aims to establish a defined set of operational diagnostic criteria within PIC that would ensure that submitted PiD cases reflect a 3R-predominant tauopathy. All cases submitted to the PIC had an archival neuropathologic diagnosis of PiD (i.e. the presence of argyrophilic or p-tau positive spherical inclusions) and underwent neuropathological assessments at their respective brain banks. Due to the multi-site nature of the PIC, each participating center were requested to submit and report respective 3R and 4R tau staining results for each individual PiD case to the PIC. To fulfill PIC criteria all cases had to confirm the presence of Pick bodies and must have had 3R tau positive and 4R tau negative inclusions. The additional presence of ballooned neurons and negative Gallyas staining of inclusions was preferred to confirm diagnosis. If 3R/4R tau immunohistochemistry had not been performed at their respective brain banks, centers submitted routinely cut sections (up to seven microns) of unstained, formalin fixed paraffin embedded tissue from hippocampal, frontal or temporal lobe regions for 3R and 4R tau immunohistochemistry assessments (**Figure 2**). Cases submitted to Mayo Clinic Brain Bank for Neurodegenerative Diseases were evaluated by two PIC neuropathologists (DWD, SFR) and cases submitted to UCL were examined by two PIC investigators (WS, TL) which included a PIC

Valentino, Scotton *et al.*

neuropathologist (TL), all using the PIC diagnostic algorithm. All sections were stained using standard immunohistochemical methods (22) (**Figure 3**).

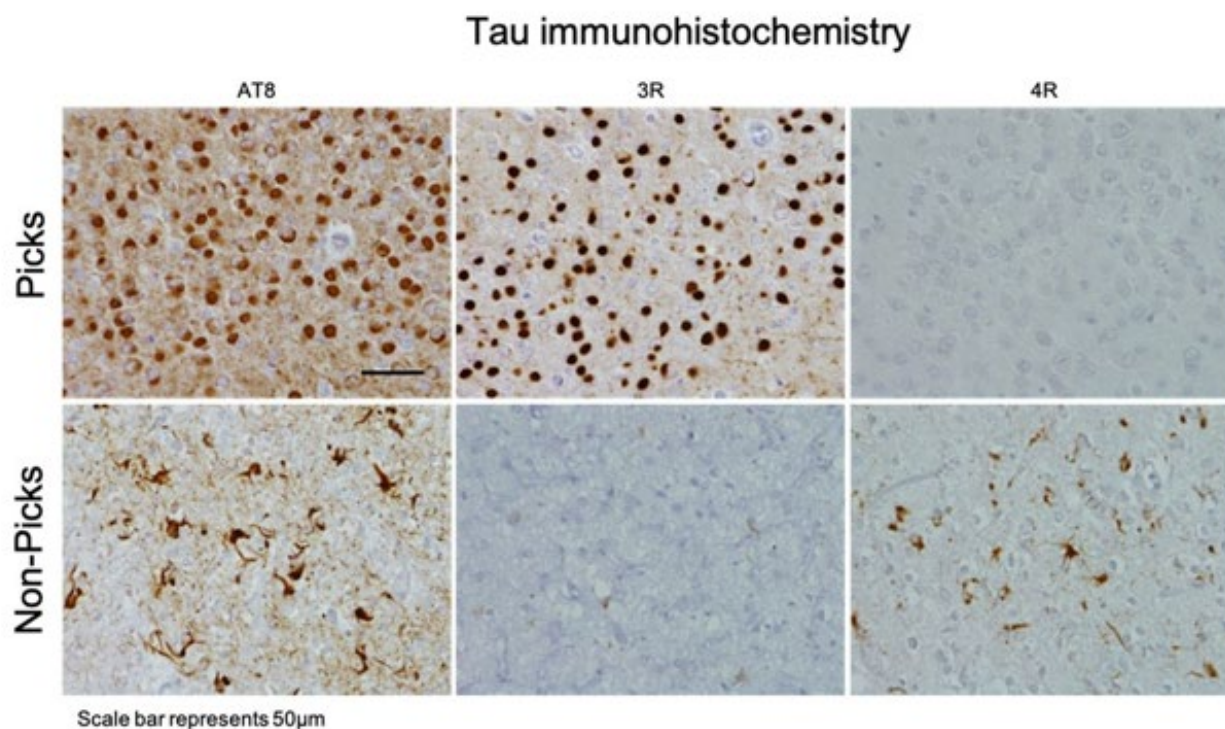


Figure 3: Pathological assessments of Pick's disease brains at Queen Square Brain Bank for Neurological Disorders (QSBB), UCL Queen Square Institute of Neurology, London, UK. The top row shows a Pick's disease case that was positive for AT8 and 3R-tau immunoreactive Pick bodies. The bottom row shows a non-Pick's disease case (that was originally pathologically diagnosed with Pick's disease) that was positive for AT8 and 4R-tau but negative for 3R tau immunoreactive Pick bodies. Images are from Pick cases submitted to UCL.

DNA Preparation

DNA was extracted from each subject at their respective collection site. At MC, genomic DNA was extracted from frozen brain tissue from PiD cases and from peripheral blood lymphocytes from control subjects using an automated or manual method. Automated DNA extractions were carried out using Autogen Tissue Kit reagents according to manufacturer protocols and were processed on the Autogen FlexSTAR+ (both Autogen, Holliston, MA, USA). At QSBB, total genomic DNA was extracted from frozen brain tissue using the Kleargene XL Nucleic Acid Purification kit (LGC, Hoddlesdon, Herts, UK). DNA quality was assessed with a NanoDrop 8000 spectrophotometer (ThermoFisher Scientific, USA) and absorbance ratios for 260/280 and 260/230 were between 1.7-2.2 and 2.0-2.2, respectively.

Valentino, Scotton *et al.*

SNP Genotyping

The *MAPT* H2 haplotype-tagging variant rs8070723 was genotyped in all cases and controls. In addition, the five common *MAPT* variants (rs1467967, rs242557 [the H1C haplotype-tagging variant], rs3785883, rs2471738, and rs7521) which along with rs8070723 define H1-subhaplotypes were genotyped to assess *MAPT* subhaplotype structure (23, 24). North American cases and all controls were genotyped using TaqMan SNP genotyping assays on an ABI 7900HT Fast Real-Time PCR system (Applied Bio-systems, Foster City, CA, USA), as previously described (25). *MAPT* variants were genotyped according to manufacturer instructions (primer sequences available upon request). Genotypes were called using TaqMan Genotyper Software v1.3 (Applied Bio-systems, Foster City, CA, USA). European and Australasian cases were genotyped using KASP™ SNP genotyping assays on the Hydrocyler2 system (LGC Genomics, Hoddesdon, Herts, UK) according to manufacturer instructions, and were read on a PHERAStar FSX plate reader (BMG Labtech, Cary, NC, USA). Genotypes were called using Kraken KlusterKaller™ software (LGC Genomics, Hoddesdon, Herts, UK). Genotype call rates for all subjects were 100% for each variant. There was no evidence of a departure from Hardy-Weinberg equilibrium in controls for any of the six variants (all $P > 0.01$ after Bonferroni correction). All cases were assessed for population stratification using available whole SNP genotyping data. After standard genotyping data quality control steps, we performed a principal components analysis (PCA), merged all cases with the European (CEU) HapMap reference dataset, and identified any cases of non-white European ancestry which were excluded from further analysis. Allele and genotype frequencies for each variant are detailed in **Supplementary Table 1**.

Statistical Analysis

Single-variant associations with risk of PiD were evaluated using logistic regression models that were adjusted for age and sex. Odds ratios (Ors) and 95% confidence intervals (Cis) were estimated and correspond to each additional minor allele. Single-variant associations with AAO and DD in PiD patients were examined using linear regression models that were adjusted for sex and series (AAO analysis) or sex, AAO, and series (DD analysis). Regression coefficients (referred to as β) and 95% Cis were estimated and are interpreted as the increase in the mean AAO or DD corresponding to each additional copy of the minor allele. For all single-variant associations, analysis involving rs8070723 (the H2-tagging variant) was considered as the primary analysis, with results for the five remaining variants considered as secondary and presented for completeness.

Associations between six-variant *MAPT* haplotypes and risk of PiD were assessed using score tests for association under a logistic regression framework (26), where tests were adjusted for age and sex. Ors and 95% Cis were estimated and correspond to each additional copy of the given haplotype.

Valentino, Scotton *et al.*

In analysis of PiD patients, associations of six-variant *MAPT* haplotypes with AAO and DD were assessed using score tests for association under a linear regression framework (26), where tests were adjusted for sex and series (AAO analysis) or sex, AAO, and series (DD analysis). B-coefficients and 95% CIs were estimated and are interpreted as the increase in the mean AAO or DD corresponding to each additional copy of the given haplotype. Haplotypes occurring in <1% of subjects in a specific analysis were excluded from that analysis.

We adjusted for multiple testing separately for each outcome measure that was examined (presence of PiD, AAO, or DD). P-values <0.05 were considered as statistically significant in the primary analysis involving the *MAPT* rs8070723 variant. In secondary analysis assessing associations between *MAPT* haplotypes and outcomes, p-values < 0.0028 (18 tests) were considered as statistically significant after Bonferroni correction in the disease-association analysis, and p-values < 0.0031 (16 tests) were considered as statistically significant in the AAO and DD analyses. P-values ≤ 0.05 were considered as significant in all remaining analysis. All statistical tests were two-sided. Statistical analyses were performed using R Statistical Software (version 4.1.2; R Foundation for Statistical Computing, Vienna, Austria).

Role of the funding source

Study sponsors (for individual brain bank collections) had no such involvement with this study design, in the collection, analysis, and interpretation of data, in the writing of the report, or in the decision to submit the paper for publication. All authors confirm that they had full access to all the data in this study and accept responsibility of publication submission.

Results

A total of 338 pathologic-defined PiD cases were identified across 39 independent recruitment sites to establish the first PiD consortium (PIC). There was a significant association between the *MAPT* rs8070723 H2 allele and an increased risk of PiD in the overall series (OR: 1.35, 95% CI: 1.12-1.64, P=0.0021), with minor allele frequencies of 29.0% in the 338 PiD patients and 23.0% in the 1,312 controls. *MAPT* rs8070723 was not associated with AAO (β : -0.54, 95% CI: -1.94 to 0.87, P=0.45) or DD (β : 0.25, 95% CI: -0.46 to 0.96, P=0.50). Single-variant associations with PiD, AAO and DD are shown for all six *MAPT* variants used to define *MAPT* haplotypes in **Supplementary Tables 2 and 3**. Of note, there was not a notable association between rs242557 and risk of PiD (OR: 0.94, 95% CI: 0.79-1.12, P=0.51, **Supplementary Table 2**).

Valentino, Scotton *et al.*

In secondary analysis, an evaluation of associations between six-variant *MAPT* haplotypes and risk of PiD is displayed in **Table 2**. As with the single-variant analysis, the H2 haplotype was associated with an increased risk of PiD (OR: 1.34, 95% CI: 1.11-1.63, $P=0.0028$); the slight difference between the two numerical estimates is due to the two different analysis approaches. Additionally, a nominally significant ($P<0.05$) protective association was noted for the rare H1f haplotype (0.0% in PiD, 1.2% in controls, $P=0.049$), with a slightly weaker finding noted for H1b (OR: 0.76, 95% CI: 0.58-1.00, $P=0.051$). There were no other notable associations between *MAPT* haplotypes and risk of PiD (all $P\geq 0.15$, **Table 2**).

Haplotype	MAPT variant						Haplotype frequency (%)		Association with Pick's disease	
	rs1467967	rs242557	rs3785883	rs2471738	rs8070723	rs7521	Pick's disease patients (N=338)	Controls (N=1312)	OR (95% CI)	P-value
H1b	G	G	G	C	A	A	13.1	16.0	0.76 (0.58, 1.00)	0.051
H1c	A	A	G	T	A	G	10.2	11.3	0.93 (0.70, 1.25)	0.65
H1d	A	A	G	C	A	A	7.4	7.1	0.99 (0.68, 1.42)	0.94
H1e	A	G	G	C	A	A	9.8	9.0	1.03 (0.74, 1.42)	0.87
H1f	G	G	A	C	A	A	0.0	1.2	N/A ¹	0.049
H1g	G	A	A	C	A	A	0.7	1.1	0.43 (0.11, 1.65)	0.22
H1h	A	G	A	C	A	A	4.0	4.1	0.95 (0.57, 1.57)	0.85
H1i	G	A	G	C	A	A	3.9	4.4	0.98 (0.60, 1.61)	0.95
H1l	A	G	A	C	A	G	3.6	3.0	1.11 (0.67, 1.84)	0.69
H1m	G	A	G	C	A	G	2.9	2.9	1.00 (0.56, 1.78)	0.99
H1o	A	A	A	C	A	A	1.1	2.3	0.53 (0.23, 1.26)	0.15
H1p	G	G	G	T	A	G	1.1	1.5	0.82 (0.33, 2.04)	0.66
H1r	A	G	G	T	A	G	0.7	1.1	0.63 (0.20, 2.01)	0.44
H1u	A	A	G	C	A	G	2.4	2.4	1.11 (0.58, 2.11)	0.75
H1v	G	G	A	T	A	G	2.2	1.2	1.50 (0.70, 3.21)	0.30
H1x	G	A	A	T	A	G	1.3	1.3	1.06 (0.44, 2.56)	0.91
H1y	A	A	A	T	A	G	1.4	1.6	0.85 (0.34, 2.07)	0.71
H2	A	G	G	C	G	G	28.5	22.7	1.34 (1.11, 1.63)	0.0028

Table 2: Associations between MAPT haplotypes and risk of Pick's disease.

ORs, 95% CIs, and p-values result from score tests of association that were adjusted for age and sex. ¹Indicates a haplotype that was not observed in Pick's disease patients, making estimation of an OR impossible. P-values <0.0028 are considered as statistically significant after applying a Bonferroni correction for multiple testing. OR=odds ratio; CI=confidence interval.

Associations of *MAPT* haplotypes with AAO and DD in PiD patients are shown in **Table 3**. None of the six-variant *MAPT* haplotypes were significantly associated with AAO or DD after correcting for multiple testing ($P<0.0031$ considered significant). However, nominally significant associations were observed with AAO for H1b (β : 2.66, 95% CI: 0.63 to 4.70, $P=0.011$), H1i (β : -3.66, 95% CI: -6.83 to -0.48, $P=0.025$) and H1u (β : -5.25, 95% CI: -10.42 to -0.07, $P=0.048$), and with a shorter DD for H1x (β : -3.73, 95% CI: -6.98 to -0.48, $P=0.025$).

Haplotype	Haplotype frequency (%), N=309	Association with age of disease onset		Association with disease duration	
		β (95% CI)	P-value	β (95% CI)	P-value
H1b	13.3%	2.66 (0.63, 4.70)	0.011	-0.03 (-1.07, 1.02)	0.96
H1c	10.0%	1.63 (-0.61, 3.86)	0.15	0.08 (-1.05, 1.22)	0.88
H1d	7.2%	0.79 (-1.79, 3.38)	0.55	-0.91 (-2.21, 0.39)	0.17
H1e	9.3%	0.52 (-1.94, 2.98)	0.68	0.52 (-0.72, 1.76)	0.41
H1h	4.0%	2.03 (-1.57, 5.64)	0.27	-0.45 (-2.27, 1.37)	0.63
H1i	4.1%	-3.66 (-6.83, -0.48)	0.025	-0.90 (-2.53, 0.72)	0.28
H1l	3.5%	-1.75 (-5.42, 1.92)	0.35	0.43 (-1.42, 2.28)	0.65
H1m	3.1%	-1.25 (-5.33, 2.84)	0.55	0.94 (-1.11, 3.00)	0.37
H1o	1.2%	0.05 (-6.91, 7.00)	0.99	0.03 (-3.47, 3.52)	0.99
H1p	1.0%	-5.65 (-12.60, 1.30)	0.11	0.17 (-3.36, 3.69)	0.93
H1u	2.2%	-5.25 (-10.42, -0.07)	0.048	-2.40 (-5.03, 0.22)	0.074
H1v	2.1%	-1.74 (-6.61, 3.13)	0.48	1.91 (-0.54, 4.35)	0.13
H1x	1.4%	-5.39 (-11.84, 1.07)	0.10	-3.73 (-6.98, -0.48)	0.025
H1y	1.5%	-0.70 (-6.93, 5.54)	0.83	1.82 (-1.31, 4.95)	0.26
H1z	1.6%	-1.81 (-8.02, 4.40)	0.57	-0.08 (-3.20, 3.05)	0.96
H2	29.4%	-0.62 (-2.03, 0.79)	0.39	0.22 (-0.49, 0.93)	0.54

Table 3: Associations of MAPT haplotype with age of disease onset and disease duration in Pick's disease cases.

β values, 95% CIs, and p-values result from score tests of association that were adjusted for sex and series (age of disease onset analysis) or sex, age of disease onset, and series (disease duration analysis). β values are interpreted as the change in the mean value of the given outcome (age of disease onset or disease duration) corresponding to each additional copy of the given haplotype. P-values <0.0031 are considered as statistically significant after applying a Bonferroni correction for multiple testing. β =regression coefficient; CI=confidence interval.

Valentino, Scotton *et al.*

Discussion

PiD is a rare, predominantly sporadic 3R tauopathy that presents primarily as a behavioral or language variant of frontotemporal dementia (1-6). Little is known regarding the etiology or underlying pathobiology of the disease. To date, no genetic variation has been shown to associate with disease risk, although three cases with PiD or PiD-like pathology have been suggested to be caused by rare *MAPT* mutations (11-14). In the present study we have shown that the common *MAPT* H2 haplotype, strongly protective in 4R-tauopathy, is associated with an increased risk of PiD (3R tauopathy). This was only possible by establishing and creating a global consortium (PIC) to increase the number of available pathologically-defined PiD cases. Previous early genetic studies were underpowered with only 34 cases and 33 cases respectively (19, 20); a ten-fold increase in sample size was needed to establish *MAPT* H2 as a risk factor for in PiD.

Previous research in frontotemporal dementia linked to chromosome 17 with tau pathology (FTDP17t) has clearly demonstrated that mutations in the 5' splice site of *MAPT* exon 10 can increase the incorporation of the exon into the mRNA and increase 4R isoform production, emphasizing how important exon 10 alternative splicing regulation is as dysregulation influences tangle formation and neurodegeneration outcome (16, 27). Given the association of *MAPT* H2 with a 3R-tauopathy, and its protection in 4R-tauopathy, it is possible that the *MAPT* H1 and H2 haplotypes increase the expression of 4R and 3R tau respectively. Previous studies have attempted to investigate the haplotype influence on *MAPT*/tau expression although results have been inconclusive, given the presence of six different isoforms in human brain defining specific isoform expression remains complex (28-30). The genetic predisposition herein described would appear to support the hypothesis that the pathologic effects of the H1-H2 haplotypes is via isoform specific expression differences. This may have implications in the determination of therapeutic strategies that have focused on either overall lowering of tau expression or specifically targeting the lowering of 4R-tau or increasing 3R-tau isoforms. The overall balance of the 3R and 4R forms of tau would appear to be important for the primary tauopathies but does not in itself explain the mixed pathology observed in AD, although it is tempting to suggest an overall increased expression of total tau may be underlying the mixed pathology.

In addition to providing evidence that the *MAPT*-H2 haplotype is associated with an increased risk of PiD, we observed nominally significant associations that were observed with risk of PiD, AAO, and DD, however these will require validation. This study has strengths in the assembled large PiD series of patients and the direct genotyping of the H1-H2 haplotype, but there still remains several limitations which are important to note. The possibility of a type II error (i.e. false-negative finding) is important to consider, and we cannot conclude that there is no true association between a given haplotype and risk of PiD simply due to a non-significant p-value in this study. Additionally, we were

Valentino, Scotton *et al.*

unable to regress out genetic principal components, and so it is possible that population stratification could have had an influence on our results. However, we used the case genetic principal components to exclude any cases of non-European ancestry and our control MAPT H1-H2 frequencies were in keeping with published data and the general population frequency, in fact the highest population control frequency in gnomAD is 23.8% very similar to our 23% (31). Ongoing studies looking at genome-wide disease associations in PiD with available genome-wide SNP data for controls support the current findings (data not shown).

In summary, PiD is a rare and understudied disease with a devastating impact on both patients and their families. Through collaboration and building of the PIC, we have for the first time a rare opportunity to engage in studies that may tease out the underlying pathobiology in PiD. As a primary tauopathy, there is the possibility that the identification of genetic variables, such as *MAPT* H2, involved in PiD pathology will inform on other more common tau-related disorders, PSP, CBD, and potentially AD. Larger scale unbiased studies to explore genome-wide or structural genetic variation in PiD are now warranted. Furthermore, resolving the genetic determinants of PiD may help in establishing diagnostic criteria and elucidating the dysfunctional pathways may direct future therapeutic intervention strategies.

Valentino, Scotton *et al.*

Data sharing

The PIC have built a database that contains detailed demographic, clinical, and pathological information for deidentified participants with Pick's disease. Basic demographic information (e.g. age at onset, age at death, disease duration, sex, and ethnicity), family history, clinical history (e.g. behavioral and language impairments, presence of parkinsonism, upper and lower motor deficits, MMSE, and CDR), and pathological observations (e.g. immunohistochemical staining records, Thal phase, Braak stage, TDP-43 type, post-mortem intervals, brain weight, and vascular pathology), other available tissues, genetic data and clinical imaging data are available for each subject upon request. All requests must be submitted to Owen A. Ross (email: ross.owen@mayo.edu) or Jonathan Rohrer (email: j.rohrer@ucl.ac.uk).

Conflicts of Interest

M.A.N. and D.V.'s participation in this project was part of a competitive contract awarded to Data Tecnica International LLC by the National Institutes of Health to support open science research. M.A.N. also currently serves on the scientific advisory board for Character Bio Inc. and Neuron23 Inc.

Acknowledgements

This paper is dedicated to the memory of John Q. Trojanowski, M.D. Ph.D., who was an inspirational researcher and neuropathologist at the University of Pennsylvania and pioneered discoveries in tauopathies that resulted in improvements of diagnosis and available treatments. John was a leader in neuroscience and his presence and insights will be thoroughly missed by scientists worldwide. We would also like to acknowledge our dear colleagues Charles Duyckaerts and Murray Grossman, eminent neuropathologists at Sorbonne University, Paris and University of Pennsylvania, USA. Charles Duyckaerts sadly passed away during our manuscript writing after a long battle with cancer. We sincerely thank all those who contributed towards our research, particularly the patients and families who donated brain and blood tissues. Without their generous donations the PIC would not exist, and this study would not have been possible. We also thank Audrey Strongosky for processing research subjects' consents, drawing bloods, and handling collection procedures, as well as Linda G. Rousseau, Virginia R. Phillips, and Monica Castanedes-Casey for their continuous commitment, technical support, and teamwork.

Mayo Clinic: SK receives funding from CurePSP and the Rainwater Charitable Foundation, the State of Florida Ed and Ethel Moore Alzheimer's Disease Research Program (22A05), and Mayo Clinic Alzheimer's Disease Research Center (ADRC).. MEM receives funding from the State of Florida (20A22), LEADS Neuropathology Core (U01AG057195), and the Chan Zuckerberg Initiative Collaborative Pairs Grant, which are paid directly to the institute. KAJ is supported by National Institutes

Valentino, Scotton *et al.*

of Health (NIH) grants (R01 DC014942, R01, R01-AG37491, R01-NS89757, RF1-NS112153 and RF1-NS120992). BFB is supported by National Institutes of Health (NIH) grants (P30 AG62677, U19 AG063911, U01 NS100620, U19 AG071754); the Robert H. and Clarice Smith and Abigail Van Buren Alzheimer's Disease Research Program of the Mayo Foundation; the Lewy Body Dementia Association; the Mayo Clinic Dorothy and Harry T. Mangurian Jr. Lewy Body Dementia Program; the Little Family Foundation; the Turner Family Foundation. ZKW is partially supported by the NIH/NIA and NIH/NINDS (1U19AG063911, FAIN: U19AG063911), Mayo Clinic Center for Regenerative Medicine, the gifts from the Donald G. and Jodi P. Heeringa Family, the Haworth Family Professorship in Neurodegenerative Diseases fund, and The Albertson Parkinson's Research Foundation. He serves as PI or Co-PI on Biohaven Pharmaceuticals, Inc. (BHV4157-206), Neuraly, Inc. (NLY01-PD-1), and Vigil Neuroscience, Inc. (VGL101-01.002, VGL101-01.201, PET tracer development protocol, and Csf1r biomarker and repository project) grants. He serves as Co-PI of the Mayo Clinic APDA Center for Advanced Research and as an external advisory board member for the Vigil Neuroscience, Inc. OAR and DWD are both supported by National Institute of Neurological Disorders and Stroke (NINDS) Tau Center without Walls Program (U54-NS100693) and NIH (UG3-NS104095). DWD receives research support from the NIH (P30 AG062677; U54-NS100693; P01-AG003949), CurePSP, the Tau Consortium, and the Robert E. Jacoby Professorship. OAR is supported by NIH (P50-NS072187; R01-NS078086; U54-NS100693; U54-NS110435), Department of Defence (DOD) (W81XWH-17-1-0249) The Michael J. Fox Foundation, The Little Family Foundation, the Mangurian Foundation Lewy Body Dementia Program at Mayo Clinic, the Turner Family Foundation, Mayo Clinic Foundation, and the Center for Individualized Medicine. Mayo Clinic is also an LBD Center without Walls (U54-NS110435). Samples included in this study were clinical controls from Mayo Clinic Rochester and Mayo Clinic Jacksonville as part of the Alzheimer's Disease Research Center (P30 AG062677), and the Mayo Clinic Study of Aging (U01 AG006786) or tissue donations to the Mayo Clinic Brain Bank in Jacksonville which is supported by CurePSP and Mayo Clinic funding.

UCSF: Human tissue samples were provided by the Neurodegenerative Disease Brain Bank at the University of California, San Francisco, which receives funding support from NIH grants P01AG019724 and P50AG023501, the Consortium for Frontotemporal Dementia Research, and the Tau Consortium. LTG and SS receive funding from NIH grants K24053435 and K08AG052648, respectively.

UPenn: ES, JQT, MG, VMVD, DJI, DAW, and EBL all receive funding through NIH - ES: P01-AG017586, P01-AG066597, P30-AG010124, P30-AG072979; JQT: P01-AG017586, P30-AG010124, P30-AG072979; MG: P01-AG017586, P01-AG066597, P30-AG010124, P30-AG072979; VMVD: P01-AG017586, P01-AG066597, P30-AG010124, P30-AG072979; DJI: R01-NS109260, P30-AG010124,

Valentino, Scotton *et al.*

P01-AG066597; DAW: P30-AG010124, P30-AG072979; and EBL: P01-AG017586, P01-AG066597, P30-AG010124, P30-AG072979.

Northwestern: ER, TG, SW, EHB, MEF) receive support from NIA under award numbers R01 AG062566, R01 AG077444, P30 AG13854, P30 AG072977; the National Institute of Deafness and Other Communication Disorders (NIDCD) under award number R01 DC008552; and the National Institute of Neurological Disorders and Stroke (NINDS) under award number R01 NS075075. MEF also receives support from NIA grant K08 AG065463.

Banner: We are grateful to the Banner Sun Health Research Institute Brain and Body Donation Program of Sun City, Arizona for the provision of human biological materials. The Brain and Body Donation Program has been supported by the NINDS (U24 NS072026 National Brain and Tissue Resource for Parkinson's Disease and Related Disorders), the NIA (P30 AG19610 Arizona Alzheimer's Disease Core Center), the Arizona Department of Health Services (contract 211002, Arizona Alzheimer's Research Center), the Arizona Biomedical Research Commission (contracts 4001, 0011, 05-901 and 1001 to the Arizona Parkinson's Disease Consortium), and the Michael J. Fox Foundation for Parkinson's Research.

Emory: MG is supported by NIH grant P30 AG066511. MDC receives funding from NIH grant RF1 NS118584.

Columbia: We thank the Columbia University Alzheimer's Disease Research Center (ADRC), funded by NIH grant P30AG066462, to S.A. Small (P.I.), and A. Teich from New York Brain Bank for providing biological samples and associated information. The ADRC is supported by the National Institutes of Health, through grant number P30AG066462. ACH receives NIH support through P30AG066462.

Duke: The Bryan Brain Bank and Biorepository of the Duke-UNC ADRC and SJW are supported by the NIA grant P30AG072958

MGH: Brain samples were provided by Neuropathology Core of the Massachusetts Alzheimer Disease Research Center, which receives funding support from NIH grant P30 AG062421, which also supported TRC, PMD, MPF and DHO. DHO was also received support from the Dr. and Mrs. E. P. Richardson, Jr, Fellowship in Neuropathology.

Indiana: BG is supported by the US National Institutes of Health (grant P30-AG010133).

NIH: This research was supported in part by the Intramural Research Program of the NIH, National Institute on Aging (NIA), National Institutes of Health, Department of Health and Human Services; project number ZO1 AG000535, as well as the National Institute of Neurological Disorders and Stroke. This work utilized the computational resources of the NIH HPC Biowulf cluster. (<http://hpc.nih.gov>).

Western University: We also acknowledge the DEC Brain & Biobank.

Valentino, Scotton *et al.*

Krembil: GGK receives funding from The Rossy Foundation and Edmond J. Safra Philanthropic Foundation.

McGill: The Douglas-Bell Canada Brain Bank is funded by Healthy Brains for Healthy Lives (CFREF), the Réseau Québécois sur le suicide, le troubles de l'humeur et les troubles associés (FRQ-S), and by Brain Canada. NM is funded by a CIHR project grant.

UCL: WJS is a Wellcome Trust Clinical PhD Fellowship (220582/Z/20/Z). JDR is a Miriam Marks Brain Research UK Senior Fellowship and has received funding from an MRC Clinician Scientist Fellowship (MR/M008525/1) and the NIHR Rare Disease Translational Research Collaboration (BRC149/NS/MH). TL receives an Alzheimer's Research UK senior fellowship. HRM is supported by research grants from Parkinson's UK, Cure Parkinson's Trust, PSP Association, CBD Solutions, Drake Foundation, Medical Research Council, and Michael J Fox Foundation. RR is funded by ASAP.

KCL: The London Neurodegenerative Diseases Brain Bank, KCL, receives funding from the MRC and as part of the Brains for Dementia Research project (jointly funded by the Alzheimer's Society and Alzheimer's Research UK).

Cambridge: Cambridge Brain Bank is supported by the NIHR Cambridge Biomedical Research Centre. JBR receives support from Wellcome Trust (220258) and NIHR Cambridge Biomedical Research Centre (BRC-1215-20014). The views expressed are those of the authors and not necessarily those of the NIHR or the Department of Health and Social Care; PSP Association and Evelyn Trust; Medical Research Council (SUAG051 R101400).

Bristol: We would like to thank the Southwest Dementia Brain Bank (SWDBB), their donors and donor's families for providing brain tissue for this study. The SWDBB is part of the Brains for Dementia Research programme, jointly funded by Alzheimer's Research UK and Alzheimer's Society and is supported by BRACE (Bristol Research into Alzheimer's and Care of the Elderly) and the Medical Research Council.

Oxford: We acknowledge the Oxford Brain Bank, supported by the Medical Research Council (MRC), Brains for Dementia Research (BDR) (Alzheimer Society and Alzheimer Research UK), Autistica UK, and the NIHR Oxford Biomedical Research Centre.

Newcastle: Tissue for this study was provided by the Newcastle Brain Tissue Resource which is funded in part by a grant from the UK Medical Research Council (G0400074), by NIHR Newcastle Biomedical Research Centre awarded to the Newcastle upon Tyne NHS Foundation Trust and Newcastle University, and as part of the Brains for Dementia Research Programme jointly funded by Alzheimer's Research UK and Alzheimer's Society.

Valentino, Scotton *et al.*

Manchester: Tissue samples were supplied by The Manchester Brain Bank, which is part of the Brains for Dementia Research programme, jointly funded by Alzheimer's Research UK and Alzheimer's Society.

Barcelona: We are indebted to the HCB-IDIBAPS Biobank, integrated in the Spanish National Biobanks Network, for the biological human samples and data procurement. Gerard Piñol-Ripoll acknowledges the support from the Department of Health (PERIS 2019 SLT008/18/00050). Sergi Borrego-Écija is funded by the Joan Rodés - Josep Baselga grant from the FBBVA.

Amsterdam: Brain tissues were obtained from The Netherlands Brain Bank (NBB), Netherlands Institute for Neuroscience, Amsterdam (open access: www.brainbank.nl). All Material has been collected from donors for or from whom a written informed consent for a brain autopsy and the use of the material and clinical information for research purposes had been obtained by the NBB.

Stockholm: The Brain bank at Karolinska Institutet receives CIMED-funding.

Paris: The NeuroCEB Neuropathology network includes: Dr Franck Letournel (CHU Angers), Dr Marie-Laure Martin-Négrier (CHU Bordeaux), Dr Maxime Faisant (CHU Caen), Pr Catherine Godfraind (CHU Clermont-Ferrand), Pr Claude-Alain Maurage (CHU Lille), Dr Vincent Deramecourt (CHU Lille), Dr David Meyronnet (CHU Lyon), Dr André Maues de Paula (CHU Marseille), Pr Valérie Rigau (CHU Montpellier), Pr Danielle Seilhean (CHU PS, Paris), Dr Susana Boluda (CHU PS, Paris), Dr Isabelle Plu (CHU PS, Paris), Dr Dan Christian Chiforeanu (CHU Rennes), Dr Florent Marguet (CHU Rouen), Dr Béatrice Lannes (CHU Strasbourg).

Victoria: Brain tissues were received from the Victorian Brain Bank, supported by The Florey, The Alfred, Victorian Institute of Forensic Medicine and Coroners Court of Victoria and funded in part by Parkinson's Victoria, MND Victoria, FightMND, Yulgilbar Foundation and Ian and Maria Cootes.

Sydney: JBK is supported by NHMRC Dementia Team 1095127. GMH receives funding from NHMRC program grants 1037746 and 1132524, NHMRC Dementia Team 1095127, and NHMRC Fellowships 1079679 and 1176607. OP receives funding from by NHMRC program grant 1132524 and NHMRC Dementia Team 1095127, and NHMRC Fellowships 1103258 and 2008020. JJK and JRH both receive funding from NHMRC program grants 1037746 and 1132524, and NHMRC Dementia Team 1095127.

Valentino, Scotton *et al.*

Author Contributions

RRV, WJS, RR, DD, JDR, JAH and OAR were involved in conceptualisation and design of study. RRV, WJS, SFR, TL, MGH and MS carried out the formal analysis including pathology review and statistical analysis. RV, WS and OAR wrote the original draft of manuscript. All authors were involved in funding acquisition, resources, validation, critically reviewing and approving final version of manuscript.

Valentino, Scotton *et al.*

References

1. Choudhury P, Scharf EL, Paolini MA, 2nd, Graff-Radford J, Alden EC, Machulda MM, et al. Pick's disease: clinicopathologic characterization of 21 cases. *Journal of neurology*. 2020;267(9):2697-704.
2. Irwin DJ, Brettschneider J, McMillan CT, Cooper F, Olm C, Arnold SE, et al. Deep clinical and neuropathological phenotyping of Pick disease. *Ann Neurol*. 2016;79(2):272-87.
3. Piguet O, Halliday GM, Reid WG, Casey B, Carman R, Huang Y, et al. Clinical phenotypes in autopsy-confirmed Pick disease. *Neurology*. 2011;76(3):253-9.
4. Rohrer JD, Lashley T, Schott JM, Warren JE, Mead S, Isaacs AM, et al. Clinical and neuroanatomical signatures of tissue pathology in frontotemporal lobar degeneration. *Brain*. 2011;134(Pt 9):2565-81.
5. Whitwell JL, Tosakulwong N, Schwarz CC, Senjem ML, Spychalla AJ, Duffy JR, et al. Longitudinal anatomic, functional, and molecular characterization of Pick disease phenotypes. *Neurology*. 2020;95(24):e3190-e202.
6. Yokota O, Tsuchiya K, Arai T, Yagishita S, Matsubara O, Mochizuki A, et al. Clinicopathological characterization of Pick's disease versus frontotemporal lobar degeneration with ubiquitin/TDP-43-positive inclusions. *Acta Neuropathol*. 2009;117(4):429-44.
7. McKhann GM, Albert MS, Grossman M, Miller B, Dickson D, Trojanowski JQ. Clinical and Pathological Diagnosis of Frontotemporal Dementia: Report of the Work Group on Frontotemporal Dementia and Pick's Disease. *Archives of Neurology*. 2001;58(11):1803-9.
8. Dickson DW, Kouri N, Murray ME, Josephs KA. Neuropathology of frontotemporal lobar degeneration-tau (FTLD-tau). *J Mol Neurosci*. 2011;45(3):384-9.
9. Goedert M, Spillantini MG, Jakes R, Rutherford D, Crowther RA. Multiple isoforms of human microtubule-associated protein tau: sequences and localization in neurofibrillary tangles of Alzheimer's disease. *Neuron*. 1989;3(4):519-26.
10. Goedert M, Wischik CM, Crowther RA, Walker JE, Klug A. Cloning and sequencing of the cDNA encoding a core protein of the paired helical filament of Alzheimer disease: identification as the microtubule-associated protein tau. *Proceedings of the National Academy of Sciences of the United States of America*. 1988;85(11):4051-5.
11. Tacik P, DeTure M, Hinkle KM, Lin W-L, Sanchez-Contreras M, Carlomagno Y, et al. A Novel Tau Mutation in Exon 12, p.Q336H, Causes Hereditary Pick Disease. *J Neuropathol Exp Neurol*. 2015;74(11):1042-52.
12. Bronner IF, ter Meulen BC, Azmani A, Severijnen LA, Willemsen R, Kamphorst W, et al. Hereditary Pick's disease with the G272V tau mutation shows predominant three-repeat tau pathology. *Brain*. 2005;128(11):2645-53.
13. Neumann M, Schulz-Schaeffer W, Crowther RA, Smith MJ, Spillantini MG, Goedert M, et al. Pick's disease associated with the novel Tau gene mutation K369I. *Ann Neurol*. 2001;50(4):503-13.
14. Pickering-Brown SM, Baker M, Nonaka T, Ikeda K, Sharma S, Mackenzie J, et al. Frontotemporal dementia with Pick-type histology associated with Q336R mutation in the tau gene. *Brain*. 2004;127:1415-26.
15. Valentino RR, Heckman MG, Johnson PW, Baker MC, Soto-Beasley AI, Walton RL, et al. Association of Mitochondrial DNA Genomic Variation With Risk of Pick Disease. *Neurology*. 2021;96(13):e1755-e60.
16. Baker M, Litvan I, Houlden H, Adamson J, Dickson D, Perez-Tur J, et al. Association of an Extended Haplotype in the Tau Gene with Progressive Supranuclear Palsy. *Human Molecular Genetics*. 1999;8(4):711-5.
17. Houlden H, Baker M, Morris HR, MacDonald N, Pickering-Brown S, Adamson J, et al. Corticobasal degeneration and progressive supranuclear palsy share a common tau haplotype. *Neurology*. 2001;56(12):1702-6.

Valentino, Scotton *et al.*

18. Kouri N, Ross OA, Dombroski B, Younkin CS, Serie DJ, Soto-Ortolaza A, et al. Genome-wide association study of corticobasal degeneration identifies risk variants shared with progressive supranuclear palsy. *Nature Communications*. 2015;6:7247.
19. Morris HR, Baker M, Yasojima K, Houlden H, Khan MN, Wood NW, et al. Analysis of tau haplotypes in Pick's disease. *Neurology*. 2002;59(3):443-5.
20. Russ C, Lovestone S, Baker M, Pickering-Brown SM, Andersen PM, Furlong R, et al. The extended haplotype of the microtubule associated protein tau gene is not associated with Pick's disease. *Neuroscience letters*. 2001;299(1-2):156-8.
21. Murray ME, Kouri N, Lin WL, Jack CR, Jr., Dickson DW, Vemuri P. Clinicopathologic assessment and imaging of tauopathies in neurodegenerative dementias. *Alzheimer's research & therapy*. 2014;6(1):1.
22. Toomey CE, Heywood W, Benson BC, Packham G, Mills K, Lashley T. Investigation of pathology, expression and proteomic profiles in human TREM2 variant postmortem brains with and without Alzheimer's disease. *Brain pathology (Zurich, Switzerland)*. 2020;30(4):794-810.
23. Pittman A, Myers A, Abou-Sleiman P, Fung H, Kaleem M, Marlowe L, et al. Linkage disequilibrium fine mapping and haplotype association analysis of the tau gene in progressive supranuclear palsy and corticobasal degeneration. *Journal of Medical Genetics*. 2005;42(11):837-46.
24. Allen M, Kachadoorian M, Quicksall Z, Zou F, Chai HS, Younkin C, et al. Association of MAPT haplotypes with Alzheimer's disease risk and MAPT brain gene expression levels. *Alzheimer's research & therapy*. 2014;6(4):39-.
25. Heckman MG, Brennan RR, Labbé C, Soto AI, Koga S, DeTure MA, et al. Association of MAPT Subhaplotypes With Risk of Progressive Supranuclear Palsy and Severity of Tau Pathology. *JAMA Neurology*. 2019.
26. Schaid DJ, Rowland CM, Tines DE, Jacobson RM, Poland GA. Score Tests for Association between Traits and Haplotypes when Linkage Phase Is Ambiguous. *American Journal of Human Genetics*. 2002;70(2):425-34.
27. Hutton M, Lendon CL, Rizzu P, Baker M, Froelich S, Houlden H, et al. Association of missense and 5'-splice-site mutations in tau with the inherited dementia FTDP-17. *Nature*. 1998;393(6686):702-5.
28. de Jong S, Chepelev I, Janson E, Strengman E, van den Berg LH, Veldink JH, et al. Common inversion polymorphism at 17q21.31 affects expression of multiple genes in tissue-specific manner. *BMC Genomics*. 2012;13:458.
29. Myers AJ, Pittman AM, Zhao AS, Rohrer K, Kaleem M, Marlowe L, et al. The MAPT H1c risk haplotype is associated with increased expression of tau and especially of 4 repeat containing transcripts. *Neurobiol Dis*. 2007;25(3):561-70.
30. Valenca GT, Srivastava GP, Oliveira-Filho J, White CC, Yu L, Schneider JA, et al. The Role of MAPT Haplotype H2 and Isoform 1N/4R in Parkinsonism of Older Adults. *PLoS One*. 2016;11(7):e0157452.
31. Nalls MA, Blauwendraat C, Vallerga CL, Heilbron K, Bandres-Ciga S, Chang D, et al. Identification of novel risk loci, causal insights, and heritable risk for Parkinson's disease: a meta-analysis of genome-wide association studies. *Lancet Neurol*. 2019;18(12):1091-102.