

# Clinical consequence of vessel perforations during endovascular treatment of acute ischemic stroke

*P. Matthijs van der Sluijs, MD<sup>1</sup>; R. Su, MSc<sup>1</sup>; S.A.P. Cornelissen, MD, PhD<sup>1</sup>; A.C.G.M. van Es, MD, PhD<sup>2</sup>; G. Lycklama a Nijeholt, MD, PhD<sup>3</sup>; B. Roozenbeek, MD, PhD<sup>4</sup>; P.J. van Doormaal, MD<sup>1</sup>; J. Hofmeijer, MD, PhD<sup>5</sup>, A. van der Lugt, MD, PhD<sup>1</sup>; T. van Walsum, MSc, PhD<sup>1</sup>; on behalf of the MR CLEAN Registry investigators\*.*

## Affiliations:

1. Department of Radiology and Nuclear Medicine, Erasmus MC University Medical Center, Rotterdam, The Netherlands
2. Department of Radiology, Leiden University Medical Center, Leiden, The Netherlands
3. Department of Radiology, Haaglanden Medical Center, the Hague, the Netherlands
4. Department of Neurology, Erasmus MC University Medical Center, Rotterdam, The Netherlands
5. Department of Neurology, Rijnstate Hospital, Arnhem, and department of Clinical Neurophysiology, University of Twente, Enschede, the Netherlands

\* Full list of contributors is listed in the supplemental appendix.

## Corresponding author:

P. Matthijs van der Sluijs

Department of Radiology and Nuclear Medicine, Erasmus MC University Medical Center, Rotterdam, The Netherlands, Room Na-2513, 3015 CE, Rotterdam, The Netherlands, p.vandersluijs@erasmusmc.nl, Tel: +3110 70432429

NOTE: This preprint reports new research that has not been certified by peer review and should not be used to guide clinical practice.

Total word count: 5160

Number of tables: 2

Number of figures: 1

Number of supplementary tables: 2

Number of supplementary figures: 1

## Abstract

**Background:** Endovascular treatment (EVT) of acute ischemic stroke can be complicated by vessel perforation. We studied the incidence and determinants of vessel perforations. In addition, we studied the association of vessel perforations with functional outcome, and the association between location of perforation on DSA and functional outcome, using a large EVT registry.

**Methods:** We included all patients in the MR CLEAN Registry who underwent EVT. We used digital subtraction angiography (DSA) to determine whether EVT was complicated by a vessel perforation. We analyzed the association with baseline clinical and interventional parameters using logistic regression models. Functional outcome was measured using the modified Rankin Scale (mRS) at 90 days. The association between vessel perforation and angiographic imaging features and functional outcome was studied using ordinal logistic regression models adjusted for prognostic parameters. These associations were expressed as adjusted common odds ratios (acOR).

**Results:** Vessel perforation occurred in 74 (2.6%) of 2794 patients who underwent EVT. Female sex (aOR 1.9 [95%CI 1.2-3.1]) and distal occlusion locations (aOR 2.2 [95%CI 1.4-3.7]) were associated with increased risk of vessel perforation. Functional outcome was worse in patients with vessel perforation (acOR 0.41, 95%CI 0.25-0.68) compared to patients without a vessel perforation. No significant association was found between location of perforation or successful reperfusion and functional outcome.

**Conclusion:** The incidence of vessel perforation during EVT is low, but it has severe clinical consequences. Females and patients with a distal occlusion locations are at higher risk. The location of vessel perforation or successful reperfusion did not affect functional outcome.

## Nonstandard Abbreviations and Acronyms

A1-A2-A3 – segment of anterior cerebral artery

DSA – Digital Subtraction Angiography

EVT - Endovascular thrombectomy

eTICI – extended Treatment In Cerebral Ischemia score

ICA - internal carotid artery

IVT - intravenous thrombolysis

M1-M2-M3 - M1-M2-M3 segment of middle cerebral artery

mRS - modified Rankin Scale

NIHSS - National Institutes of Health Stroke Scale



## Introduction

Endovascular treatment (EVT) in acute ischemic stroke has been demonstrated to improve functional outcome.<sup>1</sup> Complications such as clot embolization, vessel dissection or vessel perforation are rare, but can have significant negative impact on clinical outcome.<sup>2-4</sup> In particular, vessel perforation has substantial negative clinical impact.<sup>2</sup> A perforation of the vessel during EVT causes extravasation of blood and visible contrast material outside the contours of the normal vessel on DSA. Identifying determinants of vessel perforation might help reducing the occurrence. Secondly, identifying angiographic features of vessel perforation, such as anatomical location or current reperfusion status, that are associated with clinical outcome could influence the decision whether to halt or continue EVT.

In several randomized clinical trials, the incidence of vessel perforations was 0.8-4.9%.<sup>5-9</sup> Two cohort studies describing poor clinical outcomes of vessel perforations, reported an incidence in respectively 16/1599 (1%) and 32/1419 (2.3%) patients.<sup>4,10</sup> The limited amount of cases in these studies hampers robust assessment of determinants of vessel perforation. In our study, we aimed to address this using a large EVT registry.

## Methods

### *Study design and patient selection*

We used data from the MR CLEAN Registry, a prospective observational study of all anterior and posterior circulation acute ischemic stroke patients who underwent EVT in the Netherlands.<sup>11</sup> We used data collected from March 2014 until November 2017. We excluded patients in whom intracranial access was not achieved or in whom a diagnostic DSA was performed solely because of early reperfusion. (Supplemental Figure 1). This study is

reported in accordance with the STROBE guidelines (Strengthening the Reporting of Observational Studies in Epidemiology).<sup>12</sup>

### *Angiographic analysis and definitions*

All imaging in the MR CLEAN Registry was scored by an experienced core laboratory, while being blinded to all clinical data except symptom side. We analyzed the DSAs of vessel perforations reported by interventionists or imaging core laboratory. In addition, we analyzed DSA images of patients who developed intracranial hemorrhage on follow-up CT. In the MR CLEAN Registry, patients received follow-up CT when deteriorated clinically after EVT.

Two experienced neuro-interventionists (observers) analyzed the DSAs separately, and disagreement between observers was resolved by consensus. We annotated the anatomical location, type, and self-limiting contrast extravasation. Anatomical locations were divided into proximal and distal locations. Proximal locations consisted of intracranial carotid artery (ICA), intracranial carotid artery top (ICA-T), M1, A1, and P1 segments. Distal locations consisted of M2, M3, M4, A2 and P2 segments. To distinguish between M1 and M2 segments, we defined the post bifurcation branches of M1 as M2 segments. The contrast extravasation was subdivided into three types: type 1 represents subarachnoid contrast extravasation into the subarachnoid space, type 2 represents contrast extravasation in the adjacent parenchyma of the vessel, and type 3 represents contrast extravasation into the adjacent vein or dural sinus, which leads to an arterio-venous fistula (Figure 1). Successful reperfusion was defined as eTICI 2B-3.<sup>13</sup>

### *Outcome measures*

The primary outcome measure was functional recovery according to the modified Rankin Scale (mRS) determined at 90 days.<sup>14</sup> This ordinal scale ranges from 0 to 6, in which 0

represents 'no symptoms' and 6 represents 'death'. Good functional outcome was defined as mRS 0-2. The secondary outcomes were the National Institutes of Health Stroke Scale (NIHSS) score at 24-hour follow-up, and 90-day mortality.

### *Statistical analysis*

Binary logistic regression was used to assess determinants of vessel perforations. The independent determinants were the baseline demographics. Determinants with  $p < 0.1$  in the univariable regression were included in the adjusted regression models.

Ordinal logistic regression, binary logistic regression and linear regression was used to estimate the association of a vessel perforation with mRS at 90 days, with good (mRS 0-2) functional outcome or mortality, and with NIHSS at 24-hour follow-up, respectively. The NIHSS at 24-hour follow-up was log transformed to meet the assumptions of normally distributed residuals for linear regression. The regression models for clinical outcome were adjusted for prognostic patient and interventional characteristics: age, NIHSS baseline, pre-stroke mRS, diabetes mellitus, previous stroke, systolic blood pressure, glucose, intravenous thrombolytics, ASPECTS, occlusion location dichotomized (proximal, distal), collaterals, time from stroke onset to groin puncture, and dichotomized reperfusion status ( $eTICI \geq 2B$ ).<sup>15</sup> In four cases we could not identify the contrast extravasation on the available DSA runs, but a vessel perforation was clearly mentioned by the operator and was therefore included in the analysis. To reduce potential bias towards poor clinical outcome introduced by the moment of classification of the vessel perforation, we repeated the analysis on the association between perforation and clinical outcome with vessel perforations diagnosed by the operator only.

Within the group of patients with vessel perforation, we assessed if perforation location was associated with mRS at three months and NIHSS at 24-hour follow-up using the

appropriate regressions mentioned above. In addition, within the vessel perforation group we assessed the association of reperfusion status with mRS at three months and NIHSS at 24-hour follow-up using the same regressions methods. We excluded the four cases in which we could not identify the contrast extravasation on DSA for these subgroup analyses.

Missing data concerning prognostic patient and interventional characteristics were imputed with multivariable imputation by chained equations (MICE) package.<sup>16</sup> The level of significance was defined as  $p < 0.05$ . The analyses were performed in R (version 4.2.3; R Foundation for Statistical Computing, Vienna, Austria).<sup>17</sup>

## Results

We included 2794 patients, of which 74 (2.6%) had a vessel perforation. Supplemental Figure 1 provides information on the amount of vessel perforations scored, and reassessment of DSAs of patients with intracranial hemorrhage on follow-up CT.

Clinical characteristics of patients with and without a vessel perforation are shown in Table 1. Vessel perforation occurred in 14 patients (19%) by a microwire, in 25 patients (34%) by the microcatheter, in 18 patients (24%) by the stent-retriever, and in 6 patients (8%) by contact aspiration. In the remaining 11 patients (15%) the cause of vessel perforation was unknown. We observed 39 (57%) distally located vessel perforations and 30 (43%) proximal vessel perforations. In one patients the location of vessel perforation was unknown. We observed 62 (88%) subarachnoid type, 4 (6%) parenchymal type, and 4 (6%) arterio-venous fistula type contrast extravasations. In four patients the vessel perforation type could not be assessed. After a vessel perforation the procedure was immediately terminated in 25 patients. Subsequent DSA runs without any intra-arterial treatment were performed in 29 patients. In 11 patients EVT continued in another vessel. In 5 patients EVT continued in the

same vessel but more proximally. In 4 patients the interventionalist resolved the contrast extravasation by gluing or coiling the particular vessel.

### *Determinants of vessel perforation*

Results of the univariable regression analysis of determinants of vessel perforations can be found in supplementary table 1. The multivariable regression analysis revealed that female sex and distal occlusion locations were associated with a higher odds of a vessel perforation (resp. aOR 1.9 [95%CI 1.2-3.1], aOR 2.2 [95%CI 1.4-3.7]). No statistically significant associations were observed with respect to administration of intravenous thrombolytics (IVT), the time from stroke onset to the start of the procedure, use of general anesthesia or the total amount of EVT attempts. The majority of patients in both groups were treated with a stent retriever first, and no significant difference was found concerning the proportion of using stent retriever or aspiration technique between both groups.

### *Association between vessel perforation and outcome*

Vessel perforation was associated with worse functional outcome, cOR 0.30(95%CI 0.19-0.48), also after adjustment for patient parameters and TICI score, acOR 0.41 (95%CI 0.25-0.68). Vessel perforation was negatively associated with good functional outcome (aOR 0.40, 95%CI 0.19-0.86) and mortality (aOR 3.2, 95%CI 1.8-5.6). Vessel perforation was associated with higher in-hospital NIHSS at 24-hour follow-up,  $\beta$  0.34 (95%CI 0.16-0.51).

The association between vessel perforation and mRS at 90 days did not change after exclusion of patients in whom vessel perforations were recognized at follow-up CT only (Supplemental table 1).

### *Angiographic features of vessel perforation and clinical outcome*

Distal perforations were only associated with a shift towards better functional outcome in the unadjusted model, but not in the adjusted model (Table 2). No difference was observed concerning risk of poor outcome at 90 days, mortality and NIHSS at 24H follow-up in patients with distal compared to proximal perforation location.

Reperfusion was successful in 18/74 (24%) of patients with vessel perforation. No association was found between successful reperfusion and functional outcome or mortality (Table 2). Successful reperfusion was associated with lower NIHSS at 24H follow up in the unadjusted model only (Table 2).

## Discussion

This study investigated vessel perforations during EVT in ischemic stroke patients. We report an incidence rate of 2.6%, in which women and distal occlusion locations were associated with a vessel perforation. Vessel perforation has severe clinical consequences, as we found a two-fold higher risk of poor functional outcome and mortality rate compared to non-perforated cases. Visually, the majority of contrast blushes were of a subarachnoid type. There were slightly more distal vessel perforations than proximal, but clinical outcome was similar in both groups. Successful reperfusion was achieved in a minority of patients with vessel perforation, and did not show an association with functional outcome.

The incidence rate we found is comparable with previous registry studies in which 0.7-2.6% of patients had a vessel perforation.<sup>2,4,10,18-20</sup> Some studies define vessel perforation as subarachnoid hemorrhage on follow-up CT, with incidence ranging from to 2.9% to 20%.<sup>3,19,21</sup>

Distal occlusion locations and female sex increase the risk of vessel perforation. Smaller vessels have smaller lumens and thinner vessel walls, which could explain the

increased risk of vascular damage during EVT.<sup>22</sup> The association with sex could be explained by the smaller vessel size in women compared to men. Studies measuring intracranial vessel wall thickness and lumen diameter in the circle of Willis on MRA showed thinner vessel walls and lower vessel diameters in females than in men.<sup>23-25</sup> No literature was found on distal vessel dimensions in relation to sex, however, if proximal vessels are smaller in females, this will probably also be true for distal vessels.

The occurrence of contrast extravasation was most often due to manipulation of microcatheter, followed by stent-retriever and microwire manipulation. Keulers et al. showed reduced vessel perforations when passing the clot using a microcatheter with the microwire retracted 10 mm from the tip, instead of a microwire alone.<sup>19</sup> In our study we could not study this specific method of clot passing. However, we did find that microcatheter manipulation towards the clot also resulted in a perforation. In a small case study, Matsumoto et al. described an anchor wire technique using a basket-shaped microwire which adheres to the vessel to stabilize the exchange of EVT devices near the target vessel to reduce manipulation induced vessel perforations.<sup>26</sup>

The clinical outcome of vessel perforations is poor. Potentially, the discontinuation of EVT before reperfusion is a major factor leading to worse clinical outcome. In a case report of two patients, interventionists were able to glue a distal M2 vessel perforation and continue with the thrombectomy of a proximal M1 occlusion achieving successful reperfusion. Functional outcome was stated to be good (mRS at 90d  $\leq 2$ ) in both cases.<sup>27</sup> In a recent case series comparing successful and unsuccessful reperfusion in vessel perforation patients, the authors show favorable clinical outcome in patients with successful reperfusion.<sup>10</sup> This raises the question if the discontinuation of EVT could be the main contributor to worse clinical outcome, instead of the vessel perforation itself. We did not

find an association between successful reperfusion and clinical outcome in vessel perforation patients. This finding differs from the study of Ducroux et al and could be explained by the large proportion of ICA occlusions in our study (31% vs 21%) in addition to the larger proportion of unsuccessful reperfusion in these occlusions (37.5% vs 16.7%).<sup>10</sup> We did find a favorable association of successful reperfusion with NIHSS at 24H follow-up, but failed to show significant association after adjustment for prognostic patient parameters.

The number of EVT performed for distal occlusions is increasing, from approximately 8% in the EVT trials in 2015 to 15-54% in the latest RCTs on EVT.<sup>5-9,28-34</sup> Ongoing trials, such as the DISTAL and ESCAPE-MeVO trials, specifically try to estimate the benefit of EVT in these patients (resp. NCT05029414 and NCT05151172). M2 occlusions are considered good EVT targets according to stroke physicians.<sup>35</sup> In our study, distal occlusions were at higher risk of a vessel perforation, but the clinical outcome of distal perforations was similar to proximal perforations. Potential treatment benefit could be lower in distal occlusion locations due to increased rate vessel perforations. However, a vessel perforation remains a rare complication, and therefore the treatment benefit in distal occlusion patients potentially outweigh the increased risk of a vessel perforation.

## Limitations

A limitation of our study followed the design of the MR CLEAN Registry where follow-up imaging was only performed when a patient clinically deteriorated. Therefore, potential vessel perforations in patients without a decline in neurological performance and missed by operator and core laboratory on DSA could not be assessed. By not recognizing the minimally symptomatic or asymptomatic vessel perforations, the odds for worse outcome could be exaggerated. However, due to the limited amount of cases found in patients with hemorrhage on CT, we believe the amount of missed cases to be small.



The limited amount of patients prevents us from definitively state that there is no difference in clinical outcome between proximal and distal vessel perforations or reperfusion status, although this is the largest cohort of vessel perforations in current literature.

## **Conclusion**

The incidence of vessel perforation during EVT is low, but it has severe clinical consequences. Females and patients treated at distal occlusion locations are at higher risk.

The location of vessel perforation EVT and successful reperfusion did not significantly affect functional outcome in our cohort.

## Acknowledgements

We thank the MR CLEAN Registry investigators for their contribution. A list of all investigators is given in the supplement material.

## Source of funding

The MR CLEAN Registry was partly funded by TWIN Foundation, Erasmus MC University Medical Center, Maastricht University Medical Center, and Amsterdam UMC. The current work on clinical consequence of vessel perforations was supported by Health-Holland (TKI Life Sciences and Health) through the Q-Maestro project under Grant EMCLSH19006 and Philips Healthcare (Best, The Netherlands).

## Disclosures

Erasmus MC received funds from Stryker® by DD, AvdL, and Bracco Imaging® by DD.

Amsterdam UMC received funds from Stryker® for consultations by CM, YR and OB.

MUMC received funds from Stryker® and Codman® for consultations by WZ.

## Personal disclosures

P. Matthijs van der Sluijs – no conflict of interest.

R. Su – no conflict of interest.

S.A.P. Cornelissen – no conflict of interest.

A.C.G.M. van Es – no conflict of interest.

G. Lycklama a Nijeholt – no conflict of interest

B. Roozenbeek – no conflict of interest.

P.J. van Doormaal – no conflict of interest.

J. Hofmeijer – no conflict of interest.

A. van der Lugt – no conflict of interest.

T. van Walsum – no conflict of interest

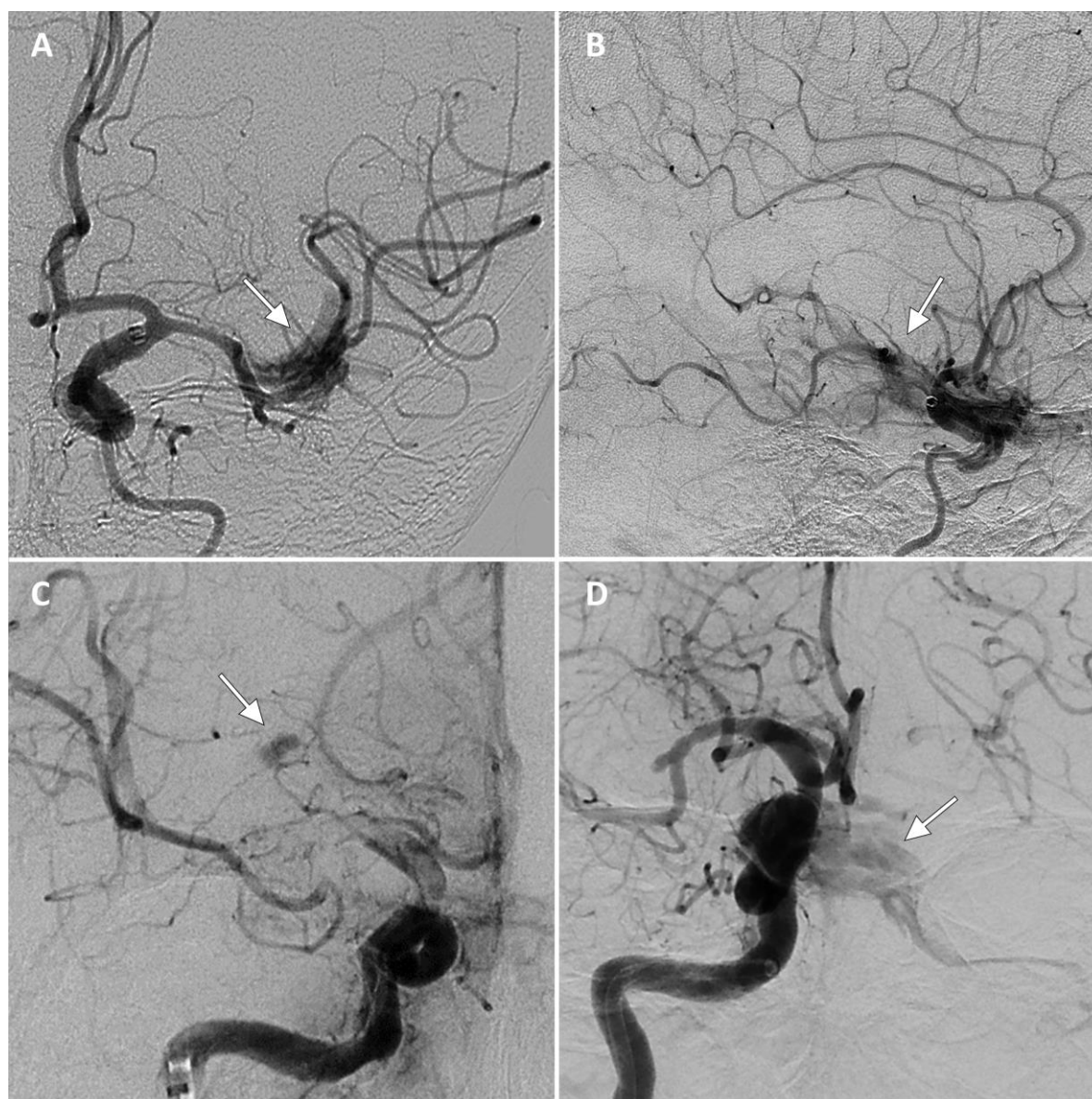
## References

1. Goyal M, Menon BK, van Zwam WH, Dippel DW, Mitchell PJ, Demchuk AM, Davalos A, Majoie CB, van der Lugt A, de Miquel MA, et al. Endovascular thrombectomy after large-vessel ischaemic stroke: a meta-analysis of individual patient data from five randomised trials. *Lancet*. 2016;387:1723-1731. doi: 10.1016/S0140-6736(16)00163-X
2. Happi Ngankou E, Gory B, Marnat G, Richard S, Bourcier R, Sibon I, Dargazanli C, Arquizan C, Maier B, Blanc R, et al. Thrombectomy Complications in Large Vessel Occlusions: Incidence, Predictors, and Clinical Impact in the ETIS Registry. *Stroke*. 2021;52:e764-e768. doi: 10.1161/STROKEAHA.121.034865
3. Salsano G, Pracucci G, Mavilio N, Saia V, Bandettini di Poggio M, Malfatto L, Sallustio F, Wlderk A, Limbucci N, Nencini P, et al. Complications of mechanical thrombectomy for acute ischemic stroke: Incidence, risk factors, and clinical relevance in the Italian Registry of Endovascular Treatment in acute stroke. *Int J Stroke*. 2021;16:818-827. doi: 10.1177/1747493020976681
4. Mokin M, Fargen KM, Primiani CT, Ren Z, Dumont TM, Brasiliense LBC, Dabus G, Linfante I, Kan P, Srinivasan VM, et al. Vessel perforation during stent retriever thrombectomy for acute ischemic stroke: technical details and clinical outcomes. *J Neurointerv Surg*. 2017;9:922-928. doi: 10.1136/neurintsurg-2016-012707
5. Berkhemer OA, Fransen PS, Beumer D, van den Berg LA, Lingsma HF, Yoo AJ, Schonewille WJ, Vos JA, Nederkoorn PJ, Wermer MJ, et al. A randomized trial of intraarterial treatment for acute ischemic stroke. *N Engl J Med*. 2015;372:11-20. doi: 10.1056/NEJMoa1411587
6. Saver JL, Goyal M, Bonafe A, Diener HC, Levy EI, Pereira VM, Albers GW, Cognard C, Cohen DJ, Hacke W, et al. Stent-retriever thrombectomy after intravenous t-PA vs. t-PA alone in stroke. *N Engl J Med*. 2015;372:2285-2295. doi: 10.1056/NEJMoa1415061
7. Campbell BC, Mitchell PJ, Kleinig TJ, Dewey HM, Churilov L, Yassi N, Yan B, Dowling RJ, Parsons MW, Oxley TJ, et al. Endovascular therapy for ischemic stroke with perfusion-imaging selection. *N Engl J Med*. 2015;372:1009-1018. doi: 10.1056/NEJMoa1414792
8. Jovin TG, Chamorro A, Cobo E, de Miquel MA, Molina CA, Rovira A, San Roman L, Serena J, Abilleira S, Ribo M, et al. Thrombectomy within 8 hours after symptom onset in ischemic stroke. *N Engl J Med*. 2015;372:2296-2306. doi: 10.1056/NEJMoa1503780
9. Goyal M, Demchuk AM, Menon BK, Eesa M, Rempel JL, Thornton J, Roy D, Jovin TG, Willinsky RA, Sapkota BL, et al. Randomized assessment of rapid endovascular treatment of ischemic stroke. *N Engl J Med*. 2015;372:1019-1030. doi: 10.1056/NEJMoa1414905
10. Ducroux C, Boisseau W, Poppe AY, Daneault N, Deschaintre Y, Diestro JDB, Eneling J, Gioia LC, Iancu D, Maier B, et al. Successful Reperfusion is Associated with Favorable Functional Outcome despite Vessel Perforation during Thrombectomy: A Case Series and Systematic Review. *AJNR Am J Neuroradiol*. 2022;43:1633-1638. doi: 10.3174/ajnr.A7650
11. Jansen IGH, Mulder M, Goldhoorn RB, investigators MCR. Endovascular treatment for acute ischaemic stroke in routine clinical practice: prospective, observational cohort study (MR CLEAN Registry). *BMJ*. 2018;360:k949. doi: 10.1136/bmj.k949
12. von Elm E, Altman DG, Egger M, Pocock SJ, Gotsche PC, Vandenbroucke JP, Initiative S. The Strengthening the Reporting of Observational Studies in Epidemiology (STROBE) statement: guidelines for reporting observational studies. *Lancet*. 2007;370:1453-1457. doi: 10.1016/S0140-6736(07)61602-X
13. Goyal M, Fargen KM, Turk AS, Mocco J, Liebeskind DS, Frei D, Demchuk AM. 2C or not 2C: defining an improved revascularization grading scale and the need for standardization of angiography outcomes in stroke trials. *J Neurointerv Surg*. 2014;6:83-86. doi: 10.1136/neurintsurg-2013-010665
14. Bamford JM, Sandercock PA, Warlow CP, Slattery J. Interobserver agreement for the assessment of handicap in stroke patients. *Stroke*. 1989;20:828. doi: 10.1161/01.str.20.6.828

15. Venema E, Roozenbeek B, Mulder M, Brown S, Majoie C, Steyerberg EW, Demchuk AM, Muir KW, Davalos A, Mitchell PJ, et al. Prediction of Outcome and Endovascular Treatment Benefit: Validation and Update of the MR PREDICTS Decision Tool. *Stroke*. 2021;52:2764-2772. doi: 10.1161/STROKEAHA.120.032935
16. van Buuren S, Groothuis-Oudshoorn K. mice: Multivariate Imputation by Chained Equations in R. *Journal of Statistical Software*. 2011;45:1 - 67. doi: 10.18637/jss.v045.i03
17. Team RC. *R: A Language and Environment for Statistical Computing*; Vienna, Austria: R Foundation for Statistical Computing; 2021.
18. Minnerup J, Wersching H, Teuber A, Wellmann J, Eyding J, Weber R, Reimann G, Weber W, Krause LU, Kurth T, et al. Outcome After Thrombectomy and Intravenous Thrombolysis in Patients With Acute Ischemic Stroke: A Prospective Observational Study. *Stroke*. 2016;47:1584-1592. doi: 10.1161/STROKEAHA.116.012619
19. Keulers A, Nikoubashman O, Mpotsaris A, Wilson SD, Wiesmann M. Preventing vessel perforations in endovascular thrombectomy: feasibility and safety of passing the clot with a microcatheter without microwire: the wireless microcatheter technique. *J Neurointerv Surg*. 2019;11:653-658. doi: 10.1136/neurintsurg-2018-014267
20. Morkos K, Maingard J, Barras C, Kok HK, Hall J, Russell J, Thijs V, Slater LA, Chong W, Chandra R, et al. Tranexamic acid as a novel adjunct in the management of vessel perforation complicating Endovascular Clot Retrieval. *J Stroke Cerebrovasc Dis*. 2023;32:107067. doi: 10.1016/j.jstrokecerebrovasdis.2023.107067
21. Maslias E, Puccinelli F, Nannoni S, Hajdu SD, Bartolini B, Ricciardi F, Dunet V, Maeder P, Strambo D, Saliou G, et al. Predictors of Endovascular Treatment Procedural Complications in Acute Ischemic Stroke: A Single-Center Cohort Study. *AJNR Am J Neuroradiol*. 2022;43:1743-1748. doi: 10.3174/ajnr.A7705
22. Hartevelde AA, Denswil NP, Van Hecke W, Kuijff HJ, Vink A, Spliet WGM, Daemen MJ, Luijten PR, Zwanenburg JJM, Hendrikse J, et al. Data on vessel wall thickness measurements of intracranial arteries derived from human circle of Willis specimens. *Data Brief*. 2018;19:6-12. doi: 10.1016/j.dib.2018.04.116
23. Shatri J, Bexheti D, Bexheti S, Kabashi S, Krasniqi S, Ahmetgjekaj I, Zhjeqi V. Influence of Gender and Age on Average Dimensions of Arteries Forming the Circle of Willis Study by Magnetic Resonance Angiography on Kosovo's Population. *Open Access Maced J Med Sci*. 2017;5:714-719. doi: 10.3889/oamjms.2017.160
24. Cogswell PM, Lants SK, Davis LT, Donahue MJ. Vessel wall and lumen characteristics with age in healthy participants using 3T intracranial vessel wall magnetic resonance imaging. *J Magn Reson Imaging*. 2019;50:1452-1460. doi: 10.1002/jmri.26750
25. Zurada A, Gielecki J, Tubbs RS, Loukas M, Maksymowicz W, Cohen-Gadol AA, Michalak M, Chlebiej M, Zurada-Zielinska A. Three-dimensional morphometrical analysis of the M1 segment of the middle cerebral artery: potential clinical and neurosurgical implications. *Clin Anat*. 2011;24:34-46. doi: 10.1002/ca.21051
26. Matsumoto S, Imamura H, Takayanagi A, Fukumitsu R, Goto M, Sunohara T, Fukui N, Omura Y, Akiyama T, Fukuda T, et al. First-in-human trial of Center Wire for neuroendovascular therapy to avoid guidewire-related complications. *Interv Neuroradiol*. 2023;15910199231176709. doi: 10.1177/15910199231176709
27. Xu H, Guan S, Liu C, Wang L, Yan B, Han H, Quan T. Rescue Glue Embolization of Vessel Perforation During Mechanical Thrombectomy for Acute Ischemic Stroke: Technical Note. *World Neurosurg*. 2019;121:19-23. doi: 10.1016/j.wneu.2018.09.131
28. Suzuki K, Matsumaru Y, Takeuchi M, Morimoto M, Kanazawa R, Takayama Y, Kamiya Y, Shigeta K, Okubo S, Hayakawa M, et al. Effect of Mechanical Thrombectomy Without vs With Intravenous Thrombolysis on Functional Outcome Among Patients With Acute Ischemic Stroke: The SKIP Randomized Clinical Trial. *JAMA*. 2021;325:244-253. doi: 10.1001/jama.2020.23522

29. LeCouffe NE, Kappelhof M, Treurniet KM, Rinkel LA, Bruggeman AE, Berkhemer OA, Wolff L, van Voorst H, Tolhuisen ML, Dippel DWJ, et al. A Randomized Trial of Intravenous Alteplase before Endovascular Treatment for Stroke. *N Engl J Med*. 2021;385:1833-1844. doi: 10.1056/NEJMoa2107727
30. van der Steen W, van de Graaf RA, Chalos V, Lingsma HF, van Doormaal PJ, Coutinho JM, Emmer BJ, de Ridder I, van Zwam W, van der Worp HB, et al. Safety and efficacy of aspirin, unfractionated heparin, both, or neither during endovascular stroke treatment (MR CLEAN-MED): an open-label, multicentre, randomised controlled trial. *Lancet*. 2022. doi: 10.1016/S0140-6736(22)00014-9
31. Lapergue B, Blanc R, Costalat V, Desal H, Saleme S, Spelle L, Marnat G, Shotar E, Eugene F, Mazighi M, et al. Effect of Thrombectomy With Combined Contact Aspiration and Stent Retriever vs Stent Retriever Alone on Revascularization in Patients With Acute Ischemic Stroke and Large Vessel Occlusion: The ASTER2 Randomized Clinical Trial. *JAMA*. 2021;326:1158-1169. doi: 10.1001/jama.2021.13827
32. Renu A, Millan M, San Roman L, Blasco J, Marti-Fabregas J, Terceno M, Amaro S, Serena J, Urra X, Laredo C, et al. Effect of Intra-arterial Alteplase vs Placebo Following Successful Thrombectomy on Functional Outcomes in Patients With Large Vessel Occlusion Acute Ischemic Stroke: The CHOICE Randomized Clinical Trial. *JAMA*. 2022;327:826-835. doi: 10.1001/jama.2022.1645
33. Menon BK, Buck BH, Singh N, Deschaintre Y, Almekhlafi MA, Coutts SB, Thirunavukkarasu S, Khosravani H, Appireddy R, Moreau F, et al. Intravenous tenecteplase compared with alteplase for acute ischaemic stroke in Canada (AcT): a pragmatic, multicentre, open-label, registry-linked, randomised, controlled, non-inferiority trial. *Lancet*. 2022;400:161-169. doi: 10.1016/S0140-6736(22)01054-6
34. Olthuis SGH, Pirson FAV, Pinckaers FME, Hinsenveld WH, Nieboer D, Ceulemans A, Knapen R, Robbe MMQ, Berkhemer OA, van Walderveen MAA, et al. Endovascular treatment versus no endovascular treatment after 6-24 h in patients with ischaemic stroke and collateral flow on CT angiography (MR CLEAN-LATE) in the Netherlands: a multicentre, open-label, blinded-endpoint, randomised, controlled, phase 3 trial. *Lancet*. 2023. doi: 10.1016/S0140-6736(23)00575-5
35. Almekhlafi M, Ospel JM, Saposnik G, Kashani N, Demchuk A, Hill MD, Goyal M, Menon BK. Endovascular Treatment Decisions in Patients with M2 Segment MCA Occlusions. *AJNR Am J Neuroradiol*. 2020;41:280-285. doi: 10.3174/ajnr.A6397





*Figure 1 Vessel perforation types based on contrast extravasation on digital subtraction angiography. Arrows indicate contrast extravasation. A. Anteroposterior view of subarachnoid type contrast extravasation in the M2 segment B. Lateral view of subarachnoid type contrast extravasation in the M2 segment C. Anteroposterior view of parenchymal type contrast extravasation surrounding lenticulostriate arteries of the M1. D. Lateral view of AV-fistula type contrast extravasation due to occurrence of carotid cavernous fistula.*

*AV fistula, arteriovenous fistula; ICA, internal carotid artery; M(segment), middle cerebral artery;*

Table 1 Baseline, interventional and outcome parameters in patients with and without a vessel perforation.

	No vessel perforation	Vessel perforation
n	2720	74
<i>Baseline characteristics</i>		
Male sex, n (%)	1429 (53)	27 (37)
Age in years, median [IQR]	71 [60-80]	72 [63-84]
Smoking, n (%)	602 (29)	21 (34)
Medical history, n (%)		
Diabetes mellitus	426 (16)	14 (19)
Atrial fibrillation	626 (23)	24 (32)
Hypertension	1399 (52)	39 (54)
Stroke	455 (17)	15 (21)
Hypercholesterolemia	813 (31)	21 (30)
Peripheral artery disease	242 (9)	5 (7)
Medication use, n (%)		
Antiplatelets	839 (31)	20 (27)
Coumarins	346 (13)	11 (15)
Statins	958 (36)	22 (30)
Pre stroke mRS, median [IQR]	0 [0-1]	0 [0-1]
NIHSS baseline, median [IQR]	16 [11-20]	17 [12-20]
ASPECTS baseline, median [IQR]	9 [7-10]	9 [7-10]
Collateral score CTA (%)		
absent collaterals	155 (6)	7 (10)
filling <50% of occluded area	929 (36)	26 (37)
>50% but less <100%	994 (39)	19 (27)

100% of occluded area	487 (19)	19 (27)
Occlusion loc. DSA, n (%)		
Extracranial ICA	39 (1.5)	0 (0)
Intracranial ICA	501 (19)	15 (21)
M1	1468 (56)	27 (38)
M2	534 (20)	25 (35)
A1	6 (0.2)	0 (0)
A2	2 (0.1)	0 (0)
Other: M3/M4/posterior	58 (2)	4 (6)
<i>Interventional characteristics</i>		
IV alteplase, n (%)	2000 (74)	52 (70)
Time stroke onset to groin puncture in minutes, median [IQR]	195 [150-255]	219 [165-272]
Procedure duration in minutes, median [IQR]	60 [40-85]	73 [57-85]
General anesthesia, n (%)	700 (27)	15 (22)
Guiding catheter 8F, n (%)	1679 (76)	33 (67)
Balloon guide, n (%)	1349 (65)	29 (63)
First attempt Stent retriever, n (%)	1804 (70)	37 (65)
First attempt Contact Aspiration, n (%)	684 (26)	17 (30)
Total EVT attempts, median [IQR]	2 [1-3]	2 [1-3]
<i>Clinical outcome</i>		
mRS 0-2 at 90 days, n (%)	1054 (41)	10 (15)
Death, n (%)	699 (28)	40 (54)
NIHSS at 24 hours, median [IQR]	10 [4-17]	17 [12-23]



<i>Angiographic outcome</i>		
eTICI <sup>a</sup> , n (%)		
0	269 (10)	31 (42)
1	84 (3)	7 (10)
2A	553 (21)	18 (24)
2B	556 (21)	6 (8)
2C	325 (12)	6 (8)
3	863 (33)	6 (8)

A(segment), anterior cerebral artery; ASPECTS, Alberta Stroke Program Early CT Score; CTA, computed tomography angiography; DSA, digital subtraction angiography; eTICI, extended thrombolysis In Cerebral Infarction; EVT, endovascular treatment; ICA, internal carotid artery; IQR, interquartile range; IV, intravenous; M(segment), middle cerebral artery; mRS, modified Rankin Scale; NIHSS (FU), National Institutes of Health Stroke Scale (at 24H follow-up).

<sup>a</sup>eTICI is scored by an experienced core laboratory, a maximum of eTICI 2A could be assigned to cases where one AP or Lateral view was available on the post EVT DSA.

Table 2 Association of location of vessel perforation and successful reperfusion with functional outcome, mortality and NIHSS at 24H.

	mRS90d ordinal		mRS90d 0-2		Death		NIHSS 24H†	
	cOR (95%CI)	acOR* (95%CI)	OR (95%CI)	aOR* (95%CI)	OR (95%CI)	aOR* (95%CI)	Beta (95%CI)	Beta* (95%CI)
Distal vs Proximal	3.3 (1.2-9.5)	2.7 (0.7-10.8)	3.9 (0.8-18.9)	-	0.4 (0.1-1.0)	-	-0.3 (-0.6-0.02)	-
eTICI ≥2B	2.2 (0.7-6.2)	-	2.8 (0.7-11.6)	-	0.5 (0.2-1.7)	-	-0.5 (-0.8- -0.1)	-0.3 (-0.6-0.01)

Adjusted regression analyses are not performed when unadjusted regression was not significant.

acOR, adjusted common odds ratio; cOR, common odds ratio; mRS90d, modified Rankin Scale at 90d; NIHSS FU24H, National Institutes of Health Stroke Scale at 24h follow-up

\* model adjusted for: age, pre-stroke mRS dichotomized (0-2), history of stroke, history of Diabetes Mellitus, glucose blood level (mmol/L), systolic blood pressure (mmHg), NIHSS at baseline, collateral grading score dichotomized (≥50%), ASPECTS at baseline, IV- thrombolytics, time stroke onset to groin puncture, occlusion segment proximal/distal on DSA, reperfusion dichotomized (eTICI ≥2B)

† NIHSS at 24H was log transformed to meet the assumptions of normally distributed residuals for linear regression.

