

# Chronic Overlapping Pain Conditions and Nociceptive Pain

Keira J.A. Johnston<sup>1</sup>, Rebecca Signer<sup>2</sup>, Laura M. Huckins<sup>1</sup>

1. Department of Psychiatry, Yale School of Medicine, Yale University, New Haven, CT, USA

2. Department of Genetic and Genomic Sciences, Icahn School of Medicine at Mount Sinai, New York City, NY, USA

## Abstract

**Background:** Chronic Overlapping Pain Conditions (COPCs) are a subset of chronic pain conditions commonly comorbid with one another and more prevalent in women and assigned female at birth (AFAB) individuals. Pain experience in these conditions may better fit with a new mechanistic pain descriptor, nociceptive pain, and nociceptive type pain may represent a shared underlying factor among COPCs. **Methods:** We applied GenomicSEM common-factor genome wide association study (GWAS) and multivariate transcriptome-wide association (TWAS) analyses to existing GWAS output for six COPCs in order to find genetic variation associated with nociceptive type pain, followed by genetic correlation (linkage-disequilibrium score regression), gene-set and tissue enrichment analyses. **Results:** We found 24 independent single nucleotide polymorphisms (SNPs), and 127 unique genes significantly associated with nociceptive type pain, and showed nociceptive type pain to be a polygenic trait with significant SNP-heritability. We found significant genetic overlap between multisite chronic pain and nociceptive type pain, and to a smaller extent with rheumatoid arthritis. Tissue enrichment analyses highlighted cardiac and thyroid tissue, and gene set enrichment analyses emphasized potential shared mechanisms in cognitive, personality, and metabolic traits and nociceptive type pain along with distinct pathology in migraine and headache. **Conclusions:** We use a well-powered network approach to investigating nociceptive type pain using existing COPC GWAS output, and show nociceptive type pain to be a complex, heritable trait, in addition to contributing to understanding of potential mechanisms in development of nociceptive pain.

## Introduction

Chronic pain can be defined as pain that persists 3+ months (1) and is a main symptom of many conditions as well as being associated with injury and surgery. Chronic pain can also be studied as a complex disease trait in line with recent international association for the study of pain (IASP) redefinitions of pain and definition of 'chronic primary pain' codes for the ICD-11 (2–4), and several recent large genome-wide association studies (GWAS) have uncovered genetic variation associated with such chronic pain traits (5–7). More than 1 in 5 US adults experience chronic pain (8), and chronic pain is associated with high socioeconomic and quality of life burden (1,9), and despite genetic studies into chronic pain as a disease trait, and on conditions where chronic pain is a prominent symptom, mechanisms of development of chronic pain are not fully understood.

Neuropathic and nociceptive pain (10) are used to categorize pain and chronic pain according to suspected or confirmed underlying mechanism(s). Neuropathic pain is defined as caused by lesions or disease in the somatosensory nervous system, and nociceptive pain, designed to directly contrast neuropathic pain, is defined as pain arising from actual or threatened damage to non-neural tissue (in the context of a normally functioning somatosensory nervous system). However, pain experienced in the context of many different chronic pain conditions may not fit with these two descriptors – Chronic Overlapping Pain Conditions (COPCs) (11–13) may represent a subset of chronic pain conditions where pain experiences very often diverge from nociceptive/ neuropathic or a mixed nociceptive/ neuropathic pain state. COPCs are a subset of chronic pain conditions commonly comorbid with one another and more prevalent in people assigned female at birth (AFAB). The United States congress and the National Institutes of Health (NIH) listed ten conditions as COPCs; myalgic encephalitis/ chronic fatigue syndrome (ME/CFS), vulvodynia, temporomandibular disorders, irritable bowel syndrome (IBS), interstitial cystitis/ painful bladder syndrome, fibromyalgia, endometriosis, chronic tension-type headache, chronic migraine headache, and chronic low-back pain. In these conditions, there may not be actual or threatened tissue damage or lesion/ disease at the somatosensory nervous system (e.g., fibromyalgia), or

if features of nociceptive/ neuropathic pain are present they do not fully capture the pain experience (e.g., chronic low back pain). A proposed third mechanistic pain descriptor, ‘nociplastic pain’, added to IASP terminology (10) in 2017 may better capture features of pain in COPCs (11).

Nociplastic pain is defined as pain arising from altered nociception in the absence of clear lesion/ disease of the somatosensory nervous system and/or absence of actual or threatened tissue damage causing activation of peripheral nociceptors. Pain in COPCs, where nociplastic pain could be the underlying mechanism (or main underlying mechanism if a mixed pain state is suspected), may fit better with this description as many COPCs are not associated with neural/ non-neural tissue damage (e.g., fibromyalgia), or if disease and tissue damage is present pain is often non-proportional to tissue damage and can be diffuse throughout the body beyond diseased tissue sites (e.g., endometriosis, chronic low back pain). Nociplastic pain is also associated, compared to nociceptive or neuropathic pain, with greater risk of CNS-related symptoms such as fatigue, changes in cognition and memory, depression, anxiety, and sleep issues as also commonly seen in COPCs (12).

These features of COPCs, combined with the fact they are commonly comorbid with one another, may suggest that nociplastic type pain is an underlying shared factor across COPCs. Even in COPCs where a mixed pain state with nociceptive pain (i.e., where tissue damage may be present) such as endometriosis, studies have shown that nociplastic pain contributes significantly to pain experience, and is associated with severity of pain independent of surgical procedures, amount of endometriosis, BMI, and age (14). Previous studies also suggest COPCs could be viewed as a single “lifelong” disease that “manifests in different bodily regions over time” (15). There are epidemiological studies of pelvic pain conditions (e.g., MAPP (16,17)), but there are no GWAS of vulvodynia, chronic pelvic pain, or bladder pain syndrome/ IC. In addition, there are to date no sufficiently large studies with both genotyping and questionnaire data designed specifically to ascertain nociplastic pain (such as the Central Sensitization Inventory (18) or Nociplastic-Based Fibromyalgia Features tool (19)).

However, large-scale GWAS for several other COPCs are available, and can be studied as a network to uncover genetic variation associated with nociplastic-type pain as an underlying factor in all COPCs.

Chronic pain conditions can be highly stigmatized (20–24) – this is likely even more common in COPCs due to a lack of or disproportionate-to-pain-level presence of tissue or nerve damage (25–27), and higher prevalence of COPCs in women and AFAB people (20,28). Understanding mechanisms of chronic pain that are not due to, or cannot be fully explained by, nervous system damage or dysfunction or tissue damage (i.e., nociplastic pain) will contribute to legitimizing the pain experience in COPCs. In addition, finding genetic variation associated with nociplastic pain could inform new treatment approaches in COPCs, conditions where many existing pharmaceutical and surgical treatments can be less effective (29) or even actively worsen pain (30) compared to use in nociceptive/ neuropathic pain.

## Methods

### GWAS summary statistics

GWAS summary statistics for 6 chronic overlapping pain condition (COPC) traits were obtained through publicly available downloads, requests made directly to study authors, or through data request to FinnGenn (release R9, May 2023). Traits, sample sizes, and sources are summarized in Table X. We opted not to include migraine or ME/CFS summary statistics. With ME/CFS (31) this is due to sample size being too small for successful completion of the multivariable LDSC step of GenomicSEM common-factor GWAS analysis ( $N_{\text{case}} = 427$ ,  $N_{\text{control}} = 972$ ). For migraine, a significant proportion of the ‘broad headache’ GWAS case participants are likely migraineurs and/or have both tension-type headache and migraine, therefore including the broad headache GWAS but not migraine GWAS allows for capturing a fuller spectrum of headache and migraine-associated genetic variation, without over-representation of migraine.

Trait	Acronym	Source	Cases	Controls	Sample	Population
-------	---------	--------	-------	----------	--------	------------

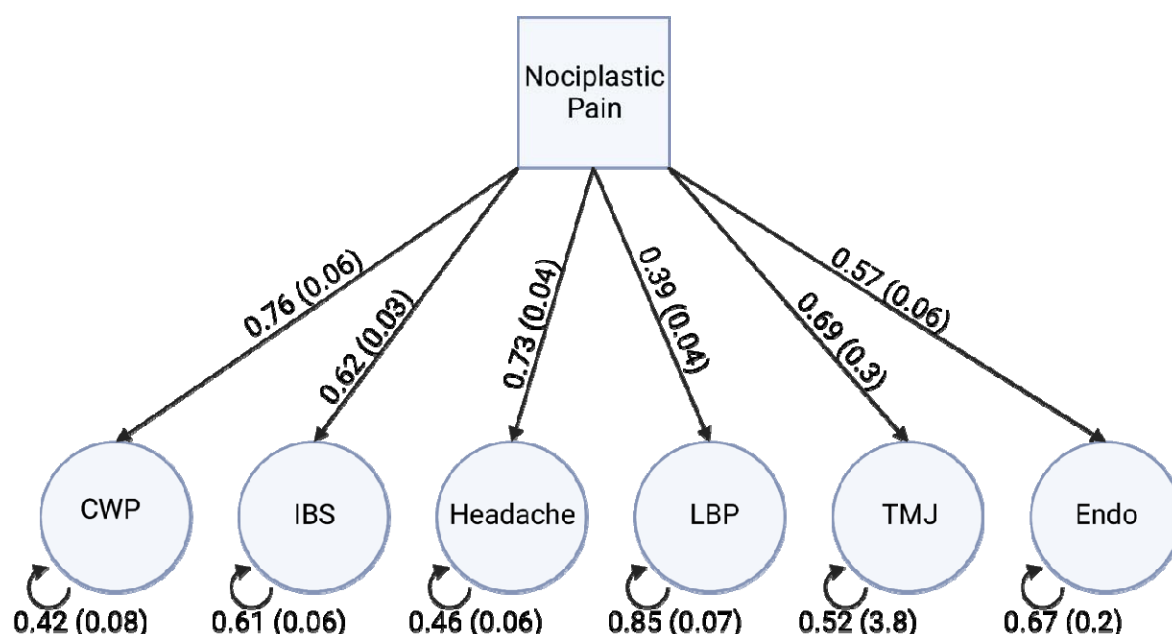
					Prevalence	Prevalence
Chronic widespread pain	CWP	Rahman et al 2021 (6)	6914	242929	0.029	0.01 (32)
Endometriosis	NA	FinnGenn (R9, May 2023)	15088	107564	0.123	0.1 (33)
Low-back pain	LBP	Suri et al 2021 (34)	49182	51629	0.488	0.075 (35)
Broad headache	NA	Meng et al 2018 (36)	74461	149312	0.5	0.158 (37)
Temporomandibular joint disorder	TMJ	Jiang et al 2021 (38) (GWAS Catalog)	217	456131	0.0005	0.3 (39)
Irritable Bowel Syndrome	IBS	Eijsbouts et al 2021 (40) (GWAS Catalog)	53400	433201	0.12	0.1 (41)

**Table 1: Sources and sample sizes for COPC trait GWAS. Sample and population prevalence estimates, and sources for population prevalence estimates (measures used in multivariable LDSC) are also given.**

## Common factor GWAS

GenomicSEM was used to carry out a common-factor GWAS. First, we prepared (munged) GWAS summary statistics using munge function included in GenomicSEM. Sum of effective sample sizes was calculated for traits LBP and IBS, as these represented GWAS-meta-analyses of case-control phenotypes (see also <https://github.com/GenomicSEM/GenomicSEM/wiki/2.1-Calculating-Sum-of-Effective-Sample-Size-and-Preparing-GWAS-Summary-Statistics>). Briefly, variants with info values  $\leq 0.9$ , minor allele frequency (MAF)  $\leq 0.01$ , that were not single nucleotide polymorphisms (SNPs), with missing values, that were strand ambiguous, those with duplicated rsIDs, those without a match in the HapMap 3 SNP file used for quality control, and those with mismatched allele labels compared to the HapMap 3 SNP file were removed. Next, multivariable linkage disequilibrium (LD)- score regression was carried out to produce matrices used in the common-factor GWAS step. GenomicSEM 'sumstats' function was used for a final preparation step, jointly processing the GWAS summary statistics files for each of the 6 traits included in the analysis. This function merges across all summary statistics using listwise deletion, performs quality control

(including backing out logistic betas, checking for allele mismatches, missing data, and duplicate variants), and merges with the reference SNP file. Output from multivariable LD-score regression, and from GenomicSEM 'sumstats', is taken forward to common factor GWAS using GenomicSEM 'commonFactorGWAS' function. Our chosen common-factor model, where the single latent factor represents 'nociplastic type pain', is shown in Figure 1.



**Figure 1: Path diagram of common factor GWAS GenomicSEM model. Values = Standardized Estimate (Standard Error).**

First, we fitted the common-factor GWAS model without SNP effects and noted loadings of each trait onto the singular factor (Figure 1). These were significant (Table 2,  $p < 0.05$ ) and model fitting was successful, so we proceeded to fitting the model including SNP effects with 'smooth\_check=T'. We note that TMJ variance SE is very large (Figure 1, SE = 3.8), likely due to the small case number in the TMJ GWAS, but factor loading was significant (Table 2, 0.69,  $p < 0.05$ ) so we elected to include TMJ in this model. Output produced from the above model is equivalent to GWAS summary statistics (magnitude of association between each SNP and a trait of interest, nociplastic-type pain) for the latent factor onto which the 6 traits load – which we describe as nociplastic-type pain. Next, we calculate an estimated sample size for the 'GWAS' of nociplastic-

type pain according to instruction provided on the GenomicSEM github, first reserving SNP results for SNPs with MAF  $\leq 0.4$  and  $\geq 0.1$ , and then calculating  $\hat{N}$  according to the formula for each SNP:

$$\frac{1}{(2 * MAF * (1 - MAF)) * SE^2}$$

Taking the mean this set of values then gives  $\hat{N}$ . For nociplastic-type pain  $\hat{N} = 578,561.3$  (where this sample size is necessary in calculations e.g., LD-score regression analyses for genetic correlation, we use the value 578,561).

Trait	Unstandardized_Estimate	Unstandardized_SE	Standardized_Estimate	Standardized_SE	p_value
CWP	0.32	0.02	0.76	0.06	1.78E-41
IBS	0.18	0.01	0.62	0.03	3.87E-73
Broad Headache	0.24	0.01	0.73	0.04	4.56E-81
LBP	0.07	0.01	0.39	0.04	5.53E-28
TMJ	0.30	0.13	0.69	0.29	1.88E-02
Endometriosis	0.13	0.01	0.57	0.06	3.34E-20

**Table 2: Standardized and unstandardized common-factor GWAS model factor loadings and p values.**

### Defining significant, independent SNPs

Common-factor GWAS output (nociplastic type pain summary statistics) was then taken forward and analyzed within FUMA (Functional Mapping and Annotation of Genome-Wide Association Studies) (42), a web-based suite of tools for downstream GWAS analyses.

Genome-wide significant, independent SNPs were defined using FUMA as SNPs associated with nociplastic pain factor ( $p < 5 \times 10^{-8}$ ) and independent from one another ( $r^2 < 0.6$ ).



## **LD-score Regression**

We used 'ldsc' (43,44) to estimate SNP-heritability of nociplastic-type pain, and to estimate genetic correlation between nociplastic-type pain and MCP, and between nociplastic-type pain and rheumatoid arthritis, a chronic pain condition not usually considered a COPC.

## **Multisite chronic pain vs nociplastic-type pain**

We obtained summary statistics for GWAS of multisite chronic pain (MCP) (5), a general chronic pain phenotype previously found to be heritable, polygenic, and significantly associated with gene expression changes in the brain through download from University of Glasgow Enlighten (research data repository). MCP summary statistics were munged as previously described, using 'ldsc' package, as was common factor GWAS output for nociplastic-type pain. We then carried out LD-score regression, estimating genetic correlation between MCP and nociplastic-type pain.

## **Rheumatoid arthritis vs nociplastic-type pain**

We obtained rheumatoid arthritis GWAS summary statistics from a recent large GWAS (N = 311, 292) (45) from GWAS Catalog (46). As previously described and again using 'ldsc', we calculated genetic correlation between nociplastic type pain and rheumatoid arthritis.

## **Multivariate Transcriptome-Wide Association Study**

An extension of GenomicSEM common-factor GWAS is multivariate (common-factor) TWAS. Here, FUSION TWAS (47) output for each of the 6 COPCs serves as input (as GWAS summary statistics did for common-factor GWAS in GenomicSEM common-factor GWAS). We performed TWAS in each of the 6 COPC traits using GWAS summary statistics and the FUSION package and scripts, and using pre-computed predictive models for all 49 GTEx (48) v8 tissues available at <http://gusevlab.org/projects/fusion/#download-pre-computed-predictive-models>. We used models including genes with significant heritability and with weights calculated using all genetic ancestries, as recommended for typical analyses and to increase



sensitivity. FUSION output (TWAS summary statistics for each of the 6 COPCs) was prepared using the GenomicSEM 'read\_fusion' function, and then taken forward with multivariable LDSC output from previous common-factor GWAS analysis to perform common-factor TWAS.

Significant gene-tissue association findings were defined at the tissue-wide and experiment-wide level, through Bonferroni multiple testing correction across all tests within a tissue and across all genes tested across all tissues respectively.

### **Specific and Non-Specific Genes**

As part of multivariate GWAS and TWAS analyses, a Q (heterogeneity) value is calculated per SNP-trait association (or per gene-tissue-trait association), indicating degree of heterogeneity (i.e., the proportion of gene expression or SNP association effect that is mediated through pathways other than the shared common factor). Specific (to nociplastic type pain) genes were identified through subsetting multivariate TWAS output to include genes in significant (tissue-wide) gene-tissue associations and with non-significant Q p values (i.e., non-significant heterogeneity). Non-specific genes were also identified as above but with significant Q p values. Q p values were multiple test corrected using Bonferroni testing within-tissue. ( $Qp_{adj} = Qp/N$  tests in that tissue).

### **Tissue enrichment analyses**

We carried out binomial tests of enrichment to investigate whether certain tissues showed a higher proportion of tissue-wide significant ( $P_{bonf} < 0.05$ ) associations results than expected by chance, and whether certain tissues showed higher proportion of nominally significant ( $P < 0.05$ ) associations than expected by chance.

### **Gene-set enrichment analyses**

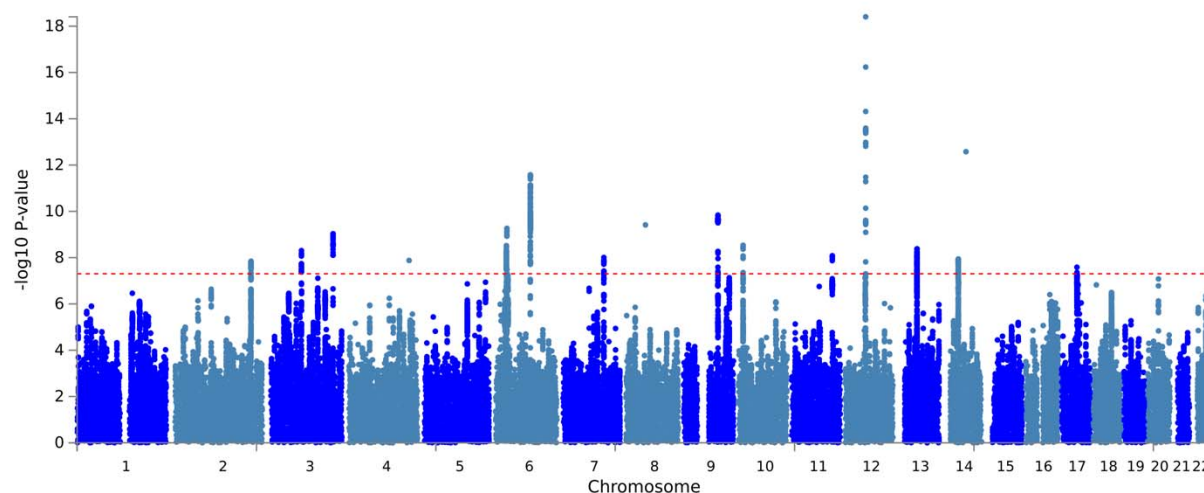
Gene-set enrichment analyses on all tissue wide significant genes, on tissue wide significant and specific genes ( $Qp_{adj} > 0.05$ ), and on tissue wide significant non-specific genes ( $Qp_{adj} < 0.05$ ) was carried out using FUMA, with all genes tested in

247 multivariate TWAS and with recognized Ensembl gene ID as background (N = 26455  
248 genes).  
249  
250

## Results

### Common-factor GWAS

We fitted a common factor GWAS model (including individual SNP effects), including data for six COPC traits (CWP, LBP, endometriosis, TMJ, IBS, and broad headache). This model estimates the size of association between SNPs and a latent common factor onto which the six traits load (nociplastic type pain), producing results effectively equivalent to a standard GWAS of this unmeasured latent factor. We found a total of 663 SNPs across fifteen GWAS genomic risk loci significantly associated with nociplastic-type pain ( $p < 5 \times 10^{-8}$ ), consisting of 24 independent SNPs. The majority of these SNPs (18/24) have not been previously associated with pain-related traits (Supplementary Table 1).



**Figure 2: Manhattan plot of nociplastic-type pain common-factor GWAS – red dotted line = genome-wide p value significance threshold ( $-\log_{10}(5 \times 10^{-8})$ ).**

### Heritability and Genetic Correlation

Nociplastic-type pain was found to be significantly heritable (liability scale SNP- $h^2 = 0.03$ , SE = 0.0014), and was significantly genetically correlated with MCP ( $r_g = 0.92$ , SE = 0.04) and to a lesser degree with rheumatoid arthritis ( $r_g = 0.18$ , SE = 0.04).

### Multivariate TWAS

We found 819 tissue-wide significant gene-tissue associations consisting of 127 unique genes, across all 49 tested GTEx tissues. As part of multivariate GWAS and TWAS analyses with GenomicSEM, a Q (heterogeneity) value is calculated per association. This value indicates degree of heterogeneity (i.e., the proportion of gene expression or SNP association effect that is mediated through pathways other than the shared common factor, across the traits included in the model that load onto the common factor). Specific genes were identified through subsetting multivariate TWAS output to include genes in significant (tissue-wide) gene-tissue associations and with non-significant Q p values (i.e., non-significant heterogeneity). Non-specific genes were also identified as above but with significant Q p values. Q p values were multiple test corrected using Bonferroni testing within-tissue. ( $Qp_{adj} = Qp/N$  tests in that tissue).

450 of the 819 tissue-wide significant gene-tissue associations showed significant heterogeneity ( $Q p_{adj} < 0.05$ ), and the remaining 369 did not ( $Q p_{adj} > 0.05$ ). Twenty-eight unique genes showed significant heterogeneity across all tested tissues ( $Q p_{adj} < 0.05$ ), and 94 showed non-significant heterogeneity ( $Q p_{adj} > 0.05$ ). Five genes showed both significant and non-significant heterogeneity depending on tissue, and were excluded from gene-set enrichment tests of specific/ heterogeneous genes.

## Tissue enrichment

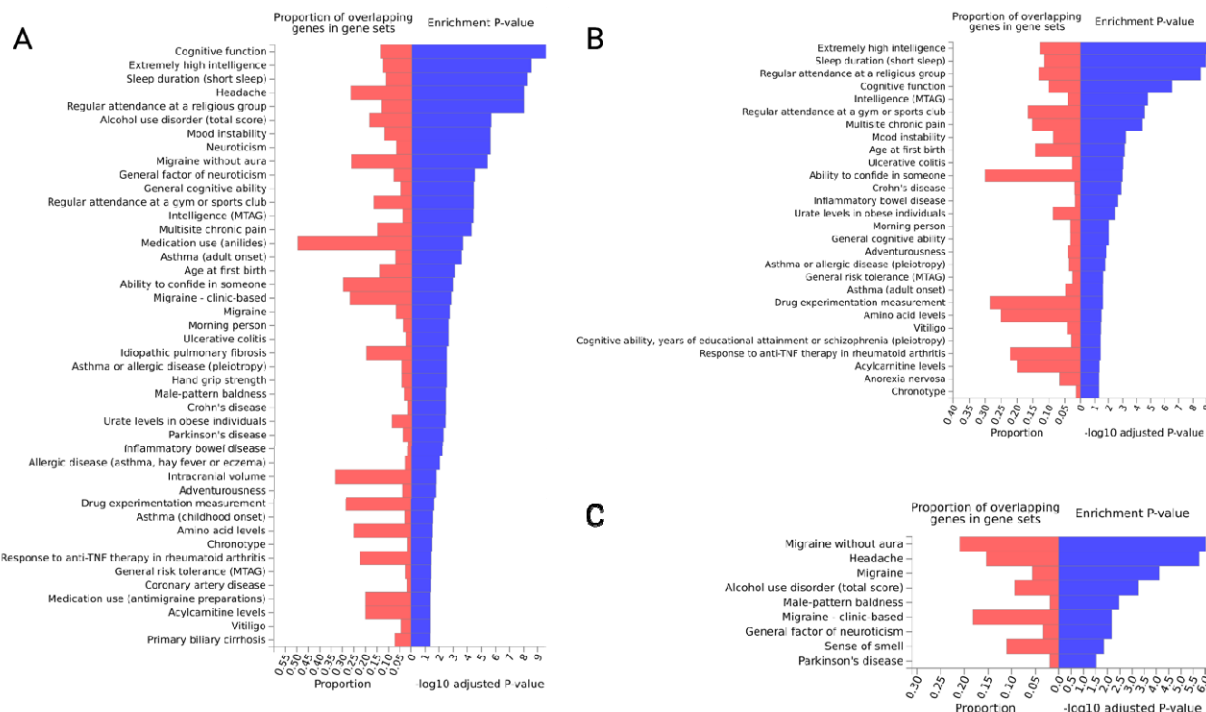
We found that 9 of the 49 tested tissues showed a different proportion of tissue-wide significant gene-tissue TWAS findings than expected by chance. Cultured fibroblasts, atrial appendage of the heart, tibial nerve, and thyroid were enriched for significant associations, whereas amygdala, substantia nigra, EBV-transformed lymphocytes, terminal ileum of the small intestine and vagina showed significantly fewer significant associations than expected. At the nominal significance level (unadjusted  $P < 0.05$ ), two tissues showed a different proportion of associations than expected by chance – whole blood and skeletal muscle were enriched for significant (unadjusted  $P < 0.05$ ) associations.

## Gene-set enrichment

To explore potential mechanisms in nociplastic pain and shared with nociplastic type pain and other complex traits of interest, we performed three sets of gene-set enrichment tests using FUMA. First we used all unique tissue-wide significant gene findings from multivariate TWAS, then a subset of those findings that showed significant heterogeneity (non-specific genes) and finally a subset with non-significant heterogeneity (specific genes).

### **Tissue-wide significant genes**

Of 127 unique genes, 120 had a recognized ensemble gene ID within FUMA and were included in analyses. Eight positional gene sets were enriched ( $p_{adj} < 0.05$ ) for nociplastic-type-pain associated genes; chr17q21, chr3p21, chr9q33, chr16q22, chr12q13, chr2q34, chr4q33, and chr1q21. KEGG pathway gene set nitrogen metabolism was also enriched for nociplastic pain genes, as was chemical and genetic perturbation gene set 'SU\_LIVER' (genes specifically upregulated in the liver). A total of 44 GWAS Catalog traits including cognitive function, extremely high intelligence, sleep duration, and headache were enriched for nociplastic-type pain genes (Supplementary Table 2, Figure 3A). Additional gene sets enriched for nociplastic pain genes including microRNA target sets, transcription factor target sets, computational gene sets and cancer gene modules can be found in Supplementary Table 3.



**Figure 3: GWAS catalog trait gene sets significantly enriched for A: nociplastic-type pain genes found in multivariate TWAS analysis, B: Specific nociplastic type pain genes, C: Non-specific nociplastic type pain genes.**

### Specific genes

90 of 94 tissue-wide significant genes without significant heterogeneity across all tissues where a significant association was found, and with an ensembl gene ID recognized within FUMA were included in this analysis. We found seven positional gene sets to be enriched for specific nociplastic pain genes, including chr3p21, chr9q33, chr16q22, chr2q34, chr4q33, chr12q13, and chr1q21. Chemical and genetic perturbation gene set 'SU\_LIVER' was enriched for specific nociplastic pain genes, as was nitrogen metabolism, and the hallmark gene set fatty acid metabolism. Additional gene sets enriched for specific nociplastic pain genes are listed at Supplementary Table 4. We found 28 GWAS Catalog traits enriched for specific nociplastic pain genes (Supplementary Table 5, Figure 3B), including extremely high intelligence, sleep duration, regular attendance at a religious group, and cognitive function.

### Non-specific genes

25 of 28 tissue-wide significant genes with significant heterogeneity across all tissues where a significant association was found, and with an ensembl gene ID recognized within FUMA were included in this analysis. Positional gene sets chr17q21, and chr6q16 were enriched for these non-specific nociplastic pain genes, as were several cancer gene neighborhoods (Supplementary Table 6) and 9 GWAS Catalog traits including migraine without aura, headache, and migraine (Supplementary Table 7, Figure 3C).

There was no overlap in gene sets enriched for specific and non-specific genes, and migraine and headache gene sets were enriched for non-specific nociplastic-type pain genes only.



## Discussion

We carried out common-factor GWAS and TWAS analyses incorporating six COPCs, to investigate genetic variation associated with nociplastic type pain, a mechanistic pain descriptor and type of pain likely important across COPCs. We found that nociplastic type pain is a moderately heritable trait with similar liability-scale SNP heritability to rheumatoid arthritis. Our findings indicate that nociplastic type pain is a complex, polygenic trait, and we found 24 independent SNPs significantly associated with this trait.

### **Nociplastic type pain is genetically correlated with rheumatoid arthritis and MCP**

We observed extremely high genetic correlation between nociplastic type pain and MCP ( $r_g = 0.92$ ). Individuals with a non-zero trait value for MCP could as a group be majority composed of individuals with COPCs – to assess this we carried out a series of Fisher's exact tests on counts of COPC ICD10 code occurrences within and outside of MCP 'cases' (MCP trait value  $\geq 1$ ) in UK Biobank (see Supplementary Table 8). We found that for ICD10 category codes for COPCs that were available in UK Biobank (back pain, post-viral fatigue (ME/CFS), migraine, IBS, endometriosis and tension headache), all were significantly overrepresented in MCP cases compared to those without chronic pain (MCP trait value 0). Additionally, the main characteristic of MCP (increasing number of sites of chronic pain) might sufficiently represent nociplastic type pain – a recent paper outlining clinical criteria in assessing and grading nociplastic pain lists regional (as opposed to discrete) location and spread of pain as a key indicator of possible nociplastic pain (49).

### **Traits enriched for specific and non-specific nociplastic-type pain genes indicate distinct pathology of migraine and headache**

Gene set enrichment results showed certain genes significantly contribute to variation in nociplastic pain phenotype, but that a large amount of their influence on COPC traits is not mediated by nociplastic type pain (non-specific genes i.e., genes with significant heterogeneity in genomicSEM analyses). GWAS trait gene sets enriched for such genes included migraine and headache, suggesting involvement of factors outside of

nociplastic pain in these traits. Non-nociplastic-type-pain-specific genes were also enriched in trait gene sets for male-pattern baldness (androgenic alopecia) – alopecia, including androgenic alopecia, has been previously associated with drugs that block CGRP (calcitonin gene related peptide), a treatment for acute migraine and migraine prevention (50).

### **Potential metabolic and liver related pathology in nociplastic pain**

GWAS trait gene sets enriched for specific nociplastic type pain genes included amino acid and acylcarnitine levels. Changes in amino acid levels are associated with fibromyalgia, migraine, osteoarthritis and complex regional pain syndrome (51). High acylcarnitine levels can indicate disorders in fatty acid metabolism, and diets high in certain fatty acids have been associated with increased allodynia in rodent models, and associated with human chronic pain conditions (52). Lipids generally are also involved in acute and chronic inflammation (53) and changes to acylcarnitine metabolism are observed in dementia, certain cancers, heart failure and coronary artery disease (54). Changes to circulating lipids have also been observed in COPCs including fibromyalgia, headache, migraine, TMD, low back pain and IBS (55), and cholesterol metabolism in microglia has been linked to neuropathic pain in a rodent model (56). In addition, certain drug therapies used in treatment for systemic lupus erythematosus and rheumatoid arthritis can disrupt lipid metabolism (57), and experiencing chronic pain is associated with changes in diet that can result in changes in lipid profiles (58).

Genes specifically upregulated in liver tissue were also enriched for specific nociplastic type pain genes. This could be indicative of liver damage as long-term use of NSAIDs as is common in chronic pain conditions including COPCs. While serious liver injury in NSAID use is rare, NSAIDs are one of the main causes of acute hepatitis globally, and there is some evidence that serum aminotransferase levels (where elevated levels can indicate liver disease or dysfunction) are transiently elevated without other symptoms with NSAID use (59,60).

Curcuminoids (components of turmeric) have been previously investigated in treatment of neuropathic pain, and previous studies found that a possible mechanism of action in alleviating neuropathic pain was via modulating nitrogen metabolism (61). Although ME/CFS summary statistics were not used in this analysis, changes in nitrogen metabolism have been implicated in this condition (62), and our findings suggest these metabolic changes may not be unique to ME/CFS but instead shared across COPCs through influence on nociplastic pain in particular. Those with ME/CFS have also been found to have altered lipid, acylcarnitine, and amino acid levels compared to non-ME/CFS controls (63).

### **Positional gene sets enriched for nociplastic type pain genes suggest immune and musculoskeletal factors**

Positional gene sets associated with specific nociplastic pain genes have also been previously linked to COVID-19 susceptibility and severity (chr3p21, (64)), schizophrenia and bipolar disorder (chr3p21, (65)), and Alzheimer disease in an African American cohort (chr3p21, (66)). Regions in chr9q33 are frequently deleted in certain cancers (67,68), and chr16q22 has been previously associated with a rare duplication syndrome accompanied by varying psychiatric disorder symptoms (69), and with schizophrenia (70). A type of syndactyly (involving fusion of digits and toes) has been associated with chr2q34 (71), along with autoimmunity, amyotrophic lateral sclerosis and schizophrenia (72), and age-related degeneration in the lumbar spine (73). Variants in the chr12q13 region have been associated with childhood obesity (74) and asthma (75,76). Finally, chr1q21 has been previously implicated in GWAS of circulating IL6 levels (77). These findings suggest shared immune and musculoskeletal related etiology in these phenotypes and nociplastic type pain.

In contrast, positional gene sets enriched for non-specific nociplastic pain genes included chr17q21, where duplication and deletion have previously been associated with syndromes involving distinctive craniofacial features, developmental delay, and cardiac symptoms (OMIM 610443, 613533), and genes at chr6q16 with cardiac phenotypes (78) and cluster headache and migraine (79).

## **Tissue enrichment of nociplastic type pain genes highlights thyroid, heart, and tibial nerve involvement**

Hypothyroidism can both cause pain and worsen pain experienced as part of comorbid chronic pain conditions. Autoimmune disorders including autoimmune hypothyroidism may also be misdiagnosed as fibromyalgia (80–82). Enrichment of nociplastic type pain gene associations here may therefore indicate high levels of thyroid involvement in COPCs, or extensive presence of individuals with comorbid (or misdiagnosed) hypothyroidism among COPC GWAS participants, or both.

Atrial appendages of the heart (left and right) are small pouches located on the front upper surface of the right atrium, and anterior to the left atrium and parallel to the left pulmonary veins. Atrial fibrillation, the most common abnormal heart rhythm in adults, can lead to formation of clots (most commonly in the left atrial appendage) and subsequent stroke (83–85). ECG abnormalities, particularly atrial fibrillation, have been linked to chronic pain (86,87), and with physiological stress associated with chronic illness and major surgery (88,89). Chronic pain has also been associated with higher risk of myocardial infarction, death due to cardiovascular event, heart failure, and stroke (90). Our findings may suggest this atrial fibrillation in particular is common in nociplastic pain and COPCs, increasing risk for stroke in these patient populations.

The tibial nerve is one of two terminal branches of the sciatic nerve, providing motor and sensory innervation to almost all of the posterior foot and leg. An ultrasound study comparing participants with fibromyalgia and controls found significant increased cross-sectional area in several nerves, including tibial nerve (91). Tarsal tunnel syndrome, a nerve entrapment syndrome analogous to carpal tunnel syndrome in the wrist, was also found to be more common in fibromyalgia patients (92) – while causes of tarsal tunnel syndrome are likely multifactorial, enlarged tibial nerve diameter may contribute to this nerve entrapment. Neuromodulation involving the tibial nerve (e.g., through percutaneous tibial nerve stimulation) has also been investigated in the treatment of a range of pelvic pain disorders, including IBS, dysmenorrhea, and bladder pain syndrome (93). One caveat is that tibial nerve is the only peripheral nerve tissue

sampled in GTEx – other peripheral nerve tissues, potentially also representing therapeutic targets in neuromodulation for chronic pain, could potentially be enriched for nociplastic pain gene expression.

## Conclusions

COPCs are a subset of chronic pain conditions that are commonly comorbid and more prevalent in women and AFAB individuals. A third mechanistic pain descriptor, nociplastic pain, may represent the pain experience of those with COPCs, where tissue and/or nerve damage is often not present. Using existing COPC GWAS data and a network-informed genomics approach, GenomicSEM, we found genetic variation at the SNP, gene expression, and gene-set level associated with nociplastic type pain. We also explored genetic overlap with other chronic pain phenotypes, tissue enrichment of nociplastic pain genes, and differences in genes specific and non-specific to nociplastic-type pain. Our findings indicate distinct pathology in migraine and headache compared to other COPCs, and link this distinct pathology with traits such as Parkinson disease, sense of smell, and androgenic alopecia, as well as providing unique genes associated with this distinct pathology. We also find tissue enrichment relevant to chronic pain comorbidities including stroke, and therapies such as peripheral nerve stimulation. Our findings contribute to further understanding mechanisms of nociplastic type pain, and indicate this type of pain is important across COPCs.

## References

1. Mills SEE, Nicolson KP, Smith BH (2019): Chronic pain: a review of its epidemiology and associated factors in population-based studies. *Br J Anaesth* 123: e273–e283.
2. Nicholas M, Vlaeyen JWS, Rief W, Barke A, Aziz Q, Benoliel R, *et al.* (2019): The IASP classification of chronic pain for ICD-11: chronic primary pain. *Pain* 160: 28–37.
3. Treede R-D, Rief W, Barke A, Aziz Q, Bennett MI, Benoliel R, *et al.* (2019): Chronic pain as a symptom or a disease: the IASP Classification of Chronic Pain for the International Classification of Diseases (ICD-11). *Pain* 160: 19–27.
4. IASP Announces Revised Definition of Pain (n.d.): *International Association for the Study of Pain (IASP)*. Retrieved September 20, 2022, from <https://www.iasp-pain.org/publications/iasp-news/iasp-announces-revised-definition-of-pain/>
5. Johnston KJA, Adams MJ, Nicholl BI, Ward J, Strawbridge RJ, Ferguson A, *et al.* (2019): Genome-wide association study of multisite chronic pain in UK Biobank. *PLOS Genet* 15: e1008164.
6. Rahman MS, Winsvold BS, Chavez Chavez SO, Børte S, Tsepilov YA, Sharapov SZ, *et al.* (2021): Genome-wide association study identifies *RNF123* locus as associated with chronic widespread musculoskeletal pain. *Ann Rheum Dis* 80: 1227–1235.
7. Tsepilov YA, Freidin MB, Shadrina AS, Sharapov SZ, Elgaeva EE, Zundert J van, *et al.* (2020): Analysis of genetically independent phenotypes identifies shared genetic factors associated with chronic musculoskeletal pain conditions. *Commun Biol* 3: 329.

8. Yong RJ, Mullins PM, Bhattacharyya N (2022): Prevalence of chronic pain among adults in the United States. *PAIN* 163: e328.
9. Global, regional, and national burden of 12 mental disorders in 204 countries and territories, 1990–2019: a systematic analysis for the Global Burden of Disease Study 2019 (2022): *Lancet Psychiatry* 9: 137–150.
10. Terminology | International Association for the Study of Pain (n.d.): *International Association for the Study of Pain (IASP)*. Retrieved September 20, 2022, from <https://www.iasp-pain.org/resources/terminology/>
11. Fitzcharles M-A, Cohen SP, Clauw DJ, Littlejohn G, Usui C, Häuser W (2021): Nociceptive pain: towards an understanding of prevalent pain conditions. *The Lancet* 397: 2098–2110.
12. Maixner W, Fillingim RB, Williams DA, Smith SB, Slade GD (2016): Overlapping Chronic Pain Conditions: Implications for Diagnosis and Classification. *J Pain* 17: T93–T107.
13. Schrepf A, Phan V, Clemens JQ, Maixner W, Hanauer D, Williams DA (2020): ICD-10 Codes for the Study of Chronic Overlapping Pain Conditions in Administrative Databases. *J Pain* 21: 59–70.
14. Till SR, Schrepf A, Clauw DJ, Harte SE, Williams DA, As-Sanie S (2023): Association Between Nociceptive Pain and Pain Severity and Impact in Women With Chronic Pelvic Pain. *J Pain* S1526-5900(23)00369–3.
15. Harte SE, Harris RE, Clauw DJ (2018): The neurobiology of central sensitization. *J Appl Biobehav Res* 23: e12137.



16. Schrepf A, Gallop R, Naliboff B, Harte SE, Afari N, Lai HH, *et al.* (2022): Clinical Phenotyping for Pain Mechanisms in Urologic Chronic Pelvic Pain Syndromes: A MAPP Research Network Study. *J Pain* 23: 1594–1603.
17. Jr L, Da W, Ms L, Dj C, Bd N, Na R, *et al.* (2014): The MAPP research network: design, patient characterization and operations. *BMC Urol* 14. <https://doi.org/10.1186/1471-2490-14-58>
18. Neblett R, Cohen H, Choi Y, Hartzell M, Williams M, Mayer TG, Gatchel RJ (2013): THE CENTRAL SENSITIZATION INVENTORY (CSI): ESTABLISHING CLINICALLY-SIGNIFICANT VALUES FOR IDENTIFYING CENTRAL SENSITIVITY SYNDROMES IN AN OUTPATIENT CHRONIC PAIN SAMPLE. *J Pain Off J Am Pain Soc* 14: 438–445.
19. Ghavidel-Parsa B, Bidari A, Atrkarroushan Z, Khosousi M (2021): Implication of the Nociplastic Features for Clinical Diagnosis of Fibromyalgia: Development of the Preliminary Nociplastic-Based Fibromyalgia Features (NFF) Tool. *ACR Open Rheumatol* 4: 260–268.
20. Perugino F, De Angelis V, Pompili M, Martelletti P (2022): Stigma and Chronic Pain. *Pain Ther.* <https://doi.org/10.1007/s40122-022-00418-5>
21. Bean DJ, Dryland A, Rashid U, Tuck NL (2022): The Determinants and Effects of Chronic Pain Stigma: A Mixed Methods Study and the Development of a Model. *J Pain* 23: 1749–1764.
22. Collier R (2018): “Complainers, malingerers and drug-seekers” — the stigma of living with chronic pain. *Can Med Assoc J* 190: E204–E205.

23. De Ruddere L, Craig KD (2016): Understanding stigma and chronic pain: a-state-of-the-art review. *Pain* 157: 1607–1610.
24. Quintner J (2020): Why Are Women with Fibromyalgia so Stigmatized? *Pain Med* 21: 882–888.
25. Wakefield EO, Belamkar V, Litt MD, Puhl RM, Zempsky WT (2021): “There’s Nothing Wrong With You”: Pain-Related Stigma in Adolescents With Chronic Pain. *J Pediatr Psychol* 47: 456–468.
26. Jackson JE (2005): Stigma, liminality, and chronic pain: Mind-body borderlands. *Am Ethnol* 32: 332–353.
27. Wakefield EO, Kissi A, Mulchan SS, Nelson S, Martin SR (2022): Pain-related stigma as a social determinant of health in diverse pediatric pain populations. *Front Pain Res* 3. Retrieved June 13, 2023, from <https://www.frontiersin.org/articles/10.3389/fpain.2022.1020287>
28. Samulowitz A, Gremyr I, Eriksson E, Hensing G (2018): “Brave Men” and “Emotional Women”: A Theory-Guided Literature Review on Gender Bias in Health Care and Gendered Norms towards Patients with Chronic Pain. *Pain Res Manag* 2018: 6358624.
29. Nijs J, Lahousse A, Kapreli E, Bilika P, Saraçoğlu İ, Malfliet A, *et al.* (2021): Nociplastic Pain Criteria or Recognition of Central Sensitization? Pain Phenotyping in the Past, Present and Future. *J Clin Med* 10: 3203.
30. Marcianò G, Vocca C, Evangelista M, Palleria C, Muraca L, Galati C, *et al.* (2023): The Pharmacological Treatment of Chronic Pain: From Guidelines to Daily Clinical Practice. *Pharmaceutics* 15: 1165.

31. Hajdarevic R, Lande A, Mehlsen J, Rydland A, Sosa DD, Strand EB, *et al.* (2022): Genetic association study in myalgic encephalomyelitis/chronic fatigue syndrome (ME/CFS) identifies several potential risk loci. *Brain Behav Immun* 102: 362–369.
32. Andrews P, Steultjens M, Riskowski J (2018): Chronic widespread pain prevalence in the general population: A systematic review. *Eur J Pain* 22: 5–18.
33. Taylor HS, Kotlyar AM, Flores VA (2021): Endometriosis is a chronic systemic disease: clinical challenges and novel innovations. *The Lancet* 397: 839–852.
34. Suri P, Stanaway IB, Zhang Y, Freidin MB, Tsepilov YA, Carrell DS, *et al.* (2021): Genome-wide association studies of low back pain and lumbar spinal disorders using electronic health record data identify a locus associated with lumbar spinal stenosis. *Pain* Publish Ahead of Print.  
<https://doi.org/10.1097/j.pain.0000000000002221>
35. Wu A, March L, Zheng X, Huang J, Wang X, Zhao J, *et al.* (2020): Global low back pain prevalence and years lived with disability from 1990 to 2017: estimates from the Global Burden of Disease Study 2017 [no. 6]. *Ann Transl Med* 8: 299–299.
36. Meng W, Adams MJ, Hebert HL, Deary IJ, McIntosh AM, Smith BH (2018): A Genome-Wide Association Study Finds Genetic Associations with Broadly-Defined Headache in UK Biobank (N = 223,773). *EBioMedicine* 28: 180–186.
37. Stovner LJ, Hagen K, Linde M, Steiner TJ (2022): The global prevalence of headache: an update, with analysis of the influences of methodological factors on prevalence estimates. *J Headache Pain* 23: 34.
38. Jiang L, Zheng Z, Fang H, Yang J (2021): A generalized linear mixed model association tool for biobank-scale data. *Nat Genet* 53: 1616–1621.

39. Valesan LF, Da-Cas CD, Réus JC, Denardin ACS, Garanhani RR, Bonotto D, *et al.* (2021): Prevalence of temporomandibular joint disorders: a systematic review and meta-analysis. *Clin Oral Investig* 25: 441–453.
40. Eijsbouts C, Zheng T, Kennedy NA, Bonfiglio F, Anderson CA, Moutsianas L, *et al.* (2021): Genome-wide analysis of 53,400 people with irritable bowel syndrome highlights shared genetic pathways with mood and anxiety disorders. *Nat Genet* 53: 1543–1552.
41. Canavan C, West J, Card T (2014): The epidemiology of irritable bowel syndrome. *Clin Epidemiol* 6: 71–80.
42. Watanabe K, Taskesen E, van Bochoven A, Posthuma D (2017): Functional mapping and annotation of genetic associations with FUMA. *Nat Commun* 8: 1826.
43. Bulik-Sullivan B, Finucane HK, Anttila V, Gusev A, Day FR, Loh P-R, *et al.* (2015): An atlas of genetic correlations across human diseases and traits [no. 11]. *Nat Genet* 47: 1236–1241.
44. Bulik-Sullivan BK, Loh P-R, Finucane HK, Ripke S, Yang J, Patterson N, *et al.* (2015): LD Score regression distinguishes confounding from polygenicity in genome-wide association studies [no. 3]. *Nat Genet* 47: 291–295.
45. Ha E, Bae S-C, Kim K (2021): Large-scale meta-analysis across East Asian and European populations updated genetic architecture and variant-driven biology of rheumatoid arthritis, identifying 11 novel susceptibility loci. *Ann Rheum Dis* 80: 558–565.

46. Sollis E, Mosaku A, Abid A, Buniello A, Cerezo M, Gil L, *et al.* (2023): The NHGRI-EBI GWAS Catalog: knowledgebase and deposition resource. *Nucleic Acids Res* 51: D977–D985.
47. Gusev A, Ko A, Shi H, Bhatia G, Chung W, Penninx BWJH, *et al.* (2016): Integrative approaches for large-scale transcriptome-wide association studies. *Nat Genet* 48: 245–252.
48. The GTEx Consortium atlas of genetic regulatory effects across human tissues (2020): 15.
49. Kosek E, Clauw D, Nijs J, Baron R, Gilron I, Harris RE, *et al.* (2021): Chronic nociplastic pain affecting the musculoskeletal system: clinical criteria and grading system. *PAIN* 162: 2629.
50. Woods RH (2022): Alopecia signals associated with calcitonin gene-related peptide inhibitors in the treatment or prophylaxis of migraine: A pharmacovigilance study. *Pharmacother J Hum Pharmacol Drug Ther* 42: 758–767.
51. Aroke EN, Powell-Roach KL (2020): The Metabolomics of Chronic Pain Conditions: A Systematic Review. *Biol Res Nurs* 22: 458–471.
52. Boyd JT, LoCoco PM, Furr AR, Bendele MR, Tram M, Li Q, *et al.* (2021): Elevated dietary  $\omega$ -6 polyunsaturated fatty acids induce reversible peripheral nerve dysfunction that exacerbates comorbid pain conditions [no. 6]. *Nat Metab* 3: 762–773.
53. Chiurchiù V, Leuti A, Maccarrone M (2018): Bioactive Lipids and Chronic Inflammation: Managing the Fire Within. *Front Immunol* 9. Retrieved June 8, 2023, from <https://www.frontiersin.org/articles/10.3389/fimmu.2018.00038>

54. Li S, Gao D, Jiang Y (2019): Function, Detection and Alteration of Acylcarnitine Metabolism in Hepatocellular Carcinoma. *Metabolites* 9: 36.
55. Sanders AE, Weatherspoon ED, Ehrmann BM, Soma PS, Shaikh SR, Preisser JS, *et al.* (2022): Circulating polyunsaturated fatty acids, pressure pain thresholds, and nociplastic pain conditions. *Prostaglandins Leukot Essent Fatty Acids* 184: 102476.
56. Navia-Pelaez JM, Choi S-H, dos Santos Aggum Capettini L, Xia Y, Gonen A, Agatista-Boyle C, *et al.* (2021): Normalization of cholesterol metabolism in spinal microglia alleviates neuropathic pain. *J Exp Med* 218: e20202059.
57. Robinson G, Pineda-Torra I, Ciurtin C, Jury EC (2022): Lipid metabolism in autoimmune rheumatic disease: implications for modern and conventional therapies. *J Clin Invest* 132. <https://doi.org/10.1172/JCI148552>
58. Elma Ö, Brain K, Dong H-J (2022): The Importance of Nutrition as a Lifestyle Factor in Chronic Pain Management: A Narrative Review [no. 19]. *J Clin Med* 11: 5950.
59. Sriuttha P, Sirichanchuen B, Permsuwan U (2018): Hepatotoxicity of Nonsteroidal Anti-Inflammatory Drugs: A Systematic Review of Randomized Controlled Trials. *Int J Hepatol* 2018: 5253623.
60. Meunier L, Larrey D (2018): Recent Advances in Hepatotoxicity of Non Steroidal Anti-inflammatory Drugs. *Ann Hepatol* 17: 187–191.
61. Xiang C, Chen C, Li X, Wu Y, Xu Q, Wen L, *et al.* (2022): Computational approach to decode the mechanism of curcuminoids against neuropathic pain. *Comput Biol Med* 147: 105739.

62. Armstrong CW, McGregor NR, Butt HL, Gooley PR (2014): Chapter Five - Metabolism in Chronic Fatigue Syndrome. In: Makowski GS, editor. *Advances in Clinical Chemistry*, vol. 66. Elsevier, pp 121–172.
63. Hoel F, Hoel A, Pettersen IKN, Rekeland IG, Risa K, Alme K, *et al.* (n.d.): A map of metabolic phenotypes in patients with myalgic encephalomyelitis/chronic fatigue syndrome. *JCI Insight* 6: e149217.
64. Shelton JF, Shastri AJ, Ye C, Weldon CH, Filshtein-Sonmez T, Coker D, *et al.* (2021): Trans-ancestry analysis reveals genetic and nongenetic associations with COVID-19 susceptibility and severity [no. 6]. *Nat Genet* 53: 801–808.
65. Yang Z, Zhou D, Li H, Cai X, Liu W, Wang L, *et al.* (2020): The genome-wide risk alleles for psychiatric disorders at 3p21.1 show convergent effects on mRNA expression, cognitive function, and mushroom dendritic spine [no. 1]. *Mol Psychiatry* 25: 48–66.
66. Ghani M, Reitz C, Cheng R, Vardarajan BN, Jun G, Sato C, *et al.* (2015): Association of Long Runs of Homozygosity With Alzheimer Disease Among African American Individuals. *JAMA Neurol* 72: 1313–1323.
67. Mei Q, Li X, Zhang K, Wu Z, Li X, Meng Y, *et al.* (2017): Genetic and Methylation-Induced Loss of miR-181a2/181b2 within chr9q33.3 Facilitates Tumor Growth of Cervical Cancer through the PIK3R3/Akt/FoxO Signaling Pathway. *Clin Cancer Res Off J Am Assoc Cancer Res* 23: 575–586.
68. Ortiz M, Towfic F, Flynt E, Stong N, Lata S, Sampath D, *et al.* (2019): Gene Expression and Genomic Markers Identify a Subpopulation of Poor Prognosis t(4;14) Patients in Newly Diagnosed Multiple Myeloma. *Blood* 134: 366.



69. Gunther K, Mowrey K, Farach LS (2021): Two new reported cases of 16q22.3q23.3 duplication syndrome highlight intrafamilial variability and potential sex expression differences within a rare duplication syndrome. *Clin Case Rep* 9: 1629–1633.
70. Bozorgmehr A, Sadeghi B, Tabatabaei Zavari ES, Bahrami E, Zamani F, Shahbazi A (2020): An integrative gene network-based approach to uncover the cellular and molecular infrastructures of schizophrenia. *Life Sci* 260: 118345.
71. Ahmed H, Akbari H, Emami A, Akbari MR (2017): Genetic Overview of Syndactyly and Polydactyly. *Plast Reconstr Surg Glob Open* 5: e1549.
72. Li YR, Glessner JT, Coe BP, Li J, Mohebbnasab M, Chang X, *et al.* (2020): Rare copy number variants in over 100,000 European ancestry subjects reveal multiple disease associations [no. 1]. *Nat Commun* 11: 255.
73. Åkesson K, Tenne M, Gerdhem P, Luthman H, McGuigan FE (2015): Variation in the PTH2R gene is associated with age-related degenerative changes in the lumbar spine. *J Bone Miner Metab* 33: 9–15.
74. LITTLETON SH, BRADFIELD J, PIPPIN JA, SU C, CHESI A, WELLS AD, *et al.* (2022): 298-OR: Variant-to-Gene Mapping at the Childhood Obesity Locus on chr12q13 and Subsequent Luciferase Assay Analyses Implicate rs71329as a Causal Variant within the 3' UTR of FAIM2. *Diabetes* 71: 298-OR.
75. Daya M, Rafaels N, Brunetti TM, Chavan S, Levin AM, Shetty A, *et al.* (2019): Association study in African-admixed populations across the Americas recapitulates asthma risk loci in non-African populations [no. 1]. *Nat Commun* 10: 880.

76. Demenais F, Margaritte-Jeannin P, Barnes KC, Cookson WO, Altmüller J, Ang W, *et al.* (2018): Multiancestry association study identifies new asthma risk loci that colocalize with immune cell enhancer marks. *Nat Genet* 50: 42–53.
77. CHARGE Inflammation working group, Ahluwalia TS, Prins BP, Abdollahi M, Armstrong NJ, Aslibekyan S, *et al.* (2021): Genome-wide association study of circulating interleukin 6 levels identifies novel loci. *Hum Mol Genet* 30: 393–409.
78. Wong D, Auguste G, Lino Cardenas CL, Turner AW, Chen Y, Song Y, *et al.* (2023): FHL5 Controls Vascular Disease-Associated Gene Programs in Smooth Muscle Cells. *Circ Res* 132: 1144–1161.
79. O'Connor E, Fourier C, Ran C, Sivakumar P, Liesecke F, Southgate L, *et al.* (2021): Genome-Wide Association Study Identifies Risk Loci for Cluster Headache. *Ann Neurol* 90: 193–202.
80. Atzeni F, Cazzola M, Benucci M, Di Franco M, Salaffi F, Sarzi-Puttini P (2011): Chronic widespread pain in the spectrum of rheumatological diseases. *Best Pract Res Clin Rheumatol* 25: 165–171.
81. Häuser W, Sarzi-Puttini P, Fitzcharles M-A (2019): Fibromyalgia syndrome: under-, over- and misdiagnosis. *Clin Exp Rheumatol* 37: 90–97.
82. Häuser W, Perrot S, Sommer C, Shir Y, Fitzcharles M-A (2017): Diagnostic confounders of chronic widespread pain: not always fibromyalgia. *Pain Rep* 2: e598.
83. Richardson AC, Omar M, Velarde G, Missov E, Percy R, Sattiraju S (2021): Right Atrial Appendage Thrombus in Atrial Fibrillation: A Case Report and Review of the Literature. *J Investig Med High Impact Case Rep* 9: 23247096211010050.

84. Regazzoli D, Ancona F, Trevisi N, Guarracini F, Radinovic A, Oppizzi M, *et al.* (2015): Left Atrial Appendage: Physiology, Pathology, and Role as a Therapeutic Target. *BioMed Res Int* 2015: 205013.
85. McIntyre WF, Healey J (2017): Stroke Prevention for Patients with Atrial Fibrillation: Beyond the Guidelines. *J Atr Fibrillation* 9: 1475.
86. Peuckmann-Post V, Eickhoff R, Becker M, von der Laage D (2012): [ECG changes in patients with chronic non-cancer pain: a prospective observational study]. *Schmerz Berl Ger* 26: 419–424.
87. Gong C, Ding Y, Liang F, Wu S, Tang X, Ding H, *et al.* (2022): Muscarinic receptor regulation of chronic pain-induced atrial fibrillation. *Front Cardiovasc Med* 9: 934906.
88. McIntyre WF, Connolly SJ, Healey JS (2018): Atrial fibrillation occurring transiently with stress. *Curr Opin Cardiol* 33: 58–65.
89. McIntyre WF, Um KJ, Cheung CC, Belley-Côté EP, Dingwall O, Devereaux PJ, *et al.* (2019): Atrial fibrillation detected initially during acute medical illness: A systematic review. *Eur Heart J Acute Cardiovasc Care* 8: 130–141.
90. Rönnegård A-S, Nowak C, Äng B, Ärnlöv J (2022): The association between short-term, chronic localized and chronic widespread pain and risk for cardiovascular disease in the UK Biobank. *Eur J Prev Cardiol* 29: 1994–2002.
91. Di Carlo M, Bianchi B, Cipolletta E, Farah S, Filippucci E, Salaffi F (n.d.): Imaging of the peripheral nervous system in nociplastic pain: An ultrasound study in patients with fibromyalgia. *J Neuroimaging* n/a. <https://doi.org/10.1111/jon.13104>

- 769 92. JO Y-S, YOON B, HONG JY, JOUNG C-I, KIM Y, NA S-J (2021): Tarsal tunnel  
770 syndrome in patients with fibromyalgia. *Arch Rheumatol* 36: 107–113.
- 771 93. Xiang H, Zhang T, Al-Danakh A, Yang D, Wang L (2022): Neuromodulation in  
772 Chronic Pelvic Pain: A Narrative Review. *Pain Ther* 11: 789–816.
- 773