

Sex differences in profile and in-hospital mortality for acute stroke in Chile: data from a nationwide hospital registry

Marilaura Nuñez MD^{1*}, Ma. Ignacia Allende MD^{1*}, Francisca Gonzalez PhD(c)^{1,2}, Gabriel Cavada PhD^{3,4,5}, Craig S. Anderson MD PhD^{1,6}, Paula Muñoz-Venturelli MD PhD^{1,6,7}

¹ Centro de Estudios Clínicos, Instituto de Ciencias e Innovación en Medicina, Facultad de Medicina Clínica Alemana Universidad del Desarrollo, Chile.

² Facultad de Ciencias de la Salud Blanquerna, Universitat Ramon Llull, Barcelona, Spain.

³ Escuela de Salud Pública, Facultad de Medicina Universidad de Chile, Santiago, Chile.

⁴ Facultad de Medicina Universidad Finis Terrae, Santiago, Chile

⁵ Unidad de Investigación Clínica, Clínica Alemana de Santiago, Santiago, Chile.

⁶ The George Institute for Global Health, Faculty of Medicine, University of New South Wales, Sydney, Australia.

⁷ Servicio de Neurología, Departamento de Neurología y Psiquiatría, Clínica Alemana de Santiago, Facultad de Medicina Clínica Alemana Universidad del Desarrollo, Santiago, Chile.

*: joint first authors

Corresponding author:

Dr. Paula Muñoz Venturelli
Email: paumunoz@udd.cl

Complete address: Centro de Estudios Clínicos, Instituto de Ciencias e Innovación en Medicina, Facultad de Medicina Clínica Alemana Universidad del Desarrollo, Avenida Plaza 680, Piso 4, Santiago, Chile.

Word count: 5031 words

NOTE: This preprint reports new research that has not been certified by peer review and should not be used to guide clinical practice.

Abstract (268 words)

Background: Knowledge of local contextual sex-differences in the profile and outcome for stroke can improve service delivery. We aimed to determine sex-differences in the profile of patients with acute stroke and their associations with in-hospital mortality (I-HM) in the national hospital database of Chile.

Methods: We present a retrospective cohort based on the analysis of the 2019 Chilean database of Diagnosis-Related Groups (DRGs), which represents 70% of the operational expenditure of the public health system. Multiple logistic regression models were used to determine independent associations of acute stroke (defined by main diagnosis ICD-10 codes) and I-HM, and reported with odds ratios (OR) and 95% confidence intervals (CI).

Results: Of 1,048,575 hospital discharges, 15,535 were for patients with acute stroke (7,074 [45.5%] in women) and 2,438 (15.6%) of them died in-hospital. Disparities by sex in sociodemographic and clinical characteristics were identified for stroke and main subtypes. Women with ischemic stroke had lower I-HM (OR 0.80, 95%CI 0.70-0.92; $P=0.002$) compared to men; other independent predictors included age (1.03, 1.03-1.04; $P<0.001$), chronic kidney disease (CKD) (1.48, 1.20-1.81; $P<0.001$), atrial fibrillation (1.56, 1.34-1.83; $P<0.001$), admission to hospital without a stroke unit (1.21, 1.05-1.39; $P=0.003$), and several risk factors. Conversely for intracerebral hemorrhage, women had higher I-HM than men (1.21, 1.04-1.41; $P=0.02$); other independent predictors included age (1.01, 1.00-1.01; $P<0.001$), CKD (1.54, 1.22-1.94; $P<0.001$), oral anticoagulant use (2.01, 1.56-2.59; $P<0.001$), and several risk factors.

Conclusion: Sex disparities in patients characteristics and in-hospital mortality exist for acute stroke in Chile. I-HM is higher for acute ischemic stroke in men and higher for ICH in women. Future research is need to better identify contributing factors.

Key words: inequalities, sex, risk factors, stroke, hospitalization, death, Chile.

Introduction

Despite advances in knowledge and interventions, stroke remains the second leading cause of death worldwide.¹ Further research is needed to better define determinants and risk factors to improve public health policies and a focus towards personalized medicine. Awareness is growing of sex differences in stroke, with studies consistently showing women are older at presentation, have more atrial fibrillation (AF) and hypertension (HT), and poorer functional outcomes.²⁻⁴ There are divergent results in regard sex disparities in case fatality,⁵⁻⁸ where most studies have been undertaken in developed countries, leaving a knowledge gap in relation to low- and middle-income countries where the influence of specific socioeconomic factors is likely to be important. Thus, our aim was to determine sex-differences in characteristics and determinants of in-hospital mortality for patients with acute stroke, using the nationwide hospital database of Chile.

Methods

Design

A retrospective cohort study undertaken according to STROBE criteria (see Table S1)⁹ using the Chilean International Refined Diagnosis Related Groups (DRGs) database of hospital discharges for the public health insurance scheme of Chile.¹⁰ DRG classification is an international standardized method of data collection from

clinical discharges that categorizes patients into homogenous groups based upon similar characteristics and according to disease complexity, hospital workload, quality of service, and associated costs.^{11,12}

Our analysis pertains to hospital discharges from 65 hospitals nationwide with high and medium complexity level during 2019, which represent 70% of the operating expenditure of the public health system in Chile.^{12,13} All patients (age ≥ 18 years) with a main diagnosis of stroke who were discharged from hospital between January 1 and December 31, 2019, and registered in the Chilean IR-DRG with complete data, were considered. In cases with multiple discharges, the second and subsequent events were included as re-admission events, except for admissions that occurred within 24 hours of last discharge which were considered as a continuous hospitalization of the first event. Patients without information on age or sex were excluded.

Measures

Stroke diagnosis was defined as any of the following *International classification of diseases 10th version* (ICD-10) codes in the main patient diagnosis: subarachnoid hemorrhage (SAH) (I60), intracerebral hemorrhage (ICH) (I61-I62), ischemic stroke (IS) (I63) and undetermined stroke (I64).¹⁴ Low socioeconomic status (SES) was obtained through the national health insurance assigned group, which categorizes individuals based on their income into four main types; low SES is assigned to those without income or with an income lower than the minimum country wage.¹⁵ Risk factors and comorbidities were identified in secondary diagnoses by ICD-10 and in-hospital procedures by ICD-9 codes. Most variables were analyzed at the patient level, except for the presence of a stroke unit which was analyzed at the hospital level.

The main outcomes were the sex differences in patient characteristics, care and in-hospital mortality, adjusted for age, SES, risk factors, stroke subtype, and clinical characteristics. In-hospital mortality was defined as death during hospitalization that was due to stroke as the main diagnosis, in all patients discharged in 2019.

Analysis

For bivariate analysis, categorical variables were analyzed using chi-squared independence test or Fisher's tests. Quantitative variables were analyzed using the Student's t test for normal distribution and Mann-Whitney U test for a non-normal distribution. Sequential multivariate logistic regression models were developed with adjustments for age and then for variables of clinical relevance, such as SES and presence of a unit stroke, and the results reported as odds ratios (OR) and 95% confidence intervals (CI). A significance level was defined as $P < 0.05$. All statistical analysis were performed using STATA version 17.0.

Results

Of 1,048,575 DRGs hospital discharges in Chile during 2019, there were 15,535 patients with main diagnosis of stroke. Of these, 366 had an undetermined primary diagnosis of stroke. (Table 1, Figure 1).

Women accounted for 45.54% (7,074/15,535) of stroke and they were older than men (70.4 ± 14.8 years versus 67.0 ± 13.5 years; $P < 0.001$). Table 1 outlines the other patient characteristics, stroke care and outcomes. After adjustment for age, women had lower SES (OR 1.92, 95%CI 1.77-2.08; $P < 0.001$), had more HT (1.10, 1.01-1.18; $P = 0.01$), obesity (1.64, 1.45-1.86; $P < 0.001$), and valvular heart diseases (1.28, 1.05-1.55; $P = 0.01$) than men (Table S2). Conversely, women were less often smokers (0.64, 0.57-0.71; $P < 0.001$) and with a history of ischemic heart disease (IHD) (0.53,

0.46-0.60; $P<0.001$) and they received less use of magnetic resonance imaging (MRI) (0.82 0.75-0.91; $P<0.001$). In-hospital complications by sex showed lower pneumonia (0.75, 0.68-0.83; $P<0.001$) and acute kidney injury (0.73, 0.62-0.85; $P<0.001$) for women than men (Table S2). Overall, 2,438 (15.69%) patients died during hospitalization.

Ischemic Stroke

Among 10,440 patients with IS, 5,781 were men (55.37%) who tended to be younger than women (67.9±12.6 years versus 71.6±14.2 years; $P<0.001$); Table 2 defines other characteristics and outcomes. After adjustment for age, women had lower SES (2.01, 1.81-2.22; $P<0.001$) and more risk factors of HT (1.16, 1.05-1.28; $P=0.002$), diabetes mellitus (DM) (1.09, 1.01-1.18; $P=0.02$), obesity (1.74, 1.49-2.02; $P<0.001$), valvular heart diseases (1.39, 1.12-1.71; $P=0.002$) and oral anticoagulant (OAC) use (1.18, 1.001-1.38; $P=0.03$). However, women had less IHD (0.56, 0.48-0.65; $P<0.001$) and current smoking (0.55, 0.49-0.63; $P<0.001$) than men (Figure 2). There were no significant sex differences in the duration of hospitalization ($P=0.12$), the availability of a stroke unit ($P=0.57$) or the use of reperfusion treatment, whether intravenous thrombolysis ($P=0.46$), thrombectomy ($P=0.91$) or craniectomy ($P=0.32$). Regarding imaging, although there was no sex-difference in the use of computerized tomography (CT) ($P=0.94$), women had less MRI (0.80, 0.72-0.89; $P<0.001$) than men. Regarding in-hospital complications, women had less pneumonia (0.66, 0.58-0.75; $P<0.001$) but more urinary tract infections (UTI) (2.35, 1.16-4.75; $P=0.01$) compared to men (Figure 2).

In-Hospital Mortality in Ischemic Stroke (I-HM_{IS})

There were 1,017 (9.74%) patients who died in hospital but there was no significant differences in the crude I-HM_{IS} between the sexes. However, after adjustment for age, women had a lower I-HM_{IS} than men (0.83, 0.72-0.95; $P=0.008$) (Figure 2) and this result remained significant in the fully adjusted model (0.80, 0.70-0.92; $P=0.002$) (Tables S3 and S4, Figure 3). Other variables independently associated with I-HM_{IS} were age (1.03, 1.03-1.04; $P<0.001$), CKD (1.48, 1.20-1.81; $P<0.001$), AF (1.56, 1.34-1.83; $P<0.001$), admission to a hospital without SU (1.21, 1.05-1.39; $P=0.003$), dyslipidemia (0.40, 0.31-0.53; $P<0.001$), current smoking (0.66, 0.51-0.86; $P=0.002$) and the presence of valvular heart disease (0.52, 0.33-0.80; $P=0.003$). Interestingly, being admitted to a hospital without stroke unit was especially relevant for men with IS (1.27, 1.05-1.54; $P=0.013$) but not women (Table S4). Other sex disaggregated predictors of I-HM_{IS} are outlined in Supplementary Table S4.

Women had lower risk of dying between only between the ages of 75 and 84 years in the fully adjusted analysis when compared to men (0.70 [CI, 0.56-0.89]; $P=0.004$) (Figure 3, Table S5).

Intracerebral hemorrhage (ICH)

Of 3,680 ICH patients, 2,112 were men (57.39%) who were younger than women (66.2±14.6 years versus 71.2±14.3 years); $P<0.001$) (Table 2). Adjustment for age showed that women had lower SES (2.03, 1.71-2.43; $P<0.001$) and more dyslipidemia (1.46, 1.16-1.84; $P<0.001$) but less current smoking (0.74, 0.57-0.96; $P=0.02$) and history of IHD (0.58, 0.41-0.80; $P=0.001$). Women also had less acute kidney injury (AKI) compared to men (0.71, 0.53-0.94; $P=0.01$) (Figure 2). There were no significant sex differences in the duration of hospitalization ($P=0.08$), the

availability of a stroke unit ($P=0.15$), the use of CT scan ($P=0.84$), and craniectomy ($P=0.08$).

In-hospital mortality in ICH (I-HM_{ICH})

There were 1,084 (29.46%) ICH patients who had an in-hospital death. Women had higher I-HM_{ICH} than men (32.1% versus 27.5%; age-adjusted OR 1.18, 95%CI 1.02-1.36 [$P=0.02$]) and fully-adjusted (OR 1.21, 1.04-1.41 [$P=0.01$]) (Table S3 and Table S6). Other independent predictors of I-HM_{ICH} were age (1.01, 1.00-1.01; $P<0.001$), CKD (1.54, 1.22-1.94; $P<0.001$), OAC use (2.01, 1.56-2.59; $P<0.001$), HT (0.72, 0.60-0.85; $P<0.001$), current smoking (0.63, 0.45-0.86; $P=0.004$) and dyslipidemia (0.49, 0.36-0.66; $P<0.001$). Unlike women, chronic kidney disease was associated to I-HM_{ICH} in men (1.99, 1.48-2.68, $P<0.001$). This and other sex-disaggregated predictors of I-HM_{ICH} are outlined in Tables S6 and Figure 4.

Women with ICH between the ages of 55-64 and 65-74 years had significantly higher I-HM_{ICH} than men (Figure 4, Table S5). In the fully adjusted model, the age range 55-74 years remains significant (1.42, 1.12-1.79; $P=0.003$).

Subarachnoid hemorrhage (SAH)

Of 1,049 patients hospitalized for SAH, 675 were women (64.35%); there was no age difference by sex (women 59.7 ± 15.4 years versus men 58.0 ± 16.2 years; $P=0.10$) (Table 2). After adjustment for age, women had more HT (1.43, 1.09-1.87; $P=0.01$), dyslipidemia (1.76, 1.03-3.01; $P=0.03$) and obesity (1.77, 1.08-2.89; $P=0.02$), but less IHD (0.30, 0.13-0.70; $P=0.005$) and OAC use (0.46, 0.23-0.91; $P=0.02$), than men. Women had more angiography (1.50, 1.15-1.95; $P=0.002$) and more aneurysm repair procedures than men (1.47, 1.12-1.92; $P=0.004$) (Figure 2). There were no significant

sex differences in the duration of hospitalization ($P=0.77$), the availability of a stroke unit ($P=0.60$) and in the use of CT scan ($P=0.21$).

In-hospital mortality in SAH ($I-HM_{SAH}$)

There were 290 (27.65%) patients who died of a SAH. For $I-HM_{SAH}$, there was no difference by sex (1.07, 0.80-1.42) even with adjustment for age (1.04, 0.78-1.39) (Figure 2). Independent predictors of $I-HM_{SAH}$ were age (1.01, 1.007-1.02; $P<0.001$) and admission to a hospital without a stroke unit (1.37, 1.04-1.82; $P=0.025$). In contrast to the factors for IS, lack of an in-hospital stroke unit was associated with $I-HM_{SAH}$ for women but not men (1.56, 1.10-2.20; $P=0.011$) (Table S7). Other sex disaggregated predictors of $I-HM_{SAH}$ can be found in Supplementary Table S7.

Discussion

In this study, which used national data for annual hospital discharges for stroke, we outline sex disaggregated data for sociodemographic, clinical characteristics and outcome. We show that sex influences $I-HM$ by stroke subtype, that is higher in men with IS and women with ICH.

The characteristics of our patients with acute stroke is generally consistent with other populations, in that women tend to be older, of lower SES, and have greater comorbidities of HT, AF, and obesity but less ischemic heart disease and smoking, than men.^{2,6,16–19} Although we were unable to account for baseline severity in our analysis, our observations align with other studies in showing a greater survival in women after IS.^{5,16,20–24} The reasons for this remain unexplained, but raise issues of sexual dimorphism in neuroanatomy or biology,²¹ unequal interaction of predictor variables,²³ and a survival advantage in relation to post-stroke infections.²⁴ A Japanese Stroke Registry of 19,956 IS patients showed that women had a lower-

case fatality among those who developed a post-stroke infection.²⁴ Our finding of impact of stroke unit care on short term mortality in men with IS could not be adequately explained on the basis of differential stroke severity. Further research is needed to understand underlying factors sex disparities on survival after IS.

For ICH, women were 21% more likely to die in hospital than men, and this could not be explained by age or baseline risk factors. Significantly, this distinction was noted during a productive phase of life, especially among individuals aged 55 and older. While conflicting results shown elsewhere^{6-8,17,25} may stem from differences in methodologies, there may also be sociocultural explanations.^{25,26} Women in our study were twice as likely to belong to a lower SES than men, and although this was controlled in the multivariable analysis, it is important to note that disadvantaged women are more susceptible to gender-based violence, social isolation, poor social support, and insufficient education than men.²⁷⁻³⁰ At the 479,054 participants of the UK biobank, social isolation but not loneliness was associated with higher risk of all-cause mortality.³¹ A national health survey 4,473 people in Chile showed poorer health-related quality of life reported in women than men.³² Thus, the social context of Chilean women may contribute to a higher probability of a severe presentation and worse outcome in stroke.

Furthermore, early mortality is inherently connected with the quality of hospital care,³³⁻³⁵ but the influence of sex-based bias in care is under-reported. In cardiovascular studies, men are often perceived as being physically stronger, leading healthcare providers to be more inclined to recommend and perform medical procedures for them than women.³⁶ There are few reports specifically in relation to the management of patients with acute ICH where a performance focus is on do not resuscitate (DNR) orders: results suggest higher use of DNR in women than men,³⁷

although such differences could relate to incomplete adjustment for confounding variables.³⁸ ICH patients with severe illness are unable to make critical end-of-life decisions. While we did not have access to the severity of the initial illness or data on various quality metrics, given the strong connection between in-hospital mortality and quality of care, it is plausible that the greater severity of ICH in women and the perception of them being more fragile might have influenced decisions. Unconscious gender-related biases may also have influenced the findings of fewer medical interventions in women, which potentially limited diagnostic and therapeutic efforts. The revealed trend of lower number of craniectomies in women compared to men, that was not significant after age adjustment, might be interesting to explore in a cohort with more surgeries in ICH. Further investigation into sex disparities in the intensity of care after acute ICH is clearly warranted.

Our study has several limitations. In particular, we lacked data on the time from the onset of symptoms to presentation, severity of the neurological deficit and the place of care, and other management that are associated with outcomes. There might have been miscoding errors and missing data that influenced the results. However, the large sample size, national representation,¹³ and non-differential bias in the data, still provides a reliable overview of sex disparities in the early outcome from acute stroke in Chile.

In summary, we have defined sex differences in the characteristics, management and early I-HM for patients with acute stroke in Chile. The impact of sex on I-HM across the subtypes of stroke may stem from differences in the social determinants of health and unconscious bias in the delivery of care. Further research is required to provide better granularity over factors contributing to sex differences in early stroke mortality.

Acknowledgment: None.

Sources of Funding: None.

Declaration of conflicting interests

CSA reports research grants from the National Health and Medical Research Council (NHMRC) of Australia, the Medical Research Council (MRC) of the UK, and Takeda and Penumbra. PMV receives research grants from ANID Fondecyt Regular 1221837, Pfizer and Boehringer Ingelheim. PML reports research support from Clínica Alemana de Santiago and Boehringer Ingelheim, research grants from The George Institute and Clínica Alemana de Santiago, ANID Fondecyt and FONIS. Speakers' honoraria from Boehringer Ingelheim and Pfizer. Steering Committee honoraria from Bristol-Meyes-Squibb and Janssen and consulting honoraria from RAPID. The other authors declare no conflict of interest.

References

1. Feigin VL, Stark BA, Johnson CO, et al. Global, regional, and national burden of stroke and its risk factors, 1990–2019: a systematic analysis for the Global Burden of Disease Study 2019. *Lancet Neurol* 2021; 20: 795–820.
2. Peters SAE, Carcel C, Millett ERC, et al. Sex differences in the association between major risk factors and the risk of stroke in the UK Biobank cohort study. *Neurology* 2020; 95: e2715–e2726.
3. Guo X, Xiong Y, Huang X, et al. Sex-based differences in long-term outcomes after stroke: a meta-analysis. *PLOS ONE* 2023; 18: e0283204.
4. Rexrode KM, Madsen TE, Yu AXY, et al. The impact of sex and gender on stroke. *Circ Res* 2022; 130: 512–528.
5. Bonkhoff AK, Karch A, Weber R, et al. Female stroke: sex differences in acute treatment and early outcomes of acute ischemic stroke. *Stroke* 2021; 52: 406–415.
6. James ML, Cox M, Xian Y, et al. Sex and age interactions and differences in outcomes after intracerebral hemorrhage. *J Womens Health* 2017; 26: 380–388.
7. Ganti L, Jain A, Yerragondur N, et al. Female gender remains an independent risk factor for poor outcome after acute nontraumatic intracerebral hemorrhage. *Neurol Res Int* 2013; 2013: 1–7.
8. Lu P, Cao Z, Gu H, et al. Association of sex and age with in-hospital mortality and complications of patients with intracerebral hemorrhage: a study from the Chinese Stroke Center Alliance. *Brain Behav* 2023; 13: e2846.

9. Von Elm E, Altman DG, Egger M, et al. The Strengthening the Reporting of Observational Studies in Epidemiology (STROBE) statement: guidelines for reporting observational studies. *Lancet* 2007; 370: 1453–1457.
10. Ministerios de Salud Chile. Datos abiertos FONASA. *Datos abiertos FONASA*, <https://www.fonasa.cl/sites/fonasa/datos-abiertos/bases-grd> (accessed 31 October 2023).
11. M. MZ. IMPORTANCIA DEL SISTEMA GRD PARA ALCANZAR LA EFICIENCIA HOSPITALARIA. *Rev Médica Clínica Las Condes* 2018; 29: 347–352.
12. Águila R A, Muñoz D MA, Sepúlveda S. V. Experiencia en el desarrollo e implementación de la metodología de grupos relacionados por diagnóstico en un hospital universitario chileno: evaluación a diez años de funcionamiento. *Rev Médica Chile* 2019; 147: 1518–1526.
13. Ministerio de Salud Chile, Fondo Nacional de Salud. Balance de Gestión Integral, https://www.dipres.gob.cl/597/articles-266871_doc_pdf.pdf (2020, accessed 31 October 2023).
14. World Health Organization (ed). *Clasificación estadística internacional de enfermedades y problemas relacionados con la salud*. Décima revisión. [10a rev.]. Washington, D.C: OPS, Oficina Sanitaria Panamericana, Oficina Regional de la Organización Mundial de la Salud, 1995.
15. Superintendencia de Salud, Ministerio de Salud Chile. ¿Cómo se clasifican los beneficiarios de Fonasa según su tramo? <https://www.supersalud.gob.cl/consultas/667/w3-article-6304.html>.
16. Renoux C, Coulombe J, Li L, et al. Confounding by pre-morbid functional status in studies of apparent sex differences in severity and outcome of stroke. *Stroke* 2017; 48: 2731–2738.

17. Abdel-Fattah A-R, Pana TA, Tiamkao S, et al. Différences sexuelles dans la mortalité par accident vasculaire cérébral en Thaïlande : une étude de cohorte nationale. *Ann Cardiol Angéiologie* 2023; 72: 1–7.
18. Yu AYZ, Austin PC, Rashid M, et al. Sex differences in intensity of care and outcomes after acute ischemic stroke across the age continuum. *Neurology* 2023; 100: e163–e171.
19. Arauz A, Serrano F, Ameriso SF, et al. Sex differences among participants in the Latin American Stroke Registry. *J Am Heart Assoc* 2020; 9: e013903.
20. Xu M, Amarilla Vallejo A, Cantalapiedra Calvete C, et al. Stroke outcomes in women: a population-based cohort study. *Stroke* 2022; 53: 3072–3081.
21. Dehlendorff C, Andersen KK, Olsen TS. Sex disparities in stroke: women have more severe strokes but better survival than men. *J Am Heart Assoc* 2015; 4: e001967.
22. Carcel C, Wang X, Sandset EC, et al. Sex differences in treatment and outcome after stroke: pooled analysis including 19,000 participants. *Neurology* 2019; 93: e2170–e2180.
23. Vaartjes I, Reitsma JB, Berger-van Sijl M, et al. Gender differences in mortality after hospital admission for stroke. *Cerebrovasc Dis* 2009; 28: 564–571.
24. Irie F, Matsuo R, Nakamura K, et al. Sex differences in the risk of 30-day death after acute ischemic stroke. *Neurol Clin Pract* 2021; 10.1212/CPJ.0000000000001087.
25. Craen A, Mangal R, Stead TG, et al. Gender differences in outcomes after non-traumatic intracerebral hemorrhage. *Cureus*. Epub ahead of print 1 October 2019. DOI: 10.7759/cureus.5818.

26. Fukuda-Doi M, Yamamoto H, Koga M, et al. Sex differences in blood pressure—lowering therapy and outcomes following intracerebral hemorrhage: results from ATACH-2. *Stroke* 2020; 51: 2282–2286.
27. OECD. *Education at a Glance 2021: OECD Indicators*. OECD. Epub ahead of print 16 September 2021. DOI: 10.1787/b35a14e5-en.
28. Naito R, Leong DP, Bangdiwala SI, et al. Impact of social isolation on mortality and morbidity in 20 high-income, middle-income and low-income countries in five continents. *BMJ Glob Health* 2021; 6: e004124.
29. Perera C, Bakrania S, Ipince A, et al. Impact of social protection on gender equality in low- and middle-income countries: a systematic review of reviews. *Campbell Syst Rev* 2022; 18: e1240.
30. Kim H, Grogan-Kaylor A, Han Y, et al. The association of neighborhood characteristics and domestic violence in Santiago, Chile. *J Urban Health* 2013; 90: 41–55.
31. Valtorta NK, Kanaan M, Gilbody S, et al. Loneliness and social isolation as risk factors for coronary heart disease and stroke: systematic review and meta-analysis of longitudinal observational studies. *Heart* 2016; 102: 1009–1016.
32. Socioeconomic status and perceived health-related quality of life in Chile. *MEDICC Rev* 2017; 19: 51.
33. Weimer JM, Nowacki AS, Frontera JA. Withdrawal of life-sustaining therapy in patients with intracranial hemorrhage: self-fulfilling prophecy or accurate prediction of outcome?*. *Crit Care Med* 2016; 44: 1161–1172.
34. Martinez J, Mouzinho M, Teles J, et al. Poor intensive stroke care is associated with short-term death after spontaneous intracerebral hemorrhage. *Clin Neurol Neurosurg* 2020; 191: 105696.

35. Zurasky JA, Aiyagari V, Zazulia AR, et al. Early mortality following spontaneous intracerebral hemorrhage. *Neurology* 2005; 64: 725–727.
36. Daugherty SL, Blair IV, Havranek EP, et al. Implicit Gender bias and the use of cardiovascular tests among cardiologists. *J Am Heart Assoc* 2017; 6: e006872.
37. Nakagawa K, Vento MA, Seto TB, et al. Sex differences in the use of early do-not-resuscitate orders after intracerebral hemorrhage. *Stroke* 2013; 44: 3229–3231.
38. Guha R, Boehme A, Demel SL, et al. Aggressiveness of care following intracerebral hemorrhage in women and men. *Neurology* 2017; 89: 349–354.

Table 1. Baseline characteristics of overall acute stroke patients by sex and multivariable analysis of characteristics associated to women compared to men

	Women n=7,074; 45.54%	Men n= 8,461; 54.46%	P Value
Baseline characteristics, n(%)			
Sociodemographic characteristics			
Age years, mean \pm SD	70.36 \pm 14.76	67.00 \pm 13.45	<0.001
Socioeconomic status ^a			<0.001
Low	5,783 (81.75)	5,801 (68.56)	
Middle	565 (7.99)	936 (11.06)	
High	572 (8.09)	1,404 (16.59)	
Risk factors			
Hypertension	5,477 (77.42)	6,241 (73.76)	<0.001
Diabetes mellitus	2,506 (35.43)	2,860 (33.80)	0.034
Dyslipidemia	863 (12.20)	995 (11.76)	0.400
Current smoking	653 (9.23)	1,248 (14.75)	<0.001
Chronic kidney disease	615 (8.69)	749 (8.85)	0.728
Obesity	617 (8.72)	512 (6.05)	<0.001
Heart diseases	1,818 (25.70)	2,051 (24.24)	0.036
Ischemic heart diseases	347 (4.91)	711 (8.40)	<0.001
Valvular heart disease	228 (3.22)	201 (2.38)	0.001
Atrial fibrillation	1,153 (16.30)	1,086 (12.84)	<0.001
Others	648 (9.16)	650 (7.68)	0.001
OACs	534 (7.55)	509 (6.02)	<0.001
Multimorbidity ^b	5,021 (70.98)	5,805 (68.61)	0.001
Stroke by subtype			
Ischemic stroke	4,659 (65.86)	5,781 (68.33)	0.001
Intracerebral hemorrhage	1,568 (22.17)	2,112 (24.96)	<0.001
Subarachnoid hemorrhage	675 (9.54)	374 (4.42)	<0.001
Undetermined	172 (2.43)	194 (2.29)	0.571
Hospitalization			
Hospitalization days, median (IQR)	8 (5-15)	8 (5-15)	0.945
Stroke care unit ^c	2,822 (39.89)	3,347 (39.56)	0.671
Mechanical ventilation	686 (9.70)	747 (8.83)	0.062
Readmission	224 (3.17)	297 (3.51)	0.236
Diagnostic test			
Brain CT	6,513 (92.07)	7,820 (92.42)	0.410
Brain MRI	824 (11.65)	1,229 (14.53)	<0.001
In-hospital complications^d			
Dysphagia	634 (8.96)	699 (8.26)	0.120
Pneumonia	825 (11.66)	1,151 (13.60)	<0.001
Pressure ulcers	288 (4.07)	271 (3.20)	0.004
ARDS	164 (2.32)	215 (2.54)	0.370
Urinary tract infection	34 (0.48)	23 (0.27)	0.032
Acute kidney injury	286 (4.04)	436 (5.15)	0.001
In-hospital mortality	1,172 (16.57)	1,266 (14.96)	0.006

Abbreviations: IQR=interquartile range; SD= standard deviation; OACs= direct oral anticoagulants; MRI= magnetic resonance imaging; CT= computed tomography; ARDS= acute respiratory distress syndrome.^aAmong those with National Healthcare insurance ^bTwo or more comorbidities. ^cMeasured at hospital level. ^dAt least one in-hospital complication. Bold denotes statistically significant results.

Table 2. Characteristics and outcome of acute stroke patients according to stroke subtype by sex

	Ischemic stroke			Intracerebral hemorrhage			Subarachnoid hemorrhage		
	Women n=4,659; 44.63%	Men n=5,781; 55.37%	P Value	Women n=1,568; 42.61%	Men n=2,112; 57.39%	P Value	Women n=675; 64.35%	Men n= 374; 35.65%	P Value
Baseline characteristics, n(%)									
Sociodemographic characteristics									
Age years, mean \pm SD	71.57 \pm 14.20	67.85 \pm 12.56	<0.001	71.20 \pm 14.30	66.17 \pm 14.56	<0.001	59.68 \pm 15.43	58.02 \pm 16.16	0.101
Low socioeconomic status ^a	3,854 (82.72)	3,963 (68.55)	<0.001	1,309 (83.48)	1,465 (69.37)	<0.001	476 (70.52)	240 (64.17)	0.035
Risk factors									
Hypertension	3,718 (79.80)	4,349 (75.23)	<0.001	1,218 (77.68)	1,568 (74.24)	0.016	414 (61.33)	194 (51.87)	0.003
Diabetes mellitus	1,824 (39.15)	2,138 (36.98)	0.023	498 (31.76)	585 (27.70)	0.008	117 (17.33)	74 (19.79)	0.324
Dyslipidemia	604 (12.96)	798 (13.80)	0.211	177 (11.29)	158 (7.48)	<0.001	60 (8.89)	19 (5.08)	0.025
Current smoking	441 (9.47)	990 (17.13)	<0.001	93 (5.93)	190 (9.00)	0.001	109 (16.15)	55 (14.71)	0.538
Chronic kidney disease	422 (9.06)	487 (8.42)	0.254	145 (9.25)	231 (10.94)	0.094	26 (3.85)	17 (4.55)	0.587
Obesity	417 (8.95)	346 (5.99)	<0.001	117 (7.46)	135 (6.39)	0.204	69 (10.22)	23 (6.15)	0.026
Heart diseases	1,416 (30.39)	1,601 (27.69)	0.002	303 (19.32)	370 (17.52)	0.161	48 (7.11)	43 (11.50)	0.016
Ischemic heart diseases	275 (5.90)	558 (9.65)	<0.001	59 (3.76)	121 (5.73)	0.006	9 (1.33)	15 (4.01)	0.005
Valvular heart disease	200 (4.29)	170 (2.94)	<0.001	16 (1.02)	28 (1.33)	0.399	6 (0.89)	2 (0.53)	0.528
Atrial fibrillation	886 (19.02)	833 (14.41)	<0.001	208 (13.27)	219 (10.37)	0.007	26 (3.85)	15 (4.01)	0.899
Others	514 (11.03)	522 (9.03)	0.001	97 (6.19)	103 (4.88)	0.083	15 (2.22)	17 (4.55)	0.036
OACs	359 (7.71)	340 (5.88)	<0.001	149 (9.50)	139 (6.58)	0.001	18 (2.67)	19 (5.08)	0.042
Multimorbidity ^b	3,523 (75.62)	4,198 (72.62)	0.001	1,022 (65.18)	1,309 (61.98)	0.046	358 (53.04)	184 (49.20)	0.233
Hospitalization									
Hospitalization days, median	8 (5-14)	8 (5-14)	0.297	8 (4-16)	8 (4-17)	0.038	15 (4-25)	14.5 (3-25)	0.506
IQR									
Stroke care unit ^c	1,845 (39.60)	2,286 (39.54)	0.952	561 (35.78)	820 (38.83)	0.059	365 (54.07)	198 (52.94)	0.725
Readmission	140 (3.00)	202 (3.49)	0.163	52 (3.32)	65 (3.08)	0.683	27 (4.00)	21 (5.61)	0.231
Diagnostic test									
Brain MRI	647 (13.89)	1,038 (17.96)	<0.001	108 (6.89)	141 (6.68)	0.800	53 (7.85)	33 (8.82)	0.583
Brain CT	4,350 (93.37)	5,392 (93.27)	0.844	1,438 (91.71)	1,940 (91.86)	0.872	586 (86.81)	334 (89.30)	0.240
Angiography	931 (19.98)	1,416 (24.49)	<0.001	180 (11.48)	232 (10.98)	0.638	320 (47.41)	144 (38.50)	0.005
Treatment									
Thrombolysis	320 (6.87)	397 (6.87)	0.998
Thrombectomy	58 (1.24)	75 (1.30)	0.812
Craniectomy	16 (0.34)	29 (0.50)	0.220	76 (4.85)	138 (6.53)	0.031
Aneurysm repair	296 (43.85)	135 (36.10)	0.014
Mechanical Ventilation ^d	131 (2.81)	209 (3.62)	0.021	279 (17.79)	401 (18.99)	0.356	274 (40.59)	130 (34.76)	0.063

< 96 hours	57 (1.22)	99 (1.71)	0.041	150 (9.57)	203 (9.61)	0.963	135 (20.00)	76 (20.32)	0.901
≥ 96 hours	73 (1.57)	110 (1.90)	0.194	126 (8.04)	199 (9.42)	0.143	137 (20.30)	54 (14.44)	0.019
In-hospital complication ^a	1,100 (23.61)	1,342 (23.21)	0.634	525 (33.48)	708 (33.52)	0.979	221 (32.74)	120 (32.09)	0.828
Dysphagia	457 (9.81)	503 (8.70)	0.051	140 (8.93)	175 (8.29)	0.491	30 (4.44)	18 (4.81)	0.784
Pneumonia	470 (10.09)	700 (12.11)	0.001	224 (15.56)	376 (17.80)	0.072	100 (14.81)	61 (16.31)	0.520
Pressure ulcers	181 (3.88)	177 (3.06)	0.022	78 (4.97)	77 (3.65)	0.047	23 (3.41)	14 (3.74)	0.778
ARDS	90 (1.93)	122 (2.11)	0.520	48 (3.06)	77 (3.65)	0.333	26 (3.85)	11 (2.94)	0.444
Urinary tract infections	24 (0.52)	12 (0.21)	0.008	7 (0.45)	10 (0.47)	0.905	2 (0.30)	1 (0.27)	0.933
Acute kidney Injury	185 (3.97)	266 (4.60)	0.115	79 (5.04)	153 (7.24)	0.006	15 (2.22)	10 (2.67)	0.646
In-hospital Mortality	454 (9.74)	563 (9.74)	0.992	504 (32.14)	580 (27.46)	0.002	190 (28.15)	100 (26.74)	0.625

Abbreviations: IQR=interquartile range; SD= standart deviation; OACs= oral anticoagulants; MRI= magnetic resonance imaging; CT= computed tomography; ARDS= acute respiratory distress syndrome. ^aAmong those with National Healthcare insurance ^bTwo or more comorbidities. ^cMeasured at hospital level. ^dNumbers may not add to 100% due to patients without hours of ventilation registered. ^eAt least one in-hospital complication. Bold denotes stadistically significant results.

389

390

391

392 Figure legends

393 Figure 1. Study set-up flowchart.

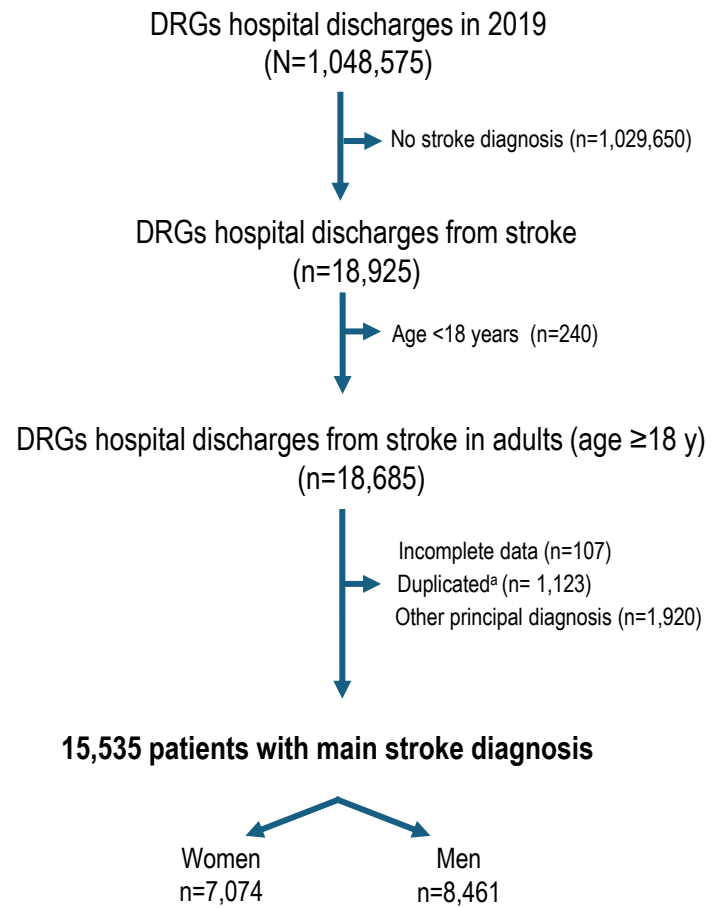
394 Figure 2. Age-adjusted odds ratio of baseline characteristics by stroke subtype in women compared to men.

395 Figure 3. Predictors of in-hospital mortality of ischemic stroke, by sex and age-group.

396 Figure 4. Predictors of in-hospital mortality for intracerebral hemorrhage, by sex and age-group.

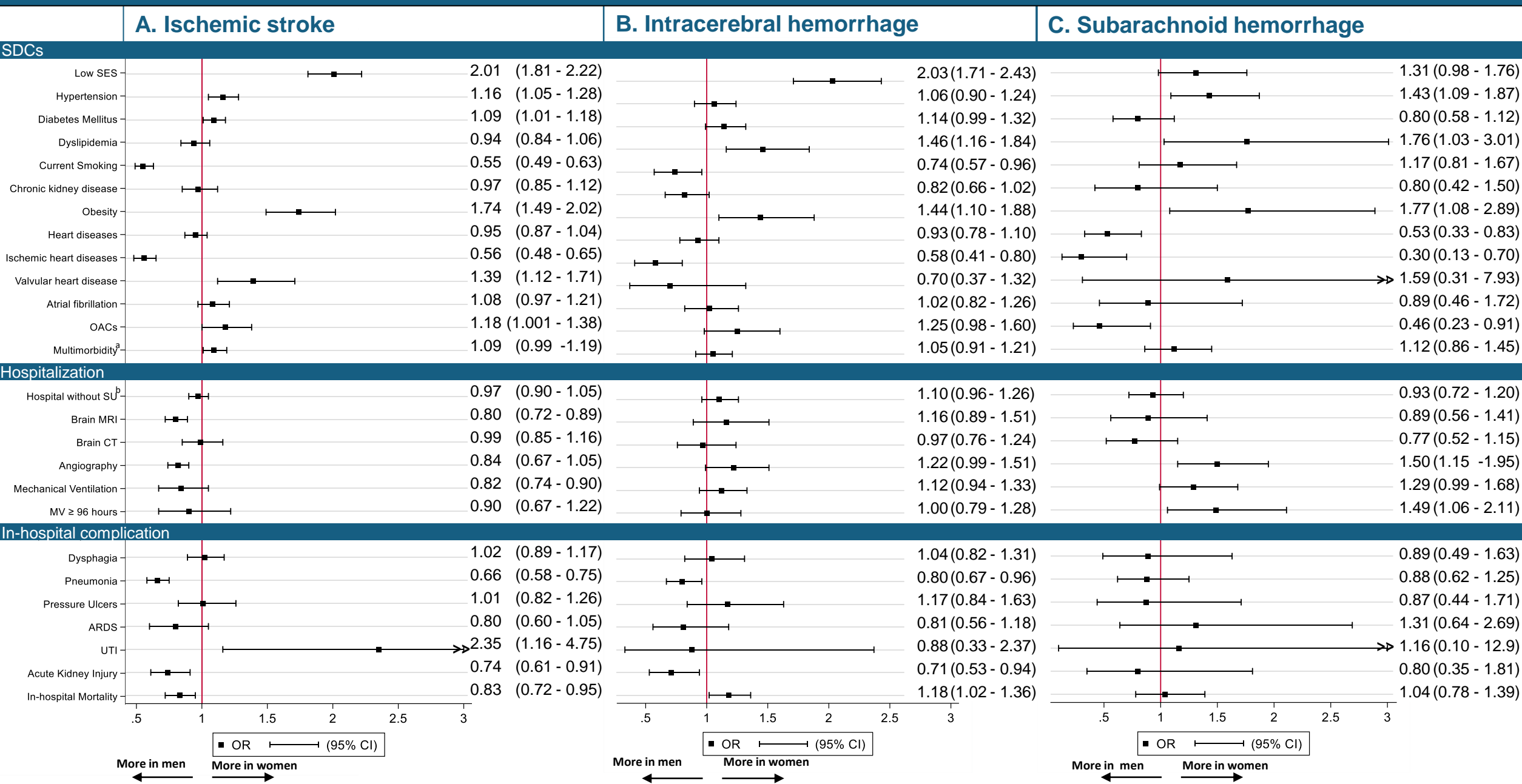
397

Figure. 1 Study set-up flowchart



Abbreviations: DRGs=diagnosis related groups database. ^aDuplicated data due to multiple hospital discharges by the same patient was re-enter as a readmission event.

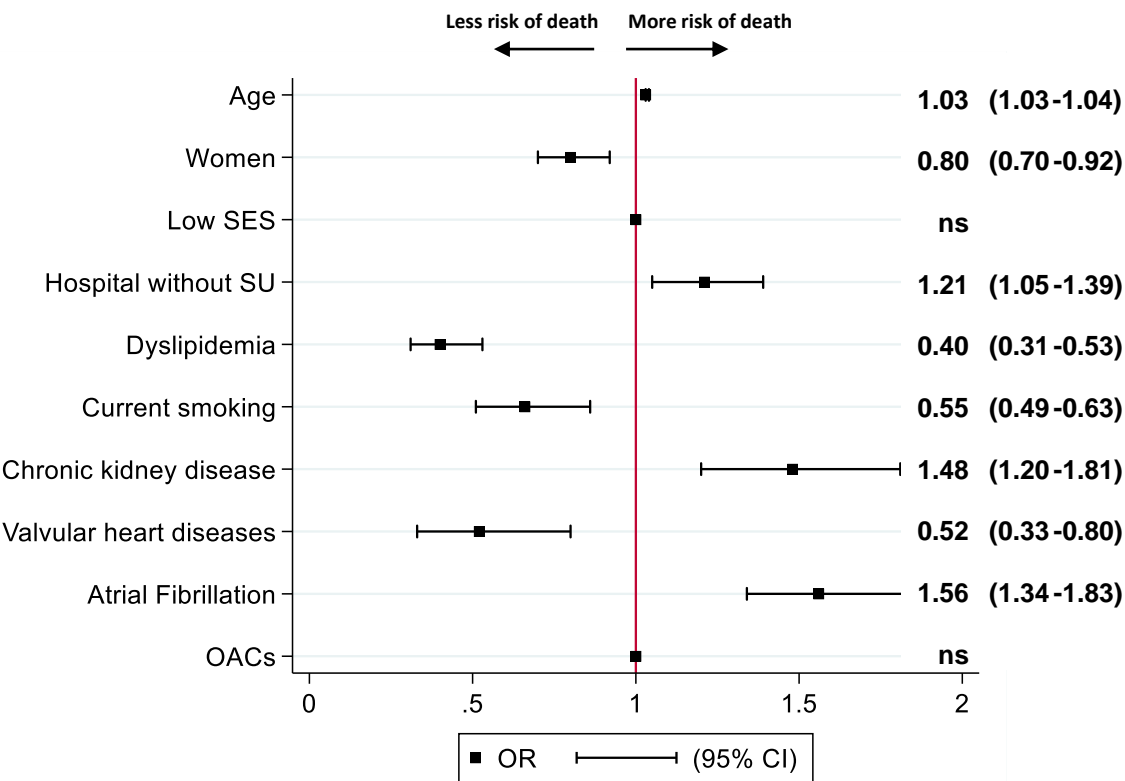
Figure 2. Age-adjusted odds ratio of baseline characteristics by stroke subtype in women compared to men.



Abbreviation: SDCs=sociodemographic characteristics; SES= socioeconomic status; OACs= oral anticoagulants; SU= stroke unit; MRI=magnetic resonance imaging; CT=computed tomography; MV=mechanical ventilation; ARDS=acute respiratory distress syndrome; UTI=urinary tract infection; OR=odds ratio; CI=confidence interval. ^aTwo or more comorbidities ^bMeasured at hospital level

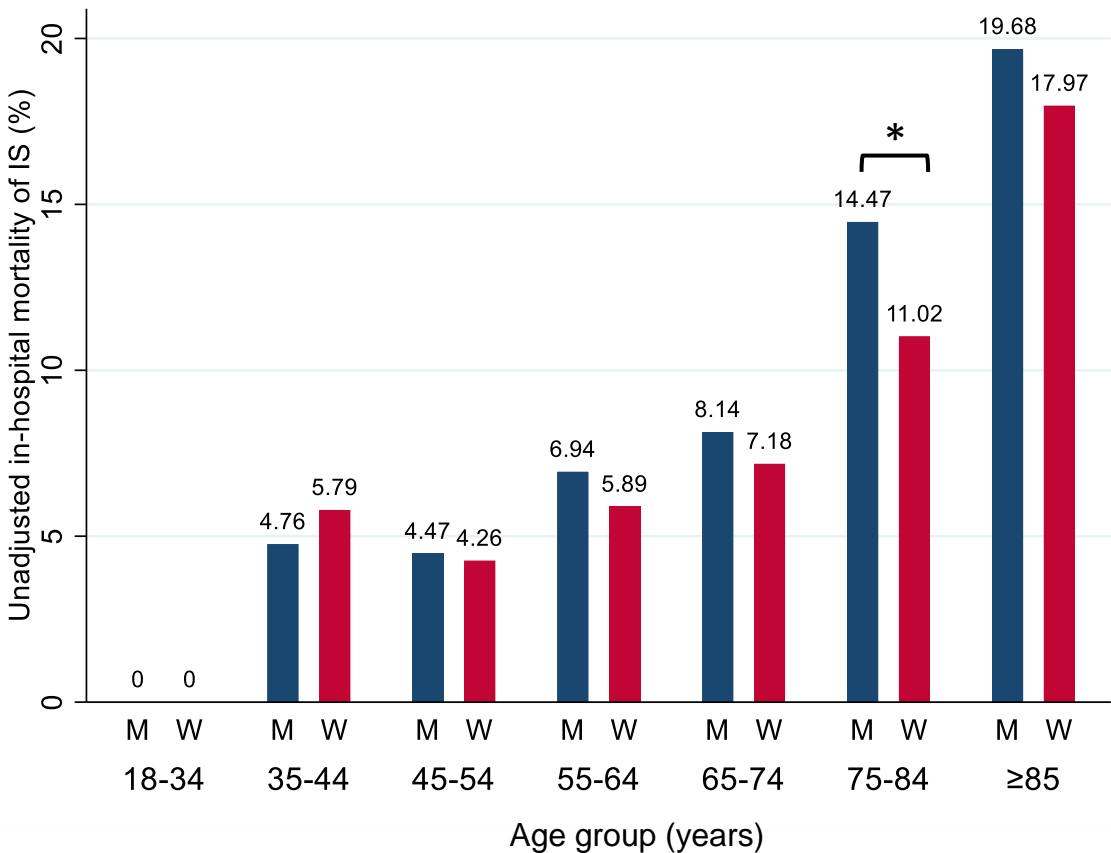
Figure 3. Predictors of in-hospital mortality of ischemic stroke, by sex and age-group

3.A. Independent predictors of I-HM_{IS}



Backward method multivariable analysis

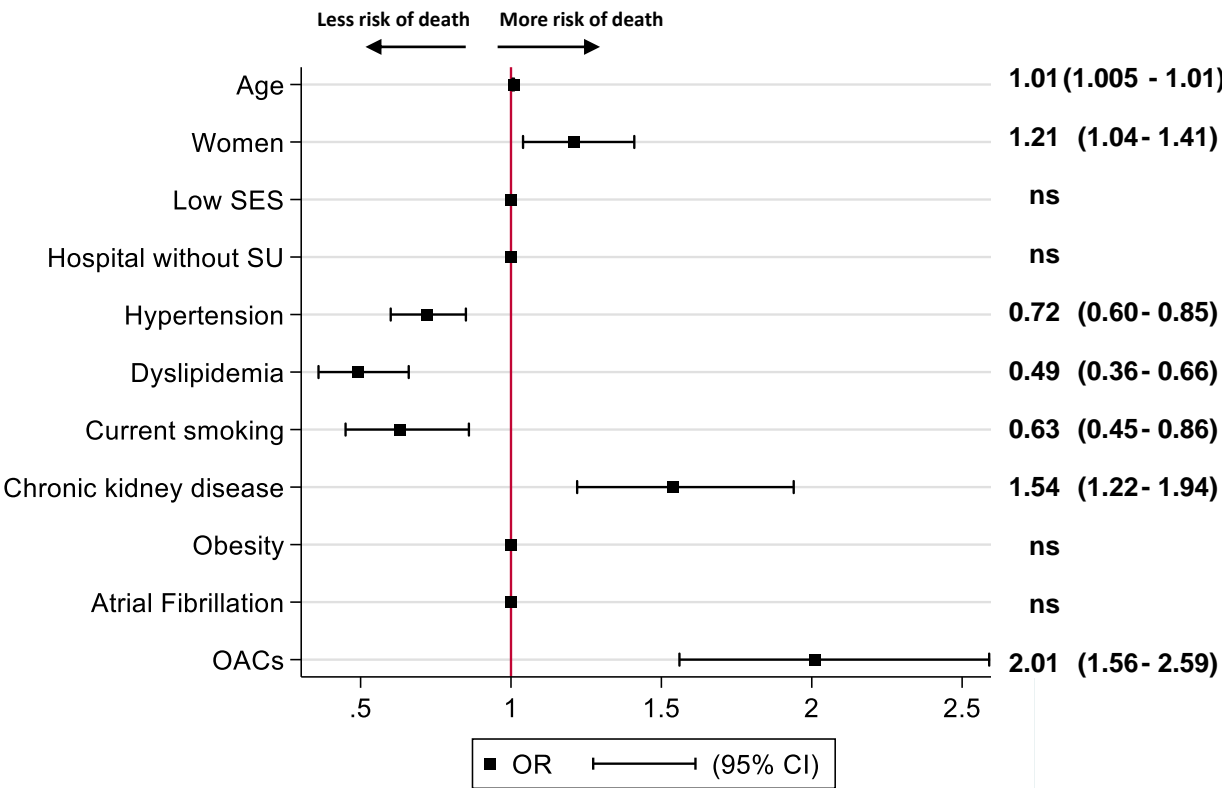
3.B. I-HM_{IS} by sex and age-group



Abbreviations: I-HM_{IS}= in-hospital mortality of ischemic stroke; SES= socioeconomic status; SU= stroke unit; OACs= oral anticoagulants; OR=odds ratio; CI= confidence Interval; ns= non-significance; M= men; W= women. **Figure 3.A:** Independent predictors of in-hospital mortality of Ischemic stroke. Adjusted for age, sex, low socioeconomic status, absence of stroke care unit and the risk factors with significant association in bivariate analysis. **Figure 3.B** In-hospital mortality of ischemic stroke disaggregated by sex and age group. (*): Statistically significant results (P<0.05).

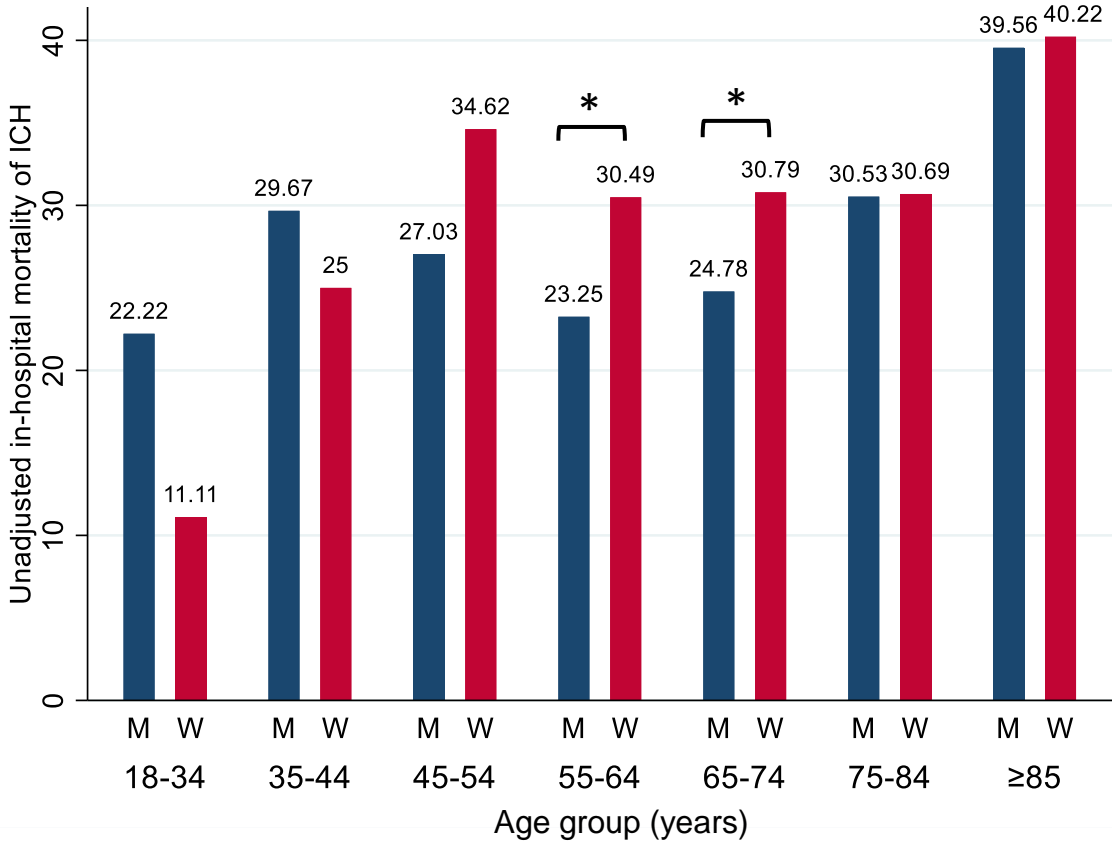
Figure 4. Predictors of in-hospital mortality for intracerebral hemorrhage, by sex and age-group

4.A Independent predictors of I-HM_{ICH}



Backward method multivariable analysis

4.B I-HM_{ICH} by sex and age-group



Abbreviations: I-HM_{ICH}= in-hospital mortality; SU= stroke unit; SES= socioeconomic status; OACs= oral anticoagulants; OR=odds ratio; CI= confidence interval; ns= non-significance; M= men; W= women. **Figure 4.A:** Independent predictors of in-hospital mortality of intracerebral hemorrhage. adjusted for age, sex, low socioeconomic status, absence of stroke care unit and the risk factors with significant association in bivariate analysis. **Figure 4.B** In-hospital mortality of intracerebral hemorrhage disaggregated by sex and age group. (*): Statistically significant results ($P<0.05$).