

Long-term survival, psychiatric, physiological, and functional outcomes of critically ill patients requiring prolonged mechanical ventilation: a systematic review.

Dr Jarryd Ludski^{1*} (BSc, MD) , Dr Conor Honeywill¹ (BPhyt(Hons), MD)

Author affiliations

¹School of Medicine Sydney, The University of Notre Dame Australia

***Corresponding Author**

Dr Jarryd Ludski

School of Medicine Sydney

The University of Notre Dame Australia

160 Oxford Street

Darlinghurst, New South Wales, 2010

Australia

Email: jarrydludski@gmail.com

ORCID: 0000-0001-8076-6804

Secondary Contact

Dr Conor Honeywill

Email: conor.honeywill@gmail.com

NOTE: This preprint reports new research that has not been certified by peer review and should not be used to guide clinical practice.

ABSTRACT

Purpose: Invasive mechanical ventilation is utilized in over 50% of Australian Intensive Care Unit patients, with rates increasing world-wide. Prolonged mechanical ventilation is associated with increased length of hospital stay and in-hospital mortality compared with patients ventilated under the time threshold. Previous studies have highlighted mortality rates, but much remains unknown regarding the long-term physiological, functional, and psychiatric effects of prolonged mechanical ventilation. With a greater understanding of these outcomes, models of care can be formulated to reduce long-term morbidity.

Methods: Medline, CINAHL and the Cochrane Library were searched between 1998 and March 2019, for PMV, patients in ICU and long-term outcomes. Included studies had patients, that received greater than or equal to 14 days of IMV. Primary outcome was mortality rates with secondary outcomes clustered into physiological, functional, and psychiatric outcomes.

Results: 1057 studies were identified, with 24 included. 73% of PMV patients were discharged from ICU, with mortality rates of 57% and 69% at 12 and 48 months. 30.2% were discharged home, 25% developed new onset ventilator acquired pneumonia and up to 39% experienced psychiatric complications.

Conclusion: Despite a high proportion of patients surviving to hospital discharge, subsequent outcomes are extremely poor for patients that require PMV.

KEY WORDS

- Mortality
- Ventilation, mechanical
- Critical illness
- Functional status
- Intensive care units
- Critical care

STATEMENTS AND DECLARATIONS

Ethics and Dissemination

This study did not involve human participants or unpublished secondary data. As such, approval from the Human Research Ethics Committee was not required

Patient and public involvement

This work analyses existing research studies, and therefore involves no patients or members of the public.

Consent for publication

Not applicable

Availability of data and materials

The datasets used and/or analysed during the current study are available from the corresponding author on reasonable request, with all original data available from sources referenced in **Appendix B**.

Declaration of competing interests

None

Funding

This research received no specific grant from any funding agency in the public, commercial or not-for-profit sectors

Author contributions

All authors (JL, CH) contributed meaningfully to the preparation, consultation, drafting, screening, extracting, and editing of this systematic review. JL (guarantor) conceived the idea and guided all stages of the research. JL (corresponding author) and CH conceptualized the research questions, core research plan details, and data extraction tool, before preparing the search strategy and undertaking this systematic review. All authors approved the final submitted manuscript after several iterations and rounds of editing and agreed to be accountable for all aspects of this protocol.

Acknowledgments

We would like to thank Dr. Sam Rudham for his assistance and guidance to both authors throughout the entire research processes, as well as assisting with .

Guarantor

Dr. Jarryd Ludski is the guarantor

BACKGROUND

Invasive mechanical ventilation (IMV) is used to generate a controlled flow of gas into a patient's airways, aiming to improve the ventilation-perfusion (V/Q) matching and reduce respiratory effort. It is recognized as one of the most common interventions in intensive care units (ICU), with a point prevalence of 58% of patients in Australian and New Zealand ICUs (Rose and Gerdtz 2009). Globally, epidemiological trends of the use of IMV have increased significantly since 1993 (Mehta et al. 2015), along with the incidence of prolonged mechanical ventilation (PMV). A study based in the United Kingdom reports IMV in 4.4 cases per 100 ICU admissions, with 6.3 cases per 100 ventilated ICU patients meeting criteria for PMV (Lone and Walsh 2011). Whilst the definition of PMV varies within the literature, a review looking at 419 studies identified greater than 14 days and 21 days as the most consistent definitions (Rose et al. 2017).

PMV is important to define, as those who receive the intervention have a significantly increased length of hospital stay and in-hospital mortality when compared to those who are mechanically ventilated under the time threshold (Lone and Walsh 2011). A meta-analysis which investigated prolonged mechanical ventilation, defined as greater than 14 days, found a pooled in-hospital mortality rate of 29%, with a direct one-year mortality rate of 59% (Damuth et al. 2015). Additionally, they demonstrated significant morbidity to the patient and burden on the healthcare system, with only 19% discharged home. Moreover, PMV is associated with high resource utilization, and greater costs to the healthcare system when compared to non-prolonged mechanically ventilated patients (Lone and Walsh 2011; Cox et al 2007).

Although long-term mortality has been investigated, little is known of the long-term physiological, functional, and psychiatric effects of PMV. It is described in the literature, that patients experiencing PMV are at risk of psychiatric morbidity and a decreased quality of life (Oeyen et al. 2010; Hung et al. 2010). Studies have also shown symptoms suggestive of post-traumatic stress disorder, anxiety and mood disorders following the intervention (Rose et al 2014).

Physiologically, PMV patients may be predisposed to developing, respiratory muscle weakness, low tidal volumes and a high respiratory rate (Purro et al. 2000; De Jonghe et al. 2007). Whilst the associated prolonged bed rest may result in peripheral muscle weakness or critical illness polyneuropathy (Zhou et al. 2014), leading to poorer physiological and functional outcomes (De Jonghe et al. 2007; Chen et al. 2012).

Questions regarding how these symptoms and effects change over time, whether resolving or worsening, remain unanswered. This population is already recognized to be at an increased risk of morbidity and mortality, however a greater understanding of the long-term outcomes is essential for the true impact of PMV to be assessed and mitigated.

Objectives of the study

We aim to highlight the prevalence and course of these outcomes following ICU discharge and into the future including survival rates and rates of physiological, functional, and psychiatric outcomes. Furthermore, we hope this understanding will help to guide appropriate follow-up care strategies to ameliorate these burdens. Post-ICU follow-up models have already demonstrated improvements in psychiatric and functional outcomes in patients¹⁴ however limited findings have been produced in the PMV population.

METHODS

Search strategy and selection criteria

Study protocol was written in accordance with Cochrane handbook guidelines and the Preferred Reporting Items for Systematic Reviews (PRISMA) statement. We searched MEDLINE, CINAHL and Cochrane databases for publications in the last 20 years, from 1998 to March 10 2019, with the following search terms and their related terms: “Intensive care unit”, “Prolonged mechanical ventilation” and “long-term outcome”. **Appendix A** displays the search design. No original language restrictions were set. Additional papers were added following reference tracking and search results

were merged using EndNote with duplicates removed. Studies were included if they were available in English and reported outcomes at greater than 3-months post discharge of patients over 18 years, admitted to an intensive care unit (ICU), coronary care unit (CCU) or equivalent who received 14 days or greater of mechanical ventilation. If a studies original design did not explicitly meet our inclusion criteria, but their final reported population and outcomes did, the study was included. We excluded studies where mechanical ventilation was resulting from solid organ transplantation or traumatic brain injury, given likely confounding of morbidity and mortality data. Correspondence, and editorials were excluded.

Data assessment and abstraction

The initial relevance screen of titles and abstracts was performed by two reviewers independently (JL, CH), with results categorised into irrelevant results and relevant results or not possible to determine. Exclusion logs were compared, and cases of disagreement were included. All studies categorised as relevant or not possible to determine underwent full manuscript review for eligibility within the study criteria by two reviewers independently (JL, CH), with any disagreement discussed with a third contributor (SR).

Data extraction

Using a standardised data collection form, two reviewers (JL, CH) extracted data for study design, population descriptors, length of mechanical ventilation, survival rates and physiological, function and psychiatric outcomes at all timepoints.

Outcomes

The primary outcome was post- discharge mortality at 3, 6, 12 and 24 months. Secondary outcomes were clustered to “Physiological”, “Functional” or “Psychiatric” outcomes reported at greater than 3 months post-hospital discharge. Physiological outcomes included development of sepsis, multi-system organ failure, Acute Respiratory Distress Syndrome (ARDS) and Ventilator acquired pneumonia (VAP). Functional outcomes included critical illness polyneuropathy and myopathy (CIPM), Quality

of life (QoL) to perform activities of daily living (ADLs), fragility index, exercise tolerance and pulmonary function tests. Psychiatric outcomes included Post-intensive care syndrome, Post-traumatic stress disorder (PTSD), delirium and cognitive impairments. Data was collaborated using pooled analysis.

RESULTS

1057 studies were identified with 85 passing a relevance screen and undergoing full manuscript review (see figure 1). 24 papers were included after meeting all inclusion and exclusion criteria. **Table 1** lists the reasons for exclusion. Of the 24 studies, 1 was a systematic review and 23 were cohort studies with 11 prospective and 12 retrospectives. Patient characteristics from the 24 included studies are highlighted in **Tables 2a and 2b**. The study population included 335,703 patients. Median reported age was 64 years, with a mean of 63.98 years (from 16 studies). 45.4% of patients were female.

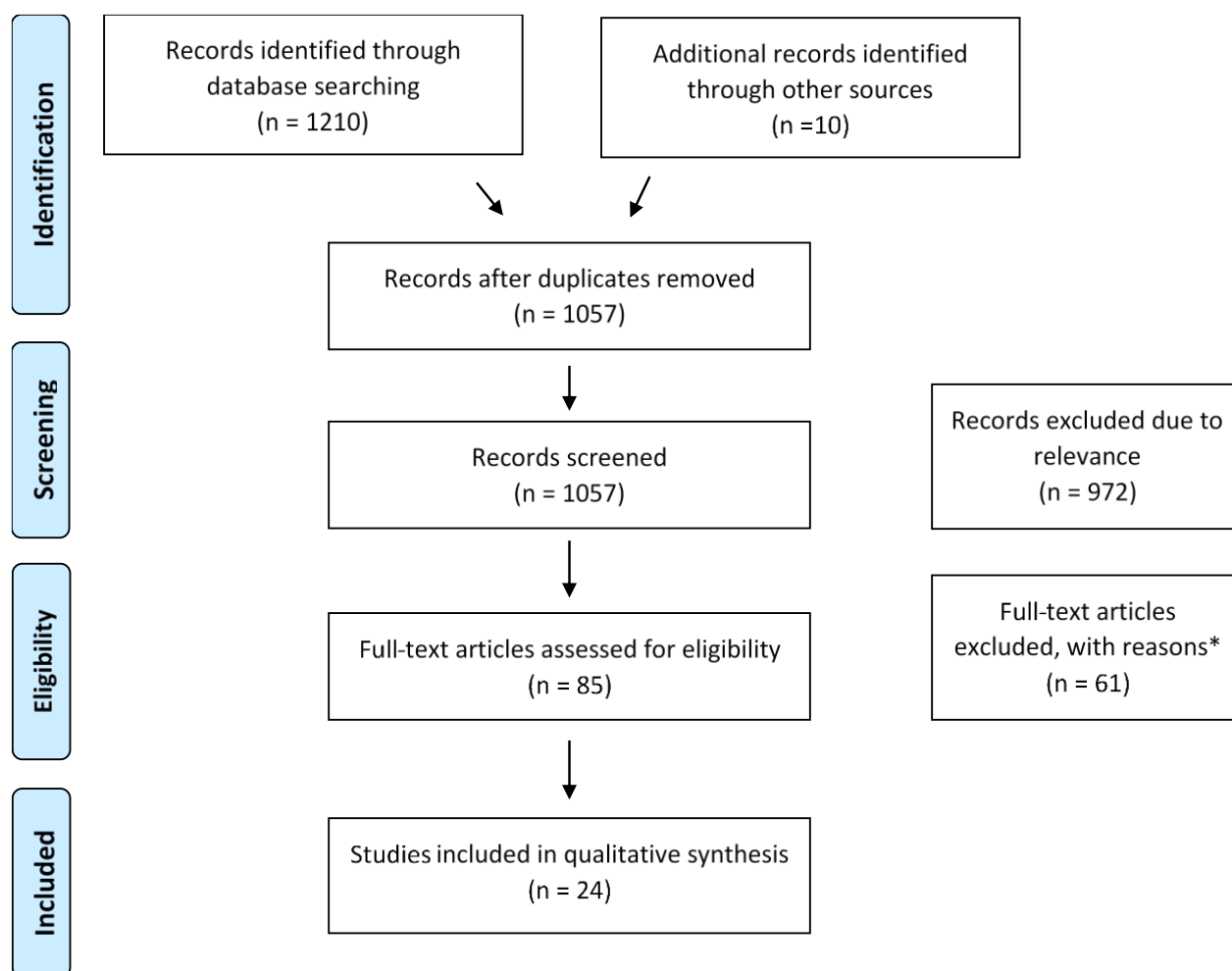


Figure 1 - Study flow chart
* reasons for exclusion outlined in Table 1

Reason for exclusion	Number of studies
Excluded via relevance screen	972
Excluded after full manuscript review	61
Did not meet criteria for prolonged mechanical ventilation	41
Outcomes not reported at greater than three months	3
MV result from organ transplant, traumatic brain injury or other excluded causes	3
A review, commentary, or narrative article	9
Review not published in English	2
Unable to access transcript	2
Patient population not appropriate due to age	1

Table 1 highlights reasons for exclusion

Median Reported Patient Characteristics			
		no. of patients	no. of studies
Age (years)	64 years	335,703	24
Female (%)	45.40%	324,058	22
APACHE Score	18	322,437	15

Table 2a - Data are median reported statistics. APACHE = Acute Physiology and Chronic Health Evaluation. Total study population = 335,703 patients from 24 included studies.

Pooled Mean Patient Characteristics			
		no. of patients	no. of studies
Age (years)	63.98 years	321,287	16
Female (%)	45.40%	324,058	22
APACHE Score	19.14	320,013	8

Table 2b - Data are reported means. APACHE = Acute Physiology and Chronic Health Evaluation. Total study population = 335,703 patients from 24 included studies.

Median Acute Physiology and Chronic Health Evaluation (APACHE) score was reported in 15 publications, calculated as 18, while a mean of 19.14 was calculated from 8 publications. 22 studies reported mortality outcomes, with an in-hospital mortality rate of 27% (from 17 studies, 334,524 patients) and rates of successful weaning from PMV equal to 57% of patients as reported in 10 studies.

Mortality outcomes were extracted, and pooled analysis used to account for varied study populations, with post-discharge mortality rates and total mortality rates reported at 3, 6, 12, 24, 36, 48, 60- and 120-months (outlined in **Table 3a and 3b**). Post-discharge mortality rates of 32% were reported at 12 months up to 70% at 60 months. Total mortality was more commonly reported than post-discharge mortality, with the 12-month timepoint being reported in 20 papers, including 335,456 patients. Total mortality was reported as 57% at 12 months, and 69% at the 48-months. Smaller study populations were reported at 3, 6, 24, 36, 60- and 120-month timepoints.

Months since discharge	Pooled Total Mortality Rate	n (patients)	Pooled Post-discharge Mortality Rate	n (patients)
Never discharged	27%	334,524		
3	33%	336	21%	283
6	13%	12,282	31%	194
12	57%	335,456	32%	2,341
24	25%	11,594	-	-
36	49%	842	-	-
48	69%	318,621	-	-
60	43%	12,109	70%	10
120	58%	11,631	-	-

Table 3a – shows pooled reported Total mortality rates and post-discharge mortality rates at intervals since discharge from ICU or equivalent. No studies reported post-discharge mortality rates at 24,36,48 or 120 months.

Publications that report mortality data																		
Publications	In-hospital mortality	Weaning	3 months		6 months		12 months		24 months		36 months		48 months		60 months		120 months	
			P-D	T.M	P-D	T.M	P-D	T.M	P-D	T.M	P-D	T.M	P-D	T.M	P-D	T.M	P-D	T.M
Anon, 1999	x						x	x							x	x		
Bigatello, 2007	x		x	x	x	x	x	x										
Carson, 2012	x						x	x										
Chatila, 2001		x																
Combes, 2003	x					x		x			x							
Damuth, 2015	x							x					x					
Davies, 2017	x	x						x			x					x		
Galiatsatos, 2017								x										
Hannan, 2013	x	x					x	x										
Hill, 2017	x					x		x		x						x		x
Hough, 2015	x						x	x										
Huang, 2017	x	x					x	x										
Kim, 2006		x				x												
Kluge, 2008	x				x	x	x	x										
Kobashi, 2003								x			x					x		x
Kojicic, 2011	x						x	x										
Ming-Shian, 2013								x										
Muzzafar, 2014	x	x					x	x										
Rose, 2012	x	x																
Scheinhorn, 2007	x	x					x	x										
Su, 2016	x	x						x										
Udeh, 2015								x										
Unroe, 2010	x	x	x	x			x	x										

Table 3b indicates studies that reported mortality outcomes at each timepoint. P.D = post-discharge rates. T.M = total

Functional data was reported in fifteen papers including discharge/subsequent location, return to work and quality of life ratings. **Table 4a and 4b** highlight results, included patients, and reported publications. The eventual discharge or subsequent location was reported in thirteen publications, with 30.2% of patients being discharged to home either independently or with assistance. Eleven publications reported that 25% of patients were discharged to an acute care facility or skilled nursing home, with eight studies reporting 20.2% of patients discharged to a rehabilitation facility. Functional capacity regarding returning to work was reported in one paper, with 43% of premorbid working patients left disabled and unable to return to work following PMV.

Characteristic	Proportion	Reported In: Studies (included patients)
Weaning from PMV		
Successful weaning	57%	10 (2,970)
Discharge		
Discharged from ICU or equivalent	73%	17 (334,524)
Discharge Location		
Home independently or with assistance	30.2%	13 (16,831)
Acute care facility, skilled nursing home	25%	11 (8,473)
Rehabilitation facility	20.2%	8 (8,293)
Functional capacity		
Pre- morbidly working, left disabled and unable to work	43%	1 (25)
Psychiatric		
Post-traumatic stress disorder (PTSD)	9%	1 (23)
Anxiety	39%	1 (23)
Depression	9%	1 (23)
Delirium	26%	1 (34)
Ventilator acquired pneumonia (VAP)		
New onset VAP	25.6%	3 (313 patients)

Table 4a highlights functional, psychiatric, and physiological outcomes from included studies.

Publications that report Functional Outcomes			
Publications	QoL	Discharge/Subsequent Location	Ability to work
Anon, 1999	x		
Bigatello, 2007	x	x	
Carson, 2012		x	
Chatila, 2001	x	x	x
Combes, 2003	x		
Damuth, 2015		x	
Davies, 2017		x	
Galiatsatos, 2017		x	
Hannan, 2013		x	
Hill, 2017		x	
Kim, 2006		x	
Kojicic, 2011		x	
Rose, 2012		x	
Scheinhorn, 2007	x	x	
Unroe, 2012	x	x	

Table 4b highlights studies that reported functional outcomes. QoL = quality of life

Quality of life was reported in 6 papers, using varying methods of assessment and at multiple differing timepoints. Objective measures such as ADLs, French Nottingham Health Profile, Zubrod score and Sickness Impact Profile (SIP) along with subjective measures of functional capacity were used. The French Nottingham Health profile completed 3 years after ICU discharge by 89 survivors reported decreased health-related quality of life across physical mobility, emotional reactions, pain, sleep, energy, and global score. The Zubrod score at discharge performed on 831 patients highlighted 69%

had poor functional status, while follow up at 12 months of 299 patients demonstrated that 40.1% of patients were still experiencing a poor functional status. A SIP score of ≥ 30 highlights severe function limitation, while a score of ≤ 5 is seen in healthy adults. 25 patients completed the questionnaire at a median time of 25 months post-ICU discharge, with a mean global SIP of 12 +/- 10, a physical score of 12 +/- 12 and psychosocial score of 9 +/- 11. The mean ADL score for a population of 210 patients was 54 +/- 21 and 64 +/- 22 at 3 and 6 months respectively post discharge, indicating a high level of assistance required. Subjective assessment looked at good, fair and poor outcomes, where a good outcome was a patient alive with no functional dependencies, a fair outcome was alive with some functional dependencies and a poor outcome was either alive with complete functional dependencies or dead. In one study with a population of 90 patients, outcomes were assessed at 3 and 12 months, with 37.5% (21% alive and 16.5% dead) having a poor outcome at 12 months, and only 18% of patients improving or sustaining a good outcome from their 3-month assessment. Moreover, in a small population of 5 survivors at 1 year post discharge from PMV, only 2 patients maintained their premorbid good functional level, while the remaining survivors demonstrated an absence of pain, but total disability, with a marked limitation defined as domiciliary confinement except for short, assisted walks.

Psychiatric outcomes were reported in two papers highlighted in Table 4c. PTSD was reported in 9% of patients, assessed using an Impact of events scale- revised score >33 (IES-R). Anxiety, as assessed by the Hospital Anxiety Depression scale (HADS) -anxiety > 11 was seen in 39% of patients, with those patients statistically more likely to have delusional memories of their experience ($p=0.008$). Depression was reported in 9% of patients as assessed by HADS-depression rating >11 .

Physiological outcomes were reported in three papers outlined in Table 4c. New onset delirium following successful weaning was reported in 26% of patients. While VAP, was reported in 33% of patients.

Publications reporting Psychiatric and Physiological Outcomes					
Publications	PTSD	Anxiety	Depression	Delirium	VAP
Huang, 2017					x
Kobashi, 2003					x
Muzzafar, 2014				x	x
Rose, 2014	x	x	x		

Table 4c highlights studies that reported psychiatric and physiological outcomes

DISCUSSION

As IMV continues to become a cornerstone of ICU intervention (Rose and Gerdtz 2009; Mehta et al. 2015; Lone and Walsh 2011; Damuth et al 2015; Zisk-Rony et al. 2019) especially in the age of Covid-19, an understanding of long-term patient outcomes from those that receive PMV has crucial implications on its use in patient management. Moreover, gaining a truer understanding of how these patients recover allows for targeted interventions to reduce ensuing morbidity and the burden placed on families, carers, and the healthcare system more broadly.

IMV of greater than 14 days was used to define PMV for several reasons. Firstly, a recent review of 124 studies (Damuth et al. 2015) used a similar definition. Secondly, clinical consensus of local intensive care specialists at a large Australian tertiary hospital where the authors were based concluded >14 days to be the most appropriate clinical definition. Finally, it was thought that defining PMV as >14 days, rather than any longer period would increase the number of included studies thus improving the accuracy of our findings. Our search was limited to publications within the last 20 years to reduce confounding of results from older studies prior to innovations in critical care practice that have improved survival (Dettmer et al. 2017).

With regard to survival rates, this review highlights that while most patients did survive to hospital ward discharge, a much smaller proportion, less than half, survived beyond 12 months of their discharge, and approximately two thirds were deceased by 48 months. These rates were slightly improved on previously published data which has reported mortality rates as high as 63% (Ming-Shian 2012) at 12 months, highlighting improvements in outcomes with continued utilization of IMV (Mehta

et al. 2015). Publication data as well as patient numbers were lacking over some of the other time points, for example only 2 publications reported survival rates at 3 months, and only 5 at 6 months, making it difficult to accurately assess and predict survival rates of patients undergoing PMV.

Functionally, in order for patients to return to their premorbid function, they must not only survive to ICU discharge but be successfully liberated from mechanical ventilation, with only just over half of the patients successfully weaned from PMV, it is not at all surprising that very few patients returned home or to their premorbid state.

Moreover, VAP, a major physiological burden was noted to occur in approximately one quarter of patients. VAP is a well recognised precipitate of chronic critical illness (CCI), a state in which patients are dependent on mechanical ventilation beyond 14 days but are neither improving nor imminently declining, leading to significant morbidity and mortality, including functional dependence, and psychological, cognitive and communication deficits (Meegan et al. 2018; Nelson et al. 2004). With 43% of patients failing to be successfully weaned, this systematic review provides further evidence to the considerable presence of CCI in PMV patients. With this understanding, it is clear why a large proportion of patients required extended, high-acuity care, often in long-term acute facilities, rehabilitation centers and hospices.

Finally, the psychiatric burden of undergoing PMV cannot be overlooked. With our results highlighting up to 39% of patients experiencing psychiatric symptoms and previous studies indicating it could be as high as 74% of patients (Cox et al. 2012), there is a necessity for further investigation, intervention, and follow-up psychiatric care strategies for PMV patients following possible extubation and discharge. Additionally, with QoL scores demonstrating a poor functional status in PMV post 6-12 months post discharge, further research, and consideration of outcomes following PMV must extend beyond merely survival and include the functional burden on life following PMV and hospital discharge.

Strengths & Limitations

This systematic review provides a broad understanding of the long-term effects of PMV beyond simply survival and demonstrates potentially significant burden to patients and their families. This review has the potential to better inform clinical decision making.

We acknowledge several limitations of our study. Patient-level data was not reported in included papers and therefore analysis could only be performed on mean or pooled data with specific co-morbidities or illness severities not accounted. Additionally, the heterogeneity of the data may lead to variations conclusions, which were minimised by stratifying outcomes, performing pooled analysis, and reporting both in-hospital and total mortality.

Limited data regarding psychiatric outcomes was available, with no objective measures of neurological functioning or cognition were identified. Functionally, with no universal measure of QoL, conclusions on level of morbidity were complicated. Furthermore, QoL reports were often reported at timepoints where large proportions of the patient population had died or may have been experiencing symptoms of the process of dying, potentially confounding results. Objective measures of functional capacity such as independence, fragility, pulmonary function, and exercise tolerance were limited or non-existent in our findings. No findings of CIPM, ARDS, sepsis or multisystem organ failure were reported. Finally, our review synthesized data from multivariable publications, meaning that while some endpoints have a large volume of included patients, others lead to conclusions that are not statistically significant. Finally, there was a delay in publishing of results from the initial completed search which may result in a primacy bias.

Future Directions

Despite attempting to answer crucial research questions on the psychiatric, functional, and physiological outcomes of critically ill patients requiring PMV, this systematic review highlights that much remains unknown. Future research is needed to truly understand the plight of these patients, specifically, objective measures of functional status, cognition, neurological status and QoL.

Additionally, longer term physiological assessments, from 12-months to 48-months, are indicated as survival rates continue to improve with innovations in critical care practice. These findings will inform the needs of the growing number of PMV patients following their discharge, ensuring appropriate follow-up care, and minimizing morbidity.

CONCLUSION

Outcomes are poor for critically ill patients requiring PMV in ICU, a quarter of patients will not survive to hospital discharge and fewer than half of the patients will survive beyond 12-months. Additionally, discharged patients suffer from psychiatric conditions, decreased functional ability and poor physiological outcomes, highlighting a need to extend the focus of care beyond merely hospital survival and successful weaning, to reducing long-term morbidity. Finally, as IMV continues to become a mainstay of ICU intervention, especially in the wake of COVID-19, this data and future research has extreme relevance to long-term public health and patient recovery.

LIST OF ABBREVIATIONS

- IMV – Invasive mechanical ventilation
- V/Q - ventilation-perfusion
- ICU - intensive care units
- PMV - Prolonged mechanical ventilation
- PRISMA - Preferred Reporting Items for Systematic Reviews
- CCU - coronary care unit
- ARDS - Acute Respiratory Distress Syndrome
- VAP - Ventilator acquired pneumonia
- CIPM - critical illness polyneuropathy and myopathy
- QoL - Quality of life
- ADLs - activities of daily living
- PTSD - Post-traumatic stress disorder
- APACHE - Acute Physiology and Chronic Health Evaluation
- SIP - Sickness Impact Profile
- IES-R - Impact of events scale- revised score
- HADS - Hospital Anxiety Depression scale
- CCI - chronic critical illness

REFERENCES

- Chen Y, Lin H, Hsiao H, Chou L, Kao K, Huang C, et al. Effects of Exercise Training on Pulmonary Mechanics and Functional Status in Patients With Prolonged Mechanical Ventilation. *Respiratory Care*. 2012;57(5):727-734. doi: 10.4187/respcare.01341
- Cox C, Carson S, Lindquist J, Olsen M, Govert J, Chelluri L. Differences in one-year health outcomes and resource utilization by definition of prolonged mechanical ventilation: a prospective cohort study. *Critical Care*. 2007;11(1):R9. doi: 10.1186/cc5667
- Cox C, Carson S. Medical and Economic Implications of Prolonged Mechanical Ventilation and Expedited Post-Acute Care. *Seminars In Respiratory And Critical Care Medicine*. 2012;33(04):357-361. doi: 10.1055/s-0032-1321985
- Damuth E, Mitchell J, Bartock J, Roberts B, Trzeciak S. Long-term survival of critically ill patients treated with prolonged mechanical ventilation: a systematic review and meta-analysis. *The Lancet Respiratory Medicine*. 2015;3(7):544-553. doi: 10.1016/s2213-2600(15)00150-2
- De Jonghe B, Bastuji-Garin S, Durand M, Malissin I, Rodrigues P, Cerf C, et al. Respiratory weakness is associated with limb weakness and delayed weaning in critical illness*. *Critical Care Medicine*. 2007;35(9):2007-2015. doi: 10.1097/01.ccm.0000281450.01881.d8
- Dettmer M, Damuth E, Zarbiv S, Mitchell J, Bartock J, Trzeciak S. Prognostic Factors for Long-Term Mortality in Critically Ill Patients Treated With Prolonged Mechanical Ventilation. *Critical Care Medicine*. 2017;45(1):69-74. doi: 10.1097/ccm.0000000000002022
- Hung M, Yan Y, Fan P, Lin M, Chen C, Kuo L, et al. Measurement of quality of life using EQ-5D in patients on prolonged mechanical ventilation: comparison of patients, family caregivers, and nurses. *Quality Of Life Research*. 2010;19(5):721-727. doi: 10.1007/s11136-010-9629-1

Lone N, Walsh T. Prolonged mechanical ventilation in critically ill patients: epidemiology, outcomes and modelling the potential cost consequences of establishing a regional weaning unit. *Critical Care*. 2011; 15(2):R102. doi: 10.1186/cc10117

Meegan A, Rosielle D. Chronic Critical Illness in Adults #343. *Journal Of Palliative Medicine*. 2018;21(1):99-100. doi: 10.1089/jpm.2017.0546

Mehta A, Syeda, S, Wiener R, Walkey A. Epidemiological trends in invasive mechanical ventilation in the United States: A population-based study *Journal Of Critical Care*. 2015; 30(6):1217-1221. doi: 10.1016/j.jcrc.2015.07.007

Ming-Shian L, Yan Y, Wang J, Lu H, Chen L, Hung M, et al. Improved Survival for an Integrated System of Reduced Intensive Respiratory Care for Patients Requiring Prolonged Mechanical Ventilation. *Respiratory Care*. 2012;58(3):517-24. doi: 10.4187/respcare.01530

Nelson J, Meier D, Litke A, Natale D, Siegel R, Morrison R. The symptom burden of chronic critical illness*. *Critical Care Medicine*. 2004;32(7):1527-1534. doi: 10.1097/01.ccm.0000129485.08835.5a

Oeyen S, Vandijck D, Benoit D, Annemans L, Decruyenaere J. Quality of life after intensive care: A systematic review of the literature. *Critical Care Medicine*. 2010;38(12):2386-2400. doi: 10.1097/ccm.0b013e3181f3dec5

Purro A, Appendini L, De Gaetano A, Gudjonsdottir M, Donner C, Rossi A. Physiologic Determinants of Ventilator Dependence in Long-term Mechanically Ventilated Patients. *American Journal Of Respiratory And Critical Care Medicine*. 2000;161(4):1115-1123. doi: 10.1164/ajrccm.161.4.9812160

Rosa R, Ferreira G, Viola T, Robinson C, Kochhann R, Berto P, et al. Effects of post-ICU follow-up on subject outcomes: A systematic review and meta-analysis. *Journal Of Critical Care*. 2019;52:115-125. doi: 10.1016/j.jcrc.2019.04.014

Rose L, Gerdzt M. Use of invasive mechanical ventilation in Australian emergency departments. *Emergency Medicine Australasia*. 2009; 21(2):108-116. doi: 10.1111/j.1742-6723.2009.01167.x

Rose L, McGinlay M, Amin R, Burns K, Connolly B, Hart N, et al. Variation in Definition of Prolonged Mechanical Ventilation. *Respiratory Care*. 2017;62(10):1324-1332. doi: 10.4187/respcare.05485

Rose L, Nonoyama M, Rezaie S, Fraser I. Psychological wellbeing, health related quality of life and memories of intensive care and a specialised weaning centre reported by survivors of prolonged mechanical ventilation. *Intensive And Critical Care Nursing*. 2014;(30):145-151. doi: 10.1016/j.iccn.2013.11.002

Zhou C, Wu L, Ni F, Ji W, Wu J, Zhang H. Critical illness polyneuropathy and myopathy: a systematic review. *Neural Regeneration Research*. 2014;9(1):101. doi: 10.4103/1673-5374.125337

Zisk-Rony R, Weissman C, Weiss Y. Mechanical ventilation patterns and trends over 20 years in an Israeli hospital system: policy ramifications. *Israel Journal Of Health Policy Research*. 2019;8(1). doi: 10.1186/s13584-019-0291-y

Appendix A: Search Design

Medline

1	Intensive Care Units/	48996
2	Critical Care/	48465
3	intensive care*.mp.	156157
4	critical care*.mp.	65057
5	intensive care unit*.mp.	130257
6	1 or 2 or 3 or 4 or 5	191268
7	Respiration, Artificial/	45902
8	prolonged mechanical vent*.mp.	1792
9	long term mechanical vent*.mp.	344
10	long-term mechanical vent*.mp.	344
11	7 or 8 or 9 or 10	46964
12	long term outcome*.mp.	48300
13	long-term outcome*.mp.	48300
14	SURVIVAL/ or SURVIVAL RATE/	164715
15	12 or 13 or 14	208850
16	6 and 11 and 15	668
17	limit 16 to yr="1998 -Current"	552

CINAHL

intensive care units or intensive care or intensive care unit or critical care or critical care unit or critical care units
AND
artificial respiration or prolonged mechanical vent* or long-term mechanical vent* or long term mechanical vent*
AND
long term outcome* or long-term outcome* or survival or survival rate
Limit: 1998-current
Total - 658

Appendix B: References of included publications

- Añón J, García de Lorenzo A, Zarazaga A, Gómez-Tello V, Garrido G. Mechanical ventilation of patients on long-term oxygen therapy with acute exacerbations of chronic obstructive pulmonary disease: prognosis and cost-utility analysis. *Intensive Care Medicine*. 1999;25(5):452-457. doi: 10.1007/s001340050879
- Bigatello L, Stelfox H, Berra L, Schmidt U, Gettings E. Outcome of patients undergoing prolonged mechanical ventilation after critical illness*. *Critical Care Medicine*. 2007;35(11):2491-2497. doi: 10.1097/01.ccm.0000287589.16724.b2
- Carson S, Kahn J, Hough C, Seeley E, White D, Douglas I, et al. A multicenter mortality prediction model for patients receiving prolonged mechanical ventilation*. *Critical Care Medicine*. 2012;40(4), 1171-1176. doi: 10.1097/ccm.0b013e3182387d43
- Chatila W, Kreimer D, Criner G. Quality of life in survivors of prolonged mechanical ventilatory support. *Critical Care Medicine*. 2001;29(4):737-742. doi: 10.1097/00003246-200104000-00007
- Combes A, Costa M, Trouillet J, Baudot J, Mokhtari M, Gibert C, Chastre J. Morbidity, mortality, and quality-of-life outcomes of patients requiring ≥ 14 days of mechanical ventilation. *Critical Care Medicine*. 2003;31(5):1373-1381. doi: 10.1097/01.ccm.0000065188.87029.c3
- Damuth E, Mitchell J, Bartock J, Roberts B, Trzeciak S. Long-term survival of critically ill patients treated with prolonged mechanical ventilation: a systematic review and meta-analysis. *The Lancet Respiratory Medicine*. 2015;3(7):544-553. doi: 10.1016/s2213-2600(15)00150-2
- Davies M, Quinnell T, Oscroft N, Clutterbuck S, Shneerson J, Smith I. Hospital outcomes and long-term survival after referral to a specialized weaning unit. *British Journal Of Anaesthesia*. 2017;118(4):563-569. doi: 10.1093/bja/aex031
- Galiatsatos P, Friedlander T, Dababneh D, Nelson K, Kelly D, Finucane T, et al. 1-Year Survival of Subjects Discharged From a Long-Term Chronic Ventilator Unit. *Respiratory Care*. 2017;62(10):1284-1290. doi: 10.4187/respcare.05419
- Hannan L, Tan S, Hopkinson K, Marchingo E, Rautela L, Detering K, et al. Inpatient and long-term outcomes of individuals admitted for weaning from mechanical ventilation at a specialized ventilation weaning unit. *Respirology*. 2013;18(1):154-160. doi: 10.1111/j.1440-1843.2012.02266.x

- Hill A, Fowler R, Burns K, Rose L, Pinto R, Scales D. Long-Term Outcomes and Health Care Utilization after Prolonged Mechanical Ventilation. *Annals Of The American Thoracic Society*. 2017;14(3):355-362. doi: 10.1513/annalsats.201610-792oc
- Hough C, Caldwell E, Cox C, Douglas I, Kahn J, White D, et al. Development and Validation of a Mortality Prediction Model for Patients Receiving 14 Days of Mechanical Ventilation. *Critical Care Medicine*. 2015;43(11):2339-2345. doi: 10.1097/ccm.0000000000001205
- Huang C, Lin, J, Ruan S, Chen C, Yu C. Preadmission tracheostomy is associated with better outcomes in patients with prolonged mechanical ventilation in the post intensive care respiratory care setting. *Journal Of The Formosan Medical Association*. 2017;116(3):169-176. doi: 10.1016/j.jfma.2016.05.005
- Kim Y, Hoffman L, Choi J, Miller T, Kobayashi K, Donahoe M. Characteristics associated with discharge to home following prolonged mechanical ventilation: A signal detection analysis. *Research In Nursing & Health*. 2006;29(6):510-520. doi: 10.1002/nur.20150
- Kluge S, Baumann H, Nierhaus A, Kröger N, Meyer A, Kreymann G. Safety of percutaneous dilational tracheostomy in hematopoietic stem cell transplantation recipients requiring long-term mechanical ventilation. *Journal Of Critical Care*. 2008;23(3):394-398. doi: 10.1016/j.jcrc.2007.05.001
- Kobashi Y, Matsushima T. Clinical Analysis of Patients Requiring Long-term Mechanical Ventilation of Over Three Months: Ventilator-associated Pneumonia as a Primary Complication. *Internal Medicine*. 2003;42(1):25-32. doi: 10.2169/internalmedicine.42.25
- Kojicic M, Li G, Ahmed A, Thakur L, Trillo-Alvarez C, Cartin-Ceba R, et al. Long-Term Survival in Patients With Tracheostomy and Prolonged Mechanical Ventilation in Olmsted County, Minnesota. *Respiratory Care*. 2011;56(11):1765-1770. doi: 10.4187/respcare.01096
- Ming-Shian L, Yan Y, Wang J, Lu H, Chen L, Hung M, et al. Improved Survival for an Integrated System of Reduced Intensive Respiratory Care for Patients Requiring Prolonged Mechanical Ventilation. *Respiratory Care*. 2012;58(3):517-24. doi: 10.4187/respcare.01530
- Muzaffar S, Gurjar M, Baronía A, Azim A, Mishra P, Poddar B, Singh R. Predictors and pattern of weaning and long-term outcome of patients with prolonged mechanical ventilation at an acute intensive care unit in North India. *Revista Brasileira De Terapia Intensiva*. 2017;29(1):23-33. doi: 10.5935/0103-507x.20170005

- Rose L, Fraser I. Patient Characteristics and Outcomes of a Provincial Prolonged-Ventilation Weaning Centre: A Retrospective Cohort Study. Canadian Respiratory Journal. 2012;19(3):216-220. doi: 10.1155/2012/358265
- Rose L, Nonoyama M, Rezaie, S, Fraser I. Psychological wellbeing, health related quality of life and memories of intensive care and a specialised weaning centre reported by survivors of prolonged mechanical ventilation. Intensive And Critical Care Nursing. 2014;30(3):145-151. doi: 10.1016/j.iccn.2013.11.002
- Scheinhorn D, Hassenpflug M, Votto J, Chao D, Epstein S, Doig G, et al. Post-ICU Mechanical Ventilation at 23 Long-term Care Hospitals. Chest. 2007;131(1):85-93. doi: 10.1378/chest.06-1081
- Su J, Lin C, Chen P, Lin F, Chen S, Kuo H. Experience with a step-down respiratory care center at a tertiary referral medical center in Taiwan. Journal Of Critical Care. 2006;21(2):156-161. doi: 10.1016/j.jcrc.2005.10.004
- Udeh C, Hadder B, Udeh B. Validation and Extension of the Prolonged Mechanical Ventilation Prognostic Model (ProVent) Score for Predicting 1-Year Mortality after Prolonged Mechanical Ventilation. Annals Of The American Thoracic Society. 2015;12(12):1845-1851. doi: 10.1513/annalsats.201504-200oc
- Unroe M.. One-Year Trajectories of Care and Resource Utilization for Recipients of Prolonged Mechanical Ventilation. Annals Of Internal Medicine. 2010;153(3):167. doi: 10.7326/0003-4819-153-3-201008030-00007