

# Title Page

## Full title

Association of Alcohol Intake with the Incidence of Atrial Fibrillation in Persons  $\geq 65$  Years Old in the Atherosclerosis Risk in Communities (ARIC) Cohort

## Authors' names, academic degrees, and affiliations

Louis Y Li, MPH<sup>1</sup>

Linzi Li, MPH, MSPH<sup>1</sup>

Lin Yee Chen, MD, MS<sup>2</sup>

Elsayed Z Soliman, MD, MS<sup>3</sup>

Alvaro Alonso, MD, PhD, MPH<sup>1</sup>

<sup>1</sup>Department of Epidemiology, Rollins School of Public Health, Emory University, Atlanta, GA 30322, USA.

<sup>2</sup>Lillehei Heart Institute and Department of Medicine (Cardiovascular Division), University of Minnesota Medical School, Minneapolis, MN 55455, USA.

<sup>3</sup>Epidemiological Cardiology Research Center, Section on Cardiovascular Medicine, Department of Medicine, Wake Forest School of Medicine, Winston-Salem, NC 27101, USA.

## Short title

Alcohol Intake and Incident AF in  $\geq 65$  in ARIC

## Name, email address, and complete address of corresponding author

Louis Li

[louis.li@emory.edu](mailto:louis.li@emory.edu)

1518 Clifton Rd NE

Atlanta, GA 30322

## Total word count of the manuscript (excluding supplementals)

Word count: 4,605

## Abstract

**Background:** The association of alcohol intake with incident atrial fibrillation (AF) remains controversial, particularly among older individuals at higher risk of AF. This study explores the association of alcohol intake with incident AF in persons  $\geq 65$  years old in the Atherosclerosis Risk in Communities (ARIC) cohort.

**Methods:** Data were obtained from ARIC, a community-based cohort aiming to identify risk factors for cardiovascular disease. Alcohol intake was assessed through interviewer-administered questionnaires. Incident AF was ascertained between the 2011-2013 visit and 2019. Participants were classified as current, former, or never drinkers. Former drinkers were further categorized on weekly alcohol consumption: light, moderate, heavy. Covariates included demographic characteristics, prevalent cardiovascular disease, and other risk factors. The association between drinking characteristics and incident AF was analyzed using Cox proportional hazard models.

**Results:** There were 5,131 participants with mean (SD) age 75.2 (5.0) years, 41% male, 23% Black, and 739 (14%) cases of incident AF. Current (HR 1.04, 95% CI 0.83-1.29) and former (HR 1.16, 95% CI 0.93-1.45) drinkers had a similar risk of incident AF compared to never drinkers. Incident AF was similar across categories of alcohol consumption in former drinkers (heavy drinkers [HR 1.14, 95% CI 0.84-1.55], moderate drinkers [HR 1.15, 95% CI 0.75-1.78] compared to light drinkers). Risk of AF did not differ per 5-year increase in years of abstinence (HR 1.00, 95% CI 0.96-1.03). There was an increase in the risk per 5-year increase in years of drinking (HR 1.07, 95% CI 0.96-1.19).

**Conclusion:** We did not find consistent evidence supporting an increased risk of AF associated with alcohol intake in persons aged 65 and older, highlighting the need to further explore this relationship in older populations.

## **Non-standard Abbreviations and Acronyms**

(in order of appearance)

AF – atrial fibrillation

ARIC – Atherosclerosis Risk in Communities

CHS – Cardiovascular Health Study

CAD – coronary artery disease

HF – heart failure

HTN – hypertension

BMI – body mass index

MI – myocardial infarction

PYs – person-years

FHS – Framingham Heart Study

# Introduction

Atrial fibrillation (AF) is the most common cardiac arrhythmia, and its incidence and prevalence continue to increase worldwide.<sup>1</sup> Alcohol intake has been proposed as a potential risk factor in AF incidence in both acute drinking settings and in long-term consumption.<sup>2-4</sup> From a pathophysiological perspective, acute alcohol consumption has direct effects on cellular, autonomic, and electrophysiological functions involved in arrhythmogenicity.<sup>5</sup> Long-term alcohol consumption has direct effects on left atrial substrate including left atrial remodeling, dilation, and fibrosis as well as indirect effects via interactions with other AF risk factors such as hypertension and cardiomyopathy.<sup>6</sup> Additionally, alcohol intake may affect the autonomic nervous system, and it has been proposed that modulation of vagal and parasympathetic mechanisms may be involved in the pathogenesis of AF.<sup>7</sup>

Previous literature on the association between alcohol intake and incident AF has been less definitive, especially in considering levels of alcohol consumption.<sup>8-10</sup> Furthermore, the association between previous alcohol consumption and incident AF such as in former drinkers has not been well-explored. In a previous analysis using data from the Atherosclerosis Risk in Communities (ARIC) study, Dixit et al.<sup>11</sup> addressed the association of alcohol intake and incident AF in persons aged 45-64 years old and concluded that, among former drinkers, the number of years of drinking and the amount of alcohol consumed were associated with increased risk of AF. Among former drinkers, they found that a longer duration of abstinence was associated with a decreased risk of AF. Furthermore, previous literature addressing alcohol intake and AF in elderly populations is limited. Mukamal et al.<sup>12</sup> studied older adults  $\geq 65$  years in the Cardiovascular Health Study (CHS) and concluded that current moderate alcohol

consumption was not associated with risk of incident AF and that former drinking was associated with higher risk of incident AF compared to never drinkers.

This study aims to further investigate the understudied population of patients  $\geq 65$  years, who are at increased risk of incident AF. Additionally, we hope to better characterize the relationship between more detailed characteristics of alcohol consumption among former drinkers including amount of alcohol consumed, number of years of abstinence, and number of years of drinking. We hypothesize that former drinkers and current drinkers will have a higher risk of incident AF than non-drinkers. We hypothesize that, within former drinkers, the number of years of abstinence will be associated with decreased risk of incident AF and that the number of years of drinking and amount of alcohol consumed will be associated with increased risk of incident AF.

## Methods

### Study population

The ARIC study is a community-based cohort study that has been ongoing since 1987 to identify risk factors for atherosclerosis and cardiovascular disease. The study recruited individuals aged 45-64 years from 4 field centers: Washington County, MD; Forsyth County, NC; Jackson, MS; and selected suburbs of Minneapolis, MN. In total, 15,792 participants were enrolled at Visit 1 between 1987-1989 which included examinations for medical, social, and demographic data. Participants underwent follow-up examination periodically at designated intervals and were surveilled for cardiovascular outcomes. Visit 5 examinations took place between 2011-2013 and involved 6,538 participants which served as the baseline for this study. Due to low sample sizes, two groups were excluded: (1) non-White and non-Black participants and (2) non-White participants from the Minneapolis and Washington County centers. Additional exclusion criteria included participants <65 years, missing information on alcohol consumption history at Visit 5, and prevalent AF. Prevalent AF was ascertained via ECGs performed at study visits and hospital discharge codes (ICD-9-CM: 427.3x; ICD-10-CM: I48.x) prior to Visit 5. Patients with missing covariates were also excluded, except for smoking status due to >10% of patients with missing smoking status. Statistical analysis was conducted for 5,131 participants that met study criteria.

### Assessment of incident atrial fibrillation

Incident AF was defined as any AF occurring after the participant's Visit 5 examination (2011-2013) and before December 31, 2019 for 3 centers (Washington County, Forsyth County, Minneapolis suburbs) and before December 31, 2017 for Jackson, MS. Incident AF was ascertained via hospital discharge codes (ICD-9-CM: 427.3x; ICD-10-CM: I48.x) not occurring

in the context of open cardiac surgery and from death certificates with AF as an underlying or contributing cause of death (ICD-10: I48).<sup>13</sup>

### Assessment of alcohol intake

Alcohol intake was assessed from the ARIC Smoking and Alcohol Use Form at Visit 5. Participants were asked the following: (1) if they had ever consumed alcoholic beverages, (2) if they presently drink alcoholic beverages, (3) approximately how many years ago they stopped drinking, and (4) how much and what type of alcohol they consumed daily and weekly. Participants were stratified according to their drinker status: current, former, and never drinker. For former drinkers, amount of alcohol consumed weekly, number of years of abstinence, and number of years of drinking were assessed at the participants' most recent visit for which data was available. Within former drinkers, amount of alcohol consumed weekly was calculated assuming the following alcohol content: 4oz wine (10.8g), 12oz beer (13.2g), 1.5oz hard liquor (15.1g).<sup>11,14</sup> Weekly alcohol consumption was stratified into 3 categories based on definitions provided by the CDC's National Center for Health Statistics:<sup>15</sup>

- Light drinker:  $\leq 3$  drinks per week
- Moderate drinker:  $> 3$  drinks but  $\leq 7$  drinks per week for women;  $> 3$  drinks but  $\leq 14$  drinks per week for men
- Heavy drinker:  $> 7$  drinks per week for women;  $> 14$  drinks per week for men

### Assessment of additional covariates

Age, sex, race, education level, prevalent cardiovascular disease [coronary artery disease (CAD), heart failure (HF), and stroke], hypertension (HTN), HDL-C, LDL-C, use of antihypertensive medications, use of anticoagulants, diabetes, smoking status, and body mass index (BMI) were considered as potential confounders. Sex, race, and education level were

obtained through self-report at Visit 1. Education level was stratified into 5 categories: high school or less, high school graduate, vocational school, college, and graduate/professional school.

Prevalent CAD, HF, stroke, hypertension, HDL-C, LDL-C, use of antihypertensive medications, use of anticoagulants, diabetes, smoking history, and BMI were assessed during Visit 5 examinations. Prevalent CAD was defined by myocardial infarction (MI) indicated on baseline ECG, self-reported MI, or cardiac procedure. Prevalent HF was determined by criteria from the ARIC heart failure research committee: any adjudicated HF event, any first position ICD-9 code of 428.x before 2005, any physician report of HF, two subsequent instances of self-reported HF or HF medication use, or an instance of self-reported HF or HF medication use with an elevated NT-proBNP value  $>125$  pg/mL from Visit 4 or Visit 5. Prevalent stroke was defined by self-report of stroke. Hypertension was defined as systolic blood pressure  $\geq 140$  mmHg, diastolic blood pressure  $\geq 90$  mmHg, or use of antihypertensive medications. HDL-C and LDL-C (mg/dL) were obtained from laboratory analytes. Use of antihypertensive medications and anticoagulants were obtained through self-report of use in the past 4 weeks. Diabetes was defined as fasting glucose  $\geq 126$  mg/dL, non-fasting glucose  $\geq 200$  mg/dL, current use of diabetes medication, or self-reported physician diagnosis of diabetes. Smoking status was stratified into 3 categories: current, former, and never smoker. BMI ( $\text{kg}/\text{m}^2$ ) was calculated from height and weight measurements.

### Statistical analysis

The association between drinker status and incident AF was analyzed using Cox proportional hazard models with adjustments for potential confounders. The proportional hazards assumption was assessed using Kaplan-Meier curves and log-minus-log survival plots for each



covariate. Within former drinkers, the associations between number of years of drinking, number of years of abstinence, and amount of alcohol consumed weekly and incident AF were analyzed using Cox proportional hazard models. The number of years of abstinence and years of drinking were analyzed as continuous variables. Additionally, for years of abstinence, participants were stratified into quartiles and 20-year intervals; for years of drinking, participants were stratified into quartiles and 10-year intervals. Statistical analysis was conducted in SAS software (Version 9.4; SAS Institute, Cary, NC, US).

## Results

### Demographic characteristics

There were 5,131 participants included in the analysis (Figure 1). The mean (SD) age of participants was 75.2 (5.0) years, 41% were male, and 23% were Black. Of the 5,131 participants, there were 2,544 (50%) current drinkers, 1,475 (29%) former drinkers, and 1,112 (22%) never drinkers. Proportion of males was higher in current and former drinkers compared to never drinkers (47%, 45%, 21%, respectively). Lastly, never drinkers were more frequently likely to be never smokers compared to current and former drinkers (67%, 32%, 32%, respectively).

### AF incidence

In total, 739 (14%) participants had incident AF: 377 (15%) current drinkers, 226 (15%) former drinkers, and 136 (12%) never drinkers. There was not a statistically significant difference in the risk of incident AF between categories (Figure 2). Participants were followed for a median time of 7.0 years. The overall incidence of AF was 23.2 cases per 1,000 person-years (PY): current drinkers (23.0 cases per 1,000 PYs), former drinkers (25.8 cases per 1,000 PYs), never drinkers (20.4 cases per 1,000 PYs).

### Drinker status

In unadjusted analyses, current drinkers had a higher risk of incident AF compared to never drinkers; however, the result was not statistically significant (HR 1.12, 95% CI 0.92-1.37). Former drinkers had a higher risk of incident AF compared to never drinkers (HR 1.27, 95% CI 1.02-1.57, p-value 0.03). After adjusting for covariates, the risk was attenuated in both current and former drinkers, and the hazard ratios were not statistically significant (HR 1.04, 95% CI 0.83-1.29; HR 1.16, 95% CI 0.93-1.45, respectively) (Table 2).

## Former drinkers

Within former drinkers, 1,431 out of 1,475 participants had data available on the number of drinks consumed weekly and were stratified into 3 categories: light, moderate, and heavy drinkers. There were 882 (62%) light drinkers, 163 (11%) moderate drinkers, and 386 (27%) heavy drinkers. There were 221 (15%) cases of incident AF: 128 (15%) occurring in light drinkers, 28 (17%) occurring in moderate drinkers, and 65 (17%) occurring in heavy drinkers. There was not a statistically significant difference in the risk of incident AF between categories (Figure 3). In unadjusted analyses, heavy and moderate drinkers had a higher risk of incident AF compared to light drinkers (HR 1.25, 95% CI 0.93-1.69; HR 1.22, 95% CI 0.81-1.83). In adjusted analyses, the comparisons were attenuated for both heavy (HR 1.14, 95% CI 0.84-1.55) and moderate (HR 1.15, 95% CI 0.75-1.78) drinkers (Table 3).

Incident AF in former drinkers was also analyzed on the number of years of abstinence and number of years of drinking for 1,393 and 676 participants, respectively, who had available data. The median (IQR) years of abstinence was 20 (30) years, the range was 0-74 years, and there were 214 (15%) cases of incident AF. The median (IQR) years of drinking was 10 (15) years, the range was 0-43 years, and there were 102 (15%) cases of incident AF. There was no difference in the risk of incident AF per 5 years of abstinence in unadjusted (HR 1.00, 95% CI 0.96-1.03) or adjusted (HR 0.98, 95% CI 0.94-1.01) analyses. There was a small increase in the risk of incident AF per 5 years of drinking in unadjusted (HR 1.10, 95% CI 0.99-1.22) that was attenuated in adjusted analysis (HR 1.07, 95% CI 0.96-1.19) (Table 4). In unadjusted and adjusted analyses by quartile and by 10-year and 20-year intervals did not yield statistically significant results for years of abstinence or years of drinking (Supplemental Tables 1-4).

## Discussion

In a community-based cohort study exploring the association between past alcohol intake and incident AF in elderly participants  $\geq 65$  years, the overall incidence of AF was 23.2 cases per 1,000 person-years, which is consistent with previous literature estimating the incidence in persons  $\geq 65$  years between 14.9-28.3 per 1,000 person-years.<sup>16-18</sup> Current drinkers had a 4% higher risk of incident AF compared to never drinkers and former drinkers had a 12% higher risk of incident AF compared to never drinkers in adjusted analysis; however, these results were not statistically significant. While we hypothesized that current drinkers to have a higher risk than former drinkers, a possible explanation could involve participants' reasons for quitting drinking such as underlying health conditions that may be associated with AF pathogenesis. Few studies have focused on this relationship in elderly populations, and the results have been inconclusive. In the Cardiovascular Health Study (CHS), Mukamal et al.<sup>12</sup> demonstrated that current moderate alcohol consumption was not associated with the risk of incident AF, but former drinkers were at higher risk than never drinkers. In an elderly Chinese population, Ye et al.<sup>19</sup> concluded that current drinkers were at higher risk than never drinkers in women only and not men. The results from this study show weak associations between drinker status and incident AF and do not support a strong effect of alcohol intake on AF risk in people aged 65 and older. The relationship likely remains multifaceted and complex, possibly depending on alcohol drinking patterns, prevalence of other risk factors, underlying risk of AF, and methodological aspects including methods to assess alcohol consumption and incident AF, thus requiring further investigation into the direct mechanisms of alcohol consumption on AF pathogenesis.

Within former drinkers, moderate drinkers had a higher risk of incident AF compared to light drinkers, heavy drinkers had a higher risk compared to light drinkers, and heavy drinkers

had a similar risk to moderate drinkers; however, these results were not statistically significant. Studies addressing more detailed amount of alcohol consumed suggest an association between increasing alcohol consumption and incident AF. In the Framingham Heart Study (FHS) with a cohort aged 28-62 years, there was little association between long-term moderate alcohol consumption and the risk of incident AF, but there was a significant association between heavy consumption and incident AF.<sup>3</sup> A separate study conducted in the FHS on a middle-aged population determined that that every 10 g per day of additional alcohol consumed was associated with a 5% higher risk of incident AF.<sup>6</sup> A previous analysis on the ARIC cohort addressed baseline alcohol intake and incident AF in a younger population aged 45-64 years. The results demonstrated that greater alcohol consumption was associated with an increased risk of incident AF in persons aged 45-64 years.<sup>11</sup> Previous literature suggests that heavy alcohol consumption may increase the risk of incident AF in younger populations; however, the findings from this study are not conclusive in supporting this hypothesis in elderly populations.

In this study focusing on persons  $\geq 65$  years, years of abstinence were not associated with an increased risk of incident AF. Each 5-year increase in years of drinking was associated with a 7% increased risk of incident AF; however, this association was not statistically significant. The previous ARIC analysis by Dixit et al.<sup>11</sup> demonstrated that a longer duration of alcohol abstinence among former drinkers was associated with a lower risk of incident AF and greater alcohol consumption was associated with a higher risk of incident AF in persons aged 45-64 years. The variable conclusions between this study and Dixit et al.<sup>11</sup> may suggest a fundamental difference between the study populations because of age. In the younger population, alcohol consumption may be a greater risk factor for incident AF; however, in elderly populations, alcohol consumption may not play as large of a role in the development of AF and may be

masked by other, more significant risk factors associated with aging. To better characterize these differences, future investigations may compare younger and older populations as well as identifying the specific pathophysiologic changes that occur in the context of alcohol consumption.

Strengths of this study include extensive follow-up time and the quality of assessments of alcohol intake and additional covariates. Furthermore, to our knowledge, this study is only the second U.S.-based investigation in an elderly population on the association between alcohol consumption and incident AF. There were several limitations in this study. First, assessments of alcohol intake were reliant on self-report data through questionnaires. Self-report of alcohol intake may introduce recall bias but has been previously identified as a reliable and valid approach, and careful attention was given to accurately represent the data.<sup>20,21</sup> Second, due to incident AF being ascertained from ICD codes, data on the severity and type of AF, such as paroxysmal vs. persistent vs. permanent AF was not captured, which may be an important distinction when considering the potential effects of alcohol consumption. Third, data was not collected on participants' reasons for quitting drinking as health concerns may potentially explain the increased risk of incident AF among former drinkers. Last, while efforts were made to adjust for measured confounders, residual confounding may lead to bias in the reported results.

Our findings suggest that the association between alcohol intake and incident AF may be less conclusive and more multifaceted in elderly populations than in the general population. Alcohol intake may play a less important role in the pathogenesis of AF in elderly populations and is worth further exploration. Future investigations in elderly populations should compare them to general and younger populations, identify other potential risk factors that occur during

the aging process that may be more involved in AF pathogenesis and may mask or supersede the effects of alcohol intake, and address concerns regarding the severity and type of AF patients may experience. As the global burden of AF continues to rise, better understandings of AF are a necessary and worthwhile endeavor, especially in elderly populations who are at greatest risk.

## **Acknowledgments, Sources of Funding, & Disclosures**

### Acknowledgments

The authors thank the staff and participants of the ARIC study for their important contributions.

### Sources of Funding

The Atherosclerosis Risk in Communities study has been funded in whole or in part with Federal funds from the National Heart, Lung, and Blood Institute, National Institutes of Health, Department of Health and Human Services, under Contract nos. (75N92022D00001, 75N92022D00002, 75N92022D00003, 75N92022D00004, 75N92022D00005).

### Disclosures

The authors report no conflicts of interest.

## **Supplemental Material**

Tables S1-S4



## References

1. Kornej J, Borschel CS, Benjamin EJ, Schnabel RB. Epidemiology of Atrial Fibrillation in the 21st Century: Novel Methods and New Insights. *Circ Res*. Jun 19 2020;127(1):4-20. doi:10.1161/CIRCRESAHA.120.316340
2. Marcus GM, Vittinghoff E, Whitman IR, et al. Acute Consumption of Alcohol and Discrete Atrial Fibrillation Events. *Ann Intern Med*. Nov 2021;174(11):1503-1509. doi:10.7326/M21-0228
3. Djousse L, Levy D, Benjamin EJ, et al. Long-term alcohol consumption and the risk of atrial fibrillation in the Framingham Study. *Am J Cardiol*. Mar 15 2004;93(6):710-3. doi:10.1016/j.amjcard.2003.12.004
4. Piano MR, Hwang CL. Holiday Heart Confirmed: Alcohol-Associated Atrial Fibrillation. *Ann Intern Med*. Nov 2021;174(11):1616-1617. doi:10.7326/M21-3193
5. Voskoboinik A, Prabhu S, Ling LH, Kalman JM, Kistler PM. Alcohol and Atrial Fibrillation: A Sobering Review. *J Am Coll Cardiol*. Dec 13 2016;68(23):2567-2576. doi:10.1016/j.jacc.2016.08.074
6. McManus DD, Yin X, Gladstone R, et al. Alcohol Consumption, Left Atrial Diameter, and Atrial Fibrillation. *J Am Heart Assoc*. Sep 14 2016;5(9):doi:10.1161/JAHA.116.004060
7. Kaul R, Kaul R, Paul P, Maksymiuk V, Frishman WH, Aronow WS. Alcohol and Atrial Fibrillation: A Pathophysiologic Perspective. *Cardiol Rev*. Oct 25 2022;doi:10.1097/CRD.0000000000000479
8. Liang Y, Mente A, Yusuf S, et al. Alcohol consumption and the risk of incident atrial fibrillation among people with cardiovascular disease. *CMAJ*. Nov 6 2012;184(16):E857-66. doi:10.1503/cmaj.120412
9. Yang L, Chen H, Shu T, Pan M, Huang W. Risk of incident atrial fibrillation with low-to-moderate alcohol consumption is associated with gender, region, alcohol category: a systematic review and meta-analysis. *Europace*. May 3 2022;24(5):729-746. doi:10.1093/europace/euab266
10. Gallagher C, Hendriks JML, Elliott AD, et al. Alcohol and incident atrial fibrillation - A systematic review and meta-analysis. *Int J Cardiol*. Nov 1 2017;246:46-52. doi:10.1016/j.ijcard.2017.05.133
11. Dixit S, Alonso A, Vittinghoff E, Soliman EZ, Chen LY, Marcus GM. Past alcohol consumption and incident atrial fibrillation: The Atherosclerosis Risk in Communities (ARIC) Study. *PLoS One*. 2017;12(10):e0185228. doi:10.1371/journal.pone.0185228
12. Mukamal KJ, Psaty BM, Rautaharju PM, et al. Alcohol consumption and risk and prognosis of atrial fibrillation among older adults: the Cardiovascular Health Study. *Am Heart J*. Feb 2007;153(2):260-6. doi:10.1016/j.ahj.2006.10.039
13. Alonso A, Agarwal SK, Soliman EZ, et al. Incidence of atrial fibrillation in whites and African-Americans: the Atherosclerosis Risk in Communities (ARIC) study. *Am Heart J*. Jul 2009;158(1):111-7. doi:10.1016/j.ahj.2009.05.010
14. Eigenbrodt ML, Mosley TH, Jr., Hutchinson RG, Watson RL, Chambless LE, Szklo M. Alcohol consumption with age: a cross-sectional and longitudinal study of the Atherosclerosis Risk in Communities (ARIC) study, 1987-1995. *Am J Epidemiol*. Jun 1 2001;153(11):1102-11. doi:10.1093/aje/153.11.1102
15. NHIS - Adult Alcohol Use - Glossary. CDC.
16. Piccini JP, Hammill BG, Sinner MF, et al. Incidence and prevalence of atrial fibrillation and associated mortality among Medicare beneficiaries, 1993-2007. *Circ Cardiovasc Qual Outcomes*. Jan 2012;5(1):85-93. doi:10.1161/CIRCOUTCOMES.111.962688
17. Zathar Z, Karunatileke A, Fawzy AM, Lip GYH. Atrial Fibrillation in Older People: Concepts and Controversies. *Front Med (Lausanne)*. 2019;6:175. doi:10.3389/fmed.2019.00175
18. Lernfelt G, Mandalenakis Z, Hornestam B, et al. Atrial fibrillation in the elderly general population: a 30-year follow-up from 70 to 100 years of age. *Scand Cardiovasc J*. Aug 2020;54(4):232-238. doi:10.1080/14017431.2020.1729399
19. Ye XF, Zhang W, Chen Y, et al. Alcohol consumption in relation to the incidence of atrial fibrillation in an elderly Chinese population. *J Geriatr Cardiol*. Jan 28 2022;19(1):52-60. doi:10.11909/j.issn.1671-5411.2022.01.005
20. Giovannucci E, Colditz G, Stampfer MJ, et al. The assessment of alcohol consumption by a simple self-administered questionnaire. *Am J Epidemiol*. Apr 15 1991;133(8):810-7. doi:10.1093/oxfordjournals.aje.a115960
21. Del Boca FK, Darkes J. The validity of self-reports of alcohol consumption: state of the science and challenges for research. *Addiction*. Dec 2003;98 Suppl 2:1-12. doi:10.1046/j.1359-6357.2003.00586.x

## Tables

**Table 1.** Demographic characteristics (n=5,131)

Characteristic	Current Drinkers (n=2,544)	Former Drinkers (n=1,475)	Never Drinkers (n=1,112)
Mean age, years (SD)	74.9 (4.9)	75.4 (5.1)	75.8 (5.2)
Male, n (%)	1202 (47)	657 (45)	239 (21)
Race, n (%)			
White	2315 (91)	942 (64)	672 (60)
Black	229 (9)	533 (36)	440 (40)
Education level, n (%)			
High school or less	136 (5)	312 (21)	246 (22)
High school graduate	764 (30)	511 (35)	424 (38)
Vocational school	236 (9)	118 (8)	87 (8)
College	986 (39)	369 (25)	225 (20)
Graduate/professional school	422 (17)	165 (11)	130 (12)
Median drinks per week, n	2	1	-
Mean BMI, kg/m <sup>2</sup> (SD)	27.9 (5.0)	29.4 (5.9)	29.3 (6.5)
Coronary artery disease, n (%)	335 (13)	222 (15)	110 (10)
Heart failure, n (%)	176 (7)	218 (15)	148 (13)
Stroke, n (%)	57 (2.2)	64 (4.3)	36 (3.2)
Hypertension, n (%)	1783 (70)	1151 (78)	862 (78)
Diabetes mellitus, n (%)	638 (25)	573 (39)	393 (35)
HDL-C, mg/dL (SD)	53.9 (14.5)	49.7 (13.0)	53.0 (13.1)
LDL-C, mg/dL (SD)	105.4 (34.3)	102.2 (34.1)	108.9 (36.0)
Antihypertensive use, n (%)	1559 (61)	1058 (72)	806 (72)
Anticoagulant use, n (%)	73 (2.9)	48 (3.3)	37 (3.3)
Smoking status, n (%)			
Current smoker	177 (7.0)	98 (6.6)	27 (2.4)
Former smoker	1406 (55)	809 (55)	250 (22)
Never smoker	821 (32)	467 (32)	744 (67)
Unknown/missing	140 (5.5)	101 (6.9)	91 (8.2)

**Table 2.** Risk of incident atrial fibrillation by drinker status (n=5,131)

	AF Cases	Incidence Rate (per 1,000 PYs)	Unadjusted Hazard Ratio	95% Confidence Interval	p-value	Adjusted Hazard Ratio*	95% Confidence Interval	p-value
<b>Never</b>	136 (12%)	20.4	1 (Ref.)			1 (Ref.)		
<b>Current</b>	377 (15%)	23.0	1.12	0.92-1.37	0.25	1.04	0.83-1.29	0.75
<b>Former</b>	226 (15%)	25.8	1.27	1.02-1.57	0.03	1.16	0.93-1.45	0.20

\*Adjusted for age, sex, race, education level, prevalent cardiovascular disease [coronary artery disease (CAD), heart failure (HF), and stroke], hypertension (HTN), HDL-C, LDL-C, use of antihypertensive medications, use of anticoagulants, diabetes, smoking status, and body mass index (BMI).

**Table 3.** Risk of incident atrial fibrillation by weekly alcohol consumption in former drinkers (n=1,431)

	AF Cases	Incidence Rate (per 1,000 PYs)	Unadjusted Hazard Ratio	95% Confidence Interval	p-value	Adjusted Hazard Ratio*	95% Confidence Interval	p-value
<b>Light</b>	128 (15%)	23.9	1 (Ref.)			1 (Ref.)		
<b>Moderate</b>	28 (17%)	28.0	1.22	0.81-1.83	0.35	1.15	0.75-1.78	0.53
<b>Heavy</b>	65 (17%)	29.4	1.25	0.93-1.69	0.14	1.14	0.84-1.55	0.41

\*Adjusted for age, sex, race, education level, prevalent cardiovascular disease [coronary artery disease (CAD), heart failure (HF), and stroke], hypertension (HTN), HDL-C, LDL-C, use of antihypertensive medications, use of anticoagulants, diabetes, smoking status, and body mass index (BMI).

**Table 4.** Risk of incident atrial fibrillation by years of abstinence and years of drinking in former drinkers (n=1,393; n=676)

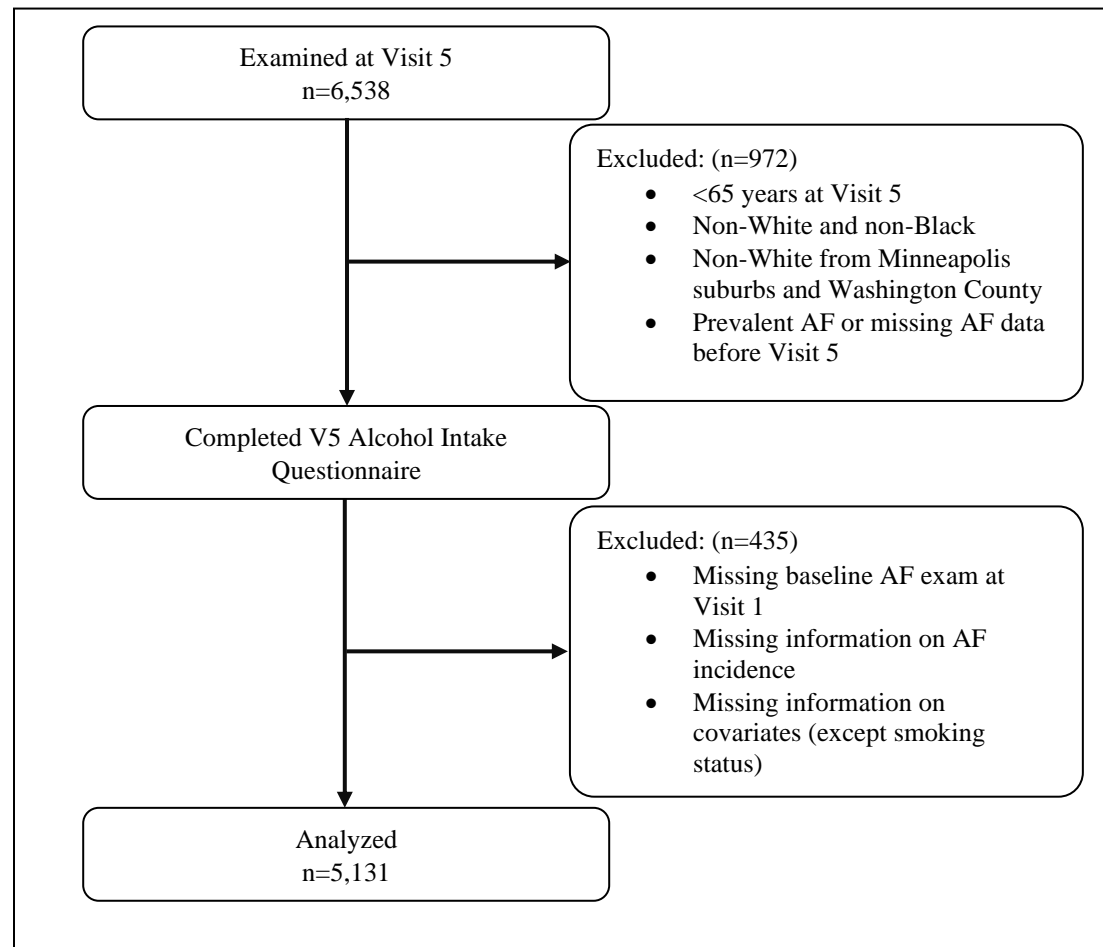
	Unadjusted Hazard Ratio	95% Confidence Interval	p-value	Adjusted Hazard Ratio*	95% Confidence Interval	p-value
<b>Years of abstinence</b>	1.00†	0.96-1.03	0.84	0.98†	0.94-1.01	0.22
<b>Years of drinking</b>	1.10†	0.99-1.22	0.07	1.07†	0.96-1.19	0.24

\*Adjusted for age, sex, race, education level, prevalent cardiovascular disease [coronary artery disease (CAD), heart failure (HF), and stroke], hypertension (HTN), HDL-C, LDL-C, use of antihypertensive medications, use of anticoagulants, diabetes, smoking status, and body mass index (BMI).

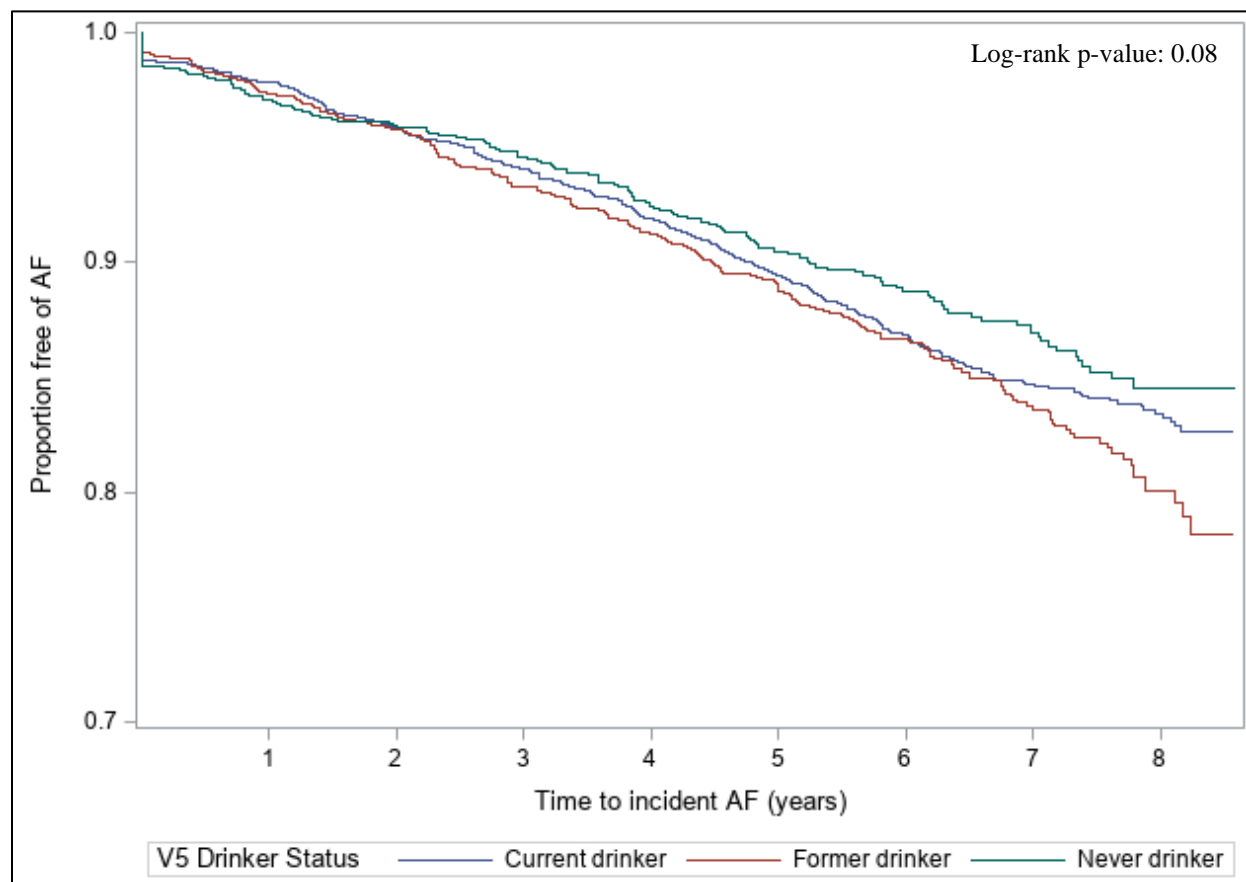
†Hazard ratio per 5 years.

## Figures

**Figure 1.** Study population flowchart



**Figure 2.** Kaplan-Meier curves for incident atrial fibrillation by drinker status



**Figure 3.** Kaplan-Meier curves for incident atrial fibrillation by weekly alcohol consumption in former drinkers

