

1 The impact of complement factor H-related protein gene deletions on kidney 2 transplantation

3 Running title: CFHR deletions in kidney transplantation

4 Markkinen Salla^{1†}, Lokki A. Inkeri^{2,3†}, Helanterä Ilkka⁴, Ritari Jarmo¹, Partanen Jukka¹, Meri
5 Seppo^{2,5}, Hyvärinen Kati^{1*}

6 ¹Research and Development, Finnish Red Cross Blood Service, Helsinki Finland

7 ²Translational Immunology Research Program and Department of Bacteriology and Immunology,
8 Faculty of Medicine, University of Helsinki, Helsinki, Finland

9 ³Heart and Lung Center, Helsinki University Hospital and University of Helsinki, Helsinki, Finland

10 ⁴Transplantation and Liver Surgery, Helsinki University Hospital and University of Helsinki, Helsinki,
11 Finland

12 ⁵Diagnostic Center, Helsinki University Hospital, Helsinki, Finland

13

14 † These authors contributed equally to this work

15

16

17 Keywords: Complement factor H-related, CFHR, kidney transplantation, gene deletion,
18 allograft rejection

19 Number of words: 3884

20 *Corresponding author

21 Kati Hyvärinen, PhD, Associate professor

22 Finnish Red Cross, Blood Service

23 Research and Development

24 Biomedicum Helsinki 1, Haartmaninkatu 8

25 00290 Helsinki, FINLAND

26 Phone +358 40 920 3083

27 kati.hyvarinen@helsinki.fi

28

29 ABSTRACT

30 We recently reported that a homozygous deletion in the complement factor H-related
 31 (*CFHR*) locus predisposed kidney transplant patients to rejection. As donors carried intact
 32 genes, the susceptibility may have resulted from alloimmune reaction to FHR proteins.
 33 However, we found no evidence for anti-FH response. It is therefore possible that *CFHR*
 34 deletions as such affect the rejection risk. Here, we used MLPA and WGS to fine-map and
 35 sequence the *CFHR* region in rs7542235-GG patients, a SNP tagging for $\Delta CFHR3\text{--}1$ deletion.
 36 Our results confirmed that all patients with this SNP harboured deletions of various sizes
 37 encompassing *CFHR1*. Furthermore, patients with homozygous $\Delta CFHR3\text{--}1$ were
 38 homozygous for rs6677604-A, a SNP tagging for deletions of *CFHR3\text{--}1* locus, confirming that
 39 allele A tags for deletion of both *CFHR3* and *CFHR1*. Proteomics analyses in a larger
 40 population demonstrated that rs7542235-G and rs6677604-A associate with expression
 41 levels of several proteins involved in regulating alloimmune response. We observed that
 42 while increasing the rejection risk, the $\Delta CFHR3\text{--}1$ did not associate to baseline disease or
 43 specific clinical characteristics. To conclude, the various deletion types found in patients
 44 shared the deletion of *CFHR1* gene confirming its association to variant rs7542235. Also,
 45 both deletion-tagging alleles are associated with altered expression of FHR proteins.

46 INTRODUCTION

47 Prior matching of human leukocyte antigen (HLA), ABO blood group types, and a negative
48 anti-HLA cross-matching are the golden rule in kidney transplantation. Regardless, some of
49 the patients still experience complications after kidney transplantation. In search of novel
50 histocompatibility factors, a study by Steers *et al.*(1) reported that a homozygous gene
51 deletion of *LIMS1*, and our previous study (2) reported that homozygous deletion in the
52 complement factor H-related (*CFHR*) locus consisting of *CFHR3* and *CFHR1* genes were
53 associated with acute rejection of the graft.

54 There are a few mutually non-exclusive mechanistic explanations to these findings. The
55 rejection may be related to alloimmune response by the patient against the protein missing
56 from the patient but expressed by the graft, hence, as such not necessarily linked to the
57 function of the protein. Alternatively, the rejection risk may be related to the function of the
58 protein missing from the patient. The functional effect can be direct, i.e., a result of the
59 missing protein, or caused by expression of the missing protein by the transplanted kidney,
60 or it can be related to complex downstream networks. A deletion of a gene and adjacent
61 DNA segments may furthermore lead to changes in the expression of some other genes that
62 can be identified, for example, using quantitative trait loci (QTL) (3–5) approaches.

63 Steers and co-workers, who reported association between *LIMS1* gene deletion and graft
64 rejection in kidney transplantation, could identify a specific anti-LIMS1 antibody pointing to
65 alloimmune response against the LIMS1 protein missing from the patient. In our recent
66 study (6), we could not replicate the *LIMS1* deletion association in the set of 1025 Finnish
67 kidney transplantation patients and donors, but instead reported an association between
68 *CFH/CFHR* locus deletion and acute rejection. The *CFH/CFHR* locus contains genes encoding
69 for factor H (FH), a major regulator of the alternative pathway (AP) of complement
70 activation, and a set of related genes, *CFHR1–5* (6,7). FH inhibits AP activation both in body
71 fluids and on cell surfaces. It binds to C3b, which has become bound to self surfaces, where
72 it inhibits local complement activation. In contrast, on “foreign” targets, such as microbial or
73 virus surfaces, binding of FH to surface deposited C3b is weak allowing AP activation and
74 amplification to occur (8–10). The functions of FHR-1–5 proteins are becoming better
75 understood. As suggested already a long time ago (11) the FHRs promote complement

76 activity by competing with the master inhibitor FH (7). Genetic variants of *CFH* and *CFHR1–5*
77 have been linked to the pathogenesis of some kidney diseases, such as C3 glomerulopathy
78 (12), atypical hemolytic uremic syndrome (13,14), IgA nephropathy (15–17) and lupus
79 nephritis (18).

80 In the present study, we wanted to understand the effects of $\Delta CFHR3–1$ gene deletions in
81 detail. We fine-mapped the deletion boundaries using multiple ligation-dependent probe
82 amplification (MLPA) and whole genome sequencing (WGS). We found that deletions of
83 various sizes shared a homozygous deletion of *CFHR1* gene indicating that rs7542235 allele
84 G tags for a heterozygous deletion of that locus. In addition to rs7542235, previous studies
85 have shown that another variant, rs6677604, tags for a deletion at the same genomic region
86 (16–18). We observed that a rs6677604 allele A tags for a heterozygous deletion of *CFHR3–1*
87 locus. Proteome analysis of patient plasma samples revealed that, in fact, the deletion-
88 tagging alleles rs7542235-G and rs6677604-A correlated with plasma protein level changes
89 of at least 23 and seven proteins, respectively, sharing six proteins. These shortlists merit
90 further studies.

91

92 MATERIALS AND METHODS

93 *Study cohort*

94 The present study included 15 patients from the study of Markkinen *et al.* (6), who had
95 rs7542235 GG-genotype tagging for the homozygous deletion in the $\Delta CFHR3–1$ locus. The
96 patients received their first kidney transplantation during 2007–2017 at the Helsinki
97 University Hospital, Helsinki, Finland. The characteristics of the whole study population
98 including the 15 patients with homozygous rs7542235-G and 1010 patients with
99 heterozygous (AG) or homozygous non-deletion genotype (AA) are presented in **Table 1**. In
100 total of 199 (20%) rejections were observed in our study cohort. The primary outcome for
101 these patients was biopsy-proven acute rejection, including both antibody-mediated and T-
102 cell-mediated rejections (19). Borderline changes were also included as rejections. The
103 characteristics of the 15 patients (8 in the rejection-group and 7 in the non-rejection-group)
104 with $\Delta CFHR3–1$ -deletion tagging rs7542235 GG-genotype are presented in **Table 2**.

DNA samples were extracted from whole blood at the time of histocompatibility testing for transplantation, and serum samples were collected for complement-dependent cytotoxic crossmatch to detect alloantibodies before and after transplantation at the Finnish Red Cross Blood Service, Helsinki, Finland. The clinical data were extracted from the Finnish Transplant Registry, which is a national follow-up registry obliged by law (**Table 1**).

Genotyping and imputation

Genotyping and imputation procedures are explained in more detail in Markkinen et al. (6). Briefly, the genotyping was performed at the Finnish Institute of Molecular Medicine (FIMM), Helsinki, Finland using Illumina's Infinium Global Screening array-24 v2.0 with multi-disease drop-in. The genotyped data were imputed with Finnish SISu v3 reference panel consisting of high-coverage WGS data from THL Biobank cohorts (N=1768) (Pärn et al. manuscript in preparation). The variant rs7542235 tagging for *CFHR*-deletion was imputed and had an estimated quality measurement value, INFO-score, of 0.98. The other variant investigated, rs6677604 tagging for *CFHR*-deletion was also imputed and had an INFO-score of 0.99.

Multiplex ligation-dependent probe amplification

MLPA was performed for 15 homozygous rs7542235-G patients (eight with rejection, seven without rejection) to screen the copy number variations in *CFH/CFHR* genomic region. Additionally, we performed the analysis for control patients including eight individuals with heterozygous AG-genotype (four with rejection, four without rejection) and eight individuals with homozygous AA-genotype (four with rejection, four without rejection). The detailed description of MLPA procedure is provided in the **Supplementary data**.

Whole genome sequencing

WGS was previously performed for three rs7542235 GG patients with rejection. The results and detailed information about the WGS for these samples are provided in the main text

and supplementary data of our previous publication (6). Here, we sequenced seven more patients with GG-genotype (five with rejection, two without rejection). Sequencing was performed at FIMM, Helsinki, Finland, and the samples were sequenced with Illumina's NovaSeq S4 NS4-300 run. The number of aligned bases for each sample was 20–50 Gb. The input reads for each sample were around 200–500 million, and the length of reads was 151 base pairs. The coverage depth for the sequenced samples was 7–17x. More detailed statistics for the WGS run are presented in **Supplementary Table S2**.

Western blot for FH and FHR proteins

In total of 15 serum samples from nine rs7542235 GG patients (five with rejection, four without rejection) were available for western blot analysis of FH and FHR-1 expression. From the 15 serum samples, nine were collected before transplantation (pre-tx) and six were collected after transplantation (post-tx). The detailed methods for western blot are provided in the **Supplementary data**.

Expression quantitative trait loci (eQTL) analyses

In the eQTL analyses, we used three databases to see the impact of $\Delta CFHR3-1$ deletion tagging variant rs7542235 to gene expression: 1) The FIVEx browser (<https://fivex.sph.umich.edu/>) eQTL data from blood vessel and kidney samples from the EBI eQTL catalogue (4); 2) the eQTLGen Consortium database (<https://www.eqtlgen.org/>) including cis-eQTL, trans-eQTL and eQTS (associations between polygenic scores and gene expression levels) data from 37 datasets (3) from blood samples; and 3) the Human Kidney eQTL Atlas (https://susztaklab.com/Kidney_eQTL/index.php) including four studies with total of 686 microdissected human kidney tubule samples (5). Each of these three databases share data from the Genotype-Tissue Expression Consortium (GTEx). We used the same databases to also see the impact of an additional $\Delta CFHR3-1$ deletion tagging variant rs6677604 on gene expression. All the results are included regardless of P-value.

Protein quantitative trait loci (pQTL), gene ontology and Reactome analyses

We used Olink (n = 1225) and SomaScan (n = 865) pQTL plasma proteomics data of healthy blood donors from FinnGen project (<https://www.finnngen.fi/en>) to see whether the $\Delta CFHR3\text{?}1$ deletion tagging variants rs7542235 and rs6677604 have effect on protein expression. Results with P-value of $<3.49 \times 10^{-06}$ were included. These genes were also included in the gene ontology (GO) enrichment analysis (<https://geneontology.org/>) for each three aspects of biological process, molecular function and cellular component, and Reactome pathway database (<https://reactome.org/>).

Other statistical analyses

Characteristics of patients in **Table 1** and **Table 2** were described by medians and interquartile ranges (IQRs) or ranges, and frequencies and percentages. The comparison between the two groups of patients with rs7542235 GG-genotype and patients with AA/AG-genotype (**Table 1**), and GG-genotype with rejection and GG-genotype without rejection (**Table 2**) were analyzed using the nonparametric Mann-Whitney U-test for non-normally distributed data (recipient age, follow-up time, PRA I and II, HLA eplet mismatch, HLA I eplet mismatch and HLA II eplet mismatch), Pearson's chi-square test for recipient sex, Fisher's exact test for primary diagnosis, or Student's t-test for normally distributed data (cold ischemia). The significance of variation of PRA-values in **Table 2** was not analyzed due to the low frequency count. P-values <0.05 were considered statistically significant.

RESULTS

Characteristics of the study population

We previously reported genetic association between reduced rejection-free survival and $\Delta CFHR3\text{?}1$ -deletion tagging variant rs7542235 genotype GG (6). 15 out of 1025 patients were homozygous for this deletion-tagging variant, 4% belonging to rejection-group and 1% to non-rejection group. The characteristics of the study groups are shown in **Table 1** and **Table 2**. In total of 53% of rs7542235 GG patients had rejection, whereas the percentage

among AG/AA patients was only 19 (P-value <0.001). No significant difference in characteristics between those with rejection and without rejection among patients with rs7522235 GG genotype were found (**Table 2**). There was no enrichment of diagnoses known to be linked to *CFHR* locus.

Multiplex ligation-dependent probe amplification

MLPA confirmed that all 15 rs7542235 GG patients had homozygous deletions of different sizes at the *CFH/CFHR* locus, three different types are depicted in the **Figure 1**. The shared feature of all samples was a homozygous deletion of *CFHR1* gene, indicating that variant rs7542235 tags for deletion of that gene. Patients with deletion type 1 were also homozygous for A allele of the other variant rs6677604, while patients with deletion type 2 and 3 were heterozygous AG for that variant indicating that it tags for a deletion of both *CFHR3* and *CFHR1*.

As assumed, eight patients with rs7542235 genotype AA had no deletions at the *CFHR* locus, and eight patients with heterozygous AG genotype carried a heterozygous deletion encompassing both the *CFHR1* and *CFHR3* genes (**Figure 2**). The patients with rs7542235 AA genotype were also homozygous GG for the variant rs6677604, while heterozygous rs7542235 AG patients were also heterozygous AG for variant rs6677604.

Whole genome sequencing

WGS (**Figure 3**) confirmed the results of MLPA; all ten rs7542235 GG patients had homozygous deletions of different sizes but they shared the deletion of the *CFHR1* gene. In addition to homozygous deletions, WGS results confirmed the findings of MLPA results showing that 5 out of 10 patients carried heterozygous deletions. The **Figure 4** represents the deletion type 3 in more detail.

Western blot of FH and FHR proteins

The western blot run showed that 9/9 of serum samples from individuals with rs7542235 GG genotype lacked the FHR-1 protein (**Figure 5**). The results are in line to those obtained from genetic MLPA and WGS analyses. The more detailed description and genotypes for each serum sample is shown in **Table 3**.

Expression quantitative trait loci analyses

Both tagging variants are intronic, the rs7542235 residing in first intron of LOC100996886, a complement factor H-related protein 3-like pseudogene and rs6677604 residing 3' downstream of exon 11 of *CFH*. To understand whether the $\Delta CFHR3$ deletions or the intronic tagging variants rs7542235 and rs6677604 regulate the expression of other genes, we screened the eQTL databases for both variants. The results are presented in **Table 4**. According to FIVEx database, the allele G of rs7542235 and allele A of rs6677604 were both associated with the lower expression levels of *CFHR1*, -3, and -4 genes. Additionally, the variant rs6677604 was also associated with increased expression level of *CFH* and lower expression of *KCNT2*. All the results from FIVEx were from GTEx study, including data from blood vessel and kidney samples. Based on the eQTLGen Consortium database consisting of only blood samples, both variants were associated merely with the higher expression level of *CFH*. When screening the Human Kidney eQTL Atlas having samples from kidney tubule, we found two statistically significant associations in *CFHR1* and *CFHR3* genes. The beta-values for these findings were negative indicating reduced expression.

Protein quantitative trait loci, gene ontology and Reactome analyses

When analysing the effect of variant rs7542235 allele G on protein expression, total of 23 proteins were shown to be differentially expressed. The Olink results showed three genes to be associated with P-value $< 2.97 \times 10^{-8}$; *CFH*, *CFHR2* and *CFHR5* (**Table 5**), each gene having a positive beta-value and thus meaning an increase in expression. SomaScan data resulted in total of 22 proteins to be differentially expressed with P-value $< 3.5 \times 10^{-6}$. In concordance to Olink results, also SomaScan showed an increase in expression for *CFH* and *CFHR5*, and as was assumed, the $\Delta CFHR1$ deletion tagging variant resulted in decreased expression of

CFHR1 gene. Other differentially expressed genes for rs7542235 included, e.g., prolactin receptor (*PRLR*) with decreasing expression levels and Kirre Like Nephroin Family Adhesion Molecule 1 (*KIRREL1*) with increased expression. For variant rs6677604, the allele A was associated with two differentially expressed genes with P-value $<2.87 \times 10^{-4}$; *CFH* and Leukocyte Immunoglobulin Like Receptor A5 (*LILRA5*). For both genes, the beta-value was positive indicating increasing expression levels. Olink result for this variant resulted in five differentially expressed genes with P-value $<1.78 \times 10^{-9}$. Like variant rs7542235, also rs6677604 was associated with decreased level of *CFHR1*.

In the GO enrichment analysis of molecular function annotation, four out of 23 genes (*CFH*, *CFHR1*, *CFHR2* and *CFHR5*) for variant rs7542235 were associated with three functions of complement component C3b binding, opsonin binding and complement binding with false discovery rates (FDR) of 8.06×10^{-6} , 3.71×10^{-5} and 5.34×10^{-5} , respectively (**Supplementary table S4**). For the other variant rs6677604, GO enrichment analysis annotation showed an association of two out of seven genes (*CFH* and *CFHR1*) for complement component C3b binding pathway with FDR 2.76×10^{-2} . The Reactome analysis showed that four out of 23 genes (*CFH*, *CFHR1*, *CFHR2* and *CFHR5*) were associated to two pathways; regulation of complement cascade and complement cascade with FDR 1.00×10^{-3} for both. For variant rs6677604, there were three associations; *CFH* and *CFHR1* were associated to regulation of complement cascade and complement cascade with FDR 9.04×10^{-4} for both, and *NAGLU* was associated to Sanfilippo syndrome with FDR 0.004. (**Supplementary table S4**).

DISCUSSION

We reported earlier that homozygosity for variant rs7542235 allele G, tagging deletions at the *CFHR3-1* locus, predisposed patients to kidney allograft rejection. To understand better the mechanisms behind the association, we here fine-mapped the deletion boundaries and studied the effects of the gene deletion on protein levels. In addition to our previously reported variant, we also investigated another variant, rs6677604, known to tag for deletion at the *CFHR3-1* locus. Our results show that kidney transplantation patients with GG genotype of deletion-tagging variant rs7542235 have gene deletions of various sizes and types in the *CFHR* locus. The different deletion types, however, shared the complete deletion of the *CFHR1* gene pointing to its primary role. Also, we found that patients with homozygous $\Delta CFHR3\text{--}1$ deletion are homozygous for rs6677604-A genotype. Patients with other types of deletion combinations (Deletion type 2 and 3, **Figure 1**) were heterozygous AG for rs6677604 indicating that allele A tags for a deletion of both *CFHR1* and *CFHR3*. With the support of our results and previous findings (20,21), it is plausible to assume that patients with deletion type 2 carry two heterozygous deletions of $\Delta CFHR3\text{--}1$ and $\Delta CFHR1\text{--}4$. Patients with deletion type 3, in addition to carrying a heterozygous deletion $\Delta CFHR3\text{--}CFHR1$, consistently with previous studies, are likely to carry a heterozygous *CFHR3::CFHR4* hybrid gene (22,23). The lack of expressed FHR-1 protein in homozygous rs7542235-G individuals was confirmed by Western blot analysis. We also showed by using both eQTL databases and proteomics studies that the rs7542235 allele G and rs6677604 allele A are associated with differences in plasma expression levels of various proteins, not merely with those encoded by genes at the *CFH/CFHR* locus but others as well.

The spectrum of kidney diseases in patients with homozygous *CFHR1* deletion was typical to adults receiving a kidney transplant in Finland. It did not involve complement-mediated diseases. Two patients carrying the deletion type 3 were diagnosed with IgA nephropathy and one with glomerular disorder in granulomatosis with polyangiitis. Previously, the *CFHR3::CFHR4* hybrid gene has been observed in C3G (22) and atypical haemolytic uremic syndrome (23). This suggests that the polymorphism may in different patients result in varying manifestations of kidney disease. Similarly, other patients with the homozygous *CFHR1* deletion did not share any particular type of kidney disease.

Sequence and copy number variations in the *CFH* and *CFHR1–5* gene cluster have been linked to the kidney disorders such as C3 glomerulopathy (12), and IgA nephropathy (15). It has been shown that homozygous deletion $\Delta CFHR3–1$ and deficiency of FHR-1 and -3 have a protective effect in IgA nephropathy (24) and age-related macular degeneration (AMD) (25). A hybrid form of the *CFHR3–1* gene has been associated with an increased risk for C3 glomerulopathy (12). This finding indicates that an overactivity of FHRs is linked to complement-mediated diseases. The increased activity of FHRs is assumed to be due to a tendency to make dimers that more efficiently compete with FH. Only an autoimmune form of haemolytic uremic syndrome, with autoantibodies against FH, is linked to *CFHR3–1* deficiency.

The capillaries of kidney glomerulus are continually perfused by large volumes of blood, so the FH and FHR complement proteins present in plasma are in direct contact with the membrane. Due to filtration of water into urine, the concentration of complement proteins increases as plasma flows through the kidney, thus exposing these glomerular cells and surfaces to higher concentrations of FH/FHR proteins than are found elsewhere in the body. Furthermore, the protection against spontaneous complement attack on the glomerulus relies exclusively on the effect of the soluble protector FH, whereas cellular surfaces of the body are further protected by surface bound complement regulators including membrane cofactor protein (MCP, CD46), decay accelerating factor (DAF, CD55) and protectin (CD59). These factors could explain why kidney is relatively sensitive to complement dysregulation (26).

A recent study by Sun *et al.* discovered that a mismatch in *LIMS1* was associated with death-censored graft loss and are expression quantitative trait loci in immune cells for *GCC2*, a gene encoding for a protein involved in mannose-6-phosphate receptor recycling and thus possibly triggering immune responses in the recipient (27). As shown by the eQTL and pQTL results, it is plausible that the homozygous deletion of *CFHR1* shared by all patients influences the expression levels of other *CFHR* genes and proteins, and thus could alter the complement activation. Among the FHR proteins, FHR-1 is most abundant in plasma with a typical molar ratio of the FHR-1 dimer to FH being approximately 0.3:1. The variant rs7542235 allele G is associated with an increased expression of FH and decreased

expression of FHR-1. While FH inhibits complement activation and protects human endothelial cells, FHR-1 has an opposite effect. FH is a regulator of the C3 convertase and promotes degradation of C3b and opsonization of foreign pathogens with iC3b that results in phagocytosis. FHR-1 competes with FH for these activities, thereby increasing complement activation. It thus indirectly promotes C3/C5 convertase activity and complement membrane attack complex assembly. By inhibiting FH binding to C3b, FHR-1 promotes C5a formation and consequent inflammation. In the absence of FHR-1 and FHR-3, local FH binding and activity would be increased, resulting in suppression of complement activation, but, on the other hand, possibly also to an impaired ability to handle injured tissue components. Additionally, the disruption of the balance of FH/FHR protein concentrations and FHR-1 and -5 dimerization patterns due to genetic deletions and emergence of hybrid genes likely lowers the threshold of adverse immunological events in the presence of an additional triggering event such as organ transplant.

Besides *CFH/CFHRs*, differentially expressed genes based on proteomics data included *PRLR* and *KIRREL1* for variant rs7542235 and *PRLR* and *LILRA5* for rs6677604. The downregulated prolactin (PRL) is an endocrine hormone that has several physiological effects including immune system regulation and anti-inflammatory effects. It can trigger the production of proinflammatory cytokines, also having several anti-inflammatory effects that can reduce hyperinflammation (28). Prolactin exerts its effects through PRL receptors (PRLRs). The upregulated *KIRREL1*, also known as *NEPH1*, is a member of the NEPH protein family and is expressed in kidney podocytes, cells involved in ensuring size- and charge-selective ultrafiltration. Mutations in *KIRREL1* gene have been linked to hereditary nephrotic syndrome (29). Leukocyte immunoglobulin-like receptors (LILRs) are a family of inhibitory or stimulatory receptors expressed by immune cells, and several members of the LILR family recognize major histocompatibility complex class I (30). The function of the upregulated *LILRA5* is currently unknown, but it has been shown to induce secretion of several proinflammatory cytokines, which suggests the roles of this protein in triggering innate immune response (31,32). The increased levels of *LILRA5* have also been linked to antibody-mediated rejection after kidney transplantation (30). Overall, the eQTL analysis indicates a potentially enhanced inflammatory response in the presence of the tagging variants.

In conclusion, we found that rs7542235 allele G tags a deletion of the *CFHR1* gene. We also found that rs6677604 allele A tags for a deletion of the whole *CFHR3* locus. The plasma proteomics studies also show that both variants are associated with an altered expression of FH/FHR proteins thus revealing a novel level of intricate regulation of complement system by the genetic polymorphisms of the *CFH* region.

AUTHOR CONTRIBUTIONS STATEMENT

S. Markkinen, J. Partanen and K. Hyvärinen planned the study, interpreted the results and drafted the manuscript; S. Markkinen, I. Lokki and K. Hyvärinen carried out the genome data analyses; the MLPA and western blot analyses and interpretation of the results of these methods were carried out by I. Lokki, S. Markkinen and S. Meri; S. Markkinen executed *in silico* database searches; J. Ritari combined the pQTL summary statistics; I. Helanterä provided clinical data and expertise; all authors contributed to the final version of the manuscript.

CONFLICT OF INTEREST STATEMENT

The authors have no conflicts of interest to declare.

ACKNOWLEDGEMENT

We want to thank Maria Semenova, BSc, for help in collecting the serum samples. We also want to thank Lauri Snellman, biotechnology engineer, for help in laboratory with MLPA, and Marcel Messing, PhD, for help with the western blot method. The THL Biobank's SiSu v3 Imputation reference panel used for the research were obtained from THL Biobank (study number: BB2019_12). We thank all study participants for their generous participation in biobank research. We also want to thank the Sequencing Informatics Team, FIMM Human Genomics, University of Helsinki for the WGS analyses. We want to acknowledge the participants and investigators of FinnGen study. The FinnGen project is funded by two grants from Business Finland (HUS 4685/31/2016 and UH 4386/31/2016) and the following

industry partners: AbbVie Inc., AstraZeneca UK Ltd, Biogen MA Inc., Bristol Myers Squibb (and Celgene Corporation & Celgene International II Sàrl), Genentech Inc., Merck Sharp & Dohme LCC, Pfizer Inc., GlaxoSmithKline Intellectual Property Development Ltd., Sanofi US Services Inc., Maze Therapeutics Inc., Janssen Biotech Inc, Novartis Pharma AG, and Boehringer Ingelheim International GmbH. Following biobanks are acknowledged for delivering biobank samples to FinnGen: Auria Biobank (www.auria.fi/biopankki), THL Biobank (www.thl.fi/biobank), Helsinki Biobank (www.helsinginbiopankki.fi), Biobank Borealis of Northern Finland (<https://www.ppshep.fi/Tutkimus-ja-opetus/Biopankki/Pages/Biobank-Borealis-briefly-in-English.aspx>), Finnish Clinical Biobank Tampere (www.tays.fi/en-US/Research_and_development/Finnish_Clinical_Biobank_Tampere), Biobank of Eastern Finland (www.ita-suomenbiopankki.fi/en), Central Finland Biobank (www.ksshp.fi/fi-FI/Potilaalle/Biopankki), Finnish Red Cross Blood Service Biobank (www.veripalvelu.fi/verenluovutus/biopankkitoiminta), Terveystalo Biobank (www.terveystalo.com/fi/Yritystietoa/Terveystalo-Biopankki/Biopankki/) and Arctic Biobank (<https://www oulu.fi/en/university/faculties-and-units/faculty-medicine/northern-finland-birth-cohorts-and-arctic-biobank>). All Finnish Biobanks are members of BBMRI.fi infrastructure (www.bbMRI.fi). Finnish Biobank Cooperative -FINBB (<https://finbb.fi/>) is the coordinator of BBMRI-ERIC operations in Finland. The Finnish biobank data can be accessed through the Fingenious[®] services (<https://site.fingenious.fi/en/>) managed by FINBB.

FUNDING STATEMENT

The study was supported by funding from the Government of Finland VTR funding, Munuaissäätiö (to S. Markkinen) and Suomen Transplantaatiokirurginen yhdistys ry (to S. Markkinen), the State Subsidy to Hospitals (TYH2019311 and TYH2022315 to S. Meri), Helsinki University Hospital Diagnostic Center funds (Y780023006, to S. Meri) and Sigrid Jusélius Foundation (to S. Meri). FinnGen is funded by two grants from Business Finland (HUS 4685/31/2016 and UH 4386/31/2016) and twelve industry partners (AbbVie Inc, AstraZeneca UK Ltd, Biogen MA Inc, Celgene Corporation, Celgene International II Sarl, Genentech Inc, GlaxoSmithKline, Janssen Biotech Inc. Maze Therapeutics Inc., Merck Sharp

414 & Dohme Corp, Novartis, Pfizer Inc., Sanofi). The funders and biobanks had no role in study
415 design, data collection and analysis, decision to publish, or preparation of the manuscript.

416

417 ETHICS STATEMENT

418 The study conforms to the principles of the Declaration of Helsinki and has been approved
419 by the ethics committee of Helsinki University Hospital (HUS/1873/2018) and the Finnish
420 National Supervisory Authority for Welfare and Health (V/9161/2019).

REFERENCES

- Steers NJ, Li Y, Drace Z, D'Addario JA, Fischman C, Liu L, et al. Genomic Mismatch at *LIMS1* Locus and Kidney Allograft Rejection. *New England Journal of Medicine*. 2019;380(20):1918–28.
- Markkinen S, Helanterä I, Lauronen J, Lempinen M, Partanen J, Hyvärinen K. Mismatches in gene deletions and kidney-related proteins as candidates for histocompatibility factors in kidney transplantation. *Kidney Int Rep*. 2022;7(11):2484–94.
- Vösa U, Claringbould A, Westra HJ, Bonder MJ, Deelen P, Zeng B, et al. Large-scale cis- and trans-eQTL analyses identify thousands of genetic loci and polygenic scores that regulate blood gene expression. *Nat Genet*. 2021 Sep 1;53(9):1300–10.
- Kwong A, Boughton AP, Wang M, Vandelaar P, Boehnke M, Abecasis G, et al. FIVEx: an interactive eQTL browser across public datasets. *Bioinformatics*. 2022 Jan 15;38(2):559–61.
- Liu H, Doke T, Guo D, Sheng X, Ma Z, Park J, et al. Epigenomic and transcriptomic analyses define core cell types, genes and targetable mechanisms for kidney disease. *Nat Genet*. 2022 Jul 1;54(7):950–62.
- Markkinen S, Helanterä I, Lauronen J, Lempinen M, Partanen J, Hyvärinen K. Mismatches in gene deletions and kidney-related proteins as candidates for histocompatibility factors in kidney transplantation. *Kidney Int Rep*. 2022;7(11):2484–94.
- Lucientes-Contiente L, Márquez-Tirado B, Goicoechea de Jorge E. The Factor H protein family: The switchers of the complement alternative pathway. Vol. 313, *Immunological Reviews*. *Immunol Rev*; 2023. p. 25–45.
- Rodríguez De Córdoba S, Esparza-Gordillo J, Goicoechea De Jorge E, Lopez-Trascasa M, Sánchez-Corral P. The human complement factor H: Functional roles, genetic variations and disease associations. *Mol Immunol*. 2004 Jun;41(4):355–67.
- Meri S, Pangburn MK. Discrimination between activators and nonactivators of the alternative pathway of complement: regulation via a sialic acid/polyanion binding site on factor H. *Proc Natl Acad Sci U S A*. 1990;87(10):3982–6.

456 Meri S. Self-nonsel discrimination by the complement system. *FEBS Lett.* 2016 Aug 1;590(15):2418–
457 34.
458

459 Närkiö-Mäkelä M, Hellwage J, Tahkokallio O, Meri S. Complement-regulator factor H and related
460 proteins in otitis media with effusion. *Clin Immunol.* 2001;100(1):118–26.
461

462 Malik TH, Lavin PJ, De Jorge EG, Vernon KA, Rose KL, Patel MP, et al. A hybrid CFHR3-1 gene causes
463 familial C3 glomerulopathy. *J Am Soc Nephrol.* 2012 Jul;23(7):1155–60.
464

465 Józsi M, Licht C, Strobel S, Zipfel SLH, Richter H, Heinen S, et al. Factor H autoantibodies in atypical
466 hemolytic uremic syndrome correlate with CFHR1/CFHR3 deficiency. *Blood.* 2008;111(3):1512–4.
467

468 Moore I, Strain L, Pappworth I, Kavanagh D, Barlow PN, Herbert AP, et al. Association of factor H
469 autoantibodies with deletions of CFHR1, CFHR3, CFHR4, and with mutations in CFH, CFI, CD46, and
470 C3 in patients with atypical hemolytic uremic syndrome. *Blood.* 2010;115(2):379–87.
471

472 Gharavi AG, Kiryluk K, Choi M, Li Y, Hou P, Xie J, et al. Genome-wide association study identifies
473 susceptibility loci for IgA nephropathy. *Nat Genet.* 2011 Feb;43(4):321–9.
474

475 Yeo SC, Liu X, Liew A. Complement factor H gene polymorphism rs6677604 and the risk, severity and
476 progression of IgA nephropathy: A systematic review and meta-analysis. *Nephrology (Carlton).* 2018
477 Dec 1;23(12):1096–106.
478

479 Xie J, Kiryluk K, Li Y, Mladkova N, Zhu L, Hou P, et al. Fine mapping implicates a deletion of CFHR1
480 and CFHR3 in protection from IgA nephropathy in Han Chinese. *Journal of the American Society of*
481 *Nephrology.* 2016;27(10):3187–94.
482

483 Tao J, Tan M, Li LL, Chu H, Song D, Tan Y, et al. Genetic Variant CFH rs6677604 Might Play a
484 Protective Role in lupus Nephritis. *Am J Med Sci.* 2021 Mar 1;361(3):336–43.
485

486 Roufosse C, Simmonds N, Clahsen-Van Groningen M, Haas M, Henriksen KJ, Horsfield C, et al. A 2018
487 Reference Guide to the Banff Classification of Renal Allograft Pathology. *Transplantation.*
488 2018;102(11):1795–814.
489

490 Abarrategui-Garrido C, Martínez-Barricarte R, López-Trascasa M, Rodríguez De Córdoba S, Sánchez-
491 Corral P. Characterization of complement factor H-related (CFHR) proteins in plasma reveals novel

492 genetic variations of CFHR1 associated with atypical hemolytic uremic syndrome. *Blood* [Internet].
 493 2009 Nov 5 [cited 2024 Jun 19];114(19):4261–71. Available from:
 494 <https://pubmed.ncbi.nlm.nih.gov/19745068/>
 495
~~496~~ Moore I, Strain L, Pappworth I, Kavanagh D, Barlow PN, Herbert AP, et al. Association of factor H
 497 autoantibodies with deletions of CFHR1, CFHR3, CFHR4, and with mutations in CFH, CFI, CD46, and
 498 C3 in patients with atypical hemolytic uremic syndrome. *Blood*. 2010;115(2):379–87.
 499
~~500~~ Piras R, Breno M, Valoti E, Alberti M, Iatropoulos P, Mele C, et al. CFH and CFHR Copy Number
 501 Variations in C3 Glomerulopathy and Immune Complex-Mediated Membranoproliferative
 502 Glomerulonephritis. *Front Genet* [Internet]. 2021 Jun 11 [cited 2024 Jun 19];12. Available from:
 503 <https://pubmed.ncbi.nlm.nih.gov/34211499/>
 504
~~505~~ Piras R, Valoti E, Alberti M, Bresin E, Mele C, Breno M, et al. CFH and CFHR structural variants in
 506 atypical Hemolytic Uremic Syndrome: Prevalence, genomic characterization and impact on outcome.
 507 *Front Immunol* [Internet]. 2023 Jan 30 [cited 2024 Jun 19];13. Available from:
 508 <https://pubmed.ncbi.nlm.nih.gov/36793547/>
 509
~~510~~ Kiryluk K, Novak J. The genetics and immunobiology of IgA nephropathy. *J Clin Invest*. 2014 Jun
 511 2;124(6):2325–32.
 512
~~513~~ Hughes AE, Orr N, Esfandiary H, Diaz-Torres M, Goodship T, Chakravarthy U. A common CFH
 514 haplotype, with deletion of CFHR1 and CFHR3, is associated with lower risk of age-related macular
 515 degeneration. *Nat Genet*. 2006 Oct;38(10):1173–7.
 516
~~517~~ Thurman JM, Harrison RA. The susceptibility of the kidney to alternative pathway activation-A
 518 hypothesis. *Immunol Rev*. 2023 Jan 1;313(1):327–38.
 519
~~520~~ Sun Z, Zhang Z, Banu K, Gibson IW, Colvin RB, Yi Z, et al. Multiscale genetic architecture of donor-
 521 recipient differences reveals intronic LIMS1 mismatches associated with kidney transplant survival. *J*
 522 *Clin Invest*. 2023 Sep 7;
 523
~~524~~ Rasmi Y, Jalali L, Khalid S, Shokati A, Tyagi P, Ozturk A, et al. The effects of prolactin on the immune
 525 system, its relationship with the severity of COVID-19, and its potential immunomodulatory
 526 therapeutic effect. *Cytokine*. 2023 Sep 1;169:156253.
 527

528 Sellin L, Huber TB, Gerke P, Quack I, Pavenstädt H, Walz G. NEPH1 defines a novel family of podocin
529 interacting proteins. The FASEB journal: official publication of the Federation of American Societies
530 for Experimental Biology. 2003;17(1):115–7.

531

532 Lamarthée B, Genet C, Cattin F, Danger R, Giral M, Brouard S, et al. Single-cell mapping of leukocyte
533 immunoglobulin-like receptors in kidney transplant rejection. Frontiers in Transplantation. 2022 Aug
534 11;1:952785.

535

536 Mitchell A, Rentero C, Endoh Y, Hsu K, Gaus K, Geczy C, et al. LILRA5 is expressed by synovial tissue
537 macrophages in rheumatoid arthritis, selectively induces pro-inflammatory cytokines and IL-10 and
538 is regulated by TNF-alpha, IL-10 and IFN-gamma. Eur J Immunol [Internet]. 2008 [cited 2024 Jun
539 19];38(12):3459–73. Available from: <https://pubmed.ncbi.nlm.nih.gov/19009525/>

540

541 Truong AD, Hong Y, Nguyen HT, Nguyen CT, Chu NT, Tran HTT, et al. Molecular identification and
542 characterisation of a novel chicken leukocyte immunoglobulin-like receptor A5. Br Poult Sci
543 [Internet]. 2021 [cited 2024 Jun 19];62(1):68–80. Available from:
544 <https://pubmed.ncbi.nlm.nih.gov/32812773/>

545

546

547 **Table 1. Characteristics of the study cohort.**

Characteristic	All patients, n = 1025	Patients with rs7542235 GG genotype, n = 15	Patients with rs7542235 AA/AG genotype, n = 1010	P-value ^a
Age (median, range)	57 (18–79)	58 (36–74)	57 (18–79)	0.639 ^c
Sex, n (%)				1 ^d
Male	703 (69)	10 (67)	693 (69)	
Female	322 (31)	5 (33)	317 (31)	
Rejection, n (%)	199 (19)	8 (53)	191 (19)	<0.001 ^d
T cell -mediated, n (%)	178 (17)	6 (75)	172 (90)	
Antibody-mediated, n (%)	21 (3)	2 (25)	19 (10)	
Primary diagnosis, n (%)				
Polycystic kidney disease	202 (20)	3 (20)	199 (20)	1 ^e
Diabetic nephropathy with type1 diabetes	150 (15)	2 (13)	148 (15)	1 ^e
IgA nephropathy	106 (10)	2 (13)	104 (10)	0.662 ^e
Chronic kidney disease, unspecified	105 (10)	2 (13)	103 (10)	0.660 ^e
Glomerular disorder in amyloidosis	6 (1)	1 (7)	5 (1)	0.085 ^e
Glomerular disorder in polyarteritis nodosa	4 (0)	1 (7)	3 (0)	0.057 ^e
Glomerular disorder in granulomatosis with polyangiitis	10 (1)	1 (7)	9 (1)	0.137 ^e
Hydronephrosis with ureteropelvic junction obstruction	2 (0)	1 (7)	1 (0)	0.029 ^e
Other chronic kidney disease	22 (2)	1 (7)	21 (2)	0.279 ^e
Polycystic kidney disease, unspecified	9 (1)	1 (7)	8 (1)	0.124 ^e
Other	409 (40)	0 (0)	409 (40)	<0.001 ^e
	Median (IQR)			
Death-censored follow-up time, months	37 (18–63)	37 (9–50)	37 (18–63)	0.402 ^c
PRA I >0, % ^b	22 (5–55)	52 (20–64)	21 (5–55)	0.290 ^c
PRA II >0, % ^b	27 (12–60)	17 (17–58)	27 (12–60)	0.702 ^c
Cold ischemia, hours	20 (17–23)	21 (19–22)	20 (17–23)	0.569 ^e
HLA eplet mismatch sum, n	27 (19–36)	28 (17–46)	27 (19–36)	0.808 ^c
HLA I eplet mismatch sum, n	11 (7–15)	9 (7–13)	11 (7–15)	0.459 ^c
HLA II eplet mismatch sum, n	16 (7–24)	22 (8–28)	16 (7–24)	0.388 ^c

548 HLA, human leukocyte antigen; IgA, Immunoglobulin A; IQR, interquartile range; PRA, panel-reactive antibody.

549 ^aThe significance of variation was calculated between rs7542235 GG vs. AG/AA groups.

550 ^bThe medians of PRA values are calculated only from patients with PRA I >0 and PRA II >0.

551 ^cThe Mann–Whitney U-test.

552 ^dThe Pearson chi-square test.

553 ^eFisher's exact test.

554 ^fThe Student's t-test.

Table 2. Characteristics of the 15 patients with rs7542235 GG-genotype tagging for homozygous *CFHR3* deletion. Rejection vs. non-rejection group.

Characteristic	Patients with rs7542235 GG genotype, n = 15	Patients with rs7542235 GG genotype with rejection, n = 8	Patients with rs7542235 GG genotype without rejection, n = 7	P-value ^a
Age (median, range)	58 (36-74)	52 (36-73)	61 (53-74)	0.064 ^c
Sex, n (%)				0.854 ^d
Male	10 (67)	6 (75)	4 (57)	
Female	5 (33)	2 (25)	3 (43)	
Rejection, n (%)	8 (50)	8 (100)	0 (0)	
T cell-mediated, n (%)	6 (38)	6 (75)	0 (0)	
Antibody-mediated, n (%)	2 (12)	2 (25)	0 (0)	
Primary diagnosis, n (%)				
Polycystic kidney disease	3 (20)	0 (0)	3 (43)	0.076 ^e
Diabetic nephropathy with type I diabetes	2 (13)	1 (12.5)	1 (14)	1 ^e
IgA nephropathy	2 (13)	2 (25)	0 (0)	0.466 ^e
Chronic kidney disease, unspecified	2 (13)	2 (25)	0 (0)	0.466 ^e
Glomerular disorder in amyloidosis	1 (7)	1 (12.5)	0 (0)	1 ^e
Glomerular disorder in polyarteritis nodosa	1 (7)	0 (0)	1 (14)	0.466 ^e
Glomerular disorder in granulomatosis with polyangiitis	1 (7)	1 (12.5)	0 (0)	1 ^e
Hydronephrosis with ureteropelvic junction obstruction	1 (7)	0 (0)	1 (0)	0.466 ^e
Other chronic kidney disease	1 (7)	0 (0)	1 (14)	0.466 ^e
Polycystic kidney disease, unspecified	1 (7)	1 (12.5)	0 (0)	1 ^e
Median (IQR)				
Follow-up time, months	37 (9-50)	29 (9-40)	41 (24-70)	0.189 ^c
PRA I >0, % ^b	52 (20-64)	52 (36-62)	36 (22-50)	NA ^f
PRA II >0, % ^b	17 (17-58)	17 (17-17) ^g	99 (99-99) ^h	NA ^f
Cold ischemia, hours	21 (19-22)	22 (19-23)	21 (19-22)	0.491 ^f
HLA eplet mismatch sum, n	28 (17-46)	38 (23-49)	27 (14-33)	0.182 ^c
HLA I eplet mismatch sum, n	9 (7-13)	12 (7-19)	9 (8-11)	0.521 ^c
HLA II eplet mismatch sum, n	22 (8-28)	23 (14-30)	8 (7-25)	0.269 ^c

HLA, human leukocyte antigen; IgA, immunoglobulin A; IQR, interquartile range; PRA, panel-reactive antibody.

^aThe significance of variation was calculated between rejection and non-rejection group of patients with rs7542235 GG-genotype.

^bThe medians of PRA values are calculated only from patients with PRA I >0 and PRA II >0.

^cThe Mann–Whitney U-test.

^dThe Pearson chi-square test.

^eFisher's exact test.

564 ^fThe significance of variation was not analyzed due to the low frequency count.

565 ^gn = 2

566 ^hn = 1

567 ^fThe Student's t-test.

568

569 **Table 3. Detailed description of serum samples.**

Sample ID (pseudonymized)	Sample number in the Figure 5	Pre-tx sample	Post-tx sample	The region for homozygous deletion according to MLPA/WGS	The region for heterozygous deletion according to MLPA/WGS	Rejection*
ABGR4XFUNH	1	x		CFHR3 (exons 1-6), CFHR1 (exons 1-6)		0
ABGR4XFUNH	2		x	CFHR3 (exons 1-6), CFHR1 (exons 1-6)		0
BCZORKR4A3	3	x		CFHR3 (exons 1-6), CFHR1 (exons 1-6)		0
DGYMLR5QCF	4	x		no deletion control sample		0
EN257NXZIH	5	x		CFHR3 (exons 1-6), CFHR1 (exons 1-6)		0
NQZTUVJ6JA	6	x		CFHR3 (exons 1-6), CFHR1 (exons 1-6)		0
3RVWTIW47P	7	x		CFHR3 (exons 1-6), CFHR1 (exons 1-6)		1
3RVWTIW47P	8		x	CFHR3 (exons 1-6), CFHR1 (exons 1-6)		1
ADCKGCMCUK	9	x		CFHR3 (exons 1-6), CFHR1 (exons 1-6)		1
ADCKGCMCUK	10		x	CFHR3 (exons 1-6), CFHR1 (exons 1-6)		1
JUIHLJXRHX	11	x		CFHR1 (exons 1-6)	CFHR3 (exons 1-6), CFHR4 (exons 1-10)	1
JUIHLJXRHX	12		x	CFHR1 (exons 1-6)	CFHR3 (exons 1-6), CFHR4 (exons 1-10)	1
QDM2EBUWCF	13	x		CFHR3 (exons 1-6), CFHR1 (exons 1-6)		1
QDM2EBUWCF	14		x	CFHR3 (exons 1-6), CFHR1 (exons 1-6)		1
V53C3LDXJW	15	x		CFHR3 (exon 6), CFHR1 (exons 1-6)	CFHR3 (exons 1-4), CFHR4 (exons 1-6)	1
V53C3LDXJW	16		x	CFHR3 (exon 6), CFHR1 (exons 1-6)	CFHR3 (exons 1-4), CFHR4 (exons 1-6)	1

570 CFHR, complement factor H related; MLPA, multiplex ligation-dependent probe amplification; WGS, whole genome
571 sequencing; *Acute rejection status 0 = no rejection, 1 = rejection

572

573 **Table 4. eQTL associations of *CFHR3* deletion tagging variants rs7542235 and rs6677604.**

<i>ΔCFHR1</i> -tagging variant rs7542235						
FIVEx						
Gene	Tissue	Chromosome	Assessed allele	Other allele	Effect size	P-value
CFHR1	blood vessel	1	G	A	-0.48	7.59×10^{-106}
CFHR1	kidney	1	G	A	-1.68	0.00
CFHR1	blood vessel	1	G	A	-0.43	0.02
CFHR1	blood vessel	1	G	A	-0.08	0.35
CFHR3	blood vessel	1	G	A	-0.92	1.17×10^{-23}
CFHR3	blood vessel	1	G	A	-0.78	1.91×10^{-16}
CFHR3	blood vessel	1	G	A	-0.96	4.17×10^{-11}
CFHR3	kidney	1	G	A	-1.64	0.00
CFHR4	kidney	1	G	A	-0.98	0.02
eQTLGen Consortium						
Gene	Tissue	Chromosome	Assessed allele	Other allele	Z-score	P-value
CFH	Blood	1	G	A	10.05	8.88×10^{-24}
Human Kidney eQTL Atlas						
Gene	Tissue	Chromosome	Assessed allele	Other allele	Beta *	P-value
CFHR1	kidney tubule	1	G	A	-0.77	2.73×10^{-58}
CFHR3	kidney tubule	1	G	A	-0.33	4.01×10^{-10}
<i>ΔCFHR3</i> -tagging variant rs6677604						
FIVEx						
Gene	Tissue	Chromosome	Assessed allele	Other allele	Effect size	P-value
CFH	kidney	1	A	G	0.05	0.84
CFH	blood vessel	1	A	G	0.09	0.32
CFHR1	blood vessel	1	A	G	-0.49	1.55×10^{-5}
CFHR1	kidney	1	A	G	-1.68	1.11×10^{-3}

CFHR1	blood vessel	1	A	G	-0.40	0.04
CFHR1	blood vessel	1	A	G	-0.08	0.40
CFHR3	blood vessel	1	A	G	-0.94	5.37×10^{-23}
CFHR3	blood vessel	1	A	G	-0.81	1.91×10^{-16}
CFHR3	blood vessel	1	A	G	-1.01	1.07×10^{-10}
CFHR3	kidney	1	A	G	-1.64	1.51×10^{-3}
CFHR4	kidney	1	A	G	-0.98	0.02
KCNT2	blood vessel	1	A	G	-0.07	0.43
KCNT2	blood vessel	1	A	G	-0.06	0.63
KCNT2	kidney	1	A	G	-0.079	0.78
eQTLGen Consortium						
Gene	Tissue	Chromosome	Assessed allele	Other allele	Z-score	P-value
CFH	Blood	1	A	G	9.96	2.18×10^{-23}
Human Kidney eQTL Atlas						
Gene	Tissue	Chromosome	Assessed allele	Other allele	Beta *	P-value
CFHR1	kidney tubule	1	A	G	-0.73	8.42×10^{-51}
CFHR3	kidney tubule	1	A	G	-0.33	4.69×10^{-10}

*Effect size (Beta) is reported with respect to the alternate allele. CFH, complement factor H; CFHR, complement factor H related; eQTL, expression quantitative trait loci; KCNT2, potassium channel subfamily T, member 2.

578 **Table 5. pQTL associations of *CFHR3* deletion tagging variants rs7542235 and rs6677604 in Olink and**
579 **SomaScan data.**

<i>ΔCFHR1</i> -tagging variant rs7542235					
Olink (n = 1225)					
Gene	Chromosome	Assessed allele	Other allele	Beta	P-value
CFH	1	G	A	0.42	2.34×10^{-12}
CFHR2	1	G	A	0.38	2.54×10^{-10}
CFHR5	1	G	A	0.33	2.97×10^{-08}
SomaScan (n = 865)					
Gene	Chromosome	Assessed allele	Other allele	Beta	P-value
AKR1B10	7	G	A	-0.87	6.01×10^{-37}
CFH	1	G	A	0.37	1.81×10^{-07}
CFHR1	1	G	A	-0.82	1.05×10^{-33}
CFHR5	1	G	A	0.40	9.31×10^{-09}
DYNLT3	X	G	A	0.37	1.95×10^{-07}
F13B	1	G	A	0.43	5.31×10^{-10}
GLT8D1	3	G	A	-0.41	5.62×10^{-09}
KIRREL1	1	G	A	0.35	4.78×10^{-07}
LRP1B	2	G	A	-0.34	9.86×10^{-07}
MAN1B1	9	G	A	0.45	1.97×10^{-10}
MYCT1	6	G	A	-0.33	3.34×10^{-06}
NAGLU	17	G	A	-0.63	1.11×10^{-19}
NDUFS4	5	G	A	0.64	1.08×10^{-20}
OTOR	20	G	A	-0.41	6.56×10^{-09}
PRLR	5	G	A	-1.03	9.62×10^{-55}
RIPPLY3	21	G	A	0.61	1.14×10^{-18}
RPS6KA1	1	G	A	-0.42	2.68×10^{-09}
SCRN3	2	G	A	0.55	1.63×10^{-15}
TST	22	G	A	0.48	6.90×10^{-12}
UGT2B15	4	G	A	0.56	1.25×10^{-15}
ULBP2	6	G	A	0.44	3.29×10^{-10}
ZDHHC4	7	G	A	0.33	3.50×10^{-06}
<i>ΔCFHR3</i> -tagging variant rs6677604					
Olink (n = 1225)					
Gene	Chromosome	Assessed	Other allele	Beta	P-value

allele					
CFH	1	G	A	0.41	5.40×10^{-17}
LILRA5	19	G	A	0.27	2.87×10^{-8}
SomaScan (n = 865)					
Gene	Chromosome	Assessed allele	Other allele	Beta	P-value
CFHR1	1	G	A	-0.86	4.57×10^{-36}
NAGLU	17	G	A	-0.64	5.89×10^{-20}
OTOR	20	G	A	-0.43	1.78×10^{-9}
PRLR	5	G	A	-1.03	3.04×10^{-53}
RIPPLY3	21	G	A	0.63	3.48×10^{-19}

FIGURE LEGENDS

Figure 1. MLPA results for rs7542235 GG genotype patients with rejection (A) and without rejection (B). Deletion type 1 indicates homozygous deletion at *CFHR3* exons (ex) 1-6 and *CFHR1* ex 1-6. Deletion type 2 indicates homozygous deletion at *CFHR1* ex 2-6 and heterozygous deletions at *CFHR3* ex 1-6 and *CFHR4* ex 1-10. Deletion type 3 indicates homozygous deletion at *CFHR3* ex 6 and *CFHR1* ex 1-6 and heterozygous deletions at *CFHR3* ex 1-4 and *CFHR4* ex 1-6. CFHR, complement factor H related; MLPA, multiplex ligation-dependent probe amplification.

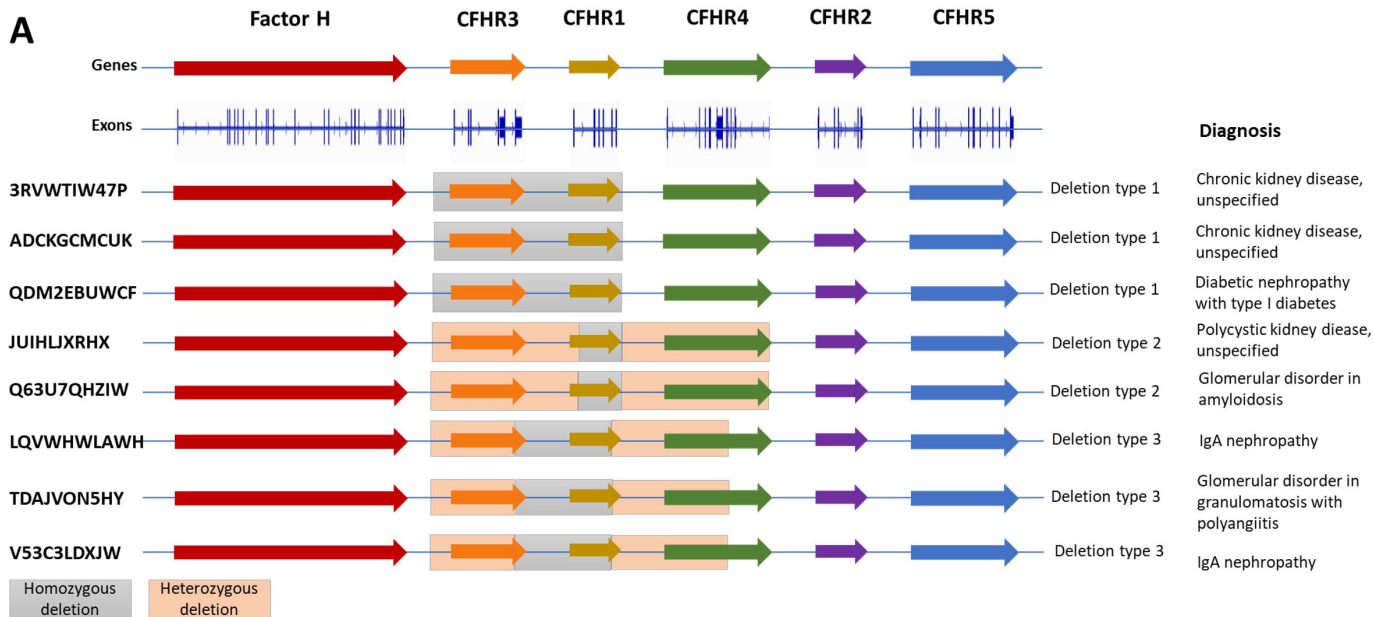
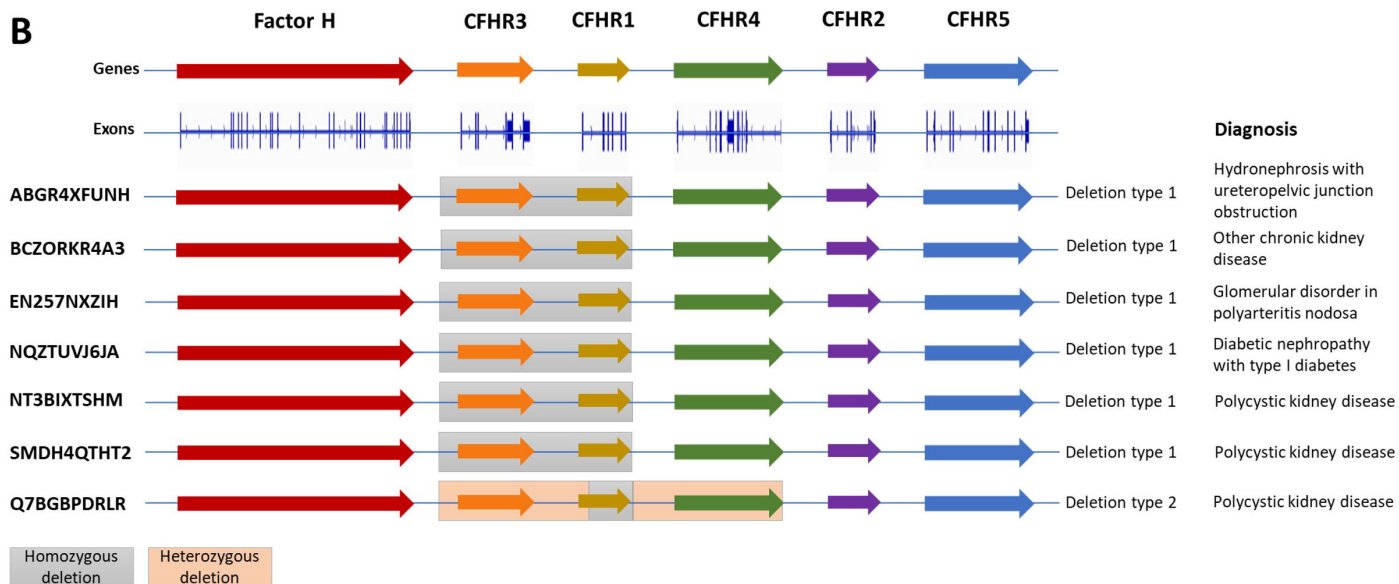
Figure 2. MLPA results for rs7542235 AA genotype (A) and AG genotype (B) patients. Patients with rs7542235 AA genotype had normal genotype without deletions. Patients with rs7542235 AG genotype carried a heterozygous deletion covering *CFHR3* ex 1-6 and *CFHR1* ex 1-6. CFHR, complement factor H related; MLPA, multiplex ligation-dependent probe amplification.

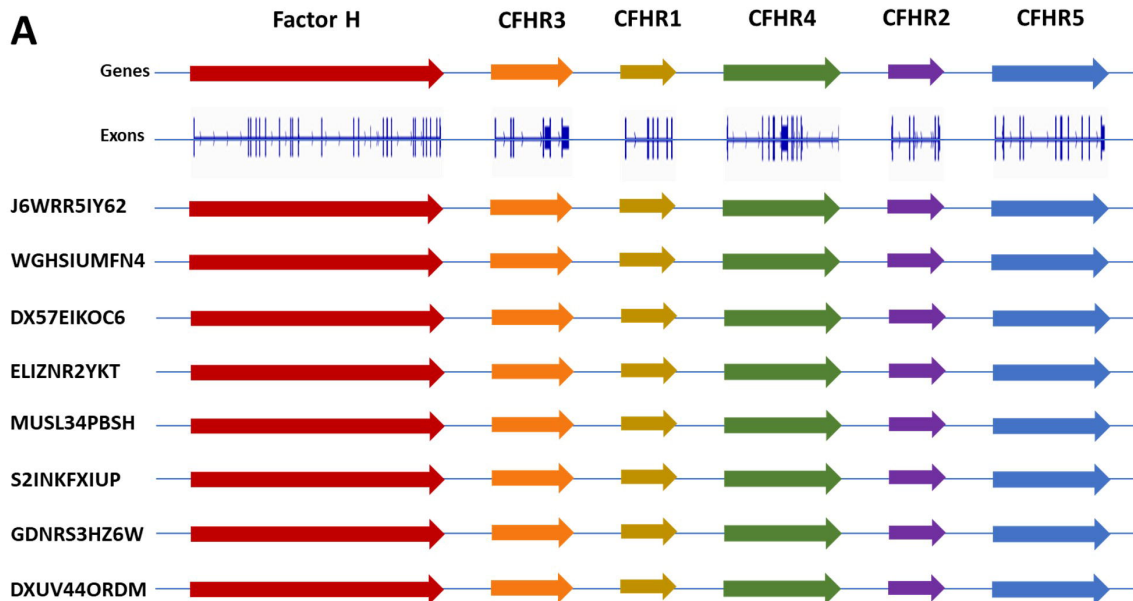
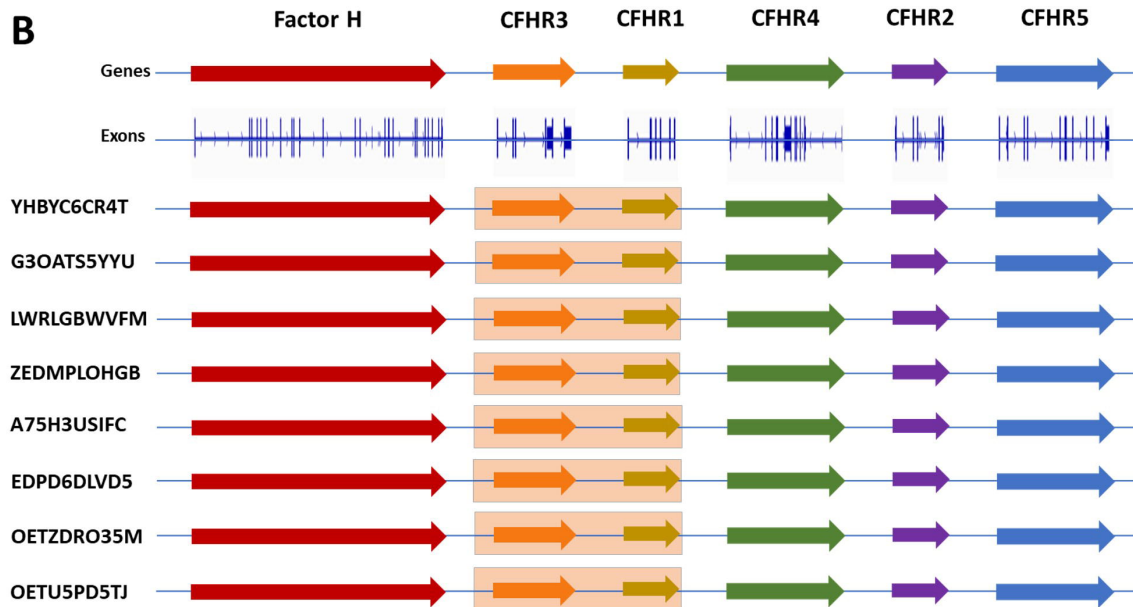
Figure 3. The results of whole genome sequencing of *CFHR3-1* loci on chromosome 1 for 10 rs7542235 GG genotype patients. The turquoise color represents a homozygous deletion, and the dark blue heterozygous deletion. The three lowest samples were sequenced at the time of Study I, other samples were sequenced at the time of Study II. The IDs on the left indicate the pseudonymes for each patient. The variant rs7542235 tagging for the deletion $\Delta CFHR1$ is located in the intergenic region between *CFHR1* and *CFHR4*, and the variant rs6677604 tagging for deletion $\Delta CFHR3-1$ is located in the intron 11 of *CFH* gene (red bars). Each patient with homozygous deletion $\Delta CFHR3-1$ were homozygous for rs6677604 AA genotype, while rest of the patients were heterozygous AG for that variant. CFH, complement factor H; CFHR, complement factor H related; ID, identity.

Figure 4. Detailed illustration of MLPA and WGS results for Deletion type 3. Patient with homozygous deletion covering *CFHR3* exon 6 and *CFHR1* exons 1-6, and heterozygous deletions covering *CFHR3* exons 1-4 and *CFHR4* exons 1-4. A) *CFH/CFHR* gene locus, exons and deletions of patient V53C3LDXJW. B) MLPA result for the *CFH/CFHR* locus. The deletion is denoted by the red spots below the deletion cut-off line (red) in the ratio chart. The red line represents the 0.7 ratios, and the blue line represents the 1.3 ratios. Above the blue line

are the genes covered by the SALSA MLPA probemix, P236 *CFH* Region B1. C) Visualization of homozygous deletion in WGS data at the beginning of *CFHR3* gene exon 6. Control sample without deletion above, the patient sample below. D) Visualization of heterozygous deletion in WGS data at the end of *CFHR4* gene. The coverage (gray) decreases half in size at the heterozygous deletion region. CFH, complement factor H; CFHR, complement factor H related; MLPA, multiplex ligation-dependent probe amplification; WGS, whole genome sequencing.

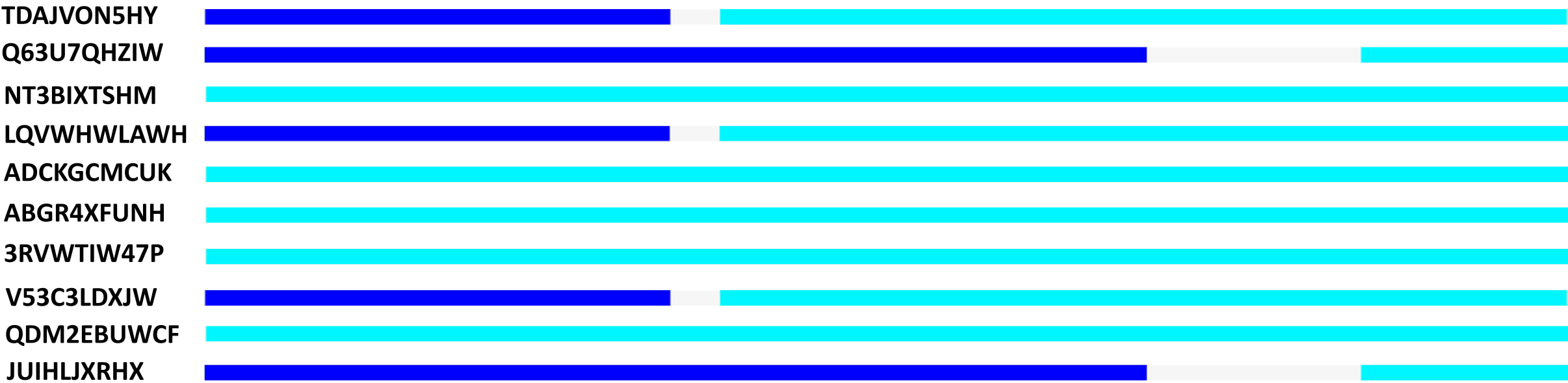
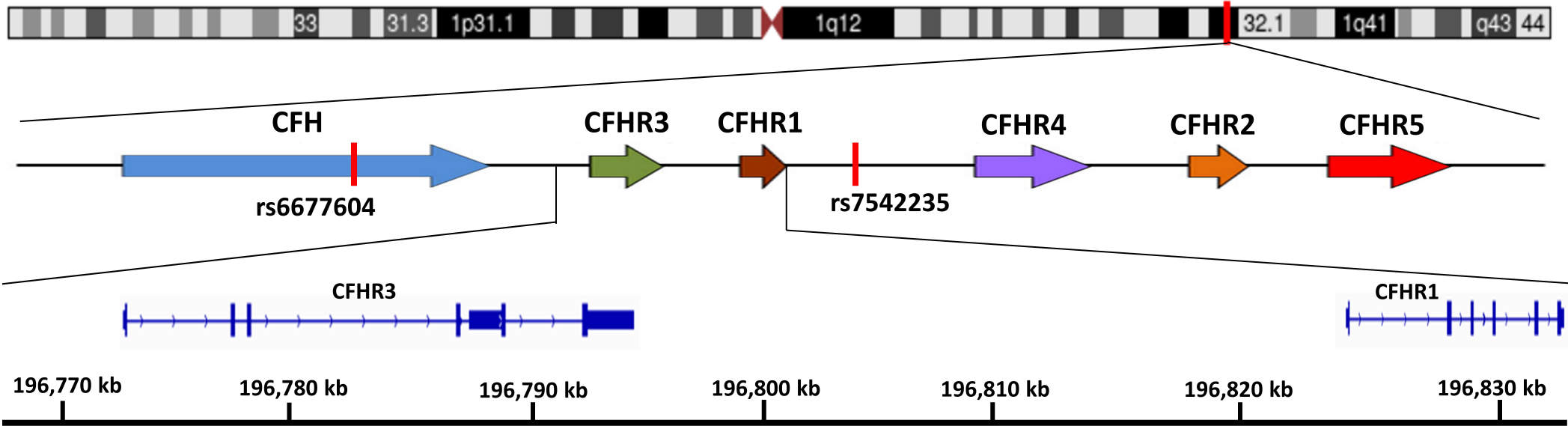
Figure 5. Western blot analyses of FH and FHR-1 protein expression. The detailed information for each serum sample is described in Table 3. The sample number 4 (control) and normal human serum (NHS, also control) have normal expression of FHR1. The other samples are individuals with homozygous deletion of *CFHR1* gene. FH, factor H protein; FHL-1, factor H like protein 1; FHR-1, factor H related protein 1; kDa, kilodalton; MK, marker; NHS, normal human serum

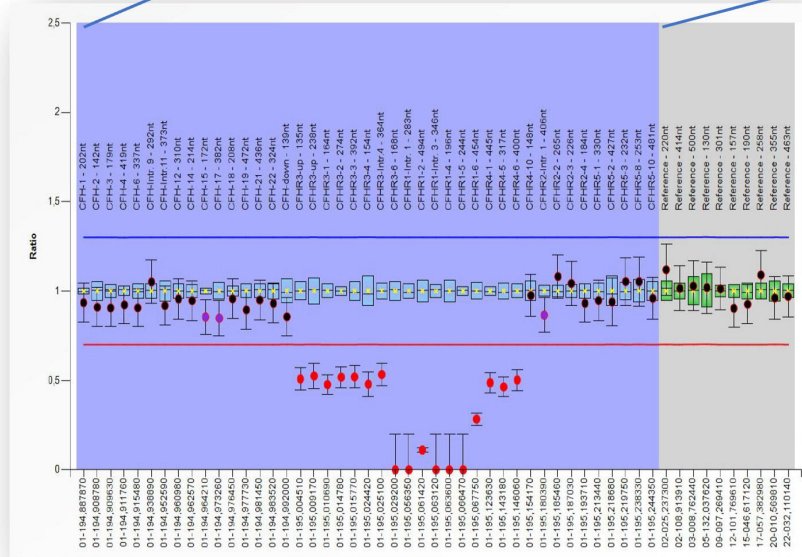
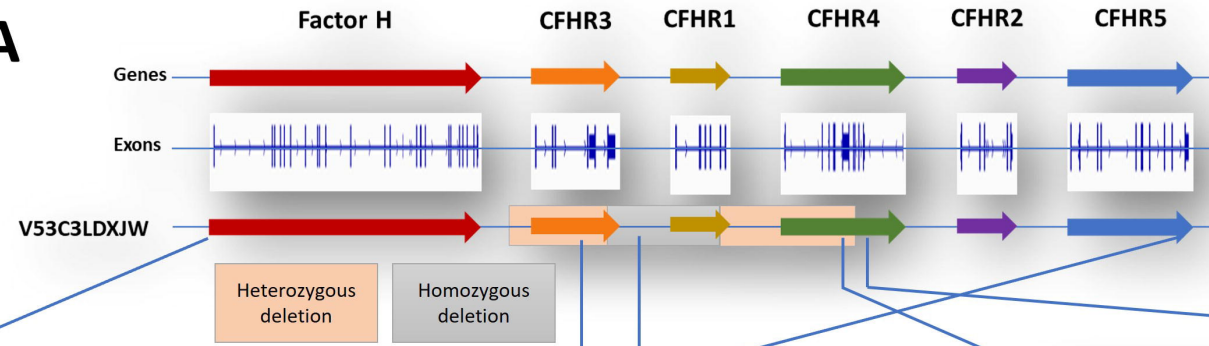
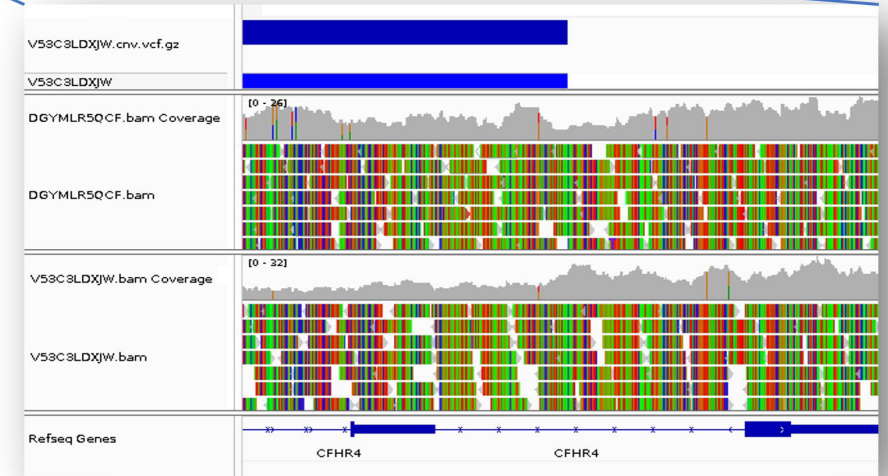
A**B**

A**B**

Heterozygous
deletion

Chr 1



B**A****D****C**